

**Sales catalogue: H.G. Alaway**

**Publication/Creation**

14 March 1916

**Persistent URL**

<https://wellcomecollection.org/works/ymz4rqs4>

**License and attribution**

This work has been identified as being free of known restrictions under copyright law, including all related and neighbouring rights and is being made available under the Creative Commons, Public Domain Mark.

You can copy, modify, distribute and perform the work, even for commercial purposes, without asking permission.



Wellcome Collection  
183 Euston Road  
London NW1 2BE UK  
T +44 (0)20 7611 8722  
E [library@wellcomecollection.org](mailto:library@wellcomecollection.org)  
<https://wellcomecollection.org>

W/4/11/2/37/Sal/24/284  
BY AUCTION.

SALE CATALOGUE.

# 'PARKFIELD,' OSTERLEY.

W.

On Tuesday,  
14th March, 1916  
& two following  
—days.—

---

---

Mr. H. G. ALAWAY.

---

---

## How to reach the Sale.

---

“**PARKFIELD,**” Osterley, is within 7 minutes of Spring Grove and Isleworth (L. & S. W. Rly.) Station, five minutes of Osterley Park (District Railway) Station, and the electric (L.U.E.T.) system to all parts.

Visitors alighting at the former station should step out into the main London Road, turn to the left, passing the Auctioneer's Office on the right and then take the first turning on the right beyond the Auctioneer's Office, and continue straight on towards St. Mary's Church. “Parkfield” is nearly opposite on the left.

Visitors alighting at Osterley Park Station should turn to the right, then take the second turning on the left, which is Church Road, leading to Osterley Road. “Parkfield” will then be found on the right.

Purchasers are requested to hand in their name  
and address to the Clerk on making their first purchase.

Name .....

Address .....

.....

Form 1041-1 (Rev. 1-1-60) (Do not use for 1959)

NAME OF THE DECEDENT

RESIDENCE OF THE DECEDENT

DATE OF DEATH

STATE OF DEATH

NAME OF THE ESTATE

RESIDENCE OF THE ESTATE

DATE OF DEATH

STATE OF DEATH

NAME OF THE PERSON OR ENTITY TO WHOM THE PROPERTY IS TRANSFERRED

RESIDENCE OF THE PERSON OR ENTITY TO WHOM THE PROPERTY IS TRANSFERRED

DATE OF TRANSFER

STATE OF TRANSFER

NAME OF THE PERSON OR ENTITY TO WHOM THE PROPERTY IS TRANSFERRED

RESIDENCE OF THE PERSON OR ENTITY TO WHOM THE PROPERTY IS TRANSFERRED

DATE OF TRANSFER

STATE OF TRANSFER

# "PARKFIELD,"

Osterley Road, Osterley, W.

## A CATALOGUE

of the whole of the

# VALUABLE CONTENTS

of the above Residence,

COMPRISING :

The Furniture of the Hall - **DINING, DRAWING, BREAKFAST and SMOKE ROOMS** ; the Bedrooms, Servants' Apartments and Domestic Offices, *including*—

**THE COSTLY** and beautifully carved solid mahogany Bedroom Suite,

(an exposition of the finest English workmanship),

The handsome **SATIN WOOD** and **BIRDSEYE** Maple Bedroom Suite, Household Linen, Axminster and other Carpets,

The brilliant-toned rosewood **Grand Pianoforte**, (by the eminent firm of Blüthner, of Leipzig)

The **Orchestrelle Pianoforte Player**, a **VALUABLE COLLECTION OF OIL PAINTINGS & ENGRAVINGS**  
(by well-known Artists)

**The GENUINE Sevres, Satsuma, DRESDEN**

and other Decorative Porcelain, and Cloisonné Enamels,

**The magnificent Pollard Oak Dining Appointments,**

(an example of the finest art of the Cabinet maker),

Antique Bronzes, very fine Ivories, and Bric-a-Brac, Empire Writing Desk, Antique Mahogany Secrétaire Bookcase,

**THE GEORGIAN SILVER, Sheffield Plate,**

a "Milner" fireproof Safe, Angora and other skin rugs, also numerous

**Greenhouse Plants, Motor Accessories, Garden Tools and other effects,**

which will be **SOLD** by **AUCTION** by

---

---

# MR. H. G. ALAWAY

---

---

on the premises as above,

**On TUESDAY, 14th MARCH, 1916, and two following days.**

**at ONE o'clock precisely each day.**

May be viewed on Saturday and Monday prior, by catalogue only (price 6d.) between 10 and 5 o'clock.

Private view by card only, Friday, 10th March, from 10 to 5 o'clock.

Catalogues (price 6d. each) may be had from the Auctioneer,

**LONDON ROAD, ISLEWORTH,**

**Telephone 234 Hounslow.**

## CONDITIONS OF SALE.

1. The highest bidder shall be the buyer and if any dispute arise between two or more bidders, the lot so in dispute shall be immediately put up again and re-sold at the Auctioneers' discretion

2. No person shall advance less than 1s. at any bidding; above five pounds 5s. and so on in proportion; but the amount of the bidding for each lot shall be at the discretion of the Auctioneer and no person shall retract a bidding.

3. In the case of lots upon which there may be a reserve, the Auctioneer shall have the right to bid on behalf of the seller.

4. The purchasers shall give in their names and places of abode, and shall pay down 5s. in the pound, or more, in part payment, or pay the whole of the purchase-money (*if required*) in default of which the lot or lots so purchased may be immediately put up again and re-sold.

5. The Auctioneer shall not be responsible for the correct description, genuineness, or authenticity of or any fault or defect in any of the lots, they making no warranty whatever, nor shall any allowance be made for such errors (if any) and all lots shall be taken away and paid for whether genuine and authentic or not with all faults and errors of description, at the purchaser's expense and risk the day after the Sale. The purchasers of any lot left after the time specified in the conditions for clearance will be liable for any expense that may arise from their lots not having been so cleared.

6. To prevent inaccuracy in delivery and inconvenience in the settlement of the purchases, no lot can on any account be removed during the time of sale except such as shall be paid for at the fall of the hammer and the remainder of the purchase-money must absolutely be paid before delivery of any lot or lots.

7. *Any damage done to the Premises caused by removal or otherwise of any lots must be made good and paid for immediately by the persons committing the same, as the Auctioneer may direct, principals being held responsible for the acts of their agents or servants.*

8. If any purchaser shall neglect or fail to comply with any of the conditions his or her deposit-money shall be absolutely forfeited and the lots uncleared shall be re-sold by public auction or private contract and the deficiency if any on such re-sale together with all attendant and incidental expenses including charge for warehouse or other room shall be paid by the purchaser making default and shall be recoverable as and for liquidated damages, but without prejudice to the right of the Vendor or the Auctioneer to enforce the contract made at the present sale

Cheques will not be accepted in payment and no Lot will be transferred.

*Gentlemen who cannot attend the sale may have their Commissions faithfully executed by the Auctioneer conducting the sale,*

Mr. F. T. HART

# "PARKFIELD," OSTERLEY.

CATALOGUE of MR. H. G. ALAWAY'S

## FIRST DAY'S SALE

On Tuesday, 14th March, 1916. at 1 o'clock precisely

### THE DRAWING ROOM.

The Valuable Collection of Sevres, Dresden, Satsuma and other Porcelain.

#### THE SEVRES PORCELAIN.

LOT

- 1 A pair of 9in. turquoise gilt Sevres porcelain vases with covers, rich decorative portrait panels, signed *Boudinot*, beautifully chased gilt handles, and mounted on chased ormolu stands
- 2 A pair of 10in. manganese gilt and painted Sevres porcelain vases with covers, panels painted with lovers and musical instruments, decorated leaf border, chased ormolu ram's head handles, acorn pattern surmount and ormolu stands
- 3 A 36in. high very valuable Royal Sevres vase with cover, blue de roi background with fluted and raised gold decoration and ormolu mounts on chaste ormolu octagonal stands, signed *Claire Maglen Rochette*
- 4 A 36in. high very valuable Royal Sevres vase with cover to match, signed by the same artist

#### THE DRESDEN CHINA.

- 5 A 10in. high old Dresden china group, with figure of female in shell pattern chariot, gold star pattern wrap supported with mermaids, the base representing the sea with reptiles and shells, oval base measures 9in. long
- 6 A 12in. high old Dresden china group, with figures of female and child, representing rescue of babe in net from various reptiles, on oval base 9½in. long
- 7 A handsome pair of modern Dresden style flower basket vases with figures and raised floral decoration



lot

## THE SATSUMA PORCELAIN.

- 8 **A very fine Satsuma vase**, with decoration of mythical personages, gods and warriors, in fine gold and colours and dragons in white enamel coiled around on the upper part of the vase bearing family crest of Prince Schemazu, a feudal Lord of Satsuma, a beautiful specimen, height 12in., signed
- 9 **A very fine Satsuma vase**, with similar decoration of mythical personages in fine gold and colors and dragons in white enamel coiled around on the upper part of the vase, bearing family crest of Prince Schemazu, a feudal Lord of Satsuma, a beautiful specimen, height 12in., signed
- 10 **A beautiful Satsuma circular deep plate**, with decoration of mythical personages representing gods and warriors in fine gold and colors and dragons in white enamel coiled around border and centre, 9½in. across
- 11 **A beautiful Satsuma circular deep plate**, painted in fine gold and colors, with centre decoration of scroll filled with myriads of heads, borders decorated flowers and figures, 10in. across and mounted on plush
- 12 **A ditto Satsuma circular deep plate**, with decoration in fine gold and colors of multitudinous heads and mythical personages in screen suspended from branches of trees, seascape border, 10in. across
- 13 **A beautiful Satsuma vase**, with decoration in fine gold and colors, of figures and flowers, the neck decorated with dragon and in white enamel with gold head coiled around, height 7in.
- 14 **A very fine Satsuma brazier and cover**, painted fine gold and colors, minutely crackled glaze with panels of flowers, flying stork and figures, the body has two handles and rests on 3 feet, the cover surmounted by a lion, height 4½in.
- 15 **Choice Satsuma pot pourri** of fine cream colored crackle glaze, painted fine gold and colors, panels of flowers and figures, the body has two handles and rests on four feet, the cover surmounted by a lion, height 3in.
- 16 **Beautiful Satsuma teapot** of fine cream colour ground, with fine gold and colour decoration, each side representing groups of figures in landscapes and top surrounded with bands of diaper ornaments, the cover surmounted with animal, height 6in.
- 17 **Beautiful Satsuma coffee pot** of fine cream colour ground, with fine gold and colour decoration, each side representing groups of figures in landscapes with wicker pattern border underneath, bands of diaper ornaments and white enamel borders



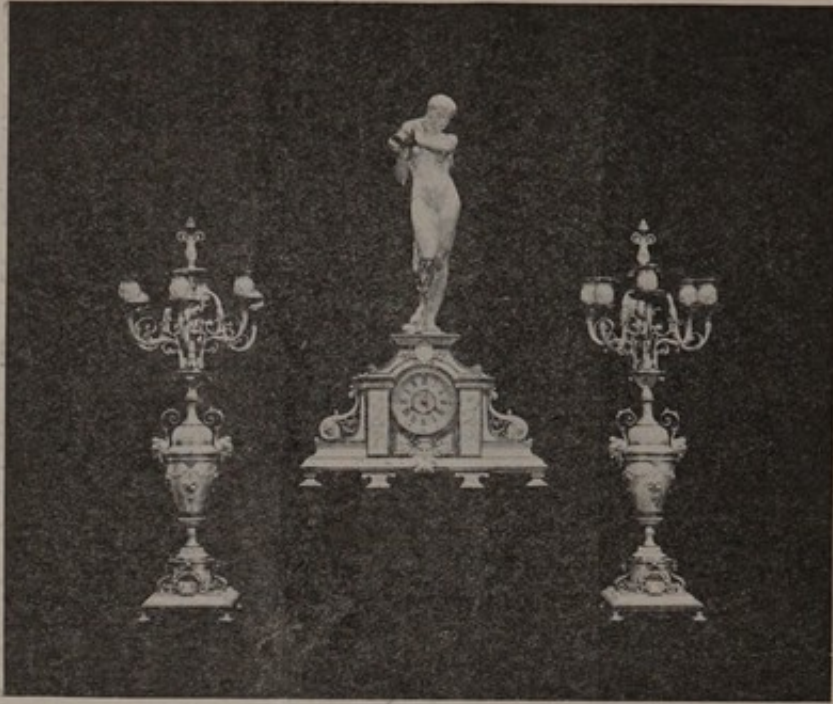
LOTS 3 & 4



Lot 37

Lot 35

Lot 36



Lot 51

Lot 50

Lot 51

Lot	Lot	Lot
26	22	16



Lot 54

LOT

- 18 **Choice Satsuma teacup and saucer** of fine cream colour, minutely crackle glaze with fine gold and colours, representing figures in landscapes with flowers and other ornaments, bands of diaper ornaments, 3 figures in centre of cup, top of cup  $2\frac{3}{4}$ in. across and saucer  $4\frac{1}{4}$ in. across.
- 19 **Ditto Satsuma cup and saucer** of fine cream colour, minutely crackle glaze with fine gold and colours, groups of figures in landscapes, flowers and other ornaments, bands of diaper ornaments, top of cup 2in. across and saucer  $4\frac{3}{4}$ in.
- 20 **Beautiful Satsuma vase** with decorations of fine gold and colours, and very finely decorated with Wisteria, bands of diaper ornaments, the body with 2 handles and the cover similarly decorated,  $5\frac{1}{2}$ in. high.
- 21 **Choice Satsuma flower vase** of cream colour crackle glaze, with decorations of fine gold and colours, the centre having white enamel birds with red plumage, gold figured borders and bands of diaper ornaments, height 9ins.
- 22 **Very beautiful Satsuma flower vase** of cream colour crackle glaze with gold colours, decorated with multitudinous flowers in brilliant colourings and gold bands at top and base, 12in. high.
- 23 **Beautiful Satsuma vase** with rich deep blue ground, having beautiful gold and colour decoration with panels of cream colour ground representing figures, dragons with green enamel and landscape with fighting cocks, height 12in.
- 24 **Similar Satsuma vase** with rich deep blue foundation, having beautiful gold and colour decoration, the panels of cream colour ground with groups of figures in brilliant colourings, height 8ins.
- 25 **Choice Satsuma vase** with rich deep blue foundation, the body decorated with groups of figures representing 'War and Peace' on cream colour glaze, beautiful gold and colour decoration, and having 2 scroll handles with border round top of flowers and figures, raised gold segments and standing on 4 shaped feet, height 8in.
- 26 **Ditto Satsuma vase** with rich deep blue foundation, with decorations of fine gold and colours, beautiful panels on cream colour glaze enriched with groups of figures and landscapes, height 6in.

#### Japanese Cloisonné Enamels.

- 27 **One Japanese cloisonné enamel vase** with rich deep blue ground, with beautiful decorations of flying storks and flowers, 10in. high.

## LOT

- 28 Pair of Japanese cloisonné enamel vases with rich green ground, with beautiful iris floral decoration
- 29 Pair of Japanese cloisonné enamel vases with beautiful decorations of flowers, birds and trees, height  $6\frac{1}{2}$ in. with stands.
- 30 Japanese cloisonné enamel vase, rich deep blue ground, decorated beautiful flowers and green grasses, height  $9\frac{1}{2}$ in.
- 31 Very choice Japanese cloisonné enamel vase with narrow neck, magnificently decorated with silver, gold and blue leaves, height  $7\frac{1}{2}$ in.
- 32 Japanese Cloisonné enamel vase with deep blue ground beautifully decorated with trees, white enamel birds and brilliantly coloured flowers,  $6\frac{1}{2}$ in.
- 33 A similar ditto and hexagonal Japanese cloisonné vase, decorated with green grasses and flowers

## The Green Onyx Vases.

- 34 **Pair of very beautiful green onyx vases**, beautifully decorated and enriched with cloisonné enamel in brilliant colourings, chased gold borders, standing on 4 gilt feet, height  $10\frac{1}{2}$ in.

## The Very Valuable Japanese Ivories—

- 35 **A fine realistic carved ivory figure**, representing the huntsman with axe in hand and fighting against wild animals seeking stork held aloft in left hand, standing on oval base, 4 in. long, and height 10in.
- 36 **Exquisitely carved ivory figure of lady**, delicately figured with fine cut lines and floral ornamentation, ribbon on hair with rose, and holding in hands an open umbrella 5in. across, beautifully decorated, standing on oval base  $3\frac{1}{2}$ in. long, and height  $2\frac{1}{2}$ in.
- 37 **A similarly carved ivory figure of lady**, "The Flower Seller," delicately decorated with beautiful pattern floral and figured dress, with wicker pattern round basket strapped to back, measuring 3in. across, ribbon on hair with rose, the left hand holding strap, and the right hand bunch of flowers, height 10in., standing on oval base with fowl on ditto, 4ins. long
- 38 **Pair of similarly carved ivory figures of Japanese ladies**, delicately decorated with figured pattern, ribbon on hair tied with rose, and holding in one hand an open umbrella 2in. across, and in other hand a beautifully worked fan, height 4 in., and standing on circular base.

LOT

- 39 A **small delicately carved ivory ornament**, representing the Music Teacher with music scroll, beautifully decorated and the pupil learning at his feet

#### The Carved Stands.

- 40 Pair of solid mahogany stands, top 13in., height 10½in., with shell, flower and leaf decorative carving in relief, cabriole legs
- 41 Ebonized stand for plaque with support, a carved ditto stand, 7in. square, on 4 feet, and 2 6in. round carved stands
- 42 Two 5in. circular ebonized stands, a 4½in. ditto, 2 3in. plain round ditto, 4 various, and one stand, top 6in. by 5in.

#### The Louis Quinze Salon Furniture.

- 43 A **5ft. elegant Louis XV. solid mahogany china cabinet**, with large shaped bevelled mirror at back, surmounted with handsome dome, 2 bracket shelves, the front enclosed with right and left display cupboards having panels of carved flowing wreaths encased with plain glass, centre display cupboard with 2 doors, with musical instruments in relief and encased, shelves lined in plush, long shaped under shelf and the whole brilliantly carved with shell ornamentation and foliage in relief
- 44 A **4ft. elegant Louis XV. solid mahogany console table**, on four legs surmounted with shaped back over 5ft. 6in. high, having large bevelled oval centre mirror, 2 shaped ditto on either side, the whole brilliantly carved with floral wreaths, birds terminating in foliage, shell ornaments and carved decoration in relief

#### The Louis XV. solid mahogany drawing room suite, comprising:

- 45 A 5ft. 6in. settee upholstered in silk brocade, the frame brilliantly carved
- 46 Four small chairs do. do., seats in old gold brocade silk
- 47 Two low seats do. do. in green ditto, on castors
- 48 A **Louis XV. solid mahogany armchair**, with silk tapestry upholstery
- 49 A similar ditto ditto

#### The Louis XV. Suite of Mantel Garniture.

- 50 **The very valuable Louis XV. genuine bronze and silvered gilt mantel clock**, of elaborate design, chaste decorated panels with figure head under, and with ornament over, 17in. high, of woman carrying pitcher, striking hours and half-hours on richly toned gong

LOT

- 51 A pair of 26in. high elaborately carved genuine bronze and silvered gilt 6-branch candelabra *en suite*, chased gilt handles with figure heads, delicate carving, on stands with 4 feet
- 52 The very handsome gilt overmantel, Louis XV. period, with large oval bevelled centre mirror, 2 side ditto, each surmounted with chaste classic urns and decorated with wreaths of foliage and Chinese dragons, the base having decorations of festoons and rosettes, after the style of Caffieri
- 53 The very handsome gilt girandole, Louis XV. period, similarly decorated and carved, with 3-branch candelabra

**The Valuable Empire Escritoire.**

- 54 A 2ft. 6in. Empire mahogany lady's escritoire with gilt bronze inlay, mounts and gallery, having circular falling front with full length panel 24in. by 6in., painted with charming love scene, signed *H. Martin*, enclosing 3 drawers, also 3 drawers above and long drawer below

**The Grand Pianoforte and Pianola. etc.**

- 55 The brilliant-toned rosewood grand pianoforte, full compass, trichord action, by the celebrated firm of Blüthner of Leipzig. No. 67916. A magnificent instrument in perfect condition
- 56 The very fine rosewood pianola by the Orchestrelle Company; may be attached to any pianoforte
- 57 The expensive mahogany music stool, with rising seat, box for music, carving in relief, cabriole legs and seat upholstered in silk tapestry
- 58 The mahogany stool for pianola
- 59 Forty-four rolls of musical records in cases for pianola

**The very fine water colours in richly ornate English gold frames :**

- |    |  |                    |
|----|--|--------------------|
| 60 | A choice water colour, by Herbert J. Draper, subject, "A Water Baby" .. .. .       | INCHES.<br>29 x 29 |
| 61 | A ditto lot, by Edward Bisson, subject, "Cupid with his Arrow" ..                  | 27 x 20            |
| 62 | A ditto lot, by the same artist, subject, "The Evening Star" ..                    | 27 x 21            |
| 63 | A ditto lot, by the same artist, subject, "Autumn" .. .. .                         | 22 x 28            |
| 64 | A ditto lot, by W. Zatzka, subject, "The Lovers" .. .. .                           | 24 x 19            |
| 65 | A ditto lot, by the same artist, subject, "Angel with mother and children" .. .. . | 19 x 24            |

LOT			
66	A ditto lot, by Atto Lingner, subject, "Love Awakening" ..	28 x 21	
67	A ditto lot, by T. Lefden, subject, "The Dream of Love" ..	28 x 21	
68	A pair of small water colours, subject, "Bird life," signed Booth	11 x 16	

#### The Ivory Miniature Paintings.

69	<b>Very beautiful miniature portrait on ivory</b> of Madame De Pompadour by Geurin, in bronze gilt frame and glazed ..	6 x 5
70	Another very beautiful miniature painting on ivory, "The Battle of Fontenoy," by L. Pardiel, in bronze gilt frame and glazed ..	7 x 5

#### The massive ornamental Solid Brass Hearth Furniture.

71	A 5ft. curb, beautifully finished
72	Set of 3 fire implements, coal tongs and massive dogs with stop
73	<b>Very fine wrought solid brass three-leaf firescreen</b> , magnificent ornamentation and glazed panels, with each leaf a different height, and with shaped top, Louis XV. style
74	<b>The solid brass "Empire" embossed round coal vase</b> , with cover and lining, figure head ornamentation, ring handles

#### The Nautical Clock, Barometer and other items.

75	<b>Valuable chased ormolu nautical clock</b> , silvered dial, ornamented ship's wheel, with corneleon spikes, 10ins. high, and mounted on oval rope edge pattern base, 7ins. long, by <i>Leuchars &amp; Son</i> , Piccadilly, London
76	<b>Valuable chased ormolu nautical barometer</b> , silvered dial, with corneleon spikes and exactly similar to the previous lot, by <i>the same eminent firm</i>
77	<b>An Empire chased ormolu fruit stand</b> with fluted pillar, raised leaf decoration, delicate borders, 14ins. high
78	The Sheffield plated 3-branch electric table lamp, fluted and chased pattern, with handsome silk beaded shade
79	A <b>very valuable carved pearl fan</b> , with beautiful hand made finely worked old point lace
80	Pair of lace curtains, 3½yds. long
81	<b>The expensive silk damask curtains</b> , lined with marino, silk ball fringe and handsome festoon diaperies, and a pair of heavy cord loops



Lot

- 82 A Japanese silk fan with gilt handle, fancy basket containing artificial flowers, silk table centre, and old china ornament decorated raised flowers
- 83 A pair of Old Staffordshire rabbit ornaments
- 84 Crown Devon ware flower pot holder, decorated roses and medallions, gold border and standing on 3 gilt feet, with aspidestra
- 85 A pure white wool Angora skin rug, 6ft. by 2ft. 6in.
- 86 The very finely figured and bordered Wilton pile carpet, floral design, 18ft 3in. by 15ft. 9in.
- 87 The blue self color felt surround and underfelt for carpet
- 88 Two leopard skin rugs
- 89 Axminster hearthrug, floral design, fringed ends
- 90 Nine expanding beaded cut glass electric shades
- 91 Seven ecru duchesse lace blinds
- 92 Richly decorated Damascus inlaid stool, 19½in. by 16½in.
- 93 Similar do do do
- 94 Another do do do
- 95 Two small feather cushions, a pair of small Worcester vases, 6 plated candle holders for shades and floral pattern flower vase with plant
- 96 A 3-tier brass cake stand with radium glass baskets
- 97 A solid mahogany Sutherland table
- 98 A magnificent steel and silvered massive 5-light electric pendant

#### THE DINING ROOM.

The magnificent Pollard Oak Dining Appointments forming an example of the finest art of the cabinet maker.

- 99 A 7ft. richly marked solid Pollard oak sideboard, having large shaped bevelled mirror to back, about 33in. by 42in., surmounted with massive carved dome, supported with chaste carved pilasters with dental tops, and enclosed with cupboards having dental cornices on each side, the doors of each fitted with 2 long bevelled plain glass panels and 4 small ditto, and having 2 bevelled mirrors 13in. by 6in. under each, the under part of the sideboard being fitted with 2 long centre drawers, 2 short ditto with 2 side cupboards fitted with shelves and cellarette, the front having chaste carving, interiors of cupboards polished, and drawers oak lined throughout

## LOT

100 **The massive Pollard oak chimney piece**, having large shaped bevelled centre mirror about 33in. by 46in., surmounted by massive carved dome, supported with chaste carved pilasters with dental tops, and enclosed with cupboards having dental cornices on each side, the doors of each fitted with 2 long bevelled plain glass panels, and 4 small ditto, and having 2 bevelled mirrors 11in. by 6½in. under each, the whole standing on a finely carved solid massive Pollard oak mantel shelf, 6ft. 10in. long

101 **The 4ft. 6in. very fine Pollard oak dinner wagon**, with two tiers and similarly carved to the previous lots, and having carved shaped pediment, top shelf supported with 4 carved columns, the under cupboard fitted with shelf and interior highly polished, beautifully carved panelled doors

102 **The solid Pollard oak coal cabinet**, similarly carved and beautifully decorated, with falling front having chaste carving, and top surmounted with carved brackets with shelf over with carved pediment, 3ft. 10in. high, and lined (holds 1 cwt.)

**The handsome solid Pollard oak dining room suite, very finely carved, upholstered in olive green velvet :**

103 Six dining chairs at per chair

104 A Carver's chair

105 A ditto ditto

106 A gentleman's armchair

107 A ditto ditto

108 **A 7ft. very handsomely carved Pollard oak settee**, upholstered in curled hair, with covering of olive green velvet

109 **A handsome Pollard oak occasional table**, with shaped top, 36in. by 22in., carved shaped undershelf and carved legs

110 **A Pollard oak butler's tray**, 39in. by 24in., with stand

111 **A 7ft. 6in. solid oak extending dining table** on massive carved legs

THE VALUABLE PAINTINGS IN MASSIVE ENGLISH GOLD FRAMES.

112 A very fine painting in oils, "The Brigand," signed L. P. Spencer, INCHES.  
1853 ... .. canvas 36 x 28

113 A ditto ditto, "The Itinerant Musician" ,, 35½ x 28

- LOT
- 114 A very large ditto, "Welsh Mountain Scenery," by Alfred W. Williams, 1852 ... .. canvas Inches. 40 x 60
- 115 A smaller ditto, framed and glazed, "Australian River Scene—Sunrise" ... .. canvas 35½ x 28
- 116 A similar ditto ditto "Australian River Scene—Sunset" .. 35½ x 28
- 117 A ditto, ditto, ditto, "Woodland Scene" ... .. ,, 22 x 14
- 118 A similar ditto, ditto ... .. ,, 22 x 14
- 119 **The antique bronze statuary, "Orpheus and Eurydice,"** representing the brave attempt of Orpheus, armed only with his golden lyre, to rescue Eurydice from the depths of Hades. The statuary vividly portrays Orpheus followed by Eurydice, just about to pass the extreme limits of Hades, and shows Orpheus looking back to convince himself that Eurydice was really behind him. The glance was fatal, for at that moment Eurydice was caught back, the flames of Hades leaping up around her, and enveloping her again for ever. The bronze statuary is magnificently executed over a realistic base, and is handsomely mounted on a finely figured circular marble stand. Height of bronze, 2ft. 6in. Stand, 4¾in. high, 12in. diameter. (See Illustration)
- 120 **The pair of antique bronze classic urns, having massive covers surmounted with "Young Bacchus"** holding a wine cup in his hand, the urns having two chaste handles, and the circumference portraying a festival of Dionysus (Bacchus), with his devotees surrounding him, and bearing in their hands the Thyrsus, drinking cups, and other instruments. Mounted on finely figured circular marble stands. Height of urns, 16½in. Stands, 4in. high, 9in. high. (See Illustration).
- 121 **The pair of bronze female figures, "Going to and from the Bath,"** delicately worked, 13in. high
- 122 **The handsome pair of bronze figures, "The Geisha Girl,"** charmingly worked with minute detail, 13½in. high.
- 123 **The rare antique bronze statuette, "The Old Story,"** beautifully worked, female wearing rose over her heart, and standing on very fine oval base ornamented with leaves and shepherd's crook, and signed by *Te Herbert*. Height, 14in. Base, 14in. long
- 124 Small antique bronze figure of warrior, 3in. high, on stand

LOT

## The Valuable Georgian Silver.

	ozs.	dwts.
125 A very rare antique tankard and cover, George I., 1721 ..	25	0
126 A rare antique waiter, 6½ins., George II., 1744. . .	10	5
127 Antique ditto ditto, 13ins., George II., 1752 ..	40	0
128 A pair of valuable salts, George II.		
129 A valuable antique teapot, George III, 1786 ..	18	10
130 A valuable plain goblet, George III., 1794 ..	8	10
131 A pair of antique salvers, George III., 1796 ..	25	10
132 A very rare embossed tankard and cover, George III, 1801	22	5
133 A valuable embossed goblet, George III., 1802. . .	13	0
134 A valuable plain cream jug, George III., 1805. . .	3	8
135 An antique cream jug, George III. . .	3	3
136 A ditto ditto George III. . .	4	10
137 A ditto ditto George III. . .	3	10
138 A pair of rare hand-pierced sugar tongs, George III.		
139 A very handsome coffee pot, George III. 1808 ..	31	10
140 A ditto teapot, George III., 1809 ..	11	0
141 The antique asparagus servers, George III. . .	5	17
142 Eight antique Georgian meat skewers ..	16	2
143 Two ditto ditto salts		
144 A ditto ditto valuable plain cruet, with 7 bottles (imperfect)		
145 A rare ditto ditto pierced fish slice, with ivory handle		

## Other Antique and Modern Silver.

146 Very handsome embossed and chased table centre-piece, with chain decorations and standing on 3 claw feet, height 16½in. . . . .	75	0
147 A valuable antique inkstand, with centre-piece. and having two cut glass ink bottles ..	18	10
148 Six antique embossed serviette rings ..	4	12
149 Two very rare antique silver and copper meat dishes		

## LOT

- 150 Silver mounted old cut glass claret jug, handle cover and wide silver rim
- 151 Ditto and cut glass rose bowl
- 152 Similar bowl
- 153 Silver mounted very fine double cut diamonds salad bowl with cut glass handled servers

## The Sheffield and Electro Plate.

- 154 A **genuine Old Sheffield table centre-piece**, forming combination fruit epergne and candelabra, the centre support being of chaste design; fitted with one centre bracket and three side branches, so as to exhibit 3 or 4 lights, and having an old glass fruit dish, 12in. diameter, height 22in.
- 155 An antique Sheffield fine old cake basket
- 156 A set of four antique Sheffield dish covers
- 157 A pair of heavy antique Sheffield decanter stands
- 158 A pair of antique Sheffield plain pierced decanter stands
- 159 A rare antique Sheffield plate tray with snuffers
- 160 A **very rare antique electro plate and gilt plateaux for centre-piece**
- 161 A silver plate oval entrée dish with Gadroon mount, with detachable handle, forms 2 dishes, 11in.
- 162 A similar ditto
- 163 A silver plate handsome plain soup tureen, with 2 handles and ladle
- 164 An open work pierced border electro plate toast rack, and an electro plate butter dish and cover
- 165 An oval beaded edge electro plate bread platter, 14in., having an oval wood tray
- 166 An electro plate kettle with spirit lamp and stand
- 167 A plain silver plated dinner cruet, with 6 richly cut bottles (3 stoppers only)
- 168 A silver plated breakfast cruet, with 4 bottles
- 168a A ditto plain jam dish, with two cut glass dishes
- 168b A **silver plated hand engraved salver**, having handsome shell mount, 12½in.
- 169 A pair of silver plated fish carvers, with ivory handles, in case
- 170 A patent "Milne's" soda water tap

LOT

- 171 A **silver plated tea and coffee service**, consisting of teapot, coffee pot, cream jug, sugar basin
- 172 **Handome polished oak cabinet** fitted with two doors, enclosing 3 drawers replete with 2 carvers and forks, steel, 2 plated knife rests, 12 large knives and forks, 12 small ditto, 8 table spoons, 12 dessert ditto, 12 tea spoons and 4 salts

**The Luncheon and Tea Baskets.**

- 173 **Wicker luncheon basket, 26in. by 15in., completely fitted for four persons**, and having 12 compartments
- 174 Midget wicker tea basket, 11in. by 6in., completely fitted for two persons, having fittings of silver plate on copper
- 175 Wicker basket, 12in. by 9in., containing two Thermos flasks and having two divisions

**The China, Dinner Service and Glass.**

- 176 The **white "Booth's" repousee china dinner service** with gold wreath border decoration, 101 pieces
- 177 A very handsome cut glass spirit set, consisting of bottle, 6 tumblers and circular glass tray
- 178 A pair of very handsome diamond cut and engraved decanters with stoppers
- 179 A handsome panel cut and engraved decanter and stopper
- 180 Eleven finely diamond cut tumblers, 3 ditto with diamond cut bands, and 1 old heavy cut tumbler
- 181 Six diamond cut champagne glasses
- 182 Six    ,,    ,, hock            ,,    *en suite*
- 183 Nine   ,,    ,, port            ,,    ,,
- 184 Six    ,,    ,, sherry        ,,    ,,
- 185 Six star    ,, sherry        ,,
- 186 Six antique finely cut liqueur glasses
- 187 The ruby glass jug, 6 ditto claret glasses and 3 ditto trifle dishes
- 188 A set of three star cut jugs, and 3 soda tumblers

## LOT

- 189 Four oval finely cut trifle dishes, and 4 cut custards
- 190 Four square ditto, and 6 various tumblers
- 191 A set of four round trifle dishes, with scalloped edges
- 192 Two handsome salad bowls, and two cream jugs

## Ornaments, &amp;c.

- 193 A very valuable genuine Old Staffordshire jug. "The Orange Jumper"
- 194 A pair of handsome French vases on stands, cream ground, decorated floral pattern, 2 handles, 19in. high
- 195 A pair of old French ornaments
- 196 The self colour mohair table cover, with plain band and fringed border, 3yds. by 2yds.
- 197 A pair of valuable antique brass candlesticks, each having 12 clear cut glass lustres, fitted nozzles, height  $8\frac{1}{2}$ ins. and bases 3 inches square
- 198 A terra cotta mohair table centre with fringed ends, 2 yards long
- 199 A floral pattern ware flower pot, aspidistra, 2 carved wall brackets, 2 table centres, and head rests
- 200 A green mohair mantel bordering, with handsome fringe
- 35 201 An octagonal "Fox and Geese" board, ivory inlaid with silver, and 26 pegged men
- 202 A patent French coffee machine, with glass vase and lamp, and china syphon
- 203 A pair of finely figured lace curtains
- 204 A pair of handsome figured silk damask curtains, with ball fringe,  $3\frac{1}{2}$ yds. long, festoons and drapery
- 205 The handsome floral pattern borderd pile carpet, 19ft. by 15ft.
- 206 The black wool skin hearth rug
- 207 The underfelt as laid
- 208 An upright grand "Strauss" walnut piano, marqueterie inlay panel, brass sconces, full compass, iron frame
- 209 Three bound vols. songs, 2 bound vols. music, and quantity of sheet music

## LOT

- 210 A very handsome marble mantel clock, with gilt point lace pattern face, bronze embossed border round base, surmounted with lion holding gold ball under foot, 18in. high
- 211 A very fine all brass polished curb, 4ft. by 12ins.
- 212 A set of 3 fire brasses, 2 dogs and stop
- 213 The 3 duchesse linen blinds
- 214 **An Arnold electric vibrator**, 110 volts
- 215 Four furniture polishing brushes, 2 lace antimacassars, 2 cornice roses and 2 wax fruits
- 216 **The valuable and handsome bronze and gilt electrolier** suspended from ceiling, ornamented with gilt figures of flying griffins, and having 5 branches for lights

## THE BREAKFAST ROOM.

- 217 A fancy wicker lady's work basket in new condition
- 218 Three duchesse ecru linen blinds
- 219 A polished oak smoker's cabinet, fitted 2 drawers, and with tobacco jar
- 220 An inlaid burr walnut whatnot
- 221 Fancy wicker arm chair, 2 waste paper baskets, and newspaper rack and bicycle basket
- 222 **A Jones's cylinder shuttle sewing machine**, with improved double feed, treadle motion, and enclosed in handsome carved walnut cabinet case, complete with accessories (new condition)
- 223 A 5ft. stained walnut extending dining table
- 224 A handsome plain green velvet table cover with fringed border, 7ft. by 5ft. 6in.
- 225 **An oval Italian brass wall mirror in finely carved figures and flower pattern frame**, with urn surmounts
- 226 **A similar ditto ditto**
- 227 Four walnut dining chairs upholstered figured Genoa velvet
- 228 A 6ft. ditto frame settee                    ,,                    ,,                    to match
- 229 Two ditto frame nursing chairs       ,,                    ,,                    ,,
- 230 A ditto music stool                         ,,                    ,,                    ,,



Lot

- 231 A handsome gilt chimney glass, 6ft. high
- 232 Pair lace curtains and 3 ecru Duchess blinds, with cornice pole and rings
- 233 A **6ft. antique mahogany sideboard**, fitted with 2 cupboards, centre part 4 long drawers, the back part fitted with mirror 5ft. by 10in.
- 234 An Axminster terra cotta hearth rug, hassock and 4 cushions
- 235 The bordered Brussels carpet as laid, about 5ysd. by 4yds.
- 236 A **valuable "Barker" electric vibrator complete** with all accessories, in new condition, 240 volts, speed 55
- 237 The all brass curb 4ft. by 12in.
- 238 **Very handsome 4ft. antique Spanish mahogany secretaire bookcase**, the upper part fitted 3 shelves, enclosed with shaped glass doors, carved columns, shaped pediment, under part fitted with falling front enclosing drawers and pigeon holes, plush lined, and 2 raised finely figured panelled doors enclosing cellarette with 2 sliding trays over and cupboard fitted 6 drawers
- 239 **Valuable porcupine writing desk**, elaborately inlaid with matara and fowls and fitted 2 ink pots, pen tray, partition, and with leather covered writing slope, size of desk 16½in. by 9in.
- 240 A 3-light brass electric pendant, with radium globes
- 241 **Antique mahogany cigar case** fitted with shutters, and with mahogany tips to secure cigars

#### Ornamental China, etc.

- 242 Pair of very handsome vases with cream ground, decorated floral pattern, 2 handles, 15in. high
- 243 Pair of very handsome hand-painted vases, ormolu mounts, 8½in. high, a tall glass vase, and green floral pattern ditto
- 244 Miniature "Coat of Arms," City of London tea service, 5 pieces, 6 various Coat of Arms ornaments and 20 various ornaments
- 245 A very handsome floral pattern china biscuit barrel, with gold beaded ornamentation
- 246 Blue and gold pattern teapot and stand, heavy gold border
- 247 Two cut salts and a pair cut knife rests

LOT

- 248 **Polished oak tantalum, silver plated**, fitted with patent spring roll front, 1 drawer and 3 finely cut decanters
- 249 A 10½in. high cut glass vase, green centre ditto, ruby water jug and 7 specimen glasses
- 250 A pair of china floral pattern photo frames, 2 smoker's ash trays, and a Worcester china hanging flower pot with fern
- 251 A handsome black and gold cornice pole
- 252 A pair of very large finely figured lace curtains
- 253 Three duchesse ecru linen blinds
- 254 An Australian jam wood walking stick and 3 various articles
- 255 A cocoa well mat, large heavy sand bag draught preventer, and a pair of leather leggings
- 256 **A solid brass door tread** as fixed to front door and measuring 4ft. by 14in.
- 257 A pair of opera glasses in leather case
- 258 Two electric bells, 2 silver cloths, 2 brushes, 3 dust sheets, a useful piece of felt and a gas ring
- 259 A useful deal table with drawer
- 260 Strongly made cash box with fittings (in new condition)
- 261
- 262

### The Engravings.

- |  | INCHES.     |
|--|-------------|
| 263 Large engraving in massive gilt frame and glazed, "King Charles in his State Barge," signed <i>E. Goodall</i> ... ..                         | .. 39 by 27 |
| 264 Ditto ditto, "Coming of Age in olden time," signed <i>F. Holl</i> ...  | .. 41 by 29 |
| 265 <b>The valuable artist's proof engraving</b> , in gilded massive oak frame and glazed, "Breaking them in," signed <i>Arthur J. Elsley</i> .. | .. 36 by 26 |
| 266 Large engraving in ditto frame and glazed, "Othello & Desdemona," engraved by <i>Richard Josey</i> .. .. .                                   | .. 33 by 26 |

LOT

**The Drawings in Black and White, by F. S. Rodgers.**

(a well-known North of England Artist).

267	Large drawing in black and white, in English gold frame and glazed, Inches.	
	" A Cliff Scene "                   . .                   . .                   . .	.. 32 by 24
268	A ditto ditto, " A River Scene "                   . .                   . .	.. 27 by 21
269	A ditto, " A Winter Scene "                   . .                   . .                   . .	.. 24 by 19
270	A similar ditto,                   "                   . .                   . .                   . .	.. 24 by 19
271	A ditto, " A Rocky Coast Scene "                   . .                   . .	.. 32 by 24

**Books.**

	vols.
272 Various novels                   . . .                   . . .                   . . .                   . . .                   . . .	40
273 Thirteen various                   . . .                   . . .                   . . .                   . . .                   . . .	13
274 Temporal Power, by Marie Correlli, 1, and 15 various                   . . .	16
275 The <b>Harmsworth History of the World</b> , bound in cloth, complete in 8 vols.                   . . .                   . . .                   . . .                   . . .                   . . .	8
276 The Reminiscences of Sir Henry Hawkins, bound in cloth, 2, and 3 various                   . . .                   . . .                   . . .                   . . .                   . . .	5
277 King Edward VII., his Life and Reign, by Sir Richard Holmes, unbound and complete in 24 parts, and the Illustrated London News Record of the life and reign of Edward VII. in magazine form, 1 number                   . . .                   . . .                   . . .                   . . .                   . . .	25
278 Life of Queen Victoria, 1 vol., and 10 various                   . . .                   . . .	11
279 Chambers' English Dictionary, bound in cloth, 1, and Pannell's Reference Guide 1                   . . .                   . . .                   . . .                   . . .	2
280 A Physician in the house by J. H. Green, M.D., 1, Sexual Debility, by Sturges, 1, and 7 various Medical Works                   . . .                   . . .	9
281 Twenty-seven bound vols. Punch Library of Humour with oak book rack                   . . .                   . . .                   . . .                   . . .                   . . .	27

END OF FIRST DAY'S SALE.

# "PARKFIELD," OSTERLEY.

CATALOGUE of Mr. H. G. ALAWAY'S

## Second Day's Sale,

On Wednesday, the 15th March, 1916, at 1 o'clock precisely.

LOT

### THE ENTRANCE HALL.

- 282 The inlaid linoleum as planned to hall and side passage, about 27 sq. yds.
- 283 Two solid mahogany hall chairs, richly carved
- 284 A **4ft. solid mahogany hall stand**, richly marked wood, fitted bracket shelf, carved pediment, two drawers under, brass umbrella holder at each end, with zinc lined tray and brass drop handles
- 285 A 4ft. carved black oak hall seat with rug box
- 286 A **fine Old English bracket striking clock**, in handsomely carved mahogany case, silvered dial, Westminster chimes, striking quarters, and also on **eight gongs**, with heavy solid mahogany carved bracket
- 287 An Aneroid barometer and thermometer in carved oak case
- 288 A handsome brass hall lantern electric pendant, starred cut glass
- 289 A set of three hall clothes brushes on mahogany shield, a green glass flower vase, 10in. high, a crimson ground ware vase, fine figured pattern 13in. high
- 290 Two cocoa well mats, 3 crimson slip mats and red bordered cocoa hall mat
- 291 A **handsome china pedestal and flower pot**, rich blue ground and raised work pattern, 4ft. high
- 292 A handsome 4ft. carved black oak hall stand, fitted with mirror and drawer

LOT

## The Oil Paintings and Engravings.

- 293 A painting in oils in massive gilt frame, "An Australian Cliff Scene," signed W. Mason, 1812
- 294 A very old small painting in oils, in ditto frame, "Home Scene"
- 295 A large engraving, framed and glazed, "Monarch of all I survey"
- 296 A similar ditto ditto, "The Stag at bay"

## THE STAIRCASE AND PRINCIPAL LANDING.

- 297 A 3-light electrolier
- 298 The blue ground Axminster stair carpet as laid, 22in. wide, and the body carpet as laid to landing, about 23 yards in all
- 299 About 30 heavy brass stair rods, 4 old gold mohair slip mats, lace curtain & rod
- 300 A pair of crimson plushette curtains and brass portiere rod

## The Water Colours in Gilt Frames.

- 301 Water colour in gilt frame and glazed, "River Scene," signed G. E. Newton
- 302 Similar ditto ditto " "
- 303 Similar ditto ditto "Swans on river," signed S. Smith
- 304 Similar ditto ditto "Brook Scene," " "

## No. 1 BEDROOM.

- 305 A 6ft. 6in. box ottoman couch upholstered silk tapestry, spring buttoned-in seat and head, hair stuffed, mahogany frame, cabriole legs
- 306 "**Milner**" patent improved fire-resisting safe, rounded corners, 26in. high, 20in. deep and 20in. wide, interior having two useful drawers
- 307 Burr walnut fancy round occasional table with carved feet
- 308 Old gold wool skin hearthrug 5ft. by 2ft. 4in., and 2 small slip mats
- 309 Gilt pier chimney glass, plate measuring 4ft. by 3ft. 2in., frame ornamented with raised shell and decorative leaf pattern

## LOT

- 310 Eight-day green onyx mantel clock, brass face, Corinthian column, striking hours and half hours on richly toned gong
- 311 Pair of richly cut antique glass lustres, 12in. high
- 312 Pair of richly cut glass night light holders and mantel board with old gold figured velvet border
- 313 Pair of pink ground 2-handled vases with portrait panels
- 314 Pair of small ornamental figures of angel and child, a pair of 6in. green and gold floral pattern vases, a blue and gold pattern flower pot holder with aspidestra and cut glass water bottle and tumbler
- 315 Pair of white lace curtains, 3½ yards long
- 316 One white Marcella counterpane—full size
- 317 A similar ditto
- 318 The green ground bordered Axminster carpet, floral pattern, 13ft. 6in. by 10ft.
- 319 The matting pattern linoleum as planned to room, about 33 sq. yards
- 320 A 4ft. 6in. all polished brass seat fender, upholstered velvet cushions
- 321 The blue and gold floral pattern double toilet set comprising 2 ewers and basins, brush vase, sponge dish and drain, soap dish and cover, chamber pail and 2 chambers
- 322

**The Oil Paintings in Old English Gold Frames.**

- 323 A beautifully colored painting in oils, 25in. by 19½in., in ornamented gilt frame and glazed, subject "Sunday Evening," and signed E. Eastman
- 324 A similar ditto ditto, 25in. by 19½in., in companion frame, subject "The Last Gleam," and signed by the same artist

**The Cristolian Paintings.**

- 325 A brilliantly colored painting, framed with plush mount in massive gilded oak frame, subject "A garden scene"
- 326 A similar painting, framed with companion frame, subject, "Wait a minute," Arthur J. Elsley

Lot

- 327 A similar ditto, framed with ditto frame, subject, "The Proposal"
- 328 A similar ditto ditto, subject, "Good-bye," Arthur J. Elsley
- 329 A similar ditto ditto, subject, "The Lady Painter," signed Arturo Ricci
- 330 A similar ditto ditto, subject, "Afternoon Tea"
- 331 A smaller ditto, subject "Portrait of a lady with mirror"
- 332 A similar ditto ditto, subject, "Lady swinging on bough"

**The very valuable and highly ornate richly marked solid mahogany bedroom suite, comprising:**

- 333 A 7ft. wardrobe, right and left wings, hanging accommodation with bonnet shelf, full length bevelled shaped mirrors (5ft. 9in. by 1ft. 5in.) to doors, centre part fitted with cupboard with 4 solid sliding trays and having two doors, panels with carved ornament consisting of twisted ribands, scrolls with flowers charmingly disposed and musical instruments introduced, 4 long drawers under with chaste carving, dental cornice, pediment with large centre ornament shell, fretwork scroll, brass drop handles, interior of wardrobe polished throughout
- 334 A 4ft. 6in. toilet table, centre shaped bevelled swing mirror (about 20in. by 28in.), with ornate top, 2 jewel compartments on 4 decorated supports with fretwork ornament over, 2 long and 2 short drawers with chaste carving, shaped under shelf, cabriole legs, brass drop handles. interior polished
- 335 A 4ft. 3in. washstand with finely figured marble top and back, surmounted with full length bracket shelf, centre shaped bevelled mirror over, under part with centre drawer, 2 chamber cupboards, long shaped under shelf, cabriole legs, richly carved and decorated, interior polished
- 336 A bedside pedestal similarly carved and ornamented with chaste decoration, cabriole legs, interior polished
- 337 A double towel rail to match
- 338 A set of 3 chairs *en suite* with richly carved ornamentation, seats upholstered in silk tapestry

## LOT

- 339 A **3ft. by 6ft. 6in. richly marked solid mahogany bedstead** to match suite, ornamented and decorated with similar carving having large centre shells, chaste panels, elegant legs
- 340 A 3ft. wire woven spring mattress to fit
- 341 A 3ft. by 6ft. 6in. richly marked solid mahogany twin bedstead
- 342 A 3ft. wire woven spring mattress to fit
- N.B. This suite and the bedsteads comprise an exposition of the finest English workmanship.*
- 343 A 3ft. box spring mattress, all hair stuffed
- 344 A 3ft. similar ditto ditto
- 345 A 3ft. all hair mattress in best quality tick
- 346 A 3ft. similar ditto ditto

#### The Electroliers and Blinds.

- 347 A handsome 2-light electrolier
- 348 Two single light electric pendants
- 349 Three linen blinds

#### No. 2 BEDROOM.

- 350 A 4ft. 6in. heavily mounted brass and iron half tester bedstead, 2 inch pillars, fitted swing arms, and silk tapestry draperies
- 351 A 4ft. 6in. wire woven spring mattress
- 352 A 4ft. 6in. wool mattress in best striped tick
- 353 A 4ft. 6in. feather bed
- 354 A 4ft. 6in. feather bolster and feather pillow

#### The very handsome and expensive satinwood and birdseye maple bedroom suite--

- 355 A 6ft. 6in. wardrobe, right and left carcasses with hanging space fitted with shelf, and full length shaped bevelled mirrors 5ft. by 1ft. 4in. to doors, centre part fitted with cupboard with panelled doors, and having shaped drawer under, long bevelled mirror, 3 long and 2 short drawers, cornice ornamented with carved panels and carved pediment



## LOT

- 356 A 4ft. dressing chest, 2 long and 2 short drawers, large centre swing mirror 27in. by 17in., top surmounted with carved spindle work gallery 28 inches high, fitted 2 corner jewel cupboards, doors fitted bevelled plates and lined plush and sides fitted with pair of full swing reflectors
- 357 A 4ft. washstand with rouge marble top and back fitted with shaped shelf over, over, centre shaped bevelled mirror about 17 inches square, carved panels and pediment and under part fitted 2 drawers and 2 chamber cupboards with carved panels
- 358 A pedestal cupboard, with oval bevelled mirror and shelf over, carved panels
- 359 A double towel rail
- 360 A set of 4 satin walnut chairs, seats upholstered in plain velvet

## Pictures.

- 361 A **Cristolian** painting, brilliant colour, gilded and plush mounts and framed in massive gilt frame, "Feeding the Pigeons," after R. Vogler
- 362 A pair of oblong coloured prints, birds, "An English Team" and "An Australian Team" in genuine old English gilt frames
- 363 A pair of water colour prints, signed *Engmon Semenowsky*, and framed in genuine old English gilt frames with beaded edging

## The Linen, Etc.

- 364 A large linen bedspread with handworked border and centre piece
- 365 Five handworked and frilled linen pillow slips, 2 filled linen bolster slips and 2 ditto pillow slips
- 366 Four twill bolster slips, 3 twill pillow slips, 2 Duchesse toilet covers, and a linen bedspread with fancy pattern
- 367 A pair of large twill sheets
- 368 A pair of small ditto
- 369 A large white counterpane
- 370 A ditto ditto
- 371 A ditto ditto
- 372 A ditto ditto

## LOT

- 373 A pair of lace curtains
- 374 Ditto ditto
- 375 Ditto ditto
- 376 Ditto ditto
- 377 Ditto ditto
- 378 Ditto ditto
- 379 Ditto ditto
- 380 Ditto ditto
- 381 Ditto ditto
- 382 Ditto ditto
- 383 Ditto ditto
- 384 Ditto ditto
- 385 A pair of plushette curtains
- 386 Ditto ditto
- 387 Ditto ditto
- 388 Two ditto ditto
- 389 A pair blankets
- 390 Ditto
- 391 Ditto
- 392 Ditto
- 393 Ditto
- 394 Ditto
- 395 Three blankets
- 396 A pair of blue pattern cretonne curtains,  $3\frac{1}{2}$  yards long
- 397 Two dozen lace and other antimacassars and d'oyleys, and 6 pairs of curtain loops
- 398 A set of cretonne bed draperies with canopy & a large net muslin mosquito case
- 399 Two feather cusoions, two bed valances, a pair of pillow shams and 5 lace toilet covers
- 400 A pair of silk damask curtains

## LOT

- 401 Three Ecrú Duchesse blinds
- 402 A large skin rug for motor
- 403 The uniform and cap for page boy
- 404 An expensive mackintosh

## Sundries.

- 405 An excellent cornice pole
- 406 The two-light brass electric pendant
- 407 Walnut music canterbury with under drawer
- 408

## Ornamental Items and Sundries,

- 409 Green art pattern toilet ware, 5 pieces, blue and gold pattern trinket set, 9 pieces, cut "star" pattern and engraved water bottle and tumbler, pair of gilt-handled ornaments and 2 white chambers
- 410 Small oak palm stand and blue ground Axminster fainged rug
- 411 Old gold skin hearthrug, pair of crimson plushette door curtains and a length of ditto
- 412 Invalid's mahogany frame chair with cane seat and back, ditto leg rest and 2 cushions in cretonne with loose covers
- 413 A 3ft. 9in. fender with brass rail, massive rope pattern poker, ditto tongs, ditto shovel and 2 rests
- 414 White enamelled clock, pair of fancy glass raised pattern vases, pair of 14in. 2-handled vases, ornamented red and gold leaf pattern
- 415 The best quality inlaid carpet pattern linoleum as planned, about 26 yards

## No. 3 BEDROOM.

- 416 A 4ft. 6in. brass mounted green art bedstead
- 417 Wire woven spring mattress and felt cover
- 418 A 4ft. 6in. kapock bed in striped tick
- 419 Three stained walnut bedroom chairs
- 420 A 4ft. 6in. kapock bolster

LOT

**The carved walnut bedroom suite, comprising—**

- 421 A 4ft. double hanging wardrobe, 2 drawers under, 2 full length mirrors shaped pediment
- 422 A 3ft. 6in. dressing chest, 2 long and 2 short drawers, 2 jewel cases with bevelled glass doors, and bevelled swing glass, 17½in. by 23½in.
- 423 A 3ft. 6in. washstand with rouge marble top and back, and fitted 2 long and 2 short drawers
- 424 Pedestal cupboard
- 425 Inlaid centre oval table on 4 feet, and small chenille table cover
- 426 Carved walnut overmantel with 9 small side mirrors and centre plate 19½in. by 25½in.

**Ornaments, Etc.**

- 427 Pair of 13½in. glass lustres, pair of 10in. 2-handled vases with covers, white biscuit ware ornament (Rock of Ages), pair of 9in. 2-handled gilt vases, 4 other ornaments and a 5ft. mantelboard and tapestry bordering
- 428 Pair of hand-painted wall plaques
- 429 The pink, gilt and rose pattern trinket set of 15 pieces and the cream ground and rose pattern toilet set of 5 pieces
- 430 Two portraits in old English gilt frames and a pair of engravings in oak frames "Too Hot" and "No Reprieve"
- 431 A 4ft. 6in. heavy brass curb, poker, tongs, shovel and rests
- 432 **Handsome massive wrought brass fire screen**, with diamond shaped bevelled mirror ornamented with head of dog
- 433 The matting pattern linoleum as planned to room, about 23 sq. yards
- 434 The floral pattern tapestry bordered carpet, 3 yards by 3½ yards
- 435 Brass cornice pole, pair of lace curtains, 3 yards long and 3 linen blinds with lace insertion

**The Engravings—signed F. S. Rodgers.**

- |   | INCHES. |
|---|---------|
| 436 Large engraving, framed and glazed, "Peel Castle" . . . . . | 33 x 24 |
| 437 A ditto ditto . . . . .                                     | 36 x 27 |

LOT

## Sundries.

- 438 Green ground Axminster hearth rug
- 439 A two-light electric pendant
- 440 A single light ditto

## THE DRESSING ROOM.

- 441 **A 4ft. very fine solid mahogany chest** of 3 long and 2 short drawers, carved fronts, oak linings
- 442 Mahogany dressing table fitted two drawers
- 443 Antique mahogany toilet glass, fitted 2 drawers, cut glass handles
- 444 Mahogany washstand with figured marble top, fitted three drawers
- 445 Rose pattern 6-piece toilet set and a pink and gold 5-piece trinket set
- 446 Pair of plaques, two oak brackets, scent spray, two ornaments, picture of cat and two aspidistras in pots
- 447 One cane-seat chair, flower pot and towel rail and fancy wicker linen basket
- 448 **Polished oak "Service" trousers presser**, having plated fittings, to take six pairs
- 449 Colored print, framed and glazed, "Harmony" (English gold frame)
- 450 Painting in oils, framed in ornamental gilt frame, signed by Priestley
- 451 **A 5-octave harmonium in mahogany case, by William Bogg & Sons**
- 452 The inlaid carpet pattern linoleum as laid, about 10 sq. yards
- 453 A pair of lace curtains and Duchesse blind
- 454 A water bottle, and 5 various articles
- 455 A single-light electric pendant

## THE BATH ROOM.

- 456 The inlaid tile pattern linoleum as laid, about 9 square yards
- 457 White enamel wall mirror, bevelled glass, 21in. by 15in.
- 458 Mahogany towel rail, cork mat, metal sponge rack, bath seat and bath brush
- 459 A bentwood stool, sanitary paper holder, and about 6ft. brass nosing
- 460 Metal brush stand with two tumbler holders, and brush tray, with 2 mother-o'-pearl photo frames
- 461 An ecru Duchess blind, and lace curtain

LOT

## SPARE ROOM.

- 462 A 4ft. black and iron japanned bedstead  
 463 A ,, wire woven spring mattress and felt cover  
 464 A ,, feather bed and bolster  
 465 A walnut occasional table  
 466 A skin carriage rug mounted on green cloth, 6ft. by 4ft.  
 467 A brass fender with 3 brasses and stop  
 468 A large deal linen chest, 5ft. by 2ft.  
 469 A green ground figured art carpet, 12ft. by 14ft.  
 470 Three linen blinds, dwarf lace curtain, coloured print  
 471 A lady's walnut dressing case, fitted with mirror, and toilet requisites  
 472 **Vacuum carpet sweeper** all complete  
 473 Fourteen black and white china finger plates, 13 small ditto, 4 white china knobs, and 10 fancy pattern tiles

## SERVANTS' BEDROOM.

- 474 Large Union Jack flag  
 475 Large white Ensign ditto  
 476 Nine various flags  
 277 A 3ft. 6in. grained deal duchesse chest, fitted with 2 jewel drawers  
 478 A 3ft. 6in. grained deal combination chest of 2 long and 2 short drawers and washstand with tiled back  
 479 Two cane seat chairs, towel rail, 2 Axminster slip mats, and fire screen  
 480 The rose pattern ware ewer and basin, brush vase, soap dish and cover, glass water bottle, pair of 10in. ware plaques, and chimney glass  
 481 Pair of engravings, "Belle Isle, Windermere" (F. W. Hayes) in oak frames, large blue coloured drawing, signed Yeenn King, in gilt frame, and 3 coloured pictures, framed  
 482 Oil painting, "Near Cannock Chase," signed E. Priestley, measuring 26½ins. by 17ins., in massive gilt frame and glazed  
 483 Similar oil painting, "Gipsies near Spennymore," signed by the same artist

- LOT
- 484 Four various lengths of oilcloth
- 485 A 3ft. iron French bedstead and wire woven spring mattress
- 486 A 3ft. flock, flock bolster and pillow with slips
- 487 Pair of twill sheets, wool blanket and white quilt
- 488 About 4½yds. Brussels carpet, 27ins. wide
- 489 About 7yds. tapestry stair carpet, 18ins. wide and 11 22in. brass stair rods
- 490 A **long distance telescope in case, 25ins. long**, by Charles Berry, Aberdeen
- 491 Brass rising portiere rod, brass frame fancy fire screen and large gilded cornice
- 492 Japanese 4-fold screen
- 493 Wood massage roller and hand-made white wool shawl, and a large red ground rug, 8ft. by 5ft.
- 494 The carpet pattern linoleum as laid, 15ft. by 11ft.
- 495 Brass ash pan, small oak trunk, 3 odd blinds and a steel trivet
- 496 Four eceru blinds, 2 plain blue ditto and 1 sun blind
- 497 Two rolls of linoleum
- 498 The linoleum as laid
- 499 One cedar wood box
- 500 Four mahogany dining room chairs with seats upholstered in pegamoid
- 501 A **new green ground Axminster bordered carpet, 19ft. by 16ft.**
- 502 The underfelt for ditto
- 503 Two mahogany cornice poles and 1 bamboo ditto
- 504 Three brass rods, a brass stair nosing and 5 various articles

END OF SECOND DAY'S SALE.

Catalogue of Mr. H. G. ALAWAY'S  
**Third Day's Sale**

On Thursday, the 16th March, 1916, at 1 o'clock precisely.

---

THE SMOKE ROOM.

LOT

- 505 A walnut inlaid music cabinet, fitted with interior shelves, enclosed by plain glass door
- 506 **A 5ft. walnut inlaid cheffonier**, having shaped back, fitted with large mirror and bric a brac shelves, the lower portion forming three cupboards, each with interior shelves, enclosed with mirror panelled doors, and having 2 small drawers above with marble top
- 507 An excellent fumed oak roll top desk, with drawers to each pedestal, and interior having the usual stationery compartments
- 508 A very fine pier glass in carved gold frame, 4ft. 8in. high
- 509 A handsome marble cased mantel clock, with chaste ornamentation and decorated with brass columns on either side
- 510 A pair of massive bronzed and composition mantel ornaments, representing "Robert Bruce" and "Edward the First"
- 511 A capital brass fender with set of three fire brasses and stop
- 512 A green "Salamandre" anthracite stove
- 513 A ditto ditto
- 514 A dozen Radium and various gas and electric globes
- 515 A walnut coal vase, and an Axminster hearth rug

The Mahogany Furniture.

- 516 **An exceptionally well-made telescopic dining table in solid mahogany** extending to 8 feet
- 517 A well-made couch in mahogany frame, upholstered in plain silk plush



## LOT

- 518 A set of six strongly made dining chairs in carved mahogany frames, upholstered in plain crimson velvet
- 519 A set of six ditto ditto *en suite*
- 520 A well-made arm chair in mahogany frame, upholstered in plain crimson velvet
- 521 A similar ditto ditto
- T** very fine Drawings in Black and White by F. S. Rodgers  
(A well-known North of England Artist).
- 522 A magnificent pair of drawings in black and white, framed and glazed, "A Rocky Coast Scene"
- 523 A pair of ditto ditto, "A Typical Scotch Scene"
- 524 One finely executed drawing in black and white, framed and glazed, "Lake Windermere"
- 525 A similar ditto ditto, "The Ruins of a Stately Castle"
- 526 A ditto ditto, "The Castle on the Rock"

## The Sundry Items.

- 527 The figured and bordered Axminster carpet as laid
- 528 The linoleum and oilcloth as planned to cover room
- 529 A crimson plushette door curtain, brass portiere rod, 2 feather cushions, long-handled hearth brush, and two dwarf lace curtains
- 530 The felt cover for preserving the top of the dining table
- 531 A **5-chamber revolver by Smith & Wessen** and a whalebone life preserver
- 532 A "British" Vacuum carpet sweeper
- 533 A useful two-light electrolier
- 534 A **capital "Nautilus" stove**, having cast iron and brass facings
- 535 A brass Smoker's Companion, replete with cigar rest, cigar cutter and match stand
- 536 A three-tier nest of drawers, wicker paper basket, small mahogany writing desk, tin box, 2 ecru linen blinds, and 2 cornice poles
- 537 A large floral china vase, a tall pink colour vase, a 2-handled green ground china vase, 1 plate on wall, and coloured print framed and glazed
- 538 A set of 14 linen loose covers for chairs
- 539 A set of 3 ditto ditto for arm chairs

LOD

## THE KITCHEN.

- 540 The best quality inlaid tile pattern linoleum as planned, about 22 sq. yards
- 541 The well-made 5ft. deal kitchen table
- 542 Three ebonised Bentwood chairs
- 543 Three ditto ditto
- 544 Three ditto ditto
- 545 A capital rocking chair
- 546 **An 8-day carved walnut case wall clock**, cream figured dial, Vienna regulator, length 48in.
- 547 A well-made polished oak tea tray, fitted with two handles, 18in. in length, and a triangular pattern embossed white metal crumb tray
- 548 A 4ft. 3in. steel top kitchen fender and 4 steel fire irons
- 549 Two earthenware bread pans, 2 sieves and 1 enamelled bowl
- 550 **A "Kent's" patent knife cleaning machine**
- 551 Pastry board and roller, enamelled ewer, 2 whisks and 12 cooks' utensils
- 552 **A "Salter's" weighing machine**, to weigh 7lbs.
- 553 A set of five plated meat covers
- 554 Large bamboo roller linen ailer, fitted with wheels and cords
- 555 Excellent mangle.

## The Coppers.

- 556 Very fine 16in. copper preserving pan
- 557 Capital large copper kettle
- 558 One useful copper saucepan
- 559 Two smaller ditto and useful copper tray, and 7 copper patty tins

## The China and Sundry Utensils.

- 560 The blue, gold and floral pattern "Coronet" opaque china dinner service, consisting of 45 pieces
- 561 The pansy pattern and gilt edge breakfast and tea ware, 36 pieces
- 562 The rose pattern with light blue border breakfast and tea ware, comprising 6 egg cups, 2 bread and butter plates, 5 plates, 6 saucers, slop basin, 2 cups and milk jug

LOT

- 563 A handsome blue, gold and brown B. & B. plate, 5 odd saucers, basin, 3 china teapots and 2 japanned trays
- 564 Six white fluted coffee cups, 6 saucers, muffin dish and cover and various cups, and 14 odd saucers
- 565 The deep blue border and figured pattern tea ware. 24 pieces
- 566 A three-part cheese and biscuit dish, 2 small white ware jars and covers, and 3 white and floral pattern jugs
- 567 A set of three white and floral pattern jugs
- 568 A large tin fish kettle complete
- 569 A **large well-made parrot's cage**, with aluminium feeding and drinking troughs
- 570 One circular parrot's cage

#### BUTLER'S PANTRY.

- 571 A brass foot warmer and ditto hot water can
- 572 A seltzogene, cobweb brush and 6 various articles
- 574 A **Bissell's carpet sweeper**
- 575 The blue and white inlaid linoleum as planned, about 7 square yards
- 576 A teak sink draining board, 2 wire meat dish covers, papier maché bowl, 2 enamelled soap holders and small spirit lamp and kettle
- 577 A collapsible hat and coat rack, 3 small boxes, tin hat box, 8 glass sundries, a long-handled carpet broom and a large jug
- 578 Twelve various gas globes and 6 electric ditto
- 579 The various articles on shelf

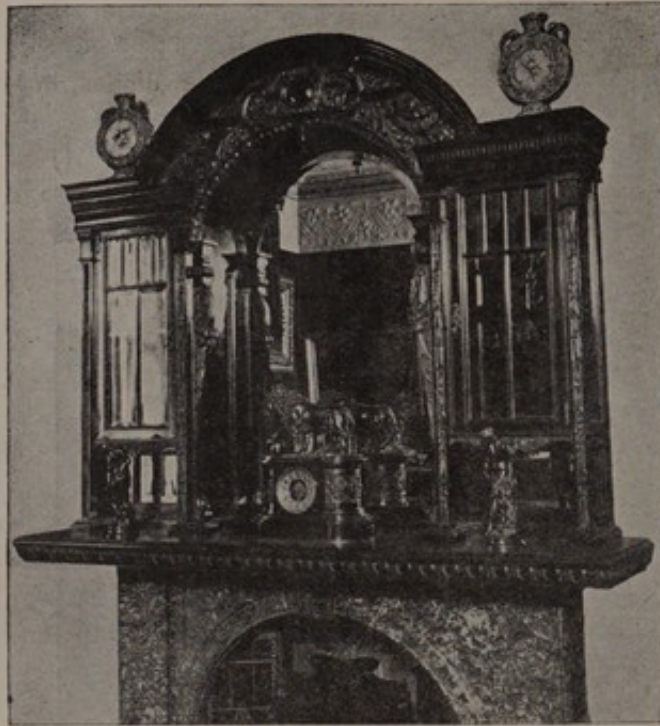
#### The Medicinal Glass Instruments.

- 580 Five medicine glass measures and 2 glass funnels
- 581 A set of testing tubes in case
- 582 A Thirmo-Urinometer in case
- 583 A glass Albimometer in case



Lot 99

The Bronze Statuary in Centre is Lot 119



Lot 160

LOT

## SCULLERY.

- 684 The **capital "Duck" gas cooking stove, having a solid copper hot water boiler**, with brass tap, and fitted with excellent oven; the under part has a useful plate warmer, and there is also a gas ring with piping attached, Height 26in., length 22in., depth 11in.

*This Lot is in perfect condition, and equal to new.*

- 585 An enamelled gas ring with length of piping
- 586 An enamelled colander, small Dutch oven, 1 gravy strainer, 2 tin plates and 2 aluminium saucepans
- 587 Four large baking tins, fish slice, 3 large metal basting spoons and 1 gridiron
- 588 Four fry pans, 2 fry baskets, four white ware pie dishes, 5 ditto pudding basins and 1 kneeler
- 589 One iron boiler to hold 5 gallons, in excellent order
- 590 One ditto       ,,     3     ,,       ,,
- 591 A galvanized Dolly tub, a large stoneware jug, 2 iron shovels, a set of stove brushes, 2 cake tins, 3 boot brushes and knife board
- 592 A deal washing stool and 5 washing pails
- 593 Two cocoa mats
- 594 A wooden mallet, 3 wood cook's spoons, knife box, 6 spoons, 2 knives and forks and 40 various patty tins
- 595 A mincing machine and 2 large enamelled saucepans
- 596 Two zinc baths and enamelled slop pail
- 597 Four iron saucepans and 2 flat irons
- 598 Three ditto       and 3 ditto     and stand
- 599 An enamelled double milk saucepan and 2 others
- 600 An iron kettle and 2 saucepans with steamers
- 601 All the articles on shelf

## THE VERANDAH.

- 602 Barometer and thermometer in polished oak case
- 603 Three deck chairs
- 604 Two small wicker chairs containing two finely carved seated china figures of boy with bag and girl with tambourine, figures measure about 2ft. 6in.

lot

- 605 The tile pattern inlaid linoleum as planned  
 606 The sun blind as fixed to wall  
 607 **An oval gate-legged oak table**

### THE CONSERVATORY.

- 608 An excellent anthracite stove  
 609 A pair of 5-tread steps

### The Plants.

- 610 Very fine flowering cactus in large pot  
 611 Two fuchsias, 2 maidenhair ferns and 5 geraniums  
 612 Small begonia, 3 maidenhair ferns and 6 various  
 613 Very fine large fuchsia in large pot  
 614 Ditto ditto begonia in flower in pot  
 615 Three agapanthus umbellatus and 2 small fuchsias  
 616 Three aspidistras, fuchsia and 2 begonias  
 617 One aspidestra, 4 maidenhair ferns and 3 various  
 618 Large fuchsia and a large begonia  
 619 Similar lot  
 620 Four fuchsias, 4 geraniums and 2 maidenhairs  
 621 Large cactus, 2 fuchsias and 3 various  
 622 Six various  
 623 Two fine fuchsias, a large cactus, 1 maidenhair fern and 1 geranium  
 624 Large cactus and 5 various  
 625 Ornamental green fern in box  
 626 Ditto ditto  
 627 Ditto ditto  
 628 Ditto ditto  
 629 A very fine large begonia in pot

LOT

## AT THE GARAGE.

- 630 The "Little Palace" oil heating stove with brass container and 7 bundles of dahlia sticks
- 631 Seven rolls of wire netting
- 632 Two brass electric brackets, 1 ditto pendant and 2 Radium globes
- 633 **A valuable brass vulcanising set in case, by Harvey Frost & Co.**
- 634 A swing garden hammock with canopy, and a box containing about 70 fairy lights
- 635 **A valuable small electric motor, by H. Schall, 110 volts, and an electric resistance board, charge switch board and 2 electric coils**
- 636 Thirty-nine short lengths of trellis work, 24in. wide, and 9 long lengths of ditto, 36in. wide
- 637 Quantity of electrical fittings, part new, in box
- 638 The **valuable Atlas Impulse motor tyre pump** fitted with guage
- 639 The watering cans, 12 iron brackets and coil of useful wire
- 640 **A metal electric volt tester and a 4-volt accumulator**
- 641 An excellent oak letter box, fitted with Yale lock
- 642 Six useful bench boards
- 643 A deal bench table, fitted with 5 drawers, 6ft. 6in. by 2ft. 6in.
- 644 A fall oak wall table and a pair of 5-tread steps
- 645 A quantity of muranese and plain glass in box
- 646 A **heap of old iron**
- 647 Five small brass bolts, brass tread and quantity of brass and iron screws, and small iron plane
- 648 Twenty-five very useful workshop tools
- 649 A steel drinking trough for chickens

## The Garden Tools.

- 650 Two Dutch hoes, a flat hand hoe, a long rake and a short ditto
- 651 Pair of lawn border shears, a grass trimmer and a pair of hand shears
- 652 Fork, spade, daisy digger, hand trowel, ditto divell, a small hand fork and a pair of pruning shears
- 653 A "Rapid" rose syringe in new condition



LOT

**The Coals and Firewood.**654 About  $\frac{1}{2}$ -ton of coal and a quantity of firewood logs**In the Garden.**

655 Large steel open pattern door mat 5ft. 6in. by 3ft. 9in.

656 Large dog kennel

657 A 6ft. garden seat painted green

658 The North British Rubber hosing with brass fittings, about 60ft., and hose reel

659 Similar lot

660 An 18in. iron garden roller

661 **A Green's 10in. Silens Messor lawn mower**, complete

662 Wheelbarrow and 2 anthracite buckets and fittings

663 About 100 flower pots

664 ,, 12 rhubarb ,,

665 A quantity of useful fruit netting

**END OF SALE.**

## **ORDER OF SALE.**

---

### **FIRST DAY—Tuesday, March 14th.**

(LOTS 1 TO 281).

THE FURNISHINGS OF THE DRAWING ROOM,  
DINING ROOM, BREAKFAST ROOM, PAINTINGS,  
DRAWINGS, ENGRAVINGS, PORCELAIN,  
BRONZES, SILVER AND PLATED WARE.

### **SECOND DAY—Wednesday, March 15.**

(LOTS 282 TO 504).

THE FURNISHINGS OF THE BEDROOMS, HOUSE-  
HOLD LINEN AND DRAPERIES, STAIRS AND  
LANDINGS, ENTRANCE HALL, AND  
DECORATIVE FURNITURE.

### **THIRD DAY—Thursday, March 16th.**

(LOTS 505 TO 665).

THE FURNISHINGS OF THE SMOKE ROOM,  
KITCHEN UTENSILS, LINEN, CHINA AND GLASS  
AND OUTDOOR EFFECTS.

TRAINS FROM LONDON. L. & S.W.R.

WATERLOO.	CLAPHAM JUNCTION.	PUTNEY.	ISLEWORTH.
9.10	9.20	9.26	9.47
10.20	10.32	10.39	11.0
10.50	11.2	11.9	11.30
11.20	11.32	11.39	12.0
12.20	12.32	12.39	1.0
12.50	1.2	1.9	1.30
1.20	1.32	1.39	2.0

TRAINS TO LONDON.

ISLEWORTH.	PUTNEY.	CLAPHAM JUNCTION.	WATERLOO.
4.26	4.46	4.52	5.3
4.58	5.18	5.24	5.35
5.26	5.46	5.52	6.3
6.3	6.23	—	6.37
6.26	6.46	6.52	7.3
6.58	7.18	7.24	7.35

Trains to and from London (District Railway).

An 8 minute service of fast trains run between Osterley Park Station, and all stations on the District Railway.

N.B.—It is anticipated the new service of Electric trains to and from Isleworth will be in operation, and if so, the above time table must be used in conjunction with the time table for this service, which will be as follows :—

FROM WATERLOO.	ARRIVING AT ISLEWORTH
At 22 and 52 minutes past each hour.	At 54 and 24 minutes past each hour.
FROM ISLEWORTH.	ARRIVING AT WATERLOO.
At 35 and 5 minutes past each hour.	At 8 and 38 minutes past each hour.