

M0003210: Inside view of a clothing factory / M0003210EB: "Double washing-trough with spray faucets"

Publication/Creation

02 November 1932

Persistent URL

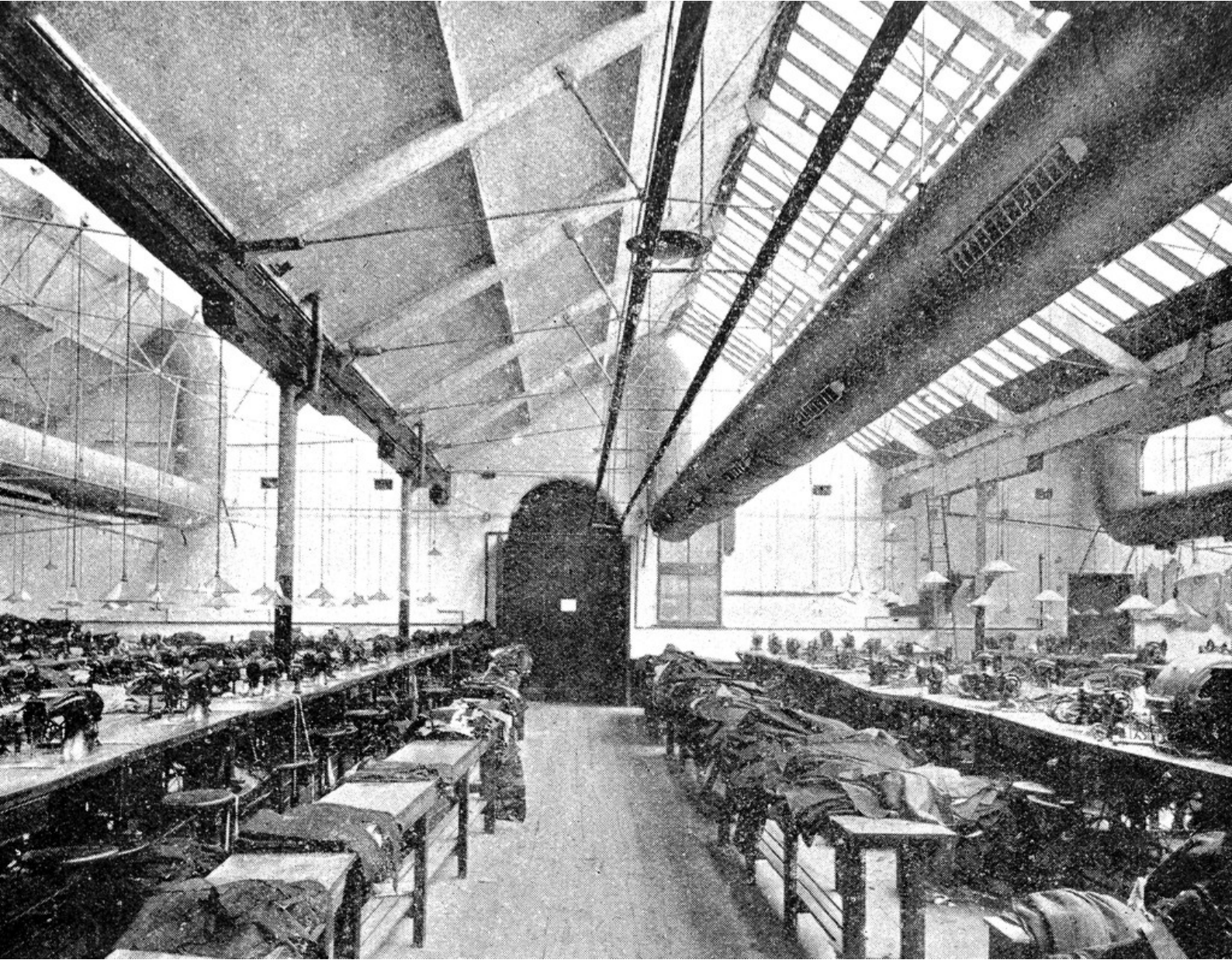
<https://wellcomecollection.org/works/yyhrf4uu>

License and attribution

Conditions of use: it is possible this item is protected by copyright and/or related rights. You are free to use this item in any way that is permitted by the copyright and related rights legislation that applies to your use. For other uses you need to obtain permission from the rights-holder(s).



Wellcome Collection
183 Euston Road
London NW1 2BE UK
T +44 (0)20 7611 8722
E library@wellcomecollection.org
<https://wellcomecollection.org>



artificially humidified, as for example wet-spinning rooms, the provision of cloak-rooms where the workers can change

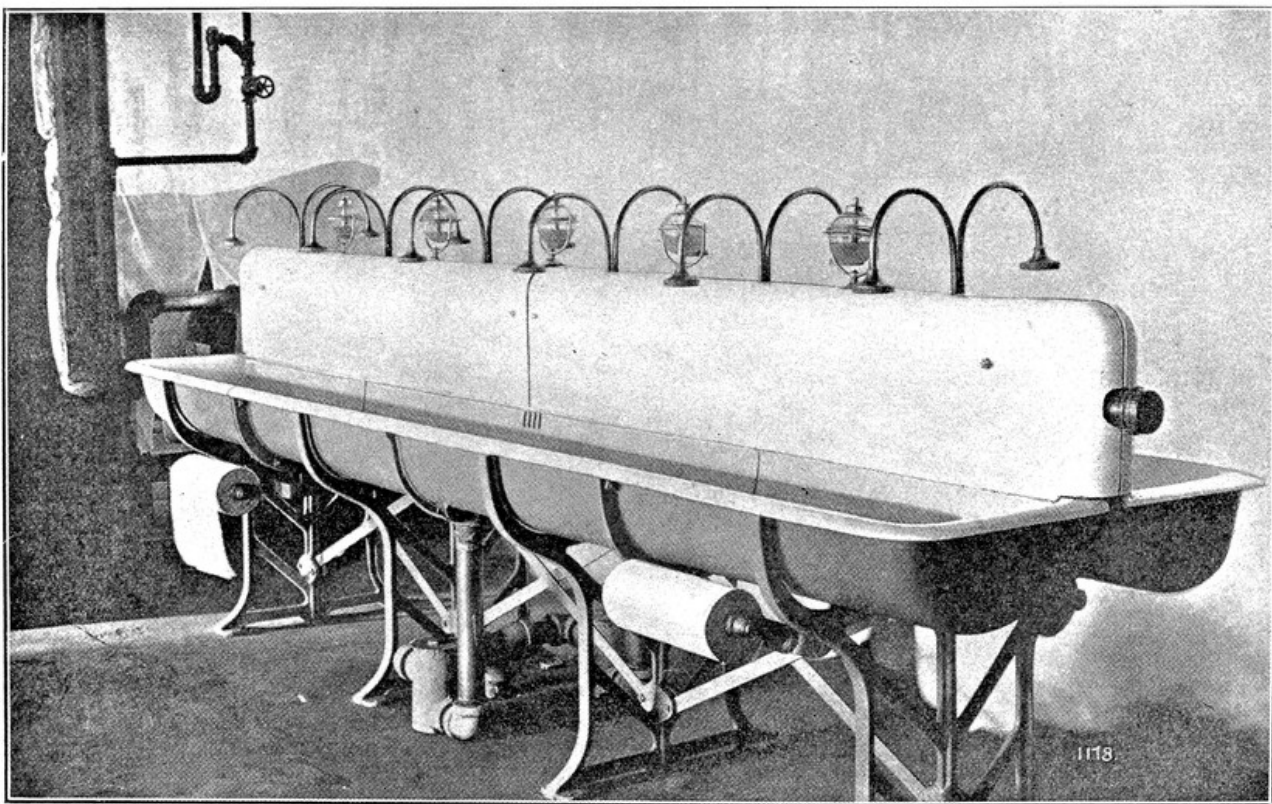


FIG. 12.—Double washing-trough with spray faucets ; automatic control on hot-water supply pipe ; no stopper ; liquid soap and paper towels. (After U.S. Department of Labour.)

from their wet clothing is compulsory ; it is laid down that these should be ventilated and kept at a suitable temperature.