

M0003211: Aerial view of cotton mills in Preston / M0003211EB: "A Typical Manufacturing Town"

Publication/Creation

02 November 1932

Persistent URL

<https://wellcomecollection.org/works/sgpunqvz>

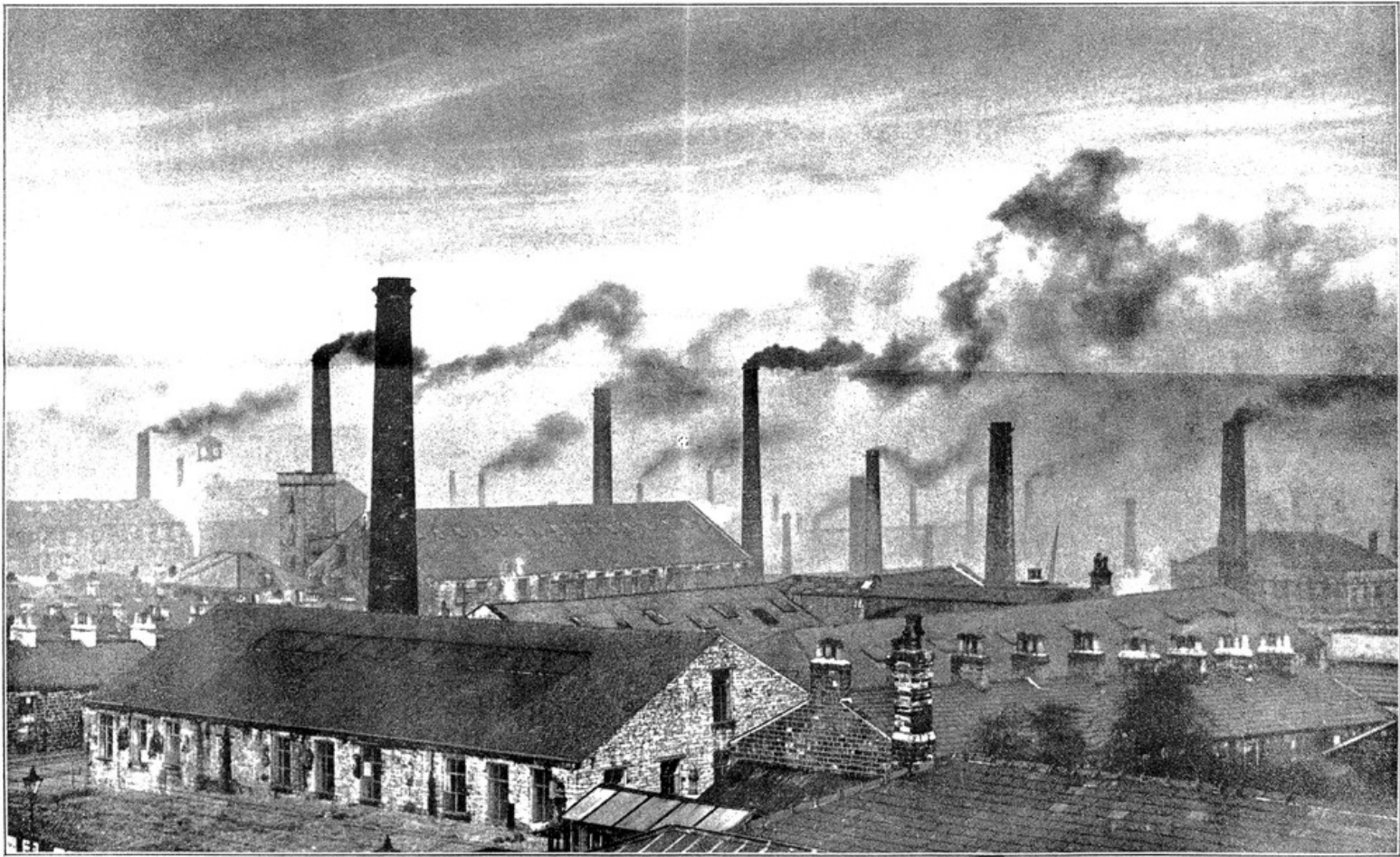
License and attribution

Conditions of use: it is possible this item is protected by copyright and/or related rights. You are free to use this item in any way that is permitted by the copyright and related rights legislation that applies to your use. For other uses you need to obtain permission from the rights-holder(s).



Wellcome Collection
183 Euston Road
London NW1 2BE UK
T +44 (0)20 7611 8722
E library@wellcomecollection.org
<https://wellcomecollection.org>

BRITISH INDUSTRIES : THE COTTON MILLS OF LANCASHIRE





[Aerofilms, Ltd.]

A TYPICAL MANUFACTURING TOWN

An aerial view of Preston with its factories and rows of workers' houses—a striking illustration of the overcrowding which has followed the Industrial Revolution. Contrast the modern garden city, shown on page 1489.