

M0003206: Female worker operating a rag cutting machine with multiple spindles / M0003206EA: View of workers in a rag cutting room in a paper mill

Publication/Creation

02 November 1932

Persistent URL

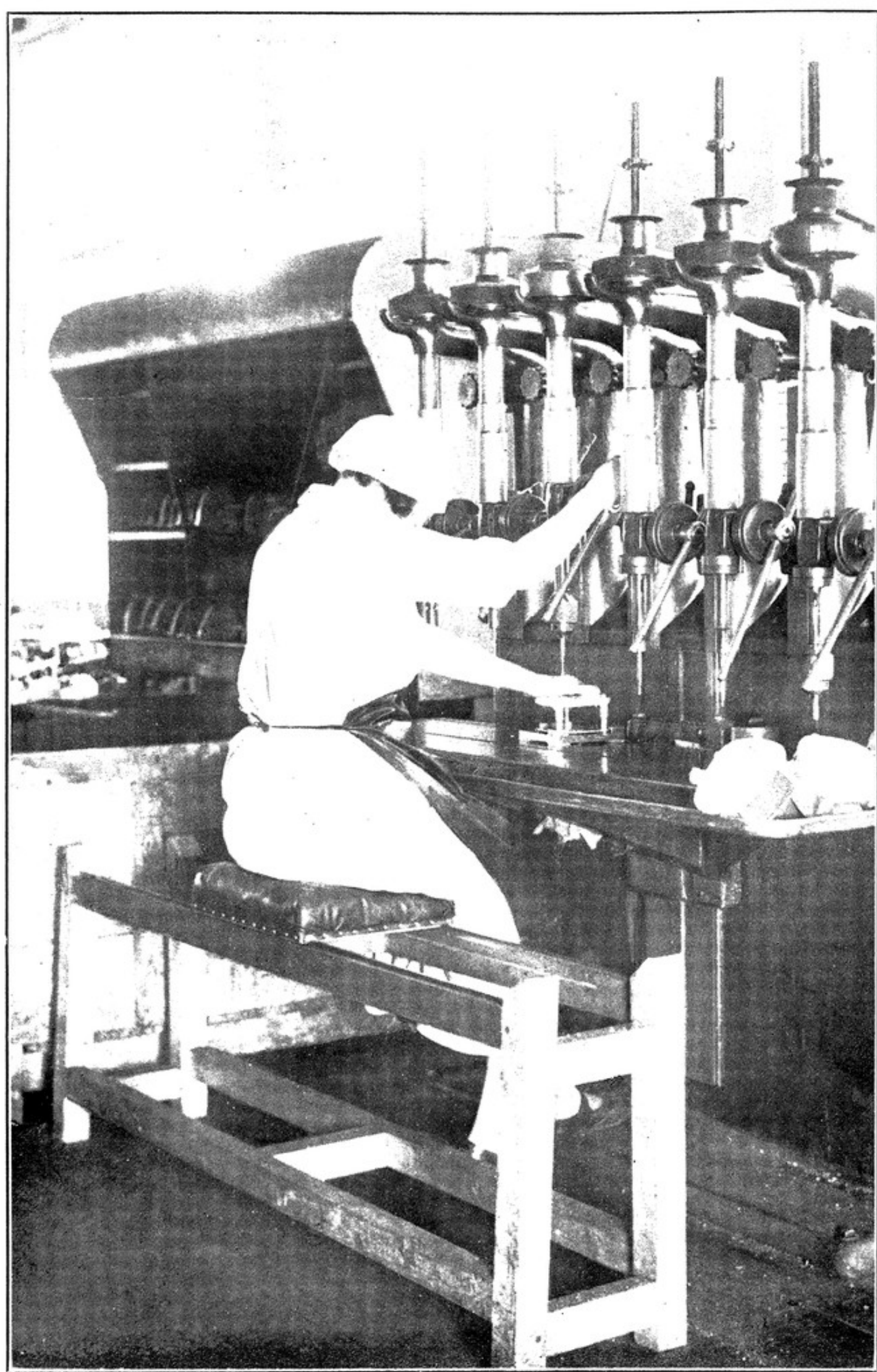
<https://wellcomecollection.org/works/bkxw9quc>

License and attribution

Conditions of use: it is possible this item is protected by copyright and/or related rights. You are free to use this item in any way that is permitted by the copyright and related rights legislation that applies to your use. For other uses you need to obtain permission from the rights-holder(s).



Wellcome Collection
183 Euston Road
London NW1 2BE UK
T +44 (0)20 7611 8722
E library@wellcomecollection.org
<https://wellcomecollection.org>



nature of this operation which gives rise to bronchial catarrh and the danger of anthrax infection have been much reduced by the preventive measures employed (see p. 320).

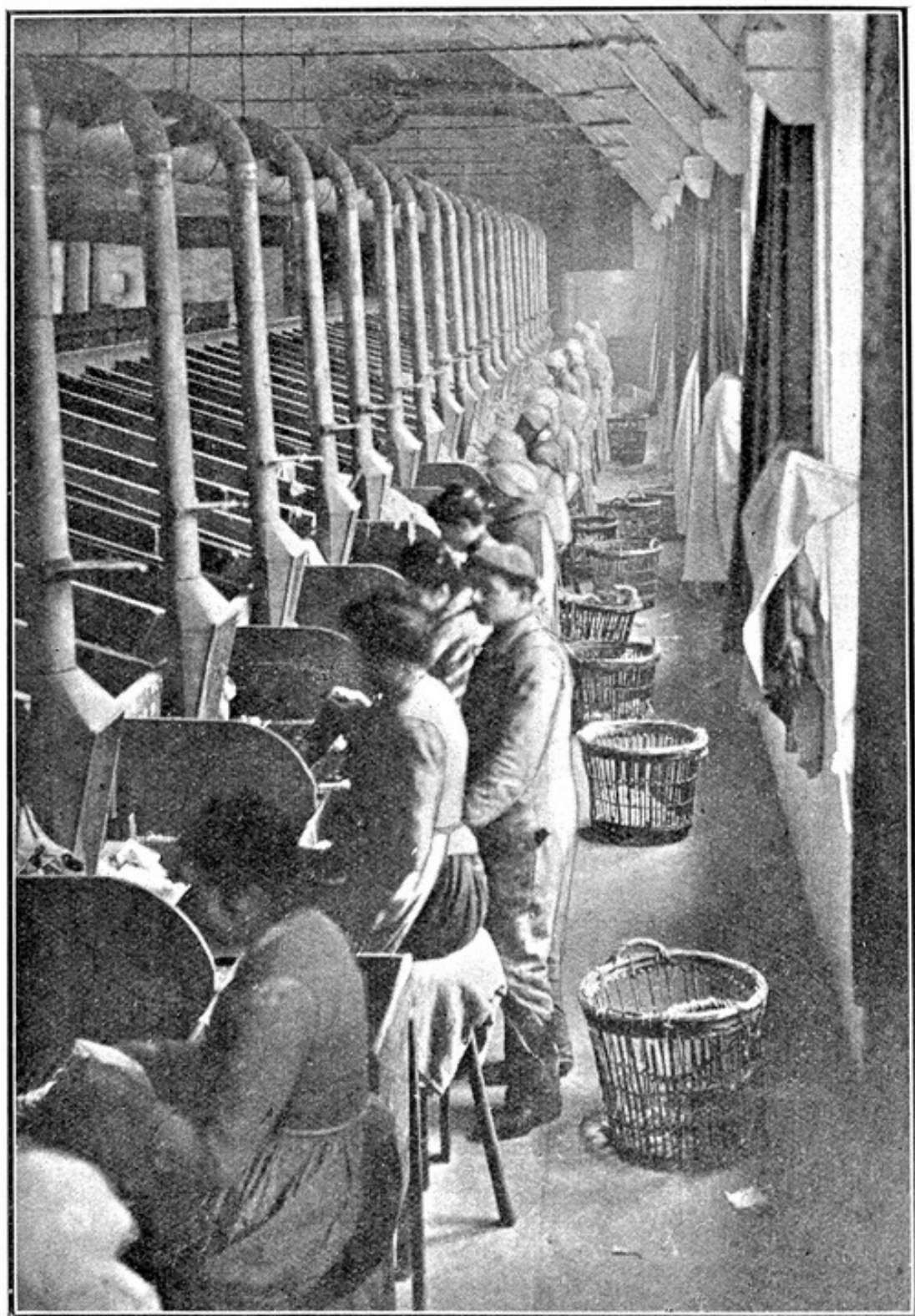


FIG. 43.—A large rag-cutting room in a paper mill. Each operator works directly opposite an exhaust hood, through which the objectionable dust is drawn away as fast as it is created in the process of rag-cutting. (Courtesy of Sturtevant Engineering Co.).