

M0003399: Children showing effects of rickets on physical development and illustrations of the effect of scurvy on joints / M0003399EB: Illustrations of the appearance of scurvy in bones

Publication/Creation

14 March 1933

Persistent URL

<https://wellcomecollection.org/works/t3rrbtsm>

License and attribution

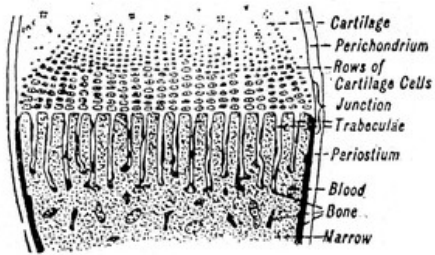
Conditions of use: it is possible this item is protected by copyright and/or related rights. You are free to use this item in any way that is permitted by the copyright and related rights legislation that applies to your use. For other uses you need to obtain permission from the rights-holder(s).



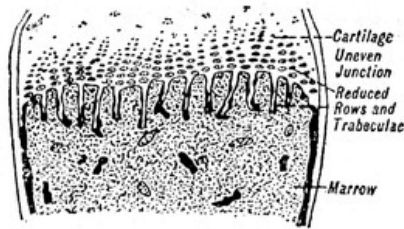
Wellcome Collection
183 Euston Road
London NW1 2BE UK
T +44 (0)20 7611 8722
E library@wellcomecollection.org
<https://wellcomecollection.org>



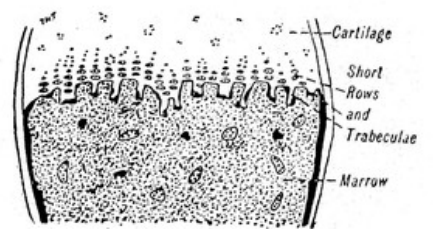
Z



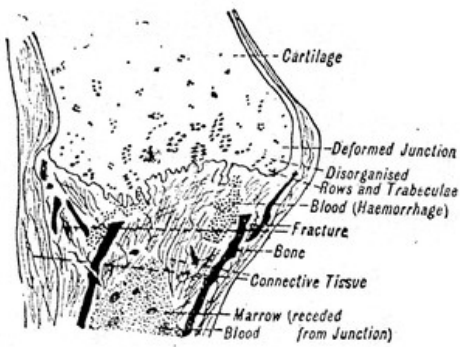
i. Normal Rib Junction.



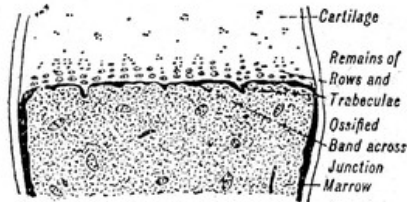
ii. Nearly Normal Rib Junction.
'Incipient Scurvy.'



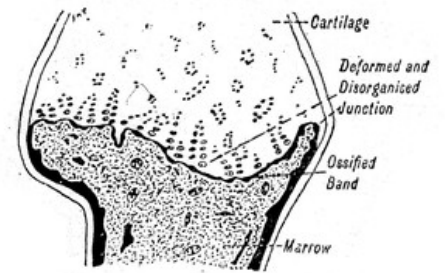
iii. 'Definite Scurvy.'



iv. 'Acute Scurvy.'



v. 'Chronic Scurvy' (definite).



vi. 'Chronic Scurvy' (acute).

FIG. 31.¹

¹ Reproduced by permission from the *Biochemical Journal*, 1918, 12, p. 446.