

**M0003413: "A cause of mill fever" / M0003413EB: "Guarding against  
"Bakers' Itch"**

**Publication/Creation**

14 March 1933

**Persistent URL**

<https://wellcomecollection.org/works/u9hfpxyf>

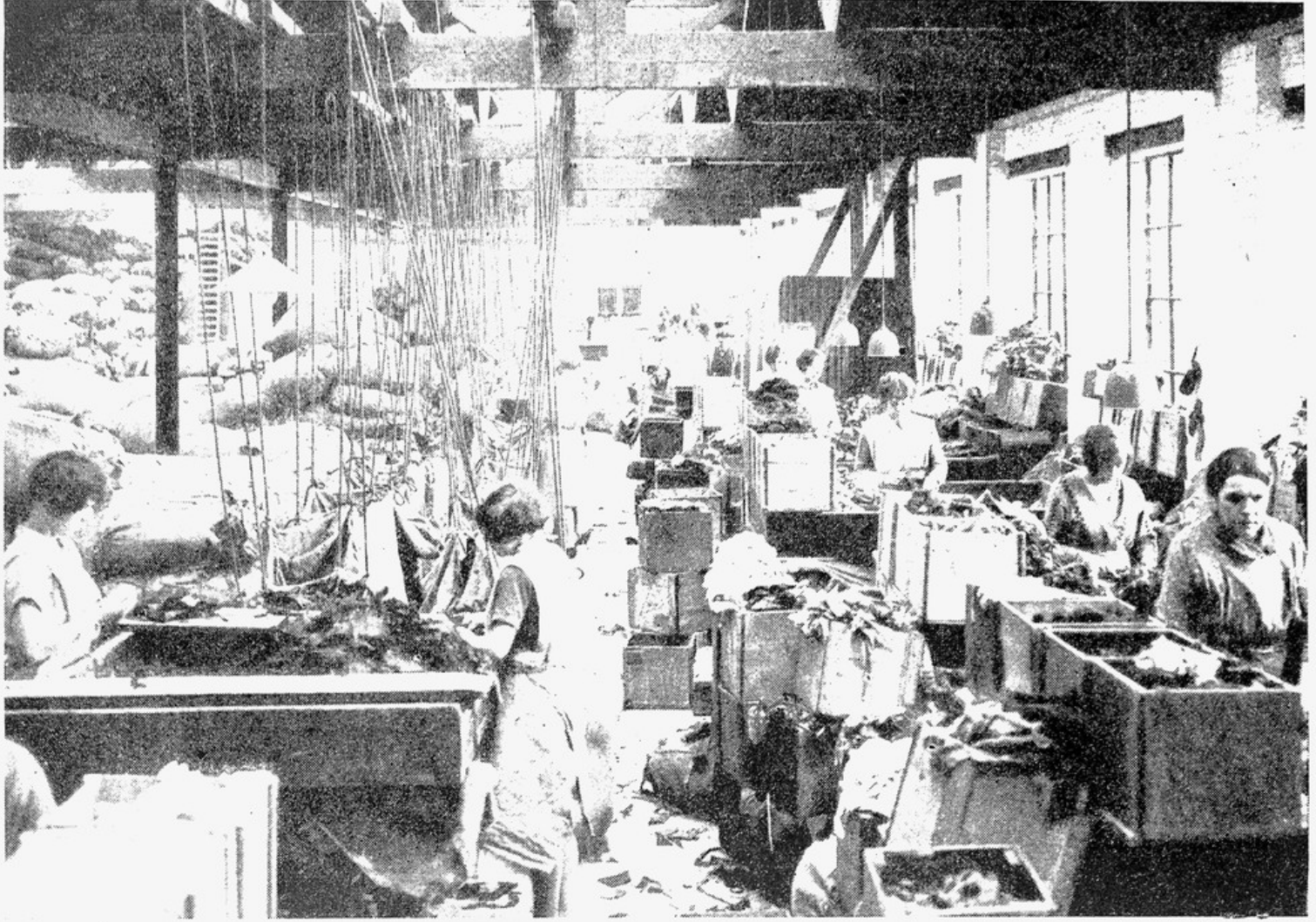
**License and attribution**

Conditions of use: it is possible this item is protected by copyright and/or related rights. You are free to use this item in any way that is permitted by the copyright and related rights legislation that applies to your use. For other uses you need to obtain permission from the rights-holder(s).

**wellcome  
collection**

Wellcome Collection  
183 Euston Road  
London NW1 2BE UK  
T +44 (0)20 7611 8722  
E [library@wellcomecollection.org](mailto:library@wellcomecollection.org)  
<https://wellcomecollection.org>

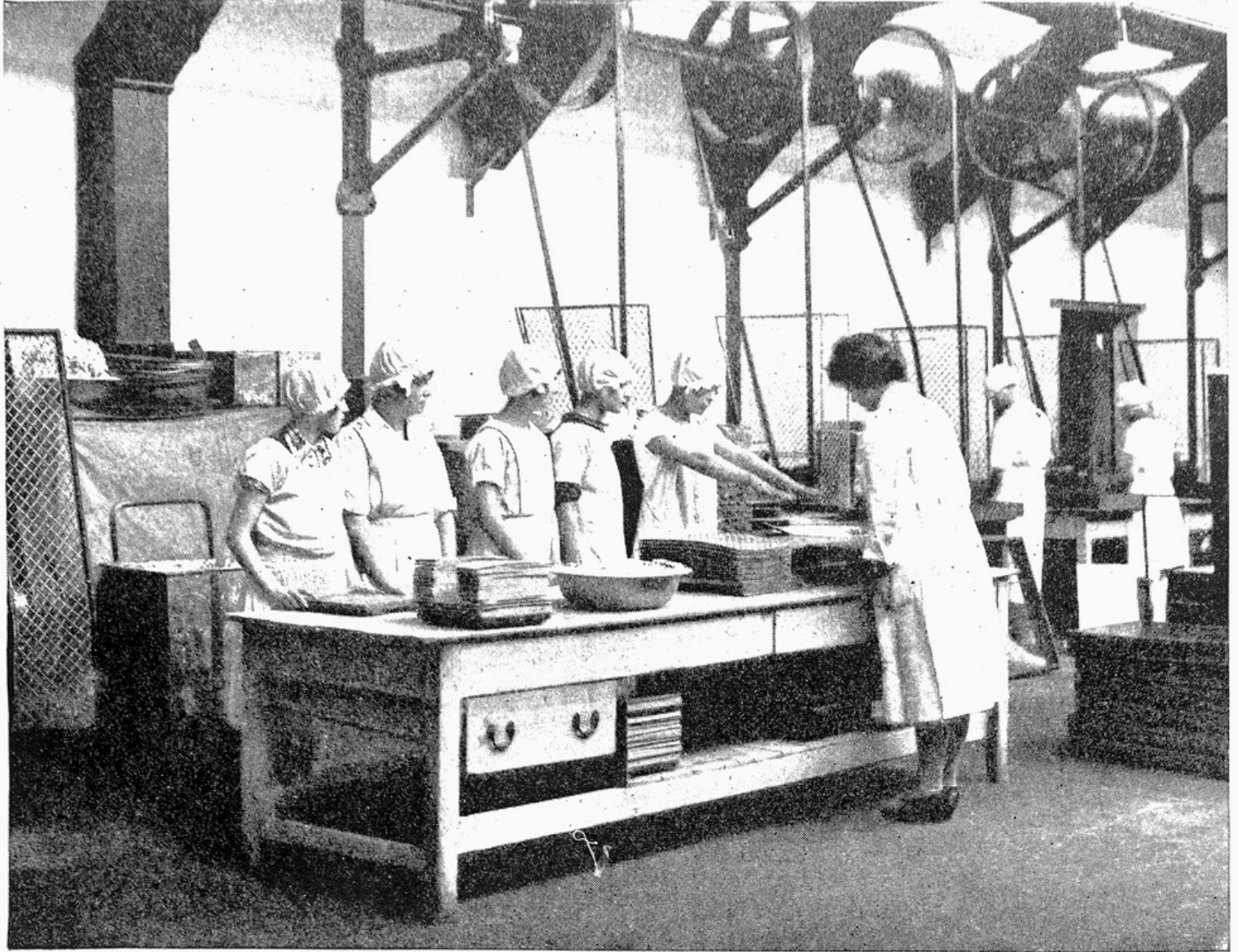
## THE GOLDEN HEALTH LIBRARY



[Photopress

### A CAUSE OF MILL FEVER

Workers who sort and clean rags for the manufacture of paper sometimes develop "mill fever," a condition with symptoms of hay fever.



*Courtesy]*

### GUARDING AGAINST "BAKERS' ITCH"

*[McVitie & Price, Ltd.]*

A doctor examining the hands and arms of workers in a biscuit factory for signs of eczema produced by prolonged contact with some of the ingredients.