

**M0002800: Pedigree chart representing a hereditary early decay of teeth /
M0002800EB: Diagram showing "Pedigree of Haemophilia"**

Publication/Creation

28 January 1932

Persistent URL

<https://wellcomecollection.org/works/nxmhj5gd>

License and attribution

Conditions of use: it is possible this item is protected by copyright and/or related rights. You are free to use this item in any way that is permitted by the copyright and related rights legislation that applies to your use. For other uses you need to obtain permission from the rights-holder(s).



Wellcome Collection
183 Euston Road
London NW1 2BE UK
T +44 (0)20 7611 8722
E library@wellcomecollection.org
<https://wellcomecollection.org>

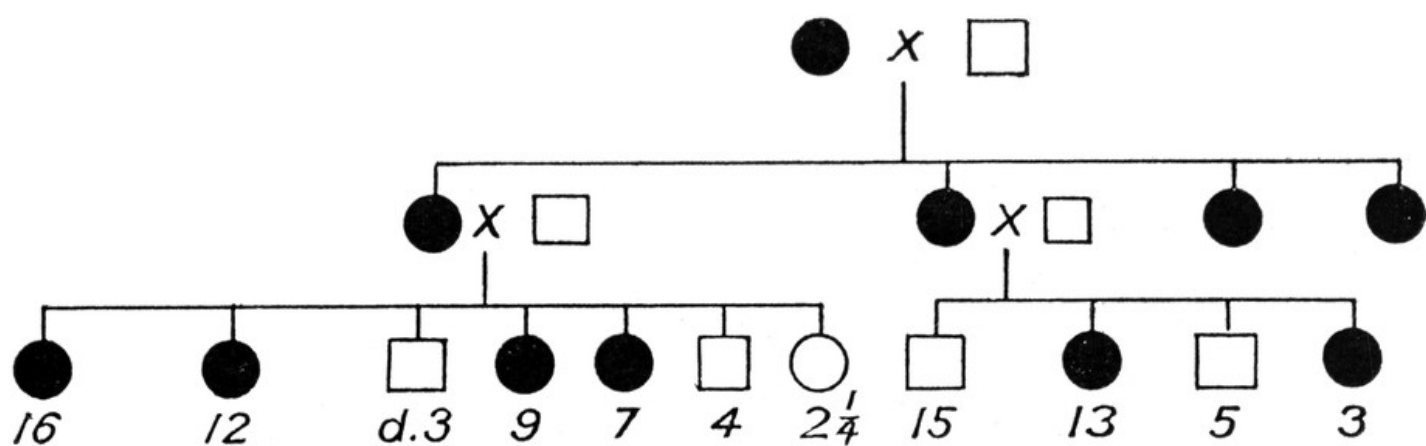


FIG. 68.—FAMILY SHOWING EARLY DECAY OF TEETH. THE NUMBERS BENEATH ARE THE RESPECTIVE AGES OF THE CHILDREN.

Eight generations descended from the marriage of a Quaker woman named Jasper to Sir William Crispin in 1746 contain

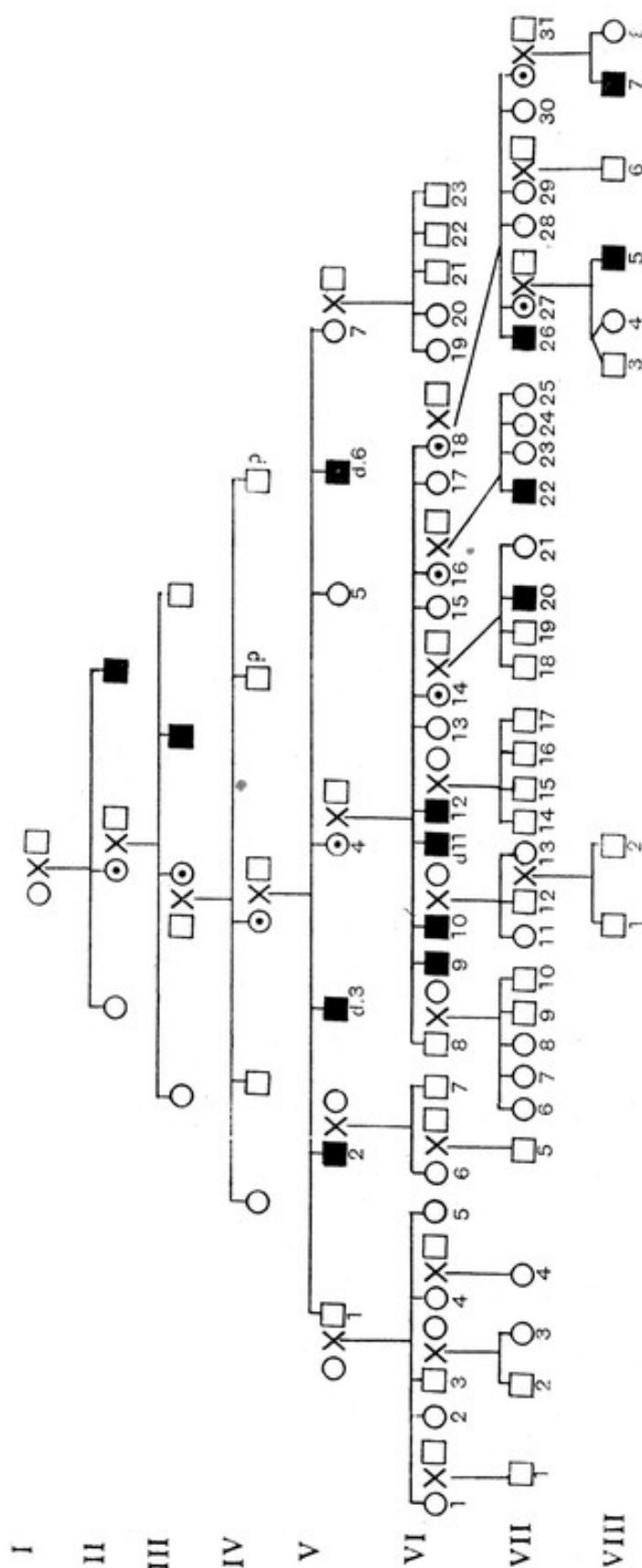


FIG. 59.—PEDIGREE OF HÆMOPHILIA. (After Davidson and McQuarrie.)

14 cases (Fig. 59). It has been handed down through normal female carriers for at least six generations to VIII. 3. Number