

M0001909EA: Reproduction of a map of the London Fever Hospital, Liverpool Road, London and houses in the surrounding area, which have been coded to represent those in which scarlet fever has occurred / M0001909EB: Reproduction of the complete plan and elevation of a "proposed Isolation Hospital, Tuberculosis Pavilion" for the County Borough of Southport

Publication/Creation

May 1931

Persistent URL

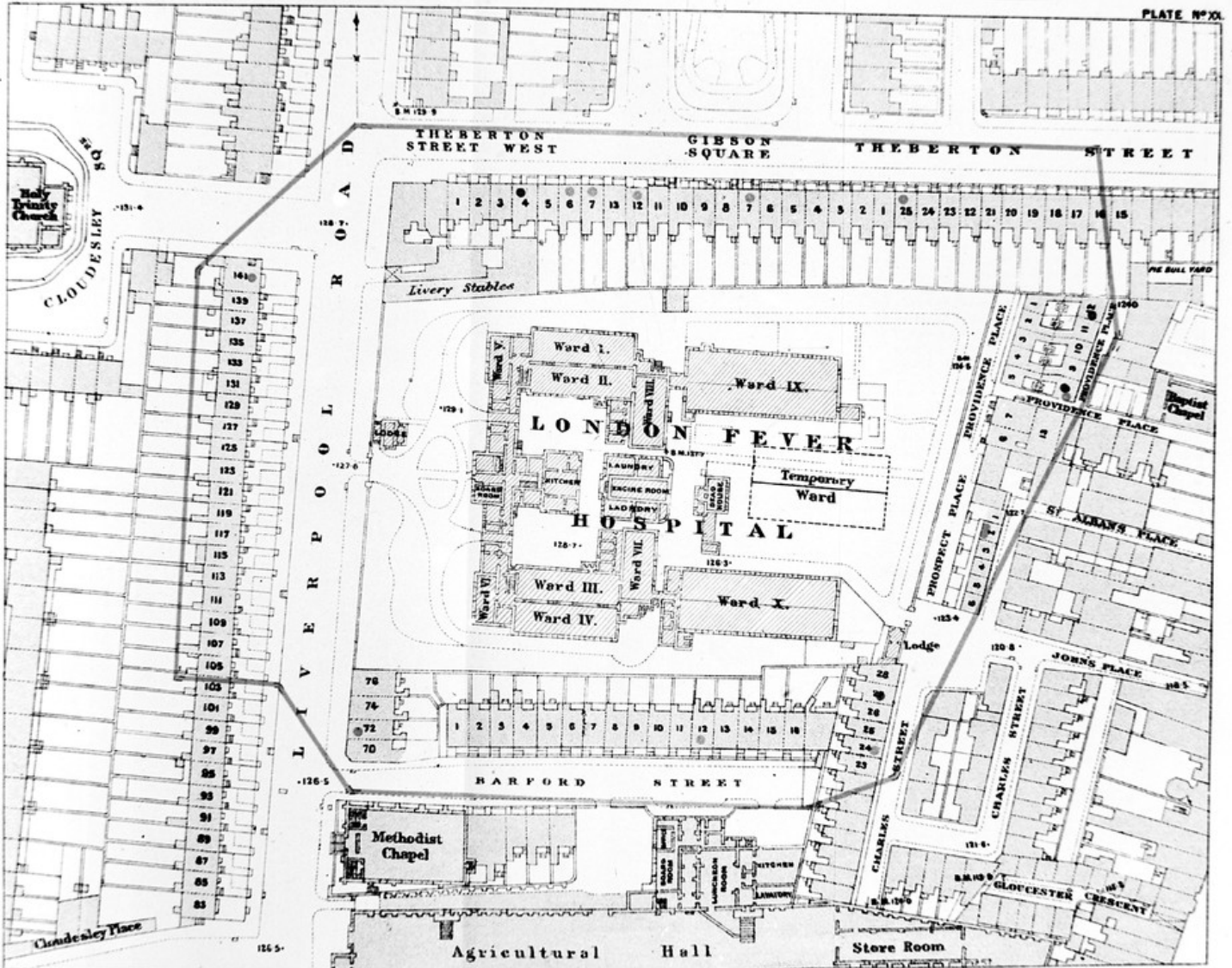
<https://wellcomecollection.org/works/axvrbzgw>

License and attribution

Conditions of use: it is possible this item is protected by copyright and/or related rights. You are free to use this item in any way that is permitted by the copyright and related rights legislation that applies to your use. For other uses you need to obtain permission from the rights-holder(s).



Wellcome Collection
183 Euston Road
London NW1 2BE UK
T +44 (0)20 7611 8722
E library@wellcomecollection.org
<https://wellcomecollection.org>



● Houses in which scarlet fever has occurred (inclusive of doubtful cases)
 ○ Houses in which enteric fever has occurred (doubtful cases)
 The Dotted line encloses the houses included in the enquiry.

Scale Five Feet to One Statute Mile or 25 Feet to One Inch.

Judd & Co. Ltd. Lith. 63, Carter Lane.

COUNTY BOROUGH OF SOUTHPORT
 Proposed Isolation Hospital Tuberculous Section

Drawing No. 8

33



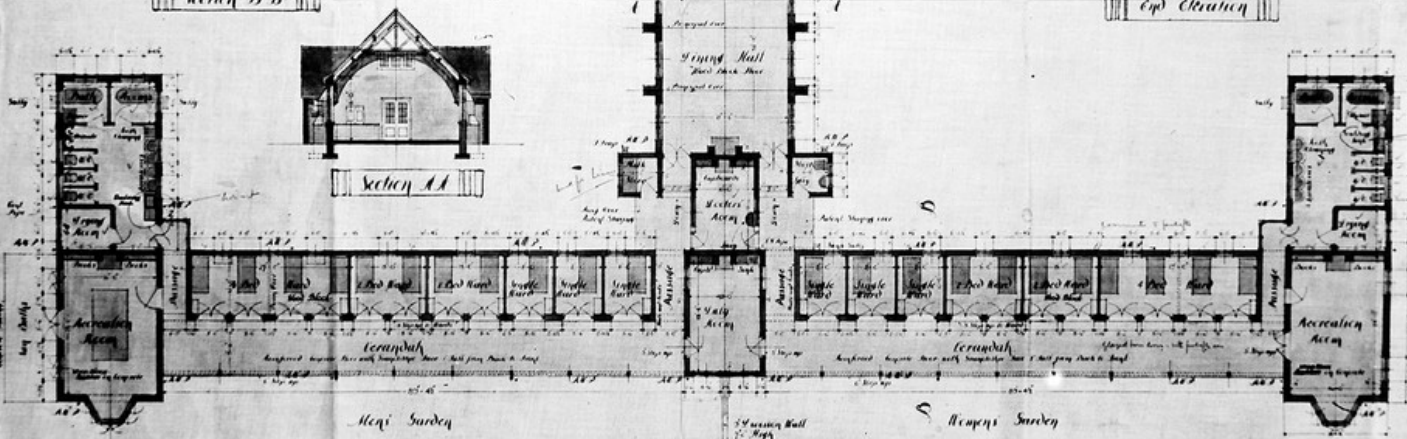
East Elevation



Section D B



West Elevation



Men's Garden

Women's Garden

Ground Floor Plan

J.C. Buckley, M. Archt. CC
 Design, Liverpool
 Aug. Hall, Liverpool.

Scale 1/4" = 1' 0"