

M0001910: Reproduction of an incomplete plan and elevation of a proposed Isolation Hospital, Tuberculosis Pavilion for the County Borough of Southport, with the cross-section and end elevation covered/removed

Publication/Creation

May 1931

Persistent URL

<https://wellcomecollection.org/works/xsyen7y3>

License and attribution

Conditions of use: it is possible this item is protected by copyright and/or related rights. You are free to use this item in any way that is permitted by the copyright and related rights legislation that applies to your use. For other uses you need to obtain permission from the rights-holder(s).



Wellcome Collection
183 Euston Road
London NW1 2BE UK
T +44 (0)20 7611 8722
E library@wellcomecollection.org
<https://wellcomecollection.org>

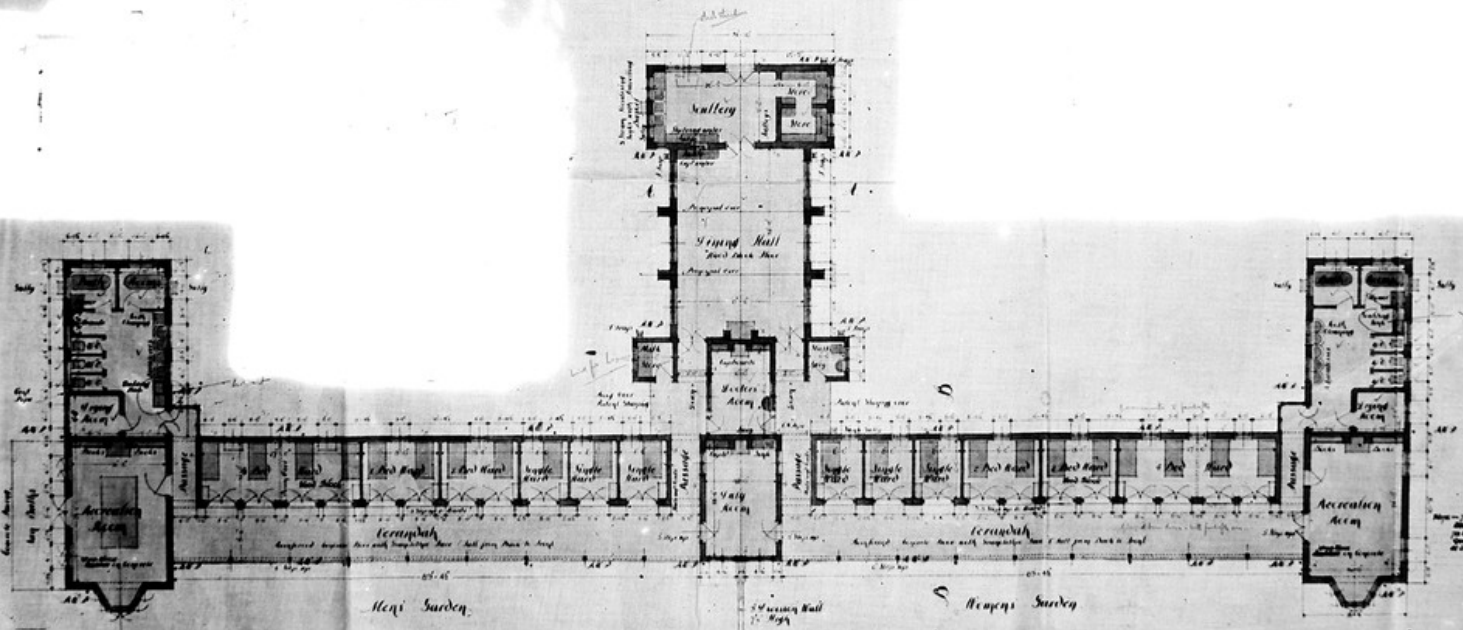
COUNTY BOROUGH OF SOUTHPORT
 Proposed Isolation Hospital Tuberculous Patients

Drawing No. 8.

MINISTER OF HEALTH
 A-4-7-1907
 No. 3



South Elevation



Group Floor Plan

10 Southey St. Spt. 00
 Design, Engineer
 Arch. Hall, Architect.