

M0001120: Gibraltar Skull discovered in 1848

Publication/Creation

14 August 1930

Persistent URL

<https://wellcomecollection.org/works/gqkaccfy>

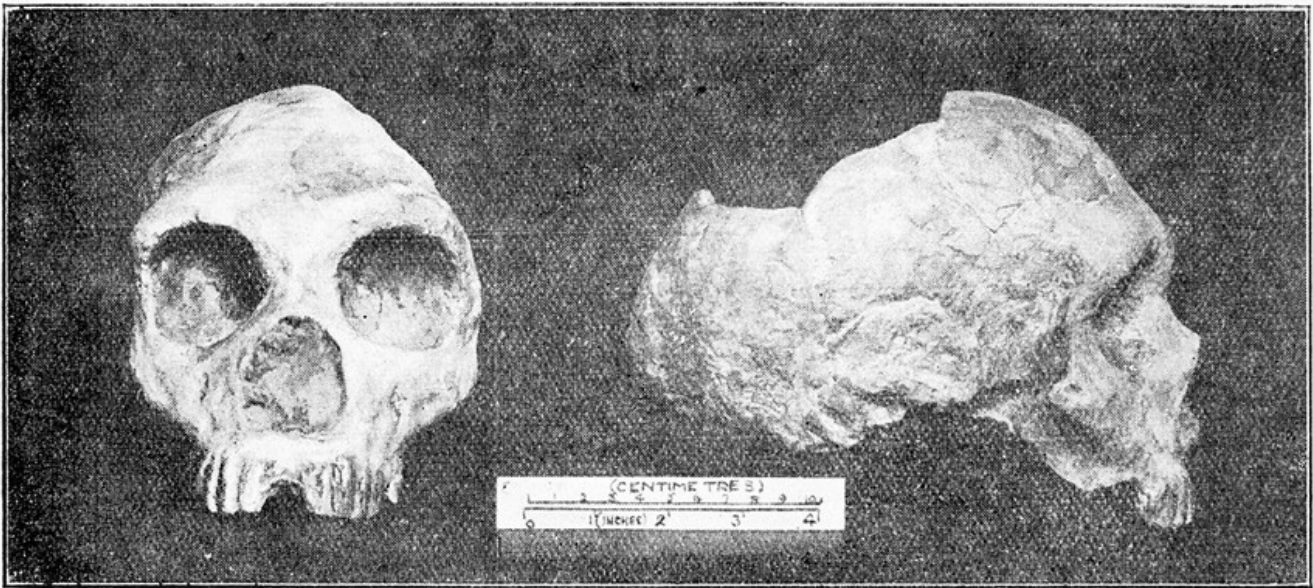
License and attribution

Conditions of use: it is possible this item is protected by copyright and/or related rights. You are free to use this item in any way that is permitted by the copyright and related rights legislation that applies to your use. For other uses you need to obtain permission from the rights-holder(s).



Wellcome Collection
183 Euston Road
London NW1 2BE UK
T +44 (0)20 7611 8722
E library@wellcomecollection.org
<https://wellcomecollection.org>

The Gibraltar Skull.



Front and Profile Views of the Gibraltar Skull, figured and described by Quatrefagès and Hamy in "Crania Ethnica," 1882, page 21, figs. 18-19; also by Prof. W. J. Sollas in "Phil. Trans.," vol. 199, B (1907), pl. 29.

The famous Gibraltar Skull, illustrated above, has a place of unique interest in the history of Anthropological Research. Discovered in 1848, during quarrying operations in a brecciated talus on the north front of the Rock of Gibraltar, it was the **first example of Neanderthal Man to be brought to light**, although it was not publicly exhibited until the meeting of the Anthropological Congress at Norwich in 1868. It was in that year presented to the Museum of the Royal College of Surgeons of England, by whose kind per-