

## **M0001209: Drawing of type specimen of *Micrerpeton caudatum***

### **Publication/Creation**

18 August 1930

### **Persistent URL**

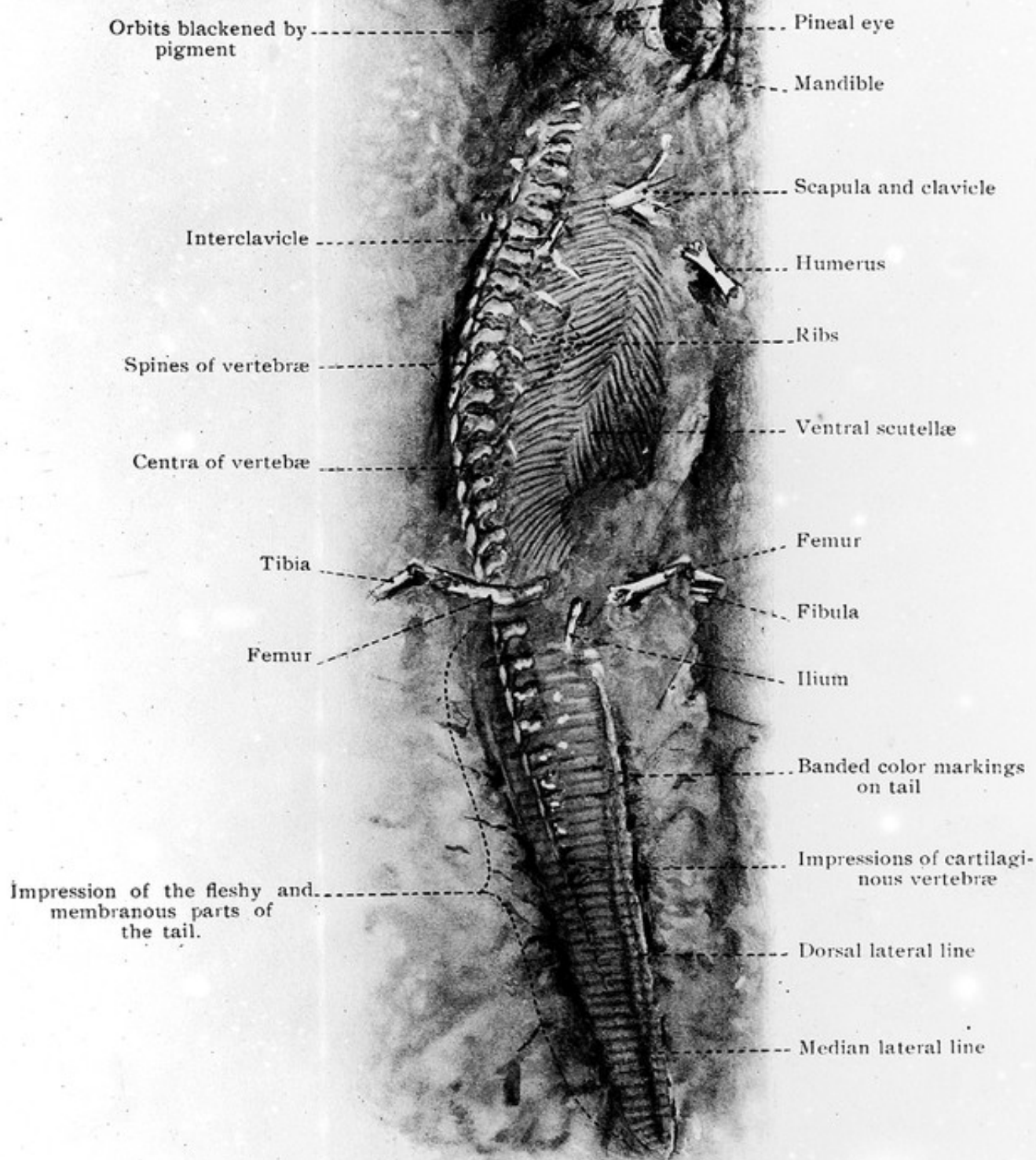
<https://wellcomecollection.org/works/svpkg5bp>

### **License and attribution**

Conditions of use: it is possible this item is protected by copyright and/or related rights. You are free to use this item in any way that is permitted by the copyright and related rights legislation that applies to your use. For other uses you need to obtain permission from the rights-holder(s).



Wellcome Collection  
183 Euston Road  
London NW1 2BE UK  
T +44 (0)20 7611 8722  
E [library@wellcomecollection.org](mailto:library@wellcomecollection.org)  
<https://wellcomecollection.org>



Drawing  $\times 3.5$ . of type specimen of *Micrerpeton caudatum* Moodie, from the Coal Measures of Mazon Creek, Illinois, showing skeletal elements, form of head and tail, the lateral-line sense organs, banded color-markings, and ventral scutellæ. On the edges of the tail impression are indications that in life the tail had a thin fold of skin above and below the fleshy portion, much as in the larvæ of *Amblystoma* at the present day.