

M0001119: Galley Hill skull found in 1888 at Northfleet, Kent

Publication/Creation

14 August 1930

Persistent URL

<https://wellcomecollection.org/works/zzm5fdh7>

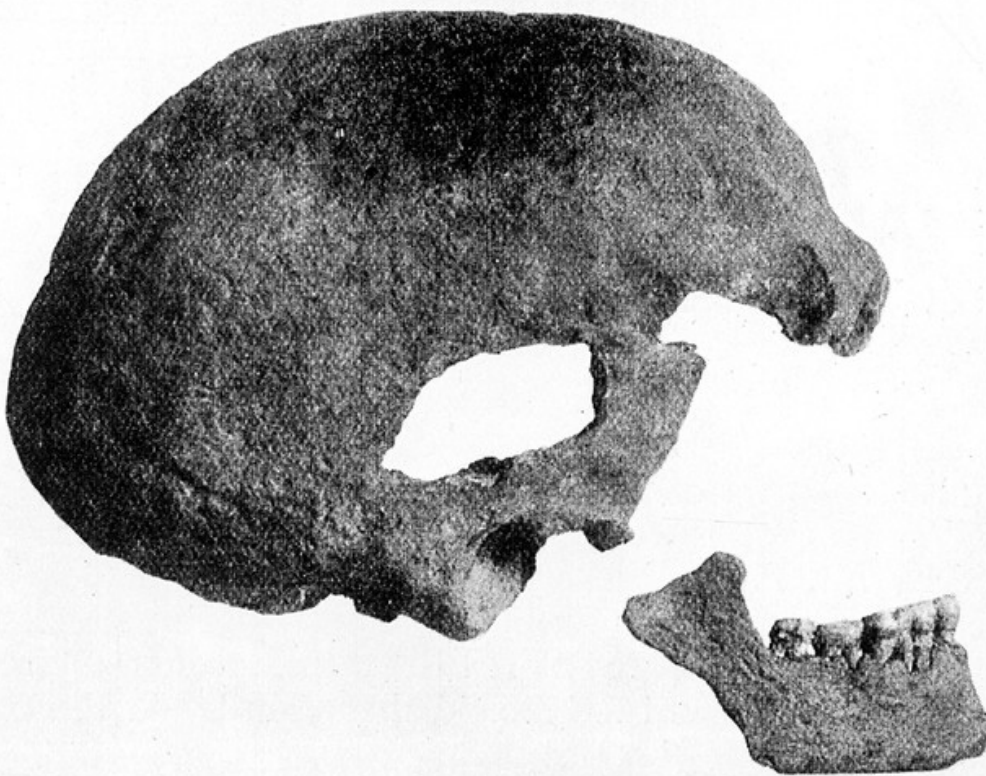
License and attribution

Conditions of use: it is possible this item is protected by copyright and/or related rights. You are free to use this item in any way that is permitted by the copyright and related rights legislation that applies to your use. For other uses you need to obtain permission from the rights-holder(s).



Wellcome Collection
183 Euston Road
London NW1 2BE UK
T +44 (0)20 7611 8722
E library@wellcomecollection.org
<https://wellcomecollection.org>

Galley Hill Skull.



(Offered by kind permission of the owner, Dr. Frank Corner.)

The skull was found in 1888 in a palæolithic gravel deposit, 90 feet above the present Thames level, at Galley Hill, Northfleet, Kent. From the time of the first description of the discovery by Mr. E. T. Newton in 1894, the Galley Hill Man has been the theme of contentious debate among anthropologists. For a judicious résumé of the evidence connected with the finding of the bones, see Sir A. Keith's "The Antiquity of Man."

"For my part, when I commenced a systematic examination of these