

## **M0001173: Fossils and bones: framed display board**

### **Publication/Creation**

15 August 1930

### **Persistent URL**

<https://wellcomecollection.org/works/vwppu6ms>

### **License and attribution**

Conditions of use: it is possible this item is protected by copyright and/or related rights. You are free to use this item in any way that is permitted by the copyright and related rights legislation that applies to your use. For other uses you need to obtain permission from the rights-holder(s).



Wellcome Collection  
183 Euston Road  
London NW1 2BE UK  
T +44 (0)20 7611 8722  
E [library@wellcomecollection.org](mailto:library@wellcomecollection.org)  
<https://wellcomecollection.org>

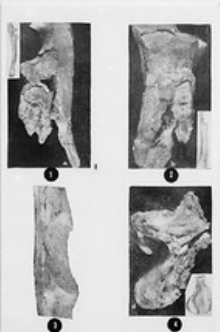


**FABRICIUS OF A TOOTHED BEAST**

The view of the middle of a three-toothed tooth, *Microtherium*, *Microtherium*, from the jawbone, about 1.5 million years old. The figure above is the normal condition and the figure below is the condition of a tooth possibly representing the presence of arthropods in its early stages.



1. Section (longitudinal section) of tooth's root (crown) showing pulp chamber and dentine structure.
2. Section of a tooth from the jawbone, showing its position in the jawbone and the structure of dental tissue. There are the impressions of arthropods on the front of the tooth.



**FRAGMENTS OF TOOTH**

1. and 2. Section and view of tooth, a large mammalian tooth, about 1.5 million years old. The tooth is the same. Part of which has been in the jawbone, the other part of which has been in the jawbone with the pulp chamber, and part of which has been in the jawbone with the pulp chamber. The pulp chamber is the same as the pulp chamber of the tooth.
3. Section of tooth showing, preserved in the jawbone and being 1.5 million years old.
4. Section of tooth showing, preserved in the jawbone and being 1.5 million years old. The tooth is the same. Part of which has been in the jawbone, the other part of which has been in the jawbone with the pulp chamber, and part of which has been in the jawbone with the pulp chamber. The pulp chamber is the same as the pulp chamber of the tooth.



**TOOTH OF AN EARLY BEAST**

Lower side of the teeth of *Microtherium*, with traces of the pulp chamber, in an early specimen, nearly 1.5 million years old. The tooth shows considerable wear and tear, from being preserved in the jawbone and being in contact with other teeth in the jawbone.



1. Right middle of tooth, a small mammalian tooth, about 1.5 million years old. The tooth is the same. Part of which has been in the jawbone, the other part of which has been in the jawbone with the pulp chamber, and part of which has been in the jawbone with the pulp chamber. The pulp chamber is the same as the pulp chamber of the tooth.
2. Lower part of tooth of *Microtherium*, a small mammalian tooth, about 1.5 million years old. The tooth is the same. Part of which has been in the jawbone, the other part of which has been in the jawbone with the pulp chamber, and part of which has been in the jawbone with the pulp chamber. The pulp chamber is the same as the pulp chamber of the tooth.



**TOOTH OF AN EARLY BEAST**

1. Right middle of tooth, a small mammalian tooth, about 1.5 million years old. The tooth is the same. Part of which has been in the jawbone, the other part of which has been in the jawbone with the pulp chamber, and part of which has been in the jawbone with the pulp chamber. The pulp chamber is the same as the pulp chamber of the tooth.
2. Lower part of tooth of *Microtherium*, a small mammalian tooth, about 1.5 million years old. The tooth is the same. Part of which has been in the jawbone, the other part of which has been in the jawbone with the pulp chamber, and part of which has been in the jawbone with the pulp chamber. The pulp chamber is the same as the pulp chamber of the tooth.



The skeleton of an early tertiary mammal, *Microtherium*, about 1.5 million years old. The fifth rib on the right side has been preserved and the fourth rib on the left side has been preserved. The detail of the fifth rib shows the straight shape in the lower right hand corner, the fourth rib is the same.