

## **M0001179: symbiosis: framed display board**

### **Publication/Creation**

15 August 1930

### **Persistent URL**

<https://wellcomecollection.org/works/z77vpfpg>

### **License and attribution**

Conditions of use: it is possible this item is protected by copyright and/or related rights. You are free to use this item in any way that is permitted by the copyright and related rights legislation that applies to your use. For other uses you need to obtain permission from the rights-holder(s).



Wellcome Collection  
183 Euston Road  
London NW1 2BE UK  
T +44 (0)20 7611 8722  
E [library@wellcomecollection.org](mailto:library@wellcomecollection.org)  
<https://wellcomecollection.org>

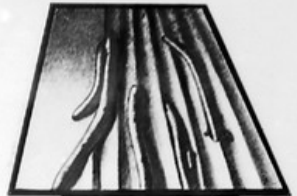
SYMBIOSIS



*Cephalopoda opuscula* (Dy.), a cephalopod having a small gastropod (*Strophostoma*) attached and covering the aperture of the siphon.



Limulites (*Flux*) grows along base of siphon in a shell of *Pterinea* (see also General Biology).



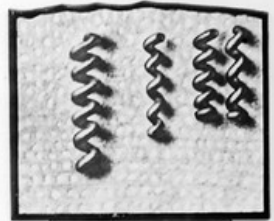
Limulites in a valve of siphon.



Clavate surface (limulites) in a valve of *Leptostrophia*.



A series of clavate tubes (limulites) in the shell substance of *Leptostrophia* (*Strophostoma*) all starting from the angle of the valve at a definite period of growth in the shell.



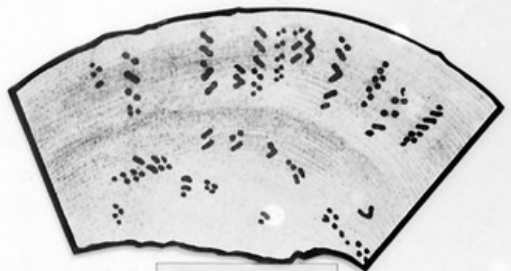
Enlarged restoration of spiral tubes (*Strophostoma*).



Part of the weathered surface of a siphon, showing the openings of the worm tubes (*Strophostoma*) also in section.



A section of siphon showing worm tubes of siphon alveoli.



Section of spiral tubes (*Strophostoma*) in a siphon of siphon.