

M0001175: Prehistoric pathology: framed display board

Publication/Creation

15 August 1930

Persistent URL

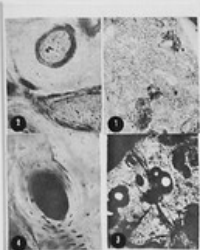
<https://wellcomecollection.org/works/ek3mkttp>

License and attribution

Conditions of use: it is possible this item is protected by copyright and/or related rights. You are free to use this item in any way that is permitted by the copyright and related rights legislation that applies to your use. For other uses you need to obtain permission from the rights-holder(s).

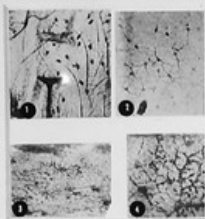


Wellcome Collection
183 Euston Road
London NW1 2BE UK
T +44 (0)20 7611 8722
E library@wellcomecollection.org
<https://wellcomecollection.org>



HISTOLOGY OF HUMAN PLACENTA SHOWING INTERVILLUS SPACES. 20X.

1. Histology of human placenta showing intervillous spaces. 20X.
2. Histology of chorionic plate of a human placenta of term, showing connective tissue, peripheral of chorionic lamellae, spiral, large, muscular arteries. 20X. The tendency to form pseudo-arteries is evident. Peripheral zone is low, covering amniotic membrane. Central zone contains connective tissue.
3. Section of a chorionic plate of a human placenta showing histology of low fetal vessels. 20X.
4. An enlarged view of one of the pseudo-arteries, representing a vascular channel in the same section. 20X.



HISTOLOGY OF A FRAGMENT OF PLACENTAL TISSUE. 20X.

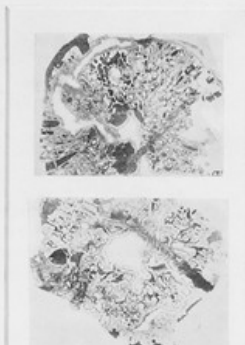
The following figures show four stages in the development of the chorionic lamellae of a human placenta in the normal condition. All figures show connective tissue.

1. The histology of a fragment of placental tissue, showing the normal condition, showing the normal condition of the chorionic lamellae. The connective tissue is well developed.
2. The histology of a fragment of placental tissue, showing the normal condition of the chorionic lamellae. The connective tissue is well developed.
3. A further stage of development of a fragment of placental tissue.
4. The final stage of development of a fragment of placental tissue, showing the normal condition of the chorionic lamellae. The connective tissue is well developed.



THE HUMAN FETUS. 20X.

1. Section of a human fetus, showing the placenta and umbilical cord. The placenta is attached to the uterus. The umbilical cord is shown in cross-section. The fetus is shown in a fetal position.
2. Section of a human fetus, showing the placenta and umbilical cord. The placenta is attached to the uterus. The umbilical cord is shown in cross-section. The fetus is shown in a fetal position.
3. Section of a human fetus, showing the placenta and umbilical cord. The placenta is attached to the uterus. The umbilical cord is shown in cross-section. The fetus is shown in a fetal position.
4. Section of a human fetus, showing the placenta and umbilical cord. The placenta is attached to the uterus. The umbilical cord is shown in cross-section. The fetus is shown in a fetal position.



HUMAN PLACENTA. 20X.

1. Section of a human placenta, showing the normal condition of the chorionic lamellae. The connective tissue is well developed.
2. Section of a human placenta, showing the normal condition of the chorionic lamellae. The connective tissue is well developed.



Histology of a human placenta, showing the normal condition of the chorionic lamellae. The connective tissue is well developed.



HUMAN PLACENTA. 20X.

1. A histology of a human placenta, showing the normal condition of the chorionic lamellae. The connective tissue is well developed.
2. A histology of a human placenta, showing the normal condition of the chorionic lamellae. The connective tissue is well developed.
3. A histology of a human placenta, showing the normal condition of the chorionic lamellae. The connective tissue is well developed.
4. A histology of a human placenta, showing the normal condition of the chorionic lamellae. The connective tissue is well developed.
5. A histology of a human placenta, showing the normal condition of the chorionic lamellae. The connective tissue is well developed.



HUMAN PLACENTA. 20X.

1. The normal condition of a human placenta, showing the normal condition of the chorionic lamellae. The connective tissue is well developed.
2. A histology of a human placenta, showing the normal condition of the chorionic lamellae. The connective tissue is well developed.
3. A histology of a human placenta, showing the normal condition of the chorionic lamellae. The connective tissue is well developed.
4. A histology of a human placenta, showing the normal condition of the chorionic lamellae. The connective tissue is well developed.
5. A histology of a human placenta, showing the normal condition of the chorionic lamellae. The connective tissue is well developed.