

M0001163: Implement of ancient hunters found next the Piltdown fragments

Publication/Creation

15 August 1930

Persistent URL

<https://wellcomecollection.org/works/dw6unp8u>

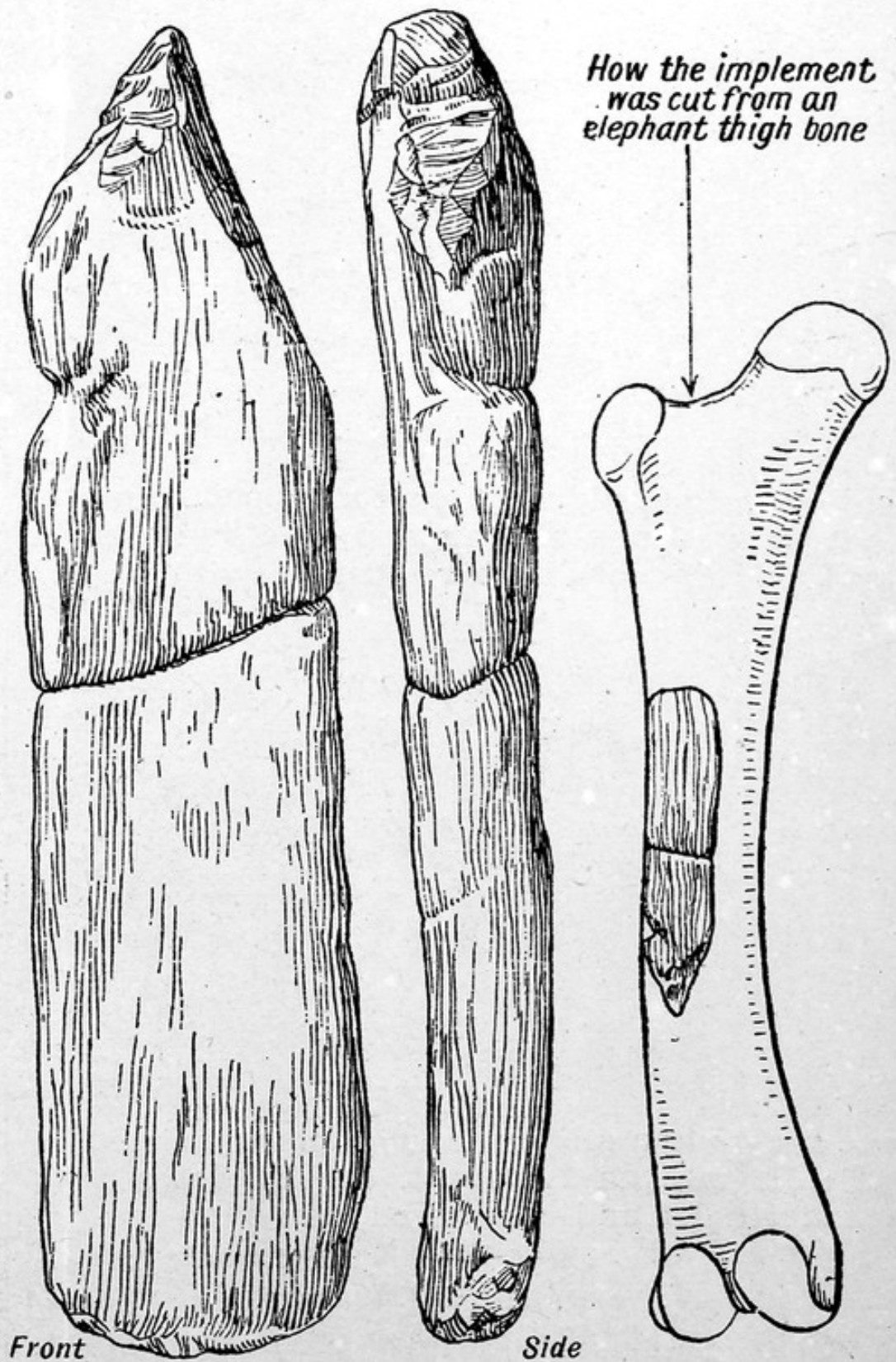
License and attribution

Conditions of use: it is possible this item is protected by copyright and/or related rights. You are free to use this item in any way that is permitted by the copyright and related rights legislation that applies to your use. For other uses you need to obtain permission from the rights-holder(s).



Wellcome Collection
183 Euston Road
London NW1 2BE UK
T +44 (0)20 7611 8722
E library@wellcomecollection.org
<https://wellcomecollection.org>

Chapter 4



IMPLEMENT OF ANCIENT HUNTERS

This unwieldy instrument was found near the Piltdown fragments, and is similarly fossilised. About sixteen inches long, it was cut, probably by Piltdown man, from the thigh bone of a gigantic elephant, long since extinct.

After Sir A. Smith Woodward