

**M0001152: The evolution of the human skull: ten structural stages.**

**Publication/Creation**

15 August 1930

**Persistent URL**

<https://wellcomecollection.org/works/gngjxan6>

**License and attribution**

Conditions of use: it is possible this item is protected by copyright and/or related rights. You are free to use this item in any way that is permitted by the copyright and related rights legislation that applies to your use. For other uses you need to obtain permission from the rights-holder(s).

**wellcome  
collection**

Wellcome Collection  
183 Euston Road  
London NW1 2BE UK  
T +44 (0)20 7611 8722  
E [library@wellcomecollection.org](mailto:library@wellcomecollection.org)  
<https://wellcomecollection.org>

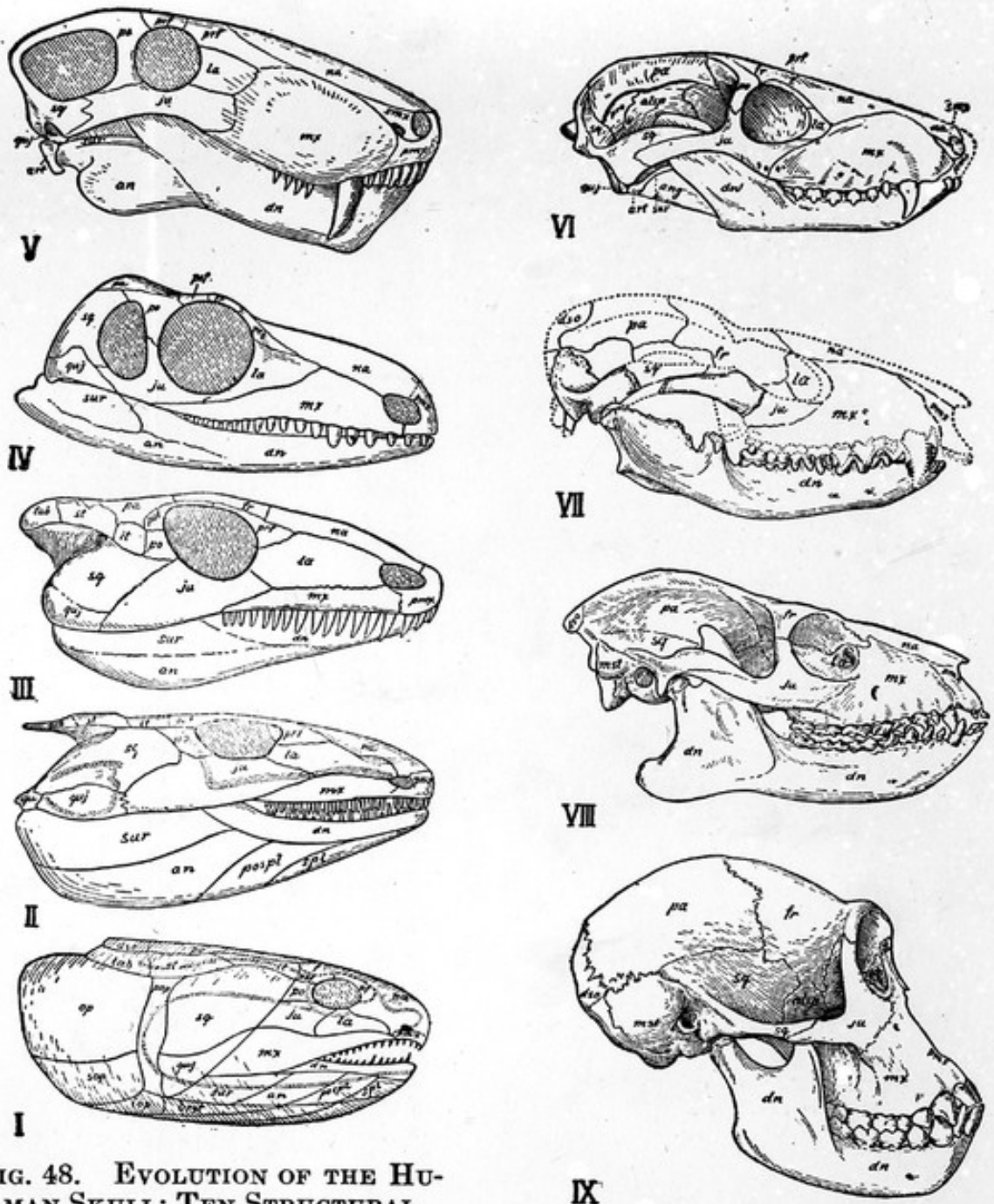


FIG. 48. EVOLUTION OF THE HUMAN SKULL: TEN STRUCTURAL STAGES.

I. Lobe-finned fish, Devonian age (after Traquair, Watson, Bryant). II. Primitive amphibian, Lower Carboniferous (after Watson). III. Primitive cotylosaurian reptile, Permo-Carboniferous (after Broili, Williston, Watson). IV. Primitive theromorph reptile, Permo-Carboniferous (after Williston). V. Gorgonopsian reptile, Permian (after Broom). VI. Primitive cynodont reptile, Triassic (after Broom, Haughton). VII. Primitive marsupial, Upper Cretaceous (after Matthew). VIII. Primitive primate, Eocene (after Gregory). IX. Anthropoid (female chimpanzee), Recent. X. Man, Recent.

For details, see pp. xxii, xxiii.