

**Medical photo library / The Wellcome Centre Medical Photographic Library.**

**Contributors**

Wellcome Trust (London, England). Wellcome Centre Medical Photographic Library.

**Publication/Creation**

[London] : [Wellcome Trust], [199?]

**Persistent URL**

<https://wellcomecollection.org/works/va54trqu>

**License and attribution**

You have permission to make copies of this work under a Creative Commons, Attribution license.

This licence permits unrestricted use, distribution, and reproduction in any medium, provided the original author and source are credited. See the Legal Code for further information.

Image source should be attributed as specified in the full catalogue record. If no source is given the image should be attributed to Wellcome Collection.



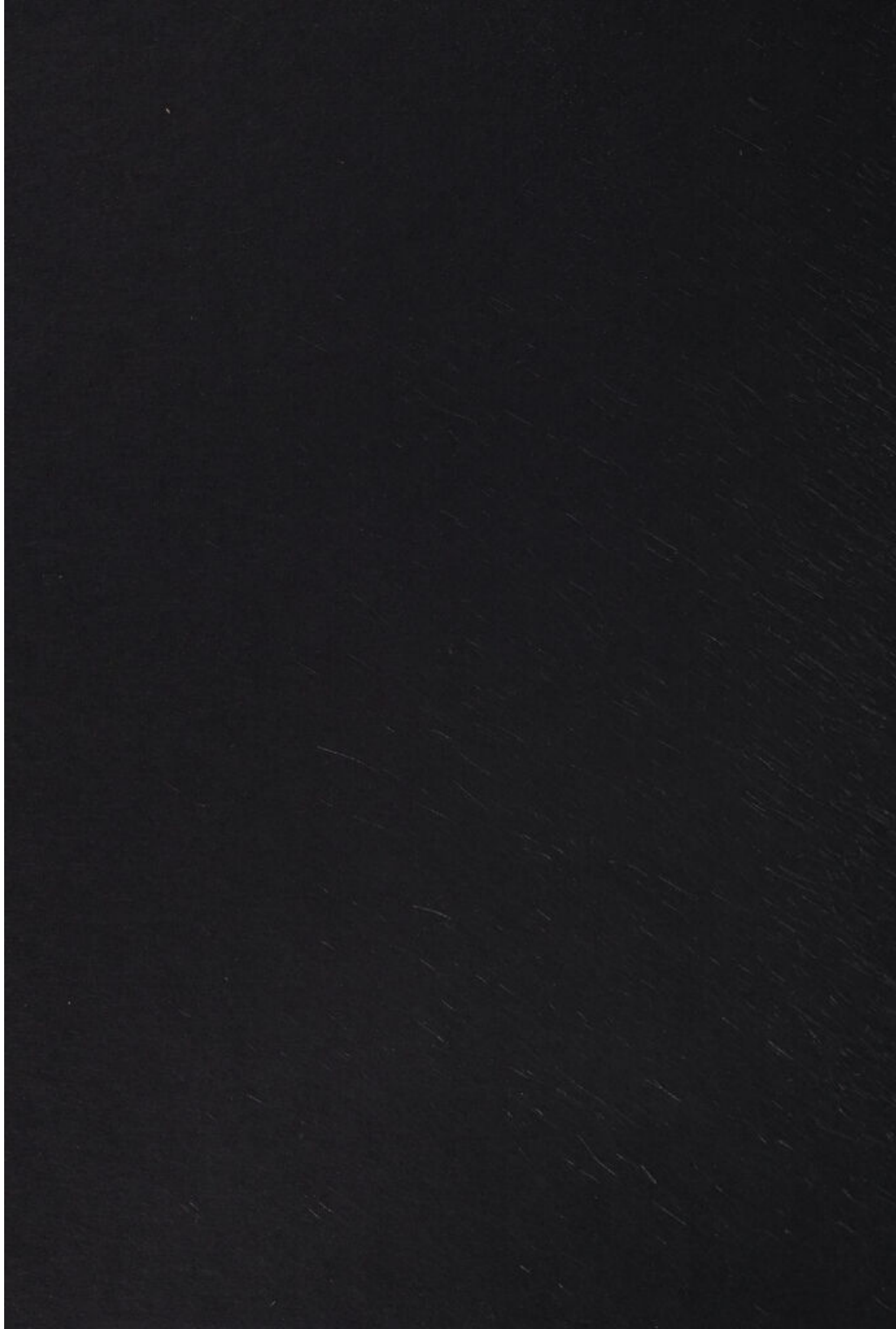
Wellcome Collection  
183 Euston Road  
London NW1 2BE UK  
T +44 (0)20 7611 8722  
E [library@wellcomecollection.org](mailto:library@wellcomecollection.org)  
<https://wellcomecollection.org>



MEDICAL PHOTO LIBRARY

THE WELLCOME CENTRE MEDICAL PHOTOGRAPHIC LIBRARY







THE WELLCOME CENTRE

MEDICAL PHOTOGRAPHIC LIBRARY



Left: Tibetan thangka painted on linen mounted on red brocade. A mandala with a black four-handed mahakala in the centre surrounded by eight figures. The square represents a palace with four ornate gates, date unknown.

Below:  
A thermograph  
of a normal  
human torso.



**Do you need images of the History of Medicine and Human Culture?**

**Do you need images of Modern Medical Science?**

Then contact the Wellcome Centre Medical Photographic Library.

*Photographic Library Manager*

Catherine Draycott **071 611 8588**

*Photographic Librarians*

Michele Minto **071 611 8520**

Clare Dunne **071 611 8598**

Julie Dorrington **071 611 8746**

Fax number **071 611 8577**

Below: Cityscape  
of Venice from  
the Nuremberg  
chronicle by  
Hartmann  
Schedel, 1493.



Opening hours: Monday - Friday 9.30 a.m. - 5.00 p.m.

Wellcome Centre for Medical Science

Wellcome Building, 183 Euston Road, London NW1 2BE







Right: Coloured  
etching 'Mixing a  
recipe for corns' by  
George Cruikshank,  
1835.

Below centre:  
Mezzotint illustration  
of ecorche human  
torso from *Anatomie  
generale des visceres en  
situation...* by Jacques  
Fabien Gautier  
D'Agoty, 1752.



Above:  
Normal retina  
of human eye.



Above: Allegory of  
Anglo-American DNA  
research, John Bull  
and Uncle Sam.  
Scraperboard with  
coloured inkwash by  
Bill Sanderson, 1990.

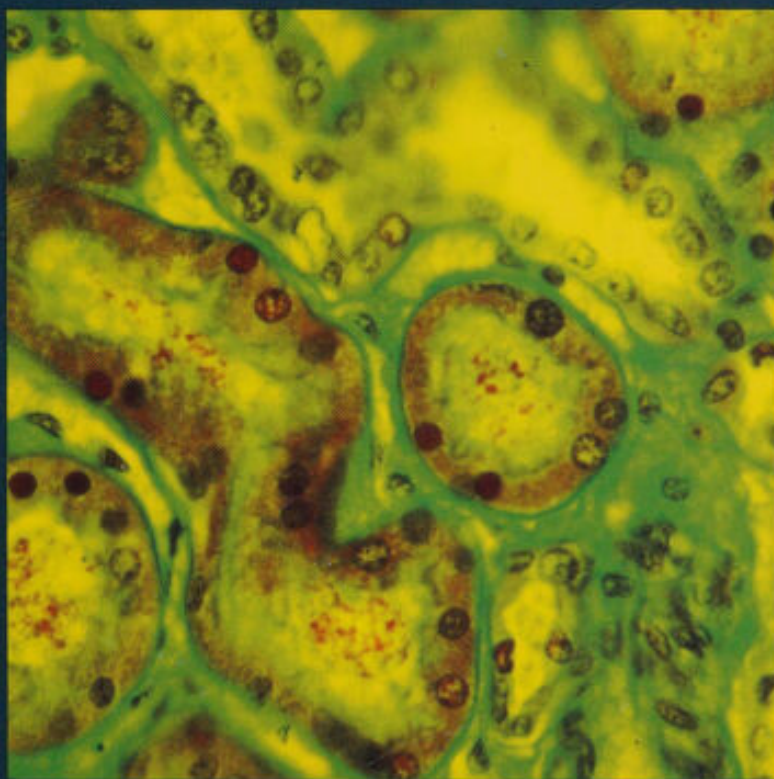




## NATIONAL MEDICAL SLIDE BANK



**Above: Goitre, an enlargement of the thyroid gland, usually visible as a swelling on the neck. Goitre is often a sign of insufficient iodine in the diet.**



**Left: Kidney tubules (photomicrograph). The kidney regulates the acid-base concentration and water balance in the tissues and discharges metabolic wastes as urine.**

The National Medical Slide Bank contains over 15 000 high-quality images selected from medical illustration departments and universities throughout the UK.

It covers clinical and general medicine with associated pathology and includes material illustrating medical imaging techniques from photography and X-ray to photomicrography and MRI scanning.

12 000 images from the Slide Bank collection can now be viewed on a videodisc, which provides a remarkable 'image database' for all those involved in healthcare – as well as educators and publishers requiring illustrative materials. The videodisc can be viewed in the Medical Photographic Library.

To enquire about pictures held in the Slide Bank please call 071 611 8746.



**Left: Operation in progress.**

**Bottom: A radiology department.**







**Top:** Psoriasis, a common skin disease characterised by thickened patches of inflamed, red skin, often covered by silvery scales.

**Above:** Breast feeding.



**Left:** Atopic eczema. This chronic, superficial inflammation occurs in people who have an inherited tendency towards allergy. It is common in babies.

#### Subject categories:

Apparatus

Blood

Circulatory system

Congenital disorders

Dermatology

Digestive system

Endocrinology

Genitourinary system

Infections and parasites

Injury and poisoning

Mental disorders

Metabolism

Musculoskeletal system

Neoplasms

Nervous system and sense organs

Normal anatomy

Nutrition

Pregnancy

Respiratory system

Techniques

Treatment



**Above:** A female mosquito of the genus *Anopheles*. Such mosquitoes are often responsible for transmitting malaria to humans.



**Far left:** Magnetic resonance imaging scanner. This technique is used to provide images of soft tissues such as the brain.

**Left:** Excision of a mole.





## USING THE PHOTO LIBRARY



Left: Tibetan thanka depicting the life of Prince Visvantara (detail). At the centre is a medicine Buddha in the Mongolian style. In his left hand he holds a vessel containing a bezoar – a medicinal mixture made from the stomach of a cow, date unknown.

### Enquiries

Telephone, fax or write with your enquiry or call in person. Please be as specific as possible with your request, but if you need advice our experienced picture researchers will be pleased to help you with your choice.

### Formats available

We supply black-and-white or colour prints, 35mm slides and transparencies of all formats. Material is supplied ON LOAN for a period of up to six weeks. A search and service fee is levied at this stage. This loan period can be extended if use of the picture has been confirmed and agreed in writing – otherwise holding fees are chargeable.

### Express service

We offer an express service – let us know when your deadlines are and we will do our best to meet them.

Below:  
Persian miniature  
depicting the birth  
of Rustem by  
caesarian section,  
date unknown.







Left: Illustration of amputation of the leg, from *Manuel de medecine operateire*, by Joseph-Francois Maligne, 1874.

Below:  
Mezzotint, from  
*Myologie complete  
en couleur et  
grandeur naturelle...*  
by Jacques Fabien  
Gautier d'Agoty,  
1746.



## Reproduction fees

(non-exclusive rights, net of foreign royalty taxes, payable on publication)

Reproduction fees are negotiated according to each application and must be agreed before use of the image. Permission to use

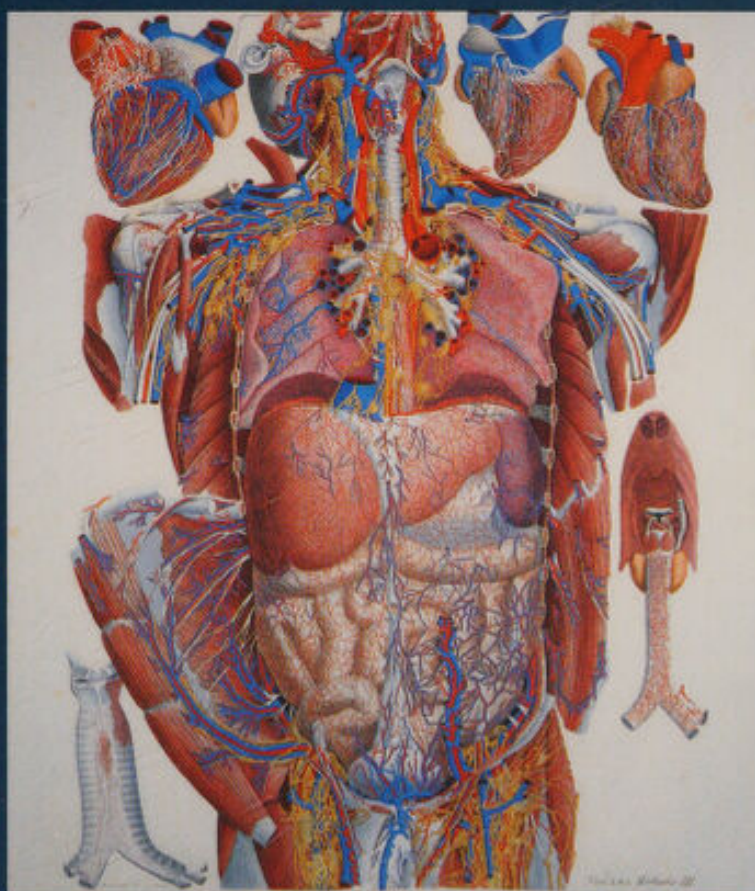
a picture is granted when a fee for the use has been agreed and an invoice issued. Any usage without permission may incur a surcharge. Loss of or damage to any image is always charged and can be very costly in the case of an original.



Left: *Cinchona officinalis*, from *Medicinal plants* by Robert Bentley and Henry Trimen, 1880.







Left: Anatomical illustration of human viscera, from *Anatomiae universae*, by Paolo Mascagni, 1823-32.



Above: Plate of the brain exposed, by Julius Casserius from *De humani corporis fabrica*, by A Spigelius, 1632.



Above: Chinese coloured drawing on rice paper of a procession, 19th century.  
Left: Pastel of Bear Hat. Kootenai, by W Langdon Kihn, 1926.





## LIST OF SUBJECT AREAS

Right: Illustration of Mexican hieroglyph, (detail) from *Antiquities of Mexico* by Lord Edward Kingsborough, 1831.



Below: Coloured reproduction of caricature of Charles Darwin from the front cover of the *London Sketch Book*.

The following are just some of the subject areas covered by the collection:

Anaesthesia	Folklore	Psychiatry
Anatomy	Institutions	Public Health
Antiquities	Nursing	Quackery
Apothecaries	Ophthalmology	Religion
Astrology	Orientalia	Satire
Childbirth	Pharmacy	Surgery
Dentistry	Portraits	Tropical Medicine
Disease	Primitive Medicine	War







### Microfilm

35mm positive microfilm at £0.22 per frame. Orders will be accepted for whole books or manuscripts only. Paper copies from existing microfilm are available in the library from the microfilm reader/printer at £0.20 per A4 copy.

### Borrowing

Slides can be loaned for up to six weeks. They must be returned by registered post, courier or by hand against signature. For this service a minimum search and service fee of £15 is charged.



Above: Chalk drawing: lateral view of the trunk of flayed human cadaver by Charles Landseer, 1815.

Right: 'Wound man', from *Feldtbuch der Wundartzney*, by Hans von Gersdorf, 1530.

### Reproduction Fees

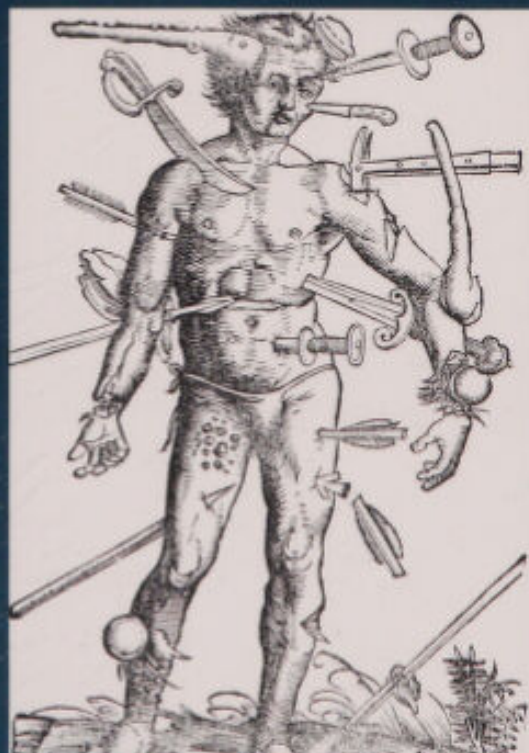
Reproduction fees are assessed according to use and must be agreed before publication. Please contact the Medical Photo Library for further information.

*NB: 17.5% VAT to be added to UK orders; mailing costs to be added for orders requiring dispatch.*

*Please do not pay in advance; an invoice will be sent. Foreign cheques made out in sterling must be drawn on a UK bank account. Bank charges on sterling cheques issued by foreign banks are payable by the purchaser. Special rates are available for members of the Wellcome Units for the History of Medicine, for Wellcome Fellows and for students enrolled at University College London for courses in the history of medicine.*



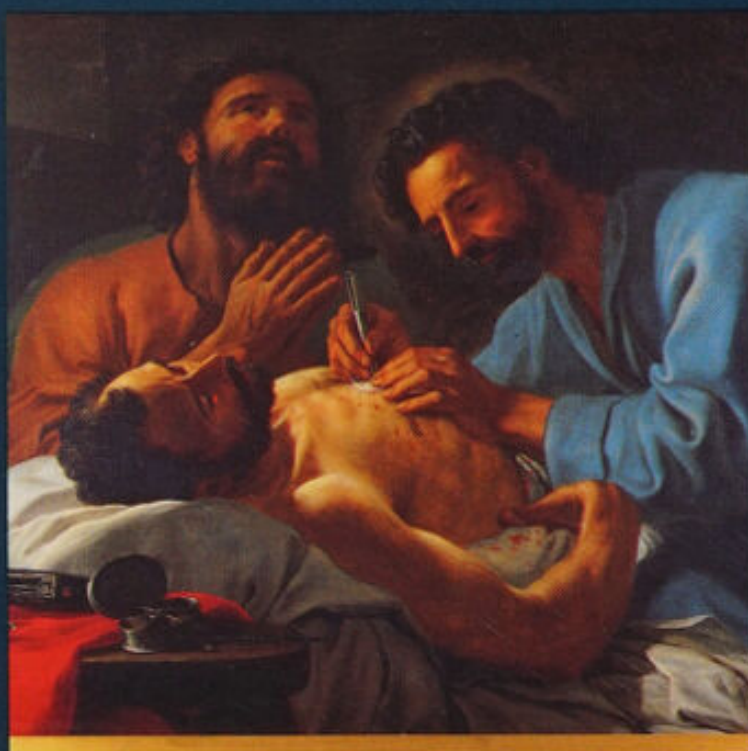
Above: Engraving of a maniac in a straitjacket by Ambroise Tardieu from *Des maladies mentales...* by Jean Etienne Dominique Esquirol, 1838.





## PRICE LIST

Right:  
Oil painting on  
canvas (detail)  
Saints Cosmas  
and Damian  
dressing a wound  
on a man's chest,  
by Antoine de  
Favray, 1748.



Below: Mezzotint  
of spectral  
skeleton, from  
*Myologie  
complete en  
couleur et  
grandeur  
naturelle...* by  
Jacques Fabien  
Gautier d'Agoty,  
1746.

For research, private study or lecture use, photographs  
and microfilm are charged as follows:

### Black-and-white prints

7"×5" (12.7×17.8mm) £3.00	12"×10" (24×30.5mm) £8.00
8"×6" (15.2×20.3mm) £4.00	16"×12" (30.5×40.6mm) £12.00
10"×8" (20.3×25.4mm) £5.00	20"×16" (40.6×50.8mm) £20.00

(25% discount on extra copies of the same image. Other sizes  
can be reproduced on request; please specify on order form.)

**Colour Prints** Estimates available on request. Colour  
photocopies for reference are available for £1.75 per copy.

**Slides** 35mm black-and-white or colour £5.00

**Colour Transparencies** 5"×4" £30.00

Material supplied for academic purposes may be retained  
by the scholar. Photographic request forms are available  
from the Photo Library or from Reader Services on the  
second floor of the Wellcome Building.











The Wellcome Centre Medical Photographic Library has an archive of over 100 000 photographs of images of the history of medicine from antiquity to the birth and development of modern Western medicine.

The material reflects the remarkable diversity of the interests of Sir Henry Wellcome, who devoted much of his life to amassing what is now the largest collection of its kind in Europe. The Photo Library's resources have been greatly enriched by the acquisition of the National Medical Slide Bank, a collection of over 15 000 photos on modern clinical medicine.

Some examples of the sort of images that can be supplied are shown here, but this is only a small selection. As well as the extensive collection of medically related images, we also hold many photographs of material as diverse as Tibetan thankas, ancient Sanskrit manuscripts, medieval herbals and Persian horoscopes. Three videodiscs, one on the Iconographic Collections of the Wellcome Institute Library, one on tropical diseases and one on modern clinical medicine, can be viewed in the Medical Photographic Library. Images can be supplied for academic use or publication.

Opening hours:

Monday - Friday 9.30 a.m. - 5.00 p.m.

Tel: 071 611 8888; Fax: 071 611 8577

The area is open to the public, preferably by appointment.



THE WELLCOME TRUST

*Designed and Produced by the Wellcome Trust Publishing Department*

*The Wellcome Trust is a registered charity, number 210183*