

## **Modern sanitation without drains / Elsan Manufacturing Co.**

### **Contributors**

Elsan Manufacturing Co.

### **Publication/Creation**

London : Elsan Manufacturing Co., [1937?]

### **Persistent URL**

<https://wellcomecollection.org/works/jd9w3yxh>

### **License and attribution**

This work has been identified as being free of known restrictions under copyright law, including all related and neighbouring rights and is being made available under the Creative Commons, Public Domain Mark.

You can copy, modify, distribute and perform the work, even for commercial purposes, without asking permission.



Wellcome Collection  
183 Euston Road  
London NW1 2BE UK  
T +44 (0)20 7611 8722  
E [library@wellcomecollection.org](mailto:library@wellcomecollection.org)  
<https://wellcomecollection.org>

# Modern Sanitation **WITHOUT DRAINS**



# ELSAN



# The Elsan Guarantee

The Elsan Manufacturing Company hereby guarantees the Elsan Chemical Closet to be leak-proof for periods specified ; to be odourless, germ-proof and hygienic in operation ; and to continue so, provided that only Elsanol Chemical is used, in accordance with instructions supplied.

Awarded  
Seven  
Medals



Royal  
Sanitary  
Institute

1931 — 1937

**ELSAN IS A PROVEN SYSTEM—  
LOCAL AUTHORITIES RECOMMEND IT**

H.M. Estates, Windsor and Sandringham  
—70 Elsans installed.

Hundreds of Corporations and Councils  
install Elsan on Housing Estates,  
Public Conveniences,  
Recreation Grounds, Schools, etc.

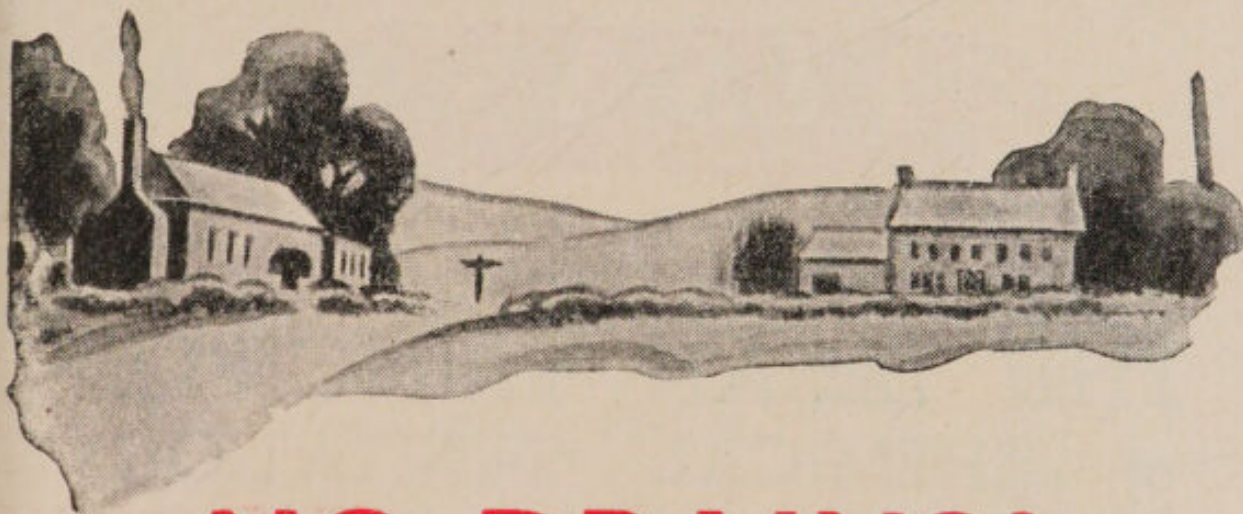
TENS OF THOUSANDS IN USE

**PROVED BY THE PUBLIC  
APPROVED BY AUTHORITIES**



22501567505





# NO DRAINS?

Then here is the Solution  
to your Sanitary Problem

**I**N rural and seaside areas without main drainage, proper Sanitation is a serious problem.

So much so, that most of the inhabitants have had to tolerate obsolete, dangerous and offensive arrangements such as earth closets, middens, and cesspools, for want of a better system.

Many however, are unaware of the **constant danger of disease**—through bacteria contained in sewage, through insects and vermin, through soil and water contamination and through chills caused by the exposed condition of the garden huts so commonly used.

Such sanitary makeshifts belong to the past.

At trifling cost, every country-dweller can have the modern ELSAN Sanitation—hygienic, safe and odourless; needing no drains or water-flush; and bringing to rural areas the comforts and convenience of city life.

170-PAM WA 830  
1937  
E49m







## THE ELSAN PRINCIPLE of CHEMICAL SANITATION

The Elsan Sanitary System was designed with two main objects:—

1. Destruction of all germs present in the sewage.
2. Elimination of offensive odour.

The first object was attained by the production of a strong germicide—ELSANOL—which, whilst perfectly safe for household use, mixes freely with urine and sewage and does not lose its power in so doing.

To overcome the second problem, a patent ventilation system was invented for the Closet; and an ingredient was incorporated in ELSANOL which would form a surface seal over the solution in the Closet. Sewage passes through this seal and is immediately treated by the germicide below; the seal closes again over the top, and prevents all odour and offensive appearance.

**Only ELSANOL serves this purpose; no other disinfectant can do it.**

**NO CORROSION**—Elsanol will not corrode the metal of Elsan containers.

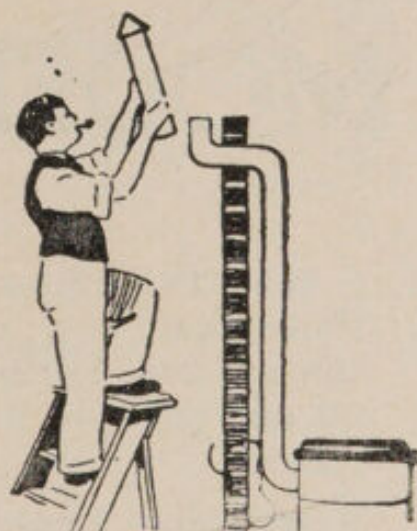
**ECONOMICAL MAINTENANCE**—The use of Elsanol ensures low maintenance cost, and reduces the frequency of emptying to a minimum. The 1-pint charge lasts, on an average, 3 weeks.





# ALL YOU HAVE TO DO . . . .

ELSAN is simplicity itself. You just pour one gallon of water into the container, and add one pint of Elsanol. This is sufficient to treat the whole contents, and you need renew it only when the container becomes full—about once in 2 to 4 weeks, according to use.



Any handy-man can  
fit it !

## Disposal of Contents.

The container can be removed as a complete unit for emptying, and is provided with carrying and tipping handles for this purpose. The treated material is usually disposed of by digging into the ground, but, in any case, no offensive smell is possible, and it will not attract flies or vermin. Alternatively, it may be used as a fertiliser.

## SIMPLE TO FIT.

The only fitting necessary is to lead the ventilation pipe through wall, roof or window. Any handy-man can fit it !

## NOTE THESE EXCLUSIVE ELSAN FEATURES!

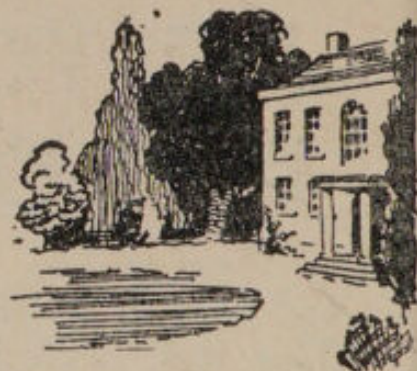
**Protection of Metal Parts.** All metal parts galvanised, or galvanised and enamelled *after manufacture* for protection against rust.

**Ventilation System.** The *front* air inlets, a patent Elsan feature, are essential for any efficient ventilation.

**Urinal Guard (Patent).** Prevents urine penetrating into base of ventilation chamber and so avoids corrosion and bad odours.



# ELSAN MODEL 55



Made from finest quality English steel throughout, to give a lifetime of efficient use. Finished in elegant eau-de-nil and gold, to do credit to any bathroom.

**Ventilation Chamber.** Heavy gauge steel on rigid steel base to prevent corrosion. Proofed to withstand rust.

**Sewage Container.**—GUARANTEED FOR TEN YEARS. Seamless construction, double process vitreous-enamelled. 7 gallons capacity.

**Urinal Guard (Patent).** Double-process vitreous - enamelled in eau-de-nil.

**Ventilation fittings.** Seven 1-ft. lengths 3-in. dia. piping, three elbows and cowl, all enamelled eau-de-nil.

**Seat and Cover.** Fully seasoned hardwood, polished mahogany finish. Guaranteed not to warp. Chromium plated hinges.



COMPLETE

£6-6-0



# ELSAN MODEL 44



Very popular, and highly efficient. Will give many years of satisfactory service. Made from best quality materials, and well finished in Swedish green.

**Ventilation Chamber.** Mounted on steel runners and domes. Processed to withstand rust.

**Sewage Container.**—GUARANTEED FOR FIVE YEARS. Seamless construction, vitreous-enamelled. 7 gallons capacity.

**Urinal Guard.** Stove enamelled Swedish Green.

**Ventilation fittings.** Six 1-ft. lengths 3-in. piping, three elbows and cowl, all galvanised.

**Seat and Cover.** Seasoned hardwood, polished mahogany finish. Guaranteed not to warp. Solid brass hinges.



COMPLETE

£4-10-0



# ELSAN MODEL 33

A serviceable Model of smaller capacity, specially suitable for the week-end bungalow or other occasional uses, or where first cost must be the deciding factor. Finished in Olive Green enamel.

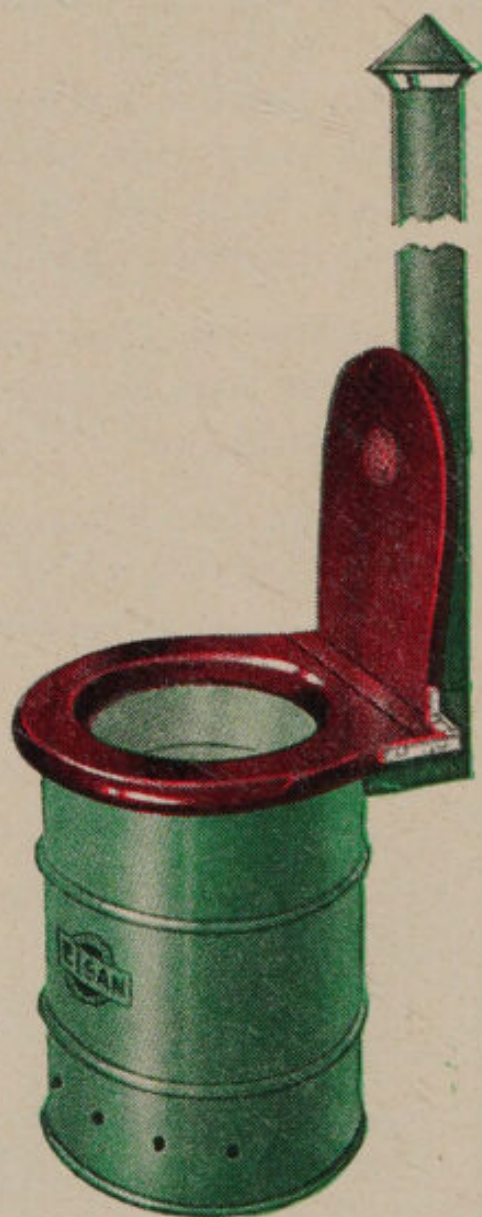
**Ventilation Chamber.** Inset bottom plate, strongly swaged, and processed to withstand rust.

**Sewage Container.**—GUARANTEED TWO YEARS. Locked seams, galvanised after manufacture. Capacity 5 gallons.

**Urinal Guard (Patent).** Galvanised.

**Ventilation Fittings.** Six 1-ft. lengths 3-in. pipe, one elbow and cowl. All galvanised.

**Seat and Lid.** Polished mahogany colour, well seasoned wood with brass fittings.



COMPLETE

**£2-17-6**





# ELSAN MODEL 66

## Self-Flushing

Just like a water-closet, but needs no connection to running water. Self-flushing pan screens contents of container from view, prevents splash, and ensures complete submersion of sewage and paper by the flushing action.

Elsanol solution is flushed automatically into the pan, the supply being replenished after each use. Sewage is emptied into container by tipping the pan.

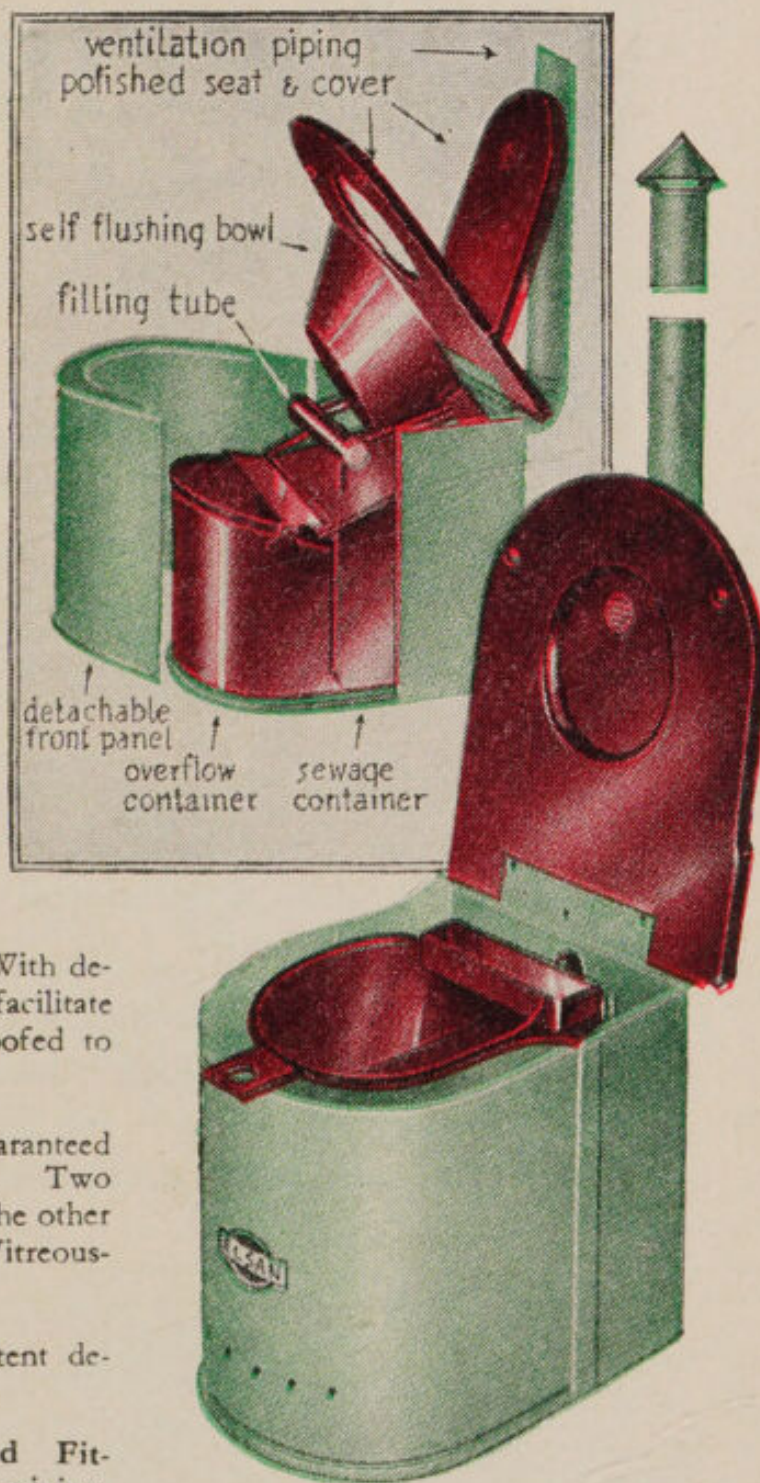
**Ventilation Chamber.** With detachable front panel to facilitate removal of containers. Proofed to withstand rust.

**Sewage Containers.**—Guaranteed leakproof and serviceable. Two supplied, one for sewage, the other for liquid overflow. Vitreous-enamelled.

**Self-flushing Bowl.** Patent design. Vitreous-enamelled.

**Ventilation Piping and Fittings.** Seven 1-ft. lengths piping, three bends and cowl, all enamelled.

**Seat and Cover.** Stained and polished mahogany finish. Guaranteed not to warp. Chromium-plated fittings.

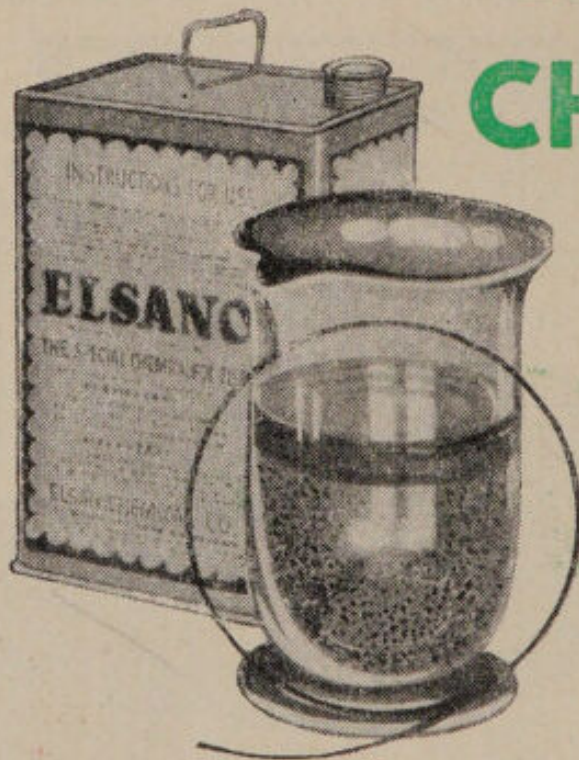


COMPLETE

**£8-8-0**



# ELSANOL CHEMICAL



(PATENT)

*Essential for  
Elsan Closets*

**T**o obtain the full health safeguards and refinements of the Elsan System, it is essential to use only ELSANOL Chemical.

Elsanol was prepared specially for use with Chemical Closets. No other Chemical can do the three essential jobs which Elsanol does: *i.e.*, mix with urine and sewage; render them inoffensive: and at the same time completely seal their odour.

**WE GUARANTEE THE ELSAN  
CLOSET ONLY IF ELSANOL IS  
USED**

With Elsanol, both maintenance cost and frequency of emptying are reduced to a minimum.

*In the NEW Convenient  
ONE CHARGE TIN*

*Also, 1-Gallon Tin (8 Charges)*

**1/-**

**5'-**





*For Larger Buildings —*

# ELSAN PERMANENT TANK SYSTEMS

*Self-Flushing, Self-Emptying*

For the larger private residence, and for Schools, Factories, Hospitals, Public Institutions, Sports Pavilions, Public Conveniences, etc., we have perfected the Elsan Permanent Tank Systems.

Without drains or water-flush, they provide every convenience of the modern W.C. They are self-flushing and self-emptying, and any number of persons can be catered for. No trouble and very economical to maintain.

Yet, simple to fit anywhere. Antiseptic Tank is fitted under the floor, and is connected by drain pipe to a soakaway pit in any convenient part of the grounds.

Alternative methods of disposal available, where soakaways are not practicable.

Underground Tank Systems, in single or multiple units **£20**  
from

Overground Models ..from **£10-10-0**

*For full particulars  
write for*

## COMPLETE CATALOGUE

Please mention the type of installation you have in mind, and we will gladly send detailed plans, without obligation.







and

**"ELSANOL" CHEMICAL**

*are made only by*

**ELSAN Mfg. Co.**

**51, CLAPHAM ROAD,  
LONDON, S.W.9**

*'Phone : RELiance 2801*

*Telegrams : Eljaksiv, Claproad, London*

If the Models illustrated in this Leaflet do not meet your exact requirements—please write to our Technical Department for

**FREE ADVICE ON YOUR  
PARTICULAR PROBLEM**

Self-Drainage Systems, for larger buildings also special Camp and Caravan Models—details sent gladly on request.