

**Souvenir of the incorporation of Dartford as a municipal borough,
September 13, 1933.**

Contributors

Dartford (England). Urban District Council.

Publication/Creation

Dartford, Eng. : Urban District Council of Dartford, 1933.

Persistent URL

<https://wellcomecollection.org/works/aw6hs8fy>

License and attribution

Conditions of use: it is possible this item is protected by copyright and/or related rights. You are free to use this item in any way that is permitted by the copyright and related rights legislation that applies to your use. For other uses you need to obtain permission from the rights-holder(s).



Wellcome Collection
183 Euston Road
London NW1 2BE UK
T +44 (0)20 7611 8722
E library@wellcomecollection.org
<https://wellcomecollection.org>

SOUVENIR
OF THE
INCORPORATION
OF
DARTFORD
AS A
MUNICIPAL BOROUGH
SEPTEMBER 13, 1933



22501690943



Wellcome Library
for the History
and Understanding
of Medicine

**WELLCOME
COLLECTION**

/ (32)

19/1/34

131







September, 1933.

On behalf of the oldest Corporation in England, I have the privilege to-day of presenting the Charter which His Majesty has been graciously pleased to grant, incorporating Dartford as a Municipal Borough.

Its historical associations over many centuries and the development and growth of Dartford during recent years, both industrially and in population, has merited the new status and dignity which it is acquiring, and the granting of this Charter by His Majesty is a well deserved recognition of the importance which the district has attained.

I feel sure that Dartford will prove fully equal to its new and increased responsibilities for its civic life has been built up on the solid foundation of sound local government.

I look forward, with confidence, to its future and on behalf of the Corporation of the City of London wish the new Borough every success.

Lord Mayor of London.



ARMS OF THE BOROUGH OF DARTFORD.



OFFICIAL BLAZON.

ARMS.—Gules on a fesse argent between in chief a jester's head habited in a fool's cap couped at the neck or, between two bezants each charged with an ear of wheat proper and in base an anvil of the third, a barrulet wavy azure.

SUPPORTERS.—On the dexter side, a Hermit, holding in the exterior hand a staff, and on the sinister side a Prioress holding in the exterior a pastoral staff proper.

MOTTO.—“Tenax et Fidelis.”

NOTES DESCRIPTIVE OF THE BOROUGH ARMS.

The Arms and Supporters which have been granted to the Borough by the College of Arms under Royal Letters Patent are blazoned in terms of Heraldry as follows :—

Gules on a fesse argent between in chief a jester's head habited in a fool's cap couped at the neck or, between two bezants each charged with an ear of wheat proper and in base an anvil of the third, a barrulet wavy azure. Supporters, to the dexter a Hermit holding in the exterior hand a staff, and to the sinister a Prioress holding in the exterior a pastoral staff proper.

The waters of the Darent appropriately form the central feature of the design. These are aptly rendered in Heraldic convention by means of the stretch of silver traversed by a winding band of blue which reaches across the shield. Other charges mark some of the great industries for which the Borough is famous. Paper-making is represented in the playful spirit which is traditional in Heraldry by the Fool's Cap. It is of interest in this connection to note that the emblem is found as a water-mark in paper as early as the reign of King Charles II. On either side are golden roundels, which are as near as Heraldry permits to get to the familiar tabloids of our chemical factories. These are charged with ears of wheat, symbolizing another of the staple industries of the Borough. The golden anvil at the base of the shield is emblematical of the great engineering and metal working interests.

In the Supporters, who are the upholders and guardians of the shield, we are carried back to the ancient history and traditions of Dartford. On the one side stands the hermit, who serves to typify those recluses who, by their holy lives and untiring devotion to the cause of humanity, set a noble example for all time. It may, moreover, be recalled that it was through their exertions that funds were obtained for erecting the first bridge over the Darent. The earliest hermit of whom there is any record, John Sodeman by name, under the title of "Hermit of the Chapel of the Blessed Virgin and Martyr, St. Katherine of Dertford, for the reformation of the poor," obtained Letters of Indulgence from the Bishop of the Diocese on the 1st of June, 1438. The Prioress, who shares with the Hermit the office of supporting and maintaining the shield, takes us back to an even earlier date, since it was in 1355 that the Augustinian Nunnery was established by King Edward III.

The English translation of the motto "*Tenax et Fidelis*" is Steadfast and Faithful.



THE RIGHT HONOURABLE THE LORD MAYOR.
ALDERMAN SIR PERCY W. GREENAWAY.



LADY GREENAWAY.
THE LADY MAYORESS OF LONDON.



MR. ALDERMAN A. J. PENNEY, J.P.
THE CHARTER MAYOR.



MRS. A. J. PENNEY.
THE CHARTER MAYORESS.



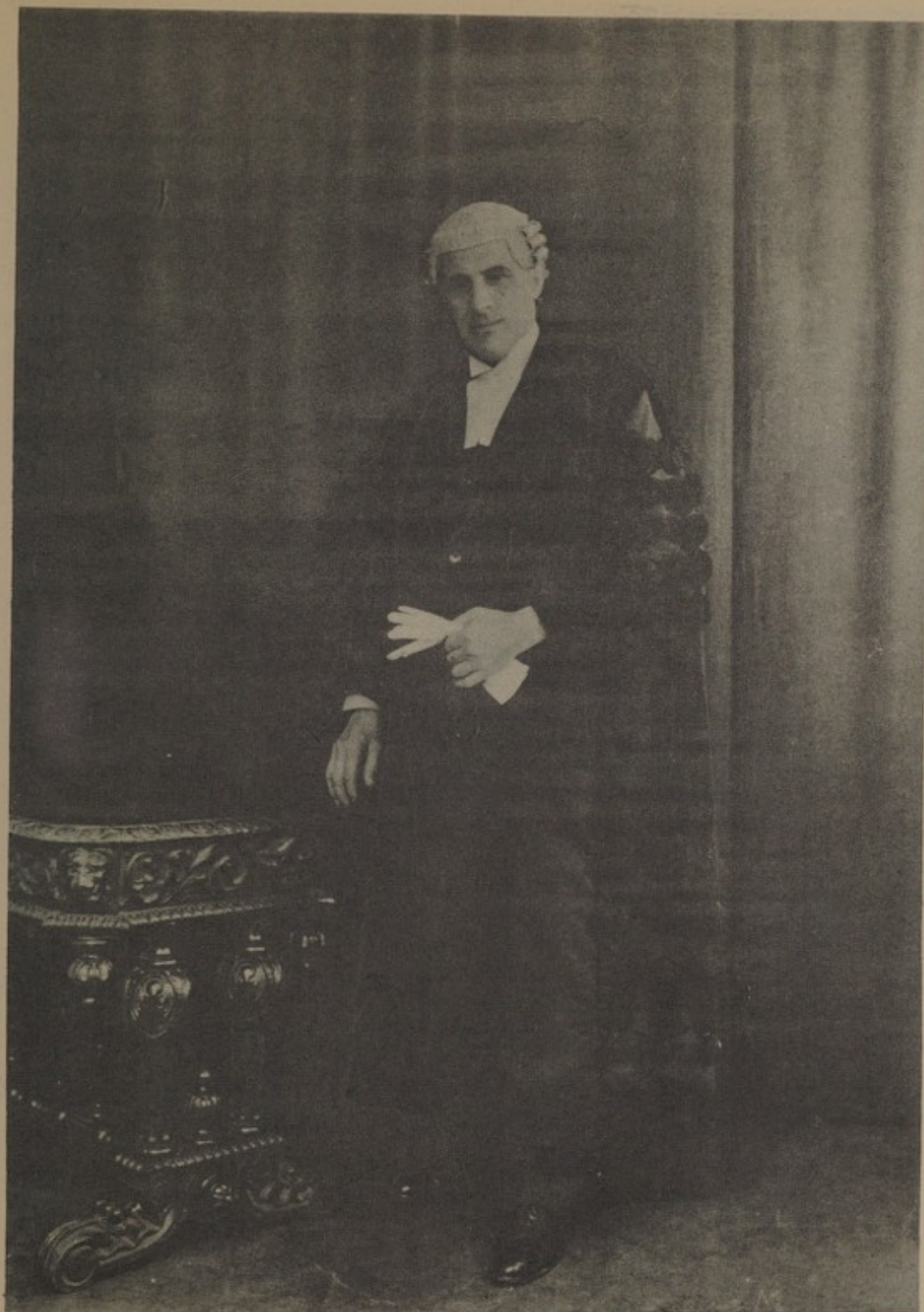
MR. COUNCILLOR ALEC WEBB, J.P.,
THE DEPUTY CHARTER MAYOR.



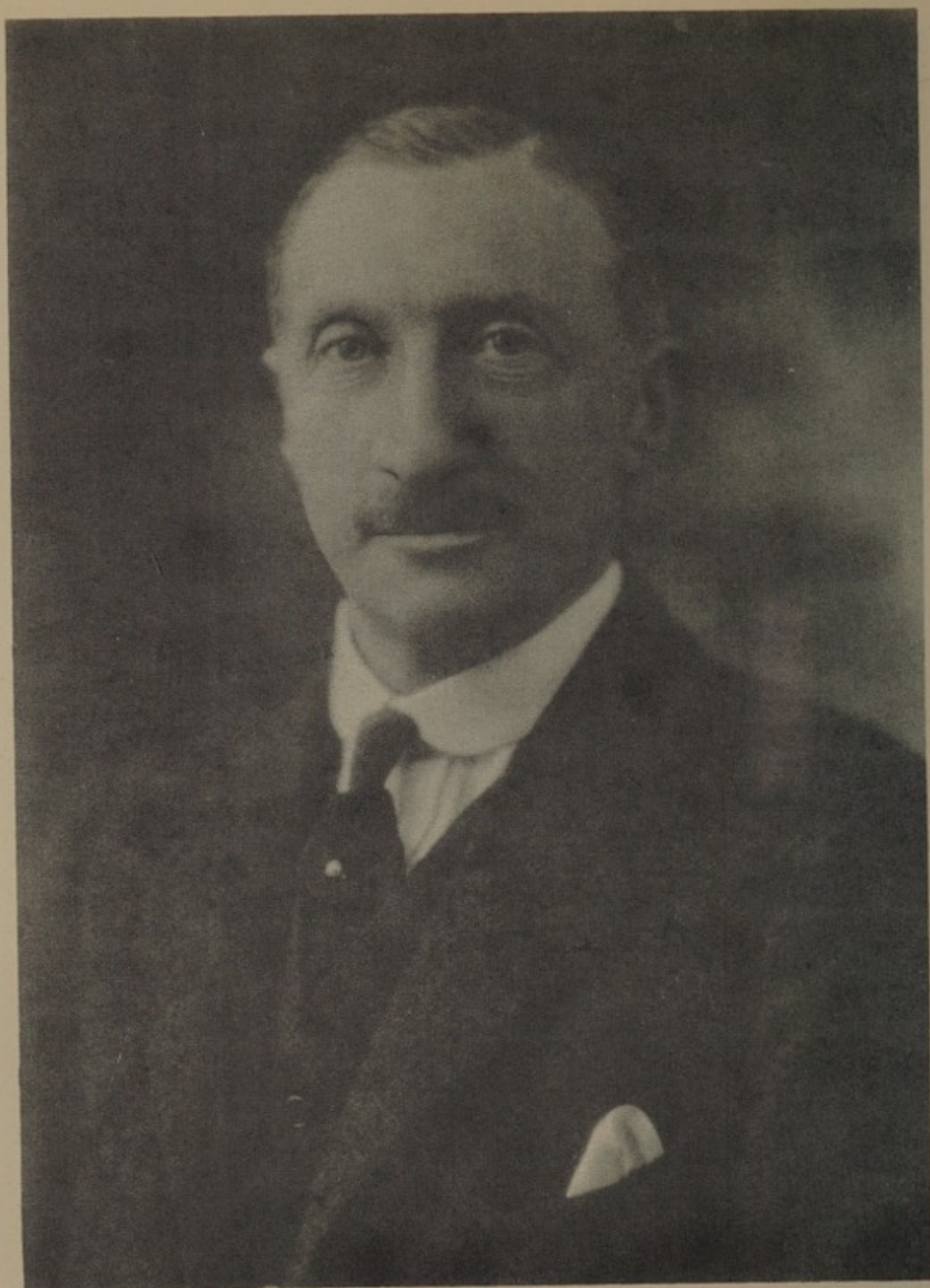
MRS. ALEC WEBB.
THE DEPUTY CHARTER MAYORESS.



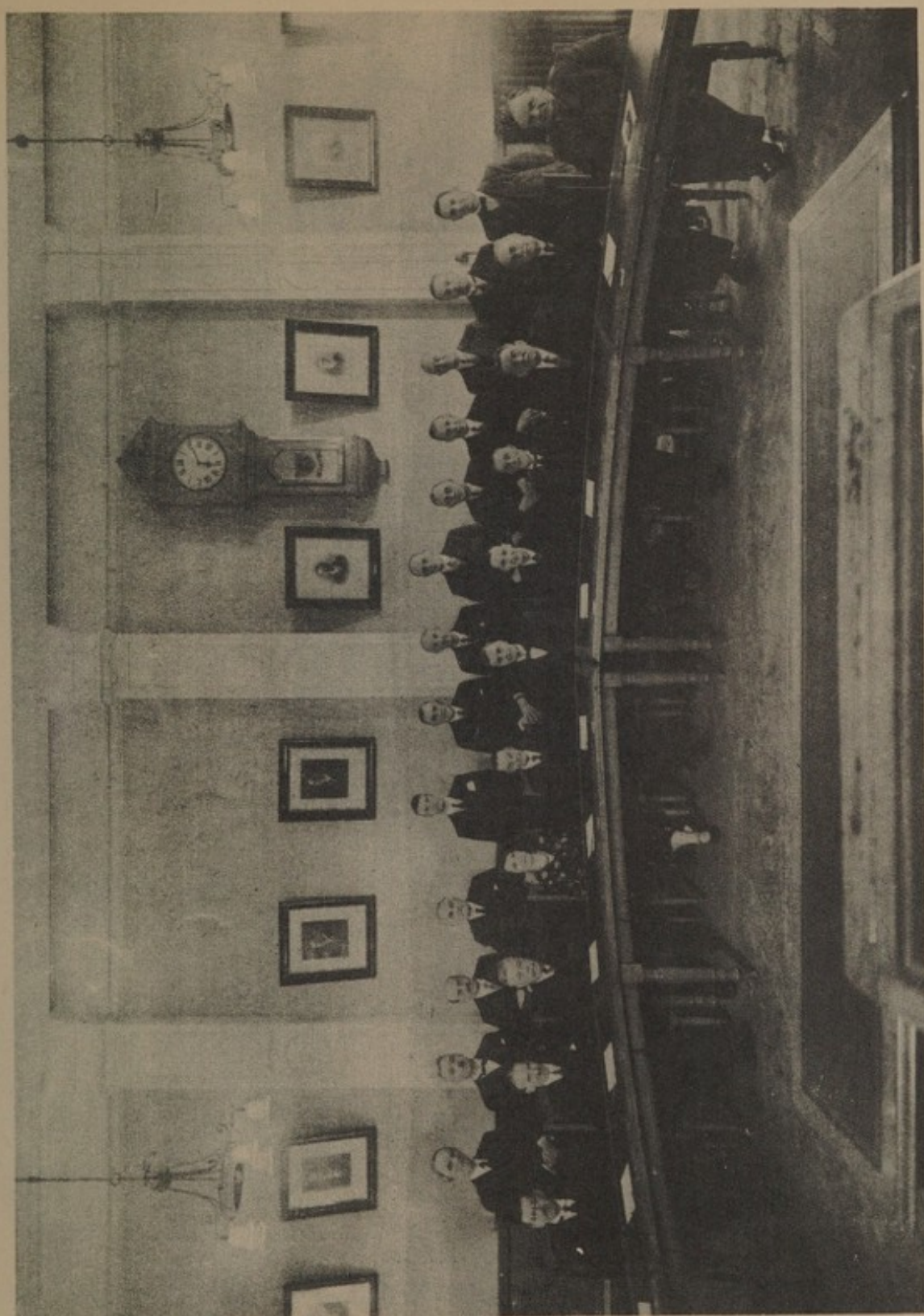
W. F. BLAY, Esq., C.C.,
CHAIRMAN OF THE INCORPORATION COMMITTEE!



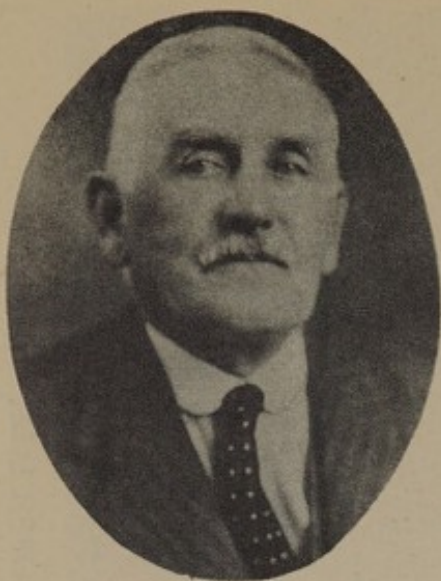
MR. J. JAMES HURTLEY.
THE CHARTER TOWN CLERK.



THE MOST HON. THE MARQUIS CAMDEN.
LORD LIEUTENANT OF KENT.



DARTFORD URBAN DISTRICT COUNCIL AND OFFICIALS,
1933.



T. E. TIFFIN, Esq., A.M.I.C.E.,
Engineer and Surveyor.



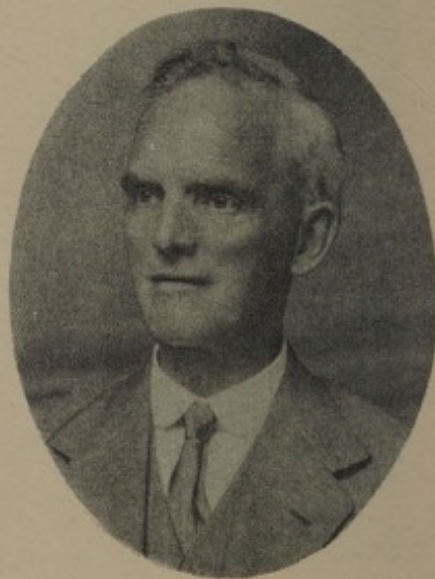
DR. T. FARTHING, M.B.,
Medical Officer of Health.



L. A. DENYER, Esq.,
Treasurer.



F. H. EDWARDS, Esq., M.I.E.E.,
Electrical Engineer.



E. WOOD, Esq.,
Librarian.

Charter of Incorporation.



GEORGE THE FIFTH, by the Grace of God, of Great Britain, Ireland and the British Dominions beyond the Seas, King, Defender of the Faith, Emperor of India ;

To all to whom these Presents shall come, Greeting !

WHEREAS the Dartford Urban District Council and certain Inhabitant householders of the Urban District of Dartford, in the County of Kent, being members thereof, did, in the month of March, One thousand nine hundred and thirty and the month of March, One thousand nine hundred and twenty-seven respectively petition Us for the Grant of a Charter of Incorporation :

AND WHEREAS such Petitions were referred by Us to a Committee of Our Privy Council and one month at least before the same was taken into consideration by the said Committee notice thereof and of the time when the same was to be taken into consideration was duly published in the " London Gazette " and otherwise as directed by the Committee :

AND WHEREAS pursuant to Section 56 of the Local Government Act, 1888, notice of the said Petition was given to the County Council of the Administrative County of Kent, and was also sent to the Minister of Health, and Our Privy Council have considered such representations as were made by the said County Council and the Minister of Health together with the Petitions for such Charter :

AND WHEREAS Our Privy Council have recommended Us to grant a Charter of Incorporation to the Inhabitants of the said Urban District of Dartford :

WE, THEREFORE, as well by virtue of Our Royal Prerogative, as in pursuance of and in accordance with the Municipal Corporations Act, 1882, or

any other Act or Acts, and of all powers and authorities, enabling Us in this behalf, by and with the advice of Our Privy Council do hereby grant, order and declare as follows :—

1.—The District comprised within the limits set forth in Part I of the First Schedule to these Presents is hereby created a Municipal Borough by the name of the “Borough of Dartford.”

2.—The Inhabitants of the said District comprised within the said limits and their successors shall be and are hereby declared to be one Body Politic and Corporate by the name of “The Mayor, Aldermen and Burgesses of the Borough of Dartford” with perpetual succession and a Common Seal, and may assume Armorial bearings (which shall be duly enrolled in the Herald’s College) and may take and hold any lands, tenements and hereditaments which may be vested in them by any Scheme made under Part XI. of the Municipal Corporations Act, 1882, and such other lands, tenements and hereditaments as well without as within the Borough as may be necessary for the site of the buildings and premises required for the official purposes of the Corporation, and other the purposes of the Municipal Corporations Acts, provided that such last mentioned lands, tenements and hereditaments shall not exceed in the whole in value £10,000 by the year according to the values of the same at the time or times when they shall be respectively taken or acquired.

3.—The Mayor, Aldermen and Burgesses of the said Borough shall have the powers, authorities, immunities and privileges usually vested by law in the Mayor, Aldermen and Burgesses of a Municipal Borough, and the provisions of the Municipal Corporations Acts shall extend to the said Borough and the Inhabitants thereof incorporated by this Our Charter.

4.—The number of the Councillors of the Borough shall be eighteen.

5.—The Borough shall be divided into six Wards with the names, metes and bounds specified in Part II. of the First Schedule to these Presents.

6.—Each of the Wards shall elect three Councillors.

7.—For the purpose of making the Municipal Corporations Act, 1882, applicable in the case of the first constitution of the Borough, and for the

purpose of bringing into full existence and activity the said Corporation and Borough, and completely carrying into effect the Incorporation by these Presents intended, and for all the necessary purposes for which We may lawfully make provision, We do hereby, so far only as regards the Register containing the names of the Local Government Electors for the Borough prepared in the present year, the first election of Mayor, Aldermen and Councillors, and first appointment of Town Clerk and Treasurer for the said Borough, and the matters connected therewith, fix and order direct and declare as follows :—

- (1) In the preparation of the Register of Electors in the year 1933, in pursuance of the Representation of the People Acts, so far as relates to areas included in the said Borough, it shall be competent to the Registration Officer to frame the Register in separate parts for each area which will become a registration unit as a consequence of the division by these Presents of the said Borough into Wards, and if the said Register so far as it relates to Local Government Electors is not so framed as to show the persons entitled to vote at an election to be held for any such Ward the said Registration Officer shall make such alteration or re-arrangement of the said Register as may be necessary for the purposes of such election.*
- (2) The Notice Board affixed near the outer door of the Council Offices, High Street, Dartford, shall be the place at which any list, notice or document required to be publicly exhibited, exposed or affixed is to be affixed.*
- (3) Both in relation to the matters aforesaid and also in relation to any such election as aforesaid which it may be necessary to hold before an election can be held wholly in accordance with the Municipal Corporations Act, 1882, John James Hurtley, of the Council Offices, Dartford, Solicitor, Clerk to the Urban District Council of Dartford, or in the case of his death, inability, refusal, or default, Ernest Alec Field, Assistant Clerk to the said Council, shall perform the duties of Town Clerk, and further, the said John James Hurtley or Ernest Alec Field (as the case may be) shall be for all purposes whatsoever Town Clerk of the said Borough and perform all duties which would be performed by the Town Clerk thereof under any law or statute*

until a Town Clerk has been duly appointed in accordance with the Municipal Corporations Act, 1882, and Alfred John Penney, of "Homewood," Miskin Road, Dartford, a Justice of the Peace for the County of Kent, or in the case of his death, inability, refusal or default, Alec Webb, of "The Gables," Dartford Heath, Dartford, a Justice of the Peace for the County of Kent, shall perform the duties of the Mayor and Aldermen respectively as Returning Officer, and of the Mayor as Summoner of the first meeting of the Council, and of the Mayor or Chairman of the meeting for the election of the Mayor and Aldermen, and the appointment of the Town Clerk and Treasurer, and all the said persons shall be substituted in the Municipal Corporations Act, 1882, for the said Town Clerk, Mayor, Aldermen and Chairman respectively, so far as relates to the matters aforesaid and the said persons shall have the like powers and perform the like duties and be subject to the like obligations and penalties in all respects as the officers or persons—whose duties they have under the directions aforesaid to perform by law respectively have to perform and are subject to.

- (4) The first meeting of the Council of the Borough shall be held at noon on the ninth day of November, One thousand nine hundred and thirty-three.*
- (5) The first Councillors of the Borough shall be elected on the first day of November, One thousand nine hundred and thirty-three, and the first Mayor and Aldermen on the ninth day of November, One thousand nine hundred and thirty-three.*
- (6) The years and days specified in the Second Schedule to these Presents shall be the years and days for the retirement of the first Mayor, Aldermen and Councillors, who shall retire in the manner and at the times therein designated.*
- (7) Subject to the provisions and directions of these Presents and the Schedules thereto the provisions of the Municipal Corporations Act, 1882 (so far as unrepealed) and the Acts amending the same and the existing law relating to the Registration of Local Government Electors and to Electors and Elections in Municipal Boroughs, shall apply*

to the Register of Electors, 1933, so far as relates to the Local Government Electors for the Borough and the nominations, elections and continuance in office of the first Mayor, Aldermen and Councillors and the appointment and continuance in office of the first Town Clerk and Treasurer, the first meeting of the Borough Council, and all matters and things touching and concerning the above; and the dates and times in the said Act mentioned in that behalf shall be (subject as aforesaid) the dates and times on at during within or for which the matters aforesaid and the various acts and things in relation thereto shall take place, be done, be estimated or be calculated.

8.—*Except so far as is necessary for carrying out the first election of Councillors for the Borough this Our Charter shall not come into effect, nor shall the Municipal Corporations Acts extend or apply to the Borough until the first meeting of the Council.*

FIRST SCHEDULE.

In this Schedule the expression "the deposited map" means the map on the scale of 25 inches to one mile marked "Dartford Incorporation Map showing the boundaries of the proposed Borough of Dartford, and of the Wards therein," one copy of which is deposited at the Office of the Privy Council and the other at the office of the Town Clerk of the Borough.

PART I.

DESCRIPTION OF THE BOROUGH.

The Borough shall comprise the Parish of Dartford, being the present district of the Urban District Council of Dartford.

The boundaries of the Borough are shown on the deposited map by a firm black line.

And should there be any discrepancy between the boundary or boundaries of any Ward or Wards as delineated on the deposited map and the boundary or boundaries of such Ward or Wards as described in this Schedule, the textual description in this Schedule contained shall prevail.

THE SECOND SCHEDULE.

<i>Persons to Retire</i>	<i>Date of retirement, subject to the provisions of the Municipal Corporations Act, 1882, Section 230</i>
<i>The first Mayor shall retire on ..</i>	<i>the 9th day of November, 1934.</i>
<i>The Councillor in each Ward who is elected by the smallest number of votes shall go out of office on ..</i>	<i>the 1st day of November, 1934.</i>
<i>The Councillor in each Ward who is elected by the next smallest number of votes shall go out of office on ..</i>	<i>the 1st day of November, 1935.</i>
<i>The remaining Councillor in each Ward shall go out of office on</i>	<i>the 1st day of November, 1936.</i>
<i>The one-half of the Aldermen who first go out of office shall be those who are elected by the smallest number of votes, and shall go out of office on ..</i>	<i>the 9th day of November, 1936.</i>
<i>The remaining one-half of the Alder- men shall go out of office on ..</i>	<i>the 9th day of November, 1939.</i>

NOTE.—If any Councillors in any Ward or any Aldermen have obtained an equal number of votes, or have been elected without a poll, so that it cannot be determined which of them has the smallest or next smallest number of votes, the Councillors or Aldermen who are to go out of office at the times above specified respectively shall be determined by lot by the Mayor or Chairman at the first or second meeting of the Council of the Borough.

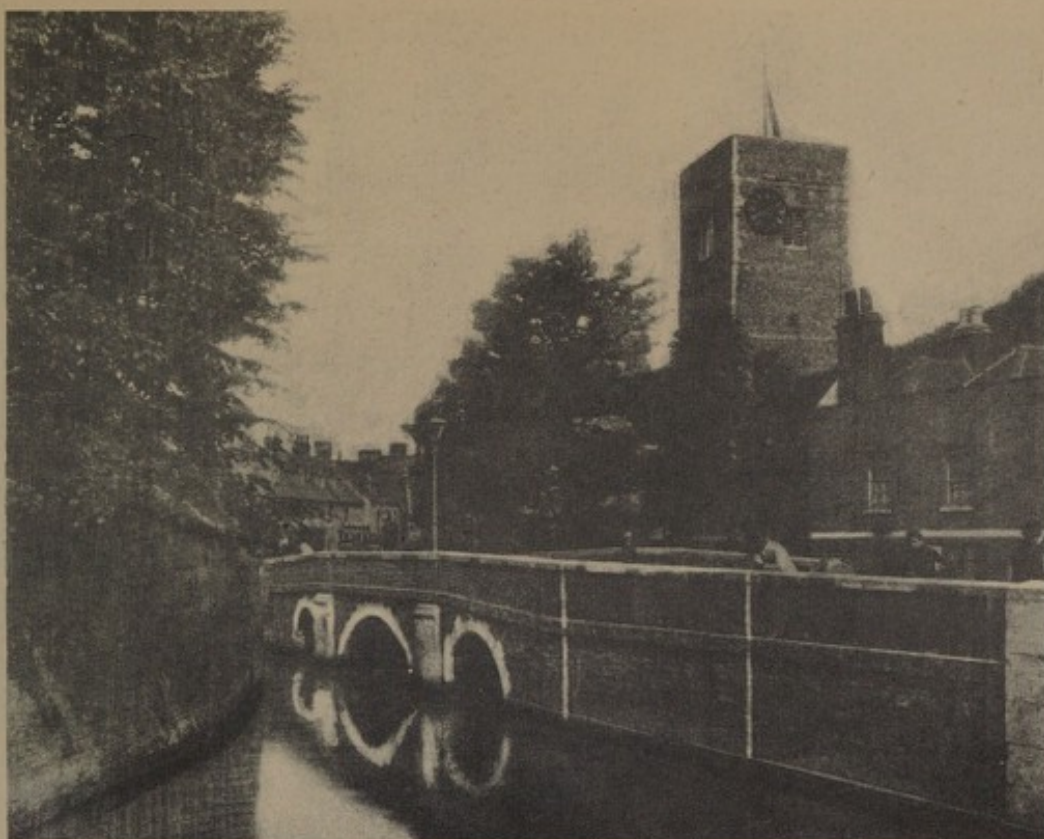
IN WITNESS whereof We have caused these Our Letters to be made Patent.

WITNESS Ourselves at Westminster the Twenty-fifth day of August in the twenty-fourth Year of Our Reign.

BY WARRANT under the King's Sign Manual.



SCHUSTER.



DARTFORD PARISH CHURCH AND TOWN BRIDGE.

BOROUGH OF DARTFORD.

THE granting of a Charter is an outstanding and important event in the history of a town, and provides yet another form of local government for this ancient town of Dartford. A Charter is a symbol of a procedure which has its roots in antiquity and is associated with ceremonials and traditions which are not merely superficial survivals of the past, but have a real value in marking the continuity of local government, and fostering the ambitions of local authorities so as to develop their administration that they may attain the status of a Chartered Borough.

Dartford has been created a Municipal Borough, and its inhabitants have been formed into a new body, politic and corporate, by the name of the Mayor, Aldermen and Burgesses of the Borough of Dartford, and the inhabitants of Dartford are for the first time associated with the title of the Governing body.

With the opening of this new chapter in the history of the town, it will be interesting to recall some of the forms of local government which did service, and some of the historical and industrial associations connected with it.



PUBLIC LIBRARY.

For many centuries Dartford was a typical manor and parish with all the simple occupations of farm life—a parish of slow, almost imperceptible, development. It was already centuries old at the time of the Domesday Survey, and during the Roman invasion the British leader Caswallon, in consequence of the defection of some of his allies, was compelled to retreat to his town and fortress, (the remains of which still exist about Dartford), in the centre of his own territories (the Cassii), where he was followed by Caesar and defeated. The British town of Cassii can now be traced extending into no less than five parishes, viz. :—Wilmington, Darenth, Bexley, Sutton-at-Hone and North Cray.

In 1235 Isabella, sister of Henry III, an English Princess, was married in Dartford to the Emperor Frederick II of Germany.

Rather more than a century later there were great happenings in the town to celebrate the military victories of Edward III in France.

The success of his armies had stimulated Edward's pious intentions, and he resolved to found a religious house in Dartford, which he did in 1355, when he founded a convent for Dominican nuns. Fragmentary remains of these buildings—a gate-house and south wing—may still be seen a short distance north-west of the railway station. They have now become the property of Messrs. J. & E. Hall, Ltd.



HESKETH PARK.

The Priory shared the common fate at the Dissolution, but its destruction was probably gradual and due, ultimately, as much to seekers after cheap building stone, as to the avaricious Henry. There are records of the King himself using the buildings as a palace at the period when Anne of Cleves was his queen, and in January 1540, Anne, on her journey from Deal to London for her wedding, slept at the palace, i.e. the former Priory.

Queen Elizabeth also stayed at "her own House at Dartford" in 1551 and 1573, on her way from Cobham to her palace at Greenwich.

Dartford played an important part in English history in connection with the Wat Tyler Rebellion of June, 1381. Tyler was a Dartford craftsman who had served in the French wars, and the Kentish men made him the leader of what has been called "The Peasant's Revolt" against unfair taxation. Tyler assembled his forces at Dartford and marched to London to see the King, but though he was successful in part, the rising resulted in his death, for he was slain by Walworth, the Lord Mayor of London, himself a Dartford man.

During the reign of Mary Tudor, Dartford was one of the many places at which martyrs suffered for conscience' sake, and the stake was set up at Dartford Brent, about three-quarters of a mile out of the town, along Watling Street. Here, on 17th July, 1555, Christopher Wade was burnt as a heretic "mightily



THE COUNTY SCHOOL FOR GIRLS.

admonishing the people to beware of false doctrine," as the flames attacked him. The memory of Wade and other Kentish martyrs is preserved by a monument erected in the old burial ground on East Hill, which was the site of an ancient chapel of St. Edmund the Martyr, which had been of great repute as a place of pilgrimage in pre-Reformation times.

No record of a town's history can be complete without reference to its Industries, and the story of the development of Dartford's industries is peculiarly interesting. Even in the Stone Age the district was a busy manufacturing and agricultural area, where weapons and tools were made, and crops raised, and throughout the centuries that have since passed it has never ceased to be prominent in its service to the world in which it now holds a foremost place for the value of its products to humanity. The pioneer of paper-making in England was Sir John Spielman, whose monument may be seen in the old parish church.

Sir John was jeweller to Queen Elizabeth, but after experiments in paper production during the second half of the sixteenth century, he established at Dartford the first English paper mill to make "whyte wrytynge" paper, and so laid the foundations of an industry which has been closely identified with the town ever since, and which, in its wider results, has proved one of the most potent agencies in the spread of education and the conduct of modern life.



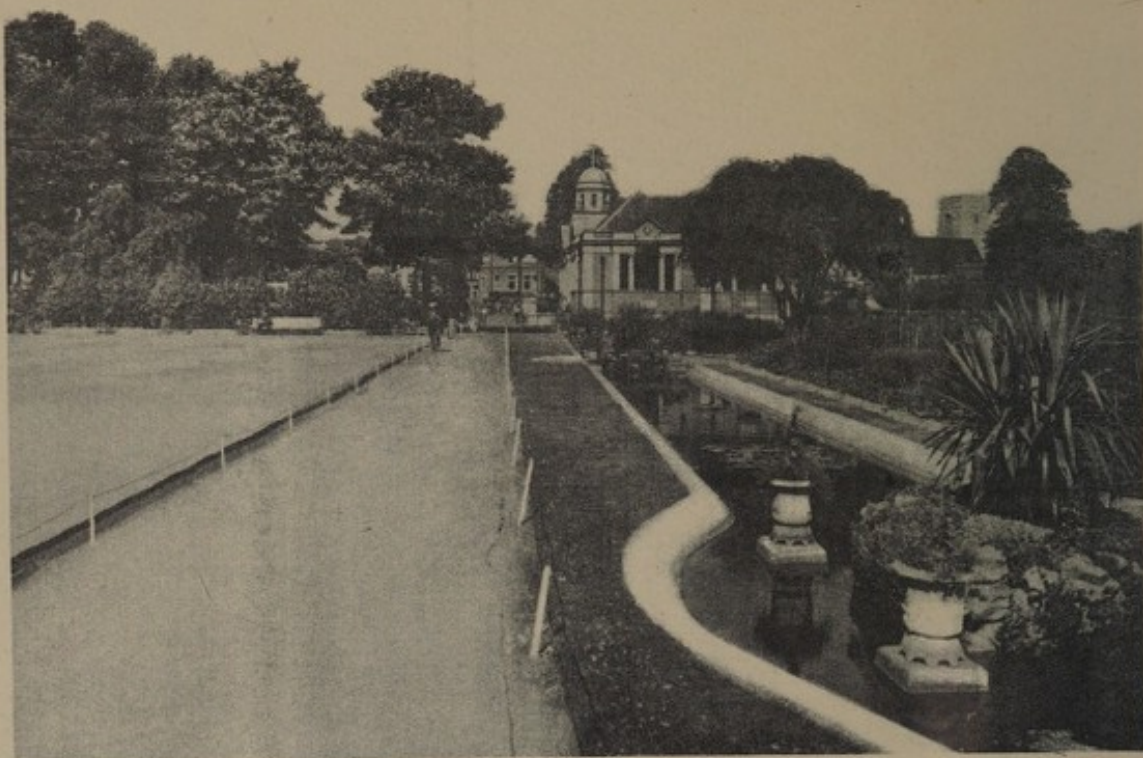
DARTFORD GRAMMAR SCHOOL.

Almost at the same period another important industry had its birth, so far as England was concerned, in Dartford, the process of rolling iron being introduced by a Belgian named Godfrey Box, and it is significant that now, four hundred years afterwards, a new Industry is established in Dartford which hitherto has been regarded as a continental monopoly, viz. :—the manufacture of grease proof paper.

Dartford comes prominently into the early history of the locomotive engine, as the home during his latter years of Richard Trevithick, who, though less known than George Stephenson, achieved world-wide distinction in the development of the high pressure steam engine for many purposes, and foreshadowed many of the uses to which it has been put. Trevithick died at Dartford in 1833, three years after the opening of the second railway—that from Liverpool to Manchester—and was buried in the East Hill Burial Ground.

Another pioneer connected with Dartford was Augustus Applegarth, the inventor of the first rotary printing press and of a number of improvements in colour printing and the manufacture of bank notes. He was a resident of Dartford for many years, and died here in 1871.

It has been already said that Dartford was for many centuries a typical manor and parish, and during those centuries it was, of course, subject to manorial and



CENTRAL PARK.

parochial government, with its varying influences upon its progress.

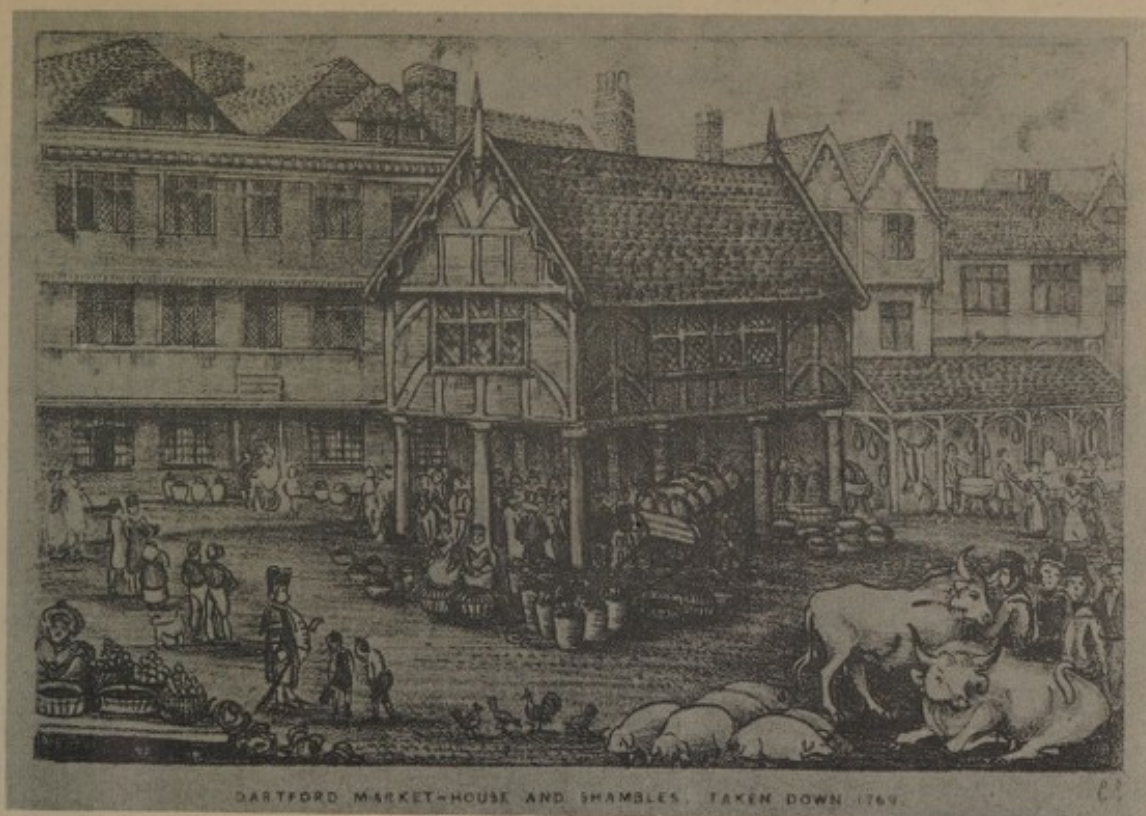
But with the passing of years, the time came when more adequate and efficient control became necessary for the local government of the town.

In June, 1814, an Act of Parliament was passed (54 Geo. III) entitled "An Act for Lighting, Watching and Improving the town of Dartford in the County of Kent," under which Commissioners were appointed to carry out the purposes of the Act.

By the Public Health Act 1848, Dartford was constituted a local government district in 1850, with a local board consisting of nine members.

In the year 1894, Dartford became an Urban District under the provisions of the Local Government Act, 1894, and the number of members of the Council was increased from nine to fifteen, by an Order of the Kent County Council.

The Charter creating Dartford a Municipal Borough, divides the district into six wards to be named Priory Ward, Heath Ward, Highfield Ward, Town Ward, St. Alban's Ward and Brent Ward, and each Ward will be represented on the Borough Council by three Councillors, and in addition the Council will elect six Aldermen, thus increasing the members of the Council from fifteen to twenty-four.



The growth and population and rateable value of Dartford has been gradual, and there can be no doubt that with the electrification of railways and the increasing ease of road transport, it will be greater and more rapid in the future. The 1931 census population was 28,871, and the Registrar General's estimate of the present population is 29,290. The established population of the town within its official or parish boundary is, however, by no means a true index of the size and importance of the town, for it can be truly said that the Borough is the administrative centre of a large area beyond its own borders for judicial, educational, shopping, and in respect of many other services.

The rateable value of Dartford on the 1st August, 1933, was £204,264.

The Borough forms part of the Dartford Parliamentary Division of the County of Kent. On the register for 1932 there are 17,359 parliamentary electors and 12,545 local government electors in the Borough.

The Borough is included in the Petty Sessional Division of Dartford in the administrative County of Kent. It is the largest Petty Sessional Division in the County, and comprises in addition to the Borough, the parishes in the Dartford Rural District and three Urban Districts within the Metropolitan Police area. The Police Station and Police Court are situate in the Borough.

The Dartford County Court circuit comprises the Borough, the Urban

Districts of Bexley, Crayford, Swanscombe and Erith, and the parishes in the Dartford Rural District, and the County Court is situate in the Borough.

Dartford is the centre of a large area for secondary education purposes, the Dartford Grammar School, (which was founded in 1576), the County School for Girls and the Dartford Technical College providing education for students resident within and outside the Borough.

In 1902, the Urban District Council of Dartford acquired the market rights and undertaking from Lord Tredegar, the Lord of the Manor. The Market is one of the oldest in the County, having existed since Saxon times.

For poor law purposes, the Borough is within the area of the Dartford and District Sub-Committee of the Public Assistance Committee of the County of Kent, which contains twenty parishes, and it has three representatives on the Guardians' Committee. The rateable value of the entire area on the 1st April, 1933, was £997,746.

The Borough is one of the constituent authorities of the West Kent Main Sewerage Board, being represented on the Board by three members.

The district is exceptionally well supplied with recreation facilities, the parks and open spaces under the control of the Borough comprising no less than 377 acres, facilities being provided for Cricket, Lawn Tennis, Golf Putting Greens and Bowls. The Manorial rights over Dartford Heath Common were acquired from Lord Tredegar in 1925, and being within easy access, the Common affords ample facilities for sports and recreation for the inhabitants of the Borough and surrounding districts.

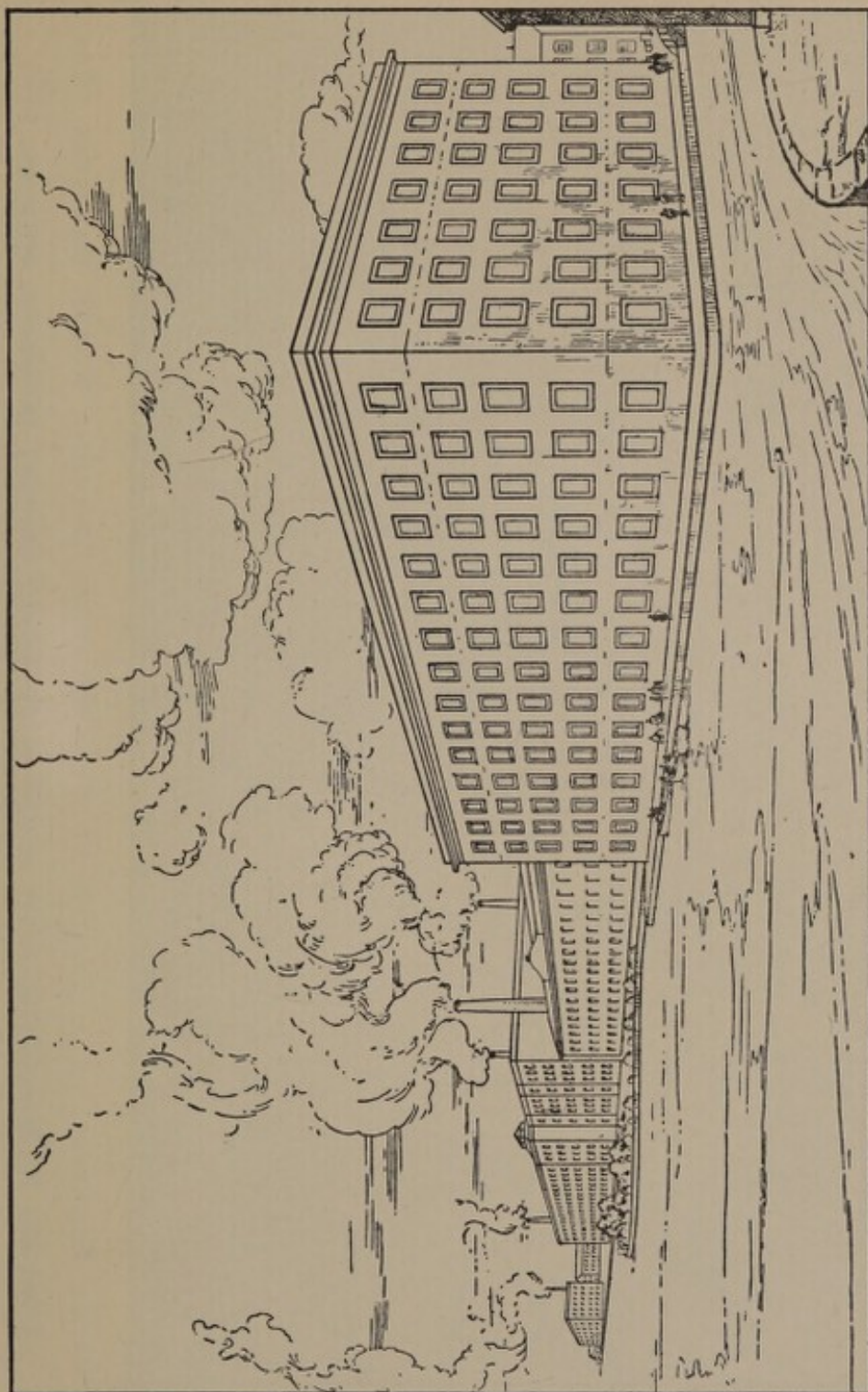
It is not remarkable that the Health Statistics of the Borough are such as to entitle the Council to congratulate itself upon its activities in the matter of Public Health services, for recreation and open spaces are a big factor in public health. In 1931, no Borough in the County of Kent had a lower death rate than Dartford, which had the lowest death rate from Cancer of any Borough or Urban District in the County of Kent.

The Council have carried out excellent work to safeguard the interests of the child and the expectant mother, and in connection with this work they have organised various schemes, including dental, orthopaedic service and treatment for ophthalmia neonatorum, puerperal fever and other cases requiring special attention. The number of attendances of mothers at the Child Welfare Clinic in 1922 was 5,174 and in 1931 10,611.

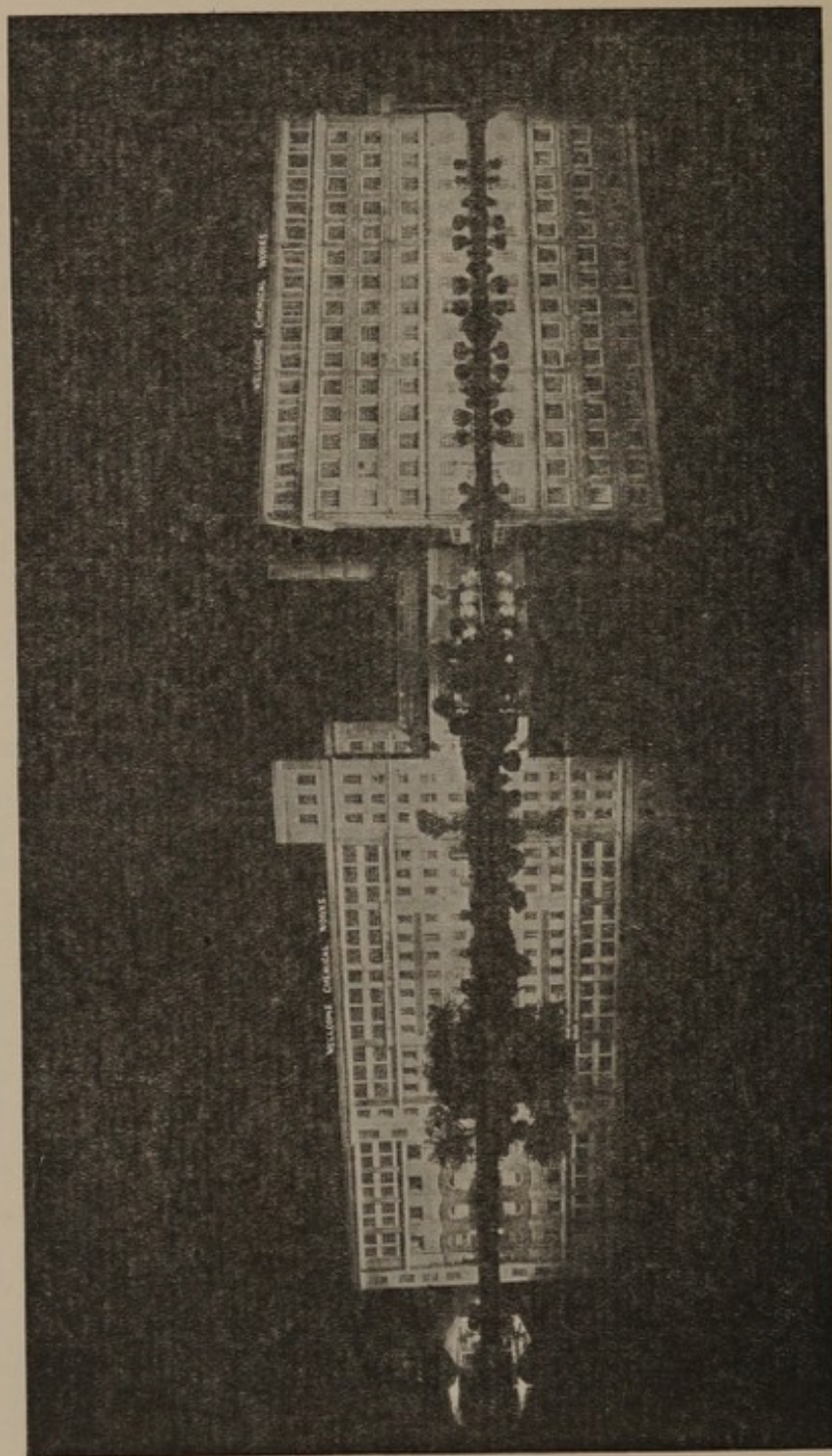
The Borough Council are represented by three members on the Bow Arrow Joint Hospital Committee, the proportion of assets and liabilities of the Hospital allocated by Agreement to the Borough being 29 per cent.

The Dartford Burial Board was constituted in 1855 and the Borough Council, as the successors of the Urban District Council of Dartford, are the Burial Authority for the district and control the Burial Grounds, known as East Hill and Watling Street Burial Grounds.

The Borough possesses an open-air Swimming Bath situate in Burnham Road, which was opened to the public in the year 1910, the Bath being well patronised by the public and Swimming Clubs. The Council have also provided



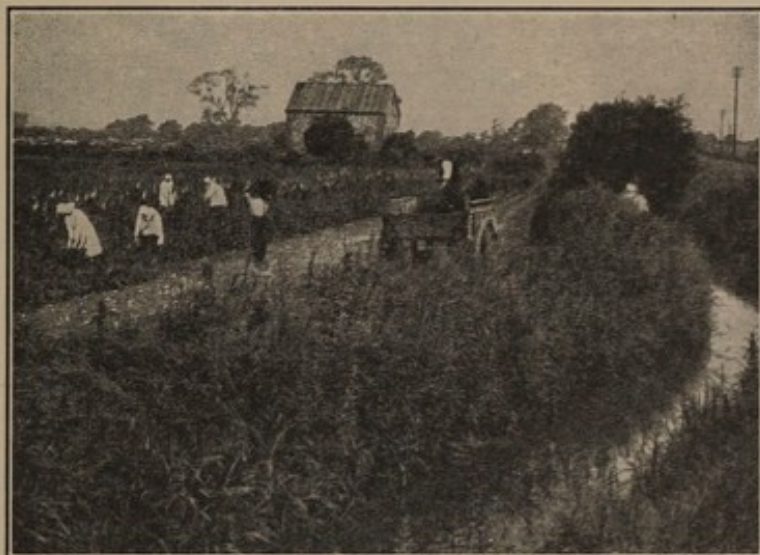
SECTION OF THE WELLCOME CHEMICAL AND GALENICAL WORKS, DARTFORD (ENG.)



WATER FRONTAGE OF A SECTION OF THE WELLCOME CHEMICAL WORKS, DARTFORD (ENG.)

Illuminated by Flood-lighting on the occasion of the Faraday Centenary Celebrations, September, 1931

SCENES ON THE WELLCOME MATERIA MEDICA FARM



GATHERING AND LOADING DIGITALIS



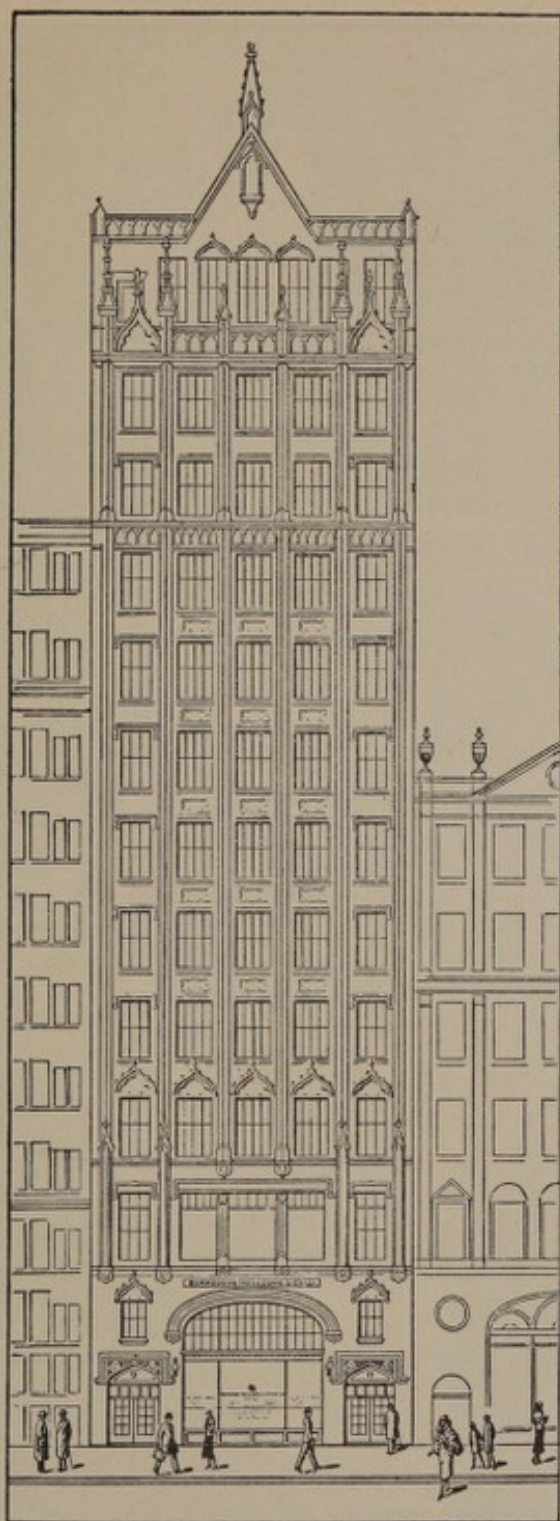
LIGHT RAILWAY TO WORKS

From photographs developed with 'TABLOID' 'RYTOL'

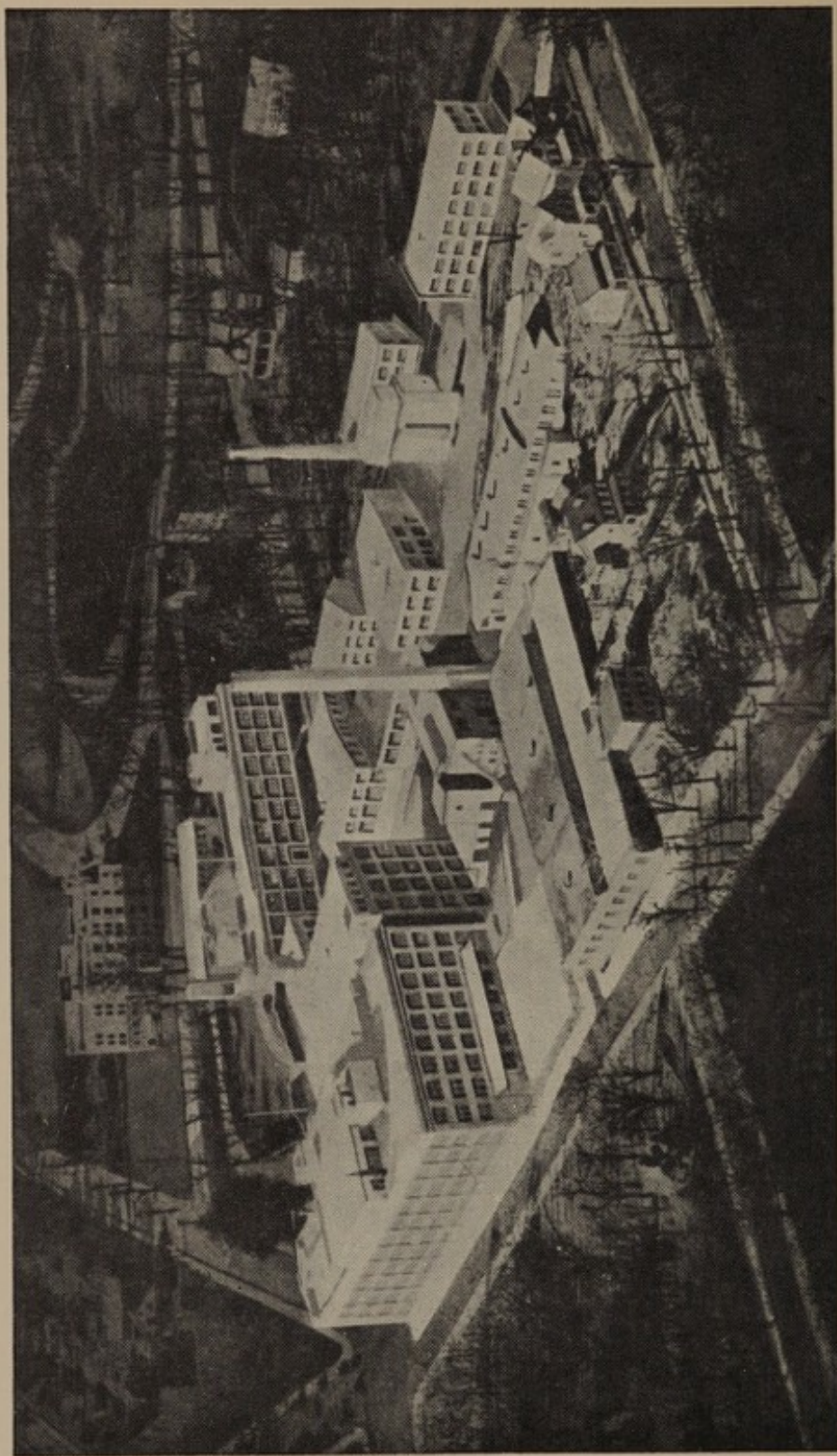


BURROUGHS WELLCOME & Co.
(THE WELLCOME FOUNDATION LTD.)

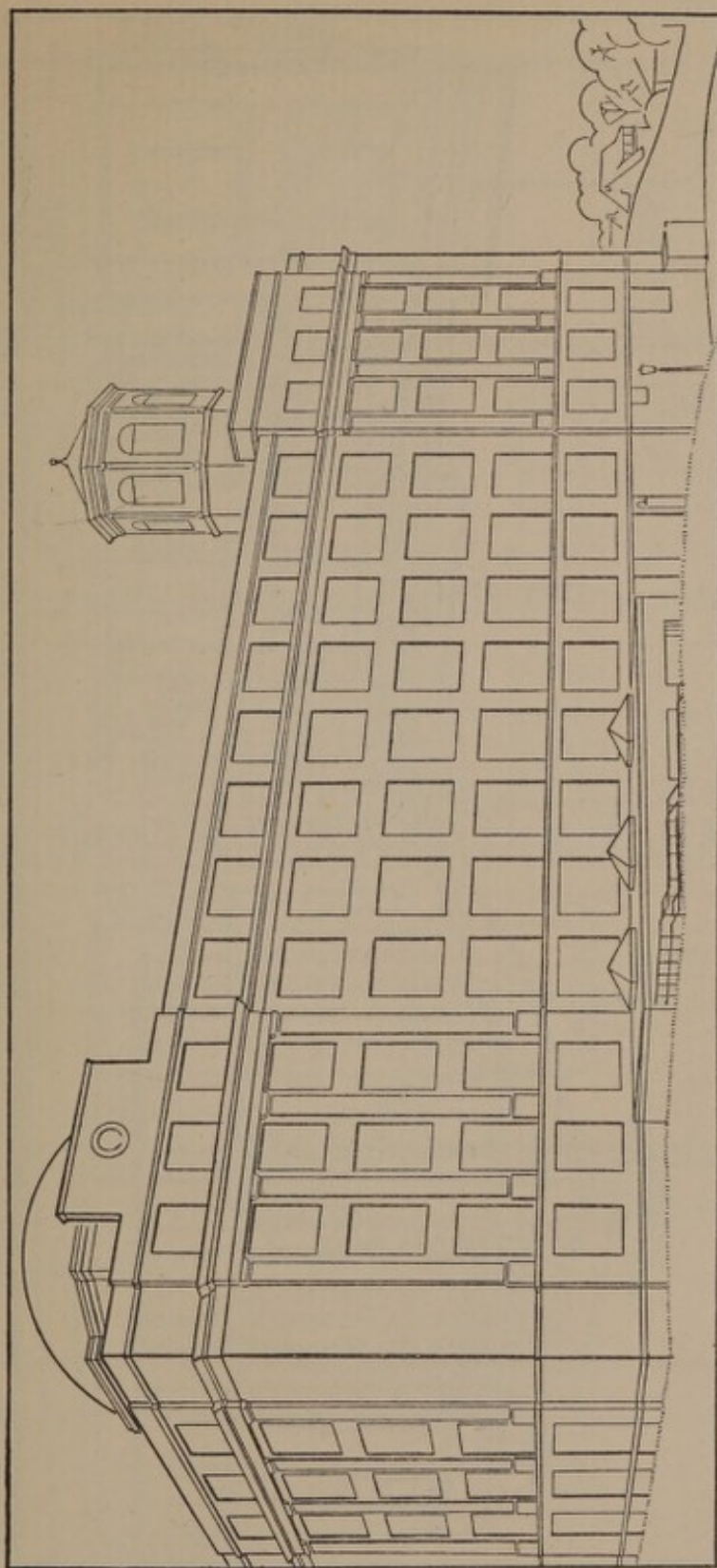
HEAD OFFICES: SNOW HILL BUILDINGS, LONDON, E.C. 1



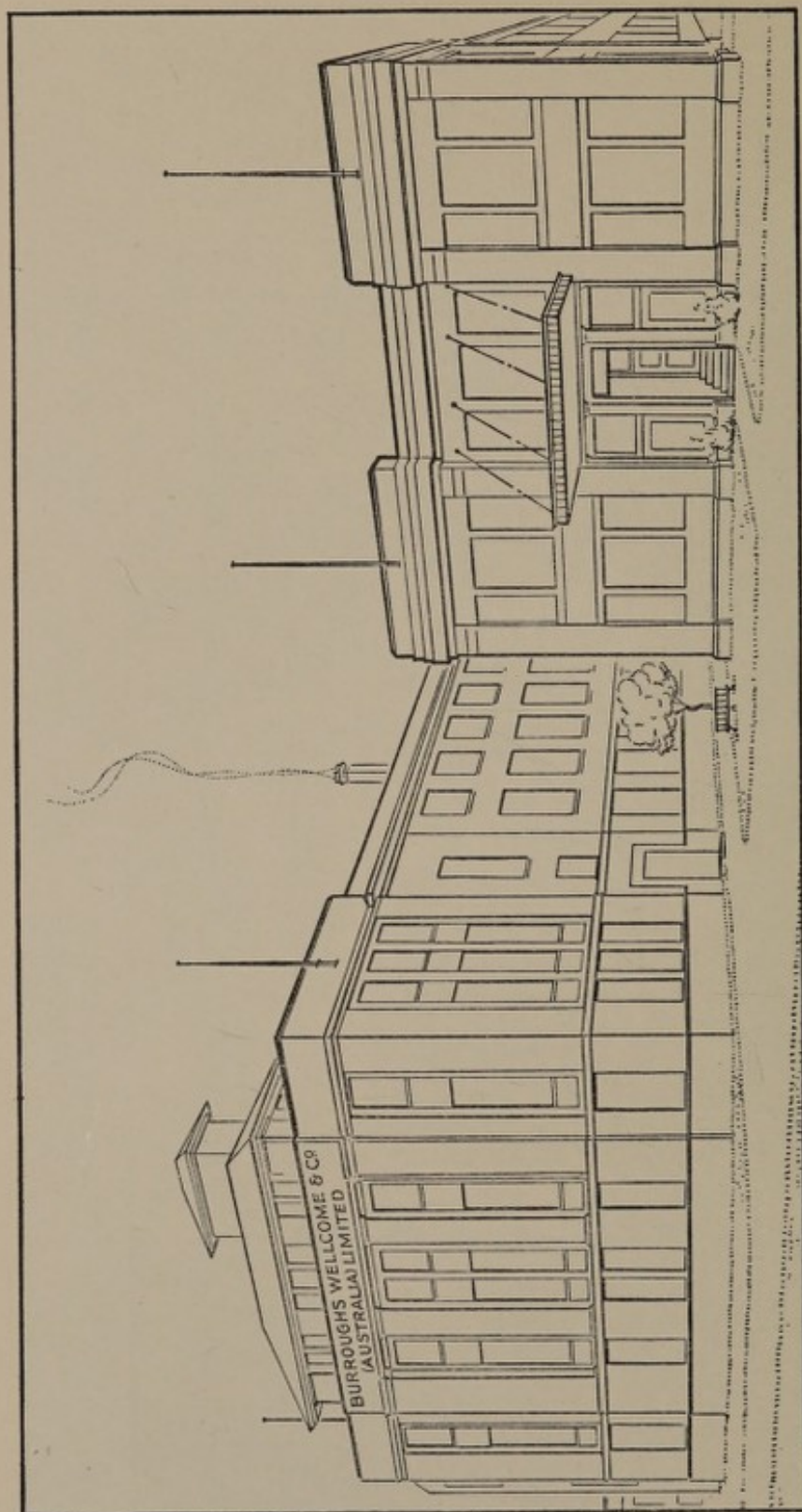
BURROUGHS WELLCOME & CO. (U.S.A.)
INC.
GENERAL OFFICES AND EXHIBITION ROOMS
WELLCOME BUILDING
NINE AND ELEVEN, EAST FORTY-FIRST STREET
NEW YORK CITY



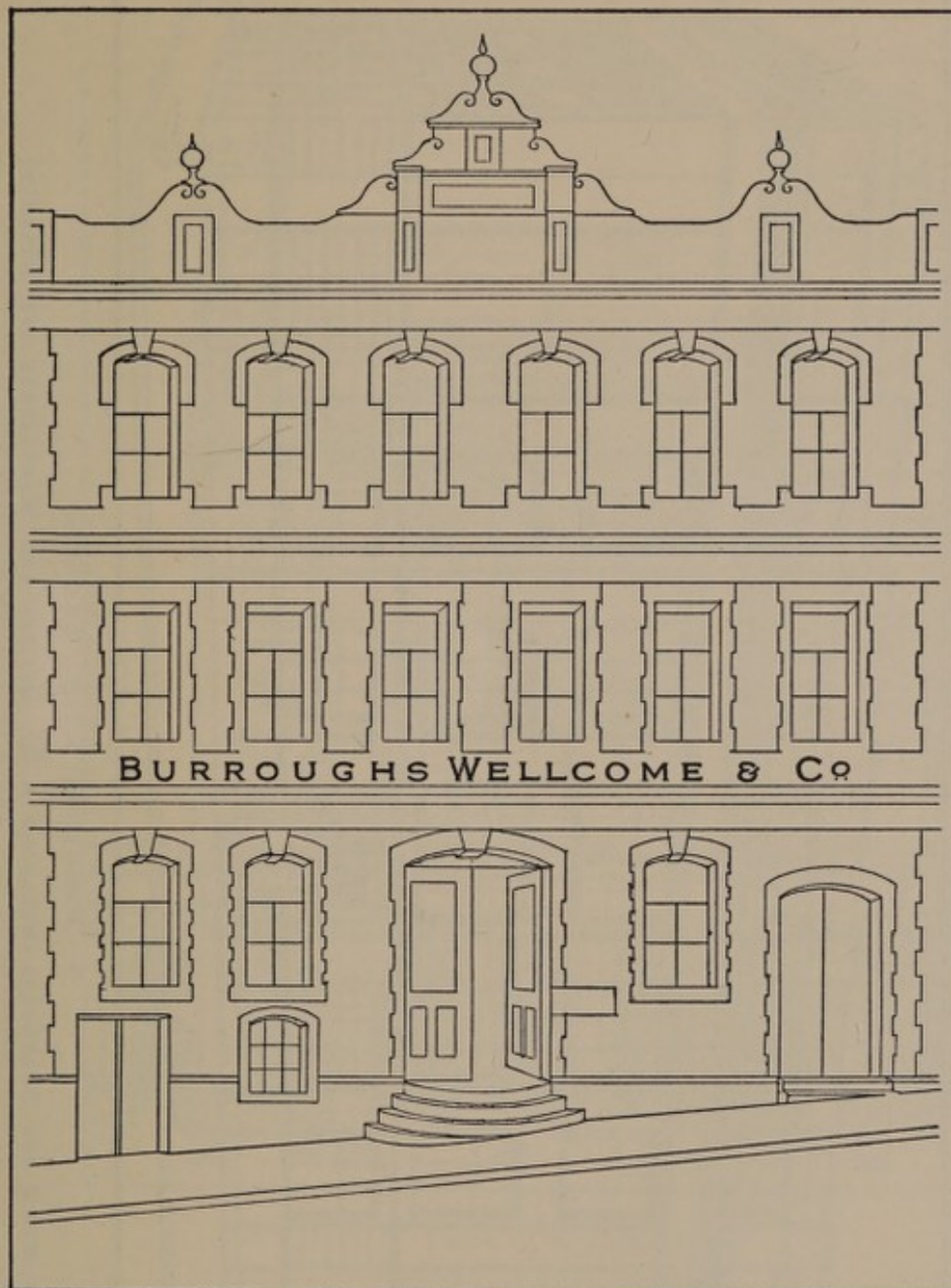
THE WELLCOME CHEMICAL AND GALENICAL WORKS AND EXPERIMENTAL RESEARCH
LABORATORIES, NEW YORK, U.S.A.



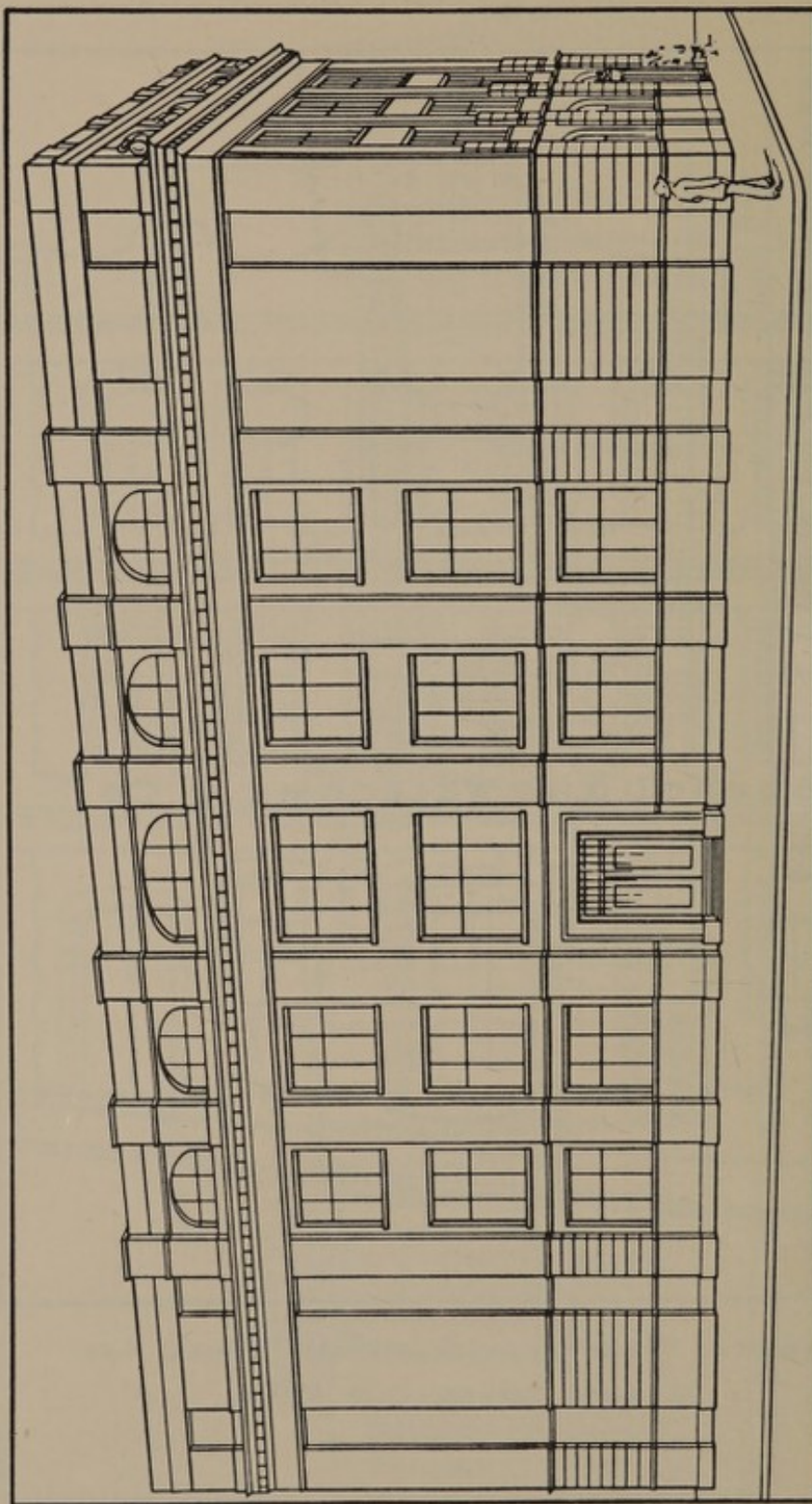
THE WELLCOME CHEMICAL AND GALENICAL WORKS AND LABORATORIES
VILLE LA SALLE, NEAR MONTREAL, CANADA



BURROUGHS WELLCOME & Co. (AUSTRALIA) LTD. OFFICES AND WORKS, SYDNEY, N.S.W.

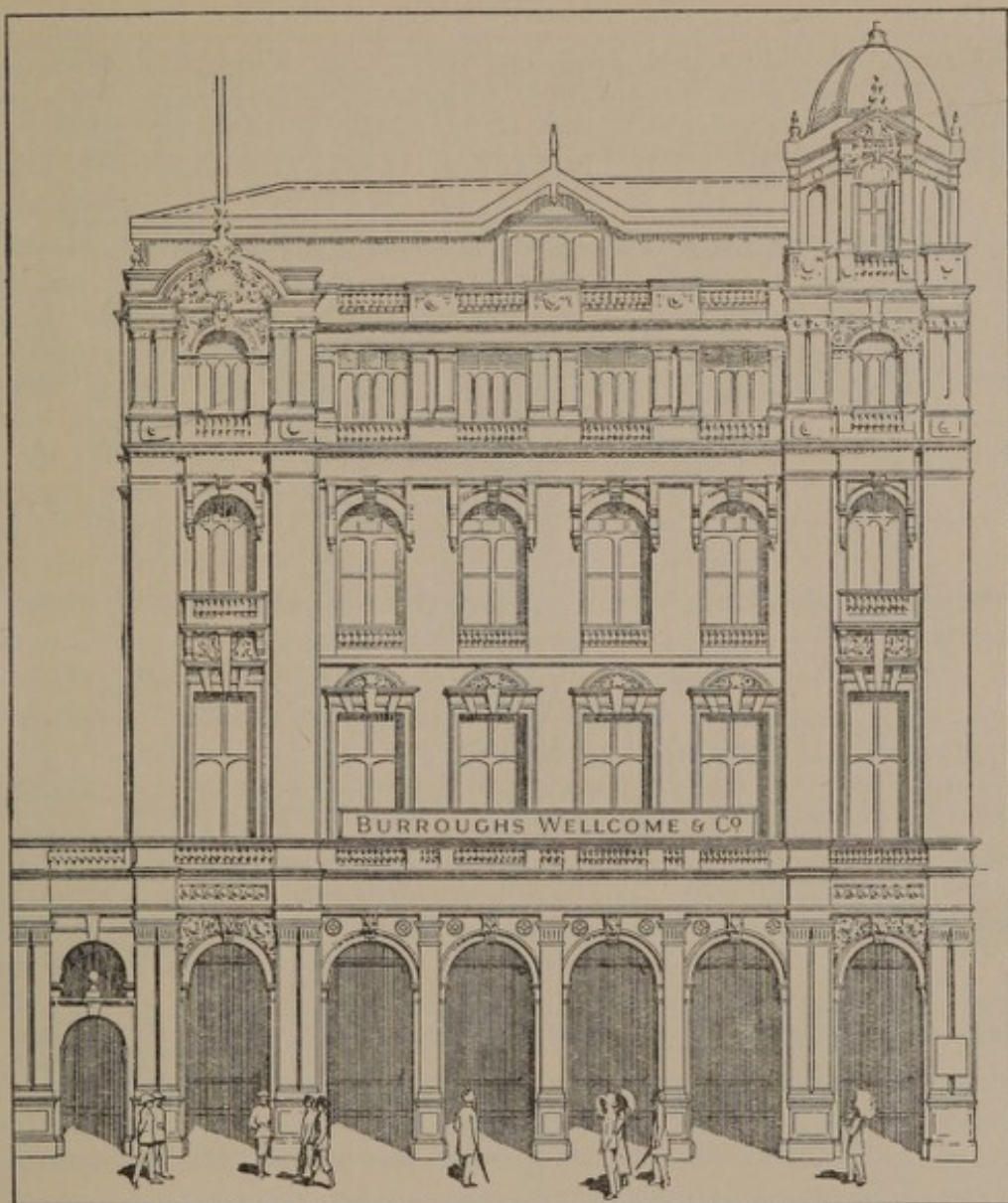


BURROUGHS WELLCOME & Co. (SOUTH AFRICA) LTD.
5, LOOP STREET, CAPE TOWN



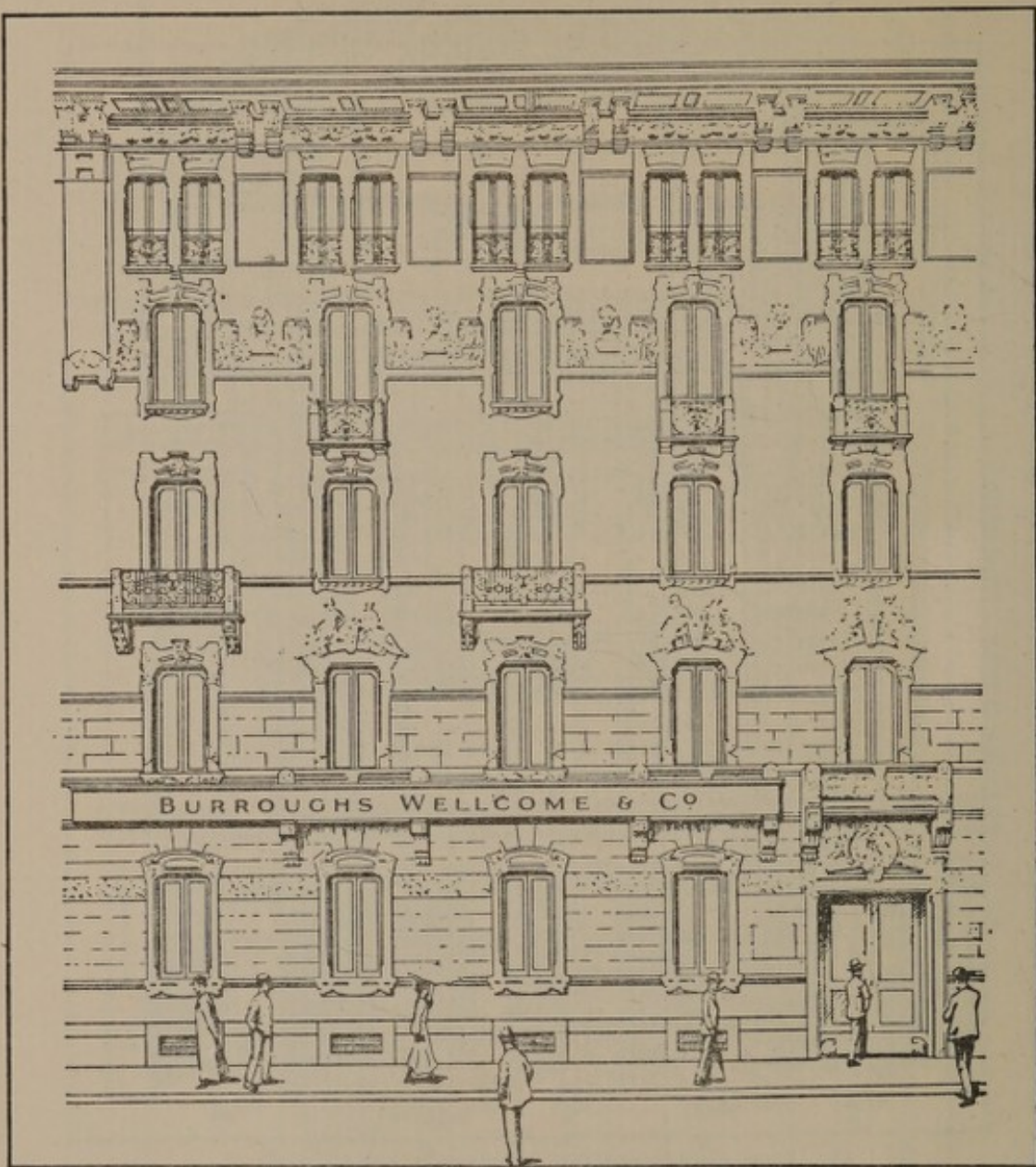
5, HONGKONG ROAD, SHANGHAI

(IN WHICH THE BURROUGHS WELLCOME & CO. OFFICES AND WAREHOUSES ARE SITUATED)



COOK'S BUILDING
HORNBY ROAD, BOMBAY

(IN WHICH THE BURROUGHS WELLCOME & CO. OFFICES AND WAREHOUSES
ARE SITUATED)



S. A. I. BURROUGHS WELLCOME & CO.

PRODOTTI FARMACEUTICI

26, VIA LEGNANO, MILAN

Slipper Baths in the centre of the Borough.

The Council possess a well equipped Fire Station, and have installed the most modern fire appliances in order to efficiently cope with fires within and outside the Borough.

Dartford, like other towns, has suffered from the shortage of houses, but the Council have made considerable progress in the erection of houses for the working-classes, the number already built being 999. The Lowfield Street and Heath Lane Housing Estates have been laid out in accordance with modern town planning principles.

In 1898 the Council obtained a provisional order to establish an electricity undertaking and the supply, which was commenced in 1901, has been maintained uninterruptedly since that date, the undertaking making steady progress since its inception. In 1919 the capital outlay on the undertaking amounted to £69,000, and the output at that time was about 2,000,000 units. By the end of 1931, the capital outlay had increased to £122,000, and the output to 9½ million units. A 10,000 volt 3-phase ring main has been constructed near the outer boundaries of the Borough, and five sub-stations have been completed on the ring main, for the purpose of augmenting the existing supply and for supplying electricity to entirely new and remote areas lying on the western boundaries of the Borough.

The Dartford Light Railways, authorised to be constructed by the Dartford Light Railway Order, 1902, were transferred to the London Passenger Transport Board, established under the London Passenger Transport Act, 1933, on the 1st July, 1933, and are now being operated by the Board.

The Public Libraries Act, 1892, was adopted by the Council in 1913, and the Library and Museum are housed in a building erected in the Central Park at a cost of £7,400, which was defrayed by a gift from the late Dr. Andrew Carnegie. The building was opened on 1st January, 1916, with a stock of 6,300 volumes. The stock has increased to 29,200 volumes, and the number of books annually issued from the Library has reached the figure of 262,000, which are available to residents residing outside, as well as within, the Borough.

Such are a few of the facts of which the Burgesses of Dartford are justly proud.

Dartford is still in the making, and by the granting of the Charter of Incorporation a new and wide avenue has been opened along which she may pursue her glorious way with the new opportunities which lie before her.

The Charter is an expression of the confidence of His Majesty the King and his Counsellors in her and Dartford will be worthy of the trust placed in her.

Unity of purpose and singleness of aim will ensure her progress, if combined with industry, and her future is assured.

Her past history has been honourable, but the history which she has begun to make to-day will be glorious if, in the years to come, she regards her Charter as

"A crown

*"Which rightly worn will added lustre bring
"If Dartford in her progress, seeks renown
"In honouring God, the Empire and her King."*

CORPORATION REGALIA AND GIFTS TO THE TOWN.

THE MACE.

A silver gilt Mace 3 ft. 6 in. long, embellished with the new armorial bearings of the Corporation, and inscribed :—

“PRESENTED BY MR. ALDERMAN A. J. PENNEY, J.P., (CHARTER MAYOR) ON THE OCCASION OF THE INCORPORATION OF THE INHABITANTS OF DARTFORD BY THE NAME OF THE MAYOR, ALDERMEN AND BURGESSES OF THE BOROUGH OF DARTFORD. SEPTEMBER, 1933.”

THE MAYOR'S CHAIN OF OFFICE.

The Chain and Badge both of 14 carat gold, the centre feature of the Badge containing the beautifully modelled Arms of the Borough, richly enamelled in correct heraldic colours and inscribed :—

“PRESENTED BY MR. ALDERMAN A. J. PENNEY, J.P., (CHARTER MAYOR) FOR USE BY SUCCESSIVE MAYORS OF THE BOROUGH OF DARTFORD. INCORPORATED 1933.”

THE INSIGNIA OF OFFICE OF THE MAYORESS.

The Mayoress's Chain of 14 carat gold is a small replica of the Mayor's Badge, supported by a “dress” chain of suitable size. At the back of the badge is the inscription :—

“PRESENTED BY MR. ALDERMAN A. J. PENNEY, J.P., (CHARTER MAYOR) FOR USE BY SUCCESSIVE MAYORESSES OF THE BOROUGH OF DARTFORD. INCORPORATED 1933.”

DISTINGUISHED VISITORS BOOK.

In full persian calf with the Borough Arms in gilt on the cover. The title page bears the following :—

BOROUGH OF DARTFORD.

INCORPORATED 1933.

DISTINGUISHED VISITORS BOOK.

(PRESENTED BY THE ROTARY CLUB OF DARTFORD).

The Charter Mayor has provided the Robe for use by the Mayor for the time being of the Borough.

The Deputy Charter Mayor (Mr. Councillor Alec Webb, J.P.) has presented the Robe for the Deputy Mayor for the time being of the Borough.

W. F. Blay, Esq., C.C., has presented a Robe and Wig to the Charter Town Clerk.

Mabie Todd & Co., Ltd., have presented a Gold Swan Fountain Pen for use by the Mayor and by distinguished Visitors when signing the Visitors Book.

LIST OF CHAIRMEN OF DARTFORD URBAN DISTRICT COUNCIL.

C. N. KIDD, J.P.	1894-1903.
S. KILWORTH KEYES	1903-1905.
J. LAWRENCE MITCHELL, J.P., C.A.	1905-1907.
ALFRED J. PENNEY, J.P., C.A.	1907-1909.
WM. JAS. DAVIS	1909-1911.
FREDK. STANLEY PUTLAND, J.P.	1911-1913.
WALTER EDW. GOFF	1913-1915.
ARTHUR WM. SMALE	1915-1917.
ROBERT BENNETT	1917-1919.
WILLIAM A. WARD	1919-1921.
J. B. WALTON	1921-1923.
Lieut.-Col. LORD DUDLEY GORDON, D.S.O.	1923-1924.
W. F. BLAY, C.C.	1924-1926.
W. L. PARRY, B.Sc.	1926-1928.
E. R. BLACKMAN, J.P.	1928-1930.
JOSEPH WHITE...	1930-1931.
ALEC WEBB, J.P.	1931-1933.

Wellcome Library
for the History
and Understanding
of Medicine

*Published by
The Urban District Council of Dartford,
and printed and produced in Dartford by
H. G. Ellis & Son,
Home Orchard Works,
Hythe Street,
Dartford.*

