

## **Rural cottage competition.**

### **Contributors**

Great Britain. Department of Health for Scotland.

### **Publication/Creation**

Edinburgh : H.M. Stationery Off, 1938.

### **Persistent URL**

<https://wellcomecollection.org/works/bqap7322>

### **License and attribution**

This work has been identified as being free of known restrictions under copyright law, including all related and neighbouring rights and is being made available under the Creative Commons, Public Domain Mark.

You can copy, modify, distribute and perform the work, even for commercial purposes, without asking permission.



Wellcome Collection  
183 Euston Road  
London NW1 2BE UK  
T +44 (0)20 7611 8722  
E [library@wellcomecollection.org](mailto:library@wellcomecollection.org)  
<https://wellcomecollection.org>

Class No. FC/48

Acc. 4018

Department of Health For Scotland  
Plans and Designs - Rural Cottage  
Competition.

1938

7 sheets

Price 7/6 the  
set.

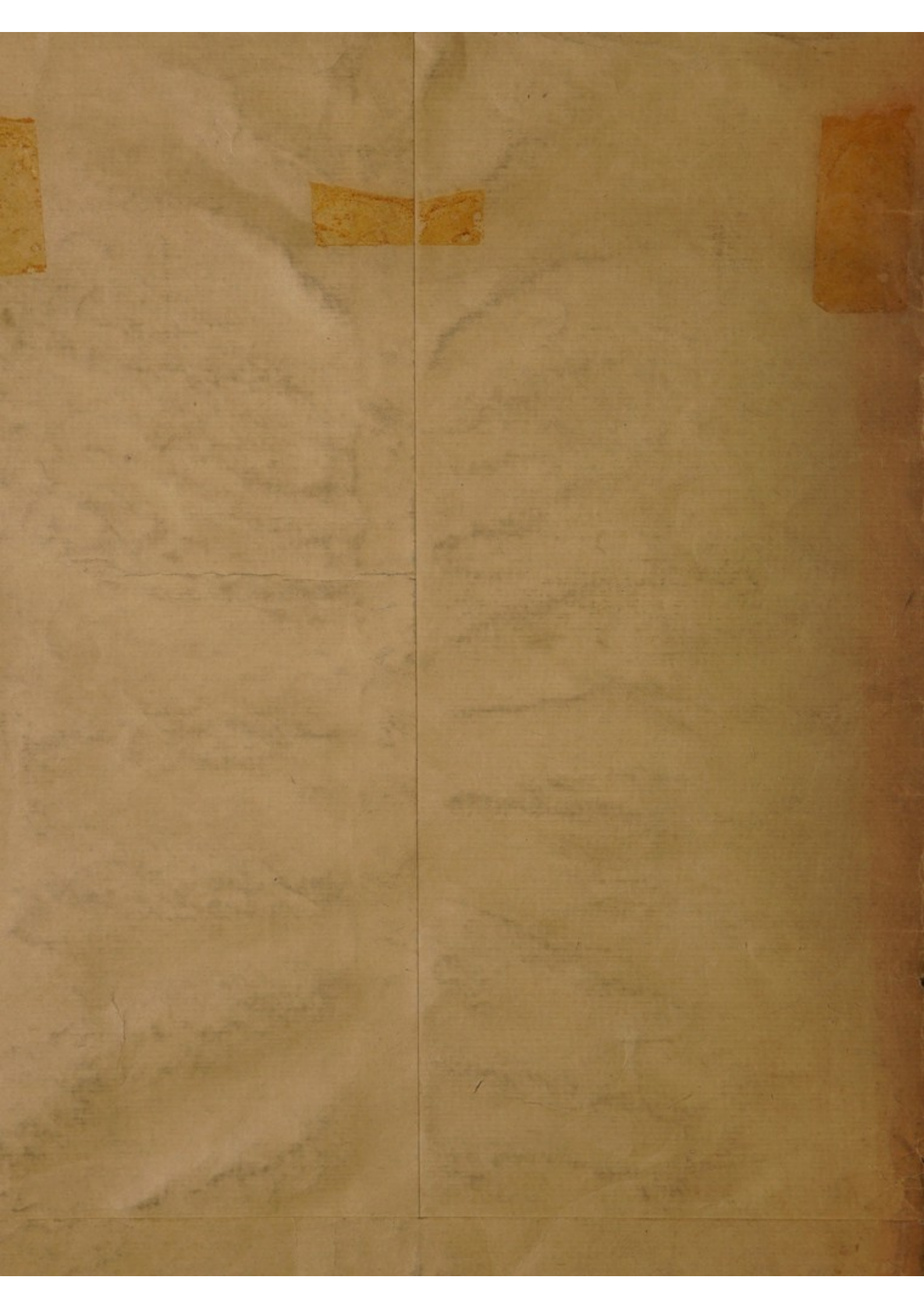
THE ROYAL SANITARY INSTITUTE,  
90, Buckingham Palace Road, S.W. 1.

WELLCOME INSTITUTE LIBRARY	
Coll.	welMOMec
Call	See back of
No.	plan 1



22200094490

THE ROYAL SANITARY INSTITUTE  
90, Buckingham Palace Road, S.W. 1.

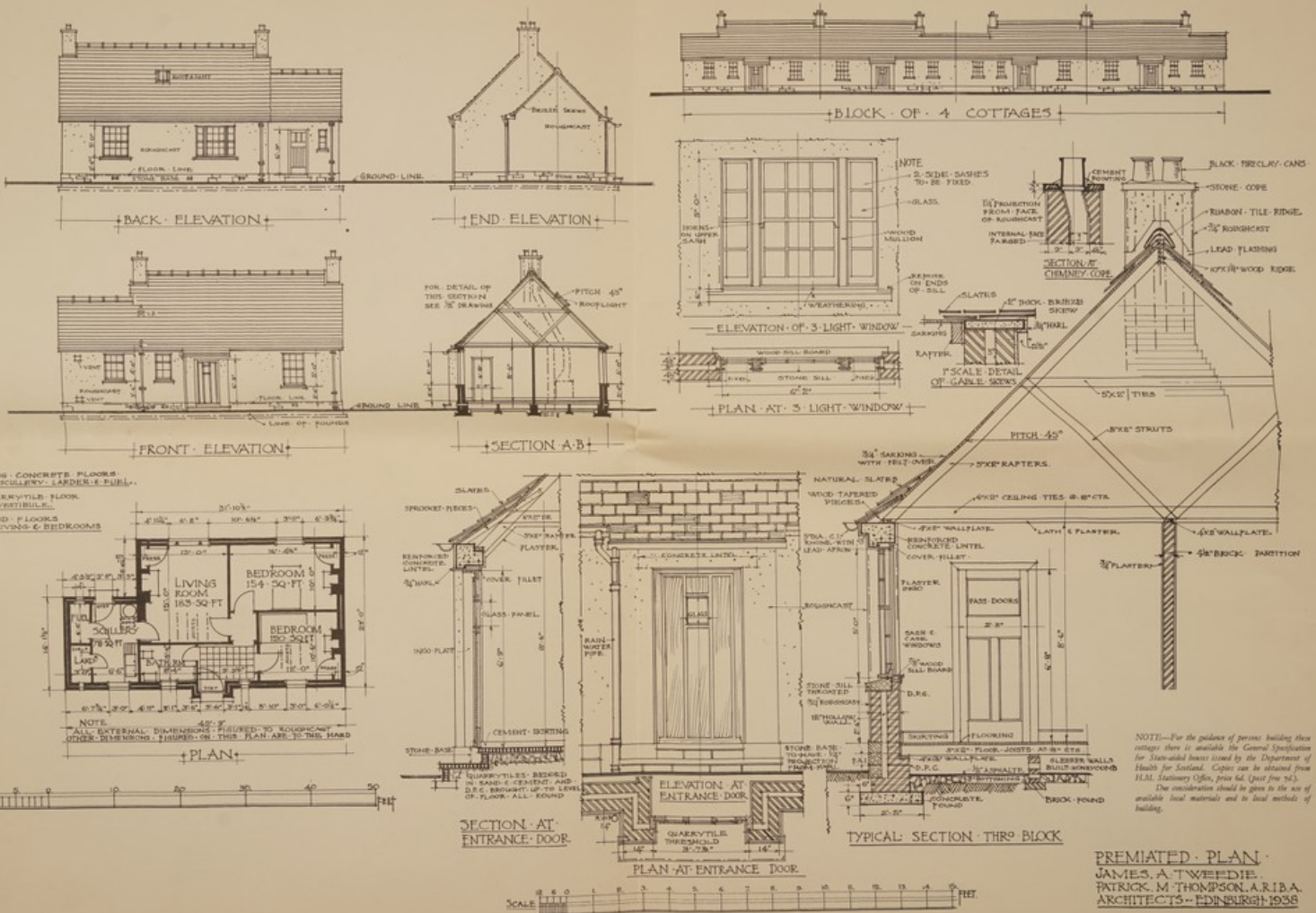




# RURAL COTTAGE COMPETITION

## SINGLE-STOREY THREE-APARTMENT COTTAGE

No. 1



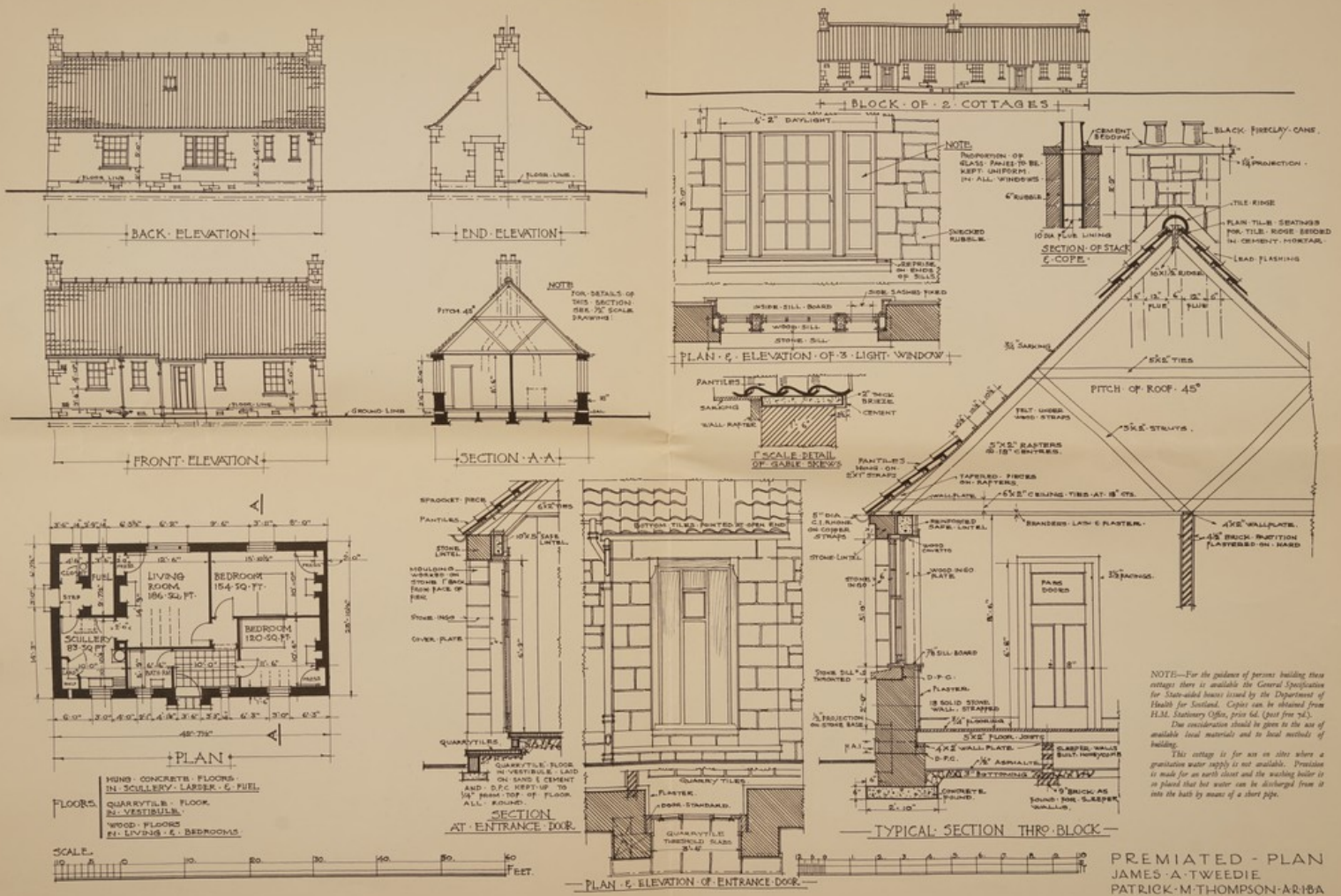


# RURAL COTTAGE COMPETITION

No. 1a

## SINGLE-STOREY THREE-APARTMENT COTTAGE

(For use on sites where a gravitation water supply is not available)



PREMIATED - PLAN  
 JAMES A. TWEEDIE  
 PATRICK M. THOMPSON-ARIBA  
 ARCHITECTS - EDINBURGH - 1938





# RURAL COTTAGE COMPETITION

No. 2

SINGLE-STOREY FOUR-APARTMENT COTTAGE



FRONT ELEVATION.



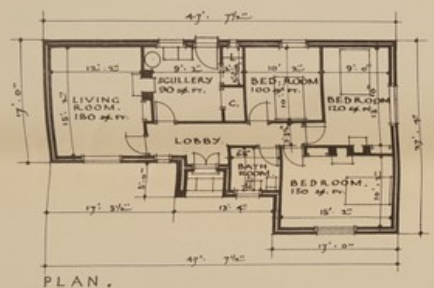
SECTION.



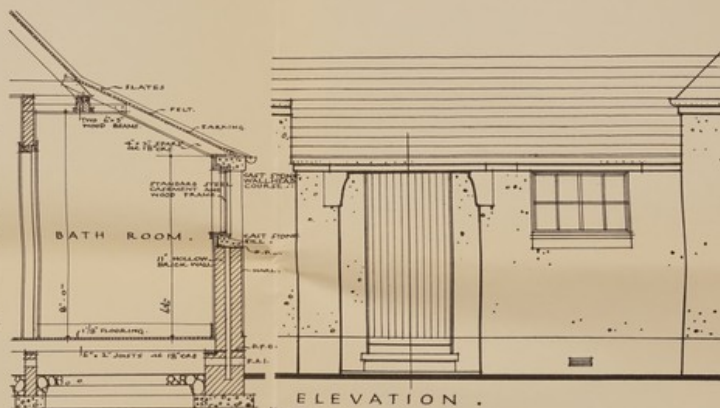
BACK ELEVATION.



SIDE ELEVATION.

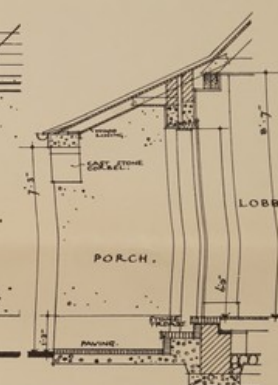


PLAN.



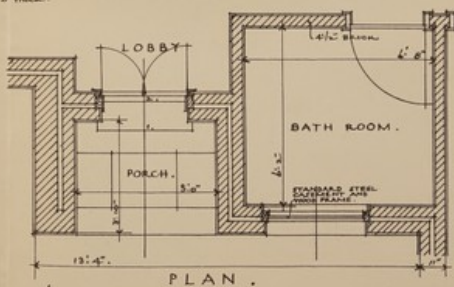
SECTION.

ELEVATION.



SECTION.

HALF INCH SCALE DETAILS OF ENTRANCE PORCH ETC.



PLAN.

NOTE—For the guidance of persons building these cottages there is available the General Specification for State-aided houses issued by the Department of Health for Scotland. Copies can be obtained from H.M. Stationery Office, price 5d. (post free 7d.). Due consideration should be given to the use of available local materials and to local methods of building.

PREMIATED DESIGN BY  
*Wm. S. B. ARJBA*  
 ARCHITECT,  
 STATION ROAD,  
 BARRY, ANGLS.



GROUP OF TWO COTTAGES.



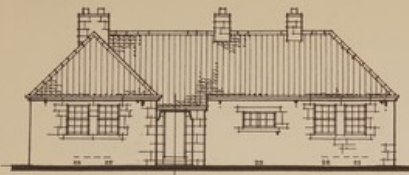


# RURAL COTTAGE COMPETITION

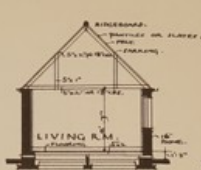
## SINGLE-STORY FOUR-APARTMENT COTTAGE

(For use on sites where a gravitation water supply is not available)

No. 2a



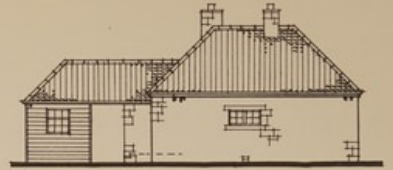
FRONT ELEVATION.



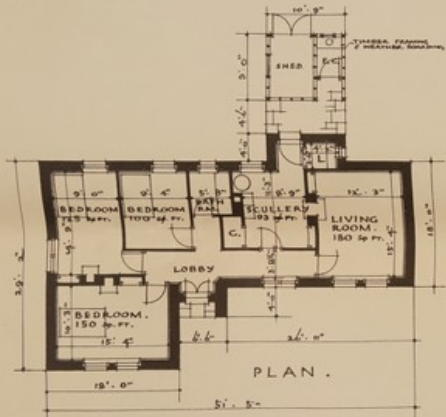
SECTION.



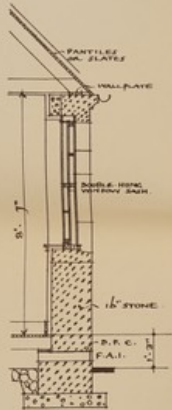
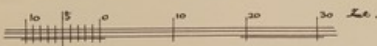
BACK ELEVATION.



SIDE ELEVATION.

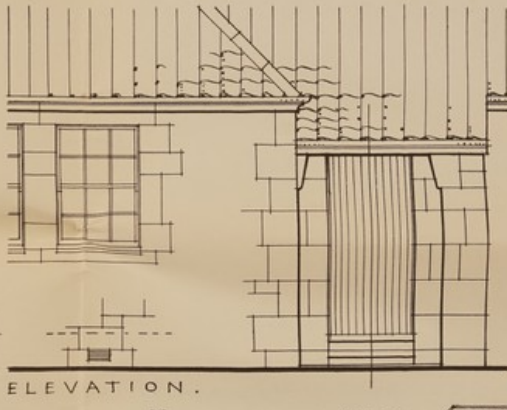


PLAN.

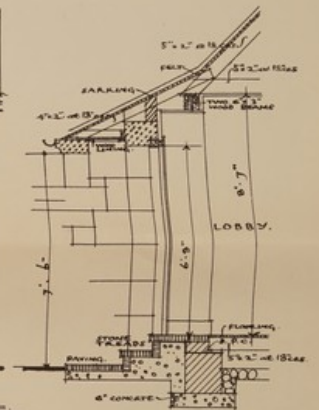


SECTION

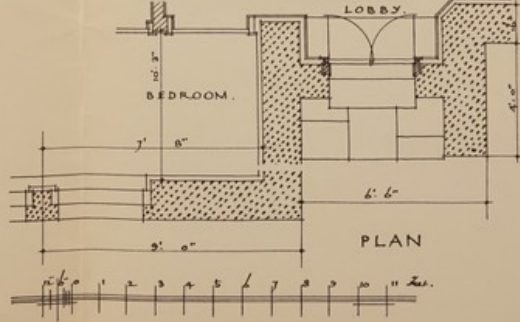
HALF INCH SCALE  
DETAILS OF  
ENTRANCE  
PORCH  
ETC.



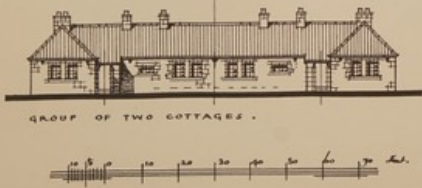
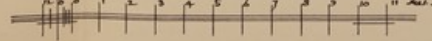
ELEVATION.



SECTION.



PLAN



GROUP OF TWO COTTAGES.



NOTE—For the guidance of persons building these cottages there is available the General Specification for State-aided houses issued by the Department of Health for Scotland. Copies can be obtained from H.M. Stationery Office, price 6d. (post free 7d.). Due consideration should be given to the use of available local materials and to local methods of building. This cottage is for use on sites where a gravitation water supply is not available. Provision is made for an earth closet and the washing boiler is so placed that hot water can be discharged from it into the bath by means of a short pipe.

PREFERENTIAL DESIGN BY  
*Arch. & Eng.*  
ARCHITECT.  
STATION ROAD,  
BARRY, ANGLS.

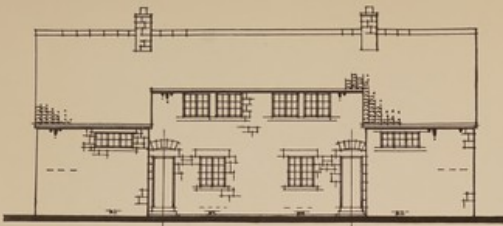




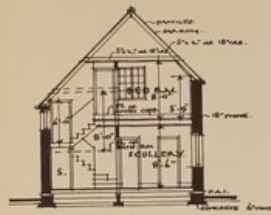
# RURAL COTTAGE COMPETITION

## TWO-STORY SEMI-DETACHED COTTAGE OF THREE APARTMENTS

No. 3



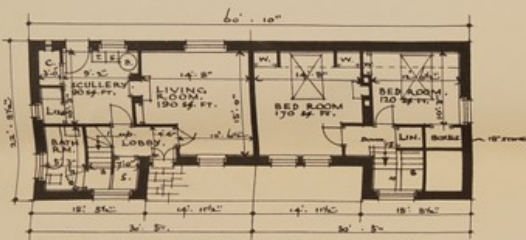
FRONT ELEVATION .



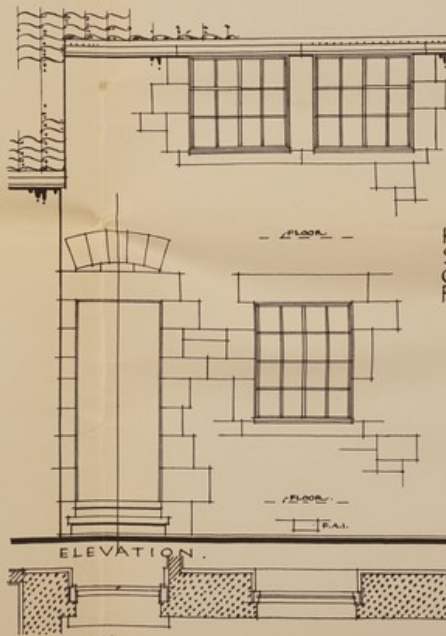
SECTION .



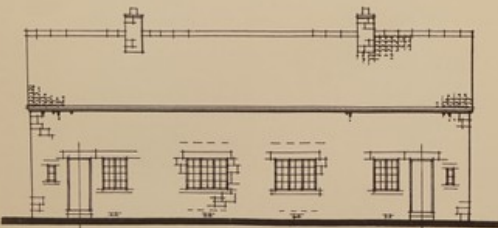
SIDE ELEVATION .



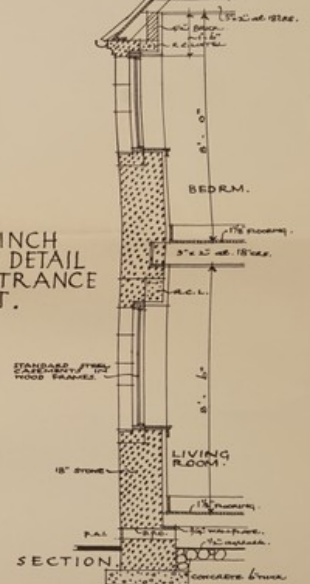
GROUND FLOOR PLAN . UPPER FLOOR PLAN .



HALF INCH SCALE DETAIL OF ENTRANCE FRONT .



BACK ELEVATION .



SECTION

NOTE—For the guidance of persons building these cottages there is available the General Specifications for State-aided houses issued by the Department of Health for Scotland. Copies can be obtained from H.M. Stationery Office, price 6d. (post free 9d.). Due consideration should be given to the use of available local materials and to local methods of building.

PREMIATED DESIGN BY  
*Walter S. Brown* A.R.I.B.A.  
 ARCHITECT.  
 STATION RD. BARRY, ANGLUS.

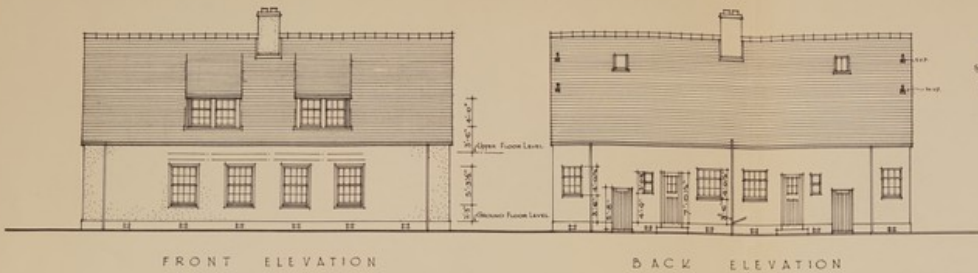
EDINBURGH: PUBLISHED BY HIS MAJESTY'S STATIONERY OFFICE  
 To be purchased directly from H.M. STATIONERY OFFICE at the following addresses:  
 229 George Street, Edinburgh; York House, Kingsway, London, W.C.1; 25 York Street, Manchester; 1, The Arcade, Leicester, Leicestershire; 40 Chichester Street, Belfast;  
 or through any bookseller.  
 1935  
 Price 2s. 6d. net.



# RURAL COTTAGE COMPETITION

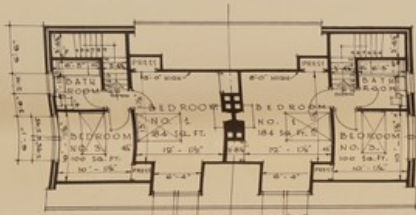
## TWO-STOREY SEMI-DETACHED COTTAGE OF FOUR APARTMENTS

NOTE:—For the guidance of persons building these cottages there is available the General Specification for State-aided houses issued by the Department of Health for Scotland. Copies can be obtained from H.M. Stationery Office, price 6d. (post free 9d.). The consideration should be given to the use of available local materials and to local methods of building.



FRONT ELEVATION

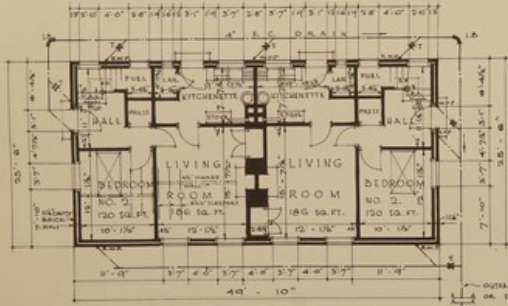
BACK ELEVATION



UPPER FLOOR PLAN

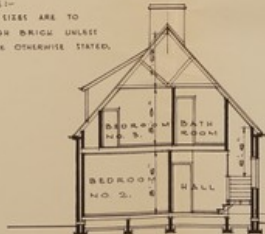


SIDE ELEVATION



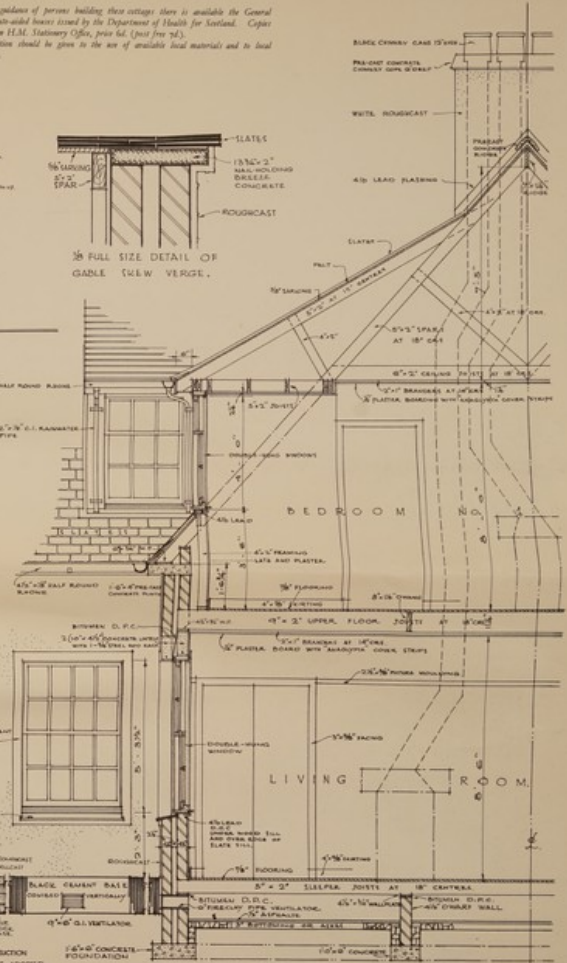
GROUND FLOOR PLAN

NOTE:—ALL SIZES ARE TO ROUGH BRICK UNLESS WHERE OTHERWISE STATED.



CROSS SECTION

SECTION ALTERNATIVE CONSTRUCTION IF BLUE BRICK BASE ADOPTED.



PART CROSS SECTION AND ELEVATION

PREMIATED PLAN BY SAMUEL Mc COLL A.R.C.S.A. CHARTERED AND REGISTERED ARCHITECT, 7 CROSS ROAD, WILKINGTON, PAISLEY.

SCALE FOR PLANS ELEVATIONS AND SECTION = 3/8 INCH = 1 FOOT. SCALE FOR ENLARGED SECTION = 1/8 INCH = 1 FOOT.





# RURAL COTTAGE COMPETITION

No. 5

## BLOCK OF TWO SINGLE-STOREY FOUR-APARTMENT COTTAGES

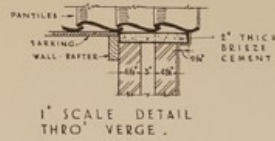
(This block can readily be converted into one three-apartment and one five-apartment cottage if found necessary)



END ELEVATION.

END ELEVATION.

SECTION "AA".



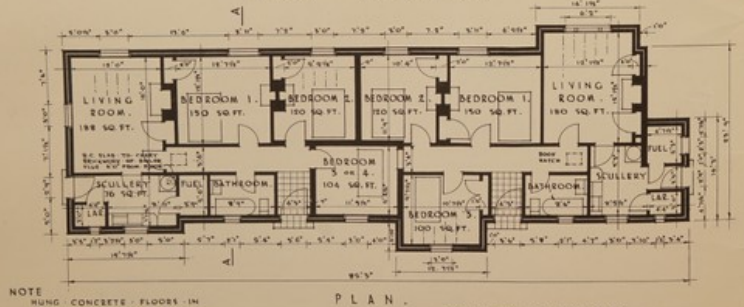
1" SCALE DETAIL THRO' VERGE.



BACK ELEVATION.



FRONT ELEVATION.

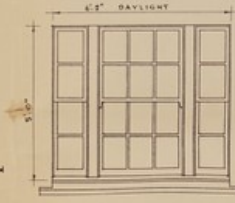


PLAN.

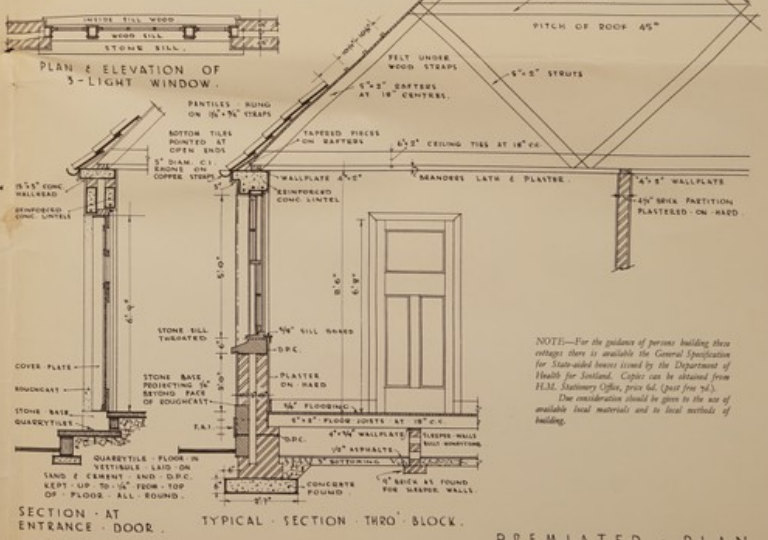
DIMENSIONS TO THE HARD AREAS TAKEN TO THE PLASTER.

NOTE  
HUNG CONCRETE FLOORS IN SCULLERY, LARDER & FUEL QUARTER. FLOOR IN VESTIBULE WOOD FLOORS IN LIVING & BEDROOMS.

SCALE: 1/8" = ONE FOOT.



PLAN & ELEVATION OF 3-LIGHT WINDOW.



SECTION AT ENTRANCE DOOR.

TYPICAL SECTION THRO' BLOCK.

SCALE: 1/8" = ONE FOOT.

NOTE  
PROPORTION OF GLASS PANE TO BE KEPT UNIFORM IN ALL WINDOWS.  
REFRIGE ON ENDS OF SILL

NOTE—For the guidance of persons building these cottages there is available the General Specification for State-aided houses issued by the Department of Health for Scotland. Copies can be obtained from H.M. Stationery Office, price 6d. (post free 9d.). Due consideration should be given to the use of available local materials and to local methods of building.

PREMIATED PLAN  
JAMES A. TWEEDIE  
PATRICK M. THOMPSON ARISA  
ARCHITECTS · EDINBURGH 1938.

