

## **Annual report : 1933 / Cheyne Hospital for Children.**

### **Contributors**

London (England). Cheyne Hospital for Children

### **Publication/Creation**

London : [Cheyne Hospital for Children], 1933

### **Persistent URL**

<https://wellcomecollection.org/works/qssvj4d9>

### **License and attribution**

This work has been identified as being free of known restrictions under copyright law, including all related and neighbouring rights and is being made available under the Creative Commons, Public Domain Mark.

You can copy, modify, distribute and perform the work, even for commercial purposes, without asking permission.



Wellcome Collection  
183 Euston Road  
London NW1 2BE UK  
T +44 (0)20 7611 8722  
E [library@wellcomecollection.org](mailto:library@wellcomecollection.org)  
<https://wellcomecollection.org>

# CHEYNE HOSPITAL

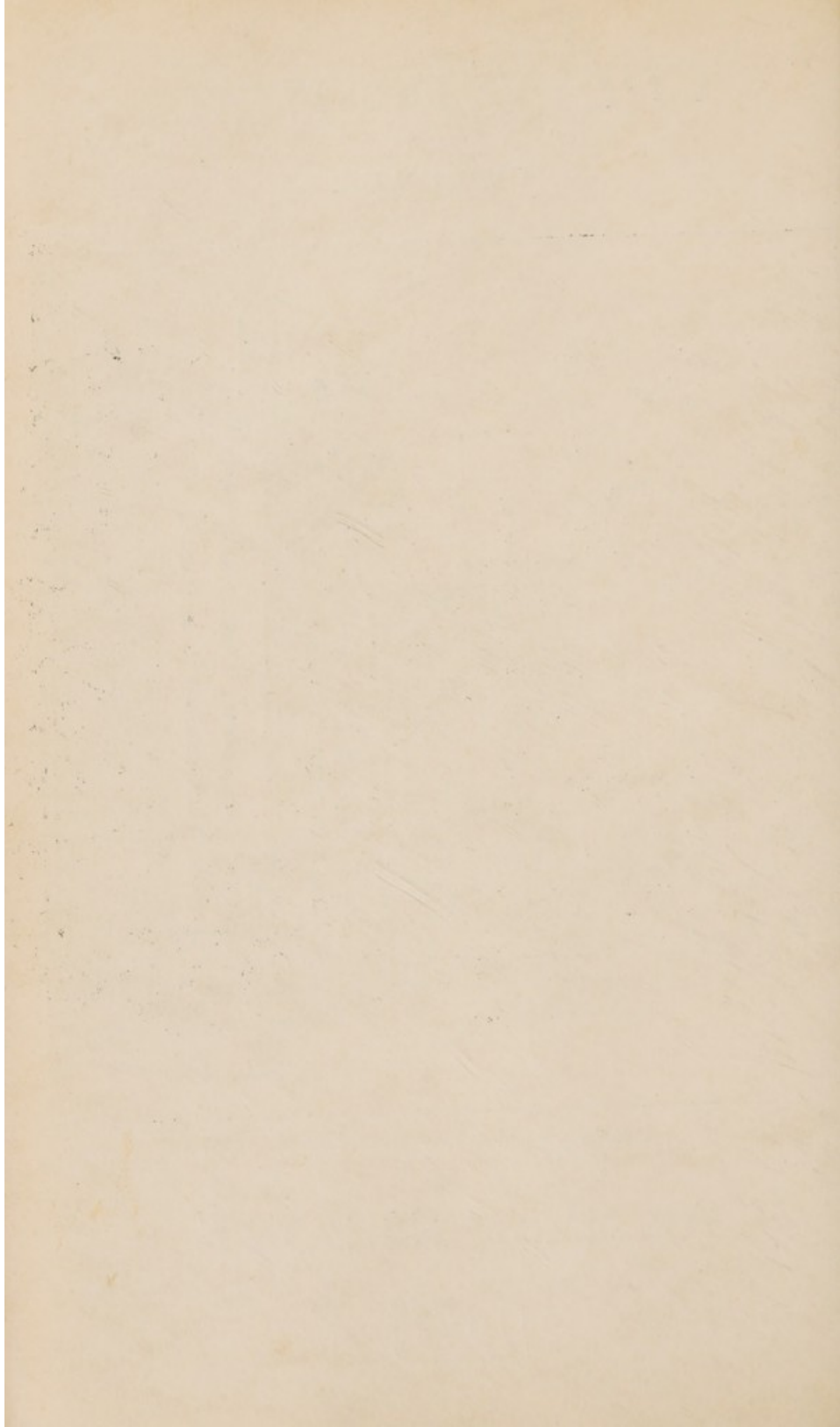
FOR  
CHILDREN



CHEYNE WALK CHELSEA S.W. 3

## ANNUAL REPORT

1933





# Cheyne Hospital for Children,

CHEYNE WALK, CHELSEA, S.W.3.

President ... HER MAJESTY THE QUEEN.

---

## FIFTY-EIGHTH ANNUAL REPORT,

FOR THE YEAR ENDED

31st DECEMBER, 1933.

---

The Hospital was founded 16th June, 1875, by the late Mr. and Mrs. Wickham Flower, of Chelsea, for the reception of Children requiring a prolonged period of treatment, and who are on that account ineligible for, or discharged from the General Hospitals.



**President :**

HER MAJESTY THE QUEEN.

**Vice-Presidents :**

THE RT. HON. THE EARL OF CROMER, G.C.B., G.C.I.E., G.C.V.O.

THE RT. HON. THE COUNTESS OF CROMER.

J. E. JEFFERSON HOGG, Esq., O.B.E., J.P.

THE RIGHT REV. THE LORD BISHOP OF BRISTOL.

C. H. ST. JOHN HORNBV, Esq.

MRS. SIMON MARKS.

**Trustees :**

LEONARD F. HARRISON, Esq.

THE HON. SIR TREVOR BIGHAM, K.B.E., C.B.

SIR REGINALD POOLE, K.C.V.O.

**Treasurer :**

LEONARD F. HARRISON, Esq.

**Auditors :**

MESSRS. BALL, BAKER & Co.,  
Chartered Accountants, Spencer House, E.C. 2.

**Bankers :**

THE WESTMINSTER BANK, LTD.,  
14, Sloane Square, S.W.1.

**Honorary Solicitors :**

Messrs. PRIDEAUX & SONS, Goldsmiths' Hall, E.C. 2.

**Honorary Chaplain :**

THE REV. W. G. ARROWSMITH, M.A.,  
Rector of Chelsea.

**Secretary :**

R. WILFRED A. ELLISTON.

**Assistant Secretary :**

B. E. BERRINGTON.

Telephone—FLAXMAN 3589.

### Committee of Management :

THE RT. HON. THE EARL OF CROMER, G.C.B., G.C.I.E., G.C.V.O.,  
*Chairman.*

GENERAL SIR WALTER BRAITHWAITE, G.C.B., *Vice-Chairman.*

Mrs. LIONEL BANON.	R. H. HYDE-THOMSON, Esq.
REGINALD BLUNT, Esq., C.B.E.	Miss D. M. MACNAMARA.
Sir JOHN ROSE BRADFORD, Bart., K.C.M.G., C.B., M.D., F.R.C.P.	Mrs. F. H. MELLOR.
W. S. C. COPEMAN, Esq., M.B., B.Ch., M.R.C.S., M.R.C.P.	Miss PEIRSE-DUNCOMBE.
EDWIN FISHER, Esq.	The Honble. DOROTHY PICKFORD.
LEONARD F. HARRISON, Esq.	Miss PLAYFAIR.
Mrs. LIONEL HICHENS.	Mrs. HUGH PRITCHARD.
J. E. JEFFERSON HOGG, Esq., O.B.E., J.P.	Sir REGINALD POOLE, K.C.V.O.
B. WHITCHURCH HOWELL, Esq., F.R.C.S.	HENRY A. RAUTHMELL, Esq.
The Lady HUTCHISON OF MONTROSE.	W. P. H. SHELDON, Esq., M.D.
	GWYNNE WILLIAMS, Esq., M.S., F.R.C.S.
	DOUGLAS S. YOUNG, Esq.

### Finance Committee :

REGINALD BLUNT, Esq., C.B.E., *Chairman.*

EDWIN FISHER, Esq.	R. H. HYDE-THOMSON, Esq.
L. F. HARRISON, Esq.	HENRY A. RAUTHMELL, Esq.

### Ladies' Committee :

Mrs. LIONEL BANON ( <i>Chairman</i> ).	The Lady HUTCHISON OF MONTROSE.
Miss PLAYFAIR ( <i>Vice-Chairman</i> ).	Miss D. M. MACNAMARA.
Mrs. D. P. CHAPMAN.	Mrs. F. H. MELLOR.
Miss DUNPHIE.	Miss PEIRSE-DUNCOMBE.
Miss HARE.	Mrs. H. M. PRITCHARD.
Mrs. LAURENCE HARRISON.	Mrs. H. A. RAUTHMELL.
Mrs. LIONEL HICHENS.	
Mrs. JEBB.	

### Education Committee :

THE HON. DOROTHY PICKFORD, *Chairman.*

Miss C. E. DANIEL.	Miss D. M. MACNAMARA.
Miss C FORDHAM.	Miss PLAYFAIR.
H. A. RAUTHMELL Esq.	

**Medical Staff : CHEYNE HOSPITAL.**

**Consulting Physician :**

SIR JOHN ROSE BRADFORD, Bart., K.C.M.G., C.B., M.D., F.R.C.P.

**Physicians :**

WILFRID P. H. SHELDON, M.D. (Lond.),  
34 Harley Street, W. 1.

W. S. C. COPEMAN, M.A., M.B., B.Ch. (Cantab.), M.R.C.S., M.R.C.P.,  
15 Harley Street, W. 1.

**Assistant Physician :**

R. H. TAYLOR REA, M.R.C.S., M.R.C.P., M.B., B.Ch. (Cantab.),  
34 Lower Sloane Street, S.W. 1.

**Consulting Surgeon :**

RAYMOND JOHNSON, M.B., F.R.C.S.

**Surgeons :**

GWYNNE E. O. WILLIAMS, M.S., F.R.C.S.,  
9 Park Square West, Regent's Park, N.W. 1.

B. WHITCHURCH HOWELL, F.R.C.S., 123 Harley Street, W. 1.

**Ophthalmic Surgeon :**

NORMAN FLEMING, M.B., Ch.B., D.O.M.S., R.C.P.S.,  
92 Harley Street, W. 1.

**Diseases of the Throat, Nose and Ear :**

TERENCE CAWTHORNE, F.R.C.S.,  
86 Brook Street, Grosvenor Square, W. 1.

**Dental Surgeon :**

T. VERNON, L.D.S.

**Anæsthetists :**

DR. CHARLES HODGSON, 31 Ambleside Avenue, S.W. 16.

DR. R. H. TAYLOR REA.

**Pharmacist :** Miss C. A. JAMES, M.P.S.

**Matron :** Miss G. A. BRIMMELL.

**ST. NICHOLAS HOSPITAL.**

**Consulting Surgeon :**

WM. GREENWOOD SUTCLIFFE, F.R.C.S.,  
7 Devonshire Gardens, Margate.

**Surgeon :**

WILLIAM BOYLE NORCOTT, M.R.C.S., L.R.C.P.,  
St. John's, Birchington.

**Dental Surgeon :**

A. KINGSLEY WIGGINS, M.R.C.S., L.R.C.P., L.D.S., R.C.S.,  
1 Dalby Square, Margate.

**Hon. Chaplain :** REV. E. COLLES ROBINSON, M.A.

**Matron :** Miss A. C. MACL. MONEY.



# Fifty-Eighth Annual Report

OF

## The Committee of Management of Cheyne Hospital for Children,

For the Year ended December 31st, 1933.

THE Committee of Management have pleasure in presenting their Report, together with the Audited Statement of Accounts, for the year ended December 31st, 1933.

### Work of the Year.—Cheyne Hospital.

In Hospital, 1st January, 1933	...	...	68
New Patients Admitted	...	...	129
Transferred from St. Nicholas (Branch) Hospital			4
			—201
Discharged, Cured or Relieved	...	...	114
Removed	...	...	4
Died	...	...	6
Transferred to St. Nicholas (Branch) Hospital			13
Remaining in Hospital, 31st December, 1933			64
			—201
Number of Massage Treatments—Surgical			3661
Medical			4353
			—8014
Number of Operations	...	...	45
Number of Operations—Dental	...	...	14
			—59
Number of Patients X-Rayed	...	...	47

### St. Nicholas (Branch) Hospital.

In Hospital, 1st January, 1933	...	...	31
New Patients Admitted	...	...	35
Transferred from Cheyne Hospital	...		13
			—79
Discharged, Cured or Relieved	...	...	47
Removed	...	...	1
Died	...	...	0
Transferred to Cheyne Hospital	...	...	4
Remaining in Hospital, 31st December, 1933			27
			—79
Massage Treatments	...	...	372
Patients X-Rayed	...	...	7

The work of the Hospital has proceeded on normal lines during the past year, new patients admitted num-

bering 129 compared with 135 in 1932. There was a welcome diminution in the occurrence of infection, which was so prevalent in the previous year.

The average number of Cots occupied daily rose from 56 to 63 and the average length of stay was also slightly longer—170 days against 165 previously.

The most notable increase of work occurred in the Massage Department where the number of treatments increased by nearly 50 per cent.—to 8,014 from 5,570.

### **The Private Ward.**

The special attention of friends of the Hospital and the general public is drawn to the facilities available for the treatment of children in the Hospital's well-equipped Private Ward—a bright, sunny room overlooking the broad Embankment and Cheyne Walk—where patients between 3 and 13 years of age, whose parents cannot afford expensive Nursing Home fees, are eligible for admission. The Secretary will be pleased to supply further information upon application.

### **Finance—Expenditure.**

The gradual though definite improvement in the national economic position during the past year is reflected also in the Hospital's statement of account which shows a reduction in the deficit compared with 1932. To this deficit, however, must be added the debt of £1,000 brought forward from the previous year, and which was still outstanding at the end of 1933.

Ordinary Expenditure was slightly higher last year, rising from £6,757 to £7,057 and the increase of £300 is largely accounted for by extensive replenishment of stocks of linen, renewals of furniture, etc. The installation of six modern fireplaces in the Wards also involved expenditure of an unusual nature which, however, it is hoped, will be largely off-set in the course of time by economy in fuel consumption and greater heating efficiency.

A considerable charge upon the Hospital's income is represented by payments in respect of Rates and Taxes which have risen to £300 a year compared with £165 four years ago.

### **Nurses' Home—Additional Quarters.**

A much needed improvement was effected during the past year by the equipment of an adjoining house, No.



63, Cheyne Walk, as additional quarters for the Nursing Staff which for some years had been accommodated under cramped conditions. This house, which had been previously let on long lease by the Hospital, became available two years ago, when owing to great financial stringency, the opportunity to acquire it had to be declined. Last year, however, when the house was again available, your Committee felt that the proper housing of the Nursing Staff should be no longer delayed, although it was realised that in addition to the capital cost of over £100 for conversion, equipment, and furniture, the taking over of the house would involve a permanent additional maintenance charge of some £70 per annum.

The provision of the five additional rooms in this house has materially improved the accommodation for the Nursing Staff, and has, indeed, helped to solve what had really become an urgent problem.

Your Committee are satisfied that this increased expenditure is fully justified, and they ask that friends of the Hospital will endorse this progressive policy in practical form, by giving and influencing additional help to meet the burden of its extra debt.

### **Income.**

Whilst the total of Ordinary Income showed a slight improvement compared with 1932, it is noted with regret that receipts from Voluntary Sources decreased by £106.

**Annual Subscriptions, which declined by £44 in 1932, suffered a further reduction of £10 last year to the quite inadequate total of £425.**

**When it is realised that over £7,000—or £20 each day—is needed for current expenses, and that the present Annual Subscription List represents income of little more than £1 per day, it will be apparent how urgent is the need for increased help of this nature, and your Committee again appeal most earnestly that the total may be raised to at least a more adequate amount.**

### **Income Tax and Charitable Subscriptions.**

**A method of Subscription which is of special value both to the Donor and to the Hospital can be effected by completing a Form of Agreement, particulars of which will be gladly supplied by the Secretary. By such Agree-**



ment the Hospital can recover Income Tax on the contribution, and the Subscriber can claim to deduct the amount of the gift from his or her Tax Return.

### Royal and Other Gifts.

The Hospital had again the pleasure of receiving from:—

	£	s.	d.
H.M. The King ... ..	5	0	0
H.R.H. The Prince of Wales ... ..	5	0	0

the gift in each case being a Special Donation for the Christmas Entertainment of the children.

The following amounts are gratefully acknowledged:

	£	s.	d.
King Edward's Hospital Fund for London ...	422	0	0
Alexandra Day Committee ... ..	125	0	0
Bernhard Baron Charitable Trust ... ..	100	0	0
Metropolitan Hospital-Sunday Fund ...	90	0	0
Anonymous, per L. F. H. ... ..	50	0	0
Delmar Charitable Trust ... ..	20	0	0
Lion Hospital Aid Society ... ..	15	13	0
Farley, Major R. L. (Proceeds of Dance) ...	11	16	8
The Worshipful Company of Skinners ...	10	10	0
The Worshipful Company of Founders ...	10	10	0

Special thanks are tendered to Mr. Douglas S. Young for collecting Donations amounting to £61 7s. 0d., and to the Directors of Messrs. Barclay's Bank, Ltd. for a welcome gift of £52 10s. 0d.

### The Linen Guild.

The Linen Guild has again provided funds for the purchase of linen required for use in Hospital, and your Committee gratefully acknowledge a grant of £75, which was particularly acceptable in a year when requirements were much heavier than usual.

The Linen Guild is greatly in need of new members. Its objects are of considerable importance and value to the Hospital; the Subscriptions (5/- for Members and 2/6 for Associates) are small, and ladies desiring to join are invited to write to Mrs. H. A. Rauthmell, the Hon. Secretary, at the Hospital.

Your Committee again express their grateful thanks to Mrs. Ernest A. Ward for another most useful Christmas gift of 56 Bed Jackets, allocated from amongst a large number collected by her and distributed to London Hospitals.

The League of Remembrance has continued to render much appreciated and valuable services in cutting out and making up materials supplied by the Hospital.

### **The Cheyne Ball.**

The outstanding event of the year was The Cheyne Ball arranged by the Countess of Cromer, and held at Sunderland House, Mayfair, on December 12th.

A brilliant and enjoyable occasion, attended by some 300 guests was also notable for its remarkably successful financial result, which, including Donations received and promised, should amount to over £3,000. It should be noted however, that as the Ball Account was not closed until after the end of the year, the receipts from this source will appear in the Hospital Accounts for 1934.

It is difficult for your Committee adequately to express their deep appreciation and grateful thanks to Lady Cromer, Mr. and Mrs. Simon Marks, Mr. Sieff, The Bernhard Baron Charitable Trust and Mrs. Sannyer Atkin, Mr. Philip de Laszlo (who kindly presented a blank canvas, which realised £500 at auction), Miss Gertrude Lawrence and Mr. Leslie Henson, and the many other generous friends whose interest and support made so splendid a result possible. Special acknowledgment is made to the Honorary Organiser, Mrs. Frank Braham, who very kindly placed her valuable services and experience at the disposal of Lady Cromer and the Hospital, and was largely responsible for the excellent financial result.

### **"Pound Day."**

The Annual Pound Day was held on June 8th and again proved an unqualified success, the receipts including £336 2s. 5d. in cash (another record) and 670 lbs. of household commodities.

During the afternoon a delightful little ceremony took place in the sunshine in the Garden of the Hospital, when Dame Sybil Thorndike kindly attended, and gave much pleasure to a number of small people who had come specially to present to her collecting boxes in which they had gathered funds for the Hospital to the



extent of some £24. A vote of thanks, suitable expressed by the Earl of Cromer, Chairman of the Hospital, concluded the proceedings.

Your Committee are especially grateful to the Treasurer of the Hospital, Mr. Leonard F. Harrison, for gifts amounting to £205 17s. 0d. kindly collected for this occasion by him in the City.

### Legacies.

There was an increase in receipts under this heading compared with the previous two years, the total of £1,117 14s. 10d. comprising:—

	£	s.	d.
Peech, Mr. Henry, Exors. of ... ..	621	17	6
Frank, Sir Howard, Bart., Exors. of ...	449	17	4
Gosselin, Miss F. C., do. ...	26	0	0
Teague, Miss S. J., do. ...	20	0	0

The Awards received from the Estate of the late Mr. Henry Peech since 1927 have amounted to £1,641 17s. 8d. and it was possible during the year to complete the £1,000 Endowment of "The Henry Peech" Cot.

Sir Howard Frank will be remembered as the Vice-Chairman of the Hospital from 1929 till his death in 1932.

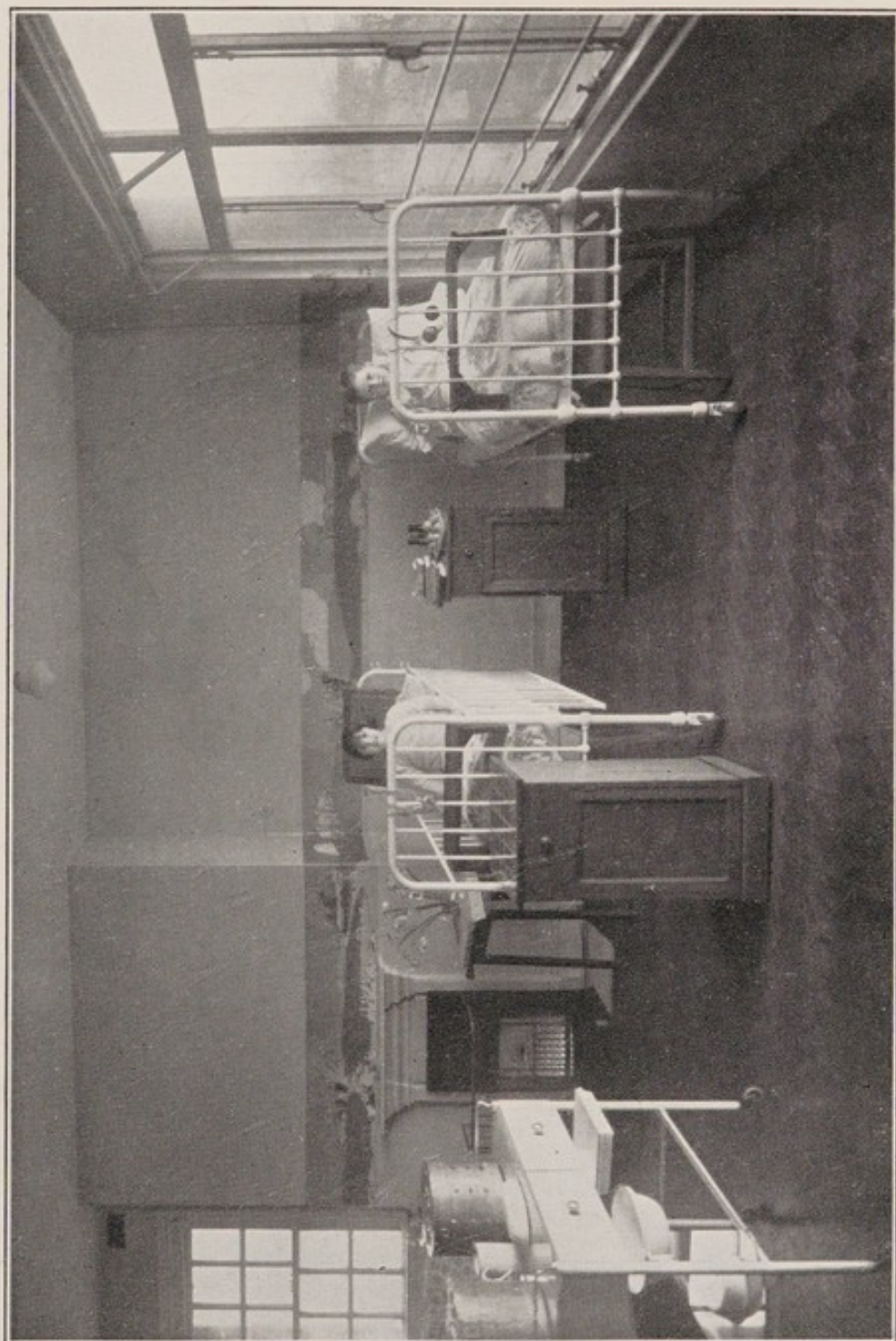
The Legacy of £20 by Miss Sarah Jane Teague is of particular interest, Miss Teague having been for nearly 40 years a member of the Nursing Staff of the Hospital, from whose service she retired on pension some 20 years ago.

**Benefactors desirous of making bequests to Charity by Will are specially asked to bear in mind, at the appropriate time, the needs of Cheyne Hospital.**

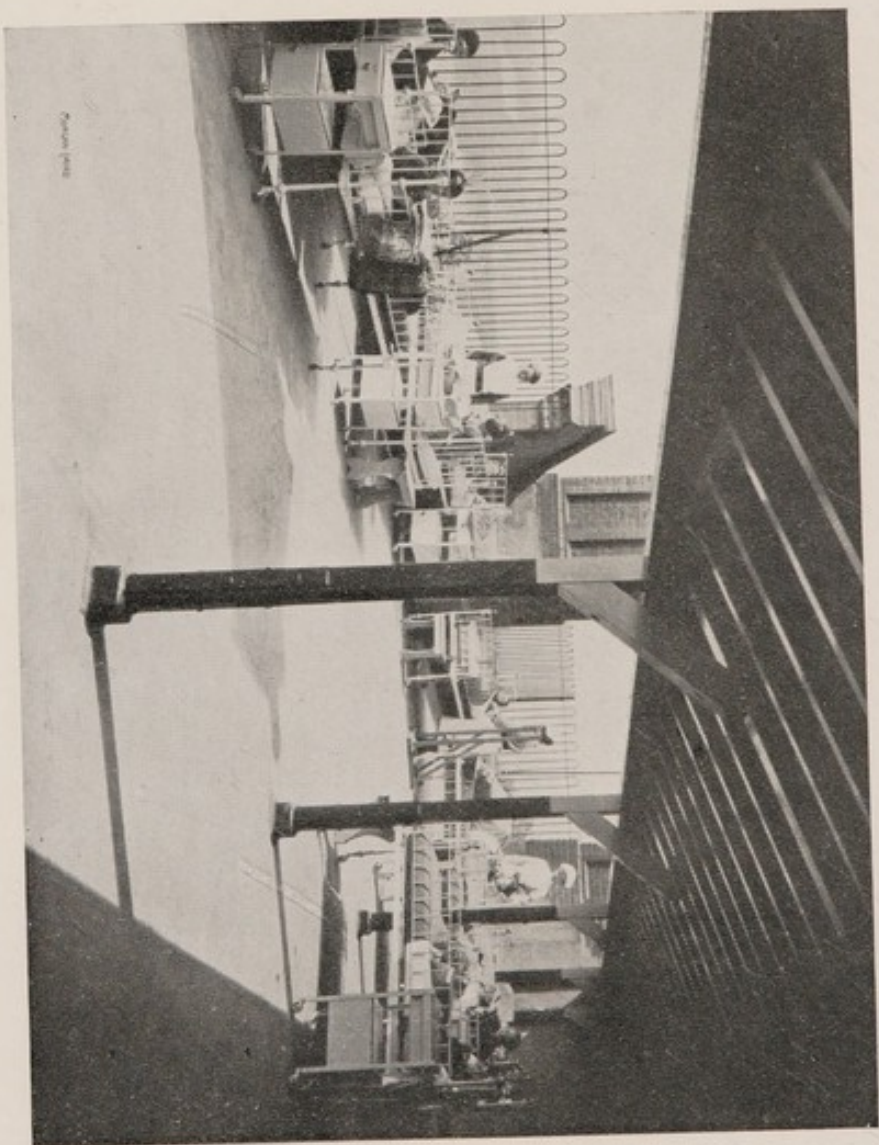
### Endowments.

In addition to the completion of the Endowment of the Henry Peech Cot, mentioned above, a further £50 was invested on account of the Cot in course of Endowment by the Rotary Club of Chelsea, to whom your Committee again express their grateful thanks for this interest and help.





A Corner of the New Private Ward, Cheyne Hospital.



The Duchess of York Ward for Open Air Treatment at Cheyne Hospital.



It is hoped that the arrangement now in operation whereby the Endowment of a Cot in the Hospital can be effected by means of instalments subscribed over a period of years, will commend itself to intending donors, who may not be able to contribute the full amount of £1,000 or £750 in one sum.

Attention is also drawn to the fact that in certain circumstances donors can deduct the amounts of such instalments from their Tax Return, and also benefit the Hospital to an additional extent by enabling it to recover Income Tax on the amount of the Gift.

### **Ladies Committee.**

This Committee has continued its activities, which deal with the household affairs of the Hospital and with special cases of after-care relating to Patients. Mrs. W. S. C. Copeman and Miss Sylvia Harrison have resigned their membership during the year.

### **"Godmother" Scheme.**

Special thanks are tendered to Mrs. Copeman for the very efficient way in which she has undertaken the duties of Hon. Secretary and Organiser in connection with the "Godmother" Scheme, whereby friends of the Hospital are enabled to take special interest in individual children whilst patients in the Hospital.

### **Ladies' Association.**

During the year a Ladies' Association has been formed with the object of creating increased interest in the Hospital by making its work and needs known to a wider circle of friends, extending the activities of the Linen Guild, promoting Entertainments in aid of its funds, and rendering assistance in various ways.

Mrs. Lionel Hichens has consented to act as Chairman of the Ladies' Association and is specially desirous that ladies wishing to become members should communicate with her at the Hospital.



### **Education.**

The education of the children by trained teachers has been continued during the year. The School was visited on May 24th by H.M. Inspector, who expressed satisfaction with the progress made. The Board of Education noted that "The school generally is well organised on suitable lines and has much improved, that the children are interested and responsive, and that good results are obtained.

### **Matron.**

An important change occurred in the Hospital at the close of the year when, owing to ill health, Miss Louise Angus relinquished the office of Matron which she had held for nearly 20 years.

Since her appointment in 1914 Miss Angus had administered her Department with ability and success, maintaining a high standard among the staffs under her care, and always evincing a sympathetic understanding with the children, and a keen interest in the welfare of the Hospital. Your Committee place on record their appreciation of Miss Angus's faithful and devoted service, and wish her happiness and improved health in her retirement.

Your Committee are pleased to report that they have appointed as Matron Miss G. A. Brimmell, who has worked with Miss Angus at the Hospital for many years, and they feel that her qualifications and long experience render her eminently suitable for the responsible post to which she has been unanimously elected.

### **St. Nicholas (Branch) Hospital.**

Although the work at this Branch Hospital near the Thanet coast was interrupted by two periods of quarantine owing to mild outbreaks of infection, the number of new cases admitted for treatment was slightly more than in 1932, and the average length of stay of each patient decreased from 286 to 225 days.

The average total cost of each patient was reduced from £61 to £47 and the cost per week—£1 9s. 3d.—was also slightly lower than in the previous year.

A successful Garden Fête was opened by Lady Hutchison of Montrose in the grounds of the Hospital on June 29th and realised £128 13s. 4d., including a sum of £15 received as the proceeds of a Whist Drive kindly organised by Mrs. Walker and Mr. G. B. Farrar, of Birchington. Your Committee express their grateful appreciation and thanks to the many friends and helpers whose co-operation and interest contributed so greatly to this very satisfactory and pleasing result.

A Grant of £37 was received from the "Alexandra Day" Collection in Birchington and District, and special thanks are again due to Mrs. W. Boyle Norcott for the able way in which she kindly organised the local arrangements.

A Sale of Handwork made by the patients was held on December 16th, when the children also presented a little Christmas Play "Who Stole The Plum Pudding?" which had been specially written for the occasion by Mr. Ernest A. Jelf, who attended the performance.

The production of the Play gave much pleasure to the youthful actors, and their efforts were heartily commended by an appreciative audience.

Your Committee regret to record the death of Mrs. H. T. Willett, of Monkton Parsonage, who had been associated with St. Nicholas Hospital since it was established over 20 years ago, and they recall with appreciation the kindly interest and generous support she was ever willing to give, both in connection with the Garden Fêtes at the Hospital and with the St. Nicholas Cot League.

### **General.**

For the third time in four years the Duchess of York (open-air) Ward has been successful in winning the Silver Cup for the best exhibit at the Cheyne Gardens Guild Spring Bulb Show.

Grateful acknowledgement is made to Mrs. Rauthmell and Mrs. Cameron who again kindly provided Christmas Trees and Gifts for all the children, to whom they proved a source of great delight.

Miss Jessie Williams, to whom reference was made in the last Report resigned from the Domestic Staff after 31 years faithful service which has been much appreciated by the Committee.



### **Vice-Presidents.**

The Countess of Cromer and Mrs. Simon Marks who were the Chairman and Vice-Chairman respectively of The Cheyne Ball, have been elected Vice-Presidents of the Hospital.

### **Committee.**

In accordance with the rules, three members—Mr. Douglas S. Young, Miss Peirse Duncombe and Mrs. F. H. Mellor—retire from the Committee in the order of priority of their appointment, and are eligible for re-election at the Annual Meeting, for a further period of three years.

On behalf of the Committee of Management.

CROMER, *Chairman.*

LEONARD F. HARRISON, *Treasurer.*

*17th April, 1934.*

## THE ANNUAL MEETING.

---

THE ANNUAL MEETING of the Governors and Committee of Management of Cheyne Hospital for Children was held at the Hospital on Tuesday, April 17th, 1934, at 6 p.m.

There were present—The Right Honble. The Earl of Cromer (in the Chair), General Sir Walter Braithwaite (Vice-Chairman), Mrs. Lionel Banon, Mr. Reginald Blunt, C.B.E., Mr. Leonard F. Harrison, Miss Macnamara, Mrs. F. H. Mellor, Miss Peirse-Duncombe, The Honble. Dorothy Pickford, Miss Playfair, Miss Spring Rice, Dr. Sheldon and Mr. Douglas S. Young.

---

The Minutes of the last Annual Meeting having been taken as read, the Chairman proposed the following Resolution, which was seconded by the Vice Chairman, General Sir Walter Braithwaite:—

“That the Annual Report and Audited Statement of Accounts for the year ended December 31st, 1933, be adopted and circulated.” Carried Unanimously.

RESOLUTION 2. Proposed by—The Honble. Dorothy Pickford.  
Seconded by—Miss Playfair.

“That the following Members of the Committee of Management who retire at this Meeting in order of the seniority of their appointment, be, and hereby are, re-elected, viz., D. S. Young, Esq., Miss Peirse Duncombe and Mrs. F. H. Mellor.” Carried Unanimously.

RESOLUTION 3.—Proposed by—General Sir Walter Braithwaite.  
Seconded by—Mrs. Banon.

“That The Right Honourable The Earl of Cromer, G.C.B., G.C.I.E., G.C.V.O., be, and hereby is, elected as Chairman of the Committee of Management for the ensuing year.” Carried Unanimously.

RESOLUTION 4. Proposed by—The Chairman.  
Seconded by—Mr. Reginald Blunt.

“That General Sir Walter Braithwaite, G.C.B., be, and hereby is, elected as Vice-Chairman of the Committee of Management for the ensuing year.” Carried Unanimously.

RESOLUTION 5. Proposed by—The Chairman.  
Seconded by—The Honble. Dorothy Pickford.

“That the following Members of the Committee of Management be appointed as a Finance Committee for the ensuing year: Messrs. Reginald Blunt, Edwin Fisher, L. F. Harrison, R. H. Hyde-Thomson and H. A. Rauthmell.” Carried Unanimously.



RESOLUTION 6. Proposed by—The Chairman.

Seconded by—Mr. Reginald Blunt.

"That the following ladies be appointed as Members of the Ladies' Committee for the ensuing year: Mrs. Banon, Mrs. Chapman, Miss Dunphie, Miss Hare, Mrs. Laurence Harrison, Mrs. Hichens, Lady Hutchison of Montrose, Mrs. Jebb, Miss Peirse-Duncombe, Miss Macnamara, Mrs. Mellor, Miss Playfair, Mrs. H. M. Pritchard and Mrs. Rauthmell." Carried Unanimously.

RESOLUTION 7. Proposed by—The Chairman.

Seconded by—Mr. Douglas S. Young.

"That the Education Committee be constituted as follows: The Honble. Dorothy Pickford (Chairman), Miss C. E. Daniel, Miss C. Fordham, Miss Macnamara, Miss Playfair and H. A. Rauthmell, Esq." Carried Unanimously.

RESOLUTION 8. Proposed by—The Chairman.

Seconded by—General Sir Walter Braithwaite.

"That a cordial Vote of Thanks be accorded to the Medical Officers and Nursing Staff of both Hospitals, and to the Treasurer and Honorary Solicitors for their services to the Hospital during the past year." Carried Unanimously.

The Chairman having referred in appreciative terms to the services rendered to the Hospital as Matron by Miss Louise Angus prior to her retirement, and extended a welcome to Miss G. A. Brimmell, the new Matron, the proceedings terminated.

---

## CHEYNE AND ST. NICHOLAS HOSPITALS.

### VISITING DAYS.

Subscribers and Friends, and those interested in the work of the Hospitals, are invited to visit the Wards on Mondays, Wednesdays or Saturdays from 3.30 to 4.30 p.m.

---

Visiting Hours for Parents:—Sundays, 3 to 5 p.m.

## METHODS OF HELPING THE HOSPITAL.

### GIFTS IN MONEY.

£1,000 endows and names a Free Cot in perpetuity.

£750 endows and names a \*(half-payment) Cot in perpetuity.

£250, in one payment, entitles the Donor to name a Cot in perpetuity.

£300 endows and names a Free Cot for the Donor's life.

£250 endows and names a \*(half-payment) Cot for the Donor's life.

£40 Annual Subscription supports a named Free Cot.

£30 Annual Subscription supports a named \*(half-payment) Cot.

*\*i.e.*—The parents pay 3/6 per week instead of 7/-.

£52 10s. Donation constitutes a Life Governor.

£10 10s. 0d. Annual Subscription gives a Governor's preferential nomination.

Smaller Subscriptions or Donations are much valued and gratefully acknowledged.

### GIFTS IN KIND.

Game, Rabbits, Fresh Fruit, Jellies and Eggs, New (unbroken) Toys, etc., are always acceptable.

Freshly cut Flowers, and Plants, for the Wards are greatly appreciated by the Nursing Staff.

The following articles are specially needed :—

At Cheyne Hospital—Jerseys and Vests (knitted by hand), Nightgowns (white flannelette or cotton), Frocks (3 to 14 years), Pinafores and Bed Socks, also Cast-off Clothing (all sizes), Boots and Shoes for those children who are not always in bed.

At St. Nicholas Hospital—Cast-off Clothing, Boys' Jerseys, Red Twill Jackets, Flannel or Cotton Nightgowns, Long Sleeved Vests, Holland Overalls, and Boots and Shoes for convalescent children.

Patterns of Clothing will be gladly sent from either Hospital to anyone who will kindly supply the articles required.

Clean Old Linen is very useful.

Gifts of Royal Surgical Aid Society "Letters" will be gratefully acknowledged by the Secretary.

Gifts of Tin Foil (Silver Paper wrappings) are also useful, and are sold for the benefit of the funds of the Hospital.



## PRIVILEGES OF DONORS AND SUBSCRIBERS.

---

### COT ENDOWMENTS IN PERPETUITY.

1—A Donation of One Thousand Pounds (£1,000) endows a Free Cot in perpetuity, and the Donor is entitled to name the Cot, and to nominate eligible patients thereto as vacancies shall arise therein.

2—A Donation of Seven Hundred and Fifty Pounds (£750) endows a \*Half-Payment Cot in perpetuity, and the Donor is entitled to name the Cot and to nominate eligible patients thereto as vacancies shall arise therein.

### COT NAMED IN PERPETUITY.

A Donor of £250 in one sum is entitled to *name* a Cot in perpetuity, but without the right to nominate the occupants thereof.

### LIFE ENDOWMENTS.

1—A Donation in one sum of Three Hundred Pounds (£300) endows a Free Cot for the period of the life of the Donor, who is entitled to name it and to nominate eligible patients thereto as vacancies shall arise therein.

2—A Donation in one sum of Two Hundred and Fifty Pounds (£250) endows a \*Half-Payment Cot for the period of the life of the Donor, who is entitled to name it and to nominate eligible patients thereto as vacancies shall arise therein.

NOTE.—Life Cot Endowments, ceasing upon the death of a Donor, may be converted into Permanent Cot Endowments by the payment within twelve months of the death of the Donor, either by Bequest or otherwise, of the further sum of £700 in the case of a Free Life Cot Endowment, or of £500 in the case of a Half-Payment Life Cot Endowment, free of Legacy Duty.

\*i.e., the Parents paying 3/6 a week instead of 7/-

### SPECIAL NOTE *re* Donations for the purpose of Endowment of Cots :—

The Committee of Management will be pleased to make arrangements, in special cases, for Donations for the purpose of the Endowment of Cots to be

To THE SECRETARY, CHEYNE HOSPITAL FOR CHILDREN,  
CHEYNE WALK, CHELSEA, S.W. 3.

(Telephone : FLAXMAN 3589).

(A.R. 1934).

.....193

You may enter my name as a Contributor to the funds of  
CHEYNE HOSPITAL FOR CHILDREN, CHEYNE WALK, CHELSEA,  
S.W. 3, as follows :—

ANNUAL SUBSCRIPTION.

£            s.            d.

          :           :

DONATION.

£            s.            d.

          :           :

and I enclose this amount by.....herewith.

Name .....

Address .....

## BANK ORDER.

.....193

To.....(Bankers)

Address.....

**Please Pay** on my account to WESTMINSTER BANK, LTD,  
14 SLOANE SQUARE, LONDON, S.W.1, to the credit of the  
account of CHEYNE HOSPITAL FOR CHILDREN, CHEYNE WALK,  
CHELSEA, S.W. 3, the sum of.....guineas  
NOW and continue to make similar payment yearly on the  
above date until further notice.

Signature .....

Address.....

£           :           :

This Form should be sent to the Secretary,  
Cheyne Hospital for Children, Chelsea, S.W. 3



Benefactors desirous of making Bequests to Charity by Will are specially asked to bear in mind, at the appropriate time, the needs of Cheyne Hospital.

---

*IMPORTANT NOTICE.*

MORTMAIN AND CHARITABLE USES ACT, 1891.

Land and House Property may now be given by Will to or for the benefit of a Charity.

FORM OF BEQUEST.

---

I bequeath to the Trustees of Cheyne Hospital for Children, Cheyne Walk, Chelsea, the sum of ..... pounds (£ ) free of legacy duty, for the general purposes of that Institution; and I declare that the receipt of the Treasurer or Secretary for the time being of the said Cheyne Hospital shall be an effectual discharge for the same legacy.

Dated this                      day of                      1934.

Signed by the said (Testator  
Testatrix) in the presence of us both present at the same time who in (his  
her) presence at (his  
her) request, and in the presence of each other, have hereunto subscribed our names as witnesses

}                      A                      B

C                      D

E                      F

NOTE.—The above should be signed where the letter A B are printed and the two witnesses should sign where C D and E F are printed.

subscribed by instalments during a specified number of years, or shorter period, and for the Cot to be named upon completion of the full payment.

Particulars of this method may be obtained from the Secretary at the Hospital.

#### COT SUBSCRIBERS.

1—An Annual Cot Subscription of Forty Pounds (£40), or a Donation in one sum of One Thousand Pounds (£1000), entitles the Subscriber to name a Free Cot, and to nominate an eligible patient as often as the Cot becomes vacant; no further payment being required on behalf of the occupant.

2—An Annual Cot Subscription of Thirty Pounds (£30), or a Donation in one sum of Seven Hundred and Fifty Pounds (£750), entitles the Subscriber to name a Half-Payment Cot, and to nominate an eligible Patient as often as the Cot becomes vacant; the weekly payment of 3/6 being required from the parents or friends of the occupant.

#### GOVERNORS.

1—Donors of not less than Fifty Guineas (£52 10s.) in one sum and Annual Subscribers of Ten Guineas (£10 10s.) and upwards are thereby constituted Governors during the continuance of such subscription, and are entitled to attend and vote at the Annual Meeting of the Committee of Management, and to nominate one suitable case for admission annually, such cases having precedence on the list over those recommended by other Subscribers.

2—All Annual Subscribers of One Guinea and upwards are entitled to recommend one suitable case annually, during the continuance of such subscription; such cases taking precedence on the Admission List over those not so recommended.

#### EXECUTORS.

One of the Executors of every person from whose estate a Legacy of Fifty Guineas or upwards shall have been received by the Hospital, shall be entitled to the same privileges as a Donor of Fifty Guineas.

(For FORM OF BEQUEST see inset.)



## MEDICAL REPORT.

Summary of the nature of the cases treated at  
Cheyne Hospital.

	Treated	Discharged Cured	Discharged Relieved	Died	Transferred	Removed	Remaining in Hospital
Adenitis and Debility . . . . .	1	1	—	—	—	—	—
Amputation of Digit . . . . .	1	—	1	—	—	—	—
Anterior Poliomyelitis . . . . .	8	3	2	—	1	—	2
Arthritis . . . . .	11	1	3	—	4	—	3
Asthma . . . . .	1	—	—	—	—	—	1
Bronchiactasis . . . . .	1	—	1	—	—	—	—
Burn of Back . . . . .	1	—	1	—	—	—	—
Chorea . . . . .	37	16	7	—	2	—	12
Chorea and Heart . . . . .	10	2	2	2	—	—	4
Chronic Indigestion . . . . .	2	2	—	—	—	—	—
Cleft Palate . . . . .	1	1	—	—	—	—	—
Coeliac Disease . . . . .	1	—	—	—	—	—	1
Congenital Dislocation of Hip . . . . .	4	2	1	—	—	1	—
Double Otitis . . . . .	1	—	1	—	—	—	—
Empyema . . . . .	1	—	1	—	—	—	—
Genu Valgum . . . . .	1	1	—	—	—	—	—
Hallux Valgus . . . . .	2	2	—	—	—	—	—
Heart . . . . .	68	8	33	3	2	3	19
Hemiplegia . . . . .	5	—	3	—	—	—	2
Injury to Ankle . . . . .	1	—	1	—	—	—	—
Injury to Foot . . . . .	1	1	—	—	—	—	—
Injury to Knee . . . . .	1	—	—	—	—	—	1
Nephritis . . . . .	3	—	2	—	—	—	1
Osteomyelitis . . . . .	9	2	—	—	—	—	7
Perthes Disease . . . . .	1	—	—	—	—	—	1
Polioencephalitis . . . . .	1	—	—	—	1	—	—
Rickets . . . . .	1	—	—	—	1	—	—
Spastic Diplegia . . . . .	1	—	1	—	—	—	—
Spina Bifida . . . . .	2	1	—	—	—	—	1
Talipes . . . . .	3	2	—	—	—	—	1
Tonsils and Adenoids . . . . .	2	2	—	—	—	—	—
Torticollis . . . . .	2	2	—	—	—	—	—
Tuberculous Abdominal Glands and Genu Valgum . . . . .	1	—	—	—	1	—	—
Tuberculous Adenitis . . . . .	1	1	—	—	—	—	—
"    Hip . . . . .	5	—	1	1	—	—	3
"    Peritonitis . . . . .	2	—	—	—	1	—	1
"    Spine . . . . .	5	—	2	—	—	—	3
"    Sternum . . . . .	1	—	1	—	—	—	—
Webbed Digits . . . . .	1	—	—	—	—	—	1
	201	50	64	6	13	4	64

## MEDICAL REPORT.

Summary of the nature of the cases treated at  
St. Nicholas Hospital.

	Treated	Discharged Cured	Discharged Relieved	Died	Transferred	Removed	Remaining in Hospital
Abdominal Glands . . .	3	—	—	—	—	—	3
Adenitis . . .	2	1	1	—	—	—	—
Anaemia . . .	2	1	—	—	—	—	1
Anterior Poliomyelitis . .	1	—	—	—	1	—	—
Arthritis . . .	4	—	1	—	3	—	—
Chorea . . .	3	3	—	—	—	—	—
Debility . . .	8	6	—	—	—	1	1
Empyema . . .	1	—	1	—	—	—	—
Heart . . .	7	2	4	—	—	—	1
Hernia and Mastoiditis .	1	—	—	—	—	—	1
Nephritis . . .	1	—	1	—	—	—	—
Osteomyelitis . . .	5	1	1	—	—	—	3
Polioencephalitis . . .	1	—	1	—	—	—	—
Rickets . . .	2	1	1	—	—	—	—
Tuberculous Abdominal Glands	11	3	2	—	—	—	6
Tuberculous Abdominal Glands and Genu Valgum .	1	—	1	—	—	—	—
Tuberculous Adenitis . . .	17	11	1	—	—	—	5
„ Hip . . .	2	1	—	—	—	—	1
„ Knee . . .	1	—	—	—	—	—	1
„ Peritonitis . . .	6	—	2	—	—	—	4
	79	30	17	—	4	1	27



SUMMARY OF FIFTY-FIVE YEARS' WORK  
COMPILED FROM THE MEDICAL REPORTS.

YEAR ENDING.	Number of Occupied Cots in the Hospitals.	No. of Fresh Cases ad- mitted during the year.	Total Number of Pa- tients under treatment during the year.	Patients removed as Unit, or by Parents' desire.	Discharged Relieved.	Discharged Cured.	Died.	Remaining under the charge of the Hospitals.	
1st July, 1879 to ) 31st Dec., 1918 )	—	1113	—	72	280	399	283	—	
„ 1919	79	59	138	1	30	24	6	77	(Cheyne and St. Nicholas
„ 1920	77	40	117	2	16	17	8	74	
„ 1921	83	63	137	1	20	31	5	80	Do.
„ 1922	83	51	131	—	39	14	6	72	Do.
„ 1923	96	77	170	1	37	13	5	93	Do.
„ 1924	96	92	211	1	64	17	7	96	Do.
„ 1925	96	108	207	—	60	42	13	89	Do.
„ 1926	100	119	226	1	60	55	3	89	Do.
„ 1927	100	127	216	8	56	55	4	93	Do.
„ 1928	100	133	252	8	63	61	2	92	Do.
„ 1929	100	158	268	2	62	87	4	95	Do.
„ 1930	100	134	240	3	61	72	3	90	Do.
„ 1931	104	159	267	4	85	63	8	89	Do.
„ 1932	104	163	266	5	54	86	8	99	Do.
„ 1933	104	164	280	5	81	80	6	91	Do.
TOTALS ...		2760		114	1068	1116	371		

RESULTS.

Total number of Patients received during last 55 years	...	2760
Deduct—Patients removed by Parents or as Ineligible under Rules	114	
„ Remaining under Treatment Dec. 31, 1933	...	91
	—	205
Nett Number of Cases finally Treated	...	2555
Of which:—Number Discharged Relieved	...	1068
„ „ Cured	...	1116
„ who Died	...	371
	—	2555

Per Cent.

85.48

14.52

## “GODMOTHERS.”

---

A plan, which many people seem to like, has been started primarily for the purpose of supplying garments for the children, and which also assists the management and funds of the Hospital.

Ladies (or gentlemen) are asked to become “Godmother” (or “Godfather”) to a particular child, and

(a) To take an interest in the child, and to keep in touch with it when it leaves the Hospital;

(b) To help as far as possible by providing some clothing;

and/or

(c) To give a Donation to the Sister of the Ward for the latter purpose.

Donations given for the purchase of clothing to be allocated to the “Godmother” Clothing Fund for the Ward concerned, such Fund to be administered by the Sister-in-Charge as occasion may require.

Further particulars of the Scheme, and also as to Clothing required can be obtained upon application to the Hon. Sec., Mrs. Arnold Thompson, 32, Rivermead Court, Putney, S.W. 15, or from The Matron at the Hospital.



## OBJECTS OF THE HOSPITAL.

---

**C**HEYNE HOSPITAL was established in 1875 for the reception of Children suffering from Chronic and Incurable Disease, and who are on that account ineligible for or discharged from General Hospitals.

In this respect it may be said that the work of Cheyne Hospital begins where that of the General Hospitals ceases, but so successful has this work become that the word "Incurable" has been deleted from the title of the Hospital where it once appeared.

Although many of the patients are beyond hope of ultimate recovery, it is found that medical skill and careful nursing, together with good food and ventilation, which often cannot be obtained in the homes of the poor, will always greatly alleviate suffering; while some cases can be successfully treated, which, requiring for their cure a longer time than can be spared to them in General Hospitals, receive here continuous care for an indefinite period. **Over 85 per cent. of the patients treated have been discharged in a cured or relieved condition.**

### NOTE.

The Committee of the Cheyne Hospital desire to state that, owing to the special character of this Institution, it is not considered advisable to give "Letters of Recommendation" to those who kindly contribute. Such Letters are of little value, unless they carry a reasonable probability of early admission or relief; indeed they are useless, because they would appear to give a promise which could not be fulfilled, and would thus lead to disappointment and misunderstanding. As the main object of Cheyne Hospital is to undertake the care and treatment of cases of deep-seated or incurable disease, which General Hospitals do not accept, and to keep them for lengthy periods, it will be obvious that changes are slow and vacancies fewer than in most Hospitals. The *average* length of Patients' stay in the Hospital is usually about six months, while many of the children remain for longer periods. Subscribers are invited to write in reference to any case in which they may be interested, to the Secretary, who will, should it appear *prima facie* eligible, forward a copy of Form of Medical Certificate, on return of which duly filled in, the Child's name will be added to the list for examination and admission when vacancies arise, and in accordance with the privileges of Donors and Subscribers (see pp. 18-19). More than this cannot satisfactorily be promised, and the Committee feel it due to their many and generous friends to make their position in this matter clear.



## RULES FOR THE ADMISSION OF PATIENTS.

1—Children eligible for admission are those who have been rejected or discharged from a General Hospital, or who are considered to be unsuitable for treatment in such Hospitals.

2—Cases of Pulmonary Tuberculosis, Epilepsy, Hydrocephalus, Mental derangement or deficiency, all infectious cases, and Cripples not requiring Surgical Treatment, are not eligible.

3—Age Limits.—Children eligible are those between 3 and 13 years of age (*i.e.*, up to the 14th birthday), those recommended by Governors or Subscribers taking precedence. Patients are not retained after the age of sixteen, except by special sanction.

4—The payment of Seven Shillings a week is required from the Parents or Friends of the Patients.\*

5—Forms of Medical Certificate and Guarantee (to be obtained from the Secretary) must be duly filled in and signed by a qualified Medical Practitioner and responsible Guarantor respectively, and returned to the Secretary of the Hospital prior to admission.

The Guarantor should be a householder (or the wife of a householder) rated at £40 or more per annum. Unless the parents make regular weekly payments at the Hospital, the Guarantor is requested to arrange to receive their contributions and remit the maintenance charge quarterly.

6—The Guarantor will also be responsible for the cost of such Surgical Appliances or Splints as may be ordered for the patient by the Medical Officer.

7—The Committee reserve power to refuse the name of any Guarantor without reason assigned, or to require a Guarantor to furnish references for the necessary security to their satisfaction.

8—No Guarantee shall be withdrawn without one month's previous notice in writing to the Secretary of the Hospital.

9—Applicants for admission may be required to be brought to the Hospital for Medical examination before they can be admitted.

10—The expenses of admission and removal must be in all cases defrayed by the parents or friends of the child. Any child who has been admitted to the Hospital, but who subsequently proves unsuitable from any cause, may be discharged upon three days' notice, sent by post to the last furnished address of the parent or guardian.

11—A Medically Signed Report certifying the Negative Result of the examination of swabs taken from both the nose and the throat of the child within four days of admission, also a certificate that the patient has not been suffering from any infectious disease, nor been exposed to infection, must be signed by a responsible person cognisant of the facts, and brought with the child on admission.

12—Any alteration in the address of the patient while awaiting admission or in Hospital should be at once notified to the Secretary.

---

\* Certain Free and Assisted Cots have been founded for specially necessitous cases. Applications for vacancies in these must be accompanied by full particulars of the circumstances of the family; and it must be borne in mind that the Committee have only a limited number of these Cots at their disposal.





31st DECEMBER, 1933.

Cr.

## ASSETS.

	£ s. d.	£ s. d.	£ s. d.
I. CASH AT BANK AND IN HAND.			
(A) Endowments ... ..	51	12	1
(B) Special Funds ... ..			
(C) Buildings and Equipment Funds ...			
(D) General Fund ... ..	107	14	10
			159 6 11
II. STOCKS OF UNISSUED STORES IN HAND ...			171 12 1
III. SUNDRY DEBTORS.			
General Fund ... ..			1132 17 5
IV. INTERNAL LOANS.			
From Cranstoun Kerr Cot Endowment			
Fund to General Fund ... ..			458 17 3
V. INVESTMENTS (see pp. 38--40)			
(A) Hospital Endowments ... ..	52860	19	1
(B) Special Funds ... ..			
(C) Buildings and Equipment Funds ...			
(D) General Fund ... ..	3945	2	7
			56806 1 8
VI. LAND, BUILDINGS AND EQUIPMENT OF THE HOSPITALS			
Expenditure to 31st December, 1932 ..	447	16	6 5
Expenditure during the Year to 31st December, 1933 ... ..	129	8	8
See Contra (D) General Fund ... ..	2762	7	0
			47608 2 1
			<u>£106336 17 5</u>

*of Income and Expenditure with the Vouchers, and find the same to be correct, of the Trustees of the Hospital.*

*Land and Buildings in Lawrence Street, Chelsea, Nos. 62 & 63 Cheyne Walk, produced to us. To the best of our knowledge and belief the regulations*

Spencer House,  
South Place, E.C.2.  
7th March, 1934.

BALL, BAKER & Co.,  
Chartered Accountants,



Dr.

## INCOME AND EXPENDITURE ACCOUNT

ORDINARY.		INCOME.					
		£	s.	d.	£	s.	d.
I. VOLUNTARY GIFTS.							
1.	Subscriptions, Donations, etc. :—						
	Annual Subscriptions (see page 48)	425	19	11			
	Donations (see page 48) ...	929	18	2			
	Box Collections (see page 54) ...	20	5	9			
	Entertainments :						
	Gross Receipts £ ...						
	Less Expenses £ ...						
	Gifts in kind ...	62	17	3			
	Congregational Collections (see page 55)	15	7	5			
	Other Voluntary Gifts :—						
	Cot Subscriptions ...	161	7	6			
					1615	16	0
2.	Central Funds :—						
	*King Edward's Hospital Fund ...	422	0	0			
	Hospital Sunday Fund ...	90	0	0			
	Other Central Funds ...				512	0	0
							2127 16 0
	*Including Branch Hospital at St. Nicholas-at-Wade						
II. RECEIPTS ON ACCOUNT OF SERVICES RENDERED.							
1.	Contributions on Account of Services to Patients :—						
(a)	From Patients and their Societies—						
	Patients ...	650	19	4			
	Contributory Schemes—						
	Hospital Saturday Fund ...	235	4	0			
	Hospital Saving Association ...	499	13	9			
	Other Sources ...						
					1385	17	1
(b)	From Public Authorities	1310	18	10			
	Board of Education						
	(Medical Grant)	360	0	0			
					1670	18	10
							3056 15 11
	Carried forward ...				£3056	15	11
					2127	16	0

## FUND.

29

FOR THE YEAR TO THE 31st DECEMBER, 1933.

Cr.

EXPENDITURE.				£	s.	d.	£	s.	d.
ORDINARY.									
I. PROVISIONS	...	...	...				1250	4	2
II. SURGERY AND DISPENSARY.									
1. Drugs, Chemicals, Disinfectants, etc.	...		...	79	13	11			
2. Dressings, Bandages, etc.	...		...	66	8	10			
3. Instruments and Appliances	...		...	34	3	5			
4. Wines and Spirits	...		...	5	2	9			
5. Salaries and Wages of Dispensing Staff	...		...	62	2	0			
6. Sundries	...		...	78	5	5			
							325	16	4
III. DOMESTIC.									
1. Renewal and Repair of Furniture, Bedding, Crockery, etc.	...		...	419	6	1			
2. Laundry	...		...	456	6	4			
3. Cleaning and Chandlery	...		...	92	5	8			
4. Water	...		...	31	18	9			
5. Fuel and Lighting	...		...	551	16	2			
6. Uniforms	...		...	41	14	10			
7. Sundries	...		...	2	4	5			
							1595	12	3
IV. SALARIES AND WAGES (MAINTENANCE).									
1. Medical	...		...	333	17	6			
2. Nursing	...		...	1369	7	10			
3. Other Officers and Employees	...		...	487	9	4			
4. Pensions	...		...	231	9	6			
							2422	4	2
V. MISCELLANEOUS.									
1. Printing, Stationery, Postages, Telephones, etc.	...		...	51	4	0			
2. Advertisements	...		...						
3. Insurance of Buildings, Equipment, Stores, etc.	...		...	45	9	6			
4. Garden	...		...	20	1	6			
5. Sundries	...		...	43	13	5			
							160	8	5
VI. ADMINISTRATION.									
1. Salaries	...		...	568	19	1			
2. Pensions	...		...						
3. Printing, Stationery, Postages, Telephones, etc.	...		...	56	4	9			
4. Advertisements	...		...						
5. Law Charges	...		...						
6. Auditor's Fee	...		...	7	7	0			
7. Sundries	...		...	14	13	2			
							647	4	0
Carried forward							£6401	9	4



Dr.

## INCOME AND EXPENDITURE ACCOUNT

		INCOME.					
		£	s.	d.	£	s.	d.
	Brought forward	3056	15	11	2127	16	0
2.	Fees :						
	Nurses' and Probationers' Fees						
	Other Fees	...	...				
3.	Other Receipts	...	...				
					3056	15	11
III. INVESTED PROPERTY.							
	Interest, Dividends, etc.	...			1687	5	10
	Rents	...	...	...	223	18	8
					1911	4	6
	Ordinary Income				7095	16	5
EXTRAORDINARY.							
I.	LEGACIES	...	...	...	867	14	10
II	Other Extraordinary Income	...					
	Extraordinary Income				867	14	10
	Total Income				7963	11	3
	Balance, being excess of Total Expenditure over Total Income for the Year					14	18 2

---

 £7978 9 5
 

---

FUND.

31

FOR THE YEAR TO THE 31st DECEMBER, 1933 (Continued). Cr.

## EXPENDITURE.

			£	s.	d.	£	s.	d.
	Brought forward	...				6401	9	4
I. ESTABLISHMENT.								
	Renewals and Repairs to Buildings and Plant	...				355	11	0
II. FINANCE.								
1.	Interest	...	...	...	32	16	9	
2.	Appeals	...	...	...	12	0	10	
3.	Rent	...	...	...				
4.	Rates and Taxes	...	...	...	255	19	2	
						300	16	9
	Ordinary Expenditure					7057	17	1
EXTRAORDINARY.								
I. CONTRIBUTIONS TO OTHER INSTITUTIONS								
	St. Nicholas Hospital	...	...	...	890	15	9	
II. OTHER EXTRAORDINARY EXPENDITURE								
	School	...	...	...	29	16	7	
	Extraordinary Expenditure					920	12	4
	Total Expenditure					7978	9	5

---

 £7978 9 5
 

---



# ST. NICHOLAS (BRANCH) HOSPITAL, INCOME AND EXPENDITURE ACCOUNT

Dr.

ORDINARY.		INCOME.					
		£	s.	d.	£	s.	d.
I. VOLUNTARY GIFTS.							
1. Subscriptions, Donations, etc. :—							
Annual Subscriptions (see page 63)		17	7	4			
Donations (see page 63)	...	178	2	0			
Box Collections (see page 54)	...		12	6			
Entertainments—							
Gross Receipts	... £						
Less Expenses	... £						
Gifts in kind	... ..	5	9	10			
Other Voluntary Gifts—							
Cot Subscriptions (see page 63)		80	0	0			
					281	11	8
2. Central Funds :—							
*King Edward's Hospital Fund	...						
Hospital Sunday Fund	...						
Other Central Funds	...						
							281 11 8
*(The work of the St. Nicholas (Branch) Hospital is taken into account in the Grant to the parent Hospital.)							
II. RECEIPTS ON ACCOUNT OF SERVICES RENDERED.							
1. Contributions on Account of Services to Patients :—							
(a) From Patients and their Societies—							
Patients	... ..	331	17	8			
Contributory Schemes—							
Hospital Saturday Fund	...						
Hospital Saving Association	...		15	0			
Approved Societies	...						
Other Sources	... ..						
					332	12	8
(b) From Public Authorities—							
County Borough Councils	£ s. d.						
(Tuberculosis and Surgical)	... 982 4 11						
Board of Education							
(Medical Grant)	135 0 0						
		1117	4	11			
					1449	17	7
2. Fees :—							
Nurses' and Probationers' Fees	...						
Other Fees	... ..						
3. Other Receipts	... ..						
							1449 17 7
III. INVESTED PROPERTY.							
Interest, Dividends, etc.	... ..				43	15	0
Rents	... ..						
							43 15 0
Carried forward	...				1775	4	3

T. NICHOLAS-AT-WADE, KENT.  
 FOR THE YEAR TO THE 31st DECEMBER, 1933.

33  
 Cr.

EXPENDITURE.				£	s.	d.	£	s.	d.
ORDINARY.									
I. PROVISIONS	...	...	...				638	2	6
II. SURGERY AND DISPENSARY.									
1. Drugs, Chemicals, Disinfectants, etc.	...	...	...	19	4	6			
2. Dressings, Bandages, etc.	...	...	...	7	10	2			
3. Instruments and Appliances	...	...	...	1	12	4			
4. Wines and Spirits	...	...	...	1	4	6			
5. Salaries and Wages of Dispensing Staff	...	...	...						
6. Sundries	...	...	...	7	2	2			
							36	13	8
I. DOMESTIC.									
1. Renewal and Repair of Furniture, Bedding, Crockery, etc.	...	...	...	91	9	11			
2. Laundry	...	...	...	175	18	8			
3. Cleaning and Chandlery	...	...	...	26	18	11			
4. Water	...	...	...	10	18	2			
5. Fuel and Lighting	...	...	...	172	19	6			
6. Uniforms	...	...	...	3	11	3			
7. Sundries	...	...	...	12	5				
							482	8	10
IV. SALARIES AND WAGES (MAINTENANCE).									
1. Medical	...	...	...	73	10	0			
2. Nursing	...	...	...	412	10	1			
3. Other Officers and Employees	...	...	...	205	18	3			
4. Pensions	...	...	...						
							691	18	4
V. MISCELLANEOUS.									
1. Printing, Stationery, Postages, Telephones, etc.	...	...	...	25	7	7			
2. Advertisements	...	...	...						
3. Insurance of Buildings, Equipment, Stores, etc.	...	...	...	12	4	3			
4. Garden	...	...	...	70	9	1			
5. Sundries	...	...	...	41	15	2			
							149	16	1
VI. ADMINISTRATION.									
1. Salaries	...	...	...	284	9	6			
2. Pensions	...	...	...						
3. Printing, Stationery, Postages, Telephones, etc.	...	...	...	29	19	4			
4. Advertisements	...	...	...						
5. Law Charges	...	...	...						
6. Auditor's Fees	...	...	...	3	3	0			
7. Sundries	...	...	...						
							317	11	10
Carried forward							2316	11	3



# ST. NICHOLAS (BRANCH) HOSPITAL INCOME AND EXPENDITURE ACCOUNT

## INCOME.

	£	s.	d.	£	s.	d.	£	s.	d.
Brought forward, Ordinary Income							1775	4	3

## EXTRAORDINARY.

I. LEGACIES ... ..

II. Other Extraordinary Income ...

Extraordinary Income

Total Income 1775 4 3

Balance, being excess of Total Expenditure over Total Income  
for the Year ... .. 890 15 9

£2666 0 0

## ST. NICHOLAS-AT-WADE, KENT.

35

FOR THE YEAR TO THE 31st DECEMBER, 1933 (Continued).

Cr.

## EXPENDITURE.

EXPENDITURE.				£	s.	d.	£	s.	d.
Brought forward							2316	11	3
/II. ESTABLISHMENT.									
Renewals and Repairs to Buildings and Plant				...			91	18	6
/III. FINANCE.									
1.	Interest	...	...	...					
2.	Appeals	...	...	...					
3.	Rent	...	...	...					
4.	Rates and Taxes	...	...	...	44	14	7		
							<u>44</u>	<u>14</u>	<u>7</u>
Ordinary Expenditure							2453	4	4
EXTRAORDINARY.									
I. CONTRIBUTIONS TO OTHER INSTITUTIONS				...					
I. OTHER EXTRAORDINARY EXPENDITURE.									
School				..	...	...	212	15	8
							<u>212</u>	<u>15</u>	<u>8</u>
Extraordinary Expenditure							212	15	8
Total Expenditure							2666	0	0

---

 £2666 0 0
 

---



## STATISTICAL TABLES.

## CHEYNE HOSPITAL FOR CHILDREN.

Statistics for Year to 31st December, 1933.

Compared with those of the previous Year.

## I.—IN-PATIENTS.

## A.—NUMBER OF BEDS AND IN-PATIENTS.

	Numbers in 1933	Numbers in previous year
1. Beds :		
(a) Complement at 31st December ... ..	71	71
(b) Average daily complement during the year	71	71
(c) Average daily number closed during the year, owing to :—		
(i) Re-building or extension schemes ...	—	—
(ii) Repairs, redecorations, cleaning or infection	90.13	1.9
(iii) Other causes ... ..	—	—
(d) Average daily number open during the year	70.87	69.1
(e) Average daily number occupied during the year	63.92	56.89
2. Number of In-Patients in the Hospital at beginning of year ... ..	68	57
3. Do. do. admitted during year	133	137
4. Do. do. in the Hospital at the end of the year ...	64	68
5. Average number of days each Patient was resident Ascertained by dividing the yearly total of daily counts, viz. :—23331, by the number of Patients treated to a conclusion, <i>i.e.</i> , (2) + (3) - (4).	170.29	165.27
6. Number of Patients admitted and discharged during the year who were resident for		
(i) only 1 day ...	—	—
(ii) 2 and 3 days ...	3	1

B.—ANNUAL EXPENDITURE ON IN-PATIENTS APART FROM THAT ON  
OUT-PATIENTS ; AVERAGE COST OF EACH IN-PATIENT PER WEEK ;  
AND AVERAGE COST OF EACH IN-PATIENT.

	1933.						Previous Year.						
	Expenditure on In-Patients (Pounds only)	Average cost of each In-Patient per week			Average Total cost of each In-Patient			Average cost of each In-Patient per week			Average Total cost of each In-Patient		
	£	£	s.	d.	£	s.	d.	£	s.	d.	£	s.	d.
(1) Provisions (in- cluding Board of Officials) ...	1250		7	6	9	2	6		8	4	9	17	2
(2) Surgery and Dispensary ...	326		1	11½	2	7	7		2	0	2	6	10
(3) Domestic ...	1596		9	7	11	13	0		9	0	10	12	8
(4) Salaries and Wages (Maint'ce)	2422		14	6½	17	13	7		16	2	19	0	9
(5) Miscellaneous	160		0	11½	1	3	4		0	11	1	2	1
(6) Administration	647		3	10½	4	14	5		4	8	5	10	2
Statistical Cost	6401	1	18	5	46	14	5	2	1	1	48	9	8
(7) Establishment : Renewals and Repairs ...	355		2	1½	2	11	10		2	5	2	17	6
(8) Finance ...	301		1	9½	2	3	11		1	11	2	5	4
Total Cost	7057	2	2	4	51	10	2	2	5	5	53	12	6

\* Average Cost per week found by dividing the amounts of Expenditure shewn against each heading and total by the average number of In-Patients treated to a conclusion during the year. (Nos. 2 plus 3 minus 4 in A above).

## STATISTICAL TABLES.

ST. NICHOLAS HOSPITAL (Branch of Cheyne Hospital).

Statistics for Year to 31st December, 1933.  
Compared with those of the previous Year.

## I.—IN-PATIENTS.

## A.—NUMBER OF BEDS AND IN-PATIENTS.

	Numbers in 1933	Numbers in previous year
1. Beds :		
(a) Complement at 31st December .. ..	33	33
(b) Average daily complement during the year	33	33
(c) Average daily number closed during the year, owing to :—		
(i) Re-building or extension schemes ..	—	—
(ii) Repairs, redecorations, cleaning or infection	.47	.06
(iii) Other causes .. .. .	—	—
(d) Average daily number open during the year	32.53	32.94
(e) Average daily number occupied during the year	32.14	32.04
2. Number of In-Patients in the Hospital at beginning of year .. ..	31	32
3. Do. do. admitted during year	48	40
4. Do. do. in the Hospital at the end of the year ..	27	31
5. Average number of days each Patient was resident Ascertained by dividing the yearly total of daily counts, viz. :—11733, by the number of Patients treated to a conclusion, <i>i.e.</i> , (2) + (3) - (4).	225.63	286.04
6. Number of Patients admitted and discharged during the year who were resident for		
(i) only 1 day ..	—	—
(ii) 2 and 3 days ..	—	—

B.—ANNUAL EXPENDITURE ON IN-PATIENTS APART FROM THAT ON  
OUT-PATIENTS; AVERAGE COST OF EACH IN-PATIENT PER WEEK;  
AND AVERAGE COST OF EACH IN-PATIENT.

	1933.								Previous Year.					
	Expenditure on In-patients (Pounds only)	Average cost of each In-Patient per week			Average Total cost of each In-Patient			Average cost of each In-Patient per week			Average Total cost of each In-Patient			
	£	£	s.	d.	£	s.	d.	£	s.	d.	£	s.	d.	
(1) Provisions (in- cluding Board of Officials ...	638		7	7½	12	5	4½		8	1½	16	11	8½	
(2) Surgery and Dispensary ...	37			5½		14	2½			6	1	0	6	
(3) Domestic ...	482		5	9	9	5	4½		6	2	12	11	8½	
(4) Salaries and Wages (Maint'ce)	692		8	3	13	6	1½		8	4	17	0	11½	
(5) Miscellaneous	150		1	9½	2	17	8		1	2½	2	9	9	
(6) Administration	317		3	9½	6	1	11		4	0½	8	4	10½	
<b>Statistical Cost</b>	2316		1	7	7½	44	10	9	1	8	4	57	19	6
(7) Establishment: Renewals and Repairs ...	92			1	1	15	4½		1	1	2	3	11	
(8) Finance ...	45				6½	17	3½			6	1	0	0	
<b>Total Cost</b>	2453		1	9	3	47	3	5	1	9	11	61	3	5

\*\* Average Cost per In-Patient found by dividing the amounts of Expenditure shewn against each heading and total by the number of In-Patients treated to a conclusion during the year (Nos. 2 plus 3 minus 4 in A above).



## LIST OF INVESTMENTS.

### (A) HOSPITAL ENDOWMENTS—

	£	s.	d.
£1,000 Great Central and Midland Railway 3½ per cent. Guaranteed Stock (for "Every Girls" Cot)			
at cost	1,030	0	0
£337 5s. 4d. Bank of England Stock (for "George Horatio" Cot)			
at cost	1,000	0	0
£1,037 13s. 2d. Natal Government 3 per cent. 1929/49 Stock (for "Wordsworth" Cot)			
at cost	1,000	0	0
£600 Southern Railway 5 per cent. Preference Stock (for "Mary Anna Harrison" Cot)			
at cost	1,007	11	0
£746 London and North Eastern Railway 4 per cent. 1st Preference Stock (for "Arminel Cary" Cot)			
at cost	1,002	10	0
£923 London and North Eastern Railway 3 per cent. Debenture Stock (for "The Children's" Cot)			
at cost	1,000	0	0
£977 Western Australia 3½ per cent. Stock 1920/35 (for "Katie Mackenzie Fairfax" Cot)			
at cost	1,000	0	0
£310 10s. New South Wales 3 per cent. Stock 1935 (for "Christian Helena Gildea" Cot)			
at cost	300	0	0
£628 Southern Railway 5 per cent. Preference Stock (for "Winifrid" Cot)			
at cost	1,000	0	0
£308 Nottingham Corp. 3 per cent. Redeem. Stock 1920/60 (for "Cranstoun Kerr" Cot)			
at cost	280	1	0
£900 London and North Eastern Railway 4 per cent. 2nd Guaranteed Stock (for "Jean Marjorie Campbell" Cot)			
at cost	1,076	13	6
£371 London and North Eastern Railway 4 per cent. 1st Preference Stock (for "R. H. Raphael" Cot)			
at cost	498	15	0
£1,015 Madras and Southern Mahratta Ry. 4 per cent. Debenture Stock 1938/aft. (for "Anne Fairfax" Cot)			
at cost	999	18	0
£1,053 3½ per cent. War Stock, 1952/aft. (for "Venetia Mexborough" Cot)			
at cost	1,000	0	0
£1,015 2s. 6d. Commonwealth of Australia 3¾ per cent. Registered Stock, 1948/53 (for "Amy Fairfax" Cot)			
at cost	1,000	0	0
£18 11s. 4d. India 4½ per cent. Stock, 1950/55 (for "Amy Fairfax" Cot)			
at cost	20	6	1
£20 3s. 5d. New South Wales 5¼ per cent. Inscribed Stock, 1947/57			
at cost	21	0	0
(for Annual Subscription of Miss M. E. Hamilton)			
£295 1s. 7d. 3½ per cent. War Stock, 1952/aft. (for "Winifred Margaret Young" Cot)			
at cost	300	0	0
£1,619 5s. 4d. 3 per cent. Local Loans (for "John Cory" Cot)			
at cost	1,000	0	0
Carried forward	14,536	14	7

## LIST OF INVESTMENTS—Continued.

	£	s.	d.	£	s.	d.
Brought forward				14,536	14	7
£963 16s. 1d. 5 per cent. Conversion Stock, 1944/64 (for "Henry Peech" Cot) at cost				1002	18	3
£401 10s. 8d. 3 per cent. Local Loans (for "Kate Courtney" Cot at cost				250	0	0
£1,250 3½ per cent. War Stock, 1952/aft. (for "St. Augustine" Cot) at cost				1,250	0	0
£959 14s. 3d. 3½ per cent. War Stock, 1952/aft. (for "Horace H. Nelson" Cot) at cost				1,000	0	0
£967 10s. 11d. 3½ per cent. War Stock, 1952/aft. (for "Sir Otto Beit" Cot) at cost				1,000	0	0
£229 13s. 0d. India 4½ per cent. Stock, 1950/55 (on a/c for "Chelsea Rotary Club" Cot)				250	0	0
Freehold Property, 63, Cheyne Walk, Chelsea, and Cross Keys Yard, part of total value of £6,263 17s. 6d., allocated as security for the following:—						
£1,000 for "Daniel Pidgeon" Cot	1,000	0	0			
£300 for "Sibell Evelyn" Cot	300	0	0			
£1,000 for "The Founder's" Cot	1,000	0	0			
£753 16s. for "Charles Kingsley" Cot	753	16	0			
£750 for "Violet" Cot	750	0	0			
£300 for "Hazel Isabel Rauthmell" Cot	300	0	0			
£300 for "Albert Jesse Skinner" Cot	300	0	0			
				4,403	16	0
				23,693	8	10
Less Proportion paid in excess of Endowments, transferred to (D) General Fund				145	8	6
				23,548	0	4
£192 Nottingham Corp. 3 per cent. Redeem. Stock (for Mrs. Montefiore's Legacy) at cost	200	0	0			
£500 3½ per cent. War Stock 1952/aft. at cost (for Sir J. Howard's Legacy)	500	0	0	700	0	0
				24,248	0	4

## THE FOUNDER'S GIFT

INVESTMENTS ON ACCOUNT OF "THE  
FOUNDER'S GIFT":—

£1,500 Great Western Railway 5 per cent. Guaranteed Stock at cost	2,039	6	6			
£1,524 10s. 6d. 5 per cent. Conversion Stock 1944/64 at cost	1,600	0	0			
£3,100 East Indian Railway 3 per cent. New Debenture Stock at cost	2,824	18	0			
£1,000 Great Central and Midland Railway 3½ per cent. Guaranteed Stock at cost	1,040	1	0			
£3,125 London Midland and Scottish Railway 4 per cent. Debenture Stock at cost	3,987	11	0			
Carried forward	£11,491	16	6	24,248	0	4



	£	s.	d.	£	s.	d.
Brought forward ...	11,491	16	6	24,248	0	4
£1,500 Canadian Pacific Railway 4 per cent. Perpetual Consolidated Debenture Stock at cost	1,665	19	3			
£1,600 Southern Railway 5 per cent. Preference Stock at cost	2,412	3	6			
£3,000 London County Consolidated 3 per cent. Stock, 1920/aft. at cost	2,805	1	0			
£3,000 Metropolitan Water (B) Stock 1934/2003 at cost	2,926	18	6			
£400 India 3 per cent. Stock at cost	311	0	0			
£7,000 Mortgage Advance on Freehold Property: Brewers Green Mews, etc.	7,000	0	0			
				28,612	18	9

## (D) GENERAL FUND.

£430 E. Lacon & Co., Ltd., Mortgage Debenture Stock at cost	488	1	0
£1,050 Bombay, Baroda and Central India Railway Capital Stock at cost	1,055	8	10
£500 Western Australian Government 3½ per cent. Stock (1940-1960) at cost	495	13	8
£191 London and North Eastern Railway 4 per cent. 1st Preference Stock at cost	250	0	0
£147 3½ per cent. War Stock, 1952/aft. at cost	140	0	0
£1,000 4 per cent. Funding Loan, 1960-1990 at cost	910	0	0

(Market value as at 31/12/33, £3,435 4s. 9d.) 3,339 3 6

Proportion of Investments as per (A) transferred 145 8 6

3,484 12 0

	£	s.	d.
Cross Keys Yard (purchased with 63, Cheyne Walk) Proportion of Total Cost, as at 31st December, 1912 ...	3,501	10	6
"Old Church Studio" and Porter's Lodge, Cost to 31st Decem- ber, 1917 ...	1,362	16	1
	4,864	6	7

Less Amount allocated as  
security for Hospital En-  
dowments ...

4,403 16 0

460 10 7

3,945 2 7

£56,806 1 8

## ENDOWED COTS.

December 31st, 1933.

(Endowments Invested. Dividends *per* Trustees of Cheyne Hospital.)

	£	s.	d.	£	s.	d.
Winifrid (Free) ... ..	1000	0	0			
Every Girls' (Free) ... ..	1000	0	0			
Children's Cot (Free) ... ..	1000	0	0			
George Horatio (Free) ... ..	1000	0	0			
Arminel Cary (Free) ... ..	1000	0	0			
Wordsworth (Free) ... ..	1000	0	0			
Mary Anna Harrison (Free) ... ..	1000	0	0			
Daniel Pidgeon (Free) ... ..	1000	0	0			
Katie Mackenzie Fairfax (Free) ... ..	1000	0	0			
The Founder's Cot (Free) ... ..	1000	0	0			
Jean Marjorie Campbell (Free) ... ..	1000	0	0			
Anne Fairfax (Free) ... ..	1000	0	0			
Venetia Mexborough (Free) ... ..	1000	0	0			
Amy Fairfax (Free) ... ..	1000	0	0			
John Cory (Free) ... ..	1000	0	0			
Horace H. Nelson (Free) ... ..	1000	0	0			
Sir Otto Beit (Free) ... ..	1000	0	0			
Henry Peech (Free) ... ..	1002	18	3			
St. Augustine (Free), at St. Nicholas ... ..	1250	0	0			
Rotary Club of Chelsea (on a/c) ... ..	250	0	0			
Charles Kingsley (Half-payment) ... ..	753	16	0			
Violet (Half-payment) ... ..	750	0	0			
				21006	14	3
Christian Helena Gildea (Life. Free) ... ..	300	0	0			
Sibell Evelyn (Life. Free) ... ..	300	0	0			
Richard H. Raphael (Life. Free) ... ..	500	0	0			
Hazel Isabel Rauthmell (Life. Free) ... ..	300	0	0			
Albert Jesse Skinner (Life. Free) ... ..	300	0	0			
Winifred Margaret Young (Life. Free) ... ..	300	0	0			
Cranstoun-Kerr (Life.) (Half Payment) ... ..	250	0	0			
Kate Courtney (Named in perpetuity) ... ..	250	0	0	2500	0	0
				£23506	14	3

## AMOUNTS INVESTED FOR ENDOWMENT PURPOSES

DURING 1933 (see Balance Sheet, page 26).

	£	s.	d.
Henry Peech Cot Endowment (completion) ... ..	250	0	0
Chelsea Rotary Club Cot Endowment Fund (on a/c.) ... ..	50	0	0
Amy Fairfax Cot Endowment (Bonus <i>re</i> Stock Conversion) ... ..	20	6	1
Cranstoun Kerr Cot Endowment Fund (Interest) ... ..	13	7	3
TOTAL as per Balance Sheet ... ..	£333	13	4



# ENDOWED AND SUBSCRIBED COTS.

AS AT DECEMBER 31ST, 1933.

## AT CHEYNE HOSPITAL.

### THE ENDOWED COTS (£1,000).

#### THE "WINIFRID" COT,

Instituted in December, 1882, by Mr. and Mrs. Wilfrid Loder,  
and Endowed by Bequest of the late Wilfrid Loder, Esq.

#### THE "EVERY GIRLS" COT,

Endowed 1883, by Miss Alicia Leith and some friends.

#### THE "CHILDREN'S" COT,

Instituted January, 1884, and endowed by Children's Subscriptions  
and Collections made by Children of St. Peter's, Cranley Gardens,  
Mrs. Hollams, The Children of Shere, The Boys of Bengoe School  
and others. Hon. Treasurer, Miss Evelyn Pearse.

#### THE "GEORGE HORATIO" COT,

Endowed in 1886 by Mr. and Mrs. Henry Lucas, in memory of their  
little Son, George Horatio Lucas.

#### THE "ARMINEL CARY" COT,

Instituted in September, 1889, and Endowed in February, 1900, by Colonel  
and Mrs. Lucius Cary, in memory of their little Daughter, Arminel Cary.

#### THE "WORDSWORTH" COT,

Named May, 1891, and Endowed January, 1898, from the Proceeds of  
Entertainments given by the Pupils of Mrs. Henry Wordsworth.

#### THE "MARY ANNA HARRISON" COT,

Endowed by the late Lawrence Harrison, Esq., in memory of his Wife,  
January 1st, 1899.

#### THE "DANIEL PIDGEON" COT,

In Memoriam, 1900. Permanently Endowed January, 1901, by J. M. P.

#### THE "KATIE MACKENZIE FAIRFAX" COT,

Founded 21st January, 1902, by John Mackenzie Fairfax, Esq.

#### "THE FOUNDER'S" COT,

Instituted by the late Mr. Wickham Flower, and completed  
7th November, 1906.

**THE "JEAN MARJORIE CAMPBELL" COT,**

Endowed by the late Miss Jane Arabella Campbell, in memory of her Niece, Jean Marjorie Campbell, 18th March, 1907.

**THE "ANNE FAIRFAX" COT,**

Endowed 13th December, 1913, in memory of Mrs. Anne Fairfax, by her two Daughters.

**THE "VENETIA MEXBOROUGH" COT,**

Endowed 1917 under the Will of the late Countess of Mexborough.

**THE "AMY FAIRFAX" COT,**

Endowed 21st January, 1920, by Bequest of the late Miss Amy Fairfax.

**THE "JOHN CORY" COT,**

Endowed September, 1929, by the Trustees of the Will of the late John Cory, Esq.

**THE "HORACE H. NELSON" COT,**

Endowed 9th March, 1931, by Mrs. H. H. Nelson, in memory of her Husband. (See also page 45.)

**THE "SIR OTTO BEIT" COT,**

Endowed 6th June, 1931, by an Award from the Executors of the late Sir Otto Beit, Bart.

**THE "HENRY PEECH" COT,**

Founded 1929—1933, from Awards made by Mrs. V. M. Peech, the Executrix of the Will of the late Henry Pecch, Esq.

---

**THE "CHELSEA ROTARY CLUB" COT. (Pending).**

To be endowed by Instalments by the Rotary Club of Chelsea.  
Amount received to 31/12/33 £250.

---

**ENDOWED COTS (Half Payment. £750).**

(Patients charged 3/6 per week instead of 7/-.)

**THE "CHARLES KINGSLEY" COT,**

Founded July 1, 1878, in memory of the late Charles Kingsley.

**THE "VIOLET" COT,**

Founded February, 1884. In Memoriam.



## LIFE COTS (£300).—FREE.

## THE "LUCY ELAM" COT (Complimentary).

Presented by the Committee to Miss Elam, in recognition of her services in organising the Sale of Work in November, 1896, by which over £400 was obtained.

## THE "CHRISTIAN HELENA GILDEA" COT,

Established 20th December, 1901, by the Members of "The Children's Salon," in connection with "The Gentlewoman" and christened in the name of the Daughter of the Founder and Chairman of the "Soldiers and Sailors" Families Association.

## THE "SIBELL EVELYN" COT,

Endowed 1901 by the Hon. Mrs. Lumley for lifetime. In memory of Sibell Evelyn Lumley, Daughter of (the late) Brig.-General The Honble. Osbert and Mrs. Lumley.

## "THE RICHARD H. RAPHAEL" COT,

Instituted 2nd March, 1910, by Mrs. R. H. Raphael, in memory of her husband.

## THE "HAZEL ISABEL RAUTHMELL" COT.

Instituted 18th April, 1923, by Henry A. Rauthmell, Esq., in memory of his daughter.

## THE "ALBERT JESSE SKINNER" COT,

Instituted in 1924 by Mrs. Elizabeth Skinner in memory of her son.

## THE "WINIFRED MARGARET YOUNG" COT,

Instituted in 1929 by Miss Ethel S. Young in memory of her sister.

## HALF-PAYMENT LIFE COT.

## THE "CRANSTOUN KERR" COT,

Instituted June 9th, 1879, by Miss Kerr and Miss A. Kerr, and Endowed May 10th, 1909, in their memory during the lifetime of Miss M. Kerr (now Mrs. Clifford Gilbert, of the Manor House, Wroxham, Norfolk).

(To be ultimately converted into a permanently Endowed Half-Payment Cot (£750) by accumulation at compound interest.)

Total as at 31/12/33—£458 17s. 3d.

# NAMED COTS (10).

## THE "LILY" COT (Complimentary).

## THE "COL. JOHN KELLY HOLDSWORTH, R.A., MEMORIAL" COT (Complimentary),

Named by the Committee in 1915, £250 having been granted by the Executors of the late Mrs. Mary Kelly Holdsworth.

## THE "WINIFRED SLINGSBY" COT,

Named 30th April, 1919, by Miss El. S. Peirse-Duncombe, by a gift of £250 in memory of her sister, Mrs. J. G. Eustace.

## THE "ETHEL SLINGSBY" COT,

Named in 1922, by Miss El. S. Peirse-Duncombe, by a gift of £250 in memory of her sister.

## THE "ST. PETER'S, CRANLEY GARDENS, WAR MEMORIAL" COT,

Named in 1922 by a gift of £400 from the Trustees, in memory of those Members of the Church who fell in the Great War.

## THE "HORACE NELSON" COT,

Named in November, 1924, by Mr. and Mrs. Horace H. Nelson by a gift of £1,000 4% Funding Loan in memory of their son. (See also page 43.)

## THE "DORA" COT,

Named in 1925 by The Hon. Mrs. Walter Stopford by a gift of £250 in memory of her daughter, Dora Nicholson.

## THE "ELEANOR MARY TURNER" COT,

Named in 1927 by the late Alfred M. Turner, Esq., by a gift of £1,000 in memory of his wife.

## THE "WILLIAM BROWN HEXTALL" COT,

Named in 1927 by the Committee in recognition of an Award of £500 by the Executors of the Will of the late William Brown Hextall, Esq., of Ealing.

## "THE KATE COURTNEY" COT,

Named 26th February, 1929, in memory of Lady Courtney of Penwith, by an Award of £250 from a Memorial Subscription Fund.

# SUBSCRIBERS' COTS (FREE. £40 PER ANNUM).

## THE "CARLYLE SCHOOL" COT,

Instituted during 1926 by Miss A. D. Crosby, B.A., and now maintained annually by the Pupils of Carlyle School for Girls, Chelsea.



## SUBSCRIBERS' COTS

(HALF PAYMENT. £30 PER ANNUM).

(Patients charged 3/6 per week instead of 7/-.)

## THE "KENSINGTON" COT.

Instituted May 9th, 1882, and supported annually by the Children, past and present, of Kensington, by the offertories at the Children's Festival Services at St. Mary Abbots' Church, and by a few other Friends.

## THE "DOROTHY" COT.

Instituted August, 1891, and supported annually by J. Douglas Charrington, Esq.

## THE "PRUDENTIAL ASSURANCE COMPANY, Ltd." COTS (2).

First Cot—Instituted 16th January, 1926;

Second Cot—Instituted 19th February, 1927,

and supported annually by the above named Company.

## AT ST. NICHOLAS HOSPITAL.

## LIST OF ENDOWED AND NAMED COTS.

## ENDOWED COT.—FREE.

## THE "ST. AUGUSTINE" COT.

Instituted 16th June, 1920, by "The St. Nicholas Cot League" and maintained annually from 1921 by Mr. Edward Lauderdale Ramsay, of Queensland, Australia, until permanently Endowed by him in May, 1930.

## NAMED COTS.

## THE "VAUGHAN" COT.

Instituted February, 1910, by Mrs. Batt-Mills, in loving memory of her son, G. Vaughan Batt-Mills, R.N.

## THE "AGNES" COT.

Instituted November, 1932, by Mrs. Travers Rountree, in remembrance of her Mother, Mrs. Batt-Mills.

## SUBSCRIBED COTS.

## THE "ST. NICHOLAS" COT.

Instituted December, 1916, by "The St. Nicholas Cot League," and maintained annually.

## THE "ST. THOMAS" COT.

Instituted December, 1919, by "The St. Nicholas Cot League," and maintained annually.

## LIST OF GOVERNORS.

## LEGACIES.

Abrahams, Alphonse, M., Esq.  
 Bell, Miss Amy C.  
 Bird, E. E., Esq.  
 Bodkin, K.C., Sir Archibald  
 Conway, C. J., Esq.  
 Edge, H. T., Esq.  
 Elliott Lockhart, Mrs. Gilbert  
 Evans, T. H. R., Esq.  
 Hall, Miss C. V.  
 Higgins, Frank, Esq.  
 Hubbard, Miss M. M. E.  
 Huntsman, James E., Esq.  
 Loder, Mrs. Wilfred.  
 McGuffie, Thomas C., Esq.  
 Montefiore, Claude, Esq.  
 Mortimer, Stanley, Esq.  
 Mott, Thomas, Esq.

Mumford, Sidney L., Esq.  
 Peech, Mrs. V. M.  
 Rowe, George William, Esq.  
 Salomons, Mrs. L.  
 Saunders, Major.  
 Scott, H. C., Esq.  
 Shoubridge, H., Esq.  
 Skinner, Colonel, T. H.  
 Spencer, Samuel, Esq.  
 Spring-Rice, Miss  
 Thomas, Gilbert W., Esq.  
 Tomkins, F. O., Esq.  
 Underwood, W. M., Esq.  
 Wiadison, John, Esq.  
 Whitby, Humphrey, Rev.  
 Winter, Moritz, Esq.

## DONATIONS.

Atkin, Sannyer, Esq.  
 "A Friend."  
 Adler, Mrs.  
 Brenton, Mrs.  
 Bullivant, F. A., Esq.  
 Cohen, Miss Constance  
 Fishmongers, Worshipful Company of  
 Harrison, Leonard F., Esq.  
 Hore, E., Esq.  
 Isaacs, I., Esq.  
 "MARNIE."

Metropolitan Hospital Sunday  
 Fund.  
 Ramsay, E. Lauderdale, Esq.  
 Raphael, Mrs. R. H.  
 Sargent, Miss Emily  
 Smith's (Kensington Estate)  
 Charity.  
 Streatfeild, Mrs. E. J.  
 Somerleyton, The Rt. Hon. Lord.  
 Young, Douglas S., Esq.

## SUBSCRIPTIONS.

Cromer, The Rt. Honble. The Earl  
 of, G.C.B., G.C.I.E., G.C.V.O.  
 Harrison, Leonard F., Esq.  
 Hichens, Harrison, Woolston & Co.,  
 Messrs.  
 Hyde-Thomson, R. H., Esq.  
 London, Midland & Scottish Railway  
 Hospital Fund.

Lucas, Mrs. Henry.  
 Poole, Sir Reginald  
 Pritchard, Hugh M., Esq.  
 Sinclair, Bt., C.M.G., M.P., Major  
 The Rt. Hon. Sir Archibald.



## LIST OF SUBSCRIPTIONS AND DONATIONS

Received during the Year ending December 31st, 1933.

\* Names marked with an asterisk are Governors.  
(For other Governors, see separate List.)

## TO SUBSCRIBERS.

Early advice of changes of address, or of any inaccuracies in the following list, is particularly requested, and should be sent to the Secretary.

## SPECIAL CHRISTMAS DONATIONS.

	£	s.	d.
His Majesty The King ... ..	5	0	0
H.R.H. The Prince of Wales ... ..	5	0	0

## CHEYNE HOSPITAL.

	Subs.			Dons.		
	£	s.	d.	£	s.	d.
A.M. ... ..	5	5	0			
Aldous & Campbell, Ltd., Messrs. ...				1	1	0
Alexandra Day Committee, The ...				125	0	0
Anonymous (E.B.) ... ..	1	1	0			
Anonymous (W.P.) ... ..				1	0	0
Anonymous ... ..				2	0	0
Anonymous (E.J.C.) ... ..				1	1	0
Anonymous ("M.") ... ..				1	0	0
Anonymous ... ..				3	0	0
Anonymous ... ..				1	5	0
Anonymous ... ..				50	0	0
Anonymous (Fulham) ... ..				0	2	6
Anonymous (Westminster) ... ..				1	1	0
Army & Navy Co-Operative Society, Ltd. per D. S. Young, Esq. ... ..				5	5	0
Armourers & Brasiers, The Worshipful Company of ... ..						
Ashby & Co., Messrs. E. (1932/3) ...	2	0	0	1	0	0
Asprey, Mrs. ... ..	1	1	0			
Atkin, S., Esq. ... ..	1	1	0			
Bailey & Son, Ltd., W. H., Messrs. ...	0	10	6			
Bain & Co., Ltd., Messrs. Wm., per D. S. Young, Esq. ... ..				1	1	0
Banon, Mrs. Lionel ... ..	3	0	0			
Banon, C.B., Brig.-Gen. Lionel ... ..	1	1	0			
Barnard, Miss Marion A. ... ..	2	2	0			
Barclay's Bank, Ltd., Messrs. ... ..				52	10	0
Barrell, Mrs. ... ..				0	2	6
Bateson, E., Esq. ... ..	5	5	0			
Batten, Mrs. Mount ... ..	2	2	0			
Carried forward ... ..	£24	8	6	246	9	0

				Subs.			Dons.		
				£	s.	d.	£	s.	d.
Brought forward	...	...	...	24	8	6	246	9	0
Battiscombe, Miss	...	...	...	0	10	6			
Beddoes, Mrs.	...	...	...	1	1	0			
Benson, Lt.-Col. H. W.	...	...	...	2	2	0			
Bernhard Baron Charitable Trust	...	...	...				100	0	0
Bevan, Miss E. G.	...	...	...	3	3	0			
Bevington, Mrs. A.	...	...	...	1	1	0			
Biddulph, Miss F.	...	...	...	2	2	0			
Bigham, K.B.E., C.B., The Hon. Sir Trevor	...	...	...						
Bingley, Lady	...	...	...	1	0	0			
Biofeld, Mrs.	...	...	...	1	0	0			
Bourne, Mrs. W. W.	...	...	...	5	5	0			
Blue Star Line, Messrs. (Passenger Manager's Office)	...	...	...				3	3	0
Blunt, Reginald, Esq., C.B.E.	...	...	...	2	2	0			
Boots The Chemists, Ltd.	...	...	...	2	2	0			
Bounds, J. H., Esq.	...	...	...	1	1	0			
British Charities Association	...	...	...				0	10	0
Brooke, Mrs. M. V.	...	...	...	2	2	0			
Burgess, T. B., Esq.	...	...	...				2	2	0
Burgoine & Sons, Ltd., Messrs. H., per D. S. Young, Esq.	...	...	...				1	1	0
Butler, Miss Betty	...	...	...						
Byrne, Mrs.	...	...	...	2	2	0			
Calendars, Sale of	...	...	...				7	11	9
Carter, Mrs. Aubrey	...	...	...	1	1	0			
Casson, D.B.E., Dame Sybil Thorndike	...	...	...	5	0	0			
Castle Laundry, The Proprietors of	...	...	...	3	3	0			
Cellactite and British Uralite, Ltd., Messrs., per D. S. Young, Esq.	...	...	...				2	2	0
Chapman, Mrs. D. P.	...	...	...	2	2	0			
"Chelsea Quarto" Sale of (per Chelsea Peace Shop)	...	...	...				19	1	
Chibnall's Bakeries, Ltd., Messrs.	...	...	...						
Clay, Mrs. C. F.	...	...	...	1	1	0			
Cochrane, Miss E. Marion	...	...	...	2	2	0			
Cohen, Miss F. L.	...	...	...	1	1	0			
Copeman, Mrs. W. S. C.	...	...	...	3	3	0			
Cotton, Miss Eileen	...	...	...				1	1	0
*Cromer, The Rt. Hon. The Earl of, G.C.B., G.C.I.E., G.C.V.O. (Chairman)	...	...	...	10	10	0			
Curtis-Hayward, Miss	...	...	...	0	10	0			
Darch, Mrs.	...	...	...	1	0	0			
Davidson, Lady	...	...	...	2	2	0			
Davies, Miss B. O.	...	...	...				5	0	0
Dawnay & Son, Ltd., Messrs. A. S., per D. S. Young, Esq.	...	...	...				2	2	0
Diespecker & Co., Ltd., Messrs., per D. S. Young, Esq.	...	...	...				2	2	0
Deane, Miss C. Maude	...	...	...	1	1	0			
Delmar Charitable Trustees	...	...	...				20	0	0
Denny, Mott & Dickson, Ltd., Messrs.	...	...	...	3	3	0			
Carried forward	...	...	...	£88	1	0	394	2	10



				Subs.			Dons.		
				£	s.	d.	£	s.	d.
Brought forward ...				88	1	0	394	2	10
Docker, Mrs. Alfred	...	...	...	1	1	0			
Dunbar, Miss E. C.	...	...	...	0	5	0			
Dunn, Mr. and Mrs. W. N.	...	...	...				2	0	0
Dyers, The Worshipful Company of	...	...	...	2	2	0			
Dyne, Miss V. E.	...	...	...	1	1	0			
Eastman's, Ltd., Messrs. ...									
Edwards, Miss Ethel M.	...	...	...	1	1	0			
Elgee, Mrs. D.	...	...	...	0	10	6			
Elliott, Mrs. T. R.	...	...	...	2	2	0			
Elliston, Mr. and Mrs. Thomas	...	...	...	2	2	0			
Ernst, Mrs. Edward H. (Ohio, U.S.A.)	...	...	...	1	18	4			
Evans, Mrs. Richardson	...	...	...				1	0	0
Eves, Mrs. W. Heath	...	...	...	2	2	0			
Farley, Major R. L. (Proceeds of Dance)							11	16	8
Farmer & Son, Ltd., Messrs. S. W.									
(per D. S. Young, Esq.) ...							1	1	0
Feilden, Miss M. G.	...	...	...	2	2	0			
Field, Miss	...	...	...	1	1	0			
Fielding & Co., Ltd., Messrs. W. Kay									
(per D. S. Young, Esq.) ...							10	0	
Fisher, Edwin, Esq.	...	...	...	7	7	0			
Fishmongers, The Worshipful Company of									
Fleet, D.L., J.P., Algernon M., Esq.	...	...	...	5	5	0			
Fleming, Mrs.	...	...	...	0	10	0			
Fonteyn & Co., Ltd., Messrs. Humphreys									
(per D. S. Young, Esq.) ...							1	1	0
Forbes, Miss	...	...	...	2	2	0			
Founders, Worshipful Company of							10	10	0
Foster, Mrs. Hubert	...	...	...	2	2	0			
Franks, Mrs. E. A.	...	...	...	2	2	0			
Fraser, Miss	...	...	...	1	1	0			
French, Mrs. C.	...	...	...	1	1	0			
Gibbes, Mrs. M. G.				1	1	0			
Gibbon, Mrs. C. Henry	...	...	...	3	3	0			
Gibbon, Mr. Henry	...	...	...	0	10	6			
Gibbon, Miss May	...	...	...	0	10	6			
Gilmour, J., Esq., per D. S. Young, Esq.	...	...	...				1	0	0
Goldsmiths, The Worshipful Company of									
Gordon-Lennox, Lady Caroline	...	...	...	1	1	0			
Gould, Miss Frances	...	...	...				2	2	0
Granet, Hon. Lady	...	...	...	2	2	0			
Griffiths, W., Esq., per D. S. Young, Esq.	...	...	...				0	10	0
Green, Major W. Howe	...	...	...				2	10	0
Green, Miss Hilda	...	...	...	0	10	0			
Gretton, Miss Muriel	...	...	...	3	3	0			
Grocers, The Worshipful Company of									
Guinness, Henry S., Esq.	...	...	...				1	0	0
Guernsey Children's Aid Society	...	...	...				5	0	0
Hamilton, Miss M. E. (Interest on Investment)				1	1	2			
Carried forward ...				£140	1	0	434	3	6

				Subs.			Dons.		
				£	s.	d.	£	s.	d.
Brought forward ...				140	1	0	434	3	6
Hall, Miss C. J.	...	...	...	0	5	0			
Hankey, Mrs. E.	...	...	...	2	2	0			
Hardy, Mrs. Claude	...	...	...	1	0	0			
*Harrison, Leonard F., Esq.	...	...	...	14	0	0			
Harrold, Mrs. Leonard	...	...	...	1	1	0			
*Hichens, Harrison, Woolston & Co., Messrs.	...	...	...	10	10	0			
Hichens, Mrs. Lionel	...	...	...	5	5	0			
Higgs, Ltd., Messrs. F. & H. F., per D. S. Young, Esq.	...	...	...				2	2	0
Highton, Mrs. D. C.	...	...	...	1	1	0			
Hill, Miss Primrose	...	...	...	1	1	0			
Hollams, Miss (Collected by)									
Hollams, F. W., Esq.	...	£1	0 0						
Fox, Mrs.	...	...	1 0 0						
Hollams, Miss	...	...	1 0 0						
				3	0	0			
Hollow Steel Floor Co., Ltd., Messrs. The, per D. S. Young, Esq.	...	...	...				1	1	0
Holt, Miss Annie	...	...	...	2	2	0			
Hood, Mrs.	...	...	...	2	0	0			
Hornby, C. H. St. John, Esq.	...	...	...	2	2	0			
Horne, Lady (Edgar)	...	...	...	2	2	0			
H.S.A. Group Secretaries Association (Battersea and Chelsea Branch)	...	...	...				1	0	0
Hubbard, Hon. Evelyn	...	...	...	3	3	0			
*Hyde-Thomson, R. H., Esq.	...	...	...	10	10	0			
Hyde-Thomson, Mrs. E. K.	...	...	...				5	5	0
Jebb, Mrs.	...	...	...	2	2	0			
Johnston, Mrs. F. Alexander	...	...	...	5	0	0			
Jones, Lady	...	...	...	2	2	0			
Jones, Sydney E., Esq.	...	...	...	2	2	0			
Jones & Co., Ltd., Messrs. T. C., per D. S. Young, Esq.	...	...	...				1	1	0
Joyce, Miss	...	...	...				0	10	0
"J.P.D.M."	...	...	...				1	0	0
Keely, Mrs. A. G.	...	...	...				1	1	0
Kelvin Construction Co., Ltd., Messrs., per D. S. Young, Esq.	...	...	...				5	0	0
Kittons, Horace, Esq.	...	...	...				0	10	0
Klein, Sydney T., Esq.	...	...	...				5	0	0
Large, Albert W., Esq.	...	...	...				5	5	0
Le Bas, Mrs.	...	...	...	1	1	0			
Legard, Frances, Lady	...	...	...	3	3	0			
Leith, Miss A. A.	...	...	...	1	1	0			
Leith, Miss Emily	...	...	...	1	1	0			
Lewis & Lewis, Messrs.	...	...	...	5	5	0			
Liddell, Mrs. A. F.	...	...	...	2	2	0			
Liddell, Hon. Mrs. Guy	...	...	...	5	5	0			
Lion Hospital Aid Society	...	...	...				5	5	0
Lion Hospital Aid Society—Amateur Boxing Tournament	...	...	...				15	13	0
Carried forward ...				£231	9	0	483	16	6



				Subs.			Dons.		
				£	s.	d.	£	s.	d.
Brought forward	...	...	...	231	9	0	483	16	6
Littleton, Hon. Mrs. Henry	...	...	...						
*London, Midland & Scottish Railway	...	...	...						
Hospital Fund	...	...	...	21	0	0			
Lovell, Miss	...	...	...	1	1	0			
Lovell, P. W., Esq.	...	...	...	1	1	0			
Loveridge, A. F., Esq.	...	...	...				3	3	0
Lowenthal, Miss	...	...	...	1	0	0			
*Lucas, Mrs. Henry	...	...	...	10	10	0			
Lyttelton, The Hon. Lady	...	...	...	1	1	0			
MacGregor, R. M., Esq.	...	...	...	3	3	0	3	3	0
MacLeay, Mrs. Oswell	...	...	...	5	0	0			
Matthey, Miss Violet	...	...	...	1	1	0			
Maypole Dairy Co., Ltd.	...	...	...	2	2	0			
Mc Intyre & Sons, Ltd., Messrs.	...	...	...						
per D. S. Young, Esq.	...	...	...				5	5	0
Mellersh, Miss M.	...	...	...	0	5	0			
Mellersh, Miss Agnes	...	...	...	0	5	0			
Mellersh, Miss Isabel	...	...	...	0	5	0			
Mellor, Mrs. F. H.	...	...	...	2	0	0			
Midland Bank, Ltd., Messrs.,	...	...	...						
per D. S. Young, Esq.	...	...	...				2	2	0
Mitchell, A. C., Esq.	...	...	...				0	5	0
Montrésor, Miss F. F. (Received in 1934)	...	...	...						
Morris, Mrs. Percy	...	...	...	5	5	0			
Neame, Mrs. G. Harding	...	...	...				2	2	0
Nugent, Mrs. George (Paid in 1934)	...	...	...						
Page, Miss E.	...	...	...	0	10	0			
Paley, Colonel Edward	...	...	...				2	2	0
Palmer, Miss	...	...	...	2	0	0			
Palmer & Co., Messrs. T. W.,	...	...	...						
per D. S. Young, Esq.	...	...	...				1	1	0
Pauling, Ltd., Messrs. George,	...	...	...						
per D. S. Young, Esq.	...	...	...				1	1	0
Peile, Miss Norah	...	...	...	1	1	0			
Peirse-Duncombe, Miss	...	...	...	1	1	0			
Penn, Mrs. C. M.	...	...	...	1	7	1			
Pickford, The Hon. Dorothy	...	...	...	1	1	0			
Pickford, C.B.E., M.P., The Hon. Mary	...	...	...						
(the late)	...	...	...	1	1	0			
Playfair, Miss	...	...	...	2	2	0			
Playfair Trust Fund	...	...	...				5	5	0
*Poole, Sir Reginald	...	...	...	10	10	0			
"Pound Day" Donations	...	...	...				334	11	8
Power, Miss L. D.	...	...	...	1	1	0			
*Pritchard, Hugh M., Esq.	...	...	...	10	10	0			
Probert, Fredk., Esq.	...	...	...				0	5	0
Pyddoke, R.N., Captain Charles	...	...	...				5	0	0
Radcliffe, Mrs. (Paid in 1932)	...	...	...						
Carried forward	...	...	...	£318	12	1	849	2	2

			Subs.			Dons.		
			£	s.	d.	£	s.	d.
Brought forward	...	...	318	12	1	849	2	2
Raphael, Miss Marjorie	...	...	2	2	0			
Richards & Sons, Ltd., Messrs. Edward,	...	...						
per D. S. Young, Esq.	...	...				1	1	0
Roller, William Eyton, Esq., jun.	...	...	5	0	0			
Rommel, Miss D.	...	...	0	5	0			
Roof Ward Sale, per Sister M. J. Heany	...	...				30	0	0
Roy, Roderick and Tony (In memory of)	...	...	3	2	0			
Royds, J. F. T., Esq.	...	...	1	1	0			
Russell, Hon. Maud	...	...	1	1	0			
Ruttledge, Miss M.	...	...	1	10	0			
Ryley, Mrs. C. E. Beresford	...	...						
Saddlers, The Worshipful Company of	...	...	5	5	0			
Safety Tread Syndicate, Ltd., Messrs., The	...	...						
per D. S. Young, Esq.	...	...				0	10	6
Sainsbury, Mrs.	...	...	1	1	0			
Samuel, Miss Evelyn H.	...	...	1	1	0			
Sargent, Miss Emily	...	...	1	1	0			
Saunders, Mrs. Ellen M.	...	...	1	1	0			
S.C.C. (Forest Row)	...	...						
Schuster, Mrs. Ernest	...	...	2	16	0			
Scott-Moncrieff, Lady	...	...	2	10	0			
Scott, Ltd., Messrs. Walter,	...	...						
per D. S. Young, Esq.	...	...				1	1	0
Seligman, Mrs. W. L.	...	...	1	1	0			
Shaw Stewart, Mrs. Ida	...	...	0	10	0			
Sidey, Mrs. C. Lyon	...	...	3	3	0			
Sir Walter St. John's School, Battersea, Boys of	...	...				2	2	0
*Sinclair, Bart., C.M.G., M.P., Major	...	...						
The Right Hon. Sir Archibald	...	...	10	10	0			
Skinner, The Worshipful Company of	...	...				10	10	0
Smith, W. E., Esq., per D. S. Young, Esq.	...	...				2	2	0
Smith, Lady Wyldbore	...	...	2	2	0			
Smith, Mrs. Reginald	...	...	1	1	0			
Smith's (Kensington Estate) Charity Trustees	...	...						
Somerville-Bernard Constructor Co., The,	...	...						
per D. S. Young, Esq.	...	...				1	1	0
Spanjer, J., Esq.	...	...	1	0	0			
Snell, Lt.-Colonel F. W.	...	...				1	1	0
Spring-Rice, Miss G. S.	...	...	1	1	0			
Stainbank, Miss	...	...	2	2	0			
Steer, P. W., Esq.	...	...	2	2	0			
Stevens, J., Esq., per D. S. Young, Esq.	...	...				1	1	0
Stoop, Mrs.	...	...						
Stopford, Hon. Mrs. Walter	...	...				5	0	0
Strange, Miss L. G.	...	...	2	2	0			
Strickland, Lady Mary	...	...	1	1	0			
Strickland, A. F., Esq.	...	...	5	5	0			
Streatfeild, Mrs. Lucy	...	...	1	0	0			
Strong, Miss A. J.	...	...	2	2	0			
Tate, Mrs. Pennell	...	...	0	10	6			
Taylor, Mrs. Harry	...	...				1	0	0
Carried forward	...	...	£384	0	7	905	11	8



				Subs.			Dons.		
				£	s.	d.	£	s.	d.
Brought forward	...	...	...	384	0	7	905	11	8
Tinfoil, Sale of	...	...	...				2	16	0
Trollope, Miss B.	...	...	...	1	1	0			
Templeton, Dr. and Mrs., per D. S. Young, Esq.	...	...	...				3	3	0
Trollope & Colls, Ltd., Messrs., per D. S. Young, Esq.	...	...	...				1	1	0
Turner, In Memory of Mr. and Mrs. Alfred M., per Mrs. E. V. Keighley	...	...	...	1	10	0			
United Dairies (London) Ltd.	...	...	...				2	2	0
Unna, Miss	...	...	...	7	0	0			
Watkins, Mrs.	...	...	...	1	1	0			
Watkins, Miss H. G.	...	...	...	5	0	0			
Waygood-Otis, Ltd., Messrs., per D. S. Young, Esq.	...	...	...				1	1	0
Wenner, J., Esq.	...	...	...				0	5	0
White & Shaxson, Messrs.	...	...	...	2	2	0			
Wilkins, Mrs. Philip	...	...	...	1	1	0			
Wilson, Miss M. L.	...	...	...	5	5	0			
Wilbraham, Miss	...	...	...	1	0	0			
Winsloe, Mrs. C. M.	...	...	...	2	2	0			
Woodfield Hoisting and Manufacturing Co., Ltd., Messrs., per D. S. Young, Esq.	...	...	...				1	1	0
Woodroffes, Messrs., per D. S. Young, Esq.	...	...	...				5	5	0
Wrenbury, P.C., Rt. Hon. Lord	...	...	...	10	13	4			
Ye Olde Friends Benevolent Association	...	...	...				5	5	0
*Young, Douglas S., Esq.	...	...	...	4	4	0	2	7	6
				<u>£425 19 11</u>			<u>£929 18 2</u>		

## BOX COLLECTIONS.

				£	s.	d.
Bendix, Mrs. Carl	...	...	...	0	5	11
Chelsea Bowling Club	...	...	...	0	11	9
Cheyne Hospital, Boxes at	...	...	...	10	7	1
Dixon, A. H., Esq.	...	...	...	1	7	2
Hargraves, Miss G.	...	...	...	3	11	5
King's Head and Eight Bells	...	...	...	0	5	3
Pheasantry Club, The	...	...	...	0	11	8
Stopford, Hon. Mrs. Walter	...	...	...	0	6	11
Unknown	...	...	...	1	3	0
Welch, Mrs. F. J.	...	...	...	1	2	3
Weiss, Herr Hans	...	...	...	0	3	10
Wright, Mrs.	...	...	...	0	9	6
				<u>£20 5 9</u>		
St. Nicholas Hospital Hall Box	...	...	...	<u>£0 12 6</u>		

## CENTRAL FUNDS.

	£	s.	d.
King Edward's Hospital Fund for London ...	422	0	0
Metropolitan Hospital-Sunday Fund ...	90	0	0
	<u>£512</u>	<u>0</u>	<u>0</u>

## CONGREGATIONAL COLLECTIONS.

	£	s.	d.
Chelsea Old Church ...	4	10	1
Chelsea Old Church (Choir Carol Singers) ...	2	5	0
St. Anne's Girls' School, S.W. 18. ...	0	13	0
St. Peter's Church, Cranley Gardens, S.W. 7 ...	5	0	0
St. Peter's Children's Church Council ...			
St. Saviour's Church, Valley End, Chobham, Children's Harvest Thanksgiving Service, per The Rev. N. Edmunds ...	0	17	4
Streatham Congregational Church Sunday School Harvest Festival ...	2	2	0
	<u>£15</u>	<u>7</u>	<u>5</u>

## COT SUBSCRIPTIONS—CHEYNE HOSPITAL.

	£	s.	d.
Carlyle School for Girls ...	40	0	0
Dorothy ...	30	0	0
Prudential Assurance Company, Ltd. ...	30	0	0
Prudential Assurance Company, Ltd. (Second Cot) ...	30	0	0
Kensington:—	£	s.	d.
St. Mary Abbots' Church ...	23	17	6
Canziani, Miss ...	0	10	0
Coxhead, Mrs. ...	0	5	0
Kaye, Mrs. ...	0	5	0
Pearson, Mrs. ...	0	5	0
Truscott, Mrs. ...	0	5	0
Voelcker, Mrs. ...	1	0	0
Wills, Mrs. Noel ...	5	0	0
	<u>31</u>	<u>7</u>	<u>6</u>
TOTAL ...	<u>£161</u>	<u>7</u>	<u>6</u>



## CHEYNE HOSPITAL.

## GIFTS OF MONEY FOR SPECIAL PURPOSES, 1933.

			£	s.	d.
HIS MAJESTY THE KING	...	Christmas Donation	...	5	0 0
H.R.H. THE PRINCE OF WALES		do.	...	5	0 0
Harrison, Leonard F., Esq.	...	do.	...	5	5 0
Peech, Mrs.	...	do.	...	1	0 0
Playfair, Miss	...	do.	...	1	0 0
West Ham County Borough	...	do.	...	0	15 0
Brotherhood of Cheerful Sparrows (Westminster Branch)	...		...	5	5 0
Davies, Miss B. O.	...	Christmas Donation, etc.	...	5	0 0
Healey, Colonel	...	Toys	...	2	0 0
Lucas, Mrs. (In Memory of)		Treats	...	6	6 0
Hyde Thomson, Esq., R. H.		Christmas Donation, etc.	...	1	0 0

CONTRIBUTIONS RECEIVED FROM  
CITY COMPANIES.

		Date of last gift.	Amount. £ s d.	Total to 1933. £ s d.
The Worshipful Company of Armourers and				
	Braziers	1932	5 5 0	5 5 0
"	Carpenters	1886	10 0 0	10 0 0
"	Clothworkers	1887	25 0 0	50 0 0
"	Dyers	1933	2 2 0	37 16 0
"	Fishmongers	1931	52 10 0	288 15 0
"	Founders	1933	10 10 0	10 10 0
"	Goldsmiths	1931	30 0 0	270 0 0
"	Grocers	1931	50 0 0	352 10 0
"	Mercers	1931	10 0 0	82 10 0
"	Merchant Taylors	1896	10 10 0	31 10 0
"	Saddlers	1933	5 5 0	115 5 0
"	Salters	1919	5 5 0	10 10 0
"	Skinners	1933	10 10 0	89 5 0
"	Tylers & Bricklayers	1916	5 5 0	5 5 0
"	Vintners	1916	10 10 0	21 0 0

## LEGACIES AND AWARDS FROM CHARITABLE BEQUESTS.

During the last ten years.

(See former Reports for previous Legacies).

			£	s.	d.
1924	Tetley, H. C., Esq. ...	Executors of the late ...	500	0	0
	Green, T. L., Esq. ...	do. ...	100	0	0
	Howard, Sir J., Bart. ...	do. ...	500	0	0
	Candelbert Collindon, R. Esq. ...	do. ...	488	7	0
1925	Innes, Sir James, Bart. ...	Executors of the late ..	55	19	3
	Macbain, George, Esq. ...	do. ...	100	0	0
	Le Geyt, Miss ...	do. ...	20	0	0
	Green, T. L., Esq. ...	do. ...	250	0	0
1926	Fermor-Hesketh, Lady Florence Emily ...	Executors of the late ...	500	0	0
	Clarke, Miss Mary ...	do. ...	20	0	0
	Gearing, Albert, Esq. ...	do. ...	76	19	7
	(per The Public Trustee)				
1927	Hextall, W. B., Esq. ...	Executors of the late ...	500	0	0
	Hunt, Mrs. E. P. Edgell ...	do. ...	145	11	8
	Peech, Henry, Esq. ...	do. ...	71	6	0
1928	Poland, K.C., Sir Harry. ...	Executors of the late ...	100	0	0
1929	Adamson, Charles, Esq. ...	Executors of the late ...	39	8	8
	Cory, John, Esq. ...	do. ...	1000	0	0
	Higgins, John, Esq. ...	do. ...	500	0	0
	Johnson, William, Esq. ...	do. ...	39	14	0
	Peech, Henry, Esq. ...	do. ...	848	12	10
	Rice, Miss Agnes Spring ...	do. ...	100	0	0
	Simmonds, Mrs. Elizabeth ...	do. ...	608	0	10
	Wilson, J. D., Esq. ...	do. ...	250	0	0
	Whigham, Miss Emily ...	do. ...	200	0	0
1930	Higgins, John, Esq. ...	Executors of the late ...	791	6	9
1931	Nelson, Horace H., Esq. ...	Executrix of the late ...	1000	0	0
	Beit, Bart., Sir Otto ...	Executors of the late ...	1000	0	0
	Peech, Henry, Esq. ...	do. ...	59	2	8
1932	Peech, Henry, Esq. ...	Executors of the late ...	40	18	8
1933	Peech, Henry, Esq. ..	Executors of the late ...	621	17	6
	Frank, Sir Howard, Bart. ...	do. ...	449	17	4
	Gosselin, Miss F. C. ...	do. ...	26	0	0
	Teague, Miss Sarah Jane ...	do. ...	20	0	0



# CHEYNE HOSPITAL LINEN AND CLOTHING GUILD.

*Chairman* - MRS. LIONEL BANON.

*Hon. Secretaries:*

Linen Guild—MRS. RAUTHMELL, 11 Sloane Court, S.W.3.

Clothing Guild—MISS PEIRSE-DUNCOMBE.

**More Members and Associates are greatly needed for the Linen Guild, which was started in October, 1926.**

Members of the Linen Guild subscribe 5/- or more a year and are asked if in addition they will give two gifts (linen or clothes); it will also be appreciated if they can persuade any friends to join as Associates of the Linen Guild, and either subscribe 2/6 or (and) an article of linen, or a child's garment.

The annual requirements of Linen for the use of the Hospital cost about £130.

The following is a brief Statement of Account:—

	£	s.	d.
Deposit Pass Book Balance, 1/1/33	70	18	6
Subscriptions for 1933	14	17	6
	85	16	0
Less Grant to Hospital for Linen purchased	75	0	0
Deposit Pass Book Balance, 31/12/33	10	16	0
Interest 1927-33	11	17	3
Total Balance	22	13	3

Any friends of the Hospital who would like to help in the work there, can do so by promoting Dramatic Entertainments, Concerts, Bridge Tournaments, etc., or by obtaining more members and associates for the Linen Guild.

Garments and articles of Clothing and of Linen should be sent to the Hospital, preferably in June or November.

Gifts required include:—

## LINEN.

Blankets.	Pillow Cases.	Towels, Bath.
Dusters.	Sheets.	do. Roller.
Glass Cloths.	Table Cloths.	do. Huckaback.
Pantry Cloths.	Tea Cloths.	

## CLOTHING.

Blue Jerseys.	Knitted Vests.	Operation Socks.
Red Jerseys.	do. Knickers.	

Special thanks are tendered to Mrs. D. P. Chapman for a handsome and most useful gift of Clothing for the patients, and also to Mrs. Ernest A. Ward, of Hampstead, for a similar gift from her Christmas collection.

All Subscriptions should be sent to the Hon. Sec., Mrs. H. A. Rauthmell, 11 Sloane Court, S.W.3, at the same time as the linen and clothing, i.e., 1st June and 1st November.

## THE CHEYNE GUILD.

*Hon. Secretary:*

MISS PEIRSE-DUNCOMBE, 65 Evelyn Gardens, S.W. 7.

---

OBJECT:—To provide Clothes for the Children in the Cheyne Hospital. Ages 3 to 16 years.

---

THE GUILD consists of members who undertake to collect articles of Clothing (new and old) and send them to Miss Peirse-Duncombe, or to the Cheyne Hospital each year by 1st June, or 1st December.

Gifts of one or more articles from those who cannot undertake to collect will be very welcome.

The following articles are specially needed:—

Jerseys, Red, Blue and Grey.  
 Night-gowns (white flannelette or cotton),  
 Frocks (3 to 14 years),  
 Pinafores and Bed Socks; also  
 Socks and Stockings,  
 Vests (knitted by hand),  
 Cast-off Clothes (all sizes),  
 Boots and Shoes for those children who are  
 not always in bed.

131 articles were received during the year ended 31st December, 1933.

## LIST OF GIFTS IN 1933.

4 Pairs of Knitted Wool Stockings.	1 Knicker Suit.
6 Pairs of Knitted Wool Socks.	3 Woven Vests.
6 Knitted Wool Red Jerseys.	14 Nightgowns.
6 Knitted Wool Grey Jerseys.	12 Flannel Nightgowns.
2 Sleeping Suits.	32 Feeders.
12 Red Cotton Knickers.	10 Pairs of Plimsols.
16 Blue Cotton Knickers.	6 Pairs of Knitted Mittens.
1 Cotton Frock.	
	<hr/> 131 Total

Additional members will be very welcome. Ladies desirous of becoming members should communicate with the Hon. Sec., Miss Peirse-Duncombe, 65 Evelyn Gardens, S.W. 7.



## ACKNOWLEDGMENT.

The Committee acknowledge with grateful thanks the many kind presents of Clothing, Flowers, Fruit, Game, Pictures, Books, Toys, etc., received from many friends during the year; and it is hoped that any omissions or inaccuracies in the following lists will be excused.

(Details of Gifts required appear on page 17).

Gifts in kind have been received from the undermentioned:—

## CHEYNE HOSPITAL.

FROM FLOWER SERVICES, HARVEST FESTIVALS, &c.

Chelsea Old Church.

Park Walk Infants' School, Chelsea.

Park Walk J. M. School, Chelsea.

Markham Square Congregational Church.

Streatham Hill Congregational Church.

FRUIT, FLOWERS, VEGETABLES, SWEETS,

CAKES, GAME, FISH, EGGS, &c.

Barratt, J. A., Esq.	Hyde-Thomson, Mrs.	Todd, Miss
Beringer, Miss E. V.	Jaffin, Mrs.	United Dairies, Ltd.
Carlyle School for Girls	Maypole Dairy Co., Ltd.	Ware, Miss
Comyns-Carr, Mrs.	Messrs.	Whigham, Lady
Copeman, Dr. & Mrs.	Mellor, Mrs.	White, Miss
Cromer, The Earl of	Morgan, Mrs. T. L.	Williams, Mrs. Watkin
Dugmore, Henry, Esq.	Morris, Mrs. Percy	Williams, Miss
Dunphie, Miss	Moselyn, Capt.	St. Luke's Children's
Fleming, Mrs.	Park Walk (Junior	Service, Easter Eggs
Fryer, Mr. Ralph,	Mixed) School	Chelsea Old Church
Wedding Cake	Pritchard, Mrs.	Sunday School,
Gwynne, C. M.	Pyne, Miss, St. Mary	Eggs, Fruit, Plants,
Healey, Charles, Esq.	Abbotts Sunday	Flowers
Hichens, Mrs. Lionel	Kindergarten	West Brompton Congre-
Hovis, Ltd., Messrs.	Rauthmell, Mrs.	gational Church,
Hutchison of Montrose,	Ryder, Mrs. Hugh	Eggs, Plants,
Lady	Simonds, Mrs. Gavin T.	Flowers
Hyde, Mr. & Mrs.	Sidey, Mrs. Lyon	

STRAWBERRY TEAS, &c.

Mrs. R. H. Hyde-Thomson.

## CLOTHING, &amp;c.

## HER MAJESTY THE QUEEN.

Barnard, Miss	Dawkins, Lady	Mellersh, The Misses
Brendin, Mrs.	Goldston, Rev. & Mrs.	Queen Mary's London
Borrowscale, Mrs.	Isaac	Needlework Guild
Cooper, Miss	James, Miss P. Stuart,	(30 Garments)
Chapman, Mrs. D. P.,	Shoes	Vigers, Mrs.
94 Garments	Marks, Mrs. Simon, 50	Ward, Mrs. Ernest, 56
The Cheyne Guild, per	Jerseys	Bedjackets
Miss Peirse Duncombe		

## OLD LINEN.

Corbett, Miss

Pickford, Honble. D.

## TOYS.

Angler, Mrs.	Ellison-Macartney, Lady	McLean, Mrs.
Annesley, Mrs.	Grosvenor Surgical	Nesbitt, Miss Cathleen
Birkenruth, Mrs.	Supplies	Paterson, Mrs.
Bourne, Mrs.	Habershon, Miss	Petrie, Mrs.
Boyle, Lt.-Col. S.	Houghton, George, Esq.	Paravicini, Lady Eva de
Carey, Mrs.	Hutton, Mr.	Playfair, Miss Audrey
Casson, Miss Mary	Jones, Mrs. T. Shortland	Reeves, Mrs.
Chapman, S. J., Esq.	Lambert, Mrs.	Thompson, Mrs.
Cheyne Laundry Staff	Lawrence, Mrs.	Underwood, Mr.
Chelsea Conservative	Lester, Master G.	Vans Agnew, Mrs.
Girls' Club	Lyons & Co., Messrs.	Ward, Miss
Cawthorne, Mr. T.	J., Ltd.	Warwick, Mrs.
Dawkins, Lady		

## BOOKS, MAGAZINES, &amp;c.

Banon, Mrs.	Lawrence, Miss	Tuck, Messrs. Raphael
Batley, Mrs. Ralph	Lewis, Miss	(Calendars)
Blofeld, Mrs.	Lewis, Miss Terry	Vernet, Mrs.
Carey, Mrs.	Matthey, Miss	Warwick, Mrs.
Eyston, Mrs.	Petrie, Mrs.	Windham Club
Eastwood, M. M.	Sacher, Mrs. Harry	(Reference Books)
Horner, Charlotte &	Stoddart, Mrs.	
Donald		

## THEATRE, CONCERT TICKETS, &amp;c.

Aldwych Theatre	London Hippodrome	Strand Theatre
B.B.C.	Phoenix Theatre	Savoy Theatre
Haymarket Theatre	Queen's Theatre	Westminster Theatre
Ibbs & Tillet		



## ENTERTAINMENTS, PARTIES, &amp;c.

Dance Orchestra, per Mrs. Thornewill  
Chelsea Postmen

Powell, Mrs.

## GIFTS FOR CHRISTMAS.

DONATIONS—HIS MAJESTY THE KING.

H.R.H. THE PRINCE OF WALES.

Davies, Miss B. O.	Cheerful Sparrows	Hyde-Thomson, R. H.,
Harrison, L. F., Esq.	(Westminster)	Esq.
Peech, Mrs.	West Ham County	
Playfair, Miss	Borough	

GIFTS IN KIND—Banon, Mrs. L., Blunt, Reginald, Esq., Cromer, The Countess of, Goldie, Mrs., Gosling, Mrs., Henry, Mrs., Hichens, Mrs. Lionel, Hyde-Thomson, R. H., Esq., Playfair, Miss, Pyne, Miss (St. Mary Abbott's Sunday School).

“Daily Sketch”—160 Toys. “Nursing Mirror”—Toys.

“Truth,” Editor of—Toys.

Board of Trade, per Mr. L. Reed—Toys.

Rauthmell, Mr. and Mrs. H. A.—Xmas Trees and Presents for Children.

Cameron, Mrs.—Xmas Tree and Presents for Children.

Middleton, Messrs. Wm.—Tubs for Trees

Peirse-Duncombe, Miss—Gifts for Hospital Staffs.

Herefordshire Children (per Rev. Claud Lighton)—Holly and Evergreens.

Slowburn, Mrs. (In memory of)—6d. pieces for Puddings.

GOODS FOR SALE.—Bounds, J. H., British Drug Houses, Field, J. C. & J. Wade, Thomas, Esq.

SURGICAL AID LETTERS.—Little, Mrs., Jones, Sydney, E. W., FitzRoy, Miss Laura M. E., Playfair, The Misses, Dunphie, Miss, Spring-Rice, Miss, Crosbie, Miss F., Burton, John Wm., Esq., Edmunds, Miss, Chapman, L. M., Gulliver, Mrs. A. E., Rintoul, Mrs.

**GIFTS OF SURGICAL AID LETTERS ARE  
VERY USEFUL AND ALWAYS ACCEPTABLE.**

MOTOR DRIVES FOR CHILDREN.—Akroyd, Mrs. Geoffrey, Bidlake, Lady Vere.

TIN-FOIL.—Banon, Mrs., Elam, Miss, Royal Hospital Chelsea, Peirse-Duncombe, Miss.

FURNITURE, ETC.—Chelsea Community Centre for Unemployment, 6 Bed Tables, etc., Hungerford, Mrs., Picture, McLean, Miss, Picture, Mowbray, Mrs. John, Glass Vases, Playfair, Miss, 4 Blankets, Stuart-Sheppard, Mrs, Child's High Chair, Wills, Messrs. W. D. & H. O., Ashtrays.

## SUNDRIES.

Banon, Mrs., Walking Stick, B.B.C., Gramophone Records, Marconiphone Co., Messrs., Gramophone Pick-up, Pickford, Honble. Dorothy, Bottles, Roneo, Ltd., Messrs, Duplicator for Roof Ward.

## ST. NICHOLAS BRANCH HOSPITAL.

## LIST OF SUBSCRIPTIONS AND DONATIONS.

		Subs.			Dons.		
		£	s.	d.	£	s.	d.
Alexandra Day Collection,							
per Mrs. W. Boyle Norcott	...				37	0	0
Beck, Mr. and Mrs. Septimus	...	5	0	0			
Burn, Mrs. P.	...				5	0	0
Cheerful Sparrows, The Brotherhood of	...				5	0	0
Christmas Play Collection	...				1	5	2
Cole & Son, W. J.	...	1	1	0			
Garden Fête, June 29th	...				128	13	4
Hannon, W., Esq	...				10	0	
Larkins, Mrs	...	1	0	0			
Lidgey, Alfred L., Esq.	...						
Minster Laundry, The	...	2	2	0			
Money, Mrs.	...	0	5	0			
Morris, Mrs. Percy	...	3	3	0			
Palk, Hon. Mary	...				0	10	6
Patients Donations	...				3	0	
Penn, Mrs. C. M.	...	1	1	0			
Willett, H. T., Esq.	...	2	2	0			
Williamson, Mrs. Silas	...	1	13	4			
		£17	7	4	£178	2	0

## SUBSCRIBED COTS—ST. NICHOLAS HOSPITAL.

Per St. Nicholas Cot League.

		£	s.	d.
"St Nicholas" Cot	...	40	0	0
"St. Thomas" Cot	...	40	0	0
		£80	0	0

NOTE:—The "St. Augustine" Cot has been permanently endowed by Mr. Lauderdale Ramsay.



# ST. NICHOLAS HOSPITAL NEEDLEWORK GUILD.

Year ended December 31st, 1933.

*Hon. Secretary:*

Miss HILDA LAURIE, The West Gate House, Canterbury.

THE Needlework Guild has again carried on its most useful activities during the past year, when the splendid total of 473 garments were supplied and presented to the Hospital.

The work of the Needlework Guild is indeed of great value, and the generous services so freely rendered by the Hon. Secretary, Miss Hilda Laurie and the Members and Associates are gratefully acknowledged, and much appreciated.

Ladies desiring to join the Guild should communicate with Miss Laurie, at the above address.

## TOTAL OF GARMENTS.

Vice-Presidents	...	...	...	246
Members	...	...	...	31
Needlework Guild Fund	...	...	...	196
Total				<u>473</u>

## *Garments made by Vice-Presidents.*

Anderson, Mrs. G. K.	...	48	Holland, Mrs.	...	14
Arnold, Miss C.	...	21	Hulton, Mrs. Jissop	...	12
Bradford, Mrs.	...	12	Lees, Mrs. Geoffrey	...	14
Colthup, Mrs. William	...	12	Laurie, Miss	...	42
Gwatkins, Mrs. Ashton	...	12	Laurie, Miss Hilda	...	47
Hardy, Miss Bertha	...	12			
					<u>246</u>

## *Made by Members.*

Deakin, Messrs.	...	...	7	Metcalf, Mrs.	...	5
Hammond, Miss	...	...	2	Moore, Mrs., and Hills, Mrs.	...	6
Hardy, The Lady Katharine	...	...	6	Simes, Miss	...	2
Laurie, Mrs.	...	...	3			
						<u>31</u>

## *Garments made or bought from Needlework Guild Fund.*

Blue Sun-drawers	...	...	102
White Flannel Nightgowns	...	...	15
Pairs Blue Stockinette Girls' Knickers	...	...	14
Babies' Woollen Nightgowns	...	...	12
Red Knitted Jerseys	...	...	27
Dressing Gowns	...	...	12
Unbleached Calico Nightgowns	...	...	4
Red Knickers	...	...	5
Red Tunics	...	...	5
			<u>196</u>

ST. NICHOLAS HOSPITAL NEEDLEWORK GUILD  
(continued).

## STATEMENT OF ACCOUNT.

RECEIPTS.				EXPENDITURE.			
	£	s.	d.		£	s.	d.
Ramsay, E. L., Esq.	10	0	0	Remnants of Casement			
Brooks, Miss Lake ...	1	0	0	Cloth Blue	0	14	8
Hardy, The Lady				„ „ Blue	0	3	2
Katharine ...	0	2	6	„ „ Red	0	5	0
Laurie, Miss Hilda ...	0	2	6	Cotton and Elastic ...	0	5	0
				14 Stockinette Knickers	0	13	0
				12 Babies' Woollen			
				Nightgowns ...	0	18	0
				27 Red Jerseys at 2/9	3	14	0
				Remnants of Gingham and			
				Casement Cloth Blue	0	3	0
				„ „	0	4	0
				Taylor, J., for cutting out,			
				etc. ...	0	5	0
				12 Dressing Gowns (Child's)	1	19	0
				33¾ yds. White Flannel	1	17	0
				Unbleached Calico ...	0	4	2
	<u>£11</u>	<u>5</u>	<u>0</u>		<u>£11</u>	<u>5</u>	<u>0</u>

CHEYNE AND ST. NICHOLAS HOSPITALS.  
VISITING DAYS.

Subscribers and Friends, and those interested in the work of the Hospitals, are invited to visit the Wards on Mondays, Wednesdays or Saturdays from 3.30 to 4.30 p.m.

Visiting Hours for Parents:—Sundays, 3 to 5 p.m.



## THE ST. NICHOLAS COT LEAGUE.

## REPORT FOR 1933.

*Committee:*

Mrs. Atkinson ( <i>Chairman</i> ).	Miss Money.
Miss Arnold.	Mrs. White.
Mrs. Champion.	Mrs. Silas Williamson and
Miss Bertha Hardy.	Miss Laurie ( <i>Hon. Secretary and Treasurer</i> ).

The Committee of the St. Nicholas Cot League beg to present their Annual Report, and gratefully acknowledge subscriptions and donations to the amount of £53 10s. 6d. for 1933.

During the past year the usual number of patients have occupied the free Cots, but owing to the length of time that one or two of the children have been detained, our waiting list has been somewhat longer. We have taken in rotation the cases recommended by the members of our Committee, by the Kent and Canterbury Hospital and by the Alford Aid Society. The application for each case is sent to Cheyne Hospital for the final decision there. The necessity for the three free Cots for Canterbury and the neighbourhood seems to be as great as ever, and it only remains for the Cot League to find the money for their maintenance. Our balance this year is somewhat reduced, and we must hope to remedy this defect by some special effort.

We have to record with great sorrow the death of Mrs. Willett, a member of the Committee since 1922, and a great friend to St. Nicholas Hospital. Her unfailing sympathy and kindness will be greatly missed, and her place will be hard to fill.

Mrs. Homer (Miss Christian Ramsay), has resigned owing to her marriage and her consequent absence from the neighbourhood. The Committee announce with much regret her resignation, and would like to express their appreciation of her help and kindness during the past few years.

Miss Bertha Hardy, who has worked for St. Nicholas for many years, has very kindly consented to take Mrs. Homer's place on the Cot League Committee, and her willingness to accept this additional work is very much appreciated, and all the members have recorded their gratitude to Miss Hardy.

Thanks are also due to Messrs. Reeves and Young for their kindness in continuing to audit the accounts of the League.

## LIST OF SUBSCRIBERS FOR 1933.

	£	s.	d.		£	s.	d.
Anderson, Mrs. ...	1	1	0	Brought forward ...	22	15	6
Arnold, Miss ...	5	5	0	Murphy, Mrs. ...	1	1	0
Atkinson, Mrs. ...	5	0	0	Ramsay, Miss C.			
Biddulph, Mrs. (the late)	2	2	0	(Mrs. Homer)	5	0	0
Blore, Colonel ...	0	10	0	Reeves, Mrs. ...	0	10	0
Champion, Mrs. S. ...	3	0	0	Smith, W. C., Esq. ...	5	0	0
Holland, Mrs. ...	2	2	0	Surtees, Mrs. ...	1	1	0
Laurie, Miss ...	1	1	0	Toynbee, Mrs. ...	2	2	0
Laurie, Miss Hilda ...	1	1	0	Willett, Mrs. (the late)	5	0	0
Maitland, Mrs. ...	0	2	6	White, Mrs. ...	5	0	0
Money, Mrs. ...	0	10	0	Williamson, Mrs. Silas	5	0	0
Mount, Mrs. Spencer ...	1	1	0	Williamson, Mrs. Stephen	1	1	0
Carried forward ...	22	15	6				
					£53	10	6

## ST. NICHOLAS HOSPITAL FOR CHILDREN.

## GIFTS IN KIND, DURING 1933,

Are gratefully acknowledged from the undermentioned.

Advance Laundry, Ltd.	Hardy, Miss Bertha	Peirse-Duncombe, Miss
Anderson, Mrs. G. K.	Harris, Mrs.	Pettman, F. L., Esq.
Anon	Harrison,	Playfair, Miss
Arnold, Miss C.	Leonard F., Esq.	Raphael, Mrs. S.
Baxter, E., Esq.	Hayes, Dr. J. B.	Howard-Reed, Capt.
Beck, Mr. and Mrs.	Henham, The Rev. H.	and Mrs. A.
Septimus	Hill, Mrs.	Reeve, R. Dalby, Esq.
Bradford, Mrs.	Hilton-Spratt,	Robinson, The Rev. E.
Burt, Mrs.	The Rev. T.	Colles and Miss
Brice, Mrs.	Holland, Mrs. E. L.	Robinson
Broadley, The Misses	Hulton, Mrs. Jessop	Rountree, Major and
Brockman, The Misses	Jelf, E. A., Esq.	Mrs. Travers
Brunton, Mrs. W. R.	Jones, Thomas, Esq.	Shersby, The Misses
Chapman, Col. and	Knight-Bruce, Miss	Sherson, Miss
Mrs. D. P.	Kemp-Welch, Mrs. H.	Simes, Miss
Champion, Mr. and	Laurie, Miss	Smith, J. H. A., Esq.
Mrs. Sidney	Laurie, Miss Hilda	Stainbank, Miss
Colthup, Mrs. William	Laurie, Mrs. Vernon	Stevenson, Capt. and
Cullen, Messrs. W. H.	Lees, Mrs. Geoffrey	Mrs.
Daniels, Mr. and Mrs.	Lindo, Mrs.	Tapp, Major and Mrs.
Deschamps, Mr. and	Mailland, Mrs.	Thompson, Mr. and
Mrs. P.	Marsden, W., Esq.	Mrs. F. W.
Deschamps, Miss Pamela	Metcalf, Mrs.	Tribe, Mrs. E. M.
Dickson, Douglas, Esq.	Miles, Mrs.	Walker, Mrs. H.
Gore, Mr. F.	Moore, Mrs.	Walker, Mr. and Mrs.
Gray, Miss D. A.	Norcott, Dr. and Mrs.	Walton, Miss
Green, Mrs. W. B.	W. Boyle	West, Mr.
Griggs, Rev. S. R.	Norcott, Miss Beatrice	Willett, H. T., Esq.
Gwatkins, Mrs. Ashton	Palmer, Miss	Woollett, Mrs. E. M.
Hammond, Miss	Packham, Mr. W.	Young, Miss
Hardy, The Lady	Pearson, Mrs. R.	
Katharine		

Jewish Friendly Society Convalescent Home,—Matron, Sister, Staff, and Patients of.

Woodstock College, Wimbledon, Pupils of, per Miss Walton.

Cheyne Hospital, per The Secretary.

Women's Institute, Westbere and Sturry, per The Secretary.

Grosvenor Surgical Supplies, Co.

Mrs. W. R. Brunton, Xmas Gifts to Patients and Staff.



## ST. NICHOLAS HOSPITAL (Gifts continued).

## GIFTS OF CAST-OFF CLOTHING.

Mrs. Boyle Norcott, 19 pairs of Children's Shoes and several Garments.

## FROM FLOWER SERVICES, HARVEST FESTIVALS, &amp;c.

Chilham Church, per The Rev. J. Hilton-Spratt.  
 Monkton Church, per The Rev. H. Henham.  
 St. Nicholas-at-Wade Church, per The Rev. E. Colles Robinson, M.A.  
 The Bay Congregational Church, Birchington, Sunday School.  
 Monkton Chapel, per Mr. Fuller.

## ENTERTAINMENTS, &amp;c., FOR CHILDREN, 1933.

Strawberry Tea. Captain A. and Mrs. Howard-Reed.  
 Strawberry Tea. Mr. and Mrs. Septimus Beck.  
 Cinematograph Entertainments. Dr. J. B. Hayes.  
 Conjuror and Tea. L. F. Harrison, Esq.  
 Christmas Trees and Musical Entertainer. Friends.  
 Drives and Tea Parties. Mrs. Travers Rountree.  
 Drives and Beach Parties. Playfair Trust Fund.

## ST. NICHOLAS HOSPITAL—BRANCH HOSPITAL.

## GIFTS OF MONEY FOR SPECIAL PURPOSES.

	£	s.	d.
Harrison, Leonard F., Esq. Christmas Donation ...	5	0	0
Norcott, Dr. and Mrs. Boyle. do. ...	1	1	0
Rountree, Mrs. Travers. For Children's Treats, etc.	10	0	0
Smith, J. H. A., Esq. Christmas Donation ...	2	0	0
Per The Secretary, Cheyne Hospital do. ...	10	0	0
Hammond, Miss N. For Toys ...	2	0	0
Playfair Trust Fund For Drives ...	3	3	0





---

W. AUSTIN & SONS,  
Printers,  
82 Elystan Street, Chelsea,  
S.W. 3.