

## **Annual report : 1922 / Cheyne Hospital for Children.**

### **Contributors**

London (England). Cheyne Hospital for Children

### **Publication/Creation**

London : [Cheyne Hospital for Children], 1922

### **Persistent URL**

<https://wellcomecollection.org/works/pnr8sp5z>

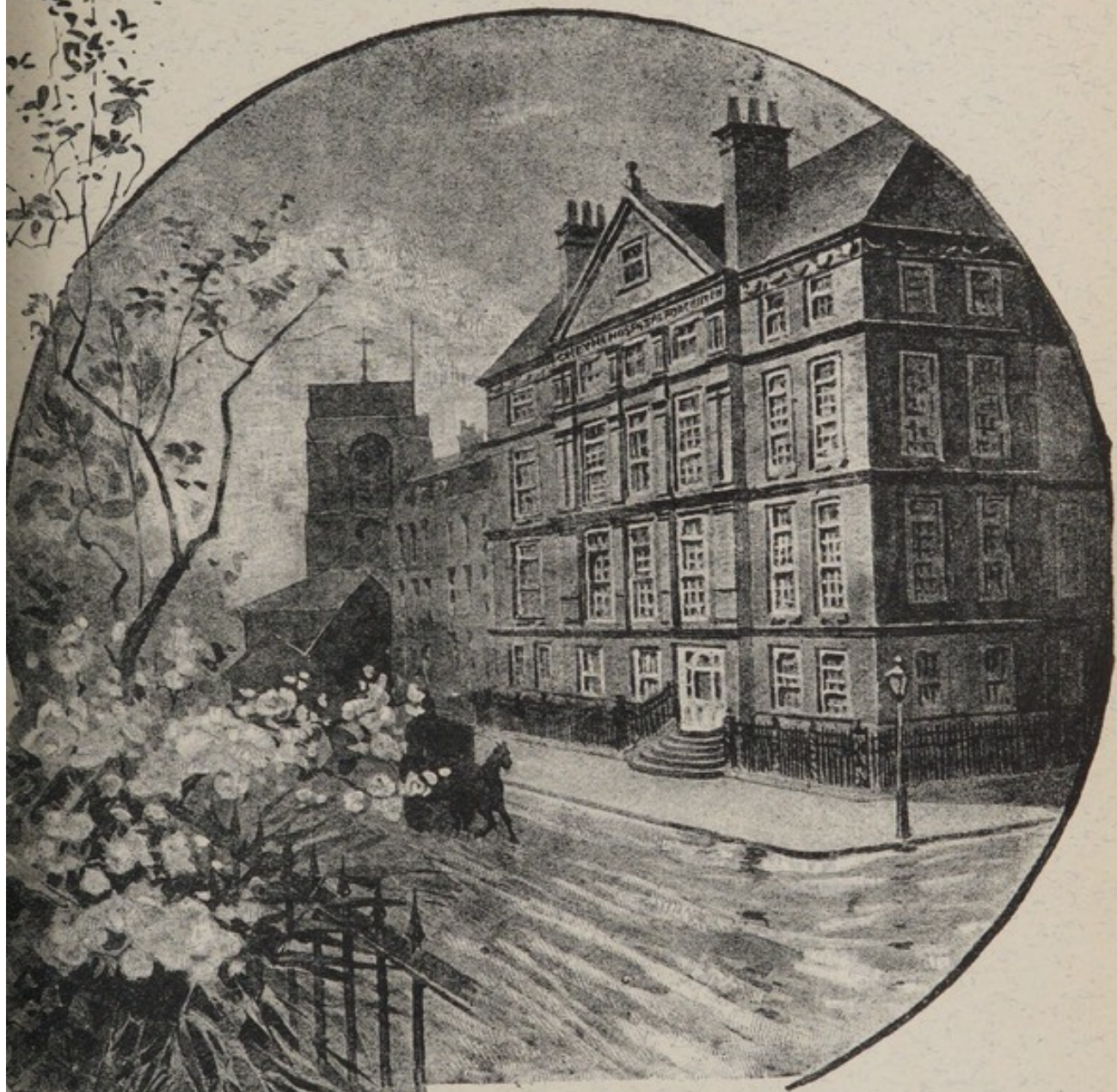
### **License and attribution**

This work has been identified as being free of known restrictions under copyright law, including all related and neighbouring rights and is being made available under the Creative Commons, Public Domain Mark.

You can copy, modify, distribute and perform the work, even for commercial purposes, without asking permission.

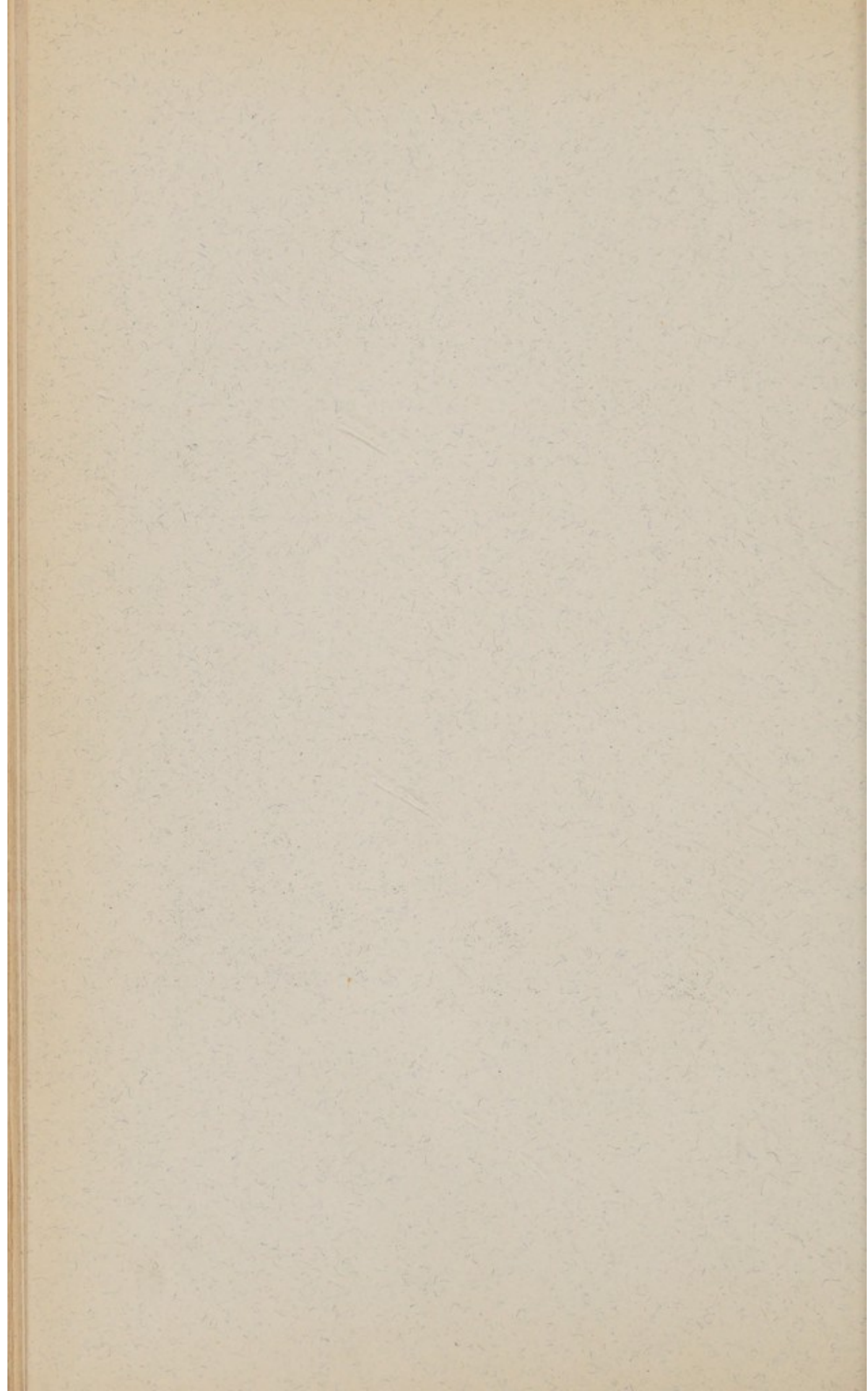


Wellcome Collection  
183 Euston Road  
London NW1 2BE UK  
T +44 (0)20 7611 8722  
E [library@wellcomecollection.org](mailto:library@wellcomecollection.org)  
<https://wellcomecollection.org>



CHEYNE  
HOSPITAL

1922.



THE FORTY-SEVENTH  
ANNUAL REPORT OF THE  
CHEYNE HOSPITAL FOR  
CHILDREN,

for the Year ending the 31st of  
December, 1922.

President :

HER MAJESTY QUEEN ALEXANDRA.

Vice-Presidents :

The Rt. Hon. The EARL OF CROMER, G.C.I.E., C.V.O.

The DOWAGER LADY MONKSWELL.

Chairman :

The Rt. Hon. LORD STERNDALE, P.C.,  
Master of the Rolls.

Treasurer :

LEONARD F. HARRISON, Esq.

Secretary :

HENRY KEMP-WELCH.

CHEYNE WALK, CHELSEA.

PRESIDENT :

HER MAJESTY QUEEN ALEXANDRA.

VICE-PRESIDENTS :

THE RT. HONBLE. THE EARL OF CROMER, G.C.I.E., C.V.O.  
THE DOWAGER LADY MONKS WELL.

TRUSTEES :

LEONARD F. HARRISON, Esq.  
THE RT. HON LORD STERNDALE P.C., Master of the Rolls  
HON. FRANK TREVOR BIGHAM, C.B.  
REGINALD WARD POOLE, Esq.

TREASURER :

LEONARD F. HARRISON, Esq.

COMMITTEE OF MANAGEMENT :

THE RT. HON. LORD STERNDALE, P.C., Master of the Rolls,  
*Chairman.*  
LEONARD F. HARRISON, Esq., *Vice-Chairman.*  
MRS. LIONEL BANON.  
J. PRIME BARTLETT, Esq., M.R.C.S.  
HON. FRANK TREVOR BIGHAM, C.B.  
REGINALD BLUNT, Esq.  
SIR JOHN ROSE BRADFORD, K.C.M.G., M.D., F.R.S.  
MRS. GEIGER.  
Miss PEIRSE-DUNCOMBE.  
MRS. PERCY MORRIS.  
Miss L. PLAYFAIR.  
HUGH MOSTYN PRITCHARD, Esq.  
Mrs. H. M. PRITCHARD.  
REGINALD WARD POOLE, Esq.  
Mrs. C. LYON SIDEY.  
ALFRED M. TURNER, Esq.  
G. E. O. WILLIAMS, Esq., F.R.C.S.

HON. CHAPLAINS :

THE STAFF OF ST. LUKE'S, CHELSEA.  
REV. H. E. TRIMMER, ST. NICHOLAS.

SECRETARY :

HENRY KEMP-WELCH.

ASSISTANT SECRETARY :

B. E. BERRINGTON.

MATRON, CHEYNE HOSPITAL:

MISS L. ANGUS.

MATRON, ST. NICHOLAS HOSPITAL:

MISS A. C. MacL. MONEY.

AUDITORS:

MESSRS. BALL, BAKER, CORNISH & Co.,  
Chartered Accountants, Finsbury Court, E.C.

BANKERS:

THE WESTMINSTER BANK, LTD.,  
14, Sloane Square, S.W.

MEDICAL STAFF:

### CHEYNE HOSPITAL.

CONSULTING PHYSICIAN:

SIR JOHN ROSE BRADFORD, K.C.M.G., M.D., F.R.S.

CONSULTING SURGEON:

RAYMOND JOHNSON, M.B., F.R.C.S.

SURGEONS:

J. PRIME BARTLETT, M.R.C.S.      G. E. O. WILLIAMS, F.R.C.S.

DENTAL SURGEON:

T. VERNON, L.D.S.

ANÆSTHETIST:

DR. ELLA G. BRISCOE-OWEN.

X-RAY OPERATOR:

DR. R. W. A. SALMOND.

DISPENSER:

MISS J. T. KITCHINGMAN.

### ST. NICHOLAS HOSPITAL.

SURGEON:

WALTER REYNER BRUNTON, M.B., M.R.C.S., L.R.C.P., D.P.H.

CONSULTING SURGEON:

WM. GREENWOOD SUTCLIFFE, F.R.C.S., M.R.C.S., L.K.C.P.

DENTAL SURGEON:

PERCY LAWRENCE WEBSTER, M.R.C.S., L.R.C.P., L.D.S., &c.

## PRIVILEGES OF DONORS AND SUBSCRIBERS.

1—Donors of not less than Fifty Guineas (£52 10s.) in one sum and Annual Subscribers of Ten Guineas (£10 10s.) and upwards (during the continuance of such subscription) are thereby constituted Governors, and are entitled to attend and vote at the Annual Meeting of the Committee of Management, and to nominate one suitable case for admission annually, such cases having precedence on the list over those recommended by other Subscribers.

2—All Annual Subscribers of One Guinea and upwards are entitled to recommend one suitable case annually, during the continuance of such subscription; such cases taking precedence on the Admission List over those not so recommended.

## EXECUTORS.

One of the Executors of every person from whose estate a Legacy of Fifty Guineas or upwards shall have been received by the Hospital, shall be entitled to the same privileges as a Donor of Fifty Guineas.

## LIFE COT ENDOWMENTS.

1—A Donation in one sum of Three Hundred Pounds (£300) endows a Free Cot for the period of the life of the Donor, who is entitled to name it and to nominate eligible patients thereto as vacancies shall arise therein.

2—A Donation in one sum of Two Hundred and Fifty Pounds (£250) endows a Half-Payment Cot for the period of the life of the Donor, who is entitled to name it and to nominate eligible patients thereto as vacancies shall arise therein.

Life Cot Endowments, ceasing upon the death of a Donor, may be converted into Permanent Cot Endowments by the Payment within twelve months of the death of the Donor, either by Bequest or otherwise, of the further sum of Seven Hundred Pounds in the case of a Free Life Cot Endowment, or of Five Hundred Pounds in the case of a Half-Payment Life Cot Endowment, free of Legacy Duty.

## COT SUBSCRIBERS.

1—An Annual Cot Subscription of Forty Pounds (or a Donation in one sum of One Thousand Pounds), entitles the Subscriber to name a Free Cot, and to nominate an eligible patient as often as the Cot becomes vacant; no further payment being required on behalf of the occupant.

2—An Annual Cot Subscription of Thirty Pounds (or a Donation in one sum of Seven Hundred and Fifty Pounds), entitles the Subscriber to name a Half-Payment Cot, and to nominate an eligible Patient as often as the Cot becomes vacant; the weekly payment of three shillings and sixpence being required from the parents or friends of the occupant.

3—A Donor of £250 in one sum is entitled to *name* a Cot in perpetuity, but without the right to nominate the occupants thereof.

## RULES FOR THE ADMISSION OF PATIENTS.

---

1—Such cases only are eligible for admission as have been rejected or discharged from a General Hospital, or can be shown to be unfit for treatment in such Hospitals.

2—Cases of Cancer, Consumption, Epilepsy, Ricketts, Hydrocephalus, Mental derangement or deficiency, all infectious cases, and Cripples not requiring Surgical Treatment, are not eligible. Pauper Children (that is, Children to be paid for, either wholly or in part, by the Guardians, directly or indirectly) are also inadmissible.

3—Children are admitted only between three and thirteen years of age, those recommended by Governors and Subscribers taking precedence. Patients are not retained after the age of sixteen.

4—The payment of Seven Shillings a week is required from the Parents or Friends of the Patients.\*

5—No case will be put upon the List for Admission till Forms of Medical Certificate and Guarantee (to be obtained of the Secretary) have been duly filled in and signed by a qualified Medical Practitioner and responsible Guarantor respectively, and returned to the Secretary of the Hospital.

6—The Committee reserve power to refuse the name of any Guarantor without reason assigned, or to require a Guarantor to furnish references for the necessary security to their satisfaction.†

7—No Guarantee shall be withdrawn without one month's previous notice in writing to the Secretary of the Hospital.

8—Applicants for admission, unless the Doctor shall certify to the contrary, may be required to be brought to the Hospital for Medical examination before they can be admitted.

9.—Any Child who has been admitted to the Hospital, but who subsequently proves unsuitable from any cause, may be discharged upon three days' notice, sent by post to the last furnished address of the parent or guardian. The expenses of removal must be in all cases defrayed by the parents or friends of the child.

10—A certificate that the patient has not been suffering from any infectious disease, nor been exposed to infection, *must* be signed by a responsible person, cognisant of the facts, and be *brought with the child*.

11.—Any alteration in the address of the patient while awaiting admission should be at once notified to the Secretary.

---

\* Certain Free and Assisted Cots have been founded for specially necessitous cases. Applications for vacancies in these must be accompanied by full particulars of the circumstances of the family; and it must be borne in mind that the Committee only occasionally have these Cots at their disposal.

† The Guarantor should be a householder (or the wife of a householder) rated at £40 or more per annum. Unless the parents make regular weekly payments at the Hospital, the Guarantor is requested to arrange to receive their contributions and remit the maintenance charge quarterly.



## METHODS OF HELP.

## GIFTS IN MONEY.

- £1,000 endows a named Free Cot in perpetuity.  
 £750 endows a half-payment Cot in perpetuity.  
 £300 endows a named Free Cot for the Donor's life.  
 £250 endows a half-payment Cot for the Donor's life.  
 £250, in one payment, entitles the Donor to name a Cot in perpetuity.  
 £52 10s. Donation constitutes a Life Governor.  
 £40 Annual Subscription supports a named Free Cot.  
 £30 Annual Subscription supports a half-payment Cot.  
 £10 10s. Annual Subscription gives a Governor's preferential nomination.

Smaller Subscriptions or Donations are much valued and gratefully acknowledged.

## GIFTS IN KIND.

The following articles are specially needed:—

At Cheyne Hospital—Vests (knitted by hand), Night-gowns (white flannelette or cotton), Frocks (3 to 14 years), Pinafores and Bed Socks, also Cast-off Clothing (all sizes), Boots and Shoes for those children who are not always in bed.

At St. Nicholas Hospital—Cast-off Clothing, Boys' Jerseys, Red Twill Jackets, Flannel or Cotton Night-gowns, Long Sleeved Vests, Holland Overalls, and Boots and Shoes for convalescent children.

Game, Rabbits, Fresh Fruit and Eggs, New (unbroken) Toys, Jellies; etc., are much appreciated.

Patterns of clothing will gladly be sent from either Hospital to anyone who will kindly supply the articles required.

## THE CHEYNE GUILD.

---

OBJECT.—To provide Clothes for the Children in the Cheyne Hospital. 29 Boys, 25 Girls. Ages 3 to 16.

THE GUILD consists of members who undertake to collect articles of Clothing (new and old) and send them to the Secretary of the Guild (Miss Peirse-Duncombe, 65, Evelyn Gardens, S.W. 7, or at the Cheyne Hospital) each year by 1st June.

Gifts of one or more articles from those who cannot undertake to collect will be very welcome.

The articles most required are enumerated on page 6 under the heading "Gifts in Kind."

190 articles were contributed in 1922, but many more are needed yearly and will be most gratefully received.

---

## THE "CRANSTOUN KERR" COT ENDOWMENT FUND.

		<i>£</i>	<i>s.</i>	<i>d.</i>
In hand 31st December, 1921	...	314	13	7
Cash per Mrs. J. Woolley	...	1	0	0
Interest on <i>£</i> 314 13s. 7d. at 3 per cent.	...	9	8	10
		-----		
In hand, 31st December, 1922	...	<i>£</i> 325	2	5
		-----		

## NEEDLEWORK GUILD (St. Nicholas Hospital).

During the year 1922 the Guild supplied 274 garments to the Hospital, all of which were of excellent quality and most acceptable

The Matron wishes to tender her warmest thanks to Miss Hilda Laurie, Secretary of the Guild, and to the Vice-Presidents and Supporters for their continued kind help and Gifts of Clothing.

The Year's Work of the Guild has been most satisfactory, producing an increase of 42 garments.

The articles specially needed are given on page 6.

*Made by Vice-Presidents.*

Brunton, Mrs.	-	-	12	Laurie, Miss Hilda	-	-	15
Buss, Mrs.	-	-	12	Packham, Mrs. Arthur	-	-	12
Biddulph, Mrs.	-	-	24	Reiss, Miss Mollie ...	-	-	12
Champion, Mrs. Sidney	-	-	17	Knight, Miss ...	-	-	12
Champion, Mrs. Percy	-	-	12	Pemberton, Mrs. ...	-	-	14
Colthup, Mrs. William	-	-	12	Prescott-Westcar, Mrs.	-	-	12
Holland, Mrs.	-	-	14				---
Hardy, Miss Bertha	-	-	12	Total	-	-	204
Lees, Mrs.	-	-	12				

*Made by Members.*

Anderson, Mrs. G. K.	-	2	Laurie, Mrs. R. M.	...	4
Chapman, Mrs. D. P.	-	4	Simes, Miss	-	2
Heath, Miss A.	-	3			---
Hardy, The Lady Katherine	-	2	Total	...	17

*Made from St. Nicholas Guild Funds.*

Red Flannel Jackets	-	-	-	-	34
Pink Jersey	-	-	-	-	1
Blue Serge Dresses	-	-	-	-	13
Corduroy Knickers	-	-	-	-	1
Night Gowns	-	-	-	-	4
					---
				Total	53

## RECEIPTS.

	£	s.	d.
Balance, 1921	-	-	3 1 6½
Ramsey, Mr. L.	-	10	0 0
Shersby, Mrs.	-	0	10 0
Terry, Mrs.	-	0	10 0
			---
	£14	1	6½

## EXPENDITURE.

	£	s.	d.
Materials for 1922,			
Payment for Work			
and Clothes for A.			
Tyrrell	-	13	6 2
B lance in hand	-	0	15 4½
			---
	£14	1	6½

SUMMARY OF FORTY-THREE & ONE-HALF YEARS' WORK COMPILED FROM THE MEDICAL REPORTS.

YEAR ENDING.	Number of Occupied Cots in the Hospitals.	No. of Fresh Cases admitted during the year.	Total Number of Patients under treatment during the year.	Patients removed as Unfit, or by Parents' desire.	Discharged Relieved.	Discharged Cured.	Died.	Remaining under the charge of the Hospital.	
1st July, 1873 to } 31st Dec., 1909 }	—	718	—	68	217	180	203	50	Cheyne.
„ 1910	76	53	103	—	8	17	3	75	{ Cheyne and St. Nicholas.
„ 1911	78	37	112	2	6	18	9	77	Do.
„ 1912	80	42	119	—	10	21	8	80	Do.
„ 1913	80	46	126	1	5	31	12	77	Do.
„ 1914	81	37	118	—	7	19	8	80	Do.
„ 1915	82	46	126	1	7	22	13	83	Do.
„ 1916	79	51	134	—	17	30	9	78	Do.
„ 1917	78	45	121	—	22	15	8	78	Do.
„ 1918	79	40	118	—	18	11	10	79	Do.
„ 1919	79	59	138	1	30	24	6	77	Do.
„ 1920	77	40	117	2	16	17	8	74	Do.
„ 1921	83	63	137	1	20	31	5	80	Do.
„ 1922	83	51	131	—	39	14	6	72	Do.
TOTALS ...		1328		76	422	450	308		

## RESULTS.

Total number of Patients received during last 43½ years	...	1328
Deduct—Patients removed by Parents or as Ineligible under Rules	76	
„ Remaining under Treatment Dec. 31, 1922	...	72
		— 148
Nett Number of Cases finally Treated	...	1180
Of which:—Number Discharged Relieved	...	450
„ „ Cured	...	422
„ who Died	...	308
		— 1180
		Per Cent.
		73.89
		26.11

## MEDICAL REPORT.

Summary of the nature of the cases treated at  
Cheyne Hospital.

	Treated.	Discharged Cured.	Discharged Relieved.	Died.	Transferred	Remaining in Hospital.
Tuberculous Disease of Spine	15	—	—	1	6	8
Tuberculous Disease of Hip .	17	—	—	—	3	14
Tuberculous Disease of Ankle	3	—	1	—	1	1
Tuberculous Disease of Knee	4	—	3	—	1	—
Tuberculous Disease of Wrist	1	—	—	—	—	1
Infantile Paralysis . . .	10	—	5	—	1	4
Spastic Paralysis . . .	5	—	4	—	—	1
Osteomyelitis . . . .	3	—	1	—	—	2
Dactylitis . . . . .	3	1	—	—	2	—
Rheumatic Arthritis . . .	1	—	1	—	—	—
Scoliosis . . . . .	2	—	1	—	1	—
Poliomyelitis . . . . .	2	—	1	—	—	1
Talipes Equino Varus . . .	2	1	1	—	—	—
Chorea . . . . .	3	—	—	—	2	1
Heart . . . . .	26	—	5	3	10	8
Epiphysitis . . . . .	1	—	—	—	—	1
Kidney Disease . . . . .	1	—	—	—	—	1
	99	2	23	4	27	43

MEDICAL REPORT.

---

Summary of the nature of the cases treated at  
St. Nicholas Hospital.

	Treated.	Discharged Cured.	Discharged Relieved.	Died.	Transferred.	Remaining in Hospital.
Tuberculous Disease of Spine	15	3	3	1	—	8
Tuberculous Disease of Hip	19	1	3	1	1	13
Tuberculous Disease of Knee	3	1	—	—	2	—
Tuberculous Disease of Foot	1	—	—	—	—	1
Tuberculous Peritonitis . . .	1	1	—	—	—	—
Tuberculous Glands . . . .	3	2	1	—	—	—
Infantile Paralysis . . . .	1	—	—	—	—	1
Osteomyelitis . . . . .	1	—	—	—	1	—
Dactylitis . . . . .	3	—	—	—	—	3
Chorea . . . . .	3	2	—	—	1	—
Heart . . . . .	11	—	9	—	—	2
Kyphosis . . . . .	1	—	—	—	—	1
Enlarged Cervical Gland . .	1	1	—	—	—	—
Non-tuberculous Disease of Spine . . . . .	1	1	—	—	—	—
	64	12	16	2	5	29

Forty-seventh Annual Report  
OF  
 The Committee of Management  
OF  
 Cheyne Hospital for Children,

For the Year ending December 31st, 1922.

**T**HE Committee of Management have pleasure in presenting their Report, together with the Audited Accounts, for the year ending the 31st December, 1922.

**Work of the Year.—Cheyne Hospital.**

In Hospital, 1st January, 1922	54
New Patients Admitted	40
Transferred from St. Nicholas	5
	—99
Discharged Cured or Relieved	25
Died	4
Transferred to St. Nicholas	27
Remaining in Hospital, 31st December, 1922	43
	—99

**Cottage Homes.**

At Cottage Homes, 1st January, 1922	2
Sent there during the year	3
	— 5
Discharged	5
	— 5

**St. Nicholas Hospital.**

In Hospital, 1st January, 1922	26
New Patients Admitted	11
Transferred from Cheyne Hospital	27
	—64
Discharged Cured or Relieved	28
Died	2
Transferred to Cheyne Hospital	5
Remaining in Hospital, 31st December, 1922	29
	—64

Good, steady progress has characterised the work of both Hospitals. The value of the St. Nicholas Branch Hospital has been abundantly proved, twenty-four cases having been transferred there from Cheyne Hospital, to benefit by treatment in the open air. Two cases of Scarlet Fever occurred at Cheyne and two of Diphtheria at St. Nicholas, but these were at once removed, and have since quite recovered. Considering the very large number of infectious cases which occurred in London during the year, it is most satisfactory that these Hospitals escaped so lightly.

### Education.

School work has been carried on without interruption and with excellent results. The Committee greatly regret the resignation of the Head and Assistant Teachers at St. Nicholas, both of them being about to leave the country for other parts of the world.

### Cots.

A sum of £400 has been received from the Trustees of St. Peter's (Cranley Gardens) War Memorial Fund, for the purpose of naming a Cot *in perpetuity* in memory of the members of that church who fell in the Great War, the Cot having been named "The St. Peter's (Cranley Gardens) Memorial Cot." Sincere thanks are tendered to Rev. C. S. Woodward, M.A., and the Trustees for having thus honoured this Hospital.

The Committee are also most grateful to Miss E. S. Peirse-Duncombe for having contributed £250 for the purpose of naming a Cot *in perpetuity* in memory of a sister. This has been named "The Ethel Slingsby" Cot.

Thanks are also tendered to all those who have so kindly continued their Subscriptions to various Cots.

### Cottage Homes.

Great benefit has been received by those patients who have been boarded out in the village of St. Nicholas, and it is to be regretted that this work has had to be discontinued temporarily owing to difficulties experienced in finding suitable accommodation.



## Finance.

His Majesty The King has again graciously sent a gift of £5 as a Special Christmas Donation.

Her Majesty Queen Alexandra has graciously sent a most welcome contribution of £50 out of the funds placed at her disposal by the Alexandra Day Committee.

H.R.H. The Prince of Wales has also kindly sent a gift of £5 as a Special Christmas Donation.

The following contributions, amongst others, are gratefully acknowledged :—

	£	s.	d.
King Edward's Hospital Fund - -	200	0	0
Hospital Sunday Fund - - -	155	0	0
Hospital Saturday Fund - . -	245	0	0
Mrs. Vollar, per Mrs. F. A. Johnston -	100	0	0
The Mayor of Chelsea Relief Fund -	50	0	0
The Alexandra Day Committee (per Miss C. May Beeman) - . -	50	0	0
The Alexandra Day Committee, St. Nicholas (per Mrs. Harold Cobb)	20	0	0
The Misses Wallis - - -	20	0	0
Mr. H. Hellett - - - -	20	0	0
Miss G. M. Parnell (The Lucy Locket Figure) - - - - -	15	15	0

In connection with ten other Children's Charities, a Christmas Carnival was held at the Royal Albert Hall at Christmas, 1921.

This effort, however, did not produce as large a sum as was hoped for, the nett proceeds to each Institution being £40 12s. 5d.

The many friends who helped in this effort are most sincerely thanked.

The award made to this Hospital from the amount voted by Parliament for the relief of Hospitals, as recommended by the King Edward's Hospital Fund, and distributed through the Voluntary Hospitals Commission, was £1,560, which is a most acceptable contribution to the General Purposes of the Hospital,

Great efforts have been made by the Combined Hospital Appeal to raise the sum of £500,000, and it is hoped that this will shortly be completed. From the amounts already collected two interim distributions have been made, the sum of £630 having been received therefrom by this Hospital.

In connection with this Appeal, Miss L. Playfair, together with Lady Russell, most kindly organised "The Beggars" Garden Party, which was to have been held in their two gardens.

Unfortunately the weather on the day was so unpropitious that the party was adjourned to the Chelsea Town Hall, which had been considerably placed at their disposal, in such an event, by the Mayor of Chelsea.

The party was largely attended, and was greatly enjoyed by all who were there, and resulted in the very satisfactory sum of £255 14s. 6d. being handed to the Mayor as a contribution to Combined Appeal, out of which £191 15s. 10d. was returned, as agreed, direct to the Hospital, being 75 per cent. of the nett proceeds.

Very sincere thanks are tendered to Miss Playfair, Lady Russell, the members of the Beggars' Opera Company, and all those who helped in many ways.

Sincere thanks are also tendered to all those friends who helped this Hospital in the two Flag Day Collections made on behalf of the Combined Appeal.

In addition to the gift mentioned above, Miss Peirse-Duncombe very kindly arranged a most enjoyable concert, which was held at the Kensington Town Hall on 19th May, resulting in a contribution of £18 4s. 0d. The music was rendered by an orchestra and choir organised by Miss Tudor-Craig, to whom the Committee tender their most grateful thanks.

On the 22nd July a Garden Party was held at St. Nicholas Hospital attended by about three hundred guests. Lady Carson very kindly opened the proceedings with a short address, and the Committee wish to express their gratitude to her for doing so. The Pupils of Miss Barnes' School, Portpool, Birchington, once more enlivened the entertainments with a well acted Pastoral Play entitled "Bob-over-the Wall," which was greatly appreciated by all present. The Committee are most grateful to them for their help. A stall for the sale of work made by the patients proved most attractive, and nearly everything was disposed of. Special thanks are due to Mrs. Harold Cobb,

Mr. Smith and others, who gave most practical help. Music was provided by the Band of the Royal Air Force stationed at Manston (by kind permission of Wing Commander T. H. A. Landon, D.S.O., O.B.E.). Everyone appeared to enjoy themselves, thanks to the efforts of the Matron and the staff of the Hospital. The nett proceeds amounted to £59 18s. 3d.

On the 30th October a Sale of School Work was held at Cheyne Hospital; in addition, a stall of work was furnished by Miss Peirse-Duncombe. A sum of £13 18s. 3d. was realized. Mrs. Geiger kindly distributed the School Prizes.

### Expenditure.

Every care has been taken to keep expenditure as low as possible. The cost of Provisions shews some reduction, but owing to the necessity for renewals of furniture, linen, crockery, etc., and painting and decorative repairs, and to the continued high prices for many articles, the total ordinary expenditure has slightly exceeded that of last year.

### Legacies.

A further payment of £450 has been received from the Executors of the late Sir James Innes, Bart., and also a Legacy of £100 (less £1 10s. exchange) from the Executors of the late Mrs. Helen Seabrook of Hobart Town, Tasmania.

### General.

The Committee of Management sincerely welcome Miss L. Playfair as a member of the Board.

The resignation of Mr. Percy Flemming has been received with great regret. He has given his services as Honorary Ophthalmic Surgeon since March, 1911, and was always most kind and helpful.

The Committee offer to him their sincerest thanks.

Miss Wheeler has resigned her post as Dispenser owing to her leaving the country for Australia. She has been succeeded by Miss Kitchingman.

Harvest Festivals were held at Cheyne Hospital on the 19th October and St. Nicholas on the 3rd October, and were conducted respectively by the Rev. W. H. Hacksley, B.A.,

Vicar of All Saints' Church, Battersea Park, and the Rev. H. E. Trimmer of St. Nicholas, to both of whom the Committee tender their sincerest thanks.

For some months past a few patients at Cheyne Hospital have been treated, on the flat portion of the roof, in the open air, with such satisfactory results that a scheme is now being considered to provide for a larger number by making a flat roof over the whole building, whereby about 18 children could receive open-air and sun-cure treatment. This would entail considerable expense which the Committee think would be fully justified by results.

It will be necessary to make a Special Appeal for the purpose of raising funds to meet this outlay, and also to provide for the maintenance of an increased number of patients.

It is very satisfactory to record that the Extraordinary Receipts referred to above have largely cancelled the deficiencies of the past two years, but an earnest appeal is made to all those interested in the Hospital to make its needs more generally known and to secure the help required to enable the work of the Hospital to be carried on without annual deficiencies.

### Committee.

The following members of the Committee of Management, viz., Reginald Blunt, Esq., Mrs. Geiger and Mrs. Percy Morris, retire at the Annual Meeting in the order of the seniority of their appointment and are eligible for re-election.

*Signed on behalf of the Committee of Management,*

STERNDALE, *Chairman.*

L. F. HARRISON, *Treasurer.*

## THE CHEYNE HOSPITAL

Dr.	BALANCE SHEET,								
			£	s.	d.	£	s.	d.	
I.	TO SUNDRY CREDITORS	...	...	...			482	4	10
II.	„ LOANS TO HOSPITAL	...	..	...					
III.	„ CAPITAL ACCOUNTS—								
	(A) For Special Purposes, as at 1st Jan., 1922,								
	(a) Cot Endowments—								
	Free Cots—								
	“Every Girls”	...	...	1,000	0	0			
	“George Horatio”	...	...	1,000	0	0			
	“Wordsworth”	...	...	1,000	0	0			
	“Mary Anna Harrison”	...	...	1,000	0	0			
	“Arminel Cary”	..	...	1,000	0	0			
	“Daniel Pidgeon”	...	...	1,000	0	0			
	“Katie Mackenzie Fairfax”	...	...	1,000	0	0			
	“Winifrid”	...	...	1,000	0	0			
	“The Children’s”	...	...	1,000	0	0			
	“Founder’s”	...	...	1,000	0	0			
	“Jean Marjorie Campbell”	...	...	1,000	0	0			
	“Anne Fairfax”	...	...	1,000	0	0			
	“Venetia Mexborough”	...	...	1,000	0	0			
	“Amy Fairfax”	...	...	1,000	0	0			
	Half Payment Cots—								
	“Charles Kingsley”	...	...	753	16	0			
	“Violet”	...	...	750	0	0			
	Life Cots—Free—								
	“Sibell Evelyn”	...	...	300	0	0			
	“Christian Helena Gildea”	...	...	300	0	0			
	“R. H. Raphael”	...	...	500	0	0			
	Life Cots—Half Payment—								
	“Cranstoun Kerr”	..	...	250	0	0			
							16,853	16	0
	“The Cranstoun Kerr” Cot Endowment Fund			325	2	5			
	* “The Founder’s Gift” as at 1st Jan., 1922	...		32,973	11	11			
	* This Gift is subject to an Annuity of £168 estimated at £2,000								
	(b) For other Special Purposes	...					<i>Nil</i>		
	Forward	...		£50,152	10	4	482	4	10

## FOR CHILDREN.

31st DECEMBER, 1922.

Cr.

	£	s.	d.	£	s.	d.
I. By CASH IN HAND.						
(a) Generally on account of the Hospital ...	2,275	3	2			
(b) "Cranstoun Kerr" Cot Fund ...	325	2	5			
				2,600	5	7
II. ,, SUNDRY DEBTORS ... ..				717	15	9
III. ,, INVESTMENTS ON CAPITAL ACCOUNTS (as detailed on pages 32, 33 & 34.)						
(A) For Special Purposes.						
(a) Hospital Endowments (Schedule A)						
Cot Endowments, etc. ... ..	16,853	16	0			
"The Founder's Gift" In- vestments ... ..	£28,540	19	9			
"The Founder's Gift" Loan on account of St. Nicholas Hospital as at 31st December, 1921 ... ..	4,432	12	2			
				32,973	11	11
				49,827	7	11
(b) Other Special Purposes						
(B) For Buildings and Equipment				<i>Nil</i>		
(C) For General Purposes (Schedule B)—						
As at 31st Dec., 1921	6,272	1	1			
Proportion of Schedule A trans- ferred ... ..	345	8	6			
				6,617	9	7
				56,444	17	6
				Forward		£59,762 18 10

## CHEYNE HOSPITAL

Dr.	BALANCE SHEET,					
	£	s.	d.	£	s.	d.
To Amounts brought forward ...				50,152	10	4 482 4 10
III. ,, CAPITAL ACCOUNTS— <i>continued.</i>						
(B) For Buildings and Equipments—						
Site, Buildings and Equip-						
ment of 59, 60 and 61 Cheyne						
Walk and Lawrence Street						
Annexe, as at 31st Dec., 1921	19,555		5 2			
62 Cheyne Walk as at 31st						
Dec., 1921 ... ..	2,773		1 8			
Part cost of St. Nicholas Hos-						
pital, as at 31st Dec., 1921	2,719		10 7			
“The Founder’s Gift” Loan						
on account of St. Nicholas						
Hospital at 31st Dec., 1921	4,432		12 2			
				29,480		9 7
						79,632 19 11
(C) For General Purposes—						
Capital Account at 31st Dec.,						
1921 ... ..						7,907 10 11
IV. ,, UNEXPENDED INCOME BALANCES						
OF SPECIAL FUNDS—						
V. ,, INCOME AND EXPENDITURE						
ACCOUNT—						
Excess for the year ending						
31st December, 1922 ...				2,631	11 10	
Less Balance 31st Dec., 1921				1,314	9 8	
						1,317 2 2
						<u>£89,339 17 10</u>

*We have examined the foregoing Balance Sheet and the accompanying Statement We have satisfied ourselves that the Investments above-named are standing in the The Title Deeds relating to the Freehold of the Hospital Premises including with Cross Keys Yard, and “The Grange,” St. Nicholas-at-Wade, have been*

## FOR CHILDREN.

31st DECEMBER, 1922 (Continued).

Cr.

	£	s.	d.	£	s.	d.	£	s.	d.
By Amount brought forward ...							59,762	18	10
IV. ,, LAND, BUILDINGS AND EQUIPMENT OF THE HOSPITAL.									
A. The Site, Buildings, Furniture, and Appli- ances of 59, 60 and 61 Cheyne Walk and Lawrence Street An- nexe. Expenditure as at 31st Dec., 1921 ...				19,626	10	4			
B. Buildings and Equip- ment of "The Grange," St. Nicholas-at-Wade, as at 31st December, 1921 ... ..				7,177	7	0			
C. The Building, &c., 62 Cheyne Walk as at 31st December, 1921 ...				2,773	1	8			
							<u>29,576</u>	19	0
V. INCOME AND EXPENDITURE ACCOUNT.									

---



---

£89,339 17 10

---



---

*of Income and Expenditure with the Vouchers, and find the same to be correct.  
names of the Trustees of the Hospital.  
Land and Buildings in Lawrence Street, Chelsea, Nos. 62 & 63 Cheyne Walk,  
produced to us.*

Finsbury Court,  
Finsbury Pavement, E.C. 2.

BALL, BAKER, CORNISH & Co.,  
Chartered Accountants.

27th Feb., 1923.



Dr.

## INCOME AND EXPENDITURE ACCOUNT

		INCOME.					
A. ORDINARY.		£	s.	d.	£	s.	d.
I. ANNUAL SUBSCRIPTIONS (see page 47)						377	9 0
II. DONATIONS (see page 47) ... ..						1,285	13 3
Boxes ... ..							
III. KING EDWARD'S HOSPITAL FUND FOR LONDON ... ..						200	0 0
IV. HOSPITAL SUNDAY FUND ... ..						155	0 0
V. HOSPITAL SATURDAY FUND ... ..						245	0 0
VI. CONGREGATIONAL COLLECTIONS (apart from Hospital Sunday Fund)						6	12 10
VII. WORKMEN'S COLLECTIONS (apart from Hospital Saturday Fund) ... ..							
VIII. ENTERTAINMENTS ... ..						40	12 5
IX. INVESTED PROPERTY.							
Dividends:							
From "The Founder's Gift"	855	17	9				
<i>Less</i> Annuity Paid ... ..	168	0	0				
						687	17 9
From other Investments						466	18 10
						1,154	16 7
Rents ... ..						153	4 0
Income Tax Returned ... ..						360	3 4
Interest on Deposit or Current Account ... ..						11	5 7
						1,679	9 6
<i>Less</i> —Interest to Special Accounts.							
Samaritan Fund and "Cranstoun Kerr Cot" Endowment Fund						9	8 10
						1,670	0 8
Forward ... ..						3,980	8 2

## EXPENDITURE.

A. MAINTENANCE.	£	s.	d.	£	s.	d.	£	s.	d.
I. PROVISIONS.									
1. Meat	165	1	0						
2. Fish, Poultry, etc.	99	7	0						
3. Butter, Bacon, etc.	80	14	4						
4. Eggs	71	3	0						
5. Milk	282	4	1						
6. Bread, Flour, etc.	91	4	3						
7. Grocery	162	18	3						
8. Vegetables and Fruit	109	0	11						
9. Malt Liquors									
10. Aerated Waters and Ice	4	2	6						
							1,065	15	4
II. SURGERY AND DISPENSARY.									
1. Drugs, Chemicals, Disinfectants, etc.	103	5	2						
2. Dressings, Bandages, etc.	56	0	4						
3. Instruments and Appliances	74	11	7						
4. Wines and Spirits	11	14	6						
5. Sundries									
							245	11	7
III. DOMESTIC.									
1. Renewal & Repair of Furniture	81	13	5						
2. „ „ Bedding & Linen	137	18	5						
3. Renewal and Repairs of Hardware, Crockery, Brushes, etc.	37	13	10						
4. Washing done off Hospital premises ( <i>average weekly number of articles 1,162</i> )	230	5	5						
5. Cleaning and Chandlery	40	5	2						
6. Water	24	16	5						
7. Fuel and Lighting—									
(a) Coal	215	0	8						
(b) Gas	118	1	9						
(c) Electric Current	82	1	8						
(d) Oil, Wood, etc.	3	13	2						
8. Uniforms (Nurses, Porters, etc.)	67	17	0						
9. Sundries	9	13	10						
							1,049	0	9
IV. ESTABLISHMENT.									
1. Insurance	24	19	9						
2. Renewals and Repairs	56	18	1						
3. Annual Cleaning	203	15	9						
4. Garden	0	1	6						
							285	15	1
V. SALARIES, WAGES, etc.									
1. Medical	138	17	0						
2. Dispensing	51	18	1						
3. Nursing	536	7	7						
4. Other Officers									
5. Mechanics, etc.									
6. Porters	126	18	8						
7. Domestic Servants	179	16	9						
8. Scrubbers	31	1	11						
9. Pensions	260	0	0						
							1,325	0	0
Forward							3,971	2	9

Dr.

## INCOME AND EXPENDITURE ACCOUNT

		INCOME.					
		£	s.	d.	£	s.	d.
To	Amount brought forward	...				3,980	8 2
X. NURSING INSTITUTION.							
	Private Nurses	...					
	Nurses' and Probationers' Fees	...					
XI. RECEIPTS ON ACCOUNT OF SERVICES							
TO PATIENTS.							
(a)	from In-Patients	...			496	19	7
(b)	from Out-Patients	..					
(c)	from Public Authorities	...			736	5	9
(d)	from Approved Societies	...					
(e)	from Other Sources	...					
					—————	1,233	5 4
XII. OTHER RECEIPTS.							
	Cot Subscriptions (see page 39)...					161	3 7
						—————	
	Total Ordinary Income	...				5,374	17 1
B. EXTRAORDINARY.							
I. LEGACIES.							
	Executors of the late						
	Sir James Innes, Bart.				450	0	0
	Executors of the late						
	Mrs. Helen Seabrook				98	10	0
					—————		
					548	10	0
II. GRANT FROM BOARD OF EDUCATION							
					682	0	0
III. VOLUNTARY HOSPITALS COMMISSION							
	GRANT	...			1,560	0	0
IV. HOSPITALS OF LONDON COMBINED							
APPEAL—							
	Per King Edward's Hospital Fund	...			630	0	0
					—————		
	Total Extraordinary Receipts	...				3,420	10 0
							—————
							<u>£8,795 7 1</u>

## EXPENDITURE.

	£	s.	d.	£	s.	d.	£	s.	d.	
	Brought forward			3,971	2	9				
VI. MISCELLANEOUS.										
1. Printing and Stationery	...	6	12	0						
2. Postages	... ..	22	4	4						
3. Advertisements	... ..									
4. Sundries	... ..	27	19	4						
							56	15	8	
Total Cost of Maintenance								4,027	18	5
B. ADMINISTRATION.										
I. MANAGEMENT.										
1. Official Salaries—proportion of	...	318	8	5						
£477 12s. 8d.	...									
2. Pensions	... ..									
3. Official Printing and Stationery	...	32	0	10						
4. Official Postage and Telegrams	...	18	0	2						
5. Official Advertisements	... ..									
6. Law Charges	... ..									
7. Auditors' Fees	... ..	7	7	0						
8. Sundries, Travelling, etc.	...	25	2	7						
							400	19	0	
Total Cost of Administration								423	17	2
Total Cost of Maintenance and Administration							...	4,451	15	7
C. RENT, RATES AND TAXES.										
I. Rent	... ..									
II. Rates and Taxes	... ..	146	5	0						
Total Rent, Rates and Taxes							...	146	5	0
Total Ordinary Expenditure							...	4,598	0	7
D. EXTRAORDINARY EXPENDITURE.										
I. Interest	... ..									
II. Contributions to other Institutions—										
Expenses of the Branch Hospi-										
tal at St. Nicholas-at-Wade		1,135	12	6						
III. Festivals, Bazaars, etc., for new										
buildings or equipment, or the										
extinction of debt incurred for										
such purposes	... ..									
Festivals, etc., for Endowment or										
other Capital purposes	...									
IV. School Expenses	... ..	430	2	2						
Total Extraordinary Expenditure								1,565	14	8
Balance, being excess of Total										
Income over Total Expenditure								2,631	11	10
								<u>£8,795</u>	<u>7</u>	<u>1</u>

		INCOME.					
A. ORDINARY.		£ s. d.		£ s. d.		£ s. d.	
I.	ANNUAL SUBSCRIPTIONS ... ..					18	2 0
II.	DONATIONS ... ..					27	1 6
	Boxes ... ..						
III.	KING EDWARD'S HOSPITAL FUND FOR LONDON ... ..						
IV.	HOSPITAL SUNDAY FUND ... ..						
V.	HOSPITAL SATURDAY FUND ... ..						
VI.	CONGREGATIONAL COLLECTIONS (apart from Hospital Sunday Fund)						
VII.	WORKMEN'S COLLECTIONS (apart from Hospital Saturday Fund) ... ..						
VIII.	ENTERTAINMENTS.					59	18 3
IX.	INVESTED PROPERTY.						
	Dividends ... ..						
	Rents ... ..						
	Income Tax Returned ... ..						
	Interest on Deposit or Current Account ... ..						
X.	NURSING INSTITUTION.						
	Private Nurses ... ..						
	Nurses' and Probationers' Fees ... ..						
XI.	RECEIPTS ON ACCOUNT OF SERVICES TO PATIENTS.						
	(a) From In-Patients ... ..					427	16 0
	(b) From Out-Patients ... ..						
	(c) From Public Authorities ... ..					517	10 0
	(d) From Approved Societies ... ..						
	(e) From other sources—						
	Board of Education Medical Grant ... ..					225	0 0
XII.	OTHER RECEIPTS.						
	Cot Subscriptions ... ..					120	0 0
	Total Ordinary Income carried forward ... ..					£1,395	7 9

See note on page 40.

EXPENDITURE.

A. MAINTENANCE.	£	s.	d.	£	s.	d.	£	s.	d.
I. PROVISIONS.									
1. Meat ... ..	148	0	2						
2. Fish, Poultry, etc. ... ..	14	7	2						
3. Butter, Bacon, etc. ... ..	52	6	10						
4. Eggs ... ..	6	5	7						
5. Milk ... ..	231	3	0						
6. Bread, Flour, etc. ... ..	64	9	8						
7. Grocery ... ..	112	18	1						
8. Vegetables and Fruit ... ..	75	9	9						
9. Malt Liquors ... ..	0	2	0						
10. Aërated Waters and Ice ... ..	0	13	0						
				705	15	3			
II. SURGERY AND DISPENSARY.									
1. Drugs, Chemicals, Disinfectants, etc.	30	18	10						
2. Dressings, Bandages, etc. ... ..	13	0	10						
3. Instruments and Appliances ... ..	43	18	2						
4. Wines and Spirits ... ..	1	0	6						
5. Sundries ... ..									
				88	18	4			
III. DOMESTIC.									
1. Renewal and Repair of Furniture	103	2	0						
2. „ „ Bedding and Linen	81	13	9						
3. Renewal and Repair of Hardware, Crockery, Brushes, etc. ... ..	29	3	10						
4. Washing done off Hospital pre- mises ( <i>average weekly number</i> <i>of articles 405</i> ) ... ..	177	4	3						
5. Cleaning and Chandlery... ..	30	1	3						
6. Water ... ..	9	15	0						
7. Fuel and Lighting—									
(a) Coal ... ..	105	11	2						
(b) Gas ... ..	49	2	3						
(c) Electric Current ... ..									
(d) Oil, Wood, etc. ... ..	1	8	7						
8. Uniforms (Nurses, Porters, etc.)	25	2	2						
9. Sundries ... ..	27	18	1						
				640	2	4			
IV. ESTABLISHMENT.									
1. Insurance ... ..	5	19	2						
2. Renewals and Repairs ... ..	83	15	2						
3. Annual Cleaning ... ..									
4. Garden ... ..	34	0	5						
				123	14	9			
V. SALARIES, WAGES, &C.									
1. Medical ... ..	73	10	0						
2. Dispensing ... ..									
3. Nursing ... ..	322	6	9						
4. Other Officers ... ..									
5. Mechanics, etc. ... ..									
6. Porters ... ..	3	6	6						
7. Domestic Servants ... ..	160	1	2						
8. Scrubbers ... ..	36	10	3						
9. Pensions ... ..									
				595	14	8			
Forward ... ..				£2,154	5	4			

		INCOME.					
		£	s.	d.	£	s.	d.
To	Amount brought forward	...	...			1,395	7 9
<b>B. EXTRAORDINARY.</b>							
1. LEGACIES.							
	2. GRANT FROM BOARD OF EDUCATION	...			387	10	0
	Total Extraordinary Income					<u>387</u>	<u>10 0</u>
	Total Income	...	...			1,782	17 9

NOTE.—*All Subscriptions and Donations other than the above are included in the Account of the Cheyne Hospital.*

Balance, being excess of Total Expenditure							
over Total Income for the Year	...					1,135	12 6
						<u>£2,918</u>	<u>10 3</u>

## EXPENDITURE.

	£	s.	d.	£	s.	d.	£	s.	d.
Brought forward				2,154	5	4			
1. Printing and Stationery ..	7	9	2						
2. Postages ... ..	36	15	1						
3. Advertisements ... ..									
4. Sundries, Carriage Hire, etc.	71	19	7						
	<hr/>			116	3	10			
Total cost of Maintenance							2,270	9	2
<b>B. ADMINISTRATION.</b>									
<b>I. MANAGEMENT.</b>									
1. Official Salaries—Proportion of £477 12s. 8d. ...	159	4	3						
2. Pensions ... ..									
3. Official Printing & Stationery	25	0	0						
4. Official Postage & Telegrams	7	10	0						
5. Official Advertisements ...									
6. Law Charges ... ..									
7. Auditors' Fees ... ..	3	3	0						
8. Sundries, Travelling, etc. ...									
	<hr/>			194	17	3			
<b>II. FINANCE.</b>									
1. Appeals ... ..									
2. Commission ... ..									
3. Festivals, Bazaars, etc. ...									
Total Cost of Administration							194	17	3
Total Cost of Maintenance and Administration							2,465	6	5
<b>C. RENT, RATES AND TAXES.</b>									
I. Rent ... ..									
II. Rates and Taxes ... ..				37	8	0			
Total Rent, Rates and Taxes							37	8	0
Total Ordinary Expenditure							2,502	14	5
<b>D. EXTRAORDINARY EXPENDITURE.</b>									
I. Interest ... ..									
II. Contributions to other Institutions : Cottage Homes ... ..				1	19	0			
III. Festivals, Bazaars, etc., for new buildings or equipment, or the extinction of debt incurred for such purposes ... ..									
Festivals, etc., for Endowment, or other Capital purpose ...									
IV. School Expenses ... ..				413	16	10			
Total Extraordinary Expenditure							415	15	10
Total Expenditure .. ..							£2,918	10	3



## STATISTICAL TABLES.

## CHEYNE HOSPITAL FOR CHILDREN.

Financial Statistics for Year ending 31st December, 1922.

Compared with those of the previous Year ending 31st December, 1921.

## I.—IN-PATIENTS. (a) NUMBER OF BEDS AND IN-PATIENTS.

	† Numbers in 1921	* Numbers in 1922
(1) Number of Beds available for use ... ..	54	54
(2) Average number of Patients resident daily throughout the year. As counted and recorded daily ... ..	48.66	50.13
(3) Number of In-Patients in the Hospital at beginning of year ...	50	54
(4) Do. do. admitted during the year ...	57	45
(5) Do. do. in the Hospital at the end of the year ...	54	43
(6) Average number of days each Patient was resident ... ..	166	184.83

Ascertained by total number of Cots occupied during the year, divided by the number of Patients treated.

## (b) ANNUAL EXPENDITURE ON IN-PATIENTS APART FROM THAT ON OUT-PATIENTS; AVERAGE COST OF EACH IN-PATIENT PER WEEK; AND AVERAGE COST OF EACH IN-PATIENT.

The following figures do not include any charge for Rent, Rates and Taxes.

	† Expenditure on In-Patients in 1921			‡ Average cost of each In-Patient per week in 1921			* Expenditure on In-Patients in 1922			† Average cost of each In-Patient per week in 1922		
	£	s.	d.	£	s.	d.	£	s.	d.	£	s.	d.
<b>Maintenance :</b>												
(7) Provisions ...	1273	11	0		10	0	1065	15	4		8	1½
(8) Surgery and Dispensary	220	5	9		1	8½	245	11	7		1	11½
(9) Domestic ...	916	9	1		7	2½	1049	0	9		8	0½
(10) Establishment	117	17	0		1	0	285	15	1		2	2½
(11) Salaries, Wages, &c.	1297	5	11		10	2½	1325	0	0		10	1½
(12) Miscellaneous Expenses	58	4	1		0	5½	56	15	8		0	5½
<b>Administration :</b>												
(13) Management	346	9	9		2	8½	400	19	0		3	0½
(14) Finance ...	58	8	4		0	5½	22	18	2		—	2
	£4,288	10	11				£4,451	15	7			

AVERAGE TOTAL COST of each In-Patient per week ...	1	13	9½							1	14	0½
AVERAGE TOTAL COST of each In-Patient ... ..	40	1	7							45	8	6
Found by dividing the Totals of the money columns marked † and * respectively, by the number of In-Patients treated during the year.												

† These averages are found by dividing the amount against each of the Sub-heads (7) to (14), and against the Totals, by the average number of In-Patients resident daily (No. 2 above) and dividing by the number of weeks in the year 52 1/7th.

The Statistical Tables relating to Out-Patients and Washing are not required, as no Out-Patients are treated and no Washing is done on the Hospital premises.

31  
STATISTICAL TABLES.

ST. NICHOLAS HOSPITAL (Branch of Cheyne Hospital.)

Financial Statistics for Year ending 31st December, 1922.

Compared with those of the previous Year ending 31st December, 1921.

I.—IN-PATIENTS. (a) NUMBER OF BEDS AND IN-PATIENTS.

	† Numbers in 1921	* Numbers in 1922
(1) Number of Beds available for use ... ..	29	29
(2) Average number of Patients resident daily throughout the year. As counted and recorded daily ... ..	28.45	29.87
(3) Number of In-Patients in the Hospital at beginning of year	24	26
(4) Do. do. admitted during year	26	38
(5) Do. do. in the Hospital at the end of the year ...	26	29
(6) Average number of days each Patient was resident ... ..	207.12	170.37
Ascertained by total number of Cots occupied during the year, divided by the number of Patients treated.		

(b) ANNUAL EXPENDITURE ON IN-PATIENTS APART FROM THAT ON OUT-PATIENTS; AVERAGE COST OF EACH IN-PATIENT PER WEEK; AND AVERAGE COST OF EACH IN-PATIENT.

The following figures do not include any charge for Rent, Rates and Taxes.

	* Expenditure on In-Patients in 1921			† Average cost of each In-Patient per week in 1921			† Expenditure on In-Patients in 1922			† Average cost of each In-Patient per week in 1922		
	£	s.	d.	£	s.	d.	£	s.	d.	£	s.	d.
<b>Maintenance :</b>												
(7) Provisions ...	841	19	0	11	4		705	15	3		9	0 $\frac{3}{4}$
(8) Surgery and Dispensary	85	6	11	1	1 $\frac{3}{4}$		88	18	4		1	1 $\frac{3}{4}$
(9) Domestic ...	459	2	4	6	2 $\frac{1}{2}$		640	2	4		8	2 $\frac{1}{2}$
(10) Establishment	132	10	10	1	9 $\frac{1}{4}$		123	14	9		1	7 $\frac{1}{4}$
(11) Salaries, Wages, &c.	566	3	1	7	7 $\frac{1}{2}$		595	14	8		7	7 $\frac{3}{4}$
(12) Miscellaneous Expenses	103	16	10	1	4 $\frac{3}{4}$		116	3	10		1	5 $\frac{3}{4}$
<b>Administration :</b>												
(13) Management	171	19	8	2	3 $\frac{3}{4}$		194	17	3		2	6 $\frac{1}{4}$
(14) Finance ...	—	—	—	—	—		—	—	—		—	—
	£2,360	18	8				£2,465	6	5			

AVERAGE TOTAL COST of each In-Patient per week ... ..	1	11	9 $\frac{1}{2}$	1	11	8
AVERAGE TOTAL COST of each In-Patient ... ..	47	4	4 $\frac{1}{2}$	37	18	7
Found by dividing the Totals of the money columns marked † and * respectively, by the number of In-Patients treated during the year.						

† These averages are found by dividing the amount against each of the Sub-heads (7) to (14), and against the Totals, by the average number of In-Patients resident daily (No. 2 above) and dividing by the number of weeks in the year, 52 1/7th.

The Statistical Tables relating to Out-Patients and Washing are not required, as no Out-Patients are treated and no Washing is done on the Hospital premises.

## SCHEDULE A.

## Statement of Property Invested for Special Purposes.

	£	s.	d.
£1,000 Great Central and Midland Railway 3½ per cent. Guaranteed Stock (for "Every Girls" Cot) at cost	1,030	0	0
£337 5s. 4d. Bank of England Stock (for "George Horatio" Cot) at cost	1,000	0	0
£1,037 13s. 2d. Natal Government 3 per cent. Stock, (for "Wordsworth" Cot) at cost	1,000	0	0
£1,000 South Eastern Railway 3 per cent. Preference Stock, (for "Mary Anna Harrison" Cot) at cost	1,007	11	0
£995 Great Northern Railway 3 per cent. Preference Stock, (for "Arminel Cary" Cot) at cost	1,002	10	0
£923 Nottingham Joint Station 3 per cent. Stock (for "The Children's" Cot) at cost	1,000	0	0
£977 West Australian 3½ per cent. Stock (for "Katie Mackenzie Fairfax" Cot) at cost	1,000	0	0
£310 10s. New South Wales 3 per cent. Stock, (for "Christian Helena Gildea" Cot) at cost	300	0	0
£786 London and South Western Railway 4 per cent. Consolidated Preferential Stock, 1881, (for "Winifrid" Cot) at cost	1,000	0	0
£308 Nottingham Corp. 3 per cent. Redeem. Stock, (for "Cranstoun Kerr" Cot) at cost	280	1	0
£900 Great Eastern Railway 4 per cent. Guaranteed Stock (for "Jean Marjorie Campbell" Cot) at cost	1,076	13	6
£495 Gt. Northern Railway 3 per cent. Preference Stock, (for "R. H. Raphael" Cot) at cost	498	15	0
£1,015 Madras and Southern Mahratta Ry. 4 per cent. Debenture Stock, (for "Anne Fairfax" Cot) at cost	999	18	0
£1053 5 per cent. War Loan Stock, 1929-1947 (for "Venetia Mexborough" Cot) at cost	1,000	0	0
£1,015 2s. 6d. West Australian Government 5¾ per cent. Stock 1930/40 (for Amy Fairfax Cot) at cost	1,000	0	0
Carried forward ...	£13,195	8	6

## SCHEDULE A.—Continued.

	£	s.	d.	£	s.	d.
Brought forward				13,195	8	6
Freehold Property, 63, Cheyne Walk, Chelsea, and Cross Keys Yard, part of total value of £6,263 17s. 6d., allocated as security for the following:—						
£1,000 for "Daniel Pidgeon" Cot.						
£300 for "Sibell Evelyn" Cot.						
£1,000 for "The Founder's" Cot.						
£753 16s. for "Charles Kingsley" Cot.						
£750 for "Violet" Cot.			...	3,803	16	0
(B) Legacy:—				16,999	4	6
£192 Nottingham Corp. 3 per cent. Redeem. Stock at cost (for Mrs. Montefiore's Legacy)					200	0 0
				17,199	4	6
Less Proportion paid in excess of Endowments, transferred to General Purposes (Sched. B)					345	8 6
				16,853	16	0
INVESTMENTS ON ACCOUNT OF "THE FOUNDER'S GIFT" CAPITAL ACCOUNT:—						
£1,500 Great Western Railway 5 per cent. Guaranteed Stock at cost			2,039	6	6	
£1,600 Southern Punjab Railway 4 per cent. Cumulative Preference Stock at cost			1,528	1	0	
£3,100 East Indian Railway 3 per cent. New Debenture Stock at cost			2,824	18	0	
£1,000 Great Central and Midland Railway 3½ per cent. Guaranteed Stock at cost			1,040	1	0	
£5,000 Midland Railway 2½ per cent. Debenture Stock at cost			3,987	11	0	
£1,500 Canadian Pacific Railway Perpetual 4 per cent. Consolidated Debenture Stock at cost			1,665	19	3	
£2,000 London and South Western Railway 4 per cent. Consolidated Preference Stock, 1881 at cost			2,412	3	6	
£3,000 London County 3 per cent. Consolidated Stock at cost			2,805	1	0	
£3,000 Metropolitan Water Board (B) Stock at cost			2,926	18	6	
£400 India 3 per cent. Stock at cost			311	0	0	
£7,000 Mortgage Advance on Freehold Property: Brewers Green Mews, etc.			7,000	0	0	
			28,540	19	9	
Loan on account of St. Nicholas Hospital			4,432	12	2	
				32,973	11	11
				£49,827	7	11

## SCHEDULE B.

## Statement of Property Invested for General Purposes.

	£	s.	d.	£	s.	d.
£430 E. Lacon & Co., Ltd., Mortgage Debenture Stock at cost				488	1	0
£1,050 Bombay, Baroda and Central India Railway Capital Stock at cost				1,055	8	10
£500 Western Australian Government 3½ per cent. Inscribed Stock (1940-1960) at cost				495	13	8
£20 4½ per cent. War Loan Stock ... ..				20	0	0
£170 North British (Edinburgh and Glasgow Railway) 4½ per cent. Preference Stock at cost				250	0	0
£147 5 per cent. War Loan Stock, 1929-1947 at cost				140	0	0
				<hr/>		
				2,449	3	6
Proportion of Investments as per Schedule A transferred ... ..				345	8	6
				<hr/>		
				2,794	12	0
No. 63, Cheyne Walk (purchased with Cross Keys Yard) Proportion of Total Cost as at 31st December, 1911	2,762	7	0			
Cross Keys Yard (purchased with 63, Cheyne Walk) Proportion of Total Cost, as at 31st December, 1912	3,501	10	6			
	<hr/>			6,263	17	6
<i>Less</i> Amount allocated as security for Cot Endowments ... ..	3,803	16	0			
	<hr/>			2,460	1	6
"Old Church" Studio and Porter's Lodge cost to 31st December, 1917 .. ..				1,362	16	1

---

£6,617 9 7

---

ENDOWED AND SUBSCRIBED COTS.

DECEMBER 31ST, 1922.

---

THE ENDOWED COTS.

---

THE "CHARLES KINGSLEY" COT,

Founded July 1, 1878, in memory of the late Charles Kingsley.

THE "EVERY GIRLS' " COT,

Endowed 1883, by Miss Alicia Leith and some friends.

THE "VIOLET" COT,

Founded February, 1884.

THE "DANIEL PIDGEON" COT,

In Memoriam, 1900. Permanently Endowed January, 1901, by J. M. P.

THE "KATIE MACKENZIE FAIRFAX" COT.

THE "WINIFRID" COT,

Instituted in December, 1882, by Mr. and Mrs. Wilfrid Loder,  
and now Endowed by Bequest of the late Wilfrid Loder, Esq.

"THE FOUNDER'S " COT,

Instituted by the late Mr. Wickham Flower, and completed  
7th November, 1906.

"THE "JEAN MARJORIE CAMPBELL" COT,

Endowed by the late Miss Jane Arabella Campbell, in memory of her  
Niece, Jean Marjorie Campbell, 18th March, 1907.

THE "GEORGE HORATIO" COT,

Endowed in 1886 by Mr. and Mrs. Henry Lucas, in memory of their  
little Son, George Horatio Lucas.

THE "WORDSWORTH" COT,

Named May, 1891, and Endowed January, 1898, from the Proceeds of  
Entertainments given by the Pupils of Mrs. Henry Wordsworth.

**THE "MARY ANNA HARRISON" COT,**

Endowed by the late Lawrence Harrison, Esq., in memory of his Wife,  
January 1st, 1899.

**THE "ARMINEL CARY" COT,**

Instituted in September, 1889, and Endowed in February, 1900, by Colonel  
and Mrs. Lucius Cary, in memory of their little Daughter, Arminel Cary.

**THE "CHILDREN'S" COT,**

Instituted January, 1884, and endowed by Children's Subscriptions,  
and Collections made by Children of St. Peter's, Cranley Gardens,  
Mrs. Hollams, The Children of Shere, The Boys of Bengoe School,  
and others. Hon. Treasurer, Miss Evelyn Pearse.

**THE "ANNE FAIRFAX" COT,**

Endowed 13th December, 1913, in memory of Mrs. Anne Fairfax,  
by her two Daughters.

**THE "VENETIA MEXBOROUGH" COT,**

Endowed 1917 under the Will of the late Countess of Mexborough.

**THE "AMY FAIRFAX" COT.**

Endowed 21st January, 1920, by Bequest of the late Miss Amy Fairfax.

---

**SUBSCRIBERS' COTS. (FREE.)**


---

**THE "ALL FELLOWS' AND CLAUD ALEXANDER" COT.**

Instituted Lady Day, 1901, and supported by Herbert Alexander, Esq.

**THE "ST. NICHOLAS" COT,**

Instituted December, 1916, by "The St. Nicholas Cot League."

**THE "ST. THOMAS'" COT,**

Instituted December, 1919, by "The St. Nicholas Cot League."

**THE "ST. AUGUSTINE" COT,**

Instituted 16th June, 1920, by "The St. Nicholas Cot League."

## FREE LIFE COTS.

---

### THE "LUCY ELAM" COT,

Presented by the Committee to Miss Elam, in recognition of her services in organising the Sale of Work in November, 1896, by which over £400 was obtained.

### "THE RICHARD H. RAPHAEL" COT,

Instituted on 2nd March, 1910, by Mrs. R. H. Raphael, in memory of her husband.

### THE "CHRISTIAN HELENA GILDEA" COT,

Established 20th December, 1901, by the Members of "The Children's Salon," in connection with "The Gentlewoman" and christened in the name of the Daughter of the Founder and Chairman of the "Soldiers and Sailors" Families Association.

### THE "SIBELL EVELYN" COT,

Endowed by the Hon. Mrs. Lumley for lifetime. In memory of Sibell Evelyn Lumley, Daughter of Lieut. - Col. The Hon. Osbert and Mrs. Lumley.

---

## HALF PAYMENT LIFE COTS.

---

### THE "CRANSTOUN KERR" COT,

Instituted June 9th, 1879, by Miss Kerr and Miss A. Kerr, and Endowed May 10th, 1909, in their memory during the lifetime of Miss M. Kerr (now Mrs. Clifford Gilbert).

---

## SUBSCRIBERS' COTS. (HALF PAYMENT.)

---

### THE "HERBERT'S" COT.

Instituted December 30th, 1880.

### THE "KENSINGTON" COT.

Instituted May 9th, 1882, and supported by the Children, past and present, of Kensington, by the offertories at the Children's Festival Service at St. Mary Abbots' Church, and by a few other Friends.

Hon. Treasurers—Mrs. Pearson and Miss Gibbes.



**THE "BURTON" COT,**

Instituted December 25th, 1889, by Mrs. Buckley  
(now Lady Wrenbury).

**THE "DOROTHY" COT,**

Instituted August, 1891, and supported by J. Douglas Charrington, Esq

**THE "RICHARD CHARLES RODES MILNES" COT,**

July 30th, 1882—March 20th, 1890,  
Instituted January 1st, 1896, and supported by  
The Hon. Mrs. Arthur Henniker.

---

**NAMED COTS.**


---

**THE "LILY" COT.****THE "COL. JOHN KELLY HOLDSWORTH, R.A.,  
MEMORIAL COT."**

Instituted by the Exors. of the late Mrs. Holdsworth, in memory  
of her husband.

**THE "VAUGHAN" COT,**

Instituted February, 1910, by Mrs. Batt-Mills, in loving memory  
of her Son, G. Vaughan Batt-Mills, R.N.

**THE "WINIFRED SLINGSBY" COT,**

Named on 30th April, 1919, by Miss El. S. Peirse-Duncombe,  
in memory of her sister, Mrs. J. G. Eustace.

**THE "ST. PETER'S, CRANLEY GARDENS,  
"WAR MEMORIAL" COT.**

Named in 1922 by the Trustees, in memory of those Members of the  
Church who fell in the Great War.

**THE "ETHEL SLINGSBY" COT,**

Named in 1922, by Miss El. S. Peirse-Duncombe, in memory of her  
sister, Miss Ethel Slingsby.

## ENDOWED AND SUBSCRIBED COTS.

December 31st, 1922.

### ENDOWED COTS.

(Endowments Invested.	Dividends <i>per</i> Trustees of Cheyne Hospital.)							
			£	s.	d.	£	s.	d.
Arminel Cary (Free) ... ..			1000	0	0			
Daniel Pidgeon (Free) ... ..			1000	0	0			
Every Girls' (Free) ... ..			1000	0	0			
George Horatio (Free) ... ..			1000	0	0			
Mary Anna Harrison (Free) ... ..			1000	0	0			
Wordsworth (Free) ... ..			1000	0	0			
Katie Mackenzie Fairfax (Free) ... ..			1000	0	0			
Winifrid (Free) ... ..			1000	0	0			
Children's Cot (Free) ... ..			1000	0	0			
Jean Marjorie Campbell (Free) ... ..			1000	0	0			
"The Founder's Cot" (Free) ... ..			1000	0	0			
Anne Fairfax (Free) ... ..			1000	0	0			
Venetia Mexborough (Free) ... ..			1000	0	0			
Amy Fairfax ... ..			1000	0	0			
Charles Kingsley (Half-payment) ... ..			753	16	0			
Violet (Half-payment) ... ..			750	0	0			
						15503	16	0
Sibell Evelyn (Life. Free.) ... ..			300	0	0			
Richard H. Raphael (Life. Free) ... ..			500	0	0			
Christian Helena Gildea (Life) ... ..			300	0	0			
Cranstoun-Kerr (Life) ... ..			250	0	0			
						1350	0	0
						£16853	16	0

### SUBSCRIBED COTS.

			£	s.	d.			
All Fellows and Claud Alexander ... ..			40	0	0			
Burton ... ..			30	0	0			
Dorothy .. ..			30	0	0			
Herbert's ... ..			1	10	0			
Kensington ... ..			29	13	7			
Richard Charles Rodes Milnes ... ..								
						£131	3	7

### ST. NICHOLAS HOSPITAL.

			£	s.	d.			
St. Nicholas Cot								
<i>per</i> St. Nicholas Cot League ... ..			40	0	0			
St. Thomas Cot								
<i>per</i> St. Nicholas Cot League ... ..			40	0	0			
St. Augustine's Cot								
<i>per</i> St. Nicholas Cot League ... ..			40	0	0			
						£120	0	0

## LEGACIES.

*IMPORTANT NOTICE.***MORTMAIN AND CHARITABLE USES ACT, 1891.**

Land and House Property may now be given by Will to or for the benefit of a Charity.

See former Reports for previous Legacies.

		£	s.	d.
1911	Executors of the late Miss Jane Godwin ...	200	0	0
1912	Executors of the late Mrs. Charlotte M. Barnato ...	100	0	0
	Executors of the late Miss M. B. Hubbard ...	50	0	0
	Executors of the late Mrs. Girdlestone ...	5,111	2	5
	Executors of the late Mrs. Flury ...	25	0	0
1913	Executors of the late Mrs. Sarah Leitch ...	10	0	0
1914	Executors of the late Wm. Stansfield, Esq. ...	2,425	19	5
1915	Executors of the late Wm. Stansfield, Esq. ...	7	16	0
	Executors of the late Mrs. Mary Kelly Holdsworth ...	250	0	0
1916	Executors of the late Wm. Stansfield, Esq. ...	4	0	0
	Executors of the late Miss E. M. Kollé ...	50	0	0
	Executors of the late Miss Mary Jane Cook ...	50	0	0
1917	Executors of the late Miss M. E. Gill ...	308	10	0
	Executors of the late Countess of Mexborough ...	800	0	0
	Executors of the late William Stansfield, Esq. ...	4	0	0
	Executors of the late Mrs. Edward Phillips ...	1,000	0	0
	Executors of the late Miss Frances M. Cardwell ...	300	0	0
	Executors of the late Leopold Salomons, Esq. ...	250	0	0
1918	Executors of the late Mrs. W. F. Pearse-Thompson ...	53	8	11
	Executors of the late William Stansfield, Esq. ...	10	3	0
1919	Executors of the late Asher Wertheimer, Esq. ...	500	0	0
	Executors of the late Miss E. Cunnington ...	50	0	0
	Executors of the late Miss Annie W. Harrison ...	500	0	0
	Executor (The Public Trustee) of the late Mrs. L. Block ...	100	0	0
1920	Executors of the late William Stansfield, Esq. ...	3	2	6
	Executors of the late Sir James Innes, Bart. ...	1,750	0	0
1921	Executors of the late H. A. Frisby, Esq. ...	50	0	1
	Executors of the late Mrs. Edgell Hunt ...	60	5	0
1922	Executors of the late Sir James Innes, Bart. ...	450	0	0
	Executors of the late Mrs. Helen Seabrook ...	98	10	0

## LIST OF GOVERNORS.

## LEGACIES.

- Abrahams, Alphonse, M., Esq., 16, Upper Hamilton Terrace, N.W. 8.  
 Bell, Miss Amy C., Sesame Club, 28, Dover Street, W. 1.  
 Conway, C. J., Esq., 2, Garden Court, Temple, E.C.  
 Cunliffe, Sir Robert Ellis, Board of Trade, Whitehall, S.W. 1.  
 Edge, H. T., Esq., 5, Waterloo Street, Birmingham.  
 Hall, Miss C. V., 10, Mulberry Walk, Chelsea, S.W. 3.  
 Hubbard, Miss M. M. E.  
 Huntsman, James E., Esq., 10, Drapers Gardens, E.C. 2.  
 Loder, Mrs. Wilfred, The High Beeches, Handcross.  
 Lush-Wilson, Herbert W., Esq., 2, Paper Buildings, Temple, E.C. 4.  
 Montefiore, Claude, Esq., 12, Portman Square, W. 1.  
 Mortimer, Stanley, Esq.  
 Mott, Thomas, Esq.  
 Mumford, Sydney L., Esq., 1, New Inn, Strand, W.C. 2.  
 Rowe, George William, Esq. 28 Lincoln's Inn Fields, W.C. 2.  
 Salamons, Mrs. L. 7, Stratton Street, Piccadilly, W. 1.  
 Saunders, Major.  
 Scott, H. C., Esq. 14, Royal Crescent, Brighton.  
 Shoubridge, H., Esq.  
 Skinner, Colonel, T. H., Tillington Hill, Petworth, Surrey.  
 Spencer, Samuel, Esq.  
 Thomas, Gilbert W., Esq., 115, Gower Street, W.C. 1.  
 Warren, R. A. Esq., 99, Great Russell Street, W.C. 1.  
 Whitby, Humphrey, Rev. 31, Harman Street, Kingsland Road, E.  
 Winter, Moritz, Esq. 79, Mark Lane, E.C. 3.  
 Underwood, W. M., Esq., The Manor House, Wickmere, Norfolk.

## DONATIONS.

- Adler, Mrs.  
 Brenton, Mrs.  
 Bullivant, F. A., Esq., Queen Anne's Mansions, S.W. 1.  
 Cohen, Miss Constance, 31, Oxford Square, W. 2.  
 Fishmongers, Worshipful Company of, Fishmongers' Hall.  
 Hirsch, Henry, Esq., 28, Austin Friars, E.C. 2.  
 Hore, E., Esq., c/o Messrs. Stephens & Stephens, 20, Essex Street, W. C. 2.  
 Hospital Sunday Fund.  
 Hospital Saturday Fund.  
 "MARNIE."  
 Raphael, Mrs. R. H., 43, Grosvenor Street, W. 1.  
 Streatfeild, Mrs. E. J., 22, Park Street, W. 1.  
 Somerleyton, The Rt. Hon. Lord, P.C., K.C.V.O.

## SUBSCRIPTIONS.

- Batt-Mills, Mrs.  
 The Rt. Honble. The Earl of Cromer, M.V.O.  
 Geiger, Mrs., 75, Onslow Gardens, S.W. 7.  
 Harrison, Leonard F., Esq., 25, Austin Friars, E.C. 2.  
 Hichens, Harrison, Woolston & Co., Messrs.  
 Lucas, Mrs. H., Bramblehurst, East Grinstead.  
 Minet, W., Esq., 48, Gloucester Square, W. 2.  
 Petro, Mrs. N. M.  
 Poole, Reginald Ward, Esq.  
 Sinclair, Lady  
 Turner, Alfred M., Esq., 11, Carlyle Mansions, Chelsea, S.W. 3

## LIST OF SUBSCRIPTIONS AND DONATIONS

Received during the Year ending December 31st, 1922.

\* Names marked with an asterisk are Governors.  
(For other Governors, see separate List.)

## TO SUBSCRIBERS.

Early advice of changes of address, or of any inaccuracies in the following list, is particularly requested.

## CHEYNE HOSPITAL.

	Subs.			Dons.		
	£	s.	d.	£	s.	d.
H.M. The King (Special Christmas Donation) ...				5	0	0
H.R.H. The Prince of Wales " ...				5	0	0
H.M. Queen Alexandra ...				50	0	0
A.M. ...	5	5	0			
Alexandra Day Committee, The ...				50	0	0
Anonymous ...	1	0	0			
„ per Mrs. Short ...				1	0	0
Anderdon, H. E. Murray, Esq., Henlade House, Taunton ...	2	2	0			
Arden, Douglas, Esq., East Burnham House, near Slough ...	3	3	0			
Atkin, S., Esq., 49, Elm Park Gardens, S.W. ...	1	1	0			
Banon, Mrs. Lionel ...	3	0	0			
Batten, Mrs. Mount, Mornington Lodge, West Kensington ...	2	2	0			
Battiscombe, Miss ...	0	10	6			
Beddoes, Mrs. ...						
“Beggars’” Garden Party, per Miss L. Playfair and Lady Russell ...				191	15	10
Bell, Mrs. Courtenay, 86, Ashley Gardens ...	1	1	0			
Bevington, Mrs. A., Silverwood, Pyrford ...	1	1	0			
Blunt, Mr. and Mrs. Reginald, 12, Carlyle Mansions, Chelsea ...	2	2	0			
Box for Donations at the Hospital ...				1	18	1
Bullivant, Mrs. B. S. ...	1	1	0			
Bruce, Dowager Lady ...	2	2	0			
Byrne, Mrs., 65, Cadogan Place, S.W. ...	2	2	0			
C. E. G. ...	1	1	0			
Carlyle School, The Pupils of, per Miss A. D. Crosby ...				9	0	0
Castle Laundry, The Proprietors of ...	3	3	0			
Chelsea Old Church Collection ...				1	11	7
Chelsea, Mayor of, Relief Fund ...				50	0	0
Carried forward ...	£31	16	6	365	5	6

	Subs.			Dons.		
	£	s.	d.	£	s.	d.
Brought forward ...	31	16	6	365	5	6
"Christmas Stocking," A (N.O.M.C.), for 1921 ...	1	0	0			
"Christmas Stocking," In memory of a, (E.N.M.C.) ...	1	0	0			
Clark, Mrs., 255, Cromwell Road, S.W. ...	1	0	0			
Clarke, Mrs. ... ..	1	1	0			
Clarke, Miss, Belmont, Lifford, co. Donegal ...	1	0	0			
Clifford, Mrs. E. H. ... ..				3	3	0
Cohen, Mrs. Frank, 31, Oxford Square, W. ...	1	1	0			
Collins, Mrs. L., Angmaring, Sussex ... ..	1	1	0			
Colvin, Miss L. de V. ... ..	1	1	0			
Colvin, Miss H. ... ..				1	0	0
Combermere, Viscountess ... ..	1	1	0			
Connop, Mrs. S. E. ... ..	1	1	0			
Copland, Miss ... ..				1	0	0
Courtney of Penwith, Lady ... ..	2	2	0	5	0	0
*Cromer, The Rt. Hon. The Earl of, M.V.O. ...	10	10	0			
Crowder, A. G., Esq., 65, Portland Place, W. ...	2	2	0	2	2	0
Curtis-Hayward, Miss ... ..	0	10	0			
Dallington Hospital Parade, per Rev. J. G. le P. Hulton ... ..				1	0	0
Daymond, Miss E. R. ... ..	1	1	0			
Deane, Miss C. Maude, 200, Brompton Road ...	1	1	0			
Denny, Mott, and Dickson, Messrs., Limited, 14, Fenchurch Street ... ..				3	3	0
Drybrough, T. B., Esq., per C. O. S. ... ..	8	0	0			
Duffield, E. Ross, Esq., 27, Holland Park, W. ..	1	1	0			
Dyers, The Worshipful Company of ... ..				2	2	0
E. D. V. ... ..	2	2	0			
E. E. S. ... ..	5	5	0			
Edmunds, Rev. N. (Collection at Children's Harvest Thanksgiving Service, St. Saviour's, Valley End, Chobham) ... ..				C	18	10
Elgee, Mrs. ... ..	0	10	6			
Emery, Frederic W., Esq., 16, Tregunter Road, S.W.	1	1	0			
Farquhar, Alfred, Esq., 11, Belgrave Square, S.W.	2	2	0			
Feilden, Miss C. H., Thorncliffe, Bonchurch, I.W.	2	2	0			
Feilden, Miss M. G. ,, ,, ,,	2	2	0			
Field, Miss ... ..	1	1	0			
Fleet, Algernon M., Esq., Darenth Grange ...	5	5	0			
Fleming, Mrs., 12, Beaufort Gardens, S.W. ...	0	10	0			
Forbes, Miss ... ..	2	2	0			
Foster, Mrs. Hubert ... ..	2	2	0			
Franks, Mrs. T. J., Ballyscaddane, Knocklong, Ireland	2	2	0			
Frank, Miss E., 93, Cheyne Walk ... ..				2	2	0
Fraser, Miss, 37, Cheyne Court, S.W. ... ..	1	1	0			
*Geiger Mrs. 75, Onslow Gardens, S.W. ... ..	10	10	0			
Gibbes, Mrs. M. G. ... ..	1	1	0			
Gibbon, Mrs. C. Henry, 75, Lancaster Gate ...	3	3	0			
Gibbon, Master Henry ... ..	0	10	6			
Gibbon, Miss May, 75, Lancaster Gate ... ..	0	10	6			
Carried forward ...	£113	12	0	386	16	4

	Subs.			Dons.		
	£	s.	d.	£	s.	d.
Brought forward ...	113	12	0	386	16	4
Gordon-Lennox, Lady Caroline, 30, Wilton Crescent, S.W. ...	1	1	0			
Green, Miss Hilda, The Whittern, Kington, Hereford	0	10	0			
Gretton, Miss Muriel ...	3	3	0			
Gunston, Miss, 51, Ennismore Gardens, S.W. ...	2	0	0			
Hamilton, Miss M. E., The Cottage, West Malvern...	1	1	0			
Hamer, Messrs. H., & Sons, Dewsbury ...	1	1	0			
Hammersley, Mrs. ...	1	1	0			
Hankey, Mrs. E., Notton House, Chippenham ...	2	2	0			
Hardy, Mrs., 4, Palace Gate, S.W. ...	1	1	0			
*Harrison, Leonard, F., Esq., Orchards, East Grinstead ...	10	10	0			
Harrison, Robert, Esq., Shiplake Court, Henley ...	5	5	0			
Harrison, Rev. C. ...				1	1	0
Hartopp, W. E., Esq., 168 Warwick Street, S.W. ...	1	1	0			
Hellett, Mr. H. ...				13	9	0
Hereford, Miss (1922 sub. paid in 1921) ...						
*Hichens, Harrison, Woolston & Co., Messrs., Austin Friars ...	10	10	0			
Hirsch, L., Esq., 10, Kensington Palace Gardens, W.	2	2	0			
Hollams, Mrs. (Collected by) Dene Park, Tonbridge				5	0	0
Hollams, Mrs. ... £1 0 0						
Hollams, F. W., Esq. ... 1 0 0						
Hollams, Miss ... 0 10 0						
Fox, Mrs. ... 1 0 0						
J. H. ... 1 0 0						
Powell, Lady ... 0 10 0						
	£5 0 0					
Hicks, Mrs. ...				10	0	0
Holt, Miss Annie, Summerhays, Woldingham, Surrey	2	2	0			
Hornby, C. H. St. J., Esq., Shelley House, Chelsea Embankment, S.W. ...	2	2	0			
*Horne, Mrs., Shackleford, Godalming ...	2	2	0			
Hospital Sunday Fund ...				155	0	0
*Hospital Saturday Fund ...				245	0	0
Illingworth, Mrs. ...						
Jarvis, Miss M., Burley Lodge, Oatlands Park ...	1	1	0			
Jenkins, Mrs. E. S. ...	2	2	0			
Johnston, Mrs. F. Alexander, 56, Queen's Gate ...	5	5	0			
Jonas, Henry, Esq. (1922 sub. paid in 1921) ...						
Jones, Lady ...	5	5	0			
Jones Sydney E., Esq., 2, Suffolk Lane, E.C. ...	2	2	0			
Kemp-Welch, H., Esq. ...	2	2	0			
King Edward's Hospital Fund for London ...				200	0	0
Knight, Miss G. (collected by) ...				2	10	0
Knollys, Col. Sir Hy., R.A., K.C.V.O. ...	2	2	0			
Carried forward	£182	5	0	1018	16	4

	Subs.			Dons.		
	£	s.	d.	£	s.	d.
Brought forward ...	182	5	0	1018	16	4
Lambton, Miss Dorothy, Redfield, Winslow ...	2	2	0			
Lane-Fox, The Hon. Mrs., Bramham Park, Boston Spa, Yorkshire ...	1	0	0			
Le Bas, Capt. R. S., 38, Hornton Court, W. ...	1	1	0			
Legard, Frances, Lady, 22, Cadogan Square, S.W. ...	3	3	0			
LeGeyt, Miss, The Knoll, St. Saviour's, Jersey ...	0	5	0			
Leith, Miss A. A. ...	1	1	0			
Leith, Miss Emily ...	1	1	0			
Lenny, Capt. C. S., R.N. ...				0	10	0
Lewis & Lewis, Messrs. ...	5	5	0			
Lightfoot, Miss M. T. ...	1	1	0			
Loffet, Mrs. Lucien ...				2	2	0
Lloyd, The Misses, 24, Carlyle Mansions ...	3	3	0			
Longman, Miss M., 18, Thurloe Square, S.W. ...	1	1	0			
*Lucas, Mrs. Henry, Bramblehurst, East Grinstead ...	10	10	0			
M. E. C. H. ...	1	1	0			
MacLeay, Mrs. Oswell, 29, Draycott Place, S.W. ...	5	0	0			
Matthey, Miss Violet, Rose Mount, Eastbourne ...	1	1	0			
May, Mrs., St. Margaret's, Hampstead Heath ...	1	1	0			
Mellersh, Miss, Ashbrooke House, Godalming ...	0	5	0			
Mellersh, Miss M. ...	0	5	0			
Mellersh, Miss Agnes ...	0	5	0			
Mellersh, Miss Isabel ...	0	5	0			
Mellish, Miss E., Hodsock Priory, Worksop ...	2	0	0	1	0	0
Mills, Miss L. C. ...				2	0	0
*Minet, Mrs., 48, Gloucester Square, W. ...	10	10	0			
Mitchell, Mrs. 5, Alexander Street, Neath ...				1	10	0
Mitchell-Innes, Miss ...	1	1	0			
Monkswell, Dowager Lady ...						
Moore, H. T., Esq., Redbourne ...	1	1	0			
Moore, Mrs. H. T., Redbourn House, Redbourn ...	1	1	0			
Morgan, Vaughan, Mrs., 22, Harrington Gardens ...	3	3	0			
Morris, Mrs. Percy, 79, Elm Park Gardens, S.W. ...	5	5	0			
Murray, Miss M., 13, Cheyne Gardens (Harvest Festival Collection, St. Luke's Infants Sunday School) ...				0	7	11
Neil, Mrs. M. M., Reigate ...	1	1	0			
Newbery, Mrs., Stafford House, Broxbourne ...	1	0	0			
Newsome, Major T. H., Dewsbury ...	1	1	0			
Nicholson, Dowager Lady ...	1	1	0			
Orpen, Sir W., K.B.E. A.R.A., 11, Royal Hospital Road ...	1	1	0			
Owen, Mrs. F. B. ...				1	1	0
Palairt, Mrs., 15, Douro Place, W. 8. ...				2	0	0
Palmer, Miss ...	5	0	0			
Parnell, Miss G. M. ("The Lucy Lockit Figure") ...				15	15	0
Parnell, Miss Gwendoline ...				1	1	0
Peirse-Duncombe, Miss, 65, Evelyn Gardens, S.W. ...	1	1	0			
Pierse-Duncombe, Miss G. S. ...	1	1	0			
Carried forward ...	£258	8	0	1046	3	3



	Subs.			Dons.		
	£	s.	d.	£	s.	d.
Brought forward ...	258	8	0	1046	3	3
Peirse-Duncombe, Miss, 65, Evelyn Gardens, S.W. (Special Donation)				250	0	0
"    "    "    (Proceeds of Concert at Kensington Town Hall)				18	4	0
"    "    "    (Sale of Work)				4	16	9
*Petro, Mrs. Mildred ...	10	10	0			
Phillips, Arthur, Esq. ...	1	10	0			
Playfair, Miss ...	2	2	0			
*Poole, Reginald Ward, Esq. ...	10	10	0			
*Pritchard, Hugh M., Esq. ...	10	10	0			
Quick, Miss ...				1	1	0
Radcliffe, Mrs., Binfield, Berks ...	1	1	0			
Reiss, Fritz, Esq., 42, Pont Street, S.W. ...	5	5	0			
Rey, Mrs. (In memory of Roderick and Tony Rey)				2	2	0
Rickards, Miss E. M., 11, The Grove, Boltons, S.W. (collected by) ...				0	7	7
Ritchie, Miss, 6, Redcliffe Gardens ...	1	1	0			
Royds, J. F. T., Esq., The Hill, Sandbach, Cheshire	1	1	0			
Russell, Hon. Maud, Kirkby Mallory, Hinckley ...	1	1	0			
S.C.C. ...				1	0	0
Saddlers, The Worshipful Company of ...				5	5	0
Sainsbury, Mrs. ...	1	1	0			
Samuel, Miss Evelyn Sylvester, 19, Cadogan Place, S.W. ...	1	1	0			
Saunders, Mrs. Sidney, Watlington Vicarage, Tetsworth, Oxon. ...	1	1	0			
Schreiber, Mrs., Nascot Grange, Watford...	1	1	0			
Schuster, Mrs. Ernest ...	2	2	0			
Seligman, Mrs., Iden Manor, Staplehurst ...						
Seligman, Mrs. W. L., 33, Prince's Gate, W. ...	1	1	0			
Shaxson, T. S., Esq., 33, Nicholas Lane, E.C. ...	1	1	0			
Shaxson, Thomas, Esq., 33, Nicholas Lane, E.C. ...	1	1	0			
Sidey, Mrs. C. Lyon ...	5	5	0			
*Sinclair, Lady ...	10	10	0			
Suter, Miss E. (Proceeds of dances at Kimbolton) ...				9	0	0
Smith, Mrs. Herbert, Marton, Rugby ...	1	1	0			
Smith, Mrs. Reginald ...	1	1	0			
Spoor, James L., Esq. ...	1	1	0			
Spring-Rice, Miss Agnes ...	1	1	0			
Spring-Rice, Miss G. E. ...	1	1	0			
Stainbank, Miss, 15, Clareville Grove, S.W. ...	2	2	0			
Steer, P. W., Esq., 109, Cheyne Walk, S.W. ...	2	2	0			
Sterndale, The Rt. Hon. Lord, P.C. ...	5	5	0			
Stoop, Mrs., West Hall, Byfleet, Surrey ...	1	0	0			
Strange, Miss L. G. ...	2	2	0			
Strong, Miss A. J. ...	2	2	0			
St. Peter's, Cranley Gardens, Memorial Cot (per Col. H. S. Brownrigg, Treasurer) ...				400	0	0
Carried forward ..	£348	1	0	1737	19	7

	Subs.			Dons.		
	£	s.	d.	£	s.	d.
Brought forward ...	348	1	0	1737	19	7
Tate, Mrs. A. G. ...	1	1	0			
Taylor Restell, Mrs. 15, Boltons, S.W. ...	1	1	0			
Taylor, Mrs. (Collection at Kimbolton) ...				1	0	0
Taylor, Lady Elizabeth ...				2	0	0
Trollope, The Misses B. and M., 12, Chantrey House, Eccleston Street, S.W. ...	1	1	0			
*Turner, Alfred M., Esq., 11, Carlyle Mansions, Cheyne Walk, S.W. ...	10	10	0			
Unna, Miss, 10, Phillimore Gardens, W. 8. ...	5	5	0			
Vollar, Mrs., 8, Washington House, Basil Street, S.W. ...				100	0	0
Wakefield, W. C., Esq. ...						
Wilson, Miss M. ...				5	0	0
Whigham, Miss E. ...	1	1	0			
Whitaker, Mrs. ...	1	1	0			
White, Allan V., Esq., 33, Nicholas Lane, E.C. ...	1	1	0			
Wilkins, Mrs. Philip, 14, Wilton Place, S.W. ...	1	1	0			
Wilson, Mrs. H. J. ...	1	1	0			
Wilson-Patten, Hon. Miss Elizabeth ...	1	1	0			
Wombwell, Mrs., The Firs, Newbury, Berks ...	2	2	0			
Wood, Mrs. J. B., Henley Hall, Ludlow ...	2	2	0			
Wallis, Miss G. (collected at a Garden Party) ...				3	7	0
Ware, Miss E. ...				0	5	0
Williamson, Rev. Kennedy (Congregational Collection, Emperor's Gate Presbyterian Church) ...				1	2	0
Williams, Rev. D. J. (Walham Green Welsh Presbyterian Church) ...				2	12	6
Willard, Miss M. L. ...				5	0	0
Wallis, The Misses, Grove Park Lodge, Chiswick ...				20	0	0
West Ham, County Borough of ...				0	15	0
Wright, A. G., Esq., Director, <i>The Church Family Newspaper</i> (Part of Collection for Princess Mary's Wedding Gift) ...				5	10	0
Wilson, The Misses ...				2	10	0
De Zoete & Gorton, Messrs. ...				5	5	0
TOTAL ...	£377	9	0	1892	6	1

LIST OF SUBSCRIPTIONS AND DONATIONS.  
ST. NICHOLAS HOSPITAL.

				Subs.			Dons.		
				£	s.	d.	£	s.	d.
Alexandra Day Collection	...	...	...				20	0	0
Anonymous (per Miss Money)	...	...	...				1	10	0
Batt-Mills, Mrs.	...	...	...	5	5	0			
Box for Donations at the Hospital	...	...	...				1	5	6
Buss, H. S., Esq.	...	...	...	1	1	0			
Greenhill, Miss	...	...	...				0	5	0
Hardcastle, C. R. H., Esq., and Mrs.	...	...	...	1	1	0			
Larkins, Mrs.	...	...	...	2	2	0			
Montefiore, Mrs. Sebag	...	...	...	2	2	0			
Money, Mrs. ...	...	...	...	0	5	0			
Morris, Mrs. Percy	...	...	...	3	3	0			
Terry, Mr. E.	...	...	...				3	0	0
Trimmer, Rev. H. E.	...	...	...	1	1	0			
Watson-Smith, Mrs. (In memory of Cobb Joan)	...	...	...				1	1	0
Willett H. T., Esq.	...	...	...	2	2	0			
TOTAL ...				<u>£18</u>	<u>2</u>	<u>0</u>	<u>27</u>	<u>1</u>	<u>6</u>

## ENTERTAINMENTS (Cheyne Hospital).

Cary, Mrs. L.	...	Tea Party in memory of "Arminel's" Birthday.
James, Miss, and Party	...	Dancing.
Johnston, Mrs. A.	..	Conjurer and Tea.
Morris, Mrs. P.	... ..	Strawberry Tea to Upper Ward.
Pritchard, Mrs. L.	...	Tea to both Wards. Concert by Brownies.
Reiss, Mrs.	... ..	Tea Party and Bran Pie.
Wombwell, Mrs.	... ..	Tea Party and Concert.

## ENTERTAINMENTS (St. Nicholas Hospital).

1922.

MARCH	...	Concert in both Wards. By Members of Christ Church Choir, Westgate-on-Sea.
..	...	Magic Lantern to both Wards.
EMPIRE DAY	...	Tea Party in Garden.
JUNE	...	Strawberry Tea.
AUGUST	...	Mr. and Mr. Sidney Champion. Drive and Tea at The Elms, Sarre, to Convalescent Children, and Tea to Children in Wards.
NOVEMBER	...	Magic Lantern to both Wards.
DECEMBER	...	Upstreet Bell-Ringers.
..	...	St. Nicholas-at-Wade Bell-Ringers.
..	...	Tea and Christmas Tree. Upper Ward.
..	...	Tea and Christmas Tree and Concert. Lower Ward.
..	...	L. F. Harrison, Esq. Tea and Conjuring Entertainment.

## ACKNOWLEDGMENTS.

The Committee most gratefully acknowledge the various kind presents of Game, Clothing, Plants in pots, Flowers, Fruit, Pictures, Books, Toys, etc., received from many friends during the year; and it is hoped that any accidental omissions or inaccuracies in the following lists may be excused.

Gifts, etc., have been received from the undermentioned :—  
AT CHEYNE HOSPITAL.

From Flower Services and Harvest Festivals.

- Chelsea Old Church.  
Dallington Rectory.  
Edith Grove Congregational Church.  
Emperor's Gate Presbyterian Church, per Rev. Kennedy Williamson, M.A., and £1 2s. Collection.  
Gresmont Parish Church, per Rev. A. Pope.  
Holy Trinity Church, Sloane Square.  
Markham Square Congregational Church.  
St. Luke's Church, Chelsea.  
St. Luke's Infant Sunday School, per M. Murray, Esq., and 7s. 11d. Collection.  
St. Michael's, Chester Square, per Canon Mitchell.  
St. Peter's Church, Cranley Gardens.

Gifts of Money for Special Purposes.

	£	s.	d.
Beer, Mrs. G.	1	0	0
Cary, Mrs. L.	5	0	0
Clifford, Mrs.	2	2	0
Harrison, L. F., Esq.	5	0	0
Lorraine, Lady	1	0	0
Lucas, Mrs. H.	6	6	0
Marryatt, Mrs., and Friends, Collection at Musical Evening	4	0	0
Reiss, Mrs.	5	0	0
Peirse-Duncombe, Miss	1	0	0
Smith, Mrs. L.	1	10	0
Turner, A. M., Esq.	5	0	0
West, H. E., Esq.	5	5	0
Wombwell, Mrs.	1	10	0

## Gifts in Kind.

Her Majesty Queen Alexandra. Chocolates, Oranges.

- |                                    |                                      |
|------------------------------------|--------------------------------------|
| Barnes, Mrs.                       | Insole, A., Esq.                     |
| Bendix, Mrs.                       | James, Miss                          |
| Beringer, The Misses Esmé and Vera | Jonas, H., Esq.                      |
| Birkwruth, Miss Helen              | Kaye, Mrs. H.                        |
| Blunt, R., Esq.                    | Kaye, Miss Marion                    |
| Braund, Mrs.                       | Kemp-Welch, Mrs. J.                  |
| Bullivant, Mrs. E.                 | Kilgour, Miss Helen                  |
| Cary, Mrs.                         | Lawson, Rev. V.                      |
| Cheyne Laundry, The Workers of     | Lea, Miss Elsie                      |
| Churchwardens, The, Credenhill     | Legg, Mrs.                           |
| Clifford, Mrs.                     | Lewin, H., Esq.                      |
| Coates, Capt. John                 | Lewin, Mrs. Charles                  |
| Coles, Miss A.                     | London Hippodrome, The Manage-       |
| Cooper, Major                      | Lorraine, Lady [ment                 |
| de la Condamine, Mrs. R. C.        | Lumley, Mrs. C. Hope                 |
| Costeker, Miss                     | Marshall, Mrs.                       |
| Crawshay, Miss                     | Mason, Mrs. Louis                    |
| Cromer, The Rt. Hon. the Earl of,  | Mellish, The Misses                  |
| G.C.I.E., C.V.O.                   | Michell, Mrs. B.                     |
| Cromer, The Countess of            | Middleton, Miss D.                   |
| Cuncliffe, Miss                    | Morgan, Mrs. Vaughan-                |
| Davenport, Miss                    | Morris, Mrs. Percy                   |
| De Tessièr, Mrs.                   | Northen, Miss B. H.                  |
| Disturnal, Mrs.                    | de Paravicini, Lady Eva              |
| Dixon, Mrs. Stephen                | Parker, Mrs. E.                      |
| Drury Lane Theatre, The Manage-    | Pappel, Mrs.                         |
| ment                               | Peek, Miss F.                        |
| Elias, Miss D.                     | Peirse-Duncombe, Miss                |
| Emmanuel, Mrs.                     | Peirse-Duncombe, Miss E. S.          |
| Farrar, Lady                       | Petro, Mrs. A.                       |
| FitzClarence, Mrs.                 | Playfair, Miss L.                    |
| Fisher, Mrs. Buckley               | Playhouse, The, The Management       |
| Fripp, Mrs. A. Innes               | Pope, Rev. A.                        |
| Fullarton, Miss                    | Price, Mrs. Montague                 |
| Garratt, G. T., Esq.               | Probert, J., Esq., and friends       |
| Gandarillas, Madame                | Rauthmell, Mrs. H. A.                |
| Giles, Miss                        | Reiss, Mrs.                          |
| Gill, Mrs.                         | Ridley, Mrs.                         |
| Glass, Madame                      | Rodwell, Mrs.                        |
| Glendower School                   | Roller, Mrs.                         |
| Gosling, Miss                      | Roberts, Miss                        |
| Goodchild, Mrs.                    | Royalty Theatre, The Management      |
| Graham, Mrs. Arthur                | St. Peter's Church, Cranley Gardens, |
| Grimwade, L., Esq.                 | per Rev. C. S. Woodward              |
| Hale, Mrs. B.                      | Samuel, Mrs. Sylvester               |
| Hall, Lieut.-Col. Clifford         | Scientific Press, Ltd., The          |
| Harden, Miss D.                    | Shopper, Mrs.                        |
| Harrison, Rev. E. C.               | Simond, Misses M. and K.             |
| Harrison, L. F., Esq.              | Sidey, Mrs. C. Lyon                  |
| Hayward, Miss Joanne               | Slowburn, In memory of the late      |
| Henderson, Mr. and Mrs. A. G.      | Space, Miss [Mrs. H.                 |
| Hicks, Mrs.                        |                                      |
| Holman, Mrs. Richard               |                                      |

## Cheyne Hospital (Gifts in Kind)—(continued).

Spring-Rice, The Misses.	Vivian-Smith, Miss
Stuart of Wortley, Lady	Wallis, F. H., Esq.
Stuart, Miss Muriel	Watkin-Williams, Mrs.
Sutton, The Misses M. and E.	Ware, Miss
Thyme, Miss Annes	White, Miss May
Taylor-Restell, Mrs.	White, Mrs. James
Tucker, Mrs. R. S.	Williams, Mrs. A.
Unna, Miss	Wombell, Mrs. E.

## ST. NICHOLAS HOSPITAL.

## Gifts in Kind.

YEAR ENDING DECEMBER 31st, 1922.

Arnold, Miss	Laurie, Miss N.
Barnes, Miss	Laurie, Miss H.
Batt-Mills, Mrs.	Laurie, Mrs. R. M.
Beck, L. Coker, Esq.	Lees, Mrs. Geoffrey
Bearman, Mr. and Mrs.	Marsh, Mrs.
Bennett, Mr.	Martin, Mrs.
Biddulph, Mrs.	Moore, Miss
Blakeway, Mrs.	Murphy, Mrs.
Broadley, Mrs. W.	Money, Miss
Bruce, Miss	Nicholls, Mrs.
Brockman, The Misses M. and L.	Nutting, Mr.
Brice, The Misses Joan, and Phyllis and Derrick	Packham, Mrs. A.
Brooks, Miss Lake	Packham, Bros.
Brunton, Mrs.	Parker, Miss C. R.
Brunton, Dr. and Mrs.	Penn, Miss
Buss, Mrs.	Playfair, Miss
Carson, Lady	Peirse-Duncombe, Miss
Chapman, Colonel and Mrs.	Pemberton, Mrs.
Chapman, Mrs.	Powell-Cotton, Mrs.
Champion, Mr. and Mrs. S.	Prescott-Westcar, Mrs.
Champion, Mrs. P.	Quested, Mrs.
Colgrove, Mrs.	Reiss, Miss Mollie
Craig, Mrs. Tudor	Sayers, Mr. A.
Colthup, Mrs. W.	Shersby, The Misses
Cummings, Mrs.	Simes, Miss
Denny, Miss	Smith, T., Esq.
Dillon, Mrs.	Smith, W., Esq.
Fellows, Mrs.	Smith, Mrs.
Hardy, The Lady Katherine	Smith, A., Esq.
Hardy, Miss B.	Spooner, Mr.
Harrison, L. F., Esq.	Terry, Mr. and Mrs.
Heath, Miss A.	Trice, Mrs.
Hilton, Miss	Trimmer, Rev. H. E.
Holland, Mrs. E. L.	Toynbee, Mrs.
Holladay, Mrs.	Turner, Mrs. C.
Howlett, Mrs.	Walker, Mrs. W.
Johnson, Major Hilton-	Webster, Mr. and Mrs. P.
Johnson, Miss Hilton-	White, Mrs.
Knight, Miss	Williams, Mr.
King, Mr. and Mrs.	Willett, Mr. and Mrs. H. T.
	Worthington, Mrs.

## St. Nicholas Hospital (Gifts in Kind)—(continued).

Patients at The Hall, Jewish Convalescent Home. Matron of The Hall, Jewish Convalescent Home. Members of Christ Church Choir, Westgate. St. Nicholas-at-Wade Sunday School,	St. Nicholas-at-Wade Church Harvest Festival Chilham Church Harvest Festival, per Rev. Pemberton. Monkton Church, per the Rev. F. F. Brackenbury.
--	---

## Gifts of Money for Special Purposes.

	£	s.	d.		£	s.	d.
Patients at Jewish Convalescent Home ...	0	10	0	Per Mrs. Brunton :—			
Beck, L. Coker, Esq.	1	5	0	Bearman, Mrs.	-	0	10
Harrison, L. F., Esq.	5	0	0	Brunton, Mrs.	-	1	1
Hilton-Johnson, Major	1	0	0	Cossey, Mrs. W.	-	1	0
Terry, Mrs.	0	10	0	Gower, Rev. F. E. L.	0	5	0
Smith, T., Esq.	2	0	0	Greenwood, Miss	-	2	2
				Jeston, Denys	-	1	0
				Ponsonby, Mrs.	-	0	10
						6	

## THE "ST. NICHOLAS COT" LEAGUE.

*Committee*: Miss Penn (Chairman), Mrs. Blakeway, Mrs. S. Champion, Mrs. Murphy, Miss Money, Miss Ramsay, Mrs. Reid, Mrs. Willett, Mrs. W. White and Miss Laurie (Hon. Sec.).

The total amount collected in the year 1922 by the St. Nicholas Cot League amounts to £100 15s. 4d. Included in this amount is a sum of £51 13s. 4d. raised by Mrs. Fellows at a very successful Whist Drive. The Committee beg to express their most grateful thanks for this very welcome kindness.

Mr. L. Ramsay has also earned the gratitude of the Committee by again contributing £50 for the maintenance of the "St. Augustine Cot."

The children in the three Cots supported by the League are all reported as doing well.

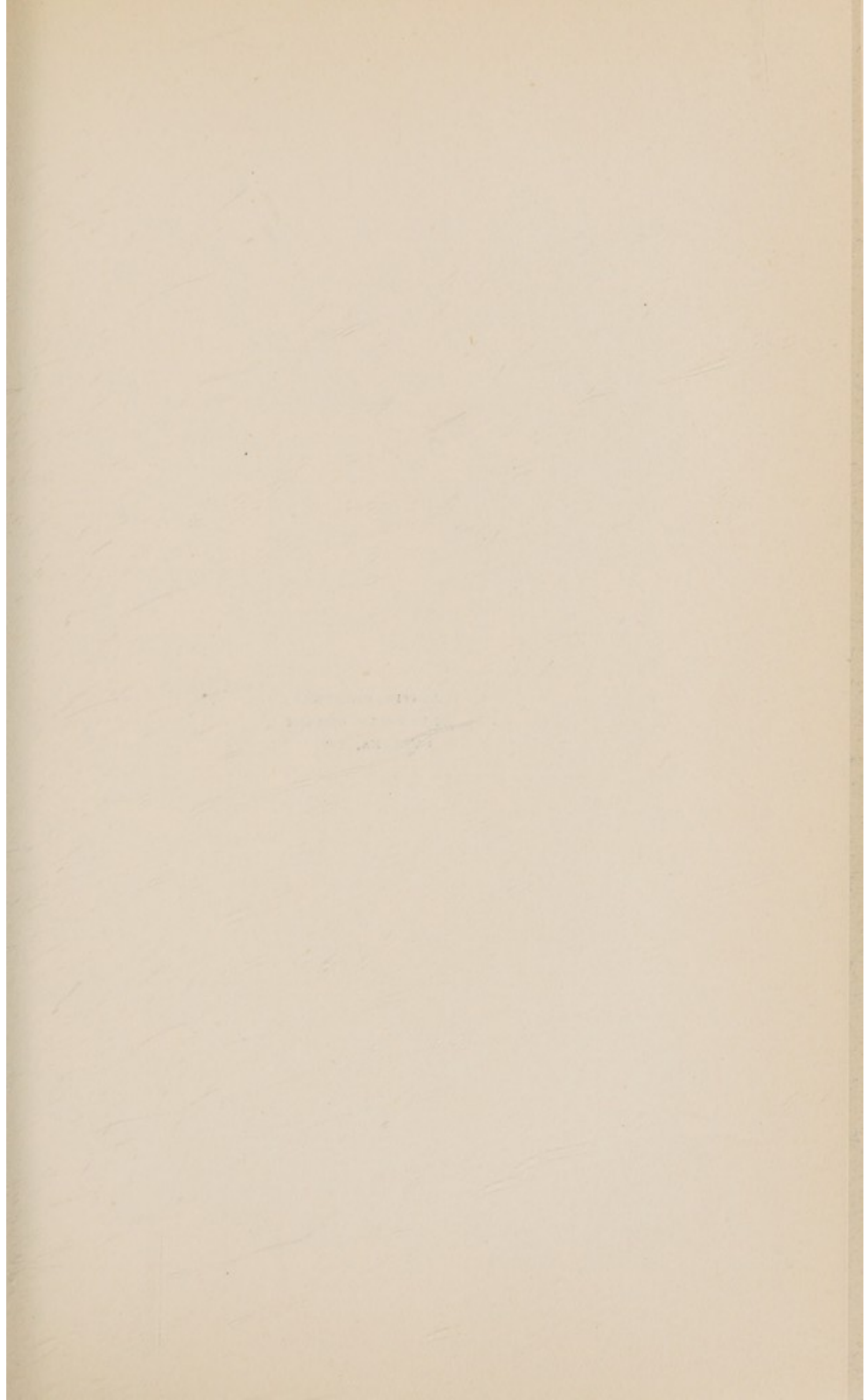
Two children have been provided with "after-care" treatment at a Convalescent Home out of the funds of the Cot League. The Matron of St. Nicholas Hospital wishes to bring this branch of the work especially before the notice of benefactors, and hopes it will receive every encouragement.

The following contributions have been received during the year :—

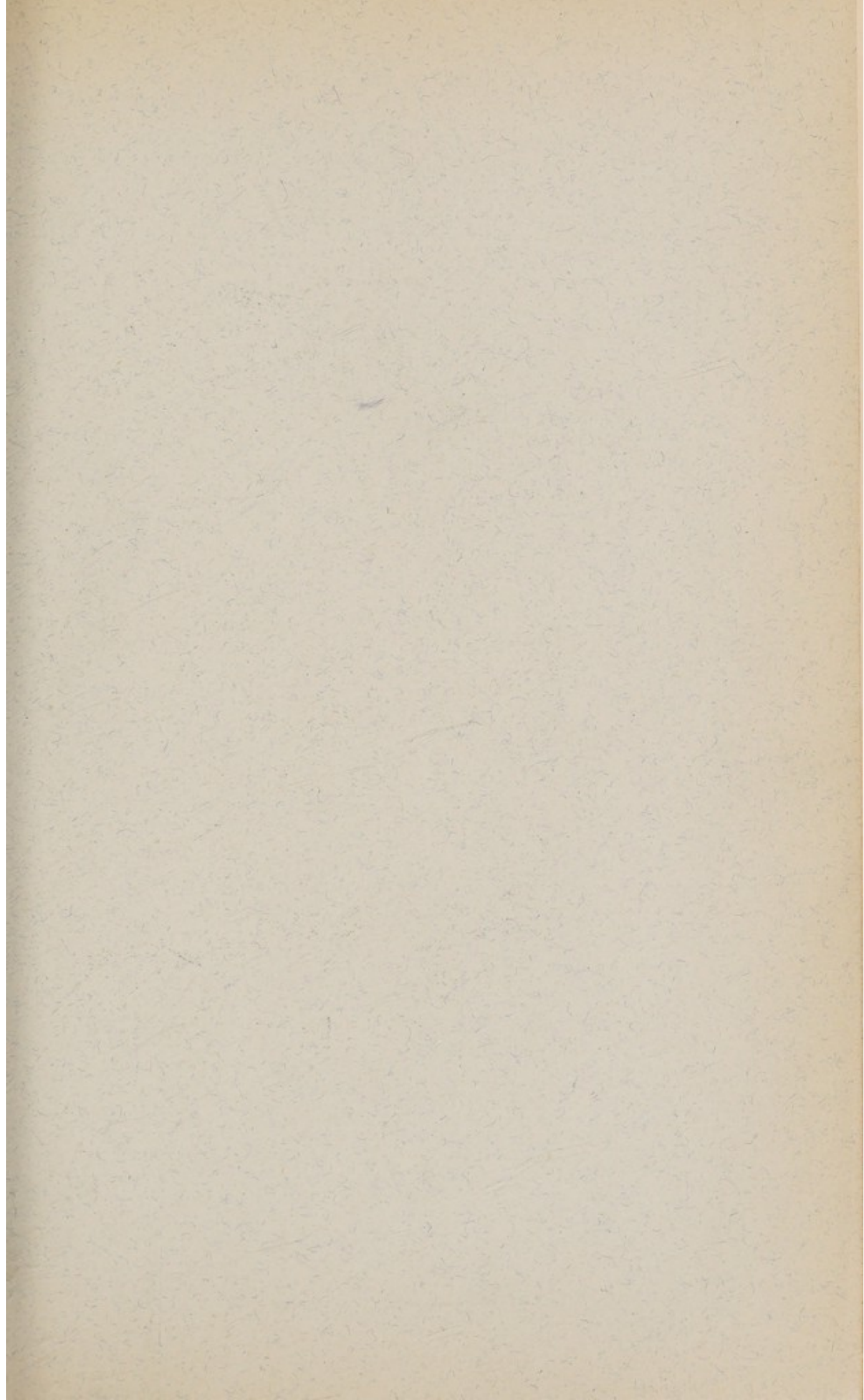
	£	s.	d.		£	s.	d.
Anderson, Mrs. G. K.	1	1	0	Brought forward	-	47	8
Blore, Mrs.	0	10	0	White, Mrs., for Ronald			
Payments, per H. Billingshurst, Esq., for "after-care" of Sybil Corish	4	17	6	Gamble	-	0	12
Ramsay, E. L., Esq.	40	0	0	Whist Drive, per Mrs. Fellows	-	51	13
Spencer-Mount, Mrs.	1	0	0	Williamson, Mrs.	-	1	1
						4	
Carried forward	£47	8	6		£100	15	4







AUSTIN, PRINTER.  
82 ELYSTAN STREET  
CHELSEA, S.W.





THE  
LITTLE HOSPITAL  
BY  
THE RIVER