

## **Annual report : 1920 / Cheyne Hospital for Children.**

### **Contributors**

London (England). Cheyne Hospital for Children

### **Publication/Creation**

London : [Cheyne Hospital for Children], 1920

### **Persistent URL**

<https://wellcomecollection.org/works/jfze9syf>

### **License and attribution**

This work has been identified as being free of known restrictions under copyright law, including all related and neighbouring rights and is being made available under the Creative Commons, Public Domain Mark.

You can copy, modify, distribute and perform the work, even for commercial purposes, without asking permission.



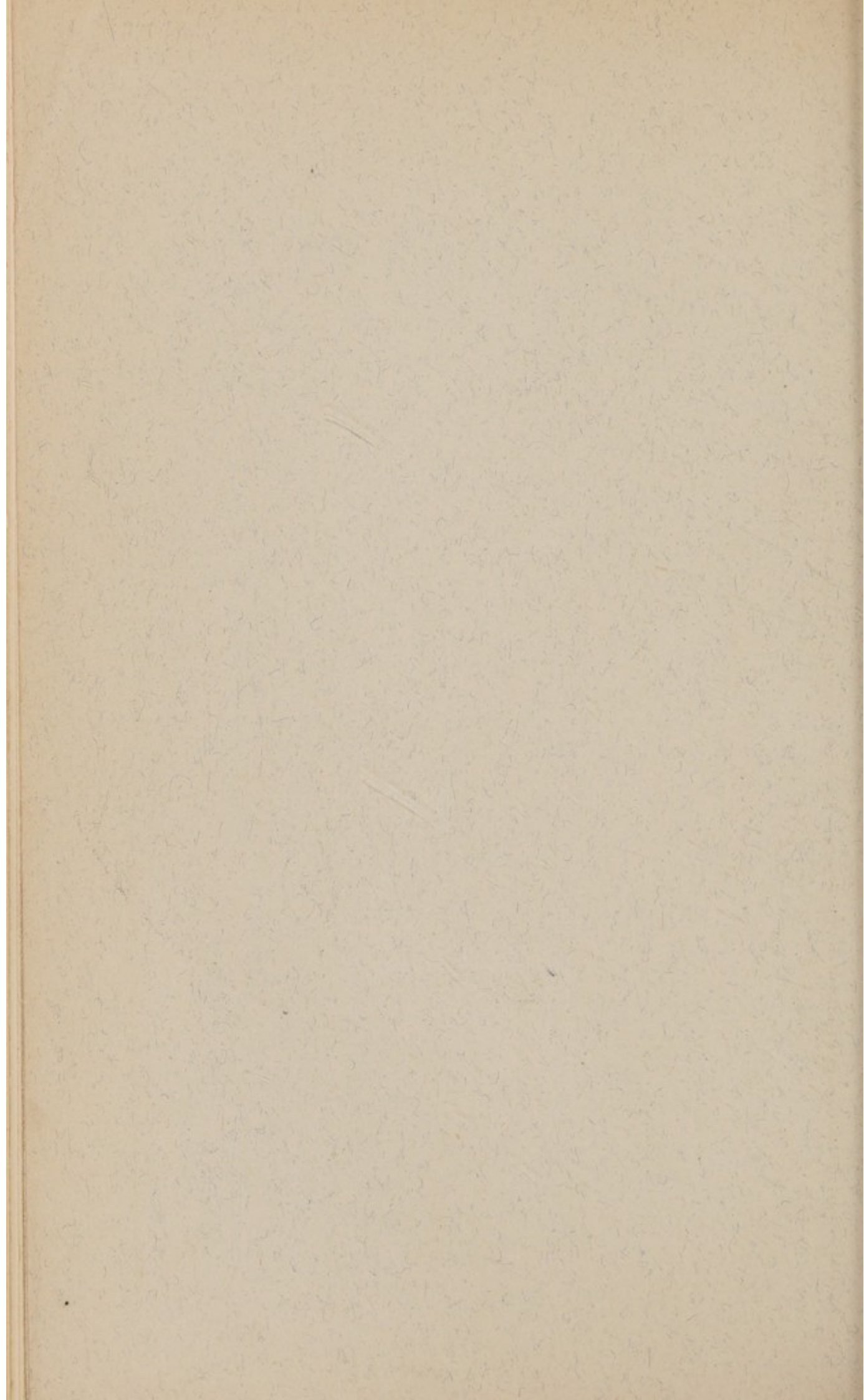
Wellcome Collection  
183 Euston Road  
London NW1 2BE UK  
T +44 (0)20 7611 8722  
E [library@wellcomecollection.org](mailto:library@wellcomecollection.org)  
<https://wellcomecollection.org>



CHEYNE  
HOSPITAL

120  
21.





small amount of trouble, risk, and postage. When filled in, it should be returned to the Secretary, at the Hospital. Acknowledgments of payments received through Bankers are duly sent to the Subscribers.]

## BANK ORDER.

192

To ....., Bankers.

Address of Bank or Branch, .....

**Please pay** on my account to PARR'S BANK, LIMITED, CHELSEA  
BRANCH, Sloane Square, S.W., to the Credit of THE CHEYNE HOSPITAL FOR  
CHILDREN, Cheyne Walk, Chelsea, S.W., the sum of

.....  
*and continue to make the same payment yearly, on the above date, until further notice.*

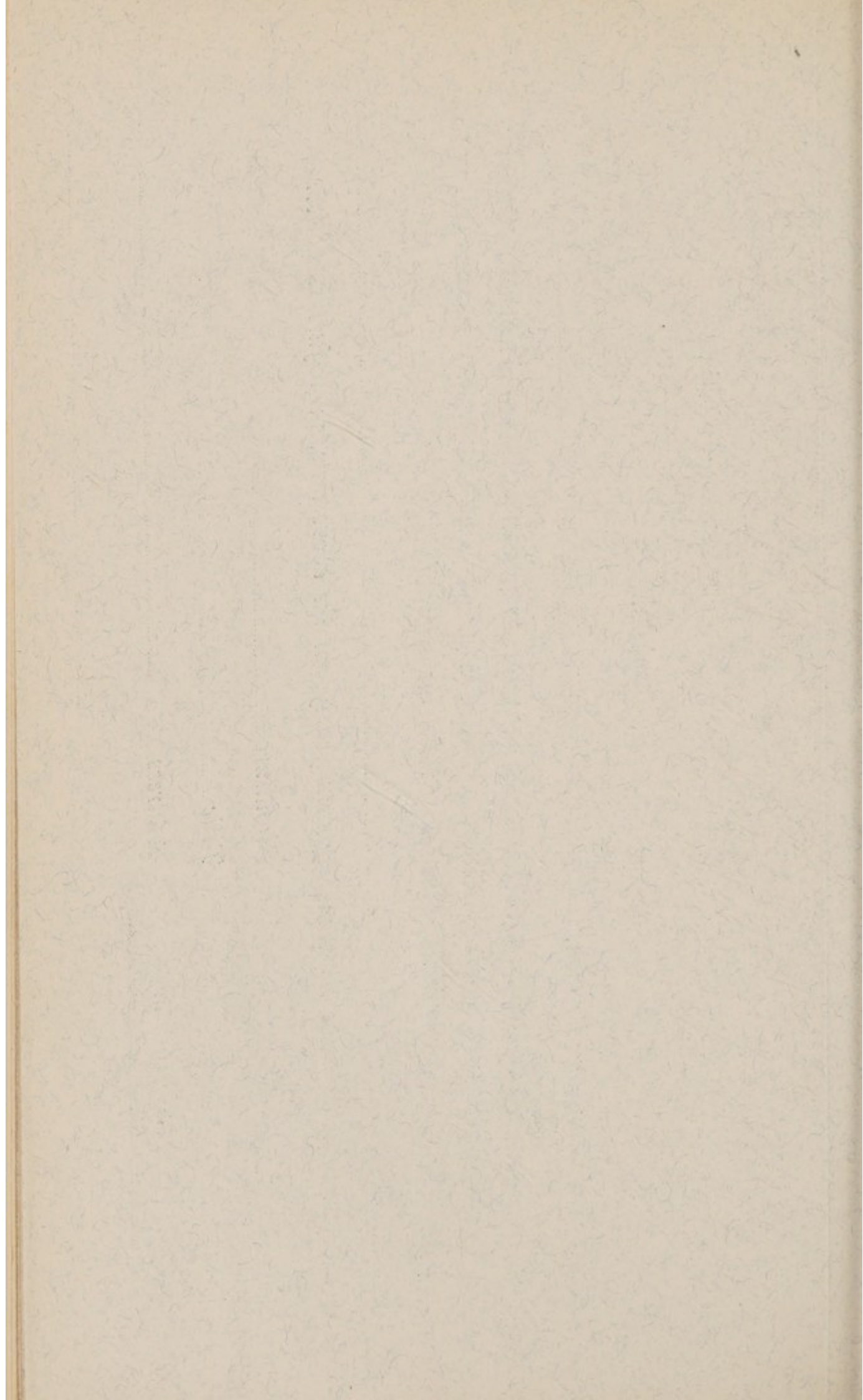
Signature .....

Title .....

Address .....

£ : :  
\_\_\_\_\_





THE FORTY-FIFTH  
ANNUAL REPORT OF THE  
CHEYNE HOSPITAL FOR  
CHILDREN,

for the Year ending the 31st of  
December, 1920.

President :

HER MAJESTY QUEEN ALEXANDRA.

Vice-Presidents :

The Rt. Hon. The EARL OF CROMER, M.V.O.

Chairman :

Lt.-Col. E. M. WILSON, C.B., C.M.G., D.S.O.

Treasurer :

LEONARD F. HARRISON, Esq.

Secretary :

HENRY KEMP-WELCH.

CHEYNE WALK, CHELSEA.



PRESIDENT :

HER MAJESTY QUEEN ALEXANDRA.

VICE-PRESIDENTS :

THE RT. HONBLE. THE EARL OF CROMER, M.V.O.

TRUSTEES :

LEONARD F. HARRISON, Esq.  
LORD JUSTICE THE RT. HON. LORD STERNDALE OF KING  
STERNDALE, P.C.  
HON. FRANK TREVOR BIGHAM, C.B.  
REGINALD WARD POOLE, Esq.

TREASURER :

LEONARD F. HARRISON, Esq.

COMMITTEE OF MANAGEMENT :

LT.-COL. E. M. WILSON, C.B., C.M.G., D.S.O., *Chairman.*  
LEONARD F. HARRISON, Esq., *Vice-Chairman.*  
MRS. LIONEL BANON,  
J. PRIME BARTLETT, Esq., M.R.C.S.  
HON. FRANK TREVOR BIGHAM, C.B.  
REGINALD BLUNT, Esq.  
SIR JOHN ROSE BRADFORD, K.C.M.G., M.D., F.R.S.  
MRS. GEIGER.  
THE DOWAGER LADY MONKSWELL.  
Miss PEIRSE-DUNCOMBE.  
MRS. PERCY MORRIS.  
HUGH MOSTYN PRITCHARD, Esq.  
REGINALD WARD POOLE, Esq.  
MRS. C. LYON SIDEY.  
LORD JUSTICE THE RT. HON. LORD STERNDALE, P.C.  
ALFRED M. TURNER, Esq.  
G. E. O. WILLIAMS, Esq., F.R.C.S.

HON. CHAPLAINS :

THE STAFF OF ST. LUKE'S, CHELSEA.  
REV. H. E. TRIMMER, ST. NICHOLAS.

SECRETARY :

HENRY KEMP-WELCH.

MATRON, CHEYNE HOSPITAL:

Miss L. ANGUS.

MATRON, ST. NICHOLAS HOSPITAL:

Miss A. C. MacL. MONEY.

AUDITORS:

MESSRS. BALL, BAKER, CORNISH & Co.,  
Chartered Accountants, Finsbury Court, E.C.

BANKERS:

LONDON COUNTY, WESTMINSTER & PARR'S BANK, LTD.,  
14, Sloane Square, S.W.

MEDICAL STAFF:

**CHEYNE HOSPITAL.**

CONSULTING PHYSICIAN:

SIR JOHN ROSE BRADFORD, K.C.M.G., M.D., F.R.S.

CONSULTING SURGEON:

RAYMOND JOHNSON, M.B., F.R.C.S.

SURGEONS:

J. PRIME BARTLETT, M.R.C.S.      G. E. O. WILLIAMS, F.R.C.S.

DENTAL SURGEON:

T. VERNON, L.D.S.

ANÆSTHETIST:

DR. ELLA E. BRISCOE-OWEN.

X-RAY OPERATOR:

G. HARRISON ORTON, M.A.,  
M.R.C.S., &c.

DISPENSER:

Miss WHEELER, P.C.H.

OPHTHALMIC SURGEON:

PERCY FLEMMING, M.B., F.R.C.S.

**ST. NICHOLAS HOSPITAL.**

SURGEON:

WALTER REYNER BRUNTON, M.B., M.R.C.S., L.R.C.P., D.P.H.

CONSULTING SURGEON:

WM. GREENWOOD SUTCLIFFE, F.R.C.S., M.R.C.S., L.R.C.P.

DENTAL SURGEON:

PERCY LAWRENCE WEBSTER, M.R.C.S., L.R.C.P., L.D.S., &c.



## PRIVILEGES OF DONORS AND SUBSCRIBERS.

1—Donors of not less than Fifty Guineas (£52 10s.) in one sum and Annual Subscribers of Ten Guineas (£10 10s.) and upwards (during the continuance of such subscription) are thereby constituted Governors, and are entitled to attend and vote at the Annual Meeting of the Committee of Management, and to nominate one suitable case for admission annually, such cases having precedence on the list over those recommended by other Subscribers.

2—All Annual Subscribers of One Guinea and upwards are entitled to recommend one suitable case annually, during the continuance of such subscription; such cases taking precedence on the Admission List over those not so recommended.

## EXECUTORS.

One of the Executors of every person from whose estate a Legacy of Fifty Guineas or upwards shall have been received by the Hospital, shall be entitled to the same privileges as a Donor of Fifty Guineas.

## LIFE COT ENDOWMENTS.

1—A Donation in one sum of Three Hundred Pounds (£300) endows a Free Cot for the period of the life of the Donor, who is entitled to name it and to nominate eligible patients thereto as vacancies shall arise therein.

2—A Donation in one sum of Two Hundred and Fifty Pounds (£250) endows a Half-Payment Cot for the period of the life of the Donor, who is entitled to name it and to nominate eligible patients thereto as vacancies shall arise therein.

Life Cot Endowments, ceasing upon the death of a Donor, may be converted into Permanent Cot Endowments by the Payment within twelve months of the death of the Donor, either by Bequest or otherwise, of the further sum of Seven Hundred Pounds in the case of a Free Life Cot Endowment, or of Five Hundred Pounds in the case of a Half-Payment Life Cot Endowment, free of Legacy Duty.

## COT SUBSCRIBERS.

1—An Annual Cot Subscription of Forty Pounds (or a Donation in one sum of One Thousand Pounds), entitles the Subscriber to name a Free Cot, and to nominate an eligible patient as often as the Cot becomes vacant; no further payment being required on behalf of the occupant.

2—An Annual Cot Subscription of Thirty Pounds (or a Donation in one sum of Seven Hundred and Fifty Pounds), entitles the Subscriber to name a Half-Payment Cot, and to nominate an eligible Patient as often as the Cot becomes vacant; the weekly payment of three shillings and sixpence being required from the parents or friends of the occupant.

3—A Donor of £250 in one sum is entitled to *name* a Cot in perpetuity, but without the right to nominate the occupants thereof.



## RULES FOR THE ADMISSION OF PATIENTS.

---

1—Such cases only are eligible for admission as have been rejected or discharged from a General Hospital, or can be shown to be unfit for treatment in such Hospitals.

2—Cases of Cancer, Consumption, Epilepsy, Ricketts, Hydrocephalus, Mental Derangement or deficiency, all infectious cases, and Cripples not requiring Surgical Treatment, are not eligible. Pauper Children (that is, Children to be paid for, either wholly or in part, by the Guardians, directly or indirectly) are also inadmissible.

3—Children are admitted only between three and twelve years of age, those recommended by Governors and Subscribers taking precedence. Patients are not retained after the age of sixteen.

4—The payment of Seven Shillings a week is required from the Parents or Friends of the Patients.

5—No case will be put upon the List for Admission till Forms of Medical Certificate and Guarantee (to be obtained of the Secretary) have been duly filled in and signed by a qualified Medical Practitioner and responsible Guarantor respectively, and returned to the Secretary of the Hospital.

6—The Committee reserve power to refuse the name of any Guarantor without reason assigned, or to require a Guarantor to furnish references for the necessary security to their satisfaction.

7—No Guarantee shall be withdrawn without one month's previous notice in writing to the Secretary of the Hospital.

8—Applicants for admission, unless the Doctor shall certify to the contrary, may be required to be brought to the Hospital for Medical examination before they can be admitted.

9.—Any Child who has been admitted to the Hospital, but who subsequently proves unsuitable from any cause, may be discharged upon three days' notice, sent by post to the last furnished address of the parent or guardian. The expenses of removal must be in all cases defrayed by the parents or friends of the child.

10—A certificate that the patient has not been suffering from any infectious disease, nor been exposed to infection, *must* be signed by a responsible person, cognisant of the facts, and be *brought with the child*.

11.—Any alteration in the address of the patient while awaiting admission should be at once notified to the Secretary.

---

\* Certain Free and Assisted Cots have been founded for specially necessitous cases. Applications for vacancies in these must be accompanied by full particulars of the circumstances of the family; and it must be borne in mind that the Committee only occasionally have these Cots at their disposal.

† The Guarantor should be a householder (or the wife of a householder) rated at £40 or more per annum. Unless the parents make regular weekly payments at the Hospital, the Guarantor is requested to arrange to receive their contributions and remit the maintenance charge quarterly.



## METHODS OF HELP.

## GIFTS IN MONEY.

- £1,000 endows a named Free Cot in perpetuity.  
 £750 endows a half-payment Cot in perpetuity.  
 £300 endows a named Free Cot for the Donor's life.  
 £250 endows a half-payment Cot for the Donor's life.  
 £250, in one payment, entitles the Donor to name a Cot in perpetuity.  
 £52 10s. Donation constitutes a Life Governor.  
 £40 Annual Subscription supports a named Free Cot.  
 £30 Annual Subscription supports a half-payment Cot.  
 £10 10s. Annual Subscription gives a Governor's preferential nomination.

Smaller Subscriptions or Donations are much valued and gratefully acknowledged.

## GIFTS IN KIND.

The following articles are specially needed:—

At Cheyne Hospital—Vests (knitted by hand), Nightgowns (white flannelette or cotton), Red Twill Jackets (all sizes), Frocks (3 to 12 years), Pinafores and Bed Socks, also Cast-off Clothing (all sizes), Boots and Shoes for those children who are not always in bed.

At St. Nicholas Hospital—Cast-off Clothing, Boys' Jerseys, Red Twill Jackets, Flannel or Cotton Nightgowns, Long Sleeve Vests and Holland Overalls.

Game, Rabbits, Fresh Fruit and Eggs, New (unbroken) Toys, Jellies, etc., are much appreciated.

Patterns of clothing will gladly be sent from either Hospital to anyone who will kindly supply the articles required.

## THE CHEYNE GUILD.

---

THIS GUILD has been established to provide clothes for the children in the Cheyne Hospital.

50 Beds: Boys and Girls, 3 to 16.

The Guild to consist of 20 Members who will each collect 10 articles of clothing and send them on the 1st June in each year to the Secretary of the Guild, Miss Peirse-Duncombe (of 65 Evelyn Gardens, S.W. 7) at the Cheyne Hospital, Cheyne Walk, Chelsea, S.W. 3.

During the year 1920 the Guild supplied 147 Garments to the Hospital, all of which were most acceptable.

It is hoped that 1921 will see the enrolment of the full number of Members suggested above. The articles mostly required are enumerated on page 6 under the heading "Gifts in Kind."

Any further particulars will be gladly supplied on application to the Secretary.

---

## NEEDLEWORK GUILD (St. Nicholas Hospital).

---

The Garments produced during the year numbered 235, and were all of excellent quality.

In view of the helpful work already carried out by the Guild, it is hoped that many other ladies will join as Vice-Presidents or Members. The names of any willing to do so will be gladly received by the Hon. Secretary of the Guild, Miss Hilda Laurie, of Westgate House, Canterbury, from whom all particulars of requirements and patterns can be obtained or at St. Nicholas Hospital, near Birchington, Kent.



MEDICAL REPORT.

Summary of the nature of the cases treated at  
Cheyne Hospital.

	Treated.	Discharged Cured.	Discharged Relieved.	Died.	Transferred	Removed.	Remaining in Hospital.
Tuberculous Disease of Spine	17	2	1	1	3	—	10
Tuberculous Disease of Hip .	9	2	—	—	4	—	3
Tuberculous Disease of Knee	3	2	—	—	—	—	1
Tuberculous Peritonitis .	1	—	—	—	—	—	1
Infantile Paralysis . . .	16	—	3	—	2	—	11
Spastic Paralysis . . .	9	—	2	—	—	1	6
Heart Disease . . . . .	10	—	2	3	1	1	3
Rheumatoid Arthritis . . .	1	—	—	—	—	—	1
Rheumatoid Carditis . . .	5	—	—	1	—	—	4
Chronic Nephritis . . . . .	1	—	—	—	—	—	1
Chorea . . . . .	2	—	—	—	—	—	2
Osteomyelitis . . . . .	1	—	—	—	—	—	1
Kyphosis . . . . .	1	—	—	—	1	—	—
Anterior Polio Encephilitis .	1	—	—	—	—	—	1
Spinal Curvature . . . . .	2	—	—	—	—	—	2
Diplegia . . . . .	1	—	—	—	—	—	1
Still's Disease . . . . .	1	1	—	—	—	—	—
Bright's Disease . . . . .	1	1	—	—	—	—	—
Scoliosis . . . . .	1	1	—	—	—	—	—
Congenital Dislocation of Hip	1	1	—	—	—	—	—
Incipient Friedericks . . . .	1	1	—	—	—	—	—
Laparotomy Drainage . . . .	1	—	—	—	—	—	1
Chronic Pericarditis . . . . .	1	—	—	—	—	—	1
	87	11	8	5	11	2	50

## MEDICAL REPORT.

Summary of the nature of the cases treated at  
St. Nicholas Hospital.

	Treated.	Discharged Cured.	Discharged Relieved.	Died.	Transferred.	Remaining in Hospital.
Tuberculous Disease of Spine	15	4	4	2	2	3
Tuberculous Disease of Hip	16	1	—	1	—	14
Tuberculous Disease of Knee	1	—	—	—	—	1
Tuberculous Disease of Sacrum	1	—	1	—	—	—
Tuberculous Dactylitis . . .	1	1	—	—	—	—
Infantile Paralysis . . .	2	—	2	—	—	—
Spastic Paraplegia . . .	1	—	—	—	—	1
Osteo Myelitis . . . . .	2	—	—	—	—	2
Kyphosis . . . . .	1	—	—	—	—	1
Anæmia and Chorea . . .	1	—	—	—	—	1
Muscular Dystrophy . . .	1	—	—	—	—	1
Tubercular Disease of Orbital plate of Maxilla . . . . .	1	—	1	—	—	—
	43	6	8	3	2	24



SUMMARY OF FORTY-TWO & ONE-HALF YEARS'  
WORK COMPILED FROM THE MEDICAL REPORTS.

YEAR ENDING.	Number of Occupied Cots in the Hospitals.	No. of Fresh Cases ad- mitted during the year.	Total Number of Pa- tients under treatment during the year.	Patients removed as Unfit, or by Parents' desire.	Discharged Relieved.	Discharged Cured.	Died.	Remaining under the charge of the Hospital.	
1st July, 1873 to } 31st Dec., 1909 }	—	718	—	68	217	180	203	50	Cheyne.
„ 1910	76	53	103	—	8	17	3	75	{ Cheyne and St. Nicholas.
„ 1911	78	37	112	2	6	18	9	77	Do.
„ 1912	80	42	119	—	10	21	8	80	Do.
„ 1913	80	46	126	1	5	31	12	77	Do.
„ 1914	81	37	118	—	7	19	8	80	Do.
„ 1915	82	46	126	1	7	22	13	83	Do.
„ 1916	79	51	134	—	17	30	9	78	Do.
„ 1917	78	45	121	—	22	15	8	78	Do.
„ 1918	79	40	118	—	18	11	10	79	
„ 1919	79	59	138	1	30	24	6	77	
„ 1920	77	40	117	2	16	17	8	74	
TOTALS ...		1214		75	363	405	297		

RESULTS.

Total number of Patients received during last 42½ years	...	1214
Deduct—Patients removed by Parents or as Ineligible under Rules	75	
„ Remaining under Treatment Dec. 31, 1920	...	74
		— 149
Nett Number of Cases finally Treated	...	1065
Of which:—Number Discharged Relieved	...	363
„ „ Cured	...	405
„ who Died	...	297
		—1065

( Per Cent.  
} 72.11  
} 27.89

Forty-fifth Annual Report  
OF  
The Committee of Management  
OF  
Cheyne Hospital for Children,

For the Year ending December 31st, 1920.

THE Committee of Management have pleasure in presenting their Report, together with the Audited Accounts, for the year ending the 31st December, 1920.

**Work of the Year.—Cheyne Hospital.**

In Hospital, 1st January, 1920	50
New Patients Admitted	35
Transferred from St. Nicholas	2
	—87
Discharged Cured or Relieved	19
Died	5
Removed	2
Transferred to St. Nicholas	11
Remaining in Hospital, 31st December, 1920	50
	—87

**Cottage Homes.**

At Cottage Homes, 1st January, 1920	7
Sent there during the year	14
	—21
Discharged	18
Remaining, 31st December, 1920	3
	—21

**St. Nicholas Hospital.**

In Hospital, 1st January, 1920	27
New Patients Admitted	5
Transferred from Cheyne Hospital	11
	—43
Discharged Cured or Relieved	14
Died	3
Transferred to Cheyne Hospital	2
Remaining in Hospital, 31st December, 1920	24
	—43



Many of the patients have made good progress during the year under review, and, though the numbers discharged have not equalled those in 1919, they have been rather more than the average of the ten preceding years, as will be seen on reference to the table given on page 10.

With the exception of one case of Mumps at St. Nicholas, both Hospitals have been free from any infectious complaints,

### Change of Title.

Experience having shewn that the word "Incurable" in the Title of the Hospital has been prejudicial to its interests, it has been decided to change the name of the Hospital to "Cheyne Hospital for Children," by which it will be known in the future.

The Hospital has been too much looked upon as a Home for Incurables, whereas it really is a Hospital for the Surgical and Medical treatment of patients for whom there is but little hope of recovery unless sufficient time is given.

This the General Hospitals cannot do as they have a constant demand for the admission of urgent cases requiring immediate treatment, and therefore such an Institution as this is of the greatest value. Moreover, many parents have objected to send their children here, thinking that all those received are incurable.

The Committee take this opportunity of pointing out that the best chance of recovery is with those who are sent here as soon as it is found that they will require long treatment, as frequently the children suffer and become worse by attending as "out-patients" when they should be treated as "in-patients."

### Education.

The Board of Education Inspector has expressed approval of the work carried out in the Schools of both Hospitals.

The children have greatly benefited by the teaching they have received, and many have produced excellent specimens of hand work.

### Cots.

The "St. Augustine" Cot has been established at St. Nicholas by the St. Nicholas Cot League, as referred to on page 40.

The "Amy Fairfax" Cot, as intimated in last year's report has also been established.

It is greatly to be regretted that support of the "Evelyn" Cot has been withdrawn after many years continuance.

### Cottage Homes.

Owing to the restriction of available accommodation, it has not been possible to keep as many children at Cottage Homes as was done last year, but those sent there have greatly benefited by the change, and have mostly been discharged to their homes.

### Finance.

His Majesty The King has again graciously sent a gift of £5 as a Special Christmas Donation.

The Committee gratefully acknowledge the following contributions amongst others:—

	£	s.	d.
Alexandra Day Committee, <i>per</i> Miss Beeman - - - - -	30	0	0
Alexandra Day Committee, St. Nicholas, <i>per</i> Mrs. Harold Cobb -	19	0	0
King Edward's Hospital Fund for London - - - - -	350	0	0
Hospital Saturday Fund - - -	194	0	0
Metropolitan Hospital Sunday Fund -	275	0	0
The Worshipful Company of Dyers -	2	2	0
The Worshipful Company of Saddlers	5	5	0
Sir Harry Poland, K.C. - - -	50	0	0



### Legacies.

Legacies amounting to £1,753 2s. 6d. have been received. These have been most welcome, as they have enabled the Committee to meet the liabilities of the year without leaving a large adverse balance and without having to realize securities at the present low values.

### Receipts and Expenditure.

Unfortunately the cost of many articles, such as meat, eggs, milk, drugs, dressings, coal, etc., has been higher during the past year than ever before, so that the total expenses have again been unavoidably increased. It has also been necessary to incur considerable expense in cleaning the wards, isolation block, bedrooms, etc. Salaries and wages have also increased.

The ordinary expenditure of the Hospitals has exceeded the ordinary receipts by £2500, and this deficit has, as before stated, been only partially met by the Legacies received and by special efforts made by Sales of Work, etc., held at both Institutions, as referred to on pages 16 and 17.

The Committee look forward with great anxiety to the working of the present year. It is to be hoped that several articles of consumption will be reduced in price, but even if this be so, greatly increased help will be necessary if both Hospitals are to be kept open, and therefore all supporters are asked kindly to try to influence their friends to take an active interest in them.

There has again been a slight falling off in the Annual Subscriptions, but new Subscriptions have nearly balanced those lost.

### General.

Mrs. Percy Morris, who has taken great interest in the Hospital for many years, has kindly consented to join the Committee of Management.

There have been no changes in the Medical Staff during the year.

Three children were confirmed at St. Nicholas on the 21st April by the Bishop of Croydon.

The Rev. C. S. Woodward again kindly officiated at a Harvest Festival held at Cheyne Hospital in October; that at St. Nicholas was kindly taken by the Rev. H. E. Trimmer on the 21st September.

Owing to the great increase in all working expenses it has been necessary to raise the weekly charge for paying patients from 4s. to 7s., and this has been willingly met by all the parents and supporters of the children.

In view of the large rise in the earnings of most workers this increase has been generally looked upon as reasonable.

The Working Guilds have again rendered most valuable assistance, details of which are given on page 7.

The Committee tender their warmest thanks to all who have given help in any way, and especially to the Staff of St. Luke's Church, Chelsea, and to the Rev. H. E. Trimmer, of St. Nicholas, for their greatly appreciated services during the year.

They also cordially thank the Medical and Nursing Staffs for their skilful and patient work, which are continually producing splendid results.

### Committee.

The following members of the Committee of Management viz. :—H. M. Pritchard, Esq., Miss Peirse-Duncombe and Mrs. C. Lyon Sidey retire at the Annual Meeting in order of the seniority of their appointment, and are eligible for re-election.

*Signed on behalf of the Committee of Management,*

E. M. WILSON, Lt.-Col., *Chairman.*

L. F. HARRISON, *Treasurer.*



## CHEYNE HOSPITAL—SALE OF WORK, ETC.

---

A Sale of Work and other contributions was held at Cheyne Hospital on the 27th October, which was attended by a large number of friends and realised the substantial sum of £125 19s. 3d., after paying all expenses.

Stalls were provided and superintended by the following ladies :—

*Children's School Work*—THE TEACHERS.

*Fancy Work, Toys, etc.*—Mrs. GEIGER, Miss PEIRSE-DUNCOMBE and Mrs. PERCY MORRIS.

*Clothing, Fancy Work, etc.*—THE NURSING STAFF OF THE HOSPITAL.

*Fruit, Vegetables, Game and Fancy Articles*—Mrs. BANON and Mrs. LYON SIDEY.

*Flowers*—Mrs. H. KEMP-WELCH, Mrs. H. FOSTER and Mrs. CAUSTON.

The Sale was opened by the Countess of Cromer, who was accompanied by the Earl of Cromer, Vice-President of the Hospital. The Countess, who was introduced by Col. Wilson, C.B., Chairman of the Committee of Management, having, in a few well chosen words expressed her great pleasure in being able to be present, declared the Sale open, and visited the stalls, making many purchases.

Tea was served in the Hospital building by the Matron and Nurses.

The Sale was held in the Isolation Annexe, which had been most tastefully decorated by the Nursing Staff.

The sincere thanks of the Committee are tendered to all who helped to make the Sale so great a success; those who organised the stalls, those who so generously supplied articles, and specially to the nurses who worked so hard in making nearly everything displayed on their stall.

The work made by the children in the Hospital was greatly admired, and was considered to be most creditable to the Teachers, as showing what can be done in teaching even those who have very little power in their hands to acquire some occupation of which they may afterwards be able to make use.

## ST. NICHOLAS HOSPITAL GARDEN PARTY.

---

On the 17th July, in glorious summer weather, about 300 visitors from all round the neighbourhood, attended a Garden Party at St. Nicholas Hospital.

They were received by Lieut.-Colonel E. M. Wilson, C.B., &c., and Mrs. Geiger, on behalf of the Committee.

The special object of the gathering was to make the Hospital better known amongst the residents in and visitors to the neighbourhood, and to exhibit and dispose of the work which had been done by the children during the course of their lessons. These articles were much admired and met a ready sale. They were considered to be a great credit to the painstaking teaching which had been bestowed on the children.

Mrs. Hilton-Johnson, assisted by Mrs. Sidney Champion, and their friends provided a stall of needlework and fancy articles which proved most attractive.

Mrs. H. T. Willett contributed a splendid supply of produce, game and flowers which with the help of her friends she soon cleared out with most satisfactory results.

The pupils of Miss Barnes' School, Portpool, Birchington, performed a most delightful Pastoral Play on the lawn, which gave great pleasure to all who were present.

Music was provided by five members of the London Diocesan Orchestra, who most kindly came from London, giving their services gratuitously.

That their part in the afternoon's entertainment was much appreciated was proved by the expressions of pleasure made by many of the visitors.

Tea was served under the fine evergreen oaks on the lawn by ladies who had kindly volunteered their help.

The Committee are most sincerely grateful to all who so kindly helped to make the entertainment a success and they specially thank the Matron of the Hospital on whom the making of nearly all the arrangements devolved, and also Dr. and Mrs. Brunton who, as usual gave her very great assistance. The Entertainment resulted in the very satisfactory nett sum of £70 19s. 4d.



## THE CHEYNE HOSPITAL

Dr.	BALANCE SHEET,								
				£	s.	d.	£	s.	d.
I. TO SUNDRY CREDITORS	...	...	...				480	1	3
II. ,, LOANS TO HOSPITAL	...	..	...				<i>Nil</i>		
	Bank overdraft	...	...	...					
III. ,, CAPITAL ACCOUNTS—									
	(A) For Special Purposes, as at 1st Jan., 1920,								
	(a) Cot Endowments—								
	Free Cots—								
	“Every Girls’”	...	...	1,000	0	0			
	“George Horatio”	...	...	1,000	0	0			
	“Wordsworth”	...	...	1,000	0	0			
	“Mary Anna Harrison”	...	...	1,000	0	0			
	“Arminel Cary”	..	...	1,000	0	0			
	“Daniel Pidgeon”	...	...	1,000	0	0			
	“Katie Mackenzie Fairfax”	...	...	1,000	0	0			
	“Winifrid”	...	...	1,000	0	0			
	“The Children’s”	...	...	1,000	0	0			
	“Founder’s”	...	...	1,000	0	0			
	“Jean Marjorie Campbell”	...	...	1,000	0	0			
	“Anne Fairfax”	...	...	1,000	0	0			
	“Venetia Mexborough”	...	...	1,000	0	0			
	Half Payment Cots—								
	“Charles Kingsley”	...	...	753	16	0			
	“Violet”	...	...	750	0	0			
	Life Cots—Free—								
	“Sibell Evelyn”	...	...	300	0	0			
	“Christian Helena Gildea”	...	...	300	0	0			
	“R. H. Raphael”	...	...	500	0	0			
	Life Cots—Half Payment—								
	“Cranstoun Kerr”	..	...	250	0	0			
				15,853	16	0			
	Add—Received during the year								
	“Amy Fairfax”	...	...	1,000	0	0			
				16,853	16	0			
	“The Cranstoun Kerr” Cot Endowment Fund			304	10	10			
	* “The Founder’s Gift” as at								
	1st Jan., 1920	...	£31,612	5	1				
	Added since	...	1,361	6	10				
				32,973	11	11			
	* This Gift is subject to an Annuity of								
	£168 estimated at £2,000								
	(b) For other Special Purposes	...					<i>Nil</i>		
	Forward	...	£50,131	18	9		480	1	3

## FOR CHILDREN.

31st DECEMBER, 1920.

Cr.

	£	s.	d.	£	s.	d.
I. By CASH IN HAND.						
(a) Generally on account of the Hospital ...				269	15	8
II. ,, SUNDRY DEBTORS ... ..				860	1	9
III. ,, INVESTMENTS ON CAPITAL ACCOUNTS (as detailed on pages 30, 31 & 32.)						
(A) For Special Purposes.						
(a) Hospital Endowments (Schedule A)						
Cot Endowments ... ..	17,199	4	6			
" The Founder's Gift " In- vestments ... ..	£28,540	19	9			
" The Founder's Gift " Loan on account of St. Nicholas Hospital as at 31st December, 1919	£3,071	5	4			
Added since 1.361	1,361	6	10			
	4,432	12	2	32,973	11	11
				50,172	16	5
(b) Other Special Purposes						
(B) For Buildings and Equipment				<i>Nil</i>		
(C) For General Purposes (Schedule B) ...				8,163	7	10
				58,336	4	3

Forward ... £59,466 1 8



## CHEYNE HOSPITAL

Dr.	BALANCE SHEET,					
	£	s.	d.	£	s.	d.
To Amounts brought forward ...				50,131	18	9 480 1 3
III. ,, CAPITAL ACCOUNTS— <i>continued.</i>						
(B) For Buildings and Equipments—						
Site, Buildings and Equip-						
ment of 59, 60 and 61 Cheyne						
Walk and Lawrence Street						
Annexe ... ..	19,555	5	2			
62 Cheyne Walk as at 31st						
Dec., 1919 ... ..	2,773	1	8			
Part cost of St. Nicholas Hos-						
pital, as at 31st Dec., 1919						
£4,080 17 5						
<i>Less</i> Transfer to Capital.						
(C) For General						
Purposes 1,361 6 10						
—————				2,719	10	7
“The Founder’s Gift” Loan						
on account of St. Nicholas						
Hospital at 31st Dec., 1919						
£3,071 5 4						
Further ad-						
vance ... 1,361 6 10						
—————				4,432	12	2 29,480 9 7
						————— 79,612 8 4
(C) For General Purposes—						
Capital Account at 31st Dec.,						
1919 ... ..				7,085	11	1
Transfer from Capital (B) for						
Buildings and Equipment				1,361	6	10 8,446 17 11
						—————
IV. ,, UNEXPENDED INCOME BALANCES						
OF SPECIAL FUNDS—						
“Alicia Amé Samaritan Fund”						28 9 7
V. ,, INCOME AND EXPENDITURE						
ACCOUNT—						
Balance at 31st Dec., 1919				776	11	11
Deficiency for year ending						
31st Dec., 1920				372	13	6
						————— 403 18 5
						————— £88,971 15 6

*We have examined the foregoing Balance Sheet and the accompanying Statement We have satisfied ourselves that the Investments above-named are standing in the The Title Deeds relating to the Freehold of the Hospital Premises including with Cross Keys Yard, and “The Grange,” St. Nicholas-at-Wade, have been*

## FOR CHILDREN.

31st DECEMBER, 1920 (Continued).

Cr.

	£	s.	d.	£	s.	d.	£	s.	d.
By Amount brought forward ...							59,466	1	8
V. ,, LAND, BUILDINGS AND EQUIPMENT OF THE HOSPITAL.									
A. The Site, Buildings, Furniture, and Appli- cances of 59, 60 and 61 Cheyne Walk and Lawrence Street An- nexes. Expenditure prior to 1913 ...				19,555	5	2			
B. Buildings and Equip- ment of "The Grange," St. Nicholas-at-Wade, as at 31st December, 1919 ...				7,177	7	0			
C. The Building, &c., 62 Cheyne Walk as at 31st December, 1919 ...				2,773	1	8			
							<u>29,505</u>	13	10

---



---

 £88,971 15 6
 

---

*of Income and Expenditure with the Vouchers, and find the same to be correct.*  
*names of the Trustees of the Hospital.*

*Land and Buildings in Lawrence Street, Chelsea, Nos. 62 & 63, Cheyne Walk,*  
*produced to us.*

Finsbury Court,  
 Finsbury Pavement, E.C. 2.

BALL, BAKER, CORNISH & Co.,  
 Chartered Accountants.

February, 1921.



## Dr. INCOME AND EXPENDITURE ACCOUNT

		INCOME.					
A. ORDINARY.		£	s.	d.	£	s.	d.
I. ANNUAL SUBSCRIPTIONS (see page 48)					396	5	0
II. DONATIONS (see page 48) ... ..					197	6	10
Boxes ... ..							
III. KING EDWARD'S HOSPITAL FUND FOR LONDON ... ..					150	0	0
An Emergency Grant of £200 was also received: see Extra- ordinary Income below							
IV. HOSPITAL SUNDAY FUND ... ..					275	0	0
V. HOSPITAL SATURDAY FUND ... ..					194	0	0
VI. CONGREGATIONAL COLLECTIONS (apart from Hospital Sunday Fund)					7	2	10
VII. WORKMEN'S COLLECTIONS (apart from Hospital Saturday Fund) ... ..							
VIII. ENTERTAINMENTS ... ..					144	14	5
IX. INVESTED PROPERTY.							
Dividends:							
From "The Founder's Gift" 819 11 3							
Less Annuity Paid ... .. 168 0 0							
					651	11	3
From other Investments					492	3	9
					1,143	15	0
Rents ... ..					149	10	6
Income Tax Returned ... ..					380	6	2
Interest on Deposit or Current Account ... ..					21	2	3
					1,694	13	11
Less—Interest to Special Accounts.							
Samaritan Fund and "Cranstoun Kerr Cot" Endowment Fund					12	4	11
					1,682	9	0
Forward ... ..					3,046	18	1

## EXPENDITURE.

A. MAINTENANCE.	£	s.	d.	£	s.	d.	£	s.	d.
I. PROVISIONS.									
1. Meat ... ..	202	10	2						
2. Fish, Poultry, etc. ... ..	79	13	8						
3. Butter, Bacon, etc. ... ..	119	6	2						
4. Eggs ... ..	25	8	9						
5. Milk ... ..	413	4	3						
6. Bread, Flour, etc. ... ..	110	1	10						
7. Grocery ... ..	187	15	11						
8. Vegetables and Fruit ... ..	109	19	0						
9. Malt Liquors ... ..									
10. Aerated Waters and Ice ... ..	1	15	6						
							1,249	15	3
II. SURGERY AND DISPENSARY.									
1. Drugs, Chemicals, Disinfectants, etc.	136	19	8						
2. Dressings, Bandages, etc. ... ..	22	9	9						
3. Instruments and Appliances ... ..	36	7	2						
4. Wines and Spirits ... ..	8	18	6						
5. Sundries ... ..									
							204	15	1
III. DOMESTIC.									
1. Renewal & Repair of Furniture	148	15	8						
2. „ „ Bedding & Linen	89	2	4						
3. Renewal and Repairs of Hardware, Crockery, Brushes, etc.	40	2	0						
4. Washing done off Hospital premises ( <i>average weekly number of articles 1,094</i> ) ... ..	222	18	11						
5. Cleaning and Chandlery ... ..	55	14	8						
6. Water ... ..	11	14	0						
7. Fuel and Lighting—									
(a) Coal ... ..	195	13	5						
(b) Gas ... ..	96	3	5						
(c) Electric Current ... ..	71	11	11						
(d) Oil, Wood, etc. ... ..	1	16	7						
8. Uniforms (Nurses, Porters, etc.)	76	13	3						
9. Sundries ... ..	11	5	5						
							1,021	11	7
IV. ESTABLISHMENT.									
1. Insurance ... ..	24	19	9						
2. Renewals and Repairs ... ..	53	0	0						
3. Annual Cleaning ... ..	306	3	0						
4. Garden ... ..	0	14	4						
							384	17	1
V. SALARIES, WAGES, etc.									
1. Medical ... ..	128	17	6						
2. Dispensing ... ..	38	8	4						
3. Nursing ... ..	449	4	3						
4. Other Officers ... ..									
5. Mechanics, etc. ... ..									
6. Porters ... ..	125	13	6						
7. Domestic Servants ... ..	149	17	0						
8. Scrubbers ... ..	51	19	8						
9. Pensions ... ..	260	0	0						
							1,204	0	3
Forward							4,064	19	3



Dr.

## INCOME AND EXPENDITURE ACCOUNT

		INCOME.					
		£	s.	d.	£	s.	d.
To	Amount brought forward	...				3,046	18 1
X. NURSING INSTITUTION.							
	Private Nurses	...	...	...			
	Nurses' and Probationers' Fees	...					
XI. PATIENTS' PAYMENTS.							
	In-Patients	...	...	...		419	12 9
	Out-Patients	...	..	...			
XII. RECEIPTS UNDER THE NATIONAL INSURANCE ACT.							
XIII. OTHER RECEIPTS.							
	Cot Subscriptions (see page 46)...					220	0 0
	Total Ordinary Income	...				3,686	10 10
B. EXTRAORDINARY.							
I. LEGACIES.							
	Executors of the late						
	William Stanfield, Esq.					3	2 6
	Executors of the late						
	Sir James Innes, Bart.					1,750	0 0
						1,753	2 6
	II. GRANT FROM BOARD OF EDUCATION					666	10 0
III. KING EDWARD'S HOSPITAL FUND FOR LONDON.							
	Grant from Emergency Distribution,						
	July, 1920	...	...	...	...	200	0 0
	Total Extraordinary Receipts					2,619	12 6
	Total Receipts					6,306	3 4
	Balance, being excess of Total Expenditure						
	over Total Income	...		...		372	13 6

---



---

 £6,678 16 10

## EXPENDITURE.

	£	s.	d.	£	s.	d.	£	s.	d.	
Brought forward				4,064	19	3				
VI. MISCELLANEOUS.										
1. Printing and Stationery	...	4	7	7						
2. Postages	...	11	19	0						
3. Advertisements	...									
4. Sundries	...	20	3	7						
							36	10	2	
Total Cost of Maintenance							4,101	9	5	
B. ADMINISTRATION.										
I. MANAGEMENT.										
1. Official Salaries—proportion of £400	...	266	13	4						
2. Pensions	...									
3. Official Printing and Stationery	...	45	13	9						
4. Official Postage and Telegrams	...	16	6	6						
5. Official Advertisements	...	3	2	0						
6. Law Charges	...	2	13	8						
7. Auditors' Fees	...	7	7	0						
8. Sundries, Travelling, etc.	...	20	6	9						
							362	3	0	
II. FINANCE.										
1. Appeals	...									
2. Commission	...									
3. Festivals, Bazaars, etc.	...						18	15	2	
Total Cost of Administration							380	18	2	
Total Cost of Maintenance and Administration	...						4,482	7	7	
C. RENT, RATES AND TAXES.										
I. Rent	...									
II. Rates and Taxes	...						167	14	0	
Total Rent, Rates and Taxes							...	167	14	0
Total Ordinary Expenditure	...						4,650	1	7	
D. EXTRAORDINARY EXPENDITURE.										
I. Interest	...	13	13	2						
II. Contributions to other Institutions— Expenses of the Branch Hospital at St. Nicholas-at-Wade	...	1,541	12	8						
III. Festivals, Bazaars, etc., for new buildings or equipment, or the extinction of debt incurred for such purposes	...									
Festivals, etc., for Endowment or other Capital purposes	...									
IV. School Expenses	...	473	9	5						
Total Extraordinary Expenditure							2,028	15	3	
							£6,678	16	10	



		INCOME.					
A. ORDINARY.		£	s.	d.	£	s.	d.
I.	ANNUAL SUBSCRIPTIONS ... ..					9	14 0
II.	DONATIONS ... ..					28	4 3
	Boxes ... ..						
III.	KING EDWARD'S HOSPITAL FUND FOR LONDON ... ..						
IV.	HOSPITAL SUNDAY FUND ... ..						
V.	HOSPITAL SATURDAY FUND ... ..						
VI.	CONGREGATIONAL COLLECTIONS (apart from Hospital Sunday Fund)						
VII.	WORKMEN'S COLLECTIONS (apart from Hospital Saturday Fund) ...						
VIII.	ENTERTAINMENTS.					151	0 3
IX.	INVESTED PROPERTY.						
	Dividends ... ..						
	Rents ... ..						
	Income Tax Returned ... ..						
	Interest on Deposit or Current Account ... ..						
X.	NURSING INSTITUTION.						
	Private Nurses ... ..						
	Nurses' and Probationers' Fees ...						
XI.	PATIENTS' PAYMENTS.						
	In-Patients ... ..				369	0 0	
	Out-Patients ... ..						
	Board of Education Medical Grant, 1st April, 1919, to 31st March, 1920 ... ..				252	0 0	
						621	0 0
XII.	RECEIPTS UNDER THE NATIONAL INSURANCE ACT.						
XIII.	OTHER RECEIPTS.						
	Cot Subscriptions ... ..					120	0 0
	Total Ordinary Income carried forward .. ..					£929	18 6

See note on page 28.

EXPENDITURE.

A. MAINTENANCE.	£	s.	d.	£	s.	d.	£	s.	d.
I. PROVISIONS.									
1. Meat ... ..	182	19	5						
2. Fish, Poultry, etc. ... ..	13	12	4						
3. Butter, Bacon, etc. ... ..	76	8	6						
4. Eggs ... ..	4	10	6						
5. Milk ... ..	327	4	4						
6. Bread, Flour, etc. ... ..	77	4	5						
7. Grocery ... ..	130	5	10						
8. Vegetables and Fruit ... ..	77	13	3						
9. Malt Liquors ... ..									
10. Aërated Waters and Ice ... ..									
				889	18	7			
II. SURGERY AND DISPENSARY.									
1. Drugs, Chemicals, Disinfectants, etc.	20	6	1						
2. Dressings, Bandages, etc. ... ..	28	14	8						
3. Instruments and Appliances ... ..	15	3	11						
4. Wines and Spirits ... ..									
5. Sundries ... ..									
				64	4	8			
III. DOMESTIC.									
1. Renewal and Repair of Furniture	49	15	10						
2. „ „ Bedding and Linen	51	10	10						
3. Renewal and Repairs of Hardware, Crockery, Brushes, etc. ... ..	20	3	0						
4. Washing done off Hospital pre- mises ( <i>average weekly number</i> <i>of articles 351</i> ) ... ..	168	5	5						
5. Cleaning and Chandlery... ..	26	12	6						
6. Water ... ..	9	15	0						
7. Fuel and Lighting—									
(a) Coal ... ..	132	2	1						
(b) Gas ... ..	49	13	5						
(c) Electric Current ... ..									
(d) Oil, Wood, etc. ... ..	4	10	2						
8. Uniforms (Nurses, Porters, etc.)	21	18	10						
9. Sundries ... ..	1	16	10						
				536	3	11			
IV. ESTABLISHMENT.									
1. Insurance ... ..	5	19	2						
2. Renewals and Repairs ... ..	42	1	10						
3. Annual Cleaning ... ..	28	17	6						
4. Garden ... ..	60	2	1						
				137	0	7			
V. SALARIES, WAGES, &C.									
1. Medical ... ..	73	10	0						
2. Dispensing ... ..									
3. Nursing ... ..	285	9	0						
4. Other Officers ... ..									
5. Mechanics, etc. ... ..									
6. Porters ... ..	2	4	10						
7. Domestic Servants ... ..	146	5	7						
8. Scrubbers ... ..	10	14	4						
9. Pensions ... ..									
				518	3	9			
Forward ... ..				£2,145	11	6			



## INCOME.

	£	s.	d.	£	s.	d.	£	s.	d.
To Amount brought forward	...	...					929	18	6
B. EXTRAORDINARY.									
I. LEGACIES.									
2. GRANT FROM BOARD OF EDUCATION	...			434	0	0			
Total Extraordinary Income							434	0	0
Total Income	...	...					1,363	18	6

NOTE.—*All Subscriptions and Donations other than the above are included in the Account of the Cheyne Hospital.*

Balance, being excess of Total Expenditure over Total Income for the Year	...						1,541	12	8
							£2,905	11	2

## EXPENDITURE.

	£	s.	d.	£	s.	d.	£	s.	d.
Brought forward				2,145	11	6			
1. Printing and Stationery ..	8	12	9						
2. Postages ... ..	27	11	3						
3. Advertisements ... ..									
4. Sundries, Carriage Hire, etc.	52	14	4						
				<u>88</u>	<u>18</u>	<u>4</u>			
Total cost of Maintenance							2,234	9	10
<b>B. ADMINISTRATION.</b>									
1. Official Salaries—Proportion of £400 ... ..	133	6	8						
2. Pensions ... ..									
3. Official Printing & Stationery	23	0	0						
4. Official Postage & Telegrams	7	0	0						
5. Official Advertisements ...									
6. Law Charges ... ..									
7. Auditors' Fees ... ..	3	3	0						
8. Sundries, Travelling, etc. ...									
				<u>166</u>	<u>9</u>	<u>8</u>			
<b>II. FINANCE.</b>									
1. Appeals ... ..									
2. Commission ... ..									
3. Festivals, Bazaars, etc. ...				80	0	11			
				<u>80</u>	<u>0</u>	<u>11</u>			
Total Cost of Administration							246	10	7
Total Cost of Maintenance and Administration							<u>2,481</u>	<u>0</u>	<u>5</u>
<b>C. RENT, RATES AND TAXES.</b>									
I. Rent ... ..									
II. Rates and Taxes ... ..				44	0	0			
				<u>44</u>	<u>0</u>	<u>0</u>			
Total Rent, Rates and Taxes							44	0	0
Total Ordinary Expenditure							<u>2,525</u>	<u>0</u>	<u>5</u>
<b>D. EXTRAORDINARY EXPENDITURE.</b>									
I. Interest ... ..									
II. Contributions to other Institutions									
III. Festivals, Bazaars, etc., for new buildings or equipment, or the extinction of debt incurred for such purposes ... ..									
Festivals, etc., for Endowment, or other Capital purpose ...									
IV. School Expenses ... ..				380	10	9			
				<u>380</u>	<u>10</u>	<u>9</u>			
Total Extraordinary Expenditure							380	10	9
Total Expenditure .. ..							<u>£2,905</u>	<u>11</u>	<u>2</u>



## SCHEDULE A.

## Statement of Property Invested for Special Purposes.

	£	s.	d.
£1,000 Great Central and Midland Railway 3½ per cent. Guaranteed Stock (for "Every Girls" Cot) at cost	...	1,030	0 0
£337 5s. 4d. Bank of England Stock (for "George Horatio" Cot) at cost	...	1,000	0 0
£1,037 13s. 2d. Natal Government 3 per cent. Stock, (for "Wordsworth" Cot) at cost	...	1,000	0 0
£1,000 South Eastern Railway 3 per cent. Preference Stock, (for "Mary Anna Harrison" Cot) at cost	...	1,007	11 0
£995 Great Northern Railway 3 per cent. Preference Stock, (for "Arminel Cary" Cot) at cost	...	1,002	10 0
£923 Nottingham Joint Station 3 per cent. Stock (for "The Children's" Cot) at cost	...	1,000	0 0
£977 West Australian 3½ per cent. Stock (for "Katie Mackenzie Fairfax" Cot) at cost	...	1,000	0 0
£310 10s. New South Wales 3 per cent. Stock, (for "Christian Helena Gildea" Cot) at cost	...	300	0 0
£786 London and South Western Railway 4 per cent. Consolidated Preferential Stock, 1881, (for "Winifrid" Cot) at cost	...	1,000	0 0
£500 Nottingham Corp. 3 per cent. Redeem. Stock, (Including £200 Legacy, Mrs. Montefiore, and "Cranstoun Kerr" Cot) at cost	...	480	1 0
£900 Great Eastern Railway 4 per cent. Guaranteed Stock (for "Jean Marjorie Campbell" Cot) at cost	...	1,076	13 6
£495 Gt. Northern Railway 3 per cent, Preference Stock, (for "R. H. Raphael" Cot) at cost	...	498	15 0
£1,015 Madras and Southern Mahratta Ry. 4 per cent. Debenture Stock, (for "Anne Fairfax" Cot) at cost	..	999	18 0
£1053 5 per cent. War Loan Stock, 1929-1947 (for "Venetia Mexborough" Cot) at cost	...	1,000	0 0
Carried forward ...	...	£12,395	8 6

## SCHEDULE A.—Continued.

	£	s.	d.	£	s.	d.
Brought forward				12,395	8	6
£1,015 2s. 6d. West Australian Government 5¾ per cent. Stock 1930/40 at cost				1,000	0	0
Freehold Property, 63, Cheyne Walk, Chelsea, and Cross Keys Yard, part of total value of £6,263 17s. 6d., allocated as security for the following:—						
£1,000 for "Daniel Pidgeon" Cot.						
£300 for "Sibell Evelyn" Cot.						
£1,000 for "The Founder's" Cot.						
£753 16s. for "Charles Kingsley" Cot.						
£750 for "Violet" Cot.				3,803	16	0
				<u>17,199</u>	<u>4</u>	<u>6</u>
INVESTMENTS ON ACCOUNT OF "THE FOUNDER'S GIFT" CAPITAL ACCOUNT:—						
£1,500 Great Western Railway 5 per cent. Guaranteed Stock at cost			2,039	6	6	
£1,600 Southern Punjaub Railway 4 per cent. Cumulative Preference Stock at cost			1,528	1	0	
£3,100 East Indian Railway 3 per cent. New Debenture Stock at cost			2,824	18	0	
£1,000 Great Central and Midland Railway 3½ per cent. Guaranteed Stock at cost			1,040	1	0	
£5,000 Midland Railway 2½ per cent. Debenture Stock at cost			3,987	11	0	
£1,500 Canadian Pacific Railway Perpetual 4 per cent. Consolidated Debenture Stock at cost			1,665	19	3	
£2,000 London and South Western Railway 4 per cent. Consolidated Preference Stock, 1881 at cost			2,412	3	6	
£3,000 London County 3 per cent. Consolidated Stock at cost			2,805	1	0	
£3,000 Metropolitan Water Board (B) Stock at cost			2,926	18	6	
£400 India 3 per cent. Stock at cost			311	0	0	
£7,000 Mortgage Advance on Freehold Property: Brewers Green Mews, etc.			7,000	0	0	
			<u>28,540</u>	<u>19</u>	<u>9</u>	
Loan on account of St. Nicholas Hospital						
Added			£3,071	5	4	
			<u>1,361</u>	<u>6</u>	<u>10</u>	
			4,432	12	2	
				<u>32,973</u>	<u>11</u>	<u>11</u>
				<u>£50,172</u>	<u>16</u>	<u>5</u>



## SCHEDULE B.

## Statement of Property Invested for General Purposes.

	£	s.	d.	£	s.	d.
£430 E. Lacon & Co., Ltd. Mortgage Debenture Stock at cost				488	1	0
£250 Western Australian Government 3 per cent. Inscribed Stock (1916-1936) at cost				215	5	0
£1,500 Dominion of Canada 3½ per cent. Registered Stock (1930-1950) at cost				1,463	11	9
£1,050 Bombay, Baroda and Central India Railway Capital Stock at cost				1,055	8	10
£500 Western Australian Government 3¾ per cent. Inscribed Stock (1940-1960) at cost				495	13	8
£20 4½ per cent. War Loan Stock ... ..				20	0	0
£170 North British (Edinburgh and Glasgow Railway) 4½ per cent. Preference Stock at cost				250	0	0
£147 5 per cent. War Loan Stock, 1929-1947 at cost				140	0	0
£250 Victory 4 per cent. Registered Bonds				212	10	0
				<u>4,340</u>	<u>10</u>	<u>3</u>
No. 63, Cheyne Walk (purchased with Cross Keys Yard) Proportion of Total Cost as at 31st December, 1911	2,762	7	0			
Cross Keys Yard (purchased with 63, Cheyne Walk) Proportion of Total Cost, as at 31st December, 1912	<u>3,501</u>	<u>10</u>	<u>6</u>			
				6,263	17	6
Less Amount allocated as security for Cot Endowments ... ..	<u>3,803</u>	<u>16</u>	<u>0</u>			
				2,460	1	6
“Old Church” Studio and Porter’s Lodge cost to 31st December, 1917 .. ..				1,362	16	.1
				<u><u>£8,163</u></u>	<u><u>7</u></u>	<u><u>10</u></u>

## ALICIA AMÉ IN MEMORIAM SAMARITAN FUND.

31st DECEMBER, 1920.

Dr.	£	s.	d.		£	s.	d.
To Balance brought forward 31st Dec., 1919 ...	114	8	4	By Sundry Grants for Cloth- ing ... ..	34	8	7
„ General Fund—Interest on Balance ... ..	3	8	8	„ Sundry Grants for Cottage Homes Account ...	64	18	10
„ Miss A. A. Leith ...	5	0	0	„ Balance carried down ...	28	9	7
„ Miss E. Leith ...	5	0	0				
	<u>£127</u>	<u>17</u>	<u>0</u>		<u>£127</u>	<u>17</u>	<u>0</u>
„ Balance brought down	£28	9	7				

## THE "CRANSTOUN KERR" COT ENDOWMENT FUND.

	£	s.	d.
In hand 31st December, 1919 ... ..	293	13	7
Received during year ... ..	2	1	0
Interest on £293 13s. 7d. at 3 per cent. ...	8	16	3
In hand, 31st December, 1920 ... ..	<u>£304</u>	<u>10</u>	<u>10</u>

## CONTRIBUTIONS RECEIVED.

	£	s.	d.
Mrs. J. T. Woolley ... ..	1	1	0
Mrs. Hulton ... ..	0	10	0
The Lady Clementina Tottenham ...	0	5	0
The Lady Evelina Maude ... ..	0	5	0
	<u>£2</u>	<u>1</u>	<u>0</u>



## STATISTICAL TABLES.

## CHEYNE HOSPITAL FOR CHILDREN.

Financial Statistics for Year ending 31st December, 1920.

Compared with those of the previous Year ending 31st December, 1919.

## I.—IN-PATIENTS. (a) NUMBER OF BEDS AND IN-PATIENTS.

	† Numbers in 1919	* Numbers in 1920
(1) Number of Beds available for use ... ..	50	50
(2) Average number of Patients resident daily throughout the year. As counted and recorded daily ... ..	49.20	48.74
(3) Number of In-Patients in the Hospital at beginning of year ...	50	50
(4) Do. do. admitted during the year	45	37
(5) Do. do. in the Hospital at the end of the year ...	50	50
(6) Average number of days each Patient was resident ... ..	189.06	205.08
Ascertained by total number of Cots occupied during the year, divided by the number of Patients treated.		

## (b) ANNUAL EXPENDITURE ON IN-PATIENTS APART FROM THAT ON OUT-PATIENTS; AVERAGE COST OF EACH IN-PATIENT PER WEEK; AND AVERAGE COST OF EACH IN-PATIENT.

The following figures do not include any charge for Rent, Rates and Taxes.

	† Expenditure on In-Patients in 1919			‡ Average cost of each In-Patient per week in 1919			* Expenditure on In-Patients in 1920			‡ Average cost of each In-Patient per week in 1920		
	£	s.	d.	£	s.	d.	£	s.	d.	£	s.	d.
<b>Maintenance :</b>												
(7) Provisions ...	1160	6	4	9	0	½	1249	15	3	9	10	
(8) Surgery and Dispensary	269	5	5	2	11	½	204	15	1	1	7	½
(9) Domestic ...	818	19	1	6	4	½	1021	11	7	8	0	
(10) Establishment	239	13	3	1	10	½	384	17	1	3	0	½
(11) Salaries, Wages, &c.	1229	0	0	9	7		1204	0	3	9	5	½
(12) Miscellaneous Expenses	34	14	7	0	3	½	36	10	2	0	3	½
<b>Administration :</b>												
(13) Management	332	5	2	2	7		362	3	0	2	10	
(14) Finance ...	3	11	0	0	0	½	18	15	2	—	1	½
	£4,087	14	10				£4,482	7	7			

AVERAGE TOTAL COST of each In-Patient per week ...	1	11	10	1	15	1½
AVERAGE TOTAL COST of each In-Patient ... ..	43	0	6	51	10	5
Found by dividing the Totals of the money columns marked † and * respectively, by the number of In-Patients treated during the year.						

† These averages are found by dividing the amount against each of the Sub-heads (7) to (14), and against the Totals, by the average number of In-Patients resident daily (No. 2 above) and dividing by the number of weeks in the year. 52 2/7th.

The Statistical Tables relating to Out-Patients and Washing are not required, as no Out-Patients are treated and no Washing is done on the Hospital premises.



## STATISTICAL TABLES.

ST. NICHOLAS HOSPITAL (Branch of Cheyne Hospital.)

Financial Statistics for Year ending 31st December, 1920.

Compared with those of the previous Year ending 31st December, 1919.

## I.—IN-PATIENTS. (a) NUMBER OF BEDS AND IN-PATIENTS.

	† Numbers in 1919	* Numbers in 1920
(1) Number of Beds available for use ... ..	29	29
(2) Average number of Patients resident daily throughout the year. As counted and recorded daily ... ..	28.57	28.61
(3) Number of In-Patients in the Hospital at beginning of year	29	27
(4) Do. do. admitted during year	22	16
(5) Do. do. in the Hospital at the end of the year ...	27	24
(6) Average number of days each Patient was resident ... ..	204.49	243.56

Ascertained by total number of Cots occupied during the year, divided by the number of Patients treated.

## (b) ANNUAL EXPENDITURE ON IN-PATIENTS APART FROM THAT ON OUT-PATIENTS; AVERAGE COST OF EACH IN-PATIENT PER WEEK; AND AVERAGE COST OF EACH IN-PATIENT.

The following figures do not include any charge for Rent, Rates and Taxes.

	† Expenditure on In-Patients in 1919			† Average cost of each In-Patient per week in 1919			* Expenditure on In-Patients in 1920			† Average cost of each In-Patient per week in 1920		
	£	s.	d.	£	s.	d.	£	s.	d.	£	s.	d.
<b>Maintenance :</b>												
(7) Provisions ...	818	5	3		11	0	889	18	7		11	11
(8) Surgery and Dispensary	60	14	0		0	10	64	4	8		0	10½
(9) Domestic ...	451	4	1		6	0	536	3	11		7	2
(10) Establishment	269	16	0		3	7½	137	0	7		1	10
(11) Salaries, Wages, &c.	504	16	9		6	9½	518	3	9		6	11
(12) Miscellaneous Expenses	76	6	5		1	0½	88	18	4		1	2½
<b>Administration :</b>												
(13) Management	161	9	8		2	2½	166	9	8		2	2½
(14) Finance ...	—	—	—		—	—	80	0	11		1	1
	£2,342 12 2						£2,481 0 5					

AVERAGE TOTAL COST of each In-Patient per week .. ..	1	11	5½							1	13	2
AVERAGE TOTAL COST of each In-Patient ... ..	45	18	8							57	13	10½
Found by dividing the Totals of the money columns marked † and * respectively, by the number of In-Patients treated during the year.												

† These averages are found by dividing the amount against each of the Sub-heads (7) to (14), and against the Totals, by the average number of In-Patients resident daily (No. 2 above) and dividing by the number of weeks in the year, 52 2/7th.

The Statistical Tables relating to Out-Patients and Washing are not required, as no Out-Patients are treated and no Washing is done on the Hospital premises.



SOME ACCOUNT OF THE OCCUPANTS OF THE  
ENDOWED AND SUBSCRIBED COTS.

DECEMBER 31ST, 1920.

---

THE ENDOWED COTS.

---

THE "CHARLES KINGSLEY" COT,

Founded July 1, 1878, in memory of the late Charles Kingsley.

EDMONT CLIFFORD (*Tuberculous Disease of Spine*)—His general health is good; otherwise his condition is as before.

THE "EVERY GIRLS' " COT,

Endowed 1883, by Miss Alicia Leith and some friends.

GANDE, ROSE (*Tuberculous Hip*)—Discharged.

ABBOTT, MARGARET (*Chronic Rheumatic Endocarditis*)—There is very little change to report.

THE "VIOLET" COT, founded February, 1884.

BAILEY, ALFRED (*Tuberculous Disease of Hip*)—He is much improved and gets up all day, and can walk about well on crutches.

THE "DANIEL PIDGEON" COT,

In Memoriam, 1900. Permanently Endowed January, 1901,  
by J. M. P.

SMITH, FRANCIS (*Tubercular Spine*)—Was discharged.

HUCKER, GEOFFREY (*Chronic Valvular Disease of the Heart*)—Died very shortly after admission.

HOWES, NELLIE (*Tuberculosis of Hip*)—She is making good progress and gets up.

## THE "KATIE MACKENZIE FAIRFAX" COT.

ANSCOMBE, MARY (*Spinal Curvature*)—She made a good recovery and was discharged.

LITCHFIELD, SYLVIA (*Pott's Disease and Dorsal Paraplegia*)—She remains in much the same condition.

## THE "WINIFRID" COT,

Instituted in December, 1882, by Mr. and Mrs. Wilfrid Loder, and now Endowed by Bequest of the late Wilfrid Loder, Esq.

WILLS, HARRY (*Pott's Disease of Spine and Tubercular Knee*)—He remains in much the same condition.

## "THE FOUNDER'S" COT,

Instituted by the late Mr. Wickham Flower, and completed 7th November, 1906.

HILLS, HARRY (*Tubercular Knee*)—Discharged.

## "THE "JEAN MARJORIE CAMPBELL" COT,

Endowed by the late Miss Jane Arabella Campbell, in memory of her Niece, Jean Marjorie Campbell, 18th March, 1907.

CULLUM PATRICK (*Caries of Spine and Tubercular Knee*)—He is improving and gets up.

## THE "GEORGE HORATIO" COT,

Endowed in 1886 by Mr. and Mrs. Henry Lucas, in memory of their little Son, George Horatio Lucas.

ARTHUR DENSHAM (*Still's Disease*)—Has been discharged cured.

TOWNSEND, GEORGE (*Tuberculous Disease of Spine*)—He is improving slowly and is getting good movement in the legs.



## THE "WORDSWORTH" COT,

Named May, 1891, and Endowed January, 1898, from the  
Proceeds of Entertainments given by the Pupils of  
Mrs. Henry Wordsworth.

MORTIMER, EUNICE (*Tuberculosis of Left Hip*)—Is doing well and has been fitted with a splint and will get up shortly.

## THE "MARY ANNA HARRISON" COT,

Endowed by the late Lawrence Harrison, Esq., in memory of  
his Wife, January 1st, 1899.

GEO. F. MOBBS (*Tubercular Peritonitis*)—Was discharged cured.

MILLER, D. (*Incipient Freidericks*)—He has been discharged cured.

APPLES, NELLIE (*Chronic Endocarditis*)—Has improved a little since admission).

## THE "ARMINEL CARY" COT,

Instituted in Sept., 1889, and Endowed in February, 1900, by  
Colonel and Mrs. Lucius Cary, in memory of their little  
Daughter, Arminel Cary.

SPICER, KATHLEEN E. (*Tubercular Left Hip*)—Has done well. She is now paid for by the Pensions Office.

LYNCH ROSINA (*Caries of Spine, Psoas Abscess*)—She is showing signs of improvement.

## THE "CHILDREN'S" COT,

Instituted January, 1884, and endowed by Children's Subscriptions,  
and Collections made by Children of St. Peter's, Cranley Gardens,  
Mrs. Hollams, The Children of Shere, The Boys of Bengoe School,  
and others. Hon. Treasurer, Miss Evelyn Pearse.

PEARKS, EDITH (*Tuberculous Disease of Hip*)—Died.

FRENCH, EDITH (*Spinal Curvature*)—She is doing well.

## THE "ANNE FAIRFAX" COT,

Endowed 13th December, 1913, in memory of Mrs. Anne Fairfax,  
by her two daughters.

WALTERS, ROSE M. (*Tubercular Right Hip Joint*)—She is doing well and it is hoped that she will soon be well enough to go to the country.

## THE "AMY FAIRFAX" COT,

Endowed 21st Jan., 1920, by Bequest of the late Miss Amy Fairfax.

LAGDEN, FLORENCE (*Tubercular Spine*)—Has much improved.

## THE "VENETIA MEXBOROUGH" COT,

Endowed 1917 under the Will of the late Countess of Mexborough.

COHEN, LESLIE (*Hip Disease*)—His condition is much the same, but he keeps bright and happy.

---

 SUBSCRIBERS' COTS. (FREE.)
 

---

## THE "ALL FELLOWS' AND CLAUD ALEXANDER" COT,

Instituted Lady Day, 1901, and supported by  
Herbert Alexander, Esq.

GEORGE REED (*Tuberculous Spine and Psoas Abscess*)—  
He is in a very serious condition.

## THE "ST. NICHOLAS" COT,

Instituted December, 1916, by "The St. Nicholas Cot League."

CORK, AMELIA V. (*Tubercle of Sacrum and Lower Lumbar Region*)—She has been discharged greatly relieved.



THE "ST. THOMAS'" COT,

Instituted December, 1919, by "The St. Nicholas Cot League."

OVENDEN, MARGARET (*Tubercular Disease*)—She was removed for an operation and died shortly afterwards.

J. T. WHITE (*Tuberculous Disease of Hip*)—He is now convalescent and will soon be fit for discharge.

THE "ST. AUGUSTINE" COT,

Instituted 16th June, 1920, by "The St. Nicholas Cot League"

ANNIE L. TYRRELL (*Tuberculous Glands of Neck*)—She shows considerable improvement in her general condition and is doing well.

---

FREE LIFE COTS.

---

THE "LUCY ELAM" COT,

Presented by the Committee to Miss Elam, in recognition of her services in organising the Sale of Work in November, 1896, by which over £400 was obtained.

CULLUM, PATRICK (*Caries of Spine and Tubercular Knee*)—Transferred to the "Jean Marjorie Campbell" Cot.

"THE RICHARD H. RAPHAEL" COT,

Instituted on 2nd March, 1910, by Mrs. R. H. Raphael, in memory of her Husband.

WELFARE, WILFRED (*Spastic Paraplegia*)—His condition is unchanged.

THE "CHRISTIAN HELENA GILDEA" COT,

Established 20th December, 1901, by the Members of "The Children's Salon," in connection with "The Gentlewoman" and christened in the name of the Daughter of the Founder and Chairman of the "Soldiers and Sailors" Families Association.

BURTON, THOS. (*Mitral Stenosis*)—He is much improved, and is able to be up all day, and remains well.

THE "SIBELL EVELYN" COT,

Endowed by the Hon. Mrs. Lumley for her lifetime. In memory  
of Sibell Evelyn Lumley, Daughter of Lieut.-Col. The Hon.  
Osbert and Mrs. Lumley.

SUMMERS, WINIFRED (*Osteo Myelitis of Femurs with  
Pathological Dislocation of Hip*)—Discharged.

SMITH, NELLIE (*Chorea*)—She is doing well and gets up  
daily.

---

HALF PAYMENT LIFE COTS.

---

THE "CRANSTOUN KERR" COT,

Instituted June 9th, 1879, by Miss Kerr and Miss A. Kerr, and  
Endowed May 10th, 1909, in their memory during the lifetime  
of Miss M. Kerr (now Mrs. Clifford Gilbert).

SIMMONDS, NELLIE (*Tuberculous Left Hip*)—Her general  
condition has improved. She looks decidedly better.

---

SUBSCRIBERS' COTS. (HALF PAYMENT.)

---

THE "HERBERT'S" COT.

Instituted December 30th, 1880.

HILLS, HARRY (*Tubercular Knee*)—He has been dis-  
charged cured.



## THE "KENSINGTON" COT.

Instituted May 9th, 1882, and supported by the Children, past and present, of Kensington, by the offertories at the Children's Festival Service at St. Mary Abbots' Church, and by a few other Friends.

Hon. Treasurers—Mrs. Pearson and Miss Gibbes.

BAILEY, ALFRED (*Tuberculous Disease of Hip*)—He has much improved and gets up all day, and can walk about well on crutches.

## THE "VIOLET CONSTANCE" COT,

Instituted January, 1885, "In Memoriam Violet Constance Noble," and supported on behalf of the Executors of the late J. Noble, Esq., until 1914, now supported by Mrs. Cochran.

HANNAH O'CONNELL (*Tuberculous Dactylitis*)—Has been discharged cured.

SPANTON, W. J. (*Infantile Paralysis*)—He is doing very well and is up and able to walk about with sticks.

## THE "BURTON" COT,

Instituted December 25th, 1889, by Mrs. Buckley (now Lady Wrenbury).

JETTA PERMAN (*Paraplegia*)—Condition much as before.

## THE "DOROTHY" COT,

Instituted August, 1891, and supported by J. Douglas Charrington, Esq.

HANNAH O'CONNELL (*Tuberculous Dactylitis*)—Discharged.

PERRING, EDWARD (*Tubercular Hip*)—Has done very well. All sinuses healed. Looks well and happy.

THE "RICHARD CHARLES RODES MILNES" COT,

July 30th, 1882—March 20th, 1890,  
Instituted January 1st, 1896, and supported by  
The Hon. Mrs. Arthur Henniker.

EDWARD PERRING (*Tubercular Hip*)—Has done very well. All sinuses healed. Looks very well and happy.

---

COMPLIMENTARY COTS.

---

THE "LILY" COT.

THE "COL. JOHN KELLY HOLDSWORTH, R.A.,  
MEMORIAL COT."

Instituted by the Exors. of the late Mrs. Holdsworth, in  
memory of her husband.

THE "VAUGHAN" COT,

Instituted February, 1910, by Mrs. Batt-Mills in loving  
memory of her Son, G. Vaughan Batt-Mills, R.N.

THE "WINIFRED SLINGSBY" COT,

Named on 30th April, 1919, by Miss El. S. Peirse-Duncombe  
in memory of her sister, Mrs. J. G. Eustace.



## LEGACIES.

*IMPORTANT NOTICE.*

## MORTMAIN AND CHARITABLE USES ACT, 1891.

Land and House Property may now be given by Will to or for  
the benefit of a Charity.

See former Reports for previous Legacies.

		£	s.	d.
1910	Executors of the late Miss Emma Brandreth ...	250	0	0
	Executors of the late George Salting, Esq. ...	225	0	0
	Executors of the late Mrs. Edgell Hunt, 6th Instalment ...	114	1	6
	Executors of the late Sir John Hollams ...	100	0	0
	Executors of the late Dr. Cantrel ...	25	0	0
	Executors of the late Mrs. Fanny M. Allen ...	30	0	0
1911	Executors of the late Miss Jane Godwin ...	200	0	0
1912	Executors of the late Mrs. Charlotte M. Barnato ...	100	0	0
	Executors of the late Miss M. B. Hubbard ...	50	0	0
	Executors of the late Mrs. Girdlestone ...	5,111	2	5
	Executors of the late Mrs. Flury ...	25	0	0
1913	Executors of the late Mrs. Sarah Leitch ...	10	0	0
1914	Executors of the late Wm. Stansfield, Esq. ...	2,425	19	5
1915	Executors of the late Wm. Stansfield, Esq. ...	7	16	0
	Executors of the late Mrs. Mary Kelly Holdsworth ...	250	0	0
1916	Executors of the late Wm. Stansfield, Esq. ...	4	0	0
	Executors of the late Miss E. M. Kolle ...	50	0	0
	Executors of the late Miss Mary Jane Cook ...	50	0	0
1917	Executors of the late Miss M. E. Gill ...	308	10	0
	Executors of the late Countess of Mexborough ...	800	0	0
	Executors of the late William Stansfield, Esq. ...	4	0	0
	Executors of the late Mrs. Edward Phillips ...	1000	0	0
	Executors of the late Miss Frances M. Cardwell ...	300	0	0
	Executors of the late Leopold Salomons, Esq. ...	250	0	0
1918	Executors of the late Mrs. W. F. Pearse-Thompson ...	53	8	11
	Executors of the late William Stansfield, Esq. ...	10	3	0
1919	Executors of the late Asher Wertheimer, Esq. ...	500	0	0
	Executors of the late Miss E. Cunningham ...	50	0	0
	Executors of the late Miss Annie W. Harrison ...	500	0	0
	Executor (The Public Trustee) of the late Mrs. L. Bloek ...	100	0	0
1920.	Executors of the late William Stansfield, Esq. ...	3	2	6
	Executors of the late Sir James Innes, Bart. ...	1,7500	0	

## LIST OF GOVERNORS.

## LEGACIES.

- Abrahams, Alphonse, M., Esq., 16, Upper Hamilton Terrace, N.W. 8.  
 Bell, Miss Amy C., Sesame Club, 28, Dover Street, W. 1.  
 Conway, C. J., Esq., 2, Garden Court, Temple, E.C.  
 Cunliffe, Sir Robert Ellis, Board of Trade, Whitehall, S.W. 1.  
 Edge, H. T., Esq., 5, Waterloo Street, Birmingham.  
 Hall, Miss C. V., 10, Mulberry Walk, Chelsea, S.W. 3.  
 Hubbard, Miss M. M. E.  
 Huntsman, James E., Esq., 10, Drapers Gardens, E.C. 2.  
 Loder, Mrs. Wilfred, The High Beeches, Handcross.  
 Lush-Wilson, Herbert W., Esq., 2, Paper Buildings, Temple, E.C. 4.  
 Macnaghten, Sir Melville Leslie, C.B., 32, Warwick Square, S.W. 1.  
 Montefiore, Claude, Esq., 12, Portman Square, W. 1.  
 Mortimer, Stanley, Esq.  
 Mott, Thomas, Esq.  
 Mumford, Sydney L., Esq., 1, New Inn, Strand, W.C. 2.  
 Rowe, George William, Esq., 28, Lincoln's Inn Fields, W.C. 2.  
 Salamons, Mrs. L., 7, Stratton Street, Piccadilly, W. 1.  
 Saunders, Major.  
 Scott, H. C., Esq., 14, Royal Crescent, Brighton.  
 Shoubridge, H., Esq.  
 Skinner, Colonel, T. H., Tillington Hill, Petworth, Surrey.  
 Spencer, Samuel, Esq.  
 Thomas, Gilbert W., Esq., 115, Gower Street, W.C. 1.  
 Warren, R. A., Esq., 99, Great Russell Street, W.C. 1.  
 Whitby, Humphrey, Rev., 31, Harman Street, Kingsland Road, E.  
 Winter, Moritz, Esq., 79, Mark Lane, E.C. 3.  
 Underwood, W. M., Esq., The Manor House, Wickmere, Norfolk.

## DONATIONS.

- Adler, Mrs.  
 Bullivant, F. A., Esq., Queen Anne's Mansions, S.W. 1.  
 Brenton, Mrs. [Bart. & Co.  
 Calderon, Col. C. N., per E. A. Bliss, Esq., c/o Sir C. A. McGrigor,  
 Cohen, Miss Constance, 31, Oxford Square, W. 2.  
 Fishmongers, Worshipful Company of, Fishmongers' Hall.  
 Hirsch, Henry, Esq., 28, Austin Friars, E.C. 2.  
 Hore, E., Esq., c/o Messrs. Stephens & Stephens, 20, Essex Street, W.C. 2.  
 Hospital Sunday Fund (Arnold James, Esq., Sec.).  
 Hospital Saturday Fund.  
 "MARNIE."  
 Raphael, Mrs. R. H., 43, Grosvenor Street, W. 1.  
 Streatfeild, Mrs. E. J., 22, Park Street, W. 1.  
 Somerleyton, The Rt. Hon. Lord, P.C., K.C.V.O.

## SUBSCRIPTIONS.

- Batt-Mills, Mrs.  
 The Rt. Honble. The Earl of Cromer, M.V.O.  
 Geiger, Mrs., 75, Onslow Gardens, S.W. 7.  
 Halford, Captain Charles H., East Bergholt, Norfolk.  
 Harrison, Leonard F., Esq., 25, Austin Friars, E.C. 2.  
 Lucas, Mrs. H., Bramblehurst, East Grinstead.  
 Minet, W., Esq., 48, Gloucester Square, W. 2.  
 Poole, Reginald Ward, Esq.  
 Reiss, Fritz, Esq.  
 Turner, Alfred M., Esq., 11, Carlyle Mansions, Chelsea, S.W. 3.  
 Marcuse, Mrs. M. M.  
 Hichens, Harrison, Woolston & Co., Messrs.



## ENDOWED AND SUBSCRIBED COTS.

December 31st, 1920.

### ENDOWED COTS.

(Endowments Invested.)	Dividends <i>per</i> Trustees of Cheyne Hospital.)	£	s.	d.	£	s.	d.
Arminel Cary (Free)	... ..	1000	0	0			
Daniel Pidgeon (Free)	... ..	1000	0	0			
Every Girls' (Free)	... ..	1000	0	0			
George Horatio (Free)	... ..	1000	0	0			
Mary Anna Harrison (Free)	... ..	1000	0	0			
Wordsworth (Free)	... ..	1000	0	0			
Katie Mackenzie Fairfax (Free)	... ..	1000	0	0			
Winifrid (Free)	... ..	1000	0	0			
Children's Cot (Free)	... ..	1000	0	0			
Jean Marjorie Campbell (Free)	... ..	1000	0	0			
"The Founder's Cot" (Free)	... ..	1000	0	0			
Anne Fairfax (Free)	... ..	1000	0	0			
Venetia Mexborough (Free)	... ..	1000	0	0			
Amy Fairfax	... ..	1000	0	0			
Charles Kingsley (Half-payment)	... ..	753	16	0			
Violet (Half-payment)	... ..	750	0	0			
					15503	16	0
Sibell Evelyn (Life. Free.)	... ..	300	0	0			
Richard H. Raphael (Life. Free)	... ..	500	0	0			
Christian Helena Gildea (Life)	... ..	300	0	0			
Cranstoun-Kerr (Life)	... ..	250	0	0			
					1350	0	0

### SUBSCRIBED COTS. (Free.\* £40 per annum.)

	£	s.	d.
All Fellows and Claud Alexander			
Herbert Alexander, Esq., and Capt. Robert Alexander	40	0	0

### SUBSCRIBED COTS. (Half-Payment. ‡ £30 per annum.)

Burton.			
The Rt. Hon. Lord Wrenbury and Lady Wrenbury	30	0	0
Dorothy.			
J. Douglas Charrington, Esq.	30	0	0
Herbert's	30	0	0
Carried forward	£130	0	0

		£	s.	d.
Brought forward		...	...	130 0 0
Kensington.				
Miss Gibbes, and the St. Mary Abbot's Parish Finance Committee		...	...	30 0 0
		£	s.	d.
Conziani, Miss	...	0	10	0
Coxhead, Mrs.	...	0	5	0
Kaye, Mrs.	...	0	5	0
Scott, Miss	...	0	10	0
Maples, Mrs.	...	0	5	0
Pearson, Mrs.	...	0	10	0
Beauchamp, Miss M.	...	0	5	0
Voelcker, Mrs.	...	1	0	0
Bowman, Miss Guy	...	0	2	6
Bowman, Miss N.	...	0	2	6
Willis, Mrs. N.	...	2	2	0
Howden, Mrs. A.	...	1	1	0
Truscott, Mrs.	...	0	5	0
Forward		7	3	0
		£	s.	d.
Forward		7	3	0
Collection at S.M.A. Primary		7	3	0
Sunday School		0	13	0
Collections at Parish		26	12	4
Church		26	12	4
Balance in hand, 1919		34	8	4
		6	18	8
Less Expenses		41	7	0
		1	7	11
Annual Subscription to Cot		39	19	1
		30	0	0
Balance carried forward to*		£9	19	1
1921		...	...	...

Richard Charles Rodes Milnes

Hon. Mrs. Arthur Henniker ... 30 0 0

Violet Constance

*per* Mrs. Cochran ... 30 0 0

## COMPLIMENTARY.

Lily.

Lucy Elam. (Free Life Cot.)

Vaughan Cot at St. Nicholas Hospital.

The "Col. John Kelly Holdsworth Memorial" Cot.

£220 0 0

## ST. NICHOLAS HOSPITAL.

		£	s.	d.
St. Nicholas Cot		40	0	0
<i>per</i> St. Nicholas Cot League	...	40	0	0
St. Thomas Cot		40	0	0
<i>per</i> St. Nicholas Cot League	...	40	0	0
St. Augustine's Cot		40	0	0
<i>per</i> St. Nicholas Cot League	...	40	0	0
		£120	0	0

\* No payment required on behalf of the occupant.  
 † Parents or friends pay two shillings a week.



## LIST OF SUBSCRIPTIONS AND DONATIONS

Received during the Year ending December 31st, 1920.

\* Names marked with an asterisk are Governors.

(For other Governors, see separate List.)

## TO SUBSCRIBERS.

Early advice of changes of address, or of any inaccuracies in the following list, is particularly requested.

## CHEYNE HOSPITAL.

	Subs.			Dons.		
	£	s.	d.	£	s.	d.
II. M. The King (Special Christmas Donation) ...				5	0	0
A. M. ... ..	5	5	0			
Alexandra Day Committee, The ... ..				30	0	0
Anonymous ... ..	1	0	0			
Anonymous ... ..				0	10	0
Anderdon, H. E. Murray, Esq., Henlade House, Taunton ... ..	2	2	0			
Arden, Douglas, Esq., East Burnham House, near Slough ... ..	3	3	0			
Atkin, S., Esq., 49, Elm Park Gardens, S.W. ...	1	1	0			
Banon, Mrs. Lionel ... ..	3	0	0			
Barracrough, W., Esq., Dewsbury ... ..	0	10	6			
*Batt-Mills, Mrs. ... ..	5	5	0	5	5	0
Batten, Mrs. Mount, Mornington Lodge, West Kensington ... ..	2	2	0			
Battiscombe, Miss ... ..	0	10	6			
Beddoes, Mrs. ... ..	1	1	0			
Bell, Mrs. Courtney, 86, Ashley Gardens ...	1	1	0			
Bevington, Mrs. A., Silverwood, Pyrford ...	1	1	0			
Blunt, Mr. and Mrs. Reginald, 12, Carlyle Mansions, Chelsea ... ..	2	2	0			
Box for Donations at the Hospital ... ..				1	17	1
Bradley, Glenholme, Esq., 40, North Audley Street						
Bunyon Baptist Chapel (Children of) ... ..				0	5	0
Bruce, Dowager Lady ... ..	2	2	0			
Bryne, Mrs., 65, Cadogan Place, S.W. ... ..	2	2	0			
Buckingham, Mrs. (collected by) ... ..				0	11	9
Bullivant, Mrs. B. S. ... ..						
*Calderon, Colonel C. N. ... ..	1	1	0			
C. E. G. ... ..	1	1	0			
Carlyle School, The Pupils of, per Miss A. D. Crosby				15	14	6
Castle Laundry, The Proprietors of ... ..	3	3	0			
Charles, Rt. Hon. Sir Arthur, P.C., D.C.L. ...	2	2	0			
Carried forward ...	£40	15	0	59	3	4

	Subs.			Dons.		
	£	s.	d.	£	s.	d.
Brought forward ...	40	15	0	59	3	4
Chelsea Old Church Collection ...				3	1	7
Chelsea Congregational Church, Markham Square ...				1	14	0
"Christmas Stocking," A (N.O.M.C.) ...	1	0	0			
"Christmas Stocking," In memory of a, (E.N.M.C.) ...	1	0	0			
Clark, Mrs., 255, Cromwell Road, S.W. ...	1	0	0			
Clarke, Mrs. ...	1	1	0			
Clarke, Miss, Belmont, Lifford, co. Donegal ...	0	10	0			
Cohen, Mrs. Frank, 31, Oxford Square, W. ...	1	1	0			
Collins, Mrs. L., Angmaring, Surrey ...	1	1	0			
Colvin, Miss L. de V. ...	1	1	0			
Colvin, Miss H., 32, Craven Hill Gardens, W. ...				1	0	0
Combermere, Viscountess ...	1	1	0			
Connop, Mrs. S. E. ...	1	1	0			
*Cromer, The Rt. Hon. The Earl of, M.V.O. ...	10	10	0			
Crowder, A. G., Esq., 65, Portland Place, W. ...	2	2	0			
Curtis-Hayward, Miss ...	0	10	0			
Dalgleish, Mrs., 36, Palmerston Place, Edinburgh ...	1	1	0			
Daymond, Miss E. R. ...	1	1	0			
Deacon, Mrs. ...				5	0	0
Deane, Miss C. Maude, 200, Brompton Road ...	1	1	0			
Denny, Mott, and Dickson, Messrs., Limited, 14, Fenchurch Street ...				3	3	0
Dowsen, Miss, The Chesnuts, Hayes, Middlesex ...						
Drybrough, T. B., Esq., per C. O. S. ...	8	0	0			
Duffield, E. Ross, Esq., 27, Holland Park, W. ...	1	1	0			
Dyers, The Worshipful Company of ...				2	2	0
E. D. V. ...	2	2	0			
E. E. S. ...	5	5	0			
Edmunds, Rev. N. (Collection at Children's Harvest Thanksgiving Service, St. Saviour's, Valley End, Chobham) ...				1	7	3
Elam, W., Esq., 80, Cheapside, E.C. ...	2	2	0			
Elgee, Mrs. ...	0	10	6			
Ellis, Messrs. Joshua & Co., Ltd., Dewsbury ...	1	1	0			
Emery, Frederic W., Esq., 16, Tregunter Road, S.W. ...	1	1	0			
Farquhar, Alfred, Esq., 11, Belgrave Square, S.W. ...	2	2	0			
Farwell, Mrs. ...				0	5	0
Feilden, Miss C. H., Thorncliffe, Bonchurch, I.W. ...	2	2	0			
Feilden, Miss M. G. ,, ,, ,, ...	2	2	0			
Field, Miss ...	1	1	0			
Fleet, Algernon M., Esq., Darent Grange ...	5	5	0			
Fleming, Mrs., 12, Beaufort Gardens, S.W. ...	0	10	0			
Fletcher, E., Esq. per (Staff of Traffic Dept., Vicker's House) ...				0	6	0
Forbes, Miss ...	2	2	0			
Frank, Miss Edith M., 93, Cheyne Walk ...				2	2	0
Franks, Mrs. T. J., Ballyscaddane, Knocklong, Ireland ...	2	2	0			
Fraser, Miss, 37, Cheyne Court, S.W. ...	1	1	0			
Carried forward ...	£106	5	6	79	4	2



	Subs.			Dons.		
	£	s.	d.	£	s.	d.
Brought forward ...	106	5	6	79	4	2
Gabriel, Miss, Elmhurst, Wimbledon Common ...				5	0	0
Gauntlett, Miss (Junior Dept., Tabernacle Sunday School, Vallis, Trowbridge ...				0	7	6
*Geiger, Mrs., 75, Onslow Gardens, S.W. ...	10	10	0			
Gibb, Mrs. M. G. ...	1	1	0			
Gibbon, Mrs. C. Henry, 75, Lancaster Gate ...	3	3	0			
Gibbon, Master Henry ...	0	10	6			
Goldstein, Mrs. ...				0	10	0
Gordon-Lennox, Lady Caroline, 30, Wilton Crescent, S.W. ...	1	1	0			
Green, Miss Hilda, The Whittern, Kington, Hereford ...	0	10	0			
Gretton, Miss Muriel ...	3	3	0			
Grossmith, J. L., Esq., The Grange, Bickley ...	1	1	0			
Gunston, Miss, 51, Ennismore Gardens, S.W. ...	2	0	0			
*Halford, Capt. Charles H., East Bergholt, Norfolk ...	10	10	0			
Hamilton, Miss M. E., The Cottage, West Malvern ...	1	1	0			
Hamer, Messrs. H., & Sons, Dewsbury ...	1	1	0			
Hammersley, Mrs. ...	1	1	0			
Handford, W., Esq. ...				0	10	6
Hankey, Mrs. E., Notton House, Chippenham ...	2	2	0			
Hardy, Mrs., 4, Palace Gate, S.W. ...	1	1	0			
*Harrison, Leonard, F., Esq., Orchards, East Grinstead ...	10	10	0			
Harrison, Robert, Esq., Shiplake Court, Henley ...	5	5	0			
Hartopp, W. E., Esq., 168 Warwick Street, S.W. ...	1	1	0			
Hereford, Miss ...	1	1	0			
*Hichens, Harrison, Woolston & Co., Messrs., Austin Friars ...	10	10	0			
Hirsch, Mrs. L., 10, Kensington Palace Gardens, W. (2 years) ...	4	4	0			
Hollams, Mrs. (Collected by) Dene Park, Tonbridge ...				4	10	0
Hollams, Mrs. ...	£1	0	0			
Hollams, F. W., Esq. ...	1	0	0			
E. M. H. ...	0	10	0			
Fox, Mrs. ...	1	0	0			
J. H. ...	1	0	0			
	£4	10	0			
Hicks, Mrs. (In memory of Frederic J. Hicks) ...				10	0	0
Holt, Miss Annie, Summerhays, Woldingham, Surrey ...	2	2	0			
Hornby, C. H. St. J., Esq., Shelley House, Chelsea Embankment, S.W. ...	2	2	0			
Horne, Mrs., Shackleford, Godalming ...	2	2	0			
*Hospital Sunday Fund (per Philip Inman A., Esq., Sec.) ...				275	0	0
*Hospital Saturday Fund (per A. W. Davis, Esq., Sec.) ...				194	0	0
Hulton, Rev. J. C. La P., Congregational Collection, Dallington ...				1	0	0
Hutchinson, Mrs. Horace, 26, Lennox Gardens ...						
Im Thurn, Mrs., 5, Collingham Gardens ...						
Illingworth, Mrs. ...	1	1	0			
Carried forward ...	£185	19	0	570	2	2

	Subs.			Don's.		
	£	s.	d.	£	s.	d.
Brought forward ...	185	19	0	570	2	2
J. W. M. ...						
Jarvis, Miss M., Burley Lodge, Oatlands Park ...	1	1	0			
Jenkins, Mrs. E. S. ...	2	2	0			
Johnston, Mrs. F. Alexander, 56, Queen's Gate ...	5	5	0			
Jonas, Henry, Esq., Portley Wood, Whyteleafe, Surrey ...	1	1	0			
Jones, Lady... ...	5	5	0			
Jones, Sydney E., Esq., 2, Suffolk Lane, E.C. ...	2	2	0			
Kemp-Welch, H., Esq. ...	2	2	0			
King Edward's Hospital Fund for London ...				350	0	0
Knollys, Col. Sir Hy., R.A., K.C.V.O. ...				2	2	0
Lady Margaret's School, Fulham (per Miss D. Rymill)				0	10	0
Lambton, Miss Dorothy, Redfield, Winslow ...	2	2	0			
Lane-Fox, The Hon. Mrs., Bramham Park, Boston Spa, Yorkshire ...	1	0	0			
Le Bas, Capt. R. S., 38, Hornton Court, W. ...	1	1	0			
Legard, Frances, Lady, 22, Cadogan Square, S.W... ..	3	3	0			
LeGeyt, Miss, The Knoll, St. Saviour's, Jersey ...	0	5	0			
Leith, Miss A. A. ...	1	1	0			
Leith, Miss Emily ...	1	1	0			
Lewis & Lewis, Messrs. ...	5	5	0			
Lightfoot, Miss M. T. ...	1	1	0			
Loffet, Mrs. Lucien ...				2	2	0
Longman, Miss M., 18, Thurloe Square, S.W. ...	1	1	0			
*Lucas, Mrs. Henry, Bramblehurst, East Grinstead	10	10	0			
M. E. C. H. ...	1	1	0			
MacLeay, Mrs. Oswell, 29, Draycott Place, S.W. ...	5	0	0			
Macnaghten, Sir Melville L., C.B. ...	2	0	0			
*Marcuse, Mrs. M. M. ...	10	10	0			
Matthey, Miss Violet, Rose Mount, Eastbourne ...	1	1	0			
May, Mrs., St. Margaret's, Hampstead Heath ...	1	1	0			
Mellersh, Miss, Ashbrooke House, Godalming ...	0	5	0			
Mellersh, Miss M. ...	0	5	0			
Mellersh, Miss Agnes ...	0	5	0			
Mellersh, Miss Isabel ...	0	5	0			
Mellish, Miss E., Hodsock Priory, Worksop ...	2	0	0			
*Minet, W., Esq., and Mrs., 48, Gloucester Square, W. ...	10	10	0			
Mitchell-Innes, Miss, 32, Cheyne Court, Chelsea ...	1	1	0			
Moger, Joseph, Esq., Coverdale, Radcliffe Road, Croydon ...						
Monkswell, Dowager Lady ...						
Moore, H. T., Esq., Redbourne ...	1	1	0			
Moore, Mrs. H. T., Redbourn House, Redbourn ...	1	1	0			
Morgan, Mrs. E. Vaughan, 22, Harrington Gardens ...	1	1	0			
Morris, Mrs. Percy, 79, Elm Park Gardens, S.W. ...	5	5	0			
Neil, Mrs. M. M., Reigate ...	1	1	0			
Newbery, Mrs., Stafford House, Broxbourne ...	1	0	0			
Newsome, Major T. H., Dewsbury ...	1	1	0			
Nicholson, Dowager Lady ...	1	1	0			
Carried forward ...	£280	2	0	924	16	2



	Subs.			Dons		
	£	s.	d.	£	s.	d.
Brought forward ...	280	2	0	924	16	2
Oakley, F. J., Esq. (Exor. C. A. Gosnell, Esq., deceased) ...				5	0	0
Orpen, Sir W., K.B.E., A.R.A., 11, Royal Hospital Road ...	1	1	0			
Owen, Mrs. F. B. ...				1	0	0
Palairret, Mrs. ...				1	0	0
Palmer, Archdale, Esq. ...				2	2	0
Palmer, Miss ...	5	0	0			
Peirse-Duncombe, Miss, 65, Evelyn Gardens, S.W. ...	1	1	0			
Poland, Sir Harry, K.C. ...				50	0	0
*Poole, Reginald Ward, Esq. ...	10	10	0			
Power, Miss, Park House, Newbury ...	1	1	0			
*Pritchard, Hugh M., Esq. ...	10	10	0			
Radcliffe, Mrs., Binfield, Berks ...	1	1	0			
Rawlins, F. H., Esq., M.A., Eton College, Windsor ...	1	1	0			
*Reiss, Fritz, Esq., 42, Pont Street, S.W. ...	10	10	0			
Rickards, Miss E. M., 11, The Grove, Boltons, S.W. (collected by) ...				0	6	0
Ritchie, Miss, 6, Redcliffe Gardens ...	1	1	0			
Roberts, Mrs. A., 6 Lowndes Square, S.W. ...	1	1	0			
Royds, J. F. T., Esq., The Hill, Sandbach, Cheshire ...	1	1	0			
Russell, Hon. Maud, Kirkby Mallory, Hinckley ...	1	1	0			
St. Luke's Sunday School, per Miss Murray ...				0	18	6
S.C.C. ...				1	0	0
Saddlers, The Worshipful Company of ...				5	5	0
Sainsbury, Mrs. ...	1	1	0			
Samuel, Miss Evelyn Sylvester, 19, Cadogan Place, S.W. ...	1	1	0			
Saunders, Mrs. Sidney, Watlington Vicarage, Tetsworth, Oxon. ...	1	1	0			
Scarfe, H. S., Esq. ...	1	1	0			
Schreiber, Mrs., Nascot Grange, Watford ...	1	1	0			
Schlessinger, Capt. and Mrs., "A Thanksgiving Offering" ...				5	0	0
Schuster, Mrs. Ernest ...	2	2	0			
Seligman, Mrs., Iden Manor, Staplehurst ...	2	2	0			
Seligman, Mrs. W. L., 33, Prince's Gate, W. ...	1	1	0			
Shaxson, T. S., Esq., 33, Nicholas Lane, E.C. ...	1	1	0			
Shaxson, Thomas, Esq., 33, Nicholas Lane, E.C. ...	1	1	0			
Sheffield, The Lady ...	2	0	0			
Sidey, Mrs. C. Lyon ...	5	5	0			
Suter, Miss E. (Proceeds of dances at Kimbolton) ...				14	12	0
Smith, Mrs. Herbert, Marton, Rugby ...	1	1	0			
Smith, Messrs. G. & G. W., Dewsbury ...						
Smith, Mrs. Reginald ...	1	1	0			
Spoor, James L., Esq. ...	1	1	0			
Spring-Rice, Miss Agnes ...	1	1	0			
Spring-Rice, Miss G. E. ...	1	1	0			
Stainbank, Miss, 15, Clareville Grove, S.W. ...	2	2	0			
Steer, P. W., Esq., 109, Cheyne Walk, S.W. ...	2	2	0			
Carried forward ..	£355	7	0	1010	19	8

		Subs.			Dons.		
		£	s.	d.	£	s.	d.
	Brought forward	355	7	0	1010	19	8
Stoop, Mrs., West Hall, Byfleet, Surrey	...	1	0	0			
Strachan, W. M., Esq.	...				2	0	0
Strange, Miss L. G.	...	2	2	0			
Strong, Miss A. J.	...	2	2	0			
Tate, Mrs. A. G.	...	1	1	0			
Taylor Restell, Mrs. 15, Boltons, S.W.	...	1	1	0			
Thorold, A. H., Esq.	...				1	1	0
Trollope, The Misses B. and M., 12, Chantrey House, Eccleston Street, S.W.	...	1	1	0			
Tudsbery, Mrs F.	...				3	3	0
*Turner, Alfred M., Esq., 11, Carlyle Mansions, Cheyne Walk, S.W.	...	10	10	0			
Unna, Miss, 10, Phillimore Gardens, W. 8.	...	5	5	0			
Wakefield, W. C., Esq.	...	1	1	0			
Webb, W. A., Esq.	...				1	1	0
Whigham, Miss E., 3, Drayton Gardens, S.W.	...	1	1	0			
Whitaker, Mrs.	...	1	1	0			
White, Allan V., Esq., 33, Nicholas Lane, E.C.	...	1	1	0			
Wilkins, Mrs. Philip, 14, Wilton Place, S.W.	...	1	1	0			
Wilson, Lieut.-Col. E. M., C.B., C.M.G., D.S.O.	...	5	5	0			
Wilson, Mrs. H. J., 12, Cheyne Court, Chelsea	...	1	1	0			
Wilson-Patten, Hon. Miss Elizabeth	...	1	1	0			
Wombwell, Mrs., The Firs, Newbury, Berks	...	2	2	0			
Wood, Mrs. J. B., Henley Hall, Ludlow	...	2	2	0			
De Zoete & Gorton, Messrs.	...				5	5	0
	TOTAL	£396	5	0	1023	9	8

## ST. NICHOLAS HOSPITAL.

		Subs.			Dons.		
		£	s.	d.	£	s.	d.
Alexandra Day Collection	...				19	0	0
Box for Donations at the Hospital	...				2	7	3
Buss, H. S., Esq.	...	1	1	0			
Hardcastle, C. R. H., Esq., and Mrs.	...	1	1	0			
Larkins, Mrs.	...	2	2	0			
Millen, Mr., per, Proceeds of Whist Drive	...				4	5	0
Montefiore, Mrs. Sebag	...	2	2	0			
Money, Mrs. ...	...	0	5	0			
Ramsay, Miss M.	...						
Shepherd, Mrs.	...				2	2	0
Sturrock, Miss	...				0	10	0
Trimmer, Rev. H. E.	...	1	1	0			
Willett, H. T., Esq.	...	2	2	0			
	TOTAL	£9	14	0	28	4	3



## ACKNOWLEDGMENTS.

---

The Committee most gratefully acknowledge the various kind presents of Game, Clothing, Plants in pots, Flowers, Fruit, Pictures, Books, Toys, etc., received from many friends during the year, and greatly appreciated by the children; and it is hoped that any accidental omissions or inaccuracies in the following lists may be excused.

---

## FLOWER SERVICES AND HARVEST FESTIVALS.

- Bunyan Sunday School, Stevenage.      Flowers.
- Edith Grove Congregational Church.      Plants and Flowers.
- Holy Trinity, Sloane Square.      Plants and Flowers.
- Markham Square Congregational Church.      Fruit, Vegetables and Eggs.
- The Old Church, Chelsea.      Plants, Fruit and Flowers.
- Park Walk Girls' School.      Vegetables, etc.
- St. Luke's Church, Chelsea.      Plants, Flowers and Fruit.
- St. Mary's Church, The Boltons.      Fruit and Vegetables.
- St. Peter's Church, Cranley Gardens.      Plants, Fruit, Eggs and Flowers.
- Streatham Congregational Church.      Plants, Eggs and Vegetables
- Chelsea Old Church Sunday School.      Fruit and 5s. 9d. to be spent on fruit.

## ENTERTAINMENTS (Cheyne Hospital).

---

Miss Mydelton Evans	...	Tea and Concert to Lower Ward.
Mrs. Causton	... ..	Conjuror to Top Ward.
Miss Charles Fairfax,	per	
Dr. and Mrs. Gibson	... ..	Empire Tea to both Wards.
Mrs. Lucas	... ..	Chicken Dinner.
Mrs. Cary	... ..	Chicken Dinner and Tea to both Wards.
Mrs. Reiss	... ..	£5 for Christmas Tea and Bran Pie for Top Ward.
Earl and Countess of Cromer		Cinema and Crackers to " Roland Baring " Ward.

---

## ENTERTAINMENTS (St. Nicholas Hospital).

1920.

---

FEBRUARY	...	Tea and Magic Lantern to both Wards.
EMPIRE DAY	...	Mrs. S. Champion. Tea to both Wards.
JUNE	...	A Friend. Strawberry Tea to Children.
"		Miss Barnes. Pupils at Portpool. Strawberry Tea to Children.
JULY	...	Tea in Cornfields.
AUGUST	...	Mr. and Mr. S. Champion. Drive and Tea at The Elms, Sarre, to Convalescent Children, and Tea to both Wards.
"	..	Motor Drive to Convalescent Children.
"	...	Mr. Wright. Tea in Harvest Fields.
"	...	Tea and Gramophone.
DECEMBER	..	Concert and Christmas Tree and Tea in Lower Ward.
"	...	Tea and Christmas Tree in Upper Ward.
"	...	Tea and Conjuror in both Wards.
"	...	St. Nicholas Bell-Ringers.



Empty hampers, cases, &c., are, when in good condition always returned, carriage paid, to the senders; but as this entails considerable expense, it is requested that when possible, non-returnable packages may be employed (and so marked) by those who very kindly send presents for the Hospital.

## GIFTS (Cheyne Hospital).

Received during the Year ending December 31st, 1920.

Her Majesty Queen Alexandra. Easter Eggs, Cakes, Roses, Chocolates.  
Her Majesty Queen Maud of Norway. Christmas Tree.

Acland, Mrs. Building Bricks.  
VanAgnew, Mrs. Old Linen.  
Aitcheson, Mrs. Clothing and Toys.  
Alhambra Theatre, The Management. Theatre Tickets.  
Anonymous. 10s. for Children.

Banon, Mrs. L. £1 for Staff. Fruit, Dinner, Oranges.  
Bateman, Miss M. I. Books.  
Batten, Mrs. (Slough Sunday School Scholars). Books.  
Beer, Mrs. Crackers.  
Biggar, Miss Singers. Toys for "Rowland Baring" Ward.  
Blunt, R., Esq. £1 for Xmas. Fare, Box of Raisins.  
Braund, Mrs. Flowers often.  
Bridget, Miss. Scrap-book.  
Broke, Miss Betty. Xmas Cards.  
Browne, Lady Eileen. Cake, Crackers.  
Bullivant, Mrs. S. Flowers.  
Burrowes, Mrs. Chocolates.

Cameron, Mrs. D. R. Scrap-book.  
Carlyle School, The Principal. Toys.  
Cathcart, Lady. Toys.  
Cary, Mrs. £5 for Treat, Chicken Dinner and Tea for both wards.  
Causton, Master Eric. Scrap-book.  
C.E. Sunshine Committee (per Miss Ball). Books.  
Challen, Miss Rose. Flowers.  
Chelsea Palace Theatre (per Mr. Baker, Manager). Tickets.  
Chichester, Mrs. Abbott. Crackers.  
Cleaver, Mrs. Leonard. Toys.  
Craig, Rev. Tudor  
Crawshay, Mrs. Flowers and Vegetables often.  
Cromer, Countess of. Toys.

- Daniel, Miss G. E. Toys made by children.  
 Dawes, A. W., Esq. Flowers.  
 Day, Miss. Box of Tangerines.  
 Dennis, Master Jack. Flowers.  
 Dickens' Fellowship Guild, The (per Mrs. T. Hill). Toys.  
 Elias, Miss C. Calendar.  
 Ellis, Mrs. Barclay. Toys.  
 Engineers' Institute, Greenwich (per Mr. H. Green). Toys.  
 Estridge, Mrs.  
 Farrar, Mrs. Bryan. Books, Calendars.  
 Franks, Miss. Crackers.  
 Freemantle, Miss Joan. Post Cards and Album.  
 Garnier, Miss. Dolls.  
 Geiger, Mrs. Xmas. Present to Boys in "Rowland Baring" Ward.  
 Girl Guides, 11th Chelsea Company (per Capt. M. S. Adams). Vegetables and Evergreens.  
 Girls' Realm Guild (per Miss Agnes Chatby). Postcards.  
 Girl Guides and Brownies (per Miss M. Hoare). Flowers.  
 Goldfinch, Miss Isabel. Toys.  
 Goodman, Mrs. C. N. Books.  
 Hacking, Mrs. A. Books, Toys.  
 Harrison, L. F., Esq. Salmon, £5 for Xmas.  
 Harrison, Mrs. L. F. Flowers.  
 Hatten, Rev. J. C. Hospital Sunday Collection, Dollington, £1.  
 Hart, Mrs. Toys.  
 Helm, Miss. Rabbits.  
 Henderson, Mr. and Mrs. A. FitzGerald. Toys.  
 Hicks, Mrs. Clothing, Red Jackets, Night-gowns.  
 Hooper, Mrs. Winsmore. Lavender.  
 Hodgson, Rev. A. E. Flowers.  
 Incorporated Soldiers and Sailors Help Society (per the Secretary). Toys.  
 Infants of St. Mary Abbot's Sunday School (per Miss Gibbes). Tea Sets.  
 Irvine, Miss. Polyphon and Tunes.  
 James, Mrs. Violets.  
 Jenkinson, Mrs. Dixon. Books.  
 Johnston, Mrs. Audrey. "Angelus" to Lower Ward.  
 Kaye, Miss Marion. Flannel Night-gowns.  
 Karleon, Mrs. Alexander. Flowers, Plants, Books.  
 Kemp-Welch, Mrs. Bed-socks, Stockings.  
 Lambert, Mrs. Edgar. Toys, Books.  
 Lea, Miss Elsie. £1 for Cakes, etc., Chocolate, Scraps.  
 Leschallas, Miss. Flowers.  
 Loraine, Lady. 2 Boxes French Beans.  
 Lucas, Mrs. £6 6s. for Special Treat, Flowers.  
 Lumley, Mrs. Hope. Toys.  
 Mathison, Archibald, Esq. Gramophone Records.  
 Matthey, Miss. Toys, Table and Chair.  
 McIlwraith, Sir Malcolm and Lady. Books.  
 Mellish, The Misses. Clothing.  
 Merton, Mrs. Toys.  
 Menzies, Mrs. Toys.



- Miesigaes, Mrs. Books.  
 Moller, C. H. C., Esq. Magazine.  
 Morgan, Mrs. Vaughan. 2 Night-gowns, Scrap-book.  
 Morris, Mrs. P. C. Strawberries.  
 Moore, F. C., Esq. Fruit, Vegetables, Flowers often.  
 "Nursing Mirror," The Editor. Doll's Bed and Doll.  
 de Paravicini, Lady Eva. Toys.  
 de Paravicini, Lady Garcia. Books.  
 Park Walk Girls' School. Flowers.  
 Pelissier, Master Anthony. Toys.  
 Pears, Miss. Collection of Dolls.  
 Peirse-Duncombe, Miss. Plants, £1 for Xmas Fare.  
 Petherick, Mrs. Books.  
 Playhouse Theatre, The Management. Theatre Tickets.  
 Pope, Misses. Flowers.  
 Porter, Mrs. Dolls.  
 Probert, F. J., Esq. Cards, Toys, Flowers.  
 Reiss, Mrs. Strawberries.  
 Rixon, Miss. Marmalade.  
 Rodwell, Mrs. Hot Cross Buns.  
 Ronald, Mr. Landon. Books.  
 Ross, Mrs. Postcards.  
 Scrafton, Miss. Dolls, etc.  
 Schlesinger, Mrs. Gerald. Toys.  
 Sidey, Mrs. C. Lyon. Taxi Drive, Chocolates, Hot Cross Buns.  
 Simon, Mrs. C. Flowers.  
 Sinclair, Lady. Toys.  
 Smith, Mrs. Herbert, £2 2s. for Treat on 1st April.  
 Spicer, Mrs. G. 2 Night-gowns.  
 Spring-Rice, The Misses. Apples.  
 Swarder, Mrs.  
 Taylor, Mrs. Dolls and Dolls' Clothes.  
 Terry, Miss Ellen. Flowers.  
 Thursday, P., Esq. Old Linen.  
 Taylor-Restell, Mrs. Xmas Cake, Box of Oranges, Cheese Cakes, Toys.  
 Waite, Rev. G. Flowers.  
 Ward, Miss C. 10s. for Xmas.  
 White, Miss May. 2 Turkeys.  
 Whiting, Miss Isabel. Hamper of Holly and Mistletoe.  
 Wiggins, Nurse M. Flowers.  
 Winch, Mrs. J. M. Box of Books.  
 Windeler, Mrs. Air Pillow, Mackintosh, Syringe.  
 Wills, Lady. Potatoes, Vegetables, Poultry.  
 Wombwell, Mrs. Arthur. £5, Bean Pie.  
 Wrenbury, Lady. Hamper of Vegetables.

## GIFTS IN KIND (St. Nicholas Hospital).

Received during the Year ending December 31st, 1920.

- 
- Batt-Mills, Mrs. Toys.  
 Beck, L. Coker, Esq. £1 for Strawberries, 10s. for Chocolates.  
 Bennett, Mr. H. Chickens.  
 Brown, Mrs. Sweets.  
 Bolton, Mrs. Flowers.  
 Brunton, Dr. & Mrs. Tennis Balls, Toys, Books.  
 Brice, The Misses Joan and Phyllis. Chocolates and Cakes.  
 Broadley, Mrs. Bottle of Sweets.  
 Brockman, Miss L. Xmas. Cake.  
 Byrne, Mrs. 2 Flannel Night-gowns.  
 Champion, Mrs S. Flowers, Chocolates, Biscuits (often), Flowers for Confirmation Service.  
 Champion, Mr. and Mrs. S. Plums, Apples (often), Books, Crackers, Chocolates for Nurses.  
 Chapman, Col. and Mrs. Bon-bons.  
 Champion, Mr. and Mrs. Thomas. Flowers, Apples, Biscuits.  
 Champion, Miss Joan. 14 Books.  
 Carr, Miss E. A. Chocolates.  
 Carline, Mr. F. Flowers.  
 Cheyne Hospital Committee. Toys, Crackers, Plants for Garden.  
 Colyer, Mrs. Large Tin Toffee de Luxe.  
 Cossey, Mrs. W. £1 1s., to be spent on Xmas Fare.  
 Colegrove, Mr. and Miss. 4 Boxes of Chocolates.  
 Campbell, Mr. Strawberries and Fruit (often).  
 Denny, Miss. Surgical Dressings.  
 Donkin, Mrs. Woollen Vests.  
 Dunn, Miss. Woollen Vests.  
 Dillon, Mr. and Mrs. F. Sweets, Oranges.  
 Fletcher, Mr. and Mrs. Cakes and Chocolates.  
 Forth, Miss. Cakes and Xmas Presents.  
 Gore, Mr. F. 10s. for Treat.  
 Gardener (Brockman). Xmas Cake.  
 Harrison, Leonard, Esq. £5 for Xmas Treat to Children.  
 Hilton, Miss. 2 Garments.  
 Johnson, Hilton, Major and Mrs. Vegetables, Fruit, Game, Flowers, 10s. for Xmas Fare.  
 Laurie, The Misses. Toys, Books, Oranges, Crackers.  
 Larkins, Mrs. Flowers.  
 Lindley, Mrs. Garments.  
 Kemp-Welch, W., Esq. Scrap-books.  
 Marsh, Mrs. Potatoes and Vegetables.  
 Mount, Mrs. Plums, Grapes, Crackers.



- Nicholls, Mrs. Scrap-books  
 Packham, Bros. Swiss Rolls.  
 Packham, Mrs. Arthur. Xmas Gift to each child. Fruit.  
 Packham, Miss. Box of Chocolates.  
 Parker, Miss C. Postcards, Xmas Cakes.  
 Penn, The Misses. Toys, Crackers, Grapes.  
 Pininger, Mrs. Broome. Chocolates.
- Quested, Mrs. Vegetables.
- Sheppard, Mrs. Chocolates.  
 Stainbank, Miss. Chocolates.  
 Smith, Mr. and Mr. J. Fruit, Flowers, Butter, Apples, Chocolates, £2 for Xmas Fare.  
 Simes, Miss. Garments, Magazines, Books.  
 Stone, O. E., Esq. 10s. for Xmas Gifts.  
 Shersby, Mr. Large Tin Toffee de Luxe.  
 Shersby, The Misses. New-laid Eggs, Basket of Gooseberries, Cakes, Oranges.  
 Smith, W., Esq. Apples, Ducks.
- Terry, Mr. and Mrs. Apples, Flowers, Fruit, 10s. towards Xmas Festivities.  
 Trice, Mrs. E. Flowers, Xmas Cake.  
 Trice, "Baby." Birthday Cake to Children.  
 Trimmer, Rev. H. E. Easter and Xmas Cards to each child.  
 Toynebee, Mrs. Large Doll, Magazines for Nurses.
- Webster, Mrs. P. Picture Puzzles, Wool, Toys.  
 Wheeler, Mrs. Vegetables, Celery Plants.  
 Willett, Mr. and Mrs. H. T. Flowers, Oranges.  
 Williams, Miss Gwen. Sweets, Postcards, Xmas Cake.  
 Wright, Mr. Crackers.  
 Worthington, Mrs. Tin Toffee de Luxe.
- St. Nicholas-at-Wade, Church Harvest Festival, per the Vicar. Corn and Flowers.  
 Monkton Church Harvest Festival, per Rev. F. F. Brackenbury. Vegetables, Bread, Apples, Grapes.  
 Chilham Church Harvest Festival, per Mrs. Pemberton. Potatoes, Swedes, Apples, Marrows, Beetroots, Carrots, Cucumbers, Bread, Jam, New-laid Eggs, Tea, and Grapes.  
 By kind permission of the Committee of The Hall Convalescent Home, St. Nicholas-at-Wade. Vegetables.

Money Collected, per Mrs. Brunton, for Christmas Presents and Entertainments for Children :—

	£	s.	d.		£	s.	d.
Frederick Lonsdale, Esq.	5	0	0	Miss Grosse ... ..	0	10	0
Thomas Bowman, Esq.	1	1	0	Master Denys Teston ...	1	0	0
Miss Greenwood ... ..	2	2	0	Mrs. Pratt ... ..	0	2	6
Mr. Thurgood ... ..	0	5	0	Mrs. Groves ... ..	0	2	6
The Rev. F. L. Gowers	0	2	6				

## THE "ST. NICHOLAS COT" LEAGUE.

*Committee:* Miss Laurie (Chairman), Hon. Mrs. Bell Mrs. Hilton-Johnson, Miss Money, Mrs. Murphy, Miss Penn, Miss Ramsay, Mrs. W. White, Mrs. Worthington and Mrs. S. Champion (Hon. Sec.).

In June last Mr. L. Ramsay most generously remitted from Australia the sum of Forty Pounds, which enabled the League to establish a third Free Cot in the St. Nicholas Hospital. This has been named the "St. Augustine" Cot.

The occupants of the three cots are referred to under their respective headings on pages 39-40.

The Committee sincerely thank those who have contributed to the League funds for their kind help, and trust that year by year increased support will be given, as the prolonged treatment given in the St. Nicholas Hospital is of the greatest benefit to children of the neighbourhood, especially as they now receive systematic education while they are inmates of the Hospital.

The following contributions, amounting to £100 1s. 6d. have been received during the year:—

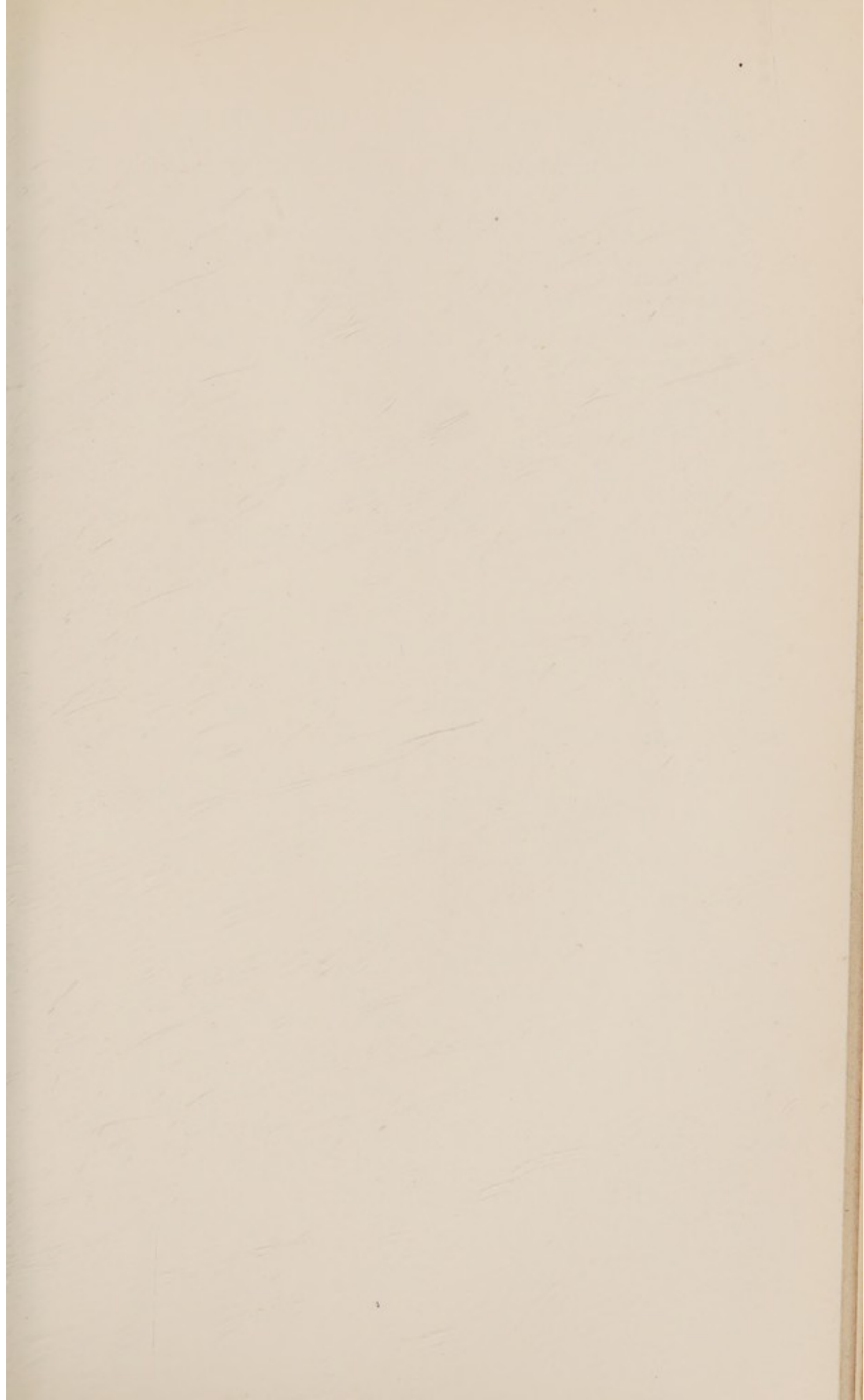
	£	s.	d.	s.	d.		£	s.	d.	£	s.	d.
Anderson, Mrs. ...	1	1	0			Brought forward				20	12	6
Amos, Mrs. A. ...	0	10	0			Collected by Miss						
Arnold, Miss ...	0	5	0			Laurie—						
Champion, Mrs. S.	2	2	0			Holland, Mrs. ...	2	2	0			
Reeves, F., Esq.	1	0	0			Williamson, Mrs.						
Reeves, Mrs. F.	0	10	6			Stephen ...	1	1	0			
Rae, Mrs. ...	1	1	0			Reid, Mrs. White-						
Douglas-Hamilton,						head ...	1	0	0			
Mrs. ...	0	10	0			Money, Mrs. ...	0	10	0			
Mount, Mrs. S. ...	1	1	0			Laurie, Miss ...	1	1	0			
Smith, W. C., Esq.	5	0	0			Laurie, Miss H.	1	1	0			
Wheeler, Mrs. T.						Anonymous ...	0	5	0			
W. ...	2	0	0			7	0	0				
			15	0	6	Collected by Mrs.						
Collected by Miss						Murphy ...						
Chapman ...			5	0	0	Colls, A. B., Esq.	2	0	0			
Collected by Mrs.						Murphy, Mr. ...	3	0	0			
Hilton-Johnson			0	12	0	5	0	0				
Carried forward	£20	12	6			Carried forward	£32	12	6			



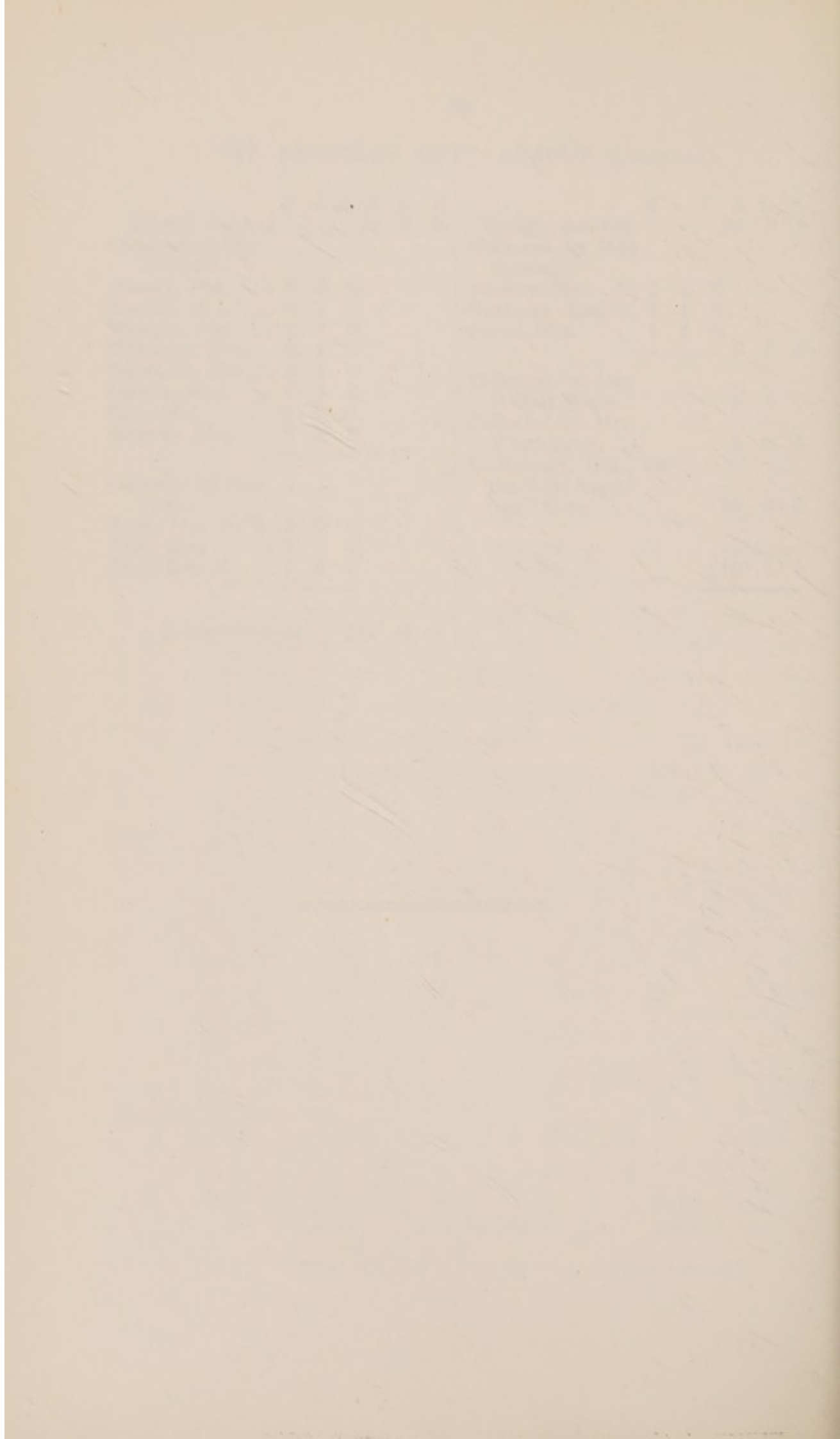
## “ST. NICHOLAS COT” LEAGUE (Continued).

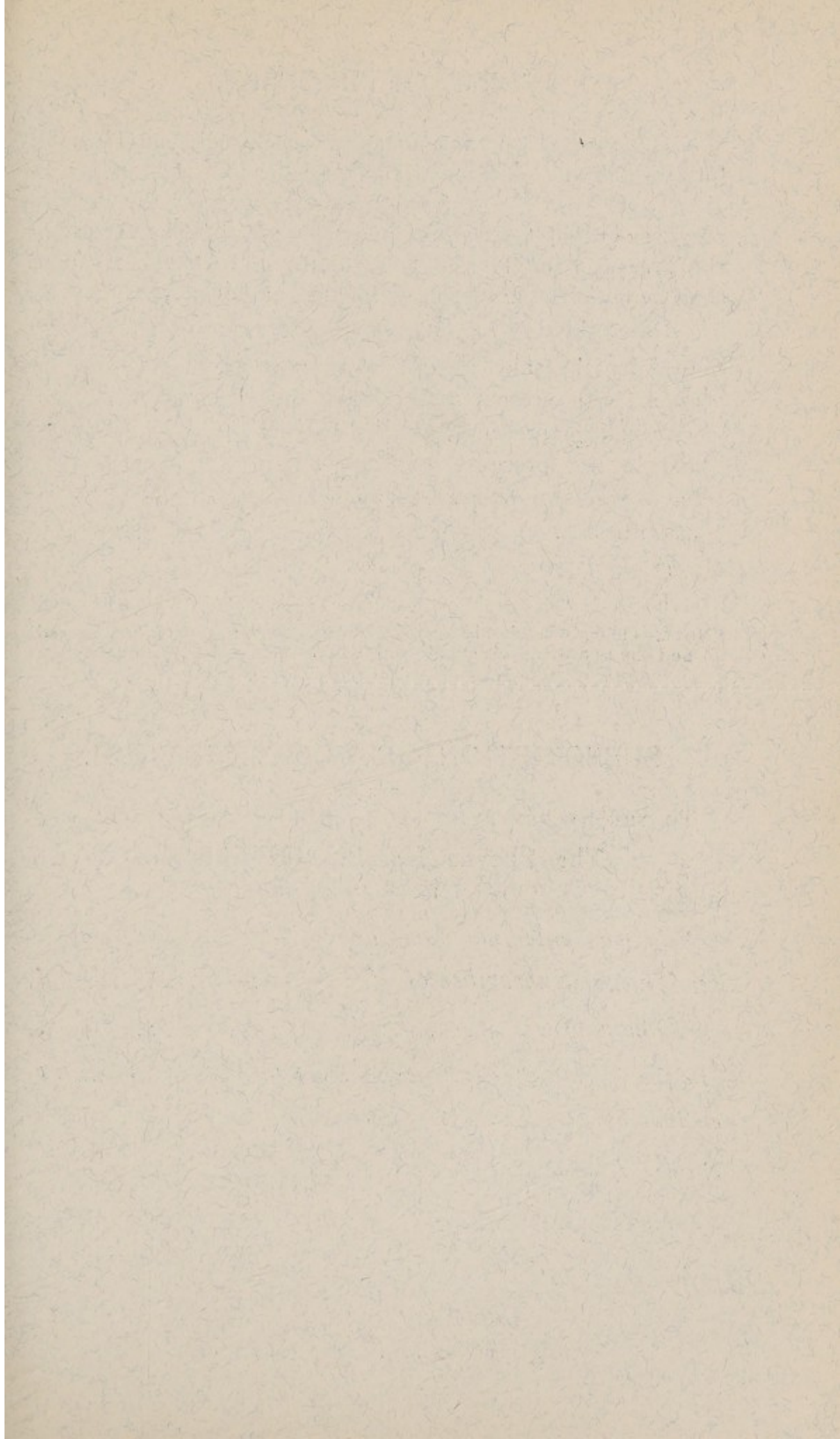
	£	s.	d.	£	s.	d.		£	s.	d.	£	s.	d.
Brought forward				32	12	6	Brought forward				42	9	6
Collected by Mrs.							Collected by Miss						
Nicholls—							Ramsay—						
Harvey, Mrs. ...	0	5	0				Ramsay, Miss ...	5	5	0			
Pemble, Mrs. ...	0	2	0				Gardiner, Mrs. R.	1	1	0			
Wraight, Mrs. ...	0	1	0				Speed, Mrs. ...	1	1	0			
Thurgood, Mrs. ...	0	1	0					7	7	0			
Dimmock, Mrs. ...	0	1	0				Collected by Mrs.						
Collyer, Mrs. ...	0	1	0				Wilfrid White		5	5	0		
East, Mrs. ...	0	1	0				Collected by Mrs.						
Nicholls, Mrs. ...	0	5	0				Worthington ...		5	0	0		
				0	17	0	L. Ramsay, Esq., for						
Collected by Miss							the “St. August-						
Penn—							tine” Cot		40	0	0		
Penn, Mrs. F. R.	3	0	0										
Penn, Miss ...	5	0	0										
Penn, Miss N. ...	1	0	0										
				9	0	0							
Carried forward				£42	9	6							

---











## FORM OF BEQUEST.

I bequeath to the Trustees of the Cheyne Hospital for Children, Cheyne Walk, Chelsea, the sum of £ : : free of legacy duty, for the general purposes of that Institution; and I declare that the receipt of the Treasurer for the time being of the said Cheyne Hospital shall be an effectual discharge for the same legacy.

Dated this                    day of                    192

Signed by the said <sup>(Testator)</sup><sub>(Testatrix)</sub> in presence of us both present at the same time, who in <sup>(his)</sup><sub>(her)</sub> presence, at <sup>(his)</sup><sub>(her)</sub> request and in the presence of each other, have hereunto subscribed our names as witnesses.                    A                    B

C                    D  
E                    F

NOTE.—The above should be signed where the letters A B are printed and the two witnesses should sign where C D and E F are printed.

## SUBSCRIPTION OR DONATION FORM.

TO THE SECRETARY OF

**The Cheyne Hospital for Children,**  
CHEYNE WALK, CHELSEA, S.W.

*You may enter my name as*

*an Annual Subscriber of £ : s. d.*

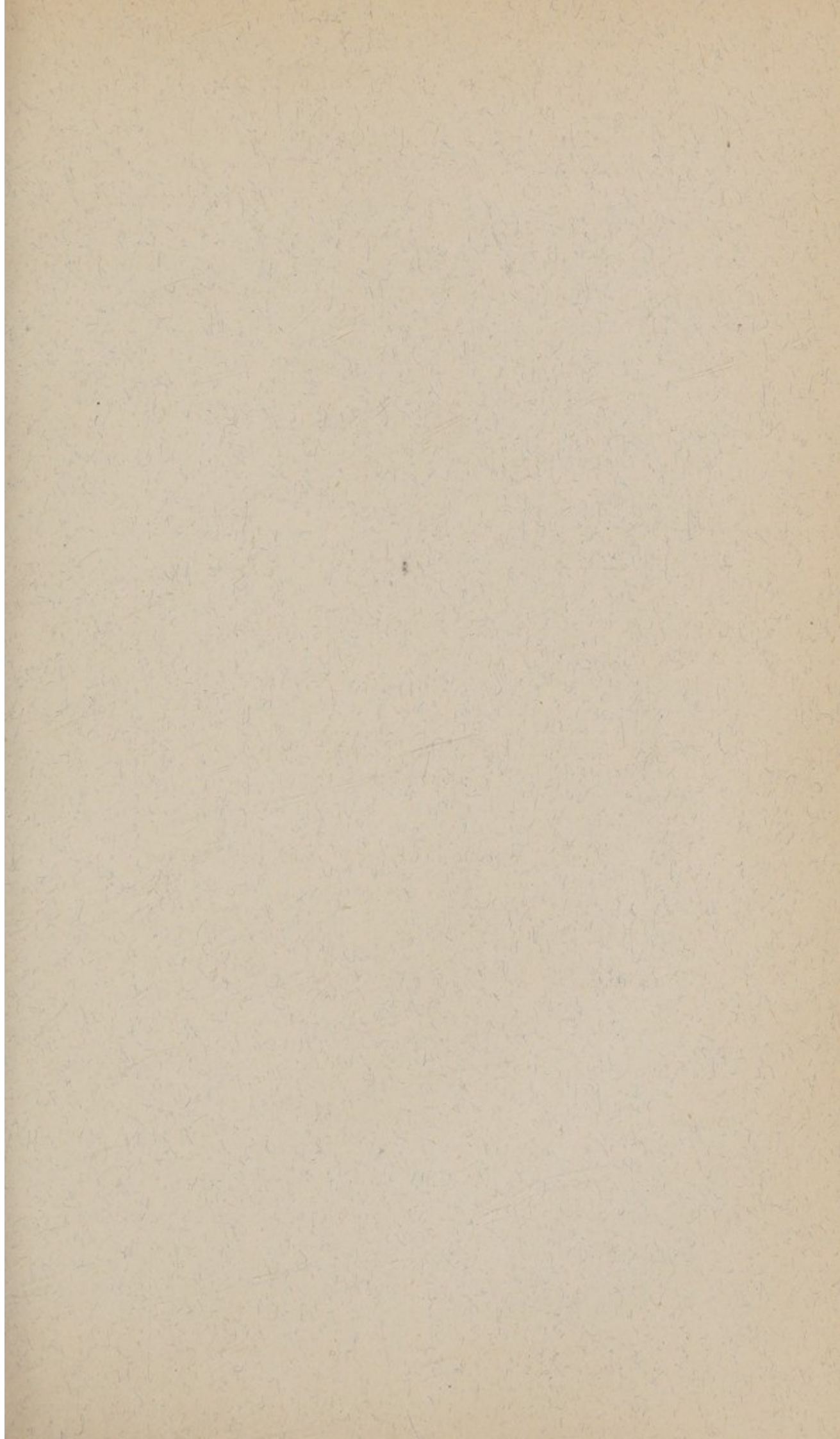
*a Donor of . . . £ : s. d.*

*to the Funds of the Cheyne Hospital, which amount I enclose by..... herewith.*

Name.....

Address.....

Date..... 192







THE  
LITTLE HOSPITAL  
BY  
THE RIVER