

Annual review : 2002 / Wellcome Library for the History and Understanding of Medicine.

Contributors

Wellcome Library for the History and Understanding of Medicine
Wellcome Trust (London, England)

Publication/Creation

London : Wellcome Trust, 2002

Persistent URL

<https://wellcomecollection.org/works/ew52mmwr>

License and attribution

You have permission to make copies of this work under a Creative Commons, Attribution license.

This licence permits unrestricted use, distribution, and reproduction in any medium, provided the original author and source are credited. See the Legal Code for further information.

Image source should be attributed as specified in the full catalogue record. If no source is given the image should be attributed to Wellcome Collection.



Wellcome Collection
183 Euston Road
London NW1 2BE UK
T +44 (0)20 7611 8722
E library@wellcomecollection.org
<https://wellcomecollection.org>

The Wellcome Library for the History and Understanding of Medicine

**Wellcome Library
for the History
and Understanding
of Medicine**

Annual Review 2002

WellcomeLibrary



The Wellcome Trust

The Wellcome Library – a unique and surprising resource

The Wellcome Library preserves the record of medicine, past and present to foster understanding of medicine, its history, and its impact in society.

The history of medicine is much more than just a chronology of diseases, treatments, pioneers and breakthroughs. Social, cultural and environmental issues are all contributory factors to our physical and mental well-being.

Accordingly, the Wellcome Library collections span works on numerous areas that have impacted on the human condition physically, spiritually and psychologically.

This holistic approach has resulted in a unique resource of extraordinary depth and variety. The Wellcome Library is full of surprises, even for those with interests outside medical science.

From a medical prescription written on papyrus c.1100 BC, to up-to-the-minute press cuttings on human cloning, the Wellcome Library charts the history and development of traditional and non-traditional medicine from all cultures and periods. Be it through text, pictures or moving images, the rich and fascinating story of medicine is revealed and explained, challenged and explored.

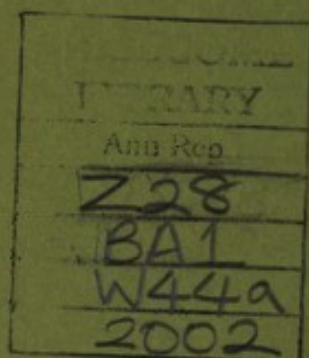
Welcoming...

The Wellcome Library is a reference library open to the public, Monday to Saturday, free of charge. Friendly and knowledgeable staff are on hand to help users, while the Wellcome Library's enquiry service and website are tailored for those unable to visit in person.

Rewarding...

The Wellcome Library is valued as much by social and cultural historians and commentators as it is by those with medical and scientific interests. Subject coverage includes:

- History of medicine and science
- Evolution, religion, social history
- Public health and sanitation
- Public engagement with science
- Biomedical ethics
- Science policy
- Folklore, witchcraft, magic
- Astrology
- Botany, botanical illustration, herbals
- Cookery and nutrition.



Fruit fly egg chambers. The dark areas where gene products involved in axis formation are localized. Daniel St Johnston, Wellcome Trust Medical Photographic Library



22501726512

Contents

2 Librarian's introduction

4 Acquisitions 2002

8 The Wellcome Library online

New websites for the Wellcome Library
and the Medical Photographic Library.

10 Material issues

Preserving and opening up the documentary heritage,
and preparing for a major move.

12 How the Wellcome Library is used

How authors, publishers and others benefit from the
Wellcome Library's resources.

14 Looking ahead...

15 Statistical summary

Staff list

Exhibitions

Patterns of use and statistical trends

Acquisitions

Contact details and opening hours





■ Summarizing the activities of the Wellcome Library in a few short paragraphs is no easy task. In a year when we have been in the news for saving an important medieval manuscript for the nation, when we have launched a major new image database on the web, when we have appeared in Adam Hart-Davis's *What the Tudors and Stuarts Did for Us* on primetime TV, and when Library staff have spoken at academic conferences, judged film festivals and been interviewed for London Weekend Television's *Sin City*, how do we sum it all up? With a sense of dynamism, with a sense of breadth, and with a sense of another good year of achievement on many fronts.

David Pearson
Librarian of the Wellcome Library

The highlights should not obscure the regular work of helping all kinds of people to make use of the Wellcome Library's many resources. During the year, over 3000 newly registered readers discovered the Library for the first time. Once again, many thousands of images were despatched, more enquiries were answered than in the year before, and more visits were made to the Special Collections reading room. We completed a major review of the Information Service (that part of the Library which concentrates on current biomedical issues), carried out a benchmarking and evaluation exercise, redesigned our website and launched a new suite of coordinated publicity materials.

The electronic agenda is high in our sights, as it is for all libraries today. Translating the vision of the Library to meet the challenges and opportunities of a digital age is essential. This is why we have:

- ♦ launched the Medical Photographic Library website, providing web access to over 100 000 contemporary and historical biomedical images (<http://medphoto.wellcome.ac.uk>, see p. 8);
 - ♦ made catalogue records for manuscripts and archives similarly web-accessible, through the new interface to our CALM 2000 database (<http://archives.wellcome.ac.uk>);
 - ♦ created MedHist, a new Internet gateway to evaluated web resources on medical history (<http://medhist.ac.uk>, see p. 9);
 - ♦ co-sponsored, with the Joint Information Systems Committee, a study of web archiving needs, carried out by the UK Office for Library Networking.
- In doing these things, we do not neglect the importance of continuing to develop the Library's many collections. A few of our more noteworthy acquisitions are featured on pages 4–7 but the statistics on page 19 summarize the fuller picture. We are keen to help ensure that the record of medicine is preserved for posterity not only in the Wellcome Library, but also elsewhere, and it was particularly encouraging to see that the success of the first phase of Research Resources in Medical History scheme enabled the Wellcome Trust to extend the scheme for a further two years, with another £1 million available to help libraries and archives with important collections in need of support (see p. 11).



Wellcome Library website

The importance of the Internet as a communication tool hardly needs to be explained and the Wellcome Library, like most libraries today, relies heavily on its web presence as a key interface between its users and its services, including catalogues as well as a host of other information.

The Wellcome Library website was completely overhauled during 2002 with a new architecture, and a new look and feel associated with the branding developed for leaflets and other print publications.

The site at <http://library.wellcome.ac.uk> is enriched with a host of images drawn from the collections, and offers a gateway to a wealth of knowledge.

Medieval manuscript

Opportunities to acquire medieval English medical manuscripts are few and far between and this mid-15th-century example is a particular treasure. Written entirely in English, apparently for a physician practising in Lincoln around 1454, the book includes medical texts, blood-letting tables, astrological charts and a hitherto unrecorded pilgrimage guide. Threatened with going to a collector abroad, the export licence committee recognized its heritage value and placed a temporary ban on its leaving the country, which allowed the Wellcome Trust to step in, with some help from the Science Museum PRISM Fund. It is a significant addition to the Library's existing important holdings of late medieval medical books.

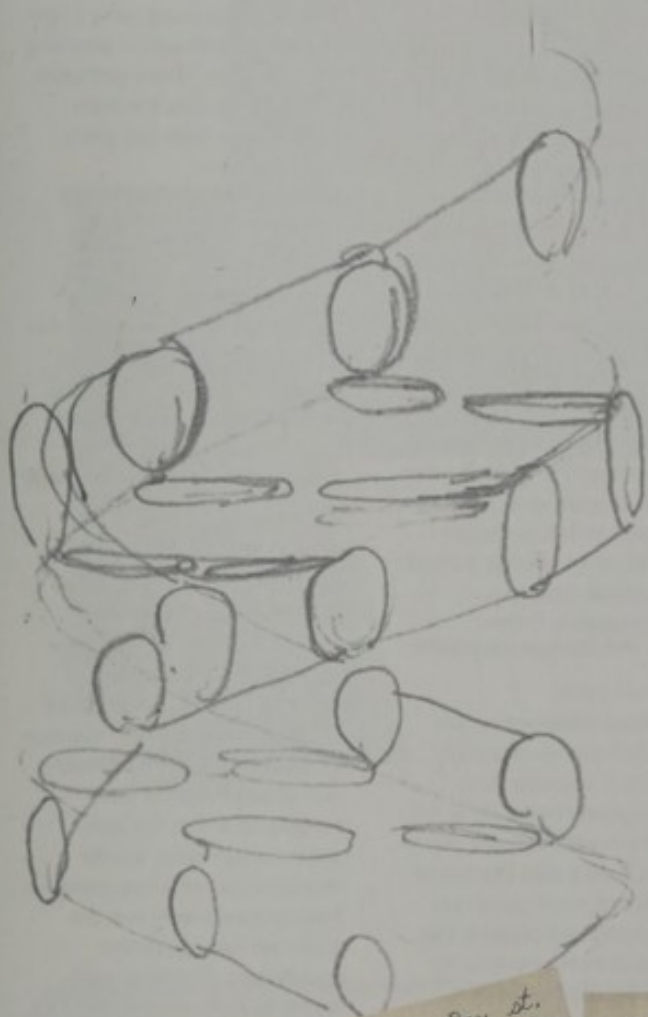
A digital version of the manuscript is available online at: <http://library.wellcome.ac.uk/resources/etexts/ms8004>



Acquisitions 2002

Throughout the year, the Wellcome Library has continued to develop its collections with a range of new acquisitions including material from the 15th to the 21st centuries





2381 Bay St.
 San Francisco
 California
 October 22, 1962

Dear Dr. Crick:
 Congratulations upon winning the Nobel Prize. All of us in San Francisco were overjoyed at the news.

You may remember me as the kid who helped escort you in a taxi from the Fairmont Hotel to Mt. Zion Hospital the night you gave the lecture. I am enclosing a photograph of the two of us taken by my cousin Dr. David Krahberg. I have always admired your

great work. I would appreciate an autographed reprint of your latest article in the October issue of the Scientific American. I saw a picture of you with side burns and I think you look better without them.

With great admiration,
 David Lenord Aron.



Crick papers
 Agreeing the purchase of Francis Crick's professional archive, with the help of the Heritage Lottery Fund, was a great highlight for the Wellcome Library at the end of 2001. During 2002 the papers themselves arrived. Covering the entire career of Crick, one of the great thinkers and influencers of science in the 20th century, the papers include notebooks, working papers, drafts of publications, correspondence with scientists around the world, and other memorabilia, such as the telegram announcing the award of the Nobel Prize in 1962, and letters from less predictable quarters, shown here. The archive is being catalogued and we hope that it will be fully listed and accessible, via the web catalogue, by the end of 2003. A selection of papers can be found at www.wellcome.ac.uk/genome.



1 Death's comrade

Political and social crises, or even just changes, influence the medicine of their time. Disruptions of human life during and after the Russian Revolution of 1917 required drastic action from the Soviet bureaucracy to deal with epidemics of typhus and cholera. Indeed the new order added new responsibilities for the state, resulting in public health campaigns conducted through posters and other educational means. In Bolshevik publicity, the typhus louse replaced the White Russian generals as public enemies. Here the louse is shown as Death's 'comrade', to be killed as ruthlessly as the political opposition.

Colour lithograph by O. Grin, Moscow, 1919. Catalogue No. 5366751

2 Curtain raiser

This brilliant iridescent curtain is actually made up of crystals of vitamin C (ascorbic acid). The foreground began life as the edge of a 'pool' of warmed vitamin C solution on a slide. The rest of the picture is made up of very fine, needle-shaped crystals that grew much more slowly as the solution cooled. The banded pattern is obtained by varying the rate of crystalline growth.

The image was made using a light microscope with special polarizing filters. Humans cannot synthesize vitamin C, but take it in from foods such as fruits and green, leafy vegetables.

M I Walker, Wellcome Trust Medical Photographic Library

3 Crystal clear

Produced during the campaign leading up to the Food Safety Act 1990. Design by David Mumby. By kind permission of Tim Lang, former Director, London Food Commission.

Archives and Manuscripts SA/LFC, Box 12

4 Open wide

The first book-length treatise on dentistry published in the USA. It contains advice on dental hygiene, warnings against quack remedies, and chapters on extraction, fillings, and prosthetic techniques. The engraved title-page shows a sufferer from toothache, with artificial teeth in the foreground and, in the background, a somewhat fanciful representation of a hippopotamus. Hippopotamus ivory was the preferred material for the manufacture of artificial teeth.

Benjamin James, *A treatise on the management of the teeth*, Boston, 1814. EPB/AM/USA/1814/JAM





5 Turkish delight
The illustration shows the internal organs of the human body compared to the constituent parts of a house. It provides interesting evidence of the synthesis of Western ideology in the Islamic world – a similar comparison having been made by Harvey, John Donne, and graphically by Tobias Cohn in his famous Hebrew book, *Ma'aseh Tobiyah*.
Ottoman manuscript uncatalogued

See page 19 for a list of further acquisitions made in 2001/02.

Picture this

■ In 2002, the Medical Photographic Library opened up new online access to some of the best of the Wellcome Library's images, covering the whole spectrum of medicine from historical to contemporary.

The site has been designed to enable users to find images they need as rapidly as possible. Quick search and advanced search options are available with fields specifically tailored to make searching easier. Images can be viewed as thumbnails or larger so you can scan through many images and click on the ones you want to see in more detail. If you register, you will be able to create and edit your own lightboxes or shopping carts and download, e-mail and order images straight from the site.

The site also highlights some of the Library's riches in important or topical areas – such as anatomy, genetics or plants in medicine.

The website (<http://medphoto.wellcome.ac.uk>) is the result of the Photographic Library's Digitization Project, which has been scanning images for the site since early 2000. The conversion of a sizeable

card index catalogue and the migration of all existing computer catalogue records culminated in the database that powers the website you can see now.

The digitization of images and cataloguing is still very much ongoing, but due to enormous demand for access we decided to 'go live' with the website now. Over 80 000 images are available online and more are being added every day. By summer 2003 more than 130 000 will be accessible.

This service is as new to us as it is to you. We would value your feedback on any aspect of the site so that we can improve it in any way possible to meet your needs. Contact us (medphoto@wellcome.ac.uk) and let us know your views.

Catherine Draycott
*Head of the Medical
Photographic Library
Wellcome Library*



The web is proving an invaluable tool for all kinds of people – and the Wellcome Library is planning to make good use of this new technology

Access to history

- As the amount of information on the Internet continues to grow, so there is an increasing need to develop services that provide signposts to the most reliable and useful resources. With this objective in mind, the Wellcome Library has developed MedHist (<http://medhist.ac.uk>) – a one-stop shop for locating high-quality Internet resources relevant to the study of the history of medicine.

Launched in August 2002, MedHist is essentially a web-based catalogue of Internet resources, of use to the medical historian and others. It provides links to resources which have been evaluated against a strict set of criteria to ensure they are of the highest quality, and a brief description of the purpose and main features of the resource. Additionally, subject keywords from the National Library of Medicine's MeSH (Medical Subject Headings) thesaurus are added, and, where appropriate, personal name entries from the Library of Congress Name Authority File.

The MedHist catalogue comprises a wide range of Internet resources, including e-mail discussion lists, electronic versions of classic texts, databases, collections of digitized images and electronic journals, among others.

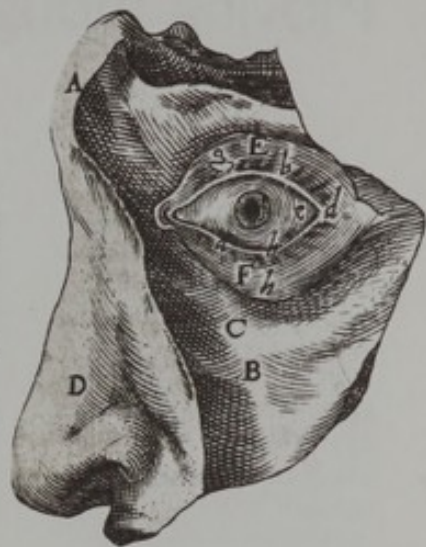
Locating resources on MedHist is very straightforward. Researchers may search the catalogue using keywords, and if they wish, limit their searches by type of resource or by historical period.

The catalogue may also be browsed by subject, using MedHist's own directory listing. There is also a timeline allowing searchers to view all resources within a specific historical period, which will be of use to those wishing to place their research into a broader historical context.

MedHist is constantly being developed. Current plans include the sharing of MedHist's resource description metadata with other related services (e.g. the Humbul humanities hub and SOSIG social science gateway), the adding of a conference announcements section and making available MedHist's 'new acquisition' listings in a 'news-feed' format which allows them to be reproduced across other websites.

David Little

Project Officer – MedHist Gateway
Wellcome Library



^ Detail of an eye, from *Theatrum anatomicum* by Theodor de Bry, 1605.

MedHist has been developed by the Wellcome Library and is hosted by the BIOME health and life sciences 'hub' (<http://biome.ac.uk>) at the University of Nottingham.



Moving thoughts

■ Huge physical moves are coming to the Wellcome Trust soon: a new HQ Building is opening next year on Euston Road, adjacent to the Wellcome Building, and the latter will then be extensively redeveloped to turn it into a new public face of the Trust, with extended exhibitions, conference, meeting and Library facilities. So in October 2002, I moved from my bench in Conservation and took up the challenge of a new role, seconded as Project Manager, Collections Migration and Accommodation. I am now responsible for planning the new storage areas for the Wellcome Library's diverse collections and for helping to ensure that the redesign of the Wellcome Library meets the needs of staff and its users.

The Wellcome Library currently has over 25 284 linear metres of material, growing daily. The Collections are varied not only in content but also in format. We have manuscripts in scroll form on both paper and parchment in the Oriental Collections, books in leather and vellum in Early Printed Books, oil paintings and watercolours in the Iconographic Collection, along with archives, documents and photographs (to name but a few). All of these items have specific storage requirements, both environmental and physical.

An extensive space audit of the collections had to be carried out, with the current 'size' of each type of material measured, the annual rate of growth calculated,

the type of storage method and any proposals for change logged. Our current storage provision, in Bentley House, although perfectly adequate is an adapted space. The new storage areas will be purpose built to British Standards, to comply with BS 5454 addressing potential hazards and security issues.

Collections will have to be moved from disparate locations to new storage areas. Moving fragile and vulnerable collections is an important part of the planning process. Paintings are handled very differently from books and need to be dealt with accordingly. It will be my role to make sure that items are transported with the minimum of fuss, but with the greatest care so that they can be available for the Library user as soon as possible.

Due to the complex nature of the building work involved, the Wellcome building will remain closed for at least a year. Provision has therefore been made for Library users to use temporary alternative accommodation on the north side of Euston Road. The Library website (<http://library.wellcome.ac.uk>) will be kept up to date with information regarding progress and any potential changes to Library opening hours or services.

Caroline Checkley-Scott
*Project Manager, Collections
Migration and Accommodation
Wellcome Library*



Historians rely on source materials. **Caroline Checkley-Scott** (left) explains how valuable and delicate materials will be handled during forthcoming moves, while **Sue Barclay** and **David Pearson** describe a scheme to preserve the UK's medical heritage

■ The study of history, in any field, depends on the survival of the primary documentation of the time, be it medieval hospital archives or 20th-century patient files. If the record is lost, the history is gone. We have a rich documentary heritage in medicine in UK libraries, archives and museums, but not all of it is accessible. Many collections are poorly catalogued, or in danger of destruction through their fragility or lack of proper storage. Recognizing this situation led the Wellcome Trust to set up the Research Resources in Medical History scheme, which distributed £1 million during 2001–02 to collections all over the country to fund cataloguing and conservation projects. Over £6 million-worth of applications were received, and making selections among many worthwhile requests was not easy. The good news is that the success of the scheme has led to its extension, with a further £1 million available in 2003–04.

Thirty-six separate awards were made in 2001–02, ranging in value from just under £3000 to just under £100 000. Most were in the £25–65 000 range. Grants went to libraries and record repositories of all kinds, all over the UK, to cover a variety of projects; the unifying theme was that of improving access to collections with the potential to make an important contribution to the study of medical history. Examples are:

- automation of the rare books catalogue of the Royal Society of Medicine, London;
- conservation of early medical licences and records of the Court of Arches (Lambeth Palace Library);
- cataloguing 19th-century medical pamphlets (Royal College of Physicians of Edinburgh);
- creating finding aids for medical archive resources in northeast England (Tyne and Wear Archives Service);
- preserving 20th-century hospital case notes (Lothian Health Services Archive, Edinburgh University);
- sorting and cataloguing the archives of the Papworth Village Settlement, Hospital and Trust (Cambridgeshire Archives Service);
- cataloguing the papers of R D Laing (Glasgow University Library).

Full details of these awards, and many others, can be found on the web at www.wellcome.ac.uk/rrmh, along with information for new applicants. The scheme was administered during 2001–02 in partnership with the British Library but is now run fully in-house and Sue Barclay (s.barclay@wellcome.ac.uk – 020 7611 8658) will be happy to talk to anyone who is thinking of applying and would like some advice. Any kind of publicly-accessible institution is eligible to apply and we are keen to see the funding put where it can make the most positive difference to our medical documentary heritage.

Sue Barclay

*Conservator,
Preservation and Conservation
Wellcome Library*

David Pearson

*Librarian
Wellcome Library*



How the Wellcome Library is used

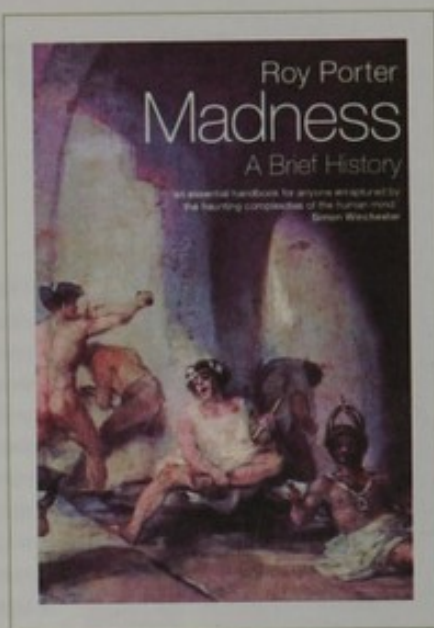
The Wellcome Library's wonderful resources are invaluable to researchers, but are also used in a variety of other contexts

Exhibitions...

The Wellcome Library has long been committed to the discovery of its collections via exhibitions, both on and off site, and every year many objects are loaned to displays around the world. In the temporary absence of a major exhibition space at headquarters on Euston Road (due to change in 2006, see p.8), the Wellcome Trust has funded a gallery at the Science Museum in which to mount exhibitions that use both historical and contemporary materials to explore aspects of medicine and its social impact. These draw extensively on the Wellcome Library collections, and also on the Wellcome collection of medical artefacts now deposited with the Science Museum. Two exhibitions mounted during 2002, 'Head-on: Art with the brain in mind' (March-July), and 'Metamorphing' (October-February 2003) were very well received both by reviewers and by the many thousands of visitors.



^ Confocal image of neurons in the brain, from the Medical Photographic Library collections, part of the 'Head-on: Art with the brain in mind' exhibition at the Science Museum. Medical Microscopy Sciences, UWCM



Books...

Of the many outcomes of work done in the Wellcome Library, books and articles are perhaps the most obvious. Every year, many new publications are issued based on research carried out here – the Wellcome Trust contribution may be a footnote, or some images, or the result of many months of work on a particular book or collection which underlie the whole thing. The untimely death of Roy Porter in 2002 deprived us of one of our most prolific and best known medical historians; his publications made regular use of Wellcome Library material. His posthumous *Madness: A Brief History* (2002), left, was, like many of his books, extensively illustrated with images from the Wellcome collections.

Publications...

Images from the Wellcome Library's Medical Photographic Library are used in many contexts, e.g. the background for a feature on genetics on BBC2's *Newsnight*, articles on rogue genes in skin cancer in *The Times* and the *Independent*, public health posters on AIDS for South African schools. Its pictures appear in magazines and journals as diverse as the *Lancet* and *Woman's Own* and books ranging from school curricular texts to glossy 'coffee-table' volumes and exhibition catalogues. The Photographic Library has over 9000 clients in 90 countries and many of its images can be viewed free and ordered from <http://medphoto.wellcome.ac.uk>

The image shown below is from the Tate Gallery's exhibition 'Exposed: The Victorian Nude', for which a number of items from the Wellcome Library's collections were lent and reproduced in the catalogue.



Television...

Film and broadcast media have the power to reach many people who may not be reached by the printed word. The Wellcome Library regularly receives requests from media researchers and film-makers to provide information, or to use the Library as a venue for a film sequence. Here Janet Browne, whose acclaimed biography of Charles Darwin was completed in 2002, is being filmed for an Icon Films production on 'What Killed Charles Darwin?' Earlier in the year the popular historian Adam Hart-Davis was filmed in the Wellcome Library, using one of our 16th-century anatomies to help explain *What the Tudors and Stuarts Did for Us*.



Looking ahead...

- Major themes in the Wellcome Library's thinking for 2003 and beyond are:
 - ♦ planning for the new public space which will be available for the Wellcome Library and its users from 2006, as part of the redevelopment of the Wellcome Building (see p. 10);
 - ♦ continuing to widen access to the Wellcome Library's great resources, and engaging with new audiences – a new Library Outreach Officer (Samantha Cairns) started work in January 2003 to take this agenda forward. One of her jobs will be promoting a new Library Awards scheme (see box, right);
 - ♦ building further on our existing digital library platform to make best use of the potential of the Internet;
 - ♦ continuing to strengthen our links with the wider national framework of library and archive provision, through collaboration and partnership.

The future is going to be challenging as well as exciting – the forward march of a digital age brings big questions to libraries, as well as opportunities. The Wellcome Trust, like so many organizations, is facing leaner times ahead in the light of the global economic situation. Onwards and upwards may get harder than it has been but in the year which marks the 150th anniversary of Sir Henry Wellcome – born in Wisconsin in 1853 – we believe that we are managing the legacy of his great collections with imagination, responsiveness and commitment, and helping to fulfil the mission of the great charity he founded.

David Pearson

Library Awards:

a new funding opportunity

In conjunction with the Trust's History of Medicine Programme, a new funding scheme is being launched to enable people to use the Library's resources to create any kind of work that communicates information or ideas about the wider understanding and impact of medicine. Award holders will receive £2000 a month for up to six months to allow them to work on projects. For details, visit the website at www.wellcome.ac.uk, and follow the links through:

→ History of Medicine → Funding
→ Public Engagement → Library Awards



Russian public health > document c.1920, showing unhygienic practices thought to lead to death from cholera.

Statistical summary

- 16 Staff list
- 17 Exhibitions in 2001–02
- 18 Patterns of use and statistical trends
- 19 Noteworthy acquisitions during 2001–02
- 20 Contact details and opening hours

Background
Treatise on hygiene and
syphilis. Japanese block-
printed book entitled *Yojo kun*,
possibly printed in Edo,
and dated 1713.

Staff lists

Staff as at 31 December 2002

David Pearson
Librarian

Anne van der Spelt
Librarian's Secretary

Maria Ketley
Administrative Secretary
(Friends of the Wellcome Library
and Centre – FWLC)

Collection Management
Zineta Sabovic
Head

Paul Davey
Cataloguing Services Manager

Anna Anstead
Assistant Librarian (part-time)
(Current Awareness Services)

Catherine Doggrell
Senior Assistant Librarian
(Current Awareness Services)

Yasmin Bokhari
Assistant Librarian (Acquisitions)
(maternity cover)

Moira Furber
Assistant Librarian (part-time)
(Current Awareness Services)

Stephen Lowther
Assistant Librarian (Cataloguing)

Branwen Lloyd-Evans
Assistant Librarian (Cataloguing)

Derek Scoins
Assistant Librarian (Acquisitions)

Alex Stutz
Project Manager (CCM Project)

Robert Wyburn
Assistant Librarian (Cataloguing)

Public Services
Wendy Fish
Head

Reader Services
Susan Gold
Reader Services Manager

Lina Bakhshi
Assistant Librarian (part-time)

Catherine Bergin
Assistant Librarian (part-time)

Alice Ford-Smith
Assistant Librarian

Phoebe Harkins
Assistant Librarian

Jette Nielsen
Assistant Librarian

Douglas Knock
Library Assistant

Sarah McCarthy
Evening Library Assistant

Jeremy Powell
Saturday Library Assistant

Simon Jones
Library Support Services Manager

Edward Bishop
Assistant, Library Services

Klif Fuller
Assistant, Library Services

Michael Jackson
Assistant, Library Services

Jenny Leigh
Assistant, Library Services

Damian Nicolaou
Assistant, Library Services

Danny Rees
Assistant, Library Services

Jim Williamson
Assistant, Library Services

Information Service
Elizabeth Graham
Information Service Manager

Kevin Dolby
Senior Information Officer

Louise Simon
Information Officer
(Public Understanding of Science)

Simon Warburton
Information Officer
(Biomedical Ethics)

Caroline Green
Information Officer

Nosheen Kahn
Saturday Assistant

Claire Sexton
Information Officer

Amelia Walker
Senior Information Assistant

Hazel Wright
Information Assistant

Special Collections
Julia Sheppard
Head (on study leave)

Richard Aspin
Acting Head

Tracy Tillotson
Secretary

Archives and Manuscripts
Lesley Hall
Senior Archivist (Outreach)

Christopher Hilton
Senior Archivist (Finding Aids)

Chris Beckett
Project Archivist (Crick Papers)

Vanessa Bell
Archivist (maternity cover)

Teresa Doherty
Archivist
Wellcome Foundation Project

Amanda Engineer
Archivist

Anne Lindsay
Archivist

Ross MacFarlane
Retroconversion Project

Nyree Morrison
Temporary Archivist

Adrian Steel
Assistant Archivist
Wellcome Foundation Project

Early Printed Books
John Symons
Curator

Jane Henderson
Assistant Curator

Oriental Collections
Nigel Allan
Curator

Nikolai Serikoff
Assistant Curator

Preservation and Conservation
Tony Bish
Head

Lara Artemis
Conservator

Sue Barclay
Conservator (maternity cover)

Anna Wise
Conservator

Systems Strategy
Robert Kiley
Head

Margaret Savage-Jones
Library Systems Administrator

Frances Hibbert
Library Systems Officer

David Little
Information Officer
MedHist Gateway

Stuart Dempster
MPL System Project Manager

Resoum Kidane
Assistant Librarian (Data clean-up)

Visual Resources
Bridget Kinally
Head

Sue Chapman
Administrative Assistant

Caroline Checkley-Scott
Project Manager
Collections, Migration and
Accommodation

Iconographic Collections
William Schupbach
Curator

Iconographic Cataloguing Project
Caitriona Kennedy
Supervisor

Anna Kisby
Cataloguer (part-time)

Barbara Lasic
Cataloguer (part-time)

Jemma Street
Cataloguer (part-time)

**Medical Film and
Audio Collections**
Michael Clark
Head

Marie Williams
Film Researcher

Kathy Brookman
Assistant Film and Sound Researcher
(part-time, maternity cover)

Exhibitions in 2001–02

Medical Photographic Library

Catherine Draycott

Head

Julie Draycott

Biomedical Collections Coordinator

Jill Bailey

Picture Editor, Biomedical

Jennifer Whiting

Picture Editor and Researcher,

Biomedical

Michele Minto

Senior Picture Researcher

Julie Reza

Picture Researcher, Biomedical

Clive Coward

Picture Researcher

Miriam Gutierrez-Perez

Picture Researcher

Matilde Nardelli

Picture Researcher

Chris Carter

Senior Photographer

David Sayer

Photographer

Richard Everett

Digital Imaging Manager

Kate Darwin

Studio Assistant

Laurie Simmonds

Senior Scanner/Imaging Operator

Richard Ash

Scanner/Imaging Operator

Laura Hart

Scanner/Imaging Operator

Tyrone O'Dea

Scanner/Imaging Operator

Michael Gunn

Consultant, Micrographics

Reading room

'Positive Health: the Pioneer' Health Centre Peckham and beyond'

(14 January – 8 March, curated by Lesley Hall)

'The Proper Study of Mankind?

Untrodden Fields of Anthropology'

(11 March – 10 May, curated by David Brady)

'Forms and Abstractions –

Islamic Calligraphy in the

Wellcome Building'

(13 May – 12 July, curated by Nikolaj Serikoff)

'Bookbindings and their History'

(15 July – 27 September, curated by David Pearson)

'Condemned: Public Executions

in England'

(30 September – 8 November,

curated by Alice Ford-Smith)

'A Stitch in Time'

(11 November 2000 –

10 January 2003, curated by the

Preservation and Conservation

Department)

Modern medicine

reading room

The modern medicine reading

room carried a sequence

of smaller displays from the

Ephemera collection, curated

by Stephen Lowther.

Loans

Items from the Wellcome Library

were loaned to a range of

external exhibitions, including:

'Exposed: the Victorian Nude'

(Tate Britain, London; then on

tour: Haus der Kunst, Munich;

Brooklyn Museum of Art;

University Art Museum, Tokyo;

Prefectural Museum, Kobe)

'Sex vom Wissen und Wünschen'

(Deutsches Hygiene-Museum,

Dresden)

'Blood: Art, Power, Politics

and Pathology'

(mak.museum, Frankfurt)

'Wain's World'

(Museum of St Albans)

'Snoring and Sleep Apnea'

(Royal Society of Medicine, London)

'Dirty Linen'

(The Women's Library, London)

Patterns of use and statistical trends

Figure 1
History of Medicine Collections
visitor numbers, per year

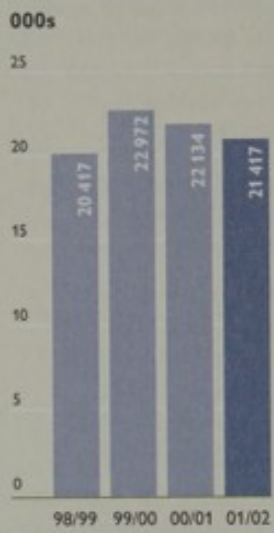


Figure 3
Information Service visitor
numbers, per year

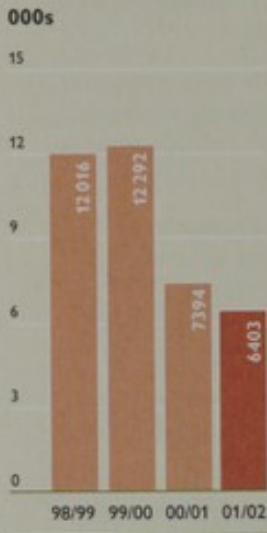


Figure 5
Enquiries received by Medical Film
and Audio Collections, per year

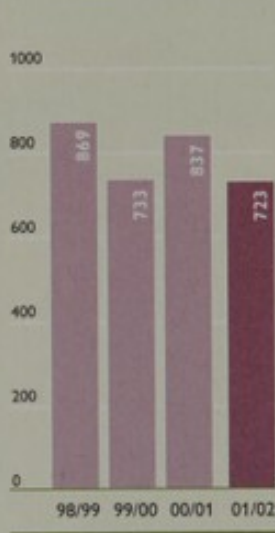


Figure 7
Images supplied by the Medical
Photographic Library, per year



Figure 2
History of Medicine Collections
detailed enquiries, per year



Figure 4
Reader Visits to the Poynter
Room (Rare Materials), per year

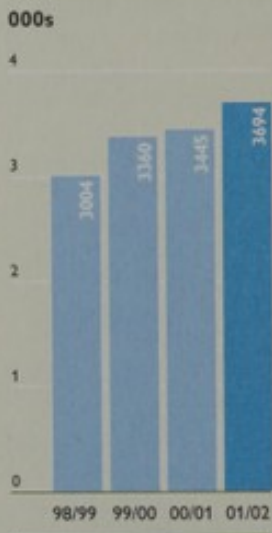
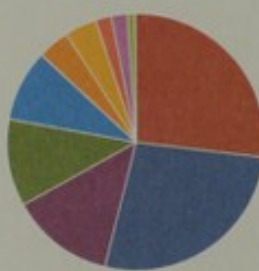


Figure 6
Users of the History of Medicine Collections and the
Information Service, by ten most-cited user categories



Category	%	No.
Undergraduate	27	7078
Academic	27	6787
Other	13	3242
Postgraduate	11	2689
Wellcome Trust	9	2412
Health professional	4	959
Health consumer	4	897
School student	2	557
Research scientist	2	416
Media researcher	1	354
Total		25 037

Noteworthy acquisitions during 2001–02

Acquisitions	01/02	00/01
Items acquired for General Collections	2870	2567
of which:		
purchases	2595	2303
gifts	275	287
New acquisitions, Early Printed Books	155	189
New acquisitions, Western Manuscripts	41	51
New acquisitions, Oriental Collections	260	283
New acquisitions, Iconographic Collections	57	87
New acquisitions, Information Service Collections	1729	
Special purchases	29	
Serials: total current titles	869	1010

Archives and Manuscripts
English Medical compendium,
c.1454. WMS.8004

Analytical Psychology Club:
records, 1920s–2002. SA/APC

MIND The Mental Health Charity:
records, 1946–90s. SA/MIN

Fordham, Michael (1905–1995),
psychiatrist: papers, incl corresp
with C G Jung. PP/FOR

Stewart, Alice (1906–2002),
epidemiologist: papers. PP/AMS

Crick, Francis (b.1916), Nobel
laureate: papers, c.1948–c.2000.
PP/CRI

Walton, John (b.1922), Baron
Walton of Detchant; neurologist
and former president of the
GMC: papers. PP/JNW

Tyrrell, David, former director of
the Common Cold Unit: papers,
1970s–90s. PP/TYR

Early Printed Books
Francesco Enrico Acerbi,
*Dottrina teorico-prattica del morbo
petecchiale*. Milan, 1822. An early
suggestion of the doctrine of
pathogenic micro-organisms.

An essay in favour of such public
remedies, as are usually distinguished
by the name of quack medicines...
By a country gentleman, formerly a
practitioner in the science of physic.
London, [1773?] No UK copy
located in ESTC.

Galen, *De ossibus*. Ferdinando
Balamio interprete. Rome, 1535.
Durling (Census) 1535.2.
With anatomical woodcuts.
First publication of this text in
any language. Durling records
only three copies of this edition,
two in Italy, one in Canada.

Joseph Baker Grindon,
*A compendium of the law of
coroners*. London, 1850. With
contemporary annotations by
a Rochdale coroner.

Benjamin James, *A treatise on
the management of teeth*. Boston
(Mass.), 1814. Austin 1044.
Garrison-Morton 3679.3.
First full-length American book
on dentistry.

Thomas Willis, *Diatribae duae
medico-philosophicae quarum prior
agit de fermentatione...altera de
febris*. 3 ed. London, 1662.
Wing W2834.

A collection of 17th- to 19th-
century German books on
mineral waters and spas, from
the Donaueschingen Library.

Oriental Collections

Arabic

Kitāb zubdūt al-ṭibb
An early and rare compendium
on general medicine transcribed
in Il-Khanid in Iran and dated
729/1319.

Japanese

Yōjo kun. A treatise on hygiene
and syphilis compiled by Ekiken
Kaibara. Block-printed book
published in Edo in 1713.

Kan koku fuikyū rui hō.
Classified remedies for medicinal
emergencies. Block-printed book
published in Edo in 1729.

Tassei zu setsu. Illustrated manual
of obstetrics composed by Taizo
Kondo. Block-printed book
published in Edo in 1858.

Korean

Myongdang tangin to. c. 18th
century. acupuncture chart of
prime significance due to the
grouping of the four veins of the
human figure with the 'Triple
burner view' or lateral aspect.
This is not normally found in such
charts. The horizontal format and
calligraphy are also unusual
although the paper and orthography
consistent with the Korean
provenance of the manuscript.

Ottoman

Four 18th-century miniatures
depicting the arterial and venous
systems, circumcision and
lithotomy.

Persian

Raushan-nameh. A useful medical
text arranged in seven sections
and transcribed in Kirman, Iran in
the 17th century.

Sinhalese

c. 18th-century palm-leaf
manuscript containing a rare set
of prescriptions for a variety of
diseases with a section devoted to
children's ailments followed by the
first sermon of the Buddha in Pali
with Sinhala paraphrase.

Visual Resources

A drawing of James Henry
Lambier, 'the American giant', who
used his height as a publicity stunt
to sell medicines in the 1830s.

An engraving of the Radcliffe
Asylum, Oxford, in 1840.

A set of lithographs of 'heroic'
remedies favoured by orthodox
medicine, c.1850.

Four coloured lithographs of the
abuses of medicine, published by
the British College of Health, 1852.

An early 20th-century etching
of a surgical operation, by Oskar
Gawell.

A Russian poster illustrating the
dangers of typhus, 1919.

A series of recent linocuts
and etchings illustrating newly
emergent diseases.

An oil painting by Rosemary
Carson, *The patients with their
fears waiting to see the doctor*, 1997.

A video of *Blinded*, the winner
of the Wellcome Award for
Biology and Medicine at the
2002 Learning on Screen
Production Awards.

Contact details and opening hours

History of Medicine Collections

Second floor
183 Euston Road, London NW1 2BE
Monday, Wednesday and Friday
9.45 – 17.00
Tuesday and Thursday 9.45 – 19.15
Saturday 9.45 – 13.00
Tel: +44 (0)20 7611 8582
Fax: +44 (0)20 7611 8369
E-mail: library@wellcome.ac.uk

Information Service

Current biomedical topics
Upper ground floor
183 Euston Road, London NW1 2BE
Monday to Friday 9.00 – 17.00
Saturday 9.00 – 13.00
Tel: +44 (0)20 7611 8722
Fax: +44 (0)20 7611 8726
E-mail: infoserv@wellcome.ac.uk

Medical Photographic Library

210 Euston Road, London NW1 2BE
Open by appointment
Monday to Friday 9.30 – 17.30
Tel: +44 (0)20 7611 8348
Fax: +44 (0)20 7611 8577
E-mail: photolib@wellcome.ac.uk

Medical Film and Audio Collections

210 Euston Road, London NW1 2BE
Open by appointment
Monday to Friday 9.15 – 17.30
Tel: +44 (0)20 7611 8596/97
Fax: +44 (0)20 7611 8765
E-mail: mfac@wellcome.ac.uk
Web: <http://library.wellcome.ac.uk>

Online catalogues

Library catalogue:
<http://catalogue.wellcome.ac.uk>
Image database:
<http://medphoto.wellcome.ac.uk>
Archives database:
<http://archives.wellcome.ac.uk>

Closures

The Wellcome Library closes on bank holiday weekends and between Christmas and the New Year. The History of Medicine Collections and the Information Service close, separately, for annual stocktaking for one week each during summer. Readers are urged to contact the Wellcome Library before making travel plans.

24-hour recorded information line

Tel: +44 (0)20 7611 7211

Public transport

Mainline stations:
Euston, King's Cross, St Pancras

London Underground:
Euston, Euston Square,
King's Cross and Warren Street

The Wellcome Trust is an independent biomedical research-funding charity, established under the will of Sir Henry Wellcome in 1936. It is funded from a private endowment which is managed with long-term stability and growth in mind. The Trust's mission is to foster and promote research with the aim of improving human and animal health.

Reflecting the profound impact today's research will have on society, the Wellcome Trust also seeks to raise awareness of the medical, ethical and social implications of research and promote dialogue between scientists, the public and policy makers.

Web www.wellcome.ac.uk

Design Sally Watts

Wellcome Trust Publishing Department

Photography David Sayer

Wellcome Trust Medical Photographic Library

The Wellcome Trust is a registered charity, no. 210183. Its sole Trustee is The Wellcome Trust Limited, a company registered in England, no. 2711000, whose registered office is 183 Euston Road, London NW1 2BE.

ML 2824.p2K06-2003/SW



