

Annual report : 106th (1926) / Seamen's Hospital Society "Dreadnought" for sick and injured sailors.

Contributors

Seamen's Hospital Society "Dreadnought" for Sick and Injured Sailors.

Publication/Creation

[London] : [Seamen's Hospital?], 1926

Persistent URL

<https://wellcomecollection.org/works/ydzaf7z3>

License and attribution

This work has been identified as being free of known restrictions under copyright law, including all related and neighbouring rights and is being made available under the Creative Commons, Public Domain Mark.

You can copy, modify, distribute and perform the work, even for commercial purposes, without asking permission.



Wellcome Collection
183 Euston Road
London NW1 2BE UK
T +44 (0)20 7611 8722
E library@wellcomecollection.org
<https://wellcomecollection.org>

d. AS. 41

Don 11778

Separate
series
up bound

ABRIDGED REPORT.

THE

Seamen's Hospital Society,

Incorporated by Act of Parliament, 3^d Gul. IV., Cap. IX.

"DREADNOUGHT,"
GREENWICH.

ESTABLISHED 1821.

FOR SICK AND INJURED SAILORS,
SUPPORTED BY VOLUNTARY CONTRIBUTIONS.

ONE HUNDRED AND SIXTH ANNUAL REPORT

From January 1st to December 31st, 1926.

London :

PRINTED BY E. G. BERRYMAN & SONS, LTD.,
BLACKHEATH ROAD, GREENWICH, S.E.10

1927.



22501731622



ABRIDGED REPORT.

THE
SEAMEN'S HOSPITAL SOCIETY,

Incorporated by Act of Parliament, 3^d Gul. IV., Cap. IX.

"DREADNOUGHT,"
GREENWICH.

ESTABLISHED 1821.

FOR SICK AND INJURED SAILORS,
SUPPORTED BY VOLUNTARY CONTRIBUTIONS.

ONE HUNDRED AND SIXTH ANNUAL REPORT

From January 1st to December 31st, 1926.

London:

PRINTED BY E. G. BERRYMAN & SONS, LTD.,
BLACKHEATH ROAD, GREENWICH, S.E.10.

1927.

CALENDAR FOR 1927-1928.

1927. MARCH.

Wed. 9. Committee Meeting.

APRIL.

Wed. 13. Committee Meeting.
Quarterly Court.

MAY.

Wed. 11. Committee Meeting.

JUNE.

Wed. 8. Committee Meeting.

JULY.

Wed. 13. Committee Meeting.
Quarterly Court.

AUGUST.

Wed. 10. Committee Meeting.

1927. SEPTEMBER.

Wed. 14. Committee Meeting.

OCTOBER.

Wed. 12. Committee Meeting.
Quarterly Court.

NOVEMBER.

Wed. 9. Committee Meeting.

DECEMBER.

Wed. 14. Committee Meeting.

1928. JANUARY.

Wed. 11. Committee Meeting.
Quarterly Court.

FEBRUARY.

Wed. 8. Committee Meeting.

The Meetings of the Committee are held at the Chamber of Shipping, 26, St. Mary Axe, E.C., at 4 p.m.

Quarterly Courts are held immediately after the meetings of the Committee. The Annual Court will be held at the "Hotel Cecil," on Monday, 21st February, 1927, under the presidency of H.R.H. PRINCE GEORGE.

Seamen's Hospital Society.

("Dreadnought.")

Form for Remittance of Subscription or Donation
to the Hospital Funds.

To the Secretary,

Seamen's Hospital, Greenwich.

I enclose herewith cheque for £ _____ as a

Subscription (or) Donation.

Name _____

Address _____

Date _____

NOTE.—You will greatly facilitate the Collection of your Subscription if you will kindly fill in this Order as your Bankers, and send it to the Secretary, Seamen's Hospital Society, Greenwich, S.E.

Cheques to be crossed "Williams Deacon's Bank," or "The Westminster Bank, Ltd."

M.T.

NOTE: This is a watermark and not a stamp.

NOTE: This is a watermark and not a stamp.

NOTE: This is a watermark and not a stamp.



2227th A

WOMAN

2227th A

NOTE: This is a watermark and not a stamp.

NOTE: This is a watermark and not a stamp.

of

1891

ORDER OF THE

OFFICERS OF THE INSTITUTION

For 1927-1928.

Patron and Patroness.

- V.P., 1890. }
 P., 1910. } HIS MOST GRACIOUS MAJESTY THE KING.
 1910. } HER MOST GRACIOUS MAJESTY THE QUEEN.

Vice-Patron.

1913. H.R.H. THE PRINCE OF WALES, K.G.

President.

1921. CAPTAIN HIS ROYAL HIGHNESS THE
 DUKE OF YORK, K.G., K.T., G.C.V.O., R.N.

Past President.

- P., 1906. }
 P.P., 1911. } HIS GRACE THE DUKE OF MARLBOROUGH,
 K.G.

Vice-Presidents.

1896. THE RIGHT HON. VISCOUNT COWDRAY.
 1902. THE RIGHT HON. AND RIGHT REV. THE LORD BISHOP
 OF LONDON, K.C.V.O.
 1902. SIR JOHN CRAGGS, M.V.O.
 1907. THE MOST HON. THE MARQUIS OF SALISBURY, K.G.
 1907. THE LORD HUGH CECIL, M.P.
 1908. DANIEL DANIELSSON, Esq.
 1912. SIR WILLIAM BENNETT, K.C.V.O., F.R.C.S.
 1912. THE RIGHT HON. SIR AUSTEN CHAMBERLAIN, K.G.
 C., 1900. }
 V.P., 1913. } T. IRVINE ROWELL, Esq., C.M.G., M.D.
 C., 1902. }
 V.P., 1913. } ADMIRAL OF THE FLEET THE RIGHT HON. SIR
 EDWARD H. SEYMOUR, G.C.B., O.M., G.C.V.O., LL.D.
 1915. THE RIGHT HON. VISCOUNT DEVONPORT.
 1916. MAJOR-GENERAL F. L. LESSARD, C.B.
 C., 1909. }
 V.P., 1920. } GENERAL THE HON. SIR REGINALD TALBOT, K.C.B.
 1921. THE RIGHT HON. VISCOUNT INCHCAPE, G.C.M.G.,
 G.C.S.I., K.C.I.E.
 1923. SIR NORMAN HILL, BT. (*Chairman of the Governing Body
 of the Seamen's Pension Fund*).
 1924. THE RIGHT HON. LORD SOUTHBOROUGH, G.C.B.,
 G.C.M.G., G.C.V.O., K.C.S.I.
 1926. P. G. SINGHANEE, Esq.

Trustees.

- C., 1896. }
 T., 1907. } COMMANDER GEORGE HODGKINSON, R.N.
 C., 1914. }
 T., 1922. } J. CYRIL NAIRNE, Esq.
 C., 1924. }
 T., 1926. } CAPTAIN A. M. HUGHES.
 C., 1925. }
 T., 1926. } R. T. GARRETT, Esq.

AND THE OFFICIAL TRUSTEES OF CHARITABLE FUNDS.

Treasurer.

1903. COLONEL SIR ROBERT WILLIAMS, Bt.
20, Birchlin Lane, London, E.C.3.

Committee of Management.

- | | |
|--|---|
| C., 1905. } | CAPTAIN SIR ARTHUR W. CLARKE, K.B.E.
(<i>Elder Brother of Trinity House</i>), <i>Chairman</i> . |
| Dep. Ch., 1915. } | |
| Ch., 1922. } | |
| C., 1906. } | CAPTAIN SIR ION HAMILTON BENN, Bt. C.B., D.S.O.,
R.N.V.R., <i>Deputy Chairman</i> . |
| Dep. Ch., 1923. } | |
| 1924. VICE-ADMIRAL THE HON. SIR
ALGERNON BOYLE, K.C.B.,
C.M.G., M.V.O. | 1923. VICE-ADMIRAL GEORGE R.
MANSELL, C.B.E., M.V.O.
(<i>Deputy Master of Trinity
House</i>). |
| 1914. C. J. BRIGHTMAN, Esq., O.B.E. | 1914. J. CYRIL NAIRNE, Esq. |
| 1920. SIR BENJAMIN CHAVE, K.B.E. | 1924. SIR FRANKE NOTLEY, K.B.E.,
R.D., R.N.R. |
| 1911. ADMIRAL SIR FREDERIC W.
FISHER, K.C.V.O. | 1898. SIR HERBERT READ, K.C.M.G.,
C.B. (<i>Colonial Office</i>). |
| 1925. R. T. GARRETT, Esq. | 1926. ADMIRAL SIR EDMOND SLADE,
K.C.I.E., K.C.V.O. |
| 1912. THE RIGHT HON. EARL GRAN-
VILLE, G.C.V.O. | 1926. A.W. SMALLWOOD, Esq., C.B.E.
(<i>Director of Greenwich Hos-
pital</i>). |
| 1896. COMMANDER GEORGE HODG-
KINSON, R.N. | 1914. REV. F. J. TACKLEY, M.A.
(<i>Vicar of Greenwich</i>). |
| 1923. ADMIRAL SIR GEORGE P. W.
HOPE, K.C.B., K.C.M.G. | 1926. VICE-ADMIRAL SIR RICHARD
WEBB, K.C.M.G., C.B. (<i>Presi-
dent of Royal Naval College</i>). |
| 1924. CAPTAIN A. M. HUGHES. | 1924. COL. F. H. D. C. WHITMORE,
C.M.G., D.S.O. |
| 1916. ADMIRAL OF THE FLEET SIR
HENRY JACKSON, G.C.B.,
K.C.V.O., F.R.S., D.Sc. | 1909. SIR JOHN WIMBLE, K.B.E. |
| 1916. REAR-ADMIRAL E. P. E.
JERVOISE, C.B.E. | |
| 1912. C. F. LEACH, Esq. | |
| 1909. E. LYDEKKER, Esq. | |
| 1926. W. J. McALISTER, Esq. (<i>Chair-
man, General Steam Navigation
Company</i>). | |

Finance Sub-Committee.

J. CYRIL NAIRNE, Esq., *Chairman*.
CAPTAIN SIR ION HAMILTON BENN, Bt., C.B., D.S.O., R.N.V.R., *ex-officio*.
VICE-ADMIRAL THE HON. SIR ALGERNON BOYLE, K.C.B., C.M.G., M.V.O.
CAPTAIN SIR ARTHUR W. CLARKE, K.B.E., *ex-officio*.
R. T. GARRETT, Esq.
CAPTAIN A. M. HUGHES.

Honorary Counsel.

1877. JOHN LYDEKKER, Esq.
Barrister-at-Law.

Solicitor.

1921. PERCEVAL R. A. BAKER, Esq.,
3, Salter's Hall Court, E.C.

Auditors.

1909. Messrs. PRICE, WATERHOUSE & Co.,
Chartered Accountants,
3, Frederick's Place, E.C.

Bankers.

1821. WILLIAMS DEACON'S BANK, LIMITED, and 1908. WESTMINSTER BANK, LTD.
20, Birchlin Lane, London, E.C. Greenwich.

Subscriptions and Donations may be sent to either Bank.

Secretary.

1887. SIR JAMES MICHELLI, C.M.G.

Assistant Secretary.

1919. R. E. V. BAX, Esq., M.A., Oxon., Barrister-at-Law.

Secretary to the Shipping Department.

Accountant, 1913. }
Sec. Ship. Dept., 1924. } ALBERT A. PAYNE, Esq.

Accountant.

1923. L. F. LAND, Esq.

Steward.

1923. F. A. LYON, Esq., B.A., Oxon.

Dreadnought Hospital, Greenwich.**Consulting Physicians.**

Physician, 1905. }
Consult. Physician, 1917. } SIR DYCE DUCKWORTH, Bt., M.D., LL.D.,
F.R.C.P.
Physician, 1905. }
Consult. Physician, 1919. } SIR JOHN ROSE BRADFORD, K.C.M.G., C.B.,
F.R.S., M.D., P.R.C.P.

Consulting Surgeons.

Surgeon, 1905. }
Consult. Surg., 1912. } SIR WILLIAM BENNETT, K.C.V.O., F.R.C.S.
Surgeon, 1896. }
Consult. Surg., 1919. } W. TURNER, Esq., M.S. (Lond.), F.R.C.S.
Assist. Surg., 1905. }
Surgeon, 1911. } E. ROCK CARLING, Esq., F.R.C.S.
Consult. Surg., 1919. }
Assist. Surg., 1907. }
Surgeon, 1912. } C. C. CHOYCE, Esq., C.M.G., C.B.E., F.R.C.S.
Consult. Surg., 1919. }
Surgeon, 1902. }
Consult. Surg., 1921. } LAWRIE H. MCGAVIN, Esq., C.B.E., F.R.C.S.

Consulting Dermatologist.

Asst. Der. 1912-1918. }
Consult. Der. 1924. } HENRY MACCORMAC, Esq., C.B.E., M.D., F.R.C.P.

Consulting Ophthalmic Surgeon.

Surgeon, 1899. }
Consult. Surg., 1919. } L. VERNON CARGILL, Esq., F.R.C.S.

Consulting Surgeon for Diseases of Throat, Nose and Ear.

Surgeon, 1909. }
Consult. Surg., 1920. } RICHARD LAKE, Esq., F.R.C.S.

Physicians.

Assist. Phy., 1914. }
Phy., 1917. } C. E. SUNDELL, Esq., M.D., M.R.C.P.
1925. J. CONWAY DAVIES, Esq., M.B., M.R.C.P.
1926. J. PURDON MARTIN, Esq., M.D., M.R.C.P.

Surgeons.

Assist. Surg.,	1912.	}	P. P. COLE, Esq., F.R.C.S.
Surgeon,	1919.		
Assist. Surg.,	1912.	}	CECIL ROWNTREE, Esq., F.R.C.S.
Surgeon,	1919.		
Assist. Surg.,	1920.	}	E. T. C. MILLIGAN, Esq., O.B.E., F.R.C.S.
Surgeon,	1921.		

Ophthalmic Surgeon.

Assist. Oph. Surg.,	1907.	}	R. E. BICKERTON, Esq., D.S.O., M.B., B.Ch.
Oph. Surg.,	1919.		

Surgeon with Charge of Out-Patients.

1925. R. OGIER WARD, Esq., D.S.O., M.C., M.Ch., F.R.C.S.

Neurologist.

Assist. Phy.,	1910.	}	GORDON M. HOLMES, Esq., C.M.G., M.D., F.R.C.P.
Neurologist,	1914.		

Surgeon for Diseases of Throat, Nose and Ear.

1923. F. COURTENAY-MASON, Esq., M.S., F.R.C.S.

Physician-in-Charge of the Electrical Department.

1920. MARTIN BERRY, Esq., M.D.

Dental Surgeon.

1913. J. BRAMLEY BALL, Esq., M.R.C.S., L.R.C.P., L.D.S.

Directors of Pathology.

Physician,	1899.	}	Professor R. TANNER HEWLETT, M.D., F.R.C.P., D.P.H.
Director of Pathology,	1908.		
Pathologist,	1910.	}	ARTHUR DAVIES, Esq., M.D., M.R.C.P.
Assist. Dir.,	1920.		
Co. Dir.,	1926.		

Anæsthetists.

1917.	R. DONNELLAN, Esq., L.R.C.P. & S.
1920.	E. S. ROWBOTHAM, Esq., M.R.C.S., L.R.C.P.
1925.	F. P. de CAUX, Esq., M.R.C.S., L.R.C.P.

Medical Superintendent.

1926. RICHMOND MCINTOSH, Esq., M.B., Ch.B., Glas.

Two House Physicians.**Two House Surgeons.****Matron.**

1925. Miss E. J. WILLIAMS, A.R.R.C.

Chaplain.

1913. Duties performed by the Chaplains of the Missions to Seamen,
Port of London.

Albert Dock Hospital.

Consulting Physician.

Assist. Phy.,	1906.	}	C. W. DANIELS, Esq., M.B., F.R.C.P.
Physician,	1912.		
Consult. Phy.,	1920.		

Consulting Surgeon.

Surgeon,	1914.	}	COL. J. J. PRATT, I.M.S., F.R.C.S.
Consult. Surg.,	1921.		

Physicians.

Assist. Phy.,	1912.	}	G. C. LOW, Esq., M.D., F.R.C.P.
Physician,	1918.		
Assist. Phy.,	1918.	}	PHILIP MANSON-BAHR, Esq., D.S.O., M.D., F.R.C.P., D.T.M. & H.
Physician,	1921.		

Surgeons.

1921. H. ERNEST GRIFFITHS, Esq., M.S., F.R.C.S.
 1921. T. POMFRET KILNER, Esq., F.R.C.S.

Dental Surgeon.

1915. T. H. VAUGHAN, Esq., L.D.S.

Pathologist and Hon. Medical Superintendent.

Path.,	1920.	}	H. M. HANSHELL, Esq., D.S.C., M.R.C.S., L.R.C.P., D.T.M. & H.
Hon. Med. Supt.,	1924.		

Anaesthetist.

1922. C. LANGTON HEWER, Esq., M.B., B.S.

Two House Surgeons.

Matron.

1924. Miss E. ALDERMAN, A.R.R.C.

Chaplain.

1917. Duties performed by the Chaplains of the Missions to Seamen,
 Port of London.

East [and West India Docks Dispensary.

Medical Officer.

1900. W. H. F. OXLEY, Esq., M.R.C.S., L.R.C.P.

Hospital for Tropical Diseases, Endsleigh Gardens.

Consulting Physician.

1920. C. W. DANIELS, Esq., M.B., F.R.C.P.

Consulting Surgeon.

Surgeon, 1919. }
Consult. Surg., 1924. } COL. J. J. PRATT, I.M.S., F.R.C.S.

Consulting Ophthalmic Surgeon.

Surgeon 1919. }
Consult. Surg. 1925. } COL. R. H. ELLIOT, I.M.S., M.D., F.R.C.S.

Physicians.

1919. G. C. LOW, Esq., M.D., F.R.C.P.
Assist. Phy., 1919. }
Physician, 1921. } PHILIP MANSON-BAHR, Esq., D.S.O., M.D.,
F.R.C.P., D.T.M. & H.

Extra Physician for Clinical Research.

1921. SIR LEONARD ROGERS, C.I.E., M.D., F.R.S.

Hon. Physician as representing the Colonial Office.

1921. SIR WILLIAM PROUT, C.M.G., O.B.E., M.B., C.M.

Surgeons.

1924. SIR THOMAS CAREY EVANS, M.C., F.R.C.S.
1924. T. POMFRET KILNER, Esq., F.R.C.S.

Physician for Skin Diseases.

1919. J. M. H. MACLEOD, Esq., F.R.C.P.

Physician in Charge of Electrical Department.

1921. MARTIN BERRY, Esq., M.D.

Assistant Radiologist.

1926. DUNCAN WHITE, Esq., M.B., Ch.B.

Dental Surgeon.

1919. T. H. VAUGHAN, Esq., L.D.S.

Anaesthetist.

1925. C. LANGTON HEWER, Esq., M.B., B.S.

Medical Superintendent.

1925. W. E. COOKE, Esq., F.R.C.S.I., D.P.H.

One House Surgeon.

Hon. Chaplain.

1921. Rev. E. L. METCALFE, M.A.

Resident Secretary.

1926. CHARLES E. H. LLOYD, Esq., M.A., Oxon., Barrister-at-Law.

Matron.

1926. Miss C. E. HAYDEN.

Tilbury Hospital.

Consulting Surgeons.

1896. T. OPENSHAW, Esq., C.B., C.M.G., M.S., F.R.C.S.
 1926. CHAS. J. PINCHING, Esq., O.B.E., M.B., B.Ch., M.R.C.S.,
 L.R.C.P.

Consulting Dental Surgeon.

1896. G. J. LUCAS, Esq., L.D.S., R.C.S.

Medical and Surgical Staff.

1904. S. FLOYD, Esq., M.D.
 1920. L. G. JACOB, Esq., M.B., B.Ch.
 1923. W. ALLINGHAM, Esq., M.R.C.S., L.R.C.P.
 1923. C. D. FAULKNER, Esq., M.R.C.S., L.R.C.P.
 1926. F. F. WHEELER, Esq., M.R.C.S., L.R.C.P.

Ophthalmic Surgeon.

1924. R. H. BALFOUR BARROW, Esq., M.B., Ch.B.

Visiting Tuberculosis Officer.

1927. W. T. G. BOUL, Esq., M.D., M.B., Ch.B., D.P.H. (Lond.)

Dental Surgeon.

1925. W. S. ROSE, Esq., L.D.S., R.C.S.

Resident Medical Officer.

- Dreadnought, 1914. } J. J. S. ROWE, Esq., L.M.S.S.A., D.T.M., B.Sc.
 Tilbury, 1924. }

One House Surgeon.

Hon. Chaplain.

1924. Rev. W. C. BOWN.

Matron.

1924. Miss M. K. IRELAND, A.R.R.C.

Angas Convalescent Home, Cudham.

Medical Officer.

1925. W. J. SYMES, Esq., M.R.C.S., L.R.C.P.

Matron.

1918. Mrs. T. H. GILBERT.

King George's Sanatorium for Sailors, Bramshott, Hampshire.

Physician.

1922. C. E. SUNDELL, Esq., M.D., M.R.C.P.

Surgeons.

1921. GILBERT SMITH, Esq., M.D., F.R.C.S.

1922. SIR HENRY GAUVAIN, M.D., M.C.

Dental Surgeon.

1921. H. W. TAYLOR, Esq., L.D.S.R.C.S.

Medical Superintendent.

1922. J. E. WOOD, Esq., M.R.C.S., L.R.C.P.

Assistant Medical Officer.

1926. P. GULLY, Esq., M.R.C.S., L.R.C.P.

Chaplain.

1923. Rev. H. A. BOWLES, M.A.

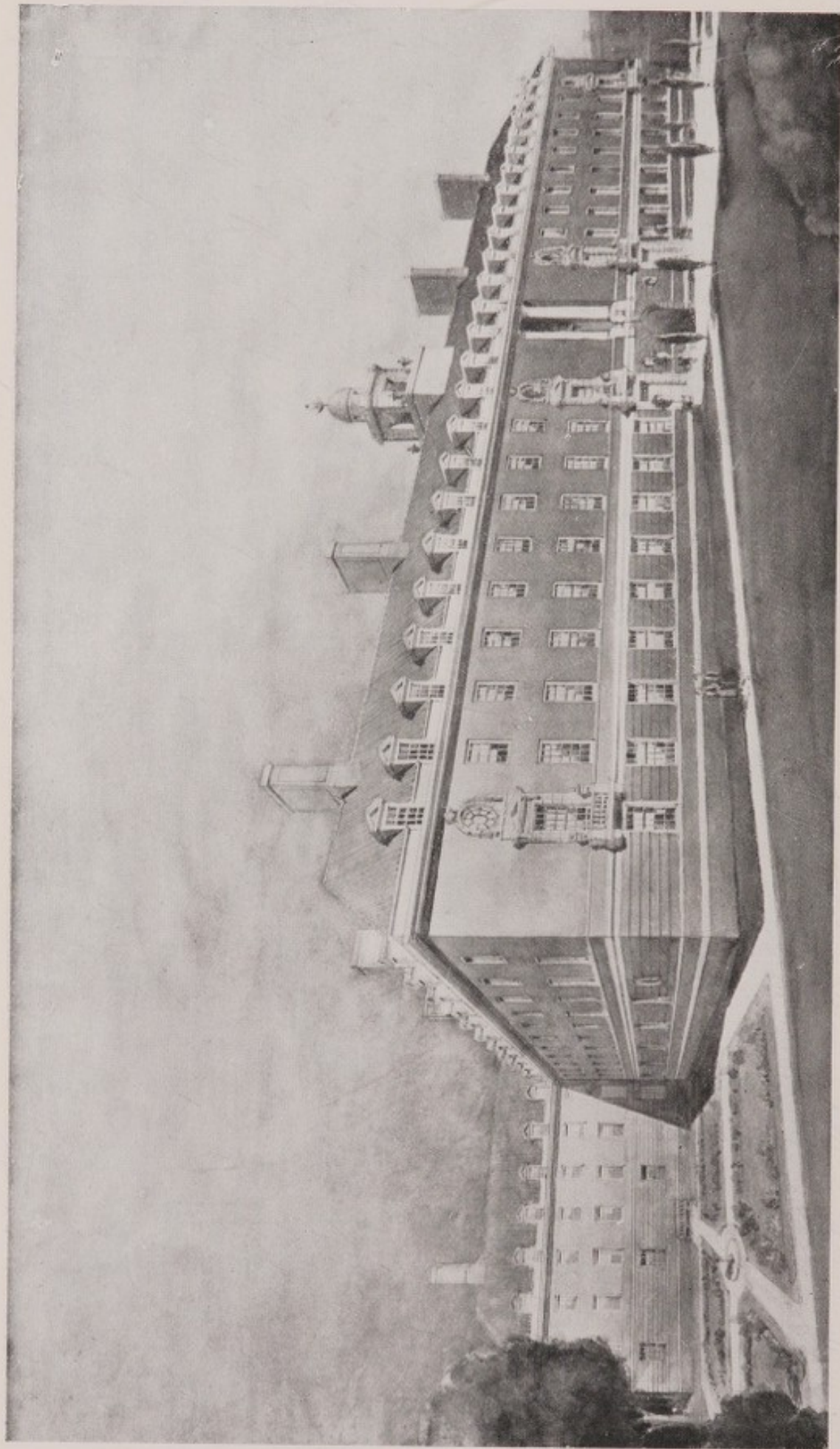
Resident Secretary.

1925. Paymaster-Captain HAROLD J. D. SPRIGGS, O.B.E., R.N.

Matron.

1926. Miss MARY RUCK, R.R.C.





THE DEVONPORT NURSES' HOME, DREADNOUGHT HOSPITAL, GREENWICH

Seamen's Hospital Society.

ANNUAL REPORT FOR THE YEAR 1926.

A VERY successful year, fraught with good omens for the future, in that the foundation stone of the new Nurses' Home was laid on the 23rd June.

The Home is on the site provided by the Admiralty, in proximity to the Hospital at Greenwich, and the ceremony was performed by the Rt. Hon. Viscount Devonport. A large number of Governors and supporters of the Society were present, and a delightful day lent hope and brightness to the occasion.

As mentioned in the last Report, the Home will afford accommodation for about 120 members of the nursing and domestic staff.

In consequence of difficulties of production the work did not progress as rapidly as was expected, but by the end of the year the foundations were in and the building level with the first floor.

The Pathological block, lying to the south-west of the site, being smaller, has made more rapid progress, and is nearing completion.

Until the Nurses' Home is available it is not possible to proceed with the Officers' unit, which will be in the part of the old building vacated by the Nurses, but it is the desire of the Society to see that improved accommodation for Officers of the Merchant Service is provided, affording the amenities of sitting room, etc., for these men who, by their efforts when at sea, help to interest the public in the well-being of the mariner, and so augment the funds of the Society.

Where possible the remodelling of the old Hospital is being proceeded with ; the Architect is preparing plans for this work, which has been so long needed.

Death has deprived the Society of several of those who have been closely associated with the work of the Corporation for many years.

Admiral Sir Robert Harris, K.C.B., K.C.M.G., a member of the Board from 1904 to 1913, when he was elected a Vice-President of the Corporation, died on the 25th August. Though there are few now associated with the Society who remember him, he rendered much service to the Charity in his day.

With sorrow the Committee report the death of another Vice-President, Captain Sir Herbert Acton Blake, K.C.M.G., K.C.V.O., Deputy Master of the Trinity House, who was also one of the Trustees of the Seamen's Hospital Society, and a true friend of the sailor. When convalescing after an illness in the early part of the year Sir Acton Blake went for a sea voyage, which it was hoped would restore him to health, and at sea, where he had spent so much of his life, he died, and was buried. His loss is deeply felt by all those who had the privilege of serving with him and knowing him.

The Committee record with deep regret the death of Sir Charles Stansfield, C.B., Director of Greenwich Hospital, who joined the Board of Management of the Seamen's Hospital Society in 1909, and who was a regular attendant at its meetings. He died on the 29th of May.

Sir James Cantlie, K.B.E., F.R.C.S., the well-known Surgeon attached to the Albert Dock Hospital and the Hospital for Tropical Diseases, died on the 28th May, after a service extending over a period of twenty-seven years.

New members : Mr. A. W. Smallwood, C.B.E., Director of Greenwich Hospital, and Mr. W. J. McAlister, Chairman of the General Steam Navigation Company, have joined the Board since the last Report was issued.

The various Branches of the Society have all done good work during the year. The last established, the Hospital at Tilbury, has proved the great need that existed for some form of medical and surgical aid for the many workers on that part of the river's banks. The little Cottage Hospital that provided seventeen beds a few years ago now has accommodation for sixty beds, and this number is frequently exceeded by the setting up of extra beds and cots to meet the need of urgent cases.

The Albert Dock Hospital, the first established branch of the Corporation, continues its work in that busy centre, giving succour to the thousands who seek aid therein and rendering valuable assistance to the dwellers in Dockland.

The Hospital for Tropical Diseases continues to fulfil its mission, and at certain times of the year its resources are strained to their utmost.

King George's Sanatorium for Sailors at Bramshott has been well occupied throughout the year, and the same may be said of the Angas Convalescent Home at Cudham.

In consequence of the advance in the method of treatment of patients suffering from Tuberculosis, it has been found necessary to increase the Nursing Staff at Bramshott. The accommodation in the old building not being adequate to meet the increased requirements, a small house in proximity to the administrative buildings has, on the advice of Mr. Stanley Hamp, the Architect, been erected on what is known as the Tibbenham principle. This provides a picturesque cottage with accommodation for eleven Nurses,

including a sitting room and the modern amenities of a Nurses' Home. The new Home was opened by Lady Clarke on the 6th November, and it has proved a great comfort to those members of the Nursing Staff serving at Bramshott.

It was stated in the last Annual Report that the necessity for providing a Light unit at King George's Sanatorium for Sailors had been pressed upon the Board by Sir Henry Gauvain and the Medical Staff at Bramshott, and that a special fund was being raised to defray the cost thereof. In response to an appeal, a sum of £2,500 has been received. A considerable portion of this amount has been given by officers and men of the Fleet, the remainder coming from other donors, individuals and companies. It is now intended to construct a new ward of ten beds, to adapt another ward for the electrical apparatus, and to provide the electricity and additional lights.

This new method of treatment will be a great advantage to patients, especially during the dark days of winter. The work is not yet put in hand, but tenders are being invited on a scheme suggested by Sir Henry Gauvain.

At the various establishments of the Society over 28,000 patients have been treated, and the response made by the public to this effort on behalf of the Mariner has been generous.

Sufficient income has been subscribed to meet the needs of the six establishments. This is recognition of the courage and labour of the Mariner, and the Board feel that it is also evidence of the confidence felt by the public in the work that the Society is doing for the community. It would, however, be possible for the Seamen's Hospital Society to extend its assistance even further, and if additional aid were available a still larger number of sick and suffering might receive

treatment and relief in the various Hospitals of the Society. There is no doubt that much more help could be rendered in the Tilbury district if another pavilion were erected.

During the year the following patients have been treated :—

	<i>In- Patients.</i>	<i>Out- Patients.</i>	<i>Total.</i>
Dreadnought Hospital ..	2,784	10,948	13,732
Albert Dock Hospital ..	700	7,159	7,859
Hospital for Tropical Diseases	603	..	603
Tilbury Hospital	808	4,429	5,237
King George's Sanatorium	99	..	99
Angas Convalescent Home	387	..	387
East India Dock Dispensary	347	347
Total ..	<u>5,381</u>	<u>22,883</u>	<u>28,264</u>

In conclusion, the Board of Management desire to express their gratitude to the many supporters whose generous aid has enabled them to maintain the various establishments of the Seamen's Hospital Society in their present efficient and satisfactory condition, and to thank the administrative, medical and nursing staffs of all the establishments of the Society for their zealous work in the interests of the Sailor.

A. W. CLARKE,

Chairman.

CHAMBER OF SHIPPING,

ST. MARY AXE,

IN THE CITY OF LONDON.

Wednesday, 9th February, 1927.

EVENTS OF THE YEAR 1926.

Influenza robbed the Society of the advantage of the presence of H.R.H. the Duke of York at the last Annual Meeting. Mr. Neville Chamberlain, the Minister of Health, was good enough at the last moment to occupy the chair, and a very successful meeting was held, there being about 800 Governors of the Charity present.

The Dreadnought was favoured by a visit from the Duke of Montrose on the 1st December, when His Grace was good enough to unveil the Tablet which has been erected to record the generous assistance rendered to the Seamen's Hospital Society by King George's Fund for Sailors during the nine years of the Fund's existence. A Ward in the Hospital has been named "King George's Fund for Sailors Ward."

A portrait of the late Sir Sydney Russell Wells, M.P., M.D., B.Sc., F.R.C.P., the distinguished Physician who served on the Honorary Medical Staff of the Dreadnought Hospital from 1906 until his death in 1924, was unveiled by Sir Humphry Rolleston, Bart., K.C.B., on the 4th of May.

The Seamen's Hospital Aid Committee have completed the endowment of a sixth bed in the Dreadnought Hospital. The tablet over this bed was unveiled by Sir George Hume, M.P., on Saturday, the 30th October, when there was a large attendance, and much appreciation was expressed in regard to the assistance afforded by the Aid Committee.

On 5th September, by favour of the British Broadcasting Company, the Chairman, Sir Arthur Clarke, broadcasted an appeal for the Dreadnought, which has started a fund for the endowment of a "Wireless" Bed, the total received now amounting to £325.

In order to make known what the Society is doing for the welfare of the Sailor on the great Indian trade routes, and also to acquaint those who suffer from tropical diseases of the facilities afforded by the Society, Mr. F. A. Lyon, a member of the secretarial staff, is in India at the present time.

DREADNOUGHT HOSPITAL.

Dr. J. Purdon Martin, M.D., M.R.C.P., has been elected Physician in the place of the late Dr. H. Ridley Prentice.

Dr. Richmond McIntosh, M.B., Ch.B., Glasgow, has been appointed Medical Superintendent.

The Nursing at Greenwich has been strengthened by the establishment of a Preliminary Training School for Probationers, and candidates for the Nursing Staff are now admitted for a period of six weeks, during which time observation can be made as to their fitness to enter for the complete training required by the General Nursing Council.

There has also been attached to the Dreadnought Hospital a Private Staff of Nurses who have completed their training. Nurses trained at the Dreadnought may therefore be engaged for outside cases by doctors and others needing their services.

The Linen League at the Hospital is doing excellent work.

ALBERT DOCK HOSPITAL.

As mentioned in the Report this Hospital has continued to work at high pressure during the year that has just closed, the generous assistance afforded this branch being evidence of its usefulness in the neighbourhood.

The East Ham Palace Entertainments, organised by Mr. R. W. Vagnolini and his Committee, took place on the 2nd and 3rd December, a sum of £680 being raised for the benefit of the Albert Dock Hospital—a most satisfactory result.

HOSPITAL FOR TROPICAL DISEASES.

Miss C. Graham Knight, M.B.E., the oldest member of the Nursing Staff, and Matron of this branch of the Society, resigned in May after a service of thirty years. It was with deep regret that the Board were constrained to accept her retirement on pension.

Miss C. E. Hayden, who has served as Sister at the Dreadnought Hospital, has been appointed in her stead.

The Board have, on the recommendation of the Medical Council, appointed Dr. Duncan White, M.B., Ch.B., Assistant Radiologist at this Branch.

The office of Resident Secretary has been filled by the appointment of Mr. C. E. H. Lloyd.

A bed in this Hospital has been endowed by residents in Ceylon in recognition of the part that the Sailor takes in the seaborne trade of the island. The tablet recording this generous gift was unveiled by the Hon. W. G. A. Ormsby-Gore on Friday, the 25th June.

TILBURY HOSPITAL.

Miss Elsie Mackay has very kindly taken an interest in the welfare of this branch, and has visited the Hospital on several occasions.

So rapid has been the growth of this Hospital, and so great the increase in the number of patients, that it has been thought advisable to make provision for the future, and some adjoining land has been acquired by the Society, together with a house thereon. This will facilitate the work of the Hospital pending the erection of a new pavilion when funds will permit, and provide a few additional beds.

The Honorary Medical Staff has been added to by the appointment of Mr. C. J. Pinching, O.B.E., M.B., B.Ch., as one of the Visiting Surgeons.

Dr. W. T. G. Boul, M.B., Ch.B., M.D., D.P.H., Tuberculosis Officer for the County of Essex, has also been appointed Visiting Tuberculosis Officer.

The General Nursing Council have seen fit to recognise the Tilbury Hospital as a complete training school for General Nurses.

The excellent and hardworking Linen League at Tilbury has generously provided the linen and bedding, not only for the existing beds, but also for the new ones which will be wholly equipped by them.

The Wireless for Hospitals Fund have extended their generosity to this last established branch of the Seamen's Hospital Society, and on the 13th December Dame Caroline Bridgeman visited Tilbury Hospital and handed over the installation on behalf of the Wireless Fund. It is needless to say what a boon this is to the inmates of that somewhat isolated institution.

KING GEORGE'S SANATORIUM FOR SAILORS.

Miss A. M. Hobling, who served as Matron at this branch of the Society, resigned in the latter part of the year. She has been succeeded by Miss M. Ruck, R.R.C., who had served as Sister at the Dreadnought Hospital for a considerable period.

ANGAS CONVALESCENT HOME.

During the year still further improvements have been effected at the Home in the form of a central heating installation, the cost of which has been kindly defrayed by the generous founder—Mrs. Angas.

A list of benefactions will be found in another portion of this report. It is impossible to mention all those to whom the Society is indebted for help and services rendered, but mention may be made of the Seamen's Hospital Aid Committee and the Hospitals Welfare Society.

The Committee express their gratitude also to the great Funds who have again given substantial aid, namely :—

King Edward's Hospital Fund for London.

King George's Fund for Sailors.

Metropolitan Hospital Sunday Fund.

Hospital Saturday Fund.

The following endowments have been made during the year :—

Seamen's Hospital Aid Committee Bed No. 6.

Aileen Congreve Bed.

King George's Fund for Sailors, Aileen Congreve Bed
No. 2.

Ceylon Bed Fund, No. 2.

Wireless Bed Fund.

C.O.L.G.M. Trust.

To those who have so generously aided the Seamen's Hospital Society in this way the Committee record their deep gratitude.

Trust Funds of the Seamen's Hospital Society.

THE WILLIAM HOLLINS FUND. 1865.

Mr. WILLIAM HOLLINS, of Over Wallop, Southampton, left £500 3 per cent. Reduced Bank Annuities (now $2\frac{1}{2}$ per cent. Consols), under the following proviso:—"That the sum should be invested in the Public Stocks or Funds of Great Britain, and '*kept apart*' as a fund to be called *William Hollins Fund*,' the dividends to be applied in carrying on and supporting the charitable designs of the Society." Trustees, "The Official Trustees of Charitable Funds." Income, £12 10s.

THE GEORGE STURGE FUND. 1884.

Mr. GEORGE STURGE, of Woodthorpe, Sydenham Hill Road, Kent, executed a Deed of Trust providing for the payment to the Seamen's Hospital Society of £653 Railway Stock, representing £750, under the following conditions, viz.:

"In giving the sum of £750 for a Samaritan Fund for the above Hospital, Mr. STURGE gives it on the conditions that this Fund shall be *kept entirely separate* from the general funds of the Hospital, and that the income shall be paid to or applied for such In-patients as may be necessitous, and within three months from their discharge from the Hospital, and for the purpose of their having necessary nourishment or change of air.

"Mr. STURGE hopes that this Fund may be made known, and that others may be induced to subscribe to it." Trustees, "The Official Trustees of Charitable Funds." Income, £27 15s.

THE JAMES DAVID DINSDALE FUND. 1891.

Mr. DINSDALE, of Whitby, York, bequeathed £100 to the Seamen's Hospital Society, with the following conditions:—"Upon trust to invest the same in any of the Public Stocks or Funds of Great Britain, or upon Government or Real Securities in England or Wales and that the annual income of the last-mentioned sum of one hundred pounds shall for ever hereafter be applied towards the general purposes of the above Society." Trustees, "The Official Trustees of Charitable Funds." Income, £2 10s.

THE JOHN H. LUSCOMBE MEMORIAL FUND. 1897.

This Fund of £100 was established in the year 1897, to benefit sick Seamen on leaving the Hospitals of the Seamen's Hospital Society, and to keep in remembrance the name of the late John H. Luscombe, Esq., the interest whereof to be for ever applied in the above-mentioned manner by the Committee of the Seamen's Hospital Society. Invested in the purchase of £89 1s 8d. £2 15s. per cent. (now $2\frac{1}{2}$ per cent.) Consolidated Stock. Trustees, "The Official Trustees of Charitable Funds." Income, £2 4s. 4d.

LEGACIES.

THE Committee observe with much regret that among the many large Bequests to Charities the Dreadnought and Sick Seamen seem often to be forgotten.

England's prosperity and greatness from all time comes through the sea, and the supporters of the Charity are earnestly asked to remember the Sailor.

Forms of Devise and Bequest.



The Society being dependent on Voluntary Support, persons desirous of making BEQUESTS are recommended to observe the following as legal forms:—

A.

FORM OF GIFT BY WILL OF LANDS, &c.

I give and devise to the SEAMEN'S HOSPITAL SOCIETY all that, &c. [describing the lands, houses, rents, or other property], for the use of the said Society.

B.

FORM OF BEQUEST OF MONEY, &c.

I bequeath to the SEAMEN'S HOSPITAL SOCIETY the sum of £ for the use of the said Society, to be paid free from Legacy Duty; and I declare that the receipt of the Treasurer for the time being of the said Society shall be a sufficient discharge for the same.

N.B.—By a clause in its Act of Parliament (3^d Gul. IV., cap. IX.) the Society is empowered to receive any Moneys, Messuages, Lands, Tenements, Rents, Annuities, &c., whatsoever, not exceeding the value of £12,000 per Annum, in addition to any sums of Money to any amount, and any Goods, Ships, &c., of whatever value, which may be given or bequeathed to it from time to time.

If a Will has been already made, and it is afterwards desired to benefit the Hospital, it will be sufficient if the following form is filled up, detached, duly signed, and witnessed in like manner as the Will itself, and carefully attached to the existing Will.

THIS IS A CODICIL to the last Will and Testament
of me.....

dated.....

I bequeath to the Seamen's Hospital Society the sum of

£ : : for the use
of the said Society, to be paid free of Legacy Duty,
and I declare that the receipt of the Treasurer for
the time being of the said Society shall be a sufficient
discharge for the same.

IN WITNESS whereof I have hereunto set my hand
this.....day of.....19.....

Signed by the Test.....
as and for a Codicil to
h.... last Will and Testa-
ment dated.....
in the presence of us both
being present at the same
time, who at h.... request
and in h.... presence and
in the presence of each
other have hereunto set
our names as witnesses.

Signature of Testator or Testatrix.

(1).....of.....

.....(Profession).....

(2).....of.....

.....(Profession).....

Legacies.

DO NOT FORGET THE SAILOR.

Legacies and Donations to Endowment are the best form of benefaction, because their value endures in perpetuity.

The Seamen's Hospital Society is empowered by its Act of Parliament to take and to hold Real Estate.

Form of Bequest, *vide* page 24b.

List of Legacies received since the year 1823, *vide* page 44.

Endowed Beds.

A sum of £1,000 is sufficient to Name and Endow a Bed in perpetuity.

A list of such Beds will be found on page 39, and the Committee desire to bring to the notice of all those who care for the Sailor this opportunity of coming to his aid in the hour of illness and pain, while perpetuating for all time the names of those who may be dear to the benefactor.

Qualification for a Governor—One Guinea Annually.
Life Governor—Ten Guineas (Donation).

THE AMERICAN VICTORIA JUBILEE FUND. 1897.

To commemorate the Diamond Jubilee of Her Majesty Queen Victoria the American citizens in London contributed by means of the American Victoria Jubilee Fund, a sum of £1,000 for the endowment of a bed, to be named the "Queen Victoria Bed," in the Society's Branch Hospital in the Royal Victoria and Albert Docks. Invested in the purchase of £894 17s., £2 15s. per cent. (now $2\frac{1}{2}$ per cent.) Consolidated Stock. Trustees, "The Official Trustees of Charitable Funds." Income, £22 7s. 4d.

THE ANNE DU BOIS MEMORIAL FUND. 1902.

This Fund of £45 was established in the year 1902 by Miss Esther Du Bois, deceased, in "Fond Memory of Anne Du Bois." Invested in the purchase of £48 7s. 5d. £2 15s. per cent. (now $2\frac{1}{2}$ per cent.) Consolidated Stock. A further sum of £40 invested in purchase of £49 16s. 6d. Consolidated Stock was received in 1910. Trustees, "The Official Trustees of Charitable Funds," Income, £2 9s.

THE "ARGONAUT" BED. 1906.

This Fund of £1,000 was established by Sir Henry Lunn, the Passengers and Officers of the Steam Yacht "Argonaut," 1902-1906, to endow in perpetuity a bed in the Branch Hospital of the Seamen's Hospital Society. Invested in the purchase of £1,152 14s. 9d. £2 10s. per cent. Consolidated Stock. Trustees, "The Official Trustees of Charitable Funds." Income, £28 16s. 4d.

THE "BERTHA" FUND. 1907.

This Fund has been established by an anonymous donor towards the endowment of a cot in the Children's Ward of the Dreadnought Hospital, to be called "The Bertha Cot." £216 16s. Metropolitan Water Board 3 per cent. Stock. Trustees, "The Official Trustees of Charitable Funds." Income, £6 10s. 2d.

THE WALTER ADAMS MEMORIAL. 1907.

"To commemorate his service of 35 years in the Seamen's Hospital, his fellow-workers have raised a fund to bear his name and to augment the benefits of the Samaritan Fund, which he managed with so deep and thoughtful an interest in the cause of sick and needy seamen." Invested in the purchase of £77 3s. 4d. $2\frac{1}{2}$ per cent. Consolidated Stock. Trustees, "The Official Trustees of Charitable Funds." Income, £1 18s. 4d. A Memorial is also erected in the Dreadnought Hospital Chapel. He died on duty 6th of March, 1906.

THE LADY HARRIETTE ANN McILWRAITH FUND. 1909.

This Fund was created by a gift of One Thousand Pounds from Lady McILWRAITH, of Weldoes, Harrow Weald, Middlesex, to endow in perpetuity a Medical Bed in the Dreadnought Hospital of the Seamen's Hospital Society, in memory of her husband, the Honourable Sir THOMAS McILWRAITH, K.C.M.G., LL.D., who was three times Premier of Queensland, and who died in 1900. £1,134 15s. New South Wales 3 per cent.

It is a condition of the Trust that a Scotchman shall always have priority of right to this bed.

Invested in the purchase of 3 per cent. New South Wales Stock. Trustees, "The Official Trustees of Charitable Funds." Income, £34 0s. 10d.

(See also "Harriette Ann McIlwraith" Bed, 1918.)

THE "ANNIE ZUNZ" FUND. 1910.

This Fund was created by a gift of £3,000 from the Trustees of the "Zunz Bequest" for the endowment in perpetuity of a Ward on the Somerset Floor of the Dreadnought Hospital, in memory of Annie Zunz. Invested in the purchase of £3,625 7s. 7d. India Three per cent. Stock.

Trustees, "The Official Trustees of Charitable Funds." Income, £108 15s.

THE "GEORGE BUSK" MEMORIAL FUND. 1911.

The Misses ELEANOR and FRANCES BUSK have created this Fund by a gift of One Thousand Pounds to perpetuate the memory of GEORGE BUSK, F.R.S., President of the Royal College of Surgeons in 1871, whose skill and unwearying devotion was ever at the service of the Seamen's Hospital Society from the year 1830 to 1886.

This Fund is created by his daughters for the endowment of a Bed on the Somerset Floor of the Dreadnought Hospital in fulfilment of a wish of their mother—ELLEN BUSK.

Invested in the purchase of £1,048 9s. 10d. 3½ per cent. India Stock. Trustees, "The Official Trustees of Charitable Funds." Income, £36 14s.

THE "LAW" MEMORIAL FUND. 1911.

Dr. JOHN LAW, late Brigade Surgeon in the Indian Medical Service, has created this Fund by a gift of £1,000, to name and endow a bed in perpetuity in the Dreadnought Hospital of the Seamen's Hospital Society. The Bed will be known as the "John Law" Bed, and is primarily intended for the use of natives of India. Invested in the purchase of £1,041 13s. 4d. India 3½ per cent. Stock. Trustees, "The Official Trustees of Charitable Funds." Income, £36 9s.

THE "FRASER" FUND. 1911.

Mrs. FRASER, widow of the late T. H. FRASER, R.N., bequeathed £5,000 to the Society, and her Executors expressed a wish that the name of Fraser should be connected in perpetuity with the work of the Society. In accordance with their wishes, a Ward of four beds has been named the "Fraser" Ward. It was resolved to invest the Bequest as a separate Trust Fund, while as regards the use of the capital the power to approve or veto shall lie with the Deputy Master of Trinity House, the Chairman of the Committee of Lloyd's, and the Chairman of the Committee of Lloyd's Register. Invested in the purchase of £1,715 S.E. Railway 5 per cent. Debenture Stock and £2,130 Great Eastern Railway 4 per cent. Guarantee Stock. Trustees, "The Trustees of the Seamen's Hospital Society." Income, £170 19s.

THE DUNCAN MEDAL. 1912.

Dr. ANDREW DUNCAN (Colonel, I.M.S.), a member of the Honorary Medical Staff of the Albert Dock Hospital, by his Will, dated the 23rd March, 1912, bequeathed the following Legacy to the Society:—

£100 to provide a Medal to be awarded to the Nurse at the Albert Dock Hospital who comes out first in the annual examination in Tropical Medical Nursing.

£102 13s. invested in New Zealand 4 per cent. Stock, 1943-63. Income, £4 2s. 1d. Trustees, "The Trustees of the Seamen's Hospital Society."

THE "STIDOLPH" TRUST. 1913.

This Trust was created by a gift of £1,000 from Mrs. STIDOLPH to endow in perpetuity a bed in the Dreadnought Hospital, Greenwich, in memory of her husband, the late EDWARD SPENCER STIDOLPH, a generous supporter of the Hospital, and a benefactor of all good works in Greenwich. Trustees, "The Official Trustees of Charitable Funds." Invested in £1,045 L.N.E. Rly. 4 per cent. 2nd Guaranteed Stock. Income, £41 16s.

THE "CHAMBERLAIN" FUND. 1913.

This Fund was founded by the Rt. Hon. AUSTEN CHAMBERLAIN, M.P., who set apart from the monies received by him for the advancement of Tropical Medicine, a sum of £6,000 for the maintenance of beds in the Albert Dock Hospital for the treatment of Patients suffering from Tropical Disease. Trustees, "The Official Trustees of Charitable Funds." Invested in £2,099 South Australian 4 per cent. Stock, 1940-60. £2,000 East Surrey Water Co. 4 per cent. Consolidated Debenture Stock. £2,000 Madras and Southern Mahratta Railway 4 per cent. Debenture Stock. Income, £243 19s. 2d.

THE "WILLIAM BEVAN" BED. 1915.

Named in the Dreadnought Hospital, Greenwich, in memory of the late William Bevan, Esq., who, subject to some life interests, bequeathed all his London County Council Stock in trust for the Seamen's Hospital, Greenwich.

THE "S. A. OXTOBY" BED. 1915.

The late Miss S. A. OXTOBY left a considerable sum at the discretion of her Executors for distribution to Charitable Institutions. The surviving Trustee, Mr. H. J. Jeffery, decided to devote £1,000 to the endowment of a bed in the Dreadnought Hospital, to be known in perpetuity as the S. A. OXTOBY BED. This fund was created, and the gift has been invested in £1,021 0s. 11d. Victoria Government $4\frac{3}{4}$ per cent. Inscribed Stock, 1940-60.

THE "GERALD LEATHER" TRUST. 1915.

This Fund was created by his Mother, in memory of Lieut. GERALD LEATHER, R.N., who lost his life when H.M.S. "Pathfinder" was torpedoed. Her gift of £400 has been invested in $4\frac{1}{2}$ per cent. War Stock, 1925-1945. Income, £18.

THE "C. W. SIMSON" TRUST. 1916.

£100 Exchequer Bonds (1920), for the Hospitals of the Seamen's Society.
£100 Exchequer Bonds (1920), for the London School of Tropical Medicine.
These Bonds are lodged with the Charity Commissioners for the purposes named. Income, £12.

THE "MAURICE FREDERICK ARNOLD" MEMORIAL FUND. 1917.

This Fund was created by his Father, in memory of the late MAURICE FREDERICK ARNOLD, who died at sea in May, 1916. A sum of £100 Consols has been lodged with the Charity Commissioners. Income, £2 10s.

THE "HONG-KONG" FUND. 1917.

The Hong-Kong War Charities Committee created this Fund by a contribution of £2,000, as a tribute to the courage and disregard of danger shown by the sailor.

The above amount has been invested in 5 per cent. War Stock. Trustees, "The Official Trustees of Charitable Funds." Income, £100.

THE "SILVERTOWN" BED. 1917.

By a gift of £500 the Manufacturers in Silvertown named this bed, in recognition of the services rendered at the Albert Dock Hospital on the occasion of the Explosion on 19th January, 1917.

Invested in 5 per cent. War Stock. Trustees, "The Official Trustees of Charitable Funds." Income, £25.

THE "CALLENDER VOLUNTEER SQUAD" FUND. 1917.

Created by a gift of £50. Invested in 5 per cent. War Stock.

Trustees, "The Trustees of the Seamen's Hospital Society." Income, £2 7s. 6d.

THE "BURMA" FUND. 1917.

The Secretary of State for India set aside from the Burma Fund the sum of £1000 to endow a Bed in the Hospital for Tropical Diseases.

Invested in 5 per cent. War Stock.

Trustees, "The Official Trustees of Charitable Funds." Income, £50.

THE "JACOBS" FUND. 1917.

This Fund is created by the Associated Oil Carriers, Ltd., as a tribute to the memory of their Chairman, the late Mr. JOHN J. JACOBS. The gift of £1,000 has been invested in 5 per cent. War Stock, and a Bed endowed in the Dreadnought Hospital.

Trustees, "The Official Trustees of Charitable Funds." Income, £50.

THE "BURY" FUND. 1918.

£518 0s. 5d. 5 per cent. War Stock 1929-47. Given by Mrs. BURY, of St. Leonard's House, Nazeing, Essex, for the Julian Henry Bed at the Albert Dock Hospital. Trustees, "The Official Trustees of Charitable Funds."

THE "GORDON" BED. 1918.

Given by Mrs. LANGFORD for the Angas Home, in memory of her Father, ROBERT GORDON. £1,064 8s. 6d. War Stock, 1929-47. Trustees, "The Official Trustees of Charitable Funds."

THE "HARRIETTE ANN McILWRAITH" BED. 1918.

Given by LADY HARRIETTE ANN McILWRAITH for the Angas Home. £1,056 15s. 2d. 5 per cent. War Stock, 1929-47. Trustees, "The Official Trustees of Charitable Funds."

(See also "Lady Harriette Ann McIlwraith" Fund, 1909.)

THE "CHERRY BLOSSOM" BED. 1918.

At the Dreadnought Hospital. A gift of the Japanese Merchants in London. £1,056 15s. 2d. 5 per cent. War Stock, 1929-47. Trustees, "The Official Trustees of Charitable Funds."

THE "NAVY LEAGUE OVERSEAS RELIEF FUND" BED. 1918.

At the Angas Home. £1,055 11s. 5 per cent. War Stock, 1929-47. Trustees, "The Official Trustees of Charitable Funds."

THE "ELIZABETH TUPPER" TRUST. 1918.

This Trust was created by a bequest of £1,800 by the late Mrs. ELIZABETH TUPPER "as a remembrance of her late dear son, Lieutenant CHARLES GEORGE DE BEAUVOIR TUPPER, R.N. The above amount has been invested in 5 per cent. War Stock. Trustees, "The Official Trustees of Charitable Funds."

THE "OLDHAM LEES" TRUST. 1918.

For the Angas Home. £105 13s. 6d. 5 per cent. War Stock, 1929-47. Trustees, "The Official Trustees of Charitable Funds."

THE "BECKER" BED. 1918.

For the Angas Home. Endowment created by SIR WALTER BECKER, of Turin. £1,056 14s. 11d. 5 per cent. War Stock. Trustees, "The Official Trustees of Charitable Funds."

THE "KING GEORGE'S FUND FOR SAILORS" BED (1). 1918.

For the Angas Home. £1,583 19s. 11d. 5 per cent. War Stock. Trustees, "The Official Trustees of Charitable Funds."

BRITISH RED CROSS AND ORDER OF ST. JOHN OF JERUSALEM FUND. 1919.

By a gift of £100,000 the British Red Cross Society and the Order of St. John of Jerusalem enabled the Society to purchase the Endsleigh Palace Hotel for the purpose of a Hospital for Tropical Diseases, and of this sum £45,000 was set apart as an endowment thereof. £20,221 0s. 8d. 4½ per cent. Conversion Stock, 1940-44. £20,000 4 per cent. L.M. & S. Rly. Debenture Stock. £13,988 4s. 3½ per cent. Conversion Stock, 1961. Trustees, "The Official Trustees of Charitable Funds."

THE "STANLEY MAUDE" WARD. 1919.

Endowed at the Hospital for Tropical Diseases, Endsleigh Gardens, N.W., by the Mesopotamia Comforts Fund, in memory of the late LIEUTENANT-GENERAL SIR FREDERICK STANLEY MAUDE, K.C.B., C.M.G., D.S.O., £12,745 13s. 3d. 4 per cent. Funding Loan, 1960-90. Trustees, "The Official Trustees of Charitable Funds."

THE "SILVER THIMBLE" WARD. 1919.

Endowed at the Dreadnought Hospital, Greenwich, by the Silver Thimble Fund. £10,623 12s. 2d. 5 per cent. War Stock, 1929-47. Trustees, "The Official Trustees of Charitable Funds."

THE "ANGAS" BED. 1919.

At the Angas Convalescent Home, Cudham. Endowed by Mrs. ANGAS, founder of the Home. £1,049 15s. 8d. 5 per cent. War Stock, 1929-47. Trustees, "The Official Trustees of Charitable Funds."

THE "BALTIC AND LLOYD'S AMBULANCE UNIT" COT. 1919.

Endowed in the Angas Home, by the Committee of the Baltic and Lloyd's Ambulance Unit. £1,095 16s. 4d. 5 per cent. War Stock, 1929-47. Trustees, "The Official Trustees of Charitable Funds."

THE "BRITISH AMERICAN" WAR RELIEF FUND OF PHILADELPHIA" BED. 1919.

Endowed at the Dreadnought Hospital, by the Committee of the above-mentioned Fund. £1,136 13s. 4d. 5 per cent. War Stock, 1929-47. Trustees, "The Official Trustees of Charitable Funds."

THE "GULLIVER" BED. 1919.

Endowed in the Dreadnought Hospital, by proceeds of Matinee at the Palladium, arranged by Col. CHARLES GULLIVER. £1,097 7s. 1d. 5 per cent. War Stock, 1929-47, £135 5 per cent. National War Bonds, 1928 (National Sunday League Gift). Trustees, "The Official Trustees of Charitable Funds."

THE "HAMILTON CANADA" BED. 1919.

Endowed in the Dreadnought Hospital, by the Hamilton Branch of the Navy League. £1,061 13s. 5 per cent. War Stock, 1929-47. Trustees, "The Official Trustees of Charitable Funds."

THE "LADIES' EMERGENCY COMMITTEE OF THE NAVY LEAGUE" BEDS. 1919.

Two Beds have been endowed by the Ladies' Emergency Committee of the Navy League, one at the Dreadnought Hospital, and one at the Angas Convalescent Home. £2,113 10s. 4d. 5 per cent. War Stock, 1929-47. Trustees, "The Official Trustees of Charitable Funds."

THE "NORMAN AUSTIN TAYLOR" BED. 1919.

Endowed in the Angas Home, by Mr. AUSTIN TAYLOR, in memory of his son, NORMAN AUSTIN TAYLOR, who fell in the war. £1,250 4 per cent. Funding Loan, 1960-90. Trustees, "The Official Trustees of Charitable Funds."

THE "PERTHSHIRE" BED. 1919.

Endowed in the Dreadnought Hospital, by the Canteen Committee, Fleet Coal Office, Scapa Flow. £1,051 1s. 11d. 5 per cent. War Stock, 1929-47. Trustees, "The Official Trustees of Charitable Funds."

THE "GUTHRIE RANKIN" FUND. 1919.

A sum of £1,000 was bequeathed by the late Dr. GUTHRIE RANKIN, Consulting Physician of the Dreadnought Hospital, to augment the benefits of the Samaritan Fund. Invested in the purchase of £1,084 13s. 11d. 5 per cent. War Stock, 1929-47. Trustees, "The Official Trustees of Charitable Funds."

THE "SEVENOAKS" BED. 1919.

Endowed in the Angas Convalescent Home, Cudham, by residents in Sevenoaks and the district. £1,095 16s. 4d. 5 per cent. War Stock, 1929-47. Trustees, "The Official Trustees of Charitable Funds."

THE "T. W. SMYTH" BED. 1919.

Endowed in the Dreadnought Hospital, by Mr. and Mrs. T. W. SMYTH, in memory of their son, BASIL W. SMYTH, who fell in the war. £1,084 13s. 11d. 5 per cent. War Stock, 1929-47. Trustees, Official Trustees of Charitable Funds.

THE "MINESWEEPERS" BED. 1920.

Endowed in the Dreadnought Hospital, by a gift of £1,000. Invested in 5 per cent National War Bonds, 1922. Registered. Trustees, The Official Trustees of Charitable Funds.

"LLOYDS BANK" BED. 1920.

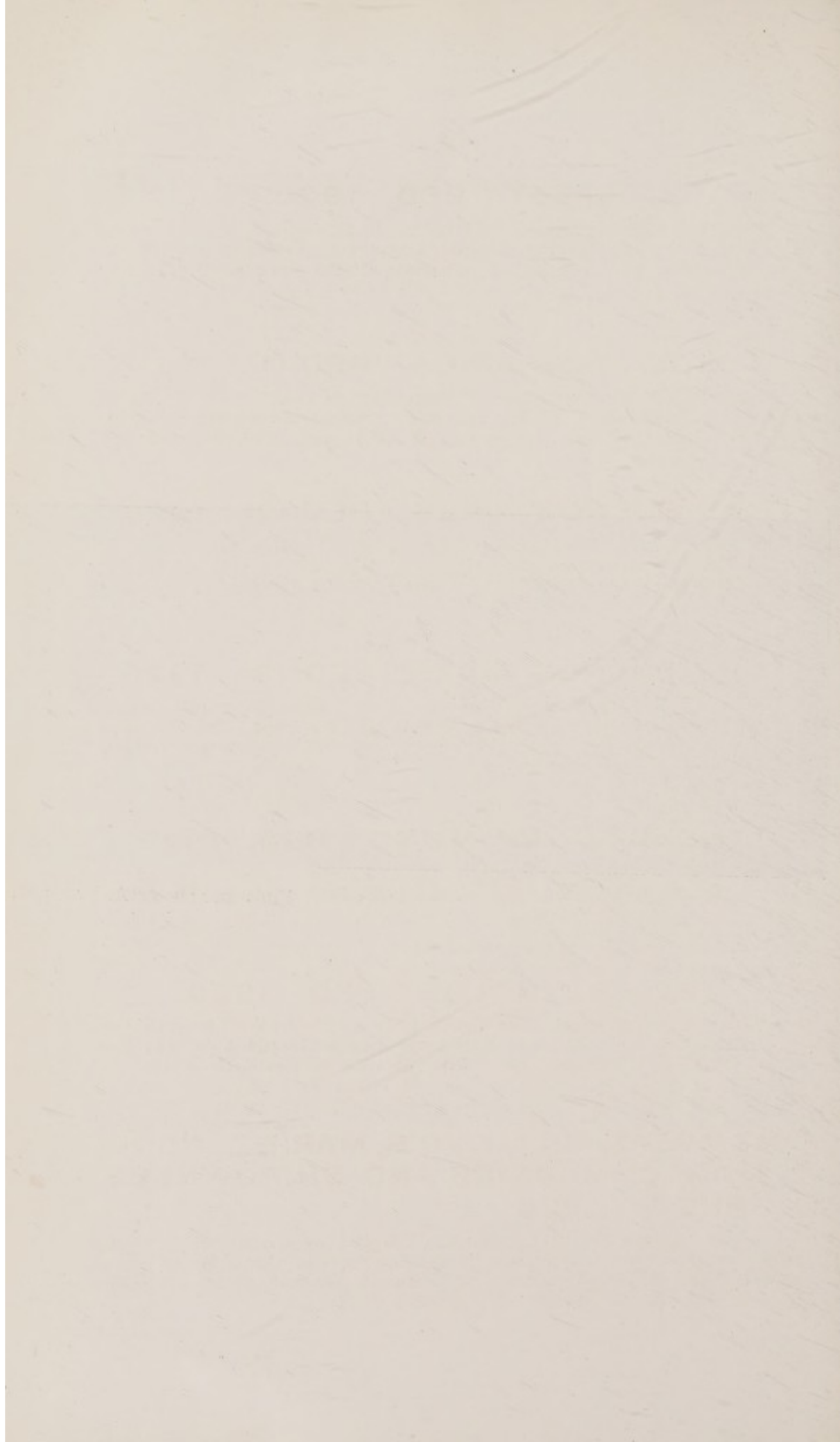
Named in the Dreadnought Hospital as a tribute to the fortitude and resource of British Seamen during the Great War, in consideration of annual subscription of fifty pounds from Lloyds Bank, Ltd.

KING GEORGE'S FUND FOR SAILORS' WARD



NAMED IN RECOGNITION OF
THE MUNIFICENT SUPPORT
ACCORDED BY THE FUND TO
THE SEAMEN'S HOSPITAL SOCIETY
FROM 1917 TO 1925 - £ 40,000

PHOTOGRAPH BY A. PARSONS.



"LACEY" BED. 1920.

A sum of £100 contributed by Miss M. LACEY, towards the endowment of a Bed in the Dreadnought Hospital, Greenwich. Invested in £113 11s. 5 per cent. War Stock, 1929-1947. Trustees, Official Trustees of Charitable Funds.

"THE BUENOS AIRES" BED (1). 1920.

Endowed in the Dreadnought Hospital, by a contribution of £1,000 collected in Buenos Aires by Mr. and Mrs. MORRIS. £1,194 16s. 5d. 5 per cent. War Stock, 1929-1947. Trustees, Official Trustees of Charitable Funds.

"THE BUENOS AIRES" BED (2). 1920.

Endowed in the Dreadnought Hospital, by a further contribution of £1,000, collected in Buenos Aires by Mr. and Mrs. MORRIS. £1,168 12s. 9d. 5 per cent. War Stock, 1929-1947. Trustees, Official Trustees of Charitable Funds.

"THE BUENOS AIRES" BED (3). 1920.

Endowed in King George's Sanatorium for Sailors, Bramshott, Hants, by a contribution of £1,000 collected by Mr. and Mrs. MORRIS. £1,169 10s. 8d. 5 per cent. War Stock, 1929-1947. Trustees, Official Trustees of Charitable Funds.

"THE ALEC HAMMOND" BED. 1920.

Endowed in the Dreadnought Hospital, by a gift of £1,000. £1,168 12s. 9d. 5 per cent. War Stock, 1929-1947. Trustees, The Official Trustees of Charitable Funds.

THE "REYNOLDS" BED. 1920.

Endowed in the Albert Dock Hospital, by a gift of £1,000 from Captain G. N. REYNOLDS, M.C., and Mrs. REYNOLDS. £1,090 11s. 10d. 5 per cent. War Stock, 1929-1947. Trustees, The Official Trustees of Charitable Funds.

"MEMBERS OF LLOYD'S, MARINE INSURANCE COMPANIES AND SHIPOWNERS' TRUST" 1920.

A Bed endowed in the Dreadnought Hospital, by a contribution of One Thousand Pounds, on the occasion of the Sea Services' Commemoration, 4th August, 1919. £1,212 Corporation of London 5 per cent. Stock, 1945-1965. Trustees, The Official Trustees of Charitable Funds.

THE "ANGAS" WARD. 1920.

Endowed in King George's Sanatorium for Sailors, Bramshott, Hants, by Mrs. ANGAS. £1,169 10s. 8d. 5 per cent. War Stock, 1929-1947. Trustees, Official Trustees of Charitable Funds.

"SEAMEN'S HOSPITAL AID COMMITTEE" BED (1). 1921.

Endowed by Seamen's Hospital Aid Committee in Dreadnought Hospital, Greenwich. Invested in £1,085 15s. 11d. 5 per cent. War Stock, 1929-1947. Trustees, Official Trustees of Charitable Funds.

"INCHCAPE" FUND. 1921.

For endowment of King George's Sanatorium for Sailors, £70,000. Invested in £10,100 6 per cent. Ceylon Inscribed Stock, £11,113 8s. 5 per cent. War Loan 1929-47 Stock, £10,350 6 per cent. Union of South Africa Stock, 1930-40, £10,500 5½ per cent. Glasgow Corporation, 1935-50, £14,250 4 per cent. London Midland & Scottish Rly. Debenture Stock, £14,400 4 per cent. Southern Rly. Debenture Stock, £11,363 1s. 5d., London County 5 per cent. Stock, £461 4s. 8d. New Zealand 4½ per cent. Inscribed Stock, 1944. Trustees, Official Trustees of Charitable Funds.

"DUKE OF CONNAUGHT" WARD. 1921.

Endowed in King George's Sanatorium for Sailors, Bramshott, Hants, by a contribution of £1,000 from King George's Fund for Sailors. Invested in £997 8s. New Zealand 6 per cent. Inscribed Stock 1936-51. Trustees, Official Trustees of Charitable Funds.

"DUKE OF YORK" WARD. 1921.

Endowed in King George's Sanatorium for Sailors, Bramshott, Hants, by a contribution of £1,000 from King George's Fund for Sailors. Invested in £1,062 5s. 9d. Sheffield Corporation 5½ per cent. Redeemable Debenture Stock 1941-51. Trustees, Official Trustees of Charitable Funds.

THE "SHANGHAI" BED. 1921.

Endowed in King George's Sanatorium for Sailors, Bramshott, Hants, by a contribution of £1,104 7s. 8d. received from the Kung Yik Cotton Spinning and Weaving Co., Ltd., and the Yangtze Cotton Mill, Ltd., per the Admiralty. Invested in £2,103 0s. 10d. India 3 per cent. Stock. Trustees, Official Trustees of Charitable Funds.

"FOX BATLEY" FUND. 1921.

Being a sum of £200 bequeathed to the Society by the late Mr. W. Fox BATLEY. Invested in £202 4s. 8d. Ceylon 6 per cent. Stock 1936-51. Trustees, Official Trustees of Charitable Funds.

THE "SHEERNESS" BED. 1921.

Endowed in the Dreadnought Hospital, by a contribution of £1,000 from Miss E. GOOD. Invested in £1,133 0s. 2d. 5 per cent. War Stock 1929-47. Trustees, Official Trustees of Charitable Funds.

THE "ROWDEN" FUND. 1921.

Being a gift of £500 Ordinary Stock of the Taff Vale Railway Co., from Major HARRY WETHERELL ROWDEN. Trustees, Official Trustees of Charitable Funds.

THE "McEACHARN" BED. 1922.

Endowed in the Dreadnought Hospital by a contribution of £1,000 from LADY McEACHARN, in memory of her husband, MALCOLM DONALD McEACHARN. Invested in £997 8s. 11d. 5 per cent. War Loan Stock, 1929-47. Trustees, Official Trustees of Charitable Funds.

THE "ORFORD-WALKER" BED. 1922.

Endowed in the Dreadnought Hospital by a bequest of £1,000 from Mrs. C. T. ORFORD, in memory of her husband and three brothers. Invested in £996 15s. 5d. 5 per cent. War Loan Stock, 1929-47. Trustees, Official Trustees of Charitable Funds.

THE "SWEDISH" BED. 1922.

Endowed in the Dreadnought Hospital by a gift of £1,000 from Stovedore J. J. HOVEY, as a tribute to Swedish Seamen. Invested in £1,004 6s. 9d. 5 per cent. War Loan Stock, 1929-47. Trustees, Official Trustees of Charitable Funds.

THE "LAMBERT" BED. 1922.

Endowed in the Dreadnought Hospital by a sum of £1,000 bequeathed by Professor CARLTON JOHN LAMBERT, M.A., F.R.A.S., as a memorial to Seamen. Invested in £1,004 6s. 9d. 5 per cent. War Loan Stock, 1929-47. Trustees, Official Trustees of Charitable Funds.

THE "ANNIE BARNES" BEDS. 1922.

A bed endowed in each of the following Institutions—the Dreadnought Hospital, King George's Sanatorium, and the Angas Convalescent Home—by a bequest of £3,000 from Miss ANNIE BARNES, to benefit Sailors, received per SIR WALTER TROWER, Executor. Invested in £3,013 0s. 3d. 5 per cent. War Loan Stock, 1929-47. Trustees, Official Trustees of Charitable Funds.

THE "ANGAS" BED. 1922.

Endowed in the Dreadnought Hospital by a gift of £1,000 from Mrs. ANGAS. Invested in £1,004 6s. 9d. 5 per cent. War Loan Stock, 1929-47. Trustees, Official Trustees of Charitable Funds.

THE "CEYLON" BED FUND. 1922-1925.

A sum of £1,000 collected in Ceylon towards the endowment of a bed. Invested in £1,030 14s. 8d. 5 per cent. War Loan Stock, 1929-47. Trustees, Official Trustees of Charitable Funds.

"SHANGHAI SILVER THIMBLE FUND" BED. 1922.

A sum of £749 15s. 3d. contributed by the SHANGHAI SILVER THIMBLE FUND towards the endowment of a bed in the Dreadnought Hospital. Invested in £749 7s. 8d. 5 per cent. War Loan Stock, 1929-47. Trustees, Official Trustees of Charitable Funds.

THE "SCHOOLS" BED FUND. 1922-1925.

A sum of £1,000 contributed by various Schools towards the endowment of a bed in the Angas Convalescent Home. Invested in £821 13s. 3d. 5 per cent. War Stock, 1929-47, and £256 8s. 6d. 3½ per cent. Conversion Stock, 1929-47. Trustees, Official Trustees of Charitable Funds.

SEAMEN'S HOSPITAL AID COMMITTEE BED (2). 1923.

Endowed by Seamen's Hospital Aid Committee in Dreadnought Hospital. The gift of Freemasons, £1,000. Invested in £994 3s. 7d. 5 per cent. War Stock, 1929-47. Trustees, Official Trustees of Charitable Funds.

SEAMEN'S HOSPITAL AID COMMITTEE BED (3). 1923.

Endowed by Seamen's Hospital Aid Committee in Dreadnought Hospital. Invested in £905 15s. 9d. New South Wales 5 per cent. Stock, 1932-42, £127 15s. 9d. 3½ per cent. Conversion Stock, 1940-44. Trustees, Official Trustees of Charitable Funds.

THE "DOUGLAS VERNON COW" BED. 1923.

Endowed in the Dreadnought Hospital by a gift of £1,000 from Mr. DOUGLAS COW. Invested in £1,167 London Midland & Scottish Rly. 4 per cent. Preference Stock, 1923. Trustees, Official Trustees of Charitable Funds.

THE MOORSOM TRUST BED (1). 1923. THE MOORSOM TRUST BED (2). 1923.

Endowed in the Dreadnought Hospital, Greenwich, in memory of Sir ROBERT MOORSOM, H.M.S. "Revenge," Trafalgar. Captain WILLIAM MOORSOM, H.M.S. "Diadem," Crimea. £1,800 received from King George's Fund for Sailors for the above endowments. Invested in £2,356 10s. 8d. 3½ per cent. Conversion Stock, 1961. Trustees, Official Trustees of Charitable Funds.

THE MOORSOM TRUST BED (3). 1924.

Endowed in the Tilbury Hospital, in memory of SIR ROBERT MOORSOM, H.M.S. "Revenge," Trafalgar. CAPTAIN WILLIAM MOORSOM, H.M.S. "Diadem," Crimea. £1,724 received from King George's Fund for Sailors for this Endowment. Invested in £1,718 5s. 1d. $3\frac{1}{2}$ per cent. Conversion Stock, and £517 London Electric Rly. 4 per cent. Preference Stock. Trustees, Official Trustees of Charitable Funds.

SEAMEN'S HOSPITAL AID COMMITTEE BED (4). 1924.

Endowed by Seamen's Hospital Aid Committee in Dreadnought Hospital. Invested in £1,284 7s. 9d. Conversion $3\frac{1}{2}$ per cent. Stock. Trustees, Official Trustees of Charitable Funds.

SEAMEN'S HOSPITAL AID COMMITTEE BED (5). 1925.

Endowed by Seamen's Hospital Aid Committee in Dreadnought Hospital. Invested in £1,018 0s. 9d. Commonwealth of Australia $4\frac{3}{4}$ per cent. Registered Stock, 1940-60. Trustees, Official Trustees of Charitable Funds.

SIR ELLIS KADOORIE TRUST. 1924.

Endowed in the Dreadnought Hospital. £221 14s. 4d. invested in £250 4 per cent. Funding Loan. This endowment was allocated to the Seamen's Hospital Society by the Official Trustees of Charitable Funds.

JULIA THOMAS FUND. 1924.

£900 received on account of Samaritan Fund, Seamen's Hospital Society. Invested in £1,164 18s. $3\frac{1}{2}$ per cent. Conversion Stock. Trustees, Official Trustees of Charitable Funds.

MCCARTHY MAIN TRUST. 1924.

Endowment of one bed in the Dreadnought Hospital, and one bed in the Tilbury Hospital, in memory of LT.-COMDR. JAMES MCCARTHY MAIN, Invested in £2,049 15s. 3d. Commonwealth of Australia $4\frac{3}{4}$ per cent. Registered Stock, 1940-60. Trustees, Official Trustees of Charitable Funds.

KING GEORGE'S FUND FOR SAILORS' BED (2). 1925.

Endowed by King George's Fund at Tilbury Hospital. Invested in £1,313 5s. 3d. South Indian Railway 4 per cent. Debenture Registered Stock. Trustees, The Official Trustees of Charitable Funds.

KING GEORGE'S FUND FOR SAILORS' BED (3). 1925.

A sum of £1,000 has been received from King George's Fund for Sailors, being a grant from the Henry H. Wills' Fund, for the endowment of a bed at the Tilbury Hospital. Invested in £992 8s. 9d. Cardiff Corporation 5 per cent. Redeemable Stock, 1945-65. Trustees, Official Trustees of Charitable Funds.

THE "JAMES NOURSE" BEDS. 1925.

Endowed at the Dreadnought Hospital, Greenwich, by Mrs. JAMES NOURSE, in memory of her late husband. Invested in £2,529 London, Midland and Scottish Railway 4 per cent. Guaranteed Stock. Trustees, The Official Trustees of Charitable Funds.

SINGHANEER INDIAN WARD FUND.

Endowed in the Tilbury Hospital, by Mr. P. SINGHANEER, of Poona, who gave a Lakh of Rupees for establishing a Singhaneer Indian Ward, £2,700 being invested in the following Stocks:—£1,144 India 4½ per cent. Stock, £89 East India Railway Annuity, Class "B," and £264 7s. 3d. 3½ per cent. Conversion Stock. Trustees, Official Trustees of Charitable Funds.

THE BERNHARD BARON FUND. 1925.

To provide medals and prizes for the Nurses' Training School at the Dreadnought Hospital. £500 invested in £520 15s. 2d. Victoria Government 4½ per cent. Inscribed Stock 1940-60. Trustees, The Official Trustees of Charitable Funds.

SEAMEN'S HOSPITAL AID COMMITTEE BED (6). 1926.

Endowed by Seamen's Hospital Aid Committee, in Dreadnought Hospital. Invested in £1,037 17s. 11d. Commonwealth of Australia 4½ per cent. Registered Stock, 1940-60. Trustees, Official Trustees of Charitable Funds.

"AILEEN CONGREVE" BED. 1926.

Endowed in Dreadnought Hospital, by gift of £1,000 from Trustees of the late WILLIAM JOHNSTON. Invested in £1,350 London Electric Railway 4 per cent. Preference Stock. Trustees, Official Trustees of Charitable Funds.

"AILEEN CONGREVE" BED (2). 1926.

A sum of £1,000 has been received from King George's Fund for Sailors for endowment of a Bed at the Dreadnought Hospital. Invested in £998 13s. Commonwealth of Australia 5 per cent. Stock, 1935-45. Trustees, Official Trustees of Charitable Funds.

THE "CEYLON" BED FUND (2). 1926.

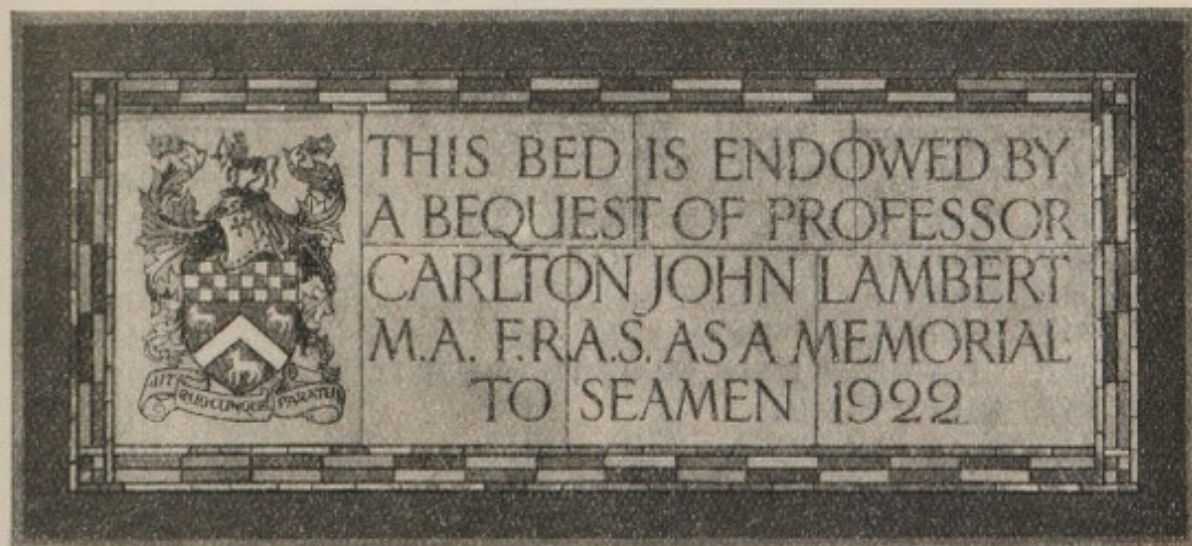
A sum of £1,000 collected in Ceylon towards the endowment of a Bed at the Hospital for Tropical Diseases. Invested in £1,702 London and North Eastern Railway 3 per cent. Debenture Stock. Trustees, Official Trustees of Charitable Funds.

"WIRELESS" BED. 1926.

By the courtesy of the British Broadcasting Co., an appeal was broadcast from 2LO on 5th September, for funds to endow a Bed at the Dreadnought Hospital. £325 14s. 5d. has been received. £300 has been invested in £299 6s. 6d. Commonwealth of Australia 5 per cent. Stock, 1935-45. Trustees Official Trustees of Charitable Funds.

C.O.L. G.M. TRUST. 1926.

A donation of £100 has been received from an anonymous Donor. Invested in £99 14s. 6d. Government of the Commonwealth of Australia 5 per cent. Reg. Stock, 1935-45. Trustees, Official Trustees of Charitable Funds.



ONE OF THE TABLETS IN MOSAIC OVER AN ENDOWED BED.

£1,000 Endows a Bed for all time

NAMED BEDS AND WARDS

In the Hospitals and the Convalescent Home of the
SEAMEN'S HOSPITAL SOCIETY.

"D."—Dreadnought; "A.D."—Albert Dock; "A.H."—Angas Home; "SAN."—Sanatorium; "H.T.D."—Hospital for Tropical Diseases; "T"—Tilbury.

Name of Bed or Ward.	Year.
THE CHARLTON BED, "D."	1890
THE JENNINGS BED, "A.D."	1891
THE GOTHIC BED, "A.D."	1893
THE DONALD CURRIE WARD, "D." ..	1896
THE COOTE BED, "A.D."	1897
THE QUEEN VICTORIA BED, "A.D." ..	1897
THE SIR WILLIAM MAXWELL COT, "A.D."	1899
THE P. & O. BED, "A.D."	1899
THE NAIRNE BED, "A.D."	1899
THE MALCOLM CAMPBELL BED, "A.D."	1902
THE ARGONAUT BED, "A.D."	1902-6
THE TRINITY HOUSE BED, "A.D." ..	1904
THE BUCKWELL BED, "D."	1906-10
THE BERTHA COT, "D."	1907
THE CHRYSANTHEMUM BED, "D." ..	1908
THE HARRIETTE McILWRAITH BED, "D."	1909
THE ANNIE ZUNZ WARD, "D."	1910
THE LAW BED, "D."	1911
THE GEORGE BUSK BED, "D."	1911
THE FRASER WARD, "D."	1911
THE MAUDE ASHLEY BED, "D."	1912
THE MAUDE ASHLEY COT, "D."	1912
THE MAUDE ASHLEY BED, "A.D." ..	1916
THE STIDOLPH BED, "D."	1913
THE CHAMBERLAIN WARD, "H.T.D."	1913
THE BEVAN BED, "D."	1915
THE S. A. OXTOBY BED, "D."	1915
THE GERALD LEATHER BED, "D." ..	1915
THE SILVERTOWN COT, "A.D."	1917
THE HONG KONG BEDS (4), "D." ..	1917
THE JACOBS BED, "D."	1917
THE BURMA BED, "H.T.D."	1917
THE CHERRY BLOSSOM BED, "D." ..	1918
THE GORDON BED, "A.H."	1918
THE HARRIETTE ANNE McILWRAITH BED, "A.H."	1918
SIR WALTER BECKER BED, "A.H." ..	1918

Annual Number of Patients Treated by the Seamen's Hospital Society since its Establishment.

Year.	GREENWICH.			Year.	GREENWICH.			Royal Albert Dock Hospital.		Hospital for Tropical Diseases.		TILBURY HOSPITAL.		ANGAS HOME.	King George's Sanatorium for Sailors.	DISPENSARIES, New Patients.		TOTAL.
	In.	New Out.	TOTAL.		In.	New Out.	In.	New Out.	In.	In.	New Out.	Well Street and E. India Dock Road.	Gravesend.					
1821	413	...	413	<i>St. frd.</i>	110842	66187	177029
1822	788	...	788	<i>f</i> 1874	2058	1509	3567
1823	919	...	919	<i>g</i> 1875	1856	1685	3541
1824	1249	...	1249	1876	2106	2786	4892
1825	1481	...	1481	1877	2077	3080	5157
1826	1854	412	2266	1878	1549	3004	4553
1827	2124	612	2736	1879	1740	3084	4824
1828	1877	623	2500	1880	1808	2625	<i>h</i> 371	...	4804
1829	1755	682	2437	1881	1978	3621	1340	...	6939
1830	1868	701	2569	1882	2190	3710	1408	...	7808
1831	2017	954	2971	1883	2216	4359	1535	...	8110
1832	2243	824	3067	1884	<i>i</i> 1561	5325	2035	...	8921
1833	2201	994	3195	1885	<i>i</i> 1416	3708	2166	...	7290
1834	2422	1043	3465	1886	2095	3032	2327	...	7454
1835	2341	1191	3532	1887	2188	3253	1920	...	7361
1836	2510	1272	3782	1888	2248	3450	1763	<i>k</i> 701	8162
1837	2503	1505	4008	1889	2198	4440	1624	850	9112
1838	2579	1502	4081	1890	2442	4764	<i>l</i> 230	938	1806	1044	11224
1839	2573	1371	3944	1891	2642	4750	510	2419	<i>m</i> 1988	1201	13510
1840	2564	1505	4069	1892	<i>n</i> 2268	6310	422	3287	3043	1105	16435
1841	2774	1644	4418	1893	<i>n</i> 2254	5672	328	5299	3220	974	17747
1842	2737	1982	4719	1894	2087	5966	317	5046	3072	939	17427
1843	2778	2033	4811	1895	2095	6593	280	5082	3327	916	18293
1844	2416	1794	4209	1896	2254	7119	362	6005	2862	920	19522
1845	2421	1595	4016	1897	2167	8081	453	9918	3628	954	25201
1846	2312	1629	3941	1898	1997	8120	551	9529	4258	943	25398
1847	2712	1941	4653	1899	1987	10519	528	7703	4083	977	25797
1848	2581	2153	4734	1900	1912	9793	488	8647	3814	938	25692
1849	2239	2099	4338	1901	2044	9167	<i>o</i> 590	8774	3617	984	25176
1850	2095	1528	3623	1902	1969	8182	576	9139	3064	928	23858
1851	2242	1642	3884	1903	1913	8943	588	8953	3150	922	24469
1852	2316	1554	3870	1904	1739	9104	560	10860	2979	810	26052
1853	2563	1458	4021	1905	1719	8712	514	10626	2885	834	25290
1854	3007	1632	4639	1906	1694	<i>p</i> 16954	564	7555	2918	756	30441
1855	2130	1650	3780	1907	1861	15207	553	8542	2773	666	29602
1856	1851	1658	3509	1908	1704	16141	417	8654	3297	686	30899
1857	1902	1527	3429	1909	1718	20197	484	7904	3248	749	34300
1858	1992	1440	3432	1910	1821	19355	550	8428	2833	718	33705
1859	1782	1437	3219	1911	2069	17212	504	8903	2869	694	32151
1860	1779	1202	2981	1912	1969	15747	546	9448	2849	616	31175
1861	2244	1539	3783	1913	1885	13322	531	7712	1026	586	25062
1862	1923	1610	3533	1914	1589	<i>q</i> 10733	557	7723	1033	490	22125
1863	1964	1480	3444	1915	1935	5168	668	7801	847	128	16547
1864	1912	1353	3265	1916	2433	6133	682	6698	314	83	16343
1865	1927	1145	3072	1917	2641	6798	690	6607	352	52	17140
1866	2186	1164	3350	1918	2979	6620	651	6107	366	36	16909
1867	1969	1050	3019	1919	2669	7709	760	6290	401	57	18229
1868	1892	1030	2922	1920	2254	7154	625	7366	<i>s</i> 539	300	278	18598
1869	1937	1009	2946	1921	2471	8098	680	9008	651	372	302	21665
1870	2012	1358	3370	1922	2408	7587	837	8822	592	344	103	20963
1871	2051	1671	3722	1923	2514	8320	790	8235	530	400	131	21202
1872	2011	1474	3485	1924	2636	9120	764	8122	575	<i>v</i> 260	2176	411	131	411	319	24514
1873	1905	1515	3420	1925	2997	10524	835	7531	622	<i>w</i> 578	3730	386	119	385	—	27707
				1926	2784	10948	700	7159	603	808	4429	387	99	347	—	28264
<i>St. frd.</i>	110842	66187	177029	<i>Total</i>	222646	479700	20685	276740	4112	1646	10335	3151	645	94536	23360	1137556

a On board H.M.S. "Grampus" (50 Gun Ship).

b Transferred to H.M.S. "Dreadnought" (104 Gun Ship).

c Cholera epidemic—H.M.S. "Dreadnought" supplemented by H.M.Ss. "Devonshire" and "Bacchante."

d Transferred to H.M.S. "Caledonia" (120 Gun Ship); and her name altered to "Dreadnought."

e Transferred to Infirmary of Greenwich Hospital, on shore.

f Up to this year with the exception of the first three years the Annual Reports were made up to the 31st January.

g Eleven months only.

h Dispensary opened at Well Street, London Docks, 18/10/80.

i Hospital partly closed for Repairs, 8/11/84 to 1/10/85.

k Dispensary opened at Gravesend, 1/6/87.

l Branch Hospital opened by H.R.H. the Princess of Wales, 24/6/90.

m Dispensary moved from Well Street to 51, East India Dock Road, 1/10/91.

n The U. W. Floor emptied in readiness for Cholera cases during a part of the year.

o Branch Hospital enlarged to 50 Beds.

p Out-Patient Department enlarged and re-organized.

q Out-Patient Department closed from August 7th, 1914.

r Angas Home opened at Cudham, 8th July, 1918.

s Hospital for Tropical Diseases opened 9/2/20.

t Gravesend Dispensary closed June, 1921.

u King George's Sanatorium for Sailors opened by H.R.H. the Duke of York, 12/7/21.

v Tilbury Hospital taken over by S.H.S., 1/1/24.

w Ditto Extension opened 24/6/25

Name of Bed or Ward.	Year.
KING GEORGE'S FUND FOR SAILORS BED, "A.H."	1918
OVERSEAS BRANCH OF THE NAVY LEAGUE BED, "A.H."	1918
THE JULIAN HENRY BED, "A.D." ..	1918
THE BRITISH RED CROSS AND ORDER OF ST. JOHN OF JERUSALEM FUND, "H.T.D."	1919
THE SILVER THIMBLE WARD, "D." ..	1919
THORNTON HEATH BED.	ITALIA BED.
WIMBLEDON AND MERTON BED.	ALDERNEY AND SARK BED.
NOTTINGHAM BED.	GUERNSEY BED.
LONDON BED.	JERSEY BED.
THE "QUIVER" BED.	BIRMINGHAM BED
THE STANLEY MAUDE WARD, "H.T.D."	1919
THE ANGAS BED, "A.H."	1919
THE BALTIC AND LLOYD'S AMBULANCE UNIT COT, "A.H."	1919
THE BRITISH AMERICAN WAR RELIEF FUND OF PHILADELPHIA BED, "D." ..	1919
THE GULLIVER BED, "D."	1919
THE HAMILTON CANADA BED, "D." ..	1919
THE LADIES' EMERGENCY COMMITTEE OF THE NAVY LEAGUE BED, "D." ..	1919
THE LADIES' EMERGENCY COMMITTEE OF THE NAVY LEAGUE BED, "A.H." ..	1919
THE NORMAN AUSTIN TAYLOR BED, "A.H."	1918
THE PERTSHIRE BED, "D."	1919
THE SEVENOAKS BED, "A.H."	1919
THE SMYTH BED, "D."	1919
THE MINESWEEPERS' BED, "D."	1920
LLOYDS BANK BED, "D."	1920
LACEY BED, "D."	1920
BUENOS AIRES BED No. 1, "D."	1920
BUENOS AIRES BED No. 2, "D."	1920
BUENOS AIRES BED, "SAN."	1920
ALEC HAMMOND BED, "D."	1920
REYNOLDS' BED "A.D."	1920
MEMBERS OF LLOYD'S, MARINE INSUR- ANCE COMPANIES AND SHIPOWNERS' TRUST, "D."	1920
ANGAS WARD, "SAN."	1920
SEAMEN'S HOSPITAL AID COMMITTEE FUND, "D."	1921
SHEERNESS BED, "D."	1921
SHANGHAI BED, "SAN."	1921

Name of Bed or Ward.	Year.
INCHCAPE WARD, "SAN."	1921
DUKE OF YORK WARD, "SAN."	1921
DUKE OF CONNAUGHT WARD, "SAN." ..	1921
THE ANGAS BED, "D."	1922
THE McEACHARN BED, "D."	1922
THE ORFORD-WALKER BED, "D." ..	1922
THE SWEDISH BED, "D."	1922
THE LAMBERT BED, "D."	1922
THE ANNIE BARNES BED, "D."	1922
THE ANNIE BARNES BED, "A.H." ..	1922
THE ANNIE BARNES BED, "SAN." ..	1922
SEAMEN'S HOSPITAL AID COMMITTEE BED No. 2, "D."	1923
SEAMEN'S HOSPITAL AID COMMITTEE BED No. 3, "D."	1923
THE DOUGLAS VERNON COW BED, "D."	1923
KING GEORGE'S FUND FOR SAILORS'—	
MOORSOM TRUST BED, No. 1, "D."	1923
MOORSOM TRUST BED, No. 2, "D."	1923
MOORSOM TRUST BED, No. 3, "T."	1924
SEAMEN'S HOSPITAL AID COMMITTEE BED No. 4, "D."	1924
McCARTHY MAIN BED, "D."	1924
McCARTHY MAIN BED, "T."	1924
SEAMEN'S HOSPITAL AID COMMITTEE BED No. 5, "D."	1925
KING GEORGE'S FUND FOR SAILORS'—	
A WARD NAMED, "D."	1925
BED ENDOWED, "T."	1925
HENRY H. WILLS BED, "T."	1925
CEYLON BED, "H.T.D."	1925
SCHOOLS BED, "A.H."	1925
JAMES NOURSE BED, "D."	1925
JAMES NOURSE BED, "T."	1925
PRUDENTIAL BED, "D."	1925
SEAMEN'S HOSPITAL AID COMMITTEE BED No. 6, "D."	1926
AILEEN CONGREVE BED No. 1, "D." ..	1926
KING GEORGE'S FUND FOR SAILORS, AILEEN CONGREVE BED No. 2, "D."	1926
CEYLON BED No. 2, "H.T.D."	1926.

£1,000 Endows a Bed in perpetuity.

TABLE showing the different Countries to which the In-patients treated by the Society belonged.

	From 1st Jan. to 1st Dec., 1925.	Total number since foundation.		From 1st Jan. to 31st Dec., 1926.	Total number since foundation.
			<i>Brought forward</i> ..	5,065	216,792
England	4,008	143,866	Ionian Isles	6
Scotland	225	17,781	Italy	12	1,849
Ireland	157	14,764	Jamaica	8	72
Wales	34	3,849	Japan	28	731
Channel Islands ..	4	684	*Latvia	1	12
Abyssinia	4	Madagascar	1	4
Aden	3	33	Madeira	4
Africa	50	1,454	Malay	1	47
Antigua	4	Malta	4	227
Arabia	16	211	Mauritius	4	100
Assyria	2	Mexico	8
Australia	57	1,050	Newfoundland	29
Austria	2,984	New Zealand	14	369
Azores	2	Norway	69	9,418
Barbados	1	63	Nova Scotia	1	9
Belgium	10	290	Palestine	15
Bermuda	10	Persia	12
Brazil	2	58	Peru	2
British Colonies (before detailed classification)	..	537	Philippines	6
British Guiana ..	4	51	Poland	2	55
Bulgaria	1	Portugal (including Goa)	24	1,454
Canada	10	2,661	Roumania	26
Cape Verde Islands	..	2	Russia	17	1,917
Ceylon	3	92	Samoa	6
Chili	28	St. Helena	1	7
China	31	1,877	St. Vincent	5
Cochin China	4	Seychelles	12
Corsica	2	Siam	1	6
Crete	4	Sierra Leone	1	24
Cuba	4	South Africa	20	230
Cyprus	26	South America	4	622
Curaçoa	1	South Sea Islands	306
Czechoslovakia ..	1	1	Spain	12	972
Denmark	14	3,357	Sweden	27	7,639
Dominica	1	Switzerland	2	73
East Indies	5,684	Straits Settlements	8
Egypt	2	109	Tasmania	2	44
*Esthonia	5	Trinidad	1	10
Finland	19	3,231	Turkey	1	140
France	9	1,264	Turkey in Asia	8
Germany	22	5,181	United States	19	4,556
Gibraltar	5	Uruguay	1
Greece	9	575	Venezuela	1
Greenland	1	West Indies	25	3,918
Holland	9	1,335	Zanzibar	6
Iceland	21	Born at Sea	228
India	365	2,623	Unknown	15	146
<i>Carried forward</i> ..	5,065	216,792	<i>Total</i>	5,382	252,132

* Previous to 1924, included in Russia.

LEGACIES RECEIVED.

		£	s.	d.	£	s.	d.
1823	John Forbes, Esq. (duty paid by Sir Chas. Forbes, Bart.) ..				1,000	0	0
1824	Thomas Warre, Esq. (duty deducted)	90	0	0			
..	William Nollekens, Esq., with interest	20	3	10			
					110	3	10
1828	Rev. J. Legrew, from Mrs. Phipps, deceased				50	0	0
1831	Mr. Matthew Capponi (Surgeon, R.N.)				97	9	5
1832	Adam Ahlback (a Patient)	10	0	0			
..	Captain Hugh Reid (duty deducted)	90	0	0			
..	William Simson, Esq. (duty deducted)	90	0	0			
					190	0	0
1833 to 1841	John Lydekker, Esq.	10,295	11	4			
..	Ditto stock	48,434	16	11			
..	Executors of the late J. H. Tritton, Esq.	18	0	0			
..	Sundries by Patients	16	6	2			
					58,764	14	5
1834	Mr. Richard Neale	81	9	0			
..	Thomas Snodgrass, Esq., Bank Stock	1,000	0	0			
					1,081	9	0
1835	Daniel Ince, Esq., with interest				393	19	1
1836	J. J. Holford, Esq. (free of duty)	100	0	0			
..	Emuel Basball, Seaman (a Patient)	21	10	3			
					121	10	3
1837	Miss Elizabeth Cook (duty deducted)	270	0	0			
..	Thomas Williams (a Patient)	15	0	0			
					285	0	0
1838	Colonel William Charles Alston (free of duty)	100	0	0			
..	Mrs Sarah Wakefield (duty deducted)	450	0	0			
..	Executors of the late Robert Manning, Esq., of Mexico ..	431	4	4			
					981		
1839	Sundries by Patients				29	15	6
1840	Mrs. Catherine Veronica Miller (less duty), stock	1,000	0	0			
..	Sir T. B. Mash	10	0	0			
..	Commander Otway	21	0	0			
					1,031	0	0
1841	Miss Mary Parish	91	19	0			
..	Captain John Renwick	90	0	0			
..	Thomas Barry, Esq. (free of duty)	100	0	0			
..	Charles Davy (duty deducted)	45	0	0			
					326	19	0
1842	Miss Brunton, Administratrix of William Brunton Esq. ..	485	0	9			
..	Mrs. Elizabeth Woodcock (free of duty), stock	400	0	0			
..	The Marquis of Hertford (duty deducted)	90	0	0			
..	Mrs. Mary Simmonds (duty free) stock	235	0	0			
..	Mrs. Elizabeth Salmon (duty free)	100	0	0			
..	Joseph Blyth, Esq. (duty deducted)	135	0	0			
..	F. P. Stubbs, Esq., and interest	503	6	8			
..	Anthony Baker (a Patient)	33	12	4			
					1,981	19	9
1844	James Clegg, Esq. (duty deducted)	900	0	0			
..	Solomon Levy, Esq., of Sydney, and interest	241	6	5			
..	Mr. William Waters	1,909	16	3			
					2,051	2	8
1845	Francis Baily, Esq. (duty deducted)	180	0	0			
..	Christian Tawk, Esq.	100	0	0			
..	Harry Charrington, Esq. (duty free)	500	0	0			
..	Robert Lowrey, Esq.	1,558	13	0			
..	Ditto stock	2,131	13	9			
..	Mrs. Ann Eaton, stock	200	0	0			
..	Mrs. Sharp	100	0	0			
..	John Moore, Esq.	30	0	0			
					4,800	6	9
1846	The late Captain Margoty (per his widow)	21	0	0			
..	Mrs. Margoty	45	0	0			
..	One-third of intended bequest of the late J. Somes, Esq. ..	333	6	8			
..	Christian Thornstedt (a Patient)	6	0	0			
					405	6	8

		£	s.	d.	£	s.	d.
1847	Henry Wright, Esq., with interest	596	12	8			
..	Captain John Locke, H.C.S. (duty deducted)	270	0	0			
					866	12	8
1849	Captain John Simpson, R.N.	18	0	0			
..	Robert Newman Hunt, Esq. (duty free)	500	0	0			
..	Rev. George Atwick (duty deducted), stock	1,372	10	6	1,890	10	0
1850	John Henry Peacock, Esq. (duty free)	100	0	0			
..	Lieut. C. C. Powell, R.N.	10	0	0			
..	Lieut.-Col. H. A. Purchas, H.C.S.—						
..	1st Instalment, 1850	1,166	4	10			
..	2nd .. 1854	137	8	10			
..	3rd .. 1893	47	2	2			
..	Vice-Admiral the Hon. D. P. Bouverie (duty free)	100	0	0			
..	Captain J. W. Trotter, R.N.	10	0	0			
..	D. Forbes (a Patient)	11	8	9			
..	Lady Colville	10	0	0			
..	Benjamin Hill, Esq., with interest	319	0	5			
..	James George Boucher, Esq.	100	0	0	2,011	5	0
1853	Capt. Edw. John Johnson, R.N.				45	0	0
1854	Miss Louisa Storck	200	0	0			
..	John Wild, Esq.	105	0	0			
..	Miss Elizabeth Lowry (duty deducted)	22	10	0	327	10	0
1855	T. A. Hewson, Esq., with interest	1,159	2	4			
..	Captain Rogers Lawrence	493	12	4	1,652	14	8
1856	John Markham Davison, Esq., R.N.	5	0	0			
..	Mrs. D. Kennedy, with interest	109	16	10			
..	Miss Charlotte Rebecca Howard, with interest	1,021	15	7	1,136	12	5
1857	Joseph C. Bourley, late Seaman on board the "Monarchy"	35	5	3			
..	Mrs. Moore (duty deducted)	270	0	0			
..	E. M. Van Butchell, Esq.	100	0	0			
..	Lady Scott (duty deducted)	90	0	0			
..	Captain Walter Pitcairn (duty deducted)	45	0	0			
..	Lord Middleton	100	0	0	640	5	3
1858	Edmund Clegg, Esq. (duty deducted)	90	0	0			
..	Mr. Samuel John Lowe (duty deducted)	87	3	6			
..	Capt. H. Fitzgerald, R.N., and interest (duty deducted)	9,551	14	2			
..	Thomas Dunbar, Esq. (duty deducted)	85	19	0			
..	Captain Le Blanc (duty deducted)	90	0	0			
..	Miss Mash, Seymour Place (duty deducted)	22	10	0			
..	Harry Osborn Cureton, Esq. (duty deducted), stock	900	0	0	10,827	6	8
1859	Miss Elizabeth Watham (duty deducted), stock	270	0	0			
..	George Holgate Foster, Esq.	1,000	0	0			
..	George Maguire, Esq. (duty deducted)	90	0	0			
..	James Cavan, Esq.	100	0	0			
..	Mr. Peter Macdonald	100	0	0			
..	James Harris Bartlett, Esq., and interest	98	19	4			
..	Ditto stock	782	2	10			
..	Charles Kelsall, Esq.	8	15	9			
..	Ditto stock	200	0	0			
..	Mrs. Mary Johnson, late of Marylebone	500	0	0	2,874	17	11
1860	Major-General Towers, stock	200	0	0			
..	Joshua Drinkald, Esq.	3,289	14	8			
..	Benjamin Thomas Crichton, Esq.	990	10	0			
..	Ditto stock	22,534	14	7	27,014	19	3
1861	William Goodson, Esq., Surgeon, R.N., stock	500	0	0			
..	Commander John Bowerbank, R.N. (duty deducted)	90	0	0			
..	Mrs. Sheddan Watson (duty deducted)	450	0	0			
..	George Weltden, Esq. (duty deducted)	90	0	0	1,130	0	0

			£	s.	d.	£	s.	d.
1862	Admiral Sir John West, K.C.B.				30	0	0
1864	James Navin, Esq.	90	0	0			
..	Mrs. Plampin, Admiral's Widow	13	3	3			
..	Ditto	stock (less duty)	1,000	0	0	1,103	3	3
1865	Henry D. Blyth, Esq.	500	0	0			
..	Mr. Matthew Eltham (Lighterman)	337	10	0			
..	F. R. Magenis, Esq.	200	0	0			
..	Richard Thornton, Esq. (duty free)	2,000	0	0			
..	J. G. Cole, Esq. (duty free)	100	0	0			
..	Miss M. E. Miller (duty free)	100	0	0	3,237	10	0
1866	William Borradaile, Esq. (duty free)	500	0	0			
..	Captain John Sykes, R.N. (duty free)	100	0	0			
..	George Wheelhouse, Esq., and interest	468	1	9			
..	James Gates, Esq.	87	12	6			
..	W. Stutters (late Patient)	24	12	2			
..	Captain A. D. White, with interest	49	9	9	1,229	16	2
1867	Madame de Bosset	450	0	0			
..	Mr. J. H. Cooper, Mariner (duty free)	100	0	0			
..	Miss W. M. Copp (duty free)	300	0	0	850	0	0
1868	Alexr. Brodie, Esq. (duty free), stock	200	0	0			
..	Felix Slade, Esq. (duty free)	100	0	0			
..	Richard Green, Esq., and interest	2,109	0	3	2,409	0	3
1869	W. T. Meyer, Esq.	300	0	0			
..	J. Griffith Frith, Esq.	360	0	0			
..	Lord Henry Seymour (share of bequest "aux Hospices de Londres et Paris") 1st instalment (1869)	£400	0	0			
..	2nd instalment (1870)	82	0	0			
..	3rd .. (1872)	100	0	0			
..	4th .. (1873)	83	0	0			
..	5th .. (1876)	17	0	0			
..	6th .. (1883)	34	0	0			
..	7th .. (1885)	115	0	0			
..	8th .. (1886)	7	10	0			
..	9th .. (1901)	25	0	0			
..	10th .. (1911)	9	0	0	872	10	0
..	William John Hall, Esq., and interest (duty deducted)	2,048	7	0			
..	Captain D. O'Brien (duty deducted)	90	0	0			
..	Dowager Lady Truro, stock	3,837	10	2			
..	1st instalment (1869)	£1,969	8	3			
..	2nd .. (1889)	682	17	0	2,652	5	3
..	William Hollins, Esq.	50	11	6			
..	Ditto	stock	500	0	0	10,711	3	11
1870	Miss Lucretia Tuckett (free of duty)	100	0	0			
..	Captain William Rayner Bes (duty deducted)	100	0	0	200	0	0
1871	Miss Sarah Dorset	89	13	4			
..	Bridger Cattley, Esq.	100	0	0	189	13	4
1872	Mrs. Charlotte Elizabeth Walmesley	100	0	0			
..	Mrs. Sarah Ann Humphreys	100	0	0	200	0	0
1873	James Prosser, Esq.	87	4	2			
..	Thomas Oak, Esq.	1,094	5	8			
..	Ditto	stock	1,002	10	11			
..	Miss Catherine Prosser, stock	100	0	0			
..	Miss Margaretta Jane Robertson	450	0	0			
..	Henry Adams (late Patient)	2	19	0	2,736	19	9
1874	James Blyth, Esq.	200	0	0			
..	John Quay (late Patient)	3	18	6	203	18	6

						£	s.	d.	£	s.	d.
1875	Mrs. Sills Gibbons (duty free)	300	0	0			
..	Mrs. Elizabeth Liveing	10	0	0	310	0	0
1876	Mr. John Henderson, Pilot	10	0	0			
..	Mrs. S. Greene	19	19	0			
..	Mrs. Murray (free of duty)	100	0	0			
..	Miss M. Wales	15	0	0			
..	Thomas Kittrick, Esq.	19	19	0			
..	Admiral Sir W. Bowles, K.C.B.	180	0	0			
..	John Pitcairn, Esq.	19	19	0	364	17	0
1877	Hugh Davies Griffith, Esq. (duty free)	1,000	0	0			
..	Thomas Boys, Esq. (to purchase an annuity for 10 years)	5,524	1	5			
..	Ditto (balance)	113	1	8			
..	Ditto (additional in 1888)	3	5	4	6,640	8	5
1878	Robert Alexander Gay, Esq. (free of duty)	100	0	0			
..	William Schaw Lindsay, Esq. (free of duty)	200	0	0	300	0	0
1879	Sir Burton Macnamara (duty free)	528	16	0			
..	H. N. Courtney, Esq. (duty free)	100	0	0			
..	Captain Geo. Blanc, R.N. (duty free)	200	0	0			
..	Richard Thornton West, Esq. (duty free)	500	0	0			
..	Edward Winstanley, Esq.	10	0	0	1,338	16	0
1880	Miss Ann Kirkup	200	0	0			
..	William Howard, Esq.	100	0	0			
..	William Boyd (a Sailor)	23	1	4	323	1	4
1881	James Bentley, Esq., J.P.	500	0	0			
..	John Pollard, Esq.	18	19	0			
..	John Andrew Jones, Esq.	1,029	17	0	1,548	16	0
1882	Charles Richard Craddock, Esq.	1,000	0	0			
..	Admiral Henry Edward Coffin	90	0	0	1,090	0	0
1883	Hans Christian Pedersen (a Danish Patient)	6	0	0			
..	Henry Couchman, Esq.	200	0	0			
..	Robert Barnard Fountain, Esq.	90	0	0			
..	George Tierney, Esq.	5,000	0	0	5,296	0	0
1884	Capt. Wm. Cloughton	100	0	0			
..	G. W. Nugent, Esq.	200	0	0			
..	Mrs. Bean	200	0	0	500	0	0
1885	Henry Skynner, Esq.				52	10	0
	Freehold Property in Edith and York Streets, Hackney Road—Ground Rents of £27 12s. per annum.										
	Small Freehold Property at Kingston-on-Thames.										
1886	Joseph Greaves, Esq.	50	0	0			
..	Thos. Mackrell, Esq.	250	0	0			
..	Ditto (balance)	250	0	0			
..	John Kelly (a Sailor)	12	19	3	562	19	3
1887	John Aylwin, Esq.	100	0	0			
..	Benaiah Gibb, Junr., Esq.	100	0	0	200	0	0
1888	Capt. W. G. N. King, R.N.	100	0	0			
..	Mrs. King	270	0	0			
..	C. M. Shepherd, Esq.	100	0	0			
..	Miss Mary Foster	9	0	0			
..	Robert Sutherland, Esq.	500	0	0			
..	Mrs. Elizabeth Douglas—										
	1st instalment (1883)	£400	0	0			
	2nd „ (1889)	35	2	1			
						435	2	1			
..	Capt. H. A. Perkins, R.N.	90	0	0	1,504	2	1

		£	s.	d.	£	s.	d.
1889	T. E. Hemming, Esq.				1,386	10	2
1890	Joe Bower Boothroyd (Merchant Seaman)	90	0	0			
..	William Christopher Salter, Esq.	1,800	0	0			
..	Lady R. A. Bentinck	50	0	0			
..	Alexander Brown (Patient)	5	0	0			
..	Henry John Hunt, Esq.	250	0	0			
..	John Field, Esq.	432	18	10			
..	Ditto stock	4,406	5	9	7,094	4	7
1891	Thomas Bennett, Esq.	100	0	0			
..	Jacob Vincent, Esq.	100	0	0			
..	Lady Diana Belcher	300	0	0			
..	Miss Amelia Tyssen Amherst	30	0	0			
..	Marquis of Ely, with interest	222	16	2			
..	Richard Willats, Esq.	90	0	0	812	16	2
1892	Robert Alger Newbon, Esq.	899	8	9			
..	Mrs. Henning	50	0	0			
..	Capt. Jas. D. Dinsdale	100	0	0			
..	Mrs. Ponsford	500	0	0	1,549	8	9
1893	George Henry Browne, Esq.	90	0	0			
..	Thomas Watkins, Esq.	500	0	0	590	0	0
1894	Mrs. Sarah Marshall Jackson	250	0	0			
..	Robert Bussell, Esq.	200	0	0			
..	Lord Crewe	100	0	0			
..	Mrs. Ann Brown	500	0	0	1,050	0	0
1895	John Davis, Esq.	500	0	0			
..	Capt. T. Narramore Were	100	0	0			
..	Henry Hewetson, Esq.	105	0	0			
..	Mrs. Eldridge—Freehold Houses, Nos. 42 and 43, Douglas Place, Bayswater				705	0	0
1896	Mrs. Rosamond Bright Seton-Smith	450	0	0			
..	Martin Stuhre (late Hospital Carpenter)	2	10	0			
..	Capt. Richard Braine	100	0	0	552	10	0
1897	George Edwin Williams, Esq.	400	0	0			
..	William Waller, Esq.	3,000	0	0			
..	George Augustus Maiden, Esq.	468	17	0			
..	James Bourne, Esq.	444	18	1			
..	Thomas Brown Young, Esq.	2,036	12	10			
..	Samuel Salmon (Patient)	36	5	4	6,386	13	3
1898	Richard Gibbs, Esq.	500	0	0			
..	James Jaque Crawford (late Patient)	4	4	6			
..	James Connelly (late Patient)	50	0	0			
..	John Kelly (Seaman)	21	17	4			
..	Joel Wolff, Esq.	250	0	0			
..	Francis Gilbert, Esq.	2,000	0	0			
..	Miss Letitia Caroline Susannah Gannon	200	0	0	3,026	1	10
1899	Honourable Mrs. Louisa Hay	100	0	0			
..	Peter Lee (late Patient)	9	16	11			
..	Mrs. Mary Ann Perrins Perrins	500	0	0			
..	Mrs. Sarah Beach	300	0	0			
..	Baron Ferdinand de Rothschild	3,235	8	8			
..	Martin Pratt, Esq.	500	0	0	4,645	5	7
1900	William Wilson, Esq.	5,542	3	7			
..	W. McLellan (late Patient)	5	0	0			
..	John Wansey Nathaniel Bentley, Esq.	500	0	0			
..	Miss N. B. Price	25	0	0			
..	R. B. Sanders, Esq.	100	0	0			
..	John Mackie, Esq., stock	500	0	0	6,672	3	7

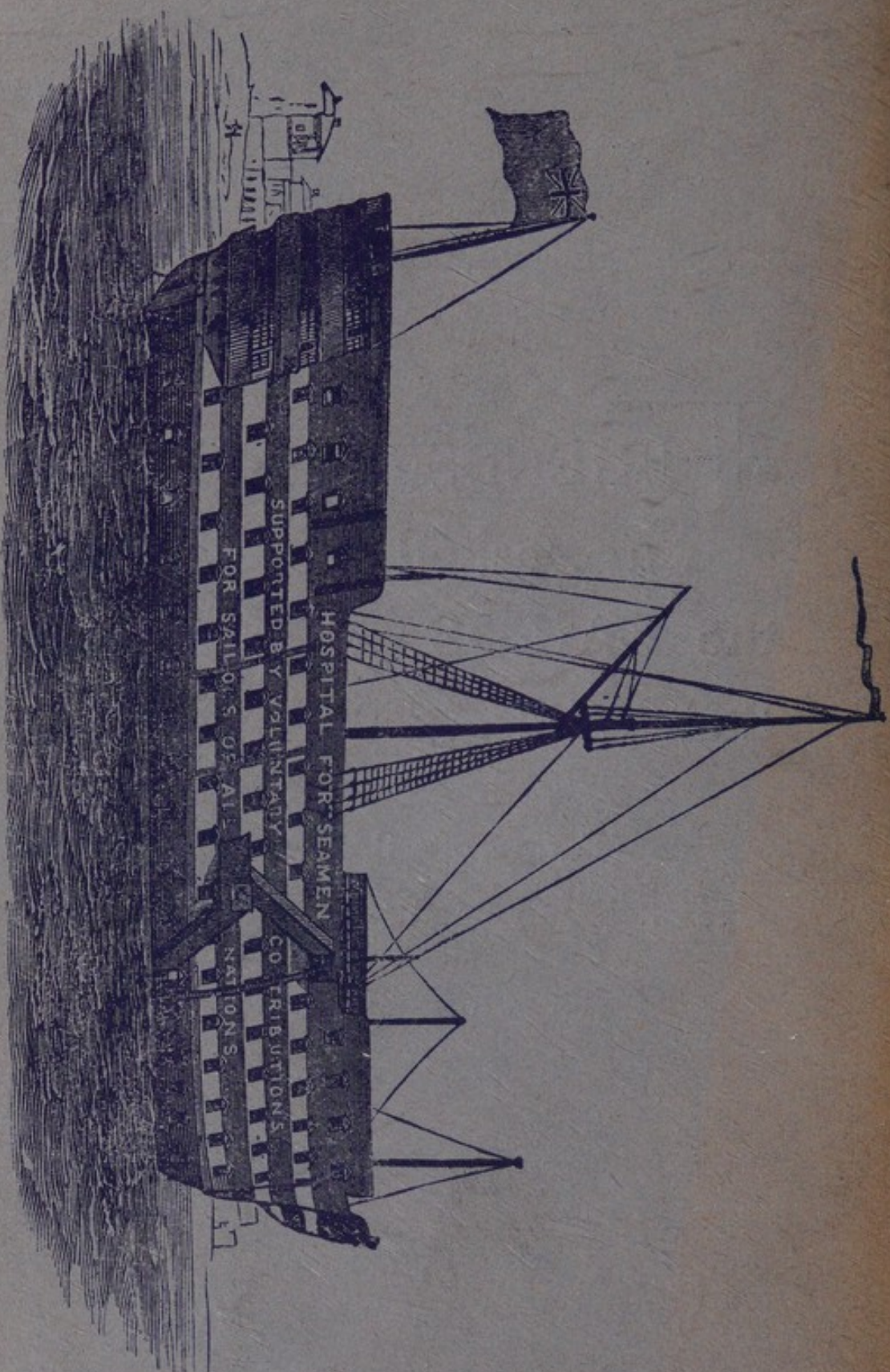
						£	s.	d.	£	s.	d.
1901	Lewis Alfred Flint, Esq.	180	0	0			
..	Mrs. Eliza Mackenzie	21	0	0			
..	Lord Henry Seymour	25	0	0			
..	Richard Bowerman West, Esq.	500	0	0			
..	Miss Maria Brown	45	0	0			
									771	0	0
1902	Mrs. Elizabeth Garrard	86	17	0			
..	Edward Jones, Esq.	45	0	0			
..	Benjamin Buck Greene, Esq.	100	0	0			
..	Frederick Gilbert, Esq.	2,000	0	0			
..	Miss Angelina West	50	0	0			
..	Mrs. Isabella Campbell	500	0	0			
..	Francis Thos. Freeman, Esq.	1,000	0	0			
..	John Hewling Luson, Esq., stock	180	0	0			
									3,961	17	0
1903	Bridger Cattley, Esq.	68	18	1			
..	Frederick Garrard, Esq.	55	14	10			
..	Ditto stock	4,887	2	10			
..	Richard Bishop, Esq.	300	0	0			
..	Capt. Wm. Cashman, R.N.	450	0	0			
..	John Henry Reed, Esq.	19	19	0			
..	Thomas Brown Young, Esq.	74	9	4			
..	Ditto stock	1,820	1	8			
									7,676	5	9
1904	Admiral W. A. J. Heath, C.B.	100	0	0			
..	William Markham, Esq.	45	0	0			
..	Mr. John Williams (late Patient)	152	4	2			
..	Robert Goulding Ledger, Esq.	100	0	0			
..	Archibald Day, Esq.	200	0	0			
..	Theodore Lloyd, Esq.	1,000	0	0			
..	John Appleton, Esq., stock	1,319	7	8			
									2,916	11	10
1905	G. W. Tripp, Esq.	200	0	0			
..	J. T. Smith, Esq.	1,000	0	0			
..	Mrs. M. J. Otter	180	0	0			
..	C. H. Lear, Esq.	550	0	0			
..	J. H. Lucking, Esq.	1,000	0	0			
..	Lady McCulloch	150	0	0			
..	Mrs. E. S. Smalbridge	90	0	0			
									3,170	0	0
1906	Horace Harral, Esq.	420	0	0			
..	Wm. Buckwell, Esq.	500	0	0			
..	Fredk. Chas. Pickernell, Esq.	2,000	0	0			
									2,920	0	0
1907	W. T. Carver, Esq.	200	0	0			
..	Robert Barnes, Esq., M.D., F.R.C.S.	450	0	0			
..	Lady Cox	100	0	0			
..	Miss Caroline Everard	500	0	0			
..	J. L. Toole, Esq.	90	0	0			
									1,340	0	0
1908	Mrs. S. A. White	100	0	0			
..	Jesse Jacob, Esq.	100	0	0			
..	H. D. Griffith, Esq.	100	0	0			
..	Miss Caroline Everard	76	19	8			
..	G. Fielder, Esq.	383	6	1			
..	Mrs. Eliza Steedman	300	0	0			
									1,060	5	9
1909	W. White, Esq.	100	0	0			
..	J. A. Yates, Esq.	380	8	1			
									480	8	1
1910	Wm. Buckwell, Esq.	327	19	1			
..	Wm. Bevan, Esq.	1,000	0	0			
..	H. Wray Browne, Esq.	25	0	0			
..	Louisa Sophia Lady Goldsmid	100	0	0			
..	H. Keen, Esq.	20	0	0			
..	Trustees of "Zunz" Bequest	3,000	0	0			
									4,472	19	1

							£	s.	d.	£	s.	d.
1911	Louisa Sophia Lady Goldsmid (2nd Instalment)	200	0	0			
..	D. J. Woodman	450	0	0			
..	E. Spencer	100	0	0			
..	Thomas Brandreth (and interest)	522	4	9			
..	Lord Henry Seymour	9	0	0			
..	James Wiseman	10	0	0			
..	Mrs. Mary Ann Fitzherbert Fraser	4,500	0	0			
										5,791	4	9
1912	Mrs. Jolit	10	0	0			
..	Miss Elizabeth Manning	36	0	1			
										46	0	1
1913	F. Nelson (late Patient)	35	0	0			
..	J. Macdonald (late Patient)	30	18	11			
										65	18	11
1914	Tarbett Fleming	375	0	0			
..	Isabella Boustred	882	9	5			
..	Emily Boustred	772	13	11			
										2,030	3	4
1915	Wm. Bevan, Esq. (2nd Instalment)	1,452	1	6			
..	Miss S. A. Oxtoby (per her Executor)	1,000	0	0			
..	John Vicary, Esq. (per his Executor)	180	0	0			
..	Alexander Christie, Esq.	100	0	0			
..	Charles Nelson, Esq.	12	12	8			
..	Miss Marion Allen	200	0	0			
..	Horace Percy Sprigens, Esq.	179	19	5			
										3,124	13	7
1916	Tarbett Fleming (2nd Instalment)	115	0	0			
..	Rev. Alfred G. K. L'Estrange	810	0	0			
..	Rt. Hon. Arnold Morley	250	0	0			
										1,175	0	0
1917	S. H. P. Glendinning	40	0	0			
..	A. Gearing	100	0	0			
..	J. T. Hart	50	0	0			
..	G. H. Beaver	500	0	0			
										690	0	0
1918	H. J. Chapman	50	0	0			
..	John Law	1,000	0	0			
..	T. G. Ivey	125	0	0			
										1,175	0	0
1919	Robert Nichol	100	0	0			
..	S. L. P. Geldart	271	15	7			
..	Montague George Jessett	121	2	4			
..	Rt. Hon. Arnold Morley (balance)	6	11				
..	Henry Harrison	3,000	0	0			
..	Thomas Hewetson	2,710	11	2			
										6,203	16	0
1920	Mrs. Medley	4,739	5	1			
..	F. G. Ivey	100	0	0			
..	Thos. Munday	250	0	0			
..	Lady Louise Goldsmith, Trustees of	240	0	0			
..	J. H. A. Frisby	25	0	0			
										5,354	5	1
1921	Henry Tyler	100	0	0			
..	Mrs. Head	500	0	0			
..	D. M. Currie	900	0	0			
..	Mrs. Haines	20	0	0			
..	W. E. Holding	100	0	0			
..	Robert Jardine	200	0	0			
..	Rev. Francis Allen Minnett	20	0	0			
..	Major Thomas Bott	381	0	9			
..	W. Fox Batley	205	12	0			
..	H. A. Frisby (Exors. of)	200	0	0			
										2,626	12	9
1922	Wm. Ashe	100	0	0			
..	Miss S. G. Dewe	258	13	4			
..	J. C. Geiselbrecht	168	2	6			
..	Mrs. Dowson	522	0	0			
..	Mrs. Medley (Balance of Legacy)	14	4	0			
..	Major Thomas Bott	100	0	0			
..	Sir Perceval Nairne (formerly Chairman, S. H. S.)	200	0	0			
..	Captain Wm. Cosens	100	0	0			
										1,462	19	10

		£	s.	d.	£	s.	d.
1923	Cecil B. Miller	125	0	0			
	George Burdick	100	0	0			
	Alfred John Hirsch	1,000	0	0			
	Mrs. Lupton	1,000	0	0			
	William F. Goodiffe	450	0	0			
	Major Thomas Bott	200	0	0			
	Sir Frederick Cleeve, K.C.B. (formerly Chairman, S. H. S.)	200	5	0			
	Authorne Harris Wickenden (1st Instalment)	7,000	0	0			
	David John Hewett	100	0	0			
	Beatrice Atkinson	50	0	0			
	Tomyns Reginald Browne	52	4	9			
	Jesse Matthew Skudder	417	5	8			
					10,694	15	5
1924	Beatrice Atkinson	50	0	0			
	Authorne Harris Wickenden (2nd Instalment)	2,000	0	0			
	Thomas Bott	175	0	0			
	Cecilia Wright	90	0	0			
	Edward Felix White	500	0	0			
	The Hon. Louisa Henrietta Rennell	1,000	0	0			
	Matilda Lamacrate Putt	450	0	0			
	Frederic Fountain	500	0	0			
	Camilli Anna Olympia Bertie Roberts	300	0	0			
	Alfred George White	17	18	1			
	Sarah Thornton (Value of Lease of 67 Vanbrugh Park) ..	500	0	0			
					5,582	18	1
1925	J. Nourse	3,733	6	8			
	A. H. Wickenden (3rd Instalment)	576	13	5			
	Geo. W. Tyser	509	6	0			
	Park Lattey	102	4	7			
	F. N. Tucker	50	0	0			
	C. E. Morris	25	0	0			
					4,996	10	8
1926	Mildred M. Pontifex	900	0	0			
	Thomas Bott (5th Instalment)	313	13	9			
	R. Meggitt	300	0	0			
	James Nourse	234	11	9			
	Sophia Hewitt	250	0	0			
	James Patterson Traill	225	0	0			
	A. Gearing	194	18	3			
	B. Calmar	150	0	0			
	Katharine L. Ricketts	150	0	0			
	Mathilda C. F. Arnold	100	0	0			
	Esther Mary E. Catline	100	0	0			
	Dame Florence E. Fermor Hesketh	100	0	0			
	Mary Clilverd	100	0	0			
	Lord Leith of Fyvie	100	0	0			
	The Hon. Lady Tracey	100	0	0			
	Agnes Zimmermann	100	0	0			
	Charles F. Preston	90	0	0			
	Francis Brown	30	0	0			
	Fanny E. Finchette	29	13	3			
	Elizabeth Dunn	25	0	0			
					3,592	17	0

FRIENDS of the Hospital
are asked to remember
the **SAILOR** when making
their Wills.

(Form of Bequest appears on
pages 24b and 24c.)



HOSPITAL SHIP, "DREADNOUGHT,"
FORMERLY LYING OFF GREENWICH