

**Annual report : 103rd (1923) / Seamen's Hospital Society "Dreadnought"
for sick and injured sailors.**

Contributors

Seamen's Hospital Society "Dreadnought" for Sick and Injured Sailors.

Publication/Creation

[London] : [Seamen's Hospital?], 1923

Persistent URL

<https://wellcomecollection.org/works/qdqepec3n>

License and attribution

This work has been identified as being free of known restrictions under copyright law, including all related and neighbouring rights and is being made available under the Creative Commons, Public Domain Mark.

You can copy, modify, distribute and perform the work, even for commercial purposes, without asking permission.



Wellcome Collection
183 Euston Road
London NW1 2BE UK
T +44 (0)20 7611 8722
E library@wellcomecollection.org
<https://wellcomecollection.org>

P. 30378

AS. 41

Don 11755

AS. 43



ABRIDGED REPORT.

THE

Seamen's Hospital Society,

Incorporated by Act of Parliament, 3^d Gul. IV., Cap. IX.

"DREADNOUGHT,"
GREENWICH.

ESTABLISHED 1821.

FOR WOUNDED, SICK, OR INJURED SAILORS,
SUPPORTED BY VOLUNTARY CONTRIBUTIONS.

ONE HUNDRED & THIRD ANNUAL REPORT

From January 1st to December 31st, 1923.

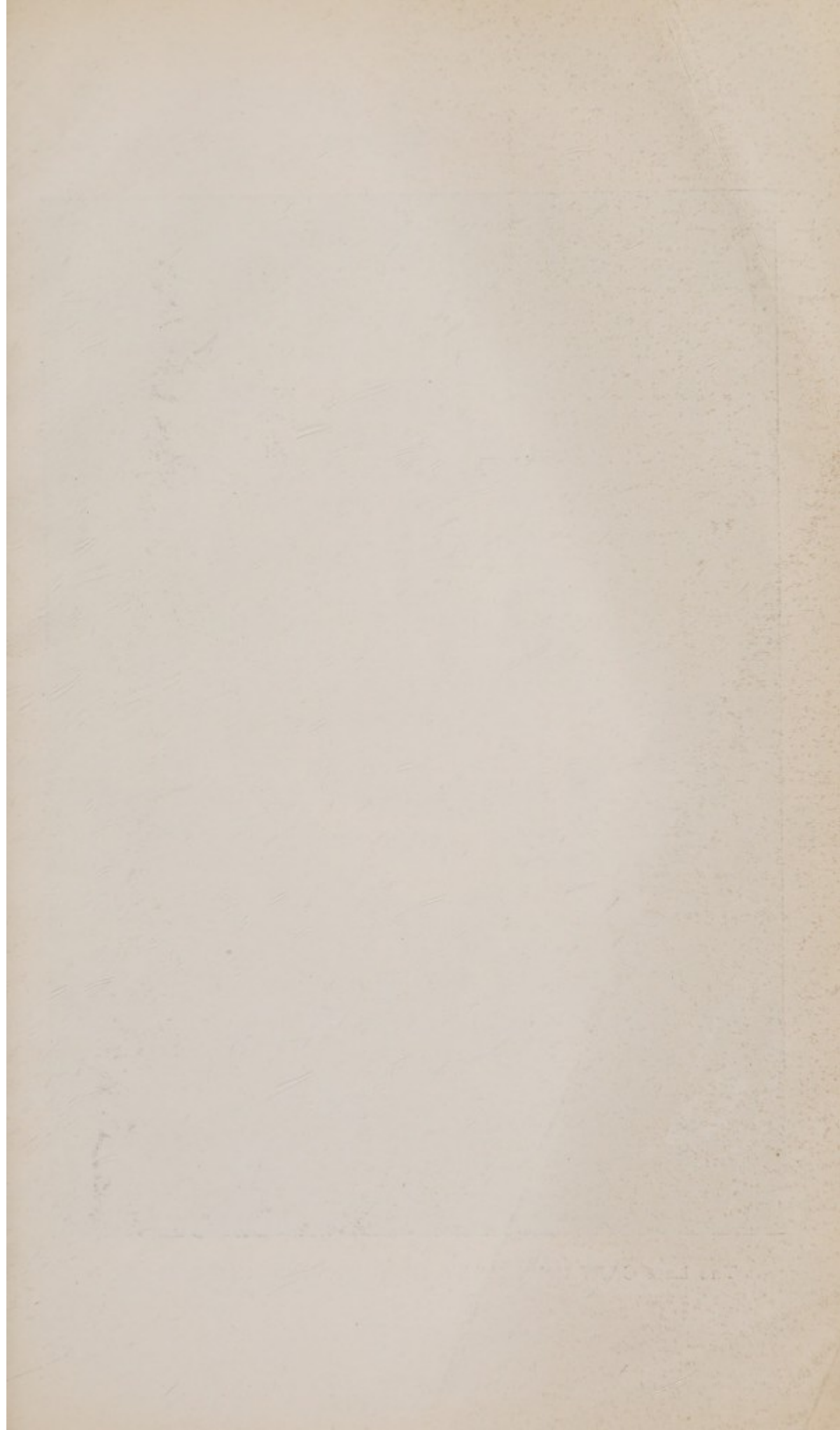
London :

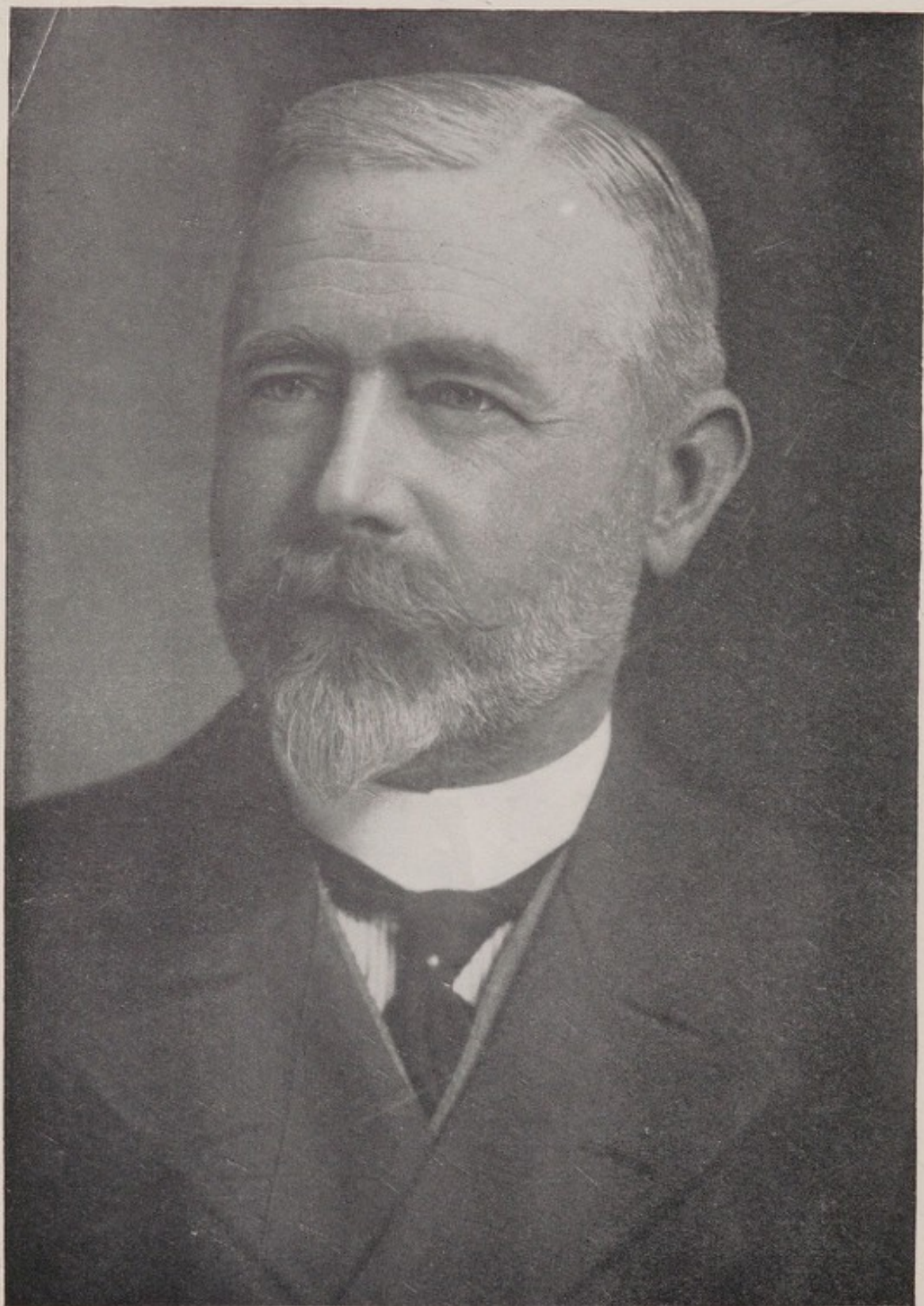
PRINTED BY E. G. BERRYMAN & SONS, LTD.,
BLACKHEATH ROAD, GREENWICH, S.E.10.

1924.



22501731784





The Late CAPTAIN HENRY BRERETON HOOPER, R.I.M.

ABRIDGED REPORT.

THE
SEAMEN'S HOSPITAL SOCIETY,

Incorporated by Act of Parliament, 3^d Gul. IV., Cap. IX.

"DREADNOUGHT,"
GREENWICH.

ESTABLISHED 1821.

FOR WOUNDED, SICK, OR INJURED SAILORS,
SUPPORTED BY VOLUNTARY CONTRIBUTIONS.

ONE HUNDRED AND THIRD ANNUAL REPORT

From January 1st to December 31st, 1923.

London:

PRINTED BY E. G. BERRYMAN & SONS, LTD.,
BLACKHEATH ROAD, GREENWICH, S.E.10.

1924.

WELLCOME
LIBRARY
Ann Rep
WX28
.BC5
S43
1923

ESTABLISHMENT OF THE SEAMEN'S HOSPITAL SOCIETY.

I.—“Dreadnought” Seamen's Hospital, Greenwich, S.E.

250 Beds and Out-Patient Department. Open day and night.

Tel. Address—“DREADNOUGHT, GREENWICH.”

Telephone—GREENWICH 368, 369, 370.

II.—Albert Dock Hospital, E.

(Station—Connaught Road.)

50 Beds and Out-Patient Department. Open day and night.

Telephone—EAST 533.

III.—Hospital for Tropical Diseases, Endsleigh Gardens, N.W.

50 Beds. *(Station—Euston Square.)*

Tel. Address—“PLASMODIUM, EUSROAD, LONDON.”

Telephone—MUSEUM 3326, 3327, 3328.

IV.—Tilbury Hospital, Tilbury Docks, Essex.

17 Beds and Out-Patient Department. Open day and night.

In course of enlargement.

(Station—Tilbury.)

Telephone—TILBURY 520.

V.—King George's Sanatorium for Sailors, Bramshott, Hants.

80 Beds. *(Station—Liphook.)*

Telephone—LIPHOOK 53.

VI.—The Angas Convalescent Home, Cudham, Kent.

30 Beds. *(Station—Orpington.)*

Telephone—BIGGIN HILL 3.

VII.—East & West India Docks Dis- pensary, East India Dock Road, E.

Open daily, Sundays excepted, from 9 to 9.30 a.m.

VIII.—The London School of Tropical Medicine, Endsleigh Gardens, N.W.

(Station—Euston Square.)

Tel. Address—“PLASMODIUM, EUSROAD, LONDON.”

Telephone—MUSEUM 3326, 3327, 3328.

It is the desire of the Committee that the Public shall visit the
Hospitals, Home, Dispensary, and School.

NO ADMISSION TICKET IS REQUIRED.

CALENDAR FOR 1924-1925.

1924. MARCH.

- Mon. 3. Committee Meeting.
 „ 10. Annual Court.
 „ 17. Committee Meeting.

APRIL.

- Mon. 14. Quarterly Court.

MAY.

- Mon. 12. Committee Meeting.

JUNE.

- Mon. . Committee Meeting.

JULY.

- Mon. 14. Quarterly Court.

AUGUST.

- Mon. 11. Committee Meeting.

1924. SEPTEMBER.

- Mon. 8. Committee Meeting.

OCTOBER.

- Mon. 13. Quarterly Court.

NOVEMBER.

- Mon. 10. Committee Meeting.

DECEMBER.

- Mon. 8. Committee Meeting.

1925. JANUARY.

- Mon. 12. Quarterly Court.

FEBRUARY.

- Mon. 9. Committee Meeting.
-

The Ordinary Meetings of the Committee are held at the Chamber of Shipping, 26, St. Mary Axe, E.C., at 4.30 p.m.

The Quarterly Courts are held immediately after the meeting of the Committee. The Annual Court is held at some convenient place, which is fixed by the Committee and duly advertised.

Seamen's Hospital Society.

("Dreadnought.")

Form for Remittance of Subscription or Donation
to the Hospital Funds.

To the Secretary,
Seamen's Hospital, Greenwich.

I enclose herewith cheque for £ _____ as a

Subscription (or) Donation.

Name _____

Address _____

Date _____

Cheques to be crossed "Williams Deacon's Bank," or "The Westminster Bank, Ltd."

W.S.

This Order may be withdrawn at any time.

Your Bankers and send it to the Secretary, Women's Hospital Society, Greenwich, S.E.

NOTE—You will greatly assist the Collection of your Subscription if you will kindly fill in this Order on



Amount

Value

Amount in words

Women's Hospital Society ("Dorchester") Greenwich, S.E., and continue the

E.C. Order for the Women's

Please pay to Messrs William Jackson Bank, Limited, 20, Bishop Lane,

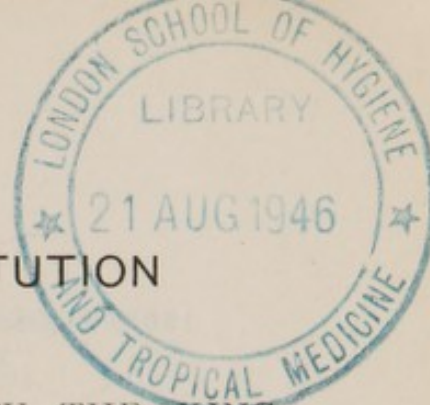
of

1891

BANKERS' ORDER.

OFFICERS OF THE INSTITUTION

For 1924-1925.



Patron and Patroness.

- V.P., 1890. }
P., 1910. } HIS MOST GRACIOUS MAJESTY THE KING.
1910. HER MOST GRACIOUS MAJESTY THE QUEEN.

Vice-Patron.

1913. H.R.H. THE PRINCE OF WALES, K.G.

President.

1921. COMMANDER HIS ROYAL HIGHNESS THE
DUKE OF YORK, K.G., K.T., G.C.V.O., R.N.

Past President.

- P., 1906. }
P.P., 1911. } HIS GRACE THE DUKE OF MARLBOROUGH,
K.G.

Vice-Presidents.

1896. THE RIGHT HON. VISCOUNT COWDRAY.
1902. THE RIGHT HON. AND RIGHT REV. THE LORD
BISHOP OF LONDON, K.C.V.O.
1902. SIR JOHN CRAGGS, M.V.O.
1907. THE MOST HON. THE MARQUIS OF SALISBURY,
K.G.
1907. THE LORD HUGH CECIL, M.P.
1908. DANIEL DANIELSSON, Esq.
1912. SIR WILLIAM BENNETT, K.C.V.O., F.R.C.S.
1912. THE RIGHT HON. AUSTEN CHAMBERLAIN, M.P.
C., 1900 }
V.P., 1913. } T. IRVINE ROWELL, Esq., C.M.G., M.D.
C., 1902. } ADMIRAL OF THE FLEET THE RIGHT HON. SIR
V.P., 1913. } E. H. SEYMOUR, G.C.B., O.M.
C., 1904. }
V.P., 1913. } ADMIRAL SIR ROBERT HARRIS, K.C.B., K.C.M.G.
1914. CAPT. SIR H. ACTON BLAKE, K.C.M.G., K.C.V.O.
(*Deputy Master of Trinity House*).
1915. THE RIGHT HON. VISCOUNT DEVONPORT (*Chair-*
man of the Port of London Authority).
1916. MAJOR-GENERAL F. L. LESSARD, C.B.
C., 1909 }
V.P., 1920. } GENERAL THE HON. SIR REGINALD TALBOT,
K.C.B.
1921. THE RIGHT HON. VISCOUNT MILNER, K.G.,
G.C.B., G.C.M.G.
1921. THE RIGHT HON. VISCOUNT INCHCAPE, G.C.M.G.,
K.C.S.I., K.C.I.E.
1923. SIR NORMAN HILL, BT. (*Chairman of the Governing*
Body of the Lascar Fund).
1924. THE RIGHT HON. LORD SOUTHBOROUGH, G.C.B.,
G.C.M.G., G.C.V.O., K.C.S.I.

Trustees.

- C., 1896. }
T., 1907. } COMMANDER GEORGE HODGKINSON, R.N.
V.P., 1914. }
T., 1915. } CAPT. SIR H. ACTON BLAKE, K.C.M.G., K.C.V.O.
C., 1914. }
T., 1922. } J. CYRIL NAIRNE, Esq.

AND THE OFFICIAL TRUSTEES OF CHARITABLE FUNDS.

Treasurer.

1903. COLONEL SIR ROBERT WILLIAMS, Bt., M.P.,
20, Birchin Lane, London, E.C.3.

Committee of Management.

C., 1905.) CAPTAIN SIR ARTHUR W. CLARKE, K.B.E.
Dep. Ch., 1915.) (Elder Brother of Trinity House), Chairman.
Ch., 1922.)
C., 1906.) Sir ION HAMILTON BENN, Bt., C.B., D.S.O.
Dep. Ch., 1923.) Deputy Chairman.

1914. C.J. BRIGHTMAN, Esq., O.B.E.	1912. C. F. LEACH, Esq.
1916. SIR R. HAVELOCK CHARLES, G.C.V.O., K.C.S.I.	1909. E. LYDEKKER, Esq.
1920. SIR BENJAMIN CHAVE, K.B.E.	1923. REAR-ADMIRAL GEORGE R. MANSELL, C.B.E., M.V.O. (Elder Brother of Trinity House).
1911. ADMIRAL SIR FREDERIC W. FISHER, K.C.V.O.	1913. H. T. MOORE, Esq.
1912. THE RIGHT HON. EARL GRANVILLE, G.C.V.O.	1914. J. CYRIL NAIRNE, Esq.
1896. COMMANDER GEORGE HODG- KINSON, R.N.	1898. SIR HERBERT READ, K.C.M.G., C.B. (Colonial Office).
1923. VICE-ADMIRAL SIR GEORGE P. W. HOPE, K.C.M.G., C.B. (President of Royal Naval College).	1909. SIR CHAS. H. R. STANSFIELD, C.B.
1924. CAPTAIN A. M. HUGHES.	1914. REV. F. J. TACKLEY, M.A. (Vicar of Greenwich).
1916. ADMIRAL OF THE FLEET SIR HENRY JACKSON, G.C.B., K.C.V.O., F.R.S.	1924. COL. F. H. D. C. WHITMORE, C.M.G., D.S.O.
1916. REAR-ADMIRAL E. P. E. JERVOISE, C.B.E.	1911. CAPTAIN EDMUND WILDY, O.B.E., V.D., R.N.V.R.
	1909. SIR JOHN WIMBLE, K.B.E.

Finance Sub-Committee.

J. CYRIL NAIRNE, Esq., Chairman.
SIR ION HAMILTON BENN, Bt., C.B., D.S.O., *ex-officio*.
CAPTAIN SIR ARTHUR W. CLARKE, K.B.E., *ex-officio*.
COMMANDER GEORGE HODGKINSON, R.N.
REAR-ADMIRAL G. R. MANSELL, C.B.E., M.V.O.
H. T. MOORE, Esq.
CAPTAIN E. WILDY, O.B.E., V.D., R.N.V.R.

Honorary Counsel.

1877. JOHN LYDEKKER, Esq.,
Barrister-at-Law.

Solicitor.

1921. PERCEVAL R. A. BAKER, Esq.,
3, Salter's Hall Court, E.C.

Auditors.

1909. MESSRS. PRICE, WATERHOUSE & Co.,
Chartered Accountants,
3, Frederick's Place, E.C.

Architects.

1890. MESSRS. YOUNG & HALL,
17, Southampton Street,
Bloomsbury Square, W.C.

Bankers.

1821. WILLIAMS DEACON'S BANK, LIMITED.
20, Birchin Lane, London, E.C.

1908. WESTMINSTER BANK, LTD.,
Greenwich.

Subscriptions and Donations may be sent to either Bank.

Secretary.

1887. SIR JAMES MICHELLI, C.M.G.

Assistant Secretary.

1919. R. E. V. BAX, Esq., M.A., Oxon., Barrister-at-Law.

Secretary to the Shipping Department.

Accountant, 1913. } ALBERT A. PAYNE, Esq.
 Sec. Ship. Dept., 1924. }

Accountant.

1923. L. F. LAND, Esq.

Steward.

1923. F. A. LYON, Esq., B.A., Oxon.

Dreadnought Hospital, Greenwich.

Consulting Physicians.

Physician, 1905. } SIR DYCE DUCKWORTH, Bt., M.D., LL.D.,
 Consult. Physician, 1917. } F.R.C.P.
 Physician, 1905. } SIR JOHN ROSE BRADFORD, K.C.M.G., C.B.,
 Consult. Physician, 1919. } F.R.S., M.D., F.R.C.P.

Consulting Surgeons.

Surgeon, 1905. } SIR WILLIAM BENNETT, K.C.V.O., F.R.C.S.
 Consult. Surg., 1912. }
 Surgeon, 1896. } W. TURNER, Esq., M.S. (Lond.), F.R.C.S.
 Consult. Surg., 1919. }
 Asst. Surg., 1905. }
 Surgeon, 1911. } E. ROCK CARLING, Esq., F.R.C.S.
 Consult. Surg., 1919. }
 Assist. Surg., 1907. }
 Surgeon, 1912. } C. C. CHOYCE, Esq., C.M.G., C.B.E., F.R.C.S.
 Consult. Surg., 1919. }
 Surgeon, 1902. } LAWRIE H. MCGAVIN, Esq., C.B.E., F.R.C.S.
 Consult. Surg., 1921. }

Consulting Ophthalmic Surgeon.

Surgeon, 1899. } L. VERNON CARGILL, Esq., F.R.C.S.
 Consult. Surg., 1919. }

Consulting Surgeon for Diseases of Throat, Nose and Ear.

Surgeon, 1909. } RICHARD LAKE, Esq., F.R.C.S.
 Consult. Surg., 1920. }

Physicians.

Asst. Phy., 1906. } SIR SYDNEY RUSSELL-WELLS, M.P., M.D., B.Sc.,
 Phy., 1908. } F.R.C.P.
 Asst. Phy., 1914. } C. E. SUNDELL, Esq., M.D., M.R.C.P.
 Phy., 1917. }
 Asst. Phy., 1914. } H. RIDLEY PRENTICE, Esq., M.B., M.R.C.P.
 Phy., 1920. }

Surgeons.

Assist. Surg., 1912.	}	P. P. COLE, Esq., F.R.C.S.
Surgeon, 1919.		
Assist. Surg., 1912.	}	CECIL ROWNTREE, Esq., F.R.C.S.
Surgeon, 1919.		
Assist. Surg., 1920.	}	E. T. C. MILLIGAN, Esq., O.B.E., F.R.C.S.
Surgeon, 1921.		

Ophthalmic Surgeon.

Assist. Oph. Surg., 1907.	}	R. E. BICKERTON, Esq., D.S.O., M.B., B.Ch.
Oph. Surg., 1919.		

Surgeon with Charge of Out-Patients.

1921. A. G. T. FISHER, Esq., M.C., F.R.C.S.

Neurologist.

Assist. Phy., 1910.	}	GORDON M. HOLMES, Esq., C.M.G., M.D., F.R.C.P.
Neurologist, 1914.		

Surgeon for Diseases of Throat, Nose and Ear.

1923. F. COURTENAY-MASON, Esq., M.S., F.R.C.S.

Physician-in-Charge of the Electrical Department.

MARTIN BERRY, Esq., M.D.

Dental Surgeon.

1913. J. BRAMLEY BALL, Esq., M.R.C.S., L.R.C.P., L.D.S.

Director of Pathology.

Physician, 1899.	}	Professor R. TANNER HEWLETT, M.D., F.R.C.P., D.P.H.
Director of Pathology, 1908.		

Assistant Director of Pathology.

Pathologist, 1910.	}	ARTHUR DAVIES, Esq., M.D., M.R.C.P.
Assist. Dir., 1920.		

Pathologist.

1920. FRANK STANDISH, Esq., M.B., B.S.

Anæsthetists.

1917.	R. DONNELLAN, Esq., L.R.C.P. & S.
1920.	E. S. ROWBOTHAM, Esq., M.R.C.S., L.R.C.P.
1921.	J. W. MAGILL, Esq., M.B., B.Ch.

Medical Superintendent and Registrar.

1919. H. RIDLEY PRENTICE, Esq., M.B., M.R.C.P.

Two House Physicians.**Two House Surgeons.****Matron.**

1894. MISS A. M. HALL, M.B.E.

Chaplain.

1913. Duties performed by the Chaplains of the Missions to Seamen.
Port of London.

Albert Dock Hospital.

Consulting Physician.

Assist. Phy.	1906.	}	C. W. DANIELS, Esq., M.B., F.R.C.P.
Physician	1912.		
Consult. Phy.	1920.		

Consulting Surgeons.

Surgeon	1899.	}	SIR JAMES CANTLIE, K.B.E., F.R.C.S.
Consult. Surg.	1921.		
Surgeon	1914.	}	COL. J. J. PRATT, I.M.S., F.R.C.S.
Consult. Surg.	1921.		

Physicians.

Assist. Phy.	1912.	}	G. C. LOW, Esq., M.D., M.R.C.P.
Physician	1918.		
Assist. Phy.	1918.	}	PHILIP MANSON-BAHR, Esq., D.S.O., M.D., F.R.C.P., D.T.M. & H.
Physician	1921.		

Surgeons.

1921.	H. ERNEST GRIFFITHS, Esq., M.S., F.R.C.S.
1921.	T. POMFRET KILNER, Esq., F.R.C.S.

Dental Surgeon.

1915.	T. H. VAUGHAN, Esq., L.D.S.
-------	-----------------------------

Pathologist.

H. M. HANSHELL, Esq., D.S.C., M.R.C.S., L.R.C.P., D.T.M. & H.

Anæsthetist.

1922.	C. LANGTON HEWER, Esq., M.B., B.S.
-------	------------------------------------

Two House Surgeons.

Matron.

1924.	Miss E. ALDERMAN.
-------	-------------------

Chaplain.

1917.	Duties performed by the Chaplains of the Missions to Seamen, Port of London.
-------	---

East and West India Docks Dispensary.

Medical Officer.

1900.	W. H. F. OXLEY, Esq., M.R.C.S., L.R.C.P.
-------	--

Hospital for Tropical Diseases, Endsleigh Gardens.

Consulting Physician.

1920. C. W. DANIELS, Esq., M.B., F.R.C.P.

Consulting Surgeon.

Surgeon 1919. }
Consult. Surg. 1921. } SIR JAMES CANTLIE, K.B.E., F.R.C.S.

Physicians.

1919. G. C. LOW, Esq., M.D., M.R.C.P.
Aest. Phy. 1919. }
Physician 1921. } PHILIP MANSON-BAHR, Esq., D.S.O., M.D.,
F.R.C.P., D.T.M. & H.

Extra Physician for Clinical Research.

1921. SIR LEONARD ROGERS, C.I.E., M.D., F.R.S.

Hon. Physician as representing the Colonial Office.

1921. SIR WILLIAM PROUT, C.M.G., O.B.E., M.B., C.M.

Physician in Charge of Electrical Department.

1920. MARTIN BERRY, Esq., M.D.

Surgeon.

1919. COL. J. J. PRATT, I.M.S., F.R.O.S.

Ophthalmic Surgeon.

1919. COL. R. H. ELLIOT, I.M.S., M.D., F.R.C.S.

Physician for Skin Diseases.

1919. J. M. H. MACLEOD, Esq., F.R.C.P.

Dental Surgeon.

1919. T. H. VAUGHAN, Esq., L.D.S.

Medical Superintendent.

1920. A. L. GREGG, Esq., M.D., B.Ch., D.T.M. & H.

One House Surgeon.

Hon. Chaplain.

1921. REV. E. L. METCALFE, M.A.

Matron.

Albert Dock, 1898. }
Endsleigh Gardens, 1919. } MISS C. GRAHAM KNIGHT, M.B.E.

Steward.

1923. W. D. BROCKMAN, Esq., M.A. (Cantab.), Barrister-at-Law.

Angas Convalescent Home, Cudham.

Medical Officer.

1918. H. H. DUMMERE, Esq., M.C., M.R.C.S., L.R.C.P.

Matron.

1918. Mrs. T. H. GILBERT.

King George's Sanatorium for Sailors, Bramshott,
Hampshire.

Physician.

1922. C. E. SUNDELL, Esq., M.D., M.R.C.P.

Surgeons.

1921. GILBERT SMITH, Esq., M.D., F.R.C.S.

1922. SIR HENRY GAUVAIN, M.D., M.C.

Dental Surgeon.

1921. H. W. TAYLOR, Esq., L.D.S.R.C.S.

Medical Superintendent.

1922. J. E. WOOD, Esq., M.R.C.S., L.R.C.P.

Chaplain.

1923. Rev. H. A. BOWLES, M.A.

Resident Secretary.

1922. Paymaster-Captain F. H. GERTY, C.M.G., R.N.

Matron.

1921. Miss J. WILLIAMS, R.R.C.

Tilbury Hospital.

Consulting Surgeons.

1896. T. OPENSHAW, Esq., C.M.G., M.S., F.R.C.S.

1921. ALFRED J. COUSENS, Esq., F.R.C.S.

Consulting Dental Surgeon.

1896. G. J. LUCAS, Esq., L.D.S., R.C.S.

Medical and Surgical Staff.

1902. A. F. BLAKE, Esq., M.R.C.S.

1904. S. FLOYD, Esq., M.D.

1920. L. G. JACOB, Esq., M.B., B.Ch.

1923. W. ALLINGHAM, Esq., M.D.

1923. A. W. FAULKNER, Esq., M.R.C.S., L.R.C.P.

1923. H. M. McCARTER, Esq., M.B., Ch.B.

Resident Medical Officer.

Dreadnought	1914	}	J. J. S. ROWE, Esq., L.M.S.S.A., D.T.M., B.Sc.
Tilbury	1924		

Matron.

1920. Miss A. M. FAIRBAIRN.

Seamen's Hospital Society.

ANNUAL REPORT FOR THE YEAR 1923.

THE Committee have much pleasure in laying before the Governors of the Corporation their Report for the past year.

The year 1923 will be notable because it records two advances in the progress of the Seamen's Hospital Society. Consequent upon the decision to remove the Royal Hospital School boys to new premises in Suffolk, the Admiralty have generously granted the Society a new and extended lease for 99 years, comprising the buildings and grounds of the Dreadnought Hospital, and, in addition, the Infirmary of the Royal Hospital School, Greenwich, and the grounds surrounding it, on the south side of the Romney Road.

This extension of site will provide facilities for the erection of a Nurses' Home and other departments, for which Lord Devonport raised a fund, and will afford opportunity for the extensive improvements in the old building which are urgently needed. Plans are now being prepared for the erection of the Nurses' Home and other improvements, and these will be carried out in the immediate future.

There has also been fulfilled a scheme which was first under consideration in the year 1888, that is, the establishment of a Branch of the Society in the Tilbury Docks. At that time the Committee did not feel justified in undertaking the care and responsibility of another establishment, and although the matter has been receiving attention on more than one occasion during the intervening years, it has not been

possible to bring it to fruition. In the year 1896 a small Hospital was established in the Tilbury Docks, with accommodation for 15 in-patients. This Institution, known as the "Passmore Edwards' District Cottage Hospital," has done excellent work; but, in view of the extension of the docks, the Committee of that Hospital felt that it was time the establishment was enlarged and brought up to date, to enable it to meet the increased demands which will be made upon it.



TILBURY HOSPITAL.

Accordingly the Seamen's Hospital Society was approached with the request that they should take over the management of the "Passmore Edwards' District Cottage Hospital." This additional responsibility the Committee has accepted, and the Hospital passed into their administration as from January 1st, 1924. In future, this Hospital will be known as the "Tilbury Hospital," the name "Passmore Edwards" being retained in connection with the present building, which will form one of the wings of the Hospital when enlarged. Dr. J. J. S. Rowe, an old official of the Society, who has served for some years at the Hospital at Greenwich, has been appointed Resident Medical Officer at Tilbury, and took up his duties on the 1st January, and the Committee have every

confidence in feeling that the traditions of the Dreadnought will be maintained in this new branch of their activities. It is hoped to extend the Hospital, so as to afford proper accommodation for the Out-Patient Department and to bring up to 30 the number of beds for in-patients.

Before handing over to the Seamen's Hospital Society the former Tilbury Hospital Committee had made arrangements for the provision and housing of an X-Ray installation of the latest pattern, and had also completely re-equipped the operating theatre.

An important feature of this Hospital is that, by the generosity of Mr. P. J. Singhanee, of Bombay, separate accommodation is provided for Indian patients. Mr. Singhanee presented a sum of One Lakh of Rupees (£6,732) for the construction and equipment of the ward and for its endowment. This ward is now in the course of erection.

The acquisition of the Tilbury Hospital rounds off the Society's work, making them responsible for sick and injured Seamen in the whole of the Port of London.

While the Society has been extending its activities in these new directions it is gratifying to report that the work in all its Institutions has been carried on with greater vigour, and in almost every instance the number of patients treated shows an increase. The figures for the year are as follows:—

	IN.	OUT.	TOTAL.
Dreadnought	2,514	8,320	10,834
Albert Dock Hospital ...	790	8,235	9,025
Hospital for Tropical Diseases	530	—	530
King George's Sanatorium	131	—	131
Angas Convalescent Home	400	—	400
East India Dock Dispensary	—	282	282
			<hr/> 21,202 <hr/>

The Committee record, with deep regret, the death in March last, of Captain H. B. Hooper, R.I.M., who was elected to the office of Deputy-Chairman just one year previously. He had served on the Committee since 1907. Captain Hooper was Vice-Chairman and Managing Director of the General Steam Navigation Company, a partner in Messrs. Gray, Dawes & Co., a Director of the Atlas Assurance Company, Chairman of Lloyd's Classification Committee, a member of the Board of Trade Committee of Shipping and Shipbuilding, and of the Committee of the Chamber of Shipping of the United Kingdom. Busy man though he was, yet he rarely missed paying a weekly visit to the Dreadnought Hospital. He is greatly missed by those who had the privilege of being associated with him in the work of the Seamen's Hospital Society.

Captain Sir Ion Hamilton Benn, Bt., C.B., D.S.O., R.N.V.R., who has been a member of the Committee for 17 years, has been elected to fill the office of Deputy-Chairman.

Sir George Dashwood, Bt., who has been a regular attendant at the Meetings of the Committee since the year 1914, has felt compelled to resign, as he has now left London. The Committee much regret that they will no longer have the advantage of his counsel and assistance at their Meetings.

The Committee also deeply regret to report the death of Mr. Edward Worthington, who, for the past 48 years, held the appointment of Shipping Secretary. He gave most devoted service to the Society and his indefatigable energy did much to bring about the present financial stability of the Corporation. His duties brought him in close contact with Captains and other officers of the Mercantile Marine, amongst whom he was very popular.

Mr. A. A. Payne, who has served as Accountant for 12 years, has been appointed Shipping Secretary, in the place of Mr. Worthington, and Mr. L. F. Land has been chosen to fill the office of Accountant.

LEGACIES.

THE Committee observe with much regret that among the many large Bequests to Charities the Dreadnought and Sick Seamen seem often to be forgotten.

England's prosperity and greatness from all time comes through the sea, and the supporters of the Charity are earnestly asked to remember the Sailor.

Forms of Devise and Bequest.



The Society being dependent on Voluntary Support, persons desirous of making BEQUESTS are recommended to observe the following as legal forms:—

A.

FORM OF GIFT BY WILL OF LANDS, &c.

I give and devise to the SEAMEN'S HOSPITAL SOCIETY all that, &c. [describing the lands, houses, rents, or other property], for the use of the said Society.

B.

FORM OF BEQUEST OF MONEY, &c.

I bequeath to the SEAMEN'S HOSPITAL SOCIETY the sum of £ for the use of the said Society, to be paid free from Legacy Duty; and I declare that the receipt of the Treasurer for the time being of the said Society shall be a sufficient discharge for the same.

N.B.— By a clause in its Act of Parliament (3^d Gul. IV., cap. IX.) the Society is empowered to receive any Moneys, Messuages, Lands, Tenements, Rents, Annuities, &c., whatsoever, not exceeding the value of £12,000 per Annum, in addition to any sums of Money to any amount, and any Goods, Ships, &c., of whatever value, which may be given or bequeathed to it from time to time.

If a Will has been already made, and it is afterwards desired to benefit the Hospital, it will be sufficient if the following form is filled up, detached, duly signed, and witnessed in like manner as the Will itself, and carefully attached to the existing Will.

THIS IS A CODICIL to the last Will and Testament
of me.....

dated.....

I bequeath to the Seamen's Hospital Society the sum of

£ ; ; for the use
of the said Society, to be paid free of Legacy Duty,
and I declare that the receipt of the Treasurer for
the time being of the said Society shall be a sufficient
discharge for the same.

IN WITNESS whereof I have hereunto set my hand
this.....day of.....19.....

Signed by the Testator.....
as and for a Codicil to
his last Will and Testa-
ment dated.....
in the presence of us both
being present at the same
time, who at his request
and in his presence and
in the presence of each
other have hereunto set
our names as witnesses.

Signature of Testator or Testatrix.

(1).....of.....

.....(Profession).....

(2).....of.....

.....(Profession).....

Legacies.

DO NOT FORGET THE SAILOR.

Legacies and Donations to Endowment are the best form of benefaction, because their value endures in perpetuity.

The Seamen's Hospital Society is empowered by its Act of Parliament to take and to hold Real Estate.

Form of Bequest, *vide* page 16b.

List of Legacies received since the year 1821, *vide* page 42.

Endowed Beds.

A sum of £1,000 is sufficient to Name and Endow a Bed in perpetuity.

A list of such Beds will be found on page 38, and the Committee desire to bring to the notice of all those who care for the Sailor this opportunity of coming to his aid in the hour of illness and pain, while perpetuating for all time the names of those who may be dear to the benefactor.

Qualification for a Governor—One Guinea Annually.
Life Governor—Ten Guineas (Donation).

The list of Vice-Presidents of the Corporation has been augmented by the addition of Sir Norman Hill, Bt., and the Rt. Hon. Lord Southborough, G.C.B., G.C.M.G., G.C.V.O., K.C.S.I., whilst Vice-Admiral Sir George P. W. Hope, K.C.M.G., C.B. (President of the Royal Naval College), Rear-Admiral George R. Mansell, C.B.E., M.V.O. (an Elder Brother of the Trinity House), Captain A. M. Hughes, and Col. F. H. D. C. Whitmore, C.M.G., D.S.O., have joined the Committee of Management.

The vacancy on the Honorary Medical Staff of the Dreadnought Hospital, consequent on the death of Mr. G. Nixon-Biggs, the Surgeon for Diseases of Throat, Nose and Ear, has been filled by the appointment of Mr. F. Courtenay-Mason, M.B., M.S., F.R.C.S.

Since the last Report was issued the Rev. W. W. Warren, appointed, in 1918, by the Missions to Seamen, to serve at Greenwich, and who has done excellent work there as Chaplain to the Dreadnought, has been appointed to the living of Tarsset, in Northumberland, and the Rev. J. J. Bilby has taken up his work at the Hospital.

The Rev. E. H. Polehampton, Rector of Bramshott, who has acted as Chaplain at King George's Sanatorium at Bramshott since its opening in 1921, has found it impossible to continue to perform the duties. Your Committee have now appointed the Rev. H. A. Bowles, who has been associated with the Sanatorium for some time, to the vacant office.

Mr. J. C. Gilbert, who has served the Society for ten years, in the first instance in the Steward's Department at Greenwich, and subsequently as Steward at the Hospital for Tropical Diseases, Endsleigh Gardens, has resigned his post there as he is taking up residence in Australia. Mr. W. D. Brockman, M.A., Steward at the Dreadnought, has been promoted to the Hospital at Endsleigh Gardens, and the vacancy thus created at the Dreadnought Hospital has been filled by the appointment of Mr. F. A. Lyon, B.A.

The Albert Dock Hospital has suffered a severe loss in the resignation of Miss N. Price, whose period of office as Matron has been marked by such conspicuous success. Miss Edith Alderman, who was trained at the Dreadnought, has been appointed Matron of this Branch, and the Committee feel confident that she will carry on the good work of Miss Price and maintain the usefulness of the Institution in the Dock District.

The Committee desire to express their warm thanks, not only to those who have aided by monetary assistance, but also to those who have shown their sympathy with the Sailor by sending gifts in kind and by organising entertainments for the patients. They also wish to record their appreciation of the services rendered by the members of the Honorary Medical Staff, and the Nursing Staff, in the various establishments of the Charity.

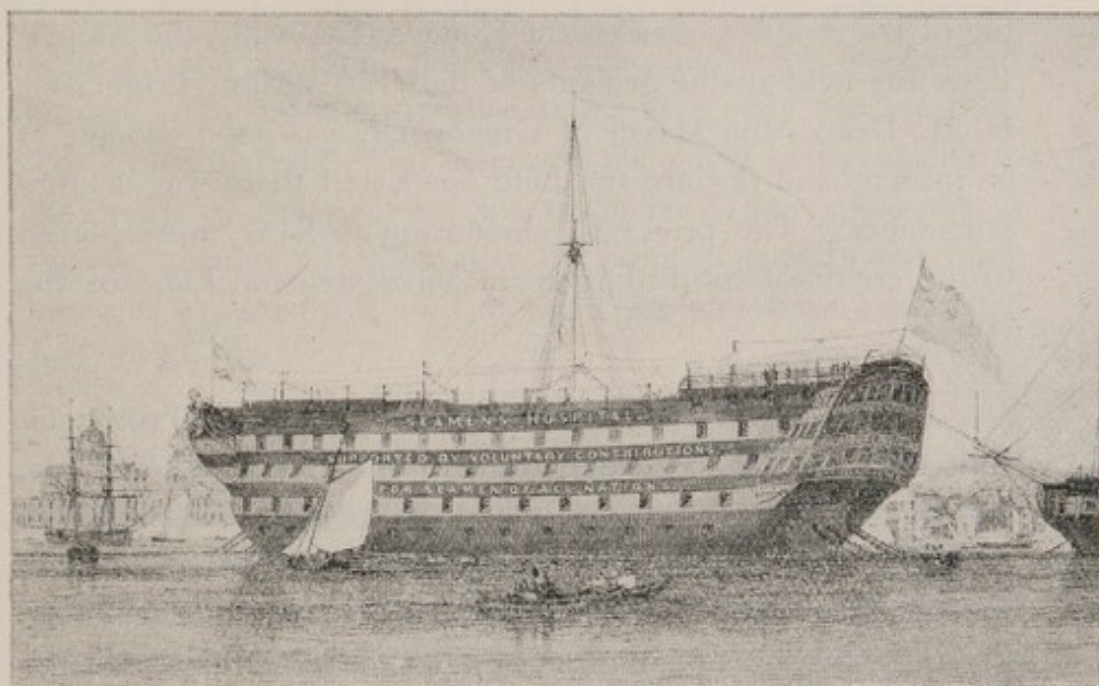
King Edward's Hospital Fund, King George's Fund for Sailors, the Alexandra Day Committee, the Metropolitan Hospital Sunday Fund, and Hospital Saturday Fund, have again afforded most liberal support, thus showing their confidence in the way in which the work of the Corporation is carried on. The Committee take this opportunity of expressing their sincere thanks to these organisations.

The year 1923 has closed free of debt, but the year 1924 opens with greater responsibilities. The Committee, in conclusion, feel that those who have so nobly aided them in building up the Corporation to its present state of efficiency and usefulness, will equally assist them adequately to maintain its various Institutions for the care and succour of sick and suffering Seamen.

ARTHUR W. CLARKE,

Chairman.

February, 1924.



THE OLD DREADNOUGHT AS SHE LAY IN THE RIVER OFF GREENWICH UNTIL
THE HOSPITAL WAS MOVED ASHORE IN 1870.

EVENTS OF THE YEAR 1923.

The Annual Meeting which took place at the Hotel Cecil, on Tuesday, March the 13th, was probably one of the most successful that has ever been held. H.R.H. The Duke of York (the President of the Corporation), was graciously pleased to occupy the Chair, and about 1,000 Governors of the Society and other friends interested in the Sailor were present. Congratulations were offered to His Royal Highness on his approaching marriage, and speeches were made by the Chairman, Captain Sir Arthur Clarke, K.B.E., the Rt. Hon. Sir Philip Lloyd-Greame, K.B.E., M.C., M.P. (President of the Board of Trade), the Rt. Hon. L. S. Amery, M.P. (First Lord of the Admiralty), Sir Frederick Lewis, Bt., and Sir Sydney Russell-Wells, M.P. Tea was served to the guests in the Victoria Hall at the conclusion of the Meeting.

Several interesting functions have taken place during the year:—

On Saturday, the 7th July (the anniversary of the open-

ing of the (Angas Convalescent Home at Cudham), the Annual Fête was held in the grounds of that Institution. Councillor E. M. Dence, the Mayor of Greenwich, was good enough to be present and declare the Fête open, and there was a large attendance. The proceeds, amounting to £117, were placed to the credit of the Enlargement and Extension Fund of the Home.

Rear-Admiral Sir Edward Inglefield, K.B.E. (Provincial Grand Master for Buckinghamshire) unveiled a tablet in the Northumberland Ward of the Dreadnought Hospital, on Saturday, the 14th July. This tablet has been erected to commemorate the endowment of a bed by contributions from Freemasons, the money for which had been raised by the efforts of the Seamen's Hospital Aid Committee. The following Lodges were represented at the ceremony:—The Dreadnought Lodge, Lewisham Lodge, Wellington Lodge, Lodge of Justice, Borough of Greenwich Lodge, Royal Oak Lodge, Lee Lodge, Brixton Lodge, Winton Lodge, Earl of Lathom Lodge, Forest Hill Lodge, Woolwich Polytechnic Lodge, and Hatfield Lodge.

Captain E. Wildy, O.B.E., V.D. (Deputy Grand Sword-Bearer, Grand Lodge), represented the Board of Management of the Seamen's Hospital Society.

The Bed is named—"The Seamen's Hospital Aid Committee No. 2 Bed (Masonic)."

By kind permission of Sir Frank Dyson, the Astronomer Royal, the Annual Garden Party arranged by the Seamen's Hospital Aid Committee, usually held in the grounds of the Dreadnought Hospital, took place in the grounds of the Royal Observatory, on Thursday, the 19th July. The Observatory was thrown open to inspection, and though the weather was not kind, a very large number of visitors attended.

A Fête was held at King George's Sanatorium, on

Wednesday, the 29th August. Lord Selborne very kindly attended and declared the Fête open, and large numbers of persons were present, in spite of the extremely wet weather. The function resulted in a sum of £305 18s. being placed to the credit of the fund for installing an X-Ray apparatus at the Sanatorium. His Majesty the King graciously sent three brace of grouse to be sold at the Fête, and these realised a sum of £6 10s.

The Angas Convalescent Home at Cudham has done splendid work throughout the year, a daily average of over 23 having been maintained throughout 1923. It is felt that there is a great need for a Recreation Room, for accommodation for officer patients, and also for Nurses, who may be sent to the Home to convalesce. Plans are being prepared for this extension, and it is hoped that before long the additional facilities may be afforded.

Admiral of the Fleet Sir Henry Jackson has rendered great assistance in connection with the installation of a wireless apparatus at the Home. This is greatly appreciated by the men and the staff, as the Home is very isolated, and far from any place of amusement.

The Hospitals' Welfare Society have once more come to the aid of the Seamen's Hospital Society, and during the year 1923, the generous sum of £750 has been received from this organisation—£225 more than last year.

The Mayor of Greenwich, Mr. Councillor E. M. Dence, has very generously supported the Hospital during his year of office. The successful Concert organised by him at the Blackheath Concert Hall, on the 8th November, on the eve of the end of his year of office, in aid of the local hospitals, resulted in a sum of £70 being allocated to the Dreadnought Hospital.

The Albert Dock Hospital is much indebted to Mr. J. A. Leary, an old friend of the Society, who, with others, has presented a wireless installation to that Branch of the Society's work.

Mr. Woolterton has most generously given a beautiful cabinet gramophone to the nursing staff of the Hospital. This is a very welcome gift indeed, and a great joy to the sisters and nurses.

King George's Sanatorium has had a busy and successful year.

Owing to the kind assistance of the many friends of the Sanatorium, an X-Ray Apparatus has been installed—this will be of inestimable assistance in the treatment of the patients.

Many valuable gifts have been presented to the Sanatorium during the year, including an oil painting, which Admiral Jervoise has been good enough to give for the chapel, and a billiard table from Lady Bourdillon.

A stained glass window has been placed in the chapel of the Sanatorium to the memory of the late Mr. Cecil B. Miller, a patient in the Sanatorium for 18 months. The window was dedicated by Bishop Crossley on the 7th December.

The Annual Entertainments at the "East Ham Palace," took place on the 15th and 16th November. The Society is much indebted to Mr. R. W. Vagnolini and the Entertainment Committee for the consistent and untiring labours exerted on behalf of the Albert Dock Hospital.

The Dreadnought Hospital is again greatly indebted to the Seamen's Hospital Aid Committee, who are not only endowing a third bed in the Hospital, but who have rendered great assistance by organising dances, whist drives, concerts on Greenwich Pier, and in many other ways have augmented the funds of the Institution. Mr. Harold Davis and Mrs. Harrison, formerly Chairman and Vice-Chairman of the Entertainment Committee, have felt unable to continue office, but Mr. H. Baron, J.P., and Councillor H. C. Gallehawk have kindly consented to act as Chairman and Deputy Chairman, and are carrying on the good work of their predecessors.

During the year the following beds have been endowed:—

Douglas Cow Bed.

Seamen's Hospital Aid Committee No. 2 Bed
(Masonic).

Moorsom Trust Beds (2).

The following legacies have been received:—

	£	s.	d.
Mr. Cecil B. Miller	125	0	0
Mr. George Burdick	100	0	0
Mr. Alfred John Hirsch	1,000	0	0
Mrs. Lupton	1,000	0	0
Mr. Wm. F. Goodliffe	450	0	0
Major Thomas Bott	200	0	0
Sir Frederick Cleeve, K.C.B. (formerly Chairman of S.H.S.) ...	200	5	0
Mr. A. Harris Wickenden ...	7,000	0	0
Mr. David John Hewett... ..	100	0	0
Mrs. Atkinson	50	0	0
Mr. T. R. Browne	52	4	9
Mr. J. M. Skudder	417	5	8

Trust Funds of the Seamen's Hospital Society.

THE WILLIAM HOLLINS FUND. 1865.

Mr. WILLIAM HOLLINS, of Over Wallop, Southampton, left £500 3 per cent. Reduced Bank Annuities (now $2\frac{1}{2}$ per cent. Consols), under the following proviso:—"That the sum should be invested in the Public Stocks or Funds of Great Britain, and *'kept apart'* as a fund to be called *William Hollins Fund*," the dividends to be applied in carrying on and supporting the charitable designs of the Society." Trustees, "The Official Trustees of Charitable Funds." Income, £12 10s.

THE GEORGE STURGE FUND. 1884.

Mr. GEORGE STURGE, of Woodthorpe, Sydenham Hill Road, Kent, executed a Deed of Trust providing for the payment to the Seamen's Hospital Society of £653 Railway Stock, representing £750, under the following conditions, viz.:

"In giving the sum of £750 for a Samaritan Fund for the above Hospital, Mr. STURGE gives it on the conditions that this Fund shall be *kept entirely separate* from the general funds of the Hospital, and that the income shall be paid to or applied for such In-patients as may be necessitous, and within three months from their discharge from the Hospital, and for the purpose of their having necessary nourishment or change of air.

"Mr. STURGE hopes that this Fund may be made known, and that others may be induced to subscribe to it." Trustees, "The Official Trustees of Charitable Funds." Income, £27 15s.

THE JAMES DAVID DINSDALE FUND. 1891.

Mr. DINSDALE, of Whitby, York, bequeathed £100 to the Seamen's Hospital Society, with the following conditions:—"Upon trust to invest the same in any of the Public Stocks or Funds of Great Britain, or upon Government or Real Securities in England or Wales and that the annual income of the last-mentioned sum of one hundred pounds shall for ever hereafter be applied towards the general purposes of the above Society." Trustees, "The Official Trustees of Charitable Funds." Income, £2 10s.

THE JOHN H. LUSCOMBE MEMORIAL FUND. 1897.

This Fund of £100 was established in the year 1897, to benefit sick Seamen on leaving the Hospitals of the Seamen's Hospital Society, and to keep in remembrance the name of the late John H. Luscombe, Esq., the interest whereof to be for ever applied in the above-mentioned manner by the Committee of the Seamen's Hospital Society. Invested in the purchase of £89 1s. 8d. £2 15s. per cent. (now $2\frac{1}{2}$ per cent.) Consolidated Stock. Trustees, "The Official Trustees of Charitable Funds." Income, £2 4s. 4d.

THE AMERICAN VICTORIA JUBILEE FUND. 1897.

To commemorate the Diamond Jubilee of Her Majesty Queen Victoria the American citizens in London contributed by means of the American Victoria Jubilee Fund, a sum of £1,000 for the endowment of a bed, to be named the "Queen Victoria Bed," in the Society's Branch Hospital in the Royal Victoria and Albert Docks. Invested in the purchase of £894 17s., £2 15s. per cent. (now $2\frac{1}{2}$ per cent.) Consolidated Stock. Trustees, "The Official Trustees of Charitable Funds." Income, £22 7s. 4d.

THE ANNE DU BOIS MEMORIAL FUND. 1902.

This Fund of £45 was established in the year 1902 by Miss Esther Du Bois, deceased, in "Fond Memory of Anne Du Bois." Invested in the purchase of £48 7s. 5d. £2 15s. per cent. (now $2\frac{1}{2}$ per cent.) Consolidated Stock. A further sum of £40 invested in purchase of £49 16s. 6d. Consolidated Stock was received in 1910. Trustees, "The Official Trustees of Charitable Funds." Income. £2 9s.

THE "ARGONAUT" BED. 1906.

This Fund of £1,000 was established by the Owners, Passengers and Officers of the Steam Yacht "Argonaut," 1902-1906, to endow in perpetuity a bed in the Branch Hospital of the Seamen's Hospital Society. Invested in the purchase of £1,152 14s. 9d. £2 10s. per cent. Consolidated Stock. Trustees, "The Official Trustees of Charitable Funds." Income. £28 16s. 4d.

THE "BERTHA" FUND. 1907.

This Fund has been established by an anonymous donor towards the endowment of a cot in the Children's Ward of the Dreadnought Hospital, to be called "The Bertha Cot." £216 16s. Metropolitan Water Board 3 per cent. Stock. Trustees, "The Official Trustees of Charitable Funds." Income, £6 10s 2d.

THE WALTER ADAMS MEMORIAL. 1907.

"To commemorate his service of 35 years in the Seamen's Hospital, his fellow-workers have raised a fund to bear his name and to augment the benefits of the Samaritan Fund, which he managed with so deep and thoughtful an interest in the cause of sick and needy seamen." Invested in the purchase of £77 3s. 4d. $2\frac{1}{2}$ per cent. Consolidated Stock. Trustees, "The Official Trustees of Charitable Funds." Income, £1 18s. 4d. A Memorial is also erected in the Dreadnought Hospital Chapel. He died on duty 6th of March, 1906.

THE LADY HARRIETTE ANN McILWRAITH FUND. 1909.

This Fund was created by a gift of One Thousand Pounds from Lady McILWRAITH, of Weldoes, Harrow Weald, Middlesex, to endow in perpetuity a Medical Bed in the Dreadnought Hospital of the Seamen's Hospital Society, in memory of her husband, the Honourable Sir THOMAS McILWRAITH, K.C.M.G., LL.D., who was three times Premier of Queensland, and who died in 1900. £1,134 15s. New South Wales 3 per cent.

It is a condition of the Trust that a Scotchman shall always have priority of right to this bed.

Invested in the purchase of 3 per cent. New South Wales Stock. Trustees, "The Official Trustees of Charitable Funds." Income, £34 0s. 10d.

(See also "Harriette Ann McIlwraith" Bed, 1918.)

THE "ANNIE ZUNZ" FUND. 1910.

This Fund was created by a gift of £3,000 from the Trustees of the "Zunz Bequest" for the endowment in perpetuity of a Ward on the Somerset Floor of the "Dreadnought" Hospital, in memory of Annie Zunz. Invested in the purchase of £3,625 7s. 7d. India Three per cent. Stock.

Trustees, "The Official Trustees of Charitable Funds." Income, £108 15s.

THE "GEORGE BUSK" MEMORIAL FUND. 1911.

The Misses ELEANOR and FRANCES BUSK have created this Fund by a gift of One Thousand Pounds to perpetuate the memory of GEORGE BUSK, F.R.S., President of the Royal College of Surgeons in 1871, whose skill and unwearying devotion were ever at the service of the Seamen's Hospital Society from the year 1830 to 1886.

This Fund is created by his daughters for the endowment of a Bed on the Somerset Floor of the Dreadnought Hospital in fulfilment of a wish of their mother—ELLEN BUSK.

Invested in the purchase of £1,048 9s. 10d. 3½ per cent. India Stock. Trustees, "The Official Trustees of Charitable Funds." Income, £36 14s.

THE "LAW" MEMORIAL FUND. 1911.

Dr. JOHN LAW, late Brigade Surgeon in the Indian Medical Service, has created this Fund by a gift of £1,000, to name and endow a bed in perpetuity in the Dreadnought Hospital of the Seamen's Hospital Society. The Bed will be known as the "John Law" Bed, and is primarily intended for the use of natives of India. Invested in the purchase of £1,041 13s. 4d. India 3½ per cent. Stock. Trustees, "The Official Trustees of Charitable Funds." Income, £36 9s.

THE "FRASER" FUND. 1911.

Mrs. FRASER, widow of the late T. H. FRASER, R.N., bequeathed £5,000 to the Society, and her Executors expressed a wish that the name of Fraser should be connected in perpetuity with the work of the Society. In accordance with their wishes, a Ward of four beds has been named the "Fraser" Ward. It was resolved to invest the Bequest as a separate Trust Fund, while as regards the use of the capital the power to approve or veto shall lie with the Deputy Master of Trinity House, the Chairman of the Committee of Lloyd's, and the Chairman of the Committee of Lloyd's Register. Invested in the purchase of £1,715 S.E. Railway 5 per cent. Debenture Stock and £2,130 Great Eastern Railway 4 per cent. Guarantee Stock. Trustees, "The Trustees of the Seamen's Hospital Society." Income, £170 19s.

THE "WANDSWORTH" FUND. 1912.

This Fund was created under the Will of the late Lord Wandsworth to be devoted at the discretion of Sir William Bennett, K.C.V.O., to purposes of Medical Research. Sir William Bennett decided to give this sum to the London School of Tropical Medicine, and the income of the Fund is being given to a travelling Scholarship tenable for three years. This Fund is held under the corporate Seal of the Seamen's Hospital Society. Income, £370.

THE DUNCAN MEDALS. 1912.

Dr. ANDREW DUNCAN (Colonel, I.M.S.), a member of the Honorary Medical Staff of the Albert Dock Hospital, by his Will, dated the 23rd March, 1912, bequeathed two Legacies to the Society:—

£150 to provide a Medal to be competed for annually in the London School of Tropical Medicine.

£100 to provide a Medal to be awarded to the Nurse at the Albert Dock Hospital who comes out first in the annual examination in Tropical Medical Nursing.

£153 19s. 6d. invested in New Zealand 4 per cent. Stock, 1943-63. Income, £6 3s. 2d. Trustees, "The Trustees of the London School of Tropical Medicine."

£102 13s. invested in New Zealand 4 per cent. Stock, 1943-63. Income, £4 2s. 1d. Trustees, "The Trustees of the Seamen's Hospital Society."

THE "STIDOLPH" TRUST. 1913.

This Trust was created by a gift of £1,000 from Mrs. STIDOLPH to endow in perpetuity a bed in the Dreadnought Hospital, Greenwich, in memory of her husband, the late EDWARD SPENCER STIDOLPH, a generous supporter of the Hospital, and a benefactor of all good works in Greenwich. Trustees, "The Official Trustees of Charitable Funds." Invested in £1,045 L.N.E. Rly. 4 per cent. 2nd Guaranteed Stock. Income, £41 16s.

THE "CHAMBERLAIN" FUND. 1913.

+ This Fund was founded by the Rt. Hon. AUSTEN CHAMBERLAIN, M.P., who set apart from the monies received by him for the advancement of Tropical Medicine, a sum of £6,000 for the maintenance of beds in the Albert Dock Hospital for the treatment of Patients suffering from Tropical Disease. Trustees, "The Official Trustees of Charitable Funds." Invested in £2,099 South Australian 4 per cent. Stock, 1940-60. £2,000 East Surrey Water Co. 4 per cent. Consolidated Debenture Stock. £2,000 Madras and Southern Mahratta Railway 4 per cent Debenture Stock. Income, £243 19s. 2d.

THE "WILLIAM BEVAN" BED. 1915.

Named in the Dreadnought Hospital, Greenwich, in memory of the late William Bevan, Esq., who, subject to some life interests, bequeathed all his London County Council Stock in trust for the Seamen's Hospital, Greenwich.

THE "S. A. OXTOBY" BED. 1915.

The late Miss S. A. OXTOBY left a considerable sum at the discretion of her Executors for distribution to Charitable Institutions. The surviving Trustee, Mr. H. J. Jeffery, decided to devote £1,000 to the endowment of a bed in the Dreadnought Hospital, to be known in perpetuity as the S. A. OXTOBY Bed. This fund was created, and the gift has been invested in £999 9s. Victoria 4½ per cent. Stock. Income, £45.

THE "GERALD LEATHER" TRUST. 1915.

This Fund was created by his Mother, in memory of Lieut. GERALD LEATHER, R.N., who lost his life when H.M.S. "Pathfinder" was torpedoed. Her gift of £400 has been invested in 4½ per cent. War Stock, 1925-1945. Income, £18.

THE "C. W. SIMSON" TRUST, 1916.

£100 Exchequer Bonds (1920), for the Hospitals of the Seamen's Society.
£100 Exchequer Bonds (1920), for the London School of Tropical Medicine.
These Bonds are lodged with the Charity Commissioners for the purposes named. Income, £12.

THE "MAURICE FREDERICK ARNOLD" MEMORIAL FUND. 1917.

This Fund was created by his Father, in memory of the late MAURICE FREDERICK ARNOLD, who died at sea in May, 1916. A sum of £100 Consols has been lodged with the Charity Commissioners. Income, £2 10s.

THE "HONG-KONG" FUND. 1917.

The Hong-Kong War Charities Committee created this Fund by a contribution of £2,000, as a tribute to the courage and disregard of danger shown by the sailor.

The above amount has been invested in 5 per cent. War Stock. Trustees, The Official Trustees of Charitable Funds. Income, £100.

THE "SILVERTOWN" BED. 1917.

By a gift of £500 the Manufacturers in Silvertown named this bed, in recognition of the services rendered at the Albert Dock Hospital on the occasion of the Explosion on 19th January, 1917.

Invested in 5 per cent. War Stock. Trustees, The Official Trustees of Charitable Funds. Income, £25.

THE "CALLENDER VOLUNTEER SQUAD" FUND. 1917.

Created by a gift of £50. Invested in 5 per cent. War Stock.

Trustees, The Trustees of the Seamen's Hospital Society. Income, £2 7s. 6d.

THE "BURMA" FUND. 1917.

The Secretary of State for India set aside from the Burma Fund the sum of £1,000 to endow a Bed in the Hospital for Tropical Diseases.

Invested in 5 per cent. War Stock.

Trustees, The Official Trustees of Charitable Funds. Income, £50.

THE "JACOBS" FUND. 1917.

This Fund is created by the Associated Oil Carriers, Ltd., as a tribute to the memory of their Chairman, the late Mr. JOHN J. JACOBS. The gift of £1,000 has been invested in 5 per cent. War Stock, and a Bed endowed in the Dreadnought Hospital.

Trustees, The Official Trustees of Charitable Funds. Income, £50.

THE "BURY" FUND. 1918.

£518 0s. 5d. 5 per cent. War Stock, 1929/47. Given by Mrs. BURY, of St. Leonard's House, Nazeing, Essex, for the Julian Henry Bed at the Albert Dock Hospital. Trustees, "The Official Trustees of Charitable Funds."

THE "GORDON" BED. 1918.

Given by Mrs. LANGFORD for the Angas Home, in memory of her father, ROBERT GORDON. £1,064 8s. 6d. War Stock, 1929/47. Trustees, "The Official Trustees of Charitable Funds."

THE "HARRIETTE ANN McILWRAITH" BED. 1918.

Given by LADY HARRIETTE ANN McILWRAITH for the Angas Home. £1,056 15s. 2d. 5 per cent. War Stock, 1929/47. Trustees, "The Official Trustees of Charitable Funds."

(See also "Lady Harriette Ann McIlwraith" Fund, 1909.)

THE "CHERRY BLOSSOM" BED. 1918.

At the Dreadnought Hospital. A gift of the Japanese Merchants in London. £1,056 15s. 2d. 5 per cent. War Stock, 1929/47. Trustees, "The Official Trustees of Charitable Funds."

THE "NAVY LEAGUE OVERSEAS RELIEF FUND" BED. 1918.

At the Angas Home. £1,055 11s. 5 per cent. War Stock, 1929/47. Trustees, "The Official Trustees of Charitable Funds."

THE "ELIZABETH TUPPER" TRUST. 1918.

This Trust was created by a bequest of £1,800 by the late Mrs. ELIZABETH TUPPER "as a remembrance of her late dear son, Lieutenant CHARLES GEORGE DE BEAUVOIR TUPPER, R.N. The above amount has been invested in 5 per cent. War Stock. Trustees, "The Official Trustees of Charitable Funds."

THE "OLDHAM LEES" TRUST. 1918.

For the Angas Home. £105 13s. 6d. 5 per cent. War Stock, 1929/47. Trustees, "The Official Trustees of Charitable Funds."

THE "BECKER" BED. 1918.

For the Angas Home. Endowment created by SIR WALTER BECKER, of Turin. £1,056 14s. 11d. 5 per cent. War Stock. Trustees, "The Official Trustees of Charitable Funds."

THE "KING GEORGE'S FUND FOR SAILORS" BED. 1918.

For the Angas Home. £1,583 19s. 11d. 5 per cent. War Stock. Trustees, "The Official Trustees of Charitable Funds."

BRITISH RED CROSS AND ORDER OF ST. JOHN OF JERUSALEM FUND. 1919.

By a gift of £100,000 the British Red-Cross Society and the Order of St. John of Jerusalem enabled the Society to purchase the Endsleigh Palace Hotel for the purpose of a Hospital for Tropical Diseases, and of this sum £45,000 was set apart as an endowment thereof. £19,632 1s. 5d. 5 per cent. War Stock, 1929-47. £20,000 4 per cent. L.M. & S. Rly. Debenture Stock, £13,988 4s. 3½ per cent. Conversion Stock, 1961. Trustees, The Official Trustees of Charitable Funds.

THE "STANLEY MAUDE" WARD. 1919.

Endowed at the Hospital for Tropical Diseases, Endsleigh Gardens, N.W., by the Mesopotamia Comforts Fund, in memory of the late **LIEUTENANT-GENERAL SIR FREDERICK STANLEY MAUDE, K.C.B., C.M.G., D.S.O.** £12,745 13s. 3d. 4 per cent. Funding Loan, 1960-90. Trustees, The Official Trustees of Charitable Funds.

THE "SILVER THIMBLE" WARD. 1919.

Endowed at the Dreadnought Hospital, Greenwich, by the Silver Thimble Fund. £10,623 12s. 2d. 5 per cent. War Stock, 1929-47. Trustees, The Official Trustees of Charitable Funds.

THE "ANGAS" BED. 1919.

At the Angas Convalescent Home, Cudham. Endowed by **Mrs. ANGAS**, founder of the Home. £1,049 15s. 8d. 5 per cent. War Stock, 1929-47. Trustees, The Official Trustees of Charitable Funds.

THE "BALTIC AND LLOYD'S AMBULANCE UNIT" COT. 1919.

Endowed in the Angas Home, by the Committee of the Baltic and Lloyd's Ambulance Unit. £1,095 16s. 4d. 5 per cent. War Stock, 1929-47. Trustees, Official Trustees of Charitable Funds.

THE "BRITISH AMERICAN WAR RELIEF FUND OF PHILADELPHIA" BED. 1919.

Endowed at the Dreadnought Hospital, by the Committee of the above-mentioned Fund. £1,136 13s. 4d. 5 per cent. War Stock, 1929-47. Trustees, Official Trustees of Charitable Funds.

THE "GULLIVER" BED. 1919.

Endowed in the Dreadnought Hospital, by proceeds of Matinee at the Palladium, arranged by COL. CHARLES GULLIVER. £1,097 7s. 1d. 5 per cent. War Stock, 1929-47, £135 5 per cent. National War Bonds, 1928 (National Sunday League Gift). Trustees, Official Trustees of Charitable Funds.

THE "HAMILTON CANADA" BED. 1919.

Endowed in the Dreadnought Hospital, by the Hamilton Branch of the Navy League. £1,061 13s. 5 per cent. War Stock, 1929-47. Trustees, Official Trustees of Charitable Funds.

THE "LADIES' EMERGENCY COMMITTEE OF THE NAVY LEAGUE" BEDS. 1919.

Two Beds have been endowed by the Ladies' Emergency Committee of the Navy League, one at the Dreadnought Hospital, and one at the Angas Convalescent Home. £2,113 10s. 4d. 5 per cent. War Stock, 1929-47. Trustees, Official Trustees of Charitable Funds.

THE "NORMAN AUSTIN TAYLOR" BED. 1919.

Endowed in the Angas Home, by Mr. AUSTIN TAYLOR, in memory of his son, NORMAN AUSTIN TAYLOR, who fell in the war. £1,250 4 per cent. Funding Loan, 1960-90. Trustees, Official Trustees of Charitable Funds.

THE "PERTHSHIRE" BED. 1919.

Endowed in the Dreadnought Hospital, by the Canteen Committee, Fleet Coal Office, Scapa Flow. £1,051 1s. 11d. 5 per cent. War Stock, 1929-47. Trustees, Official Trustees of Charitable Funds.

THE "GUTHRIE RANKIN" FUND. 1919.

A sum of £1,000 was bequeathed by the late Dr. GUTHRIE RANKIN, Consulting Physician of the Dreadnought Hospital, to augment the benefits of the Samaritan Fund. Invested in the purchase of £1,084 13s. 11d. 5 per cent. War Stock, 1929-47. Trustees, Official Trustees of Charitable Funds.

THE "SEVENOAKS" BED. 1919.

Endowed in the Angas Convalescent Home, Cudham, by residents in Sevenoaks and the district. £1,095 16s. 4d. 5 per cent. War Stock, 1929-47. Trustees, Official Trustees of Charitable Funds.

THE "T. W. SMYTH" BED. 1919.

Endowed in the Dreadnought Hospital, by Mr. and Mrs. T. W. SMYTH, in memory of their son, BASIL W. SMYTH, who fell in the war. £1,084 13s. 11d. 5 per cent. War Stock, 1929-47. Trustees, Official Trustees of Charitable Funds.

THE "MINESWEEPERS'" BED. 1920.

Endowed in the Dreadnought Hospital, by a gift of £1,000. Invested in 5 per cent National War Bonds, 1922. Registered. Trustees, The Official Trustees of Charitable Funds.

"LLOYDS BANK" BED. 1920.

Named in the Dreadnought Hospital as a tribute to the fortitude and resource of British Seamen during the Great War, in consideration of annual subscription of fifty pounds from Lloyds Bank, Ltd.

"LACEY" BED. 1920.

A sum of £100 contributed by Miss M. LACEY, towards the endowment of a Bed in the Dreadnought Hospital, Greenwich. Invested in £113 11s. 5 per cent. War Stock, 1929-1947. Trustees, Official Trustees of Charitable Funds.

"THE BUENOS AIRES" BED (1). 1920.

Endowed in the Dreadnought Hospital, by a contribution of £1,000 collected in Buenos Aires by Mr. and Mrs. MORRIS. £1,194 16s. 5d. 5 per cent. War Stock, 1929-1947. Trustees, Official Trustees of Charitable Funds.

"THE BUENOS AIRES" BED (2). 1920.

Endowed in the Dreadnought Hospital, by a further contribution of £1,000, collected in Buenos Aires by Mr. and Mrs. MORRIS. £1,168 12s. 9d. 5 per cent. War Stock, 1929-1947. Trustees, Official Trustees of Charitable Funds.

"THE ALEC HAMMOND" BED. 1920.

Endowed in the Dreadnought Hospital, by a gift of £1,000. £1,168 12s. 9d. 5 per cent. War Stock, 1929-1947. Trustees, The Official Trustees of Charitable Funds.

THE "REYNOLDS" BED. 1920.

Endowed in the Albert Dock Hospital, by a gift of £1,000 from Captain G. N. REYNOLDS, M.C., and Mrs. REYNOLDS. £1,090 11s. 10d. 5 per cent. War Stock, 1929-1947. Trustees, The Official Trustees of Charitable Funds.

"MEMBERS OF LLOYD'S, MARINE INSURANCE COMPANIES AND SHIPOWNERS' TRUST" 1920.

A Bed endowed in the Dreadnought Hospital, by a contribution of One Thousand Pounds, on the occasion of the Sea Services' Commemoration, 4th August, 1919. £1,212 Corporation of London 5 per cent. Stock, 1945-1965. Trustees, The Official Trustees of Charitable Funds.

THE "BUENOS AIRES" BED. 1920.

Endowed in King George's Sanatorium for Sailors, Bramshott, Hants, by a contribution of £1,000 collected by Mr. and Mrs. MORRIS. £1,169 10s. 8d. 5 per cent. War Stock, 1929-1947. Trustees, Official Trustees of Charitable Funds.

THE "ANGAS" WARD. 1920.

Endowed in King George's Sanatorium for Sailors, Bramshott, Hants, by Mrs. ANGAS. £1,169 10s. 8d. 5 per cent. War Stock, 1929-1947. Trustees, Official Trustees of Charitable Funds.

"SEAMEN'S HOSPITAL AID COMMITTEE" BED (1). 1921.

Endowed by Seamen's Hospital Aid Committee in Dreadnought Hospital, Greenwich. Invested in £1,085 15s. 11d. 5 per cent. War Stock, 1929-1947. Trustees, Official Trustees of Charitable Funds.

"INCHCAPE" FUND.

For endowment of King George's Sanatorium for Sailors, £70,000. Invested in £10,100 6 per cent. Ceylon Inscribed Stock, £11,113 8s. 5 per cent. War Loan 1929-47 Stock, £10,350 6 per cent. Union of South Africa Stock, 1930-40, 10,500 5½ per cent. Glasgow Corporation, 1935-50, £14,250 4 per cent. London Midland & Scottish Rly. Debenture Stock, £14,400 4 per cent. Southern Rly. Debenture Stock, £1,1363 1s. 5d., London County 5 per cent. Stock. Trustees, Official Trustees of Charitable Funds.

"DUKE OF CONNAUGHT" WARD.

Endowed in King George's Sanatorium for Sailors, Bramshott, Hants, by a contribution of £1,000 from King George's Fund for Sailors. Invested in £997 8s. New Zealand 6 per cent. Inscribed Stock 1936-51. Trustees, Official Trustees of Charitable Funds.

"DUKE OF YORK" WARD.

Endowed in King George's Sanatorium for Sailors, Bramshott, Hants, by a contribution of £1,000 from King George's Fund for Sailors. Invested in £1,062 5s. 9d. Sheffield Corporation 5½ per cent. Redeemable Debenture Stock 1941-51. Trustees, Official Trustees of Charitable Funds.

THE "SHANGHAI" BED.

Endowed in King George's Sanatorium for Sailors, Bramshott, Hants, by a contribution of £1,104 7s. 8d. received from the Kung Yik Cotton Spinning and Weaving Co., Ltd., and the Yangtze Cotton Mill, Ltd., per the Admiralty. Invested in £2,103 0s. 10d. India 3 per cent. Stock. Trustees, Official Trustees of Charitable Funds.

"FOX BATLEY" FUND. 1921.

Being a sum of £200 bequeathed to the Society by the late Mr. W. Fox BATLEY. Invested in £202 4s. 8d. Ceylon 6 per cent. Stock 1936-51. Trustees, Official Trustees of Charitable Funds.

THE "SHEERNESS" BED. 1921.

Endowed in the Dreadnought Hospital, by a contribution of £1,000 from Miss E. GOOD. Invested in £1,133 0s. 2d. 5 per cent. War Stock 1929-47. Trustees, Official Trustees of Charitable Funds.

THE "ROWDEN" FUND.

Being a gift of £500 Ordinary Stock of the Taff Vale Railway Co., from Major HARRY WETHERELL ROWDEN. Trustees, Official Trustees of Charitable Funds.

THE "McEACHARN" BED. 1922.

Endowed in the Dreadnought Hospital by a contribution of £1,000 from LADY McEACHARN, in memory of her husband, MALCOLM DONALD McEACHARN. Invested in £997 8s. 11d. 5 per cent. War Loan Stock, 1929-47. Trustees, Official Trustees of Charitable Funds.

THE "ORFORD-WALKER" BED. 1922.

Endowed in the Dreadnought Hospital by a bequest of £1,000 from Mrs. C. T. ORFORD, in memory of her husband and three brothers. Invested in £996 15s. 5d. 5 per cent. War Loan Stock, 1929-47. Trustees, Official Trustees of Charitable Funds.

THE "SWEDISH" BED. 1922.

Endowed in the Dreadnought Hospital by a gift of £1,000 from Stevedore J. J. HOVEY, as a tribute to Swedish Seamen. Invested in £1,004 6s. 9d. 5 per cent. War Loan Stock, 1929-47. Trustees, Official Trustees of Charitable Funds.

THE "LAMBERT" BED. 1922.

Endowed in the Dreadnought Hospital by a sum of £1,000 bequeathed by Professor CARLTON JOHN LAMBERT, M.A., F.R.A.S., as a memorial to Seamen. Invested in £1,004 6s. 9d. 5 per cent. War Loan Stock, 1929-47. Trustees, Official Trustees of Charitable Funds.

THE "ANNIE BARNES" BEDS. 1922.

A bed endowed in each of the following Institutions—the Dreadnought Hospital, King George's Sanatorium, and the Angas Convalescent Home—by a bequest of £3,000 from Miss ANNIE BARNES, to benefit Sailors, received per SIR WALTER TROWER, Executor. Invested in £3,013 0s. 3d. 5 per cent. War Loan Stock, 1929-47. Trustees, Official Trustees of Charitable Funds.

THE "ANGAS" BED. 1922.

Endowed in the Dreadnought Hospital by a gift of £1,000 from Mrs. ANGAS. Invested in £1,004 6s. 9d. 5 per cent. War Loan Stock, 1929-47. Trustees, Official Trustees of Charitable Funds.

THE "CEYLON" BED FUND. 1922.

A sum of £615 6s. 8d. collected in Ceylon towards the endowment of a bed in King George's Sanatorium. Invested in £615 13s. 9d. 5 per cent. War Loan Stock, 1929-47. Trustees, Official Trustees of Charitable Funds.

"SHANGHAI SILVER THIMBLE FUND" BED. 1922.

A sum of £646 18s. 4d. contributed by the SHANGHAI SILVER THIMBLE FUND towards the endowment of a bed in the Dreadnought Hospital. Invested in £647 6s. 5 per cent. War Loan Stock, 1929-47. Trustees, Official Trustees of Charitable Funds.

THE "SCHOOLS" BED FUND. 1922.

A sum of £750 9s. contributed by various Schools towards the endowment of a bed in the Angas Convalescent Home. Invested in £748 16s. 9d. 5 per cent. War Loan Stock, 1929-47. Trustees, Official Trustees of Charitable Funds.

SEAMEN'S HOSPITAL AID COMMITTEE BED (2). 1923.

Endowed by Seamen's Hospital Aid Committee in Dreadnought Hospital. The gift of Freemasons, £1,000. Invested in £994 3s. 7d. 5 per cent. War Stock, 1929-47. Trustees, Official Trustees of Charitable Funds.

SEAMEN'S HOSPITAL AID COMMITTEE BED (3). 1923.

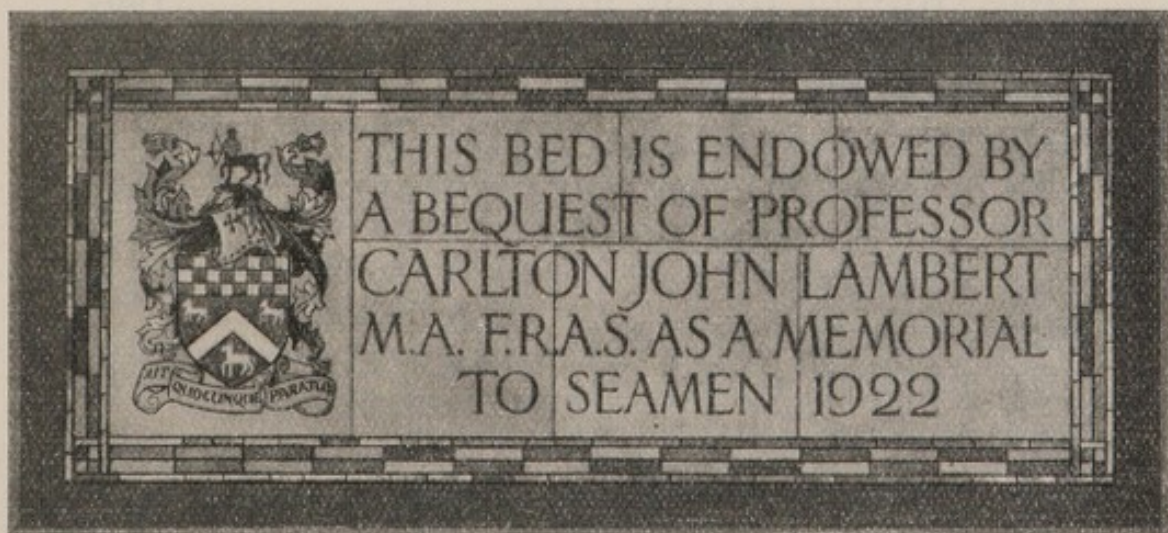
Endowed by Seamen's Hospital Aid Committee in Dreadnought Hospital. Invested in £301 11s. 10d. 5 per cent. New South Wales Stock, 1932-42. Trustees, Official Trustees of Charitable Funds.

THE "DOUGLAS VERNON COW" BED. 1923.

Endowed in the Dreadnought Hospital by a gift of £1,000 from Mr. DOUGLAS COW. Invested in £1,167 London Midland & Scottish Rly. 4 per cent. Preference Stock, 1923. Trustees, Official Trustees of Charitable Funds.

THE MOORSOM TRUST BED (1). 1923. THE MOORSOM TRUST BED (2). 1923.

Endowed in the Dreadnought Hospital, Greenwich, in memory of Sir ROBERT MOORSOM, H.M.S. "Revenge," Trafalgar. Captain WILLIAM MOORSOM, H.M.S. "Diadem," Crimea. £1,800 received from King George's Fund for Sailors for the above endowments. Invested in £2,356 10s. 8d. 3½ per cent. Conversion Stock, 1961. Trustees, Official Trustees of Charitable Funds.



ONE OF THE TABLETS IN MOSAIC OVER AN ENDOWED BED.

£1,000 Endows a Bed for all time.

NAMED BEDS AND WARDS

In the Hospitals and the Convalescent Home of the
SEAMEN'S HOSPITAL SOCIETY.

"D."—Dreadnought; "A.D."—Albert Dock; "A.H."—Angas Home; "SAN."—Sanatorium; "H.T.D."—Hospital for Tropical Diseases.

Name of Bed or Ward.	Year.
THE CHARLTON BED, "D."	1890
THE JENNINGS BED, "A.D."	1891
THE GOTHIC BED, "A.D."	1893
THE DONALD CURRIE WARD, "D."	1896
THE COOTE BED, "A.D."	1897
THE QUEEN VICTORIA BED, "A.D."	1897
THE SIR WILLIAM MAXWELL COT, "A.D."	1899
THE P. & O. BED, "A.D."	1899
THE NAIRNE BED, "A.D."	1899
THE MALCOLM CAMPBELL BED, "A.D."	1902
THE ARGONAUT BED, "A.D."	1902-6
THE TRINITY HOUSE BED, "A.D."	1904
THE BUCKWELL BED, "D."	1906-10
THE BERTHA COT, "D."	1907
THE CHRYSANTHEMUM BED, "D."	1908
THE HARRIETTE McILWRAITH BED, "D."	1909
THE ANNIE ZUNZ WARD, "D."	1910
THE LAW BED, "D."	1911
THE GEORGE BUSK BED, "D."	1911
THE FRASER WARD, "D."	1911
THE MAUDE ASHLEY BED, "D."	1912
THE MAUDE ASHLEY COT, "D."	1912
THE MAUDE ASHLEY BED, "A.D."	1916
THE STIDOLPH BED, "D."	1913
THE CHAMBERLAIN WARD, "H.T.D."	1913
THE BEVAN BED, "D."	1915

Name of Bed or Ward.	Year.
THE S. A. OXTOBY BED, "D."	1915
THE GERALD LEATHER BED, "D."	1915
THE SILVERTOWN COT, "A.D."	1917
THE HONG KONG BEDS (4), "D."	1917
THE JACOBS BED, "D."	1917
THE BURMA BED, "H.T.D."	1917
THE CHERRY BLOSSOM BED, "D."	1918
THE GORDON BED, "A.H."	1918
THE HARRIETTE ANNE McILWRAITH BED, "A.H."	1918
SIR WALTER BECKER BED, "A.H."	1918
KING GEORGE'S FUND FOR SAILORS BED, "A.H."	1918
OVERSEAS BRANCH OF THE NAVY LEAGUE BED, "A.H."	1918
THE JULIAN HENRY BED, "A.D."	1918
THE BRITISH RED CROSS AND ORDER OF ST. JOHN OF JERUSALEM FUND, "H.T.D."	1919
THE SILVER THIMBLE WARD, "D."	1919
THORNTON HEATH BED. ITALIA BED.	
WIMBLEDON & MERTON BED. ALDERNEY & SARK BED.	
NOTTINGHAM BED. GUERNSEY BED.	
LONDON BED. JERSEY BED.	
THE "QUIVER" BED.	
THE STANLEY MAUDE WARD, "H.T.D."	1919
THE ANGAS BED, "A.H."	1919
THE BALTIC AND LLOYD'S AMBULANCE UNIT COT, "A.H."	1919
THE BRITISH AMERICAN WAR RELIEF FUND OF PHILADELPHIA BED, "D."	1919
THE GULLIVER BED, "D."	1919
THE HAMILTON CANADA BED, "D."	1919
THE LADIES' EMERGENCY COMMITTEE OF THE NAVY LEAGUE BED, "D."	1919
THE LADIES' EMERGENCY COMMITTEE OF THE NAVY LEAGUE BED, "A.H."	1919

Name of Bed or Ward.	Year.
THE NORMAN AUSTIN TAYLOR BED, "A.H."	1918
THE PERTSHIRE BED, "D."	1919
THE SEVENOAKS BED, "A.H."	1919
THE SMYTH BED, "D."	1919
THE MINE SWEEPERS' BED, "D."	1920
LLOYDS BANK BED, "D."	1920
LACEY BED, "D."	1920
BUENOS AIRES BED No. 1, "D."	1920
BUENOS AIRES BED No. 2, "D."	1920
BUENOS AIRES BED, "SAN."	1920
ALEC HAMMOND BED, "D."	1920
REYNOLDS' BED, "A.D."	1920
MEMBERS OF LLOYD'S, MARINE INSUR- ANCE COMPANIES & SHIPOWNERS' TRUST, "D."	1920
ANGAS WARD, "SAN."	1920
SEAMEN'S HOSPITAL AID COMMITTEE FUND, "D."	1921
SHEERNESS BED, "D."	1921
SHANGHAI BED, "SAN."	1921
INCHCAPE WARD, "SAN."	1921
DUKE OF YORK WARD, "SAN."	1921
DUKE OF CONNAUGHT WARD, "SAN."	1921
THE ANGAS BED, "D."	1922
THE McEACHARN BED, "D."	1922
THE ORFORD-WALKER BED, "D."	1922
THE SWEDISH BED, "D."	1922
THE LAMBERT BED, "D."	1922
THE ANNIE BARNES BED, "D."	1922
THE ANNIE BARNES BED, "A.H."	1922
THE ANNIE BARNES BED, "SAN."	1922
SEAMEN'S HOSPITAL AID COMMITTEE BED No. 2, "D."	1923
THE DOUGLAS VERNON COW BED, "D."	1923
THE MOORSOM TRUST BED, No. 1, "D."	1923
THE MOORSOM TRUST BED, No. 2, "D."	1923

£1,000 Endows a Bed in perpetuity.

Annual Number of Patients Treated by the Seamen's Hospital Society since its Establishment.

Year.	GREENWICH.		TOTAL.	Year.	GREENWICH.		TOTAL.	Royal Albert Dock Hospital.		Hospital for Tropical Diseases.	ANGAS HOME.	King George's Room for Sailors.	DISPENSARIES.		TOTAL.
	In.	New Out.			In.	New Out.		In.	New Out.				Well Street Dock Road.	Gravesend.	
1821	413	...	413	1873	10837	64372	178609
1822	788	...	788	1874	1905	1515	3450
1823	919	...	919	1875	2058	1509	3567
1824	1249	...	1249	1876	1856	1885	3541
1825	1481	...	1481	1877	2108	3786	4892
1826	1854	...	1854	1878	2077	3080	5167
1827	2124	...	2124	1879	1549	3004	4553
1828	1877	...	1877	1880	1740	3084	4824
1829	1755	...	1755	1881	1808	2825	4804
1830	1868	...	1868	1882	1878	3621	6889
1831	2017	...	2017	1883	1881	3621	7808
1832	2243	...	2243	1884	1882	3710	8110
1833	2201	...	2201	1885	2216	4859	8921
1834	2492	...	2492	1886	2261	5825	7290
1835	2341	...	2341	1887	2065	3032	7454
1836	2510	...	2510	1888	2188	3253	7351
1837	2503	...	2503	1889	2248	3450	8162
1838	2579	...	2579	1890	2198	4440	8500
1839	2573	...	2573	1891	2342	4764	9112
1840	2564	...	2564	1892	2268	6810	1044
1841	2774	...	2774	1893	2254	5672	1201
1842	2787	...	2787	1894	2087	5965	13510
1843	2778	...	2778	1895	2095	6593	16485
1844	2415	...	2415	1896	2254	7119	3043
1845	2421	...	2421	1897	2107	8081	3220
1846	2312	...	2312	1898	1997	8120	3072
1847	2712	...	2712	1899	1987	10619	3327
1848	2581	...	2581	1900	1912	9793	3622
1849	2239	...	2239	1901	2044	9107	3828
1850	2095	...	2095	1902	1960	8182	3064
1851	2242	...	2242	1903	1913	8943	3150
1852	2316	...	2316	1904	1739	9104	2979
1853	2563	...	2563	1905	1719	8553	2885
1854	3007	...	3007	1906	1694	564	810
1855	2130	...	2130	1907	1861	10266	25280
1856	1851	...	1851	1908	1704	554	756
1857	1902	...	1902	1909	1851	15207	29602
1858	1782	...	1782	1910	1821	8542	3273
1859	1779	...	1779	1911	20197	8426	3248
1860	1779	...	1779	1912	1969	504	2869
1861	2244	...	2244	1913	1885	9448	694
1862	1923	...	1923	1914	1859	17212	32151
1863	1924	...	1924	1915	1885	13822	718
1864	1912	...	1912	1916	1859	910733	3375
1865	1927	...	1927	1917	1835	5168	2883
1866	2186	...	2186	1918	2433	6133	2869
1867	1939	...	1939	1919	2641	6798	616
1868	1893	...	1893	1920	2649	6907	1026
1869	1897	...	1897	1921	2254	7154	589
1870	2012	...	2012	1922	2471	8098	314
1871	2081	...	2081	1923	2408	7587	83
1872	2011	...	2011	1924	2514	8350	16843
							17140
							16609
							18229
							18508
							21665
							20663
							21282
							23360
							93485
							23360
							1057071

- a On board H.M.S. "Grampus" (60 Gun Ship).
b Transferred to H.M.S. "Dreadnought" (104 Gun Ship).
c Cholera epidemic—H.M.S. "Dreadnought" supplemented by H.M.S. "Devonshire" and "Bacchante."
d Transferred to H.M.S. "Calcutta" (120 Gun Ship); and her name altered to "Dreadnought."
e Transferred to Infirmary of Greenwich Hospital, on shore.
f Up to this year (with the exception of the first three years) the Annual Reports were made up to the 31st January.
g Eleven months only.
h Dispensary opened at Well Street, London Docks, 18/10/80.
i Hospital partly closed for repairs, 8/11/84 to 1/10/85.
j Dispensary opened at Gravesend, 1/10/87.
k Branch Hospital opened by H.R.H. the Princess of Wales, 24/3/90.
l Dispensary moved from Well Street to 51, East India Dock Road, 1/10/91.
m The U. W. Floor emptied in readiness for Cholera cases during a part of the year.
n Branch Hospital enlarged to 50 Beds
o Out-Patient Department enlarged and re-organized.
p Out-Patient Department closed from August 7th, 1914.
q Angas Home opened at Cudham, 8th July, 1918.
r Hospital for Tropical Diseases opened 9/2/20.
s Gravesend Dispensary closed June, 1921.
t King George's Sanatorium for Sailors opened by H.R.H. the Duke of York, 12/7/21.

TABLE showing the different Countries to which the In-patients treated by the Society belonged.

	From 1st Jan. to 31st Dec., 1923.	Total number since foundation.		From 1st Jan. to 31st Dec., 1923.	Total number since foundation.
England	3,050	132,309	<i>Brought forward ..</i>	4,051	202,105
Scotland	212	17,169	Ionian Isles	6
Ireland	148	14,244	Italy	3	1,825
Wales	41	3,730	Jamaica	60
Channel Islands ..	14	666	Japan	38	634
Abyssinia	4	Madagascar	1	2
Aden	1	28	Madeira	3
Africa	45	1,329	Malay	1	38
Antigua	4	Malta	15	203
Arabia	4	183	Mauritius	89
Assyria	2	Mexico	8
Australia	57	900	Newfoundland	2	26
Austria	2,984	New Zealand	14	332
Azores	2	Norway	67	9,229
Barbados	60	Nova Scotia	6
Belgium	6	260	Palestine	12
Bermuda	1	10	Persia	12
Brazil	56	Peru	2
British Colonies (before detailed classification)	..	537	Philippines	4
British Guiana ..	5	38	Poland	2	47
Bulgaria	1	Portugal (including Goa)	11	1,391
Canada	15	2,611	Roumania	2	26
Cape Verde Islands	2	Russia	22	1,866
Ceylon	3	81	Samoa	6
Chili	3	25	St. Helena	3
China	56	1,731	St. Vincent	5
Cochin China	4	Seychelles	9
Corsica	2	Sierra Leone	1	16
Crete	4	South Africa	70
Cuba	4	South America	6	614
Cyprus	1	15	South Sea Islands	306
Curaçoa	1	Spain	4	940
Denmark	15	3,310	Sweden	59	7,540
Dominica	1	Switzerland	1	67
East Indies	5,684	Straits Settlements	7
Egypt	4	102	Tasmania	1	38
Finland	21	3,178	Trinidad	8
France	2	1,238	Turkey	2	138
Germany	25	5,111	Turkey in Asia	1	8
Gibraltar	3	United States	36	4,472
Greece	6	548	Uruguay	1
Greenland	1	Venezuela	1
Holland	12	1,306	West Indies	22	3,831
Iceland	21	Zanzibar	6
India	304	2,606	Born at Sea	228
			Unknown	3	96
<i>Carried forward ..</i>	4,051	202,105	<i>Total</i>	4,365	226,336

LEGACIES RECEIVED.

		£	s.	d.	£	s.	d.
1823	John Forbes, Esq. (duty paid by Sir Chas. Forbes, Bart.) ..				1,000	0	0
1824	Thomas Warre, Esq. (duty deducted) ..	90	0	0			
..	William Nollekens, Esq., with interest ..	20	3	10			
					110	3	10
1823	Rev. J. Legrew, from Mrs. Phipps, deceased ..				50	0	0
1831	Mr. Matthew Capponi (Surgeon, R.N.) ..				97	9	5
1832	Adam Ahlback (a Patient) ..	10	0	0			
..	Captain Hugh Reid (duty deducted) ..	90	0	0			
..	William Simson, Esq. (duty deducted) ..	90	0	0			
					190	0	0
1833 to 1841	John Lydekker, Esq. ..	10,295	11	4			
..	Ditto stock ..	48,434	16	11			
..	Executors of the late J. H. Tritton, Esq. ..	18	0	0			
..	Sundries by Patients ..	16	6	2			
					58,764	14	5
1834	Mr. Richard Neale ..	81	9	0			
..	Thomas Snodgrass, Esq., Bank Stock ..	1,000	0	0			
					1,081	9	0
1835	Daniel Ince, Esq., with interest ..				303	19	1
1836	J. J. Holford, Esq. (free of duty) ..	100	0	0			
..	Emuel Basball, Seaman (a Patient) ..	21	10	3			
					121	10	3
1837	Miss Elizabeth Cook (duty deducted) ..	270	0	0			
..	Thomas Williams (a Patient) ..	15	0	0			
					285	0	0
1838	Colonel William Charles Alston (free of duty) ..	100	0	0			
..	Mrs. Sarah Wakefield (duty deducted) ..	450	0	0			
..	Executors of the late Robert Manning, Esq., of Mexico ..	431	4	4			
					981	4	4
1839	Sundries by Patients ..				29	15	6
1840	Mrs. Catherine Veronica Miller (less duty), stock ..	1,000	0	0			
..	Sir T. B. Mash ..	10	0	0			
..	Commander Otway ..	21	0	0			
					1,031	0	0
1841	Miss Mary Parish ..	91	19	0			
..	Captain John Renwick ..	90	0	0			
..	Thomas Barry, Esq. (free of duty) ..	100	0	0			
..	Charles Davy (duty deducted) ..	45	0	0			
					326	19	0
1842	Miss Brunton, Administratrix of William Brunton Esq. ..	485	0	9			
..	Mrs. Elizabeth Woodcock (free of duty), stock ..	400	0	0			
..	The Marquis of Hertford (duty deducted) ..	90	0	0			
..	Mrs. Mary Simmonds (duty free) stock ..	235	0	0			
..	Mrs. Elizabeth Salmon (duty free) ..	100	0	0			
..	Joseph Blyth, Esq. (duty deducted) ..	135	0	0			
..	F. P. Stubbs, Esq., and interest ..	503	6	8			
..	Anthony Baker (a Patient) ..	33	12	4			
					1,981	19	9
1844	James Clegg, Esq. (duty deducted) ..	900	0	0			
..	Solomon Levy, Esq., of Sydney, and Interest ..	241	6	5			
..	Mr. William Waters ..	1,909	16	3			
					2,051	2	8
1845	Francis Baily, Esq. (duty deducted) ..	180	0	0			
..	Christian Tawk, Esq. ..	100	0	0			
..	Harry Charrington, Esq. (duty free) ..	500	0	0			
..	Robert Lowrey, Esq. ..	1,558	13	0			
..	Ditto stock ..	2,131	13	9			
..	Mrs. Ann Eaton, stock ..	200	0	0			
..	Mrs. Sharp ..	100	0	0			
..	John Moore, Esq. ..	30	0	0			
					4,900	6	9
1846	The late Captain Margoty (per his widow) ..	21	0	0			
..	Mrs. Margoty ..	45	0	0			
..	One-third of intended bequest of the late J. Somes, Esq. ..	333	6	8			
..	Christian Thornstedt (a Patient) ..	6	0	0			
					405	6	8
1847	Henry Wright, Esq., with interest ..	596	12	8			
..	Captain John Locke, H.C.S. (duty deducted) ..	270	0	0			
					866	12	8
1849	Captain John Simpson, R.N. ..	18	0	0			
..	Robert Newman Hunt, Esq. (duty free) ..	500	0	0			
..	Rev. George Atwick (duty deducted), stock ..	1,372	10	6			
					1,890	10	6

		£	s.	d.	£	s.	d.
1850	John Henry Peacock, Esq. (duty free)	100	0	0			
"	Lieut. C. C. Powell, R.N.	10	0	0			
"	Lieut.-Col. H. A. Purchas, H.C.S.—						
	1st Instalment, 1850	1,166	4	10			
	2nd .. 1854	137	8	10			
	3rd .. 1893	47	2	2			
"	Vice-Admiral the Hon. D. P. Bouverie (duty free)	100	0	0			
"	Captain J. W. Trotter, R.N.	10	0	0			
"	D. Forbes (a Patient)	11	8	9			
"	Lady Colville	10	0	0			
"	Benjamin Hill, Esq., with interest	319	0	5			
"	James George Boucher, Esq.	100	0	0			
					2,011	5	0
1853	Capt. Edw. John Johnson, R.N.				45	0	0
1854	Miss Louisa Storck	200	0	0			
"	John Wild, Esq.	105	0	0			
"	Miss Elizabeth Lowry (duty deducted)	22	10	0			
					327	10	0
1855	T. A. Hewson, Esq., with interest	1,159	2	4			
"	Captain Rogers Lawrence	493	12	4			
					1,652	14	8
1856	John Markham Davison, Esq., R.N.	5	0	0			
"	Mrs. D. Kennedy, with interest	109	16	10			
"	Miss Charlotte Rebecca Howard, with interest	1,021	15	7			
					1,136	12	5
1857	Joseph C. Bourley, late Seaman on board the "Monarchy"	35	5	3			
"	Mrs. Moore (duty deducted)	270	0	0			
"	E. M. Van Butchell, Esq.	100	0	0			
"	Lady Scott (duty deducted)	90	0	0			
"	Captain Walter Pitcairn (duty deducted)	45	0	0			
"	Lord Middleton	100	0	0			
					640	5	3
1858	Edmund Clegg, Esq. (duty deducted)	90	0	0			
"	Mr. Samuel John Lowe (duty deducted)	87	3	6			
"	Capt. H. Fitzgerald, R.N., and interest (duty deducted)	9,551	14	2			
"	Thomas Dunbar, Esq. (duty deducted)	85	19	0			
"	Captain Le Blanc (duty deducted)	90	0	0			
"	Miss Mash, Seymour Place (duty deducted)	22	10	0			
"	Harry Osborn Cureton, Esq. (duty deducted), stock	900	0	0			
					10,827	6	8
1859	Miss Elizabeth Watham (duty deducted), stock	270	0	0			
"	George Holgate Foster, Esq.	1,000	0	0			
"	George Maguire, Esq. (duty deducted)	90	0	0			
"	James Cavan, Esq.	100	0	0			
"	Mr. Peter Macdonald	100	0	0			
"	James Harris Bartlett, Esq., and interest	93	19	4			
"	Ditto stock	782	2	10			
"	Charles Kelsall, Esq.	8	15	9			
"	Ditto stock	200	0	0			
"	Mrs. Mary Johnson, late of Marylebone	500	0	0			
					2,874	17	11
1860	Major-General Towers, stock	200	0	0			
"	Joshua Drinkald, Esq.	3,289	14	8			
"	Benjamin Thomas Crichton, Esq.	990	10	0			
"	Ditto stock	22,534	14	7			
					27,014	19	3
1861	William Goodson, Esq., Surgeon, R.N., stock	500	0	0			
"	Commander John Bowerbank, R.N. (duty deducted)	90	0	0			
"	Mrs. Sheddan Watson (duty deducted)	450	0	0			
"	George Wellden, Esq. (duty deducted)	90	0	0			
					1,130	0	0
1862	Admiral Sir John West, K.C.B.				30	0	0
1864	James Navin, Esq.	90	0	0			
"	Mrs. Plampin, Admiral's Widow	13	3	3			
"	Ditto stock (less duty)	1,000	0	0			
					1,103	3	3
1865	Henry D. Blyth, Esq.	500	0	0			
"	Mr. Matthew Eltham (Lighterman)	337	10	0			
"	F. R. Magenis, Esq.	200	0	0			
"	Richard Thornton, Esq. (duty free)	2,000	0	0			
"	J. G. Cole, Esq. (duty free)	100	0	0			
"	Miss M. E. Miller (duty free)	100	0	0			
					3,237	10	0

		£	s.	d.	£	s.	d.
1866	William Borradaile, Esq. (duty free)	500	0	0			
"	Captain John Sykes, R.N. (duty free)	100	0	0			
"	George Wheelhouse, Esq., and interest	468	1	9			
"	James Gates, Esq.	87	12	6			
"	W. Stutters (late Patient)	24	12	2			
"	Captain A. D. White, with interest	49	9	9			
					1,229	16	2
1867	Madame de Bosset	450	0	0			
"	Mr. J. H. Cooper, Mariner (duty free)	100	0	0			
"	Miss W. M. Copp (duty free)	300	0	0			
					850	0	0
1868	Alexr. Brodie, Esq. (duty free), stock	200	0	0			
"	Felix Slade, Esq. (duty free)	100	0	0			
"	Richard Green, Esq., and interest	2,100	0	3			
					2,409	0	3
1869	W. T. Meyer, Esq.	300	0	0			
"	J. Griffith Frith, Esq.	300	0	0			
"	Lord Henry Seymour (share of bequest "aux Hospices de Londres et Paris") 1st instalment (1869)	£400	0	0			
	2nd instalment (1870)	82	0	0			
	3rd .. (1872)	100	0	0			
	4th .. (1873)	83	0	0			
	5th .. (1876)	17	0	0			
	6th .. (1883)	34	0	0			
	7th .. (1885)	115	0	0			
	8th .. (1886)	7	10	0			
	9th .. (1901)	25	0	0			
	10th .. (1911)	9	0	0			
					872	10	0
"	William John Hall, Esq., and interest (duty deducted)	2,048	7	0			
"	Captain D. O'Brien (duty deducted)	90	0	0			
"	Dowager Lady Truro, stock	3,837	10	2			
	1st instalment (1869)	£1,969	8	3			
	2nd .. (1889)	682	17	0			
					2,652	5	3
"	William Hollins, Esq.	50	11	6			
"	Ditto stock	500	0	0			
					10,711	3	11
1870	Miss Lucretia Tuckett (free of duty)	100	0	0			
"	Captain William Rayner Bes (duty deducted)	100	0	0			
					200	0	0
1871	Miss Sarah Dorset	89	13	4			
"	Bridger Cattley, Esq.	100	0	0			
					189	13	4
1872	Mrs. Charlotte Elizabeth Walmesley	100	0	0			
"	Mrs. Sarah Ann Humphreys	100	0	0			
					200	0	0
1873	James Prosser, Esq.	87	4	2			
"	Thomas Oak, Esq.	1,094	5	8			
"	Ditto stock	1,002	10	11			
"	Miss Catherine Prosser, stock	100	0	0			
"	Miss Margaretta Jane Robertson	450	0	0			
"	Henry Adams (late Patient)	2	19	0			
					2,736	19	9
1874	James Blyth, Esq.	200	0	0			
"	John Quay (late Patient)	3	18	6			
					203	18	6
1875	Mrs. Sills Gibbons (duty free)	300	0	0			
"	Mrs. Elizabeth Liveing	10	0	0			
					310	0	0
1876	Mr. John Henderson, Pilot	10	0	0			
"	Mrs. S. Greene	19	19	0			
"	Mrs. Murray (free of duty)	100	0	0			
"	Miss M. Wales	15	0	0			
"	Thomas Kittrick, Esq.	19	19	0			
"	Admiral Sir W. Bowles, K.C.B.	180	0	0			
"	John Pitcairn, Esq.	19	19	0			
					364	17	0
1877	Hugh Davies Griffith, Esq. (duty free)	1,000	0	0			
"	Thomas Boys, Esq. (to purchase an annuity for 10 years)	5,524	1	5			
"	Ditto (balance)	113	1	8			
"	Ditto (additional in 1888)	3	5	4			
					6,640	8	5
1878	Robert Alexander Gay, Esq. (free of duty)	100	0	0			
"	William Schaw Lindsay, Esq. (free of duty)	200	0	0			
					300	0	0

						£	s.	d.	£	s.	d.
1894	Mrs. Sarah Marshall Jackson	250	0	0			
..	Robert Bussell, Esq.	200	0	0			
..	Lord Crewe	100	0	0			
..	Mrs. Ann Brown	500	0	0			
									1,050	0	0
1895	John Davis, Esq.	500	0	0			
..	Capt. T. Narramore Were	100	0	0			
..	Henry Hewetson, Esq.	105	0	0			
..	Mrs. Eldridge—Freehold Houses, Nos. 42 and 43, Douglas Place, Bayswater						
									705	0	0
1896	Mrs. Rosamond Bright Seton-Smith	450	0	0			
..	Martin Stuhre (late Hospital Carpenter)	2	10	0			
..	Capt. Richard Braine	100	0	0			
									552	10	0
1897	George Edwin Williams, Esq.	400	0	0			
..	William Waller, Esq.	3,000	0	0			
..	George Augustus Maiden, Esq.	468	17	0			
..	James Bourne, Esq.	444	18	1			
..	Thomas Brown Young, Esq.	2,036	12	10			
..	Samuel Salmon (Patient)	36	5	4			
									6,386	13	3
1898	Richard Gibbs, Esq.	500	0	0			
..	James Jaque Crawford (late Patient)	4	4	6			
..	James Connelly (late Patient)	50	0	0			
..	John Kelly (Seaman)	21	17	4			
..	Joel Wolff, Esq.	250	0	0			
..	Francis Gilbert, Esq.	2,000	0	0			
..	Miss Letitia Caroline Susannah Gannon	200	0	0			
									3,026	1	10
1899	Honourable Mrs. Louisa Hay	100	0	0			
..	Peter Lee (late Patient)	9	16	11			
..	Mrs. Mary Ann Perrins Perrins	500	0	0			
..	Mrs. Sarah Beach	300	0	0			
..	Baron Ferdinand de Rothschild	3,235	8	8			
..	Martin Pratt, Esq.	500	0	0			
									4,645	5	7
1900	William Wilson, Esq.	5,542	3	7			
..	W. McLellan (late Patient)	5	0	0			
..	John Wansey Nathaniel Bentley, Esq.	500	0	0			
..	Miss N. B. Price	25	0	0			
..	R. B. Sanders, Esq.	100	0	0			
..	John Mackie, Esq., stock	500	0	0			
									6,672	3	7
1901	Lewis Alfred Flint, Esq.	180	0	0			
..	Mrs. Eliza Mackenzie	21	0	0			
..	Lord Henry Seymour	25	0	0			
..	Richard Bowerman West, Esq.	500	0	0			
..	Miss Maria Brown	45	0	0			
									771	0	0
1902	Mrs. Elizabeth Garrard	86	17	0			
..	Edward Jones, Esq.	45	0	0			
..	Benjamin Buck Greene, Esq.	100	0	0			
..	Frederick Gilbert, Esq.	2,000	0	0			
..	Miss Angelina West	50	0	0			
..	Mrs. Isabella Campbell	500	0	0			
..	Francis Thos. Freeman, Esq.	1,000	0	0			
..	John Hewling Luson, Esq., stock	180	0	0			
									3,961	17	0
1903	Bridger Cattley, Esq.	68	18	1			
..	Frederick Garrard, Esq.	55	14	10			
..	Ditto stock	4,887	2	10			
..	Richard Bishop, Esq.	300	0	0			
..	Capt. Wm. Cashman, R.N.	450	0	0			
..	John Henry Reed, Esq.	19	19	0			
..	Thomas Brown Young, Esq.	74	9	4			
..	Ditto stock	1,820	1	8			
									7,676	5	9

						£	s.	d.	£	s.	d.
1904	Admiral W. A. J. Heath, C.B.	100	0	0			
..	William Markham, Esq.	45	0	0			
..	Mr. John Williams (late Patient)	152	4	2			
..	Robert Goulding Ledger, Esq.	100	0	0			
..	Archibald Day, Esq.	200	0	0			
..	Theodore Lloyd, Esq.	1,000	0	0			
..	John Appleton, Esq., stock	1,319	7	8			
									2,916	11	10
1905	G. W. Tripp, Esq.	200	0	0			
..	J. T. Smith, Esq.	1,000	0	0			
..	Mrs. M. J. Otter	180	0	0			
..	C. H. Lear, Esq.	550	0	0			
..	J. H. Lucking, Esq.	1,000	0	0			
..	Lady McCulloch	150	0	0			
..	Mrs. E. S. Smalbridge	90	0	0			
									3,170	0	0
1906	Horace Harral, Esq.	420	0	0			
..	Wm. Buckwell, Esq.	500	0	0			
..	Fredk. Chas. Pickernell, Esq.	2,000	0	0			
									2,920	0	0
1907	W. T. Carver, Esq.	200	0	0			
..	Robert Barnes, Esq., M.D., F.R.C.S.	450	0	0			
..	Lady Cox	100	0	0			
..	Miss Caroline Everard	500	0	0			
..	J. L. Toole, Esq.	90	0	0			
									1,340	0	0
1908	Mrs. S. A. White	100	0	0			
..	Jesse Jacob, Esq.	100	0	0			
..	H. D. Griffith, Esq.	100	0	0			
..	Miss Caroline Everard	76	19	8			
..	G. Fielder, Esq.	383	6	1			
..	Mrs. Eliza Steedman	300	0	0			
									1,060	5	9
1909	W. White, Esq.	100	0	0			
..	J. A. Yates, Esq.	380	8	1			
									480	8	1
1910	Wm. Buckwell, Esq.	327	19	1			
..	Wm. Bevan, Esq.	1,000	0	0			
..	H. Wray Browne, Esq.	25	0	0			
..	Louisa Sophia Lady Goldsmid	100	0	0			
..	H. Keen, Esq.	20	0	0			
..	Trustees of "Zunz" Bequest	3,000	0	0			
									4,472	19	1
1911	Louisa Sophia Lady Goldsmid (2nd Instalment)	200	0	0			
..	D. J. Woodman	450	0	0			
..	E. Spencer	100	0	0			
..	Thomas Brandreth (and interest)	522	4	9			
..	Lord Henry Seymour	9	0	0			
..	James Wiseman	10	0	0			
..	Mrs. Mary Ann Fitzherbert Fraser	4,500	0	0			
									5,791	4	9
1912	Mrs. Jolit	10	0	0			
..	Miss Elizabeth Manning	36	0	1			
									46	0	1
1913	F. Nelson (late Patient)	35	0	0			
..	J. Macdonald (late Patient)	30	18	11			
									65	18	11
1914	Tarbett Fleming	375	0	0			
..	Isabella Boustred	882	9	5			
..	Emily Boustred	772	13	11			
									2,030	3	4
1915	Wm. Bevan, Esq. (2nd Instalment)	1,452	1	6			
..	Miss S. A. Oxtoby (per her Executor)	1,000	0	0			
..	John Vicary, Esq. (per his Executor)	180	0	0			
..	Alexander Christie, Esq.	100	0	0			
..	Charles Nelson, Esq.	12	12	8			
..	Miss Marion Allen	200	0	0			
..	Horace Percy Sprigens, Esq.	179	19	5			
									3,124	13	7

							£	s.	d.	£	s.	d.
1916	Tarbett Fleming (2nd Instalment)	115	0	0			
..	Rev. Alfred G. K. L'Estrange	810	0	0			
..	Rt. Hon. Arnold Morley	250	0	0			
										1,175	0	0
1917	S. H. P. Glendinning	40	0	0			
..	A. Gearing	100	0	0			
..	J. T. Hart	50	0	0			
..	G. H. Beaver	500	0	0			
										690	0	0
1918	H. J. Chapman	50	0	0			
..	John Law	1,000	0	0			
..	T. G. Ivey	125	0	0			
										1,175	0	0
1919	Robert Nichol	100	0	0			
..	S. L. P. Geldart	271	15	7			
..	Montague George Jessett	121	2	4			
..	Rt. Hon. Arnold Morley (balance)			6 11			
..	Henry Harrison	3,000	0	0			
..	Thomas Hewetson	2,710	11	2			
										6,203	16	0
1920	Mrs. Medley	4,739	5	1			
..	F. G. Ivey	100	0	0			
..	Thos. Munday	250	0	0			
..	Lady Louise Goldsmith, Trustees of	240	0	0			
..	J. H. A. Frisby	25	0	0			
										5,354	5	1
1921	Henry Tyler	100	0	0			
..	Mrs. Head	500	0	0			
..	D. M. Currie	900	0	0			
..	Mrs. Haines	20	0	0			
..	W. E. Holding	100	0	0			
..	Robert Jardine	200	0	0			
..	Rev. Francis Allen Minnett	20	0	0			
..	Major Thomas Bott	381	0	9			
..	W. Fox Batley	205	12	0			
..	H. A. Frisby (Exors. of)	200	0	0			
										2,626	12	9
1922	Wm. Ashe	100	0	0			
..	Miss S. G. Dewe	258	13	4			
..	J. C. Geiselbrecht	168	2	6			
..	Mrs. Dowson	522	0	0			
..	Mrs. Medley (Balance of Legacy)	14	4	0			
..	Major Thomas Bott	100	0	0			
..	Sir Perceval Nairne (formerly Chairman, S. H. S.)	200	0	0			
..	Captain Wm. Cosens	100	0	0			
										1,462	19	10
1923	Cecil B. Miller	125	0	0			
..	George Burdick	100	0	0			
..	Alfred John Hirsch	1,000	0	0			
..	Mrs. Lupton	1,000	0	0			
..	William F. Goodiffe	450	0	0			
..	Major Thomas Bott	200	0	0			
..	Sir Frederick Cleeve, K.C.B. (formerly Chairman, S. H. S.)						
	(1st Instalment)						200	5	0			
..	Authorne Harris Wickenden	7,000	0	0			
..	David John Hewett	100	0	0			
..	Beatrice Atkinson	50	0	0			
..	Tomyns Reginald Browne	52	4	9			
..	Jesse Matthew Skudder	417	5	8			
										10,694	15	5

DREADNOUGHT HOSPITAL.

Financial Statistics for year ending 31st December, 1923, compared with those of the previous year, ending 31st December, 1922.

I. IN-PATIENTS.

(A)—Number of Beds and In-Patients.		Numbers in 1922.	Numbers in 1923.
(1) Number of Beds available for use		250	250
(2) Average number of Patients resident daily throughout the year, as counted and recorded daily		195.63	190.39
(3) Number of In-Patients in the Hospital at beginning of year		194	194
(4) " " " admitted during year		2,408	2,514
(5) " " " in the Hospital at the end of the year		194	165
(6) Average number of days each Patient was resident		29.65	27.64

Ascertained by multiplying the average number of Patients resident daily throughout the year by 365 and dividing the result by the number of Patients admitted during the year.

(B)—Annual Expenditure on In-Patients, apart from that of Out-Patients;

Average cost of each In-Patient per week; and average cost of each In-Patient.

The following figures do not include any charge for Rent, Rates and Taxes:—

	Expenditure on In-Patients in 1922.		Average cost of each In-Patient per week in 1922.		Expenditure on In-Patients in 1923.		Average cost of each In-Patient per week in 1923.	
	£	s. d.	£	s. d.	£	s. d.	£	s. d.
MAINTENANCE—								
(7) Provisions	6,824	4 3	13	4.55	6,674	13 0	13	5.36
(8) Surgery and Dispensary	1,359	13 6	3	7.75	1,463	16 7	2	11.39
(9) Domestic	5,352	14 10	10	5.93	4,350	0 1	8	9.16
(10) Establishment	885	4 5	1	8.83	1,245	5 2	2	6.10
(11) Salaries, Wages, &c.	12,286	1 6	1	4 1.08	12,618	4 1	1	5 5.05
(12) Miscellaneous Expenses	559	1 4	1	1.16	577	12 6	1	1.97
ADMINISTRATION—								
(13) Management	2,132	18 2	4	2.18	2,174	2 4	4	4.56
(14) Finance	1,119	12 8	2	2.34	1,086	11 5	2	2.27
	£31,019	10 8			£30,190	5 2		
Average total cost of each In-Patient per week			3	0 9.82			3	0 9.86
Average total cost of each In-Patient (calculated upon number of Patients treated to a conclusion)			12	17 7.64			11	17 5.25

II. OUT-PATIENTS.

(a) NUMBERS—		Numbers in 1922.	Numbers in 1923.
Total number of New Out-Patients		7,587	8,320
(2) Total number of Out-Patient attendances		55,303	57,425
(a) Number of Patients on Books at the beginning of the year			
(b) Number of Casualty Patients included in No. 1 above		3,797	4,170
(c) Number of Casualty Attendances included in No. 2 above		24,829	26,726

(b) ANNUAL EXPENDITURE on Out-Patients, and Average cost of each Out-Patient Attendance and of each Out-Patient.

	Expenditure on Out-Patients in 1922.		Average Cost per Out-Patient Attendance.		Expenditure on Out-Patients in 1923.		Average Cost per Out-Patient Attendance.	
	£	s. d.	£	s. d.	£	s. d.	£	s. d.
MAINTENANCE—								
(3) Provisions, including board	482	9 4	2.09		507	9 4	2.12	
(4) Surgery and Dispensary	1,575	17 9	6.84		1,515	13 11	6.34	
(5) Domestic	366	19 4	1.59		320	10 7	1.34	
(6) Establishment	18	19 9	.08		12	2 7	.05	
(7) Salaries and Wages	1,817	11 2	7.89		2,067	13 10	8.64	
(8) Miscellaneous	48	12 3	.21		50	4 7	.21	
ADMINISTRATION—								
(9) Management	185	9 4	.81		189	1 1	.79	
(10) Finance	97	7 2	.42		94	9 8	.39	
	£4,593	6 1			£4,757	5 7		
Average total cost per Out-Patient Attendance			1	7.93			1	7.83
Average cost per Out-Patient (calculated upon number of Out-Patients treated)			12	1.30			11	5.22

ALBERT DOCK HOSPITAL.

Financial Statistics for year ending 31st December, 1923, compared with those of the previous year, ending 31st December, 1922.

I. IN-PATIENTS.

(A)—Number of Beds and In-Patients.	Numbers in 1922.	Numbers in 1923.
(1) Number of Beds available for use	53	53
(2) Average number of Patients resident daily throughout the year, as counted and recorded daily	49.18	51.44
(3) Number of In-Patients in the Hospital at beginning of year	41	59
(4) admitted during year	837	790
(5) in the Hospital at the end of the year	59	52
(6) Average number of days each Patient was resident	21.44	23.7

Ascertained by multiplying the average number of Patients resident daily throughout the year by 365 and dividing the result by the number of Patients admitted during the year.

(B)—Annual Expenditure on In-Patients, apart from that of Out-Patients:

Average cost of each In-Patient per week; and average cost of each In-Patient.

The following figures do not include any charge for Rents, Rates and Taxes:—

	Expenditure on In-Patients in 1922.	Average cost of each In-Patient per week in 1922.	Expenditure on In-Patients in 1923.	Average cost of each In-Patient per week in 1923.
	£ s. d.	£ s. d.	£ s. d.	£ s. d.
MAINTENANCE—				
(7) Provisions	1,277 17 8	9 11.59	1,167 12 6	8 8.47
(8) Surgery and Dispensary	344 5 9	2 8.22	264 7 4	1 11.65
(9) Domestic	1,001 6 3	7 9.71	1,158 13 0	8 7.67
(10) Establishment	271 16 6	2 1.44	140 2 3	1 0.54
(11) Salaries, Wages, &c.	2,141 8 0	16 8.41	2,468 17 0	18 4.9
(12) Miscellaneous Expenses	108 10 4	10.16	102 5 5	9.15
ADMINISTRATION—				
(13) Management	450 17 7	3 6.2	402 3 6	2 11.99
(14) Finance	206 17 8	1 7.37	210 15 7	1 6.86
	<u>£5,802 19 9</u>		<u>£5,914 16 7</u>	
Average total cost of each In-Patient per week		2 5 3.1		2 4 1.24
Average total cost of each In-Patient (calculated upon number of Patients treated to a conclusion)		7 1 8.5		7 8 5.13

II. OUT-PATIENTS.

(a) NUMBERS—	Numbers in 1922.	Numbers in 1923.
(1) Total number of New Out-Patients	8,822	8,235
(2) Total number of Out-Patient Attendances	32,110	54,839
(a) Number of Patients on Books at the beginning of the year	—	—
(b) Number of Casualty Patients included in No. 1 above	5,437	5,165
(c) Number of Casualty Attendances included in No. 2 above	19,702	27,798

(b) ANNUAL EXPENDITURE on Out-Patients, and Average cost of each Out-Patient Attendance, and of each Out-Patient.

	Expenditure on Out-Patients in 1922.	Average cost per Out-Patient Attendance in 1922.	Expenditure on Out-Patients in 1923.	Average cost per Out-Patient Attendance in 1923.
	£ s. d.	s. d.	£ s. d.	s. d.
MAINTENANCE—				
(3) Provisions, including board	270 0 0	2.02	280 0 0	1.23
(4) Surgery and Dispensary	800 6 1	5.98	1,004 16 10	4.39
(5) Domestic	318 14 6	2.38	346 1 9	1.52
(6) Establishment	90 12 2	.68	46 14 1	.20
(7) Salaries and Wages	1,673 19 8	1 0.51	1,672 8 1	7.32
(8) Miscellaneous	27 2 7	.2	25 11 4	.11
ADMINISTRATION—				
(9) Management	79 11 3	.59	71 11 2	.31
(10) Finance	36 10 3	.28	25 8 8	.11
	<u>£3,296 16 6</u>		<u>£3,472 11 11</u>	
Average total cost per Out-Patient Attendance		2 0.34		1 3.19
Average cost per Out-Patient (calculated upon number of Patients treated)		7 5.69		8 5.2

HOSPITAL FOR TROPICAL DISEASES.

(Opened January, 1920).

Financial Statistics for year ending 31st December, 1923, compared with those of the previous year ending 31st December, 1922.

I. IN-PATIENTS.

	Numbers in 1922.	Numbers in 1923.
(A)—Number of Beds and In-Patients.		
(1) Number of Beds available for use	58	58
(2) Average number of Patients resident daily throughout the year, as counted and recorded daily	43·3	39·62
(3) Number of In-Patients in the Hospital at beginning of year ..	38	37
(4) admitted during year	592	530
(5) in the Hospital at the end of the year ..	37	40
(6) Average number of days each Patient was resident	26·7	27·28

Ascertained by multiplying the average number of Patients resident daily throughout the year by 365 and dividing the result by the number of Patients admitted during the year.

(B)—Annual Expenditure on In-Patients :

Average cost of each In-Patient per week ; and average cost of each In-Patient.

The following figures do not include any charge for Rent, Rates and Taxes :—

	Expenditure on In-Patients in 1922. £ s. d.	Average cost of each In-Patient per week in 1922. £ s. d.	Expenditure on In-Patients in 1923. £ s. d.	Average cost of each In-Patient per week in 1923. £ s. d.
MAINTENANCE—				
(7) Provisions.. 2,018 4 1	1 3 2·31	2,369 18 8	1 2 11·32
(8) Surgery and Dispensary 332 5 9	2 11·32	437 3 2	4 2·78
(9) Domestic 1,846 12 0	16 4·29	1,580 3 0	15 3·57
(10) Establishment 334 5 6	2 11·53	509 9 4	4 11·19
(11) Salaries, Wages, &c. 3,370 1 2	1 9 10·23	3,318 1 11	1 12 1·47
(12) Miscellaneous Expenses ..	. 213 2 10	1 10·66	133 4 8	1 3·48

ADMINISTRATION—

(13) Management	553	4 7	4	10·81	547	8 1	5	3·59
(14) Finance	243	7 11	2	1·87	236	4 3	2	3·44
	£9,511	3 10			£9,131	13 1		

Average total cost of each In-Patient per week ..	4 4	3·02	4 8	4·84
Average total cost of each In-Patient (calculated upon number of Patients treated to a conclusion)	16 0	9·33	17 6	6·63

KING GEORGE'S SANATORIUM FOR SAILORS, BRAMSHOTT PLACE, LIPHOOK, HANTS.

Financial Statistics for year ending 31st December, 1923, compared with those of the previous year, ending 31st December, 1922.

I.—IN-PATIENTS.

	Numbers in 1922.	Numbers in 1923.
(A)—Number of Beds and In-Patients.		
(1) Number of Beds available for use	80	80
(2) Average number of Patients resident daily, as counted and recorded daily	51·99	63·05
(3) Number of In-Patients in the Hospital at beginning of year ..	49	46
(4) " " " admitted during year	103	131
(5) " " " in the Hospital at the end of the year	46	57
(6) Average number of days each Patient was resident	184·23	175·67

Ascertained by multiplying the average number of Patients resident daily throughout the year by 365 and dividing the result by the number of Patients admitted during the year.

(B)—Annual Expenditure on In-Patients:

Average cost of each In-Patient per week: and average cost of each In-Patient.

The following figures do not include any charge for Rent, Rates and Taxes:—

	Expenditure on In-Patients in 1922.	Average cost of each In-Patient per week in 1922.	Expenditure on In-Patients in 1923.	Average cost of each In-Patient per week in 1923.
MAINTENANCE—				
	£ s. d.	£ s. d.	£ s. d.	£ s. d.
(7) Provisions	2,784 3 2	1 0 6·48	3,247 13 1	19 9·08
(8) Surgery and Dispensary	269 14 8	1 6·56	249 7 2	1 6·2
(9) Domestic	1,313 19 9	9 8·77	1,345 15 1	8 2·24
(10) Establishment	431 16 11	3 2·23	496 15 5	3 0·27
(11) Salaries, Wages, &c.	2,265 0 0	16 8·53	2,596 5 9	15 9·56
(12) Miscellaneous Expenses	151 14 3	1 1·43	239 14 6	1 5·5
ADMINISTRATION—				
(13) Management	559 0 11	4 1·5	582 0 10	3 6·48
(14) Finance	243 7 11	1 9·55	240 15 11	1 5·57
	<u>£7,963 17 7</u>		<u>£8,998 7 9</u>	
Average cost of each In-Patient per week		2 18 9·05		2 14 8·9
Average cost of each In-Patient (calculated upon number of Patients treated to a conclusion)		75 2 7·42		74 19 8·77

EAST INDIA DOCK DISPENSARY.

Financial Statistics for year ending 31st December, 1923, compared with those of the previous year ending 31st December, 1922.

OUT-PATIENTS.

			Numbers in 1922.	Number in 1923.
(A) NUMBERS—				
(1) Total number of New Out-Patients	270	282
(2) Total number of Out-Patient Attendances	2,008	2,761
(a) Number of Patients on Books at the beginning of the year..
(b) Number of Casualty Patients included in No. 1 above
(c) Number of Casualty Attendances included in No. 2 above

(B) ANNUAL EXPENDITURE on Out-Patients, and Average cost of each Out-Patient Attendance and of each Out-Patient.

The following figures do not include any charge for Rent, Rates and Taxes:—

	Expenditure on Out-Patients in 1922.		Average cost per Out-Patient Attendance.		Expenditure on Out-Patients in 1923.		Average cost per Out-Patient Attendance.	
	£	s. d.	£	s. d.	£	s. d.	£	s. d.
MAINTENANCE—								
(3) Provisions, including board
(4) Surgery and Dispensary	..	20 7 0	..	1 87	19 10 0	..	1 69	..
(5) Domestic	..	7 16 0	..	72	7 16 0	..	63	..
(6) Establishment
(7) Salaries and Wages	..	115 3 0	..	10 60	115 3 0	..	10 01	..
(8) Miscellaneous	2 6	..	01	..
ADMINISTRATION—								
(9) Management	..	8 0 0	..	73	8 0 0	..	69	..
(10) Finance	..	3 0 0	..	27	3 0 0	..	26	..
		<u>£154 6 0</u>			<u>153 11 6</u>			
Average total cost per Out-Patient Attendance	..		1	2 19			1	1 34
Average cost per Out-Patient (calculated upon number of Patients treated)	..		11	5 15			10	10 70

THE ANGAS CONVALESCENT HOME, Cudham, Kent.

Opened 8th July, 1918.

Financial Statistics for the period ending 31st December, 1923, compared with those of the previous year ending 31st December, 1922.

I.—IN-PATIENTS.

(A) NUMBER OF BEDS AND IN-PATIENTS.

	Numbers in 1922.	Numbers in 1923.
(1) Number of Beds available for use.. .. .	28	28
(2) Average number of Patients resident daily throughout the year, as counted and recorded daily	20.9	22.86
(3) Number of In-Patients at beginning of year	9	20
(4) " " " admitted during the year	344	400
(5) " " " in the Home at the end of the year	20	27
(6) Average number of days each Patient was resident	22.1	20.8

Ascertained by multiplying the average number of Patients resident daily throughout the year by 365 and dividing the result by the number of Patients admitted during the year.

(B) ANNUAL EXPENDITURE. *Average cost of each In-Patient per week, and average cost of each In-Patient.*

The following figures do not include any charge for Rent, Rates and Taxes.

	Expenditure on In-Patients in 1922.	Average cost of each In-Patient per week in 1922.	Expenditure on In-Patients in 1923.	Average cost of each In-Patient per week in 1923.
MAINTENANCE.	£ s. d.	s. d.	£ s. d.	s. d.
(7) Provisions	684 13 10	12 6.78	712 9 3	11 11.45
(8) Surgery and Dispensary	10 9 9	2.31	16 15 1	3.37
(9) Domestic	625 17 7	11 5.84	576 1 10	9 8
(10) Establishment	280 9 7	5 1.77	255 18 8	4 3.53
(11) Salaries, Wages, &c.	365 13 2	6 8.53	406 9 0	6 9.84
(12) Miscellaneous Expenses	66 10 4	1 2.65	48 13 4	9.79

ADMINISTRATION.

(13) Management	120 0 0	2 2.42	120 18 7	2 0.35
(14) Finance	3 5 6	.72	1 0 0	.20
	<u>£2,156 19 9</u>		<u>£2,138 5 9</u>	

Average cost of each In-Patient per week 1 19 7.02 1 15 10.53

Average cost of each In-Patient (calculated upon number of Patients treated to a conclusion) 6 9 6.53 5 8 9.54

STANDARD ACCOUNT

INCOME AND EXPENDITURE ACCOUNT

INCOME

1. Interest on bonds and notes
2. Dividends on stocks
3. Rents from real estate
4. Profits from business
5. Other income

Total income for the year
Less: Expenses for the year
Net income for the year

Expenses for the year
1. Salaries and wages
2. Rent of premises
3. Fuel and light
4. Repairs and maintenance
5. Other expenses

Total expenses for the year
Net income for the year
Balance forward

Balance forward
Add: Net income for the year
Total balance

Total balance
Less: Balance forward
Net income for the year

Seamen's Hospital

INCOME AND EXPENDITURE ACCOUNT,

INCOME.

A. ORDINARY—		£	s.	d.	£	s.	d.
i.	Annual Subscriptions (see page 196).....				8,323	9	6
ii.	Donations (see page 196)	13,168	2	3			
	Boxes (see page 210)	341	6	0			
					13,509	8	3
iii.	King Edward's Hospital Fund for London (including the Angus Convalescent Home at Cudham).....				3,550	0	0
iv.	Hospital Sunday Fund.....				1,470	0	0
v.	Hospital Saturday Fund.....				876	0	0
vi.	Congregational Collections (apart from Hospital Sunday Fund)				28	4	10
vii.	Workmen's Collections (apart from Hospital Saturday Fund)				661	3	6
viii.	Entertainments				534	6	0
ix.	Invested Property.						
	Dividends—						
	Endowments (see A page 68).....	£9,670	5	0			
	General Purposes (see B page 60)	2,131	13	11			
					11,801	18	11
	Rents (see page 66)	2,600	0	7			
	Income Tax Returnable.....	703	5	9			
	Interest	200	2	10			
	Interest on Deposit Account	45	10	11			
					15,350	19	0
x.	Nursing Institution.						
	Private Nurses				<i>Nil</i>		
	Nurses' and Probationers' Fees				<i>Nil</i>		
xi.	Receipts on Account of Services to Patients—						
	(a) From In-Patients	6,326	15	8			
	(b) „ Out-Patients	<i>Nil</i>					
	(c) „ Public Authorities	18,767	13	11			
	(d) „ Approved Societies	2,307	4	11			
	(e) „ Other Sources	476	13	11			
					27,878	8	5
xii.	Other Receipts.						
	Value of Gifts in kind	39	10	6			
	Miscellaneous	244	3	2			
	Proceeds of Pig and Poultry Account.....	144	14	11			
					428	8	7
	Total Ordinary Income				72,610	8	1
B. EXTRAORDINARY—							
i.	Legacies (see page 66)	10,629	15	11			
ii.	Hospitals of London Combined Appeal, per King Edward's Hospital Fund.....	£7,415	0	0			
	Less paid on Account in 1922.....	5,205	0	0			
					2,210	0	0
					12,839	15	11
	Total Income				£85,450	4	0

for the Year ending December 31st, 1923.

EXPENDITURE.

A. MAINTENANCE.—		£	s.	d.	£	s.	d.
i. Provisions	(see A i., page 62)	14,247	6	7			
ii. Surgery and Dispensary	(see A ii., page 62)	4,954	15	0			
iii. Domestic	(see A iii., page 62)	9,108	19	6			
iv. Establishment	(see A iv., page 63)	2,450	8	10			
v. Salaries and Wages	(see A v., page 63)	24,856	13	8			
vi. Miscellaneous	(see A vi., page 63)	1,128	15	6			
Total Cost of Maintenance					56,746	19	1

B. ADMINISTRATION—

i. Management	(see B i., page 64)	3,974	7	0			
ii. Finance	(see B ii., page 64)	1,897	5	6			
Total Cost of Administration					5,871	12	6
Total Cost of Maintenance and Administration					62,618	11	7

C. RENTS, RATES, AND TAXES—

i. Rents	(see C i., page 64)	85	12	3			
ii. Rates and Taxes	(see C ii., page 64)	1,052	12	4			
Total Rents, Rates and Taxes					1,138	4	7
Total Ordinary Expenditure					63,756	16	2

D. EXTRAORDINARY EXPENDITURE—

i. Contributions to other Institutions	£	s.	d.				
(see page 64)	2	2	0				
The Angas Convalescent Home	222	0	0				
				224	2	0	
ii. Hospitals of London Combined Appeal, King Edward's Hospital Fund.							
(Transferred to Angas Convalescent Home)	30	7	6				
					254	9	6
Total Expenditure					64,011	5	8
Balance, being excess of Total Income over Total Expenditure for the year					21,438	18	4

Examined and found correct,

PRICE, WATERHOUSE & CO.,

CHARTERED ACCOUNTANTS,

£85,450 4 0

10th March, 1924.

3, Frederick's Place, Old Jewry, E.C.2.

Seamen's Hospital

BALANCE SHEET

LIABILITIES.

1. To SUNDRY CREDITORS—	£	s.	d.	£	s.	d.	£	s.	d.
Expense Accounts				5,045	19	1			
Receipts in suspense for ultimate									
School Bed Endowments				47	16	10			
Sundry Receipts in suspense				132	18	5			
The Augas Convalescent Home				53	10	1			
The London School of Clinical									
Medicine				827	6	8			
							6,107	11	1
2. To LOANS TO HOSPITAL—									Nil
3. To CAPITAL ACCOUNTS—									
(A) For Special Purposes—									
(a) Hospital Endowments, as per									
last Balance Sheet ..	£188,179	5	11						
Add Endowments for 1923—									
Seamen's Hosp. Aid Com-				1,000	0	0			
mittee, No. 2 Bed				300	0	0			
Ditto, No. 3 Bed				1,000	0	0			
Douglas Cow Bed				1,800	0	0			
Moorsom Trust Beds (2) ..				62	1	5			
Shanghai Bed				15	0	5			
Ceylon Bed									
Shanghai Silver Thimble				15	15	10			
Fund Bed									
Accretion of Capital upon				1,751	9	0			
Transfer of Stocks ..							194,123	12	7
(b) Other Special Purposes—									
Samaritan Fund as per last				1,887	6	9			
Balance Sheet									
Added ..				3	3				
							1,887	10	0
Duncan Prize Fund as per									
last Balance Sheet ..				100	0	0			
							1,987	10	0
(B) For Buildings and Equipment—									
(a) Nurses' Home Fund, as				500	0	0			
per last Balance Sheet ..				26	12	2			
Add 1 year's dividends ..							526	12	2
(b) Hospital for Tropical									
Diseases, as per last									
Balance Sheet	73,206	15	7						
Transferred from In-									
come and Expendi-				689	4	10			
ture Account as below ..							73,896	0	5
(c) King George's Sana-									
torium for Sailors, as				69,720	1	8			
per last Balance Sheet ..									
Add amount transferred									
from Income and Ex-									
penditure for X-Ray				314	0	0			
Apparatus							70,034	1	8
							144,456	14	3

Carried forward £340,567 16 10 6,107 11 1

as at 31st December, 1923.

ASSETS.

1. By CASH AT BANK AND IN HAND— £ s. d. £ s. d. £ s. d.

(A) Generally on Account of Hospital—

Cash at Bank—

On Deposit	2,000	0	0
Current Account	5,996	7	2
Imprest Account	62	12	3

8,058 19 5

(B) On Account of Special Funds—

King George's Sanatorium

(Capital Account) 3,167 2 4

School Bed Endowment 47 16 10

Samaritan Fund 591 | 9 | 11 |

Patients' Money Account 263 15 7

"Duncan" Prize Fund 29 4 0

Sundry Receipts in Suspense 132 18 5

Angus Convalescent Home .. 53 10 1

London School of Clinical

Medicine 827 6 8

5,113 3 10

13,172 3 3

2. By SUNDRY DEBTORS—

(1) Rents	469	17	5
(2) Unexpired Insurance and Rates	58	12	2
(3) Receipts on Account of Services to Patients....	2,934	9	2
(4) Sundry Debtors and Debit Balances	3,303	19	4
(5) London School of Tropical Medicine	2,824	17	10
			<hr/>
			9,591 15 11

3. By INVESTMENTS ON CAPITAL ACCOUNTS—

At Value when acquired.

(A) For Special Purposes—

(a) Hospital Endowments.....£194,123 8 9

(see page 68)

Add Capital Fund uninvested 3 10

194,123 12 7

(b) Other Special Purposes—

Samaritan Fund (see page 67) £1,887 10 0

Duncan Prize Fund (see page 67) £100 0 0

1,987 10 0

(B) For Buildings and Equipment—

Nurses' Home Fund (see page 68) 500 0 0

Capital Fund uninvested 26 12 2

526 12 2

Carried forward £196,637 14 9 22,763 19 2

Seamen's Hospital

BALANCE SHEET—*contd.*

LIABILITIES.

	£	s.	d.	£	s.	d.
Brought forward.....	340,567	16	10	6,107	11	1
(C) For General Purposes—						
As per last Balance Sheet ..	98,155	2	0			
Add Proceeds of Sale of Albert Dock Property.....	6,000	0	0			
Add accretion of Capital upon Transfer of Investments..	1,191	19	6			
Added from Income and Expenditure Account, as below	11,968	8	0			
				117,315	9	6
				457,883	6	4
4. To UNEXPENDED TREAS. BALANCES OF SPECIAL FUNDS—						
Samaritan Fund.....	591	9	11			
Duncan Prize Fund	29	4	0			
Patients' Money Account	263	15	7			
				884	9	6
5. To INCOME AND EXPENDITURE ACCOUNT—						
Balance at 1st January, 1923.....	9,327	8	3			
Add Excess of Total Income over Total Expenditure for the year to 31st December, 1923	21,438	18	4			
				30,766	6	7
Less transferred to Capital Account						
General Purposes (as above)	11,968	8	0			
Transferred to Hospital for Tropical Diseases (as above)	689	4	10			
				12,657	12	10
Transferred to King George's Sanatorium for Sailors (as above).....	314	0	0			
				12,971	12	10
				17,794	13	9
(These Accounts do not include—						
(1.) The Funds held in connection with the London School of Tropical Medicine, for which a separate Balance Sheet is issued.						
(2.) The sum received in response to the Rt. Hon. Viscount Devonport's Special Appeal.)				£482,670	0	8

ASSETS.

	£	s.	d.	£	s.	d.
Brought forward	196,637	14	9	22,763	19	2
(c) For General Purposes—						
Government and other Stocks ..	72,087	15	11			
(see page 69)						
(Market Value, £67,798 4s. 9d.)						
Add Capital Fund uninvested ..		11	1			
	72,088	7	0			
Properties (see page 69)	45,227	2	6			
				117,315	9	6
					313,953	4 3
4. By LANDS, BUILDINGS AND EQUIPMENT—						
The cost of the Buildings of the Branch Hospital, Royal Albert Docks, and the appliances of the Dreadnought Hospital, the Albert Dock Hospital, and the Dispensary prior to the 1st January, 1907, are not included in this Balance Sheet.						
(A) Dreadnought Hospital—						
As per last Balance Sheet	4,517	3	8			
Added since	925	0	6			
	5,442	4	2			
Less Depreciation on Cars, 20% p.a.	252	6	8			
				5,189	17	6
(B) Hospital for Tropical Diseases and London School of Tropical Medicine—						
Total Expenditure as last Balance Sheet.....	103,206	15	7			
Added since—Hospital for Tropical Diseases	595	19	6			
	103,802	15	1			
Less Contribution from Lord Milner's Fund towards expenditure on London School of Tropical Medicine ..	28,274	1	11			
Less amount received from War Office re dilapidations.....	1,632	12	9			
	29,906	14	8			
				73,896	0	5
(C) King George's Sanatorium for Sailors*—						
Expenditure as per last Balance Sheet	64,219	16	5			
Added since	2,647	2	11			
				66,866	19	4
(*There is a charge of £13,212 outstanding in favour of the Ministry of Health on this asset in respect of a contingent grant made by the Ministry in 1921).					145,952	17 3
					£482,670	0 8

Examined and found correct,

PRICE, WATERHOUSE & CO.,

CHARTERED ACCOUNTANTS,

10th March, 1924.

3, Frederick's Place, Old Jewry, E.C.2.

EXPENDITURE—ABSTRACT "A" (MAINTENANCE) 1923.

	DREAD- NOUGHT HOSPITAL.	ALBERT DOCK HOSPITAL.	HOSPITAL TROPICAL DISEASES.	KING GEORGE'S SANATORIUM FOR SAILORS.	EAST INDIA DOCK DISPENSARY	TOTAL.
	1923. £ s. d.	1923. £ s. d.	1923. £ s. d.	1923. £ s. d.	1923. £ s. d.	1923. £ s. d.
A i.—Provisions.						
Meat	1,574 1 6	315 5 9	534 16 5	942 19 7	3,367 3 2
Fish, Poultry, &c.	818 10 0	114 3 6	351 8 8	308 15 6	1,592 17 8
Butter, Bacon, &c.	740 7 7	139 18 7	203 10 1	284 3 4	1,367 19 7
Eggs	405 8 5	40 3 7	159 2 10	141 18 7	746 13 5
Milk	1,461 8 8	373 7 7	502 15 7	658 7 6	2,995 19 4
Bread, Flour, &c.	585 10 5	96 3 7	181 19 7	153 3 5	1,016 17 0
Grocery	1,097 8 7	248 12 1	232 6 9	402 11 11	1,980 19 4
Vegetables, Fruit, &c.	356 7 8	84 16 1	160 6 8	329 18 5	981 8 10
Malt Liquors	52 10 3	29 19 9	2 3 0	9 19 11	94 12 11
Aerated Water, Ice, &c.	90 9 4	5 2 0	41 9 1	15 14 11	152 15 4
A ii.—						
Surgery & Dispensary.	7,182 2 4	1,447 12 6	2,369 18 8	5,247 13 1	14,247 6 7
Drugs, Chemicals, Disinfectants, &c.	1,642 19 6	763 13 2	212 11 8	76 5 5	13 6 9	2,708 16 6
Dressings, Bandages, &c.	298 12 2	318 12 1	39 10 1	57 9 11	4 11 7	718 15 10
Instruments and Appliances ..	363 16 7	130 17 5	155 8 8	97 4 10	747 7 6
Wines and Spirits	132 6 9	20 16 0	4 12 0	12 9 0	170 3 9
Sundries	91 15 6	35 5 6	25 0 9	5 18 0	1 11 8	159 11 5
Pathology	450 0 0	450 0 0
	2,979 10 6	1,269 4 2	437 3 2	249 7 2	19 10 0	4,954 15 0
A iii.—Domestic.						
Renewal and Repair of—						
Furniture	402 10 5	83 14 9	46 15 11	125 7 8	658 8 9
Bedding and Linen	599 7 1	120 7 7	50 5 5	183 2 11	953 3 0
Hardware, Crockery, Brushes, &c.	154 11 2	57 9 6	31 4 9	134 3 10	377 9 3
Washing done off Hospital premises	1 2 6	471 16 6	6 5	473 5 5
Average weekly number of Articles	(565)
Cleaning and Chandlery ..	347 10 0	118 3 3	23 15 1	93 15 9	7 16 0	591 0 1
Water	119 13 7	93 0 4	55 4 3	267 18 2
Fuel and Lighting—						
(a) Coal	1,310 19 10	581 14 8	400 4 4	475 12 8	2,768 11 6
(b) Gas	684 0 0	166 15 10	221 1 8	1,071 17 6
(c) Electric Current	598 5 5	124 16 1	190 0 9	22 3 8	935 5 11
(d) Oil, Wood, &c.	21 13 0	6 5 10	5 1 5	46 2 11	79 3 2
Uniforms (Nurses and Porters)	305 13 7	118 0 3	57 11 10	67 18 11	549 4 7
Sundries	125 4 1	34 6 8	27 1 1	197 0 4	383 12 2
	4,670 10 8	1,504 14 9	1,580 3 0	1,345 15 1	7 16 0	9,108 19 6

EXPENDITURE—ABSTRACT "A" (MAINTENANCE) 1923—continued.

	DREAD- NOUGHT HOSPITAL.	ALBERT DOCK HOSPITAL.	HOSPITAL TROPICAL DISEASES.	KING GEORGE'S SANATORIUM FOR SAILORS.	EAST INDIA DOCK DISPENSARY.	TOTAL.
	1923. £ s. d.	1923. £ s. d.	1923. £ s. d.	1923. £ s. d.	1923. £ s. d.	1923. £ s. d.
A iv.—Establishment.						
Insurance	105 4 0	37 5 6	106 10 0	36 9 3	52 3 0	285 8 9
Renewals and Repairs	1,097 8 5	146 3 2	402 19 4	308 19 10	1,955 10 9
Annual Cleaning
Garden	54 15 4	3 7 8	151 6 4	209 9 4
	<u>1,257 7 9</u>	<u>186 16 4</u>	<u>509 9 4</u>	<u>496 15 5</u>	<u>.....</u>	<u>2,450 8 10</u>
A v.—Salaries & Wages.						
Medical	2,920 1 5	1,363 16 10	527 3 3	817 15 1	63 0 0	5,691 16 7
Dispensing	407 0 2	218 12 1	168 12 11	52 3 0	846 8 2
Nursing	3,476 17 11	1,130 15 11	1,145 6 3	689 0 0	6,442 0 1
Other Officers	1,385 0 10	144 17 2	200 2 1	175 10 4	1,738 16 11
Mechanics, &c.—						
Renewals and Repairs	1,151 4 8	24 13 1	178 14 5	151 8 7	1,514 15 2
Other	391 15 8	345 16 5	182 18 7	117 0 0	1,028 16 3
Porters	2,198 15 7	192 6 1	442 12 2	137 16 8	2,971 10 6
Domestic Servants	519 17 2	199 11 9	249 19 4	267 0 10	1,234 3 6
Scrubbers	1,919 14 5	451 11 3	222 12 11	240 14 3	3,001 6 4
Pensions	315 10 1	69 4 6	337 0 2
	<u>14,685 17 11</u>	<u>4,141 5 1</u>	<u>3,318 1 11</u>	<u>2,596 5 9</u>	<u>115 3 0</u>	<u>24,856 13 8</u>
A vi.—Miscellaneous.						
Printing and Stationery	277 13 0	46 9 8	88 2 5	40 17 8	2 6	453 5 3
Postages	166 14 11	58 8 8	27 10 8	28 0 4	280 14 7
Advertisements
Sundries	183 9 2	22 18 5	17 11 7	170 16 6	394 15 8
	<u>627 17 1</u>	<u>127 16 9</u>	<u>133 4 8</u>	<u>239 14 6</u>	<u>2 6</u>	<u>1,138 15 6</u>

EXPENDITURE—ABSTRACT B (ADMINISTRATION), 1923.

B i.—
Management.

	DREAD- NOTIGHT HOSPITAL.	ALBERT DOCK HOSPITAL.	HOSPITAL TROPICAL DISEASES	KING GEORGE'S SANATORIUM FOR SAILORS.	EAST INDIA DOCK DISPENSARY	TOTAL
	1923. £ s. d.	1923. £ s. d.	1923. £ s. d.	1923. £ s. d.	1923. £ s. d.	1923. £ s. d.
Official Salaries	1,717 13 4	343 10 9	397 12 5	420 13 7	8 0 0	2,887 10 1
Pensions	372 14 9	75 1 7	82 17 8	82 19 8	613 13 8
Official Printing and Stationery	178 4 5	35 12 11	43 11 3	50 3 6	307 12 1
Official Postages & Telegrams	10 5 6	2 1 2	2 1 2	2 1 2	16 9 0
Official Advertisements	22 10 0	4 10 0	7 2 6	5 11 0	59 13 6
Law Charges
Auditors' Fees	61 15 5	12 18 3	14 3 1	20 11 11	109 8 8
Sundries	2,363 3 5	473 14 8	547 8 1	582 0 10	8 0 0	3,974 7 0

B ii.—Finance.

Appeals	624 9 0	124 17 10	124 17 10	128 14 9	3 0 0	1,005 19 5
Commission	415 16 4	83 15 3	83 15 3	83 15 3	670 2 1
Festivals, Bazaars, &c.	137 15 9	27 11 2	27 11 2	28 5 11	221 4 0
	1,181 1 1	236 4 3	236 4 3	240 15 11	3 0 0	1,897 5 6

ABSTRACT C (RENTS, RATES & TAXES).

C i.—Rents.

Rents	1 0	4 0	12 0 0	13 7 3	00 0 0	35 12 3
---------------	-----	-----	--------	--------	--------	---------

C ii.—

Rates & Taxes.

Rates and Taxes	446 18 0	111 4 7	327 10 6	166 19 3	1,052 12 4
-------------------------	----------	---------	----------	----------	-------	------------

ABSTRACT D (EXTRAORDINARY EXPENDITURE).

D i.—Contributions to other Instit'tns ..

Angas Convalescent Home	2 2 0	2 2 0
---------------------------------	-------	-------	-------	-------	-------	-------

D ii.—Hospitals of London. Combined
Appeal, King Edward's Hospital
Fund

	30 7 6	30 7 6
	£254 9 6	254 9 6

SUMMARY OF THE FOREGOING ABSTRACTS.

A.—MAINTENANCE.

- i. Provisions ...
- ii. Surgery and Dispensary ...
- iii. Domestic ...
- iv. Establishment ...
- v. Salaries and Wages ...
- vi. Miscellaneous ...

Total cost of Maintenance ...

B.—ADMINISTRATION.

- i. Management ...
 - ii. Finance ...
- Total cost of Maintenance and Administration

C.—RENTS, RATES & TAXES.

- i. Rents ...
- ii. Rates and Taxes ...

Total Ordinary Expenditure ...

D.—EXTRAORDINARY EXPENDITURE.

- i. Contributions to other Institutions
- ii. Hospitals of London Combined Appeal King Edward's Hospital Fund ...

Total Expenditure.....

	1923. DREADNOUGHT HOSPITAL.			1923. ALBERT DOCK HOSPITAL.			1923. HOSPITAL TROPICAL DISEASES.			1923. KING GEORGE'S SANATORIUM FOR SAILORS.			1923. EAST INDIA DOCK DISPENSARY.			TOTAL.		
	£	s.	d.	£	s.	d.	£	s.	d.	£	s.	d.	£	s.	d.	£	s.	d.
i. Provisions ...	7182	2	4	1447	12	6	2369	18	8	3247	13	1	14247	6	7
ii. Surgery and Dispensary ...	2979	10	6	1269	4	2	437	3	2	249	7	2	19	10	0	4954	15	0
iii. Domestic ...	4670	10	8	1504	14	9	1580	3	0	1345	15	1	7	16	0	9108	19	6
iv. Establishment ...	1257	7	9	186	16	4	509	9	4	496	15	5	2450	8	0
v. Salaries and Wages ...	14685	17	11	4141	5	1	3318	1	11	2596	5	9	115	3	0	24856	13	8
vi. Miscellaneous ...	627	17	1	127	16	9	133	4	8	239	14	6	1128	15	6
Total cost of Maintenance ...	31403	6	3	8677	9	7	8348	0	9	8175	11	0	142	11	6	56746	19	1
B.—ADMINISTRATION.																		
i. Management ...	2363	3	5	473	14	8	547	8	1	582	0	10	8	0	0	3974	7	0
ii. Finance ...	1181	1	1	236	4	3	236	4	3	240	15	11	3	0	0	1897	5	6
Total cost of Maintenance and Administration	34947	10	9	9387	8	6	9131	13	1	8998	7	9	153	11	6	62618	11	7
C.—RENTS, RATES & TAXES.																		
i. Rents ...	1	0	0	4	0	0	12	0	0	13	7	3	60	0	0	85	12	3
ii. Rates and Taxes ...	446	18	0	111	4	7	327	10	6	166	19	3	1052	12	4
Total Ordinary Expenditure ...	35394	9	9	9498	17	1	9471	3	7	9178	14	3	213	11	6	63756	16	2
D.—EXTRAORDINARY EXPENDITURE.																		
i. Contributions to other Institutions	224	2	0	224	2	0
ii. Hospitals of London Combined Appeal King Edward's Hospital Fund ...	30	7	6	30	7	6
Total Expenditure.....	35648	19	3	9498	17	1	9471	13	7	9178	14	3	213	11	6	64011	5	8

SCHEDULE OF INVESTMENTS, 31st DECEMBER, 1923.

A. FOR SPECIAL PURPOSES.

				Income rec'd in 1923.		Value when acquired.	
				£ s. d.	£ s. d.	£ s. d.	£ s. d.
(a)—Samaritan Fund.							
62 10 3	5% War Stock	J. H. Luscombe Memorial Fund		3 2 6		73 17 5	
54 3 1	Do.	Walter Adams Memorial Fund		2 14 2		64 1 0	
694 0 0	{ 4% L.N.E. Rly. 1st Pref. Stock	George Sturge Fund		27 11 10		744 11 7	
1,084 13 11	5% War Stock	Guthrie Rankin Fund		54 4 8		1,000 0 0	
				<u>£87 13 2</u>		<u>£1,887 10 0</u>	
(b)—Duncan Prize Fund.							
102 13 0	New Zealand 4% Stock, 1943	{ "Duncan Medal" for Albert Dock Hospital Nurse }		<u>£4 2 0</u>		<u>£100 0 0</u>	
(c)—Endowments.							
627 19 3	5% War Stock	American Victoria Jubilee Fund		31 8 0		792 19 11	
808 18 8	Do.	Argonaut Bed		40 9 0		1,000 0 0	
350 17 6	Do.	William Hollins Fund		17 10 10		443 2 0	
70 3 6	Do.	James David Dimsdale's Fund		3 10 2		88 12 6	
68 18 2	Do.	Ann du Bois Memorial Fund ..		3 8 10		82 16 6	
216 16 0	Met. Water Board 3% Stock	The "Bertha" Fund		6 10 2		200 0 0	
1,134 15 0	3% New South Wales Stock	Harriet Ann McIlwraith Fund...		34 0 10		1,000 0 0	
3,625 7 7	India 3% Stock	Annie Zunc Fund		108 15 0		3,000 0 0	
1,048 9 10	India 3½% Stock	George Busk Memorial Fund ..		36 14 0		1,000 0 0	
1,041 13 4	Do.	Law Memorial Fund		36 9 0		1,000 0 0	
2,099 0 0	South Australian 4% Stock, 1940/1960	Tropical Beds		83 19 2		2,065 1 6	
2,000 0 0	East Surrey Water Co., 4% Consolidated Debenture Stk. Do.			80 0 0		1,959 15 6	
2,000 0 0	Madras & Southern Mahratta 4% Debenture Stock Do.			80 0 0		1,975 3 0	
1,045 0 0	{ 4% L.N.E. Railway, 2nd Guaranteed Stock	Stidolph Trust		41 16 0		1,000 0 0	
999 9 0	Victoria 4½% Stock	S. A. Oxtoby Bed		44 19 6		1,000 0 0	
430 19 1	5% War Stock 1929-1947	Gerald Leather Trust		21 11 0		400 0 0	
100 0 0	{ 5½% Registered Exchequer Bonds, 1925	C. W. Simson Trust		5 15 0		100 0 0	
2,111 7 10	5% War Stock	Hong Kong Beds		105 11 4		2,000 0 0	
529 1 0	Do.	Silvertown Fund		26 9 0		500 0 0	
1,056 1 1	Do.	Burmah Fund		52 16 0		1,000 0 0	
1,065 16 7	Do.	Jacob's Trust		53 5 10		1,000 0 0	
50 0 0	Do.	Calendar Volunteer Squad Fund		2 10 0		47 10 0	
68 0 0	Pecol. Oil Combine Shares						
100 0 0	2½% Consols	Maurice Fredk. Arnold Mem. Fd.		2 10 0		54 10 0	
518 0 5	5% War Stock, 1929-47	The "Bury" Fund		25 18 0		483 4 2	
1,056 15 2	Do.	The "Cherry Blossom" Bed ..		52 16 10		1,000 0 0	
1,899 19 10	Do.	The "Elizabeth Tupper" Trust		95 0 0		1,800 0 0	
1,051 1 11	Do.	The "Perthshire" Bed		52 11 2		1,000 0 0	
1,061 13 0	Do.	The "Hamilton-Canada" Bed		53 1 8		1,000 0 0	
1,136 13 4	Do.	{ The "British-American War Relief Fund of Philadelphia" Bed		56 16 8		1,070 13 3	
10,623 12 2	Do.	The "Silver Thimble" Fund ..		531 3 8		10,000 0 0	
19,632 1 5	Do.	{ The British Red Cross and Order of St. John Endowment Fund		1,682 16 6		18,528 2 9	
20,000 0 0	{ L.M. & S. Rly. 4% Deb. Stock	Do.	Do.			17,154 11 0	
13,988 4 0	3½% Conversion Stock	Do.	Do.	244 15 10		11,068 15 3	
12,745 13 3	4% Funding Loan	{ The "Mesopotamia" Fund (The Stanley-Maud Ward) }		509 16 6		10,169 6 4	
1,056 15 2	5% War Stock	{ The Ladies Emergency Committee of the Navy League Bed		52 16 10		1,000 0 0	
1,097 7 1	Do.	The Gulliver Bed		54 17 4		1,045 6 3	
135 0 0	5% National War Bonds	The National Sunday League		6 15 0		135 0 0	
1,084 13 11	5% War Stock	The "T. W. Smyth" Bed ..		54 4 8		1,000 0 0	
1,040 11 10	5% War Stock, 1929-47	The "Reynolds" Bed		54 10 8		1,000 0 0	

Carried forward £4,448 0 0 £99,164 9 11

(c)—Endowments—continued.

(c)—Endowments—continued.

£ s. d.					Income rec'd in 1933.	Value when acquired.
					£ s. d.	£ s. d.
			<i>Brought forward</i>		4,448 0 0	99,164 9 11
1,085 15 11	5%	War Stock, 1929-47	{	Seamen's Hospital "Aid" Committee Fund	54 5 10	1,000 0 0
113 11 0	5%	Do. Do.	{	"Lacey Bed" Fund	5 13 6	100 0 0
1,194 16 5	5%	Do. Do.	{	The "Morris" Fund	59 14 10	1,000 0 0
1,168 12 9	5%	Do. Do.	{	The "Morris" Fund	58 8 8	1,000 0 0
1,168 12 9	5%	Do. Do.	{	The "Alec Hammond" Bed	58 8 8	1,000 0 0
1,212 0 0	5%	Corporation of London Stock, 1945-65	{	Members of Lloyds, The Marine Insurance Companies & Shipowners' Trust	60 12 0	1,000 0 0
1,630 0 0	3½%	Conversion Stock, 1961	{	"Mine Sweepers Fund"	57 1 0	1,000 0 0
300 0 0		Ordinary Stock of G.W. Rly. Co.	{	"Major Rowden"	24 15 0	192 10 0
1,133 0 2	5%	War Stock, 1929-47	{	"The Sheerness Bed"	56 13 0	1,000 0 0
202 4 8		Ceylon 6% Stock, 1936-51	{	"The Fox-Batley Bequest"	12 2 8	200 0 0
1,169 10 8	5%	War Stock, 1929-47	{	The "Angas Ward," King George's Sanatorium for Sailors	58 9 6	1,000 0 0
1,169 10 8	Do.	Do.	{	The "Morris Fund," King George's Sanatorium for Sailors	58 9 6	1,000 0 0
1,062 5 9		Sheffield Corporation, 5½% Redeemable Debenture Stock, 1941-51	{	"Duke of York" Ward (Sanatorium)	58 8 6	1,000 0 0
997 8 0		New Zealand 6% Inscribed Stock, 1936-51	{	"Duke of Connaught" Ward (Sanatorium)	59 16 10	1,000 0 0
10,100 0 0		Ceylon 6% Inscribed Stock	Rt. Hon. Lord Inchcape Fund	606 0 0	9,977 10 0	
11,113 8 0	5%	War Stock, 1929-47	Ditto	ditto	555 13 4	10,026 19 11
10,350 0 0		Union of S. Africa, 6% Stock, 1930-40	Ditto	ditto	621 0 0	10,004 8 9
10,500 0 0		Glasgow Corporation 5½%, 1935-53	Ditto	ditto	577 10 0	10,005 0 0
14,250 0 0		L. M. & S. Rly. 4% Deb. Stock	Ditto	ditto	570 0 0	9,991 10 6
14,400 0 0		Southern Rly. 4% Deb. Stock	Ditto	ditto	562 11 10	9,994 10 10
11,363 1 5		London County 5% Stock	Ditto	ditto	568 3 0	10,000 0 0
2,103 0 10		India 3% Stock	The "Shanghai" Bed	71 16 8	1,104 7 8	
1,004 6 9	5%	War Stock 1929-47	"Angas" Bed	50 4 4	1,000 0 0	
997 8 11	5%	Do. Do.	"McEacharn" Bed	49 17 6	1,000 0 0	
996 15 5	5%	Do. Do.	"Orford Walker" Bed	49 16 10	1,000 0 0	
1,004 6 9	5%	Do. Do.	"Swedish" Bed	50 4 4	1,000 0 0	
1,004 6 9	5%	Do. Do.	"Lambert" Bed	50 4 4	1,000 0 0	
1,004 6 9	5%	Do. Do.	"Barnes" Bed	50 4 4	1,000 0 0	
1,004 6 9	5%	Do. Do.	"Barnes" Bed (Sanatorium)	50 4 4	1,000 0 0	
615 13 9	5%	Do. Do.	"Ceylon" Bed	615 6 8		
647 6 0	5%	Do. Do.	"Shanghai Silver Thimble" Fund	646 18 4		
301 11 10		New S. Wales 5% Stk., 1932-42	{	Seamen's Hospital Aid Committee No. 3 Bed	7 10 9	300 0 0
1,167 0 0		L. M. & S. Rly. 4% Pref. Stk.	Douglas Cow Bed	23 6 10	999 16 2	
994 3 7	5%	War Stock, 1929-47	{	Seamen's Hospital Aid Committee No. 2 Bed	24 17 1	1,000 0 0
2,356 10 8	3½%	Conversion Stock	The Moorsom Trust	1,800 0 0		
					<u>£9,670 5 0</u>	<u>£194,123 8 0</u>

B. FOR BUILDINGS AND EQUIPMENT.

Nurses' Home Fund.

532 4 1	5%	War Stock, 1929-47	Add Dividend for 1923	£26 12 2	£500 0 0
---------	----	--------------------	-----------------------	----------	----------

C. FOR GENERAL PURPOSES.

I.—Government and other Securities.

281 5 0		East India Railway Annuity, Class B.	213 0 4	7,312 10 0
1,550 0 0		5% War Stock, 1929-1947	77 10 0	1,472 10 8
6,000 0 0		Cape of Good Hope Consolidated 3½% Stock	160 2 6	5,876 6 0
41 0 0		The Leopoldina Railway Co., Ltd., 4% Debenture Stock	1 4 10	35 15 1
5 0 0		United Railways of the Havana and Regla Warehouses, Ltd., 4½% Western Debenture Stock	3 8	5 7 0

Carried forward £452 1 4 £14,702 8 4

Government and other Securities—continued.

£ s. d.			Income Received in 1923.	Value when acquired.
			£ s. d.	£ s. d.
<i>Brought forward</i>			452 1 4	14,702 8 4
2,323 6 5	{ London County 2½% Stock }	(N. Bevan bequest)	44 13 0	1,452 1 6
2,218 18 4	3½% War Loan, 1925—1928.....		59 4 5	2,000 0 0
*12,695 17 7	5% War Stock, 1929—47		317 7 11	
*806 7 3	Do.		20 3 2	
*8,448 14 3	Do.		211 4 4	
4,000 0 0	5% National War Bonds, 1927		200 0 0	4,000 0 0
5 0 0	5% Do. 1927		5 0	5 0 0
4,000 0 0	3½% New South Wales Inscribed Stock			2,999 10 0
3,200 0 0	4½% London Electric Railway Redeemable 2nd Debenture Stock			3,030 2 0
5 0 0	5% National War Bonds, 1928		3 10	5 0 0
21 0 0	War Saving Certificates, 1923			16 5 6
2,000 0 0	5½% National War Bonds, 1st Sept., 1928		100 0 0	2,000 0 0
50 0 0	Ditto April, 1928		1 18 1	50 0 0
3,600 0 0	5% War Stock (Bearer Bond) 1929—47		139 10 0	3,285 0 0
205 0 0	The Gas Light & Coke Co., 3½% Maximum Stock		5 8 7	112 15 0
224 0 0	The Continental Union Gas Co., (Ordinary Stock)			117 12 0
221 0 0	{ The Eastern Extension Australasia & China }		6 14 0	159 2 5
	{ Telegraph Co. 4½% Mortgage Debenture Stock }			
36	{ £10 Fully-paid Preference Shares of the Globe }		16 11 2	378 0 0
	{ Telegraph & Trust Co., Ltd. }			
237 12 0	New Zealand 4% Consolidated Stock (1929).....		7 7 4	213 16 10
431 11 7	Queensland 3½% Stock (1st July, 1930)		19 7 9	409 6 10
213 3 2	Birmingham 2½% Stock		6 2 8	110 16 11
355 5 3	2½% India Stock		6 15 4	182 19 2
285 13 1	5% Corporation of London Stock, 1945-65, "Goldsmid Fund"		14 5 8	240 0 0
765 16 9	{ 6% Swansea Corporation Redeemable Stock 1945-50 "High- }		45 19 0	720 0 0
	{ bridge House " }			
786 14 7	Commonwealth of Australia 6% Registered Stock, 1931-41 ..		35 19 11	750 9 0
60 0 0	5% War Stock, 1929-47.....		3 0 0	52 16 0
900 0 0	2½% Consols, "Dowson Charity"		22 10 0	522 0 0
250 0 0	Argentine 4% Bonds, 1900 Stock, "Geiselbrecht" Bequest ..		7 12 6	168 2 6
1,255 15 0	3½% Conversion Stock, "Neville Oliver Lupton Fund".....		21 19 6	1,000 0 0
7,164 0 0	London Electric Railway 4% Debenture Stock		109 5 0	6,299 11 10
20,000 0 0	Great Western Railway 4% Debenture Stock		183 0 0	18,105 19 3
6,304 0 0	Metropolitan Water Board (Southwark and Vauxhall 3% Intercommunication Debenture Stock)		73 4 5	4,060 4 10
5,000 0 0	Commonwealth of Australia 5% Registered Stock, 1935/45 ..			4,938 16 0
*Sold July, 1923.				
			£2,131 13 11	£72,087 15 11

II.—Properties.

H.—Properties.						
No. 24, Budge Row, in the City of London (Rack Rent)	623	13	0	12,417	9	10
No. 22, Queen Street, do. (Ground Rent)	173	9	5	8,100	0	0
Nos. 17-22 and 25-27, Edith Street, and 31, Yorkton Street, Hackney (Ground Rents)	54	10	6	200	0	0
21 Houses, Richmond, Surrey	111	16	4	1,370	13	11
18 Do. Priory Avenue, Hornsey (Ground Rents)	94	5	0	3,888	0	0
6 Do. Rosebery Road, Muswell Hill (Ground Rents)	43	1	7	2,141	19	5
63 Do. Blackheath (Ground Rents)	373	7	3	15,513	9	3
Highbridge House, East Greenwich (Rack Rent)	180	8	0	500	0	0
10, Crooms Hill, Greenwich, S.E.10			1,095	5	1
	£1,654	11	1	£45,227	2	6

THE ANGAS CONVALESCENT HOME.

(a)—For Special Purposes.

Endowments.

£ s. d.					Endowments.						
1,064	8	6	5% War Stock, 1929—47		Gordon Bed	53	4	6	1,000	0	0
1,056	15	2	Do.	Do.	Lady Harriet Ann McIlwraith Bed	52	16	10	1,000	0	0
1,055	11	0	Do.	Do.	Navy League Overseas Relief						
					Fund Bed.....	52	15	6	1,000	0	0
105	13	6	Do.	Do.	Oldham Lees Trust.....	5	5	8	100	0	0
1,056	14	11	Do.	Do.	Becker Bed.....	52	16	10	1,000	0	0
1,583	19	11	Do.	Do.	King George's Fund for Sailors	79	4	0	1,500	0	0
					Carried forward.....	£296	3	4	5,600	0	0

Government and other Securities—continued.

£ s. d.				Income Received in 1923.		Value when acquired.	
				£	s. d.	£	s. d.
1,250	0	0	4% Funding Loan	<i>Brought forward</i>		296	3 4
1,056	15	2	5% War Stock, 1929—47	Norman Austin Taylor Bed		50	0 0
				Ladies' Emergency Committee of the Navy League Bed.....		52	16 10
1,049	15	8	Do.	Do.	The "Angas" Bed	52	9 10
1,095	16	4	Do.	Do.	The Sevenoaks Bed	54	15 10
1,095	16	4	Do.	Do.	The Baltic & Lloyd's Ambulance Unit Bed	54	15 10
1,004	6	9	Do.	Do.	" Barnes " Bed	50	4 4
748	16	9	Do.	Do.	" Schools " Bed		750 9 0
				<u>£611 6 0</u>		<u>£12,350 9 0</u>	

General Purposes.

105	10	7	5% War Stock, 1929—47	5	5	6	100	0	0
5,299	10	7	Do. Do.	264	19	6	5000	0	0
250	0	0	Argentine 4% Bonds, 1900 Stock, " Geiselbrecht " Bequest....	7	12	6	168	2	6
				<u>£277 17 6</u>		<u>£5,268 2 6</u>			

STYRON AND THE GREAT DEPRESSION

WASHING, D.C. 20540

THE UNIVERSITY OF MICHIGAN LIBRARY

ANN ARBOR, MICHIGAN 48106-1000

STYRON, JAMES M. 1918-1995

STYRON, JAMES M. 1918-1995

STYRON, JAMES M. 1918-1995

STYRON, JAMES M. 1918-1995

STYRON, JAMES M. 1918-1995

STYRON, JAMES M. 1918-1995

STYRON, JAMES M. 1918-1995

STYRON, JAMES M. 1918-1995

STYRON, JAMES M. 1918-1995

STYRON, JAMES M. 1918-1995

STYRON, JAMES M. 1918-1995

STYRON, JAMES M. 1918-1995

STYRON, JAMES M. 1918-1995

STYRON, JAMES M. 1918-1995

Dreadnought and Albert Dock Hospitals.

WASHING RETURN, for Year ended 31st Dec., 1923.

Average No. of pieces washed weekly	{	Dreadnought Hospital	...	10,213
on Hospital Premises	...	Albert Dock	...	2,044
				<hr/>
				12,257
				<hr/>

EXPENDITURE.	DREADNOUGHT			ALBERT		
	HOSPITAL.			DOCK		
	£	s.	d.	£	s.	d.
Wages of Laundry Hands	999	15	10	200	12	5
Board and Lodging Allowance	Nil			Nil		
Wages and Board, or Proportion thereof, of Workers whose time is wholly or partially given to Laundry, as Engineers, Stokers, &c.	168	5	7	33	5	1
	Nil			Nil		
Materials and Sundries — Soaps, Soda, Brooms, Brushes, Utensils, Overalls, Clogs, Baskets, &c.	120	7	11	24	1	3
Carriage	63	0	0	12	12	0
Fuel, Power and Gas	296	9	7	60	15	1
Water (Annual charge)	8	14	0	1	14	9
Repairs to Laundry Building	91	12	11	18	6	7
Repairs to Machinery and Plant	57	10	10	11	10	2
Insurance (Fire and Boilers)	2	14	0	10	10	
Depreciation—						
Building (1½ % on £2,550)	31	17	6	6	7	6
Machinery and Boilers (7½ % on £450)	28	2	6	5	12	6
Interest on Capital	100	0	0	20	0	0
	<hr/>			<hr/>		
	£1,968	10	8	£395	8	2
	<hr/>			<hr/>		
Cost of Washing for In-patients	£1,820	17	10	£296	11	2
" Out-patients	£147	12	10	£98	17	0

King George's Sanatorium for Sailors.

WASHING RETURN, for Year ended 31st Dec., 1923.

Average No. of pieces washed weekly on Hospital Premises ... 1,755

EXPENDITURE.

	£	s.	d.
Wages of Laundry Hands	229	1	8
Board and Lodging Allowance	Nil		
Wages and Board, or Proportion thereof, of Workers whose time is wholly or partially given to Laundry, as Engineers, Stokers, &c.—			
Wages	117	0	0
Board	Nil		
Material and Sundries—Soaps, Soda, Brooms, Brushes, Utensils, Overalls, Clogs, Baskets, &c.	28	0	8
Fuel, Power and Gas	89	8	3
Water (Annual Charge)	1	0	0
Repairs to Laundry Building	30	0	8
Repairs to Machinery	26	9	7
Insurance (Fire and Boilers)	1	12	7
Depreciation—			
Building ($1\frac{1}{2}$ per cent on £637)	9	11	1
Machinery and Boilers ($7\frac{1}{2}$ per cent of £275)	20	12	6
Interest on Capital	45	0	0
	£597	17	0

Seamen's Hospital

"ANGAS" CONVALESCENT

INCOME AND EXPENDITURE ACCOUNT,

INCOME.

A. ORDINARY—	£	s.	d.	£	s.	d.
i. Annual Subscriptions				121	18	6
ii. Donations	£263	5	6			
Do. King George's Fund for Sailors	1,500	0	0			
				1,763	5	6
Boxes.....				2	2	6
				1,765	8	0
iii. King Edward's Hospital Fund for London (The work of the Angas Convalescent Home is taken into account in the grant to the parent Hospital)						
iv. Hospital Sunday Fund				Nil		
v. Hospital Saturday Fund				Nil		
vi. Congregational Collections..... (apart from Hospital Sunday Fund)				1	13	5
vii. Workmen's Collections				Nil		
(apart from Hospital Saturday Fund)						
viii. Entertainments				111	18	10
ix. Invested Property.						
Dividends—						
Endowments (see page 63)	611	6	0			
General Purposes (see page 62)	277	17	6			
Rents	16	0	0			
				905	3	6
x. Nursing Institution				Nil		
xi. Receipts on account of Services to Patients						
(a) From In-Patients	130	17	11			
(b) " Out-Patients	Nil					
(c) " Public Authorities.....	205	8	1			
(d) " Approved Societies	199	0	4			
(e) " Other sources	Nil					
				535	6	4
xii. Other Receipts.						
Jumble Sale.....	129	10	5			
Proceeds of Pig and Poultry Farm.....	55	11	4			
Miscellaneous	13	18	1			
Seamen's Hospital Society grant.....	222	0	0			
				420	19	10
 Total Ordinary Income, carried forward...				£3,862	8	5

Society.

HOME, CUDHAM, KENT.

for the Year ended 31st December, 1923.

EXPENDITURE.

A. MAINTENANCE—

	£	s.	d.	£	s.	d.	£	s.	d.
I. Provisions.									
Meat	231	6	0						
Fish, Poultry, etc.	35	7	9						
Butter, Bacon, etc.	89	10	9						
Eggs	7	0	1						
Milk	82	8	8						
Bread, Flour, etc.	84	1	0						
Grocery	111	14	10						
Vegetables	67	5	1						
Malt Liquors	19	2							
Aerated Water and Ice	2	15	11						
							712	9	3
II. Surgery and Dispensary.									
Drugs, Chemicals, Disinfectants, etc.	9	18	0						
Dressings, Bandages, etc.	3	11	10						
Instruments and Appliances.	3	3	11						
Wines and Spirits	<i>Nil</i>								
Sundries	1	4					16	15	1
III. Domestic.									
Renewals and Repairs (Furniture)	13	13	3						
" " (Bedding and Linen)....	16	16	3						
" " (Hardware)	36	16	3						
Washing done off Hospital premises.	105	15							
(Average Weekly Number of Articles, 194)									
Cleaning and Chandlery	10	11	8						
Water	21	3	2						
Coal	133	18	4						
Electric Current	12	15	0						
Oil, Wood, etc.	5	15	3						
Uniforms	17	8	1						
Sundries	201	9	0				576	1	10
IV. Establishment.									
Insurance	7	0	0						
Renewals and Repairs	122	16	10						
Garden	126	1	10				255	18	8
V. Salaries, Wages, &c.									
Medical	54	1	6						
Nursing	183	8	5						
Mechanics	32	15	4						
Domestic Servants	72	2	10						
Scrubbers	31	3	10						
Other Officers	32	17	1				406	9	0
VI. Miscellaneous.									
Printing and Stationery	4	15	3						
Postages	32	4	2						
Sundries	11	13	11				48	13	4
Total Cost of Maintenance	2,016	7	2						
<i>Carried forward</i>							£2,016	7	2

"ANGAS" CONVALESCENT INCOME AND EXPENDITURE ACCOUNT,

INCOME.

	£	s.	d.
<i>Brought forward</i>	3,862	8	5
B. EXTRAORDINARY—	£	s.	d.
i. Legacies.....		Nil	
ii. Voluntary Hospitals Commission Grant		Nil	
iii. Hospitals of London Combined Appeal	40	17	6
(per King Edward's Hospital Fund)			
Total Extraordinary Income		40	17 6

£3,903 5 11

HOME, CUDHAM, KENT—*continued.**for the Year ended 31st December, 1923.***EXPENDITURE.**

	£	s.	d.	£	s.	d.	£	s.	d.
<i>Brought forward ..</i>							2,016	7	2
B. ADMINISTRATION.									
Management.									
Official Salaries	120	0	0						
Sundries		0	18	7					
							120	18	7
ii. Finance.									
Printing and Stationery				<i>Nil</i>					
Advertisements	1	0	0						
							1	0	0
Total Cost of Administration							121	18	7
Total Cost of Maintenance & Administration ..							2,138	5	9
C. RENTS, RATES AND TAXES.									
i. Rents				<i>Nil</i>					
ii. Rates and Taxes				65	0	0			
Total Rents, Rates and Taxes							65	0	0
Total Ordinary Expenditure							2,203	5	9
D. EXTRAORDINARY EXPENDITURE.									
i. Interest				<i>Nil</i>					
ii. Contributions to other Institutions				5	5	0			
Total Extraordinary Expenditure ..							5	5	0
Total Expenditure							2,208	10	9
Balance being excess of Total Income over									
Total Expenditure for the Year							1,694	15	2
							£3,903	5	11

Examined and found correct,

PRICE, WATERHOUSE & CO.,

CHARTERED ACCOUNTANTS,

10th March, 1924.

3, Frederick's Place, Old Jewry, E.C.2.

Society.

HOME, CUDHAM, KENT.

31st December, 1923.

ASSETS.

	£	s.	d.	£	s.	d.
1. By CASH AT BANK AND IN HAND—						
(A) Generally on Account of the Convalescent Home				2,153	15	8
2. By SUNDRY DEBTORS—						
Seamen's Hospital Society				53	10	1
3. By INVESTMENTS ON CAPITAL ACCOUNT—						
(A) For Special Purposes—						
(a) Hospital Endowments (see page 70).....	12,350	9	0			
(B) For Buildings and Equipment			<i>Nil</i>			
(C) For General Purposes—						
Government and other Stocks (see page 70)..	5,268	2	6			
(Market Value, £5,577 11s. 2d.)						
				17,618	11	6
4. By LANDS, BUILDINGS AND EQUIPMENT—						
Expenditure as per last Balance Sheet	5,773	3	1			
Added since.....	51	9	0			
				5,824	12	1

 £25,650 9 4

Examined and found correct,

PRICE, WATERHOUSE & CO.,

CHARTERED ACCOUNTANTS,

10th March, 1924.

3, Frederick's Place, Old Jewry, E.C.2.

SAMARITAN FUND.

Cash Account for the Year ended 31st December, 1923.

Dr.	RECEIPTS.	Cr.	PAYMENTS.
	£ s. d.		£ s. d.
Jan. 1st, 1923—		Expenses incurred during the year	
Balance in hand	469 0 5	in connection with monetary	
Dividends—		assistance rendered to distressed	
“Luscombe” Memorial		Seamen on leaving Hospital, in	
Fund	3 2 6	payment of railway fares, in the	
“Walter Adams” Mem-		purchase of surgical appliances	
orial Fund	2 14 2	and clothing, in payment for	
“George Sturge” Fund	27 11 10	convalescent treatment	281 3 1
“Guthrie Rankin” Fund	54 4 8	Cash in hand of Seamen's Hospital	
	87 13 2	Society (see page 59)	591 9 11
Donations—			
Navy League	22 0 5		
Mrs. Griffiths	5 0		
Mrs. Carden	10 0		
Miss Sterling	2 0 0		
Miss A. Godfray	5 0		
Miss L. M. Thresher ..	5 0		
Miss E. Dawson Lamb-			
ton	10 0		
Anonymous	2 0 0		
	27 15 5		
Deceased Patients' money	207 0 4		
Donations towards Cost			
of Appliances—			
A. Percy	7 6		
M. Carrell	3 3 0		
E. Hall	3 0 0		
G. Andrews	3 3 0		
A. C. Claxton	5 6		
E. Hall	2 0 0		
G. H. Green	2 0 0		
A. Cahill	4 6		
T. Sheppard	16 6		
T. Willis	5 0		
F. Wakeley	7 6		
J. McLachlan	9 6		
T. Simes	4 6		
J. Ward	1 7 6		
City of Lancaster ..	1 5 0		
C. Patrick	4 6		
Seamen's Nat. Insur.			
Society	15 10		
N. Burlington	2 2 0		
W. H. Campbell	7 6		
W. Aldrich	5 0		
W. Mooney	2 0 0		
Nat. Amal. App. Society	9 1 4		
E. Arrowsmith	4 6		
C. Gilbert	6 0 0		
Borough of Poplar ..	4 0 0		
J. Beech	2 10 0		
H. Gray	4 2 0		
J. Kachan	2 0 0		
J. Torneath	7 6		
A. Leggett	3 9 0		
W. Brook	1 0 0		
Union Castle Line ..	3 15 0		
A. Bradshaw	2 10 0		
Trinity House	4 4 0		
A. Jackson	1 0 0		
W. Webb	1 5 0		
Van Oppen & Co. ..	3 5 0		
H. Brown	10 0		
W. Thornton	2 6		
Hospital Saturday Fund	15 0		
M. Winter	10 0		
G. Early	3 0		
G. Grimley	8 0		
W. Hayward	3 3 0		
T. Tacon	2 5 0		
	81 3 8		
	£872 13 0		
			£872 13 0

LONDON SCHOOL OF HYGIENE AND TROPICAL MEDICINE.

Temporary Offices :—
INSTITUTE OF HISTORICAL RESEARCH
(UNIVERSITY OF LONDON),
MALET STREET,
LONDON, W.C. 1.

In any further communication, please quote.....

Subject of communication acknowledged.....

.....

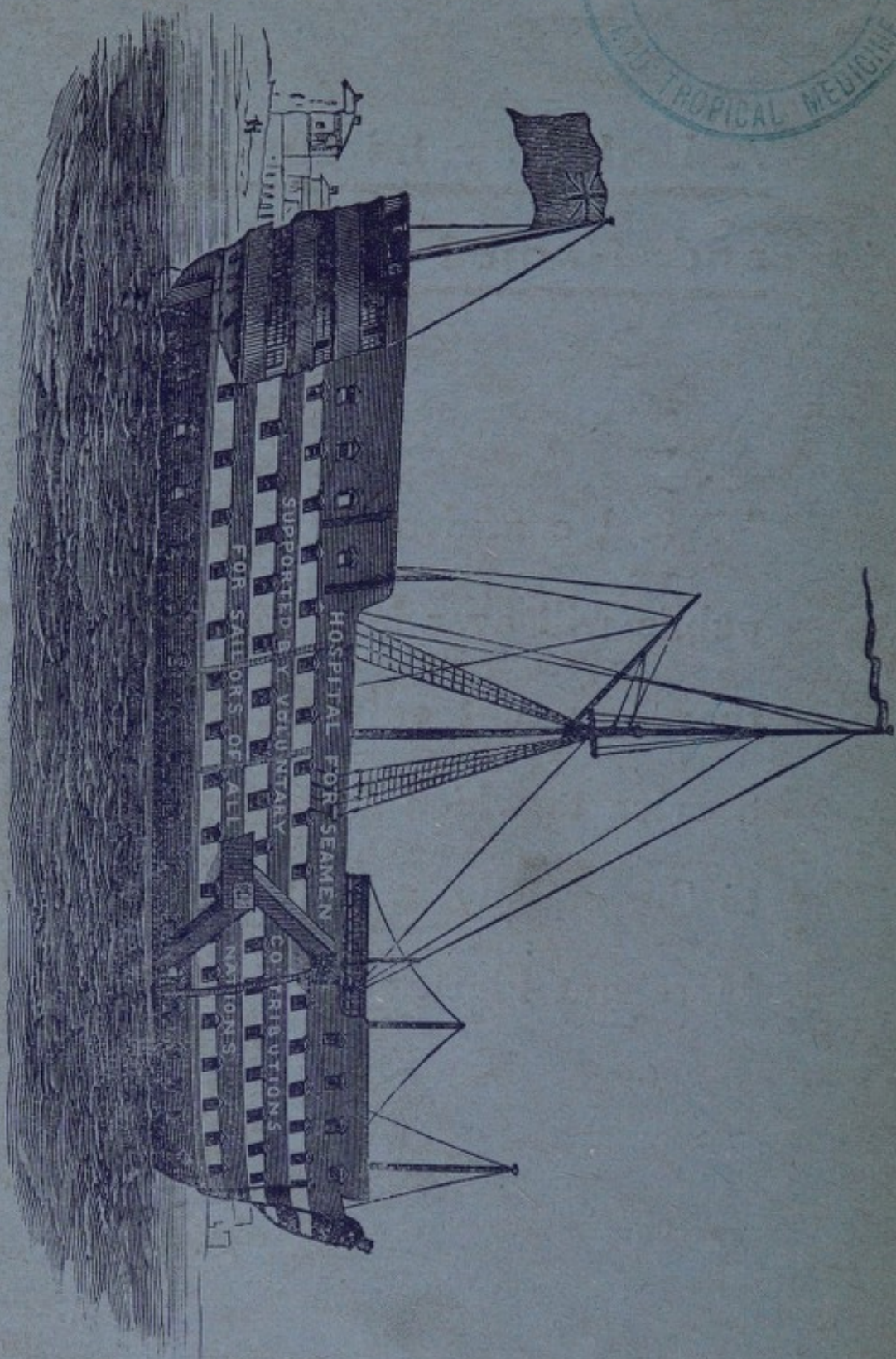
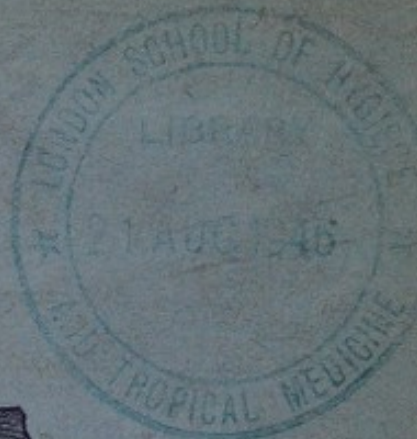
The Secretary begs to acknowledge receipt of your letter, dated
.....*which is receiving attention.*



A Bed may be Endowed
and Named for £1,000.

“ I feel confident that the British public will ever bear in mind what they owe, not only to men of the Service to which I belong, but also to the equally gallant men of the Merchant Fleet.”

BEATTY,
Admiral of the Fleet.



HOSPITAL SHIP, "DREADNOUGHT,"
FORMERLY LYING OFF GREENWICH.