

Annual report : 1943 / Seamen's Hospital Society "Dreadnought" for sick and injured sailors.

Contributors

Seamen's Hospital Society "Dreadnought" for Sick and Injured Sailors.

Publication/Creation

[London] : [Seamen's Hospital?], 1943

Persistent URL

<https://wellcomecollection.org/works/vc47etvn>

License and attribution

This work has been identified as being free of known restrictions under copyright law, including all related and neighbouring rights and is being made available under the Creative Commons, Public Domain Mark.

You can copy, modify, distribute and perform the work, even for commercial purposes, without asking permission.



Wellcome Collection
183 Euston Road
London NW1 2BE UK
T +44 (0)20 7611 8722
E library@wellcomecollection.org
<https://wellcomecollection.org>

18 MAY 1944

Library

The

Seamen's Hospital Society

"Dreadnought"



THE DREADNOUGHT HOSPITAL SHIP—1821-1871.

FOR SICK AND INJURED SAILORS
SUPPORTED BY VOLUNTARY CONTRIBUTIONS

ESTABLISHED 1821

Incorporated by Act of Parliament, 3^o Gul. IV, Cap. IX

THE ANNUAL REPORT FOR 1943

Patron :

HIS MOST GRACIOUS MAJESTY THE KING.

President :

THE RT. HON. LORD MOYNE, P.C., D.S.O.

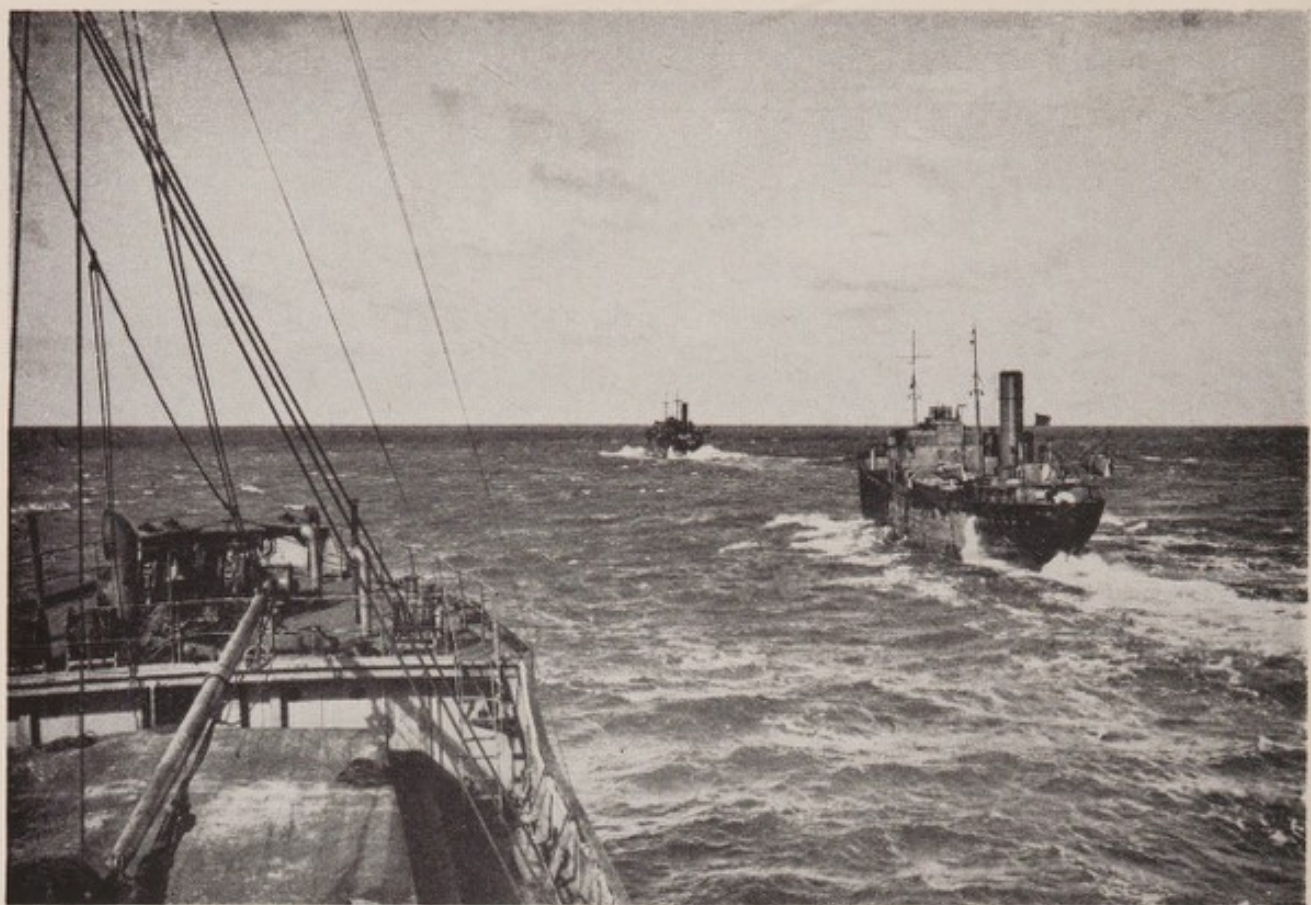
Committee of Management :

Chairman : Capt. Sir ION HAMILTON BENN, Bart., C.B., D.S.O., T.D., R.N.V.R.

Deputy Chairman | Admiral of the Fleet The Rt. Hon. The EARL OF CORK & ORRERY,
Chairman | G.C.B., G.C.V.O.

Head Office : SEAMEN'S HOSPITAL, GREENWICH, S.E.10

THESE ARE OUR SHIPS



THESE ARE OUR MEN



**ESTABLISHMENTS
OF THE
SEAMEN'S HOSPITAL SOCIETY.**

(Incorporated by Act of Parliament, 3rd Gul. IV, Cap. IX).

**" DREADNOUGHT " SEAMEN'S HOSPITAL,
GREENWICH, S.E.10.**

Tel. Address—" DREADNOUGHT, GREENWICH."
Telephone—GREENWICH 1881 (3 lines).

**ALBERT DOCK HOSPITAL,
ALNWICK ROAD, E.16.**

Telephone—ALBERT DOCK 2234.

TILBURY HOSPITAL, TILBURY DOCKS, ESSEX.

Telephone—TILBURY 520.

**KING GEORGE'S SANATORIUM FOR SAILORS,
BRAMSHOTT PLACE, LIPHOOK, HANTS.**

Telephone—LIPHOOK 3153.

**THE ANGAS HOME RECOVERY HOSPITAL,
CUDHAM, KENT.**

Telephone—BIGGIN HILL 3.

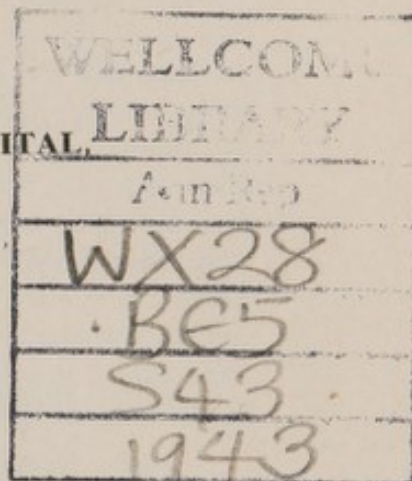
HOSPITAL FOR TROPICAL DISEASES,

Consultative Outpatient Clinic held at
LONDON SCHOOL OF HYGIENE AND TROPICAL MEDICINE,
Keppel Street, W.C.1.

All communications to:—

The Secretary, Seamen's Hospital Society, Greenwich.

**QUEEN ALEXANDRA MEMORIAL HOSPITAL,
MARSEILLES, FRANCE.**



22501925566

OFFICERS OF THE INSTITUTION

For 1944-45.

Patron.

P., 1921. HIS MOST GRACIOUS MAJESTY THE KING.

Patroness.

1910. HER MOST GRACIOUS MAJESTY QUEEN MARY.

President.

1941. THE RIGHT HON. LORD MOYNE, P.C., D.S.O.

Vice-Presidents.

1902. THE RIGHT REV. AND RIGHT HON. A. F. WINNINGTON-INGRAM, K.C.V.O., D.D., LL.D.
 1907. THE MOST HON. THE MARQUIS OF SALISBURY, K.G.
 1907. THE RIGHT HON. LORD QUICKSWOOD, P.C.
 1924. THE RIGHT HON. LORD SOUTHBOROUGH, P.C., G.C.B., G.C.M.G., G.C.V.O., K.C.S.I.
 1930. SPENCER S. DICKSON, Esq., C.M.G.
 1933. MRS. L. G. ANGAS.
 1933. THE RIGHT HON. LORD ESSENDON.
 1936. CAPTAIN SIR ARTHUR MORRELL, K.B.E., J.P. (*Deputy Master, Trinity House*).
 C., 1924. } ADMIRAL THE HON. SIR ALGERNON BOYLE, K.C.B.,
 V.P. 1936. } C.M.G., M.V.O.
 1938. THE LADY CRAIGMYLE.
 1938. THE RIGHT HON. VISCOUNT NUFFIELD, O.B.E., D.C.L.
 1938. SIR ALAN ANDERSON, G.B.E.
 1943. SIR WILLIAM CURRIE.

Trustees.

- | | | | |
|-----------|-------------------------|-----------|------------------------|
| C., 1914 | } J. CYRIL NAIRNE, Esq. | C., 1936. | } C. S. ANDERSON, Esq. |
| T., 1922. | | T., 1939. | |
| C., 1924. | } A. M. HUGHES, Esq. | C., 1936. | } W. F. SMITH, Esq. |
| T., 1936. | | T., 1939. | |

and the OFFICIAL TRUSTEES OF CHARITABLE FUNDS.

Honorary Treasurers.

1903. COLONEL SIR ROBERT WILLIAMS, BT.
 1939. J. CYRIL NAIRNE, Esq.

Solicitor.

1921. PERCEVAL R. A. BAKER, Esq., Salter's Hall Lodge, E.C.4.

Committee of Management.

- | | | |
|--|---|--|
| C., 1906. | } | CAPTAIN SIR ION HAMILTON BENN, Bt., C.B., D.S.O.,
T.D., R.N.V.R. (<i>Port of London Authority</i>), <i>Chairman</i> . |
| Dep. Ch., 1923. | | |
| Ch., 1937. | | |
| C., 1929. | } | ADMIRAL OF THE FLEET THE RT. HON. THE EARL OF
CORK & ORRERY, G.C.B., G.C.V.O., <i>Deputy Chairman</i> . |
| Dep. Ch., 1937. | | |
| 1944. COMMODORE A. W. S. AGAR,
V.C., D.S.O., R.N. (<i>President</i> ,
<i>R.N. College, Greenwich</i>). | 1943. SIR CHARLES JEFFRIES,
K.C.M.G., O.B.E. | |
| 1936. C. S. ANDERSON, Esq. (<i>Orient</i>
<i>Line</i>). | 1938. ADMIRAL SIR CHARLES
KENNEDY - PURVIS, K.C.B.
(<i>Deputy First Sea Lord</i>). | |
| 1928. F. ARNOLD BAKER, Esq. (<i>Master</i>
<i>of the Supreme Court</i>). | 1939. CAPTAIN GUY LYDEKKER,
O.B.E., D.S.C., R.N. | |
| 1939. A. BINNS, Esq., M.Inst.C.E.,
M.I.Mech.E. | 1938. E. H. MURRANT, Esq., M.B.E.
(<i>Deputy Chairman, Furness,</i>
<i>Withy & Co., Ltd.</i>). | |
| 1932. L. H. BOLTON, Esq. (<i>Deputy</i>
<i>Chairman, Port of London</i>
<i>Authority</i>). | 1914. J. CYRIL NAIRNE, Esq. | |
| 1943. CAPTAIN W. E. CRUMLIN,
R.N.R. and CAPTAIN A. S.
MACKAY, R.D., R.N.R. (<i>Elder</i>
<i>Brethren of the Trinity House</i>). | 1933. COMMANDER R. M. PRIOR,
D.S.O., D.S.C., R.N., M.P. | |
| 1936. SIR CLIFFORD FIGG. | 1898. SIR HERBERT READ, G.C.M.G.,
C.B. | |
| 1939. VICE-ADMIRAL THE RIGHT HON.
THE EARL GRANVILLE, C.B.,
D.S.O. | 1936. W. F. SMITH, Esq. | |
| 1938. IAN M. HOOPER, Esq. | 1939. W. C. WARWICK, Esq. (<i>Houlder</i>
<i>Bros., Ltd.</i>). | |
| 1923. ADMIRAL SIR GEORGE P. W.
HOPE, K.C.B., K.C.M.G. | 1924. COLONEL SIR FRANCIS WHIT-
MORE, K.C.B., C.M.G., D.S.O.
(<i>Lord Lieutenant of Essex</i>). | |
| 1928. ADMIRAL RONALD HOPWOOD,
C.B. | 1929. THE RIGHT HON. SIR LESLIE
WILSON, G.C.S.I., G.C.M.G.,
G.C.I.E., D.S.O. (<i>Governor of</i>
<i>Queensland</i>). | |
| 1942. C. JARMAN, Esq. (<i>Gen. Secretary</i> ,
<i>National Union of Seamen</i>). | 1943. THE RT. HON. LORD WINSTER.
1939. SIR FREDERICK YOUNG. | |

Auditors.

1943. Messrs. GUNDRY COLE & Co.,
Chartered Accountants,
3, Great Winchester Street, E.C.2.

Bankers.

1821. WILLIAMS DEACON'S BANK, LTD., 20, Birchin Lane, London, E.C.3.
1908. WESTMINSTER BANK, LTD., Greenwich, S.E.10.

Administrator and Secretary.

- | | | |
|--------------------|---|-------------------------------|
| Steward, 1923. | } | F. A. LYON, Esq., B.A.(Oxon.) |
| Assist Sec., 1927. | | |
| Secretary, 1935. | | |

Accountant.

1923. L. F. LAND.

Acting Accountant.

1939. A. J. FISHER.
Asst. Accountant, 1917.

Appeal Secretary.

1937. T. HAMILTON REDDY.

Steward.

1943. J. A. WARBURTON.

HEAD OFFICE : Seamen's Hospital Society, Greenwich, S.E.10.

Tel : Greenwich 1881.

Dreadnought Hospital, Greenwich.

Consulting Physician.

1937. GORDON M. HOLMES, Esq., C.M.G., M.D., F.R.C.P.
Assist. Phy., 1910. Neurologist, 1914. Consult. Phy., 1937.

Consulting Surgeons.

1919. W. TURNER, Esq., M.S. (Lond.), F.R.C.S.
Surgeon, 1896. Consult. Surgeon, 1919.

1919. E. ROCK CARLING, Esq., F.R.C.S.
Assist. Surg., 1905. Surgeon, 1911. Consult. Surg., 1919.

Consulting Physician for Diseases of the Skin.

1924. HENRY MACCORMAC, Esq., C.B.E., M.D., F.R.C.P.
Assist. Phy., 1912-1918. Consult. Phy., 1924.

Consulting Ophthalmic Surgeon.

1919. L. VERNON CARGILL, Esq., F.R.C.S.
Surgeon, 1899. Consult. Surg., 1919.

Consulting Surgeon for Diseases of Throat, Nose and Ear.

1920. RICHARD LAKE, Esq., F.R.C.S.
Surgeon, 1909. Consult. Surg., 1920.

Consulting Neurologist.

1937. F. M. R. WALSH, Esq., O.B.E., M.D., F.R.C.P.

Consulting Physician in Tropical Medicine.

1941. SIR PHILIP MANSON-BAHR, C.M.G., D.S.O., M.D., F.R.C.P., D.T.M. & H.
(Consulting Physician to the Colonial Office and Crown Agents for the Colonies).

Physicians.

1917. CHARLES E. SUNDELL, Esq., M.D., M.R.C.P.
Assist. Phy., 1914. Physician, 1917.

1930. A. C. HAMPSON, Esq., M.C., M.D., F.R.C.P.
Assist. Phy., 1929. Physician, 1930.

Physicians with Charge of Out-Patients.

1938. W. G. OAKLEY, Esq., M.D., F.R.C.P.
1939. ALEC WINGFIELD, Esq., M.D., B.S., M.R.C.P.

Surgeons

1919. PERCIVAL P. COLE, Esq., F.R.C.S.
Assist. Surg., 1912. Surgeon, 1919.

1921. E. T. C. MILLIGAN, Esq., O.B.E., F.R.C.S.
Assist. Surg., 1920. Surgeon, 1921.

Gynaecologist.

1935. KEITH DUFF, Esq., F.R.C.S., M.C.O.G.

Ophthalmic Surgeon.

1919. R. E. BICKERTON, Esq., D.S.O., M.B., Ch.B.
Assist. Oph. Surg., 1907. Oph. Surg., 1919.

Surgeon for Diseases of Throat, Nose and Ear

1923. F. COURTENAY MASON, Esq., M.S., F.R.C.S.

Dental Surgeon.

1913. J. BRAMLEY BALL, Esq., M.R.C.S., L.R.C.P., L.D.S.

Physician for Diseases of the Skin.

1939. DAVID ERSKINE, Esq., M.D., D.P.H.

Physician-in-Charge of Psycho-Therapeutic Department.

1937. CLIFFORD ALLEN, Esq., M.D., D.P.M.

Radiologist.

1920. MARTIN BERRY, Esq., M.D., D.M.R.E.

Assistant Radiologist.

1935. G. WHITE PHILLIPS, Esq., M.D., D.M.R.E.

1944. HOWARD HALPER, Esq., M.R.C.S., L.R.C.P., D.M.R.E.

Director-in-Charge of Department of Physical Medicine.

1931. JOHN SAINSBURY, Esq., M.B., B.Ch.Oxon

Director of Pathology.

1935. ARTHUR DAVIES, Esq., M.D., M.R.C.P.

Pathologist, 1910. Assist. Dir., 1920. Co. Dir., 1926. Director, 1935

Assistant Pathologist.

1938. J. B. NEAL, Esq., M.R.C.S., L.R.C.P.

Anæsthetists.

1927. J. K. HASLER, Esq., M.B., B.S.

1935. W. W. MUSHIN, Esq., M.B., B.S., D.A.

1935. R. ATWOOD BEAVER, Esq., M.R.C.S., L.R.C.P.

Acting Anæsthetists.

1943. A. COLEMAN, Esq., M.B., Ch.B., M.R.C.P., D.A.

1943. Miss A. OFENHEIM, M.R.C.S., L.R.C.P., D.A.

Director of U. D. Clinic.

1933. PERCIVAL P. COLE, Esq., F.R.C.S.

The Chaplain.

1912. Duties performed by the Chaplains of the Missions to Seamen,
Port of London.

Albert Dock Hospital.

Consulting Physician.

1937. G. CARMICHAEL LOW, Esq., M.D., F.R.C.P.

Assist. Phy., 1912. Physician, 1918. Consult. Phy., 1937.

Consulting Surgeon.

1929. T. POMFRET KILNER, Esq., M.B., F.R.C.S.

Surgeon, 1921. Consult. Surg., 1929.

Consulting Dental Surgeon.

1936. T. H. VAUGHAN, Esq., L.D.S.

Surgeon, 1915. Consult. Surg., 1936.

Physician

1921. SIR PHILIP MANSON-BAHR, C.M.G., D.S.O., M.D., F.R.C.P., D.T.M. & H.

Assist. Phy., 1918. Physician, 1921.

(Consulting Physician to the Colonial Office and Crown Agents for the Colonies).

Physician with Charge of Out-Patients.

1937. F. MURGATROYD, Esq., M.D., M.R.C.P., D.T.M.

Acting Casualty Medical Officer with charge of Out-Patients.

1940. H. C. BOYDE, Esq., M.B., B.S.

Surgeons

1921. H. ERNEST GRIFFITHS, Esq., M.S., F.R.C.S.

1929. C. HOPE CARLTON, Esq., M.C., M.Ch., F.R.C.S.

Assistant Surgeon.

1939. R. E. NORRISH, Esq., F.R.C.S.

Radiologist.

1930. FRANKLIN G. WOOD, Esq., M.B., B.Ch., D.M.R.E.

Dental Surgeon.

1931. R. S. TAYLOR, Esq., M.R.C.S., L.R.C.P., L.D.S.

Assistant Dental Surgeon.

1938. A. V. EARLE, Esq.

Pathologist.

1920. H. M. HANSHELL, Esq., D.S.C., M.R.C.S.,
L.R.C.P., D.T.M. & H.
Pathologist, 1920. Hon. Med. Supt., 1924.

Anaesthetist.

1935. FRANKIS T. EVANS, Esq., M.B., B.S., D.A.

Director of U. D. Clinic.

1920. H. M. HANSHELL, Esq., D.S.C., M.R.C.S., L.R.C.P.,
D.T.M. & H.

Matron.

1942. Miss M. FOSTER SMITH.

The Chaplain.

1917. Duties performed by the Chaplains of the Missions to Seamen,
Port of London.

Tilbury Hospital.

Consulting Physicians in Tropical Diseases.

1927. SIR PHILIP MANSON-BAHR, C.M.G., D.S.O., M.D., F.R.C.P., D.T.M. & H.
(Consulting Physician for the Colonial Office and Crown Agents for the Colonies).

1937. N. HAMILTON FAIRLEY, Esq., O.B.E., F.R.S., M.D., D.Sc., F.R.C.P.
D.T.M. & H.

Consulting Physician.

1932. CHARLES E. SUNDELL, Esq., M.D., M.R.C.P.

Asst. Consulting Physician.

1934. HUGH WILLOUGHBY, Esq., M.R.C.S., L.R.C.P., D.T.M. & H., D.P.H.

Consulting Surgeon.

1930. C. G. E. PLUMSTEAD, Esq., M.B., B.Ch., M.R.C.S., L.R.C.P.

Surgeon.

1944. H. A. D. SMALL, Esq., M.B., Ch.B.(N.Z.), F.R.C.S.(Eng.).

Acting Dental Surgeon.

1943. J. BRAMLEY BALL, Esq., M.R.C.S., L.R.C.P., L.D.S.

Anaesthetist.

1937. J. S. HAWES, Esq., M.R.C.S., L.R.C.P., D.A.

Radiologist.

1937. G. WHITE PHILLIPS, Esq., M.D., D.M.R.E.

Visiting Tuberculosis Officer.

1927. W. T. G. BOUL, Esq., M.D., Ch.B., D.P.H.

Chaplain.

1924. REV. WM. CHAS. BOWN, R.D.

Matron.

1942. Miss C. C. ROSS.

**King George's Sanatorium for Sailors, Bramshott,
Hampshire.**

Physician.

1922. CHARLES E. SUNDELL, Esq., M.D., M.R.C.P.

Surgeons.

1921. GILBERT SMITH, Esq., M.D., F.R.C.S.

1922. SIR HENRY GAUVAIN, M.C., M.D., F.R.C.S.

Laryngologist.

1927. F. COURTENAY MASON, Esq., M.S., F.R.C.S.

Chest Surgeon.

1938. A. TUDOR EDWARDS, Esq., M.D., F.R.C.S.

Dental Surgeons.

1921. Messrs. TAYLOR & STRICKLAND, Haslemere.

Medical Superintendent & Director.

1922. J. E. WOOD, Esq., M.R.C.S., L.R.C.P.

One Assistant Medical Officer.

Chaplain.

1941. THE REV. H. O. PARNELL.

Resident Secretary.

1937. LIEUT.-CDR. C. F. LOVELESS, R.N.

Matron.

1941. Mrs. M. HILL.

Angas Home, Recovery Hospital, Cudham.

Resident Medical Officer.

W. E. COOKE, Esq., F.R.C.S.I., D.P.H.

Matron.

1937. Miss D. LEWIS.

Hospital for Tropical Diseases.

For Staff up to outbreak of war, see 1939 Report.

Seamen's Hospital Society.

ANNUAL REPORT FOR THE YEAR 1943.

THE Committee of Management present the 123rd Annual Report of the Society.

During the fourth year of war the difficulties of administration have not diminished, particularly with regard to keeping the five hospitals adequately and suitably staffed and supplied. The Society has adopted the recommendations of the Rushcliffe Report on Nursing Salaries and Emoluments; notwithstanding the contributions to be made by the Ministry of Health the resulting increase in expenditure is very considerable. The recommendations of the Hetherington Committee on Minimum Rates of Wages and Conditions of Employment in connection with Special Arrangements for Domestic Help have been adopted and will also increase expenditure.

The Society has continued to take its part in discussions as to the future of the Hospital Services in general and, in particular, with regard to the continued identification of the Seamen's Hospitals with the Shipping Industry. The scheme for the post-war establishment at Greenwich of a Tropical Diseases Hospital and Centre based on the Seamen's Hospital Society and the London School of Hygiene and Tropical Medicine has been carried a stage further by the favourable welcome given by the War Cabinet to the report submitted by the Colonial Secretary after consideration by the eight Government Departments concerned.

Arising from representations made by the Society, the rights of officers and men of the Merchant Navy to free treatment under the Emergency Hospital Scheme have been clarified by the following definition "officers and seamen of all nationalities who are injured in the course of duty or who are suffering as the result of exposure on duty are entitled to hospital treatment free of charge under the Scheme." Those members of the Merchant Navy who do not fall within these categories are required to contribute towards the cost of their maintenance in E.M.S. Hospitals. The Seamen's Hospital Society continues to give the same maintenance and treatment to all British seamen as it has done for more than 120 years and is therefore still identified with the relief of distress among the sailors who, with matchless courage and endurance keep supplied with food and war material both the civilian population and the armed forces of the United Nations.

The cost of maintaining the five Seamen's Hospitals during 1943 was £90,000. The number of In-patients admitted was 3,938 and 16,063 Out-patients received treatment.

The Committee desire to express their sincere gratitude to all who have made gifts in money and kind for the benefit of the merchant seamen who have called upon the services of the Seamen's Hospitals. Their cordial appreciation is also here expressed to King George's Fund for Sailors, King Edward's Hospital Fund for London, the Metropolitan Hospital-Sunday Fund and the Royal Seamen's Pension Fund.

During the year Sir William Currie, Chairman of the P. & O. Steam Navigation Co., Ltd., upon the recommendation of the Committee of Management, was elected a Vice-President.

The death occurred on 7th January, 1944, of Sir Norman Hill, Bt., Chairman of the Governing Body of the Royal Seamen's Pension Fund, who was elected a Vice-President of the Society in 1923.

In the fortieth year of his service as an Honorary Treasurer, Colonel Sir Robert Williams, Bt., died on the 15th April, 1943.

It is with deep regret and in proud memory that the Committee report the death on active service as Commodore of Convoy of Captain H. C. Birnie, D.S.O., an Elder Brother of Trinity House, who had been a Member of the Committee since 1927.

Upon his retirement as Marine Superintendent of the P. & O. S. N. Company, Ltd., Captain W. H. Sweny, C.B.E., R.D., R.N.R., resigned the seat on the Committee to which he was elected in 1929.

There have been elected to the Committee Sir Charles Jeffries, K.C.M.G., O.B.E., Under-Secretary of State to the Colonial Office, the Rt. Hon. Lord Winster and Commodore A. W. S. Agar, V.C., D.S.O., R.N., President of the Royal Naval College. As their active service has permitted, Captain W. E. Crumplin, R.N.R., and Captain A. S. Mackay, R.D., R.N.R., Elder Brethren of Trinity House, have served on the Committee.

Commander R. M. Prior, D.S.O., D.S.C., R.N., M.P., escaped from imprisonment in France, was awarded the D.S.O., and was elected Member of Parliament for the Aston Division of Birmingham.

To mark their high sense of Mr. Lyon's valued and unsparing service in managing the five Hospitals and advancing their interests under all the exigencies of wartime, the Committee have appointed him to be Administrator, as well as Secretary of the Corporation.

"The Society has suffered the loss of one of the ablest, most valuable and most devoted Officers who have ever been in its service." These are the words in which the Committee recorded the death on the 19th July of Mr. W. M. Revill, Assistant Secretary of the Corporation, who entered its service in 1936.

In conclusion, the Committee desire to express their appreciation of the continued loyalty and devotion in these difficult times of members of the Medical, Nursing and Administrative Staffs.

ION HAMILTON BENN,

13th April, 1944.

Chairman.

EVENTS OF THE YEAR 1943.

Captain Sir Arthur Morrell, K.B.E., J.P., Deputy Master of Trinity House, a Vice-President of the Society, presided on the 15th April at the 123rd Annual Court of Governors at which the Report of the Committee of Management was presented by the Chairman, Captain Sir Ion Hamilton Benn, Bt., C.B., D.S.O., T.D., R.N.V.R.

The Albert Thomas Cox Bed, the Schermuly Bed and the Radmore Bed have been endowed in the Dreadnought Hospital. Under the Will of the late Arthur Redington two Beds have been endowed in the Tilbury Hospital. The P.L.A. Police Bed Endowment Fund has been opened for the purpose of endowing a Bed in the Albert Dock Hospital. The 23rd Battalion County of London Home Guard Fund aims at raising £500 as a tribute in perpetuity to the matchless courage and endurance of Officers and Men of the Merchant Navy. (See p. 12.)

Legacies for general purposes amounted to £5,287. (See p. 32.)

Among the special donations received from all parts of the world may be mentioned £4,250 from the Merchant Navy Fund, South Africa, per Mrs. A. M. Campbell; £1,500 from the Odeon Services & Seamen's Fund; £430 in monthly payments from the Canadian Red Cross Society; from the London Shipowners' Voluntary Contributions Scheme a further £375; a further £300 from Mrs. Ravenscroft; £300 from Kenya War Welfare Fund; £250 from the Madras War Committee, per the Honourable Company of Master Mariners; £167 8s. 3d. from R.A.F. Church Collections.

The following were elected Honorary Life Governors of the Corporation: Mrs. West, for services rendered for more than 20 years through the Seamen's Hospital Aid Committee; Mr. E. H. Marriage, Mr. Horace Norman and Mr. A. T. West for services rendered through the Grays Branch of the Tilbury Hospital Committee.

THE DREADNOUGHT HOSPITAL, GREENWICH.
Dr. W. W. Mushin has been granted leave of absence during the term of his appointment as First Assistant to the Nuffield Professor of

Anæsthetics at the University of Oxford. Dr. A. Ofenheim and Dr. A. Coleman have been elected to the temporary wartime appointments of Anæsthetist.

The Lady Louis Mountbatten, C.B.E., presented the Bernhard Baron Prizes on the 1st July to Nurses Vera Yarrow (Gold Medal), N. Kenneally (Silver Medal), C. Glanvill (3rd Year), E. Fuller (2nd Year), R. Jones and G. Jones (1st Year).

Acting Major A. A. Hood, Parachute Wing, 11th Special Air Service was awarded the M.B.E.

Sergeant G. Masee, R.M. was awarded the D.S.M. for gallantry in the Malta Convoy, 11-13th August, 1942.

THE ALBERT DOCK HOSPITAL develops with continued success the treatment of industrial injuries. As at the old hospital, which was "the cradle of tropical medicine," cases of tropical disease continue to receive expert specialised treatment they require here as well as at the Dreadnought Hospital.

THE TILBURY HOSPITAL has revealed during the year effects attributed to enemy action in further subsidence of the Women's Ward and the fracture of sections of the drainage system. Valuable additions to its equipment have been made by Ship Repairers in the Tilbury Docks. The Branches of the Tilbury Hospital Committee have had a most successful year.

KING GEORGE'S SANATORIUM FOR SAILORS has again experienced the greatest difficulties in obtaining adequate domestic staff and male ward attendants and the standard of the amenities for patients and nursing staff has unavoidably suffered in consequence.

THE ANGAS HOME RECOVERY HOSPITAL has been of the greatest value to seamen who, in the fourth year of war, show signs of strain when suffering from illness or accident.

THE HOSPITAL FOR TROPICAL DISEASES OUT-PATIENT CLINIC, held every Tuesday and Thursday afternoon at the London School of Hygiene and Tropical Medicine, Keppel Street, W.C.1, has provided facilities for consultation to an increasing number of those suffering from these maladies. The damaged building in Gordon Street, W.C.1, has been requisitioned by the Ministry of Works.

SAMARITAN FUND AND COMFORTS FUND.

From the earliest days, donations to the Samaritan Fund have enabled the Society to provide necessitous sailors on their discharge from hospital with surgical appliances, fares to their homes, clothing and small sums of money to tide them over a few days.

During the war, comforts for Merchant Seamen are distributed to the patients of the Seamen's Hospitals on behalf of many kind and generous friends in all parts of the world. Each gift has been acknowledged, but the Committee take this opportunity of expressing their cordial thanks to all, including the British Red Cross and Order of St. John War Organisation, The British War Relief Society of America, The Dudley House Committee, Bundles for Britain, The Merchant Navy Comforts Service, The Indian Comforts Fund, The Dreadnought Ladies Remembrance League, The Sanatorium Needlework Guild, The Tilbury Hospital Ladies Linen League, The Wingerworth Chesterfield Knitting Circle, The Ladies of Lincoln's Inn, The Chislehurst Hospital Supply Depot, The Central Supply Depot Ferring, and all who have collected Ship Halfpennies, tinfoil, and books for the patients' libraries.

Trust Funds of the Seamen's Hospital Society.

A full list appears in the Annual Report for 1942.

During 1943 the following additions were made :—

THE "RADMORE" BED.

Endowed in the Dreadnought Hospital by HORACE RADMORE, to the Glory of God and in affectionate memory of his beloved brother Dr. GEORGE RICHARD RADMORE, F.R.G.S., a former Senior Surgeon of "The White Star Line," who served as an Apprentice in sail. Invested in £1,000 3 per cent. Savings Bonds 1960/70. Trustees, "The Official Trustees of Charitable Funds."

THE "ARTHUR REDINGTON" BEDS.

Two Beds endowed in the Tilbury Hospital by bequest under the Will of the late ARTHUR REDINGTON of Grays, Essex. Invested in £2,000 3 per cent. Savings Bonds 1960/70. Trustees, "The Trustees of the Seamen's Hospital Society."

THE "SCHERMULY" BED.

Endowed in the Dreadnought Hospital by his family in memory of AUGUSTUS WILLIAM LOUIS SCHERMULY for the care of sick sailors especially of any old boys of the Marine Society's T.S. "Warspite." Invested in £1,000 3 per cent. Savings Bonds 1960/70. Trustees, "The Official Trustees of Charitable Funds."

THE "ALBERT THOMAS COX" BED.

Endowed in the Dreadnought Hospital under the Will of the Testator by the transfer of the following securities : £175, 2½ per cent. Consolidated Loan Inscribed Stock ; £500, 3 per cent. Local Loans Inscribed Stock ; £1,000 3 per cent. Local Loans, Post Office Register. Trustees, "The Trustees of The Seamen's Hospital Society."

THE "P.L.A. POLICE" BED ENDOWMENT FUND.

A Fund of £1,000 is being collected by kind permission of W. H. SIMMONS, Esq., M.B.E., Acting Chief Police Officer, for the endowment of a Bed in the Albert Dock Hospital.

THE "23rd BATTALION COUNTY OF LONDON HOME GUARD" FUND.

A Fund of £500 is being collected as a tribute in perpetuity to the matchless courage and endurance of Officers and Men of the Merchant Navy.

THE "DEVONPORT PATHOLOGICAL LABORATORY RESEARCH" FUND.

This Fund has been established to further research in the Devonport Pathological Laboratories at the Dreadnought Hospital, Greenwich, for the express benefit of Officers and Men of the Mercantile Marine, £7,073 4s. 4d. invested in £1,184 3s. 6d. 3½ per cent. Conversion Stock, 1961 ; £973 14s. 4d. in 3½ per cent. War Loan, 1952 ; £3,063 0s. 8d. in 3 per cent. Savings Bonds, 1955/65 ; £1,011 6s. 7d. in 2 per cent. Conversion Loan, 1943/45 ; £1,000 in 3 per cent. Savings Bonds, 1960/70. Trustees, "The Trustees of the Seamen's Hospital Society" and "The Official Trustees of Charitable Funds."

NAMED BEDS AND WARDS

" D."—Dreadnought ; " A.D."—Albert Dock ; " A.H."—Angas Home ; " K.G.S."—Sanatorium ; " H.T.D."—Hospital for Tropical Diseases ; " T."—Tilbury ;
" M."—Marseilles.

THE CHARLTON BED, " D."	1890
THE JENNINGS BED, " A.D."	1891
THE GOTHIC BED, " A.D."	1893
THE DONALD CURRIE WARD, " D."	1896
THE COOTE BED, " A.D."	1897
THE QUEEN VICTORIA BED, " A.D."	1897
THE SIR WILLIAM MAXWELL COT, " A.D."	1899
THE P. & O. BED, " A.D."	1899
THE NAIRNE BED, " A.D."	1899
THE MALCOLM CAMPBELL BED, " A.D."	1902
THE TRINITY HOUSE BED, " A.D."	1904
THE BUCKWELL BED, " D."	1906
THE CHRYSANTHEMUM BED, " D."	1908
THE MAUDE ASHLEY BED, " D."	1912
THE MAUDE ASHLEY COT, " A.D."	1912
THE MAUDE ASHLEY BED, " A.D."	1916
THE NORMAN AUSTIN TAYLOR BED, " A.H."	1918
THE LLOYDS BANK BED, " D."	1920
THE PRUDENTIAL BED, " D."	1925
THE STOCK EXCHANGE DRAMATIC AND OPERATIC SOCIETY BED, " D."	1930
THE PRUDENTIAL BED, " T."	1933
THE HARRY HARDEE COT, " D."	1935
THE NAIRN BED, " A.D."	1935
THE H.M. SUBMARINE SERVICE, 1914-1918, BED, " A.D."	1935
THE STELLA MARIS BED, " A.D."	1936
THE LONDON OCEAN SHIPOWNERS AND MASTER STEVEDORES CORONATION FUND BED, " A.D."	1937
THE THIRD THAMES BED, " A.D."	1938
THE SIR WILLIAM JULIEN COURTAULD, BART. BEDS, " T."	1940
THE COMPTON COT, " A.H."	1940

Table showing different Countries to which In-patients treated by the Society belonged.

	From 1st Jan. to 31st Dec., 1943	Total number since foundation		From 1st Jan. to 31st Dec., 1943	Total number since foundation
			<i>Brought forward</i>	3,597	289,121
England	2,933	205,711	India	116	9,015
Scotland	138	22,404	Ionian Isles	—	6
Ireland	162	17,778	Italy	—	1,960
Wales	58	5,242	Jamaica	1	160
Channel Islands	2	730	Japan	—	908
Abyssinia	—	6	Latvia	2	130
Aden	2	103	Madagascar	5	10
Africa	35	1,887	Madeira	—	4
Antigua	—	4	Malay	2	94
Arabia	3	299	Malta	12	500
Assyria	—	2	Mauritius	2	148
Australia	35	1,627	Mexico	—	9
Austria	—	3,009	Newfoundland	1	73
Azores	—	2	New Zealand	13	648
Barbados	1	102	Norway	16	10,476
Belgium	10	433	Nova Scotia	—	10
Bermuda	—	13	Palestine	—	44
Brazil	6	90	Persia	—	24
British America	1	3	Peru	—	6
British Colonies (before detailed classification)	—	539	Philippine Islands	1	8
British Guiana	4	102	Poland	15	2,200
Bulgaria	—	5	Portugal (including Goa)	9	1,870
Canada	23	2,944	Roumania	—	136
Cape Verde Islands	—	5	Russia	5	2,074
Ceylon	1	203	Samoa	—	6
Chili	—	33	St. Helena	—	9
China	16	2,621	St. Vincent	—	11
Cochin China	—	4	Seychelles	1	26
Corsica	1	5	Siam	—	10
Crete	—	4	Sierra Leone	—	40
Cuba	—	7	South Africa	7	669
Cyprus	3	95	South America	—	675
Curaçao	—	2	South Sea Islands	—	308
Czechoslovakia	4	64	Spain	4	1,049
Denmark	16	3,674	Straits Settlement	1	13
Dominica	—	1	Sweden	16	8,116
East Indies	2	5,697	Switzerland	—	105
Egypt	11	242	Tasmania	—	60
Estonia	6	211	Trinidad	1	33
Finland	—	3,498	Turkey	—	159
France	52	1,438	United States	67	5,100
Germany	—	5,426	Uruguay	1	2
Gibraltar	—	20	Venezuela	—	2
Greece	15	1,012	West Indies	13	4,232
Greenland	—	1	Yugoslavia	30	56
Holland	56	1,789	Zanzibar	—	7
Iceland	1	24	Born at Sea	—	230
<i>Carried forward</i>	3,597	289,121	TOTAL	3,938	340,552

DREADNOUGHT HOSPITAL.

Statistics for Year to 31st December, 1943, compared with those of the previous year.

I.—IN-PATIENTS.

(A)—Number of Beds and In-Patients.		Numbers in 1943.	Numbers in previous year.
1. BEDS.—(a) Complement		257	257
(b) Average Daily Complement during the year		257	257
(c) Average Daily Number closed during the year owing to:—			
(i) Rebuilding or Extension Schemes		Nil	Nil
(ii) Repairs, Redecoration, Cleaning or Infection		Nil	Nil
(iii) Other causes — Enemy action		118	121.3
Closed under E.H.S.		77	77
(d) Average Daily Number open during the year:—			
(i) E.H.S. Casualty Beds		44	41.3
(ii) Other Beds		18	17.4
(e) Average Daily Number occupied during the year:—			
(i) E.H.S. Casualty Beds occupied by Casualties		23.4	22.3
(ii) Other Beds		16.3	15.8
2. Number of In-Patients in the Hospital at beginning of the year		45	43
3. " " admitted during the year		1,350	1,040
4. " " in the Hospital at the end of the year		32	45
5. Average number of days each Patient was resident		10.6	13.4
Ascertained by dividing the total of daily counts (14,509) by the number of Patients treated to a conclusion, i.e. (2)+(3)–(4).			
6. Number of Patients admitted and discharged during the year who were resident for—			
(i) only one day		163	96
(ii) two and three days		189	141

II.—OUT-PATIENTS.

(A)—Numbers.		Numbers in 1943.	Numbers in previous year.
1. Total number of new Out-Patients		4,845	4,376
2. Total number of Out-Patient attendances		21,327	20,467
(a) Number of Casualty Patients included in No. 1 above		1,085	1,225

ALBERT DOCK HOSPITAL.

Statistics for Year to 31st December, 1943, compared with those of the previous year.

I.—IN-PATIENTS.

(A)—Number of Beds and In-Patients.		Numbers in 1943.	Numbers in previous year.
1. BEDS.—(a) Complement		55	55
(b) Average Daily Complement during the year		55	55
(c) Average Daily Number closed during the year owing to:—			
(i) Rebuilding or Extension Schemes		Nil	Nil
(ii) Repairs, Redecoration, Cleaning or Infection		Nil	Nil
(iii) Other causes—Enemy action		Nil	Nil
(d) Average Daily Number open during the year:—			
(i) E.H.S. Casualty Beds		25	25
(ii) Other Beds		30	30
(e) Average Daily Number occupied during the year:—			
(i) E.H.S. Casualty Beds occupied by Casualties		20.8	21.7
(ii) Other Beds		22.0	19.8
2. Number of In-Patients in the Hospital at beginning of the year		39	23
3. " " admitted during the year		1,126	910
4. " " in the Hospital at the end of the year		49	39
5. Average Number of days each Patient was resident		14.3	16.9
Ascertained by dividing the total of daily counts (15,943) by the number of Patients treated to a conclusion, i.e. (2)+(3)–(4).			
6. Number of Patients admitted and discharged during the year who were resident for—			
(i) only one day		136	91
(ii) two and three days		154	118

II.—OUT-PATIENTS.

(A)—Numbers.		Numbers in 1943.	Numbers in previous year.
1. Total number of new Out-Patients		5,534	4,998
2. Total number of Out-Patient attendances		37,825	33,547
(a) Number of Casualty Patients included in No. 1 above		3,099	2,977

TILBURY HOSPITAL.

Statistics for Year to 31st December, 1943, compared with those of the previous year.

I.—IN-PATIENTS.		Numbers in	Numbers in
(A) Number of Beds and In-Patients.		1943.	previous year.
1.	BEDS.—(a) Complement	116	116
	(b) Average Daily Complement during the year	116	116
	(c) Average Daily Number closed during the year owing to:—		
	(i) Rebuilding or Extension Schemes	Nil	Nil
	(ii) Repairs, Redecoration, Cleaning or Infection	Nil	Nil
	(iii) Other causes—Enemy action	Nil	Nil
	(d) Average Daily Number open during the year:—		
	(i) E.H.S. Casualty Beds	84	84
	(ii) Other Beds	32	32
	(e) Average Daily Number occupied during the year:—		
	(i) E.H.S. Casualty Beds occupied by Casualties	5.6	4.3
	(ii) Other Beds	54.4	46.5
2.	Number of In-Patients in the Hospital at beginning of the year	52	40
3.	" " admitted during the year	1,383	1,347
4.	" " in the Hospital at the end of the year	57	52
5.	Average number of days each Patient was resident	15.9	13.9
	Ascertained by dividing the total of daily counts (21,917) by the number of Patients treated to a conclusion, i.e. (2)+(3)–(4).		
6.	Number of Patients admitted and discharged during the year who were resident for—		
	(i) only one day	226	414
	(ii) two and three days.. .. .	169	80

II.—OUT-PATIENTS.		Numbers in	Numbers in
(A)—Numbers.		1943.	previous year.
1.	Total number of new Out-Patients	5,428	4,067
2.	Total number of Out-Patient attendances	32,044	28,394
	a) Number of Casualty Patients included in No. 1 above	1,467	856

ANGAS HOME RECOVERY HOSPITAL, CUDHAM.

Statistics for Year to 31st December, 1943, compared with those of the previous year.

I.—IN-PATIENTS.		Numbers in	Numbers in
(A)—Number of Beds and In-Patients.		1943.	previous year.
1.	BEDS.—(a) Complement	41	41
	(b) Average Daily Complement during the year	41	41
	(c) Average Daily Number closed during the year owing to:—		
	(i) Rebuilding or Extension Schemes	Nil	Nil
	(ii) Repairs, Redecoration, Cleaning or Infection	Nil	Nil
	(iii) Other causes—Enemy action	Nil	Nil
	(d) Average Daily Number open during the year:—		
	(i) E.H.S. Casualty Beds	33.6	} 41
	(ii) Other Beds	7.4	
	(e) Average Daily Number occupied during the year:—		
	(i) E.H.S. Beds occupied by Casualties	21.1	17.8
	(ii) Other Beds	6.7	6.0
2.	Number of In-Patients in the Hospital at beginning of the year	22	16
3.	" " admitted during the year	492	429
4.	" " in the Hospital at the end of the year	20	22
5.	Average number of days each Patient was resident	20.6	20.6
	Ascertained by dividing the total of daily counts (10,159) by the number of Patients treated to a conclusion, i.e. (2)+(3)–(4).		
6.	Number of Patients admitted and discharged during the year who were resident for—		
	(i) only one day	Nil	Nil
	(ii) two and three days.. .. .	Nil	Nil

HOSPITAL FOR TROPICAL DISEASES CONSULTATIVE OUT-PATIENT CLINIC.

II.—OUT-PATIENTS.		Numbers in	Numbers in
(A)—Numbers.		1943.	previous year.
1.	Total number of new Out-Patients	256	242
2.	Total number of Out-Patient attendances	546	441

KING GEORGE'S SANATORIUM FOR SAILORS.
BRAMSHOTT PLACE, LIPHOOK, HANTS.

Statistics for Year to 31st December, 1943, compared with those of the previous year.

I.—IN-PATIENTS.

(A)—Number of Beds and In-Patients.	Numbers in 1943.	Numbers in previous year.
1. BEDS.—(a) Complement	80	80
(b) Average Daily Complement during the year	80	80
(c) Average Daily Number closed during the year, owing to:—		
(i) Rebuilding or Extension Schemes	Nil	Nil
(ii) Repairs, Redecoration, Cleaning or Infection	Nil	Nil
(iii) Other causes	Nil	Nil
(d) Average Daily Number open during the year	80	80
(e) Average Daily Number occupied during the year	76.7	72.9
2. Number of In-Patients in the Hospital at beginning of year	69	74
3. " " " Admitted during the year	79	83
4. " " " in the Hospital at the end of the year	76	69
5. Average number of days each Patient was resident	388.6	302.3
Ascertained by dividing the total of daily counts (viz., 27,979) by the number of Patients treated to a conclusion, i.e. (2)+(3)–(4).		
6. Number of Patients admitted and discharged during the period who were resident for—(a) only one day	Nil	Nil
(b) two and three days	Nil	Nil

(B)—EXPENDITURE on In-Patients apart from that on Out-Patients ; Average Cost of each In-Patient per week ; and Average Cost of each In-Patient.

	1943.			Previous year.		
	Expenditure on In-Patients (Pounds only) £	* Average Cost of each In-Patient per week £ s. d.	† Average Total Cost of each In-Patient £ s. d.	* Average Cost of each In-Patient per week £ s. d.	† Average Total Cost of each In-Patient £ s. d.	
1. Provisions	3,770	19 0	52 7 3	18 7	40 2 9	
2. Surgery and Dispensary	546	2 9	7 11 8	2 11	6 6 4	
3. Domestic	2,276	11 5	31 12 3	10 10	23 8 5	
4. Salaries and Wages (Maintenance)	6,690	1 13 9	92 18 4	1 13 10	73 1 2	
5. Miscellaneous	744	3 9	10 6 8	3 9	8 1 4	
6. Administration	584	3 0	8 2 2	3 2	6 15 8	
Statistical Cost	14,610	3 13 8	202 18 4	3 13 1	157 15 8	
7. Establishment: Renewals and Repairs	422	2 2	5 17 2	1 2	2 8 10	
8. Finance	308	1 7	4 5 7	1 4	3 0 11	
TOTAL COST	£15,340	£3 17 5	£213 1 1	£3 15 7	£163 5 5	

* Average Cost per week found by dividing the amounts of Expenditure shown against each heading and total by the average number of In-Patients resident daily (No. 1 (e) in A above) and dividing by the number of weeks in the period (viz., 52 $\frac{1}{7}$).

† Average cost per In-Patient found by dividing the amounts of Expenditure shown against each heading and total by the number of In-Patients treated to a conclusion during the period (Nos. 2+3–4 in A above).

Seamen's Hospital

INCOME AND EXPENDITURE ACCOUNT

INCOME.

ORDINARY—

i. Voluntary Gifts—

	£	s.	d.	£	s.	d.	£	s.	d.
1. Subscriptions, Donations, etc.—									
Annual Subscriptions	12,220	13	10						
Donations	16,336	16	0						
Box Collections	461	14	6						
				29,019	4	4			
Entertainments—									
Gross Receipts	Nil								
Less Expenses	Nil								
							Nil		
Gifts in Kind	59	3	3						
Workmen's Collections	224	9	10						
							283	13	1
2. Central Funds—									
King Edward's Hospital Fund	1,750	0	0						
<i>(Including all branches except Tilbury Seamen's Hospital)</i>									
Hospital Sunday Fund	660	0	0						
King George's Fund for Sailors	6,050	0	0						
				8,460	0	0			
							37,762	17	5

ii. Receipts on Account of Services Rendered—

1. Contributions on Account of Services to Patients—									
(a) From Patients and their Societies									
Contributory Schemes—									
Hospital Saturday Fund	113	8	6						
Hospital Saving Association	6,423	11	0						
Approved Societies	—	—	—						
Other Sources	—	—	—						
				14,840	4	7			
(b) From Public Authorities—									
Phthisical	9,339	7	7						
Ministry of Health (L.C.C.) V.D.	4,625	0	0						
Government Emergency Hospital Scheme	22,971	6	10						
							51,775	19	0
(c) State Grant towards Rushcliffe Rates of Salaries for Nurses									
							928	3	7
2. Fees—									
Nurses' and Probationers' Fees							Nil		
Other Fees							Nil		
							52,704	2	7
3. Other Receipts									
							Nil		Nil

iii. Invested Property—

Interest, Dividends—Endowments	10,400	8	1						
Less Dividends for year transferred to Hospital for Tropical Diseases Fund ..	2,656	1	7						
				7,744	6	6			
The Late Viscount Devonport Trust Fund	3,495	0	0						
General Purposes	2,065	12	2						
							13,304	18	8
Rents	1,449	17	10						
Proceeds, Pig Accounts	164	7	10						
							1,614	5	8
							14,919	4	4
							£105,386	4	4

Society.

for the Year to the 31st December, 1943. (see also Legacies Account pp. 24 & 25).

EXPENDITURE.**ORDINARY—**

	£	s.	d.
i. Provisions	11,273	18	11
ii. Surgery and Dispensary	9,105	10	10
iii. Domestic	14,399	17	9
iv. Salaries and Wages (Maintenance)	36,836	13	8
v. Miscellaneous	3,615	10	3
vi. Administration	4,635	10	8
vii. Establishment	2,849	0	9
viii. Finance	2,384	8	3
Total Ordinary Expenditure	85,100	11	1

EXTRAORDINARY—

Nil

TOTAL EXPENDITURE £85,100 11 1

Balance, being excess of Total Income over Total Expenditure for
the year carried to Balance Sheet 20,285 13 3

£105,386 4 4

Seamen's Hospital BALANCE SHEET

(See also Balance Sheet of Angas Home
Presented in accordance with the Revised Uniform System of Hospital Accounts, as adopted by King Edward's

LIABILITIES.

	£	s.	d.	£	s.	d.	£	s.	d.
1. Sundry Creditors—									
1. General Fund							5,915	14	9
2. Loans to Hospital—									
General Fund—									
London School of Clinical Medicine				1,434	9	4			
From Dreadnought Restoration Fund				1,269	6	2			
From Hospital for Tropical Diseases Fund (New Hospital)				2,974	12	6			
From Dreadnought Hospital Build- ings and Equipment Fund to General Fund				2,624	1	7			
Buildings and Equipment—									
Albert Dock Hospital from General Fund				8,458	11	9			
Hospital for Tropical Diseases (New Hospital)				52	10	0			
							16,813	11	4
3. Capital Accounts—									
(A) Hospital Endowments , as per last Balance Sheet				278,896	6	1			
Add 1943 Receipts for Endowment				6,284	19	2			
,, Accretion of Capital				7,249	4	2			
							292,430	9	5
(B) Special Funds—									
Samaritan Fund, as per last Balance Sheet				3,807	1	8			
" Duncan " Prize Fund, as per last Balance Sheet				100	0	0			
" Bernhard Baron " Prize Fund, as per last Balance Sheet				505	4	2			
" Matthew Robert Quin " Bequest— H.T.D. Research Fund, as per last Balance Sheet				3,582	18	3			
Nurses' Home and Recreation Fund as per last Balance Sheet				406	0	8			
							8,401	4	9
(C) Buildings and Equipment—									
(a) Dreadnought Hospital, as per last Balance Sheet	77,294	8	3						
Add Capital Receipts, 1943	6	8	0						
,, Transfer from General Fund	120	0	0						
	77,420	16	3						
Less Depreciation on Motor Vehicles		89	19	8					
				77,330	16	7			
(b) Dreadnought Restoration Fund, as per last Balance Sheet	19,284	18	3						
Additions, 1943	6,993	15	4						
				26,278	13	7			
(c) Hospital for Tropical Diseases, as per last Balance Sheet				104,237	12	9			
Carried forward	£207,847	2	11	300,831	14	2	22,729	6	1

Society.

as at 31st December, 1943.

Recovery Hospital, pp. 30 and 31.)

Hospital Fund for London, The Metropolitan Hospital Sunday Fund, The Hospital Saturday Fund.

ASSETS.

	£	s.	d.	£	s.	d.	£	s.	d.
1. Cash at Bank and in Hand—									
On Account of—									
(A) Endowments							203	3	6
(B) Special Funds—									
Samaritan Fund				956	14	5			
" Duncan " Prize Fund				47	18	7			
" Bernhard Baron " Prize Fund				81	14	10			
Patient's Money				95	14	8			
The late H. R. Prentice Fund				38	3	7			
Nurses' Home and Recreation Fund				23	15	5			
" Matthew Robert Quin " Bequest— H.T.D. Research Fund				1,209	6	5			
							2,453	7	11
(C) General Fund							9,392	5	4
2. Stocks of unissued Stores on Hand							10,068	6	2
3. Sundry Debtors—									
General Fund				19,263	17	9			
" Angas Home Recovery Hospital				1,829	11	0			
							21,093	8	9
4. Internal Loans—									
From Dreadnought Restoration Fund to General Fund				1,269	6	2			
From Hospital for Tropical Diseases Fund to General Fund (New Hospital)				2,974	12	6			
From Dreadnought Hospital Buildings and Equipment Fund to General Fund				2,624	1	7			
From General Fund to Buildings and Equipment, Albert Dock Hospital				8,458	11	9			
From General Fund Buildings and Equipment to Hospital for Tropical Diseases (New Hospital)				52	10	0			
							15,379	2	0
5. Investments as detailed—									
(A) Hospital Endowments, as per last Balance Sheet	279,059	7	2						
Added since	13,167	18	9						
				292,227	5	11			
(B) Special Funds—									
Samaritan Fund	3,807	1	8						
" Duncan " Prize Fund	100	0	0						
" Bernhard Baron " Prize Fund	505	4	2						
Matthew Robert Quin Bequest— H.T.D. Research Fund	3,582	18	3						
Nurses' Home and Recreation Fund	406	0	8						
				8,401	4	9			
(C) Buildings and Equipment—									
Dreadnought Restoration Fund (Market Value £23,205)				23,041	9	3			
Carried forward				£323,669	19	11	58,589	13	8

Seamen's Hospital
BALANCE SHEET—*contd.*

LIABILITIES.

	£	s.	d.	£	s.	d.	£	s.	d.	£	s.	d.
<i>Brought forward</i>				207,847	2	11	300,831	14	2	22,729	6	1
(c) Buildings and Equipment—												
(d) King George's Sanatorium for Sailors, as per last Balance Sheet				81,131	18	1						
(e) Tilbury Hospital, as per last Balance Sheet				56,870	14	6						
(f) Albert Dock Hospital, as per last Balance Sheet	79,516	13	3									
<i>Add Capital Receipts, 1943</i>	30	18	11									
				79,547	12	2						
(g) Queen Alexandra Memorial Hospital, Marseilles, as per last Balance Sheet				1,065	13	5						
(h) Radium Fund, as per last Balance Sheet				355	8	2						
(i) Poultry Farm, as per last Balance Sheet				87	10	4						
							426,905	19	7			
(d) General Fund, as per last Balance Sheet				249,236	5	4						
<i>Add Legacy allocated in 1942 to Devonport Pathological Research Fund, now included in this Fund</i>				490	8	4						
				249,726	13	8						
<i>Less Adjustment in Amounts recovered from War Damage Commission and Ministry of Health in respect of Expenditure charged in Income and Expenditure Account, 1941</i>					83	18	0					
				249,642	15	8						
<i>Add Excess of Income over Expenditure for the year</i>				20,285	13	3						
<i>Add Legacies for the year</i>				5,287	4	7						
				275,215	13	6						
<i>Less Transfer to Capital Account, Lands, Buildings and Equipment</i>	120	0	0									
<i>Income Tax adjustment</i>	114	6	6									
				234	6	6						
				274,981	7	0						
<i>Less Transfer to Reserve for Renewals and Repairs in respect of the four years 1940-43</i>				4,209	0	0						
				270,772	7	0						
4. Reserve for Renewals and Repairs, transfer from General Fund in respect of the four years 1940-43				4,209	0	0						
				274,981	7	0						
Hospital for Tropical Diseases Fund (New Hospital), as per last Balance Sheet	11,693	7	1									
<i>Add Receipts, 1943</i>	3,341	0	7									
				15,034	7	8						
							290,015	14	8			
							1,017,753	8	5			
<i>Carried forward</i>							£1,040,482	14	6			

Society,

as at 31st December 1943.

ASSETS.

	£	s.	d.	£	s.	d.	£	s.	d.
<i>Brought forward</i>							323,669	19	11 58,589 13 8
5. (D) General Fund—									
(Market Value, £187,079) ..	183,289	16	4						
Properties	56,555	18	2						
Hospital for Tropical Diseases (New Hospital) (Market Value, £12,076)	12,007	5	2						
							251,852	19	8
(E) Suspense Fund—									
Zunz Bequest							16,440	0	0
									591,962 19 7
6. Lands, Buildings and Equipment of the Society—(Freehold and Leasehold).									
The cost of the appliances of the Dreadnought Hospital prior to 1st January, 1907, also the Buildings of the Tilbury Hospital prior to 1st January, 1924, also the Buildings of Queen Alexandra Memorial Hospital, Marseilles, prior to 1st January, 1928, are not included in this Balance Sheet. This also applies to the Devonport Nurses' Home, Pathological Laboratories and Devonport House, provided in response to the late Viscount Devonport's Special Appeal.									
(A) Dreadnought Hospital—									
Expenditure from 1st January, 1908, to 31st December, 1942 ..	74,676	14	8						
<i>Less</i> Depreciation on Motor Vehicles	89	19	8						
	74,586	15	0						
Expenditure during year ..	120	0	0				74,706	15	0
Dreadnought Restoration Fund, as per last Balance Sheet ..	2,294	15	6						
Expenditure during year ..	14	7	6				2,309	3	0
Radium Fund							355	8	2
(B) Hospital for Tropical Diseases—									
Expenditure from 1st January, 1919, to 31st December, 1943							104,237	12	9
(C) Hospital for Tropical Diseases (New Hospital)							52	10	0
<i>Carried forward</i>							£181,661	8	11 650,552 13 3

Seamen's Hospital
BALANCE SHEET—*contd.*

LIABILITIES.

	£	s.	d.	£	s.	d.	£	s.	d.
<i>Brought forward</i>							1,040,482	14	6
(E) Suspense Fund—									
Zunz Bequest							16,440	0	0
5. Unexpended Balances of Special Funds—									
Samaritan Fund				956	14	5			
Patients' Money				95	14	8			
" Duncan " Prize Fund				47	18	7			
" Bernhard Baron " Prize Fund				81	14	10			
The late H. R. Prentice Fund				38	3	7			
Nurses' Home and Recreation Fund					23	15	5		
Matthew Robert Quin Bequest— H.T.D. Research Fund				1,209	6	5			
							2,453	7	11
£1,059,376 2 5									

We have audited the above Balance Sheet and the foregoing Income and Expenditure We have verified the Investments and Bank Balances. To the best of our knowledge and belief Funds and as modified by the instructions dated December, 1940, of King Edward's Hospital Reserve for Renewals and Repairs, where appropriate, have been followed in the preparation damage suffered.

3, Great Winchester Street,
London, E.C.2.

12th April, 1944.

LEGACIES

	£	s.	d.
To Free Legacies Received (see p. 32)	5,287	4	7
			£5,287 4 7

Society,

as at 31st December, 1943.

ASSETS.

	£	s.	d.	£	s.	d.	£	s.	d.
<i>Brought forward</i>	181,661	8	11	650,552	13	3			
* (D) King George's Sanatorium for Sailors— Expenditure from 1st January, 1919, to 31st December, 1943 *(There is a charge of £3,840 outstanding in favour of the Ministry of Health on this asset in respect of contingent grant made by the Ministry in 1921.)	81,131	18	1						
(E) Albert Dock Hospital— Expenditure from 1st January, 1935, to 31st December, 1943	88,006	3	11						
(F) Tilbury Hospital— Expenditure from 1st January, 1924, to 31st December, 1943	56,870	14	6						
(G) Queen Alexandra Memorial Hospital, Marseilles, France— Expenditure from 1st January, 1938, to 31st December, 1943	1,065	13	5						
	408,735	18	10						
(H) Poultry Farm— Expenditure from 1st January, 1928, to 31st December, 1943	87	10	4				408,823	9	2
							<u>£1,059,376</u>	<u>2</u>	<u>5</u>

Account, and having compared them with the Books of the Hospital we find them to be correct. the regulations of the Revised Uniform System of Hospital Accounts as adopted by the Central Fund relating to Free Legacies, and those dated 23rd March, 1943, relating to the treatment of of the Accounts. No adjustment has been made in the above Balance Sheet in respect of war

GUNDRY, COLE & CO.
Chartered Accountants.

ACCOUNT.

	£	s.	d.
By Transfer to General Fund Capital Account (see p. 22)	5,287	4	7
	<u>£5,287</u>	<u>4</u>	<u>7</u>

EXPENDITURE

ORDINARY	DREADNOUGHT	ALBERT DOCK	
	HOSPITAL	HOSPITAL	
	£	s.	d.
I.—Provisions	2,001	9	8
II.—Surgery and Dispensary.			
1. Drugs, Chemicals, Disinfectants, etc.	772	10	2
2. Dressings, Bandages, etc.	164	7	11
3. Instruments and Appliances	459	12	8
4. Wines and Spirits	18	1	3
5. Salaries and Wages of Dispensary Staff	578	12	5
6. Sundries	151	14	6
7. Pathology	1,300	0	0
	£3,444	18	11
III.—Domestic.			
1. Renewals and Repairs of Furniture, etc.	198	4	4
2. Laundry	846	11	10
3. Cleaning and Chandlery	315	11	5
4. Water	97	17	9
5. Fuel and Lighting	2,666	17	3
6. Uniforms	192	13	3
7. Sundries	56	12	9
	£4,374	8	7
IV.—Salaries and Wages (Maintenance).			
1. Medical	1,493	2	7
2. Nursing	3,001	5	8
3. Other Officers and Employees	7,723	12	11
4. Pensions	905	6	9
	£13,123	7	11
V.—Miscellaneous.			
1. Printing, Stationery, Postages, Telephones	277	15	11
2. Advertisements	37	14	0
3. Insurance of Buildings, Equipment, etc.—			
(i) General	199	18	11
(ii) War Damage Contribution	269	14	0
4. Garden	253	18	10
5. Sundries	88	19	10
6. Conveyance of Patients	129	11	10
	£1,257	13	4
VI.—Administration.			
1. Salaries	1,425	13	3
2. Pensions	704	3	11
3. Printing, Stationery, Postages, Telephones	177	10	9
4. Advertisements	15	2	8
5. Law Charges	2	15	4
6. Auditors' Fee	49	0	0
7. Sundries	118	7	8
	£2,492	13	7
VII.—Establishment.			
1. Renewals and Repairs to Buildings and Plant	1,040	3	9
2. A.R.P. Charges	18	8	9
	£1,058	12	6
VIII.—Finance.			
1. Interest			
2. Appeals	680	9	4
3. Rent	151	14	10
4. Rates and Taxes	580	4	5
	£1,412	8	7
Grand Totals	£20,165	13	1
	£21,606	4	4

ABSTRACTS, 1943.

TILBURY HOSPITAL			KING GEORGE'S SANATORIUM FOR SAILORS			HOSPITAL FOR TROPICAL DISEASES			TOTAL FOR 1943		
£	s.	d.	£	s.	d.	£	s.	d.	£	s.	d.
2,796	15	7	3,769	10	11	11,273	18	11
944	7	0	222	9	3	5	8	..	2,986	11	7
521	3	6	85	10	1	1,279	2	2
900	8	7	193	18	5	2,161	15	6
19	4	..	2	1	0	29	1	4
226	6	3	1,053	18	1
46	7	11	17	4	0	270	2	2
..	25	0	0	1,325	0	0
£2,639	12	7	£546	2	9	5	8	..	£9,105	10	10
265	11	8	448	17	11	2	13	1	1,198	13	8
1,123	5	8	492	4	5	3,119	13	5
46	8	3	81	12	8	556	13	1
229	0	7	2	18	2	402	9	8
1,862	16	2	1,166	14	6	8,597	5	2
85	15	1	42	12	8	351	13	10
30	3	0	41	9	7	173	8	11
£3,643	0	5	£2,276	9	11	£2	13	1	£14,399	17	9
943	12	0	1,700	11	9	300	0	0	5,688	13	6
2,885	2	6	2,377	16	11	11,301	5	4
2,788	12	7	2,444	14	9	13	0	0	18,199	7	6
150	0	0	166	13	4	253	7	3	1,647	7	4
£6,767	7	1	£6,689	16	9	£566	7	3	£36,836	13	8
228	14	4	84	2	7	1	17	4	846	10	7
117	18	6	99	0	3	295	12	2
57	2	8	76	0	4	1	5	0	433	7	2
100	15	0	55	16	0	19	7	6	561	17	6
188	9	6	108	1	0	581	9	2
23	8	6	82	1	11	3	2	..	243	0	3
113	15	8	238	13	3	653	13	5
£830	4	2	£743	15	4	£22	13	0	£3,615	10	3
497	12	6	344	12	6	2,847	16	9
58	13	9	117	7	3	1,056	5	9
72	6	5	50	12	10	401	3	5
2	5	3	12	1	5	35	4	0
4	8	..	9	2	4	3	0
5	2	8	8	3	4	75	12	0
10	17	10	50	12	4	215	5	9
£647	3	1	£583	18	10	£4,635	10	8
677	0	2	421	16	8	7	8	0	2,830	12	0
..	18	8	9
£677	0	2	£421	16	8	£7	8	0	£2,849	0	9
67	14	7	113	8	3	1,031	14	5
186	3	0	195	2	7	12	0	0	350	17	10
122	4	0	1,001	16	0
£376	1	7	£308	10	10	£12	0	0	£2,384	8	3
£18,377	4	8	£15,340	2	0	£611	7	0	£85,100	11	1

Seamen's Hospital
ANGAS HOME RECOVERY
INCOME AND EXPENDITURE ACCOUNT,

INCOME

ORDINARY—

	£	s.	d.	£	s.	d.
1. Voluntary Gifts—						
1. Subscriptions, Donations, etc.—						
Annual Subscriptions.....	86	5	6			
Donations.....	313	16	6			
Box Collections	Nil					
Entertainments—Gross Receipts	Nil			400	2	0
<i>Less Expenses</i>	Nil					
Gifts in kind.....	3	3	0	Nil		
Workmen's Collections	Nil					
	-----			3	3	0
				-----	403	5 0
2. Central Funds—						
King Edward's Hospital Fund				Nil		
(The work of the "Angas" Home Recovery Hospital is taken into account in the grant to the parent hospital)						
King George's Fund for Sailors.....				700	0	0
				-----	700	0 0
ii. Receipts on Account of Services rendered.						
1. Contributions on Account of Services to Patients—						
(a) From Patients and their Societies—				Nil		
Contributory Schemes—						
Hospital Saturday Fund.....	Nil					
Hospital Saving Association	Nil					
Approved Societies	Nil					
Other Sources	598	6	0			
	-----			598	6	0
(b) From Public Authorities—						
Government Emergency Hospital Scheme	634	0	0			
	-----			1,232	6	0
(c) State Grant towards Rushcliffe Rates of Salaries for Nurses				70	0	0
2. Fees.				Nil		
3. Other Receipts				Nil		
				-----	1,302	6 0
iii. Invested Property.						
Interest, Dividends, etc.—Endowments	576	0	6			
" " " General Purposes	174	3	6			
	-----			750	4	0
Rent	78	14	3			
Proceeds of Pig and Poultry Account	12	10	0			
	-----			91	4	3
				-----	841	8 3
				-----	3,246	19 3
				-----	1,616	6 1
Balance being excess of Total Expenditure over Total Income for the year.....					-----	-----
					-----	£4,863 5 4

Society.

HOSPITAL, CUDHAM, KENT.

for the Year to the 31st December, 1943.

EXPENDITURE.

ORDINARY—

	£	s.	d.	£	s.	d.
i.—Provisions				1,313	19	3
ii.—Surgery and Dispensary.						
(1) Drugs, Chemicals, Disinfectants, etc.	122	12	2			
(2) Dressings and Bandages	3	3	6			
(3) Instruments and Appliances	12	15	2			
(4) Wines and Spirits	1	13	0			
(5) Salaries and Wages of Dispensing Staff	Nil					
(6) Sundries	1	9	4			
				141	13	2
iii.—Domestic.						
(1) Renewal and Repair of Furniture, Bedding and Crockery ..	155	4	11			
(2) Laundry	276	6	7			
(3) Cleaning and Chandlery	24	1	8			
(4) Water	14	4	7			
(5) Fuel and Lighting	228	15	6			
(6) Uniforms	21	6	3			
(7) Sundries	18	0	0			
				737	19	6
iv.—Salaries and Wages.						
(1) Medical	81	16	9			
(2) Nursing	887	6	0			
(3) Other Officers and Employees	315	12	8			
(4) Pensions	100	0	0			
				1,384	15	5
v.—Miscellaneous.						
(1) Printing, Stationery, Postages and Telephones	27	9	11			
(2) Advertisements	11	16	4			
(3) Insurance of Buildings, Equipment and Stores	46	5	7			
(4) Garden	215	13	1			
(5) Sundries	37	17	11			
(6) Conveyance of Patients	260	1	1			
				599	3	11
vi.—Administration.						
(1) Salaries	239	0	0			
(2) Pensions	Nil					
(3) Printing, Stationery, Postages and Telephones	1	7	6			
(4) Advertisements	Nil					
(5) Law Charges	Nil					
(6) Auditors' Fee	7	7	0			
(7) Sundries	2	10	0			
				250	4	6
vii.—Establishment.						
(1) Renewals and Repairs				221	7	4
viii.—Finance.						
(1) Interest	Nil					
(2) Appeals	113	8	3			
(3) Rent	Nil					
(4) Rates and Taxes	95	9	0			
				208	17	3
Total Ordinary Expenditure				4,858	0	4

EXTRAORDINARY—

(1) Contributions to other Institutions— Cudham Parish Church				5	5	0
				<u>£4,863</u>	<u>5</u>	<u>4</u>

Seamen's Hospital
ANGAS HOME RECOVERY
BALANCE SHEET,

Presented in accordance with the Revised Uniform System of Hospital Accounts, as adopted by King Edward's

LIABILITIES.

	£	s. d.	£	s. d.	£	s. d.
1. Sundry Creditors—						
1. General Fund.....	213	2	4			
" " Seamen's Hospital Society	1,829	11	0			
	2,042			13	4	
2. Buildings and Equipment.				Nil		
	2,042			13	4	
 2. Loans to Convalescent Home—						
Buildings and Equipment from General Fund ..					794	13 10
 3. Capital Accounts—						
(a) Endowments, as per last Balance Sheet			14,740	10	5	
(b) Special Funds				Nil		
(c) Buildings and Equipment, as per last Balance Sheet			13,961	14	2	
(d) General Fund, as per last Balance Sheet	6,680	10	3			
Less Excess of Total Expenditure over Total Income for the Year.....	1,616	6	1			
	5,064			4	2	
	33,766			8	9	
4. Unexpended Balances of Special Funds.....				Nil		
	£36,603			15	11	

We have audited the above Balance Sheet and the foregoing Income and Expenditure We have verified the Investments and Bank Balances. To the best of our knowledge and belief Funds and as modified by the instructions dated December, 1940, of King Edward's Hospital Reserve for Renewals and Repairs, where appropriate, have been followed in the preparation

3, Great Winchester Street,
 London, E.C.2.
 12th April, 1944.

Society.

HOSPITAL, CUDHAM, KENT.*as at 31st December, 1943.**Hospital Fund for London, The Metropolitan Hospital Sunday Fund, The Hospital Saturday Fund.***ASSETS.**

	£ s. d.	£ s. d.	£ s. d.
1. Cash at Bank and in Hand.			
On Account of—			
(a) Endowments			Nil
(b) Special Funds			Nil
(c) Buildings and Equipment			Nil
(d) General Funds			1,392 16 2
2. Stocks of unissued Stores			186 2 8
3. Sundry Debtors			98 0 3
4. Internal Loans.			
From General Fund to Buildings and Equipment			794 13 10
5. Investments.			
(a) Endowments as per last Balance Sheet	14,740 10 5		
(b) Special Funds	Nil		
(c) Buildings and Equipment	Nil		
(d) General Purposes (Market value £5,052)	4,635 4 7		
	—————		19,375 15 0
6. Lands, Buildings and Equipment— as per last Balance Sheet	14,481 10 8		
Expenditure during 1943 on account of new Extension	274 17 4		
	—————		14,756 8 0
			—————
			£36,603 15 11
			—————

Account, and having compared them with the Books of the Hospital we find them to be correct. the regulations of the Revised Uniform System of Hospital Accounts as adopted by the Central Fund relating to Free Legacies, and those dated 23rd March, 1943, relating to the treatment of the Accounts.

GUNDRY, COLE & CO.,

Chartered Accountants.

SAMARITAN FUND.

Cash Account for the Year ended 31st December, 1943.

RECEIPTS.				EXPENDITURE.			
Dr.	£	s.	d.	Cr.	£	s.	d.
1st January, 1943—				Expenses incurred during the year in connection with monetary assistance rendered to distressed Seamen on leaving Hospital, in payment of railway fares, in purchase of surgical appliances and clothing, in payment for convalescent treatment, etc.			
Current Account	255	19	7				
Deposit Account	500	0	0				
			755 19 7	Cash in hand of Seamen's Hospital Society—			
Dividends—				Current Account	£450	9	5
Luscombe Meml. Fund	2	3	8	P.O. Deposit Account	£506	5	0
W. Adams Meml. Fund	1	17	10				956 14 5
George Sturge Fund	27	15	2				
Guthrie Rankin Fund	37	19	2				
Julia Thomas Fund	85	1	8				
Comforts Fund	1	11	8				
			156 9 2				
Interest on Deposit			1 11 10				
Donations, etc.			85 13 9				
Donations towards cost of Appliances			262 7 1				
			<u>£1,262 1 5</u>				<u>£1,262 1 5</u>

THE "BERNHARD BARON" PRIZE

(DREADNOUGHT HOSPITAL.)

	£	s.	d.	£	s.	d.
Balance brought forward	89	5	11			
Income from invested funds	18	8	2			
				107	14	1
Expenditure in 1943				25	19	3
Balance in hand				<u>£81</u>	<u>14</u>	<u>10</u>

"MATTHEW ROBERT QUIN" BEQUEST

(TROPICAL DISEASES RESEARCH FUND.)

	£	s.	d.
Balance brought forward	865	13	3
Income from donations and invested funds	343	13	2
Balance in hand	<u>£1,209</u>	<u>6</u>	<u>5</u>

THE "DUNCAN" MEDAL PRIZE

(HOSPITAL FOR TROPICAL DISEASES.)

	£	s.	d.
Balance brought forward	43	16	7
Income from invested funds	4	2	0
Balance in hand	<u>£47</u>	<u>18</u>	<u>7</u>

LEGACIES FOR GENERAL PURPOSES—1943.

	£	s.	d.		£	s.	d.
George Whitley Hayes (and tax)	609	16	0	Brought forward	3,991	2	4
Mrs. C. Mummery	50	0	0	Robert M. Stevenson	200	0	0
Mrs. Louisa Hotchkiss	10	10	0	Miss Marie F. Faulder	45	0	0
Dame Lucy Blake	2,250	0	0	Miss Bertha Foley	450	0	0
Exors. of Miss Nancy Sourbutts	25	0	0	Mrs. Ada C. Trumble (further instalment)	44	12	11
Frank E. Wintle	100	0	0	George Gunton Browne	100	0	0
Alfred G. White (further instalment)	152	7	11	Miss Blonde Wilkinson	337	11	5
Walter G. Shave	30	6	11	Thomas Cryer	100	0	0
Admiral Oliver Backhouse	38	1	6	Commander F. W. Chaine (tax)	18	17	11
Exors. of Thomas Mason	500	0	0				
Mrs. Ada Gadsdon	225	0	0				
Carried forward	3,991	2	4		<u>£5,287</u>	<u>4</u>	<u>7</u>

SCHEDULE OF INVESTMENTS, 31st DECEMBER, 1943.

A. FOR SPECIAL PURPOSES.

£	s.	d.		Income received in 1943.		Value when acquired.	
				£	s. d.	£	s. d.
(a) SAMARITAN FUND.							
3½% Conversion Loan, 1961.							
2,431	2	10	"Julia Thomas" Fund	85	1 8	1,869	11 8
3½% War Loan, 1952.							
62	10	3	"John H. Luscombe" Memorial Fund	2	3 8	78	17 5
54	3	1	"Walter Adams" Memorial Fund	1	17 10	64	1 0
1,084	13	11	"Guthrie Rankin" Fund	37	19 2	1,000	0 0
4% L. & N.E. Railway 1st Pref. Stock.							
694	0	0	"George Sturge" Fund	27	15 2	744	11 7
3% Defence Bonds 2nd Issue.							
50	0	0	"Comforts Fund"	1	11 8	50	0 0
				£156	9 2	£3,807	1 8
(b) DUNCAN MEDAL FUND.							
102	13	0	4% Dominion of New Zealand Stock, 1943-63	£4	2 0	£100	0 0
(c) BERNHARD BARON PRIZE FUND.							
525	19	9	Commonwealth of Australia 3½% Registered Stock, 1961-66	£18	8 2	£505	4 2
(d) MATTHEW ROBERT QUIN RESEARCH FUND.							
748	13	9	3½% Conversion Loan, 1961	26	4 0	660	16 6
3,500	0	0	Great Western Railway 4% Debenture Stock	140	0 0	2,922	1 9
				£166	4 0	£3,582	18 3
(e) SUSPENSE FUND.							
3½% War Loan, 1952.							
16,000	0	0	"Annie Zunz" Fund, 1937	£560	0 0	£16,440	0 0
(f) HOSPITAL FOR TROPICAL DISEASES FUND.							
5,000	0	0	2% Conversion Loan, 1943-45	100	0 0	5,000	0 0
2,000	0	0	2½% Conversion Loan, 1944-49	50	0 0	2,007	5 2
1,000	0	0	3% Savings Bonds, 1960-70	30	0 0	1,000	0 0
3,000	0	0	2½% National War Bonds, 1951-53 "A"	35	19 2	3,000	0 0
1,000	0	0	2½% National War Bonds, 1951-53 "A"	7	18 10	1,000	0 0
				£223	18 0	£12,007	5 2
(g) DREADNOUGHT HOSPITAL RESTORATION FUND.							
6,000	0	0	2% Conversion Loan, 1943-45	110	0 0	6,005	12 8
9,500	0	0	2½% Conversion Loan, 1944-49	237	10 0	9,535	16 7
2,000	0	0	3% Savings Bonds, 1960-70 "B"	28	15 4	2,000	0 0
1,000	0	0	2½% National War Bonds, 1951-53 "A"	7	18 10	1,000	0 0
1,000	0	0	3% Savings Bonds, 1960-70 "B"	1	11 2	1,000	0 0
2,000	0	0	3% Savings Bonds, 1960-70 "C"	—	—	2,000	0 0
1,500	0	0	3% Savings Bonds, 1960-70 "C"	—	—	1,500	0 0
				£385	15 4	£23,041	9 3
(h) NURSES HOME AND RECREATION FUND.							
432	4	1	3½% War Stock	£15	2 6	£406	0 8
(j) ENDOWMENTS.							
2½% Consols.							
500	0	0	"Maurice Frederick Arnold" Memorial Fund	12	10 0	270	10 0
811	10	8	Tilbury Town Silver Prize Band Cot, Tilbury	20	5 8	506	8 6
1,269	5	4	"Orsett Hundred" Bed Fund, Tilbury	31	14 8	1,010	14 2
391	15	4	"Theodore Pim" Bequest	9	15 8	316	13 4
1,640	14	5	"Hellenic Travellers' Club" Bed Fund, A.D.	16	0 4	506	5 9
148	9	3	"Edgar Figgiss" Bed	28	14 0	1,000	0 0
175	0	0	"Albert Thomas Cox" Bed	2	3 8	143	14 7
				£121	4 0	£3,754	6 4
<i>Carried forward</i>				£121	4 0	£3,754	6 4

			(j) ENDOWMENTS— <i>continued.</i>			Income received in 1943.			Value when acquired.		
£	s.	d.				£	s.	d.	£	s.	d.
			<i>Brought forward</i> ..			121	4	0	3,754	6	4
2% Conversion Stock, 1943-45.											
1,068	5	6	Duke of York Ward, K.G.S.	21	7	2	1,062	5	9
5,669	18	1	Inchcape Fund, K.G.S.	113	7	10	5,663	1	5
Local Loans 3% Stock.											
1,000	0	0	"Albert Thomas Cox" Bed	15	0	0	950	0	0
500	0	0	"Albert Thomas Box" Bed	7	10	0	475	0	0
15,233	3	1	"Stanley Maude" Ward, H.T.D.	114	4	11	14,446	18	9
3½% Conversion Loan, 1961.											
13,988	4	0	"British Red Cross Society and Order of St. John of Jerusalem" Endowment Fund, H.T.D.	489	11	8	11,068	15	3
142	1	0	"Gulliver" Bed	4	19	4	142	8	6
1,630	0	0	"Minesweepers" Bed	57	1	0	1,000	0	0
127	15	9	"Seamen's Hospital Aid Committee" Bed, No. 3	4	9	6	100	0	0
4,074	15	9	"Moorsom Trust" Bed, D. & Til.	142	12	2	3,150	0	0
1,284	7	9	"Seamen's Hospital Aid Committee" Bed, No. 4	44	19	0	1,000	0	0
264	7	3	"Singhanee Indian Ward" Fund, Tilbury	9	5	0	208	14	9
1,226	8	3	"Burma Fund" Bed, No. 2, H.T.D.	42	18	6	1,000	0	0
1,295	8	0	"Seamen's Hospital Aid Committee" Bed, No. 8	45	6	8	1,000	0	0
1,532	2	2	"Arthur Francis" Bed	53	12	4	1,200	0	0
1,273	4	10	"Seamen's Hospital Aid Committee" Bed, No. 9	44	11	2	1,000	0	0
254	17	2	"Ernestine Marsh Dodson" Trust	8	12	4	200	0	0
1,299	16	0	"Millwall Football Club" Bed	45	9	10	1,000	0	0
1,315	2	4	"Members of Lloyds and Marine Insurance Companies and Shipowners" Bed, Q.A.M.H.	46	0	6	1,000	0	0
1,312	8	5	"Peter Coats" Bed, Q.A.M.H.	45	18	8	1,000	0	0
990	5	7	"Sir Arthur Clarke" Bed, K.G.S.	34	13	2	1,000	0	0
542	6	9	"Wireless" Bed "D"	18	19	6	538	7	10
49	17	0	"Robert Imeson" Fund	1	14	10	50	0	0
1,997	6	0	"Allen" Beds, No. 1 and No. 2	69	18	0	2,000	0	0
989	7	3	"Mrs. Charles Hollway" Bed, No. 1	34	12	6	1,000	0	0
989	7	3	"John Clement" Bed	34	12	6	1,000	0	0
5% Conversion Stock, 1944-64 "A" Inscribed (converted).											
1,040	18	11	"Star of India and Indian Empire" Bed, H.T.D.	26	0	5	—	—	—
991	4	4	"Starling" Bed	24	15	7	—	—	—
988	7	7	"Seamen's Hospital Aid Committee" Bed, No. 12	24	14	2	—	—	—
3% Funding Loan, 1959-69.											
51	19	6	"C. W. Simson" Trust	1	11	2	51	13	4
10,274	0	5	"British Red Cross Society and Order of St. John of Jerusalem" Endowment Fund, H.T.D.	308	4	4	10,212	16	3
574	5	6	"Gulliver" Bed	17	4	6	570	17	1
553	0	8	"Ladies Emergency Committee of the Navy League" Bed	16	11	8	549	14	9
567	13	1	"T. W. Smyth" Bed	17	0	6	564	5	5
570	14	9	"Reynolds" Bed	17	2	4	567	6	9
568	4	7	"Seamen's Hospital Aid Committee" Bed, No. 1	17	0	10	564	16	10
4% Funding Loan, 1960-90 (Converted).											
12,745	13	3	"Stanley Maude" Ward, H.T.D.	254	18	3	—	—	—
460	4	8	"St. Michael and St. George" Bed Fund, H.T.D.	9	4	1	—	—	—
920	9	8	"James Wootton" Bed	18	8	2	—	—	—
250	0	0	"Sir Ellie Kadoorie" Trust	5	0	0	—	—	—
3% National Defence Loan, 1954-58.											
996	3	0	"Lady Nancy Lucy" Bed	29	17	8	1,000	0	0
3% Savings Bonds, 1955-65.											
1,259	9	0	"Singhanee Indian" Ward, Til.	37	15	8	1,259	9	0
1,000	0	0	The "Hooper" Bed	30	0	0	1,000	0	0
5,700	0	0	"Inchcape" Fund, K.G.S.	171	0	0	5,700	0	0
1,400	0	0	The "Gertrude Young" Trust	42	0	0	1,400	0	0
350	0	0	"Thames" Bed, No. 4 Fund	10	10	0	350	0	0
1,000	0	0	"Sailing Ship" Bed Fund	30	0	0	1,003	13	6
3,291	19	11	"Annie Zunz" Fund, 1910	98	15	2	3,291	19	11
1,909	13	0	"Shanghai" Bed, K.G.S.	57	5	8	1,909	13	0
100	0	0	"Munro Watson" Bed	3	0	0	100	0	0
2,111	14	0	"Chamberlain" Fund, A.D.	31	13	6	2,130	7	7
			<i>Carried forward</i> ..			2,972	11	9	88,236	12	0

(j) ENDOWMENTS—continued.

£	s.	d.		Income received in 1943.			Value when acquired.		
				£	s.	d.	£	s.	d.
			<i>Brought forward</i>	2,972	11	9	88,236	12	0
3% Savings Bonds, 1960-70.									
1,000	0	0	"Patrick Manson" Bed	30	0	0	1,000	0	0
1,000	0	0	"David Hugh Manson-Bahr" Bed	30	0	0	1,000	0	0
1,025	16	3	"Roy Ravenscroft" Bed, A.D.	28	5	5	1,026	2	1
500	0	0	"Z. G. Michalinos" Cot	11	12	2	500	0	0
1,000	0	0	"G. W. Lindsay White" Bed No. 2	23	4	4	1,000	0	0
1,350	0	0	"Mrs. Alice Hall" Fund	24	14	5	1,350	0	0
1,041	13	4	"Law Memorial" Fund	20	6	8	1,041	13	4
1,048	9	10	"George Busk" Memorial Fund	20	9	3	1,048	9	10
11,836	12	2	"Inchcape" Fund, K.G.S.	191	3	4	11,836	12	2
1,026	14	0	"Mrs. C. Hollway" Bed, No. 2	12	2	11	1,026	18	0
1,341	7	9	"King George's Fund for Sailors," Til.	19	1	6	1,341	7	9
2,000	0	0	The "Arthur Redington" Beds, Til.	28	15	4	2,000	0	0
1,072	13	1	"Star of India and Indian Empire" Bed, H.T.D.	5	12	10	1,072	13	1
1,021	8	2	"Starling" Bed	5	7	6	1,021	8	2
1,018	9	9	"Seamen's Hospital Aid Committee" Bed, No. 12	5	7	2	1,018	9	9
521	3	3	"St. Michael and St. George" Bed Fund, H.T.D.	2	14	10	521	3	3
1,042	7	0	"James Wootton" Bed	5	9	8	1,042	7	0
283	1	6	"Sir Ellie Kadoorie" Trust	1	9	7	283	1	6
530	14	9	"St. Michael and St. George" Bed Fund, H.T.D.	2	15	10	530	14	9
1,026	19	6	"Eliza Mary England" Bed	5	8	0	1,026	19	6
1,278	10	3	"Members of Lloyd's Marine Insurance Companies and Shipowners" Bed	6	14	6	1,278	10	3
1,052	17	10	"Charles F. Torrey" Bed	5	7	4	1,052	17	10
982	9	11	"Lady Malcolm of Poltalloch" Bed	5	3	4	982	9	11
1,071	14	4	"Seamen's Hospital Aid Committee" Bed, No. 7	5	9	2	1,071	14	4
1,071	14	4	"Trossach's" Bed	5	9	2	1,071	14	4
1,040	7	8	"King George's Fund for Sailors" Bed, No. 3, Tilbury	5	5	6	1,040	13	4
1,000	0	0	The "Scherhuly" Bed	1	1	5	1,000	0	0
1,000	0	0	The "Radmore" Bed	—	—	—	1,000	0	0
3½% War Loan, 1952.									
627	19	3	"American Victoria Jubilee" Fund	21	19	6	792	19	11
808	18	8	"Argonaut" Bed	28	6	2	1,000	0	0
350	17	6	"William Hollins" Fund	12	5	6	443	2	0
70	3	6	"James David Dinsdale" Fund	2	9	0	88	12	6
68	18	2	"Anne du Bois" Memorial Fund	2	8	2	82	16	6
430	19	1	"Gerald Leather" Trust	15	1	8	400	0	0
2,111	7	10	"Hong Kong" Fund	73	17	10	2,000	0	0
529	1	0	"Silvertown" Fund	18	10	4	500	0	0
1,056	1	1	"Burmah" Fund Bed, No. 1, H.T.D.	36	19	2	1,000	0	0
1,065	16	7	"Jacob's" Trust	37	6	0	1,000	0	0
50	0	0	"Callender Volunteer Squad" Fund	1	15	0	47	10	0
518	0	5	"Bury" Fund, A.D.	18	2	6	483	4	2
1,056	15	2	"Cherry Blossom" Bed	36	19	8	1,000	0	0
1,899	19	10	"Elizabeth Tupper" Trust	66	10	0	1,800	0	0
1,051	1	11	"Perthshire" Bed	36	15	8	1,000	0	0
1,061	13	0	"Hamilton-Canada" Bed	37	3	2	1,000	0	0
1,136	13	4	"British-American War Relief Fund of Philadelphia" Bed	39	15	8	1,070	13	3
10,623	12	2	"Silver Thimble" Fund	371	16	6	10,000	0	0
113	11	0	"Lacey" Bed Fund	3	19	6	100	0	0
1,194	16	5	"Buenos Aires" Bed, No. 1	41	16	4	1,000	0	0
1,168	12	9	"Buenos Aires" Bed, No. 2	40	18	0	1,000	0	0
1,168	12	9	"Alec Hammond" Bed	40	18	0	1,000	0	0
1,133	0	2	"Sheerness" Bed	39	13	0	1,000	0	0
1,169	10	8	"Angas Ward," K.G.S.	40	18	8	1,000	0	0
1,169	10	8	"Buenos Aires" Bed, No. 3, K.G.S.	40	18	8	1,000	0	0
11,113	8	0	"Inchcape" Fund, K.G.S.	388	19	4	10,026	19	11
1,004	6	9	"Angas" Bed	35	3	0	1,000	0	0
997	8	11	"McEachern" Bed	34	18	2	1,000	0	0
996	15	5	"Orford Walker" Bed	34	17	8	1,000	0	0
1,004	6	9	"Swedish" Bed, No. 1	35	3	0	1,000	0	0
1,004	6	9	"Lambert" Bed	35	3	0	1,000	0	0
1,004	6	9	"Annie Barnes" Bed	35	3	0	1,000	0	0
1,004	6	9	"Annie Barnes" Bed, K.G.S.	35	3	0	1,000	0	0
1,030	14	8	"Ceylon" Bed, No. 1, H.T.D.	36	1	4	1,034	7	1
1,003	19	11	"Shanghai Silver Thimble" Fund Bed	35	2	8	1,008	2	3
994	3	7	"Seamen's Hospital Aid Committee" No. 2 (Masonic) Bed	34	15	10	1,000	0	0
1,047	0	2	"T. W. Smyth" Bed, No. 2	36	12	10	1,000	0	0
989	14	0	"Cuthbert Laws" Bed	34	12	8	1,000	0	0
979	1	10	"Ross Ward," H.T.D.	34	5	4	1,000	0	0
1,008	14	6	"Arborfield" Bed	35	6	0	1,000	0	0
Bank of England Stock.									
272	4	9	"New Zealand" Bed	32	13	4	1,000	0	0
				<i>Carried forward</i>			5,502 6 9 182,300 19 9		

			(j) ENDOWMENTS—continued.		Income received in 1943.		Value when acquired.			
£	s.	d.	£	s.	d.	£	s.	d.		
			<i>Brought forward</i>		5,502	6	9	182,300	19	9
3½% India Stock (converted).										
1,048	9	10	"George Busk" Memorial Fund	9	3	6	—			
1,041	13	4	"Law" Memorial Fund	9	2	3	—			
Northern Ireland 3½% Stock, 1950-54.										
1,000	0	0	"Mrs. Charles Hollway" Bed, No. 2	18	15	0	—			
900	0	0	"Munro Watson" Bed	33	15	0	900	0	0	
3% London County Council Consolidated Stock.										
4,641	10	5	"Inchcape" Fund, K.G.S.	139	4	8	4,500	0	0	
3½% London County Council Stock, 1952-62 (converted).										
990	0	0	"Eliza Mary England" Bed	34	13	0	—			
5% Corporation of London Stock, 1945-65 (converted).										
1,212	0	0	"Members of Lloyd's Marine Insurance Companies and Shipowners" Bed	30	6	0	—			
3¼% Bournemouth Corporation Stock, 1958-62.										
1,003	13	0	"Thames" Bed, No. 2, Tilbury	32	12	4	1,000	0	0	
4¼% Brighton Corporation Stock, 1945-75 (converted).										
1,012	10	9	"Charles F. Torrey" Bed	24	1	0	—			
5% Bristol Corporation Stock, 1950-60 (converted).										
170	3	5	"Wireless" Bed Fund	4	5	1	—			
5% Cardiff Corporation Stock, 1945-65 (converted).										
992	8	9	"King George's Fund for Sailors" Bed, No. 3, Tilbury	24	16	2	—			
Metropolitan Water Board 3% "B" Stock.										
216	16	0	"Bertha" Fund	6	10	2	200	0	0	
11,099	4	1	"Inchcape" Fund, K.G.S.	332	19	6	11,000	0	0	
1,121	2	0	"Swedish" Bed, No. 2	33	12	8	1,000	0	0	
1,097	5	6	"Inchcape" Bed	32	18	4	1,000	0	0	
1,101	15	11	"Sir James Michelli" Bed	33	1	0	1,000	0	0	
1,101	15	11	"Thames" Bed, No. 1	33	1	0	1,000	0	0	
Metropolitan Water Board 4¼% "D" Stock (converted).										
509	4	0	"St. Michael and St. George" Bed Fund, H.T.D.	11	9	1	—			
5% London Passenger Transport Board "B" Stock, 1965-2023.										
1,080	0	0	"Aileen Congreve" Bed	54	0	0	1,000	13	0	
414	0	0	"Moorsom Trust" Bed, No. 3, Tilbury	20	14	0	373	14	7	
Commonwealth of Australia 3% Reg. Stock, 1943-44.										
1,140	8	2	"Lady Harriette Ann McIlwraith" Fund	34	4	2	1,005	13	6	
Commonwealth of Australia 3% Reg. Stock, 1955-58.										
1,126	12	9	"Emma Atkins" Bed, Tilbury	33	16	0	1,000	0	0	
Commonwealth of Australia 3¼% Reg. Stock, 1956-61.										
99	14	6	"C.O.L. G.M." Trust	3	4	10	100	0	0	
998	13	0	"Aileen Congreve" Bed	32	9	2	1,000	0	0	
538	1	4	"Wireless" Bed Fund	14	4	2	524	7	10	
Commonwealth of Australia 3½% Reg. Stock, 1954-59.										
934	8	1	"Seamen's Hospital Aid Committee" Bed, No. 3	32	14	0	927	4	1	
51	19	6	"C. W. Simson" Trust	1	16	4	51	13	4	
10,274	0	5	"British Red Cross and Order of St. John of Jerusalem" Fund, H.T.D.	359	11	10	10,212	16	3	
574	5	6	"Gulliver" Bed	20	2	0	570	17	1	
553	0	8	"Ladies' Emergency Committee of the Navy League" Bed	19	7	2	549	14	9	
567	13	1	"T. W. Smyth" Bed	19	17	4	564	5	5	
570	14	9	"Reynolds" Bed	19	19	6	567	6	9	
568	4	7	"Seamen's Hospital Aid Committee" Bed, No. 1	19	17	10	564	16	10	
			<i>Carried forward</i>		7,032	10	10	222,914	3	2

(j) ENDOWMENTS—continued.

£	s.	d.		Income received in 1943.		Value when acquired.	
				£	s. d.	£	s. d.
			<i>Brought forward</i>	7,032	10 10	222,914	3 2
Dominion of New Zealand 4½% Inscribed Stock, 1944.							
461	4	8	"Inchcape" Fund, K.G.S.	20	15 2	439	7 5
Dominion of New Zealand 5% Inscribed Stock, 1946 (converted).							
953	8	0	"Lady Malcolm of Poltalloch" Bed	47	13 4	—	—
Union of South Africa 3½% Inscribed Stock, 1954-59.							
1,023	11	0	"Elliott Seabrooke" Bed, A.D.	35	16 6	1,000	0 0
1,023	11	0	"Alfred Dewick" Bed	35	16 6	1,000	0 0
South Australian 4% Inscribed Stock, 1940-60.							
2,099	0	0	"Chamberlain" Fund, A.D.	83	19 2	2,065	1 6
Great Western Railway Ordinary Stock.							
300	0	0	"Rowden" Fund	13	10 0	192	10 0
Great Western Railway 4% Debenture Stock.							
913	0	0	"Sir Arthur Clarke" Bed Fund	36	10 4	908	6 5
4½% Great Western, Bristol, Exeter and South Devon Railway Joint Rent Charge Guaranteed Stock.							
1,138	0	0	"G. W. Lindsay White" Bed, H.T.D.	51	4 2	999	10 5
Commonwealth of Australia 3½% Reg. Stock, 1961-66.							
2,070	6	9	McCarthy Main Trust D. & Til.	72	9 4	2,020	10 0
1,028	5	1	Seamen's Hospital Aid Committee Bed, No. 5	35	19 10	1,010	3 7
1,048	6	3	Seamen's Hospital Aid Committee Bed, No. 6	36	13 10	1,010	7 7
1,031	5	10	S. A. Oxtoby Bed	36	1 10	1,010	4 2
3% London & North Eastern Railway Debenture Stock.							
1,702	0	0	"Ceylon" Bed, No. 2, H.T.D.	51	1 2	1,000	3 8
4% London & North Eastern Railway 2nd Guaranteed Stock.							
1,045	0	0	"Stidolph" Trust	41	16 0	1,000	0 0
4% London, Midland & Scottish Railway Deb. Stock.							
20,000	0	0	"British Red Cross Society and Order of St. John of Jerusalem" Fund, H.T.D.	800	0 0	17,154	11 0
14,250	0	0	"Inchcape" Fund, K.G.S.	570	0 0	9,991	10 6
5% London, Midland & Scottish Railway Debenture Stock, 1952 (converted).							
986	0	0	"Seamen's Hospital Aid Committee" Bed, No. 7	24	13 0	—	—
986	0	0	"Trossachs" Bed	24	13 0	—	—
4% London, Midland & Scottish Railway Guaranteed Stock.							
2,529	0	0	"James Nourse" Beds	101	3 2	1,999	12
4% London, Midland & Scottish Railway Preference Stock, 1923.							
1,167	0	0	"Douglas Vernon Cow" Bed	46	13 6	999	16 2
4% Southern Railway Debenture Stock.							
176	0	0	"Fox Batley" Fund	7	0 10	203	3 1
18,827	0	0	"Inchcape" Fund, K.G.S.	753	1 8	15,094	11 5
East Indian Railway "B" Annuity, 1953.							
£89	Annuit		"Singhancee Indian Ward" Fund, Tilbury	82	14 0	1,700	0 0
3½% Great Indian Peninsula Railway Debenture Stock.							
1,024	0	0	"Duke of Connaught" Ward, K.G.S.	35	16 10	979	7 6
1,042	0	0	"Frank Carr" Bed	36	9 4	1,000	0 0
2,085	0	0	"Jane Breeds" Beds, D. & Til.	72	19 6	2,000	0 0
<i>Carried forward</i>				10,187	2 10	287,693	0 3

£ s. d.			Income Received in 1943		Value when acquired.		
			£	s. d.	£	s. d.	
			<i>Brought forward</i> .. 10,187 2 10 287,693 0 3				
4% South Indian Railway Regd. Debenture Stock, 1945 (converted).							
1,313	5	3	" King George's Fund for Sailors " Bed, Tilbury	26	5	4	—
4½% London Passenger Transport Stock T.F.A., 1942-72 (converted).							
1,040	0	0	" Seamen's Hospital Aid Committee " Bed, No. 10	23	8	0	—
516	0	0	" Charles Heath Clark " Fund, H.T.D.	11	12	2	—
3% London Passenger Transport Guaranteed Stock, 1962-72.							
1,067	0	0	" Seamen's Hospital Aid Committee " No. 10 Bed	14	9	9	1,026 5 7
529	0	0	" Charles Heath Clark " Fund, H.T.D.	7	11	8	512 18 3
4% East Surrey Water Co. Consolidated Debenture Stock.							
2,000	0	0	" Chamberlain " Fund A.D.	80	0	0	1,959 15 6
5% Agricultural Mortgage Corporation Debenture Stock.							
998	6	9	" Seamen's Hospital Aid Committee " Bed, No. 11	49	18	4	1,000 16 6
United Northern Minerals, Ltd.							
107	0	0	970 2/- Shares Deferred	—	—	—	—
..	10 £1 Ordinary Shares	—	—	—	—
Buenos Aires Western Rly. Ord. Stock.							
511	0	0	" Gertrude Young " Trust	—	—	—	34 9 10
			<u>£10,400</u>	<u>8</u>	<u>1</u>	<u>£292,227</u>	<u>5</u> <u>11</u>

B. FOR GENERAL PURPOSES.

I.—Government and other Securities.							
£ s. d.			£ s. d.		£ s. d.		
281	0	0	East India Railway Annuity, Class B	261	1	11	7,306 0 0
5	0	0	United Railways of Havana and Regla Warehouses, Ltd., 4½% Western Debenture Stock	—	—	—	5 7 0
205	0	0	The Gas Light and Coke Co., 3½% Maximum Stock	6	3	0	112 15 0
221	0	0	The Eastern Extension Australasia and China Telegraph Co. 4% Mortgage Debenture Stock	8	16	10	159 2 5
360	0	0	36 £10 Fully-paid 6% Preference Shares of the Globe Telegraph and Trust Co., Ltd.	21	12	0	378 0 0
250	0	0	Argentine Conversion 4½% Bonds, " Geiselbrecht " Bequest	11	5	0	242 16 9
198	0	0	L. Mid. & S. Rly. 4% 1st Pref. Stock	7	18	4	144 14 10
394	0	0	South Suburban Gas Co. 5% Ord. Stock, Mary Ann Bentley	15	15	2	427 9 9
400	0	0	State of San Paulo 8% Sterling Bonds, 1921	5	4	2	190 0 0
2,900	0	0	L. & N.E. Rly. Co. 4% 2nd Guar. Stock	116	0	0	1,841 0 0
5,000	0	0	Do. 4% 1st Pref. Stock	200	0	0	2,725 0 0
5,000	0	0	Do. 4% 2nd Pref. Stock	131	5	0	1,775 0 0
133	0	0	Do. 5% Pref. Ord. Stock	—	—	—	22 0 0
400	0	0	Lampport & Holt Lines, Ltd., 150 Ord. Shares of 6/8 each	3	0	0	32 16 3
200	0	0	Southern Railway 4% Deb. Stock	16	0	0	425 15 6
50	0	0	4% Victory Bonds (Mr. and Mrs. Wallace)	8	0	0	214 0 0
20	0	0	3% Defence Bonds, Rev. A. R. W. Woods)	1	10	0	50 0 0
15	0	0	Do. do.	—	—	—	20 0 0
10	0	0	Do. do.	1	4	—	15 0 0
5	0	0	Do. do.	—	—	—	10 0 0
70	0	0	Do. do.	—	—	—	5 0 0
15	0	0	Do. Blackheath Stretcher Party	2	2	0	70 0 0
15	0	0	Do. Wardens' Post, River 8	9	0	—	15 0 0
15	0	0	Do. Mrs. D. Baker	9	0	—	15 0 0
65	0	0	Do. Warships' Week, 1942	1	19	0	65 0 0
20	0	0	Do. D.C. 18, Wardens' Post, Erith	—	—	—	20 0 0
			<u>Carried forward</u> ..	<u>818</u>	<u>15</u>	<u>1</u>	<u>16,286</u> <u>17</u> <u>6</u>

I.—Government and other Securities—continued.

£ s. d.				Income received in 1948		Value when acquired.	
				£ s. d.	£ s. d.		
			<i>Brought forward</i>	818 15 1		16,286 17 6	
150 0 0	3%	Savings Bonds, 1955-65,	Courtauld Bequest	34 10 0		1,150 0 0	
1,360 0 0		Do.	do. do.	40 16 0		1,360 0 0	
2,000 0 0		Do.	do. Devonport Reserve Fund	60 0 0		2,000 0 0	
1,208 15 0	2%	Conversion Loan, 1943-45,	Courtauld Bequest	24 3 6		1,199 16 0	
3,500 0 0		Do.	do.	35 0 0		3,519 9 9	
500 0 0		Do.	do. Devonport Reserve Fund	5 0 0		502 16 10	
5,000 0 0		Do.	do.	50 0 0		5,044 9 6	
4,500 0 0	2½%	National Defence Bonds, 1944-48		112 10 0		4,582 2 6	
2,000 0 0		Do.	do.	50 0 0		2,041 9 0	
849 0 0		G.I.P. Railway 3½%	Debenture Stock	29 14 4		814 4 9	
2,000 0 0		Courtaulds, Ltd., £1	Ordinary Stock Units, Courtauld Bequest	150 0 0		3,250 0 0	
1,000 0 0	2½%	National War Bonds, 1951-53		11 19 8		1,000 0 0	
4,000 0 0		Do.	do.	21 1 11		4,000 0 0	
4,000 0 0		Do.	do.	31 4 7		4,000 0 0	
4,000 0 0		Do.	do.	5 4 1		4,000 0 0	
500 0 0		Do.	do. Devonport Reserve Fund	13 0		500 0 0	
5,000 0 0	3½%	War Bond		—		5,181 13 0	
5,000 0 0		Do.		—		5,172 3 6	
1,000 0 0	2½%	Conversion Loan, 1944-49		25 0 0		1,010 3 0	
				<u>£1,505 12 2</u>		<u>£66,615 5 4</u>	

The late Viscount Devonport Trust Fund.

			£ s. d.	£ s. d.
58,500 0 0	3%	Funding Loan, 1959/69	1,755 0 0	58,311 1 0
58,000 0 0	3%	Conversion Loan, 1948/53	1,740 0 0	58,363 10 0
			<u>£3,495 0 0</u>	<u>£116,674 11 0</u>

II.—Properties.

		£ s. d.	£ s. d.
No. 24, Budge Row, in the City of London (Rack Rent) (destroyed by enemy action)		—	12,417 9 10
No. 22, Queen Street, in the City of London (Ground Rent)		381 5 0	8,100 0 0
17 Houses, Richmond, Surrey (Ground Rents)		113 13 6	—
4 Do. do. (Rack Rents)		264 14 6	1,517 1 11
18 Do. Priory Avenue, Hornsey (Ground Rents)		134 0 0	3,888 0 0
6 Do. Rosebery Road, Muswell Hill (Ground Rents)		78 15 0	2,141 19 5
61 Do. Blackheath (59 Ground Rents; 2 Rack Rents)		468 1 9	15,530 9 3
Highbridge, East Greenwich (Rack Rent)		337 19 0	3,666 18 8
10, Crooms Hill, Greenwich, S.E.10 (Rack Rent)		135 11 0	1,095 5 1
12, Do. (Rack Rent)		72 12 6	1,148 16 0
10, Orchard Place, Southampton (Destroyed by enemy action)		—	1,607 17 5
66, 67, 68, King William Walk, Greenwich		127 9 0	—
Devonport House, Greenwich		437 15 7	—
50, Flaxton Road, Plumstead		45 10 0	518 0 0
103, 105, 107, Westminster Bridge Road, S.E. (destroyed by enemy action)		—	2,902 6 9
Fields at Cudham		35 0 0	2,021 13 10
		<u>£2,632 6 10</u>	<u>£56,555 18 2</u>

THE "ANGAS" CONVALESCENT HOME.

(a) FOR SPECIAL PURPOSES.

ENDOWMENTS.

3½% Conversion Stock, 1961.

£ s. d.		£ s. d.	£ s. d.
256 8 6	"Schools" Bed, No. 1	8 19 6	195 17 5
350 9 0	"Schools" Bed, No. 2	12 5 2	349 19 4
120 12 8	5% War Loan Conversion Fund	4 4 4	120 9 7

4% Funding Loan.

1,250 0 0	"Norman Austin Taylor" Bed	50 0 0	1,000 0 0
	<i>Carried forward</i>	<u>75 9 0</u>	<u>1,666 6 4</u>

ENDOWMENTS—*continued.*

£ s. d.			Income	Value when
			Received in 1943.	acquired.
			£ s. d.	£ s. d.
		<i>Brought forward</i> ..	75 9 0	1,666 6 4
3½% War Loan, 1952.				
1,064 8 6	"Gordon" Bed ..		37 5 0	1,000 0 0
1,056 15 2	"Harriette Ann McIlwraith" Bed ..		36 19 8	1,000 0 0
1,055 11 0	"Navy League Overseas Relief Fund" Bed ..		36 18 10	1,000 0 0
105 13 6	"Oldham Lees" Trust ..		3 13 10	100 0 0
1,056 14 11	"Becker Bed" ..		36 19 8	1,000 0 0
1,583 19 11	"King George's Fund for Sailors" Bed ..		55 8 8	1,500 0 0
1,056 15 2	"Ladies' Emergency Committee of the Navy League" Bed ..		36 19 8	1,000 0 0
1,049 15 8	"Angas" Bed ..		36 14 10	1,000 0 0
1,095 16 4	"Sevenoaks" Bed ..		38 7 0	1,000 0 0
1,095 16 4	"Baltic and Lloyds Ambulance Unit" Bed ..		38 7 0	1,000 0 0
1,004 6 9	"Annie Barnes" Bed ..		35 3 0	1,000 0 0
821 13 3	"Schools" Bed, No. 1 ..		28 15 2	824 3 5
3½% Birmingham Corporation, 1946.				
1,294 19 10	"Seamen's Hospital Aid Committee" Bed ..		45 6 6	1,000 0 0
3% L. & N.E. Railway Debenture Stock.				
1,121 0 0	Schools" Bed, No. 2 ..		33 12 8	650 0 8
			<u>£576 0 6</u>	<u>£14,740 10 5</u>

(b) GENERAL PURPOSES.

£ s. d.			£ s. d.	£ s. d.
105 10 7	3½% War Loan, 1952 ..		3 13 10	100 0 0
4,549 10 7	Do. ..		159 4 8	4,292 7 10
250 0 0	4½% Argentine Conversion Bonds (Geiselbrecht Bequest) ..		11 5 0	242 16 9
			<u>£174 3 6</u>	<u>£4,635 4 7</u>

DEVONPORT PATHOLOGICAL LABORATORY
RESEARCH FUND.

£ s. d.			£ s. d.	£ s. d.
1,184 3 6	3½% Conversion Stock ..	Seamen's Hospital Aid Committee Research Endowment Fund ..	41 8 10	1,000 0 0
973 14 4	3½% War Stock ..		34 1 6	1,000 0 0
1,026 7 7	2% Conversion Stock, 1943-45 ..		—	1,025 5 3
1,000 0 0	3% Savings Bonds, 1955-65 ..		30 0 0	1,000 0 0
566 12 8	Do. do. ..		—	566 15 4
1,542 15 4	Do. do. ..		—	1,543 1 1
1,017 18 11	Do. 1960-70 "A" ..		—	1,018 0 10
1,000 17 1	Do. do. ..		—	1,000 17 3
			<u>£105 10 4</u>	<u>£8,153 19 9</u>

SEAMEN'S HOSPITAL SOCIETY

In presenting the 123rd Annual Report of the Committee of Management at the Annual Court of Governors held on 13th April, 1944, the Chairman, Captain Sir Ion Hamilton Benn, Bt., C.B., D.S.O., T.D., R.N.V.R., said :—

I regret to report that on the night of 21st–22nd March, the parent hospital, the "Dreadnought" at Greenwich, was for the fourth time damaged by enemy action. The damage to the Devonport Nurses' Home and Devonport House was extensive and to the Casualty and Out-Patient Department of the Hospital also. Mercifully, no one was killed or seriously injured. The hot-water and steam services were put out of action and there was much dirt and debris: the In-Patients were therefore transferred to the Angas Home Recovery Hospital at Cudham and to another hospital in Sector X during one week. But the Dreadnought Hospital did not close its doors to seamen, has never done so and will never do so, even if we have to work in tents.

Officers and Seamen of all nationalities who are injured in the course of duty or who are suffering as the result of exposure on duty are entitled to hospital treatment free of charge under the Emergency Hospital Service. Those members of the Merchant Navy who do not fall within this category are required to contribute towards the cost of their maintenance in Emergency Medical Service Hospitals. I wish to make it quite clear however, to all our good friends and supporters and to all those who in the future will, I hope, lend a hand to Sailors when they are on the sick list, that the Seamen's Hospitals continue to give the same maintenance and treatment to all Merchant Seamen as they have done for more than 120 years, and that the Society still looks for voluntary support for continuing its services to the Sailors.

The scheme for the post-war establishment at Greenwich of a Tropical Diseases Hospital and Centre, based on the Seamen's Hospital Society and the London School of Hygiene and Tropical Medicine, has been carried a stage further by the favourable welcome given by the Lord President's Committee of the Cabinet to the report submitted by the Colonial Secretary after consideration by the eight Government Departments concerned. Furthermore, the Society will be called upon to play its part in looking after those prisoners in the Far East, who, when they are released from Japanese hands, return home suffering from Tropical Diseases.

As Chairman of this group of voluntary hospitals, which in normal times comprises no less than 600 beds, and all the various departments, I wish to make some comments upon the Government's White Paper on the National Health Service.

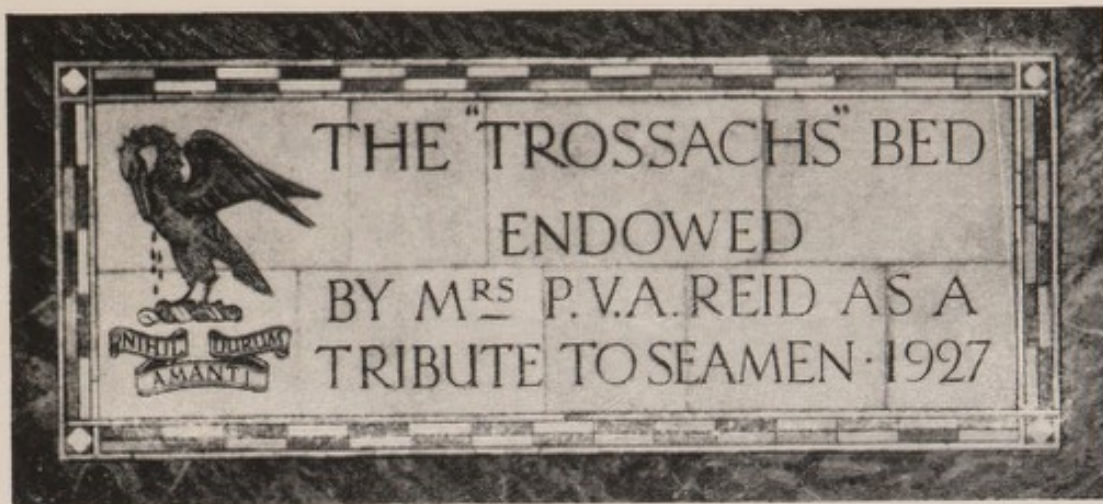
The voluntary hospitals cannot be characterised as being a "vested interest" in this matter, because their sole aim is the welfare of their patients. In pursuance of this principle the

British Hospitals Association, which represents the voluntary hospitals in this country, originated a scheme for co-ordinating hospital services in given areas. This scheme was based upon complete co-operation, on an equal footing, between the voluntary hospitals and the local authorities, each providing those services to the patient it was best able to give, sharing jointly the duty of so organising the hospital service of the area that the service would be available and accessible to any who might need it. An essential feature of the organisation was to be the establishment in each area of a joint advisory body consisting of representatives, medical and lay, of the voluntary hospitals and the local authorities, for the purpose of planning and maintaining a service adequate to the needs of the area and to determining the function of each hospital, voluntary or municipal, in the local plan.

The proposals contained in the White Paper, however, place complete control and the assessment of need, the whole of the local planning and the administration of the services in the hands of bodies to be known as Joint Authorities, which are wholly composed of local authorities. There is no direct contact at any point between them and the voluntary hospitals which would either secure the basis of partnership (referred to by successive Ministers of Health as an essential factor of the scheme) or ensure that the experience and facilities already available in the voluntary hospitals were properly utilised by the proposed Joint Authorities. The fact that the voluntary hospitals provided the bulk of the In-Patient service for the acute sick, and practically the whole of the Out-Patient service, appears to have been ignored. Their methods of securing scientific advance to the benefit of the patient are historically proven, and these proposals, which will reduce the voluntary hospitals to a position of subservience to the local authorities, can only result in a lowering of standards and constitute an impediment to progress. It is, therefore, in the interest of the patient that we desire to secure the place of the voluntary hospitals in equal partnership with the local authorities in the great undertaking of providing a co-ordinated hospital and consultant service accessible to every member of the community regardless of his or her income.

Fortunately there are opportunities for consultation with the Minister of Health and his Department, and we may have confidence in the Council of the British Hospitals Association. Our strength will lie in the backing of all those who by their financial aid have kept the voluntary hospitals as part of the national heritage. I am confident that they will continue to respond to our appeal.

At the Annual Court last year I said it was our desire that the Seamen's Hospital Society should continue to provide for Seamen the hospital treatment which they require when their ships return to home ports. We shall continue to confer with all sections of the shipping community to determine what is needed. On behalf of the Committee of Management, I give all sections of the shipping industry our assurance that we will continue to exert all our endeavours to meet those needs.



WALL TABLET OVER AN ENDOWED BED.

ENDOWED BEDS.

The gift of £1,000 will endow or name a Bed in perpetuity and offers the opportunity of commemorating the names of those dear to the benefactor (see page 12 of this Report).

LEGACIES.

The Committee earnestly hope that the sailors who turn to the Society's Hospitals when sick or injured will be allowed to share in legacies bequeathed for charitable purposes.

By a clause in the Act of Parliament 3^o Gul. IV, Cap. IX by which it is incorporated, The Seamen's Hospital Society is empowered to receive and to hold Real Estate.

EXEMPTION FROM INCOME TAX ON CHARITABLE GIFTS.

The Committee would remind regular subscribers to the Seamen's Hospital Society of the benefit which accrues to the sailor by the adoption of the Income Tax Recovery Scheme. Every subscription paid out of income taxed at the standard rate can be considerably increased at no extra cost to subscribers, if they will sign the requisite form agreeing to pay the subscription for seven years, or until their death, whichever be the shorter period. They can also deduct for Surtax purposes, the gross amount represented by their subscription.

QUALIFICATION FOR A GOVERNOR—
ONE GUINEA ANNUALLY.

LIFE GOVERNOR—TEN GUINEAS DONATION.

In the interests of economy, only this special Abridged Report is being issued this year. The complete record of Subscribers and Donors may be inspected on application to the Secretary, Head Office, Seamen's Hospital Society, Greenwich.