

Annual report : 27th (1946/47) / Kent County Association for the Blind.

Contributors

Kent County Association for the Blind (Kent, England)

Publication/Creation

[Maidstone?] : [publisher not identified], 1947

Persistent URL

<https://wellcomecollection.org/works/axa3zw6b>

License and attribution

This work has been identified as being free of known restrictions under copyright law, including all related and neighbouring rights and is being made available under the Creative Commons, Public Domain Mark.

You can copy, modify, distribute and perform the work, even for commercial purposes, without asking permission.



Wellcome Collection
183 Euston Road
London NW1 2BE UK
T +44 (0)20 7611 8722
E library@wellcomecollection.org
<https://wellcomecollection.org>



**KENT
COUNTY ASSOCIATION
FOR THE BLIND**

Formed June 22nd, 1920

Registered under the Blind Persons Act

15th November, 1920

Acting on behalf of the Kent County Council

TWENTY-SEVENTH

ANNUAL REPORT

1946 - 47

15, ASHFORD ROAD, MAIDSTONE

THE
ANNUAL GENERAL MEETING

will be held at the offices of the Association

15, ASHFORD ROAD, MAIDSTONE

On MONDAY, OCTOBER 27th, 1947

at 3 p.m.

The meeting will be of a purely formal character



**Sir Edward Hardy at the Opening Ceremony,
Ramsgate Guest House for the Blind**

**WELLCOME
LIBRARY**

Ann Rep

WW28

.B65

K37

1946-47

President :

Sir Edward Hardy

Vice-Presidents :

The Hon Lady Baillie.	Sir George Jessel, Bt., M.C.
Capt. The Rt. Hon. H. H. Balfour,	G. R. Leschallas.
P.C., M.C.	Sir Adam Maitland.
Lt.-Col. C. H. Balston, J.P.	The Most Hon. The Dowager
Alfred Bossom, M.P.	Marchioness of Ormonde.
The Rt. Hon. Lord Cornwallis, M.C.,	Sir Waldron Smithers, J.P., M.P.
J.P., Lord Lieutenant.	A. J. Southam, M.B.E., J.P.
Viscountess Hardinge.	W. P. Spens, O.B.E., K.C.
The Rt. Hon. Lord Harris, M.C., D.L.,	
J.P.	

Members of the General Council :

Miss H. C. Alwyn.	F. W. Guppy.
C. F. Bastock.	Lady Hawley.
Mrs. C. F. Bastock.	Mrs. J. Hewlett Hobbs.
Miss M. M. C. Burrows	A. B. Homan.
(Representing the County Council).	W. Jenner.
A. F. Corfe.	R. A. Mills.
Miss M. Culver.	H. Powell.
Rev. Ben Davies (Representing the	Miss E. Poole Smith.
County Council).	Mrs. E. C. Smith.
Dr. Marjorie Day.	Mrs. G. E. Snow.
(Representing the County Council).	Miss V. M. Spenser Wilkinson
Brigadier Harold Fletcher, O.B.E.,	(Southern Regional Association for
T.D. (Chairman).	the Blind).
C. F. Fox.	J. Taberner
Mrs. J. Griffey.	(National Institute for the Blind).

Members of the Executive Committee :

Brigadier Harold Fletcher, O.B.E.,	Dr. Marjorie Day.
T.D. (Chairman)	Mrs. J. Griffey.
C. F. Bastock.	Mrs. J. Hewlett Hobbs.
A. F. Corfe.	A. B. Homan.
Miss M. Culver.	W. Jenner.
Rev. Ben Davies.	

Co-opted Members :

Miss H. C. Alwyn.	F. T. Lambe.
F. W. Guppy.	R. J. Smail.

Hon. Treasurer :

A. B. Homan, Westminster Bank, Ltd., Maidstone.

Hon. Solicitors :

Messrs. E. A. Morling and Son, Maidstone.

Auditor :

A. H. Filmer, A.L.A.A.

Bankers :

Westminster Bank, Ltd., Maidstone.

General Secretary :

F. P. Ogden, 15, Ashford Road, Maidstone.

ANNUAL REPORT, 1946 - 47

The Kent County Association for the Blind has pleasure in presenting its Twenty-Seventh Annual Report. During the year there has been another small increase in the register of blind persons. The number is now 2,120.

The work of the year has been chiefly notable for the renewed activities of the local Committees, who, during the war had necessarily to limit them more or less to the bare essentials; the promotion of Social Centres; and the opening of the Guest House at Ramsgate. The reports of the local Committees are most encouraging. The welfare of the blind has once again been firmly established by the Committees in Ashford, Dartford, Dover, Chatham, Faversham, Gillingham, Gravesend, Herne Bay, Hythe, Maidstone, Ramsgate, Sheerness, Sittingbourne, Tonbridge, Tunbridge Wells and Whitstable, although to all these Committees newcomers would be very welcome. Some of the active members have carried on for many years and have expressed the hope that younger people will soon be able to take over, at least, the more strenuous part of the work. There is probably no welfare work in the county which can give more satisfaction to an honorary worker. To see the happy faces of our blind friends at an annual outing, a Christmas party, or at one of the Social Clubs is an experience not easily forgotten, and their appreciation of what is done for them is more than sufficient reward for the trouble taken in organising these events. It is, however, a job for young people with a zest for social work, and the Association does badly need some new blood if it is to extend its work in the right direction throughout the county.

Shortage of paper once again prevents us from publishing full reports of the local Committees' work, but some have already appeared in the local press. Nothing in the work of the Association has been so fruitful of results as its organisation of Social Centres and Clubs. Some are conducted by the local Committees, some by the Home Teachers, and others by the blind people themselves. Regular Club Meetings are now held in Ashford, Bexleyheath, Dartford, Gravesend, Maidstone, Medway Towns, Tonbridge, Tunbridge Wells, Herne Bay, Welling, Whitstable, Ramsgate, Folkestone and Hythe, and occasional meetings are held in Bromley. They are not, of course, all conducted on the same lines, but according to the special needs of the locality and age of the blind people themselves. In some of the more thickly populated areas there is a larger number of younger blind persons with progressive

ideas, but in all cases there is no doubt about the enthusiasm with which the formation of such a centre or club is greeted. This is easy to understand when one realises how restricted is the life of the average blind person, and how little opportunity he or she has for social intercourse.

One of the newest Clubs is at Gravesend. This was formed by the local Committee, who for some time had great difficulty in finding suitable accommodation—always a problem in these days. It was started in November, 1946, and is run entirely by the blind people themselves, as is the St. George's Club (Dartford and District), Fairview Club (Welling), Rosemary Club (Tonbridge), Tunbridge Wells and District Social Club, and Folkestone. At the Gravesend Club meetings are held fortnightly, and the programme of games consists of dominoes, cards, draughts, ludo. There is a great rivalry amongst the members over a game of darts. The afternoon's session concludes with a cup of tea and a bun, and community singing. It is the Association's hope that clubs of this kind will one day be found in every suitable district in Kent.

Without doubt there is much talent amongst the blind people. At the Rosemary Club, Tonbridge, they go in for talks given by people with first-hand information, and an interesting story of Winchester and its Cathedral was given by a blind member, who had spent the holidays there. Blind people are very generous, in so far as their pockets and talents will allow, in responding to appeals for assisting other people in distress. One instance is that of the Rosemary players (all blind) presenting their play (written by one of the blind members), "Margaret's Wild Oats," as part of an entertainment organised by the Inner Wheel at which £26 10s. was raised for King George's Fund for Sailors.

It is pleasing to be able to report that social gatherings have recommenced in Dover, Folkestone and Hythe, and that all the meetings have been well attended. In Folkestone a group meets every fortnight and generally entertain themselves, but sometimes the programme is varied by entertainers from outside. A choir of ladies from Hythe gave a concert of part songs, recitations and a one-act play. On another occasion the Canterbury Road Townswomen's Guild gave a similar programme, and later on the Rhodes Minnis Women's Institute provided a delightful afternoon with the performance of a Gipsy operetta. Sometimes one group visits another, and the hospitality is returned as when Folkestone visited the Hythe members. It is impossible to calculate how much joy is experienced by our blind friends on such occasions. One often hears it stated that the blind ought not to be "segregated," and disapproval is expressed by well-meaning people, with but limited experience of such gatherings, and even of Homes and Hostels

solely for the benefit of the Blind. They, rather naturally, think it would be far better for them to associate generally with sighted persons in such gatherings and residences, and even in work. Of course, blind people are not confined to such gatherings, and there are blind persons in sighted Homes for the aged, and many blind persons are now employed in sighted industry, which is all to the good ; but of one thing there is no doubt whatever, and that is that Social Clubs, for the Blind only, meet a very special need. Sometimes old school friends meet at such gatherings for the first time, they are freer to express themselves, they definitely understand one another and have much in common to discuss, which a sighted person would not understand, and as to Homes they can be much better looked after if the Home is of the right type. It is strange, but true, that sighted and blind persons in adversity do not look at their problems from the same point of view, and there is often little mutual help or understanding between them. A sighted resident in a home does not, as a rule, respond to the appeal to devote himself or herself to the needs of a blind person, and would feel it rather irksome and a bore to be tied to blind persons to take them for walks, etc. Blind people in the right environment seem to have a greater capacity for enjoyment and happiness when with other blind persons, than do sighted people when they are together.

The Home Teachers, who are directly employed by the County Council, but work under the direction and supervision of the Association, now number 13, four of whom are registered blind persons, and are in full harness devoting their energies to regular visiting of the Blind to their respective areas. Their work is little known by some sighted people, and it has even been suggested in different parts of the country, fortunately not in Kent, that their work could be merged into that of, say, Health Visitors, or of other social workers. It would be a disaster of the first magnitude if ever such an opinion were to gain currency. How often do people, even in important spheres of life, venture to criticise or make proposals about matters concerning which they are completely uninformed ! The Association is frequently being called upon, even after 27 years of activity in the county, to explain and even justify its work not to the man in the street who has a short memory, but to important members of the community, who should be in a position to know better. Perhaps to some extent this is not so difficult to appreciate. The work of the Association is of the quiet and unobtrusive order. Blind Welfare generally is almost in the nature of "doing good by stealth." To publicise its work too blatantly would be an injustice to the blind people themselves. They do not like to think of themselves as objects of charity, and the "Pity the poor blind" type of appeal has long ceased to be made. The blind are conscious of certain needs, which can only

be met by the kindness and generosity of their sighted friends ; but help, if it is to be of the right kind, must be dignified and in keeping with the preservation of their self-respect.

It is the duty of the Home Teachers to assist newly blinded people to preserve or regain their self-respect, and by no means to suggest to them that henceforth they are merely objects of charity, only to be pitied. Their characters therefore must be of a high standard and only after careful training and long experience can anyone be fully qualified to undertake this very specialised work. To become the blind person's confidant and friend is of the utmost importance. When that relationship is established the rest is easy. The Home Teacher must convince the blind person that life still holds much that is worth living for, and in suitable cases the teaching of the languages of the Blind, Braille and Moon, open up a new world. In other cases some pastime occupation is desirable. The teaching of these and other subjects to blind people calls for much experience and patience in dealing with a wide variety of temperaments. The Home Teacher is the first link between the blind person and the whole world of activities devoted to Blind Welfare as carried on by the Association and its representatives. A few interesting examples of a Home Teacher's success in teaching the blind will give some idea of the nature of the work. The report says, "Crafts learnt : basketry, seagrass stools, rugs, wax flower making, raffia work and knitting. Cases : (1) Blind lady, aged 69, has learnt handwriting (with special frame) and now writes a legible letter, also learnt to use typewriter, raffia work and finished Grade 1 Braille. (2) Blind lady, aged 84, has been taught Moon and joined the National Library. (3) Young blind boy helped with English Grammar and literature, French, and is now ready to commence a course of study for matriculation."

It is difficult for the average person to believe, but it is true that a middle-aged man, totally blind and totally deaf (not from birth) has been taught the deaf-blind alphabet and to read books and write his own letters in Braille. The patient perseverance of a Home Teacher rendered this possible and it is not by any means an isolated example. The Association is justifiably proud of the work of its Home Teaching Services and acknowledges with deep appreciation the devotion and energy with which the Home Teachers have endeavoured to carry on their work and extend the sphere of their influence with our blind friends. We are well served in Kent.

Under the provisions of recent legislation there have been and will be, some alterations in the schemes for blind welfare, but it is believed and hoped that the day will not dawn when the Voluntary Society will be thanked for its services and told to put up its shutters.

There are some people who have gained the impression that this is inevitable and seem to link up Blind Welfare with hospitals, but as far as can be seen at present, all the evidence tends in the direction of preserving as much voluntary work as is practicable. It would be a sad day in the history of this country, if all voluntary effort were to cease. It must not be forgotten that practically all the benefits and privileges which blind persons enjoy to-day are the direct result of the activities of Voluntary Associations, who have throughout the ages constantly urged their needs upon a sometimes reluctant and unprogressive government or local authority. It would be a bad day for the blind if they were suddenly bereft of an experienced advocate ; but surely this is hardly likely to happen. Blind Welfare organisations deal direct with the individual blind person and establish an intimate and friendly relationship, hardly possible in circumstances where an official with the best will in the world might be tied to rules and regulations laid down in a scheme of general welfare. It is therefore believed that the Association will carry on its work with perhaps an added blessing from the powers that be. Consequently we must seek the financial help of our sighted friends in the County.

Strange though it may be there are still many people who do not know that the County Association is the **only** Society in the County of Kent responsible, under the authority of the County Council, for the welfare of all the blind people in the County, and consequently donations and subscriptions are sometimes sent to organisations outside the County under the impression that by so doing the subscriber is indirectly subscribing to a fund from which this Association benefits. The Secretary has on many occasions been told that subscriptions have been sent direct to the Association's Headquarters in London. The Association has no other headquarters than at Maidstone, and if Kent people wish to help the work of the Association in the County, subscriptions should be sent there. There is, for instance, as has been supposed, no financial link between the Association and St. Dunstan's, which looks after the interests of men and women in the Services who were blinded as the result of the war. Fortunately there were very few such casualties in this war, and out of a total of 2,120 blind persons in the County only 67 are St. Dunstaners, and of these the majority were blinded in the 1914-18 war.

Our commitments are increasingly heavy. The cost of all necessities for the blind has mounted, and yet we must be prepared to meet these needs if we are to continue to be an efficient organisation. We, therefore, need more and more financial help, and we have faith to believe that the work of the Association is now so much better known that the help will be forthcoming.

What has our work consisted of during the year. Much has been told already of our activities but there is much more. Constant are the requests for clothing, coal, dental treatment, expenses for travelling to hospitals, holidays in special Homes, Annual outings to the sea-side, Christmas parties, and almost as many requests as a growing child makes of its parents—which parents know are endless in quantity and variety. We like to think that Kent citizens will support us, because the funds are wisely administered and are not used other than as needful supplements to the provisions made for assistance under the County Council's Scheme. Many are the occasions when the County Council has asked the Association to help the blind persons in some special way outside the scope of its own scheme. No scheme could be devised to meet completely the individual needs of blind persons of ages varying from one to ninety.

Our great ambition has at last been achieved! After many years of hopes deferred, we have succeeded in providing a beautiful Guest House for elderly blind people. It is at Ramsgate, 32, St. Mildred's Road. In October, 1943, an appeal was launched for £25,000. This figure had relation to one fact only and one possibility. The fact was that we hoped to raise this total to celebrate our 25th birthday in 1945, and the possibility was that it would be adequate. The appeal was an instant success, and the total raised at the date of the opening was £31,000, but we were wrong about its adequacy. Pre-war, it would have been ample and would have been enough also to establish a small endowment fund; but after the war, prices soared almost beyond our reach, and we have only just scraped home.

Fortunately we took a chance and bought the premises, formerly an hotel and during the war in Military occupation, in 1944. Had we not done so, the possibility of getting such a building would have been remote indeed. It needed a lot of alteration to meet our special requirements. We wanted it to represent a step forward from the type of Home which could really only be regarded as little more than a superior institution. We wanted a Home that would really be Home for the residents, where there would be few restrictions and a great deal of privacy, and this we believed is what Kent people wanted for their blind friends. Well, it is here! and there are 35 happy blind persons already in possession. As the blind guests repeatedly say, "If we are not happy here, we shall be happy nowhere. Nothing has been forgotten for our comfort." The furniture and equipment is all first class, and there is a beautiful lawn and garden. The house is three minutes from the sea front and the residents have been generously accorded a welcome by the Ramsgate Borough Council, who have extended to them the same privileges as are given to the blind residents of the town;

such as free seats on the promenade and at certain concerts. The Ramsgate citizens have adopted the Home, and members of the Toc H and other societies and churches do their utmost to give all the help that is required in such matters as taking the guests out for walks, arranging concerts in the Home, and generally making themselves useful. It is a grand enterprise, but a big responsibility. We estimate that it will cost the Association £1,500 a year from voluntary funds to keep it going. Financial help is afforded by payments of 21s. of their Old Age Pension from the guests, and by grants from the Kent County Council, but these will not meet all our requirements. Please do help us to maintain this Home at the same standard as we have commenced it. If you saw it and the people in it, you would not refuse.

The opening ceremony was performed by Sir Edward Hardy (President of the Kent County Association for the Blind) in the spacious grounds, which provided a charming setting for this red letter day in the annals of the County Association.

Brigadier H. Fletcher, O.B.E., T.D. (Chairman of the Association) presided, and among others on the platform were Mrs. Fletcher, the Mayor and Mayoress of Ramsgate (Mr. and Mrs. Stanley E. Austin), the Archdeacon of Canterbury (the Ven. A. Sargent, M.A.), Mr. T. Barlass (Chairman of the Kent Guest House for the Blind House Committee), Mr. L. Mason Apps, A.R.I.B.A., A.M.T.P.I. (architect) and Miss Apps, Alderman R. W. Rule (Chairman of the Kent County Council Blind Persons' Committee) and Mrs. Rule, Col. C. R. Thornton-Kemsley, O.B.E., M.P. (Director of Public Relations, Messrs. John Lewis and Co., Oxford Street), Mr. F. P. Ogden (Secretary Kent County Association for the Blind) and Mrs. Ogden, and Mrs. D. Solly (Warden of the Guest House).

The large and representative gathering also included the Mayors and Mayoresses of Bexley, Chatham, Dartford, Deal, Dover, Erith, Faversham, Gravesend, Hythe, Tenterden and Margate, the Mayor and Deputy Mayor of Canterbury, and the Mayor of Queenborough, while Urban and Rural District Councils represented included those of Sheerness, Tonbridge, Broadstairs and St. Peter's, Whitstable and Hollingbourne.

The dedication was conducted by the Archdeacon of Canterbury (the Ven. A. Sargent, M.A.), and the well-known song "Bless this House," was sung by the Tonbridge Blind Singers, who themselves had raised £600 by their concerts in the County.

The whole ceremony was prominently reported in the County Press, and a full report appeared in the "East Kent Gazette," a copy of which is inserted herewith. Over 600 people from widely

spread parts of the County attended, a clear indication of the keen interest taken by our supporters in this new, and we hope, successful venture.

Unfortunately there is still a waiting list of some length for admission to the Home, and priority is given to the blind residents of Kent and the County Borough of Canterbury. Only able-bodied blind persons, who do not require nursing or special medical attention can be admitted. There is an urgent need for a similar home for those who are suffering from some illness or disability, which disqualifies them for the Ramsgate Home; but we have been given to understand that such provisions will in future be the responsibility of the Regional Hospital Board, operating under the new Health Act, and our activities must be confined to the able-bodied.

The two smaller Homes which the Association took over from the Tunbridge Wells Workshop and Blind Welfare Committee also have a full complement; four blind women at Claremont Road and ten men (some of them Home Workers) at 9, St. James' Road.

The Annual Meeting of the Association was held at 15, Ashford Road, Maidstone, on October 27th. Sir Edward Hardy presided. Once again it was only possible to hold a purely formal meeting for the adoption of the Annual Report.

Space alone prevents us from giving fuller details of many other interesting activities and extensions of our work since the war, but the Committee do hope that socially minded people throughout the County will continue their support, both actively, by offering to take up some side of the work that appeals to them in their own locality, and also financially.

Our Accounts for the year ended March 31st, 1947, look very healthy, but most of our investments have now been liquidated to meet the expenses of the Home at Ramsgate.

We are very pleased to be able to report that the Committee is working in very close co-operation with all the local Committees, and recently the Association arranged to be responsible for raising funds in Canterbury for the benefit of the Canterbury Blind Persons' Charity and the National Institute for the Blind under a Common Fund Collection Agreement.

Once again, we can with great pleasure record our appreciation and thanks for the wonderful assistance rendered both financially and in other ways by our friends throughout the county: Organisers and Collectors on Flag Days, Tradesmen and Licensed Victuallers, School Teachers and their Scholars, the County Council and its officers, the National Institute for the Blind, the National Library for the Blind, Gardner's Trust, British "Wireless for the Blind" Fund, Southern Regional Association for the Blind, Greater London Fund, the Clothworkers' Company, Women's

Institutes, Sir Beechcroft Towse Ex-Service Fund, British Legion, Rotary Clubs, Toc H, the Police Authorities, the Kent Council of Social Services, Women's Voluntary Service, Rediffusion Services, the County Press, to Dr. Philip Grugeon (Hon. Medical Consultant, Ramsgate Home), and Mr. E. A. Morling, our honorary Solicitor.

To these must be added a special tribute to our Architect, Mr. L. Mason Apps, A.R.I.B.A., A.M.T.P.I., who was responsible for all the structural alterations at Ramsgate ; to Messrs. John Lewis Limited Oxford Street, who furnished the Home ; to Messrs. John Lewis (Building) Limited, who carried out the building operations ; to Messrs. Maylam Rustics Limited, Margate, who brought into being a beautiful lawn and garden at short notice, and to all the sub-contractors and the many others who during the year contributed to a successful undertaking. The Secretary reports that it would have been impossible to find a more helpful body of people with whom to work during so many arduous months. There was no friction due to misunderstanding or temperament throughout the whole proceedings, and many lasting friendships were made.

It was with very great regret that the Association received the resignation of the Chairman (Lt.-Col. C. A. Johnstone-Smith), owing to ill-health. He has always been a keen and active supporter of the work of the Association since his appointment to the Committee as representative of the County Council in 1936. We all sincerely hope that his health will be speedily restored.

There have been several alterations in the staff and work has been badly hampered through this cause and through illness. Mr. E. J. Merrell, who was formerly with the Public Assistance Department, was appointed chief clerk to succeed Mr. Squirrell, and he has rapidly proved his worth. Added responsibilities were cheerfully undertaken by him and the other members of the staff in connection with the opening of the Guest House, and the Committee record appreciation of their invaluable assistance with sincere thanks.

This report would not be complete without an expression of the most sincere thanks to our Secretary, Mr. Ogden, for his invaluable services. He has, as usual, given his time and knowledge to an unlimited degree, to the work of the Association, and it is due to his efforts more than to anything else that we are the proud possessors of probably the finest Guest House for Blind People in the Country.

It is indeed a monument to his work over many years, and it is certain that the only recompense he requires is the knowledge that in due course this Guest House at Ramsgate will be no financial burden, and that our unsighted friends who live there are happy and comfortable.

HAROLD FLETCHER,
Chairman.

REGISTRATION.—The following changes have taken place in the Register during the year ended March 31st, 1947 :—

Number on the Register, 1st April, 1946	2061
Less :—Deaths	166
Removals	51
Defective sight, not technically Blind	7
	<hr/> 224
	1837
Add :—Transfers from other Counties	80
New Cases in Kent	194
Restored to Register	2
	<hr/> 276
	2113
Changes of address within the County	129

The 2,113 blind persons (including 58 St. Dunstaners) on the Register are classified as follows :—

Babies	8
Children at School	18
Children not at school (either mentally or physically defective)	13
Training in Institutions	25
Employed in Workshops	14
Employed as Home Workers	70
Employed elsewhere	130
Unemployable	1816
No training, but trainable	15
Trained, but unemployed	4
	<hr/> 2113

Included in the 1,816 Unemployable Blind Persons there are 251 who suffer from other defects :—

Mental (a)	67
Physical (b)	33
Deaf (c)	137
Combination of (a) and (b)	3
ditto (a) and (c)	9
ditto (b) and (c)	2
ditto (a) (b) and (c)	—
	<hr/> 251

The distribution in Age Periods is as follows :—

Ages 1—5	8
„ 5—16	31
„ 16—21	37
„ 21—50	353
„ 50—70	752
„ Over 70	932
	<hr/> 2113

KENT COUNTY ASSOCIATION GENERAL CHARITY FUND ACCOUNT

EXPENDITURE	£	s.	d.	£	s.	d.
1.—Allowances to the Blind and Services directly for their benefit :—						
Salaries and Insurance for Eleven Home Teachers and One Guide (£1,514)	*26	0	0			
Travelling Expenses (£200)	5	6	10			
Postage and Stationery (£32)	47	5	6			
Tools and Materials (£92)	142	12	10			
Rent of Class and Club Rooms (£39)	53	4	6			
Embossed Literature (£53)	55	8	1			
Wireless Maintenance and Relay Services (£406)	544	10	2			
Necessitous Cases, Allowances, Grants, Clothing and Holidays (£1,884)	2585	4	8			
Payments for Kent County Council—Contra (£188)	128	18	0			
Pensions—Contra (£289)	332	17	0			
Braille Copyists' Augmentation and Insurance—Contra (£257)	263	17	6			
Payments for Essex Education Committee—Contra (£171)	103	1	5			
Allocated to National Institute for the Blind (£1,588)	1509	18	9			
Allocated to Local Committees (£854)	789	0	2			
Miscellaneous (—)	31	16	2			
(£7,575)				6619	1	7
2.—Management :—						
Salaries and Insurance (£1,152)	1376	14	10			
Auditor's Fee (£2)	2	2	0			
Travelling Expenses (£90)	94	4	6			
Printing, Stationery and Postage (£153)	290	6	7			
Rent, Rates, Insurance & Telephone (£153)	157	11	4			
Fuel, Light and Cleaning (£60)	87	14	1			
Sundries, Cheque books, etc. (£16)	35	19	7			
(£1628)				2044	12	11
3.—Common Fund Collections (Agreement with National Institute for the Blind) :—						
Salaries, Wages and Insurance (£1,843)	1874	15	6			
Auditor's Fee (£3)	3	3	0			
Travelling Expenses (£192)	145	10	3			
Printing, Stationery, Emblems, Christmas Stockings, Postage, etc. (£638)	931	16	4			
(£2,677)				2955	5	1
4.—Other Expenditure :—						
Depreciation of Assets (£28)	36	6	1			
Repairs and Renovations (£5)	12	14	2			
Miscellaneous (—)	51	18	7			
(£33)				100	18	10
£11,915)				£11,719	18	5
5.—Ramsgate Home General Account	292	1	8			
Deficit Tunbridge Wells Hostels A/c	31	5	5			
				323	7	1
6.—Allocation to Home Appeal Account (£2,000)				2000	0	0
(£15,470)				£14,043	5	6

FOR THE BLIND

for the YEAR ENDING 31st March, 1947.

INCOME		£	s.	d.	£	s.	d.
1.—Grants in Aid :—							
Kent County Council :							
Administration (£1,129)		1123	3	7			
Home Visiting (£1,717)		71	11	7*			
Refund of Payments on behalf of County Council—Contra (£188)		128	18	0			
(£3,036)					1323	13	2
National Library for the Blind Braille Copyists' Augmentation—Contra (£257)		263	17	6			
Essex Education Committee—Contra (£171) (£429)		103	1	5			
					366	18	11
2.—Subscriptions and Donations :—							
Subscriptions and Donations (£93)		390	4	9			
Pension Societies—Contra (£289)		332	17	0			
Greater London Fund (£546)		488	8	0			
National Institute for the Blind — Special Grant (£12)		-	-	-			
Kent Council of Social Service—" Help the Children " Scheme (£98)		96	1	0			
Hythe Blind Wireless Fund (£23) (£1,063)		-	-	-			
					1307	10	9
3.—Common Fund Collections (Agreement with National Institute for the Blind) :—							
Sundries, including Flag Days, Christmas Stockings, School Collections, etc. (£7,093)		6890	1	3			
House-to-House Collections (£1,914)		1806	2	3			
Whist Drives, Dances, Collecting Boxes, etc. (£1,426)		1679	3	8			
Subscriptions and Donations (£173)		112	14	8			
Emblems re-sold (£14) (£10,622)		16	16	11			
					10504	18	9
4.—Rent, Interest, Etc.:—							
Interest on Investments (£134)		167	5	0			
Sophie Cardarelli Trust (£45)		45	18	0			
Bank Interest (£13) (£193)		12	19	7			
					226	2	7
5.—Other Income :—							
Refunded for Blind Persons (£57)		40	10	10			
Sale of Goods and Materials (£66)		114	9	4			
Miscellaneous Refunds, etc. (£1) (£125)		44	1	10			
					199	2	0
					13,928	6	2
6.—Balance, being Excess of Expenditure over Income							
					114	19	4
		(£15,470)			£14,043	5	6

Figures in () are corresponding figures for year ended 31st March, 1946

Audited and found correct—(Signed) ALBT. H. FILMER, A.L.A.A.

14th May, 1947.

*Home Teachers' salaries, etc., are now paid direct by the K.C.C.

N.B.—It is regretted that space does not permit publication of Subsidiary Accounts, but these can be seen at the office by appointment.

KENT COUNTY ASSOCIATION

BALANCE SHEET as

	Liabilities	£	s.	d.	£	s.	d.
Sundry Creditors					1057	11	0
Fund Surplus:—							
As at 1st April, 1946		29802	15	8			
Add:—							
Investments:—							
Transfer Workshop & Welfare							
Work for the Blind		1094	2	9			
Post Office Savings Bank		500	0	0			
Property:—							
9, St. James Road		1500	0	0			
Furniture and Fittings		100	0	0			
Home Appeal Account Balance							
as at 31st March, 1947		19897	11	11			
					52894	10	4
					£53,952	1	4
Less:—							
Home Appeal Balance as at							
31st March, 1946		20886	4	4			
Excess Expenditure over In-							
come, 1946-47		114	19	4			
					21001	3	8

Audited and found correct.

(Signed) ALBT. H. FILMER. A.L.A.A.

14th May, 1947.

£32,950 17 8

FOR THE BLIND

at 31st MARCH, 1947

	Assets	£	s.	d.	£	s.	d.
Sundry Debtors, including out- standing Loans					537	17	0
Furniture and Equipment :—							
Valuation at 31st March, 1946		256	16	9			
Add Purchases, 1946-1947		106	4	6			
		363	1	3			
Less Depreciation at 10%		36	6	1			
					326	15	2
Homes :—							
9, St. James Road, Tunbridge Wells		1500	0	0			
Furniture and Fittings		100	0	0			
					1600	0	0
32, St. Mildred's Road, Rams- gate		8250	0	0			
Furniture and Fittings		5187	15	9			
					13437	15	9
Investments :—							
General Account (including Tunbridge Wells):—							
3% Defence Bonds		1100	0	0			
2½% National War Bonds		4100	0	0			
3½% War Stock		429	7	11			
3½% Conversion Stock		364	7	9			
3½% Australia, 1952-56		100	7	1			
3½% Australia, 1956-61		100	0	0			
Post Office Savings Bank		587	7	5			
					6781	10	2
Home Appeal Account :—							
3% Defence Bonds		500	0	0			
510 Savings Certificates at Cost		385	0	0			
					885	0	0
Cash at Bank and in hand :—							
General Account		3713	4	8			
Home Appeal Account		5574	16	2			
Imprest in hands of Secretary and Home Teachers		56	0	0			
Petty Cash in hand :—							
General Account		3	15	8			
Ramsgate Account		9	12	0			
Tunbridge Wells Account		24	11	1			
					9381	19	7

£32,950 17 8

KENT COUNTY ASSOCIATION FOR THE BLIND

HOME APPEAL ACCOUNT, AUGUST, 1943, to 31st MARCH, 1947

Expenditure		£	s.	d.	£	s.	d.
Cost of Appeal :—							
Postage		352	14	2			
Postal Appeals (including Printing, Stationery, etc.)		910	7	6			
Advertising		55	4	4			
Salaries of Blind Organiser and Travelling Expenses		677	17	1	1996	3	1
Stamp Duties, Fees, Legal Charges		320	5	6			
Insurances, St. Mildred's		24	8	9	344	14	3
On Account :—							
Repairs, Alterations, Equipment and Fees		8292	5	5			
Balance carried to Balance Sheet :—							
St. Mildred's—Purchase Price ..		8250	0	0			
Furniture and Fittings — Purchase Price		5187	15	9			
*Investments		885	0	0			
Cash at Bank		5574	16	2	19897	11	11
					£30,530	14	8

	£
*3% Defence Bonds	500
Savings Certificates	385
	£885

	£	s.	d.
Income			
Donations and Interest on Investments, etc. ...	20227	2	7
War Department — Rent, Fire Insurance and Compensation	1303	12	1
Allocations from General Funds (1944-1946)...	9000	0	0

£30,530 14 8

Audited and found correct,

(Signed) ALBT. H. FILMER, A.L.A.A.

14th May, 1947.

HONORARY REPRESENTATIVES AND CORRESPONDENTS

Anerley—J. W. McIntosh, 45, Felmingham Road, Penge, S.E.20.
Ashford—R. Smail, 176, Hythe Road.

Blean—Arthur Rigden, Marshside, Chislet, Canterbury.
Bridge—L. J. Williams, Bridge.
Broadstairs—Mrs. Robson, Sunnyside, Pierremont Avenue.
Bromley—Miss E. Poole-Smith, 131, Widmore Road.

Cranbrook—Mrs. Annie Pile, Oak Lodge.

Dartford—E. J. Hobbs, West Hill.
Deal—Canon E. D. Bowser, The Rectory.
Dover—Mrs. McMaster, St. Stephen's, Godwyne Road.

Eastry R.D.C.—F. A. Cloke, Solicitor and Clerk, Sandwich.
Erith—Mrs. Bayley, 21, Park Crescent.

Faversham—H. J. Boorman, 61, St. John's Road.
Fordcombe—Mrs. L. A. Walters, Fordcombe Manor.

Gravesend—E. J. Harding, Highlands, Windsor Road.

Herne Bay—Mrs. L. Dixon Taylor, Roedean, Beltinge Road.
Hythe—Mrs. E. C. Smith, 109, Seabrook Road.

Maidstone—F. W. Guppy, Bramleys, Plantation Lane, Bearsted.
Margate—Miss M. Culver.
Mongeham, Great—Miss Grant Edwards, Stone Hall.

Offham—Miss Gertrude Gilead-Smith, Quarrenden.

Penge—J. W. McIntosh, 45, Felmingham Road, Penge, S.E.20.
Penshurst—The Lady Hardinge, South Park.

Ramsgate—H. Powell, M.B.E., 4, North Avenue.
Romney, New—W. Lamacraft, Clerk, R.D.C.

Sandgate—H. Stainer, Solicitor and Clerk, 51, High Street.
Sandwich—Miss Chibbett, 5, Moatsole.
Sheerness—F. T. Lambe, 21, Union Street, Minster.
Sittingbourne—Miss A. Weller, 78, Borden Lane.

Tonbridge—Mrs. Gordon, 2, Dry Bank Road.
Tunbridge Wells—Miss Alwyn, 50, Frant Road.

Walmer—Mrs. Hulke, The Croft, Upper Walmer.
Welling—C. F. Fox, 25, Leigh Place.
Whitstable—Mrs. Griffey, Stratford Cottage, Chestfield.
Wrotham—Rev. A. P. Pascoe, The Rectory.

LIST OF HOME WORKERS IN KENT

BRUSHMAKER

Langley Heath—G. Ward.

CHAIR CANERS

Folkestone—Miss M. Pullen, 2, Victoria Grove.

Ightham—L. Webb, "Kingsdown," Spring Lane.

Tunbridge Wells—E. Goodwin, 58, St. James' Road.

" F. W. Dyer, 9, St. James' Road.

Whitstable—P. C. Wilkinson, 16, Harbour Place.

GENERAL BASKET MAKERS

Bickley—J. Holman, 4, Tylney Road.

Broadstairs—R. C. Chamberlain, South Lodge, 19, The Vale.

Chatham—A. Simpson, 41, New Road.

Cranbrook—R. Feaver, 4, Henniker Cottages.

Gillingham—J. Anderson, 1, Danes Hill.

" L. Daw, 27, King Street.

Maidstone—A. Sullivan, 82, Foster Clark Estate.

St. Mary's Bay—S. Pearce, Sun Dial, Taylor's Lane.

Sidcup—W. Morris, 93, Benwick Crescent.

Sittingbourne—C. R. Crane, 30, George Street.

Tonbridge—J. J. Ollive, 20, Audley Avenue.

Tunbridge Wells—C. W. Boxsell, 28, Upper Street, Rusthall.

" G. Cambers, 9, St. James' Road.

" E. Day, 22, Dynevor Road.

" M. Gingell, 9, St. James' Road.

" J. K. Higgins, 9, St. James' Road.

" R. J. Keeley, 21, York Road.

Welling—F. Warne, 69, Porthkerry Avenue.

Willesborough—D. Eldridge, 3, Camden Terrace.

RUSH SEATERS

Cranbrook—R. Feaver, 4, Henniker Cottages.

Tunbridge Wells—E. Goodwin, 58, St. James' Road.

MAT MAKERS

Blean—A. W. Gammon, Tyler Hill.

Cranbrook—A. Feaver, 4, Henniker Cottages (reversible mats only).

Rochester—R. Wilkinson, 9, Langdon Road.

Tonbridge—E. Evans, 1, Uridge Road, Shipbourne Road.

" S. E. Vanns, 80, Baltic Road.

NET MAKER

Hextable—J. Magner, "Fairview," Victoria Hill.

MACHINE KNITTERS

Beckenham—Miss V. Schrod, 15, Sydney Road.

Bexleyheath—Mrs. E. McCulley, 3, Upton Cottages, Erith Road.

" Miss I. Robinson, 26, Upton Road.

Bromley—Miss J. Thompson, 127, Pickhurst Lane, Hayes.

Capel—Mrs. M. T. Carden, 6, Brampton Bank.

Chislehurst—Miss A. Harrison, 46, Barham Road.

Dover—Mrs. W. E. Butcher, 8, Norman Street.

Erith—Miss V. Rainsbury, 49, Page Crescent, Slades Green.

Hawkhurst—Miss F. Collier, Gun Green Farm.

Northfleet—Miss D. Whalley, 13, Park Avenue.

Rochester—Mrs. G. Bradford, 18, Langdon Road.

" Miss N. Arrowsmith, 17, Langdon Road.

Sheerness—Miss M. Davis, 89, Coronation Road.
 „ Miss P. Homard, 2, Winstanley Road.
 Tonbridge—Mrs. E. Vanns, 80, Baltic Road.
 „ Miss N. Kingsnorth, 36, Albert Road.
 „ Miss H. Cook, 11, Hectorsage Road.
 Tunbridge Wells—Miss L. K. Timms, 26, Erskine Park Road, Rusthall.
 Welling—Miss E. Pettitt, 120, Budley Crescent.
 Woodchurch—Miss M. Chasmar, "Kootenay," Tenterden Road.

HAND KNITTERS

Aylesham—Miss S. Miller, 24, Clarendon Road.
 Gillingham—Miss M. Hughes, 26, St. Mary's Road.

PIANO TUNERS

Bexley—E. W. Burton, 7, Red Lodge Lane.
 Bromley—F. W. Allen, 16, Ridgeway, Hayes.
 „ A. Bygrave, 44, Havelock Road.
 „ C. Cruwys, 16, Thornton Road.
 Farnborough—G. Gow, 22, Beechwood Avenue, Green Street Green.
 Gillingham—H. Heap, 39, East Street.
 Greenhithe—B. Buxton, The Avenue.
 Maidstone—H. Berridge, 149, Union Street.
 Northfleet—H. H. Hardy, 17, Detling Road.
 Riverhead—J. P. Lewis, 7, Homefield Road.
 St. Paul's Cray—G. Bartingale, "Montana."
 Sandwich—B. French, 31, Woodnesborough Road.
 Strood—S. Blake, 56, Gordon Road.
 Tonbridge—H. Minting, 13, The Chase.
 Welling—W. A. Hall, 147, Elsa Road.

TEACHERS OF MUSIC

Greenhithe—B. Buxton, The Avenue.
 Strood—S. Blake, 56, Gordon Road.

MATTRESS MAKER

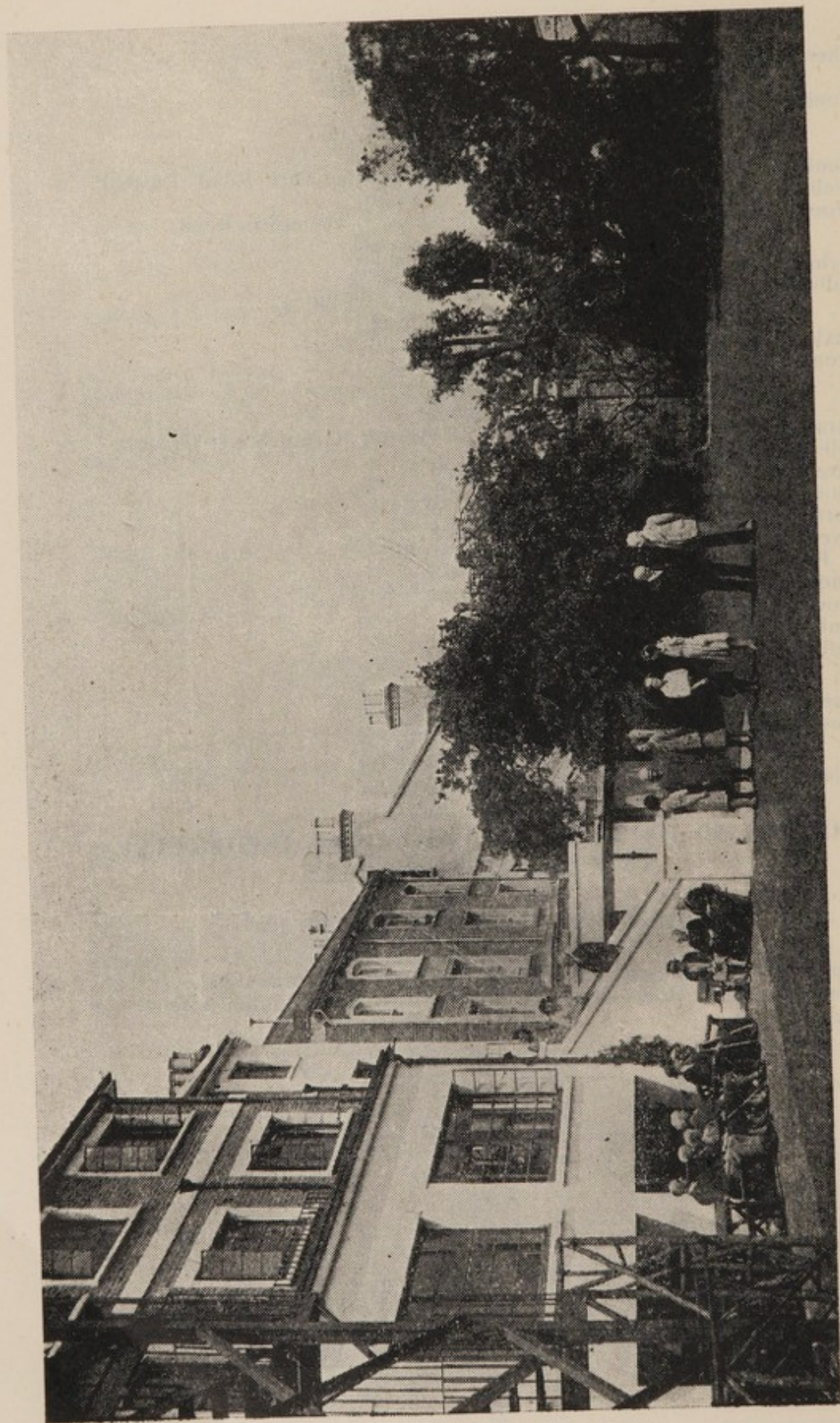
Gillingham—H. J. Carter, 7, Randolph Road.

TOTALS OF EXPENDITURE BY LOCAL COMMITTEES AND REPRESENTATIVES

During the Year Ending 31st MARCH, 1947

The expenditure on behalf of the blind incurred by the Local Committees for the year ended March 31st, 1947, is given below. The amount expended direct from Headquarters is shown in the accounts on page 14.

	£	s.	d.
Ashford	97	6	8
Dartford	633	11	8
Faversham	118	9	10
Gravesend	222	14	8
Herne Bay	110	0	0
Maidstone	144	15	0
Ramsgate	168	19	11
Sheerness	299	13	6
Tonbridge	127	5	1
Tunbridge Wells Social Club	34	16	10
Whitstable	125	0	0
	£2,082	13	2



In the garden at Ramsgate.



The Dining Room, Ramsgate. Lunch WILL be served.



In the Veranda, Ramsgate.

**Clergymen, Ministers, Lady Helpers, District Visitors, and
Social Workers are earnestly requested to report cases of
Blindness to the Secretary or to any of the Honorary
Representatives**

HELP THE BLIND

to

HELP THEMSELVES

Your attention is drawn to the names
and addresses of our Skilled Home
Workers on pages 20 and 21.

When you need Brushes, Chairs Caned,
Baskets of all kinds, Mats, Socks,
Stockings, Furniture Upholstered,
Pianos Tuned, Music Lessons, Wood
Chopped

DON'T FORGET THE BLIND

Apply to the Blind Home Worker in your district or to

**THE SECRETARY OF THE KENT COUNTY
ASSOCIATION FOR THE BLIND**

15, Ashford Road, Maidstone
