

Report of the Homes for Inebriates Association together with the Annual report of the Dalrymple House at Rickmansworth : 39th (1922/23)

Contributors

Homes for Inebriates Association (Great Britain)
Dalrymple House (Rickmansworth, England)

Publication/Creation

London : H.K. Lewis, 1923

Persistent URL

<https://wellcomecollection.org/works/ts39jpzt>

License and attribution

This work has been identified as being free of known restrictions under copyright law, including all related and neighbouring rights and is being made available under the Creative Commons, Public Domain Mark.

You can copy, modify, distribute and perform the work, even for commercial purposes, without asking permission.



Wellcome Collection
183 Euston Road
London NW1 2BE UK
T +44 (0)20 7611 8722
E library@wellcomecollection.org
<https://wellcomecollection.org>

REPORT
OF THE
HOMES FOR INEBRIATES
ASSOCIATION

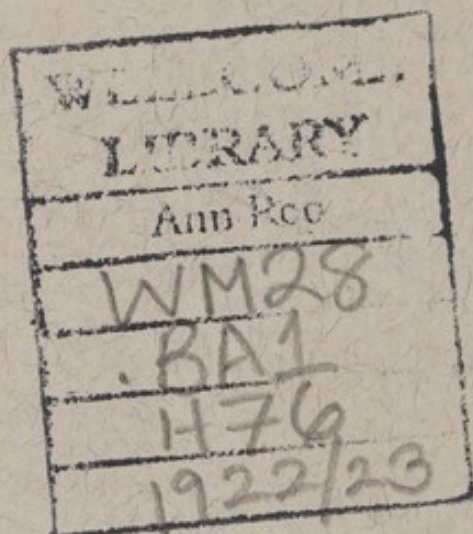
TOGETHER WITH THE
THIRTY-NINTH ANNUAL REPORT
OF THE
DALRYMPLE HOUSE, AT RICKMANSWORTH.

1922-23.



BROWN & SON, HIGH STREET, RICKMANSWORTH, HERTS.

1923.



22501740408

REPORT
OF THE
HOMES FOR INEBRIATES
ASSOCIATION

TOGETHER WITH THE
THIRTY-NINTH ANNUAL REPORT
OF THE
DALRYMPLE HOUSE, AT RICKMANSWORTH.

*(Adopted, and ordered to be printed, at the Annual General Meeting of
the Association, held at Rickmansworth, on Monday, 5th March, 1923).*

1922-23.



BROWN & SON, HIGH STREET, RICKMANSWORTH, HERTS.

1923.

PRESIDENT:

SIR CHARLES CAMERON, BART., M.P.

VICE-PRESIDENTS:

THE ARCHBISHOP OF CANTERBURY	THE BISHOP OF DOWN.
THE BISHOP OF LONDON.	THE DEAN OF YORK.
THE BISHOP OF GLOUCESTER.	RT. HON. SIR C. DALRYMPLE,
THE BISHOP OF HEREFORD.	BART., M.P.
THE BISHOP OF NORWICH.	LORD DERWENT.
THE BISHOP OF PETERBOROUGH	W. HOLMES.
THE BISHOP OF NEWCASTLE.	REV. CANON HORSLEY, M.A.
THE BISHOP OF ST. DAVID'S.	E. STAFFORD HOWARD, J.P.

COMMITTEE OF MANAGEMENT:

Chairman—J. P. R. LYELL, J. P.

Vice-Chairman—T. M. V. VAUGHAN-RODERICK.

E. CLAUDE TAYLOR, M.S., M.D., F.R.C.S.

J. SWINFORD FRANCIS.

SIR S. SQUIRE SPRIGGE, M.A., M.D., F.R.C.S.

F. A. STRIKE.

H. LANGFORD LEWIS.

RESIDENT MEDICAL SUPERINTENDENT:

DR. F. S. D. HOGG,

THE CEDARS, RICKMANSWORTH.

TELEPHONE—16 RICKMANSWORTH.

HONORARY SOLICITOR:

J. SWINFORD FRANCIS.

AUDIT COMMITTEE:

T. M. V. VAUGHAN RODERICK.

F. A. STRIKE.

AUDITORS:

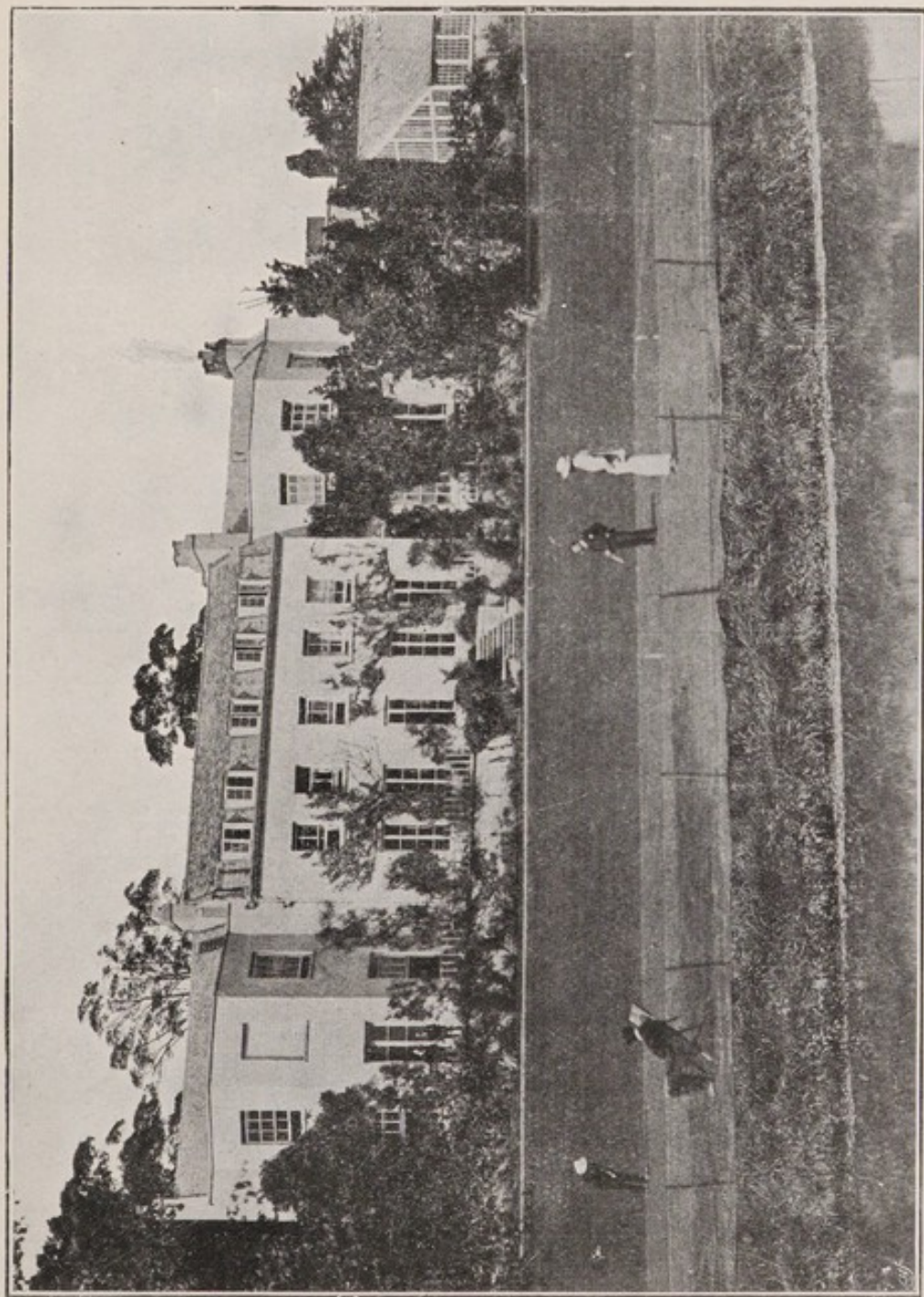
R. BARTON TYLER, F.C.A.

F. A. STRIKE.

SECRETARY:

J. SWINFORD FRANCIS, 173, MARYLEBONE ROAD, N.W.1.

Members of the Committee and other Officers receiving applications for admission to the Dalrymple House, or information relative thereto, are requested to forward the same to the Medical Superintendent for him to reply direct to the applicants.



DALRYMPLE HOUSE, RICKMANSWORTH, HERTFORDSHIRE.

THE HOMES FOR INEBRIATES ASSOCIATION.

BALANCE SHEET AT 31st JANUARY, 1923.

[illegible]

I have audited the Books and Accounts of The Homes for Inebriates Association for the year ending 31st January, 1923, and certify same to be correct. In my opinion the above Balance Sheet is properly drawn up so as to exhibit a true and correct view of the state of the Association's Affairs according to the best of my information and the explanations given me and as shown by the Books.

8th March, 1923.

(Signed) R. BARLOW TYLER, *Chartered Accountant*,
1, QUEEN VICTORIA STREET, LONDON, E.C.4.

DALRYMPLE HOUSE

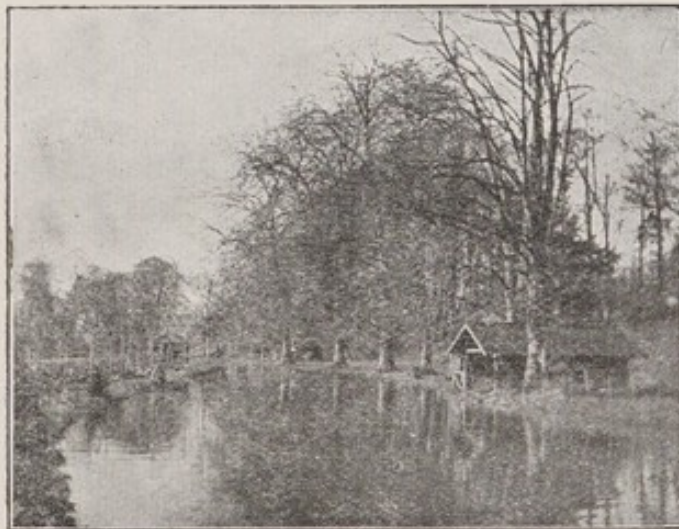
RICKMANSWORTH.

*Report of the Medical Superintendent
for the year ending January 31st, 1923.*

GENTLEMEN,

During the past year 79 patients have been admitted: 55 as private patients and 24 under the Inebriates Act. Of the 79, 9 were drug addicts; the remainder entered an account of alcohol excess.

There has been a noticeable increase in the number of those who ascribed their alcohol habit to business or domestic worries,



ISLAND AND BOAT HOUSE.

and no doubt the financial strain due to the war and its aftermath, and the resulting economic stress, has been the origin in many cases. As a fact 33% have assigned these as causes.

The ages of those admitted ranged from 21 to 77. As a general rule I find that the very young prove unsatisfactory patients—they are not in the true sense voluntary admissions—they resent control, do not realise the necessity for an alteration in their habits, and appear to be not in the least impressed by the effects of intemperance which they see around them among their fellow patients.

I very rarely admit those over 70. It is usually too late an age to expect alteration, though of the three received during the

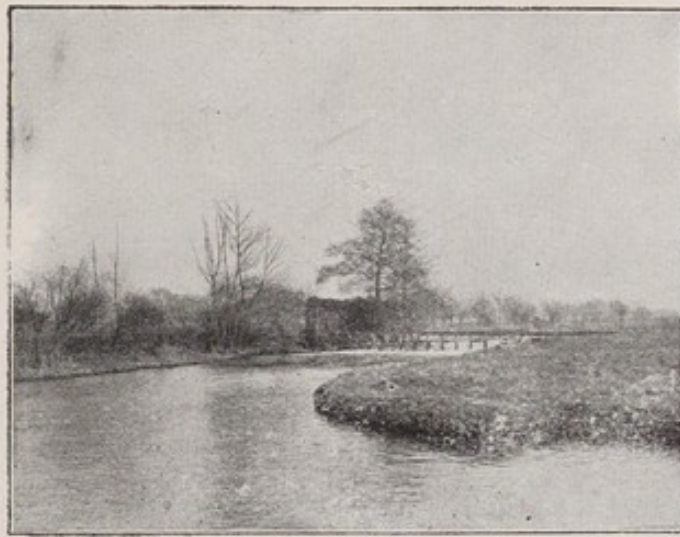


CONCERT ROOM.

previous 21 years: one continued to do well till the time of his death, and I have just received information about another, now aged 84, that he has not touched drink or drugs during the last 12 years.

With regard to the inebriant employed, an increasing number have taken methylated spirits when other spirits were unobtainable either on account of lack of funds or because of the impossibility of purchasing alcoholic drink excepting during a few hours in the day.

In the press, from time to time, the prevalence of this habit is referred to, especially among women. For the past 20 years such methylated spirit as has been used in this Institution has been "doctored" with Tartar Emetic and marked "poison." I have very rarely known a patient to sample this mixture, and have never known one to try it twice. It would add but a trifle to its cost if methylated spirit sold to the public were to have this addition, which would effectively stop its consumption as a beverage.



EAST VIEW FROM ISLAND.

Though a considerable number of those admitted were in a bad condition on arrival, a condition in some cases due, I believe, to the inferior and immature spirits placed upon the market, to which I referred in my last report (and of these, three were in Delirium Tremens), the recovery of health was, as a rule, rapid; and in no cases did any serious illness subsequently develop.

There have been 80 patients discharged, of these the following left prematurely:—2 on account of urgent private affairs; 3 were transferred elsewhere for the benefit of their health; 5 proved unsuitable for treatment (one of them was insane); and in 4 cases I considered further treatment unnecessary.

As I have mentioned in the appended table, the average length of residence of all those discharged during a period extending

over many years has been $20\frac{1}{2}$ weeks. This includes, on the one hand, those who have made a prolonged stay, on the other, persons who have remained only a few days.

During the past year the average has been 9 weeks. There were a considerable number who, for various reasons, could not, or would not, spare the time which would give them a fair chance to recover health or to derive much benefit from treatment—a result unsatisfactory to all concerned.



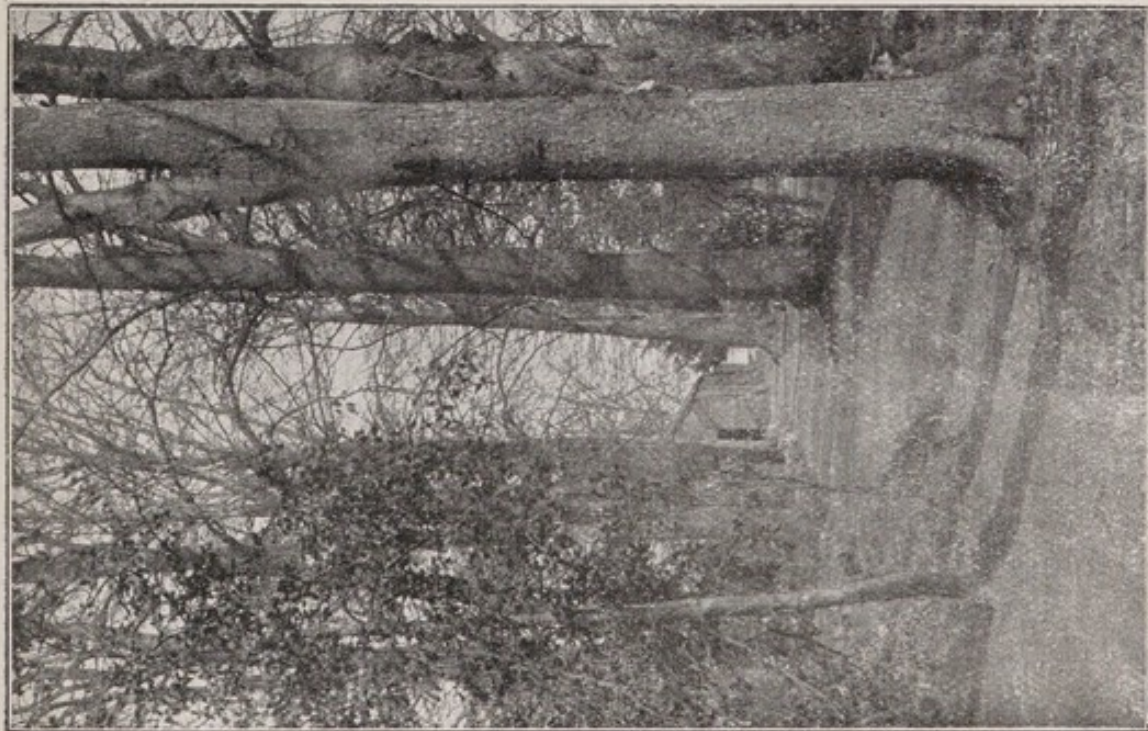
VIEW IN GROUNDS.

I wish to express my thanks to the Committee of Management for the valuable assistance they have continued to give me, and my deep regret at the great loss sustained by the death of Mr. R. H. Miller, who had been an auditor of the Institution accounts since 1910.

I am, gentlemen,

Your obedient servant,

F. S. D. HOGG.



VIEWS IN GROUNDS.



VIEW OF THE HOUSE FROM ISLAND.

Copyright 1907 by J. M. W. T. Co.

APPENDIX.

Some particulars of 1645 patients discharged.

Number of Patients:—

Under the Act...	...	629
Private	1016
		<hr/> 1645

Term of Residence:—

12 months and longer...	209
9 " ...	72
8 " ...	32
7 " ...	4
6 " ...	263
5 " ...	54
4 " ...	82
3 " ...	528
2 " ...	99
1½ " ...	53
1 month or less	249
	<hr/> 1645

Age:—Between 17 and 20 years	1
" 20 and 30 "	216
" 30 and 40 "	636
" 40 and 50 "	524
" 50 and 60 "	217
" 60 and 70 "	47
" 70 and 80 "	4
	<hr/> 1645

Average age of all Patients 37'8

Previous Residence of Patients:—

Africa (East) ...	3
Africa (South) ...	32
Africa (West) ...	1
America (Central) ...	2
America (South) ...	25
Australia ...	13
Borneo ...	1
Canada ...	20
Channel Isles ...	9
China ...	1
Egypt ...	4
England—London ...	493
Provincial ...	739
France ...	19
India, Ceylon, Burmah	30
Italy ...	1
Ireland ...	93
Japan ...	4
Madagascar ...	1
New Zealand ...	8
Persia ...	1

Previous Residence

of Patients (Continued):—

Russia ...	3
Scotland ...	83
Straits Settlements	6
Switzerland ...	3
United States ...	11
Wales ...	38
West Indies ...	1
	<hr/> 1645

Education:—

College ...	416
Good ...	1166
Elementary ...	63
	<hr/> 1645

Marriage:—

Married ...	856
Single ...	679
Widowed ...	110
	<hr/> 1645

Occupation:—

Accountants ...	19
Agents ...	8
Artists and Theatrical	22
Architects ...	10
Auctioneers ...	4
Bankers ...	12
Barristers-at-Law...	24
Builder ...	1
Cable Official ...	1
Caterer ...	1
Chemists ...	17
Civil Servants ...	35
Clerks ...	88
Clerks in Holy Orders	35
Commercial Travellers	19
Company Directors	4
Confectioners ...	7
Contractor ...	1
Corn Broker ...	1
Dentists ...	7
Distillers, Brewers, &c.	36
Drapers ...	12
Engineers ...	63
Engravers ...	2
Farmers (Market	
Gardeners, &c.)	79
Garage Proprietor ...	1
Grocer ...	1
Horse Trainer ...	1
Hotel Proprietors...	12

Occupation (Continued) :—

House Decorators...	...	3
Jewellers	3
Journalists	21
Land & Commission Agents	...	7
Librarians	2
Manufacturers	82
Marine Merchant Service	...	14
Medical Practitioners	130
Merchants	178
Military Officers	91
Naturalists	2
Naval Officers	14
No occupation	380
Planters	14
Photographer	1
Professors of Music	9
Publishers	5
Railway Official	1
Rancher	1
Secretaries	3
Schoolmasters, Tutors, &c.	...	29
Ship Owners	5
Shopfitter	1
Solicitors	63
Stockbrokers	22
Students of Medicine	14
Students in Law	3
Surveyors	4
Tailors	8
Tea Traders	4
Tobacconists	2
Veterinary Surgeons	3
Underwriters	3

1645

Family History :—

Insanity or Inebriety and Inebriety
in about 11 per cent. Inebriety
in about 50 per cent.

Temperament :—

Nervous	993
Nervo-Sanguine	250
Passionate	33
Phlegmatic	113
Sanguine	256

1645

Associate Habits :—

Bromidia	2
Cannabis Indica	3
Chloral	16
Chloroform	1
Chlorobrom	1
Cocaine	26
Heroin	6
Morphia	82
Morphia and Cocaine	21
Opium or Chlorodyne	27

Associate Habits (Continued) :—

Paraldehyde	7
Sulphonal	6
Tobacco	1518
Trional	4
Veronal	13

Drinking Habits :—

Regular	1104
Periodical	495

Frequency of Periods :—

Every week	8
„ 2 weeks	12
„ 3 „	20
„ 4 „	47
„ 6 „	10
„ 2 months	39
„ 3 „	16
„ 4 „	3
„ 12 „	3
Very irregular	358

496

Delirium Tremens :—

Patients who have had 1 attack	...	258
„ „ 2 attacks	...	119
„ „ 3 „	...	26
„ „ 4 „	...	6
„ „ 5 „	...	2
„ „ 6 „	...	5
„ „ 7 „	...	1
„ „ 13 „	...	12

429

Ordinary Habits :—

Described as Social	1570
„ Solitary	75

1645

Kind of Inebriant used :—

Absinthe	2
All Spirits	264
Beer	44
Beer and Spirits	290
Brandy	56
Drugs without Alcohol	47
Gin	16
Whisky	611
Wine	40
Wine and Spirits	109
Various	166

1645

Average of time addicted in all cases
9 years.

Previous Residence in other Similar Institutions:—

Once	267
Twice	123
Three times	35
Four times	12
Five times	7
Six times	7
Insane Asylum	14

Exciting Cause:—

Ill-health	187
Influence of occupation—	
Commercial travelling	14
Wine & Beer Merchants	33
Cattle Salesmen ...	2
Stock Exchange ...	2
Colonial Life	29
Army Life	19
Retail Corn Business	1
Rubber Works	1
Jobmaster	1
Journalists	9
Theatrical	2
Injury	31
Nervous Shock—	
War Service	34
Domestic trouble ...	133
Business worry... ..	112
Fight with Madman...	1
Financial loss	15
No occupation	52
Not assigned	80
Overwork	77
Rum Ration in Navy ...	1
Sexual excess... ..	6
Sociability	802
Air Raids	1

1,645

Complicating Diseases:—

Adenoids	1
Abductor (Laryngeal)	
Paralysis	1
Abscess of Antrum ...	3
Alcoholic Convulsions...	17
Alcoholic Neuritis ...	77
Amblyopia	13
Amnesia	2
Anal Fistula	7
Ant. Poliomyelitis ...	3
Appendicitis	3
Asthma	23
Bronchitis (acute)... ..	2
Bronchitis (chronic) ...	17
Cataract... ..	1
Caries of Rib... ..	1
Cellulitis	1
Cirrhosis of Liver... ..	14
Colitis, Ulcerative ...	2
Congenital Tremors ...	2

Complicating Diseases (Cont.):—

Constipation (chronic) ...	57
Cystitis	1
Delirium Tremens	7
Delusional Insanity ...	14
Dercum's Disease	1
Diabetes	11
Duodenal Ulcer	1
Dysentery (chronic) ...	2
Dyspepsia (chronic) ...	13
Eczema	8
Exophthalmic Goitre ...	2
Epilepsy	6
Floating Kidney	3
Fracture of Bones	4
Gall Bladder (Suppurating)	1
Gangrene	1
General Debility	56
General Paralysis	1
Glycosuria (Intermittent)	6
Gonorrhœa	13
Gout	21
Hæmorrhoids	16
Hemiplegia	5
Hernia	3
Hyperidrosis	1
Hypochondriasis	3
Hypothyroidism	3
Hysteria	6
Keratitis	1
Menière's Disease	5
Migraine	7
Morbus Cordis	47
Nasal Polypus... ..	3
Œsophageal Stricture ...	1
Ozæna	1
Perforating Ulcer	1
Phlebitis	3
Phthisis	12
Pneumonia	4
Progresive Muscular Atrophy	1
Prostatitis (acute)	2
Pseudo Ataxy	2
Psoriasis	13
Pulmonary Thrombus ...	1
Pyelitis	1
Rectal Abscess	1
Remittent Fever	9
Renal Colic	1
Renal Disease... ..	48
Rheumatism (chronic) ...	27
Retinal Hæmorrhage ...	2
Rhinitis (chronic)	10
Sciatica	2
Syphilis	32
Trigeminal Neuralgia ...	2
Urethral Stricture	9
Varicocele	1
Vesical Tuberculosis ...	1
Xeroderma Pigmentosa...	1

Discharged:—

Efflux of time	1419
Further treatment unnecessary ...	31
Illness	36
Unsuitable for treatment...	68
Urgent private affairs ...	91
	<hr/> 1645

Average length of period under treatment of all patients discharged, about $20\frac{1}{2}$ weeks.

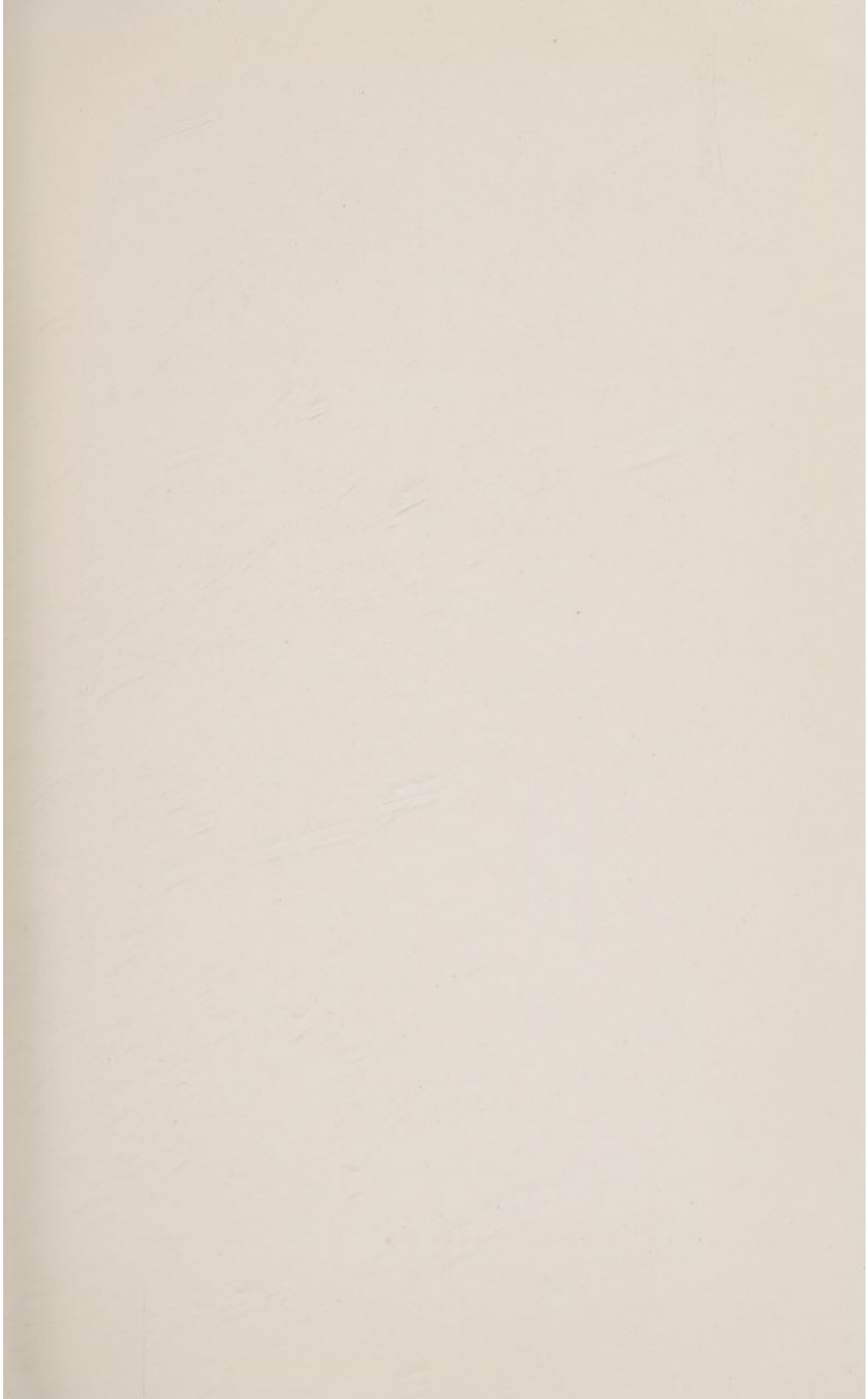
Re-admitted 182

After-History:

	per cent.
Doing well...	about 40
Improved	6
Not improved	22
Insane	2
No news obtainable or dead	22
Discharged unsuitable for treatment or transferred elsewhere ...	6

ADMISSIONS AND DISCHARGES OF PATIENTS DURING YEAR ENDING 31st JANUARY, 1923.

Undischarged Jan. 31st, 1922, under Inebriates Act	12	Discharged under Inebriates Act	24
„ Private Patients	10	„ Private Patients	56
Admitted under the Act	24	Undischarged Jan. 31st, 1923, under Act	12
„ as Private Patients	55	„ Private Patients	9
	<hr/>		<hr/>
Total	101		101



DALRYMPLE HOUSE

FOR THE

TREATMENT OF INEBRIETY

THE CEDARS, RICKMANSWORTH, HERTS.

Train Service from London: G.C.R. (Marylebone) 30 minutes; Met. Ry. (Baker St.) and L. & N.W. Ry. via Watford.

Licensed under the Inebriates Acts, 1879—1899.
Gentlemen received privately, and under the Acts.

Honorary Consulting Physician:
E. CLAUDE TAYLOR, M.D., F.R.C.S.

Resident Medical Superintendent:
F. S. D. HOGG, L.R.C.P., LOND., M.R.C.S., ENG.

OPINIONS OF THE PRESS.

Times.—"A very pleasant house, standing in about five acres of beautiful grounds, admirably adapted to the purpose it is intended to fulfil."

Lancet.—"Practitioners having dipsomaniac patients cannot do them a greater kindness than to urge them to use this Home, with its regulated life and pleasant surroundings."

British Medical Journal.—"Charming grounds. A very pleasant view from the public rooms, the house standing on a terrace of 30 feet above the River Colne. Spacious dining hall and kitchen. The billiard-room is a prominent feature."

Morning Post.—"Admirably adapted to secure a fair trial of the provisions of the Habitual Drunkards Act."

Sanitary Record.—"A charming country residence, replete with every comfort."

Standard.—"Complete and satisfactory."

Medical Press.—"A charmingly-situated house, light and airy."

Journal of Inebriety.—"May well serve as a model. One of the best equipped inebriate asylums in Europe."

For terms, apply to the Resident Medical Superintendent,

F. S. D. HOGG,
THE CEDARS, RICKMANSWORTH, HERTFORDSHIRE.

TELEPHONE: 16 RICKMANSWORTH.



