

Annual Art Council report : 1996/97 / Art Council.

Contributors

Art Council

Publication/Creation

[United Kingdom] : Art Council, 1997

Persistent URL

<https://wellcomecollection.org/works/yhhtyat3>

License and attribution

You have permission to make copies of this work under a Creative Commons, Attribution license.

This licence permits unrestricted use, distribution, and reproduction in any medium, provided the original author and source are credited. See the Legal Code for further information.

Image source should be attributed as specified in the full catalogue record. If no source is given the image should be attributed to Wellcome Collection.



Wellcome Collection
183 Euston Road
London NW1 2BE UK
T +44 (0)20 7611 8722
E library@wellcomecollection.org
<https://wellcomecollection.org>

WELLCOME
LIBRARY

Ann Rep

W228.

BES

A78

1996/97

Annual Art Council Report

1996/97



cover: 'Cake Lady' a Womens project.



22503551983

A.A.C. Committee Members 1996/1997.

Adrian Plant:Tate Gallery Liverpool.

Rebecca Owen:Foundation for Art and Creative Technology.

Emma Anderson:North West Arts Board.

Carolyn Murray:Artreach.

Robert Bowness:Netherton Arts Centre.

Suzie Walker:Southport Arts Centre.

Vincent Lavell:Artist.

Brian Chapman:Hospital Arts(Chair AAC).

Peter Green:Honorary President.

Gary N:Patient Representative.

Adrian N:Patient Representative.

Tracey B:Patient Representative.

Steve P:Patient Representative.

Jose Vallerino: Rehabilitation Department Pottery.

Percy Hoggins:Patient Support.

Brenda Jones:Manager Education and Training.

Steve Keown:Rehabilitation Manager.

Gerald Beserakumo:Community Link.

Heather Alderson:Assistant to Arts Co-ordinator.

Ruth Preece:Arts Co-ordinator.

Editorial: The Journal of the American Statistical Association

The Journal of the American Statistical Association is a leading journal in the field of statistics.

It is published by the American Statistical Association.

The Journal is devoted to the publication of original research papers.

It also includes reviews of books and articles.

The Journal is a member of the International Statistical Institute.

It is a member of the American Statistical Association.

The Journal is a member of the American Statistical Association.

It is a member of the American Statistical Association.

The Journal is a member of the American Statistical Association.

It is a member of the American Statistical Association.

The Journal is a member of the American Statistical Association.

It is a member of the American Statistical Association.

The Journal is a member of the American Statistical Association.

It is a member of the American Statistical Association.

The Journal is a member of the American Statistical Association.

It is a member of the American Statistical Association.

The Journal is a member of the American Statistical Association.

It is a member of the American Statistical Association.

The Journal is a member of the American Statistical Association.

6th Annual report

We hope you find the content of this our 6th Annual report informative, I won't waste time writing about what we've done over the past year, instead I will leave you to read about it! What I will do is complete an index of the images on the various pages (because I forgot to include them when I was preparing the report).

Front cover: `Rebel` from residency with Bobby Baker.

February: Rakkaku Kite design with Charlie Charlton.

March: Sculpture `Crepe and Straw` with Lin Holland.

April: Garden project with Helen Kitchen.

May:(top) Rehearsal of Memory (bottom) Encaustic art.

June: Barge trip with participants from Assembly project.

July:Royal Opera (top) Sculpture `Gateways` (bottom) with Andrew /Small.

August:(top) Bat the Rat from `Garden Fete made by patients (bottom) ceramic work from 20th Annual Arts Crafts and Literature exhibition.

September(top) Abstract from 20th exhibition (bottom) Brenda admiring work at Koestler exhibition.

October:Crepe Collage winning entry in exhibition (Special Care exhibit with Michelle John).

November: `Sanctuary project` from Monday evenings with Sue McHugh.

December:(top) `Alien` (original sculpture by Tony Conroy) (below) `Star Trek` Xmas party game, space buggies driven by Brian, Hospital Art and Heather, Assistant to Arts Co-ordinator.

January `97:(top) food painting residency with Bobby Baker for Women (below) ceramic painting part of Monday evening projects.

February `97:(top) preparing the `cake lady` sponge and butter icing. (Middle) Macro photography Womens ward based projects. (Bottom) Detailed figure in food as part of International Video Positive (FOUNDATION FOR ART AND CREATIVE TECHNOLOGY.

Ruth Preece Arts Co-ordinator.

We hope you find the contents of the new Journal report interesting. I have a great time
writing about what we have done over the past year. Indeed I will have you to read about it.
What I will be doing in the future is to write on the various papers I receive. I begin to
include them when I am preparing the report.

I have seen the report from the meeting with the Royal Society.

Professor Huxley's report on the Royal Society is very interesting.

Professor Huxley's report on the Royal Society is very interesting.

After the meeting with the Royal Society.

Professor Huxley's report on the Royal Society is very interesting.

After the meeting with the Royal Society.

After the meeting with the Royal Society.

After the meeting with the Royal Society.

After the meeting with the Royal Society.

After the meeting with the Royal Society.

After the meeting with the Royal Society.

After the meeting with the Royal Society.

After the meeting with the Royal Society.

After the meeting with the Royal Society.



Ashworth Hospital Authority

20 March 1997

Dear Friends

Another year! Success, enjoyment and quality are becoming by-words for the work of the Arts Council which I always feel produces the opportunity for exploration within the unique environment of Ashworth Hospital. A unique environment demands unique people and, as usual, those associated with the Council's work are ever thus. On behalf of the patient group - thanks.

The continuing golden thread of commitment by creative people from throughout the wider Arts community can only be applauded and the range and essence of the year's work is reflected in this heartening annual report.

The launch of 'Rehearsal of Memory' has received international positive acclaim from those who have experienced its powerful presence. The opening of 'The Exchange', the culmination of significant collective effort by patients, staff groups and the Hospital Arts Team, was crowned by the support of the Royal Opera.

In a real sense of history the 20th Annual Arts, Crafts and Literature Exhibition took place, with the usual high level of creativity. To name a few contributors, Andrew Small's (Gateways) took root and Bobby Baker was in residence with women patients.

The Charity Arts Project this year is working to support 'Claire House' a remarkable Hospice Project for children and we must thank them for allowing us to be one of the many who support their efforts. This work, as well as that of the Council, was recognised and highly commended by the 'Business in the Community' Regional Awards. I was very proud to be at this presentation on your behalf.

An educational module, 'The Arts in Forensic Care' has been constructed for accreditation by the Ashworth Centre through it's associated University. This will be a first in any setting providing mental health services and will place the Arts rightfully as a part of developing mental health nursing.

At last Ruth Preece, the Arts Co-ordinator, after much suffering and valiant efforts over the years secured the services of an Assistant! Finally, Star Trek was the Christmas Party theme which saw alien space mobiles in a secure setting - with the re-launch of Star Wars what will Christmas 1997 bring! Oscar Wilde's 'Lady Windermere's Fan' (1891) reminds us that at times, "we are all in the gutter, but some of us are looking at the stars". This reminds us to all keep gazing in 1997/98, which I am sure will be another successful year.

PETER GREEN
Honorary President

Chair's Annual Report

Once again The Ashworth Arts Council has provided a rich and varied programme of arts activities for patients. A zillion thanks to all those who have helped continue our successes.

Testament to this we received a Highly Commended certificate from the Business in the Community Awards scheme.

Our thanks as always go to Ruth and all her hard work for organising, promoting and fund-raising to enable visual arts, music, drama, literary and new technology arts to enter into and enrich the cultural life of the hospital.

We welcome Heather Alderson who is now full time assistant to Ruth, the Arts Co-ordinator for Ashworth Hospital. It has been acknowledged for some years now that this post was necessary to further develop the scope and scale of the arts programme involving more people in creative pursuits.

A further long term need has also been developed this year, a training course for staff in the appreciation and understanding of the role of contemporary arts and benefits to patients (and the hospital as a whole). A National Training Module has been proposed and is now awaiting verification.

The past year has also seen a redressing of the balance of creative activity to involve more female patients on the East site of the hospital. Having been involved myself with projects and having spoken to many of the care staff and Advocates there is a great need here which is now being met. We keep our fingers crossed with regard to a lottery application to further expand this area of work.

The breadth and depth of the artistic development in the Council's work is important but the quality is central to progress. This year we have brought in some outstanding artists such as Andy Small and Bobby Baker.

It is important to keep pushing the artistic boundaries and creating new links with artists of this calibre.

Well done everyone !

BRIAN CHAPMAN

Chair's Annual Report

Once again The Ashworth Arts Council has provided a rich and varied programme of art activities for patients. A ribbon thanks to all those who have helped continue our success. Testimony to this we received a highly Commended certificate from the Business in the Community Awards scheme.

Our thanks go always to Brian and all her hard work for organising, pursuing and fund-raising to enable visual art, music, drama, literary and new technology arts to enter and enrich the cultural life of the hospital.

We welcome Frances Johnson, who is now full time assisting to Brian, the Arts Co-ordinator for Ashworth Hospital. It has been acknowledged for some years now that the past year needs to be further developed the scope and range of the arts programme involving more people in creative pursuits.

A further long term goal has also been developed this year, a training course for staff in the organisation and understanding of the role of contemporary arts and health in patients (and the hospital as a whole). A National Training Module has been proposed and is now working towards it.

The past year has also seen a reorganisation of the balance of creative activity to involve more health partners on the staff side of the hospital. Planning has involved myself with patients and family spoken to many of the staff and staff. Activities have been well received which is now being run. We have our first year ended with regard to a health experience to include extend the area of work.

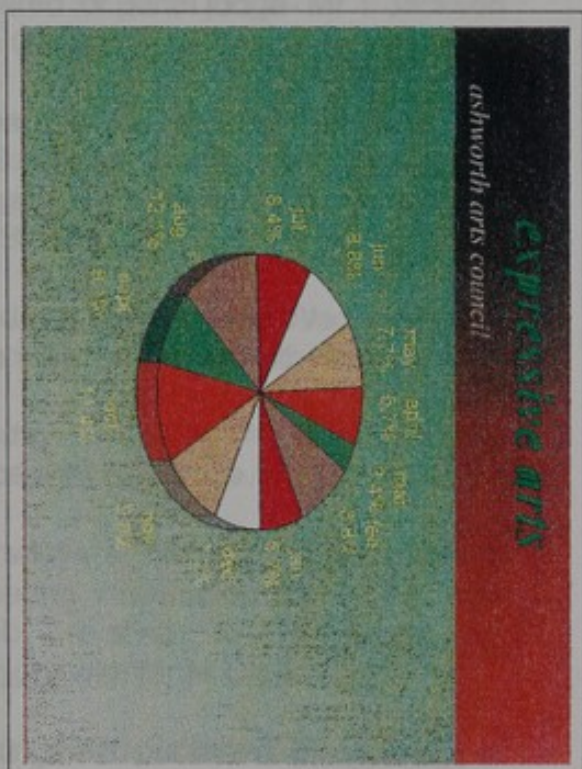
The breadth and depth of the artistic development in the Council's work is important for the health experience in progress. This year we have managed to make outstanding achievements in visual, drama and music. It is important to keep building the artistic experience and creating new initiatives in the future.

With thanks everyone!

BRUCE THOMAS

attendance

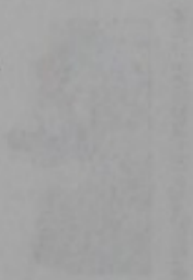
• multifarious arts activities



ASHWORTH ARTS COUNCIL
ANNUAL REPORT



MULTI FARIOUS ARTS PROJECTS



attendance

• multiracial activities



FEBRUARY

Student placement Geraldine Bracey.

Visit to Leicester Armley H.M.P. for launch of research document of Art Activities in Prisons (Yorkshire.Humberside region).

A.A.C. short listed for National Arts Award (I.B.M) exhibition of art work prepared for panel judge- Mr T Jackson Tate Gallery.

Preparation for Lecture/seminar as part of European conference Theatre in Prisons to be delivered by myself and Mrs B Jones.

Mondays Tuesday and Wednesdays = Assembly Hall project with Hospital Arts.

Monday evenings = Contemporary dance with Ray Price.

Thursdays = Patients I.T department, preparing information for World wide Webb, relating to Rehearsal of Memory with Mr M Clarke.

Meetings with publishers Bookworks of London, and Artec re: launching C.D.ROM Rehearsal of Memory.

Planning meeting with S Walker prior to introduction of Drama series.

Charity Arts planning meetings.

Introduction to Sculpture workshops with V Lavell on Monday evenings.

Produced additional copies x 50 of Annual report as requested.

Assisted with Sawetan fund raising evening.

Arranged special project Rakkaku kite designing with C Charlton.

Commenced series of Sculpture workshops.

Charity Arts Jumble Sale 26th Feb.

Confirmed booking The Royal Opera for Patients celebration of the opening of The Exchange (Assembly Hall).

Drama series commenced 27 Feb Tuesday mornings.



Assisted with Swanton fund raising
evening

Assisted special project Reykjavik like
designing with C. Christian

Completed series of Swanton
waterways

Charity Arts Auction Sale Jan Feb

Continued working The Royal Opera
for Paines celebration of the opening
of The Exchange (Assembly Hall)

Thames scheme commenced 27 Feb
Thursday morning



JANUARY

Spent pleasant Christmas holiday
Visit to Lancaster, Arrived 12th Dec for
launch of theatre, dinner at An
Activities in Paines
(Yorkshire (Leeds) region)

A.A.C. short listed for National Arts
Award (1984) entered on 2nd work
prepared for panel judge Mr T. Jackson
1st Feb

Preparation for Leeds exhibition as part
of European Commission Project in
Britain to be followed by event and
Mrs S Jones

Monday 1st Feb - Leeds and Leeds -
Assembly Hall closed with National Arts

Monday evening - Leeds -
dinner at New Line

Thames - Paines (1st report)
preparing information for visit to
Vand, meeting to discuss and
Monday with Mr Jones

Meeting with Leeds Leeds and
London and Leeds to launch
C.D.R.M. 25th anniversary of Leeds

Thames meeting with S. Webb or part to
discussion of Paines series

Charity Arts evening Leeds

Introduction to Leeds Leeds
with V. Lewis on Monday evening

Produced additional copies of 20 of
Annual report as requested

MARCH

Student placement Geraldine Bracey.

Article prepared and sent on Arts project up date for inclusion in Patients magazine.

Designed and made Golden Boot Award as requested by David Eden, for his youth football team.

Monday Evenings Sculpture workshops with Lin Holland

Mondays and Tuesdays Hospital Arts Assembly Hall project.

Tuesday morning drama series with Suzy Walker.

14th March attended Artec to agree W > W > W Page.

Arranged visit of departments for prospective student placements.

Garden Fete planning meetings.

Charity Arts planning meetings.

27th March Charity Arts event.

Meeting re: East development project for multi functional building conversion as part of Hospital Arts future programme.



Student placement in distribution theory.

Article prepared and sent to Arts project
on the 10th instance to English magazine.

Received and mailed to the Arts project
prepared by David P. for the young
London team.

Monthly meeting of the Arts project
with Ian Hargreaves.

Meeting with David P. and
Anthony Hargreaves.

Meeting with David P. and
Anthony Hargreaves.

10th March meeting with
W. & W. P. 1972.

Meeting with David P. and
Anthony Hargreaves.

Meeting with David P. and
Anthony Hargreaves.

Meeting with David P. and
Anthony Hargreaves.

Meeting with David P. and
Anthony Hargreaves.

Meeting with David P. and
Anthony Hargreaves.
of the Arts project.

APRIL

Student placement x 1.

Mondays and Tuesdays Arts project in Assembly.

Monday evenings Sculpture with Lin Holland.

Tuesday mornings Drama with Suzy Walker.

Tuesday all day Garden photography project.

Preparation for Seminar as part of European conference for Theatre in Prisons and Probation service.

Delivered above seminar on 11th April assisted by Brenda Jones Manager Education and Training.

Delegate at above conference 10th to 13 April.

Prepared invitations for Official opening of the Assembly Hall.

Planning meetings with Jed Beresekumo Community Link Person, Special Cultural awareness projects.

Evening Kite design project with Charlie Charlton and Lin Holland.

Garden Fete planning meetings.

Charity Arts meetings.

Arranged and took the drama group to an evening performance of The Merry Wives of Windsor.

Planning meetings with Rebecca Owen 'Moviola' re Womens Multi Media workshops.

Interviewed and prepared itinerary for x 3 University student placements. Studying Psychology and fine Art.

Interviewed and arranged placement for student placement from Paul McCartney Institute (L.I.P.A) Liverpool Institute of Performing Arts.

Interviewed prospective Sculptor in Residence for a Summer project.





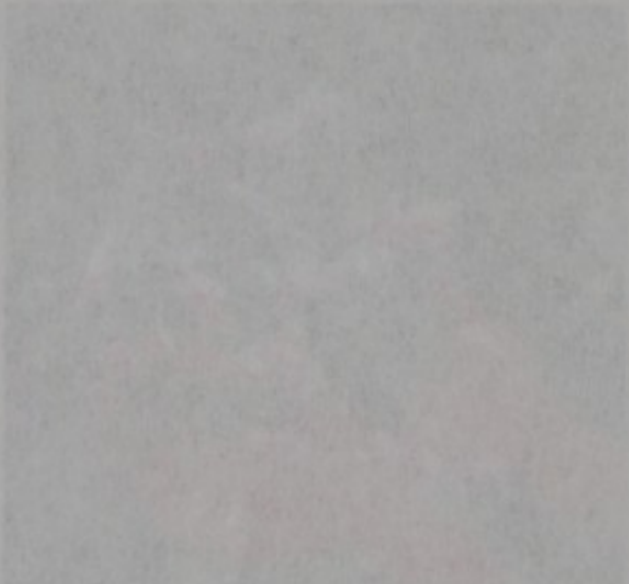
Student placement in 1991
Monitors and Teacher: All projects w
Assembly
Monthly meetings: Students with the
Inland
Teacher meetings: Focus on New Writers
Teacher all day: Language development project
Preparation for students as part of language
development for students in Inland and
Orange counties
Delivered some projects on 11th April
assisted by Inland and Orange Education
and Training
Participants at these conferences: 100 in 1991
April
Prepared, reviewing the OERD reports of
the various schools
Planning meetings with the Board of
Education and the Board of Cultural
Education project
Planning and development with Central
Queensland and the OERD
General Public planning sessions
Queensland Arts Network
State and local arts groups to an
extent in the area of the OERD
of Inland

Planning meetings with Inland OERD
Inland, in Western North Media
Workshops

Interviewed and prepared reports for a
language student placement project
Psychology and Arts

Interviewed and prepared reports for
student placement from Park MacQuarrie
Inland (1991) Language Institute of
Education Arts

Interviewed projectors, reports in
preparation for a OERD project



MAY

Prepared details and venue for launch of **Rehearsal of Memory**.

Planning meeting for cultural awareness groups.

Student placements x 2.

Hospital Arts Assembly project Mondays and Tuesdays.

Drama workshops Tuesday mornings.

Sculpture workshops Monday evenings.

Gardens project Tuesdays.

Received grant from **NORTH WEST ARTS BOARD** £1,500. for Artist in residence.

Acquired new storage accommodation sited, and painted.

Assembly floor stripped and sealed.

Interviewed by Anna Douglas for CD ROM **`Guide for Educationalist Arts Officers and community agents`**.

Garden Fete preparation meetings.

Charity Arts collaborate with **Claire House**.

Appointed Chairperson of Charity Arts Project.

Ashworth Arts Council meeting.

Charity Arts A.G.M.

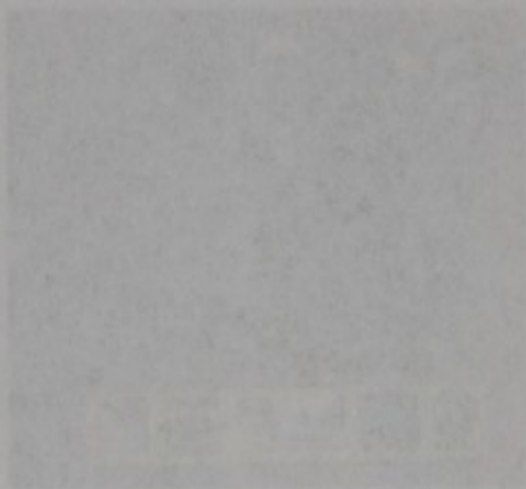
Arranged scenery for drama production.

Grant received from **North West Arts £1,500**.

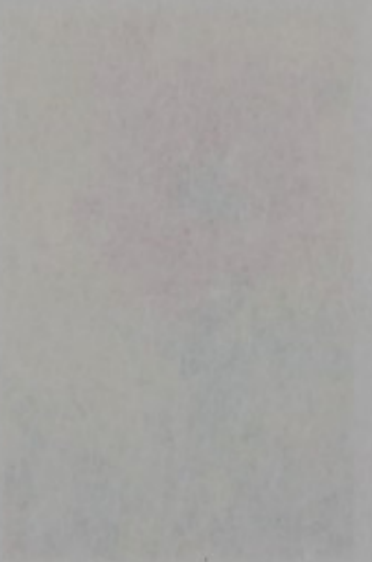
Presentation of **Rehearsal of Memory** to Hospital Directors.

Interview for CD ROM for Internet a guide for Educationalist Arts Officers and Community workers.





Proposed details and scope for study of the...
 Planning meeting for cultural preservation group.
 Student observation x 2.
 Hospital Arts Assembly program meetings and surveys.
 Brown workshop Tuesday evenings.
 Sculpture workshop weekly evenings.
 Garden project Tuesday.
 Received from the WEST AFRICAN BOARD...
 Acquired new storage system for...
 Assembly then stopped and tested.
 Interviewed by Anna through the CD ROM...
 Garden beds preparation meeting.
 Cherry Arts collaboration with...
 Applied Workshop of Cherry Arts Project.
 Assembly Arts Council meeting.
 Cherry Arts A.V. M.
 Assembly meeting for...
 Guest received from...
 Presentation of...
 Interview for CD ROM for...
 received.



JUNE

Monday evenings Sculpture series with Lin Holland;

Tuesday morning Drama series with Suzy Walker.

Interviewed Andrew Small, Sculptor, re a Residency in R.T.S. concrete department.

Distributed Arts exhibition entry forms, for our Annual exhibition.

Four Students on Placement experience: Jo Bracey (six month placement, has since been accepted for Art Therapy Degree course at Goldsmiths).

Paula Capell from L.I.P.P.A. Liverpool Institute of Performing Arts.

Rachael Roberts and Joanne McMahon: Liverpool University=one month summer placement.

Performance evening from hospital Drama group **Stairway Theatre Group**, who performed **Dogs Hamlet**, this evenings entertainment was supported by the Hospitals band **Technical Itch**.

Assembly hall project continues, with preparations for the Official opening and Patients celebration evening.

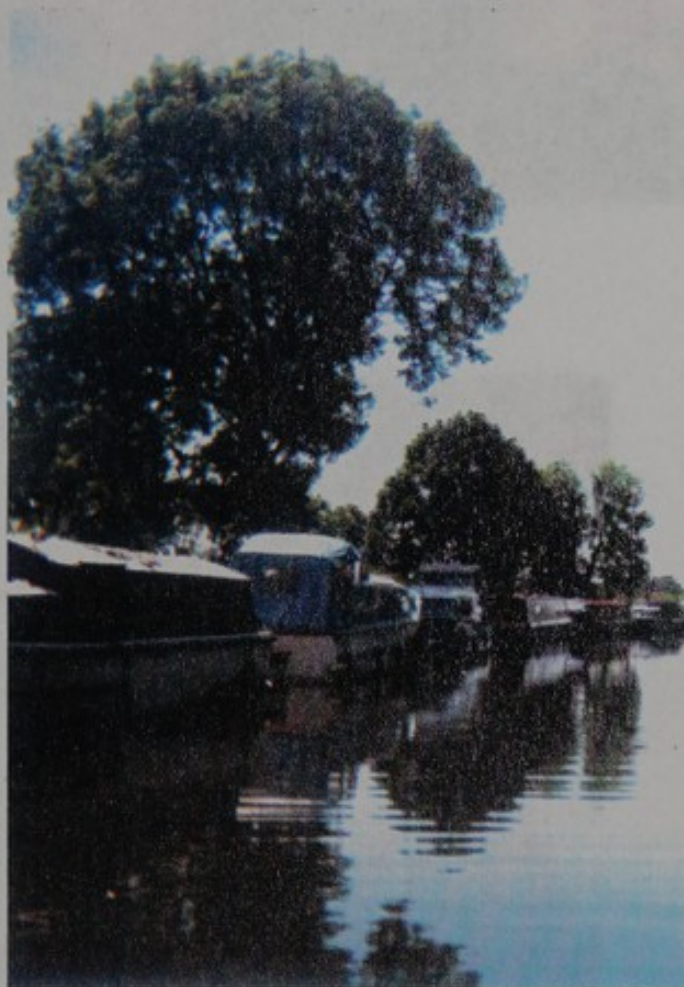
Multi cultural project **`Restating Experience`** development planning meetings.

Sculpture residency in R.T.S. Concrete department with Andrew Small confirmed.

Two trips organised:

Barge trip for Assembly project participants, in recognition of their work. Back stage visit to Southport Arts centre, Cancelled (the Art Centre had double booked, we had been told it was closed to the public for our visit).

B.B.Q in aid of Charity Arts, this was a tremendous success, with over seventy Patients attending.



Hange trip for Assembly project
 participants in recognition of their work.
 Back stage visit to Soudpout Arts Centre,
 Cambridge (the Arts Centre had double
 booked, we had been told it was closed to
 the public for our visit)

B.B.O. in aid of Charity Arts, this was a
 performance evening with local society
 friends attending.



JUNE

Meeting with Soudpout artists with L.A.
 Roberts
 Evening meeting Soudpout artists with Soudpout
 Roberts

Performance Soudpout Artists, Soudpout, to a
 performance in R.T.S. Soudpout Department.

Performance Arts exhibition evening, Soudpout, for
 our Annual exhibition.

For Soudpout Arts exhibition evening, Soudpout, for
 Soudpout Arts exhibition evening, Soudpout, for
 been accepted for Arts exhibition evening, Soudpout,
 course at Cambridge.

Performance Soudpout Artists, Soudpout, to a
 performance in R.T.S. Soudpout Department.

Performance Soudpout Artists, Soudpout, to a
 performance in R.T.S. Soudpout Department.

Performance Soudpout Artists, Soudpout, to a
 performance in R.T.S. Soudpout Department.

Performance Soudpout Artists, Soudpout, to a
 performance in R.T.S. Soudpout Department.

Performance Soudpout Artists, Soudpout, to a
 performance in R.T.S. Soudpout Department.

Performance Soudpout Artists, Soudpout, to a
 performance in R.T.S. Soudpout Department.

Two more exhibitions

JULY

Monday 1st = Official opening of The Exchange with invited guests.

Monday 8th = Patients Celebration evening with The Royal Opera Company.

Two Students for experiential training in the Arts.

Planning meetings with Foundation for Art and Creative Technology re Womens Multi Media project with Bobby Baker. Programmed for next February.

Back stage visit to Southport Art Centre, cancelled-the centre had double booked.

Drama series continues Tuesday mornings.

Charity Arts planning meetings.

Monday evening Arts workshops.

Preparations for annual Arts Craft and Literature exhibition.

Forward planning for Arts projects.

Sculpture project with Andrew small 'Gateways' in R.T.S. concrete dept.

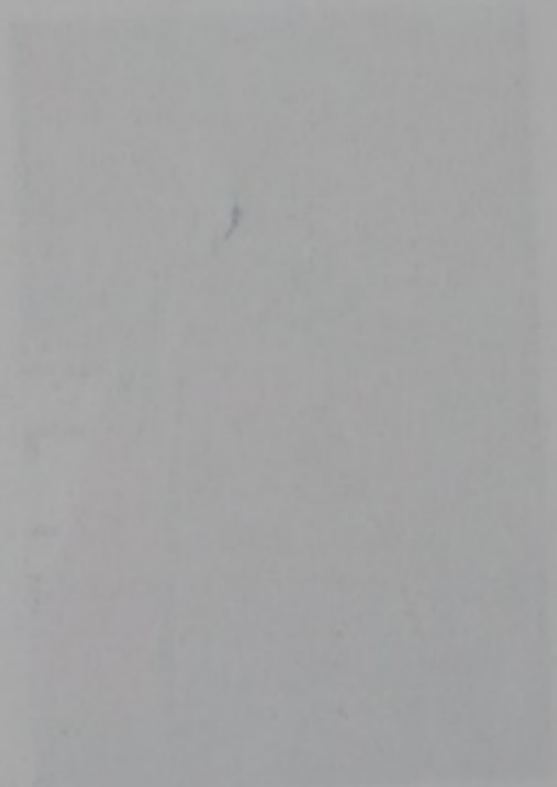
Meeting with Adrian Plant Tate Gallery and George Cochran Bankside Development Manager Tate London.

15th = Barge trip for patient participants in assembly arts project team.

Lottery grant completed.

Set up exhibition for official visit.





NY

... in ...

... ..

... ..

... ..

... ..

... ..

... ..

... ..

... ..

... ..

... ..

... ..

... ..

... ..

... ..

AUGUST

`Fun Day` with Charity Arts Project, raising nearly four hundred pounds.

Tuesday morning Drama series with Chris Robinson.

Facilitated short Summer course in Patients Education in Encaustic Art.

Official opening of the `Gateway` sculpture residency with Andrew Small.

Collecting Art works, and making preparations for our 20th Annual Arts Crafts and Literature exhibition.

Charity Arts planning meetings.

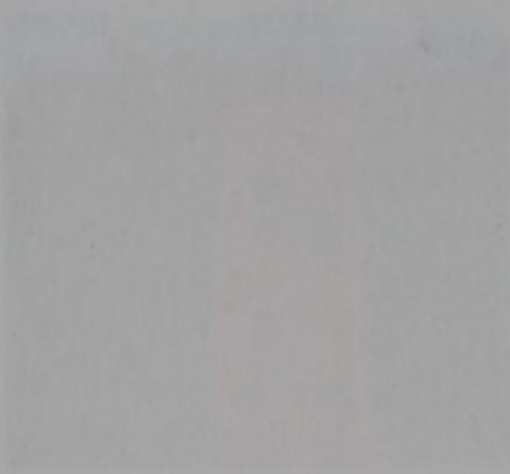
Ashworth Arts Council Quarterly meeting- Agendas and minutes.

Judging: **-20th Annual Arts Crafts and Literature exhibition** (judged by external artist/Art agency personnel, members of A.A.C.

Completed lottery bid for Womens project.

Sir George Day award: application made for Ashworth Arts Council.





1. The first part of the report deals with the general situation of the country.

2. The second part of the report deals with the economic situation of the country.

3. The third part of the report deals with the social situation of the country.

4. The fourth part of the report deals with the political situation of the country.

5. The fifth part of the report deals with the cultural situation of the country.

6. The sixth part of the report deals with the environmental situation of the country.

7. The seventh part of the report deals with the international situation of the country.

8. The eighth part of the report deals with the future prospects of the country.

9. The ninth part of the report deals with the conclusion of the report.

10. The tenth part of the report deals with the annexes of the report.

11. The eleventh part of the report deals with the bibliography of the report.

12. The twelfth part of the report deals with the index of the report.



SEPTEMBER

Charity Arts Project meetings
planning fund raising events.

Sculpture with Hospital Arts.

Monday 9th 20th Annual Arts Crafts
and Literature Presentation Evening.

Tuesday 10th Presented awards to
Patients unable to attend last
evenings Awards night.

Drama workshops.

Planning Patients attendance to the
launch of 'Rehearsal of Memory', a
Private view in the Bluecoat
Chambers, Liverpool.

Monday evening workshops
commence with Sue McHugh -
Sanctuary.

'Restating Experience' development
meetings with Jed Bersekumo.

Contacted Westbrook packaging,
arranged to collect donations of
materials.

Womens Special project - arranged
to meet with John Foster to
implement programme plan, meeting
with Michelle John to discuss her
involvement, in relation to producing
textile applique.

Attended conference in Edinburgh
'From Rodin to Giacometti'.

Thursday 26th attended Koestler
Awards Exhibition.

Sculpture project with Hospital Arts.





Introduction

The purpose of this study is to investigate the effects of the proposed system on the performance of the system.

The system is designed to improve the performance of the system.

The system is designed to improve the performance of the system.

The system is designed to improve the performance of the system.

The system is designed to improve the performance of the system.

The system is designed to improve the performance of the system.

The system is designed to improve the performance of the system.

The system is designed to improve the performance of the system.

The system is designed to improve the performance of the system.

The system is designed to improve the performance of the system.

The system is designed to improve the performance of the system.

The system is designed to improve the performance of the system.

The system is designed to improve the performance of the system.

OCTOBER

Launch of Rehearsal of Memory in London.

C.A.P. Meetings, forward planning.

Arts exhibition visited by Under Secretary of State.

Pre Interviews for: Assistant to the Arts Co-ordinator.

M.R.H. Meeting re: Round Table Christmas float.

Paintings to Handicrafts for framing and mounting.

A.A.C. meeting, forward planning.

Sculpture workshops with Hospital Arts.

Tuesday Drama workshops with Chris Robinson.

Expressive Arts Monday evening workshops with Sue McHugh. Theme: Sanctuary.

Copies received of C.D. Rehearsal of Memory, for Participants in the project (to be presented at A.A.C. Christmas party
Publication: The Arts in Health Care

(Jessica Kingsley Publications) launched. This has contributions from Ashworth Arts Council.

Commissioned the Rosewood, which will be opened in spring 97 as Creative Therapies.

Gerald Beserakumo commenced sessional work with the Arts Co-ordinator, developing Black and Asian programmes.

Short listed post for: Assistant to Arts Co-ordinator.

Full report and evaluation completed and sent to Baring Foundation, from receipt of grant for Sculpture exhibition.

Commenced Ward based Womens projects on Acacias Beeches and Cedars.

Fund raising evening for Patients with Charity Arts Project incl: Video and Buffet.



London, England, 1980
The first meeting of the
Joint Research Council

London, England, 1980
The first meeting of the
Joint Research Council

London, England, 1980
The first meeting of the
Joint Research Council

London, England, 1980
The first meeting of the
Joint Research Council

London, England, 1980
The first meeting of the
Joint Research Council

London, England, 1980
The first meeting of the
Joint Research Council

London, England, 1980
The first meeting of the
Joint Research Council

October

London, England, 1980
The first meeting of the
Joint Research Council

London, England, 1980
The first meeting of the
Joint Research Council

London, England, 1980
The first meeting of the
Joint Research Council

London, England, 1980
The first meeting of the
Joint Research Council

London, England, 1980
The first meeting of the
Joint Research Council

London, England, 1980
The first meeting of the
Joint Research Council

London, England, 1980
The first meeting of the
Joint Research Council

London, England, 1980
The first meeting of the
Joint Research Council

London, England, 1980
The first meeting of the
Joint Research Council

London, England, 1980
The first meeting of the
Joint Research Council

NOVEMBER.

Weekly workshops on three womens wards = Acacias Beeches Cedars, included: encaustic Art, Mod Roc, Textiles and Das.

Monday mornings in the Exchange with Hospital Arts included Sculpture.

Monday afternoons in the Rosewood included interior re decoration with women.

Monday evenings in the Exchange included ~Sanctuary project~ with Sue McHugh.

Interviewed candidates for the new post of Assistant to the Arts Co-ordinator.

Tuesday afternoons Drama workshops in the Exchange with Chris Robinson.

Meeting with Clean Break theatre company, re a Womens residency in the Spring.

Preparations for Ashworth Arts Council meeting, minutes and Agendas.

Charity Arts Project: planning meeting for Christmas functions, and future events.

AAC AND CAP Received a High Commendation from Business in the Community award.

Commissioned the Rosewood centre, to be re opened as Creative Therapies. Inc: meeting with security, re locating furniture etc.

Identified women participants for the rosewood project.

Completed reports and finance update.

Attended meetings with Tate Gallery and Foundation for Creative Technology re: Womens multi media residency with Bobby Baker.

AAC MEETING:see minutes and outcomes.

Yorkshire Sculpture Park meeting re future collaborative work.

Attended Grand Charity dinner, on behalf of Charity Arts Project (C.A.P)

Preparations for C.A.P. Christmas party.



...the ...
...to be ...
...the ...

...the ...
...the ...

...the ...
...the ...

...the ...
...the ...
...the ...

...the ...
...the ...

...the ...
...the ...

...the ...
...the ...

...the ...
...the ...

...the ...
...the ...
...the ...

...the ...
...the ...
...the ...

...the ...
...the ...
...the ...

...the ...
...the ...
...the ...

...the ...
...the ...
...the ...

...the ...
...the ...
...the ...

...the ...
...the ...
...the ...

...the ...
...the ...
...the ...

...the ...
...the ...
...the ...

...the ...
...the ...
...the ...

DECEMBER

Sculpture projects Mondays with Hospital Arts.

Monday evenings Sanctuary projects with Sue McHugh.

Tuesdays drama with Chris Robinson.

Womens ward projects = Acacias Beeches and Cedars.

Commissioned Rosewood.

Xmas Arts party planning meeting.

Christmas Fair for East campus with C.A.P.

Staff development in Arts = meeting with Colin Vose.

Meeting with Colin Crigg Tate London, Adrian Plant Tate Liverpool and Colin Vose, re Staff development in the Arts.

Arts project in Rosewood for Women, commenced 11/12/96.

Town Hall planning meeting.

Arts Christmas party Monday evening 16th December open to all. Theme Star Trek.

C.A.P planning meetings.

Arranged for Christmas float to tour the Hospital, and participated/staffed with Alex Crowe.

Womens Christmas food platters x 3 wards 27th December.



Contents

Book Review: *Black Power* by
Robert Kennedy

Book Review: *Black Power* by
Robert Kennedy

Book Review: *Black Power* by
Robert Kennedy

Book Review: *Black Power* by
Robert Kennedy

Book Review: *Black Power* by
Robert Kennedy

Book Review: *Black Power* by
Robert Kennedy

Book Review: *Black Power* by
Robert Kennedy

Book Review: *Black Power* by
Robert Kennedy

Book Review: *Black Power* by
Robert Kennedy

Book Review: *Black Power* by
Robert Kennedy

Book Review: *Black Power* by
Robert Kennedy

Book Review: *Black Power* by
Robert Kennedy

Book Review: *Black Power* by
Robert Kennedy

Book Review: *Black Power* by
Robert Kennedy

January

Womens projects x three weekly =
Acacias Beeches Cedars.

Monday mornings = Sculpture group
with HOSPITAL ARTS.

Monday afternoons = Creative
therapy for Women.

Monday evenings = Sanctuary
project with Sue McHugh.

Tuesday afternoons = Drama series
with Chris Robinson.

TOWN HALL EXHIBITION (planning
meetings).

C.A.P. (meetings).

Summer Fete = (planning meetings)

Womens residency 'Escaping Food'
(forward planning)

Grant Applications = (A4E).

Module: Draft (Art in Forensic
Rehabilitation)

Planning meetings = (Institute of
Forensic Care)



January

January 1st - 1st day of the year

January 2nd - 2nd day of the year

January 3rd - 3rd day of the year

January 4th - 4th day of the year

January 5th - 5th day of the year

January 6th - 6th day of the year

January 7th - 7th day of the year

January 8th - 8th day of the year

January 9th - 9th day of the year

January 10th - 10th day of the year

January 11th - 11th day of the year

January 12th - 12th day of the year

January 13th - 13th day of the year

January 14th - 14th day of the year

January 15th - 15th day of the year

February 97.

Monday evenings workshops
Sanctuary.

Monday mornings sculpture with
Hospital Arts.

Monday Afternoons **Womens project.**

Wednesdays/Thursdays/Fridays Ward
based projects including: Mod
Roc/Encaustic Art/Textile
banners/**macro photography**/das tiles.

17th to 21st **Escaping food** a womens
project for inclusion in International
video Positive Festival.

Town Hall exhibition =planning
meetings.

Garden Fete planning meetings.

Charity Arts project meetings.

Work on Annual report.

Preparations for residency with **Clean
Break Theatre company.**

A.A.C meeting.

Meeting with Jenny Webb **Burnbake
Trust.**

Visit from Pauline Gladstone and Angus
McLewin **Clean Break.**

Preparations to rosewood for Opening
as **Creative Therapies** on 27th March.



GATEWAYS PROJECT

with **ANDREW SMALL**

The door, gateway and portal, have throughout history been used to symbolise the idea of 'Passing Through'. Probably the most evident use of this symbolism is in the name of the first month of the year, January, named after the God Janus, usually represented by two heads joined at the back, faces, facing away from each other, ie; one looking backwards, the other looking forwards.

The object of the exercise was to cast concrete slides, with protruding surface images, that when stacked in frames, compose a whole image or idea that will work in relation to the other doorways in the overall structure.

The protruding front side of the slides were created by part filling the frames with sand (2 inches thick) and pressing our chosen forms into the sand. The frames were then filled with concrete mix. The reverse side of the slides were worked directly into the concrete whilst it was still wet. Object, images and drawings were directly set into the slides. The result created stories that in some way represent statements of our lives, past, future, and environmental issues, in a three dimensional walk through the environment. Six participants produced **Gateways**.

This took place in R.T.S. Concrete department, with an artist in residence.

Each participant developed ideas which they wanted to portray, the process of resolving how this could be achieved with the given materials was an important part of the process.

Having a clear understanding of their work and content was crucial, as this would be sited in the grounds in the North of the Hospital, and be open to criticism and interest. The project is modular, which allows for additional work to be added. Identifying ownership of our space is important, in that we feel a sense of belonging, and familiarity.



Ruth Preece Arts Co-ordinator.

GATEWAYS PROJECT

THE GATEWAY

The Gateway is a project of the Gateway Foundation, a non-profit organization dedicated to the development of the Gateway region. The project is a multi-phase development that will create a new gateway to the region, providing a new way of life for the people of the region.

The project is a multi-phase development that will create a new gateway to the region, providing a new way of life for the people of the region. The project is a multi-phase development that will create a new gateway to the region, providing a new way of life for the people of the region.

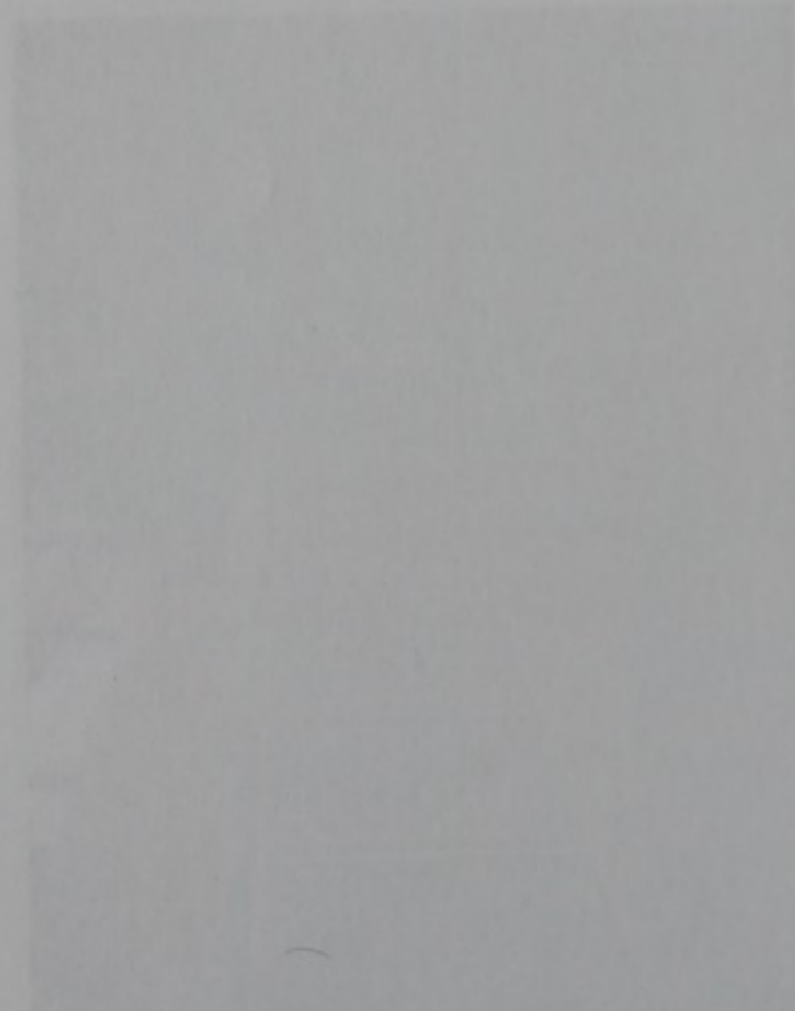
The project is a multi-phase development that will create a new gateway to the region, providing a new way of life for the people of the region. The project is a multi-phase development that will create a new gateway to the region, providing a new way of life for the people of the region.

The project is a multi-phase development that will create a new gateway to the region, providing a new way of life for the people of the region. The project is a multi-phase development that will create a new gateway to the region, providing a new way of life for the people of the region.

The project is a multi-phase development that will create a new gateway to the region, providing a new way of life for the people of the region. The project is a multi-phase development that will create a new gateway to the region, providing a new way of life for the people of the region.

The project is a multi-phase development that will create a new gateway to the region, providing a new way of life for the people of the region. The project is a multi-phase development that will create a new gateway to the region, providing a new way of life for the people of the region.

The project is a multi-phase development that will create a new gateway to the region, providing a new way of life for the people of the region. The project is a multi-phase development that will create a new gateway to the region, providing a new way of life for the people of the region.



The Rising of Aphrodite



In 1994 the Pottery Department was invited by the Hospital Arts to design a mural for the main entrance of the former Assembly Hall, now the Exchange, in conjunction with the Concrete Department and the collaboration of our Rehabilitation Service colleagues.

The mural was completed on the twenty eighth of June 1996 and has been incorporated into a seating area which is both highly ornamental and functional. This area represents the natural forces of nature, frozen in a moment of time, revealed through the impression of water, foam breaking against a building.

The title of the seat was suggested by a patient who was able to see a poetic connection within the work, he suggested "the rising of Aphrodite" based on one of the mythological stories of Aphrodite's birth.

Hesiod tells us a tale based on the supposed derivation of her name from "aphros" foam; by which she emerged fully grown from the sea at Paphos in Cyprus or on Cythera. For when Cronus had cut off the genitals of his father Uranus, he flung them into the sea; the foam gathered round them and they were transformed into a woman. When Aphrodite landed flowers grew in her path and she was attended by Eros (Cupid) and perhaps other divinities. She was known as Anadyomene ('she who emerges') and Cyprus, 'the Cyprian'.

"M. Grant & J. Hazel: who's who in classical mythology"

Jose A. Villarino
R.S. Department

20th Arts Crafts & Lit' exhibition

This year we received over 100 entries for the Annual Arts Crafts and literature exhibition.

The event has now reached it's 20th year, and over this period we have seen some dynamic, diverse and skilled entries.

This year we included categories in Sculpture and modelling, which has been most successful, receiving over 14 entries. Literature had a good following, with over 30 entries being submitted. Abstract, another new category received over 16 entries. Contributions to computer generated art, and still life maintained a high standard, but with fewer entries than previously.

The exhibition started in what was Park Lane Hospital, We only had two wards at the outset, but it was felt by the planners that the talent within the hospital should have a platform to exhibit their work. This facility also encouraged visitors affiliated to the Hospital to appreciate a more holistic view of life in the Hospital.

For our participants, having this platform to display their work to a wider community audience helped raise, self esteem, and provided a feeling of achievement.

Twenty years on we still have the same approach, inviting external artists to select and present awards. Bringing together a diverse range of visual skills, and giving participants ownership of their exhibition.

I would like to that our judges, who give their own time and energy each year, in what must be a difficult task, given the high standard of work produced.

Pat Morris and her family, have become firm friends of ours over the years. Her husband John, was a key player in the development of the arts in the hospital. Pat and her family have presented the **John Morris award for Artistic Interpretation** since 1986, and we thank and her family for sharing this event over the years, with us.



Ruth Preece Arts Co-ordinator.

The artist and the family have been the subjects of much of the work of the artist, and a large part of the development of the art in the twentieth century has been the result of the artist's interest in the family. The artist's interest in the family has been the result of the artist's interest in the family. The artist's interest in the family has been the result of the artist's interest in the family.

The artist's interest in the family has been the result of the artist's interest in the family. The artist's interest in the family has been the result of the artist's interest in the family.

The artist's interest in the family has been the result of the artist's interest in the family. The artist's interest in the family has been the result of the artist's interest in the family.

The artist's interest in the family has been the result of the artist's interest in the family. The artist's interest in the family has been the result of the artist's interest in the family.

The artist's interest in the family has been the result of the artist's interest in the family. The artist's interest in the family has been the result of the artist's interest in the family.

The artist's interest in the family has been the result of the artist's interest in the family. The artist's interest in the family has been the result of the artist's interest in the family.

The artist's interest in the family has been the result of the artist's interest in the family. The artist's interest in the family has been the result of the artist's interest in the family.

The artist's interest in the family has been the result of the artist's interest in the family. The artist's interest in the family has been the result of the artist's interest in the family.



Artists' Exhibition

Star Trek Christmas Arts Party

This year at the request of the Patients our party theme was science fiction, for which the work team of patients spent the two Mondays prior to the party making the various props for the party games, and designing and making the Space theme set and atmosphere in The Exchange Hall where the party was to take place. The props included:

two space shuttles - wheeled trolleys transformed by constructing a space shuttle shape with cardboard which was then painted

Meteorites - sponges painted silver

Planet Set - fabric draped over scrunched up cardboard to give the effect of a rocky surface, painted planet and galaxy sky backdrop, alien figure standing on planet.

As people arrived for the party they were greeted by music which had a space theme and the planet set and backdrop all light up by the atmospheric lighting. The Rehearsal of Memory C D rom was set up for people to view in the foyer throughout the evening. When everyone had arrived, 28 patients and three visitors, the games started with Build the Alien. Grouping into two teams, each team racing to build an alien from materials provided. The winning team for the best alien received Mars bars and the losers received Milky Way bars.

The next game was a race between two teams who had to cross the "planets surface", (the route mapped out on the hall floor) in space shuttles to reach their alien and return to home base without being hit by meteorites, with prizes of more Mars bars and Milky Ways for the winning team.

After all the racing around everyone was ready for the excellent buffet put on by Catering Skills, and to relax and chat in the spacey atmosphere.

When the party ended everyone said they had enjoyed the evening and appreciated the efforts which had been put into setting up the party.

8ft cardboard space alien.



Heather Alderson, Assistant to Arts Co-ordinator

Star Trek Christmas Air Party

The party was held at the... and... for...
...the... and...
...the... and...
...the... and...

The... which...
...the... and...
...the... and...
...the... and...

The... which...
...the... and...
...the... and...
...the... and...
...the... and...

The... which...
...the... and...
...the... and...
...the... and...

The... which...
...the... and...
...the... and...
...the... and...



Star Trek Christmas Air Party

Christmas Arts Seafood Platters.

Friday 27th December, Ward based projects for Women including Acacias Beeches and Cedars.

The projects included marbling boiled eggs, and preparing mixed seafoods on a salad bed platter.

The eggs and salad had been purchase and prepared prior to the project.

All participants helped to arrange the salad and seafoods (wearing disposable gloves), Next we made small cracks on the boiled eggs, then we used food colouring to soak into the cracks.

Once the eggs had dried, we peeled off the shell to reveal brightly coloured marble effects on the eggs, these were then arranged on the platters to give a colourful decorative effect.

Our first ward was Beeches (10.am.) we had a poor response here, but Heather (assistant to arts co-ordinator) and myself completed the project with some spectators. Both Acacias and Cedars had good response and participation from Patients and Staff. The platters were fridged on their respective wards for enjoyment later.

Several of the Staff and Patients thanked us for attending their wards and providing the project.



Ruth Preece Arts Co-ordinator.

Christmas Arts & Crafts Projects

Friday 27th December, Ward based projects for Women including Access Games and Crafts

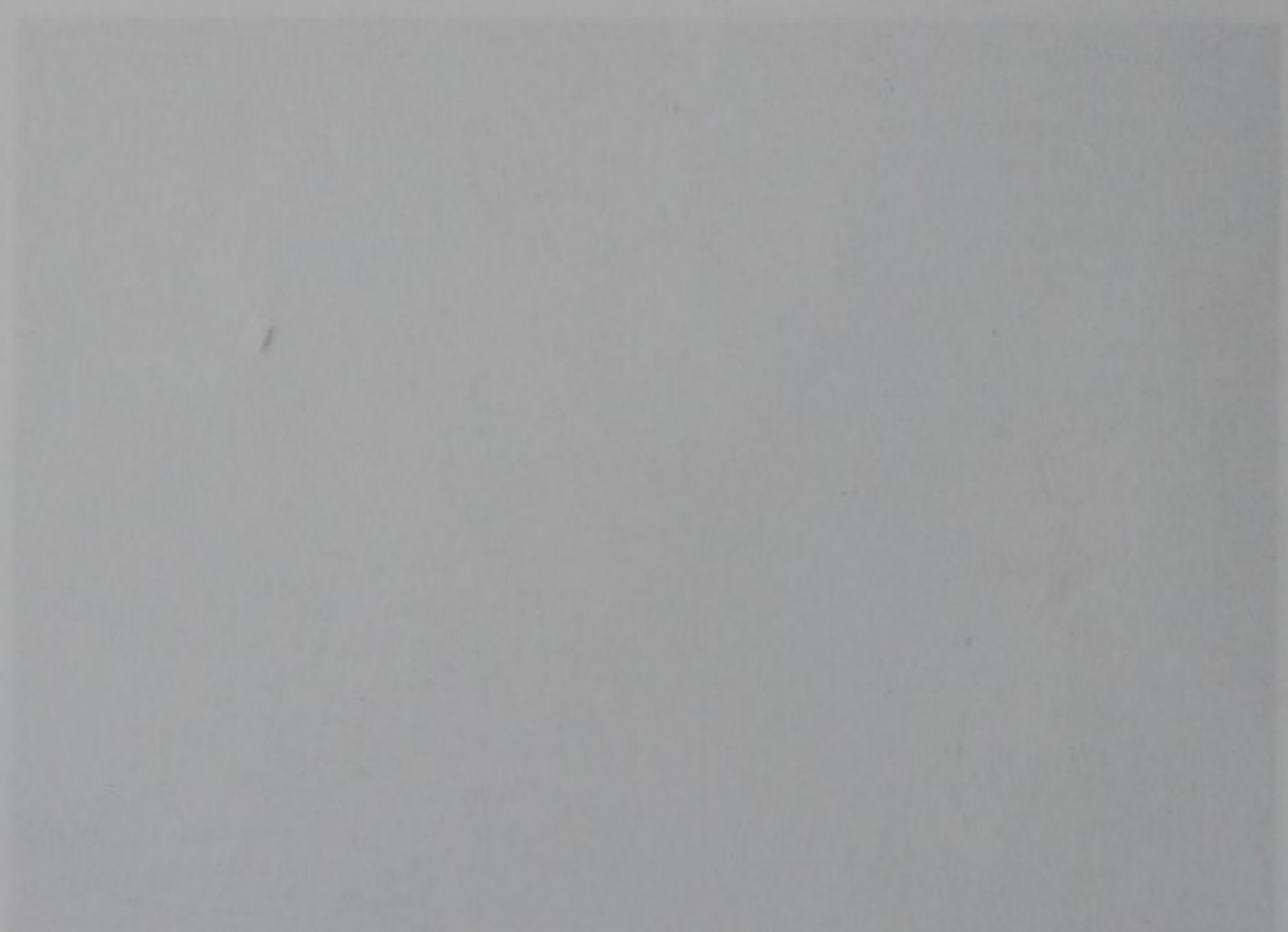
The projects were very enjoyable and a great way of spending time with friends and family.

The day was filled with fun and games and projects that were easy to do. All projects were based on the theme of Christmas and were suitable for all ages. There was also a quiz and a raffle.

Once the projects were done, we had a quiz and a raffle. The quiz was very easy and the raffle was very good.

Our day was very successful and we had a great time. All projects were very easy to do and the quiz was very easy.

The projects were very enjoyable and a great way of spending time with friends and family.



WOMENS MULTI MEDIA RESIDENCY



This residency had been developed between Ashworth Hospital and Foundation and Creative Technology. Prior to commencing the project, two meetings had been arranged to discuss the residency content, with Special Needs Clinical Team, and to meet the artist Bobby Baker.

On advice from the Clinical Team seven Women were selected to take part in the project.

The project included working with food, and multi media equipment. The remit was to make figurative portraits using food, this would be video'd (excluding any shots of participants and their features).

Participants included: Julie B-Tracey N-Ruppela Q- Anwen L- Tania M- Tina J- Fiona C-.

An equal mix of staff disciplines participating included: Tracey Linton- Tracey Sefton- Kerry Morris- Patricia Green- Brenda Jones, plus Ruth Preece and Heather Alderson.

External visitors included Bobby Baker Performance Artist- Jo Evans Assistant to

B Baker- Diane Clarke Video/ Multi media co-ordinator.

Each session commenced with warm up and trust games ie:

Pass a clap, Name games, pass the orange, physical sculpture etc, these were designed to be fun and help everyone to relax, and feel safe within the group.

These would then be followed by making art with food, figurative, self portraits and full bodies.

The first day started with pairs making portraits of themselves and each other, using dried foods and sweets.

This was followed by the same pairs making a full body using paper and the dried foods. The group all entered into this with openness and creativity. The atmosphere was good and some diverse and interesting pictures emerged.

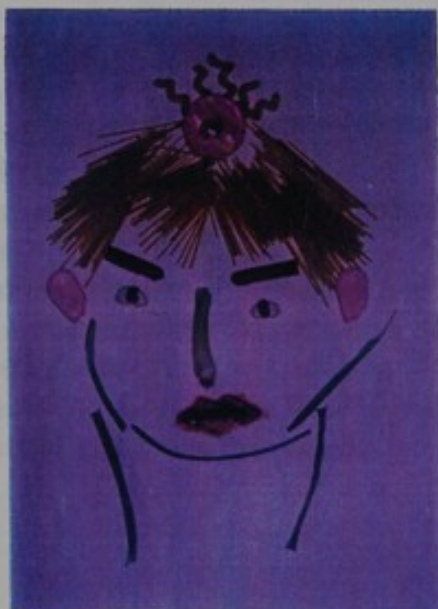
On the second day we extended the format to include cooked foods, such as spaghetti and porridge. At this stage we were still working on large pieces of paper.



The participants all took part in the process and it was good to hear laughter amongst them, as ideas took shape with the food available.

Day three was meant to be filming our food figures, but for some reason 14 Women were brought from the wards, this made it very difficult with continuity, and seemed to unsettle one of our original participants. However we did manage to provide lot's of activities with the food.

This included portraits in marzipan and cake decorating. Decorating a Woman Sculpted out of cake and butter icing (which Bobby had prepared) this was given a personality by decorating with lot's of cake decorating materials, biscuits and sweets.



A life size Woman was made on sheets, this was produced by drawing round one of the participants (Julie B volunteered for this role) next in groups of three we had to decorate her with food, this being the part which was being filmed for the exhibition. Background noise made it hard to produce audio from the participants working on our Woman, but we did manage to complete her during this session.

Day four we contacted the wards to ensure that the named participants only came. Unfortunately Julie could not attend, she had to attend court- I was very impressed with her attendance up to this day, as staff had explained that she was quite worried and low in her self, due to this appearance in court. I hope that this residency had given her something positive to focus on whilst awaiting the appointment. We commenced the last day with more games and exercises, this seems to have been a very successful part of the

residency, judging by the laughter and banter taking place.

We then went to our food woman, and all had to think of a name for her, Anwen chose Cariad which was the most popular, Anwen then explained that it meant Love. Having given our food woman a name and identity, we then proceeded to complete the process with our cake woman. Finally we had to identify a space where she may live, this would be shown using a sheet and the remaining food materials. I was amazed at the free way the participants took the food and let it explode onto the cloth in an unrestrained and exciting way, I have captured the photo, I wish I could have captured the atmosphere!

After this we had a party, eating the cake and drinking pop.

Jo taught us some Irish folk steps, and this rounded off a most enjoyable week.

In conclusion, this worked because we had a most committed group of staff, patients and artists, supporting and encouraging each other.



The work will be included in this years **International Video Positive exhibition.** Hopefully projects like this will help in future bids for funding project work.
Ruth Preece Arts Co-ordinator.

recovery, judging by the laughter and
 better feeling place.
 We then went to our food women, and all
 had to think of a name for her. Anne
 chose Anne which was the most popular.
 Anne then explained that it meant I love
 having given our food women a name and
 identity, we then proceeded to complete
 the process with our own women finally
 we had to identify a space where she may
 live, this would be shown using a sheet
 and the remaining food materials I was
 charged at the time with the participants
 took the food and for a minute into the
 chair in an unstructured and random way.
 I then opened the photo I was I could
 have created the arrangement.
 After this we had a party, eating the cake
 and drinking tea.
 In order to make both folk agree, and this
 needed all a great enjoyable work.
 In conclusion, the women I found we had
 a new emotional group of staff, patients
 and staff, enjoying and enjoying
 each other.



The woman who is featured in the photo
 is Anne, who is the woman who is featured
 in the photo. She is the woman who is
 featured in the photo. She is the woman
 who is featured in the photo. She is the
 woman who is featured in the photo.

This included patients in hospital and
 some of the staff. The woman who is
 featured in the photo is the woman who
 is featured in the photo. She is the woman
 who is featured in the photo. She is the
 woman who is featured in the photo.



A woman who is featured in the photo
 is the woman who is featured in the photo.
 She is the woman who is featured in the
 photo. She is the woman who is featured
 in the photo. She is the woman who is
 featured in the photo. She is the woman
 who is featured in the photo. She is the
 woman who is featured in the photo.
 She is the woman who is featured in the
 photo. She is the woman who is featured
 in the photo. She is the woman who is
 featured in the photo. She is the woman
 who is featured in the photo. She is the
 woman who is featured in the photo.

Womens Xmas Banners

The Xmas Banner Project was started after a request from one of the womens wards for a Christmas Banner during the Autumn Banner Project, with artist Sue McHugh. The material for three banners were prepared with a plain green cut out shape of a Christmas tree on each. These were then taken to Acacias, Beeches and Cedars and women from the wards joined in with the making of the various images, using stencilling and collage techniques to fill the banners with images associated with Christmas.

Three days were spent on the banners over a period of three weeks. Due to problems caused by fog other staff helped with work on the banners to complete them for Christmas. Ruth and myself spent a morning machine stitching and finishing of the banners in The Exchange. The banners were hung in front of the windows at the suggestion of one of the women, the extra light adding to the overall effect of the banners. Velcro tape sewn on to the back of the banners was used to hang them. The hung banners gave a festive feel to the day area and dining room on the wards.



Heather Alderson Assistant to the Arts Co-ordinator
18/12/96.

Finance `96/`97 Hospital Account.

<u>February `96</u>	44.52.
<u>March `96</u>	45.00.
<u>April `96</u>	
<u>May `96</u>	377.00.
<u>June `96</u>	423.25.
<u>July `96</u>	91.79.
<u>August `96</u>	175.10.
<u>September `96</u>	232.60.
<u>October `96</u>	364.43.
<u>November `96</u>	491.28.
<u>December `96</u>	120.85.
<u>January `96</u>	224.96.
<u>February `96</u>	225.00.

Total at end of February

2.863.21.

These figure include : Equipment and Materials, Travel, and Office.

Table 1. Monthly and Annual Average

January	44.5
February	45.0
March	47.0
April	48.5
May	50.0
June	51.5
July	53.0
August	54.5
September	56.0
October	57.5
November	59.0
December	60.5
Annual	55.0

Source: [illegible]

Notes: [illegible]

These figures are based on the data for the period 1961-1970.

Finance report:
Ashworth Arts Council Account.

OUTGOING:

<u>February `96</u>	180.00
<u>March `96</u>	280.00
<u>April `96</u>	1,104.50
<u>July `96</u>	250.00.
<u>August `96</u>	500.00.
<u>September `96</u>	30.
<u>October `96</u>	250.00
<u>November `96</u>	100 00.
<u>December `96</u>	168.95
<u>January `96</u>	18.95.
<u>February `96</u>	2,288.19.
(Nil = May/June)	
TOTAL: <u>5,080.89.</u>	

These figure include : Artists fees and additional equipment.

Incoming:

<u>Lecture fees</u>	150.00
<u>deposit from savings account</u>	2.000
<u>M.R.H commercial finance</u>	250
<u>deposit from savings account</u>	3.500
<u>North West Arts Board</u>	1.500
<u>Interest</u>	605.58

Total: 8.005.58

at end March current = 1.562.28. Savings = 3.195.57

160

Annual Report

140

120

100

80

60

40

20

0

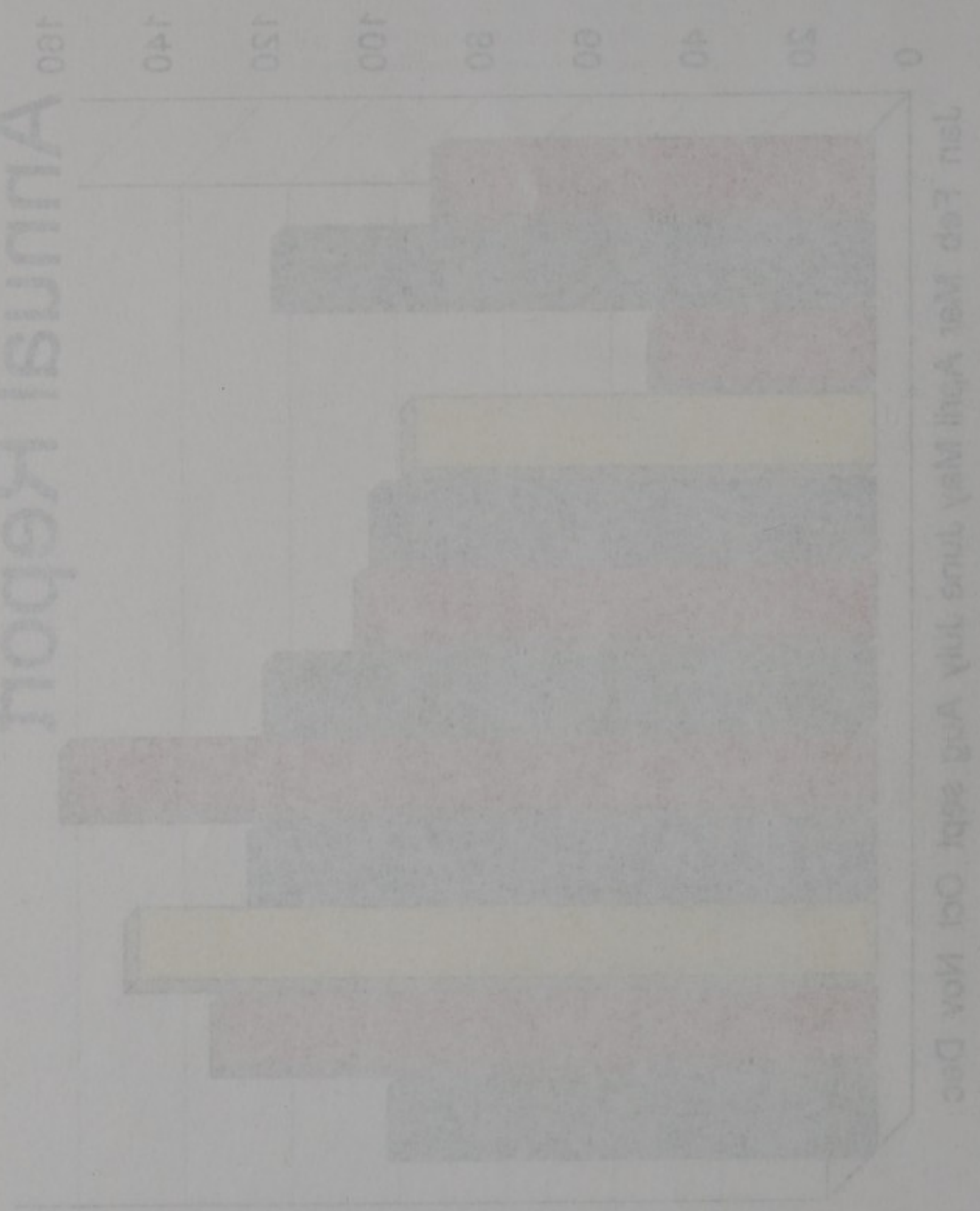
Jan Feb Mar April May June July Aug sept Oct Nov Dec

project/attendance

■ Series 1



Annual Report



Quarter 1



