

Quarterly report of the Mysore Department of Health.

Contributors

Mysore (India : State). Department of Health.

Publication/Creation

Bangalore : printed at the Mysore Government Press, [1938]

Persistent URL

<https://wellcomecollection.org/works/vnck4hyh>

License and attribution

This work has been identified as being free of known restrictions under copyright law, including all related and neighbouring rights and is being made available under the Creative Commons, Public Domain Mark.

You can copy, modify, distribute and perform the work, even for commercial purposes, without asking permission.



Wellcome Collection
183 Euston Road
London NW1 2BE UK
T +44 (0)20 7611 8722
E library@wellcomecollection.org
<https://wellcomecollection.org>

NOT TO BE TAKEN AWAY.

Public Health is Purchasable. Within Natural Limitations any Community
can Determine Its own Death-rate.

Vol. X]

[No. 4

QUARTERLY REPORT

OF THE MYSORE STATE

DEPARTMENT OF PUBLIC HEALTH

OCTOBER—DECEMBER, 1938

P. PARTHASARATHY, L.M.S., B.S.Sc., L.R.C.P.,
L.R.C.S., D.T.M., D.P.H.,
Director of Public Health

and

Registrar-General of Births, Deaths and Marriages.



BANGALORE :

PRINTED BY THE SUPERINTENDENT AT THE GOVT. PRESS

1939

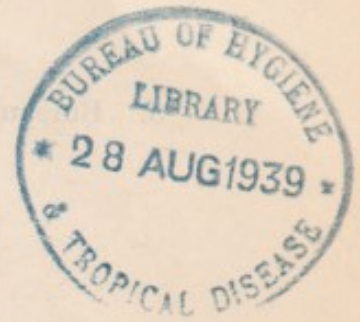


**“Search for the Truth is the noblest occupation
of Mankind, its publication a Duty.”**



22501292062

CONTENTS.



PART I.

1. General
2. Bureau of Administration
 - (a) City Health Organisations—
 - (i) Bangalore City
 - (ii) Mysore City
 - (iii) Kolar Gold Field
 - (b) District Health Organisations—
 - (i) Mysore District
 - (ii) Shimoga District
 - (c) Voluntary Organisations—
 - (i) Red Cross Society
 - (ii) Other Centres
3. Bureau of Epidemiology—
 - (i) Central Laboratory
 - (ii) Malaria Stations
 - (iii) Malaria Control Unit, Mandya
 - (iv) Malaria Survey of Sivasamudram and Shimshapur
 - (v) Malaria Control in Cities and other places
 - (vi) Hookworm Campaign
 - (vii) Guineaworm Unit
 - (viii) Tuberculosis
 - (ix) Control of Epidemic Diseases
4. Bureau of Laboratories—
 - (a) Public Health Institute—
 - (i) Bacteriological Section
 - (ii) Chemical Section
 - (iii) Medico-legal Section
 - (iv) Vaccines Issued
 - (v) Fees
 - (vi) Nutrition Experiments

(b) Vaccine Institute—

- (i) Summary of work done
- (ii) Results of Vaccination

5. Bureau of Health Education—

- (i) Cinema Publicity
- (ii) Health Lectures
- (iii) Health Exhibition
- (iv) Newspaper Publicity
- (v) Distribution of Health Literature
- (vi) Health Education in Jatras and Fairs
- (vii) Vaccination Drive

6. Bureau of Rural Health—

(a) Health Training Centre, Closepet

- (i) Infectious Diseases
- (ii) Vital Statistics
- (iii) Vaccination
- (iv) Maternity and Childwelfare
- (v) Midwives
- (vi) School Medical Inspection
- (vii) Laboratory Examinations

(b) Rural Health Unit, Mandya—

- (i) Infectious Diseases
- (ii) Vaccination
- (iii) Midwives
- (iv) Chlorination
- (v) Stray Dogs
- (vi) New Buildings
- (vii) Drainage
- (viii) Soak-pits
- (ix) General Sanitation
- (x) Spleen Survey
- (xi) Malaria
- (xii) Quinine Distribution
- (xiii) Health Education
- (xiv) Vital Statistics
- (xv) Laboratory
- (xvi) Consultation
- (xvii) Disposal of Health Papers
- (xviii) Conference

WELLCOME INSTITUTE LIBRARY	
Coll.	welMomec
Call	Ann. Rep
No.	WA 28
	.J14
	M99
	1938

7. Bureau of Sanitary Engineering—

- (i) Water Supply
- (ii) Drainage and Town Planning
- (iii) Sanitary Fittings and Installations
- (iv) Borewells
- (v) Boreholes

PART II.

Bureau of Vital Statistics.*

(CENTRAL STATISTICAL OFFICE.)

(a) General

(b) Registration Area—

- (i) Births, Still-births and Infant Mortality
- (ii) Deaths
- (iii) Marriages

(c) Non-registration Area


- (i) Births, Still-births, Infant Mortality
- (ii) Deaths

(d) Epidemic Diseases

(e) Parturition Cases



*Office of the Registrar-General of Births, Deaths and Marriages in Mysore, Bangalore.



Digitized by the Internet Archive
in 2019 with funding from
Wellcome Library

<https://archive.org/details/b31833731>

QUARTERLY REPORT

OF THE MYSORE STATE

DEPARTMENT OF PUBLIC HEALTH.

PART I.

GENERAL.

During the quarter the state of public health was satisfactory, and the State was entirely free from cholera, the incidence of plague and smallpox being very low.

In connection with the working of the new system of registration and compilation of vital statistics in the rural areas of Bangalore and Shimoga districts, Government, in their Notification No. G. 5400—P. H. 73-37-7, dated December 1, 1938, were pleased to issue revised rules under the Mysore Births and Deaths Registration Act III of 1918. Under Section 20 of this Act the following amendments to the rules were issued by Government in Notification No. G. 8,572—P. H. 28-38-6, dated March 4, 1939.

Rule 1. Add at the end of the existing note “and the Assistant Registrar-General means the Superintendent of the Bureau of Vital Statistics for the time being.”

Rule 22. Between the words “over his signature” and “and sent to the Amildar” add “or that of the Assistant Registrar-General.”

As per Government Order No. G. 5663-5—P. H. 72-37-4, dated December 9-12, 1938, arrangements are being made for the entertainment of four Public Health Probationers on a pay of Rs. 100 during the first year and Rs. 150 thereafter till they are absorbed in the grade of Health Officers.

As per Government Notification No. G. 5475—P. H. 38-38-7, dated December 3, 1938, Mr. J. A. Iswaramurthy, Superintendent, Vaccine Institute, has been granted furlough on average salary for six months from November 9, 1938, preparatory to retirement.

The Director of Public Health was on tour for 36 days in the quarter under report. He visited 17 towns and 15 villages inspecting vaccination, water supply, malaria control work, etc. He attended the meetings of the Trust Board and the Representative Assembly at Mysore. Special visits were paid to Hiriyur in connection with the control of malaria by sanitary engineering methods, to Talkad to see the special sanitary arrangements made and to Karapur in connection with the sanitary arrangements and water supply to the Viceregal camp.

In connection with the control of plague the method of cyanogasing was recommended for adoption in the municipalities of Bangalore, Mysore and Kolar Gold Field. It is gratifying to note that the K. G. F. Sanitary Board have sanctioned the necessary staff and equipment for this work. The Sanitary Inspector in charge of this work received training in the Health Training Centre, Closepet, and by the end of the quarter 2,874 houses were cyanogased in 21 villages, 2 towns and 11 blocks. In Bangalore City the Sanitary Inspectors have been trained and the necessary equipment has been purchased and during the quarter 100 houses were cyanogased.

BUREAU OF ADMINISTRATION.

(a) CITY HEALTH ORGANISATIONS.

(1) Bangalore City.

M. G. SRINIVASA PEIDPET, L.M.S., B.S.SC.,

Health Officer.

During the quarter 1,968 live births were registered, giving a birth-rate of 37.1 per mille of population as compared with 35.9 in the previous quarter. Exclusive of still-births 1,475 deaths were reported with a death-rate of 27.8 per 1,000 of population. The infant mortality rate was 182.9 as against 231.1 in the preceding quarter.

Under plague seven attacks with six deaths were reported and 1,021 anti-plague inoculations were done and 302 houses were disinfected.

There was no case of smallpox in the entire quarter. As a routine measure 2,710 vaccinations were performed of which 1,310 were primary and 1,400 re-vaccinations.

The estimated number of unprotected children is about 1,320.

Enteric fever accounted for 44 deaths in the quarter under report. As many as 24,101 anti-typhoid inoculations were done and 47 houses were disinfected. A special investigation into the incidence of typhoid in the city is being completed.

During the quarter 727 stray dogs were destroyed.

The action taken in respect of sanitary defects are noted below:—

No. of eating houses inspected	...	35
„ aerated water factories visited	...	13
„ coffee clubs and sweetmeat shops inspected	...	199
„ bakeries visited	...	25

Of 126 notices issued, 15 were complied with and 30 were pending disposal.

Sanitary improvements effected during the quarter were:—

1. New type of stands with platforms were constructed to three public fountains.
2. “V” shaped and silt pattern drains were constructed in Mavalli area and some old drains were set right.
3. The ditch in dumping ground by the side of main drain is being filled up.
4. Rank vegetation in New Mission Road and green fences to an approximate length of about five furlongs were removed.
5. Twenty windows were recommended for different houses on account of ill-ventilation in VII and VIII Divisions.
6. Four pits were got filled up by means of rubbish and earth in VII Division.

The following is a statement showing the samples of food-stuffs analysed during the quarter.

Nature of samples	Number of samples	Number found genuine	Number found adulterated
1. Ghee	51	14	37
2. Butter	10	10	...
3. Cow's milk	4	4	...
4. Buffalo's milk	17	13	4
5. Mixed milk	8	5	3
6. Unspecified milk	12	8	4
7. Coffee powder	10	8	2
Total	112	62	50

(2) Mysore City.

S. SESHAGIRI RAO, B.SC., M.B.B.S., D.P.H.,

Health Officer.

During the quarter 1,461 live births, exclusive of 51 still-births, were reported giving a birth-rate of 47·0 per 1,000 of population. The total number of deaths reported was 880, with a death-rate of 28·3 per mille of population. Of these deaths 181 were of infants under one year of age, the infant mortality rate being 123·9 per 1,000 live births. In the quarter under report 15 maternal deaths were reported giving a maternal mortality of 9·9 per 1,000 births.

Plague accounted for 33 attacks and 29 deaths during the quarter. Of these three attacks with three deaths were non-indigenous cases. A total of 2,947 anti-plague inoculations were done. As an anti-rat measure, rat-traps were distributed to 3,395 houses and 3,134 rats were destroyed.

The city was free from small-pox and cholera. A total of 1,947 vaccinations and nine anti-cholera inoculations were performed.

Five cases of influenza were reported during the quarter.

Under typhoid 23 fatal cases were reported and 108 anti-typhoid inoculations were done.

Stray dogs destroyed during the quarter numbered 554.

During the quarter 158 houses were disinfected and 125 wells were chlorinated.

During the quarter 58 visits were paid to hotels, 166 to coffee clubs, 38 to aerated water factories, 39 to bakeries and 130 to mutton stalls. Decomposed fruits and vegetables of about 29 basketsful were destroyed in different parts of the city, with a view to improve their condition in conformity with the Municipal Act. One thousand four hundred and forty-eight notices were issued under sections of the Municipal Act, of which 905 were complied with the terms of notices.

At the office laboratory the following samples were examined :—

Samples		Number
1. Samples of water for bacteriological examination.	Tap ... 180 Well ... 35	} ... 215
2. Samples of water for chemical examination	..	42
3. Water for free chlorine test	..	139
4. Milk for bacteriological test	..	4
5. Sewage and Sewage effluents	..	12
6. Sample of Sweet	..	1
7. Rodents examined for Plague (Rodents found positive to Plague = 1)	..	38
8. Other samples examined	..	1

It is significant to note that Prince Jayachamarajendra Wadeyar Bahadur was pleased to visit the laboratory section on November 17, 1938.

The following is a statement showing particulars of samples of food-stuffs analysed at the office laboratory :—

Sample	Number of samples examined	Number found genuine	Number found adulterated	Number of cases prosecuted	Number of cases convicted
1. Cow's milk ...	23	14	9	11	6
2. Buffalo's milk ...	30	14	16	12	4
3. Mixed milk (cow's and buffalo's.)	6	5	1	3	2
4. Skimmed Milk ...	2	1	1
5. Pasteurised Milk.	1	1
6. Ghee ...	4	3	1	1	...
7. Butter ...	8	6	2
8. Coffee powder ...	2	2
Total ...	76	46	30	27	12

As usual, gambusia fish was distributed to the wells and ponds. Paris-green was sprayed every week in all the breeding places, malariol being used for preventing the breeding of cluex mosquitoes.

Sixty-one flush latrines were constructed during the quarter. Of these 56 were D. C. latrines converted into

flush, whilst in the case of remaining 5 the pit latrines were converted into flush latrines.

(3) Kolar Gold Field.

M. RAMACHANDRA RAO, B.A., M.B.B.S., C.P.H.,

Health Officer.

During the quarter 983 live births and 42 still-births were reported with a birth-rate of 47·3 per mille of population. Of 546 deaths reported, giving a death-rate of 26·2 per 1000 of population, 158 were deaths of infants under one year of age. The computed infant mortality rate was 160·7 as against 166·2 in the previous quarter. The maternal mortality reported was 2·9 per 1000 births including still-births.

In the quarter under report one fatal case of plague was reported and 294 anti-plague inoculations were done.

Smallpox accounted for 2 attacks and 1 death. As a preventive measure 1,677 primary and 731 re-vaccinations were done. The area was free from cholera in the period under review.

Under influenza 28 fatal cases were registered.

Typhoid accounted for 6 attacks with 6 deaths.

The number of houses disinfected was 125.

Stray dogs destroyed during the quarter numbered 328 and the number of rats destroyed was 18,250.

At the office laboratory the following examinations were made:

<i>Samples.</i>	<i>Number.</i>
1. Liver and spleen for anthrax ...	16
2. Smear for G. C. ...	14
3. Nasal smear for leprosy ...	2
4. Blood smear for M. P. ...	11
5. Dead rat for plague ...	9
6. Urine for A. S. ...	10
7. Sputum for T. B. ...	3
8. Blood for R. B. C. Count ...	1
9. Motion for hookworm ...	7
10. Dogs' brain sent to Coonoor ...	6
11. Dogs kept under observation ...	50
12. Water analysis done ...	6
13. Free chlorine test done ...	6
14. Advised for A. R. T. ...	27
15. Dog-bite cases ...	78

The following sanitary improvements were effected including water supply, drainage, opening out lanes, etc.

<i>Estimates sanctioned.</i>	<i>Rupees.</i>
1. Purchase of glass almirah for the use of drawing branch	45
2. Cost of whitewashing parapets of tunnels and painting mile-stone	15
3. Purchase of tools for the use of gang work	29
4. Improving the 2 wings of K. G. H. Building	1,800
5. Constructing a platform for keeping incinerator inside Robertsonpet Market	19
6. Cost of engraving the tablet stone for the Sanitary Board High School	30
7. Purchase of flower pots for the use of K. G. H. Park	50
8. Purchase of red earth sand for the use of paths.	30
9. Repairs to Sanitary Board Office in Champion Reefs	110
10. Improving the main entrance of Robertsonpet Market	390

<i>Estimates sanctioned and Work done.</i>	<i>Rupees.</i>
1. Constructing evening bazaar stall inside Robertsonpet Market	720
2. Putting up a cement concrete compound wall to Child Welfare Centre	197
3. Fixing old stone posts behind Musafirkhana in Robertsonpet	34
4. Constructing a slabbed drain to lead off the sewage behind Musafirkhana	176
5. Repairs to the office of the Market Sergeant in Andersonpet	42
6. Repairs to sheep slaughterhouses in Andersonpet	166
7. Repairs to beef stall in Andersonpet	173
8. Repairs to sheep airing room in Andersonpet	99
9. Repairs to beef airing room in Andersonpet	128
10. Re-forming Minni Ibrahim Road	300
11. Re-forming B. M. Road	293
12. Forming Mission Road	216
13. Raising the Road by the side of new stall in Robertsonpet Market	214
14. Forming the new road behind Musafirkhana in Robertsonpet	124
15. Construction of drain and 3 culverts in front of Jubilee sites at Andersonpet	1,004
16. Construction of drains along V Cross Road	701

Action taken against Sanitary Defects.—The hotels, bakeries, etc., were inspected as per details shown below:—

<i>Hotels, etc.</i>		<i>No. of visits paid.</i>
1. Hotels	...	383
2. Mutton and fish stalls	...	367
3. Chakna stalls	...	322
4. Coffee clubs	...	353
5. A. W. factories	...	304
6. Bakeries	...	280
7. Markets	...	36
8. Slaughterhouses	...	36

Cyanogas.—A special gang was appointed from November 4, 1938, with one maistry on Rs. 15 per mensem, and 6 gangmen on Rs. 10 each per mensem. A total of 21 villages, 11 blocks and 2 towns were tried with cyanogas, and 2,874 houses were cyanogased and 801 rats were destroyed excluding those that died in the rat holes. Two houses at Robertsonpet wherein rat-falls occurred were thoroughly disinfected with cyanogas.

(b) DISTRICT HEALTH ORGANISATIONS.

(1) Mysore District.

G. N. SESHADRI, L.M.S., D.P.H.,

Health Officer-in-charge.

As the new system of registration and compilation of vital statistics is working only in Shimoga and Bangalore districts, it is not possible to present here the current statistics of births, deaths and marriages.

During the quarter 131 attacks and 83 deaths from plague were reported in 28 places as against 138 attacks and 95 deaths in the previous quarter. As a preventive measure 24,649 anti-plague inoculations were done. A special duty Sub-Assistant Surgeon was appointed to assist the District Health Officer in inoculation work and he did 4,758 inoculations. The District Health Officer did 178 inoculations.

The district was free from smallpox and cholera in the quarter under report. As a routine measure 10,388 vaccinations were done. A total of 396 anti-cholera inoculations were also performed. These vaccinations

include those done at Karapur, in Municipalities and in the Rural Health Unit, Mandya. In connection with the Viceregal visit to Karapur a vaccination drive was conducted by eleven District Board Vaccinators with full equipment. These vaccinators visited 42 villages and conducted 4,025 vaccinations, including 830 done by the District Health Officer.

Free distribution of quinine was made in malaria infected localities. Of 7,100 pills distributed about 1,000 were distributed by the District Health Officer during his itinerary.

The District Health Officer visited 22 villages and 4 towns in connection with plague and 15 villages in connection with shifting of villages, 2 towns in connection with jstras, 6 villages and 2 towns in connection with smallpox duty and 2 villages in connection with sanitary arrangements.

One big jatra, *viz.*, Panchalinga Darsana at Talkad, was held in the last week of November, where sanitary arrangements were made. Daily removal of rubbish, temporary bore-hole latrines, and safe drinking water supply were provided. Five special duty Sub-Assistant Surgeons were detailed for duty in five routes where the pilgrims were expected to pass through for doing anti-cholera inoculations. The Sub-Assistant Surgeon, Sargoor, also did 24 inoculations in the dispensary among people proceeding to the said jatra.

(2) Shimoga District.

E. ANANTHA RAO, B.Sc., M.B.B.S., D.P.H.,

Health Officer.

During the quarter 3,240 live births were registered giving a birth-rate of 24.0 per mille of population. The number of still-births reported was 136. In the quarter under report 463 infants under one year of age died giving an infant mortality of 142.7 per 1000 live births. The maternal mortality computed from the registered figures was 33.2 per 1000 births. A total of 2,861 deaths occurred during the quarter and the death-rate was 21.2 per 1000 population.

Plague.—Plague infection broke out in two villages, *viz.*, Thumbinakatte and Suragehalli in Shikarpur Taluk.

At Thumbinakatte there was one death. The village was completely evacuated and the whole village was protected with anti-plague inoculation. At Suragehalli there occurred 31 attacks with 15 deaths. The people refused inoculations. They evacuated the village only partially after some deaths had taken place. Arrangements had to be made for compelling people to evacuate the infected houses. The Sub-Assistant Surgeon, Shikarपुर, visited the village four times and the District Health Officer twice. Out of a total population of 500 persons, 450 were protected against plague.

In other places 730 anti-plague inoculations were done, as detailed below :—

Bhadravathi Old Town	530
Shimoga Town	49
Santhekadur	34
Thumbinakatte	102
Hodigere	15

Smallpox.—Five attacks and one death from smallpox were reported from Kanchiganahal, a village in Chennagiri taluk. On investigation the infection was traced to Kalkere, a village in Holalkere taluk. The infection was among cobblers, belonging to Adikarnataka community, who had contact with the cobblers at Kalkere. The spread of infection was arrested by an intensive vaccination campaign in Kanchiganahal and all the villages within a distance of 5 miles from it. Three vaccinators were detailed for the work and 1,807 vaccinations were done in 10 days.

Vaccination.—Out of a total of 7,444 vaccinations done 6,039 were primary and 1,405 revaccinations.

The vaccinators' work was inspected by the District Health Officer and the Sanitary Inspectors during their itinerary. As per instructions of the Director of Public Health, the Sanitary Inspectors are checking 50% of the vaccinations done by the vaccinators.

The vaccinators are now required to submit (1) advance tour programmes, (2) pay roll information and (3) monthly returns.

Checking of Vital Statistics.—Check registers maintained in the Taluk Offices for posting returns of births, deaths and marriages were checked in the following places :—

- | | | |
|--------------|--|--------------|
| 1. Hosanagar | | 4. Shikarपुर |
| 2. Sagar | | 5. Honnali. |
| 3. Sorab | | |

The Amildars were requested to see that the Patels send the reports promptly. It is reported that in some instances the patels have been fined. The registers are being checked at the time of jamabandi.

Propaganda.—Informal health talks were given as a routine by the District Health Officer during his itinerary. Magic lantern lectures were given at Hosanagar, Nidige, Kudalagere and Bheemanakone. The District Health Officer attended the Taluk Conferences held at Honnali, Chennagiri, and Shimoga and gave health lectures in Kanarese.

Poster Exhibitions.—Health poster exhibitions were organised at Nidige as an adjunct to the Baby Show and at Chennagiri and Honnali on the occasion of the Taluk Conference.

Hotel Inspections.—During the quarter 27 hotels were inspected and the proprietors were advised regarding improvements to be effected in their respective institutions.

Tours.—The District Health Officer was on Tour for 15 days in October, 20 days in November and 18 days in December. He visited 48 villages, of which 8 are model villages, and 9 towns. In all these places he checked the vital statistics reporting, verified vaccinations, inspected the villages and towns and suggested remedies for sanitary defects noticed.

Model Villages.—Thirty-four villages have been selected for intensive rural reconstruction work in Shimoga District. Instructions have been issued to the Sanitary Inspectors and Vaccinators to pay frequent visits to the model villages in their jurisdiction. Proper reporting of vital occurrences is insisted upon and the Patels maintain lists of unprotected children in their villages.

Baby Shows.—Baby shows were held during the quarter at the places noted below :—

1. Chennagiri.
2. Honnali.
3. Nidige (Shjmoga taluk).
4. Bheemanakone (Sagar).

In all, 157 babies were brought to the shows. Lectures were given on dietetics, maternity and childwelfare, significance of baby shows and the aims and objects of the Red Cross Society.

Meetings.—The District Health Officer attended two meetings each of the Bhadravathi New Town Board and

District Scout Executive Committee and one meeting of Shimoga Town Municipality.

(c) **Voluntary Organisations.**

RED CROSS SOCIETY.

Maternity and Child Welfare.

Periodical Inspection.—The Lady Sub-Assistant Surgeons of different places have been paying periodical visits to the Maternity Homes at Bilikere, Periyapatna, French Rocks, Seringapatam, Narasimharajapura, Chicknaikanhalli and Bogadi village.

The following equipment grants were sanctioned by the State Branch during the quarter:—

1. A sum of Rs. 200 towards the Maternity Ward at Pavagada, Tumkur district.
2. A sum of Rs. 200 towards the Maternity Ward at Koratagere, Tumkur district.
3. A sum of Rs. 130 towards the Women and Children's Clinic, Tumkur.
4. A sum of Rs. 300 each to the Maternity Homes at Beechaganahalli and Peresandra, Kolar district.
5. A sum of Rs. 300 to the Maternity Home, Rippenpet, Shimoga district.
6. A sum of Rs. 300 to the Maternity Homes, Hiriyyur, Chitaldrug district.
7. A sum of Rs. 300 to the Nursery School attached to the Meenambal Centre, Mysore.

A sum of Rs. 40 was sanctioned towards the recurring charges to the Maternity Home at Sidlaghatta.

The following Building grants were sanctioned during the quarter:—

1. A sum of Rs. 325 to the construction of a compound wall and the installation of electric lighting for the combined dispensary and Child Welfare Centre, Hassan.
2. A sum of Rs. 300 to the proposed construction of a Maternity Ward at Yerukalve, Srinivaspur Taluk, Kolar District.
3. A sum of Rs. 200 towards the construction of Maternity Home at Harnahalli.

The following maintenance grants were sanctioned during the quarter:—

1. One-third of Rs. 200 per year towards the Maternity Home at Sira for a term of 2 years from the date of opening of the Home.

2. A sum of Rs. 20 per annum towards the Maternity Home at Bilikere for a term of 2 years.
3. A sum of Rs. 10 per mensem towards the Maternity Home at Gargeswari.

Appointment of Additional Midwives for 1939.—The State Branch has agreed to contribute towards the cost of meeting the salary of additional midwives to be appointed at the following places:—

1. Doddakavalande (Nanjangud taluk).
2. Kodiyala (Seringapatam taluk).
3. Saligrama (Krishnarajpet taluk).

New Branches were formed at the following places.—

1. Goribidnur (Kolar district).
2. Belur (Hassan district).
3. Hole-Narsipur (Hassan district).
4. Saklespur (do)
5. Hassan
6. Chandrasekharapura (Tumkur district).
7. Turvekere do
8. Davangere (Chitaldrug district).

Work of the Organising Secretary.

Toured the districts of Kolar, Chitaldrug, Hassan, Tumkur and part of Mysore, visiting 38 towns and 33 rural areas.

Red Cross Branches were formed at the following places:—

- | | |
|------------------------------|--|
| 1. Hassan. | 7. Chiknaikanhalli (Re-organised). |
| 2. Hole-Narsipur. | 8. Chandrasekharapura (Tumkur district). |
| 3. Saklespur. | 9. Pavagada. |
| 4. Belur. | 10. Amrutur (Tumkur district). |
| 5. Goribidnur. | 11. Gubbi. |
| 6. Turvekere (Re-organised). | 12. Davangere. |

Arrangements are also in progress for the formation of Red Cross Branches at Tiptur, Madhugiri and Koratagere.

The following Red Cross Branches were inspected:—

- | | |
|-----------------------|-----------------------|
| 1. K. G. F. Branch. | 4. Turuvekere Branch. |
| 2. Chitaldrug Branch. | 5. Sira. " |
| 3. Konanur Branch. | 6. Honnudike " |

The following Maternity Homes were inspected :—

- | | |
|----------------------|-------------------------|
| 1. Allipore. | 9. Honnavalli. |
| 2. Vottadahosahalli. | 10. Huliya. |
| 3. Dudda. | 11. Honnudike. |
| 4. Sira. | 12. Y. N. Hoskote. |
| 5. Turvekere | 13. Kadaba. |
| 6. Chiknaikanahalli. | 14. Hebbur. |
| 7. Pavagada. | 15. Chandrasekharapura. |
| 8. Koratagere. | 16. Bellavi. |

The following Maternity Homes that are ready for opening were also inspected :—

1. Peresandra.
2. Beechaganahalli.
3. Thallak.
4. Nonavinkere.
5. Hagalvadi.

Suggestions have also been given to the Local Bodies concerned for securing the visits of Lady Doctors for the conduct of ante-natal and baby clinics at the following places :—

- | | |
|-----------------|------------------------------------|
| 1. Goribidnur. | 4. Madhugiri. |
| 2. Sidlaghatta. | 5. Marconahalli (P. W. D. Colony). |
| 3. Hiriya. | |

The following Child Welfare Centres and Nursery Schools were inspected and suitable suggestions have been made for making the Institutions more useful to the Public.

- 1 Robertsonpet Child Welfare Centre.
- 2 Chikballapur Nursery School.
- 3 Davangere Child Welfare Centre.
- 4 Chitaldrug do
- 5 Jagalur Nursery School.
- 6 Davangere do
- 7 Combined Child Welfare Centre and Dispensary in Hassan Town. (Run by Methodist Mission.)
- 8 Bethalur Baby Clinic, Tumkur.
- 9 Maternity and Child Welfare Centre, Tumkur.

The work of the Midwives was inspected in the following places :—

1 Goribidnur.	26 Saklespur.
2 Hosur.	27 Arehalli.
3 Allipore.	28 Belur.
4 Vottadahosahalli.	29 Arasikere.
5 Mandikal.	30 Halkur.
6 Chikballapur.	31 Dudda.
7 Sidlaghatta.	32 Amruthur.
8 Chintamani.	33 Marconahalli.
9 Malur.	34 Kunigal.
10 Masthi.	35 Turvekere.
11 Bowringpet.	36 Nonavinakere.
12 Margunkunte.	37 Tiptur.
13 Andersonpet (K.J.F.)	38 Haranahalli.
14 Chitaldrug.	39 Chiknaikanahalli.
15 Davangere.	40 Gubbi.
16 Jagalur.	41 Koratagere.
17 Hiriyur.	42 Pavagada.
18 Hirisave.	43 Kodigenahalli.
19 Chandrasekharapur.	44 Y. N. Hoskote.
20 Channarayapatna.	45 Madhugiri.
21 Sravanabelagola.	46 Sira.
22 Nuggehalli.	47 Hagalvadi.
23 Hole-Narsipur.	48 Chelur.
24 Arkalgud.	49 Honnudike.
25 Konanur.	

Instructions have been issued to the Midwives regarding 'Home Visiting.' It is gratifying to note that most of the Midwives employed in Tumkur, Chitaldrug and Mysore Districts have been regularly attending to 'Home Visiting' in their respective areas.

Junior Red Cross.

A sum of Rs. 200 was sanctioned towards the non-recurring expenditure of equipping the office of the Organising Secretary, Junior Red Cross, which appointment is under the consideration of the Government.

Other Centres.

The work done in the other centres is detailed in the following statement.

Maternity and Child Welfare Work done

No.	Place	Name of Centre	No. of Clinics held		
			Ante-natal	Post-natal	Children
1	Bangalore	Belimut Creche, Bangalore City...	10
2	Do	Civic and Social Progress Association, Bangalore City.	11	7	15
3	Do	Deena Seva Sangha, Malleswaram
4	Do	Mahila Seva Samaj, Basavangudi, Bangalore City.	12	12	12
5	Do	Hebbal Child Welfare Centre, Bangalore.	5	...	18
6	Do	Child Welfare Centre, Bangalore, W. C. and Silk Mills Bangalore.
7	Bethalur	Bethalur Baby Clinic, Methodist Mission, Tumkur.	10
8	Bhadravati	Bhadravati Iron Works Child Welfare Centre.
9	Channapattur	Maternity and Child Welfare Centre
10	Chitaldrug	Do do	9	40	...
11	Chikmagalur	Do do	12	...	12
12	Davangere	Do do
13	French-Rocks	Do do
14	Kengeri	Gurukula Ashram
15	Hassan	Methodist Mission combined Dispensary and C. W. Centre.
16	Kolar Gold Field	Champion Reefs Mines
17	Do	Mysore Mines
18	Do	Nandidroog Mines
19	Do	Oorgaum Mines
20	Do	Sanitary Board Area Child Welfare Centre, Robertsonpet.	13	13	13
21	Kolar	Maternity and Child Welfare Centre
22	Koppa	Do do	13	13	13
23	Mysore	Civic and Social Progress Association	6	...	45
24	Do	Vani Vilas Maternity and Child Welfare Clinic.	13	...	11
25	Do	Devaraj Centre
26	Do	Gajasala Centre
27	Do	Krishnarajendra Mills Creeche	6	3	6
28	Do	Mahila Seva Samaj, Ante-natal and Child Welfare Centre.
29	Do	Mallamma Centre
30	Do	Savoy Centre
31	Do	Subramanyam Centre
32	Do	Sri Vani Vilas Milk Centre
33	Do	Vocational Institute for Women
34	Do	Toddler's School in Gajasala Centre
35	Do	Do in Nanjaraja Bahadur Chattram.
36	Do	Do in Kantharaj Urs Chowk.
37	Mandagadde	Maternity and Child Welfare Centre.
38	Nanjangud	Do do	9	...	9
39	Sarjapur	Do do
40	Shimoga	Ante-natal and Baby Clinic (Methodist Mission).	12	12	...
41	Do	Lady Mirza Ismail Milk Centre
42	Sivasamudram	Maternity and Child Welfare Centre.	10	8	8
43	Tarikere	Do do	7	...	2
44	Yarnahalli	Do do	12	12	12
Total (Mysore State)			160	120	182

during the quarter October-December, 1938.

No. of Cases examined								No. of Children that were			No. of House Visits paid			Remarks
Pregnant women				Children				Weighed	Bathed	Given milk	First visit	Re-visit	No. of deliveries attended	
First Examination	Re-Examination	No. treated	No. referred to Hospital	First Examination	Re-Examination	No. treated	No. referred to Hospitals							
...	18	...	47	58	58	
8	6	4	41	41	41	216	216	8	
...	...	Report	Not	received	
85	96	2	3	195	84	13	1	196	120	78	26	
21	14	35	35	14	227	100	...	232	...	85	1,185	237	19	
...	...	Report	Not	received	
...	4	23	20	3	12	...	15	4	5	...	
...	...	Report	Not	received	
...	...	Report	Not	received	50	40	51	
72	41	30	30	90	140	...	
48	99	147	147	29	150	179	179	33	33	33	
...	...	Report	Not	received	
...	...	Report	Not	received	
...	1,964	25	
...	...	Report	Not	received	
...	...	Report	Not	received	
...	...	Report	Not	received	
62	72	10	14	30	42	7	6	38	38	33	201	327	31	
...	...	Report	Not	received	
48	182	230	10	27	110	137	3	116	6	2	17	8	6	
6	1	6	...	24	24	24	24	24	2	
487	830	817	...	64	11	75	
...	...	Report	Not	received	
...	...	Report	Not	received	
25	30	12	8	42	48	18	12	90	20	20	22	30	1	
...	...	Report	Not	received	
...	...	Report	Not	received	
...	...	Report	Not	received	
...	...	Report	Not	received	
...	...	Report	Not	received	
...	
92	64	64	50	28	18	18	18	30	30	30	25	18	...	
76	299	
...	
30	20	10	11	16	14	14	...	23	23	...	30	14	23	
28	97	110	52	46	162	120	...	8	2	...	221	620	74	
24	17	8	...	48	32	4	2	48	30	2	10	8	...	
1,112	1,368	1,481	360	572	945	2,612	227	1002	830	843	2,191	1,791	241	

BUREAU OF EPIDEMIOLOGY.

B. ANANTHASWAMY RAO, B.Sc., M.B.B.S., M.P.H.,

Superintendent.

The Superintendent inspected the anti-malaria work at Nagenhalli, Mandya, Thippagondanahalli and Marconhalli. The recommendation for the control of malaria in Chikmagalur, Sakrepatna and Jog were approved by Government and work was actually started in all the three places during the quarter. The Algeswara Tea Estates near Sollebyle, Balehalli near Chikmagalur and Garje near Birur were visited to examine the malaria situation in each of the three places for suggesting suitable preventive measures.

In view of the hyperendemic malaria conditions in the irrigated area under the Bhadra canal resulting in very slow exploitation of the agricultural possibilities of the area, the question of establishing a combined health and malaria unit is under consideration. Lectures and demonstrations in connection with the special course in Malariology to the students of the Medical College and School were given as usual. A detailed report on the deputation of the Superintendent to Malaya is under way.

Central Laboratory.

An Entomological Assistant was appointed during the quarter as per Government Order No. G. 8854-5 P.H. 141-36-11, dated 7th May 1938. He was deputed to work under the Entomologist of the Agricultural Department for six weeks to get familiar with the routine laboratory work. It is proposed to utilise his services to continue the systematic studies on *A. stephensi* and fresh investigations of interest in respect of local anophelines.

MALARIA.**Nagenhalli.**

There was no change in the programme of the anti-larval work. A study of the relation of the chemistry of the water in the paddy plots to the anopheline fauna in them was started. Samples of water from the paddy plots, the feeder channels, the drainage channels were

regularly examined and the species of anophelines found breeding and their density recorded. Experiments were also conducted to study the influence of shading by the paddy crop on the output of *A. culicifacies*. The experiments will be repeated for a few more seasons before any inferences are attempted.

The Devaraya Nala, a feeder channel running in a deep cutting in the Nagenhalli Farm premises was completely cleared of all vegetation on the banks and observations on the normal anopheline fauna were recorded after stopping Parisgreen spraying. This length of channel is ideally situated to run a carefully controlled experiment on the value of different shade plants on *A. fluviatilis* and *A. culicifacies* breeding in irrigation channels.

Mudigere.

The Health Officer in charge of Mudigere Malaria Station was placed in additional charge of malaria control work in Chikmagalur town and Sakrepatna. He visits these two places twice a month and guides the Assistant Sanitary Inspectors in charge.

Studies in herbage as an antimalaria measure were started during the quarter. Short lengths of the bridge channel and a short length of a waste water channel running parallel to the Bijavalli road were packed with locally available green leaves and the results are being studied. Only these small lengths were packed this time as the staff had no experience in this work and it is hoped that the practical value of this measure as a means of anopheline control in rural areas will be examined in all its aspects.

With a view to extend the usefulness of the malaria station at Mudigere to the adjacent rural area, it is proposed to make a detailed malaria survey of all the villages within a five-mile radius of the town. After the completion of these surveys, it is proposed to start experimental control of malaria by adopting methods which can be worked by a closer co-operation of the villagers.

Hiriyur.

The question of eradicating malaria in Hiriyur by permanent antimalaria measures has been under examination for some time. The chief anopheline breeding areas in the half-mile zone round the town are (1) the

river bed with the central meandering stream and the numerous pools, (2) the two main feeder channels, (3) about 11 valleys on either side of the river and between the two main channels (4) about 22 swamps and numerous seepages.

A detailed survey of all these areas has been completed and it is proposed to drain all the valleys, swamps, etc., by opening out drains suitably aligned. All except two of these valleys will have for the time open drains to study the behaviour of the ground water. Experimental subsoil drainage with rubble drains and locally made tile pipe will be put in, in the two other valleys.

It is also proposed to instal automatic flushing syphons in some of the valleys and a newly designed gate for attempting flushing of one of the two main feeder channels.

The river bed itself is being surveyed to prepare a detailed scheme for canalising and confining the meandering course of the stream in a central defined canal suitably protected.

Mandya.

The biannual spleen and parasite surveys of the group of villages under study were done during the quarter.

It will be seen that except for Malligere and Kodihalli, a definite downward trend in the spleen rates since the starting of the control work is being maintained. The question of control of malaria in these two villages is complicated by the adjacent agricultural farms not under control, where the residents of these two villages spend considerable time for various reasons. The other and the more important difficulty is the present uncontrolled planting of paddy and the varying extent of land under this crop.

It has been well established that the paddy plots are dangerous as sources of *A. culicifacies*, the local malaria carrier, only during the period of transplantation and when allowed to stay fallow. As a consequence of the rotation of crops and the practice of harvesting of the sugarcane crop in vogue, the paddy planting goes on throughout the year and the extent of land under the paddy crop varies considerably.

Maps are being prepared for these two villages to show the extent of land under paddy during the different months in the year and a special study is being made of this aspect of the problem.

Sivasamudram and Shimshapur.

The annual spleen survey of Sivasamudram and Shimshapur colonies was conducted during October 1938. The results are as follows :

Place	No. Ex.	No. Pos.	Sp. Rate
Sivasamudram.			
Maratta Lines ...	65	16	24.6
Primary School ...	72	11	15.3
Urdu School ...	30	12	40.0
Total ..	167	39	23.3
Shimshapur.			
Netkal area	136	45	33.1
Yerragatta	66	30	34.9
Ittikegud P. Line ...	68	15	22.1
Pallakkivar ...	62	30	48.4
Hulbella ...	82	69	84.1
Total	434	189	43.5

Bangalore City.—In view of the existence of a residual amount of mosquito nuisance in some parts of the city, a detailed re-survey of the whole city was made and a report incorporating suggested remedial measures forwarded to the Commissioner, Bangalore City Municipality. The existence of wet cultivation near Mavalli, Seshadripuram tank and the sewage fed grass farm behind the Magadi Road Ookad are the chief sources of gross culex breeding recommended to be tackled immediately.

The staff examined 2,813 wells during the quarter and re-stocked 1,776 wells with gambusia. The number of anophelines and culicines caught during the quarter were 186 and 442, respectively as against 190 and 535 during the corresponding quarter of the previous year.

The examination of blood smears taken during the last survey in July was completed during the quarter. The parasite rate for the whole city for 1938 is found to be 0.91 as against 0.5 for 1937.

Mysore City.—The absence of regular drainage in the Vontikoppal extension has created conditions favourable

for culicine breeding. During one of the inspections, the whole area was examined and numerous earth drains with stagnant sullage were seen and the control of culicine breeding in these has presented a special problem.

Saw dust soaked in Malariol was tried and it was found not satisfactory. All the drains are now being regularly oiled every week.

The staff examined 704 wells during the quarter and re-stocked 704 wells with fish.

Chikmagalur.—The anti-malaria work in Chikmagalur was sanctioned in Government Order No. L. 2481-3—Ml. 216-37-7, dated 20th September 1938 and work was started in November 1938. The staff consists of one Assistant Sanitary Inspector trained in anti-malaria work and six Fieldmen.

A detailed map showing all the anopheline breeding places within a half mile zone from the periphery of the town was prepared. This half mile zone is divided into five blocks and one fieldman is assigned to each of these five blocks. He works on a fixed programme and covers all the breeding places in the course of a week. The other fieldman prepares the Paris-green mixture throughout the week.

The questions relating to the abolishing all the wet fields within a two furlong zone of the town, the closure of the three irrigation canals running through the town and the attention to the waste weir halla, are being examined.

Sakrepatna.—Anti-malaria work in Sakrepatna was sanctioned in Government Order No. G. 1307-9—P. H. 27-37-6, dated 6th August 1938 and work was started in November 1938.

As a preliminary to starting anti-larval work, the whole population of the village was given a course of blanket treatment with totaquina prepared at the Government Industrial and Testing Laboratory and plasmoquine. Out of a population of 1,400, the complete course which consisted of seven days' treatment with 15 gr. a day of totaquina and five days' with two tablets of plasmoquine a day (adults was taken by 1358 people).

The anti-larval work is in charge of a trained Assistant Sanitary Inspector and eight Fieldmen attended to spraying of Paris-green.

Proposals for the improvement of the moat round the village and the abolition of wet cultivation within the two furlong zone are under examination.

Jog.—In view of the starting of a hydro-electric scheme at Jog on the river Sharavati, and the consequent aggregation of labour estimated to number about 10,000 drawn from different parts in and outside the State, it was found necessary to undertake the control of malaria in the area to protect the labour and the superior staff. This is an area hyper-endemic for malaria and the experience of the advance party of the superior staff for arranging details of the scheme in the early part of 1938 before the onset of monsoon gave a forecast of what was to be expected if malaria was not effectively controlled.

The staff sanctioned is one full-time second class Health Officer with necessary training in anti-malaria work, two Sanitary Inspectors and 30 Fieldmen. It is proposed to use oil in this area as the larvicide owing to practical difficulties in getting the necessary diluent for the use of Paris-green.

The chief sources of anophelines are the river bed which in the summer months becomes a series of rocky pools affording ideal conditions for *A. culicifacies* and a number of valleys draining into the river.

A detailed map of all the breeding places has been prepared and suitable alternate sites selected for the location of the permanent colony and the cooly lines.

As in Sakrepatna and earlier in Marconhalli, provision has been made for the administration of a course of blanket treatment with totaquina for the labour and atebrin for the superior staff followed by a course of plasmoguinine to all as a means of reducing the initial parasitism amongst the population to be protected.

Alageswar Tea Estate (Sollebyle).—On the request of the Manager, Alageswar Tea Estates, for a malaria survey of the Estates and advice for the control of malaria, the area was visited on the 19th December 1938. The total labour force of 600, resident on the estate were living in three groups, one of which the Karehoklu lines had the highest incidence of malaria with a spleen rate of 65 per cent.

After a survey of all the possible anopheline breeding areas it was recommended that a bi-weekly spraying of all the sheds with a pyrethrum extract may be tried as an anti-malaria measure. Certain permanent measures like drainage of all the swamps at the head of ravines, installation of automatic syphons for flushing, the subsoil drainage of some of the small water courses and shading

of the water courses with quick growing shade plants were suggested to be taken as funds permitted.

Balehalli.—This is a small village about two miles from Chikmagalur reported to be getting gradually depopulated on account of malaria. The village was inspected with a view to examining the suitability of a new site proposed for shifting the village.

The site proposed is more open and shifting to this place, it was felt, while not completely solving the malaria problem of the village would give the villagers a partial protection as the new site is about two furlongs for the important anopheline breeding places.

Garje.—This is a populous village about ten miles from Birur situated next to a big tank. The whole area is dry bordering on the Chitaldrug Taluk. The tank itself is fed by a channel from an anicut higher up.

An examination of the children showed a spleen rate of nearly 80 per cent and from the history available, the malaria in the village was new, consequent on an unusual rainfall two years previously. This was the second season of malaria the villagers were experiencing and the nature of the country and the spleens examined indicated a post-epidemic condition.

Control of malaria in the village by anti-larval work was considered impracticable and hence arrangement for mass treatment of the entire population for the next three seasons were suggested.

Hookworm.

A third class Health Officer for doing hookworm work was sanctioned in Government Order No. G. 8854-5—P. H. 141-36-11, dated 7th May 1938. The Officer appointed had not yet reported himself for duty during the quarter and no anti-hookworm work was done during the quarter.

Guineaworm.

The guineaworm staff was continued with headquarters at Chitaldrug during the quarter. The Assistant Sanitary Inspector in charge visited 319 villages out of which 271 were first visits. He examined 163 wells and re-stocked 28 wells with fish and treated 8 wells with perchloron.

There were no villages with any active cases of guineaworm during the quarter.

Tuberculosis.

A tuberculosis survey of Sira town was undertaken during the quarter. A house-to-house survey was made and information regarding the conditions of living, density of inmates per house, the economic status of each family and the general sanitation of each was collected on a house survey card. The survey was not yet complete by the end of the quarter.

Control of Epidemic Diseases.

Anti-Rat campaign by Cyanogas.—The trained staff of the Bureau carried out anti-rat campaigns using cyanogas in Doddarayapete, Chamarajnar Taluk, Ramanahalli, Mysore Taluk and Birur Town. They treated 120, 231 and 620 houses respectively, in these three places.

During the quarter 663 attacks with 394 deaths from plague in 110 places and 44 attacks with 15 deaths from small-pox in ten places were reported. As a preventive measure 70,050 anti-plague inoculations, 34,347 vaccinations and 1,942 anti-cholera inoculations were done. Details of vaccinations done are given in the accompanying statement.

Area	Plague	Small-pox	Cholera	Anti-plague inoculations	Vaccinations	Anti-cholera inoculations
Mysore Taluk	312	2
H. H. H. H.	3,311	144
H. F. G. G.	2,022	932
H. F. G. G.	1,074	82
Mysore Taluk	2,100	601
Birur Town	2,111	103
Total	11,119	1,703	9,632	10,033	11,132	1,404
Chamarajnar Taluk
Doddarayapete
Ramanahalli
Birur Town
Total	11,119	1,703	9,632	10,033	11,132	1,404
Total	11,119	1,703	9,632	10,033	11,132	1,404

Statistics of Primary and Re-vaccinations done in Mysore State during the quarter, October to December 1938.

District	Number of vaccinations done				Primary vaccinations					Re-vaccinations				
	Total	Unknown	Unsuccessful	Successful	Total	Unknown	Unsuccessful	Successful			Total	Unknown	Unsuccessful	Successful
								All Ages	Under 1 year	Over 1 & under 6 years				
Bangalore District (Excluding City.)	6,254	209	1,459	4,556	4,636	Report not Received.	1,156	1,368	1,618	64	1,056	496		
Chitaldrug District	4,811	340	738	3,733	4,097	145	4,058	809	714	125	335	254		
Hassan District	3,464	259	516	2,689	2,528	215	3,479	389	936	177	422	337		
Kadur District	82	2,352		
Kolar District		
(Excluding K. G. F.)		
Mysore District	6,589	394	1,150	5,045	5,464	283	4,342	1,468	1,125	111	811	203		
(Excluding City).	Report not Received.		
Shimoga District		
Tumkur District		
Mysore State (Excluding Cities and Special Areas).	21,118	1,202	3,895	16,023	15,725	725	14,731	3,772	4,393	477	2,624	1,292		
Bangalore City	2,711	102	1,309	1,300	1,318	77	1,207	857	1,393	25	1,275	98		
Mysore City	2,162	201	791	1,280	1,210	119	1,072	729	952	82	712	158		
Kolar Gold Field	1,944	55	521	1,368	1,207	26	1,117	682	737	29	457	251		
H. T. C., Closepet	3,525	235	1,557	1,723	1,065	20	1,092	588	2,460	215	1,564	691		
R. H. U., Mandya	2,611	144	463	2,004	1,670	42	1,587	645	941	102	422	417		
Model Range	276	3	...	273	276	3	273	164		
Mysore State (Including Cities and Special Areas).	34,347	1,942	8,454	28,921	28,471	1,012	21,019	7,437	10,876	930	7,044	2,902		

TABLE I.
Spleen and Blood Examinations made in the Experimental Malaria Stations during the quarter ended December 1938.

Spleens	0-9				10-19				20 and over				All ages			
	No. Ex.	No. Inf.	% Inf.		No. Ex.	No. Inf.	% Inf.		No. Ex.	No. Inf.	% Inf.		No. Ex.	No. Inf.	% Inf.	
Spleens not examined
Spleen Negative	130	3	2.3	...	33	3	3.0	...	12	175	6	3.4	...
Palpable	14	1	7.1	...	2	3	19	1	5.2	...
1	18	3	16.7	...	3	1	33.3	...	1	22	4	18.1	...
2	11	1	9.1	...	1	12	1	8.3	...
3	7	1	14.3	7	1	14.3	...
4	1	1
5
All persons with palpable Spleen.	51	6	11.9	...	6	1	16.7	...	4	57	7	12.3	...
Grand Total—All Spleens ...	161	9	4.9	...	39	4	10.3	...	16	236	13	5.5	...
Spleen Rate ...	161	51	28.2	...	39	6	15.4	...	16	4	25.0	...	236	57	24.1	...

TABLE II.

Adult Catches in Control and Peripheral Areas.

Species	Nagenahalli		Mudgere		Iriyur		Nagoonhalli	
	Pd. zn.	Pl. zn.	Pd. zn.	Pl. zn.	Pd. zn.	Pl. zn.	Pd. zn.	Pl. zn.
	<i>A. aconitus</i>	3	72	3	47	43	23	4
<i>A. aitkeni</i>
<i>A. annularis</i>	7	35	...	56	...	15
<i>A. barbirostris</i>	4	7	...	1
<i>A. culcifacies</i>	16	83	27	32	119	352
<i>A. fluviatilis</i>	17	62	...	1	117	251
<i>A. hyrcanus</i>	166	331	1	18	...	3	87	...
<i>A. jamesii</i>	5	18	5	19	3	1	2	...
<i>A. jeyportiensis</i>	15	10	215	786
<i>A. karwari</i>	1
<i>A. leucosphyrus</i>
<i>A. maculatus</i>
<i>A. minimus</i>
<i>A. majidi</i>	3
<i>A. pallidus</i>	...	4	4	67	3	2	2	...
<i>A. splendidus</i>	2
<i>A. stephensi</i>	2	97	113
<i>A. subpictus</i>	18	57	12	35	252	222	29	...
<i>A. tessellatus</i>	...	8	2	15	12	33	1	...
<i>A. turkudi</i>	2	1	4
<i>A. vagus</i>	25	44	17	21	59	55	21	...
<i>A. varuna</i>	5	...	2

TABLE I

TABLE III.

Species of Malaria Parasites

		Nagenahalli						
Age	Total No. Inf.	B. T.		M. T.		Q.		
		No. Inf.	% Inf.	No. Inf.	% Inf.	No. Inf.	% Inf.	
1	2	3	4	5	6	7	8	
0-9	3	1	33.3	2	66.6	
10-19	
20 and over	
All ages	
		Mudgere						
Age	Total No. Inf.	B. T.		M. T.		Q.		
		No. Inf.	% Inf.	No. Inf.	% Inf.	No. Inf.	% Inf.	
9	10	11	12	13	14	15		
0-9	2	2	100.0	
10-19	2	2	100.0	
20 and over	
All ages	4	2	50.0	2	50.0	
		Hiriyur						
Age	Total No. Inf.	B. T.		M. T.		Q.		
		No. Inf.	% Inf.	No. Inf.	% Inf.	No. Inf.	% Inf.	
16	17	18	19	20	21	22		
0-9	4	1	25.0	2	50.0	1	25.0	
10-19	
20 and over	
All ages	4	1	25.0	2	50.0	1	25.0	

BUREAU OF LABORATORIES.

(a) PUBLIC HEALTH INSTITUTE.

G. M. DOMINICK, M.R.C.S., D.P.H.,

Superintendent and Chemical Examiner.

1. **Bacteriological Section.**—During the quarter 4,253 specimens were examined as against 4,052 in the previous quarter.

No.	Particulars	Positive	Negative	Special samples	Total
1	Blood for Wassermann test ...	920	1,320	...	2,240
2	Do Widal test ...	58	61	...	119
3	Do B. pestis ...	3	5	...	8
4	Do Blood count	5	5
5	Do Malarial parasite ...	1	11	...	12
6	Smear for L. B.	1	...	1
7	Sputum for T. B. ...	4	8	...	12
8	Motion for Ova ...	60	629	...	689
9	Section cutting	3	3
10	Urine	15	15
11	Smear for G. C. ...	1	6	...	7
12	Milk	1
13	Motion for cholera	1	...	1
14	Smear for Diphtheria	4	...	4
15	Water for Typhoid	335	...	335
16	Water	740	740
17	Auto-vaccine	1	1
18	C. S. F.	2	2
19	Motion for Typhoid	58	...	58
	Total ...	1,047	2,439	767	4,253

Typhoid Investigation.—During the quarter a typhoid survey was made and the samples analysed were:—

		Positive.	Negative.	Total.
1.	Blood ...	7	28	35
2.	Motion and urine ...	37	77	114
	Total ...	44	105	149

2. **Chemical Section.**—In this Section 673 samples were examined as detailed below :—

<i>Particulars.</i>		<i>Number Examined.</i>
1.	Water ...	80
2.	Water for Residual Chlorine ...	565
3.	Milk ...	1
4.	Paris-green ...	7
5.	Ragi ...	1
6.	Distilled water ...	1
7.	Petrol ...	1
8.	Rust and Sediment ...	1
9.	Motion ...	1
10.	Pyridine ...	1
11.	Light Caoutchoucine ...	1
12.	Wood Naphtha ...	1
13.	Brandy ...	1
14.	Jaggery ...	1
15.	Coffee Powder ...	1
16.	Toddy ...	1
17.	Dhal ...	8

3. **Medico-legal Section.**—Ninety-four cases with 384 articles were examined during the quarter :—

<i>Nature of Examination.</i>	<i>No. of Cases.</i>	<i>No. of Articles.</i>
1. Mammalian blood ...	36	173
2. Suspected human poisoning ...	41	170
3. Rape ...	10	26
4. Explosives ...	4	10
5. Silver Lead ...	1	3
6. Gun ...	1	1
7. Opium ...	1	1

The results of examination were as follows :—

In	32 cases mammalian blood was detected.
..	1 „ arsenic „
..	1 „ nitric acid „
..	1 „ hydrochloric acid „
..	1 „ alcohol „
..	1 „ spermatozoa „
..	4 „ potassium chlorate „

4. **Vaccines Issued.**—The following quantities of vaccines were issued during the quarter :—

1.	T. A. B. Vaccine ...	25,298 c. c.
2.	Cholera Vaccine ...	7,005 c. c.

5. **Fees.**—The amount of fees received for the examination of specimens and supply of vaccines is detailed below:—

Items	Quarter			Quarter		
	Octr.—Decr.			July—Sept.		
	1938.			1938.		
	Rs.	a.	p.	Rs.	a.	p.
1. Bacteriological section ...	65	12	0	34	0	0
2. Chemical section ...	70	0	0	130	0	0
3. T. A. B. Vaccine ...	515	7	0	117	4	0
4. Cholera Vaccine ...	149	9	0	95	15	4
5. Miscellaneous receipts ...	5	2	6	500	0	0
Total ...	805	14	6	877	3	4

The outstandings were as follows:—

Items	Demand			Collection			Balance		
	Rs.	a.	p.	Rs.	a.	p.	Rs.	a.	p.
1. Bacteriological section.	168	7	0	157	15	0	10	8	0
2. Chemical section.	405	0	0	325	0	0	80	0	0
3. T. A. B. Vaccine.	3,682	11	0	746	5	0	2,936	6	0
4. Cholera Vaccine.	19,555	5	4	2,127	0	0	17,428	5	4
5. Miscellaneous receipts.	511	12	0	511	12	0
Total ...	24,323	3	4	3,868	0	0	20,455	3	4

6. **Nutrition Experiments.**—As mentioned in the previous report, in order to estimate the anti-neuritic value of cereals generally used in Chitaldrug district, the following cereals, *viz.*, milled rice, pounded rice, ragi, red cholam, white cholam, pounded navane and milled navane, were experimented upon. Proportions of togari dhal to be used with milled and fully polished rice for mitigating the ill-effects of the latter are also being experimented upon.

(b) VACCINE INSTITUTE.

S. R. BHOMBORE, M.B., B.S.

Superintendent-in-charge.

Mr. J. A. Iswaramurthy, Superintendent, Vaccine Institute, was granted furlough on average salary for six months from November 9, 1938, preparatory to retirement,

as per Government Notification No. G. 5475 P. H. 38-38-7, dated December 3, 1938. He handed over charge to Mr. S. R. Bhombore, Health Probationer.

The demand for vaccine lymph was met in full during the quarter under report. The health of the calves was satisfactory.

The following is a summary of work done at the Institute:—

	<i>Particulars.</i>	<i>Number.</i>
1.	Calves waiting on October 1, 1938 ...	9
2.	„ replaced against those returned during the previous quarter ...	nil
3.	„ purchased during the quarter ...	44
4.	„ waiting died ...	nil
5.	„ available for vaccination ...	53
6.	„ waiting on January 1, 1939 ...	9
7.	„ vaccinated during the quarter ...	44
8.	„ vaccinated and remained uncollected on October 1, 1938 ...	3
9.	„ vaccinated and rejected ...	1
10.	„ vaccinated and died (uncollected) ...	nil
11.	„ vaccinated and whose pulp was collected ...	43
12.	„ vaccinated and remained over for collection of lymph on January 1, 1939 ...	3
13.	Lymph produced during the quarter was 17,152 grains of pulp equivalent to ...	2,14,000 cases
14.	„ remained on October 1, 1938 ...	2,47,930 „
15.	„ produced during the quarter enough for ...	2,14,400 „
16.	„ available enough for ...	4,62,330 „
17.	„ issued during the quarter enough for ...	94,830 „
18.	„ discarded due to defective potency from storage enough for ...	85,380 „
19.	„ utilised for 'seed' test, etc., enough for ...	20,520 „
20.	„ remained over on January 1, 1939	2,61,600
21.	Income realised including arrears as per accounts of Office ...	Rs. 2,483 11 0
22.	Expenditure incurred during the quarter... „	5,538 13 0

Percentage Success in Primary Vaccinations.

Model Range.—Primary vaccinations done in the Model Range with the lymph of varying age periods for clinical test on children before releasing for general issue were observed to give a success-rate of 100 per cent. The oldest lymph used was preserved for about three months

and 25 days from date of production before use and the freshest 2 months and 29 days, the average period being 3 months and 12 days.

Other Areas.—The percentages of successful primary cases reported in other areas were:—

<i>Area.</i>	<i>Percentage.</i>
Health Training Centre, Closepet ...	98'8
Rural Health Unit, Mandya ...	97'5
Bangalore City ...	97'3
Mysore City ...	98'3
Kolar Gold Field ...	94'6
Rest of State ...	92'1

BUREAU OF HEALTH EDUCATION.

G. N. SESHADRI, L.M.S., D.P.H.,

Superintendent.

Cinema Publicity.—During the quarter under report cinema publicity was carried on in the districts of Bangalore, Mysore, Kolar, Hassan, Tumkur and Chitaldrug, 53 cinema shows on health subjects being arranged for a total approximate audience of 26,000 persons. As usual the cinema staff and equipment were conveyed in the departmental motor van, the total distance covered during the quarter being 2,165 miles.

Programme of Cinema Shows.

<i>Place of Show.</i>	<i>No. of Shows.</i>
1. Mysore Dasara Exhibition ...	7
2. Taluk Conferences ...	5
3. State Women's Conference ...	6
4. Selected villages in Kolar, Hassan, Tumkur, and Chitaldrug districts ...	14
5. Selected parts of Bangalore City ...	7
6. Baby Week, Konanur ...	2
7. Health Training Centre Area, Closepet ...	6
8. Talkad Jatra ...	3
9. Christian Teachers' Association ...	1
10. Central High School, Bangalore ...	1
11. Scout Rally, Kolar ...	1
Total ...	53

Health Lectures.—The Publicity Officer, during his tours, visited 14 Primary Schools and one High School and gave health talks to teachers and pupils. The subjects dealt with were personal hygiene, water and food.

Health Exhibition.—In the Health Section of the Dasara Exhibition, besides model houses, village planning, modes of spread of infectious diseases, vital statistics, and maternity and child-welfare, a large section was devoted to nutrition and its importance to health. This section included the exhibition of living birds under experimental feeding with unpolished and different degrees of polished rice, the several kinds of rice under experiment, samples of varieties of food articles that help to constitute balanced diets, and fruits and vegetables grouped according to their different vitamin contents. It is reported that the public appreciated the arrangements made in drawing their attention to the deficiencies in our present day foods.

A health section was also got up at Hassan in connection with the State Women's Conference.

Newspaper Publicity.—Weekly bulletins in regard to the state of public health in the State and the convictions secured in Bangalore and Mysore Cities under the Mysore Prevention of Adulteration Act were published in the local English and Kanarese newspapers.

Distribution of Health Literature.—During the quarter 420 pictorial posters and 31,200 leaflets on health subjects published by the department were distributed. Eleven thousand three hundred and thirty copies of the "Mysore Arogya" were distributed to the Village Panchayets through the Amildars. This issue of Mysore Arogya contained an article on rice, polished and unpolished, which attracted attention. Requests for permission to reproduce the article were also received.

Health Education in Jatras and Fairs.—Opportunity was availed of to educate the public in health matters through the sanitary arrangements made at the Panchalinga Darsana Jatra at Talkad, where pilgrims numbering about a lakh of persons had congregated. In addition to the usual health cinema shows and exhibition of health posters, the pilgrims were given the benefit of protection by anti-cholera inoculation by the provision of a chain of inoculating centres in the State's border. In all 3,500 persons coming from suspected areas were inoculated against cholera. River banks being the places usually mostly fouled by the pilgrims, more than one hundred borehole latrines with cement concrete slabs and thatty enclosures in convenient groups, separately for males and females, with provision of water nearby, were put up on

either side of the usual route to the river bed. This arrangement elicited expressions of satisfaction among the pilgrims, especially women, for the neatness and privacy afforded. Plentiful supply of filtered water in pipes within easy reach of every pilgrim and at the door of every kitchen provided for mass feeding, showed the advantages of using purified water supply especially in jattras.

BUREAU OF RURAL HEALTH.

(a) HEALTH TRAINING CENTRE, CLOSEPET.

T. CHANDRASEKHARAIYA, B.A., M.B.B.S., M.P.H.,

Health Officer.

During the quarter Mrs. Alice Moore, Tipton, U.S.A., C. C. Paul, Esq., Rural Welfare Officer, Hyderabad, Mr. Fazl Mohamed Khan with the Hyderabad Delegation, visited the Centre.

In place of the midwife who resigned in the previous quarter a new midwife was appointed so that the staff of the centre was complete.

Plague.—Plague infection which was reported from Lakkojanahalli in the 'B' Division, in the previous quarter, continued to prevail till about the middle of November. As the people did not get themselves inoculated immediately and as they did not evacuate the village quickly more attacks and deaths became inevitable. When cases began to develop, both among the inoculated and among the uninoculated, and when people found that the fatal cases occurred only among the uninoculated, it became easy to get all the people inoculated and to persuade them to evacuate the village. There were in all 22 attacks and 8 deaths.

As an anti-rat measure, this village and 8 others situated within a radius of about a mile were cyanogased twice within a period of a month.

With the exception of this infection the area was practically free from all major epidemic diseases.

Typhoid.—There were four attacks with one death as against 11 attacks with one death in the previous quarter. The infection was sporadic, and all necessary precautions were taken to prevent the spread of infection. Twelve contacts were given anti-typhoid inoculations.

Dysentery.—During the quarter 25 attacks and two deaths were reported as compared with 75 attacks and 10 deaths in the previous quarter. The disease was sporadic and the usual precautions were taken to prevent the spread of infection.

Measles.—Fifteen cases of measles with no death were reported.

Chickenpox.—Twelve cases of chickenpox with no death were registered.

Tuberculosis.—One case of pulmonary tuberculosis with no death as against five cases with two deaths during the previous quarter were registered.

Malaria.—There was a definite rise in the incidence of malaria in A, B and E Divisions. The staff distributed 14 lbs. of quinine in the affected villages.

Chlorination.—According to routine all the drinking water wells in the Centre Area were chlorinated.

Vital Statistics.—The Sanitary Inspectors checked the reports of births and deaths in the area according to routine. As a result of this a further improvement in the reporting was effected; of 658 births 24 (3·6 per cent) and out of 272 deaths 4 or (1·5 per cent) were discovered and registered. During the quarter 658 births, 272 deaths, 103 infant deaths, 12 still-births and three maternal deaths were registered.

Vaccination.—During the quarter 3,435 vaccinations were done in the area as against 4,350 during the previous quarter. Of these 1,075 were primary and 2,460 re-vaccinations. The primary vaccinations gave a success rate of 97·8 per cent and the percentage of those whose reaction proceeded to the pustular stage among the re-vaccinations was 30·2.

Maternity and Child Welfare.—The work of the Public Health Nurses and Midwives was satisfactory. One more clinic was started at Settihalli in Mattikere Division from the month of November as this division had no clinic till now. During the quarter 69 clinics were held at which 176 pre-natals, 559 infants and 595 pre-school children and 206 others attended.

Midwives.—The midwives attached to this Centre conducted 359 deliveries during the quarter. Out of 670 deliveries conducted in the Centre area, 359 or (53·6 per cent) were done by the Unit midwives and the remaining 311 by dais and others.

School Medical Inspection.—During the quarter 177 boys out of 348 in six schools were examined and advised regarding personal cleanliness. A total of 203 boys were referred to the L. F. Dispensary, Channapatna, for treatment.

The Parent-Teachers' Association, Mattikere, which was started during the previous quarter met thrice during this quarter. Arrangements are being made for providing midday lunch for the students of the school with the co-operation of the people in the neighbouring villages. It is hoped that this arrangement will run on a regular footing from the next quarter.

The proposals for giving a short course of instructions to the teachers to obtain their co-operation and ensure uniformity in the teaching of health habits to school children have been sanctioned and the classes will start during the early part of the next quarter.

Laboratory Examinations.—Nine blood samples were sent to the Public Health Institute for Wassermann reaction; 72 blood smears were examined at the office laboratory for malarial parasites; 15 sputum smears for T. B., 23 urine samples and five smears for G. C. and B. Laprae were also examined; 26 samples of faeces for hookworm ova were examined at the office laboratory and 497 samples were sent to the Public Health Institute for examination for ova.

At the Centre Office 351 patients were given consultations and necessary instructions were given and 880 patients were treated for minor ailments. In the villages and at clinics 3,521 patients were given emergency treatment.

(b) RURAL HEALTH UNIT, MANDYA.

C. RAMASWAMI, L.M.P.,

Officer-in-charge.

Plague.—The Unit area was free from plague and cholera in the quarter under report. Four attacks with two deaths were reported from Hebberalu, Maddur taluk, a village outside the Unit area. As per instructions from the District Health Officer, Mysore, anti-plague inoculation work was taken up in the village immunising 142

persons (51 done by L. F. Dispensary Doctor, Maddur and 91 by the Health Officer).

Small-pox.—During the quarter one case of small-pox was reported from Buthanahosur, in Kothathi Division. On investigation it was found that the case (an unprotected child) was imported from Umrahalli, Maddur taluk, where the infection was prevailing. Two adult persons, vaccinated in childhood and contacts of the first case, were attacked with modified small-pox.

Vaccination.—Intensive vaccination work was taken up immediately in the infected village and 23 unprotected children and 100 persons were vaccinated and the spread of the disease was arrested. In all, the Unit staff performed 1,587 primary and 841 re-vaccinations in the quarter under report.

Midwives.—During the quarter the jurisdictions of both the midwives were reduced, each being given 10 villages with a population of about 5,000 with a view to intensify their work in a smaller area.

The two midwives attached to this Unit paid 102 visits to 21 villages in their jurisdiction. They paid 359 pre-labour, 86 after-labour and 37 miscellaneous visits, conducted 8 labours, and examined 2 samples of urine. They had 360 prenatals under their care.

Chlorination.—The routine work of chlorinating the drinking water wells in the Unit area was continued and 436 wells were thus chlorinated.

Stray Dogs.—During the quarter 146 stray dogs were destroyed as against 41 in the previous quarter. The details are given below :

<i>Village or Town.</i>	<i>Dogs destroyed.</i>
1. Mandya town	21
2. Maddur town	22
3. Somanahalli	39
4. Rudrakshipura	4
5. Nidagatta	24
6. Sundahalli	2
7. Induvala	8
8. Kalenahalli	7
9. Thoobinakere and Lingaraja Chatra	7
10. Halebudanur	6
11. Hosa Budanur	4
12. Kilara	2
Total	146

New Buildings.—Inspection of newly coming up dwelling houses in the Unit area was followed up by the Unit staff and suitable suggestions were made to the owners for erecting the houses on sanitary lines. In 12 villages 24 dwelling houses were being constructed without licenses and these were reported to the Revenue authorities for taking necessary action in the matter. During the quarter 22 house building license papers were forwarded to this office for opinion and they were disposed of with suitable suggestions.

Drainage.—In Halebudanur, V-shaped curb-stone drains were provided in three streets to a length of about 300 ft. the cost being met out of the Panchayet Funds.

Soak-pits.—In the following villages 13 soak-pits which were out of order were repaired thus preventing sullage stagnations.

Induvala	3
Sundahalli	2
B. Gowdigere	4
Kadalur	4
Hosalli	2

Attempts are being made to put up soak-pits in all the villages of the Unit area to avoid sullage stagnations of individual houses.

General Sanitation.—In the following villages 88 houses were got white-washed, 55 manure heaps were removed and covered with earth, 9 dilapidated structures were pulled down and levelled up, and 23 cart-loads of unsightly hedges and rank vegetations were got removed.

- | | |
|-----------------------|-------------------|
| 1. Channasandra. | 7. Yeliyur. |
| 2. Chennegowdandoddi. | 8. Mayannankoppa. |
| 3. Nidagatta. | 9. Induvala. |
| 4. Sommanahalli. | 10. Hanakere. |
| 5. Rudrakshipura. | 11. Halebudanur. |
| 6. Kallahalli. | |

During the quarter, the staff continued their visits to individual houses to note the defects and to bring the same to the notice of the owners offering suitable suggestions for improvements.

Spleen Survey.—The monthly spleen survey of Doddabadarahalli, Nodekoppa and Gejjalgere was conducted in the month of October. Further survey in these places was stopped as per instructions of the Superintendent, Bureau of Epidemiology, for the reason that the obser-

vations made in the previous years were quite adequate to study the difference in the incidence of malaria between the dry area (Nodekoppal and Byadarahalli) and the area covered by the Irwin canal (Gejjelgere).

Malaria.—Sporadic cases of malaria were reported from all the villages of the Unit area during the quarter. On examination most of them were found to be relapses with only a few fresh cases.

Malaria Control.—The special malaria control work started in ten villages of the Unit area was continued during the quarter.

The anti-malaria work in Mandya town was continued under the supervision of the Officer-in-charge of the Unit.

The three rural dispensaries in the villages of Hanakere, Keragode and Kothathi, started by the Medical Department, to afford relief to sufferers from malaria, were continued during the quarter.

Quinine Distribution.—The Unit staff continued distributing totaquina pills to the sufferers from malaria during their visits to the villages, and also left some quantity with the Patels, Chairmen of Village Panchayets, and the School Masters for emergency distribution to patients. The staff of malaria control unit helped in distributing the pills to the sufferers. A total of 13,139 pills (5 grs. each) were distributed to 788 adults and 309 children suffering from malaria and 9,361 pills were distributed to 1,034 adults and 425 children by the stockists out of 21,843 pills stocked with them. Thus, a total of 22,500 pills were distributed to 1,822 adults and 734 children.

Health Education.—The Unit staff did propaganda work as usual in the villages; they gave 3,312 talks on various health subjects to an audience of about 16,000. The system of pial talks to individual family groups was carried on by the staff as this was found more instructive to the villagers than resorting to mass gatherings.

Seventeen magic lantern lectures were given in 17 villages of the Unit area during the quarter to about 5,900 persons.

Under the auspices of the Red Cross Society, Mandya Branch, the Superintendent, Bureau of Epidemiology, addressed a gathering of about 1,000 people in November on "Anti-malarial measures in Java."

Vital Statistics.—The routine work of collection of vital statistics by the staff was continued during the

quarter. Out of 557 live-births, 275 deaths, 82 infant deaths, 10 maternal deaths and 19 still-births that occurred in the selected area, the Patels had registered 371 births (66·6 per cent), 203 deaths (73·8 per cent), 39 infant deaths (47·5 per cent), 7 maternal deaths (70 per cent) and 8 still births (42·1 per cent). Though there has been an appreciable improvement in the proper and prompt registration of vital occurrences by the Patels as a result of regular and systematic scrutiny by the Unit staff, much difficulty is still being experienced by the staff in not getting the registers from some of the Patels in time for verification. Such instances are being brought to the notice of the Revenue authorities for necessary action.

Laboratory.—Four samples of urine, 1 blood smear for M. P., 2 faecal samples for ova, and 3 sputum smears for T. B., were examined in the Unit laboratory; and four blood samples for W. R. were sent to the Public Health Institute, Bangalore, for examination.

Consultation.—During the quarter 119 patients visited the office for consultation and they were given necessary advice after examination.

Disposal of Health Papers.—Twenty-six papers were forwarded to this office from the Engineering and Revenue Departments for opinion regarding village reserve, cultivation, etc., during the quarter. Fifteen of them were inspected and disposed of with suitable remarks from the public health point of view.

Conference.—Six conferences of the Unit staff were held during the quarter at which the work of the staff was discussed.

BUREAU OF SANITARY ENGINEERING.

N. KRISHNIENGAR, B.E.,

Sanitary Engineer.

I. WATER SUPPLY.

The number of water-supply works undertaken during the quarter and the expenditure incurred on all items are furnished in the accompanying statement.

The following were the works completed during the quarter :—

1. Maigonahalli Water Supply.
2. Installation of a Power Plant at Hole-Narsipur.
3. Water Supply to Sri Ghati Subrahmanya Jatra from Bandihalla.
4. Water Supply to Nagamangala.
5. Water Supply to Karapur Camp.
6. Water Supply to Hoskote, Vokkaleri and Attibele.

The works under progress were at the following places :—

- | | |
|---------------------------------------|----------------|
| 1. Kolar. | 6. Harihar. |
| 2. Kengal Hanumantharayaswami Temple. | 7. Madhugiri. |
| 3. Tumkur Town. | 8. Kalkuniki. |
| 4. Krishnarajanagar. | 9. Hassan. |
| 5. Melkote Town. | 10. Saklespur. |

Estimates for water-supply projects for the following towns were prepared for submission :—

1. Honnali.
2. Sira.
3. Chitaldrug.
4. Improvements to water-supply of Shimoga and Chintamani.
5. Channarayapatna.

Four hundred and seventy samples of water were collected and examined for chemical contents, and for biological growths from malaria study stations at Nagenahalli and Mandya for experimental purposes.

Twenty-two samples were collected and tested for residual chlorine and 26 samples were collected and examined bacteriologically from Mathikere and Archarakarahalli of Closepet Health Training Centre in order to investigate the efficiency of periodical perchloron treatment of draw wells in the villages.

Three chemical samples and 10 bacteriological samples were collected and examined for potable purposes from Tumkur Town Water Supplies.

Statement showing the places where Water Works were under progress in various stages during the quarter October-December 1938.

No.	Name of work	Amount of estimate	Outlay during the quarter	Remarks
		Rs.	Rs.	
1	Installing a pumping set with electric motor for Shimoga town.	11,550	2,252	
2	Improving water supply to Malur town.	3,595	382	
3	Improving water supply to Konanur town.	...	520	
4	Laying 2½" C. I. Main in Kalakunika village.	3,600	944	
5	Constructing a settling tank at Harihar.	45,175	6,123	
6	Water-supply to Saklespur town.	29,125	7,104	
7	Laying 1½" G. I. sub-main, giving water connections to the area adjacent to the old exhibition building, Chamaraja Mohalla, Mysore.	2,952	1,946	
8	Laying sub-main in the main road between site Nos. 168, 177, 178, 172, No. 3, Vani Vilas Mohalla, Mysore.	410	467	
9	Providing a public fountain near electrical office at Jalapuri Extension, Lashkarmohalla, Mysore.	...	3,627	
10	Laying 1½" sub-main in Kethamarahalli village, Mysore.	...	901	
11	Deviating 4" and 5" C. I. main running in the premises of private building in Babu Rao's Road and Kantharaja Road, Mysore.	2,720	811	
12	Water supply to Hemagere Jatra.	2,045	3,019	
13	Water supply to Chunchunkatte Jatra.	7,222	1,199	

No.	Name of work	Amount of estimate	Outlay during the quarter	Remarks
		Rs.	Rs.	
14	Laying a sub-main in the main road along sites 25 to 26, 48 to 59 in Block 2, Vani Vilas Mohalla, Mysore.	...	7,644	
15	Giving water connection and tap to the Sewage Farm, Mysore.	...	434	
16	Fixing a hand rotary pump and providing a public tap for distributing system from elevated tank of Channarayapatna.	...	1,389	
17	Water-supply to Hiriyyur town.	14,530	4,402	
18	Laying 6" C. I. main and erecting a tank of 40,000 gallons for water-supply to Nanjangud town.	...	2,026	
19	Installing a pump to the well at Therakanambi.	...	183	
20	Testing the yield of the well at Suggenhalli.	...	659	
21	Bore-well at Antharsanthe.	...	222	
22	Do Bettadapura.	...	89	
23	Do Hudi Village.	...	300	
24	Do Jog Falls.	...	54	
25	Do Nuggehalli Village.	...	110	
26	Do Anekal	11	
27	Do Chennagiri.	...	167	
28	Do Thoranahalli.	...	35	
29	Do Alur	101	
30	Do Belagola	161	
31	Do Haranahalli.	...	6	
32	Do Arekere	218	
33	Do Tubigere	160	
34	Do Oorgaum Village.	...	86	
35	Laying 6" main, Nagamangala Water-supply.	11,690	3,503	Completed.

No.	Name of work	Amount of estimate	Outlay during the quarter	Remarks
		Rs.	Rs.	
36	Providing hydrants in the City Municipal office, Mysore.	...	204	
37	Water connections and laying 2" G. I. sub-main in 2nd Kathavadipura, Agrahar, Mysore.	...	528	
38	Providing water-supply to 84 model houses, Mysore.	6,514	1,757	
39	Testing the yield of the well at Nandi.	...	11	
40	Laying 2" G. I. sub-main with 4" C. I. main for water-supply to affected portion in Weavers' Line, Mysore.	...	32	
41	Laying 2" G. I. sub-main with 4" C. I. main for water-supply to affected portion in Jumma Masjid road, Lashkar mohalla, Mysore.	...	2,081	
42	Laying 2" G. I. sub-main with 4" C. I. main for water-supply to affected portion in Block No. 4, Lashkar mohalla; Mysore.	...	123	
43	Giving water connections to the bath room near Doddakere, Mysore.	...	160	
44	Providing a standby pipe, Peoples' Park, Mysore.	...	145	
45	Laying 16"×14" raising main near Railway Colony, Belagola road, Mysore.	...	1,474	
46	Shifting public fountain to old Agrahara Dispensary, Mysore	...	51	
47	Shifting fountain in front of Udipi Ananda Bhavan Hotel, Mysore.	...	32	
48	Water-supply to Melkote Jatra.	...	133	

No.	Name of work	Amount of estimate	Outlay during the quarter	Remarks
		Rs.	Rs.	
49	Laying underground sub-main 1" opposite to Jain Boarding House, Mysore.	...	70	
50	Laying galvanized 3" C. I. main in Yelaval Road, Mysore.	...	2,877	
51	Water-supply to Marikuppam Police Lines.	610	9	
52	Installing a standby pump at Lalithamahal.	...	208	
53	Water-supply to new Railway Offices, Mysore.	...	209	
54	Water-supply to Hassan town.	1,26,210	13,149	
55	Water-supply to Chaluvamba Maternity Hospital, Mysore.	...	102	
56	Giving water-supply to Lawn for Gardening purposes in front of Law Courts, Chamaraja Mohalla, Mysore.	...	112	
57	Giving water-supply to borehole latrines at Malleswaram tank, Bangalore.	...	240	
58	Additions and alterations in new Railway Workshop, Mysore.	...	152	
59	Laying 2½" C. I. pipe in place of 2" × 1½" × 1" G. I. pipe line in Kalkunike main road, water supply Kalakunike.	...	1,428	
60	Improving water-supply to Davangere town.	...	437	
61	Shifting the fountain and cattle trough at Robertsonpet.	...	89	
62	Extending 1½" sub-main in Block No. C., Vani Vilas Mohalla, Mysore.	...	2,266	
63	Providing water-supply to Gokulam Prince's Road, Mysore.	...	447	

No.	Name of work	Amount of estimate	Outlay during the quarter	Remarks
		Rs.	Rs.	
64	Improving water-supply to Chintamani town.	...	2,016	
65	Providing water tap in the cattle shed near Nanjaraja Bahadur Chattram, Mysore.	...	121	
66	Water-supply to Talkad village.	...	250	
67	Water-supply to Mudukatore.	...	1,632	
68	Giving water-supply for gardening purposes to Krishnaraja Boulevard, Chamaraja Mohalla, Mysore.	...	349	
69	Fixing meters in Mysore City.	25,000	692	
70	Improving water-supply to Mysore City.	4,835	1,011	
71	Water supply to Hunsur town.	...	388	
72	Water-supply to Hangala village.	1,147	1,241	
73	Constructing an experimental tank, Sowcarpet.	...	32	
74	Providing additional water-supply cattle trough to Chunchunkatte Jatra.	...	2,614	
75	Improving water-supply to Chikmagalur town.	...	101	
76	Laying 3" C. I. main pipe from storage tank outlet and connecting linking to the existing C. I. main in the North Road, Mysore.	...	94	
77	Installing a hand pump at T. B., Antharsanthe.	...	371	
78	Improving water-supply to Karapur.	...	2,766	
79	Fig Cultivation at Ganjam.	13,708	92	
80	Water-supply to Ganjam town.	...	1,143	
81	Do Hoskote town.	24,100	4,350	Completed.

No.	Name of work	Amount of estimate	Outlay during the quarter	Remarks
		Rs.	Rs.	
82	Water-supply to Kolar town.	...	254	
83	Do Chitaldrug town.	...	159	
84	Do Sri Cheluvamba Park, Mysore.	...	123	
85	Erecting a public fountain in Thalim Mutt, Kille-mohalla, Mysore.	...	102	
86	Providing a deep well pump for bore-well near Jail Building extension, Tumkur.	...	424	
87	Water-supply to Arsikere town.	...	103	
88	Water-supply to Mangalvarpet, Channapatna.	...	260	
89	Improving water-supply to Closepet.	...	536	
90	Formation of approach road to the pump house at Mandya.	...	616	
91	Water-supply to Shikarpur town.	...	1,678	
92	Testing the yield of the well at Chikballapur.	...	46	
93	Water connection to Sweepers' Quarters, Manantody Road, Mysore.	...	317	
	ANNUAL MAINTENANCE OF WATER-SUPPLY.			
1	A. M. of Vani Vilas Water Works, Mysore.	1,75,920	15,295	
2	A. M. of Kolar Gold Field Water Works, Bethamangala	82,500	21,199	
3	A. M. Road Watering in Mysore.	2,700	477	
4	A. M. Robertsonpet and Andersonpet, Kolar Gold Field.	28,700	7,687	
5	A. M. of Kolar Water Supply.	1,456	1,417	

No.	Name of work	Amount of estimate	Outlay during the quarter	Remarks
		Rs.	Rs.	
6	A. M. of Dodballapur Water Supply.	3,343	1,266	
7	A. M. of Closepet Water Supply.	2,644	808	
8	A. M. of Hoskote Water Supply.	1,600	167	
9	A. M. of Channapatna Water Supply.	4,725	1,352	
10	A. M. of Chikmagalur Water Supply.	2,652	3	
11	A. M. of Chintamani Water Supply.	...	25	
12	A. M. of Hole-Narsipur Water Supply.	4,124	2,065	
13	A. M. of Arkalgud Water Supply.	600	297	
14	A. M. of Kunigal Water Supply.	2,020	455	
15	A. M. of Mandya Water Supply.	3,000	644	
16	A. M. of Krishnarajanagar Water Supply.	2,493	2,046	
17	A. M. of Santhemarahalli Water Supply.	1,233	209	
18	A. M. of Krishnarajendra Water Supply, Shimoga.	23,997	596	
19	A. M. of Chitaldrug Water Supply.	2,807	751	
20	A. M. of Arsikere Water Supply.	3,610	1,395	
21	A. M. of Pump House at Woddarpalya, Mysore.	500	100	
22	A. M. Fig of Cultivation at Ganjam.	3,150	206	
23	A. M. of Saklespur ...	2,431	38	
24	A. M. of Nagamangala	133	
25	A. M. of Konanur ...	2,813	141	
26	A. M. of French-Rocks ...	1,912	31	
27	A. M. of Seringapatam ...	3,150	51	
28	A. M. of Hassan ...	5,030	507	

II DRAINAGE AND TOWN PLANNING.

(a) **Moffusil Drainage.**—1. Tumkur Drainage Works:—The construction of street drains were almost completed and the main drain works are in progress.

2. The drain works in the following places were also completed:—Nanjangud, Kolar, Goribidnur, Hassan, Anekal, Chintamani, Chikballapur, Sarjapur and Bannur.

Works in Closepet, Channapatna, Dodballapur, Kan-kanhalli, Jagalur and Pavagada are in progress.

(b) **Bangalore City Drainage.**—1. The construction of manholes in the areas of the old City portion, sanctioned was almost completed and the laying of pipe lines is just, undertaken.

2. Estimates aggregating to Rs. 5,42,600 for draining the areas of (1) Chikpet, (2) Sultanpet, (3) Fort and the blocks adjacent to the main drain and (4) for laying sub-main No. 9 on the east road of Basavangudi along Krumbiegel Road, were prepared and are with Government pending their sanction.

3. The sewage that was flowing in the open drain was diverted into the ovoid sewer and from its last man-hole it was connected to the open flood water drain in the Sunnakal Farm through the Septic Tank.

4. Estimates for the remaining areas of the City are being prepared for purposes of getting up the comprehensive scheme for draining the City. The scheme is expected to be ready early.

(c) **Town Extensions and Improvements.**—1. Plans for the improvement of junction of Bazaar Street in Closepet and the layout of Yesavanthapur Colony were prepared.

2. Layout of an extension for Byatrayapur, Bangalore taluk, was prepared.

3. Type designs for slaughterhouses and mutton stalls and dwelling houses with rat-proof arrangements for the use of poor classes were prepared.

4. Estimates for works to control malaria in Hiriyur town were prepared.

5. The constructions of five units of dwelling houses for Adikarnatakas in Chitaldrug are almost completed.

Drainage and Town Planning Works.

	<i>Estimate.</i>	<i>Outlay.</i>
	Rs.	Rs.
1. Constructing drain in Jagalur Town ...	13,000	924
2. Do Bannur ...	1,873	448
3. Do Chamarajanagar ...	5,055	68
4. Do Dodballapur 2nd stage ...	6,250	2,581
5. Do Hassan ...	17,000	4,041
6. Do Nanjangud ...	8,015	3,979
7. Do Sarjapur ...	1,625	260
8. Do Tumkur ...	1,54,000	38,253
9. Constructing one of the chambers of the septic tank near Kempambhudi tank, Bangalore.	2,000	375
10. Constructing main sewers and outfall, Bangalore.	3,60,000	13,818
11. Leading off sewage from the present terminal of ovoid sewer at Bangalore.	17,600	2,532
12. Laying underground sewer in Gavipur Extension, Bangalore.	8,550	5,703
13. Laying street sewer near Old Mental Hospital, Bangalore.	5,900	2,114
14. Hiriyur drainage experimental malarial survey	43
15. Laying street sewer No. 5 submain, Bangalore.	93,000	19,110
16. Laying street sewer Link road area, Bangalore.	14,800	1831
17. Laying street sewer in 7 sub-main, Bangalore.	93,900	12,068
18. Laying submain No. 6 between Cubbonpet and Narasimharaja road, Bangalore.	88,340	7,369
10. Laying remaining street sewers Nos. 1 and 2, Bangalore.	60,420	43,636
20. Leading off the effluent from the Septic tank built for Railway Colony, Mysore.	3,760	757
21. Constructing dwelling houses for Adikarnataka Colony at Chitaldrug.	...	813
22. Survey charges of Bangalore City	531
23. Do Belur (Hassan District)	9
24. Do Bettadapura	23
25. Do Maddur (Mysore District)	12
26. Do Sarjapur (Bangalore District.)	8
27. Do Sakrepatna (Channarayana patna taluk.)	22

III. SANITARY FITTINGS AND INSTALLATIONS.

The progress on these works, both under original and annual maintenance works, is noted in the accompanying statement.

Sanitary Fittings and Installations.

	<i>Estimate.</i>	<i>Outlay.</i>
	Rs.	Rs.
1. Providing sanitary fittings and drainage arrangements to P.K.T. Sanatorium, Mysore.	...	784
2. Providing flushing arrangements to Government Boys' Middle School, Lakshmipuram, Mysore.	...	415
3. Providing flushing arrangements with drainage arrangements, Chamarajendra Hospital, Hassan.	7,730	2,132
4. Shifting sanitary fittings from rear verandah to main bath-room of 1st and 2nd class waiting room at Railway Station, Mysore.	...	2,483
5. Providing lavatory in the Audit Assistant's room in the Chief Electrical Engineer's Office, Bangalore.	..	153
6. Providing sanitary fittings and water closets to the Rural Welfare Centre, Closepet.	...	1,735
7. Providing sanitary fittings of converting Muslim Co-operative building into Nurses' Quarters, Mysore.	1,600	239
8. Providing a sink and water connections in the new kitchen at Krishnarajendra Hospital at Mysore.	...	156
9. Providing sanitary fittings to Technological Institute, Bangalore.	...	593
10. Providing sanitary fittings to Cheluvamba Maternity Hospital, Mysore.	11,865	817
11. Providing sanitary fittings to Lalithamahal, Mysore.	...	271
12. Erecting a standby pump and motor at Gate Lodge, Lalithamahal, Mysore.	...	9
13. Repairing sanitary fittings in Krishnarajendra Hospital, Mysore.	...	73
14. Providing sanitary fittings with drainage arrangements to Krishnaraja Mohalla Police Station, Mysore.	...	327
15. Providing sanitary fittings to new special Ward in Krishnarajendra Hospital, Mysore.	1,700	412
16. Providing a bath room at Central College, House, Bangalore.	...	266
17. Converting lamp room into lavatory with automatic flushing arrangements at the North of Mysore Railway Station Yard, 3rd Class passengers, Mysore.	2,358	1,726
18. Providing sanitary fittings to the extension of Pathological Laboratory, Victoria Hospital, Bangalore.	772	263

	<i>Estimate. Outlay.</i>	
	Rs.	Rs.
19. Providing sanitary fittings and drainage arrangements in the Central College, Central Block, Bangalore.	...	603
20. Providing sanitary fittings and drainage arrangements to Nurses' Quarters, Mysore.	...	76
21. Providing sanitary fittings to the Exhibition Building, European Refreshment Room, Mysore.	...	153
22. Providing sanitary fittings to Anatomy Block, Mysore.	...	61
23. Providing sanitary fittings to New Mental Hospital, Bangalore.	803	77
24. Connecting the existing sewer of Out-patient Dispensary, Victoria Hospital Bangalore.	...	471
25. Constructing incubating room in Public Health Institute, Bangalore.	945	374
26. Borehole latrines at Malleswaram tank block.	125	240
27. Constructing flushing latrine at Thulasithotam, Bangalore.	1,668	1,852

ANNUAL MAINTENANCE OF SANITARY FITTINGS.

	Rs.	Rs.
1. A. M. of Seshadri Memorial Hall, Bangalore	225	68
2. ,, Victoria Hospital, Bangalore	... 480	208
3. ,, Carlton House ,,	... 330	100
4. ,, Public Offices ,,	... 898	382
5. ,, Ophthalmic Hospital ,,	... 695	56
6. ,, Vani Vilas Hospital ,,	... 176	40
7. ,, Woddarpalya Pumping Station, Mysore	550	36
8. ,, Life Insurance Office, Bangalore	... 138	30
9. ,, Medical College, Mysore	... 250	15
10. ,, Lalithamahal, Mysore	... 380	20

IV. Bore-wells.

During the quarter 5 bore wells including the two that had been started in the previous quarter were completed.

V. Bore-holes.

The number of bore-holes drilled during the quarter was 140 for the jatra ground at Talkad, T.-Narsipur taluk.

PART II.

BUREAU OF VITAL STATISTICS.*

(Central Statistical Office).

E. R. SUNDARARAJAN, M.A. (Hons.),

Superintendent.

(a) General.

Under Section 20 of the Mysore Registration of Births and Deaths Act, III of 1918, Government were pleased to issue, in Notification No. G. 5400—P.H. 73-37-7, dated December 1, 1938, revised rules for the working of the said Act in the rural areas of Bangalore and Shimoga Districts. The following amendments were issued by Government under Section 20 of the Act in their Notification No. G. 8572—P.H. 28-38-6, dated March 4, 1939.

Rule 1.—Add at the end of the existing note “and the Assistant Registrar—General means the Superintendent of the Bureau of Vital Statistics for the time being.”

Rule 2.—Between the words “over his signature” and sent to the Amildar” add “or that of the Assistant Registrar-General.”

In the Districts of Bangalore and Shimoga the new system of registration and compilation of births, deaths and marriages has worked now for over a year, it may safely be stated, with success. Birth and death certificates are being issued by the Registrar-General of Births Deaths and Marriages in respect of rural areas also from December 1, 1938, as per Government Order No. G. 5400—P.H. 73-37-7, dated December 1, 1938.

Outside of these two districts the new system of registration of marriages has been adopted in the municipalities noted below in addition to those previously reported.

No.	G. O. No.	Date	Area
1.	No. L. 3140-1 Ml. 139-37-52	October 20, 1938	Chamarajnagar town.
2.	No. L. 2788-9 Ml. 139-37-5	„ 8, 1938	Madbugiri town.
3.	No. L. 5956-57 Ml. 114-38-9	January 24, 1939	Saklespur town.
4.	No. L. 6074-75 Ml. 114-38-10	„ 30, 1939	Gubbi town.

* Office of the Registrar-General of Births, Deaths and Marriages in Mysore, Bangalore.

(b) Registration Area.

The percentage of returns received from the villages is detailed below from January 1 to December 31, 1938.

Percentage of Returns Received.

Month	Births		Deaths		Marriages	
	Shimoga District	Bangalore District	Shimoga District	Bangalore District	Shimoga District	Bangalore District
January, 1938	86.2	82.3	86.6	82.1	45.5	55.0
February, "	88.9	80.8	89.1	81.1	57.0	61.6
March, "	86.9	80.8	86.8	79.9	54.5	65.8
April, "	87.0	77.8	87.8	78.1	58.7	67.6
May, "	85.5	79.6	85.9	78.7	62.2	69.9
June, "	86.1	78.7	85.6	78.1	60.2	65.1
July, "	84.3	74.4	86.2	74.9	69.4	62.9
August, "	86.0	79.2	84.7	80.3	70.8	67.7
September, "	85.6	75.2	85.3	75.2	71.6	64.2
October, "	85.8	75.8	85.6	75.8	72.7	66.9
November, "	84.2	71.1	84.7	70.5	75.9	64.2
December, "	88.2	71.8	87.6	72.5	81.0	57.6

Statistics for the Registration Area are given in Tables 1 to 6. Tables 7 and 8 give the statistics of the previous quarter in respect of the Non-registration Area also.

Births, Still-births and Infant Mortality.

During the quarter 12,734 live-births were recorded, giving a birth-rate of 26.0 per mille of population, as compared with 27.4 in the previous quarter. The computed rates are given in the accompanying statement.

Area	Population as on July 1, 1938	Births			
		Born alive	Born Dead	Plural Births	Birth Rate
1	2	3	4	5	6
Bangalore District ...	9,96,415	5,072	144	32	20.4
Municipalities ...	79,271	539	14	4	27.2
Rural Area ...	9,17,144	4,533	130	28	19.8
Shimoga District ...	5,40,238	3,240	136	22	24.0
Municipalities ...	66,278	609	35	8	36.8
Rural Area ...	4,73,960	2,631	101	14	22.2
Cities ...	4,19,546	4,412	218	46	42.1
Bangalore City ...	2,12,080	1,968	125	20*	37.1
Mysore City ...	1,24,265	1,461	51	11	47.0
Kolar Gold Field	83,201	983	42	15	47.8
Total ...	19,56,199	12,734	498	100	26.0

Area	Infants		Maternal Mortality			Deaths All causes	
	Infant Deaths	Infant Mortality Rate	No. of Parturition cases	Maternal Deaths	Maternal Mortality Rate	Deaths	Death Rate
7	8	9	10	11	12	13	14
Bangalore District ...	417	82.0	5,184	44	8.4	2,992	12.0
Municipalities ...	28	51.9	549	5	9.0	258	13.0
Rural Area ...	388	85.6	4,635	39	8.4	2,741	12.0
Shimoga District ...	463	142.9	3,354	112	33.2	2,861	21.2
Municipalities ...	58	95.2	636	14	21.7	368	22.2
Rural Area ...	405	153.9	2,718	98	35.9	2,493	21.0
Cities ...	699	158.4	4,583	25	5.4	2,901	27.7
Bangalore City...	360	182.9	2,072	7	3.3	1,475	27.8
Mysore City ...	181	123.9	1,501	15	9.9	880	28.3
Kolar Gold Field	158	160.7	1,010	3	2.9	546	26.2
Total ...	1,578	123.9	13,096	181	13.7	8,761	17.9

* One set quadruplets.

The number of sets of plural births reported during the quarter was 100, as against 123 in the preceding quarter, all of them being twins except one single set of quadruplets. The frequency of twin births is thus 0.75 per cent and that of quadruplets 0.008 per cent.

Still-births registered during the quarter numbered 498 giving a percentage of 3.9 per 100 live-births, against 3.5 in the preceding quarter.

Parturition cases accounted for by the births were 13,096 among whom 181 died of child-birth. The computed maternal mortality was 13.7 per 1,000 births as compared with 11.7 in the previous quarter. Kolar Gold Field registered the lowest rate of 2.9 and the highest rate of 35.9 was reported from the rural area of Shimoga District.

Deaths.

In the Registration Area 8,761 deaths were reported excluding still-births. This gives a death-rate of 17.9 per 1,000 estimated population as against the same rate in the previous quarter. The low rates for Bangalore District as compared with the comparatively high rates for Shimoga District may be noted. Variations in the reported causes of death are noted below for each city, urban and rural area.

Area and Cause of Death

1	Bangalore District		Shimoga District	
	Urban	Rural	Urban	Rural
2	3	4	5	
Estimate population as on July 1, 1938 ...	79,271	9,17,144	66,278	4,73,960
Total Deaths ...	258	2,741	368	2,493
Plague ...	6	171	...	20
Small-pox	11	2	15
Cholera	28	...	33
Malaria ...	5	797	19	1,044
Typhoid ...	3	138	9	206
Other Fevers ...	65	294	122	275
Dysentery and Diarrhoea ...	13	190	25	171
Respiratory Diseases ...	8	102	4	181
Consumption ...	26	208	7	59
Leprosy	19	3	21
Child-birth ...	5	39	14	98
Suicide ...	1	9	3	3
Drowning	47	1	11
Wounds and Accidents ...	2	31	3	18
Killed by Wild Beasts	1	...	3
Snake-bite	6	1	7
Rabies	1
All Other Causes ...	124	655	155	327

	Bangalore	Mysore	K. G. F.	Total	Rate per 100,000 of population
	City	City	City		
	6	7	8	9	10
Estimate population as on July 1, 1938.	2,12,080	1,24,265	83,201	19,56,199	
Total Deaths ...	1,475	880	546	8,761	1,791
Plague ...	6	29	...	232	47
Small-pox	1	29	6
Cholera	61	12
Malaria ...	10	33	8	1,916	392
Typhoid ...	34	33	5	428	87
Other Fevers ...	171	89	105	1,121	229
Dysentery and Diarrhoea ...	151	79	57	686	140
Respiratory Diseases ...	44	20	33	392	80
Consumption ...	75	59	8	437	89
Leprosy ...	1	44	9
Child-birth ...	7	15	3	181	37
Suicide ...	2	1	2	21	4
Drowning ...	4	...	4	67	14
Wounds and Accidents ...	5	6	16	81	17
Killed by Wild beasts	4	1
Snake-bite	14	3
Rabies	1	0.2
All Other Causes ...	965	516	304	3,046	623

Marriages.

The number of marriages reported in each month in the municipal and rural areas were 8,704 for a population of 18,72,998, as detailed below.

It will be seen that, although a few marriages were celebrated throughout the year, the two months of maximum incidence in rural as well as urban and city areas are May and June.

Area	Popula- tion as on July 1, 1938	Number of Marriages reported					
		January	February	March	April	May	June
1	2	3	4	5	6	7	8
BANGALORE DISTRICT.							
Municipalities ...	79,271	5	11	29	32	100	113
Rural Area ...	9,17,144	22	48	256	487	1,768	1,422
SHIMOGA DISTRICT.							
Municipalities ...	66,278	6	17	13	24	152	109
Rural Area ...	4,73,960	14	51	74	106	1,290	896
CITIES.							
Bangalore City ...	2,12,080	0	12	41	63	134	170
Mysore City ...	1,24,265	11	21	38	40	124	221
Total ...	18,72,998	58	160	451	752	3,568	2,931

Area	Number of Marriages reported						Total
	July	August	September	October	November	December	
	9	10	11	12	13	14	15
BANGALORE DISTRICT.							
Municipalities ...	5	15	9	7	4	9	339
Rural Area ...	37	143	39	45	46	29	4,342
SHIMOGA DISTRICT.							
Municipalities ...	4	11	7	10	5	11	369
Rural Area ...	64	54	24	28	18	47	2,661
CITIES.							
Bangalore City ...	19	7	18	4	4	5	477
Mysore City ...	14	7	11	8	7	14	516
Total ...	143	237	108	102	79	115	8,704

(c) **Non-Registration Area.**

(Statistics for Quarter, July—September 1938.)

In view of the fact that centralisation of compilations has been effected in only a part of the State it is necessary to combine more or less acceptable figures for the two districts with the known unreliable data of the remaining six districts. Not only this. Whilst figures for the current quarter are available for the two districts only, the figures of the previous quarter only will be available in respect of the other six districts. The compiled figures for the State as a whole are thus of doubtful value. It is

therefore necessary to introduce the new system in the remaining six districts also at a very early date.

Compiled statistics for the quarter July-September 1938, including those of the Registration Area also, are given below :

	July-Sept. 1938.	April-June 1938.	July-Sept. 1937.
Births (excluding still-births) ...	37,922	36,634	38,433
Still-births ...	790	582	568
Deaths—all causes (excluding still-births). ...	25,761	21,111	22,836
Plague ...	1,605	291	1,500
Small-pox ...	232	186	196
Cholera ...	180	143	307
Malaria ...	7,476	7,089	6,989
Typhoid ...	1,296	1,237	1,131
Other Fevers ...	3,525	2,504	2,553
Dysentery and Diarrhœa ...	2,232	1,334	1,585
Respiratory Diseases ...	871	1,247	1,029
Consumption ...	1,210	1,090	1,271
Leprosy ...	217	210	205
Child-birth ...	577	555	564
Suicide ...	64	77	60
Wounds and Accidents ...	165	197	168
Drowning ...	226	230	211
Killed by Wild Beasts ...	12	16	27
Snake-bite ...	35	55	43
Rabies ...	13	14	15
All Other Causes ...	5,825	4,636	4,982

Births, Still-births, Infant Deaths.—During the quarter 37,922 live-births were registered giving a birth-rate of 22·2 per mille of population as compared with 21·4 in the previous quarter. The rate was highest (24·8) in Chitaldrug District and lowest (15·5) in Kadur District. Bangalore City reported a rate of 35·9, Mysore City 43·2 and Kolar Gold Field 46·9.

A total of 790 still-births were reported being 2·1 per cent of the total live-births reported as against 1·6 per cent in the previous quarter. This percentage varied from 0·7 in Tumkur and Mysore Districts to 4·3 in Kadur District. In cities these percentages were: Bangalore City 6·9, Mysore City 4·3, and Kolar Gold Field 4·8.

During the quarter 4,377 infants under one year of age died, giving an infant mortality rate of 115·4 against 89·8 in the preceding quarter. This rate was highest (134·0) in Kadur District and lowest (74·4) in Bangalore District. The Cities reported rates of 231·1 in Bangalore City, 151·4 in Mysore and 166·2 in Kolar Gold Field.

Attacks and Deaths from Plague, Small-pox and Cholera in the Districts and Cities during the quarter, October-December 1938.

District or City	Plague		Number of Places affected	Population affected	Small-pox		Number of Places affected	Population affected	Cholera		Number of Places affected	Population affected
	A.	D.			A.	D.			A.	D.		
Bangalore (Excluding City)	30	10	3	2,289
Chitaldrug	1	...	1	379	20	10	1	831
Hassan	117	67	26	37,079	8	1	3	1,387
Kadur	121	66	8	37,069	...	1	1	464
Kolar (Excluding K. G. F.)	210	126	39	96,718	8	...	2	620
Mysore (Excluding City)	131	83	28	41,896
Shimoga	12	6	2	849	5	1	1	650
Tumkur	1	1	1	451
Mysore State (Excluding Cities)	622	358	107	1,56,279	42	14	9	4,403
Bangalore City	7	6	1	2,12,080
Mysore City	33	29	1	1,24,265
Kolar Gold Field	1	1	1	83,201	2	1	1	83,201
Mysore State (Including Cities) ...	663	394	110	5,75,825	44	15	10	87,604

Deaths.

A total of 25,761 deaths, excluding still-births, were reported during the quarter. The computed death-rate for the quarter was 15·1 against 12·3 in the preceding quarter. The death-rate was highest (18·7) in Shimoga District and lowest (11·2) in Tumkur District. The City rates were: Bangalore City 30·6, Mysore City 28·6 and Kolar Gold Field 31·2.

(d) Epidemic Diseases.

Plague.—The prevalence of plague was low in the quarter under report and it was more or less the same as in the previous quarter. A total of 663 attacks with 394 deaths were reported in 110 places. The District which was affected most was Kolar, and Tumkur District was entirely free. Bangalore City reported six deaths, Mysore City 29 and Kolar Gold Field one.

Small-pox.—There was practically no small-pox in the quarter under report. Forty-four attacks with 15 deaths were reported in 10 places. Bangalore City and Mysore City were free and Kolar Gold Field reported a single death from this cause.

Cholera.—The State was free from Cholera in the quarter under report.

(e) Parturition Cases.

Parturition cases conducted in the 32 maternity hospitals and female dispensaries in different parts of the State are given in the following statement. It will be seen that among 3,454 labour cases conducted, 206 were abortions and 52 died. Of infants born 3,048 were live-births and 289 still-births. The computed maternal mortality was 15·6 per 1,000 births.

Parturition Cases Conducted in Maternity Hospitals and Female Dispensaries.

No	Place	Institution	Total Number of Labour cases conducted	Abortions or miscarriages	Number of Maternal Deaths	Number of births recorded		
						Live-births	Still-births	Number of pairs of twins
1	Bangalore City	Vani Vilas Hospital	1,306	11	13	1,219	104	17
2	Mysore City	Do	666	48	10	595	30	6
3	Do	Holdsworth Memorial Hospital	172	17	5	145	11	3
4	Kolar Gold Field	Maternity Hospital	387	30	3	362	17	5
5	Anekal	Female Dispensary	2	...	Not	2
6	Channapatna	Do	...	Report	Not	Received.
7	Chikballapur	Do	3	2	Not	1
8	Chikmagalur	Maternity Hospital	3	Report	Not	Received.
9	Chintamani	Female Dispensary	45	1	2	1	10	...
10	Chitaldrug	Do	147	7	...	85	16	2
11	Davangere	Maternity Hospital and Female Disp.	72	10	1	126	8	2
12	Dodballapur	Female Dispensary and Maternity Hospital.	22	2	Not	18	2	...
13	Hassan	Female Dispensary and Maternity Hosp.	4	Report	Not	Received.
14	Do	R. F. Memorial Hospital	54	12	3	4
15	Hebbal	Female Dispensary	6	1	...	35	1	...
16	Hole-Narsipur	S. N. Maternity Hospital	37	9	...	5	5	...
17	Hunsur	Female Dispensary	30	5	...	23	5	...
18	Kolar	Do	59	1	...	20	6	1
19	Do	E. T. O. Memorial Hospital	6	5	2	2
20	Koppa	Female Dispensary	2	1	...	53	7	...
21	Krishnarajuar	Female Dispensary and Maternity Hosp.	10	3	...	1	...	1
22	Mudgere	Combined Dispensary	50	7	1	43	2	2
23	Mandagadde	Maternity Hospital	4	2	...	1	3	...
24	Nanjangud	Female Dispensary	15	3	...	9	4	1
25	Sagar	Do	70	14	...	49	10	3
26	Saklespur	Women and Children Hospital	51	6	3	73	5	1
27	Shimoga	Maternity Hospital	84	8	3	47	10	3
28	Sira	Female Dispensary	36	3	2	73	10	1
29	Tarikere	Do	18	8	3	30	6	...
30	Tiptur	Maternity Hospital	93	8	2	18	3	1
31	Tirahalli	Do	...	8	4	69	17	1
32	Tumkur	Do
Total (Mysore State)			8,454	206	52	3,048	289	48

LIBRARY

TABLE 1.
Detailed statistics of births collected under the new system in the Division of the Cities of Bangalore and Mysore in the quarter, October to December 1938.

Cities	Births		Permanent residence of mother		Community of mother											
	Born alive		Born dead	Place of Birth	Outside	Lingayat	Vokkaligar	Vaisya	Kshatriya	Brahmin	Adikarnataka	Mussalman	Jain	Christian	European	Others
	M	F														
BANGALORE CITY.																
I Division	39	35	74	73	...	7	4	1	10	17	15	23
II "	45	44	89	92	...	2	4	16	10	4	4	49
III "	65	52	117	119	...	5	4	10	6	30	6	50
IV "	32	27	59	60	4	...	8	...	7	43
V "	9	18	27	28	...	2	5	12
VI "	53	57	110	110	...	4	7	1	19	18	26	33
VII "	38	41	79	103	...	3	9	1	21	15	9	37
VIII "	63	52	115	72	...	8	1	...	56	...	2	16
IX "	538	546	1,144	1,231	...	9	1	...	47	...	8	84
Vaui Vilas Hospital	22	26	48	45	...	2	33	58	234	30	124	545
Maternity Hospital	3	...	2	3	5	16	18
Total	1,017	951	1,968	2,049	23	59	143	63	106	422	208	6	82	...	860	
MYSORE CITY.																
Lashkar	120	98	218	219	...	14	19	7	8	33	58	3	4	...	62	
Mandi	78	72	150	152	...	3	1	1	5	16	61	...	1	...	66	
Devaraja	27	26	53	52	...	9	7	2	3	15	
Chamaraja	86	72	158	151	...	43	51	83	4	25	
Krishnaraja	44	25	69	74	...	2	1	...	8	...	6	17	
Fort	11	6	17	17	1	1	
Nazrabad	22	28	50	50	...	5	1	
Palace Dispensary	4	6	10	10	...	1	2	...	6	25	
Vaui Vilas Hospital	308	279	587	610	...	64	16	...	2	1	5	2	
Sawar and Barr	5	8	13	7	12	190	72	...	18	...	161	
Lines.	1	...	4	...	1	...	2	
Holdsworth Memorial Hospital.	66	75	141	139	...	17	2	...	2	8	37	...	16	1	41	
Total	771	690	1,461	1,481	20	63	163	47	89	339	355	3	40	1	417	

TABLE 1—*concl'd.*
Detailed statistics of births collected under the new system in the Division of the cities of Bangalore and Mysore in the quarter October to December 1938.

Cities	Age of Mother										Total (All ages)	Order of birth									
	Below 15	15-20	20-25	25-30	30-35	35-40	40-45	45 and over	Not stated	1		2	3	4	5	6	7	8	9	10	Over 10
BANGALORE CITY.																					
I Division	...	16	21	23	6	4	3	73	9	14	8	18	8	4	1	5	1	2	...
II "	...	17	34	22	11	7	1	92	9	11	4	14	7	4	...	3	...	4	...
III "	...	28	42	30	13	6	119	22	19	6	20	6	6	...	8	...	4	...
IV "	...	1	14	19	6	1	60	14	11	...	8	7	3	1	...
V "	...	1	6	10	2	1	28	7	10	...	3	4	1	...
VI "	...	1	31	39	10	4	112	17	16	...	14	11	1	...
VII "	...	2	22	23	20	4	104	15	20	...	13	14	1	...
VIII "	15	24	17	9	87	13	18	...	9	10	1	...
IX "	...	1	30	31	12	8	116	16	19	...	16	12	2	...
Vani Vilas Hospital.	...	4	390	332	167	61	1,283	292	161	...	116	87	4	...
Maternity Home	...	14	17	10	5	1	48	10	7	...	6	3	2	...
Total	10	465	650	541	269	106	26	3	3	2,072	420	296	227	223	155	96	77	70	39	47	62
MYSORE CITY.																					
Lashkar	2	50	63	46	32	19	4	3	3	219	40	32	24	24	14	14	13	8	9	5	...
Mandi	1	29	53	35	20	12	3	153	23	32	21	12	13	5	7	5	3	3	...
Devaraja	...	9	12	11	14	7	53	7	6	8	18	1	4	2	6	1	1	...
Chamaraja	...	44	46	43	17	5	2	157	35	22	19	23	8	9	5	5	1
Krishnaraja	...	20	21	16	10	7	74	16	15	10	12	1	2	3	2
Fort	...	7	5	4	1	17	8	...	5
Nazarbad	...	13	20	10	3	4	50	13	8	7	4	2	2	1
Palace Dispensary	...	3	...	3	2	2	10	3	2	2
Vani Vilas Hospital...	2	118	184	166	99	35	6	1	...	611	129	105	73	61	32	27	21	14	16	22	...
Sawar and Barr Lines	...	1	2	3	1	1	8	2	1	3	1
Holdsworth Memorial Hospital.	1	47	44	27	15	11	3	1	...	149	40	18	19	18	8	8	5	2	1	3	...
Total	6	341	450	364	214	103	18	5	3	1,501	311	241	191	168	81	72	57	42	36	34	...

TABLE 1 (a).
Detailed Statistics of Births collected under the new system in the Division of Kolar Gold Fields
in the quarter October to December 1938.

Name of District	Births			Permanent residence of Mother		Community of Mother										
	Born alive		Born dead	At Village	Outside	Lingayat	Vokkaligar	Vaisya	Kshatriya	Brahmin	Adikarnataka	Mussalman	Jain	Christian	European	Others
	M.	F.														
Robertsonpet	31	48	79	3	79	...	1	2	2	7	7	20	7	5	...	28
Andersonpet	35	31	66	...	65	...	2	1	1	2	15	12	...	9	...	23
Champion Reefs	62	67	129	1	128	91	4	...	25	2	6
Nandidrug Mines	48	57	105	7	108	62	4	...	7	...	35
Oorguam do	41	37	78	2	79	1	53	3	...	10	...	12
Mysore do	102	82	184	5	185	3	117	2	...	48	2	19
Nandidrug Balaghat Section	6	4	10	...	10	4	1	...	3	...	2
Electrical Department	...	2	2	...	2	2
Maternity Hospital	162	168	330	24	351	...	3	1	4	6	180	22	...	72	...	63
Total	487	496	983	42	1,007	3	6	4	7	16	529	68	7	179	4	190

TABLE 1 (a)—*concl.*

Name of District	Age of mother										Order of birth											
	Below 1	15-20	20-25	25-30	30-35	35-40	40-45	45 and over	Not stated	Total All ages	1	2	3	4	5	6	7	8	9	10	Over 10	Not stated
	Robertsonpet	15	19	20	13	9	2	1	...	79	17	14	11	9	8	4	6	1	2	4	8
Andersonpet	16	24	15	5	5	65	12	14	11	6	8	3	4	2	2	2	3
Champion Reefs	...	16	31	36	24	17	2	...	2	21	15	26	15	15	9	5	7	8	2	2	5	...
Nandidrug Mines	...	14	33	35	11	12	2	1	...	108	19	22	13	16	10	11	11	2	3	1
Oorguam do	13	31	16	8	11	79	19	11	20	4	4	5	3	1	10	1	1
Mysore do ...	4	35	63	41	30	13	2	...	188	85	40	29	23	20	9	15	7	2	2	4	4	...
Nandidrug Balaghat Section Electrical Depart- ment.	5	...	3	2	10	...	4	1	...	1	3	1
Maternity Hospi- tal.	...	12	132	143	45	12	1	...	6	89	57	55	54	29	18	20	5	14	4	4	6	...
Total ...	4	121	339	306	140	81	9	2	8	1,610	213	177	167	127	95	62	26	41	19	19

TABLE 2.
Detailed statistics of deaths collected under the new system in each Division of the cities of Bangalore and Mysore in the quarter October to December 1938.

	Deaths		Permanent residence of the deceased		Conjugal condition at time of death				Community												
	M	F	Total	At Village	Outside	Single	Married	Widowed	Divorced	Not stated	In ayet	Vokkaligar	Vaisya	Kshatriya	Brahmin	Adikarna-taka.	Musalman	Jain	Christian	European	Others
BANGALORE CITY.																					
I Division	60	88	98	98	...	85	26	16	1	...	1	11	...	4	11	22	18	...	2	...	29
II do	82	90	172	171	1	62	22	0	61	27	4	6	...	5	15	7	16	...	1	...	110
III do	113	118	231	231	...	125	68	35	1	2	9	2	...	10	17	28	41	...	3	...	112
IV do	60	56	116	118	3	57	26	31	1	1	4	3	...	2	8	...	5	87
V do	32	23	55	64	1	27	14	12	1	1	2	5	...	1	17	...	11	...	1	...	25
VI do	49	80	129	127	2	63	98	28	...	4	2	3	...	7	28	...	29	...	4	...	46
VII do	57	63	120	120	...	72	23	18	1	...	4	5	...	6	40	...	10	...	3	...	51
VIII do	29	34	63	75	6	32	19	12	1	5	31	...	5	13
IX do	59	47	106	106	...	59	25	22	6	6	...	4	21	...	18	47
Vani Vilas Hospital	86	93	179	175	4	160	19	...	55	89	6	13	...	2	21	...	19	...	5	...	108
Victoria Hospital	111	86	147	118	29	1	2	...	1	1	1	123
E. D. Hospital	8	2	10	10	...	2	6	1	1	3	...	2	8
Mental Hospital	5	9	14	14	...	3	6	2	1	8
St. Martha's Hospital	12	23	35	25	10	7	19	5	...	4	1	...	11	...	14
Total	763	712	1,475	1,419	56	725	315	182	123	130	33	60	45	41	191	89	185	5	35	10	781
MYSORE CITY.																					
ashkar Mohalla	79	74	153	152	1	78	53	22	4	11	9	7	10	15	54	1	9	...	33
andy do	62	71	133	124	9	60	51	22	4	1	1	2	13	57	...	8	...	52
Devaraj do	20	24	44	44	...	21	14	9	1	7	...	3	15	...	1	14
amaraj do	52	70	122	120	2	60	36	26	2	19	...	1	31	34	6	...	1	...	28
Krishnaraj Mohalla	41	61	102	102	...	34	40	28	4	10	...	1	16	1	9	...	1	...	60
Furt do	17	12	29	29	...	12	11	6	4	1	...	1	15	...	1	7
Nazarbad	22	24	46	45	1	23	12	11	1	11	...	1	1	2	7	...	2	...	20
Vani Vilas Hospital	17	24	41	41	...	29	12	11	1	5	...	1	15	2	2	...	1	...	14
Krishnarajendra Hos- pital	97	42	139	119	20	47	60	...	26	6	1	...	13	...	5	...	120
Epidemic Hospital	15	8	23	20	3	4	6	...	6	7	1	...	1	...	1	...	3	...	3	...	15
P. K. T. Sanatorium	1	3	4	3	1	...	4	3
Sawar and Barr. Lines	1	2	3	3	...	3	1	1	1
Holdsworth's Memorial Hospital.	7	34	41	26	15	22	14	4	1	...	4	1	4	1	11	1	6	...	13
Total	431	449	880	828	52	838	313	128	33	13	22	69	14	17	111	68	165	2	31	1	380

TABLE 2—contd.

	Age at death											Total all ages			
	Under 1 week	1 week to 1 month	1 month to 6 months	6 months to 1 year	Total under one year of age	1-5 years	5-10	10-15	15-20	20-30	30-40		40-50	50-60	60 and over
BANGALORE CITY.															
I Division	4	5	15	4	28	20	7	1	3	7	13	3	3	20	98
do	6	4	13	10	38	32	9	3	8	9	13	15	12	42	172
do	9	12	8	8	37	67	6	6	10	23	12	10	6	54	281
do	4	4	9	3	20	26	6	3	...	10	2	9	8	32	116
do	...	3	4	5	12	13	...	2	...	2	3	6	5	10	55
do	8	3	8	8	27	23	3	3	2	13	7	8	10	33	129
do	11	5	6	4	26	32	7	2	1	7	5	6	7	27	120
do	2	3	3	7	15	7	5	4	1	8	4	3	2	19	63
do	9	6	5	5	26	24	6	5	1	10	1	4	2	28	106
Vani Vilas Hospital	66	46	12	10	134	22	8	...	2	11	6	1	179
Victoria Hospital	3	4	10	8	7	31	30	25	15	14	147
E. D. Hospital	3	2	...	3	2	10
Mental Hospital	4	4	...	1	2	14
St. Martha's Hospital	1	...	2	...	4	3	4	...	18	35
Total	119	91	83	67	360	271	58	39	40	137	98	97	74	301	1,475
MYSORE CITY.															
Lashkar Mohalla	9	5	19	12	45	17	6	5	6	16	5	6	10	37	183
do	3	4	9	6	24	15	3	6	11	15	12	6	9	32	133
do	2	2	5	2	11	5	...	2	3	5	6	3	3	6	44
Devaraj do	9	5	4	7	25	18	10	4	5	8	7	9	7	84	122
Chamaraj do	2	5	3	4	9	9	7	4	4	11	12	8	9	28	102
Krishnaraj do	2	...	3	4	9	9	2	5	4	11	12	1	5	7	29
Fort do	1	...	1	...	2	5	2	1	1	2	3	1	2	9	46
Nazarabad	2	4	8	...	13	7	1	2	1	5	6	...	2	9	41
Vani Vilas Hospital	24	5	1	...	30	4	4	3	41
Krishnarajendra Hospital	1	1	4	5	11	10	9	5	12	18	34	21	10	9	139
Epidemic Hospital	2	...	4	4	6	2	2	3	23
P. K. T. Sanatorium	3	1	...	4
Sawar and Barr. Lines	1	1	2	3
Holdsworth's Memorial Hospital.	3	3	2	2	10	9	2	...	4	9	4	...	1	1	41
Total	57	29	51	44	181	92	42	30	55	100	98	57	59	166	880

TABLE 2—concl'd.

	Causes of death													All other causes				
	Plague	Small-pox	Cholera	Malaria	Typhoid	Other fevers	Dysentery and Diarrhoea	Respiratory diseases	Consumption	Leprosy	Child-birth	Suicide	Drowning		Wounds & accidents	Killed by Wild beasts	Snake-bite	Rabies
BANGALORE CITY.																		
I Division	2	..	10	12	..	4	42
II do	3	..	17	28	2	20	2	100
III do	1	..	28	24	8	12	158
IV do	14	8	6	2	86
V do	3	4	2	2	44
VI do	2	21	13	11	15	..	3	..	1	66
VII do	1	2	13	13	3	6	79
VIII do	5	7	6	3	2	88
IX do	1	3	7	21	3	1	..	1	..	1	67
Vani Vilas Hospital	1	1	8	5	12	2	3	145
Victoria Hospital	1	11	38	5	2	5	..	3	8	82
E. D. Hospital	1	2	1	..	3	2
Mental Hospital	6	1	7
St. Martha's Hospital	3	6	3	1	1	21
Total	6	10	34	171	151	44	75	1	7	2	4	5	965
MYSORE CITY.																		
Lashkar Mohalla	3	8	14	24	2	6	..	1	1	94
Mandy do	3	4	7	11	8	2	10	..	1	3	89
Devaraj do	1	2	2	2	4	..	7	..	1	25
Chamaraj do	10	8	3	10	7	1	9	..	1	75
Krishnaraj Mohalla	8	8	3	9	5	2	10	..	2	55
Fort do	1	1	..	3	3	1	2	18
Nazarbad do	1	16	1	28
Vani Vilas Hospital	3	1	32
Krishnarajendra Hospital	7	9	28	7	9	4	6	2	73
Epidemic Hospital	6	1	2	5	..	4	5
P. K. T. Sanatorium	4
Sowar and Barr Lines	1	4	2
Holdsworth's Memorial Hospital	3	6	4	2	3	..	3	20
Total	29	33	33	89	79	20	59	6	15	1	6	6	516

Table 2 (a).
Detailed Statistics of Deaths collected under the new system in each Division of Kolar Gold Fields in the quarter October to December 1938.

Name of District	Serial No.		Sex	Permanent residence		Conjugal Condition at time of death				Community													
	M	F		Total	At villages	Outside	Single	Married	Widowed	Divorced	Not stated	Timgayet	Vokkaligar	Vaisya	Kshatriya	Brahmin	Adikarnataka	Mussalman	Jain	Christian	European	Others	
Robertsonpet	44	33	77	77	...	45	32	4	1	26	1	4	...	28		
Andersonpet	23	39	62	62	...	36	12	13	1	3	1	9	9	...	13	...	23		
Mysoore Mines	37	38	75	75	...	53	11	11	12	...	7		
Champion Reefs	39	33	72	72	...	47	18	7	7	8	9	...	4		
Oorgaum Mines	27	25	62	62	...	44	8	10	3	...	11	...	3		
Nandidrug Mines	32	28	60	60	...	37	15	9	1	...	12	...	10		
Nandidrug Mines Balghat Section.	4	3	7	7	...	4	2	1	1	...	2		
K. G. F. Electrical Department.		
Maternity Hospital	12	17	29	29	...	21	8	2	...	9	...	3		
Civil Hospital	15	14	29	25	4	10	7	...	2	2	...	8	1	18		
Mining Hospital	40	3	43	14	29	11	26	5	1	4	1	5	1	16		
E. D. Hospital	11	6	17	17	...	7	7	1	...	2	1	...	2	...	14		
Office of the Chief Inspector of Mines.	13	...	13	13	...	1	9	3	1	...	12		
Total	307	239	546	513	83	316	156	56	11	7	...	2	4	4	1	246	56	5	58	2	188		

TABLE 2 (a)—*contd.*

Name of District	Age at death										Total	1-5 years	Age at death						60 and over	Not stated	Total of all ages
	Under 1 week	1 week to 1 month	1 month to 6 months	6 months to 1 year	5-10	10-15	15-20	20-30	30-40	40-50			50-60								
KOLAR GOLD FIELD.																					
Robertsonpet ...	2	2	6	8	18	15	1	4	4	1	4	4	1	4	4	4	22	...	77		
Andersonpet ...	2	3	9	2	16	10	1	3	4	2	4	4	2	3	3	3	19	...	62		
Mysore Mines ...	10	4	9	6	29	18	2	2	2	2	2	2	2	...	1	1	17	...	76		
Champion Reefs ...	8	3	7	11	29	11	3	...	4	2	...	4	2	2	5	16	...	72			
Oorgaum Mines ...	3	4	6	5	18	24	1	...	1	...	1	...	4	2	...	12	...	62			
Nandidrug Mines ...	4	6	8	5	23	12	1	1	5	2	1	5	2	1	2	13	...	60			
Nandidrug Mines Balghat Section.	1	1	8	1	...	1	1	...	7			
K. G. F. Electrical Department.			
Maternity Hospital ...	22	1	23	4	2	...	4	2	29			
Civil Hospital	Nil	5	2	3	9	3	3	9	3	4	1	1	...	29			
Mining Hospital	1	1	1	1	2	12	6	2	12	6	9	6	5	...	43			
E. D. Hospital	Nil	1	1	...	3	3	...	3	3	5	3	1	...	17			
Office of the Chief Inspector of Mines.	Nil	2	9	...	2	9	2	13			
Total ...	51	24	45	88	165	100	13	8	16	49	37	82	26	107	...	546					

TABLE 2 (a)—*concl.*

Name of District	Causes of death														Total				
	Plague	Small-pox	Cholera	Malaria	Typhoid	Other Fevers	Dysentery and Diarrhoea	Respiratory Diseases	Consumption	Leprosy	Child-birth	Suicide	Drowning	Wounds and accidents		Killed by wild beasts	Snake-bite	Rabies	All other causes
KOLAR GOLD FIELD.																			
Robertsonpet	1	..	8	3	11	2	52	..
Andersonpet	7	5	4	1	46	..
Mysore Mines	2	..	13	9	5	1	1	..	1	43	..
Champion Reefs	1	..	21	13	2	24	1
Oorgaum Mines	3	..	12	12	4	1	30	..
Nandidrug Mines	14	8	4	34	..
Nandidrug Mines Balghat Section	1	2	4	..
K. G. F. Electrical Department
Maternity Hospital
Civil Hospital	1	8	3	2	3	26	..
Mining Hospital	1	1	21	..	1	3	5	11	..
E. D. Hospital	..	1	3	..	2	..	2	9	..
Office of the Chief Inspector of Mines.	3	10
Total	1	1	..	8	5	105	57	33	8	..	3	2	4	16	303	1

Printed and Published by the Government of Mysore at the Mysore Press, Mysore.

TABLE 3.—Detailed statistics of births collected under the new system in the Municipalities of Bangalore and Shimoga Districts in the quarter October to December 1938.

	Births			Permanent residence		Community										
	Born alive		Born dead	At village	Outside	Lingayat	Vokkaligar	Vaiyas	Kshatry	Brahmin	Adikarnataka	Musulman	Jain	Christian	European	Others
	M.	F.														
BANGALORE DISTRICT.																
1. Anekal	16	12	28	28	2	1	1	1	8	2	..	7	..	2	..	12
2. Channapatna	28	38	66	65	1	..	3	1	2	5	..	33	19
3. Closepet	41	34	75	74	1	..	3	10	..	35	22
4. Devanhalli	19	18	37	37	6	..	7	16
5. Doddballapur	32	20	52	50	2	3	..	6	..	1	..	37
6. Hoskote	17	25	42	41	1	1	3	..	10	26
7. Kankanhalli	18	19	37	34	4	7	..	6	..	1	..	17
8. Magadi	26	28	54	43	10	..	3	..	1	9	..	8	24
9. Nelamangala	18	16	34	34	1	7	..	5	10
10. Sarjapur	11	4	15	15	2	10
11. Tyamagondlu	13	21	34	37	4	..	9	8
12. Vadigenahalli	15	19	34	29	7	3	..	7	..	1	..	15
13. Yelahanka	15	16	31	31	4	..	3	17
Total	269	270	539	518	31	20	36	21	9	65	22	138	..	5	..	283
SHIMOGA DISTRICT.																
1. Bhadravati	47	35	82	85	3	2	3	5	9	..	5	..	61
2. Channagiri	17	19	36	35	1	4	2	..	2	13	18
3. Honnali	23	24	47	48	3	2	1	6	..	10	32
4. Kumsi	8	6	13	13	2	..	4	6
5. Hosanagar	4	2	6	6	2	..	2	2
6. Nyamatbi	14	25	39	38	1	17	1	3	3	15
7. Sagar	26	23	49	49	1	..	6	1	7	..	8	..	35
8. Shikarpur	8	19	27	32	..	9	10	9
9. Shimoga	117	124	241	187	63	10	4	8	19	64	6	52	1	10	..	76
10. Shiralkoppa	16	5	21	20	3	4	2	1	1	6	8
11. Sorab	13	7	20	20	..	4	3	..	6	8
12. Tirthahally	9	19	28	31	1	1	..	15	1	2	..	3	..	8
Total	302	307	609	564	72	52	5	10	24	102	17	124	3	21	..	278

TABLE 3—*concl'd.*

	Age of mother										Order of birth												
	Below 15	15-20	20-25	25-30	30-35	35-40	40-45	45 and over	Not stated	Total of all ages	1	2	3	4	5	6	7	8	9	10	Over 10	Not stated	
BANGALORE DISTRICT.																							
Anekal	...	7	10	4	3	3	1	5	2	8	2	1	3	3	3	2	7	2	2
Channapatna	...	11	8	19	8	12	3	19	3	6	8	6	7	2	2	2	2
Closepel	...	15	27	5	13	5	6	10	22	8	10	10	7	4	2	2	5	5	2
Devanballi	...	12	10	3	9	3	87	10	1	3	3	3	2	2	2	1	1	2
Deballapur	...	1	11	23	6	1	56	9	12	6	6	4	...	3	3	1	1	1
Hoskote	...	11	14	8	4	4	...	1	...	42	9	6	3	3	2	2	3	3	1	1	1
Kankanballi	6	15	9	1	...	1	...	38	3	7	3	5	6	2	5	1
Magadi	...	8	16	14	8	6	54	8	7	7	1	8	7	4	2
Nelamangala	...	7	9	12	5	...	1	11	4	5	7	2	2	2	2	3	1	2	1
Sarjapur	...	3	5	4	1	3	2	4	4	7	1	2	3	1	1
Tyamagondlu	...	7	8	6	10	5	15	8	5	2	4	3	2	3	1	1
Vadigenahalli	13	6	4	2	37	5	8	2	2	1	...	6	2	1	8	1
Yelahanka	...	9	9	9	3	...	1	16	2	6	3	...	6	...	1	2
Total	1	120	164	113	80	44	15	2	10	549	83	74	54	49	34	38	25	20	9	14	32	...	
SHIMOGA DISTRICT.																							
Bhadravati	...	9	35	25	11	4	1	22	13	18	14	5	5	3	2	2	2	1
Channagiri	...	14	15	4	3	1	10	5	9	3	3	2	1	1	1	1
Honnali	...	10	22	8	6	5	9	12	9	5	5	3	2	2	2	1	...	8
Kumsi	...	4	3	2	2	2	3	2	4	...	2	...	1
Hosanagar	4	2	6	1
Nyamathi	...	12	9	8	6	3	1	11	6	5	2	6	2	2	3	3	2
Sagar	...	10	19	13	7	12	10	10	4	4	1	6	2	2
Shikarpur	...	8	9	9	4	1	8	2	9	2	4	5	...	1	1
Shimoga	...	1	59	58	32	14	3	60	39	33	31	32	12	15	5	9	4	10	
Shirakoppa	...	1	8	4	2	2	9	4	1	3	3	1	...	1	1
Sorab	2	4	4	2	5	4	2	3	3	1	...	1
Tirtahally	...	5	10	6	5	5	3	7	6	2	3	2	2	2	2	2
Total	2	141	219	147	82	39	5	...	1	611	106	108	68	70	34	83	20	19	8	15	3	...	

TABLE 4—concl'd.

Name of District	Causes of death														Total					
	Plague	Small-pox	Cholera	Malaria	Typhoid	Other fevers	Dysentery and Diarrhoea	Respiratory diseases	Consumption	Leprosy	Child-birth	Suicide	Drowning	Wounds and Accidents		Killed by wild beasts	Snake-bite	Rabies	All other causes	Not Stated
BANGALORE DISTRICT.																				
Anekal	1	4	2	4	2	...	1	12	...	25
Channapatna	1	8	6	...	6	...	2	19	...	88
Closetpet	1	...	11	2	20	2	88
Devanhalli	3	1	...	2	6	...	13
Dodballapur	3	1	...	3	6	1	12
Hoskote	8	...	5	5	...	1	2	...	13
Kankanhalli	2	1	...	3	1	8	1	19
Magadi	2	2	...	1	1	10	2	16
Nelamangala	3	2	1	7	...	12
Sarjapur	2	6	1	6	...	14
Tyamagondlu	1	7	1	...	1	4	...	20
Vadigenahalli	6	2	...	1	8	...	20
Yelahanka	1	...	6	1	7	4	21
Total	6	2	...	5	8	65	13	8	26	...	5	1	...	2	114	10	258	
SHIMOGA DISTRICT.																				
Bhadravati	1	...	33	5	1	9	...	49
Channagiri	1	1	3	10	4	18
Honnali	1	1	7	6	...	2	1	10	1	27
Kumsi	2	...	5	...	1	2	11
Hosanagar	1	1	2	3	...	7
Nyamathi	4	...	9	4	...	18
Sagar	2	...	9	4	1	...	1	16	1	35
Shikarpur	1	2	...	1	3	...	1	7	...	18
Shimoga	6	2	34	10	1	3	...	4	70	...	132
Shirahoppa	...	2	...	1	1	1	1	1	1	...	1	8	...	17
Sorab	1	1	12	1	7	...	21
Tirthahalli	1	1	5	1	...	2	5	...	15
Total	...	2	...	19	9	122	25	4	7	3	14	3	1	8	...	1	149	6	368	

TABLE 5.

Detailed statistics of births collected under the new system in the Taluks of Bangalore and Shimoga Districts in the quarter October to December 1938.

Name of District	Births			Permanent residence of Mother		Community of mother										
	Born alive		Born dead	Place of birth		Lingayet	Vokkaligar	Vaiya	Kshatriya	Brahmin	Adikarnataka	Mussalman	Jain	Christian	European	Others
	M	F		Total	Outside											
BANGALORE DISTRICT.																
Anekal	139	161	3	259	43	10	30	8	91	12	1	1	...	149
Bangalore	355	300	17	540	128	13	139	...	12	12	147	25	1	309
Channapatna	219	253	21	346	142	9	245	...	11	11	83	10	1	125
Closepet	241	216	7	306	155	50	209	...	2	2	54	16	1	127
Devanhalli	140	145	9	253	40	1	99	...	1	10	64	2	1	114
Dodballapur	145	171	10	267	57	27	90	...	2	22	54	12	119
Hoskote	178	177	17	311	58	15	64	...	7	7	67	48	165
Kankanhalli	341	313	15	482	181	40	289	...	3	8	87	17	214
Magadi	293	223	18	435	96	60	207	...	1	15	66	28	152
Nelamangala	258	265	13	431	104	51	150	12	123	21	174
Total	2,309	2,224	130	3,630	1,005	276	1,522	6	13	107	836	191	8	28	...	1,648
SHIMOGA DISTRICT.																
Channagiri	275	269	11	479	72	203	3	8	42	51	244
Honnali	245	224	10	424	53	157	2	2	43	18	252
Kumsi	53	45	3	87	14	26	3	5	12	8	50
Hosnagar	91	83	10	186	47	16	2	28	11	3	120
Sagar	104	109	10	155	68	18	11	48	12	6	127
Shikarpur	177	136	11	281	41	92	8	2	12	14	192
Shimoga	151	132	10	248	45	85	5	9	32	22	139
Sorab	160	150	23	274	56	46	11	18	25	11	218
Tirthahalli	120	107	13	158	80	3	17	32	16	6	159
Total	1,376	1,255	101	2,242	476	641	58	2	7	152	205	139	6	7	...	1,501

TABLE 5—concl'd.

Name of District	Age of mother								Order of birth								Not stated				
	Below 15	15-20	20-25	25-30	30-35	35-40	40-45	45 and over	Not stated	1	2	3	4	5	6	7		8	9	10	Over 10
BANGALORE DISTRICT.																					
Anekal	1	43	88	90	41	32	7	55	59	59	36	37	26	16	4	3	4	3	3
Bangalore	2	129	181	170	95	59	26	120	147	127	91	68	44	23	23	8	8	8	5
Chennapatna	4	78	136	137	53	53	20	90	105	84	63	63	85	18	14	2	2	1	12
Closepet	1	73	114	134	79	44	13	83	64	80	77	59	40	25	13	13	3	4	...
Devanhalli	1	33	79	79	63	25	8	46	57	64	47	26	16	11	12	6	1	...	7
Dodballapur	1	58	85	98	46	26	13	73	66	51	42	36	27	12	12	3	1
Hoskote	2	63	87	97	77	24	14	79	58	45	45	29	28	15	10	13	5	8	...
Kankanhalli	3	105	181	170	116	73	13	127	140	118	81	71	56	32	21	6	7	4	...
Magadi	1	94	139	150	95	38	12	100	101	89	80	66	42	18	17	9	4	5	...
Nelamangala	1	97	144	148	80	52	8	108	82	112	87	49	35	17	17	11	10	5	2
Total	17	773	1,294	1,968	745	426	133	31	8	881	900	842	649	504	349	187	143	74	46	34	26
SHIMOGA DISTRICT.																					
Channagiri	2	113	156	131	85	46	14	1	3	126	105	90	70	56	36	20	26	8	5	4	4
Honnali	2	66	154	127	85	35	5	3	...	102	98	87	49	38	34	24	12	7	5	6	15
Kumsi	1	17	38	21	17	10	1	21	18	17	9	13	12	6	3	2
Hosnagar	1	28	68	50	29	6	61	35	36	24	14	6	2	...	1	2
Sagar	1	52	63	60	29	16	54	45	40	25	23	14	9	...	3	2
Shikarpur	...	56	95	82	53	32	2	79	59	52	46	24	19	8	8	2	2	6	17
Shimoga	1	64	94	72	40	19	1	77	57	57	38	20	13	14	10	1	1	3	7
Sorab	...	65	90	90	55	24	5	91	61	59	42	30	17	6	9	4	3	8	8
Tirthahalli	...	40	72	76	32	15	2	1	...	66	61	35	37	9	15	6	2	4	1
Total	8	501	825	709	425	203	32	8	7	667	539	473	335	227	166	95	76	32	21	23	54

TABLE 6.
Detailed Statistics of Deaths collected under the new system in the Taluks of Bangalore and Shimoga Districts in the quarter October to December 1938.

Name of District	Deaths		Permanent residence of the deceased		Conjugal condition at time of death				Community												
	M	F	Total	At village		Single	Married	Widowed	Divorced	Lingayet	Vokkaligar	Vatsya	Kshatriya	Brahmin	Adikarna-taka	Mussalman	Jain	Christian	European	Others	
				Outside	At village																
BANGALORE DISTRICT.																					
Anekal	87	98	185	168	17	61	109	9	6	6	13	1	...	5	40	4	116	
Bangalore	192	198	390	340	50	125	121	26	18	14	87	9	74	12	183	
Chennapatna	140	131	271	213	58	102	152	10	7	9	132	4	43	2	76	
Closepet	121	143	264	198	66	122	134	5	3	20	135	5	30	10	62	
Devanbhalli	103	109	212	197	15	71	108	18	15	20	84	5	31	3	69	
Dodballapur	102	82	184	161	23	69	92	11	12	12	40	6	32	2	92	
Hoskote	101	104	205	192	13	68	112	22	13	8	52	4	28	17	84	
Kankanhalli	207	180	387	306	81	146	213	7	21	18	170	2	41	11	141	
Magadi	176	180	356	303	53	142	184	13	17	36	128	10	46	9	125	
Nelamangala	132	155	287	259	28	121	155	6	4	25	77	6	64	10	103	
Total	1361	1380	2741	2337	404	1027	1481	117	116	168	918	56	439	80	1051	
SHIMOGA DISTRICT.																					
Channagiri	176	185	361	359	2	190	153	16	2	141	1	5	27	32	153	
Honnali	187	152	339	333	6	196	129	12	1	89	4	28	16	198	
Kumsi	33	35	68	68	...	41	19	8	...	15	10	12	29	
Hosnagar	106	93	199	196	3	84	105	11	...	18	1	16	23	2	135	
Sagar	122	121	243	241	2	95	132	15	...	19	16	36	13	3	139	
Shikarpar	183	183	366	354	2	148	195	17	...	148	7	5	17	31	156	
Shimoga	131	108	239	236	3	92	134	11	...	70	2	9	18	22	117	
Sorab	929	199	428	427	1	180	231	14	...	80	13	10	43	17	265	
Tirthahalli	124	126	250	249	1	90	140	20	...	3	11	35	20	7	172	
Total	1291	1202	2493	2473	20	1113	1238	124	3	583	51	9	199	142	1354	

TABLE 6—contd.

Name of District	Age at death											Total of all ages				
	Under 1 week	1 week to 1 month	1 month to 6 months	6 months to 1 year	Total under 1 year of age	1-6 years	5-10	10-15	15-20	20-30	30-40		40-50	50-60	60 and over	Not stated
BANGALORE DISTRICT.																
Anekal	5	2	3	2	12	6	19	17	6	17	21	29	17	41	...	185
Bangalore	20	18	8	6	52	17	19	10	17	30	32	41	31	122	...	390
Chennapatna	38	8	8	2	51	8	4	8	8	20	29	23	22	78	...	271
Closepet	24	10	13	6	53	10	19	12	10	18	17	20	18	68	...	264
Devanhalli	7	5	2	3	17	6	9	14	6	17	22	13	26	66	2	212
Dodballapur	8	4	7	9	28	5	5	4	5	17	13	22	13	53	...	184
Hoskote	14	...	5	5	24	2	10	8	2	20	16	9	15	77	...	205
Kankanhalli	18	13	8	8	47	16	18	21	16	31	39	41	25	101	...	387
Magadi	20	13	14	10	57	11	16	11	11	21	34	23	27	106	...	356
Nelamangala	15	12	11	9	47	15	13	13	15	21	20	30	14	81	1	287
Total	164	85	79	60	388	301	182	113	96	212	243	251	207	733	5	2741
SHIMOGA DISTRICT.																
Channagiri	18	10	29	22	79	67	15	9	15	34	45	20	20	56	1	361
Honnali	15	12	22	15	64	87	13	7	3	34	41	27	11	48	4	339
Kumsi	12	4	4	3	23	9	3	...	2	7	5	2	3	14	...	68
Nagar	7	9	5	2	23	10	6	9	9	40	27	24	20	29	2	199
Sagar	10	4	7	8	23	29	5	5	10	28	33	35	25	42	2	243
Shikarpur	26	7	11	10	54	40	12	14	17	57	50	40	44	88	...	366
Shimoga	18	8	3	6	35	23	7	8	6	30	35	25	26	42	2	239
Sorab	27	11	18	12	68	42	13	11	17	45	69	48	45	61	8	428
Tirthahalli	17	6	4	2	29	13	7	6	10	47	32	35	35	34	2	250
Total	150	71	104	80	405	320	81	69	89	322	337	256	229	364	21	2493

TABLE 6—concl'd.

Name of District	Causes of death																	
	Plague	Smallpox	Cholera	Malaria	Typhoid	Other fevers	Dysentery and Diarrhoea	Respiratory diseases	Consumption	Leprosy	Child-birth	Suicide	Drowning	Wounds and accidents	Killed by wild beasts	Snake-bite	Rabies	All other causes
BANGALORE DISTRICT.																		
Anekal	53	31	3	19	5	11	14	...	5	...	1	2	...	41
Bangalore	19	...	1	106	15	53	19	19	20	4	5	2	10	2	...	1	...	115
Chennaspatna	2	74	13	28	21	12	22	1	3	2	6	4	...	1	...	82
Closepet	1	76	8	35	19	9	27	3	4	...	7	2	...	1	...	64
Devanahalli	70	1	...	42	4	8	16	11	11	1	3	...	2	3	...	1	...	40
Dodballapur	1	...	2	59	11	31	5	4	14	7	1	...	1	...	47
Hoskote	2	...	3	59	14	25	18	7	19	2	6	1	2	2	...	1	...	45
Kabkanhalli	...	7	1	164	36	27	27	11	21	4	6	2	2	8	71
Magadi	...	3	14	112	20	24	43	11	29	2	3	2	6	6	80
Nelamangala	16	...	4	74	15	44	17	7	26	2	4	...	5	3	70
Total	171	11	28	797	188	294	190	102	203	19	39	9	47	31	1	6	...	655
SHIMOGA DISTRICT.																		
Channagiri	...	8	8	151	22	31	22	31	7	8	13	2	3	4	...	1	...	50
Honnali	...	3	3	135	30	43	24	28	1	1	7	...	1	4	...	3	...	56
Kumsi	...	1	1	17	2	9	...	7	1	1	4	25
Nagar	4	116	21	9	6	5	6	3	11	1	3	1	13
Sagar	121	19	22	32	19	7	1	8	1	13
Shikarpur	1	156	23	49	11	22	12	1	15	2	18
Shimoga	...	3	3	89	21	28	10	22	9	5	6	...	1	2	...	1	...	54
Sorab	6	155	40	63	36	37	10	1	16	...	2	2	...	1	...	35
Tirthahalli	7	104	28	21	30	30	6	...	18	...	1	1	58
Total	20	15	33	1044	206	275	171	181	59	21	98	3	11	18	3	7	1	327

TABLE 7.

Reported number of births, deaths and infant deaths in the districts and cities of the Mysore State in the quarter July-September 1938.

District or City	Estimated population as on 1st July 1938	Births (Exclusive of Still-births)			Deaths (Exclusive of Still-births)				Deaths under one year of age				Still-births								
		July	August	Sept.	Total	Rate per 1000 of Population	July	August	Sept.	Total	Rate per 1000 live-births	July	August	Sept.	Total	Rate per 100 live-births					
																	Rate per 1000 of Population	Rate per 1000 live-births	Rate per 100 live-births		
Bangalore District (Excluding City).	9,96,415	1,889	1,913	2,097	5,899	23.7	916	1,073	1,075	3,064	12.3	138	156	145	439	74.4	35	51	27	113	1.9
Chitaldrug District ...	7,17,394	1,548	1,390	1,503	4,441	24.8	717	804	800	2,321	12.9	154	177	205	536	120.7	21	32	17	70	1.6
Hassan do ...	6,06,519	926	739	771	2,436	16.1	862	954	1,010	2,826	18.6	95	107	100	302	124.0	18	19	24	61	2.5
Kadur do ...	3,58,178	474	460	454	1,388	15.5	485	495	571	1,551	17.3	53	66	67	186	134.0	14	24	22	60	4.3
Kolar do	8,07,695	1,573	1,471	1,622	4,666	23.1	1,005	951	994	2,950	14.6	184	194	167	545	116.8	13	22	12	47	1.0
(Excluding K. G. F.).																					
Mysore District (Excluding City).	14,66,454	2,259	1,988	2,139	6,386	17.4	1,427	1,481	1,871	4,779	18.0	170	171	224	565	88.5	13	19	14	46	0.7
Shimoga District ...	5,40,238	1,205	1,104	973	3,282	24.3	808	836	879	2,523	18.7	144	146	145	435	132.5	42	35	45	122	3.7
Tumkur do ...	9,26,583	1,890	1,596	1,718	5,204	22.5	811	844	930	2,585	11.2	172	187	205	564	108.4	10	20	5	35	0.7
Mysore State (Excluding Cities).	64,19,476	11,764	10,661	11,277	33,702	21.0	7,031	7,438	8,130	22,599	14.1	1,110	1204	1258	3,572	106.0	166	222	166	554	1.6
Bangalore City ...	2,12,080	653	604	647	1,904	35.9	491	537	536	1,624	30.6	119	169	152	440	231.1	41	52	39	132	6.9
Mysore do ...	1,24,265	527	438	376	1,341	43.2	290	273	325	888	28.6	64	68	71	203	151.4	12	22	23	57	4.3
Kolar Gold Field ...	63,201	334	315	326	975	46.9	221	223	206	650	31.2	56	55	51	162	166.2	20	12	15	47	4.8
Mysore State (Including Cities).	68,39,022	13,278	12,018	12,626	37,922	22.2	8,033	8,531	9,197	25,761	15.1	1,349	1496	1532	4,377	115.4	239	308	243	790	2.1

TABLE 8.

Reported deaths in the districts and cities of the Mysore State in the quarter July-September 1938, classified according to the chief causes of death.

District	Plague	Small-pox	Cholera	Malaria	Typhoid	Other fevers	Dysentery and Diarrhoea	Respiratory diseases	Consumption	Leprosy	Child-birth	Suicide	Drowning	Wounds and accidents	Killed by wild beasts	Snake-bite	Rabies	All other causes	Total deaths	
																			July-Sept. 1938	April-June 1938
Bangalore District (Excluding City).	314	16	32	772	141	336	200	96	230	21	52	8	54	33	..	7	5	747	3,064	2,331
Chitaldrug District	..	36	13	804	135	350	208	108	100	23	48	9	32	24	1	8	..	420	2,321	2,031
Hassan do	227	35	39	1,060	98	579	201	78	76	12	62	4	10	14	3	3	..	323	2,826	2,240
Kadur do	47	17	1	714	70	207	99	75	26	16	54	2	5	5	213	1,551	1,306
Kolar do	256	13	2	900	157	458	137	98	139	41	65	7	48	13	2	9	3	607	2,950	2,328
(Excluding K. G. F.).																				
Mysore District (Excluding City).	712	61	42	1,513	261	469	415	216	203	55	88	12	30	25	3	3	2	669	4,779	3,929
Shimoga District	2	27	41	831	224	384	285	125	70	16	81	5	11	13	..	3	1	454	2,523	1,994
Tumkur District	9	22	7	837	163	875	201	71	189	32	103	8	30	21	3	1	..	513	2,585	2,407
Mysore State (Excluding Cities).	1,563	227	177	7,431	1,249	3,153	1,696	867	1,033	216	553	55	220	148	12	34	13	3,946	22,539	18,566
Bangalore City	1	5	3	7	23	184	288	..	75	1	16	4	3	4	..	1	..	1,009	1,624	1,247
Mysore City	26	24	15	77	106	4	81	..	6	3	..	1	545	886	742
Kolar Gold Field	9	14	9	111	142	..	21	..	2	2	3	12	325	650	556
Mysore State (Including Cities)	1,605	232	180	7,476	1,296	3,525	2,232	871	1,210	217	577	64	226	165	12	35	13	5,925	25,761	21,111

Preserve your Health and Live Long

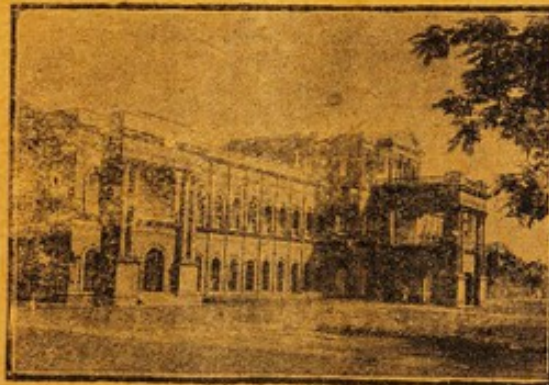
But do not forget to Ensure
Happiness and Comfort for your Old Age
By Taking out a Policy Immediately

WITH

THE MYSORE GOVT. LIFE INSURANCE DEPARTMENT

PUBLIC BRANCH.

THE BEST
INSTITUTION
FOR A
MYSOREAN
TO INSURE
HIS LIFE.



EVERY POLICY
IS
GUARANTEED
BY THE
STATE
REVENUES
OF
MYSORE.

Mysore Govt. Life Insurance Department, Bangalore.

Bonus last Declared, Rs. 20 per thousand per annum.

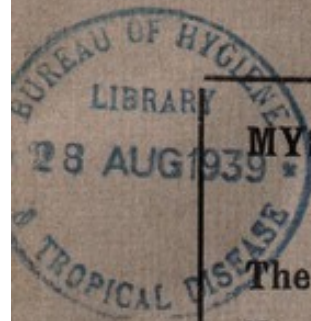
Next Bonus Year 1938.

For particulars, please apply to—

THE SECRETARY,
MYSORE GOVT. LIFE INSURANCE DEPARTMENT,
BANGALORE.







1286-K4105

MYSORE STATE DEPARTMENT OF PUBLIC HEALTH

The following Bulletins are published by Government :—

- No. 1. **Report on a Health Survey of Mysore—**
By W. C. SWEET, B.Sc., M.D., D.P.H., Consultant in Health in Mysore, Bangalore, 1928.
- No. 2.* **Report on Tuberculosis in Mysore State—**
By P. S. CHANDRASEKHAR, M.D., Sometime Officer-in-charge of Tuberculosis Survey in Mysore, 1928.
- No. 3.* **Report on a Sanitary Survey of the City of Bangalore for the Year 1927—**
By MOHAMED USMAN, L.M.S., Retired Senior Surgeon and Sanitary Commissioner, Bangalore, 1928.
- No. 4.* **Guineaworm Disease in Mysore State—**
By J. V. KARVE, M.B., CH.B., D.P.H., Retired Director of Health in Mysore, Bangalore, 1929.
- No. 5. **Report of the Delegation of the British Social Hygiene Council (Inc.), to the Government of Mysore, 1929.**
- No. 6. **Report on the Present Status of Birth, Death and Epidemic Diseases Reports in Mysore District, Bangalore City and Kolar Gold Fields, with Suggestions for Improvement—**
By E. R. SUNDARARAJAN, M.A. (Hons.), Superintendent, Bureau of Vital Statistics, Bangalore, 1929.
- No. 7. **A Survey of Mysore State for Enlarged Spleens and for Hook-worm and other Helminthic Infections—**
By W. C. SWEET, B.Sc., M.D., D.P.H., Consultant in Health in Mysore, Bangalore, 1929.
- No. 8. **Physician's Pocket Reference to the International List of Causes of Death, 1932.**
- No. 9. **Handbook of the Mysore State Department of Health—**
By J. V. KARVE, M.B., CH.B., D.P.H., Retired Director of Health in Mysore, Bangalore, 1933.
- No. 10. **Notes on Malaria in Mysore State—**
By W. C. SWEET, B. A. RAO and D. NURSING, 1934.
- No. 11. **Organic Manure from Street Refuse and Night Soil at Mysore City, India—**
By J. J. MIELDAZIS, B.Sc., C.E., M.A.S.C.E., Former Honorary Sanitary Engineer, 1936.
- No. 12. **Periodicity of Cholera in Mysore State—**
By P. Parthasarathy, L.M.S., B.S.Sc., L.R.C.P., L.R.C.S., D.T.M., D.P.H., Director of Public Health and E. R. Sundararajan, M.A. (Hons.), 1937.
- No. 13. **Morbidity Statistics in Mysore State—**
By P. Parthasarathy, L.M.S., B.S.Sc., L.R.C.P., L.R.C.S., D.T.M., D.P.H., Director of Public Health and E. R. Sundararajan, M.A. (Hons.), 1939.

* Not available.