

## **Sales catalogue: Puttick and Simpson**

### **Publication/Creation**

18th December 1930

### **Persistent URL**

<https://wellcomecollection.org/works/fjuwk85v>

### **License and attribution**

This work has been identified as being free of known restrictions under copyright law, including all related and neighbouring rights and is being made available under the Creative Commons, Public Domain Mark.

You can copy, modify, distribute and perform the work, even for commercial purposes, without asking permission.



Wellcome Collection  
183 Euston Road  
London NW1 2BE UK  
T +44 (0)20 7611 8722  
E [library@wellcomecollection.org](mailto:library@wellcomecollection.org)  
<https://wellcomecollection.org>

*Mr S. W. 18<sup>th</sup> December 1930*

*Short  
Brought  
Early*

P. S.	DATE	INITIALS
SALE	18. x 11. 30	STO v l
PURCHASE		
CHECK	23. x 11. 30	EL.
COLLECTED		
RECEIVED	15/1/31	
ACCESSED	16/1/31	
PASSED		



1930

*WA/Hmm/cm/sai/16/225*

PUTTICK & SIMPSON  
LONDON

*283. £498. 14. 6.*





*Short  
Huguenot*

Early Peruvian Pottery

THURSDAY, DECEMBER 18th,

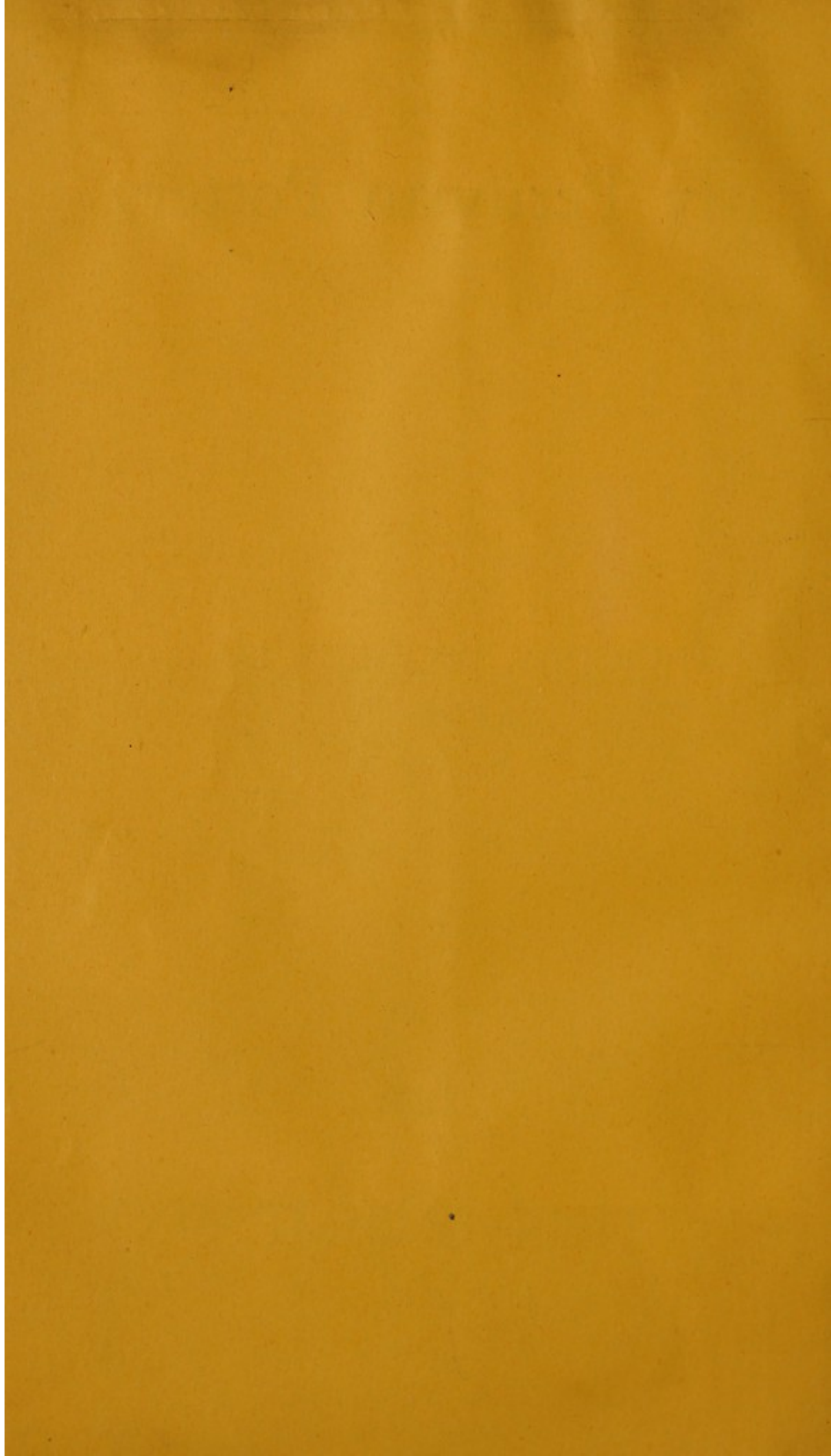
1930

*WA/Hmm/cm/sai/16/225*

PUTTICK & SIMPSON

LONDON

*Num 283. £498. 14-6.*



Lot	Amount	Lot	Amount
100	100	100	100
101	101	101	101
102	102	102	102
103	103	103	103
104	104	104	104
105	105	105	105
106	106	106	106
107	107	107	107
108	108	108	108
109	109	109	109
110	110	110	110
111	111	111	111
112	112	112	112
113	113	113	113
114	114	114	114
115	115	115	115
116	116	116	116
117	117	117	117
118	118	118	118
119	119	119	119
120	120	120	120
121	121	121	121
122	122	122	122
123	123	123	123
124	124	124	124
125	125	125	125
126	126	126	126
127	127	127	127
128	128	128	128
129	129	129	129
130	130	130	130
131	131	131	131
132	132	132	132
133	133	133	133
134	134	134	134
135	135	135	135
136	136	136	136
137	137	137	137
138	138	138	138
139	139	139	139
140	140	140	140
141	141	141	141
142	142	142	142
143	143	143	143
144	144	144	144
145	145	145	145
146	146	146	146
147	147	147	147
148	148	148	148
149	149	149	149
150	150	150	150
151	151	151	151
152	152	152	152
153	153	153	153
154	154	154	154
155	155	155	155
156	156	156	156
157	157	157	157
158	158	158	158
159	159	159	159
160	160	160	160
161	161	161	161
162	162	162	162
163	163	163	163
164	164	164	164
165	165	165	165
166	166	166	166
167	167	167	167
168	168	168	168
169	169	169	169
170	170	170	170
171	171	171	171
172	172	172	172
173	173	173	173
174	174	174	174
175	175	175	175
176	176	176	176
177	177	177	177
178	178	178	178
179	179	179	179
180	180	180	180
181	181	181	181
182	182	182	182
183	183	183	183
184	184	184	184
185	185	185	185
186	186	186	186
187	187	187	187
188	188	188	188
189	189	189	189
190	190	190	190
191	191	191	191
192	192	192	192
193	193	193	193
194	194	194	194
195	195	195	195
196	196	196	196
197	197	197	197
198	198	198	198
199	199	199	199
200	200	200	200



BUYER

AUCTIONEERS

Date

18/2/30

Lot	Amount			Lot	Amount		
	£	s.	d.		£	s.	d.
9	3	3	.	82	9	9	.
10	7	7	.	86	8	8	.
11	16	16	.	87	11	11	.
12	8	18	6	88	8	8	.
21	12	12	.	89	8	8	.
22	8	18	6	91	8	8	.
23	9	19	6	92	8	8	.
24	15	15	.	93	9	9	.
30	21	.	.	94	14	14	.
31	8	8	.	99	10	10	.
32	8	18	6	100	18	18	.
34	9	19	6	101	23	2	.
35	11	11	.	102	8	8	.
40	3	3	.	103	21	.	.
41	6	6	.	108	23	2	.
44	6	6	.	109	10	10	.
45	14	14	.	110	7	17	6
46	10	10	.	111	8	8	.
57	23	2	.	117	3	3	.
62	10	10	.	118	5	15	6
64	10	10	.	119	5	15	6
71	6	16	6				
72	8	8	.				
79	6	6	.				
81	14	14	.				
614	264	12	.				

£498.14.6

ESTABLISHED 1794

Telephone :  
Gerrard 3716 (two lines)

Telegrams :  
"Puttickdom, Westrand, London"

---

Catalogue  
OF  
A FINE COLLECTION  
OF  
PERUVIAN ANTIQUITIES  
COMPOSED CHIEFLY OF  
NAZCA AND TRUXILLO POTTERY VASES  
(Chimu Period 800—1400 A.D.).

THE PROPERTY OF A GENTLEMAN.

---

Which will be Sold by Auction by  
MESSRS. PUTTICK & SIMPSON

(W. G. HORSMAN AND N. H. ARCHER)

At their Reynolds Galleries, 47 Leicester Square, London, W.C.2

On Thursday, December 18th, 1930

At half past One o'clock precisely

---

MAY BE VIEWED THE THREE DAYS PRIOR FROM 10 A.M. UNTIL 5.30 P.M.



## CONDITIONS OF SALE.

---

I. The highest Bidder to be the Buyer; and if any dispute arise between two or more Bidders, the Lot so in dispute shall be immediately put up again and resold.

II. The Auctioneer shall regulate the bidding, and reserves the right to refuse a bidding, as he may think advisable.

III. In the case of Lots upon which there is a reserve, the Auctioneer shall have the right to bid on behalf of the Seller.

IV. The Purchasers to give in their Names and Places of Abode, and, if required, to pay down 1s. in the Pound, or more, in part of payment, or the whole of the Purchase Money, in default of which the Lot or Lots so purchased to be immediately put up again and resold.

V. The Lots to be taken away and paid for, whether genuine and authentic or not, with all faults and errors of description, at the Buyer's expense and risk within Two Days from the Sale; MESSRS. PUTTICK & SIMPSON NOT BEING RESPONSIBLE FOR THE CORRECT DESCRIPTION, GENUINENESS, OR AUTHENTICITY OF, OR ANY FAULT OR DEFECT IN, ANY LOT, AND MAKING NO WARRANTY WHATEVER.

VI. To prevent inaccuracy in delivery, and inconvenience in the settlement of the Purchases, no Lot can on any account be removed during the time of Sale; and the remainder of the Purchase Money must absolutely be paid on the delivery.

VII. Upon failure of complying with the above Conditions, the Money deposited in part payment shall be forfeited; and all Lots left uncleared, in conformity with these Conditions, may be resold by public or private Sale without further notice; and the deficiency (if any) arising from such re-sale shall be made good by the defaulters at this Sale, together with all charges attending the same. This Condition is without prejudice to the right of the Auctioneers to enforce the contract made at this Sale without such re-sale, if they think fit, and to any other rights and remedies vested in them by law or otherwise.

*Buyers who are unable to attend the Sale may have their Commissions faithfully executed by their obedient servants,*

PUTTICK & SIMPSON.

Auction Rooms for the Sale of  
All Fine Art Property,  
LEICESTER SQUARE, LONDON, W.C.

---

Collections Catalogued, Arranged and Valued for the Probate and  
Legacy Duty or for Public or Private Sale.

---

ESTABLISHED 1794.





55



8



24



THURSDAY, DECEMBER 18th, 1930.

AT HALF PAST ONE O'CLOCK PRECISELY.

*The Collection was the subject of an article, with illustrations, by Mr. Frank Davis, in "The Illustrated London News," October 25th, 1930.*

*The Collection is also exceptional in that the large majority of the vases and figures are in perfect condition.*

### NAZCA POLYCHROME WARE.

- 1 A shallow bowl, painted with conventional figures,  $8\frac{1}{4}$  in. diam. 1/8 Spink
- 2 Another, similar, painted with rayed ornament and masks,  $7\frac{1}{2}$  in. diam. 2/8 do
- 3 A bowl, painted with a border of serpents,  $6\frac{1}{4}$  in. diam. 1 1/2 2/8
- 4 A tapering bowl, painted with grotesque animals,  $5\frac{1}{2}$  in. diam. 2 1/2 Spink
- 5 A TALL BEAKER, painted with two human figures holding spears,  $8\frac{1}{4}$  in. high. 10/8 Webb
- 6 A beaker, painted with a bird, etc.,  $6\frac{1}{2}$  in. high. 5/8 do
- 7 Another, with trellis panels and painted with a border of swastika pattern,  $5\frac{1}{2}$  in. high. 3 1/2 2/8 do
- 8 A BOWL, painted with fabulous winged animals,  $6\frac{1}{4}$  in. diam. 9 1/2 Spink

\* See illustration.

- (3/8) 3. (9) Another, with spreading rim, painted with borders of conventional heads,  $6\frac{1}{2}$  in. diam.
- (7/8) 6. (10) Another, painted with a grotesque reptile, 6 in. diam.
- (16/8) 25. (11) A double vase, formed as male and female figures, the bodies heart shaped, 8 in. wide,  $5\frac{3}{4}$  in. high.
- (8 1/2 2/8) 20. (12) A globular vase, with double spout, painted with animals,  $5\frac{1}{2}$  in. high.

- 13 A globular vase, painted with a dragon and human faces,  $5\frac{1}{4}$  in. high. *8 1/2 Webb*
- 14 Another, painted with birds holding flowers,  $5\frac{1}{2}$  in. high. *8 1/2 Webb*
- 15 A globular vase, painted with a border of formal human figures,  $4\frac{1}{2}$  in. high. *5 1/2 Peruvian Minster*
- 16 Another, smaller, painted with human masks wearing head-dresses,  $3\frac{1}{2}$  in. high. *3 1/2 Beasley*
- 17 Another, with an angular design,  $2\frac{3}{4}$  in. high, and a large beaker, with trellis ornament,  $5\frac{3}{4}$  in. high. *3 1/2 Spencer*
- 18 A bowl, painted with a grotesque reptile with human face,  $5\frac{3}{4}$  in. diam. *5 1/2 Webb*
- 19 Another, with similar decoration,  $7\frac{1}{4}$  in. diam. *4 1/2 Spink*
- 20 A GLOBULAR VASE, with short neck and rudimentary handles, painted on either side with fabulous birds,  $6\frac{1}{2}$  in. high.

*14 1/2 Webb*  
\*\* See illustration.

- 12 1/2* 20. (21) ANOTHER, of similar form, painted with monsters and birds,  $5\frac{3}{4}$  in. high.

- 8 1/2* 16 (22) A small globular vase, with large tapering neck, painted with three horizontal figures,  $5\frac{1}{4}$  in. high.

- 9 1/2* 8. (23) A globular vase, with double spout, painted with birds, 6 in. high.

- 15 1/2* 13 (24) Another, larger, painted with birds and fish,  $7\frac{3}{4}$  in. high.

\*\* See illustration.

- 25 Another, similar, 7 in. high. *8 1/2 Spink*

- 26 A bowl, painted with a conventional dragon, 7 in. diam. *7 1/2 Webb*

- 27 A shaped bowl, painted with grotesque and other masks, and with rayed ornament,  $4\frac{1}{2}$  in. diam. *7 1/2 Webb*

- 28 A square shaped vase, with narrow spout, painted with masks, 4 in. high. *12 1/2 Webb*

- 29 A gourd shaped vase, with double spout, painted with Medusa-like masks and serpents, 6 in. high. *5 1/2 Webb*

- 20 1/2* 15 (30) A TALL BEAKER, painted with human figures holding branches of conventional foliage,  $8\frac{1}{2}$  in. high.

\*\* See illustration.

- 8 1/2* 16 (31) Another, with shaped neck, partly modelled and painted with a human head, 7 in. high.

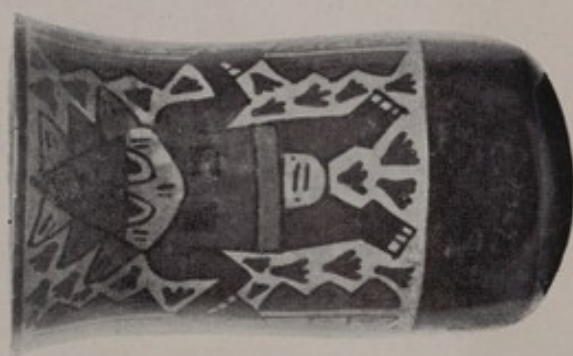








20



30



81

- (8 1/2) 16. (32) A tall beaker, with shaped rim, painted with figures in panels, 5in. high.
3. 33 A globular vase, with double spout, painted with two grotesque animals, 6 3/4 in. high. 6 1/2 80
- (9 1/4) 16. (34) Another, nearly similar, 7in. high.
- (11 8) 16. (35) Another, painted with birds, 6in. high.
- 36 Another, smaller, with similar painting, 4 3/4 in. high. 8 80 Webb
- 37 A beaker, with spreading rim, painted with conventional figures, 5 1/2 in. high. 6 1/2 80 do
- 38 Another, shaped, painted with a border of animals, 4in. high. 7 1/2 80 do
- 39 Another, larger, painted with a border of conventional birds, 5in. high. 5 1/2 80
- (3 8) 3. (40) A shallow bowl, painted with a border of animals, 7in. diam.
- (6 8) 8. (41) A bowl, painted with emblematical figures, 6 1/4 in. diam.
8. (42) Another, painted with a procession of birds, 5 1/4 in. diam. 13 80
- 43 A deep bowl, with spreading rim, painted with a similar design, 6in. diam. 5 1/2 80
- (6 8) 8. (44) Another, painted with a procession of winged animals, 6in. diam.
- (14 8) 12. (45) Another, painted with complex human figures, 5in. diam.
- (10 8) 15. (46) Another, painted with two animals and insects, 5in. diam.
- 47 Another, smaller, painted with animals, 4 3/4 in. diam. 5 1/2 80 Webb
- 48 A globular vase, with narrow neck, painted with a snake-like animal, 5 1/2 in. high. 7 80 Webb
- 49 Another, painted with a mask on either side, 5 1/4 in. high. 2 80 do
- 50 Another, painted with birds, 5 1/4 in. high. 7 1/2 80 do
- 51 Another, with rudimentary handles, painted with two mythical birds, 6in. high. 4 1/2 80 do
- 52 Another, of similar form, painted with animals, 5in. high. 6 1/2 80 do
- 53 Another, smaller, painted with complex masks, 4in. high. 3 1/2 80
- 54 Another, with beaker neck, painted with mythical birds, 4 3/4 in. high. 3 80



16. 55 A GOURD SHAPE VASE, with double spout, painted with two grotesque animals, the bodies with small birds,  $6\frac{1}{2}$  in. high.

\* See illustration.

12. 56 Another, painted with borders of grotesque and human masks,  $6\frac{1}{2}$  in. high.

- (2280) 16. 57 Another, painted with a double-headed monster holding a spray of flowers, 7 in. high.

- 58 A small beaker, painted with a procession of mythical birds,  $4\frac{1}{4}$  in. high.

- 59 Another, with spreading rim,  $3\frac{3}{4}$  in. high.

- 60 Another, painted with bands of masks,  $3\frac{1}{2}$  in. high.

- 61 A tapering bowl, painted with a double-headed monster, 5 in. diam.

- (1080) 8. 62 A bowl, with spreading rim, painted with a winged figure,  $3\frac{1}{4}$  in. diam.

- 63 Another, of similar form, painted with basket work,  $4\frac{1}{4}$  in. diam.

- (1080) 25. 64 A kettle shape vase, with double spout, painted with conventional ornament and birds, 8 in. high.

20. 65 Another, of nearly similar form, painted with three- and four-headed figures,  $6\frac{3}{4}$  in. high.

8. 66 A vase of buoy shape, with double spout and painted with borders of similar figures,  $7\frac{1}{2}$  in. high.

16. 67 A GOURD SHAPE VASE, with double spout, painted with a winged figure, grasping a head, 7 in. high.

- 68 Another, painted with a minute design of birds,  $4\frac{3}{4}$  in. high.

- 69 A small beaker, with spreading rim, painted with a border of winged figures, 4 in. high, and a small bowl,  $3\frac{1}{2}$  in. diam.

- 70 A shaped beaker, painted with two amphibious monsters,  $3\frac{1}{2}$  in. high.

- (6128) 8. 71 Another, with spreading rim, painted with formal figures wearing head-dresses,  $3\frac{1}{4}$  in. high.

- (880) 6. 72 A globular vase, with beaker neck, modelled and painted as a human mask, and with a border of mythical figures,  $4\frac{1}{2}$  in. high.



73 A circular vase, flat shape, with double spout, painted with masks, serpents, etc.,  $6\frac{1}{2}$ in. high. *980 Ashton*

74 Another, of globular shape, painted with a border of con-joined masks, 5in. high. *380 Ashton*

75 A circular vase, flat shape, with narrow neck, painted with a grotesque animal,  $5\frac{1}{2}$ in. high. *680 Spink*

76 Another, of similar form, painted with mythical birds,  $4\frac{1}{2}$ in. high. *880 Webb*

77 Another, with spreading rim, painted with formal animals,  $4\frac{1}{2}$ in. high. *780 do*

78 Another, painted with inverted heads, 5in. high. *680 Joyce*

*680* 8. 79 A bulbous vase, shaped as a demon head, 4in. high, and a small gourd shape vase, with double spout and linear decoration,  $4\frac{1}{2}$ in. wide.

*10* 80 A circular shaped vase, the handle modelled and painted with a human head, and with a spout,  $5\frac{3}{4}$ in. high. *1780*

*1480* 25. 81 A CIRCULAR SHAPED VASE, painted and modelled with human heads, 7in. high.

\* \* See illustration.

*980* 10. 82 Another, painted and modelled with a grotesque human figure, the head and spout joined,  $5\frac{1}{2}$ in. high.

83 A vase, in the form of a human figure, painted, and with a handle and spout, 7in. high. *680 Webb*

84 A bottle shape vase, moulded and painted as a human figure, 7in. high. *880 do*

85 Another, 8in. high. *1080*

*880* 20. 86 A bulbous vase, with handle and spout, formed and painted as an animal with a human head, 7in. high.

*1180* 8. 87 A bottle, with narrow neck and handle, painted and modelled with a figure,  $6\frac{1}{2}$ in. high, and a globular vase, with moulded human head and painted with conventional ornament, 5in. high.

*880* 20. 88 A glazed pottery figure of a man, wearing head-dress and holding a whistle, 8in. high.

*880* 12. 89 Another, of a woman, with painted decoration, 7in. high.

90 A globular vase, the handle with a modelled head and spout, and with painted decoration,  $6\frac{1}{4}$ in. high. *21280*



## TRUXILLO POTTERY.

- (88) 30 (91) A brown vase, formed as a coiled serpent with cat-like head holding a fish, and with handle and spout,  $8\frac{1}{4}$  in. high.
- (88) 8 (92) Another, brown and cream, formed as an otter, and with handle and spout,  $9\frac{1}{2}$  in. high.
- (98) 15 (93) A brown bottle shape vase, formed as a demon head, 8 in. high.
- (148) 20 (94) A BROWN AND CREAM VASE, formed as a penguin, with human arms, holding a drum, and with handle and spout,  $8\frac{1}{4}$  in. high.

\* See illustration.

95 A brown figure of an owl,  $4\frac{1}{2}$  in. high.

96 A RED AND CREAM VASE, formed as a squatting man, with crossed arms, and wearing ear-rings and necklace, and with handle and spout,  $8\frac{1}{4}$  in. high.

97 Another, of similar form, the figure wearing a hooded coat, and with raised arms, handle and spout,  $8\frac{3}{4}$  in. high.

98 Another, of similar form, the figure wearing a spotted coat with head-dress, and holding a sceptre,  $8\frac{1}{4}$  in. high.

(108) 15 (99) Another, of similar form, the figure crowned and holding a cat, and with handle and spout,  $7\frac{1}{2}$  in. high.

(188) 30 (100) A RED, BROWN AND CREAM VASE, formed as conjoined figures, with handle and spout,  $9\frac{1}{4}$  in. high.

(228) 16 (101) A BROWN VASE, formed as a demon's head, the hair decorated with serpents, and with handle and spout, 11 in. high.

\* See illustration.

(88) 16 (102) A brown and cream vase, of similar form,  $6\frac{1}{4}$  in. high.

(208) 25 (103) A DOUBLE VASE, with spreading rims, modelled as human heads, and with joined spout, 4 in. high, 7 in. wide.

104 A RED AND CREAM VASE, surmounted by a seated human figure, wearing a hood, and with a cat and ceremonial axe, handle and spout,  $8\frac{1}{2}$  in. high.

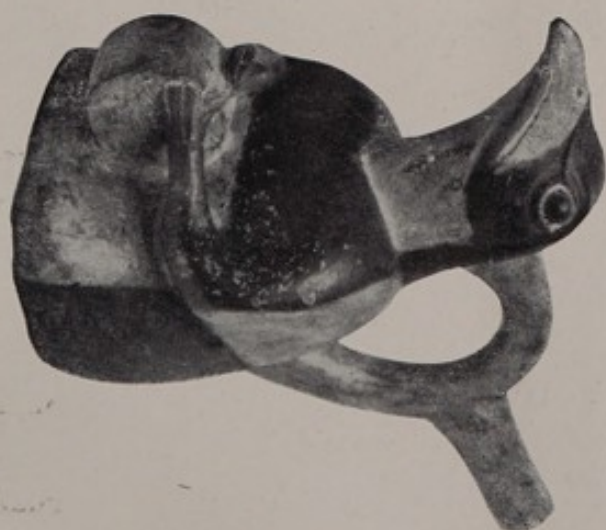
108



101



94







105 A RED AND BROWN SHAPED VASE, surmounted by a sprawling human figure with demon head, and with handle and spout,  $8\frac{1}{2}$  in. high.

106 A white and brown spherical vase, moulded and surmounted by a demon head, and with handle and spout,  $8\frac{3}{4}$  in. high.

107 A small brown vase, formed as a squatting man, holding an instrument,  $4\frac{3}{4}$  in. high, and another, the figure holding a vase on his back,  $4\frac{3}{4}$  in. high.

108 A RED AND CREAM GLOBULAR VASE, with conical spout, designed on either side with panels of demon figures in relief, 8 in. high.

\* \* See illustration.

109 Another, designed with a frieze of figures in relief, 7 in. high.

110 A bottle shape vase, with conical spout, crudely modelled as a human head,  $5\frac{1}{2}$  in. high, and a square shaped rattle, in plain pottery,  $6\frac{1}{2}$  in. high.

111 A black ware vase, surmounted by a grotesque human figure, and with handle and spout,  $8\frac{3}{4}$  in. high.

112 A QUIPUS, or series of knotted cords (the only form of recording historical events in the Inca period).

113 Twelve loaded wood pins, or spindle whorls, all with old thread, a fragment of textile weaving, 5 in. by  $2\frac{1}{2}$  in., and a quantity of ancient thread and wool.

FINIS.

*Messrs. Puttick & Simpson*

*beg to announce that their Sales of*

*Antique & Decorative Furniture & Objects of Art,*

*Old Porcelain,*

*Pictures, Engravings, Etchings &*

*Baxter Colour Prints,*

*Old Tapestries, Textiles & Carpets,*

*Old Silver & Jewels,*

*Books, MSS. & Autographs,*

*Arms & Armour, Coins & Medals,*

*Old Violins and other Musical Instruments,*

*and*

*Rare Postage Stamps*

*for the Spring Season will begin in  
the middle of January.*



NOTICE.

PERUVIAN POTTERY.

SALE, DECEMBER 18th.

ADDENDA.

TRUXILLO POTTERY ETC.

THE PROPERTY OF A GENTLEMAN.

114. A red and brown vase, formed as a squatting figure of a man, wearing conicle hat, 8 ins. high. 580
115. Another, of similar form, and one of a woman, 7 ins. high. 3 1/2 80 Webb
116. A red and cream vase, formed as a duck, and with handle and spout, 7 ins. high. 3 1/2 80 do
- 380 5-117. A red and brown vase, formed as a seated figure of a man,  $8 \frac{3}{4}$  ins. high.
- 18-118. A red flat shape vase, the back with linear decoration on cream ground, the handle modelled with the head of a man,  $12 \frac{3}{4}$  ins. high. 5 1/2 80
- 10-119. A black ware vase, modelled on either side with demon figures, birds and serpents in relief, and with handle and spout, 9 ins. high. 5 1/2 80

NOTES.

PERUVIAN POTTERY.

SALE, DECEMBER 1891.

ADDENDA.

TRUXILLO POTTERY ETC.

THE PROPERTY OF A GENTLEMAN.

2. A red and brown vase, formed as a squatting figure of

a man, wearing conical hat, 8 ins. high.

3. Another, of similar form, and one of a woman, 7 ins. high.

4. A red and cream vase, formed as a duck, and with handle

and spout, 7 ins. high.

5. A red and brown vase, formed as a seated figure of a

man, 6 1/2 ins. high.

6. A red flat shape vase, the back with linear decoration

on cream ground, the handle modelled with the head of

a man, 12 1/2 ins. high.

7. A black ware vase, modelled on either side with human

figures, birds and serpents in relief, and with handle

spout, 9 ins. high.





