

Sales catalogue: Glendining

Publication/Creation

10-12 December 1917

Persistent URL

<https://wellcomecollection.org/works/za7t5j2n>

License and attribution

This work has been identified as being free of known restrictions under copyright law, including all related and neighbouring rights and is being made available under the Creative Commons, Public Domain Mark.

You can copy, modify, distribute and perform the work, even for commercial purposes, without asking permission.



Wellcome Collection
183 Euston Road
London NW1 2BE UK
T +44 (0)20 7611 8722
E library@wellcomecollection.org
<https://wellcomecollection.org>

September 15, 1914
Messrs. GLENDINING & Co., Ltd.

7 Argyll Street :: Oxford Circus, W. 1.

(Adjoining Oxford Circus Station).

Telegraph Address: "NULLIFIED, LONDON."

Telephone: GERRARD 4434.

CATALOGUE

OF

An Important and Valuable Collection of

Japanese Works of Art

INCLUDING

LACQUER, INRO, NETSUKÉ, SWORDS, AND SWORD FURNITURE,

BEING THE

FIRST PORTION OF

The Hodgson Collection

NOW OFFERED FOR SALE BY MR. GEO. H. HODGSON.

TO BE SOLD WITHOUT RESERVE.

DAYS OF SALE:

First Day,	Monday, December 10th	..	Lots 1 to 129
Second Day,	Tuesday, December 11th	..	Lots 130 to 400
Third Day,	Wednesday, December 12th	..	Lots 401 to 601

1214

ON VIEW FRIDAY and SATURDAY, DECEMBER 7th & 8th, and MORNINGS OF SALE.

Telephone:
No. GERRARD 4424.

Telegraphic Address:
"NULLIFIED, LONDON."

Messrs. GLENDINING & CO., Ltd.

AUCTIONEERS, SURVEYORS, LAND & ESTATE AGENTS,

No. 7 ARGYLL STREET, OXFORD CIRCUS, W. 1

(Adjoining Oxford Circus Tube Station).

SALES BY AUCTION of PROPERTIES, GROUND RENTS and REVERSIONS held at the MART, E.C.

BUSINESS PREMISES, HOUSES, FLATS, &c., To be Let or Sold.

VALUATIONS FOR PROBATE AND MORTGAGE PURPOSES.
SPECIAL BRANCH for RAILWAY, SCHOOL BOARD and other COMPENSATION CLAIMS.

SANITARY SURVEYS AND PLANS PREPARED.

FURNITURE SALES held in Town or Country, and at their spacious Galleries at No. 7 ARGYLL STREET, W.

SURVEYS OF DILAPIDATIONS.

PROPERTIES SURVEYED and REPORTED ON in TOWN and COUNTRY.

REGISTER OF PROPERTIES, SHOPS, FLATS, &c., in which particulars are inserted free of charge.

PARTICULARS OF FREEHOLD AND LEASEHOLD GROUND RENTS FOR SALE, MORTGAGES, etc., should be sent to MESSRS. GLENDINING & Co., LTD., who have always Clients waiting to invest in these classes of security.

Particulars of Properties, Shops, etc., sent Free on Application.

FURNITURE, PICTURE, AND ART SALES are held periodically at the Galleries.

No. 7 ARGYLL STREET, OXFORD CIRCUS, W. 1

TERMS ON APPLICATION.

WA/Hmm/30/18/41

MESSRS. GLENDINING & CO., LIMITED,
7, ARGYLL STREET :: :: OXFORD CIRCUS, W. 1.
(ADJOINING OXFORD CIRCUS STATION.)

Telegrams: "NULLIFIED, LONDON."

Telephone: GERRARD 4424.

CATALOGUE

OF

An Important and Valuable Collection of

JAPANESE WORKS OF ART

INCLUDING

LACQUER, INRO, NETSUKÉ, SWORDS, AND SWORD FURNITURE,

BEING THE

First Portion of the Hodgson Collection,

NOW OFFERED FOR SALE BY MR. GEO. H. HODGSON.

TO BE SOLD WITHOUT RESERVE.

DAYS OF SALE:

MONDAY,	DECEMBER 10TH, 1917	LOTS 1 TO 179
TUESDAY,	DECEMBER 11TH, 1917	LOTS 180 TO 400
WEDNESDAY,	DECEMBER 12TH, 1917	LOTS 401 TO 601

LOTS ON VIEW FRIDAY AND SATURDAY,
DEC. 7th & 8th, and MORNINGS OF SALE.

PLEASE NOTE TIME AND PLACE OF SALE,
1.30 P.M.

CONDITIONS OF SALE.

- FIRST.—The highest bidder to be the buyer ; and if any dispute arise between two or more bidders, the lot so in dispute shall be immediately put up again and resold, provided the auctioneer cannot decide the said dispute.
- SECOND.—No person to advance less than 1s.; above five pounds, 5s.; and so on in proportion.
- THIRD.—In the case of lots upon which there is a reserve, the auctioneer shall have the right to bid on behalf of the seller.
- FOURTH.—The purchasers to give in their names and places of abode, and to pay down 5s. in the pound, or more in part of payment, or the whole of the purchase-money, *if required* ; in default of which the lot or lots so purchased to be immediately put up again and resold.
- FIFTH.—The lots to be taken away and paid for, whether genuine and authentic or not, with all faults and errors of description, at the buyer's expense and risk, within Two days from the sale ; GLENDINING & Co., LTD., not being responsible for the correct description, genuineness, or authenticity of, or any default or defect in, any lot, and making no warranty whatever.
- SIXTH.—To prevent inaccuracy in delivery, and inconvenience, in the settlement of the purchases, no lot can on any account be removed during the time of sale, and the remainder of the purchase-money must absolutely be paid on the delivery.
- SEVENTH.—Upon failure of complying with the above conditions, the money deposited in part of payment shall be forfeited ; all lots uncleared within the time aforesaid shall be resold by public or private sale, and the deficiency (if any) attending such re-sale shall be made good by the defaulter at this sale.
- EIGHTH.—If any owner has placed a reserve on any lot, the auctioneers reserve to themselves the right to publish the fact and price at which it is reserved.
- NINTH.—Should any china bear trade marks which are not genuine the auctioneers are to have the right to erase such marks before delivering to the buyer.

THE G. H. HODGSON COLLECTION.

(FIRST PORTION.)

CATALOGUE.

NETSUKE.

Lot

- 1 *Wood*: two monkeys eating peaches, signed *Masanao*; octopus on a halibut shell, frog on a bucket, signed *Masakatsu*; rat attacking a *mochi* on a stand, signed *Masakiyo*; Saigyô Hoshi seated, signed *Hoichi* 5
- 2 *Wood*: Shôjô asleep, signed *Seijô*; soldier seated licking his finger, clam at his feet (*erotica*); snail on an upturned bucket, signed *Shigemasa*; lotus pod, man with spectacles and moxa on his leg, signed *Toman*. 5
- 3 *Wood*: mask of a Shishi; Daruma, signed *Isshinsai*; lotus pod; Shishimai dancer, signed *Miwa*; Oni hiding under a hat. 5
- 4 *Wood*: Hotei seated, signed *Shinji*; child with Hannya mask doing bekkako, signed *Hojitsu*; Hanasakajiji, signed *Giokko*; physalis pods; sparrow dancer running; Shishimai, signed *Ransui*. 6
- 5 *Wood*: Jo and Uba in the pine cone; group of fishes in a basket. 2
- 6 *Wood*: Daikoku and Fukurokujiu as wrestlers; Emma O with Shiwokara, signed *Masanao*; two rats, signed *Tomokazu*; Hotei and a child playing Go in a bag. 4
- 7 *Lacquered wood*: Hotei; ditto, a Baku, silver lacquer; two wrestlers, signed *Itsumin*; and a bone bucket of Kaga no Chiyo. 4
- 8 Large piece of Umimatsu, inlaid with kanamono of shishi and boar; and ivory snake, snail, &c., in a reishi (San Sukumi). 2
- 9 *Wood*: grotesque mask of a man winking; another, signed *Giokkei*; large mask of Hannya; mask of a foreign devil with movable eye, signed *Fukai Muri*. 4
- 10 *Wood*: Shishi mask; Jo; another ditto, signed *Demé Sukemitsu*; small Okamé, signed *Yuman Usofuki*. 5
- 11 *Wood*: mask of a Rakan with ivory earring and lotus at back, three-quarter face, finely modelled. PLATE XIV. 5
- 12 *Wood*: small mask of Rôshô, very fine carving, signed *Chôfu Ikkan*. PLATE XIV. 5
- 13 *Wood*: masks of Okamé, Oni, Hannya, and two other devils, signed *Toun, Giokko, Demé Uman, Asahi*. 6

- 14 Wooden masks of an old man ; Hannya ; a devil, inscribed *Shuzan* ; old man, signed *Demé Yuman* ; and two variants of *Okamé*. 6
- 15 Red lacquer mask of Obeshimi, signed *Soshin* ; wooden Kijo, signed *Demé* ; Uzume, signed *Masaharu* ; ivory, Otobide, signed *Hogioku* ; and *Okamé*, signed *Homei*. 5
- 16 Wood okimono : two *ushidoji* under a pine tree ; bamboo, with stand, devils having a drinking bout, signed *Seimin* ; and a dragon with its progeny, carved bamboo.

IVORY OKIMONO.

- 17 Man feeding chickens, signed *Ogawa Seisô* (Shizumune).
- 18 The three Saké tasters, Buddha, Lao Tze and Confucius, handsome piece, signed *Ogawa Sosei*.
- 19 Ebisu seated reckoning his wealth on a Soroban ; Tai in a basket and writing box at his side, fine specimen, signed *Toshimune*.
- 20 Fisherman on a raft shooting an arrow, signed *Giokuzan*.
- 21 Fine figure of a Chinese Princess playing the Biwa, seal signature, *Busen*.
- 22 Three small birds, cock, hen and chick on a stand ; and a merchant seated, taking stock, assisted by a child with a steelyard, signed *Munemasu*. 4
- 23 A delightful group, old man with spectacles watching children catching fish ; pearl road sign, inscribed "Sumida Gawa, Bushu, Meiji 30th year," signed *Masatoshi*.
- 24 A fine figure of a warrior with a spear (Kato Kiyomasa), signed *Sancharu*, Nihon Koku Maruki seisu. PLATE I.
- 25 Important group of an old man seated in a kago admiring an okimono of a stag shown him by one of his bearers, signed *Sano Mitsukazu*.
- 26 Fine well-poised figure of a girl standing holding a Shibayama fan, and receiving cherry blossoms all over her dress, signed *Nobuyuki*. PLATE I.
- 27 Large group of the Seven Gods of Luck in the Takarabuné ; Daikoku singing Utai, Benten and Jurojin playing music, Hotei shouting, Bishamon pointing, Fukurokujiu and Ebisu performing a dance signed *Meikosai Sokei*. 1
- 28 Urashima Taro looking at himself in a mirror, spirited figure, signed *Yugioku*. PLATE I.
- 29 Two coopers busy making tubs, signed *Ogawa Shizuhidé*.
- 30 Two carpenters cutting through a baulk of timber, signed *Soho* (Muneyasu).
- 31 Saw-maker scraping saw blades, signed *Jiuzan* ; man reclining on a Chinese stand, reading, his tobacco bon at his feet, signed *Shibayama*. 2
- 32 Tall figure of a fisherman throwing a net, a marvel of minute workmanship, the stand of wood represents water swirling around rocks and plants, signed *Riukosai Koraku* (Mitsuraku). PLATE I.

- 33 Woodcutter smoking, reclining amongst faggots and peonies, signed *Giokudo*. PLATE I.
- 34 Woman and child in a kago with two bearers, signed *Ogawa Taimin*.
- 35 Figure of Kwanyon holding a small Arhat, representing a huge statue, at the foot of which pilgrims swarm a stairway, signed *Giokusen*.
- 36 Figure of an Aino fisherman carrying a large fish and a langouste, signed *Hogioku*. PLATE I.
- 37 Lady travelling in a Jinrikisha, signed *Ogawa Shizunao*.
- 38 Small shrine of Kwannon, signed *Mingioku*.
- 39 Fierce-looking fisherman carrying a shark with long snout wrapped in straw, signed *Giokudo*. PLATE II.
- 40 Sword expert examining a sword ; a pair of swords placed on a katana kaké at his side, signed *Shizumuné*. Nice piece, finely carved, fit for a sword collector. PLATE II.
- 41 Aino carrying a tree trunk for the bear cage, signed *Koki*.
- 42 Umbrella-maker at work, signed *Shizumasa* ; musical instrument-maker planing a Samisen handle, signed *Shizutoshi*.
- 43 Five people and a Jinrikisha in a ferryboat, signed *Seigiokusai Yasumuné*.
- 44 Very handsome two-leaf screen, 13ins. wide, pheasants and herbs of autumn in Shibayama inlay ; at back, eagle on a pine tree and flying sparrows, low relief, signed *Mitsudoshi*. PLATE II.
- 45 Box delicately carved as a basket filled with creeper vine, three rats as feet, signed *Shigetoshi (mori)*.
- 46 Old man holding a frog and a chicken, the child with him watching chicks, signed *Kofu (Mitsukaze)*. PLATE III.
- 47 Delicately-carved ivory box, Chinese fretwork, the lid representing the progress of Wu Ti in the Western Paradise, openwork sides polychrome. 1
- 48 A heron standing amongst reeds, signed *Riakusensha Akao (Sekiji)*. PLATE II.
- 49 Openwork ivory pit'ong, Chinese scene, children, sage and women in a garden.
- 50 Bugaku dance, musician beating the big drum, spirited carving, signed *Hoitsu (Toyokazu)*. PLATE III.
- 51 A fine specimen of Chinese turner's skill, being 14 or 15 concentric balls in openwork diapers with ivory chain in one piece, figure decoration on the outside.
- 52 A very fine figure of a hunter with a hawk on his fist and a pheasant in his bag, signed *Kiokumei (Asahi-Aki)*. PLATE III.
- 53 A tusk carved with two monkeys on a cherry tree, in low relief, signed *Chikamasa (Maruki)*. PLATE III.
- 54 Flower-seller with a stock of newly-opened plum blossoms, accompanied by a child, signed *Ogawa Muneyasu (soho)*.
- 55 Warrior standing with a spear, inscribed Saneda Yukimura no Zo, signed *Mitsunao*. PLATE III.
- 56 Small Chinese pit'ong with deeply-carved cartouches of garden scenes.

- 57 A finely-modelled figure of Daruma standing on the waves on reeds, shakujo in hand, signed *Toyoraku*.
PLATE III.
- 58 A set of six figures : two dancing girls and four musicians with samisen, flute, drum and tsuzumi, signed *Muneyasu*.
- 59 Shibayama worker and two helpers working on a vase twice the height of a man.
- 60 Two men playing Go by lamplight, white plays, signed *Sosai*.
- 61 Yoshitsune standing holding a *saihai*, signed *Muneaki*.
PLATE III.
- 62 Tusk carved as a rock, pine tree and waterfalls, snakes, &c.
- 63 A man playing the Biwa, nicely-carved piece.
PLATE III.
- 64 Fine standing figure of the old man Jo of Takasago, with besom and minogamé, signed *Horaku* (Toyoraku).
PLATE III.
- 65 Fine tall pair of cranes, the body ivory with tortoise-shell bill and tail feathers, and metal legs. 2
- 66 Pair of large tusks, decorated in Shibayama work with figures of Chinese sages, chrysanthemum worshippers, and peacocks, silver and enamel details. Very handsome decorative work, with fine lacquered stand (Daimyo lacquer)
PLATE IV.
- 67 Elaborately-carved tusk, the figures being six fishermen on the seashore running away in fright, whilst several others stare and shout, signed *Hakûûn*.
PLATE IV.
- 68 Large tusk decorated in lacquer and Shibayama with chrysanthemum, peony, hydrangea, lotus, &c.
PLATE IV.
- 69 Miniature writing box and counters ; small Chinese pit'ong with Kebori landscape. 2
- 70 Small box shaped as crabs and lotus ; ivory koro ; and four rouge boxes, also a rough. 6
- 71 Two ivory peacocks and chicks on a mountain of Kokutan wood, inlaid with flowers and small bamboo.
- 72 Carved ivory eagle, 36 inches from tip to tip of the wings, 42 inches from tip of bill to tip of tail, made up of hundreds of ivory feathers separately carved and adjusted, fitted on a metal framework, the wings can be removed separately ; fitted on a wooden stand, total height overall, 51ins. It was said that only another such piece was known, it being in the possession of the Tsar Alexander III.
PLATE V.
- 73 Ivory cabinet, 25 ins. long, 17½ ins. high, decorated with subjects from the Genji Monogatari, landscapes, dancers, &c., the top covered with emblems of the Genji Chapters.
PLATE VI.

LACQUER.

- 74 Small suzuribako, decorated in takamakiyé on nashiji, cranes and pine trees by the side of a mountain stream, chrysanthemum inside, kiku mizuiré. 1
- 75 Suzuribako, usual large size, nashiji with takamakiyé decoration of Shochikubai and aoi leaves, inside lid cranes and Katawa guruma on square poem papers. 1

- 76 Cabinet containing a set of Uta awase cards, black lacquer flecked with gold and with hiramakiyé decoration of cherry trees and willows. 1
- 77 Bentobako, large size, oblong, decorated with the views around Lake Biwa, in takamakiyé. 1
- 78 Cabinet of Shitan wood decorated in ivory and lacquer on the door, with arhat, tengu, magnolia, &c., six drawers. 1
- 79 Tabako bon, handsome specimen, nashiji, decorated with paulownia trees in bloom, takamakiyé chased silver howo top to fire-box. 1
- 80 Cabinet with vide poche top, mura nashiji charged with karakusa and shogunal badges in takamakiyé. 1
- 81 Jubako, Kinji over mother-of-pearl with design of the sages in the bamboo grove, birds, landscape, &c., and a lengthy poem, the lowest tier forming a suzuribako. 1
- 82 A very pretty cabinet, Kinji and aogai, with four drawers and sliding doors, birds and plum tree, cranes and clouds decoration; rich specimen with silver fittings. 1
- 83 Lacquered okimono with face and hands of ivory, the dress gold and coloured lacquer, a girl adjusting her hairpin. PLATE VII.
- 84 Globular vase, gold hiramé and panels of shibayama inlay representing a cherry blossom picnic; and another, floral party, together with two companion vases (3). PLATE VII.
- 85 Tsuishu cabinet, 13 by 10 by 8½ ins., with four long drawers in equal pairs, square diaper charged with floral circles. 1
- 86 Small tabako bon, temple gardens in takamakiyé on nashiji, silver fittings. 1
- 87 Kyarabako, incense set, nashiji and takamakiyé, with plum blossoms above a river, with set of fittings in nashiji boxes. 1
- 88 Kyarabako of fine Kinji with high relief gold takamakiyé decoration of chrysanthemum near rapids, repeated on tray and inside of lid, silver rim and same design of Jukogo and Koro. (Exhibited at the Japanese Red Cross Loan Exhibition, 1915). PLATE VIII.
- 89 Pair of globular boxes in tsuishu lacquer, butterflies and flowers in high relief. PLATE VII.
- 90 Tabako bon, light gold nashiji decorated with Shochiku bai in takamakiyé. (Loan Exhibition, 1915).
- 91 Jar, Cha tsubo, in black lacquer and iroyé togidashi with design of the Rokkasen, the work of very fine technique and quality. 1
- 92 Kyarabako, incense set, nashiji with floral crests in low relief gold lacquer, complete with scoring board and all fittings. 1
- 93 Hexagonal Jukogo, old mother-of-pearl inlay of conventional floral scrolls, the top Kinji with Chinese story in mother-of-pearl, inside silver lacquer and mother-of-pearl flowers, silver rims, uncommon. 1
- 94 Bunko, old wood surface, decorated in high relief takamakiyé with a parrot on a tsuishu stand to which is tethered a Karashishi, inscribed inside, "Ritsuo, age 80."
- 95 Bunko and suzuribako, takamakiyé and inlays of soapstone and other materials representing Chinese scenes, Gama sennin, &c., large size. 2

- 96 Bunko and suzuribako Kinji with reserved aogai design of peonies, kiku, cherry blossoms, birds, &c., inside a crane on nashiji, large size. 2
- 97 Katana kaké gold lacquer diapers all over the top shelf, representing two books of the Genji Monogatari—suitable for three swords, cabinet and three drawers in base.
- 98 Tabako bon, nashiji with reserves of panels in gold lacquer on black, flowers and birds design, inlaid bronze fittings. 1
- 99 Small cabinet with vide poche top, mura nashiji with aoi leaves in flat gold lacquer. 1
- 100 Two tsuishu boxes, children at play with swing and Karashishi mask. 2
- 101 Octagonal iroyé togidashi lacquer, millefleurs design, floral fukiyose inside on silver nashiji, inscribed *Shunsho* (Harumasa). PLATE VII.
- 102 Square stand-shaped box of gold takamakiyé landscape design, with silver rim (illustrated on PLATE VII.), together with three gold lacquer sakazuki with plum blossoms design on hiramé. 4
- 103 Bentobako, mura nashiji with chrysanthemum badge all over, tsuzumi shape with silver fittings.
- 104 Bentobako, nashiji with design of cherry tree in bloom, the bottle shaped as a shojo.
- 105 Cake-box, chrysanthemum shape, old nashiji with floral designs in flat gold lacquer. 1
- 106 Carved wood figure of a girl with ivory face and hands, her dress inlaid in Shibayama work, carrying an umbrella. 1
- 107 Writing table and suzuribako, black lacquer decorated with fireflies, the edges gold lacquer with silver fittings. PLATE IX.
- 108 Bunko, suzuribako and writing table (Bundai), a complete set, nashiji beautifully decorated with the mountains of Yoshino covered with cherry trees in bloom, takamakiyé and hiramé. PLATE IX.
- 109 Jubako, Kinji over reserves of an inlaid aoi design of clematis, the two lower portions being trays on four legs.
- 110 Katana kaké, black lacquer with inlays of mother-of-pearl in various colours, representing Arashiyama landscape and a fishing village.
- 111 Bentobako shaped as a cabinet, decorated with a Korin design of warabi and gentian, pottery saké bottle.
- 112 Set of six suzuribako, in jubako shape, with cover, black lacquer decorated with crane, willow, and Chinese scrolls in aogai. 1
- 113 Model of a Norimon, nashiji with umebachi and mitsutomoyé in gold lacquer.
- 114 Takarabuné, the Boat of the Gods of Luck, loaded with seven small Kogo (being the Takaramono), gold lacquer, partly togidashi, a handsome specimen. 1
- 115 Large stand, black lacquer decorated with cranes and other emblems of longevity (for the marriage ceremony).
- 116 Cabinet of ivory and lacquered wood decorated with the Story of Kojima Tadanori, with revolving cabinet inside. 1

- 17 Cabinet with vide poche top, two drawers decorated with chrysanthemum on the sides of a brook,
in gold takamakiyé. 1
- 18 Circular suzuribako, Kinji, the corner of the Miidera belfry, silver lacquer inside with Katada pavilion
inside.
- 19 Shitan wood box on legs and square frame, inlaid with mother-of-pearl design in Chinese style, bamboo,
birds, &c.
- 20 Box of tools (saw, hammer, &c.), for the incense game, mottled cherry-red lacquer, fall front disclosing
a plum tree and a poem, togidashi and inlaid aogai (No Koro, scoring board, or small utensils).
- 21 Small writing box, Shikishi shape, togidashi, and poem about Ogura Yama maples in autumn, land-
scape to match, after Isen Hogen.
- 22 Octagonal writing case imitating a cake of Chinese ink on which are laid brushes.
- 23 Fubako with shochikubai decoration in gold takamakiyé on black.
- 25 Writing case, Kinji, with reserves of Kylin, dragon, Howo, &c., in aogai inlay.
- 30 Lacquered tortoise-shell trays, powder box, patch box, and small cabinet, decorated with Fuji, chanoyu
utensils, wild pink, &c., in raised gold lacquer.
- 31 Pair of stands, gold lacquer with landscape, pine tree and waterfall, &c., each with a set of three
saké cups, red and gold takamakiyé, with similar design. 8
- 32 A very handsome box decorated all over in gold takamakiyé, various colours, with illustrated books
and book covers, Hiaku nin Isshu, Ise Monogatari, Korin's designs; Toto nishiki, Thirty-six
poems, &c. PLATE X.
- 33 Jubako suzuribako for the poetry game, five tiers nashiji charged with waterfall and Yoshiro land-
scape of flowering cherry blossoms, inlaid with an ashidé of silver.
Lid only illustrated on PLATE X.
- 34 Oblong box, hiramé with peacock in very high takamakiyé, inside tray moon rising above a lake,
nashiji base. PLATE X.
- 35 Silver-lined bowl to match above, the peonies here modelled in tsuishu. PLATE XI.
- 36 Tray, Kōgo and silver-lined koro for an incense set, Somada inlay of exquisite quality, decorated with
flowers, and a flower basket, gold and aogai. PLATES X. AND XI.
- 37 Three lozenge boxes, Kinji, with decoration of butterflies on takamakiyé, on a hexagonal stand,
togidashi design of chrysanthemum and Somada diapers.
- 38 A large tray, silver lacquer with togidashi design, lady and bearer in a snow landscape, after Hiroshigé.
- 39 A handsome cabinet, Kamakura bori in red and black, Chinese landscape and door, aogai floral scrolls
on top, single shelf inside, and a marqueterie box with six drawers, natural wood lacquered
over. 2
- 40 Incense set, natural kokutan wood decorated with cock, hen and chicks, nashiji inside, with fittings 1
- 41 Pretty Jubako, decorated all over in takamakiyé with floral circles on brocade togidashi, landscape
tray inside, outer sheath chrysanthemum all over. PLATE XI.

- 142 Small chabako with fittings, Kirimon on Rinzu diaper, a box of Eighteenth Century playing cards, and a set of three kogo in an oblong box.
- 143 Two models of Torii, red lacquered wood, a chabako with kiku decoration, and a tray shaped as an open book with landscape decoration.
- 144 Hexagonal Kinji box containing three lozengular kogo emblematic of winter and autumn, the outer design emblematic of spring with cherry trees in bloom. PLATE XI.
- 145 Companion piece, circular, with spring design, the central kogo in two tiers, similar technique. PLATE XI.
- 146 Luncheon table shaped as a shogi ban, the dishes shaped as shogi pawns, black and red lacquer; a fubako with iris in aogai on black ground; and two cup stands, black decorated lacquer. 4
- 147 Fubako, long shape, with landscape in togidashi and takamakiyé, several Tanzaku inside, and a paper box, black with coloured aogai inlay of floral design. 2
- 148 Square kogo, red lacquer with okihiroamé of gold, black birds on a willow in takamakiyé, rich piece. PLATE XI.
- 149 Small circular kogo, the third night of the moon, sumiyé togidashi. PLATE XI.
- 150 Pair of square trays with deep sides (for clothes), mura nashiji with a hawk on a stand in each, takamakiyé, handsome work.
- 151 Another pair of large square trays for clothes, decorated with a hydrangea design in takamakiyé and mother-of-pearl.
- 152 A very large and highly decorative square tray with deep sides, nashiji, with cherry tree in bloom in takamakiyé and heidatsu.
- 153 A dressing-room set of utensils: boxes for hair brushes and combs, stands and boxes for dressing material, towel rack, mirror, &c., black lacquer with takamakiyé design of pine tree, bamboo, camellia, with mitsu aoi badge; scarce in that state of completeness. a lot
- 154 Travelling chest, wood, with inlaid and lacquered mother-of-pearl crests of chrysanthemum, and nine cash; lined brocade.
- 155 Tsugaru lacquer box, containing a bow and a set of toy arrows; cavalry dipper, aogai on black, and a war fan with finely-chased gilt metal fittings, dragon decoration.
- 156 Square saké bottle with sparrows and bamboo decoration; another with floral design, and two more, shaped as Shojo figures. 4
- 157 Smoker's cabinet made of a tree stump, the natural shape adapted with ledges and drawers, bamboo design lacquered on, and an okimono on a tray, representing a mountain on which are placed two birds. 3
- 158 Large nashiji bookshelf with takamakiyé design of cherry trees in bloom on the banks of a river. 1
- 159 A large and highly decorative standing screen, 53in. square overall (tsuitaté), decorated in Somada inlay with a view of Fuji towering above pine trees on the back, the front decorated with two peacocks amongst peonies under a pine tree, all aogai inlays on black ground. Choice specimen. PLATE XII.

- 160 A handsome cupboard for clothes, with five deep drawers, overall dimensions 4ft. wide, 4ft. 3in. high, and 17in. deep, the doors decorated in aogai inlay with a design of two Howo on a pine tree. PLATE XII.
- 161 Big drum for the Bugaku dance, decorated with dragons. A scarce specimen in this country, suitable for a museum. 1
- 162 A cabinet built in a portion of hollow tree trunk with shelves, etc., intended to represent a mountain with waterfall and river at foot; together with stand to match. 1
- 163 Kamakura bori vase, red lacquered with dragons in high relief all over. 1
- 164 Pair of Koma Inu, powerfully carved and lacquered over canvas, inlaid metal bells, 34in. high, polychrome decoration. 2
- 165 An altar, carved and lacquered wood, gold on black with design of birds in the round on the plinth, together with a figure of Amida Nyorai, gilt lacquer wood; two bronze pricket candlesticks and cloisonné enamel lotus vases. a lot
- 166 Cabinet, gold lacquer, Kinji and nashiji, decorated in takamakiyé with the Stories of the 24 Paragons of Filial Virtue. By Harui of Kyôto; 43in. wide, 47in. high, 20in. deep. PLATE XV.
- 167 Tsuishu cabinet and stand, Chinese landscape in three colours, the flat shelves decorated with takaramono in iroyé togidashi, 5ft. 2in. high, 28in. wide, 14in. deep.
- 168 Cabinet on stand, natural veined wood and lacquer, 5ft. 6in. high, 2ft. 7in. wide, and 12in. deep, decorated in takamakiyé inlay with birds and grasses, five drawers and two cupboards.
- 169 Very large cabinet, 6ft. 8in. high, 5ft. wide, 18in. deep (overall height, 2ft), with three recesses and fourteen drawers of various sizes, decorated in Shibayama inlay with the Three saké tasters, flowers and flower baskets, ivory and takamakiyé. Useful and decorative PLATE XV.
- 170 Seated figure of the Buddha Amida Nyorai seated, fine carved figure, lacquered gold, complete with stand and funagoko, 7ft. 2in. high overall, and 3ft. 6in. square base; a very fine specimen. PLATE XIII.
- 171 Pair of Kai Oké, nashiji with Tokugawa badges in takamakiyé (with set of shells). 2
- 172 Paper box decorated with flowers in fan shapes, Mitsudaso work, metal tray with lacquered centre inlaid with aogai pattern of flowers and Howo bird.
- 173 Chinese fan, plaited ivory with lotus appliqué, war fan with astrological design; another with tactical inscription and chrysanthemum decoration. 3
- 174 Pair of stirrups, gold nashiji and takamakiyé of peacocks. 2
- 175 Stand decorated with aogai inlay on black, Chinese scene and peacocks, overall width 14in., height 17½in.
- 176 Jubako in two tiers, decorated all over with a brocade design in togidashi imitating a stage curtain, the outer sheath forming the stage railings proper, the top decorated with a Howo and paulownia in takamakiyé; fine piece. 1
- 177 A very fine model of a boat, 3ft. 4in. long, with spread sail, decorated all over in gold lacquer, the sail togidashi brocade design; exceptional specimen.
- 178 Large stand, black lacquer with Chinese landscape inlaid in mother-of-pearl, 3ft. 6in by 2ft. by 13½in. high.
- 179 Another, smaller, with scroll ends, Sennins and boys watching Oshikio on the crane; 37in. by 15in. by 12in. high overall. Somada work of good quality.

End 13 day

INRO.

- 180 Two cases, iron, decorated with Hirata enamels, silver lining, mokume ojimé openwork bronze manju, floral scrolls ; another, cloisonné with metal work gourd netsuké 2
- 181 Single case, silver in shibuichi sheath, decorated in relief with the Tokiwa Gozen, her children and a soldier, signed *Hidemitsu* (Shuko), Shibayama manju and ojimé.
- 182 Two cases, carved kurogaki wood, Chinese landscape slightly lacquered with inlaid details, the whole in very high relief, signed *Shinriu* ; double mask ojimé, Chinese landscape netsuké, signed *Oyama Nanshi*, aged 63. PLATE XIV.
- 183 Three cases, gold togidashi and colour, a basket of treasures under bamboo, being part of the story *Shitakiri Suzumé*, signed *Tojiu*, in a sheath of black lacquer with kirikané and Shibayama inlay of the old man and the sparrows ; tsuishu manju, Chinese scene. 3
- 184 Two cases, Sumiye togidashi of landscape on Kinji, and cherry tree branch on silver ground, signed *Shiomi Masanari* ; two cases, hydrangea on gold ground, Korin design. 2
- 185 Five cases, black, with Yemma O in high relief, red coloured face, brocaded dress, signed *Ganshosai Koji*, Kagamibuta, one of the Ni O. 1
- 186 Three cases, ivory, inlaid in Shibayama work with three fishermen, signed *Nakayama* (Chuzan) ; tsuishu ojimé and mokugyo netsuké.
- 187 Three cases, black, inlaid with a cock, hen and chickens under bamboo, aogai.
- 188 Three cases, uncommon style, tsuishu design, a Chinese sage and his attendant in a garden, a youth bringing flowers on the other side, all background gold hiramé ; guri bead, netsuké, wood, a cow, signed *Ikkwan*. PLATE XIV.
- 189 Four cases, Kinji, five boats inlaid gold and silver ; single case, wood, decorated in relief with square poem papers with various designs, signed *Kwansai* ; manju, a snail on a rotten plank.
- 190 Five cases, slightly raised gold lacquer landscape, signed *Kajikawa*. PLATE XIV.
- 191 Three cases, black, with engraved views of Omi and their description, signed *Genkosai*, midwinter of Ansei, 4th year. PLATE XIV.
- 192 Four cases, Kinji, a cock and hen under a cherry tree in bloom, takamakiyé, signed *Mitsutoshi* ; tsuishu manju, clematis scrolls. PLATE XIV.
- 193 Five cases, iroyé togidashi on rôgin ground, two women chasing butterflies, netsuké, a drunkard. PLATE XIV.
- 194 Four cases, iroyé, togidashi on black, children gathering persimmons, signed *Shiomi Masanari*.
- 195 Four cases, mountain landscape, waterfalls and boat in a river, all gold takamakiyé, fox mask netsuké, signed *Tenkaichi Demé*.

LACQUER, VARIA.

- 196 Saké bottle shaped as a girl seated holding a peach, Karakusa and takaramono, hiramakiyé decoration.
- 197 Four combs, gold takamakiyé : box design, creeper, chrysanthemum and fan, bamboo, trellis and sparrows. 4
- 198 Combs : togidashi design of Shoki banner, takamakiyé of boats and cranes, small pines in the mist, fukiyose, Kodogu, signed *Masanari*. 5

- 199 Combs: takamakiyé of birds and maple tree, Yabukoji, chidori and waves overlapping brocade patterns, Mitsu aoi brocade. 5
- 200 Combs: lacquered ivory, flower designs, red bream on natural wood, Kamakura bori with peony design. 6
- 201 Combs: takamakiyé designs of flowers, birds, dragons, tsugaru nuri and brocade design. 7
- 202 Eight hairpins, various, decorated lacquer ends with floral designs, birds, &c. 8
- 203 Small circular box, aogai decoration of Chinese garden, and a hexagonal vase with aogai inlay all over.
- 204 Small Kogo, black, with Kataguruma design in mother-of-pearl inlay; small natsumé Kinji with hexagonal Somada brocade design.
- 205 Square natsumé, nashiji with pine tree and rock decoration, and a small cabinet, natural wood, with decoration of insects in takamakiyé. 2
- 206 A large handsome gold lacquer cabinet for clothes, nashiji decorated with cranes and pine tree of Horaizan in takamakiyé, Karakusa all over the inside, 3ft. 1in. by 3ft. 5in. high by 18in. deep; chased Sentoku fittings (with purple silk slip-on cover).
- 207 Circular Kogo, shaped as a big drum, decorated with a dragon, in raised gold lacquer on hiramé, and containing nine small Kogo with fuji tomoyé design.
- 208 Small incense set, Kogo and Koro in openwork sheath with gold rinzu pattern all over.
- 209 Small togidashi tray, pine tree in gold and colours, model of Daikoku's hammer in togidashi and gold hiramakiyé.
- 210 Small, square plated workbox with bamboo handle, saké bottle, shaped as a pile of rice bales in gold lacquer, saké bottle with chidori and waves decoration.
- 211 Small Kogo with rinzu decoration, another with landscape, small drug box (no drugs), with bamboo and sparrows in flat gold, an egg decorated with gold clematis Karakusa, a small shrine of Agni Deva
- 212 Kobako shaped as a drum with inner tray decorated with minogamé and rock, pretty specimen. 1
- 213 A solid persimmon wood Sugoroku board, with bag of pawns, decorated with bamboo and clematis.
- 214 Small cabinet with ten small boxes each decorated in togidashi, in a sheath of black lacquer with design of flowers, over which is thrown a net. A pretty piece. 1
- 215 Kataguichi, yellow lacquer with combed waves, signed *Zeshin*; and a dish of worm-eaten wood with wasp on peaches in high relief takamakiyé, signed *Ikkokusai Rijo*.
- 216 Set of three very large Sakazuki, black lacquer with carp in the waves, takamakiyé and togidashi, the largest 2ft. in diameter, signed *Eishin* (Naganobu).
- 217 An extremely large decorative Sakazuki, black lacquer flecked with gold, decorated with seven gold takamakiyé fans, representing footballers, quails, herbs of autumn, landscape, &c., in very fine technique; at back, crows and plum blossoms, 31½in. diameter.
- 218 Large circular ivory plaque, 25½ in. diameter, representing Watanabe no Tsuna and the witch, nashiji back.
- 219 Another, similar technique with three men wrangling about a fish, being a parody of the Three Saké tasters; 29½in. diameter. 1
- 220 Sugoroku board of Kokutan wood, decorated at the ends with plum Karakusa and circular suzumé mon on nashiji, with pawns. 1

KANAMONO, SWORD FITTINGS AND SWORDS.

- 221 Kanamono : oni's head (two sets), crab, cow, and a tiger, all in *copper* with inlaid eyes, &c.
- 222 Kanamono : silver dragon and tama, signed *Kikugawa* ; *iroyé*, Tametomo and the Oni ; gilt metal dragon ; octopus, signed *Masatomo* ; dragon, Howo and Kirin. 5
- 223 Kanamono : Yojo stabbing the King's cloak ; monkeys with bell and Gohei Katsuji, signed *Shokatei Mitsuhiro* (pair) ; three silver rats. 4
- 224 Kanamono : chrysanthemum blooms in the round, silver ; basket of fish ; and another, two cranes on a pine tree 3
- 225 Kanamono : Kato Kiyomasa killing the Korean tiger ; *iroyé* Kanamono, Sotoba Komachi ; and another, a hat with a snake coiling through. 3
- 226 Kanamono : a group of fishes in high relief ; another, three Arhats wrangling over drink (two such in slightly different treatment) ; tigress and cub fording a river ; archer and girl. 5
- 227 Silver Kanamono : Chinese warrior with a spear attacking a very large snake, at back mountain landscape and a youth flying away.
- 228 Large *iroyé* Kanamono : a mask carver making a mask of Hannya, signed *Kaneyasu Masatoshi* (Seijiu).
- 229 Large Kanamono : a woman fruit-seller squatting by her basket with a child in the back of her kimono ; another catching a large dragon-fly on her shoulder, signed *Kaneyasu Masatoshi*.
- 230 Silver and *iroyé*, Tennin playing the Sho ; shakudo, Howo bird in flight.
- 231 A very large Kanamono, *iroyé*, being the court noble Hirai Yasumasa standing playing the flute (in armour with quiver and tachi), a very fine specimen, unsigned.
- 232 Twenty-three pieces of menuki and Kanamono, various metal and subjects, odd 23
- 233 Two pocket-book chains, fukiyose and lattice work : Kanamono, two sparrows dressed as samurai, standing before notice boards ; Chohi with a scroll ; Idaten ; two enamelled menuki (hawks).
- 234 Twenty-four pairs of menuki : insects, cranes, dragons, tigers, boats, Moso, masks, horses, pheasants, flowers, &c. a lot
- 235 Gold menuki, pair of dragons ; pair of tigers. 2
- 236 Gold menuki, pair of cranes, pair of flying geese, signed *Takamoto* and *Hidemune* ; single rat, and two delicate branches of plum tree in bloom. 4
- 237 Kozuka, iron, dragon, convolvulus, peony, millet, inlaid *iroyé* ; frog inlaid, signed *Yasuchika* ; Hirata enamels. 6
- 238 Kozuka, cherry trees in bloom, with menuki to match ; Niô in high relief, signed *Tokitaka* ; copper, Baku, Bugaku dancers, and mokumé. 7
- 239 Kozuka, shakudo nanako, *iroyé* in high relief, the Weaving Princess at her loom, signed *Goto Mitsu-yoshi* ; ditto, a shishi on a stand, high relief on nanako. 2
- 240 Kozuka, shakudo nanako, monkeys pulling a huge chestnut, signed *Goto Denjo* ; the Yamabushi at the Gate of the Shutendoji ; group of seven horses in various techniques ; group of Kai awasé shells. 4

- 241 Kozuka, shakudo nanako, children playing Kotoro Kotoro ; five horses, signed *Ishiguro Masayoshi* ; bamboo branch, signed *Ishiguro Masatsuné* ; silver crane and reeds, signed *Echizen no Daijo Ichinomiya Nagatsuné*. 4
- 241A Kozuka, shakudo nanako, iroyé, the Shutendoji head biting the sword of Raiko ; three arrows in an ornamented cylindrical quiver ; three aoi leaves, signed *Yoshioka Inaba no Suké* ; a saw, silver on relief 4
- 242 Kozuka, silver inlaid in relief with a girl and engraved at the back with Suzuki and Hagi design, signed *Kuwamura Genzaemon Katsuhisa* ; shibuichi and iroyé hirazogan, design of rooks on a tree, signed *Yoshinori* ; silver engraved in Kebori with Narihira at the foot of Fuji san, signed *Furukawa Jochin* ; silver inlaid with a whale, shakudo on waves. 4
- 243 Kozuka, mokumé with pine cones in the centre in relief, Kaga inlay of diapers on godrons, both imitating scabbards, Kaga inlay of vine creeper in gold and silver.
- 244 Kozuka, shakudo and Kaga inlay of Rinzu, the centre inlaid with takaramono in cloisonné enamel, signed *Hirata Harunari*, on surface perfectly striated lengthwise ; shakudo nanako, cormorant fisherman, Kaga style. 2
- 245 Kozuka, man passing through the Nara pillar, copper and iroyé, signed *Makino Haruchika* ; shibuichi, one of the Niô in very high relief, signed *Masayoshi* (seiro), aged 69 ; another of Jurojin with a scroll, signed *Hokensai Shogen*, dated Ansei, 4th year, at the age of 81.
- 246 Kozuka, Kaga inlay of butterflies and lespedza ; Ebisu going fishing, shibuichi iroyé, Daikoku at back, signed *Shojiuken Noriyuki* ; wood-cutter bringing back a faggot, signed *Jokwan*.
- 247 Pair of extraordinarily large *tsuba*, mokko with iroyé representing the Story of the Soga Brothers ; also a large guard with a Daruma in a cave, inscribed on one side, Kaneiye of Fushimi Yamashiro, and on the other, made at Nambu by Nobuiyé.
- 248 *Tsuba*, silver with gilt rim, the field engraved with waves in Owari style—for a *tachi*. 1
- 249 *Tsuba*, sentokudo and silver, puppy at the foot of a Kadomatsu, snow Daruma and kite, signed *Katsuriuken Masayoshi* (Seiro).
- 250 *Tsuba*, shakudo and gold, a series of chrysanthemum blossoms all over the guard, signed *Narita Eizui*.
- 251 *Tsuba*, shakudo, inlaid with a fukiyose of leaves and kiku, silver and gold Kaga hirazogan (Red Cross Exhibition, 1915).
- 252 *Tsuba*, mokumé all over both sides (Red Cross Exhibition, 1915). R,
- 253 *Tsuba*, shibuichi inlaid with fish and geometrical designs in cloisonné enamels in colours, signed *Hirata Tomoharu*.
- 254 *Tsuba*, shibuichi, snow crystals in Ichijo style and cloisonné enamel inlays.
- 255 *Tsuba*, copper, rimmed with brass, inlaid with small circular cartouches of cloisonné enamel, signed *Hirata Harunari*.
- 256 Pair of Guri guards, copper and shakudo, mokko shape, and fuchi-kashira to match.
- 257 *Tsuba*, sentokudo, inlaid in iroyé in high relief with a design of cranes and herbs of autumn, signed *Ishiguro Masatsuné*.
- 258 *Tsuba*, sentoku, an eagle on a rock watching a small monkey, high relief work, signed *Toshitsugu* (Juji).
- 259 Iron, nanako all over, Shoki standing and an oni running away, signed *Tetsugendo Naofusa*.

- 260 *Tsuba*, iron, pair of Hizen guards, hundred monkeys design, Akasaka guard, paulownia design, signed *Tadashigé*; marubori inro and pouch, signed *Masatoshi*, of Sakushu; dragon in high relief, signed *Hagiya Katsuhira* of Mito. 5
- 261 *Tsuba*, sentoku, monkey watching the reflection of the moon; shibuichi, Toba travelling, signed *Riuchiken Arai Hideyuki*; shibuichi, Daikoku on rice bales, his bag forming the background. 3
- 262 *Tsuba*, iron inlaid iroyé, Toba and a child; sentoku, Tenaga catching a crab; copper, octopus and flat fishes; shakudo dragons (two styles). 5
- 263 *Tsuba*, iron, chased all over with a dragon and waves, signed *Kiyoshi Inaba*; large circular, iron, dragon, signed *Kinai* of Echizen; small Mukade *tsuba*. 3
- 264 Iron, *tsuba*, ginkgo leaves; pair of carp, signed *Sadanao*; tigers and bamboo; wild geese and waves; dragons, signed *Soten*, aged 73; Lutungping and devil. 6
- 265 Iron guards, chrysanthemoid: monkeys, geese, antlers, flying geese in the rain, diaper, Sages of the bamboo grove. 6
- 266 Iron guards, openwork wistaria crest; war scene, signed *Soten*; dragon in nunomé zogan; Chinese sages in relief, signed *Soten*; Susano no Mikoto marubori; chidori above a stream in iroyé. 6
- 267 Iron guards, omoto plant, signed *Kaneshige* of Sekishu; Yamato Dake killing the Kumaso, signed *Shiho*, aged 69. 2
- 268 Iron, an old board around which winds a snake catching a sparrow, high relief, inscribed *Otsuriuken Miboku*, and dated Kwansei 3, in mid-spring, on gold tanzaku.
- 269 Iron, *tsuba*, pair of fukiyosé design, bamboo, rat on gomamé, octopus and shells, signed *Masamitsu* of Inaba; silver cranes and lotus, signed *Ishiguro Masayoshi*.

SWORDS.

- 270 Wakizashi Bizen blade, with long boshi, reduced back, long wave yakiba, signed *Kaneshigé*, the fittings Aizu and Umetada work; the blade with saw back, unsigned; tanto, old Kyôto blade, signed *Nobusada*, with Umetada fittings. 1
- 271 A very heavy short sword with invocation to the San ju ban jin on the blade, apparently a wrestler's sword with copper fittings and Kaneiye-esque guard; gardener's knife with scabbard, decorated in ivory and lacquer; Aiguchi shaped scabbard, containing a pistol, inscribed *Matsudaira Iya no Kami*. 3
- 272 Wakizashi, good old blade, signed *Osafuné Kuninobu* with good grain, *tanzaku mei*, cut down, small fittings, herbs of autumn, signed *Iyetsugu* (Keji), Kozuka and Kagai; the sages in the bamboo grove, signed *Hamano Noriyuki*.
- 273 Pair of swords, Daisho, signed *Chikuzen no Kuri Tadayoshi*, dated Keicho 8, Aizu fittings, and Hizen no kuni Fujiwara no Tadahiro, samé nuri scabbard.
- 274 Short sword, signed Yamato no Daijo Fujiwara *Masanori*, Aizu fittings, samé nuri scabbard, and a sham tanto with large guard, enclosing a pistol, inscribed *Takeda Iyo no Kami*.
- 274A A fine Katana with Fudo horimono, and ken, regular narrow yakiba, signed *Bukan no Daijo Fujiwara Tadahiro*; further inscribed, "Carved by Umetada, Miojin's grandson, at the age of 71."

- 275 Short katana, signed *Shichizaemon Sukesada* of Osafuné Bizen, dated Kwambun 6th, with Nineteenth Century mounts of shibuichi, chased as dragons and waves, signed *Ichijiu* and *Masafusa* respectively, the scabbard lacquered with a dragon in takamakiyé.
- 275A Wakizashi, large long wave, irregular yakiba, with moi and fukuré, engraved with a banner of Hachiman Daijin, and on the other side the Oniwaka-Benkei fight, signed Bingo no Kami Hokanji Tachibana *Yoshitsugu*.
- 276 Katana, fine blade with bold yakiba, signed Kawachi no Kami *Kunisuke*; shibuichi fittings with herbs of autumn and dragon-flies, signed *Toó* (Momo-O), circa 1850, the silver Kozuka, signed *Renkai* of Kii, lespedeza and boar engraved.
- 276A Wakizashi with nok giri yakiba, shibuichi fittings, Kagoya waves with Katawa guruma inlaid, and descriptive poems engraved at back, signed *Omori Mitsunobu*.
- 277 Tanto, with Fudo Horimono and Bonji, attributed to Kiyomitsu of Osafuné Bizen, fittings in niello style, the scabbard gold togidashi design of mitsu aoi karakusa. 1
- 277A Katana, irregular yakiba, signed *Kawachi no Kami Kunisuké*, and *Iyo no Kami Kuniteru*, dragon horimono.
- 278 Aiguchi, small blade with Nineteenth Century fittings, Howo birds on shibuichi; Kozuka mounted in a black scabbard with mitsu aoi crests inlaid, and a Kwaiken, signed *Kanemoto*.
- 279 Aiguichi, signed *Soshu no Jiu Hiromitsu*, Nineteenth Century shibuichi fittings with decoration of flowers of the four seasons in relief, tombo and iris repeated on scabbard.
- 280 A Ken, signed *Gwassan*; tanto with openwork amaku kara horimono, signed Nishijin no Jui *Umetada Kanjin*, aged 73.
- 281 Small curved knife in lacquered scabbard, with silver fittings.
- 282 Small Kwaiken, signature cut down, in tsuishu lacquer scabbard: Kojima Tahanori under the cherry tree carved in relief, pretty piece.
- 283 Two models of Tachi (for dolls).
- 284 A gardener's knife, Luchuan knife, and a broad short blade mounted in a bean-shaped scabbard, also two spear heads. 5
- 285 A lot of six Jitte in lacquered wooden scabbards. 6
- 286 A pistol in a wooden scabbard decorated with dragons, and a metal Jitte imitating a sword, with braided handle (scarce). 2
- 287 Four Bokuto (wooden swords); Ashinaga, Sennin and flying geese, signed *Tenshodo Mimpu*; bean, made by *Suihaku Hakuyo* by request, in Bunkiu period. 4
- 288 A lot of Bokuto, one combined with a pen case, dragons and bamboo.
- 289 Three Bokuto imitating a sword with lacquer design, asanoha diaper and carved dragon. 3
- 290 Half-inch bore, short portable matchlock, signed *Oshu Masatsugu*, decorated with dragons in nunomé zogan of gold and silver, fine specimen. 1
- 291 Matchlock pistol with dragon inlaid, a spear and an iron hook and sword-catcher combined. 3

METAL WORK, VARIA—BRONZE.

- 292 Bronze cock on drum koro, the crowing rooster forming the lid.
- 293 Bronze vase with slender neck, two tortoisés on the body. 1
- 294 Bronze Okimono, a kingfisher poised on a lotus leaf watching a frog.
- 295 Pair of Sentoku Koro, each shaped as a wild goose.
- 296 Pair of figures of the Deva Kings Ni O, well modelled, and signed *Kosai*.
- 297 A beautiful Sentoku figure of Kwannon on lotus pedestal, 35in. high
- 298 Another well-modelled figure of Kwannon, Sentoku bronze, 25in. high, with inlaid jewels on the breast.
- 299 A water-holder shaped as a bronze top for a bridge post with usual Shoho inscription, and a long spout fitted in the side.
- 300 Pair of important Koro, a bronze inlaid in iroyé with fishermen, Urashima Taro, Kanshin, a poet and quails amongst grasses, Chinese boy as a knob on the top, sentoku lining.
- 301 Fine beaten iron model of a Japanese house, with movable shutters.
- 302 A smaller model of a Japanese house, also in beaten iron.
- 303 Fine model of a hawk with articulated neck and wings, niguromé with shakudo spots. PLATE XVI.
- 304 Well-modelled beaten iron heron poised on one leg, signed *Yoshinobu*, 13½in. high. PLATE XVI.
- 305 Articulated model of a langouste, 23in. when fully extended. PLATE XVI.
- 306 Beaten iron model of a snipe, signed *Miochin Munesuké*. PLATE XVI.
- 307 Small articulated model of a shachi (grampus), inscribed "made in the 18th year of Keicho, by Miochin ki no Sakiodaiyu Iyehisa. PLATE XVI.
- 308 Model of a crayfish, 15in. long when extended, signed *Miochin —iye* (one character damaged, probably Nobu). PLATE XVI.
- 309 A small articulated iron dragon, 17in. long, signed *Munekazu*. PLATE XVI.
- 310 A remarkable large dragon of beaten and articulated iron, signed *Munekazu*, about six feet when extended, together with stand on which rests a crystal ball. PLATE XIII.
- 311 A very fine and large snake of articulated iron, over 10ft. long, signed *Miochin*. Exhibited at the Red Cross Loan Exhibition, 1915. R,
- 312 An articulated iron snake, 6ft. long, signed *Munekazu*.
- 313 A grampus of beaten iron with gilt eyes and ball in the mouth.
- 314 Two bronze tortoisés, a small one on top of the other, signed *Seimin*.
- 315 Okimono, Mount Horai, a wave-swept rock of bronze on which are placed silver and shakudo cranes, a minogamé, &c., decorative piece.
- 316 Large silver Koro with burner on gimbals, openwork design of flowers and birds.
- 317 A very fine rolling Kogo of silver, Karakusa design in openwork, with circular floral patterns picked in cloisonné enamels. (Red Cross Loan Exhibition, 1915). PLATE XVIII.

- 318 Koro of shibuichi and silver, decorated in high relief iroyé with the Story of Awote Sayemon, and that of a poet dreaming of Kwannon, beautiful modelling, signed *Motonobu*, and the cartouches surrounded by a mass of blossoms. PLATE XVIII.
- 319 Chinese altar vase, heavy bronze, 16in. high, with Kwei pattern in relief. 1
- 320 Pair of vases, sentoku inlaid iroyé in flat and in high relief, with Ushidoji cat, flowers, dragons, &c., signed *Takaoka Kanemori Muneshichi saku*, 19½in. high. 2
- 321 A pair of bronze vases inlaid with panels of the Rakan in high relief, signed *Bijin*, 17in. high. 2
- 322 Pair of cast iron bronzes, 3ft. 8in. high, with a dragon on green bronze coiled round each. 2
- 323 Pair of squat vases, 27in. diameter, 21in. high, decorated in very high relief with carp and waves. 2
- 324 Handsome plaque of beaten iron, representing Jurojin holding a crystal ball, the details inlaid metals, in a frame of Tsuikoku lacquer with design of cranes and clouds in black over red-green, just over 3ft. in diameter. PLATE XVII.
- 325 Large plaque of iron overlaid with a figure of a Shojo playing with a minogamé; in very high relief, iron and copper, 2ft. 10in. over all, powerful piece of modelling, full of expression, signed *Hitotsuyanagu Tomotoshi (naga)*. PLATE XVII.
- 326 A unique plaque of Komai inlay, representing the God of Literature standing on a dragon, accompanied by Bunshosei holding his inkstone—the ground covered with a minute diaper of gold patterns in nunomé, 19in. diameter. PLATE VI.
- 327 A decorative plaque, 26in. in diameter, iron, inlaid with sparrows and hydrangeas in iroyé of various colours in high relief.
- 328 Bronze mirror, 18in. in diameter, signed *Tanaka Iga no Kami Yoshitsugu*, decorated with hanabishi and manji crest, in good condition with original lacquered box, decorated with chrysanthemum hedge.
- 329 A smaller mirror with Namu Amida Butsu inscription, in lacquer box.
- 330 A mirror with Horai design, signed *Nishimura Bungo no Jo Fujiwara Masashige*, with a carved box in Chinese style.
- 331 Oblong mirror, about 20 by 13½ins., dragon in relief, signed *Tenkaichi Inaba no Kami Fujiwara Yoshinobu*.
- 332 Iron plaque, beaten, chased and inlaid as a landscape in which monkeys sit on a rock near a house, signed "Made to order by Kashu no Jiu ki no Yoshihisa."
- 333 Bronze okimono, an Aino hunter carrying a dead heron and a fish, well modelled piece.
- 334 A Bunko and a suzuribako of beaten iron, both decorated with Karashishi in relief. 2
- 335 An iron suzuribako decorated in repoussé in high relief, with a wild boar in full stride.
- 336 Bronze figure, a warrior standing, with staff in hand, double tomoyé crest.
- 337 Bronze Kongara Doji and Seitaka Doji, attendants of Fudo.
- 338 Bronze Takarabuné with the Gods of Luck and the Takaramono.
- 339 A very large bronze gong, 2ft. 4in. diameter, on red lacquered stand, 5ft. high over all; *one of the largest in existence*.
- 340 A bronze bell, 18½in. high, with date in relief, Genwa, fifth year, third month.
- 341 Large bronze temple gong (wampan), 29in. across.

- 342 A fine and large incense burner, shaped as a Howo bird, 3ft. long, 27in. high, bronze inlaid with silver wire and gold damascene in Chinese fashion.
- 343 Iron hanaiké in the shape of a cucumber, four feet long with flowers and leaves, around which twines a snake, and upon which rest sparrows and insects, iroyé work, signed *Shoami Katsuyoshi* with usual pedigree, "ninth generation from Shoami Michimori, &c." 1
- 344 Another of bronze, slightly longer, with snake, snail, mouse, &c., similar signature and inscription. 1
- 345 Handsome four-leaf screen, decorated with the Sixteen Rakan, in high relief lacquer and metal work in various colours, on black lacquer background with red frame.
- 346 The San Sukumi, snake, frog, stag on a rock covered with creeper.
- 347 Bronze vase illustrating the story of Shiba Onko, signed Chumin *Munesada*.
- 348 Silver and silver-gilt okimono, a Howo bird standing on a rock on which grow peonies in the middle of a stream, handsome specimen, signed *Kwantei*.
- 349 Bronze figure of Yoshitsuné, seated.
- 350 Set of silver toys set as an altar with offerings emblematic of longevity, crystal balls, Horai minogamé, &c., on a chair-like stand.
- 351 Silver Koro inlaid in iroyé with cocks, hens, chicks, &c., in iroyé, the knob a cock amongst chrysanthemum.
- 352 Two cranes, silver and shakudo, and a dragon, of shibuichi, carrying a ball in his claw.
- 353 A toy choji buro of shibuichi, Kogo for it, Kogo shaped as a plum branch, stand with three balls, cup and stand, in varieties of shibuichi and silvered metal. a lot
- 354 Ten bronze mizuiré, various designs. 10
- 355 Cast iron kettle, "Bumbuku chagama," and another imitating a wall. 2
- 356 Cast iron kettles, imitating charcoal, and a wall with creepers respectively. 2
- 357 Cast iron kettle, the lucky bag of the Takaramono, and another of plain beaten brass. 2
- 358 Hiroshima kettle with dragon design beaten in relief, and another with Karakusa and mitsu aoi engraved. 2
- 359 Large bronze kettle with engraved lotus design and dragon spout. 1
- 360 Plain bronze kettle, shaped as a fruit; another, shaped as a lotus leaf; and another, gourd shape 3
- 361 Two oil vessels with long spouts, silvered metal and repoussé brass with dragons, and two oil pots in Korean style.
- 362 Bronze flower vase, shaped as a tako tsubo, and a mizuiré shaped as a dragon on a rock. 2
- 363 Beaten iron shrine with a gilt-bronze figure of Kwannon holding a bottle, *added later*, and a small sharito of gilt-bronze (A.F.) 2
- 364 Paperweight in the shape of two Karashishi, mother and young, signed *Yuriuken Hidetomo*. 1
- 365 Two incense burners shaped as lotus leaves and fruit, copper and bronze. 2
- 366 Another, of Sentoku bronze, shaped as a lotus flower. 1
- 367 A silver box engraved with pine trees, the lid with Gama and Tekkai Sennin in high relief, chased shibuichi. 1

- 368 Beaten iron lotus censer, and two others of bronze. 3
- 369 Another, lotus censer, champlevé enamel, and one of bronze. 2
- 370 Bronze wumpan with frame, and two pricket candlesticks, mantis and lotus, and two unmounted wumpan 5
- 371 Gilt-bronze lotus censer; another, shaped as a Kamo no Keiba hat, with mantis; two small table-shaped stands, one signed *Natsuo*, the other a cast bronze landscape.
- 372 Sentoku Hibachi, bronze Koro, Chinese style, iron cavalry dipper. 3
- 373 Hanging bronze Koro, a bird on a perch, champlevé enamel, and a brass bottle with figures of Daruma and Hotei. 2
- 374 A Hiroshima jardinière, 15½ in. diameter, with dragon design inlaid. 1
- 375 An ash tray, three shakujo heads, two dragon-flies or other insects, an elephant shaped box, &c. *a lot*
- 376 Small bronze kettle, and a dozen sentoku ash trays. 13
- 377 A very fine altar set of cloisonné enamel vessels, Koro, pair of square baluster vases, and pair of candlesticks, decorated with kwei heads, animals, &c., in the five colours. *a set*
- 378 A pair of musen enamel vases with Fuji landscape above the clouds. 2
- 379 Two fan-shaped plates, cherry blossom design, one in musen, the other in cloisonné enamels. 2
- 380 Cloisonné vase, blue transparent enamel over engraved ground, goldfish in a river under wistaria in bloom.
- 381 A bowl of similar work with design of fans and dragons over engraved white metal.
- 382 Decorative cloisonné vase, Ebisu catching a red bream, rich scheme of colours.
- 383 Another vase, ovoid shape with two peacocks near rapids, very rich decoration in translucent enamels, very fine vase by *Hayashi*, blue-black ground with butterflies in cloisonné.
- 384 Pair of millefleurs vases with a number of geese in a pond, polychrome on dark blue ground, and a small vase, light blue with carp in musen work (*Namikawa*).
- 385 Small Koro and single flower vase, both with chidori above waves, and a narrow-mouth vase with engraving of flowers of autumn below enamel.
- 386 Pair of so-called sugar jars, cloisonné on porcelain, turquoise-blue with panels of flowers.
- 387 A bronze holder for flower arrangement in the shape of a toad, the breath of which forms the flower bowl.
- 388 A pair of votive temple bronze lanterns, with tall stands, inscribed with names of givers, &c., Yoshi i machi Hagiwara Kuyemon Harutaka, &c., &c.
- 389 Two carved wood figures of Rakans, both seated and without attributes.
- 390 Pair of stands for Buddha figures, each being a reclining figure carrying a lotus pedestal on the back, carved wood, polychrome painting.
- 391 Standing figure of Varuna with the Dokko black wood carving. 1
- 392 Carved wood figure of one of the Regents of Hell, seated, no attribute. 1
- 393 Carved Kokutan frame for a tsuitate, size of opening, 16½ by 17½ in. 1

- 394 Figures of Kongara and Seitaka, carved and painted wood, old, without attributes. 2
- 395 Standing figure of Agni with the bow, carved wood with polychrome decoration. 1
- 396 Raiden and Futen, Gods of Thunder and Wind, respectively, carved wood lacquered red. 2
- 397 Carved wood figure of Daruma holding a scroll, lacquered in colours. 1
- 398 The Ni O, carved wood figures with traces of paint (A.F.). 2
- 399 Carved and painted wood figure of a foreigner with a Ken 1
- 400 Carved wood figure of Shoki killing an oni. 1

End of 2^d day

POUCHES, PIPES, PIPE CASES, ETC.

- 401 A very varied, comprehensive collection of Japanese cash coins, e-sen charms, paper notes, a few Chinese coins and charms, &c., in four boxes and a bundle. *a lot*
- 402 A collection illustrating the gold and silver coinage of Japan, in lacquered box, specially made and divided; an interesting lot. 1
- 403 Specimen of Chinese knife money and other coins, five pieces in a box.
- 404 A lot of writing brushes in carved wood, lacquered red; an ivory yataté with lacquered netsuké; another with ink box, two of bamboo, two of brass, one cloisonné enamel. 12
- 405 Yataté, wood, shaped as a fan, one shaped as a swan, and several others, various materials and shapes. 12
- 406 Twelve metal yataté, various, several gourd shape, and others with toggle ink pots. 12
- 407 Four yataté of wood, carved, lacquered, one with aogai and silver inlay; another of Guri lacquer, and a Korean brush with aogai inlay. 6
- 408 Five yataté of silver, shibuichi and bronze, engraved and inlaid, and another in the shape of a straw bale.
- 409 Very large Eighteenth Century pouch, a specimen of old embossed leather, with silver Kanamono of Chinaman hulling rice; big manju, quails and rice.
- 410 A large pouch with silver Kanamono of shells in openwork, old silver pipe, big manju, fukiyosé design, and as an ojimé, a fine skull around which twines a snake. 1
- 411 Pouch of leather with very fine Kanamono and ojimé, representing Raijin in a storm, engraved back plate, signed *Shigeyoshi*, the Kagami buta being the head of one of the Nio with a bird's nest in the mouth.
- 412 A curious pouch of leather, stamped with conventional floral design gilt, the Kanamono a dragon in silver, the manju carved wood lacquered red, with silver dragon centre. 1
- 413 A very fine pouch of knotted embroidery, with beautiful Kanamono of bronze iroyé, the Nio playing Yubizumo, the Kagami buta one of the Nara Niô with a sparrow in the mouth, silver and iroyé, signed *Yoshinori*.

- 414 Fine large pouch, similar material, the Kanamono a dragon ascending Fuji, at back Choryo and Kosekiko, signed *Yoshinori* in sosho, the Kagami buta being Hankwai with the door under her arm, fine work, signed *Ichiriusai Toshimitsu* (Riko), the ojimé being Yoritomo watching the cranes, heavy silver charm.
- 415 A pouch of seal hide with silver Kanamono of peonies, the manju being peacock and peonies in relief and openwork iroyé, the ojimé carp amongst the waves. 1
- 416 An extremely uncommon specimen of pouch covered with *samé* (ray skin), the Kanamono being Shoji fighting, and the netsuké a piece of narwhal horn (Ikkaku).
- 417 A purse of old brocade with peony Kanamono, the Kagami buta Shochikubai after a design of the Korin School; and another with fittings of iron and niguromé in Namban style with enamels. 2
- 418 Tonkotsu wood, a metal tortoise, reeds and the moon (tsuki ni suppon), the pipe-case a very good specimen of the Hundred Poets engraved on bamboo.
- 419 Tonkotsu wood, with Sennin in panels in relief; another, bone, with insects lacquered on; another, of halotis shell with Colombo diver netsuké.
- 420 Tonkotsu, made of lacquered tree fungus, with a *samé* pipe case, the ojimé Reishi and bat; another, pouch of leather with ear picks, plain ivory manju.
- 421 Yataté, the ink palette of wood, the brush case bamboo carved with Ebisu, signed *Ikko* (Kazutora); and an ovoid tonkotsu in decorated lacquer with gold and colour karakusa, three-leaf crest on sides; pottery netsuké, a frog. 2
- 422 Tonkotsu of bamboo, engraved with a Chinese poem, the pipe case with flowers, signed *Ranseki*; another of plaited bamboo. 2
- 423 Tonkotsu of wood with lacquered design of Shoki and Oni in takamakiyé style of Tatsuki Kôkiô; and another with chidori and waves in aogai and lacquer, both with pipe cases. 2
- 424 Lacquered tonkotsu, tsubo shape, with banana tree design; another, in the shape of Hotei and his bag; another, snail with long inscription and iron spring hanger.
- 425 Wooden tonkotsu, a frog, the netsuké a frog massaging a man (uncommon); another, with a rabbit, intaglio, signed *Miwa*, with rat on rope, ivory netsuké; another, *Shitadachi Daruma*. 3
- 426 Tonkotsu of wood, inlaid in Shibayama with convolvulus in various colours, the pipe case with carp in the waterfall, same technique, signed *Ikko* (Kazutora).
- 427 Ivory and Shibayama pipe case, cock and hen; ivory pipe case, dragon and tiger. 2
- 428 Ivory pipe case, a number of Apsara and a child in low relief, signed *Hogioku*. PLATE XVIII.
- 429 Ivory pipe case, inlaid in gold with the elders of Takasago under the pine tree, signed *Riumin* and *Omin*.
- 430 Pipe case, carved lacquer, the Story of Ota Dokan. (Red Cross Exhibition, 1915). PLATE XVIII.
- 431 Ivory pipe case, the Seven Gods of Luck, intaglio work. PLATE XVIII.
- 432 A silver pipe case, the rats' fire brigade, in high relief and iroyé hirazogan, signed *Yoshinori*. (Red Cross Exhibition, 1915). PLATE XVIII.
- 433 A silver pipe inlaid with gourd vines in shakudo and gold hirazogan. (Red Cross Exhibition, 1915.) PLATE XVIII.
- 434 Silver pipe, decorated with wild geese and reeds in gold shakudo hirazogan. (Red Cross Exhibition, 1915). PLATE XVIII.

- 435 Silver pipe, nanako inlaid with crows in shakudo ; and two others, decorated with bamboo in relief and iroyé. 3
- 436 Large pipe, bronze inlaid with peonies and butterflies, iroyé in high relief, signed *Matsu O.*
- 437 Pipe, decorated with the Story of Matana no Goro and Sanada Yoichi ; another of silver with mille-fleurs in relief ; and another with Howo and paulownia. 3
- 438 Six pipes with long stems (for women), various styles and techniques.
- 439 Three wrestlers' pipes, short big barrel with heavy mouthpiece and bowl, one decorated with insects in relief ; and four pipe cases, stag's horn and bamboo. 7
- 440 A pipe, shaped as a dragon, chased shibuichi, signed *Yoshinori.* 1
- 441 Pipes : ichimatsu of silver and shakudo, of Ajiro work, brass with eagle and monkey, brass with plaited stem .4
- 442 Ten pipes, various styles and decoration. 10
- 443 A large silver pipe, dragon and tama in the waves, iroyé inlay, signed *Kikugawa*, 18in. long. 1
- 444 Pipe cases : carved bamboo, Sennin ; boys at play, signed *Giokuyei* ; chrysanthemum, signed *Ikko* 10
Jurojin, &c.
- 445 Pipe case, Shibayama design of birds, fire-fly and peonies ; another with Shishimai dancers ; another with Shishi and peony, signed *Ikko.* 3
- 446 Bamboo pipe case, the Rokkasen, signed *Giokkushi* ; another with Ushidoji ; one of plaited work ; the other ditto, but lacquered over. 4
- 447 Bamboo pipe case, Komei, stag's horn, and varia. 7
- 448 Ivory pipe case, flowers of autumn in relief, signed *Riumu.* (Red Cross Exhibition, 1915). 1
- 449 Pipe case, the San Sukumi inlaid in relief, signed *Ikko* ; another with snails and vine, same maker ; another with bird on chrysanthemum. 3
- 450 Flute case and flutes, togidashi of dragon and clouds on black ground ; and another with cranes and reeds in gold takamakiyé. 2
- 451 Three flutes of various sizes ; a powder flask with octopus in red takamakiyé ; a large powder flask of leather ; and another, smaller, &c.
- 257- 452 A Me-tsubushi eye-destroyer, and a powder flask with Shibayama netsuké of Kiyohime and tsuishu decoration. 2
- 453 A collection of powder horns, some lacquered. 10
- 454 Another lot of powder horns, ivory, wood, &c. (one broken). 14
- 455 A string of ojime, metal, mokume enamels, etc.
- 456 A string of lacquer ojime in various styles, carved, etc., chiefly floral designs.
- 457 A string of lacquer and ivory ojime, variously carved.
- 458 A string of ojime, ivory, all decorated in Shibayama inlay and lacquer.
- 458A Another string, also of Shibayama and lacquer on ivory.
- 459 A jade vase, shaped as a large lotus leaf with crane, birds, &c., with stand. 1

- 460 A small cabinet, suitable for netsuké, kanamono, &c., decorated all over with Chinese scenes and landscape in mother-of-pearl inlay. 1
- 461 Kozuka jubako, another box of red Kamakura bori, and a small flat lacquered box for kozuka. 3
- 462 A bronze gong to carry on the chest (Shogo), dated Kwambun, 11th year. 1
- 463 A pair of temple gongs of wood (mokugyo), lacquered red and gold. 2
- 464 An Ema of wood, representing two dragons about Fuji san, the animals in relief and in the round. 1
- 465 A pair of six-fold screens, decorated with a number of fans in colours on gold ground, chiefly floral designs. 2
- 466 A pair of screens, Kano School, each decorated with a number of cranes, white, black and red on gold background (six folds). 2

TEXTILES.

- 467 An embroidered screen of four leaves, decorated with birds and an iris pond on one side, and on the other with views of Nikko, Kasuga, Yasaka, Kamo, temples, all in needlework in colours; a beautiful specimen 1
- 468 Three makimono, court life and Story of the Shutendoji (in a set). 3
- 469 Two large rolls of mushaye mounted as makimono. 2
- 470 Kakemono, view of Fuji, narrow Chanoyu size. PLATE XIX.
- 471 Set of three Kakemono—Jurojin with the stag, and the others the crane, plum and bamboo, signed *Tosa Mitsufusa*. 1
- 472 Kakemono, cranes in flight above the sea, a charming painting.
- 473 A very fine picture of a girl playing the Koto, signed *Y. Yamamoto*. PLATE XIX.
- 474 Kakemono, a family of monkeys, dated Meiji 15, 9th month, signed *Riokura*.
- 475 Fine large Kakemono, Sumiyé hawk pouncing on a crane.
- 476 Kakemono, monkeys, signed *Riowa* (a pair), and a large Kakemono, three Bugaku musicians with big drum.
- 477 Fukusa, Hana guruma, filled with peonies, gold and colour on pale blue silk.
- 478 Fukusa, a hawk on a stand, part embroidery, part painting, pretty specimen. 1
- 479 Painted Fukusa, two Shojo and a wine jar; another, embroidered with a crane in pine tree. 2
- 480 Fukusa, the Takaramono; another of the Yoro no Taki subject.
- 481 Tapestry fukusa, three shells for the shell game; and another embroidered with a fan with Kiri badge. 2
- 482 Fukusa, white crane and pine tree, gold on blue ground; another with Kinko Sennin on the carp. 2
- 483 Fukusa, carp and waves, red and gold on blue ground; another, of ise ebi and shells on blue ground. 2
- 484 Fukusa, Ushidoji on the bull; another, a hawk on a perch, both on blue ground.

- 485 Tapestry fukusa, a number of fans on buff ground ; another, Urashima Taro on the minogamé.
- 486 Fukusa, design of Kai oké in gold and colour on blue ground ; Hakura Kutan in the boat, meeting a fisherman (well-known story).
- 487 Fukusa, poet seated admiring the plum blossoms ; and another, three cranes on blue ground. 2
- 488 Fukusa, Onono Komachi with a long poem. 1
- 489 Tapestry fukusa, cock, hen and chicks in colours on blue ground. 1
- 490 Fukusa, Shojo and sakazuki, gold and colours on red ground, bundles of leaves forming the Shochiku fan, gold on blue ground. 2
- 491 Embroidered panel, a dragon amongst clouds in high relief with mitsu aoi badge, 6ft. by 4ft.
- 492 Shichijo Kesa, gold brocade with Howo birds and flowers on whiteish silk ground, about 4ft. wide by 7ft. long.
- 493 Shichijo Kesa, same size, red brocade with Howo birds in colours and gold.
- 494 No isho with Howo birds and rafts in coloured embroidery and brocade on gold broché ground. 1
- 495 A gorgeous shichijokesa, very elaborate design of wild pinks in many colours and gold brocade with the stole. 2
- 496 Short coat, No isho shape with cranes and chrysanthemum decoration in gold brocade, cream ground.
- 497 A black fukusa with dragon embroidered in gold ; and another, red silk, with pine tree embroidered. 2
- 498 Fukusa, minogamé in gold on blue ground ; another, with Kai oké in gold and colour, also on blue ground. 2
- 499 Tapestry fukusa, longevity designs on buff silk ; another, minogamé in gold and colour on salmon ground. 2
- 500 Painted fukusa, cranes and pine tree on grey ground ; another, embroidered Abura Bozu design in gold on blue.
- 501 Takarabuné in gold and colours on blue ground, and another of manzai dancers.
- 502 Fukusa, Shojo dancing, gold and colours on blue silk ; and another of playing cards. 2
- 503 Embroidered frieze, two dragons and a tama in gold embroidery highly raised on red ground, the claws ivory, amongst black clouds, black border and hangings, 4½ yards long, 34in. over all depth.
- 504 Another, similar treatment of dragons and tigers with glass eyes, 4½ yards long, 33in. over all, very decorative. 1
- 505 Shichijo Kesa, of red and gold brocade with aoi badge, Namu Amidabutsu all over the back. 1
- 506 Pair of large embroidery hangings (portière), 2½ yards by 39in. wide, with dragons rising out of the water, also clouds in various colours on pink ground, brocade border, fine set with headpiece in chrysanthemum design. 3
- 507 A very handsome hanging, a peacock over a waterfall beneath a tree on which are sparrows, 5ft. 9in. high by 55in. wide with embroidered designs on silk back. PLATE XX.
- 508 Large Shichijokesa with chrysanthemums and flowers of autumn in colour on gold brocade, 2½ yards long.

509 A piece of gold brocade, $1\frac{1}{2}$ yards square, embroidered with the Takaramono and floral scrolls, very fine specimen.

510 A very fine hanging tapestry, 7ft. long by 5ft. wide, cranes in a pool at the foot of a bamboo grove.

PLATE XX.

FURNITURE.

511 Six-leaf screen, painted on gold ground with a Sumiyé design of pine trees, birds in flight and daffodils, each leaf 5ft. 8in. by 24in.

512 Four-leaf screen, the lacquered framework decorated with gold lacquered Karakusa, metal fittings with mitsu aoi badge with panels of openwork gilt wood in design of birds, bamboo, auspicious plants and flowers, geese and reeds, Howo birds, &c., inserted in, 5ft. 9in. by 24in. each leaf.

513 Another four-leaf screen, 5ft. 9in. by 24in. each leaf, panelled with openwork conventional pomegranate and birds in gilt carved wood, inserted in a lacquered framework with Karakusa and metal work with mitsu aoi badge similar to the above.

514 Pair of Chinese stands, inlaid in mother-of-pearl with garden seats on black lacquer ground, fan shape, 14in. high.

515 Another, 18in. by 14 over all, by 17in. high, the reduced oblong top inlaid with Chinese sages in a lake garden.

516 Another, mokko shape, 16in. high, about 14in. long, with children admiring a kakemono.

517 Another, with garden scene in relief on top and base, 14in. square with scalloped sides.

518 Another, with sages inlaid aogai on black lacquer, 15in. high by 14in. long by 12in. wide over all.

519 Pair of stands, $35\frac{1}{2}$ in. high with hexagonal top inlaid marble, the four legs, &c., nicely carved with plum blossoms design.

520 A legless Chinese temple chair, dark wood, square seat.

521 A pair of temple chairs, Chinese style, in light coloured wood, with scroll-work square seats.

522 Tall table stand, 36in. high, 27in. long, and 12in. wide, with carved tinted and fretwork all round. 1

523 A similar stand, slightly damaged fretwork. 1

524 A low table stand of Kokutan wood, 3ft. 1in. long, 18in. wide, 17in. high, the legs and sides carved with flowers and waves.

525 An elegant stand, 24in. high, with square box and top, circular shelf with carved sides in middle, 9in. wide.

526 A very pretty stand with box shelf and top, slender and elegant, the sides carved and decorated with openwork ivory scroll-work, 26in. high by 16in. by 12in.

527 Low square table stand, 25in. square, $24\frac{1}{2}$ in. high, carved with dragons and clouds in relief, birds and fretwork on legs; fine piece. 1

528 Truncated pyramidal clock stand, 3ft. 2in. high, the four sides decorated with mother-of-pearl inlay of flowers and inscription, the base $21\frac{1}{2}$ in. square.

529 Small black wood stand with carved plinth, $10\frac{1}{2}$ by 13 by 24in. high.

- 530 Oblong table stand, 28in. high by 19 by 13in., with dragons and fretwork on sides.
- 531 Square Shitan stand, 2ft. 9in. high, 17in. wide over all, carved with dragons and clouds in high relief.
- 532 Carved black wood table stand, with dragons and clouds, 2ft. 6in. by 2ft. 7in. high by 28in. wide over all (18in. top). 1
- 534 A temple chair, red lacquered with gold details and brass plates as usual.
- 535 A temple chair, black lacquered with gold details.
- 536 A carved black wood cabinet, 3ft. 2in. wide by 15in. deep by 6ft. high, with eight shelves and one cupboard, carved all over with auspicious flowers, sages, &c., in relief.
- 537 A show case of bass wood stained black, 6ft. 10in. high, about 14in. deep, and 7ft. 9in. over all, over cornices, each with three plate-glass doors, fitted shelving and red plush lining.
- 538 A similar lot.
- 539 A similar lot.
- 540 A similar lot.
- 541 A similar lot.
- 542 A similar lot.
- 543 A similar lot.
- 544 A similar lot.
- 545 A showcase, glazed on three sides, bass wood stained black with metal rocks and plate-glass shelves, 2ft. 9in. wide, by 2ft. 3in. deep, and 6ft. 6in. high.
- 546 A similar lot
- 547 Another similar lot.
- 548 A double-fronted showcase, plate-glass front and back with three doors, three plush-lined shelves, overall dimensions 6ft. 10in. high by 28in. deep, and 7ft. 9in. long.
- 550 A very large case, 36in. deep over all, same height, and with three plate-glass doors fitted with one shelf only, lined plush inside.
- 551 A showcase, 21in. deep, 6ft. 10in. high, and 7ft. 9in. wide, with three plate-glass doors, three shelves inside, two of which are stepped for small objects ; no plush lining. 1

BOOKS.

- 552 OSBORNE, Japanese Fragments ; FONBLANQUE, Nippon and Pechili ; and GOLOWNIN's Narrative.
- 553 WAGGAMAN, Collection ; ASTON, Japanese Literature ; HUISE, Japan ; *Chushingura*, Child Life in Japan, &c. 10 vols.
- 554 LOWELL, Occult Japan, *Noto* ; RANSOM, Japan in Transition ; BACON, Women and Girls, and others similar. 8 vols.

- 555 GRIFFIS, Mikado's Empire ; ADAMS, History of Japan ; REED, Japan. 5 vols.
- 556 PERRY's Expedition (Hawk) ; ALCOCK, Capital of the Taicoon ; GRIFFIS, Perry ; BIRD, Unbeaten Tracks (4th edition). 5 vols.
- 557 DRESSER, Japan ; MORSE, Japanese Homes ; ARNOLD, Japonica.
- 558 An album of coloured photographs of Japanese scenes, various, 16in. by 11½in.
- 559 Another ditto, uniform binding.
- 560 Another ditto, uniform binding.
- 561 Another ditto, uniform binding.
- 562 Another ditto, uniform binding.
- 563 Another ditto, uniform binding.
- 564 A large album of views of Miyajima temples.
- 565 An album of coloured photographs, whole-plate size, in lacquered covers.
- 566 Another ditto.
- 567 HAYASHI, Collection, Vol. I. only.
- 568 Catalogue of the BING Collection.
- 569 Collection, CH. GILLOT, 2 vols..
- 570 Catalogues of Collections : BOWES, DUPARC, GOSO, SUMINOKURA, &c. 7 vols.
- 571 TAJIMA, Selected Relics of Japanese Art ; SHIMBEI TEIKAN, *four volumes only* (I. to IV.).
- 572 JAPAN SOCIETY TRANSACTIONS, first four vols. bound in cloth, others as issued, I. to XIV. inclusive with supplements (NIHONGI, Catalogue of Arms and Armour, &c.).
- 573 M. TOMKINSON, A Japanese Collection, 1898.
- 574 GONSE, Art Japonais, two vols, folio, Paris, 1883, binding a little rubbed.
- 575 W. ANDERSON, Pictorial Arts of Japan, artist proof copy, No. 11., 1 vol., 1886.
- 576 AUDSLEY, Decorative Art of Japan, two large vols. with original cases. 2
- 577 AUDSLEY & BOWES, Ceramic Art of Japan, two vols., 1875.
- 578 PERRY's United States Expedition, three vols., Washington, 1856.
- 579 MONTANUS, *Atlas Japanensis*, being remarkable addresses by way of Embassy for the East India Company to the Emperor of Japan (OGILVY's translation). London, 1670.
- 580 MONTANUS, *Atlas Japanensis*, being . . . Embassy to the Emperor of Japan, &c. (OGILVY's translation). London, 1670 (slightly repaired), no frontispiece.
- 581 MONTANUS, *Denkwürdege Gesandschafften der Ost Indischen Gesellschaft*, &c., Amsterdam, 1670. Back broken.
- 582 KAEMPFER, Japan, two vols., folio, 1728.
- 583 BING, Artistic Japan, six vols., half-mo. t.g., 1890.
- 584 BING, Japan Artistique, three vols.

- 585 TITSINGH, Illustrations of Japan, Shoberi's translation, Ackermann, 1822. 753
- 586 BOWES, Marks and Seals ; AUDSLEY, Notes on Japanese Art ; SALWEY, Fans of Japan ; HUMBERT, Japan (English edition). 4
- 587 Three albums of Surimono and small prints. 3
- 588 NETTO, Papier Schmetterlinge aus Japan ; and NETTO and WAGENER, Japanischer Humor. 2
- 589 MEMPES, Japan, No. 594 ; OGAWA, Views of Castles ; and PIGGOTT, Garden of Japan. 3
- 590 JOSIAH CONDER, Japanese Landscape Gardening, two vols., folio, 1893.
- 591 JOSIAH CONDER, The Flowers of Japan and Flower Arrangement, folio, 1891.
- 592 OGAWA, Japanese Manners and Customs, coloured collotype, folio n.d.; and Illustrations of Japanese Life, *Edition de luxe*, 1896. 2
- 593 OGAWA, Japanese Flowers in coloured collotype, folio, 1897. 3
- 594 A series of four volumes of Japanese flowers in colours, from wood blocks, *Jakuchu gwafu*. 4
- 595 A number of prints, including some *Hiroshigé Tokaido* ; and three albums of theatrical scenes.
- 596 A lot of coloured prints, "*Jidai no Hana*" ; REGAMEY, Okoma, and two albums of costumes.
- 597 Four fairy tales, translated by FLORENZ (French, German and English). 5
- 598 *Bijitsu gwa shi*, Magazine of Japanese Art (modern) up to 1901, about ten volumes in parts.
- 599 Dictionary of Japanese Artists (in Japanese) ; MORSE, Catalogue of Japanese Pottery ; BLACK, Young Japan. 3
- 600 Japanese Encyclopædia, Mampo Zensho, two odd volumes of *Fuji hakkei*, &c., in Japanese.
- 601 Trade Reports, Photos of the Daigaku University, Bowes' Shippo, Holmes' Hokusai, &c. one lot

END OF SALE.



Periodical Sales.

ANTIQUE CHINA, SILVER PLATE, &c.

COLOURED PRINTS, ENGRAVINGS, &c.

COINS, WAR MEDALS AND DECORATIONS,

VIOLINS, VIOLONCELLOS, BOWS, &c.

POSTAGE STAMPS.

Terms : 12½ per cent. ; minimum charge on any lot, 2/6.

ENTRIES CAN NOW BE RECEIVED.







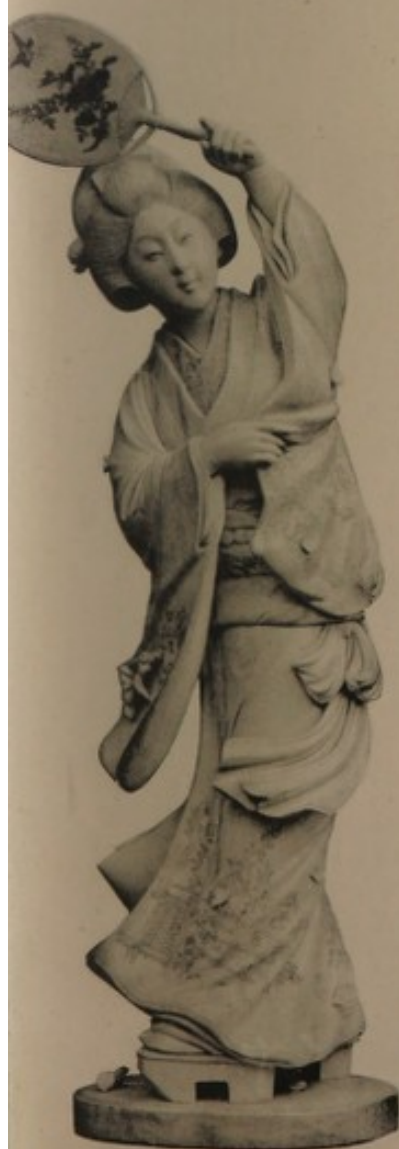
24



33



36



26



28



32



39



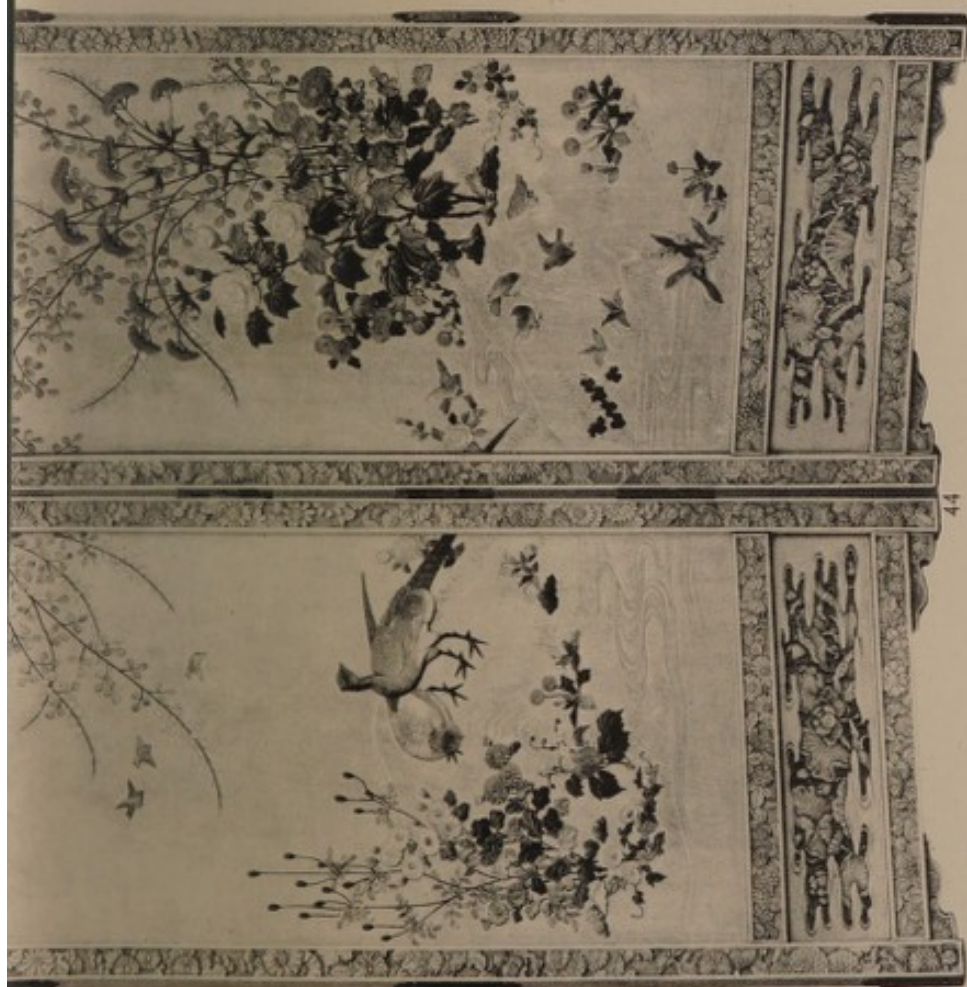
48



43



44



46



40







50



64



61



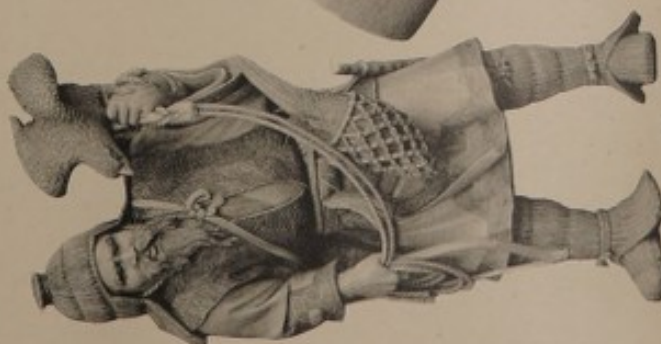
57



55



63



52



53





66



68

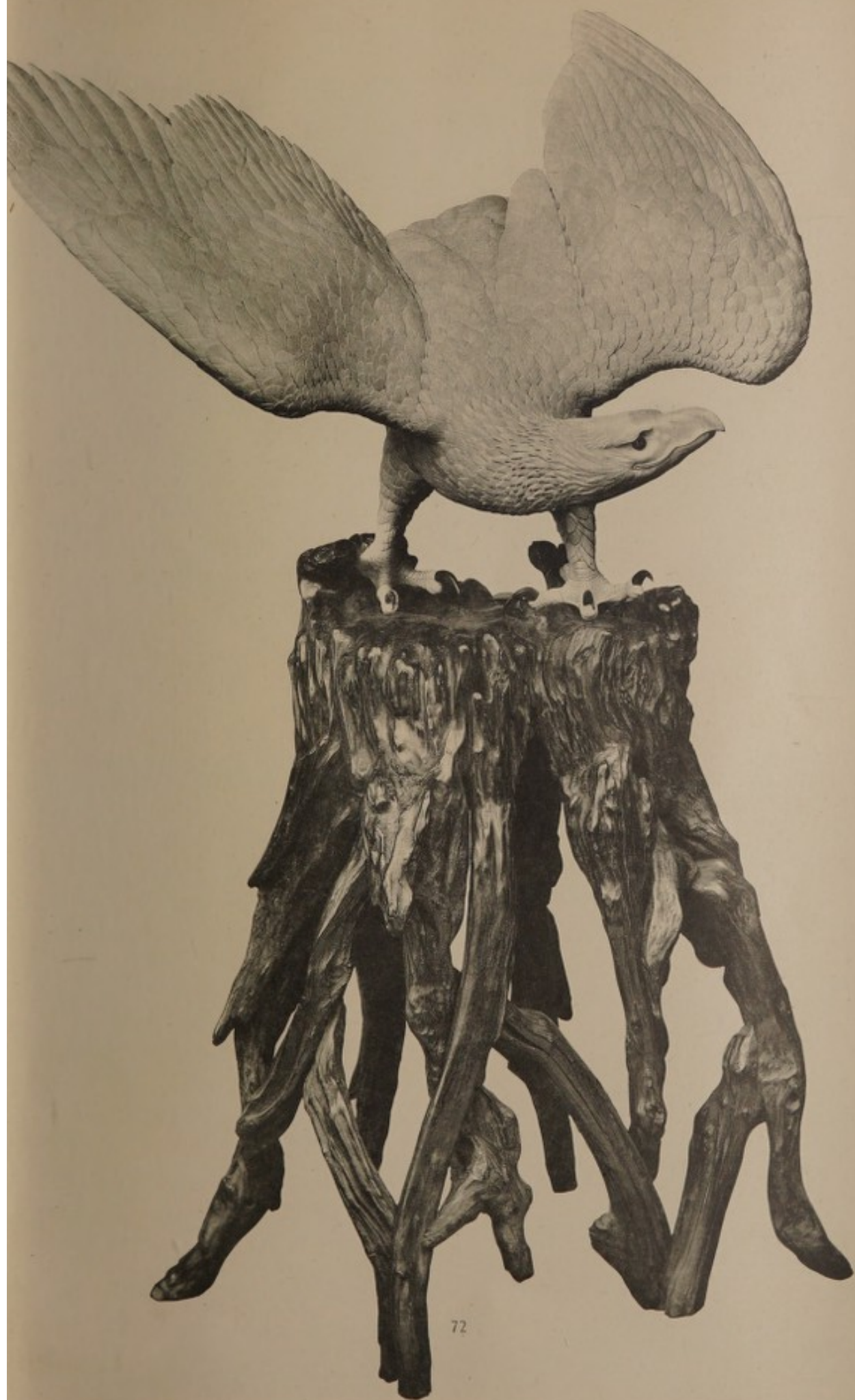


67



66

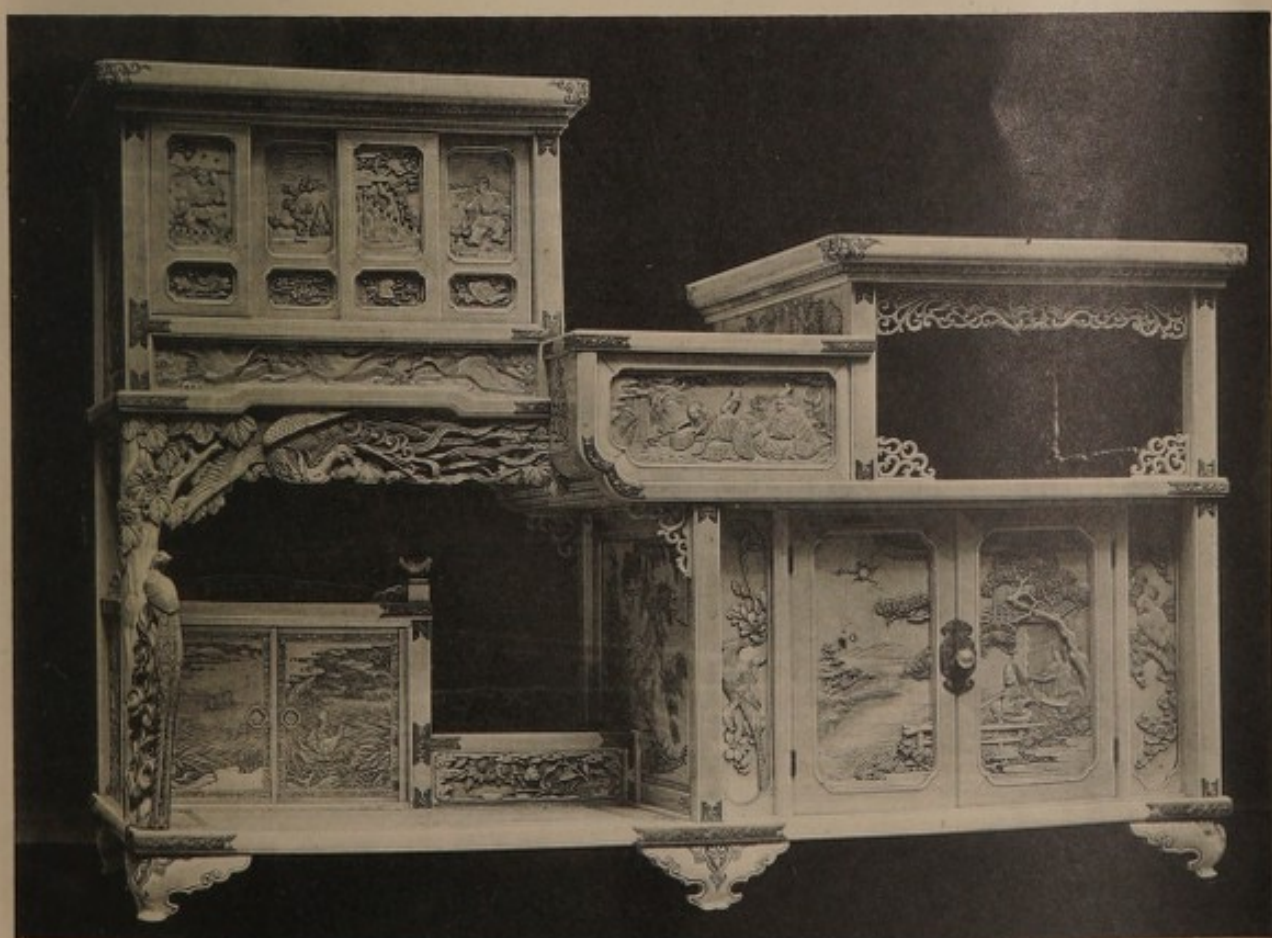








326







101



83



102



89 (2)



89 (2)



84 (3)

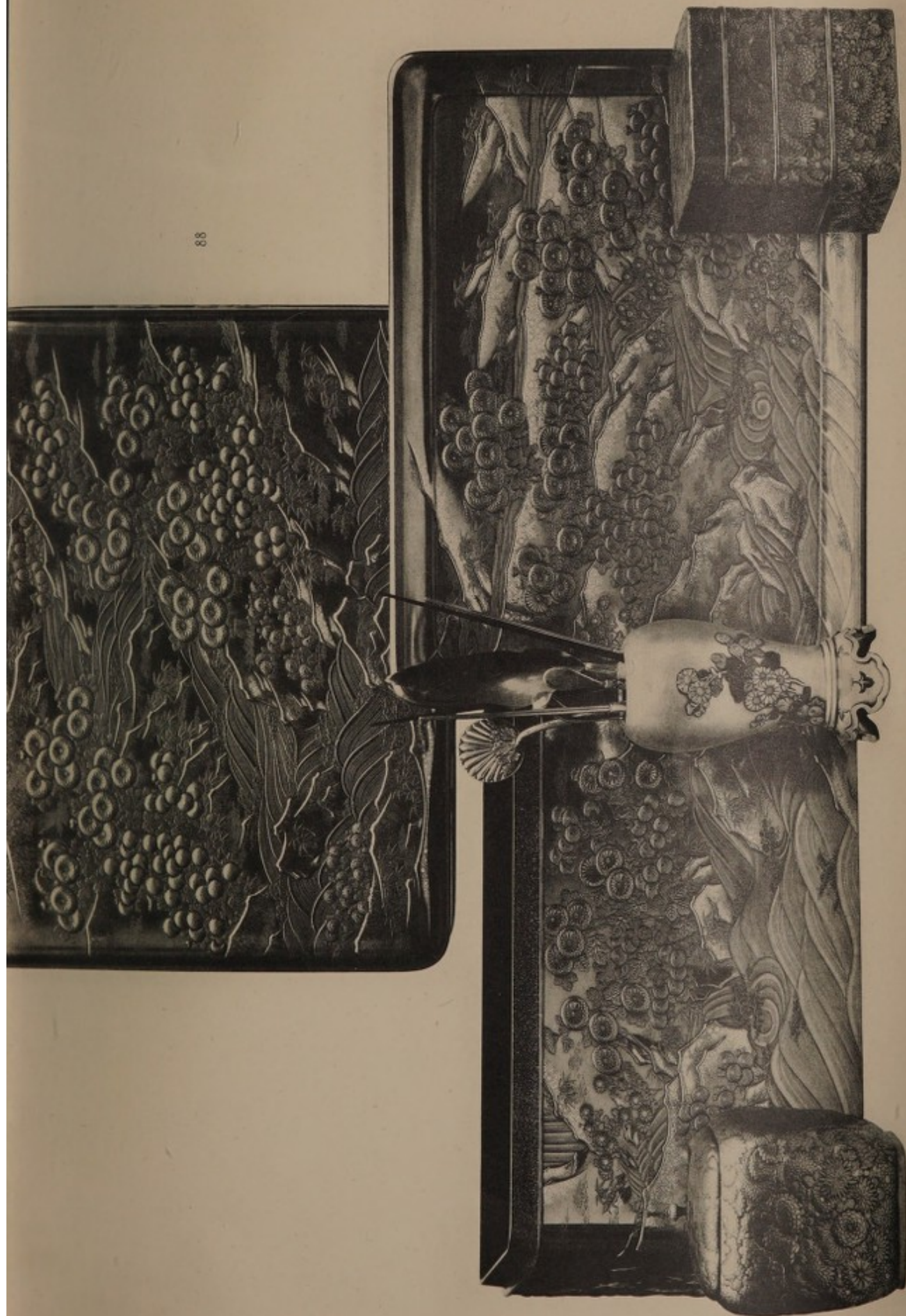


84 (3)



84 (3)





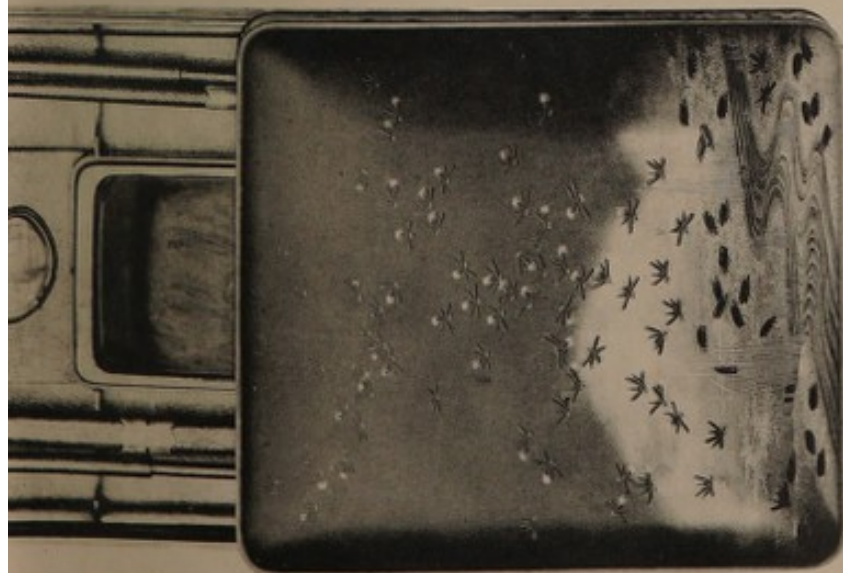




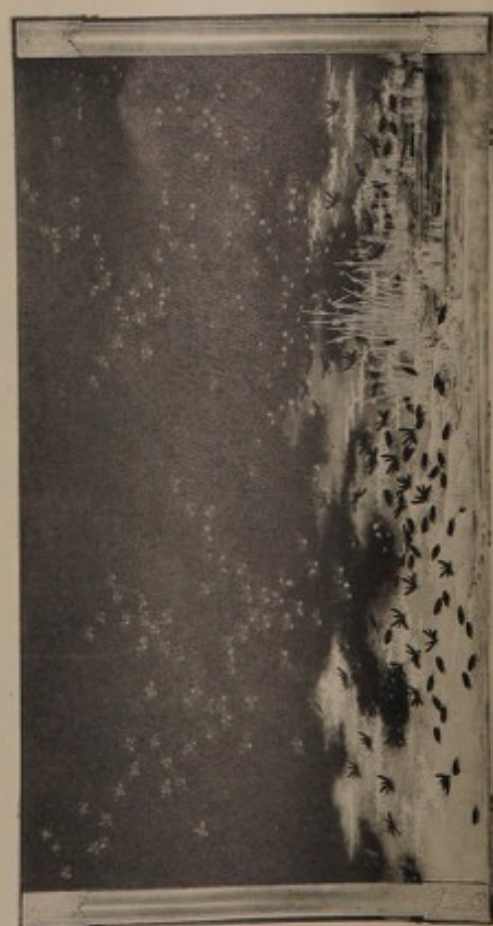
108 (3)



108 (3)



107 (2)



107 (2)



108 (3)





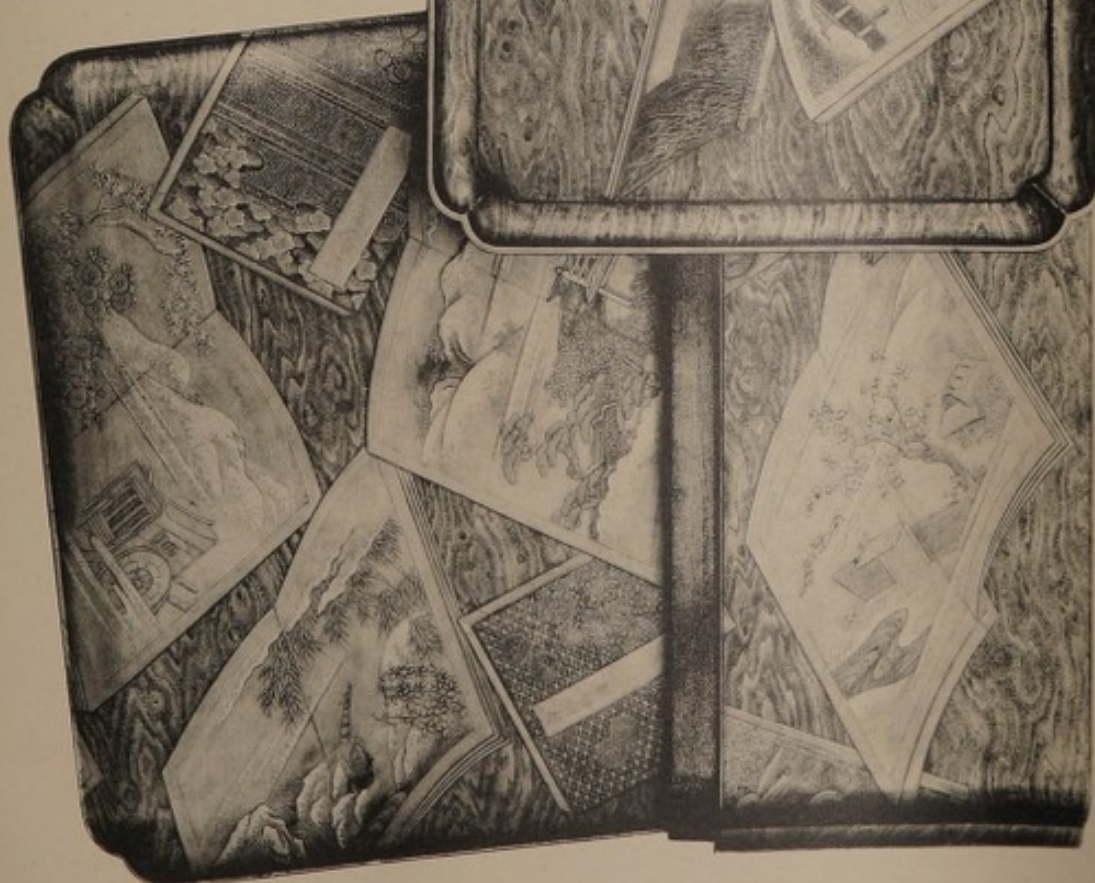
133



136 (3)

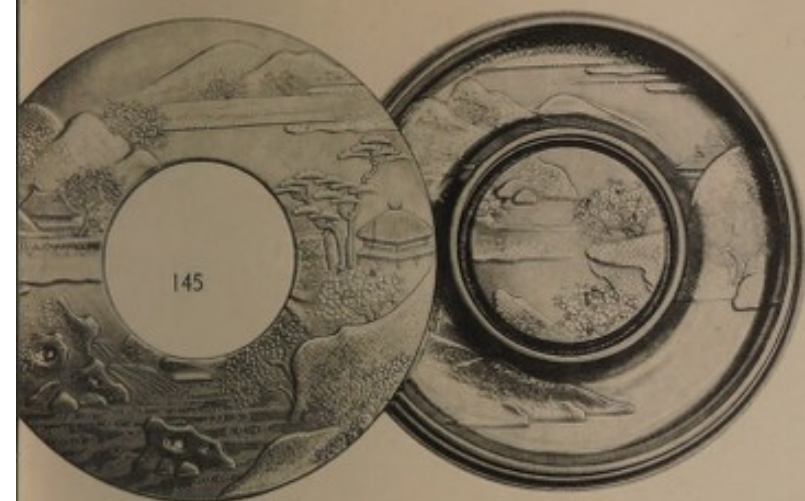


132



141





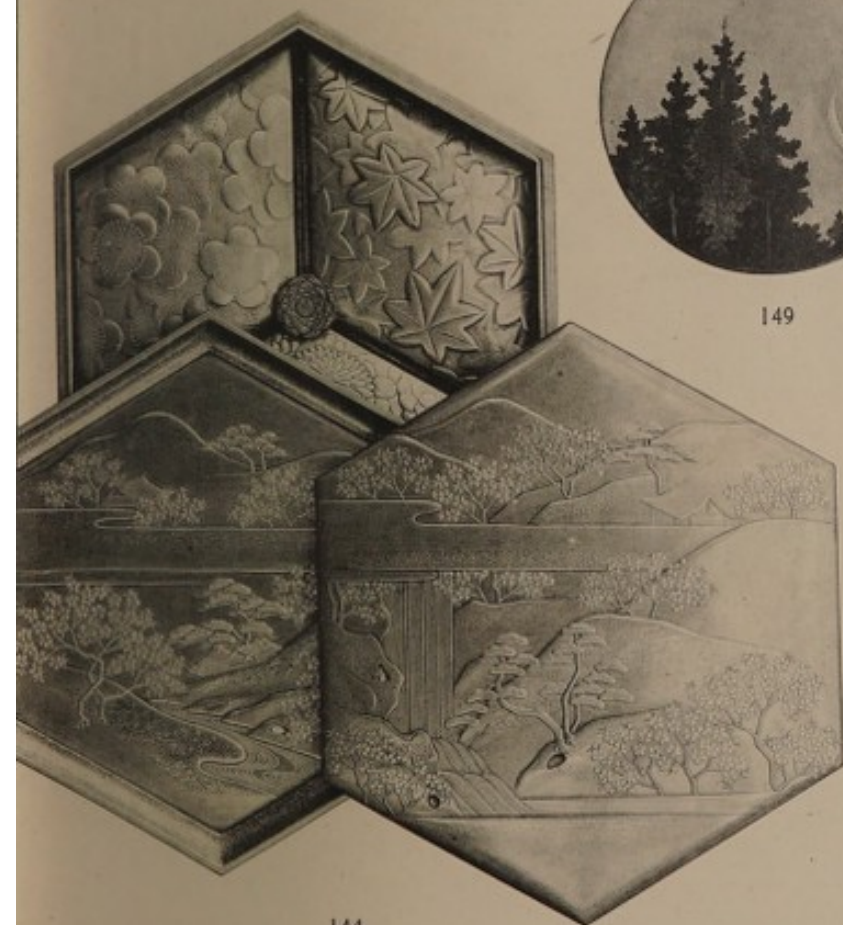
136 (3)



149



135



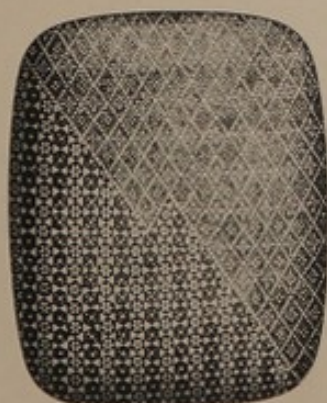
144



134

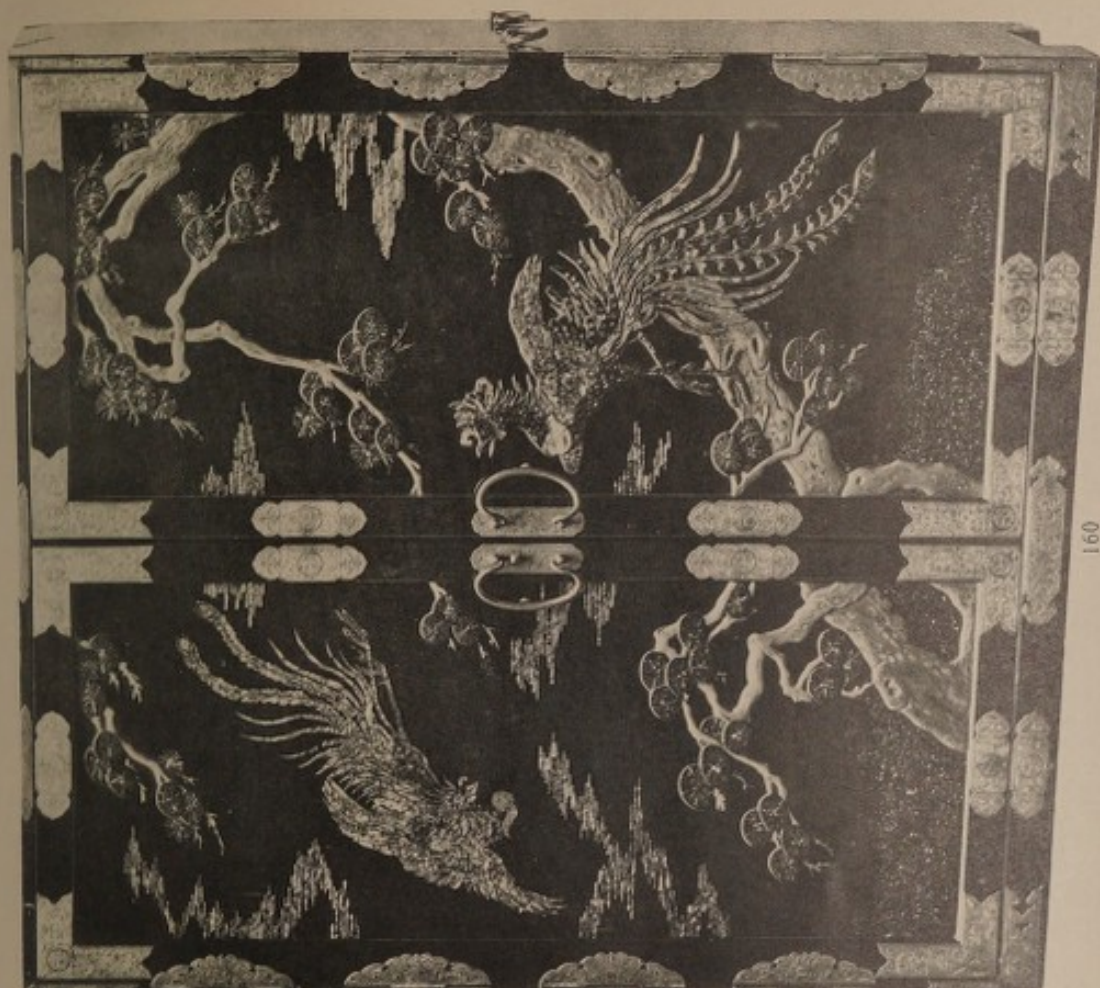


148



136 (3)









170



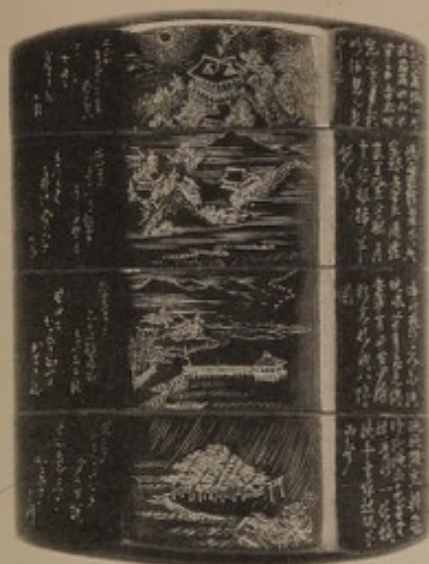
310



190



191



192



12



11



188



193



188

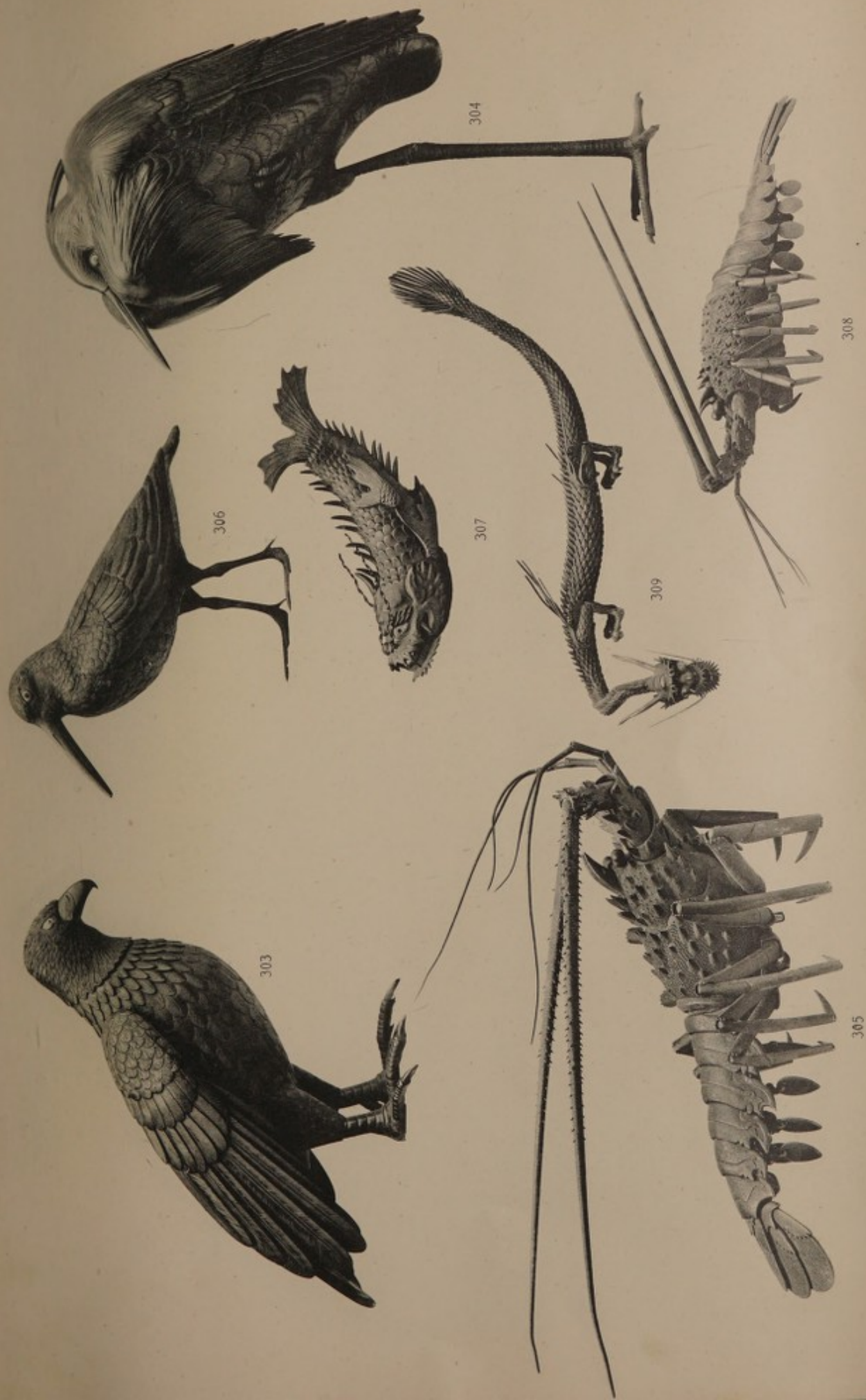


182













324



325



432

433

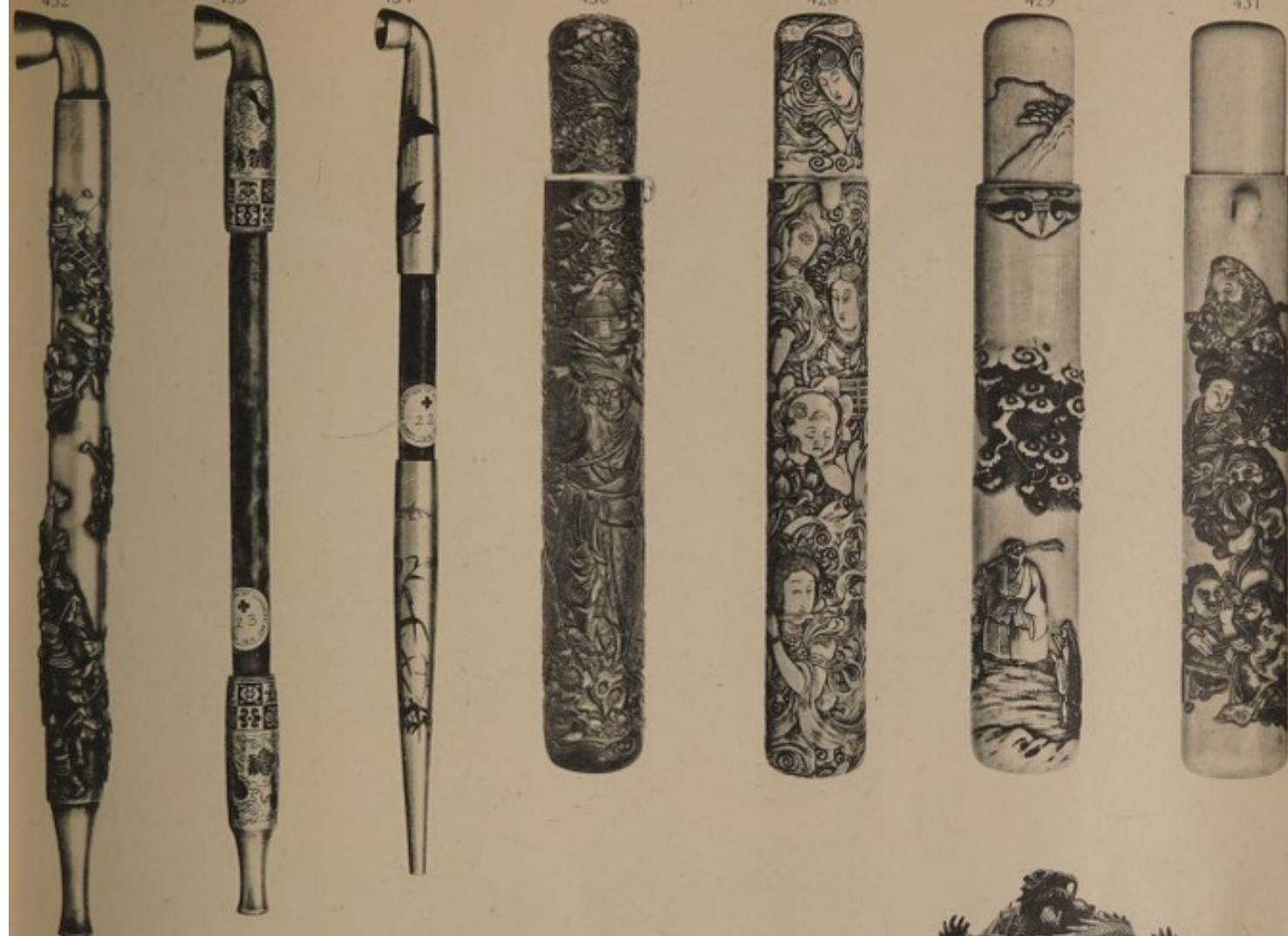
434

430

428

429

431



317



318







470



473

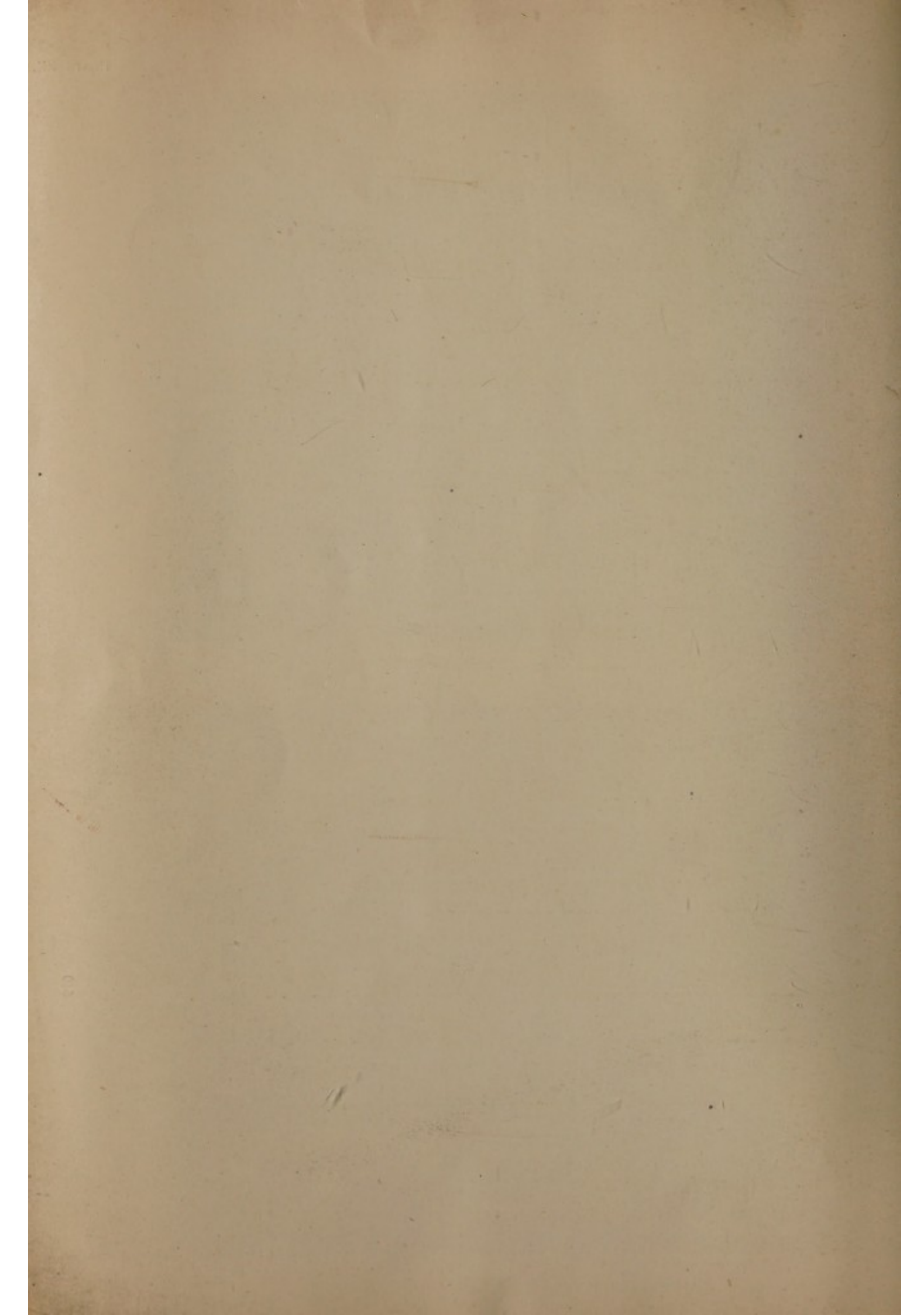
10



507



510



THE ARGYLL GALLERY

—NOTICE—

WEEKLY SALES

—OF—

COINS, WAR MEDALS AND DECORATIONS,
FINE ART AND BRIC-A-BRAC, AND
JAPANESE AND OTHER ORIENTAL
FINE ART PROPERTY, AND
: MUSICAL INSTRUMENTS :

AUCTION SALES

Of Postage Stamps are held on alternate Tuesdays &
Wednesdays each Month throughout the Season.

NEXT SALE December 18th & 19th, 1917.

Engravings, Pictures, Plate, Jewellery, &c.

NEXT SALE Will be duly advertised.

Violins and Musical Instruments.

NEXT SALE Will be duly advertised.

Coins and Medals.

NEXT SALE Will be duly advertised.

Oriental Art.

NEXT SALE Will be duly advertised.

Open daily for the reception of Fine Art Property,
Jewellery, Plate, China, Coins, Medals, Stamps, &c.

Particulars of these Sales will be found advertised every Saturday in the
"Times," "Daily-Telegraph," and "Morning Post."

VALUATIONS MADE FOR PROBATE AND FIRE INSURANCE.

TERMS ON APPLICATION.

Messrs. GLENDINING & CO., Ltd.

CONDUCT AUCTION SALES OF
SILVER, JEWELLERY, ANTIQUE
FURNITURE, VIOLINS.

War and Commemorative Medals,
Coins, Postage Stamps, Fine Art

ETC.

WEEKLY THROUGHOUT THE SEASON.

PRICED CATALOGUES 2/- each, post free.

CASH ADVANCES, IF REQUIRED,
ON LOTS SENT IN FOR
ABSOLUTE SALE.

Lots to be included in these Sales
should be sent in as soon as possible.

PROMPT SETTLEMENTS.

GLENDINING & CO., Ltd.

7 ARGYLL STREET, OXFORD CIRCUS, W. 1.

KIDDLE SMITH & DUFFUS, 23 College Hill, E.C. 4, and Forest Hill S.E. 28.