

Sales catalogue: Puttick and Simpson

Publication/Creation

5th December 1919

Persistent URL

<https://wellcomecollection.org/works/xnz8u2r6>

License and attribution

This work has been identified as being free of known restrictions under copyright law, including all related and neighbouring rights and is being made available under the Creative Commons, Public Domain Mark.

You can copy, modify, distribute and perform the work, even for commercial purposes, without asking permission.



Wellcome Collection
183 Euston Road
London NW1 2BE UK
T +44 (0)20 7611 8722
E library@wellcomecollection.org
<https://wellcomecollection.org>

Telephone : Gerrard 1561

Established 1794

Telegrams : "Puttickdom, Westrand, London "

CATALOGUE

OF

Old English and Chinese

PORCELAIN

ORIENTAL OBJECTS OF ART

GLASS

OLD ENGLISH FURNITURE

AND

PERSIAN RUGS

The property of Major ELVERSON,
of Herontye, East Grinstead

The property of a Gentleman
and from various sources

Which will be Sold by Auction

BY

Messrs. PUTTICK & SIMPSON

At 47 LEICESTER SQUARE, LONDON, W.C.2

On FRIDAY, DECEMBER 5th, 1919

AT TEN MINUTES PAST ONE O'CLOCK PRECISELY.

May be viewed the two days prior from 10 a.m. until 5 p.m.

CONDITIONS OF SALE.

I. The highest Bidder to be the Buyer; and if any dispute arise between two or more Bidders, the Lot so in dispute shall be immediately put up again and re-sold.

II. The Auctioneer shall regulate the bidding as he may think advisable.

III. In the case of Lots upon which there is a reserve, the Auctioneer shall have the right to bid on behalf of the Seller.

IV. The Purchasers to give in their Names and Places of Abode, and to pay down 5s. in the Pound, or more, in part of payment, or the whole of the purchase money, *if required*; in default of which, the Lot or Lots so purchased to be immediately put up again and re-sold.

V. The Lots to be taken away and paid for, whether genuine and authentic or not, with all faults and errors of description, at the Buyer's expense and risk, within Two Days from the Sale; Messrs. PUTTICK & SIMPSON not being responsible for the correct description, genuineness, or authenticity of, or any fault or defect in, any Lot, and making no warranty whatever.

VI. To prevent inaccuracy in delivery, and inconvenience in the settlement of the Purchases, no Lot can on any account be removed during the time of Sale; and the remainder of the purchase money must absolutely be paid on the delivery.

VII. Upon failure of complying with the above Conditions, the money deposited in part of payment shall be forfeited; all Lots uncleared within the time aforesaid shall be re-sold by public or private Sale, and the deficiency (if any) attending such re-sale shall be made good by the defaulter at this Sale.

Buyers who cannot attend the Sale, may have their Commissions faithfully executed by their obedient Servants

PUTTICK & SIMPSON.

Auction Rooms for the Sale of
All Fine Art Property,
LEICESTER SQUARE, LONDON, W.C.

**Collections Catalogued, Arranged and Valued for the Probate
and Legacy Duty or for Public or Private Sale.**

ESTABLISHED 1794.

FRIDAY, DECEMBER 5th, 1919.

AT TEN MINUTES PAST ONE O'CLOCK PRECISELY.

VARIOUS PROPERTIES.

OLD ENGLISH AND OTHER GLASS.

- 1 A table service, cut with bands of diamond pattern, comprising thirty-six wine glasses in four shapes, four water bottles, five finger bowls, and two salt cellars, 47 pieces.
- 2 Two wine glasses, with funnel bowls, on plain stems and folded feet, $6\frac{3}{4}$ in. high, and another, the bowl with inscription on plain stem with tear drop, 7 in. high.
- 3 A pair of wine glasses, with partly moulded bowls, on opaque white twist stems, $6\frac{1}{4}$ in. high, and another, with coloured twist stem, $5\frac{3}{4}$ in. high.
- 4 Two wine glasses, on knopped opaque white twist stems, and two others, with funnel bowls, on knopped air twist stems.
- 5 A pair of decanters and stoppers, with flat cut and fluted borders, $10\frac{1}{2}$ in. high.
- 6 A pair of sugar bowls, covers and stands, cut with bands of diamond pattern and fluting, $5\frac{3}{4}$ in. diam.
- 7 A pair of sugar bowls and covers, cut with trellis pattern, $5\frac{1}{4}$ in. diam.
- 8 A bowl, cut with bands of fluting, on cut stem and square moulded base, 9 in. diam.
- 9 A punch bowl, with similar cutting, $11\frac{1}{4}$ in. diam.
- 10 A pair of sugar bowls, cut with hobnail pattern, and with radiating foliage borders, on baluster stems and circular bases, $7\frac{3}{4}$ in. diam.
- 11 A pair of boat shaped salt cellars, cut with bands of diamond pattern, on moulded diamond shaped bases, and another pair, nearly similar.
- 12 A wine glass, with straight sided bowl, on baluster stem with tear drop, $7\frac{1}{4}$ in. high, and another, with similar bowl, on baluster stem, 7 in. high.
- 13 A pair of wine glasses, with funnel bowls, on knopped air twist stems, 7 in. high.
- 14 A wine glass, with straight sided bowl, on hollow baluster stem and folded foot, $7\frac{1}{4}$ in. high, and another, the baluster stem with tear drops, $7\frac{1}{2}$ in. high.

- 15 A wine glass, with engraved bowl, on baluster stem and dome foot, $7\frac{1}{2}$ in. high, and another, with funnel bowl, on similar stem and foot, $7\frac{1}{4}$ in. high.
- 16 A bowl, cut with diamond pattern and fluting, $8\frac{3}{4}$ in. diam.
- 17 A pair of confitures and covers, cut with bands of diamond pattern and fluting, on octagonal stems and square bases, $11\frac{1}{2}$ in. high.
- 18 A large wine glass, on moulded baluster stem, with tear drop and circular foot, $10\frac{1}{4}$ in. high.
- 19 A pair of small confitures and covers, cut with diamond pattern and fluting, on cut stems and square bases, 7in. high.
- 20 A pair of confitures, with dome covers, with bands of diamond pattern and flat cutting, on cut stems and square bases, $11\frac{1}{2}$ in. high.
- 21 A tea-pot and cover, with bands of diamond pattern and flat cutting, $8\frac{1}{2}$ in. high.
- 22 A pair of candlesticks, on baluster columns, cut with diamond pattern, and square bases, $10\frac{3}{4}$ in. high.
- 23 A pair of decanters and stoppers, engraved with allegorical figures of Time and Cupid, and with monograms and flower branches, 13in. high.
- 24 Fourteen sweetmeat dishes, cut with stars and trellis pattern.
- 25 Three pairs of cut salt cellars, another, boat shape, and a diamond cut custard glass.
- 26 A pair of honey jars, covers and stands, cut with stars in diamond panels, and with serrated edges, $6\frac{1}{4}$ in. diam.
- 27 Three custard glasses and covers, cut with festoons, etc.

THE PROPERTY OF A GENTLEMAN.

- 28 Five rummers, cut with bands of hobnail pattern, on bulbous stems and circular feet, $5\frac{1}{2}$ in. high.
- 29 A pair of confitures, entirely cut with diamond pattern, on short stems and square bases, $6\frac{1}{2}$ in. high.
- 30 A water jug, cut with diamond pattern and fluting, $6\frac{1}{2}$ in. high. $8\frac{1}{2}$ 9
- 31 A pair of small oval baskets and covers, with bands of diamond pattern and flat cutting, $3\frac{3}{4}$ in. wide. $5\frac{1}{2}$.
- 32 A set of four circular salt cellars, and three stands, diamond cut, and with serrated edges. 7 .
- 33 A pair of circular salt cellars, diamond cut, and another pair, nearly similar. $4\frac{1}{2}$.
- 34 A set of four circular salt cellars, cut with stars in diamond panels, on square bases, 3in. high. $4\frac{1}{2}$.
- 35 A pair of salt cellars, cut with trellis pattern, another pair, diamond cut, on square bases, and a pair of small tumblers, cut with faceting. $4\frac{1}{2}$.

- 36 A pair of small oval baskets and covers, cut with oval panels and trellis pattern, 3in. wide. 4 1/2
- 37 A small bowl and cover, with similar cutting, 3in. diam., and five ditto sweetmeat dishes, cut with stars and trellis pattern. 3 "
- 38 A goblet, the bowl cut with trellis pattern, on baluster stem and octagonal dome foot, 7 3/4 in. high. 2 1/2 "
- 39 A celery vase, cut with festoons, diamond pattern and spiral fluting, on short stem and square base, 8 1/2 in. high. 7 1/2 "
- 40 A pair of condiment bottles and stoppers, cut with diamond pattern and fans in arched panels, the necks with chevron pattern, on circular shaped bases, 8 1/4 in. high. 4 1/2 "
- 41 Two confitures and covers, cut with bands of diamond pattern and fluting, on short stems and square bases, 11in. high. 11 "
- 42 Another, and cover, cut with flowers in arched panels, on square base, 10 1/2 in. high. 4 "
- 43 A milk jug, cut with bands of diamond pattern and fluting, 5 1/4 in. high, and a circular bowl, with hobnail pattern in spiral panels, 2 3/4 in. diam. 2 1/2 "
- 44 A pair of decanters and stoppers, cut with hobnail pattern and fluting, 10in. high. 1 1/2 "
- 45 Two decanters and stoppers, cut with diamond and hobnail patterns, 8 1/4 in. and 11in. high, and two others, with engraved and cut borders. 2 1/2 "
- 46 Two decanters and stoppers, engraved and cut with festoons, etc., 11 1/4 in. and 12 1/4 in. high, and another, with engraved and cut border, 12 1/2 in. high. 1 1/2 "
- 47 A pair of wine glasses, the bowls engraved with rose branches and butterflies, on opaque white twist stems and dome feet, 6in. high, and another, with engraved bowl, on similar stem, 5 3/4 in. high. 5 "
- 48 A pair of rummers, engraved with birds and flower branches, 5 1/2 in. high, and two others, with engraved bowls. 2 "
- 49 A goblet, engraved with Chinese buildings, on faceted stem, 8in. high, a pair of rummers, with engraved bowls, 6in. high, and a pair of tall wine glasses, the bowls engraved with the Royal Arms, portrait of Queen Victoria, etc., on coloured twist stem, 8 1/2 in. high. 8 "
- 50 A pair of Venetian large wine glasses, the bowls engraved and decorated with flower branches, and with coloured twist stems and borders, 7in. high, three cut custard glasses, and a pair of wine glasses, with engraved bowls, on square bases. 6 "
- 51 An old German tumbler, enamelled with figures, and with inscription and date, 1747, 6in. high, and three others, engraved with birds, foliage scrolls, etc. 5 "

VARIOUS PROPERTIES.

OLD CHINESE BRONZES
AND OTHER
ORIENTAL OBJECTS OF ART.

- 52 A Chinese bronze seated figure of Buddha, with gilt head-dress, $14\frac{3}{4}$ in. high, on wood base. *4 9/10*
- 53 A bronze seated figure of Buddha, on lotus throne, $16\frac{1}{2}$ in. high. *3 1/2*
- 54 A gilt bronze seated figure of Buddha, $16\frac{1}{2}$ in. high. *4*
- 55 A bronze octagonal koro, cover and stand, incised with panels of diaper pattern, and with scroll handles, $12\frac{1}{2}$ in. high, and another, circular, modelled with conventional decorations, mask handles, $5\frac{3}{4}$ in. diam. *6 1/2*
- 56 A gilt bronze standing figure of a warrior, in the attitude of prayer, $11\frac{1}{2}$ in. high. *1 1/2*
- 57 A bronze bell, modelled with masks and palm leaves, $8\frac{3}{4}$ in. high, a double vase, with figures of a bird and animals in high relief. *3 1/2*
- 58 A bronze circular koro, on three feet, and wood stand, a small dish, modelled with fish and butterflies, and a brass bowl in the form of a fruit stand, on branch. *3 1/2*
- 59 A bronze beaker shaped vase, with bulbous centre, modelled with key pattern and clouds and with raised bosses, kylin mask and ring handles, $20\frac{1}{2}$ in. high, and wood stand. *5 1/2*
- 60 Another, modelled with key pattern and palm leaves, and with mask and loose ring decoration, $20\frac{1}{2}$ in. high, and wood stand. *1 1/2*
- 61 A bronze square beaker shaped vase, the bulbous centre modelled with figures of immortals and attendants, and with palm leaves and key pattern, and with ribbed corners, $19\frac{1}{2}$ in. high, and wood stand. *7 1/2*
15. 62 A beaker shaped vase, modelled with diaper pattern, and with dragon mask and ring decoration, 16 in. high, and wood stand, and another, with similar modelling, and with bosses round the neck, $15\frac{3}{4}$ in. high. *A 7*
- 63 A koro, inlaid with silver, and with elephant mask and ring handles, 4 in. high, and wood cover, another, with a similar design and diaper pattern, and a pair of small vases, inlaid with bamboo.
- 64 A bronze oblong koro, the borders modelled with conventional ornament, the cover surmounted by a figure of a kylin with ball, $10\frac{1}{4}$ in. wide.
- 65 A Soochow red lacquer fluted box and cover, carved with a river scene, and with figures of sages and attendants, in a garden on the banks in panel, the borders with conventional flowers and fruit branches on diaper ground, 14 in. diam., and wood stand.

- 66 An amber glass snuff bottle, painted with the Eight Horses, three others of coloured glass, and five porcelain snuff bottles.
- 67 Three Mandarin buttons, with gilt metal mounts, two agate handles, a Japanese ink case, of shibuichi metal, inlaid with flowers and butterflies, and another, chased with lotus.
- 68 A Chinese silver standing figure of Buddha, on gilt wood wave base, $4\frac{3}{4}$ in. high.
- 69 Two small kakemonos painted with figures of Buddha, two Satsuma bowls, and a circular dish, painted with figures, etc.
- 70 A pair of old Chinese bronze hexafoil koros, decorated with figures of boys in cloisonné enamel, and with mask and ring handles, on three feet, $3\frac{3}{4}$ in. high.
- 71 A pair of ivory table screens, carved with river scenes, boats and figures, the reverses with figures of ladies slightly coloured, and with borders of key and wave patterns, on pierced and carved stands, $10\frac{1}{2}$ in. high, and a Japanese carved ivory group of a mother and child, $3\frac{3}{4}$ in. high.
- 72 A Japanese carved ivory group of a fisherman and boy carrying a basket of fish, on shaped base, $8\frac{1}{2}$ in. high.

OLD CHINESE PORCELAIN.

- 73 Twelve octagonal soup plates, enamelled with peacocks and hens amid flowering plants, the borders with conventional flowers and scrolls, *famille rose*, *Ch'ien-lung*, $8\frac{1}{2}$ in. wide.
- 74 A *clair de lune* bowl, decorated with bunches of grapes in *sang de bœuf*, $9\frac{3}{4}$ in. wide.
- 75 A pair of tea-pots and covers, enamelled with pheasants, rocks and flower branches, in shaped panels, on black ground, *famille rose*, *Ch'ien-lung*, $4\frac{3}{4}$ in. high.
- 76 A pair of reclining figures of deer, in green, yellow and aubergine, $3\frac{1}{4}$ in. high, and four others, of mice holding vine branches.
- 77 A bottle shaped vase, with long neck, of splashed *sang de bœuf*, 14 in. high.
- 78 A figure of a crane, in natural colours, on rock base, 17 in. high.
- 79 A pair of plates, enamelled with birds and flower branches, the borders with diaper pattern, etc., in shaped panels, and three others, enamelled with flowers, the borders with emblems, *famille rose*, *Ch'ien-lung*.
- 80 An octagonal dish, enamelled with conventional flowers in a medallion, the border with flowering plants, *famille verte*, *K'ang-hsi*, $8\frac{1}{4}$ in. wide, and a pair of Nankin small vases, painted with figures of ladies, 5 in. high.
- 81 A set of three Mandarin mugs, enamelled with river scenes, boats and figures, in panels on coral and gilt diaper ground, 5 in. to 6 in. high.

- 82 A pair of Nankin circular dishes, painted with flower branches, $15\frac{1}{4}$ in. diam., and another, with flowers, palm leaves, etc.
- 83 A soup tureen and cover, painted with flowers, rocks, and bamboo, 9 in. diam., and a deep circular dish, painted with flowers.
- 84 A fluted bottle and basin, enamelled with birds, fruit branches, rocks and bamboo, the borders with flowers and fruit, *famille rose*, *Ch'ien-lung*, $11\frac{3}{4}$ in. high, $11\frac{3}{4}$ in. diam.
- 85 A Pekin quatrefoil bowl, enamelled with pheasants on rocks amid chrysanthemum branches, 7 in. wide, a Mandarin plate, enamelled with sea ports, scenes and figures in the manner of Dresden, and two Imari plates.
- 86 A circular dish, enamelled with a garden scene, with figure of a lady receiving a basket of fish from a fisherman, the borders with flowers and fungus in panels on diaper ground, *famille rose*, *Ch'ien-lung*, 15 in. diam.
- 87 Twelve octagonal plates, enamelled with river scenes and pagodas, the borders with flower and fruit branches, *famille rose*, *Ch'ien-lung*, $8\frac{3}{4}$ in. wide.
- 88 A pair of plates, enamelled with the Judgment of Paris, the borders gilt with foliage scrolls and shell ornament, *famille rose*, *Ch'ien-lung*, 9 in. diam.
- 89 A Nankin vase, painted with phoenix amid conventional peony branches, the neck with joey heads, 14 in. high.
- 90 A ditto ginger jar, painted with emblems in quatrefoil panels on marbled blue ground, pencilled with prunus, *K'ang-hsi*, $6\frac{1}{2}$ in. high, and wood cover and stand.
- 91 Another, painted with birds, peony and chrysanthemum branches and rocks, $10\frac{3}{4}$ in. high, and wood cover and stand, and a pair of Nankin circular dishes, painted with river scenes and pagodas, the borders with flowers, butterflies and surimono panels, $14\frac{3}{4}$ in. diam.
- 92 A cylindrical vase, of *sang de bœuf*, 14 in. high.
- 93 A pair of cylindrical shaped vases, of *sang de bœuf*, on pierced ormolu bases, 8 in. high, another, bottle shape, $5\frac{1}{2}$ in. high, and a ditto, of square form, 5 in. high.
- 94 A cylindrical vase of self-colour blue, $5\frac{1}{2}$ in. high, a pair of ditto vases, $5\frac{1}{2}$ in. high, and four others, of turquoise.
- 95 A vase, of mustard yellow, $5\frac{1}{2}$ in. high, two ditto small vases, a modelled bowl, two apple green vases, three others, smaller, and a miniature bowl.
- 96 An oviform vase, of liver colour, 16 in. high.
- 97 A tea-pot, cover and stand, modelled and enamelled with flower branches in high relief, small pierced and gilt panels at the sides, *famille rose*, *Ch'ien-lung*.
- 98 A circular dish, the centre and outer border enamelled with Mandarin ducks in a lotus pond, the inner border with fish in panels on powder blue and gilt ground, *famille verte*, *K'ang-hsi*, 13 in. diam.
- 99 A circular dish, enamelled with travellers on a road, the border with peonies in panels on green and turquoise diaper grounds, *famille rose*, *Ch'ien-lung*, 15 in. diam.
- 100 A pottery seated figure of Kwan-yin, with attendants, coloured purple, turquoise and brown, the features unglazed, $9\frac{1}{4}$ in. high, and a green glaze candlestick, $4\frac{1}{4}$ in. high, *Ming*.

- 101 A Nankin sprinkler, painted with flowering plants and rocks in leaf panels, *K'ang-hsi*, 6 $\frac{3}{4}$ *in. high*, and a vase, enamelled with kylins amid conventional peony branches, the borders with joey heads and diaper pattern, *famille verte*, *Ming*, 8 $\frac{1}{4}$ *in. high*.
- 102 An Imari deep circular dish, painted and enamelled with a picnic party, the border with similar figures in panels on diaper ground, 19 $\frac{1}{2}$ *in. diam.*

CHINESE ARMORIAL PORCELAIN.

THE PROPERTY OF A GENTLEMAN.

- 103 A PART TEA AND COFFEE SERVICE, enamelled with armorials and with gilt scroll borders, comprising a bowl, four plates, eleven tea cups, a coffee cup, and thirteen saucers, *Ch'ien-lung*, the plates dated 1747, the remainder, 1748, 30 pieces.
- 104 Another, enamelled with monograms in cartouches and with blue and gilt borders, comprising a milk jug, a bowl, a caddy and cover, six tea cups, five coffee cups, and six saucers, 21 pieces.
- 105 A tea-pot, cover and stand, enamelled with armorials and heraldic designs, and with sepia and gilt borders, 5*in. high*, a milk jug and cover, a tea caddy and cover, and a spoon tray of the same service, *Ch'ien-lung*.
- 106 A tea-pot and cover, enamelled with armorials, and painted with conventional flowers and scrolls in sepia, and a milk jug and cover, similar.
- 107 An octagonal dish, enamelled with armorials, the borders with flower sprays and gilt scroll-work, three plates, two others, smaller, and a tea cup and saucer, of the same service.
- 108 Five tea cups, four coffee cups and four saucers, enamelled with different armorials.
- 109 Three tea cups and saucers, enamelled with different armorials, a saucer, a bowl and stand, a saucer dish, and a plate.
- 110 Four tea cups, seven coffee cups, a spoon tray, and three plates, enamelled with different armorials.
- 111 A coffee pot and cover, enamelled with armorials and crests in brown and gilt, 10*in. high*, a butter dish and cover, with armorials and flowers, and a tea-pot and cover, enamelled with arms, and with blue ribbon borders, 5 $\frac{1}{2}$ *in. high*.
- 112 A coffee-pot and cover, enamelled with Dutch armorials, and with cupids among clouds, 9 $\frac{1}{2}$ *in. high*, and a jug and cover, with different armorials, 8 $\frac{1}{2}$ *in. high*.
- 113 Nine plates, enamelled with Dutch armorials, the borders with entwined flowers and bamboo.

- 114 Five plates, enamelled with Dutch crests, monograms and figures, the borders with river scenes and flowers in panels, on decorated gold ground, *Ch'ien-lung*.
- 115 Six others, enamelled with Dutch armorials, the borders gilt with foliage scrolls and shell ornament, *Ch'ien-lung*.
- 116 Six plates, enamelled with different armorials, the borders with flowers, etc.
- 117 Six others.
- 118 A pair of plates, enamelled with armorials, and with flower branches, *bianca sopra bianca*, the borders with scale pattern and scrolls in sepia and gilt, and another, with armorials, foliage scrolls, etc., in sepia and gilt.
- 119 A pair of plates, enamelled with Dutch armorials, the borders gilt with flowers and vines, a pair of soup plates, with armorials and with gilt scroll borders, a plate, with various arms, the borders gilt with shells and foliage, and a saucer dish.
- 120 Six plates, enamelled with different armorials, seven others, with blue and gilt borders, and three small plates.
- 121 Five saucer dishes, enamelled with bouquets of flowers and armorials, the borders with entwined flowers, bamboo and ribbon ornament, *Ch'ien-lung*, 10 $\frac{3}{4}$ in. diam.
- 122 Seven large dishes and a hot-water plate, enamelled with different armorials, the borders with flowers, diaper pattern, etc.
- 123 A soup tureen and cover, enamelled with armorials, and with blue and gilt borders, another, a cover, and a sauce tureen, cover and stand, enamelled with armorials, and with flower sprays.
- 124 A bowl, enamelled with a European hunting scene, 11 $\frac{1}{4}$ in. diam., and another, with armorials and flower sprays, 10 $\frac{1}{4}$ in. diam.
- 125 An octagonal dish, enamelled with armorials, and with parrots, fruit and flowers, the border with sepia and gilt diaper pattern, 15in. wide, and another, 11 $\frac{1}{2}$ in. wide.
- 126 Five bowls, enamelled with river scenes, with buildings, boats and figures in blue, yellow, aubergine, etc., *famille verte*, *K'ang-hsi*, 6in. diam.
- 127 A plate, enamelled with a peony branch, the border with flowers in panels with pink and blue diaper borders, and another, with flowering plants and diaper pattern, *famille rose*, *Ch'ien-lung*.
- 128 Nine Nankin plates, painted with pagodas among waves, and with storks in shaped panels on diaper ground, the borders with conventional flower branches on blue ground, *K'ang-hsi*, 9 $\frac{1}{2}$ in. diam.
- 129 Fourteen others, painted with flowers in medallions, on blue scale pattern ground, the borders with flowering plants, *K'ang-hsi*, 9 $\frac{3}{4}$ in. diam.
- 130 Four Nankin octagonal plates, painted and gilt with lotus, bamboo and rocks, the borders with flower and fruit branches, and two others, painted with river scenes in panels, flower branches, etc.

- 131 A Nankin bowl, painted with exteriors, with figures of ladies and gentlemen, the borders with diaper pattern, 8in. diam., and a beaker, painted with conventional flowers and palm leaves, 7½in. high, and wood stand, both *K'ang-hsi*.
- 132 A Nankin small vase, painted with peach branches and palm leaves, 5½in. high, another, with a garden scene and figures, two others, painted with landscapes and figures and a beaker, painted with lotus, etc., 8½in. high, and three wood stands.
- 133 A seated figure of Kwan-non, holding a child, and with attendants, *blanc de chine*, 14¾in. high.

OLD ENGLISH PORCELAIN.

THE PROPERTY OF A GENTLEMAN.

- 134 A pair of Bow plates, painted with parrots, the borders with flowers and butterflies, outlined with foliage scrolls, 8in. diam.
- 135 An old Worcester plate, painted with fan pattern in the Imari taste and gilt, *Chinese mark*, 7½in. diam.
- 136 A pair of Swansea plates, painted with bouquets and detached flowers and gilt, *impressed mark Swansea and trident*, 7¾in. diam.
- 137 A Spode toy cabaret, painted with groups of flowers on dark blue and gilt striped ground, comprising a tea-pot and cover, a sugar basin and cover, a milk jug, a bowl, a cup and saucer, and an oblong tray, *mark in red*, 9 pieces.
- 138 A Bow toy tea service, painted with flowering plants and rocks in the Chinese taste in blue, comprising a tea-pot and cover, a sugar basin and cover, a milk jug, four cups, and six saucers, 15 pieces.
- 139 An old Worcester part tea service, painted with flower sprays on ribbed ground, comprising a tea-pot, a caddy and cover, a milk jug, six cups and eight saucers, *crescent and other marks*, 18 pieces.
- 140 A Chelsea tea-pot and cover, painted with exotic birds, groups of fruit and insects, the borders with conventional flowers and diaper pattern in shaped panels, scroll handle and bird spout, 4½in. high.
- 141 A Chelsea modelled basket, in white, and with gilt metal mounts, a bee cream jug, 4in. high, both with *impressed triangle mark*, and another, modelled with strawberry branches, the base incised D. 1750, 3½in. high.
- 142 An old Worcester tea cup, coffee cup and saucer, painted with ducks, peony branches and rocks in the manner of Chinese *famille rose*.

- 143 A Bow small mug, painted with peony branches and rocks in the manner of Chinese *famille rose*, $2\frac{1}{4}$ in. high, and two ditto cups, painted with flowering plants in the Chinese taste in blue.
- 144 A Chinese coffee cup and saucer, painted at Chelsea with Watteau garden scenes and figures, a Mandarin plate, enamelled with equestrian and other figures on a river bank, and a Leeds pottery plate, printed with figures and inscription, "The Tythe Pig."

THE PROPERTY OF MAJOR ELVERSON, OF HERONTYE,
EAST GRINSTEAD.

- 145 A salt glaze tea-pot and cover, painted emblems, flowering plants and rocks, in the manner of Chinese *famille rose*, $3\frac{1}{2}$ in. high, and another, of cobalt blue, modelled with vine branches, on three lion mask and paw feet, $3\frac{1}{2}$ in. high.
- 146 A Spode pottery vase, modelled with conventional flower branches and butterflies in colours on blue ground, $12\frac{1}{2}$ in. high.
- 147 A Chelsea-Derby two-handled cup and cover, painted with garlands of flowers in green, in panels divided by pink ribbons and gilt, a Chelsea square shaped cup, painted with birds and butterflies, and a Bow white cup, modelled with hawthorn branches in relief.
- 148 A Lowestoft small tea-pot and cover, painted with Chinese river scenes, figures and pagodas, in blue, $4\frac{1}{4}$ in. high, and another, and cover, Worcester, painted with ducks in ponds, buildings and flower branches in the Chinese taste in blue, $4\frac{1}{4}$ in. high.
- 149 An old Worcester tea cup and saucer, marbled with gold, a large cup and saucer, painted with Queen Charlotte pattern and gilt, *crescent mark*, another, and saucer, painted with flower sprays in colours, and a cup and saucer, painted with Mandarin figures.
- 150 A pair of Lowestoft tea cups and saucers, painted with Chinese river scenes, bridges and pagodas in blue, two old Worcester cups, three others, Salopian, and a saucer, painted with river scenes, flowers, etc., in the Chinese taste in blue.
- 151 Two old Worcester tea cups and saucers, painted with Chinese figures, another, five coffee cups, painted with figures and flowers, and a Minton cup and saucer.
- 152 A pair of old Derby beakers, painted with baskets of flowers in panels, with gilt borders on canary ground, 4 in. high.
- 153 A Bow octagonal plate, painted with flowering plants and rocks in the manner of Chinese *famille rose*, $8\frac{1}{2}$ in. wide, and a ditto hexagonal tea-pot and stand, painted with Chinese figures in a garden, 6 in. wide.

- 154 A Longton Hall tea-pot and cover, painted with figures of ladies and attendants in a garden, in the Imari taste and gilt, $6\frac{3}{4}$ in. high.
- 155 A pair of Nantgarw plates, the centres painted with bouquets of flowers, the borders with birds, fruit and flowers in panels, and modelled with foliage scrolls and ribbon ties, *impressed mark, Nantgarw C.W.*
- 156 A pair of Plymouth white sauceboats, modelled with groups of flowers and foliage scrolls, 3in. high.
- 157 A pair of Lowestoft cream jugs, painted with birds, flowering plants and rocks in the Imari taste and gilt, $3\frac{1}{2}$ in. high, and a pair of ditto tea cups and saucers, painted with Chinese river scenes, buildings and figures.
- 158 A Longton Hall bowl, painted with Chinese river scenes, buildings and boats, in blue, *marked L.L. interlaced*, $8\frac{1}{4}$ in. diam.
- 159 Another, Lowestoft, painted with flowering plants and rocks in the Chinese taste in blue, $8\frac{1}{2}$ in. diam.
- 160 A Longton Hall cylindrical mug, painted with chrysanthemum branches, rocks and bamboo in the Chinese taste in blue, $4\frac{3}{4}$ in. high, an old Worcester cream jug, fluted and painted with flowers in the Chinese taste in blue, and another, with flower sprays.
- 161 A Liverpool sauceboat, modelled with masks and strawberry branches, and painted with flowers in the Chinese taste in blue, $4\frac{1}{2}$ in. high, and another, Bow, painted with Chinese river scenes in blue, in panels on modelled ground, $2\frac{3}{4}$ in. high.
- 162 A Longton Hall tea-pot and cover, painted with groups and detached flowers, and with marbled blue and gilt borders, $5\frac{1}{4}$ in. high.
- 163 A Liverpool tea cup and saucer, painted with Chinese garden scenes and figures in sepia, an old Worcester fluted tea cup and saucer, painted with flower sprays in blue, and a pair of Longton Hall oval salt cellars, modelled with foliage scrolls.
- 164 A Chelsea figure of a girl with lamb on scroll base, with may stump, $5\frac{3}{4}$ in. high, a Bow figure of a boy with dog, 5in. high, and a Chelsea seated figure of an old man, in white, $3\frac{1}{2}$ in. high.
- 165 A Chelsea figure of a monk holding a skull, and with books at his feet, on shaped base, 6in. high.
- 166 A Chelsea-Derby group, The Shoeblack, on shaped base, with tree stump, Dresden model, 7in. high.
- 167 A pair of Longton Hall busts of Mars and Neptune, on pierced and shaped pedestals, outlined with foliage scrolls in turquoise, $6\frac{1}{2}$ in. high.
- 168 A pair of old Derby figures of pedlars, on scroll bases outlined with gilt, $5\frac{1}{2}$ in. high.
- 169 A pair of Chelsea figures of boys, emblematic of Autumn and Winter, 5in. high.
- 170 A Chelsea group of two canaries in a may tree, a dog at the base, and forming candlestick, on scroll base outlined with gilt, 9in. high.
- 171 An old Worcester plate, painted with flowers in the Hizen taste, in panels divided by salmon and gilt bands, $7\frac{1}{2}$ in. diam., and another, similar, $6\frac{3}{4}$ in. diam.

- 172 An old Worcester tea-pot and cover, painted with figures of Chinese ladies and children, $5\frac{1}{4}$ in. high.
- 173 An old Worcester fluted coffee cup and saucer, painted with festoons of fruit and butterflies, and with dark blue and gilt borders, *the cup with crescent mark.*
- 174 A ditto coffee cup and saucer, painted with quails and flowering plants in the Hizen taste, and with shaped turquoise and gilt borders, *the cup with square mark.*
- 175 An old Worcester bowl, painted with birds, flowering plants and rocks in the manner of Chinese *famille rose*, 6 in. diam.
- 176 A pair of old Worcester plates, painted with bouquets and detached flowers on canary ground, 8 in. diam.
- 177 A Bristol bowl, fluted and painted with flower festoons in green, *cross mark No. 1 in blue*, $5\frac{1}{4}$ in. diam.
- 178 A Longton Hall milk jug, painted with a lake scene, with exotic birds on the bank, and with dark blue and gilt border, $4\frac{1}{2}$ in. high.
- 179 A Chelsea figure of a negress holding a shell, on shaped scroll base, $8\frac{1}{4}$ in. high.
- 180 A ditto figure of a youth leaning on a may stump, playing a drum, on pierced scroll base, outlined with gilt, $8\frac{1}{2}$ in. high.
- 181 A Chinese seated figure of Buddha, *blanc de chine*, $7\frac{1}{4}$ in. high, a ditto cup and saucer, painted with flowers, and a pair of Minton plates, painted with birds and flowers, the pierced basket pattern borders ruby and gilt, $9\frac{1}{2}$ in. diam.

VARIOUS PROPERTIES.

OLD ENGLISH FURNITURE.

- 182 A pair of James II. oak chairs, the high backs pierced and carved with foliage scrolls, and with turned columns at the sides, on scroll legs and stretchers, cane panels.
- 183 A Chippendale mahogany chair, the square back with interlaced centre, on carved cabriole legs and claw and ball feet.
- 184 A Chippendale mahogany winged bookcase, with break front, the upper part enclosed by glass trellis doors, and with carved dental cornice, the lower part with cupboards enclosed by panelled doors, $75\frac{1}{2}$ in. wide.
- 185 An old English ebonised bonheur de jour, painted with flowers and foliage scrolls, and with ivory borders, the upper part with a cupboard and two shelves, and with drawer under, on turned legs, 30 in. wide.
- 186 A Jacobean oak settle, with high panelled back, 71 in. wide.

- 187 A satinwood winged bookcase, of Sheraton design, inlaid with borders of husk ornament and foliage scrolls, enclosed by two pairs of glass trellis doors, and with moulded cornice, the lower part with two pairs of panelled doors with oval medallions, 80in. *wide*.
- 188 A Georgian mahogany sideboard, the slightly raised back with sliding doors and brass rail over, the bow front with drawer, an oval medallion in the centre, the sides with a cupboard and cellarette, brass lion mask and ring handles, on turned legs, 78in. *wide*.
- 189 A SET OF FIVE QUEEN ANNE MAHOGANY CHAIRS, the shaped backs with plain centres, on cabriole legs carved with shell and foliage ornament and club feet.
- 190 A Sheraton mahogany semi-circular side table, banded with satinwood and inlaid with foliage, on square tapered legs, 36in. *wide*.
- 191 A Georgian mahogany oblong folding dining table, on cabriole legs and club feet, 55in. by 42in.
- 192 A Hepplewhite mahogany elbow chair, the shaped back carved with a circular medallion of foliage in the centre, and with husk festoons, on square fluted legs.
- 193 Another, carved with honeysuckle ornament in the centre, husk festoons and foliage, on square fluted legs.
- 194 A Queen Anne walnut bureau, inlaid with borders of herringbone pattern the fall down front enclosing pigeon holes, etc., and with five drawers under, 36½in. *wide*.
- 195 A Jacobean oak chest of five drawers, the fronts with raised and sunk panels, and moulded borders, inlaid with foliage designs in mother o' pearl and ivory, the three lower drawers enclosed by a pair of folding doors, with similar panels and borders, 45in. *wide*.
- 196 A Chippendale mahogany square folding card table, with fretwork corner brackets, on square legs, 29in. *wide*.
- 197 A Jacobean oak cabinet, the front panels incised with conventional designs, 45½in. *wide*.
- 198 Another, the panels carved with quatrefoil ornaments, the border with semi-circular designs 43in. *wide*.
- 199 A Jacobean oak refectory table, with plain borders, on octagonal legs and stretchers, 93½in. by 36½in.
- 200 Two Georgian mahogany shaped cheese stands, 15½in. *wide*, and a small turned tripod.
- 201 A Sheraton mahogany oval Pembroke table, inlaid and banded with satinwood, and with flaps and drawer, on square tapered legs, 34in. *wide*.
- 202 A Chippendale mahogany oblong table, with flaps and drawer, on square legs and X stretcher, 27½in. *wide*.
- 203 A Sheraton mahogany secretaire bookcase, inlaid with satinwood lines, enclosed by a pair of trellis glass doors, the cornice fluted and carved with medallions, a secretaire and four other drawers under, 49in. *wide*.

- 204 An old English black lacquer small coffer, with dome top, painted and gilt with Chinese garden scenes and figures, on square legs, 20in. wide.
- 205 A Sheraton mahogany wardrobe, banded and inlaid with tulip and satinwoods, enclosed by a pair of doors with oval medallions, the cornice moulded, and with pear drop border, the lower part with six short drawers, brass drop handles, 62in. wide.
- 206 A Sheraton mahogany small sideboard, banded with satinwood, inlaid with circular medallions and fan corners, two drawers in the centre, a cupboard and cellarette at the sides, the back mounted with a brass rail, the centre with adjustable oval mirror, on square tapered legs, 48in. wide.
- 208 A Sheraton mahogany tea cabinet, inlaid with satinwood lines, and containing two boxes, cut glass sugar basin, and tin box for tea service, on square tapered legs, 16½in. wide.
- 209 A Georgian mahogany small oblong wine cooler, with folding top, and brass handle, 14½in. wide.
- 210 A Hepplewhite mahogany elbow chair, the shield back fluted and carved with wheat ears, on square tapered legs.
- 211 A Sheraton mahogany square folding card table, with round corners, inlaid with musical trophies in medallions and with narrow borders, on square tapered legs, 36in. wide.
- 212 A James II. oak chair, the high back pierced and carved with foliage scrolls, and with turned columns, legs and shaped stretchers, lined cane.
- 213 A Jacobean oak chest, the top drawer with moulded and shaped panels, inlaid with star centres and borders in ivory and ebony, the lower drawers enclosed by a pair of folding doors, decorated with similar designs, 40in. wide.
- 214 A Chippendale mahogany serpentine chest of four drawers, with moulded borders, surmounted by a mahogany bookcase, enclosed by trellis glass doors, and with dental cornice, 38in. wide.
- 215 A Chippendale oak corner chair, with shaped open splats and ball turned columns, on square legs.
- 216 A Georgian mahogany oval folding small dining table, on club legs, 42in. wide.
- 217 An old English hall clock, in Chippendale mahogany case, with fluted corners and shaped panels, the hood shaped and carved with borders of conventional designs, and with spiral columns, the silvered dial showing high water at Bristol, by ISAAC HEWLETT, Bristol, 89in. high.
- 218 An old Flemish ebony cabinet, of nine drawers, inlaid with shaped panels of walnut wood, and with ivory borders, brass handles at the sides, 19in. wide.

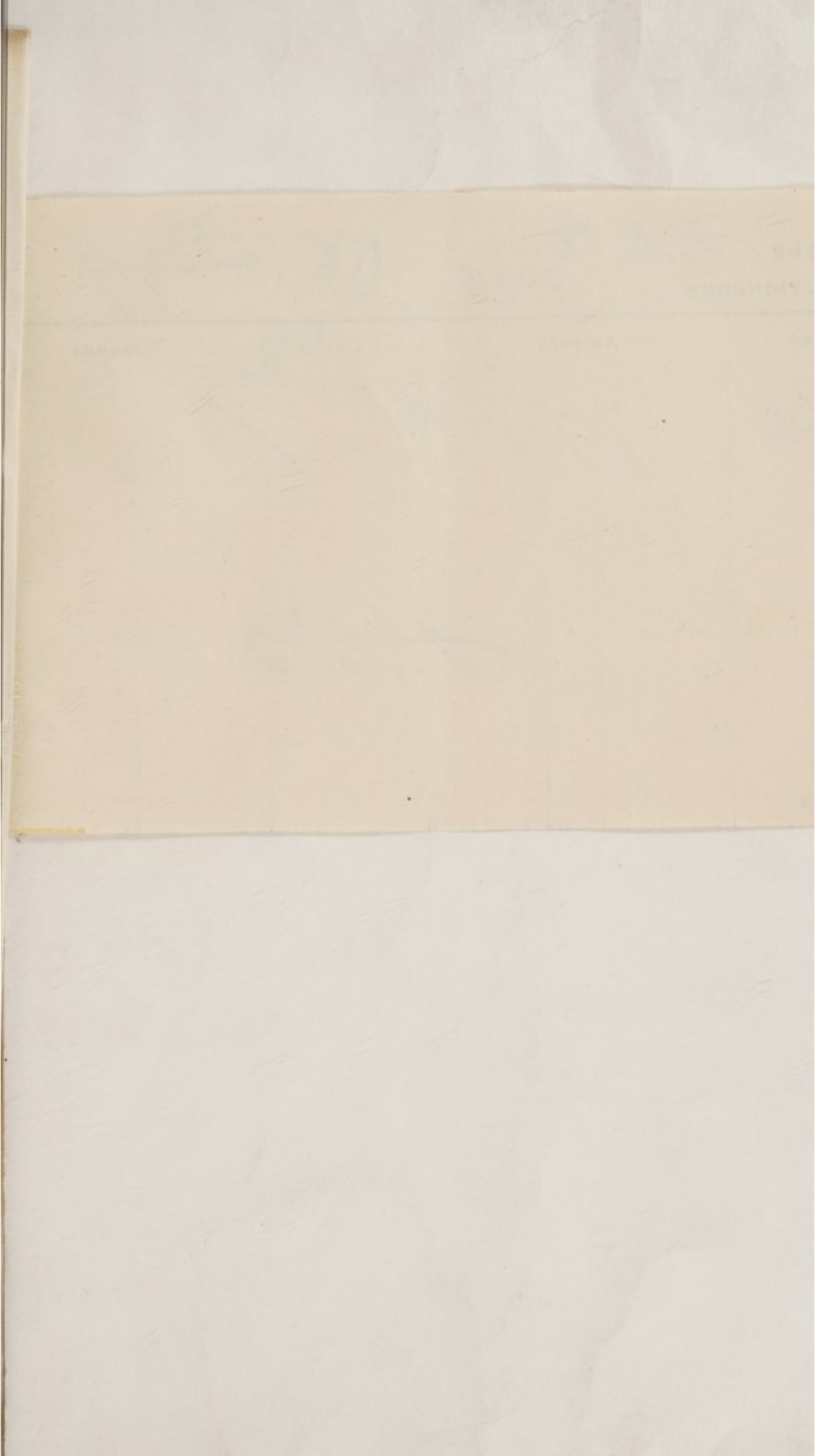
- 218A A Sheraton mahogany Pembroke table, with two flaps, the borders banded with satinwood, and with drawer, on square tapered legs, 32in. *wide*.
- 218B A Georgian mahogany artists' table, with two flaps and rising top, the drawer with writing slide and small compartments, on square reeded legs, 30in. *wide*.
- 218C A French kingwood coffrefort, with rising top and fall down front, enclosing drawers and boxes, and with pierced brass scroll mounts, 17 $\frac{3}{4}$ in. *wide*.
- 219 A Georgian mahogany torchère, on fluted baluster column and tripod support, carved with foliage, on paw feet, 54in. *high*.
- 220 A Dutch walnut marqueterie escritoire, inlaid with vases of flowers and foliage, the fall down front enclosing pigeon holes, etc., a drawer over and a cupboard under, the corners with caryatid female figures, 34 $\frac{1}{2}$ in. *wide*.
- 221 A set of six old Dutch marqueterie chairs, the shaped backs inlaid with figures of halberdiers, and with birds and flowers, on cabriole legs and club feet.
- 222 A Dutch walnut marqueterie china cabinet, inlaid with flowers and foliage, enclosed by a shaped glass door, and with four drawers under, 36in. *wide*.
- 223 Another, inlaid with similar designs, enclosed by a pair of shaped glass doors, and with moulded cornice, the lower part with panelled doors, 58in. *wide*.
- 224 A Dutch walnut marqueterie miniature cabinet, with similar inlay, and with three drawers under, 25in. *wide*.

PERSIAN RUGS.

- 225 A rug, the centre designed with a diamond panel in white on red ground, the corners and borders with conventional decorations, in blue, yellow and red, 6ft. 8in. by 3ft. 11in.
- 226 Another, the centre designed with buildings and trees on ruby ground, the borders with conventional designs in various colours, 4ft. 10in. by 3ft. 7in.
- 227 Another, the centre designed with swastikas, in three medallions on dark red ground, with other conventional designs, 7ft. 10in. by 3ft. 6in.
- 228 A corridor rug, the centre designed with cone pattern on black ground, the borders with conventional foliage and scrolls on white, red and blue grounds, 9ft. 1in. by 3ft. 7in.
- 229 Another, the centre with a shaped panel, on white ground, the borders with conventional scrolls and running foliage on black ground, 6ft. 9in. by 3ft. 11in.
- 230 Another, the centre designed with cone pattern in red on black ground, and with running foliage borders on white and red grounds, 6ft. 6in. by 3ft. 6in.

- 231 Another, the centre designed with trellis pattern on red ground, the border with conventional scrolls in green, red and white on black ground, 6ft. 7in. by 3ft. 7in.
- 232 A Samarkand rug, designed with a medallion and conventional flowers, on light brown ground, the border with rosettes and key pattern, 7ft. 6in. by 4ft. 10in.
- 233 A Bokhara rug, of conventional design, with striped red and blue ground, 6ft. 7in. by 4ft. 2in.
- 234 A rug, designed with flowers in medallions on red ground, the borders with conventional flowers and foliage on red and blue grounds, 6ft. 3in. by 3ft. 7in.
- 235 Another, designed with birds and animals in panels of different colours, on dark blue ground, the borders with flowers, etc., 8ft. 2in. by 5ft.
- 236 A carpet, the centre designed with conventional flowers and trellis pattern on blue ground, the borders with flowers, etc., on red and cream grounds, 12ft. 4in. by 17ft. 8in.

FINIS.



BUYER

H. C. 43

AUCTIONEERS

7098

OK

Date

5/12/19

Lot

Amount

£

s.

d.

62

77 "

✓

Lot

OK

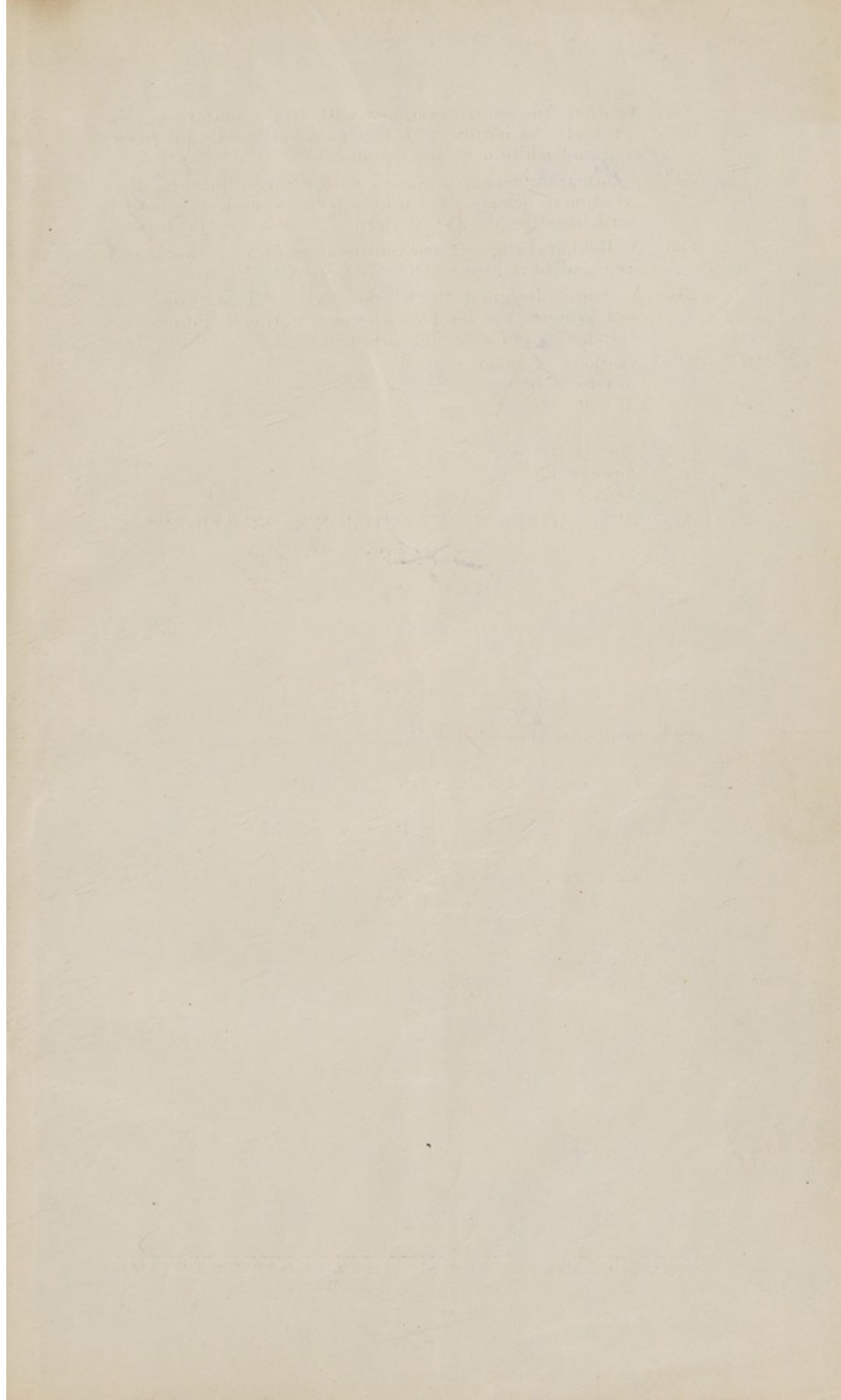
Amount

£

s.

d.

H. C. 43



NOTICES.

MESSRS. PUTTICK & SIMPSON'S FORTHCOMING SALES.

POSTAGE STAMPS, December 2nd and 3rd, also 16th and
17th.

JAPANESE WORKS OF ART, December 4th.

PICTURES, December 10th.

MUSICAL INSTRUMENTS, December 11th.

BAXTER COLOUR PRINTS, December 12th.

PORCELAIN, OBJECTS OF ART AND ANTIQUE FURNITURE,
December 12th and 19th.

SILVER AND JEWELLERY, December 18th.