

## **Sales catalogue: Phillips, Son and Neale**

### **Publication/Creation**

26th September 1932

### **Persistent URL**

<https://wellcomecollection.org/works/tsn5vb6s>

### **License and attribution**

This work has been identified as being free of known restrictions under copyright law, including all related and neighbouring rights and is being made available under the Creative Commons, Public Domain Mark.

You can copy, modify, distribute and perform the work, even for commercial purposes, without asking permission.



Wellcome Collection  
183 Euston Road  
London NW1 2BE UK  
T +44 (0)20 7611 8722  
E [library@wellcomecollection.org](mailto:library@wellcomecollection.org)  
<https://wellcomecollection.org>

*Comins original*  
*26<sup>th</sup> September 1932*  
 1,

PS m/	DATE	INITIALS
SALE	26.14.32	COMINS
PURCHASE		
CHECKED	27.11.32	Ch
COLLECTED	28.11.32	
RECEIVED	28.11.32	JH
ACCESSED		
PASSED		

*Stamp: OCT 1932*

# MANSION

*WA/Hmm/cm/101/15/448*

MONDAY, SEPTEMBER 26th, 1932  
 AT 12 O'CLOCK

Auctioneers  
 Messrs. PHILLIPS, SON & NEALE, LTD.,  
 72, NEW BOND STREET, W.I.

*18.7.26 14 0*





*Comino  
original*

1,

THE REMAINING FURNITURE AND  
**CONTENTS**  
OF THE  
**MANSION**

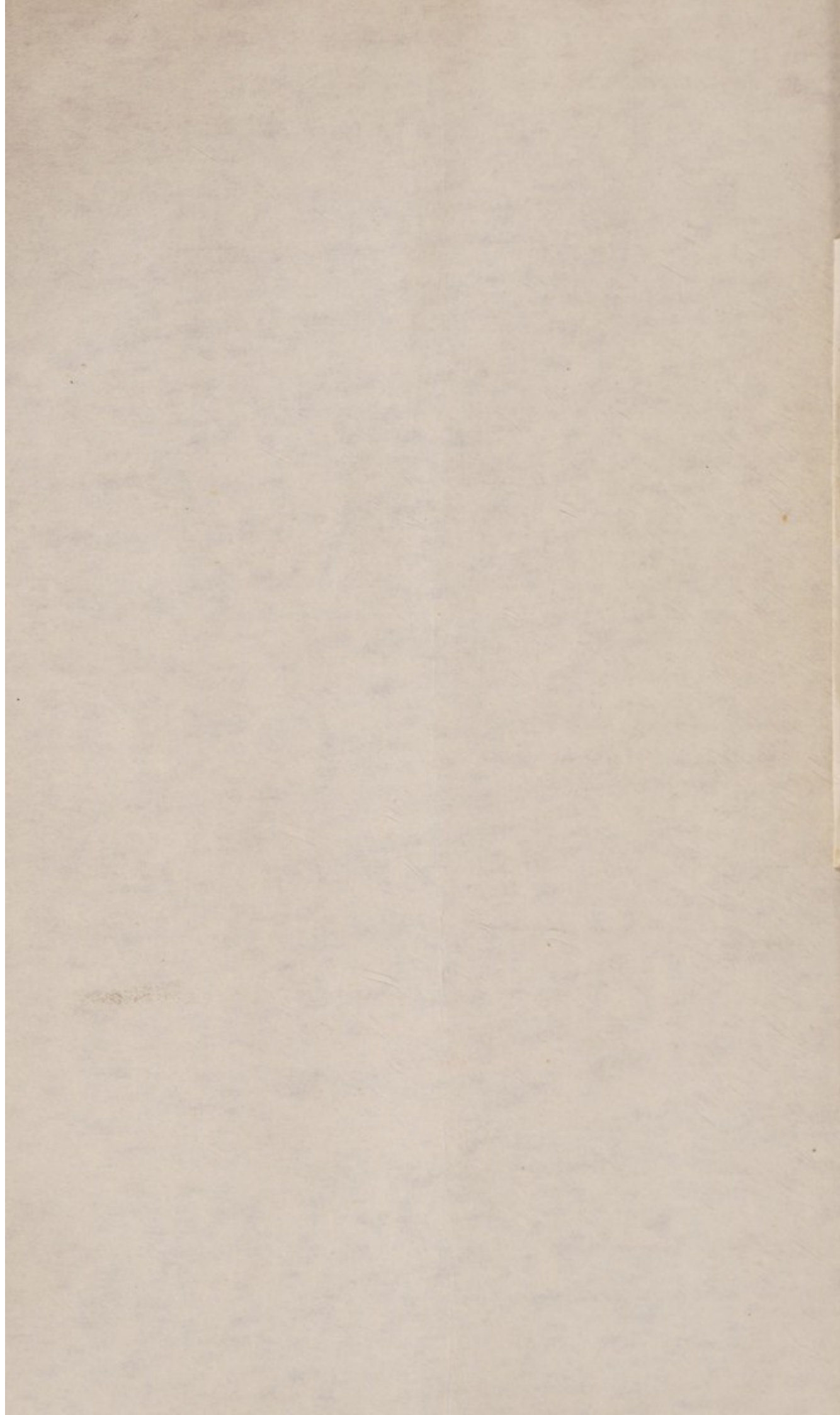
*WA/Hmm/cm/101/15/448*

MONDAY, SEPTEMBER 26th, 1932  
AT 12 O'CLOCK

*Auctioneers*

Messrs. PHILLIPS, SON & NEALE, LTD.,  
72, NEW BOND STREET, W.1.

*Ham 18. = 26 14 0*



DATE	PLACE	AMOUNT	BALANCE	REMARKS
1891				
1892				
1893				
1894				
1895				
1896				
1897				
1898				
1899				
1900				
1901				
1902				
1903				
1904				
1905				
1906				
1907				
1908				
1909				
1910				
1911				
1912				
1913				
1914				
1915				
1916				
1917				
1918				
1919				
1920				
1921				
1922				
1923				
1924				
1925				
1926				
1927				
1928				
1929				
1930				
1931				
1932				
1933				
1934				
1935				
1936				
1937				
1938				
1939				
1940				
1941				
1942				
1943				
1944				
1945				
1946				
1947				
1948				
1949				
1950				
1951				
1952				
1953				
1954				
1955				
1956				
1957				
1958				
1959				
1960				
1961				
1962				
1963				
1964				
1965				
1966				
1967				
1968				
1969				
1970				
1971				
1972				
1973				
1974				
1975				
1976				
1977				
1978				
1979				
1980				
1981				
1982				
1983				
1984				
1985				
1986				
1987				
1988				
1989				
1990				
1991				
1992				
1993				
1994				
1995				
1996				
1997				
1998				
1999				
2000				
2001				
2002				
2003				
2004				
2005				
2006				
2007				
2008				
2009				
2010				
2011				
2012				
2013				
2014				
2015				
2016				
2017				
2018				
2019				
2020				
2021				
2022				
2023				
2024				
2025				
2026				
2027				
2028				
2029				
2030				
2031				
2032				
2033				
2034				
2035				
2036				
2037				
2038				
2039				
2040				
2041				
2042				
2043				
2044				
2045				
2046				
2047				
2048				
2049				
2050				
2051				
2052				
2053				
2054				
2055				
2056				
2057				
2058				
2059				
2060				
2061				
2062				
2063				
2064				
2065				
2066				
2067				
2068				
2069				
2070				
2071				
2072				
2073				
2074				
2075				
2076				
2077				
2078				
2079				
2080				
2081				
2082				
2083				
2084				
2085				
2086				
2087				
2088				
2089				
2090				
2091				
2092				
2093				
2094				
2095				
2096				
2097				
2098				
2099				
2100				



BUYER

*Comins*Date *Sep. 26<sup>th</sup> 1932*

AUCTIONEERS

*P.S. & N. 1. Pembroke Sq.*

Lot	Amount			Lot	Amount		
	£	s.	d.		£	s.	d.
170	5	5	.				
171	4	15	.				
247/249	14	14	.				
257	2	.	.				
	$\frac{1}{2}$ 26	14	.				

500 page 23  
Sale No. 12,141

*By Direction of the Owner, in Consequence of the Disposal of the Freehold*

---

**1, PEMBRIDGE SQUARE,  
BAYSWATER, W.**

---

**A CATALOGUE  
OF THE REMAINING FURNITURE AND  
Contents of the Mansion**

INCLUDING

A FINE GRAND PIANOFORTE BY STEINWAY & SONS ;  
AN UPRIGHT PIANOFORTE BY KOHL, HAMBURG ; THE  
FRENCH FURNITURE OF THE DRAWING ROOM ; AN  
IRON SAFE BY CHUBB ; AN OAK CYLINDER WRITING  
DESK ; OIL PAINTINGS OF THE ENGLISH SCHOOL ;  
DRAWINGS AND PRINTS ; CARPETS ; CURTAINS ;  
NATIVE CURIOS AND WEAPONS ; PORCELAIN ; A  
CHINESE SILK SCREEN ; BOOKS ; IVORIES, ETC., ALSO  
ANOTHER PROPERTY REMOVED FROM MAPESBURY  
ROAD, N.W.

WHICH MESSRS.

**PHILLIPS, SON & NEALE**  
LIMITED

BERTIE P. NEALE.

G. RUSSELL-HAY.

Are Instructed to Sell by Auction, on the Premises

**On Monday, September 26th, 1932**

**AT TWELVE O'CLOCK**

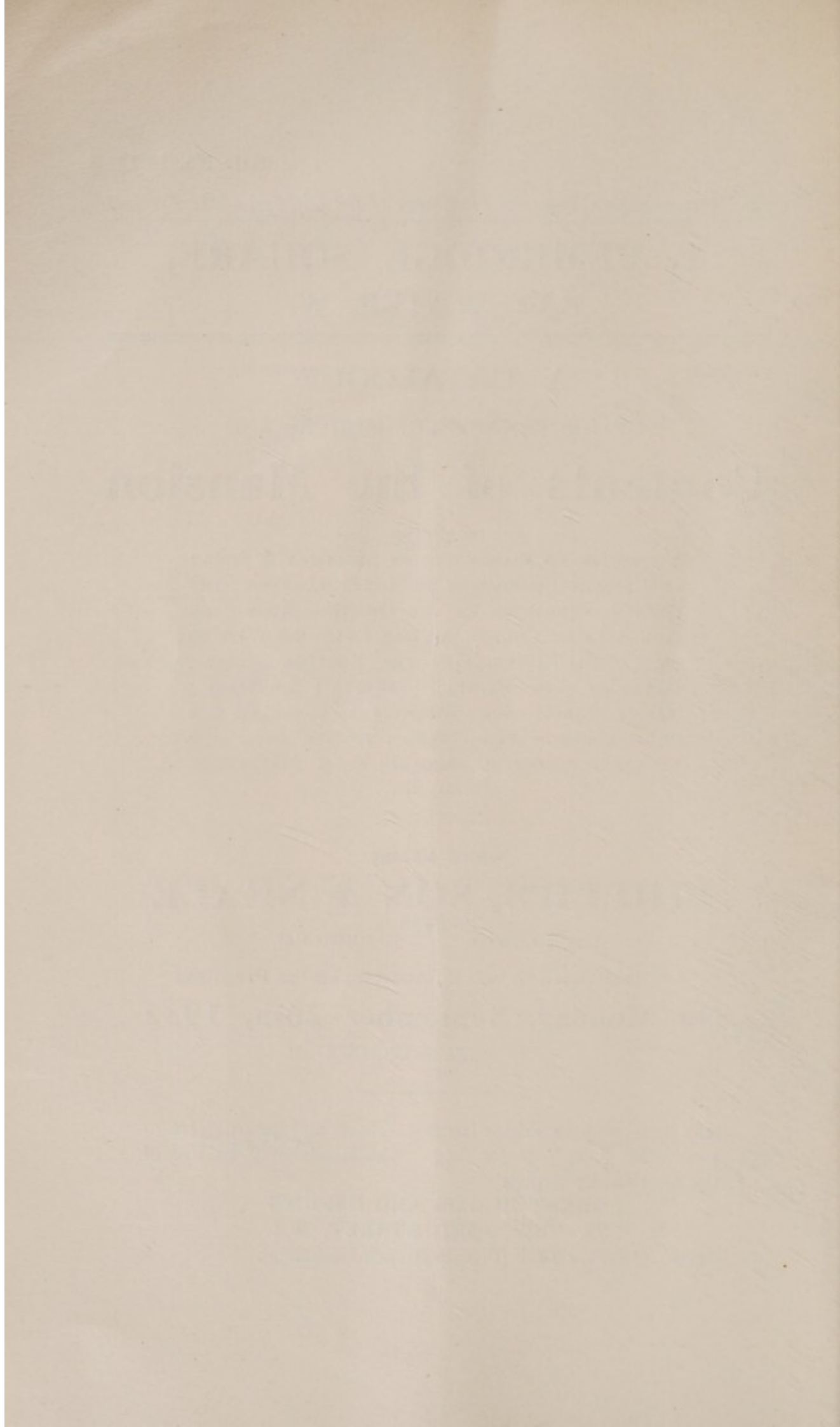
May be viewed the Friday (10 to 5 o'clock) and Saturday (10 to  
4 o'clock) preceding the Sale. Catalogues may be had of  
the Auctioneers at their

**GREAT ROOMS AND OFFICES**

**72, NEW BOND STREET, W.1.**

Telephone : MAYFAIR 2425 (Private Branch Exchange).





## CONDITIONS OF SALE

FIRST.—The highest bidder to be the buyer ; and if any dispute arise between two or more bidders, the lot so in dispute shall be immediately put up again and re-sold.

SECOND.—No person to advance less than 1s. ; above five pounds, 5s. ; and so on in proportion.

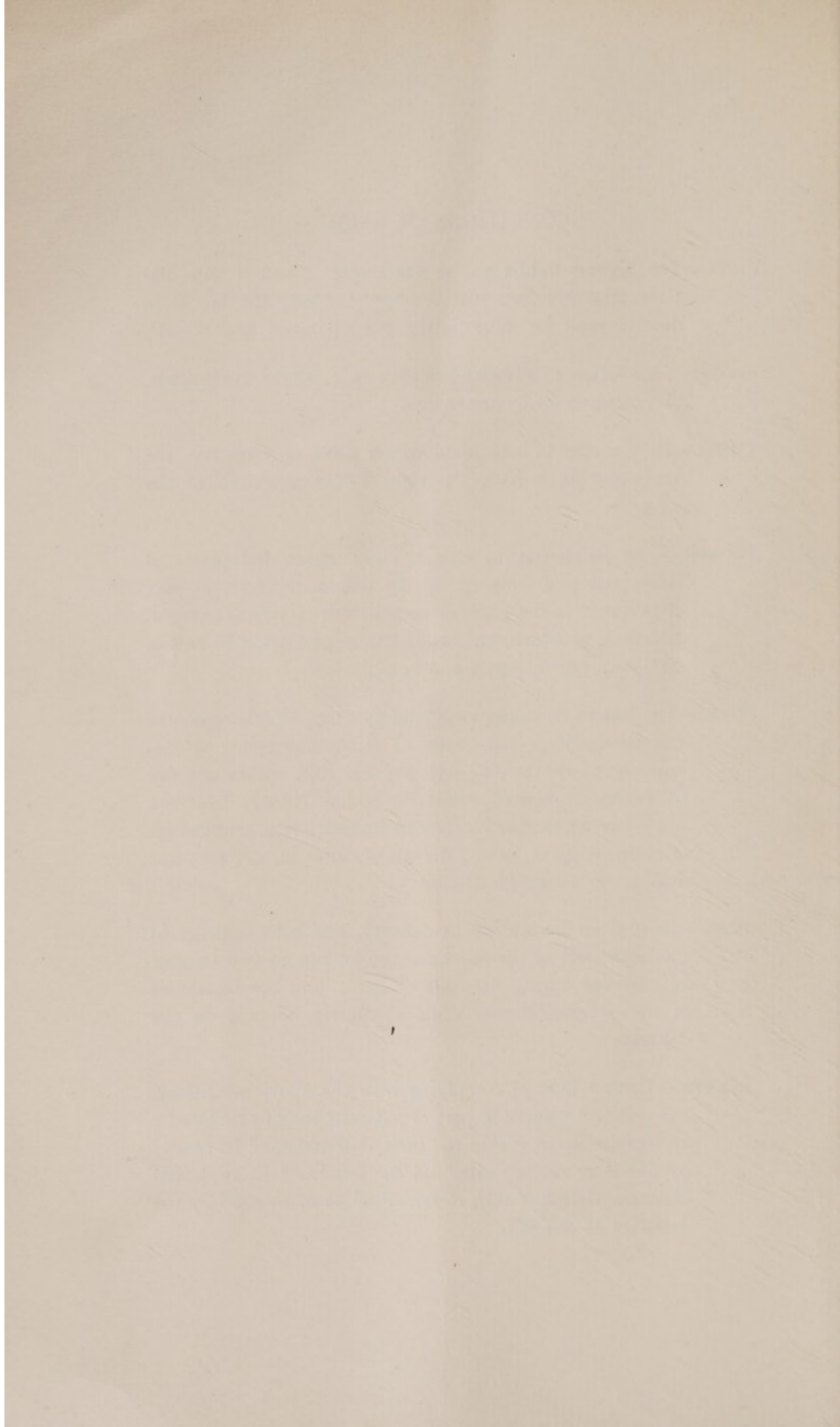
THIRD.—In the case of lots upon which there is a reserve, the Auctioneer shall have the right to bid on behalf of the seller.

FOURTH.—The purchasers to give in their names and places of abode and pay down 5s. in the pound, or more, in part of payment, or the whole of the purchase-money, *if required*, in default of which, the lot or lots so purchased to be immediately put up again and re-sold.

FIFTH.—The lots to be taken away and paid for, whether genuine and authentic or not, with all faults and errors of description, at the buyer's expense and risk, within *one day of the sale* ; Messrs. PHILLIPS, SON & NEALE, LIMITED, not being responsible for the correct description, genuineness or authenticity of, or any default or defect in, any lot ; and making no warranty whatever.

SIXTH.—To prevent inaccuracy in delivery, and inconvenience in the settlement of the purchases, no lot can on any account be removed during the time of sale ; and the remainder of the purchase-money must absolutely be paid on the delivery.

SEVENTH.—Upon failure of complying with the above conditions, the money deposited in part of payment shall be forfeited ; all lots uncleared within the time aforesaid shall be re-sold by public or private sale, and the deficiency (if any), and expenses attending such re-sale, shall be made good by the defaulter at this sale.





Messrs. PHILLIPS, SON & NEALE LIMITED will not be responsible for any goods left, either by Buyer or Seller, more than one day from the date of Sale.

---

## CATALOGUE

---

MONDAY, 26th SEPTEMBER, 1932

AT TWELVE O'CLOCK

---

### *Top Floor, Secondary Bedrooms*

- 1 The square-pattern parquet linoleum as planned to 2 bedrooms and landing and half-landing, and the diamond-pattern ditto in 24 square yards
- 2 A grained table with drawer, 2 oil heating stoves, 2 towel airers, cane-seat chair, linen basket, green-painted washstand, toilet ware and glass in 9 pieces, 2 pieces of carpet, and a white painted chest of 5 drawers
- 3 A 3ft. mahogany gaming table with lift-up concave chess-board top, 2 flaps lined green baize, a roulette board, set of chessmen, and a set of draughts, in mahogany boxes
- 4 A 3ft. brass and iron bedstead, roll spring mattress, 2 overlays, bolster, pillow, 2 blankets, sheet, white quilt, 3 strips of carpet, a bamboo dressing table, and a ditto chair
- 5 Two green-painted washstands, odd toilet ware and glass in 10 pieces, 2 cane seat chairs, 2 towel airers, a grained chest of 5 drawers, linen basket, a birch toilet mirror, 2 iron fenders, and 2 pictures
- 6 A 2ft. 6in. iron bedstead, roll spring mattress, 2 overlays, bolster, pillow, 2 blankets, white quilt, 2 grained chests of 5 drawers, and a 2ft. white-enamelled single wardrobe

- 7 A 3ft. iron bedstead, wire mattress, overlay, bolster and pillow, corner linen basket, wicker armchair, 2 cushions, painted washstand, toilet ware and glass in 8 pieces, mirror in bamboo frame, gipsy table, 2 carpet strips, 2 bedroom chairs, a painted chest of 5 drawers, and 2 rolls of stair carpet
- 8 A 3ft. iron combination bedstead, a brass and iron ditto, a grained chest of 5 drawers, brass coal purdonium and scoop, iron fender, white-painted table with marble top and drawer, and 2 sets of fire irons
- 9 Two painted washstands, 2 towel airers, a fretwork machine, wrought iron umbrella stand, 2 bundles of flags, 6 brass and iron fire implements, toilet ware in 7 pieces, a pair of brass wall brackets, 2 others, electric iron, and an oil stove
- 10 Two trunks containing rolls of wallpaper, a white painted mirror stand, a hurdy-gurdy box, reading stand (a.f.), bronzed bowl, and a large quantity of roller and sun blinds
- 11 A mahogany panelled door, a white enamelled glazed ditto, 2 hip baths, a travelling ditto, a glazed show case, 5 trunks, 3 hampers, a toilet mirror, and sundries
- 12 A doll's house, a wicker cradle, a child's game board, and a quantity of child's toys
- 13 Two pairs of green silk damask curtains with holders

*2nd Floor, Right Bedroom*

- 14 The nearly new brown linoleum as laid, 14ft. × 10ft., in about 15 square yards
- 15 A 3ft. 3in. oak chest of 2 short and 3 long drawers
- 16 An upholstered wicker armchair with cushion, a box ottoman, a 13in. oak octagonal table, a toilet mirror in oak frame, and a waste paper basket



- 17 A 2ft. 9in. oak chest of 2 drawers with cupboard under
- 18 A 3ft. walnut-wood wardrobe enclosed by mirror door
- 19 A 3ft. yellow painted bedstead with spring and overlay, and a stained dressing stool with stuffed seat

*2nd Floor, Work Room*

- 20 The brown-ground and floral linoleum as laid in about 25 square yards, and the green-ground and floral linoleum as planned to 2nd floor landing
- 21 A deal table top on 4 trestles, a brass rail fender, adjustable reading stand, bentwood chair, brass electric table lamp, and 4 yellow-striped curtains with valances
- 22 A 3ft. mahogany circular table with pierced frieze and spindle column supports, shelf under
- 23 A 3ft. white-painted wardrobe enclosed by panel door, a dressing table, fitted drawer, and an overmantel
- 24 A pair of 3ft. brass bedsteads
- 25 A pair of 3ft. ditto
- 26 A 3ft. ditto, a small Axminster carpet, and 2 blankets
- 27 A 3ft. blue-painted wardrobe enclosed by panel door
- 28 A 2ft. 6in. painted table, a white enamelled chest of 5 drawers, cane seat chair, folding hat rack, a dressmaker's model, and 2 walnut bedroom chairs

*2nd Floor, Left Front Bedroom*

- 29 An iron fender, white-painted cupboard, toilet ware in 8 pieces, a pipe rack, 2 silver-mounted brushes, in case, a 2-fold fire screen, an inlaid rosewood overmantel, and sundries



- 30 An old Persian rug, figured and bordered, on red ground, 6ft.  $\times$  3ft. 4in.
- 31 A set of 6 coloured prints—Cries of London, a pair of miniature water-colour drawings, R.M.—Sailing Vessels, and a pair of engravings—L' Affaire d'Honneur, La Reconciliation, after Emile Bayard
- 32 A 5ft. brass French bedstead
- 33 A walnut-wood bedroom suite, comprising :— a 6ft. 6in. wardrobe enclosed by 2 mirror doors with drawers and cupboard in the centre, a dressing table, fitted 5 drawers, swing mirror over, washstand with marble top, pedestal cupboard, towel airer, and 2 cane seat chairs
- 34 A walnut-wood overmantel, a hanging ditto, and sundry pictures and frames
- 35 A bordered and floral Turkey carpet,        ft.  $\times$         ft.

*2nd Floor, Linen Room and Store Room*

- 36 The brown figured linoleum as planned, a 9ft. stained-as-mahogany store cupboard, fitted with shelves, enclosed by 3 panelled doors
- 37 A painted table, a large painted trunk stand, cane-seat chair, an extending electric table lamp, and a painted table
- 38 A glazed show case containing :— sundry fossils, antique pottery and bric-a-brac (44 pieces)

*Left Bedroom*

- 39 A white-painted bedroom suite, comprising :— a 6ft. wardrobe enclosed by 2 panel and centre mirror doors, a dressing table, fitted 2 drawers, mirror over, washstand, fitted 2 drawers, marble top, tree-back, 3 chairs, and a towel airer

- 40 A 3ft. ditto bedstead with wire spring and overlay
- 41 A chest of 4 long and 2 short drawers, a stick stand, and a mirror in painted frame
- 42 Two strips of carpet, and a small Turkey carpet
- 43 A 4ft. 6in. brass bedstead, box spring mattress and overlay, and a 9ft. green painted linen cupboard enclosed by 4 panelled doors
- 44 A child's playground, an oak easel, an open bookrack, a 4ft. painted cupboard with 3 shelves, a ditto chest of 5 drawers, and a nest of 10 drawers
- 45 A japanned deed box, 3 filing cabinets, brass inkstand with 2 receivers, a small oak smoker's cabinet, and a maplewood stationery cabinet with plated mounts, on paw feet
- 46 A 4ft. pink painted wardrobe decorated with flowers, enclosing trays and drawers
- 47 A gentleman's 4ft. painted cream wardrobe, fitted with trays and 4 drawers under
- 48 An 11ft. ditto hanging wardrobe enclosed by 6 panelled doors
- 49 A 6ft. grained hanging cupboard enclosed by 2 panelled doors
- 50 Six pairs of lace curtains
- 51 A similar lot
- 52 A similar lot
- 53 A similar lot
- 54 A similar lot
- 55 Fourteen lace curtains, various, and a bundle of oddments

- 56 Two pairs of brick-red ground and floral tapestry curtains with valances, lined, and cord holders
- 57 Three floral cretonne curtains, lined, with bob fringe, 2 yellow and gold tapestry curtains, lined, with bob fringe, with valances and cord holders
- 58 One large pair of floral tapestry curtains, a smaller pair of ditto, and a ditto portiere curtain (cut)
- 59 A large crimson portiere curtain, sundry furniture covers and oddments, and 12 pieces of odd carpet
- 60 Two oak cigar cabinets
- 61 A baize game board, 2 pairs of boxing gloves, 2 swords in sheaths, 3 fencing foils, 2 face guards, a butterfly net, an ottoman couch in floral cretonne, a 2-fold screen, wicker hamper, and 4 travelling trunks
- 62 A fibre trunk containing carnival costumes and various adornments
- 63 A picnic outfit in wicker basket, a trouser press, a printer's out-fit, a jig-saw puzzle in box, 2 bicycle pumps, leather box of counters, a camera tripod, and sundries
- 64 A fishing rod and tackle, 5 Indian clubs, a set of 6 cricket stumps, and a magic lantern with accessories
- 65 A student's chemical outfit in case, a box of paints, a set of chessmen, draughts and dominoes, with board in mahogany box, an amboyna and maplewood casket on carved fern feet, 3 pairs of roller skates, 3 pairs of ice skates, an air gun, and a box containing Goss Crest china in pieces
- 66 A dwarf 4-leaf screen in tapestry, and 2 others
- 67 Fourteen face towels, 6 rough ditto, 2 bath towels, 11 pillow slips, 2 sheets, and 3 Doppel Punkt rollers, in boxes



- 68 An ormolu timepiece with cupid surmount, the dial surrounded with cut stones, and a pair of ditto candlesticks, forming a garniture de cheminée
- 69 Eleven Continental cups, 10 ditto saucers, a ditto sugar basin, painted with flowers, cloisonné enamel ware in 6 pieces, a pair of Fleur de Lys vases, and sundry odd china in pieces
- 70 Five white counterpanes, 2 lace ditto, 3 eiderdowns, 15 blankets, various, 2 odd pieces, bolster, 2 pillows, 3 lace toilet covers, leather cushion cover, 2 grey blankets, and a red-ground Turkey table cover
- 71 One pair of crimson repp curtains, 2 pairs of trellis pattern ditto, and a large portiere with tapestry border

*2nd Floor, Half Landing, Nursery*

- 72 The brown cord carpet as planned, iron fender, 2 fire implements, toilet ware and ornaments in 12 pieces
- 73 A child's 2ft. 3in. white enamelled combination bedstead, and an all-brass ditto, each with overlay and pillow
- 74 A 3ft. inlaid mahogany washstand with rouge marble top, and a 3ft. iron combination bedstead, 3 bolsters and 3 pillows
- 75 A 3ft. shaped burr walnut and inlaid card table with folding top, lined red baize, a 3ft. chest of 2 short and 3 long drawers, and a white painted table with 2 drawers

*1st Floor, Main Bedroom and Dressing Room*

- 76 The crimson floral Axminster carpet as laid, 22ft. × 10ft. 6in.
- 77 Two pairs of floral bordered lace net curtains, a 25in. stained octagonal table, 2 cane-seat chairs, a cut-glass toilet jug and basin, various glass in 7 pieces, and 2 brass electric wall brackets

- 78 A 4ft. 6in. inlaid rosewood pedestal washstand with rouge marble top and triple bevelled mirror and tiled back, 2 cupboards and 3 drawers under
- 79 A 5ft. brass fender, pair of ditto fire dogs, 3 fire implements, brass coal cauldron, and a brass mounted wire guard
- 80 A 3ft. dark oak bedstead, wire spring mattress, overlay, bolster, pillow, blanket and 2 sheets
- 81 A 3ft. brass bedstead, box spring mattress, 2 sheets, and 2 motoring rugs
- 82 The scarlet linoleum surround as planned, piece of felt, iron fender, a stained octagonal table, small oak box with brass mounts, spirit flask in leather case, a quantity of wire dress-hangers, and a cane-seat chair
- 83 A 21in. rosewood and inlaid pedestal cabinet, enclosed by panelled door, small bevelled mirror back
- 84 An 8ft. mahogany breakfront wardrobe with hanging compartments, enclosed by 2 panelled doors, the centre fitted with 4 trays and 4 drawers (no centre door attached)
- 85 A 2ft. 10in. mahogany and inlaid satinwood dressing table with drawer and swing mirror over, and a ditto triple-top towel airer
- 86 A stained octagonal table linen basket, odd toilet ware — pieces
- 87 A 3ft. iron combination bedstead with overlay, folding chair, adjustable chair with 2 cushions, and a commode
- 88 A 6ft. stained fitted wardrobe enclosed by 2 panel doors

#### *Left Bedroom*

- 89 The green cord carpet, 12ft. × 11ft., a brass fender, pair of ditto dogs and 4 fire implements, a pair of brass electric wall brackets for 2 lights each, and a ditto pendant light



- 90 A gentleman's 22in. mahogany dressing stand with shaving mirror, drawer and cupboard
- 91 A white enamel linen cupboard with shelves

### *Bedroom*

- 92 A 4ft. white enamelled dressing table with glazed cupboards and 2 drawers, swing mirror over, a ditto towel airer, 2 ditto bedroom chairs, and a cream painted washstand with drawer
- 93 A 3ft. 6in. white enamelled chest of 4 long and 2 short drawers, a ditto chair with cane seat, 3 pairs of pink silk rep curtains, and an overlay
- 94 A white enamel overmantel, a ditto hat and coat stand, a mahogany washstand with marble top, a proof engraving after De Blaas, and a drawing—Philosophers Squaring the Circle, by W. Mulready

### *Three Bathrooms*

- 95 Four umbrellas, 8 walking sticks, 4 brass water cans, a quantity of photographic material, the linoleum as planned to 2 bathrooms (2 patterns), a white painted cane-seat chair, and a bath mat
- 96 A white enamelled enclosed washstand with marble top, 2 ditto medicine cupboards, a ditto framed chimney glass with triple bevelled mirror panels, and a white enamelled cabinet with mirror door
- 97 A bronze model of Nelson's column
- 98 A bevelled frameless wall mirror, and a mahogany corner cupboard
- 99 A pair of rosewood card tables, the tops lined green baize, on pillar and quadruple support



- 100 A pair of 3ft. Bombay carved mahogany pedestals with octagonal sunk marble tops

*1st Floor, Library*

- 101 Two brass and iron fenders, a pair of ditto dogs, 3 fire implements, 2 coal purdoniums and scoops, an Axminster hearthrug, 2 pieces of blue pile carpet
- 102 Two pairs of brown velvet curtains with band holders
- 103 Two pairs of ditto
- 104 One pair of ditto
- 105 A 5ft. 6in. Chesterfield settee upholstered in saddlebags with loose cretonne cover
- 106 A high-backed winged easy chair in brown leather with loose squab
- 107 A 2ft. 9in. carved oak open bookcase with 5 shelves
- 108 A 27in. carved oak oblong table on tapering legs
- 109 A 4ft. 6in. carved oak pedestal writing desk with fall-front enclosing 5 pigeon holes and 6 drawers, 4 wells and writing slope, and 6 drawers under
- 110 A mahogany revolving library armchair with circular back and seat in green morocco
- 111 A pair of carved ladder-back mahogany armchairs with cane seats and fluted legs
- 112 A deep-seated tub-shaped armchair upholstered in brown leather
- 113 A shaped bevelled wall mirror in ivory frame, carved with crest, sea serpents, mask-heads and cupids on a foliated ground

- 114 Two brass snake electric wall brackets for 2 lights each, a brass music stand, a mahogany pedestal cupboard, an open hanging corner bookshelf and sundry wireless parts
- 115 A set of 25 motoring maps in leather case, and a mahogany letter rack
- 116 A Chinese gilt and lacquer work box with interior ivory fittings
- 117 A bevelled chimney glass, 50in.  $\times$  43in., in oak frame, carved with fruit and figures of musicians
- 118 An 18in. sculptured alabaster group of 2 allegorical figures on a square plinth

*1st Floor, Half Landing, Study and Staircase*

- 119 The brown pile carpet as laid, 2 brass jardinieres, a pair of oval cut-glass girandoles (a.f.), an 8in. Spode plate, and an oak book stand, three green velvet and braided pelmets
- 120 A carved Bombay jardiniere stand with quadruple snake supports
- 121 A 3ft. 3in. oak hanging wall bracket with embossed and studded leather panel supporting a 12in. old brown earthenware bottle
- 122 A 4ft. 3in. carved oak hanging cupboard, fitted sliding door, shelves and bookrack
- 123 A hunting knife in leather scabbard, another in metal scabbard, 2 postage albums in morocco bindings, and a 17in. mahogany casket
- 124 The 27in. crimson figured and bordered Axminster stair carpet from 2nd floor to 1st floor half landing in 13 yards, and 3 landing pieces as planned to 1st floor landing, corridor and half landings, and 26 brass stair rods

- 125 The 3ft. ditto stair carpet from ground floor to study landing  
in 11 yards and 22 brass stair rods

*Study*

- 126 A blue Wilton pile carpet          ft. ×          ft.  
127 A 3ft. mahogany and inlaid bureau with fall flap and 3 drawers  
under

*1st Floor, Half Landing*

- 127A A brass curb, pair ditto fire dogs, 4 implements, ditto electric  
floor lamp and shade, and an oak adjustable chair with  
2 loose cushions

*Entrance Hall*

- 128 A bordered Persian carpet with crimson Axminster pile  
surround, 7ft. × 6ft.  
129 A grizzly bear on wood stand, supporting a tray  
130 A grandfather's clock by Christopher Goddard, London, with  
ormolu and silvered dial in lofty carved black oak case,  
chiming action  
131 An India-rubber door mat, an oak angle umbrella stand,  
a mirror and brush fitment, a mahogany semi-circular  
corner cupboard, a triple-towel rail and a mahogany hall  
chair

- 132 An 18in. gong on oak stand

- ~~133 A 38in. gilt bronze draped figure, fitted for electric light,  
on circular plinth~~

*The Drawing Room*

- 134 A 5ft. burnished brass fender, a pair of ditto fire dogs, and a  
set of fire implements



- 135 A Puma-skin rug, a black bear ditto, a brown antelope ditto, with head, and an Opossum skin rug

THE DRAWING ROOM FURNITURE IN EBONIZED  
AND THUYA WOOD, INLAID WITH TULIP-WOOD

COMPRISING :—

- 136 A lofty overmantel with large bevelled shield shaped centre mirror and 7 smaller mirrors
- 137 A pair of smaller overmantels
- 138 A 6ft. cabinet with lofty back, fitted with bevelled shield shaped mirror and 7 smaller mirrors, the lower part with 2 drawers, recess and cupboard under, the whole mounted with Sèvres porcelain plaques of court beauties and cupids, ormolu mounts
- 139 A 4ft. 6in. bonheur-de-jour, en suite
- 140 A 5ft. settee upholstered in silk floral brocade, en suite, with loose covers
- 141 A pair of open arm easy chairs, en suite, with loose covers
- 142 A set of 4 occasional chairs and 2 low seated chairs, en suite, with loose covers
- 143 A 36in. card table with folding top lined maroon cloth, en suite
- 144 A 22in. music canterbury, en suite

- 
- 145 A 7 $\frac{1}{4}$  OCTAVE GRAND PIANOFORTE BY STEINWAY AND SONS, NEW YORK AND HAMBURG, NO. 86110, IN FINE ROSE-WOOD CASE

- 146 An 18in. carved mahogany bijouterie table with plate glass top, shelf under, fretwork gallery

- 147 *A Louis XV display cabinet* in rosewood and kingwood with Vernis Martin panels of landscapes and sporting subjects, bent glass doors, 2 glass shelves, and ormolu mounts
- 148 *A carved and gilt screen with 3 leaves*, the centre with a large panel in silk needlework depicting Chinese garden scenes with mandarins, girls and pagodas in the distance, the side wings covered in old gold velvet
- 149 An inlaid rosewood and marqueterie armchair with ivory scrolls, upholstered in green floral silk damask
- 150 A similar chair
- 151 Another, with wheel back
- 152 A 24in. ebonized Sutherland table, a curb fender, a 16in. Sèvres tray, a large velvet and silk portfolio, and sundry games
- 153 A gros bleu Sèvres bowl painted with groups of figures in panels, and floral wreaths, 12in. diameter
- 154 A larger bowl, oviform, 18in. diameter
- 155 A table mirror of ivory, shaped bevelled plate on spiral supports on 14in. serpentine base, fitted with drawer in compartments
- 156 A collection of 25 ivory and miniature groups depicting native craftsmen
- 157 A carved ivory model of a boy playing a flute on plinth, 6½in. high, and a 5½in. ivory casket
- 158 Five carved ivory figures, one ditto—Rats in a group, 2 whist markers, a tablet with stand supports, and 6 other pieces of ivory
- 159 Three ditto figures and 3 netsukies



- 160 An 8ft. Louis XV Boulle and tortoiseshell cabinet enclosed by  
panelled doors under with ormolu mounts and mirror  
back with ormolu cherubs in relief *9 gms*  
*Barri*
- 161 A garniture du cheminée by Mason Marnyhas, Paris, in  
massive ormolu case with wreath surmount, and a pair  
of 9-light ditto candelabra with bronze female figure  
supports *14 gms*  
*Clarke*
- 162 A pair of onyx pedestals with revolving caps and ormolu  
mounts *4/15/-*  
*Clarke*
- 163 A pair of bronze figures by Deniere—Shakespeare and Milton *6/10/-*  
*Bentley*
- 164 A pair of bronze fauns supporting 2-light ormolu candelabra  
on marble bases *3/9/-*  
*Jackson*
- 165 A pair of bronze female figures on rouge marble bases *40/-*
- 166 A bronze classical group, signed Salli, on oval marble base *10 gms*
- 167 A pair of china 2-handled vases painted with views on pedes-  
tals, and a pair of Parian female figures *2 gms*  
*Rogers*
- 168 A plain blue Wilton pile carpet, ft. × ft. *5/10/-*
- 169 A Louis XVI 3-fold gilt screen with musical trophies and  
brocade panels *2*
16. *16* 170 A marble group—The Three Graces, on plush covered pedestal
- 4/15/-* 171 A pair of green marble pedestals with font tops, and a marble  
bust of a draped female
- 172 A pair of malachite vases and covers with ormolu mask-head  
handles *22/6*
- 173 A pair of taller ditto with ormolu snake handles, on square  
bases *32/6*  
*Collings*
- 174 A pair of Capo de Monte ewer shape vases *2/15/-*  
*do.*



- 175 A Dresden group, Capo de Monte vase, Dresden group candlestick, plaster group of 2 figures (a.f.), pair of blue and white octagonal vases, carved wood model of a cow, a porcelain plaque, and a 2-handled tray

*14/10*  
*Willis*

- 176 A pair of Dresden vases painted with flowers and seascapes, with ormolu mounts

*4/12/-*

- ~~177~~ A large Bengal tiger-skin rug mounted with head and claws

*Willis*  
*13/-*

- 177A Two brass frames, 11 brass ash trays, ivory chessmen in 32 pieces, and a turbot fish dish, on stand

*30/-*

- 178 A pair of Louis XV gilt fauteuils upholstered in trellis pattern silk brocade worked with flowers, with loose covers, and a gilt settee, en suite

*15/-*

- 179 A set of 4 single chairs, covered en suite, and loose covers

*3/12/-*

- 180 A Louis XV gilt angle chair upholstered in floral silk brocade, and a pair of Louis XVI walnut and gilt single chairs with cane seats and backs with loose covers

*2/6/-*

- ~~181~~ A pair of Empire mahogany pedestals with ormolu mounts and sunk marble tops

*32/6*  
*Austin*

#### PICTURES AND DRAWINGS

- 183 Dutch School—A Landscape with Covered Wagons, Horses, Figures, and Cattle

*2/10/-*

- 184 English School—An extensive Landscape with River, 53in. x 38in.

*Harding*  
*38/-*

- 185 Ditto—A Forest Scene

*Passed*

- 186 Italian School—The Virgin and Child, oval

*28/- Harding*

- 187 Holman Hunt—A Gipsy seated by a fire, water-colour drawing, 13in. x 11in.

*6/-*

188 David Cox—A Stormy Landscape with bivouac, water-colour drawing, 11in. × 8in.

189 David Linnell—A Landscape with Windmill, water-colour drawing, 6 $\frac{3}{4}$ in. × 4 $\frac{3}{4}$ in.

190 F. P. Dulach, 1784—A Portrait of an Old Lady, in red chalk

191 French School—A French Salon with numerous Figures dancing

192 Pannini—A Landscape with ruins, 38in. × 28in.

193 English School—A  $\frac{3}{4}$ -length Portrait of a Lady in carved and gilt frame

194 R. Wilson (School of)—An extensive Landscape, 56in. × 40in.

195 Charles J. de Lacy—A Harbour Scene with Sunset

30: 196 David Roberts, 1829—The Departure of the Israelites from Egypt

198 W. Mulready—Bathing Girl, crayon drawing

199 James Webb—A Rocky Coast and Lighthouse, and Shipwreck, 58in. × 34in.

200 Vandyck (School of)—A Portrait of King George I with charger, 30in. × 21in.

201 An engraving—Classical Subject, the Return of Persephone, engraving, after Leighton and 2 etchings—2 Portraits of Statesmen

202 A set of 3 engravings by Aubrey Beardsley—The Coiffeur, a similar subject, and a rout

203 A collection of 10 caricatures in colours—John Bull, 18th Century

14/-

no bid

Passed

3/12/

Salvin.

3/12/

Passed

Harding

50 Gns

White



- 204 A pair of photogravures after Fred Morgan, a small oil-painting—Landscape, three Bartolozzi prints and—other pictures, various
- 205 A pair of oilpaintings—Landscapes, and a bevelled mirror in gilt frame
- 206 J. Locker—Landscape with Horses, Figures, and stream, a pair
- 207 George Morland, 1763-1804—Exterior of a Barn with Figures

### BOOKS

- 208 Everyman's Library (18), Nelson's Publications—French Classics (14) 32 vols.
- 209 Oxford's Poetical Works (11), Shakespeare's Works, and other poetical works (15) 27 vols.
- 210 Indoor Games and Recreations, novels and miscellaneous (28) 29 vols.
- 211 Romance of Canada, novels and boy's story books, etc. (22) 23 vols.
- 212 The Romance of Australia, novels and story books (20) 21 vols
- 213 Lord Northcliffe—At the Wars, North Sea Fishers and Fighters, History of England (2), and biographical and miscellaneous (15) 19 vols.
- 214 Mrs. Gaskell—Chadwick, Robinson Crusoe and miscellaneous (40)
- 215 Novels and miscellaneous literature in 60 vols.
- 216 A similar lot and a quantity of unbound literature
- 217 Novels and miscellaneous vols.



218	Ditto	vols.
219	Ditto	vols.
220	Ditto	vols.

*Billiard Room*

- 221 A blue ground bordered Oriental rug and a large black bear-skin rug with head and claws mounted on blue cloth
- 222 The pink coloured Wilton pile billiard surround
- 223 Three pairs of long green chenille curtains with cord and tassel holders
- 224 A 5ft. burnished steel scroll fender, a pair of 23in. ditto fire dogs, and 4 fire implements
- 225 Ten wrought iron electric pendants and brackets and a 3ft. 6in. mahogany Pembroke table on casters
- 226 A green chenille table cover, a damask ditto, a soy frame, a 12in. orange Ruskin ware beaker, a Doulton ewer, a stone-ware ditto and a 2-handled pewter presentation tankard
- 227 A pair of 27in. dwarf carved oak cupboards, one fitted as a coal cabinet with fall fronts
- 228 A full-size billiard table by Burroughes and Watts with slate bed, marking board, set of ivory billiard balls and accessories
- 229 A large oak framed billiard settee on fitment, in 3 divisions, upholstered in leather with loose cretonne covers
- 230 Two wall settees covered in crimson plush
- 231 A settee covered in saddlebags and plush, and a ditto easy chair en suite

- 232 An ebonized frame settee covered in tapestry, rosewood cheval fire screen with tapestry panel, 2 tapestry curtains, and a cushion
- 233 An 8ft. mahogany bookcase enclosed by 4 glazed doors with panel doors under
- 234 A bordered Persian carpet,        ft. ×        ft.
- 235 A clock with striking action in black marble case, and another with bronze female reclining figure

#### *Kitchen*

- 235A A deal table wringer, a deal pedestal cupboard, and a Windsor chair

#### *Billiard Room*

- 236 A baize crimson chenille table cover
- 237 A walnut and gilt cabinet gramophone on short cabriole legs
- 238 A  $7\frac{1}{4}$  octave upright grand pianoforte by H. Kohl of Hamburg, in ebonised and gilt incised case with candle sconces
- 239 An ebonised music stool on cabriole legs, upholstered in green morocco
- 240 A Traverse talkie gramophone
- 241 An octagonal centre table in thuyawood and ebony, banded with tulip and other coloured woods, with gilt mouldings, on quadruple base, 41in.
- 242 A rosewood stationery cabinet and writing desk with fall-front, the interior fitted with 4 stationery racks, reference books, miniature drawers, and 7 other fittings
- 243 A similar lot

244 An oak music Canterbury, fitted with drawer, a paper basket, and a quantity of unbound music

245 A miniature model of a suit of armour in engraved steel, on stand

246 A fireproof safe by Chubb and Sons with 4 keys, 25in. × 20in. × 20in.

247 A 2ft. 10in. Globe Wernicke bookcase in light oak, comprising 5 glazed sections with drop fronts

248 One ditto

249 One ditto (without base)

250 A deep-seated divan easy chair in red velvet and saddlebags with loose cretonne cover

251 A large circular brazier on carved Moorish stand, 27in. diameter

252 A square cushion in velvet, a circular ditto, a circular table on iron scroll frame, a 3-tier oak display stand, and a 12in. oak casket with brass mounts

253 A very large specimen of an alligator skin

254 A small stuffed crocodile, a python skin, mounted on red velvet, a sword fish, an old hand-made Scottish horn oatmeal spoon, a leather whisk, and a sword with cross handle, and leather scabbard

255 An oak shield mounted with 27 weapons, etc.

256 One ditto with 16 weapons

257 An ancient elk-head, 4 flintlock guns, a Zulu shield with 3 spears, and a war horn

258 Five antique native wood pillows or head rests

16.

30/-

Passed

14/-  
Edwards,

10/-

25/-

22/-

27.



259 Three swords in sheaths, 5 spears, bows and arrows, 3 shields, and a young bear on a tree trunk

260 A quart pewter measure, 2 models of elephants, a set of Staunton chessmen in mahogany case, and a box of dominoes

261 Sixteen ivory snooker balls, a triangle, and a brush

262 Two sets of ivory billiard balls

263 A carriage clock in brass case

#### *Dining Room*

265 A hammered brass circular electrolier for 8 lights with chain suspensions with fringed shade

266 Two pairs of orange sateen curtains

267 A 4ft. 6in. oak circular library table on triangular base, top lined morocco, fitted 4 drawers

268 A crimson baize table cover, a butler's mahogany tray and stand, a 6ft. oxidised curb fender with 3 implements, and a wrought iron screen with leaded stained glass panels

269 A pair of carved mahogany Hepplewhite chairs with shield backs, seats upholstered in green morocco

270 A 4ft. mahogany 2-tier dinner wagon, fitted with cupboard in base

271 A display cabinet of Sheraton design, in mahogany and satin-wood, inlaid with marquetry in flowers and festoons, the upper part fitted 3 shelves enclosed by 2 glazed tracery doors, the lower part with centre drawer and 2 cupboards, on cabriole legs, and a shelf under

- 272 Twenty-four coloured glass wines, 3 decanters, 5 finger bowls, 6 other pieces, and a pair of wire-work flower vases with blue glass liners

THE CARVED OAK FURNITURE OF THE DINING  
ROOM

COMPRISING :—

- 273 A 7ft. high-back sideboard with centre bevelled mirror back and shelves, 3 drawers, 2 cupboards, and recess under
- 274 A 5ft. 3-tier dinner wagon, carved with birds and fruit
- 275 A pair of carving chairs with padded seats, arm-rests and backs, in red morocco, spiral stretcher supports
- 276 A set of 6 standard chairs, en suite
- 277 A ditto lot
- 
- 278 A gong and beater on Bombay mahogany stand, richly carved with foliage, on claw and ball feet
- 279 A set of three mahogany corner elbow chairs, the seats upholstered in leather, embossed with animals and birds
- 280 Two mahogany standard chairs with pierced splat backs, upholstered, en suite
- 281 A pair of Sheffield wine coolers with double ring handles
- 282 A 22in. double-handled tray, plated on copper, with pierced gallery

- 283 A cut-glass biscuit barrel in plated frame, a plated tazza, glass butter dish with plated mounts, a plated hot water jug with wood handle, and 3 plated meat covers
- 284 Two plated gravy spoons, a ditto soup ladle, 5 dessert knives with bone handles, 8 ditto forks, and odd cutlery in — pieces

#### DECORATIVE PORCELAIN, ETC.

- 285 An 8in. Capo di Monti casket with lid painted with a group, —The Forgers, embossed with flowers and mask-heads
- 286 A 21in. gros bleu Vienna 2-handled vase and cover with gilt handles, painted with an allegorical group
- 287 A 12in. flat cut-glass scent bottle with lock, a large glass jug, 9 long stem liqueur glasses, flower holders and glass, various, in 15 pieces
- 288 Six ruby glass flower bowls, 4 ditto specimen holders, a sea-shell ornament, pair of circular pilgrim bottles, 3 square spirit bottles with gilt decorations, and 10 cut-glass stoppers
- 289 Eight jardinières, a 10in. green flower vase, turquoise ditto, 3 glass tazze toilet ware in 18 pieces, a white china timepiece, a silver-mounted scent bottle, 9 cups, various, and pieces of odd china
- 290 A 13in. modern Worcester group—Romeo and Juliet, a pair of 12in. ditto figures—Musician and Dancer, and a pair of 8in. ditto—Drummers
- 291 A 15in. ivory tusk, fitted as a thermometer, a Bohemian ruby and glass vase, a 12in. cut-glass ewer, and a clock with striking action in gilt metal case with enamelled dial
- 292 Two Dresden deep plates painted with flowers, 2 shallow ditto, 4 old English plates, a ruby and gilt cup and saucer, a sugar bowl and cover painted with village scene, and 4 saucers, various



293 Two Dresden cups and saucers, 2 ditto bowls, covers and stands, and a ditto teapot and lid

294 A 22in. terra cotta group—Romeo and Juliet, a 26in. Parian winged figure, and a ditto figure of King Edward

295 A pair of gros bleu and enamelled urn-shaped vases with covers, on ormolu plinths

296 A bronze statuette of Cupid by L. Gregoire, fitted for electric light

297 A brass coal purdonium, table gramophone, 2 bird cages, butler's tray and stand, carriage roll, Turner toilet ware in 4 pieces, a pair of crescent and bird ornaments, a pair of owl ditto, 5 jardinières, and sundry items

298 A pair of bronze koros on triple feet with dragon handles and covers, surmounted by an eagle

299 A brass-mounted inkwell, 2 crystal receiving sets, 2 jewel cases, set of brass fire irons, a pair of dogs, a box of Minton tiles, a pierced steel coal vase, and a pair of electric pendants

## CHINA

300 A set of 3 Chelsea figures representing three of the seasons

301 A 6in. Capo di Monti jug embossed with nude figures escorting a figure on a goat with double handles and vine leaf cover

302 A pair of 7in. Continental groups—Courting Couples, and a 9½in. Crown Derby figure of a young lady

303 A 16in. oval Amsterdam bowl with snake handles (a.f.), and an Amsterdam Dresden jug

304 A 30in. Worcester figure—The Tambourine Girl

*Conservatory*

- 305 A mahogany washstand with marble top, 2 ebonized pedestals, a plaster ditto, glazed door in carved oak frame, and an embossed china jardiniere on pedestal
- 306 A child's rocking horse, and a " Joy " tricycle
- 307 A pair of Moorish pottery figures with palms, fitted for electric light
- 308 An ebonized bijouterie table, and a brass Corinthian column electric floor lamp
- 309 A pierced wrought iron jardiniere stand, 7 jardinieres, a small foliated china pedestal, a long arm, and a water can
- 310 Two majolica pedestals and 2 jardinieres
- 311 A pair of large blue and white 2-handled vases on triple feet, a Doulton ware jardiniere and pedestal, and another
- 312 A 5ft. deal fitment enclosed by 2 panel doors, a painted ditto, enclosed by 2 glazed doors, a painted corner cabinet, and a ditto table
- 313 A brass curb, electric fire, ditto grill, 2 fire screens, deed box, and a cork seat bathroom chair
- 314 A brass adjustable music seat, a mahogany hall chair, 2 walnut framed chairs, and a monkey pipe-rack

*Basement, Housekeeper's Room*

- 315 The brown bordered carpet as laid, 14ft. × 10ft.
- 316 Three lace curtains, 2 pairs of brown casement ditto, iron fender, a 2-fold fire screen, a brass gas pendant, mahogany dial, a bamboo overmantel, and an engraving—Midsummer Night's Dream



- 317 A deal-top table, green chenille table cover, 6 chairs with perforated seats, 2 wicker armchairs and cushions, and an American rocking chair
- 318 A bamboo music cabinet, painted chest of 5 drawers, a painted cupboard, a 2-handled tray, a mantel timepiece, and 10 ornaments
- 319 A 3ft. carved oak corner cupboard enclosed by 2 arched panelled doors, recess under

#### *Kitchens*

- 320 A small deal table with drawer, large plate rack, 2 pieces of carpet, and a quantity of kitchen utensils and crockery
- 321 A tennis racket, 3 golf clubs, 2 mantel boards, 8 cues, 3 cases, 3 ladders, and 3 towel horses
- 322 A 6ft. deal table, Windsor armchair, 2 kitchen chairs, kitchen dial, salt box, steel fender, 2 tanks, oilstove, tumbler rack, knife box, 4 trays, and a plated ditto
- 323 A blue and white willow-pattern dinner service in pieces, and a quantity of cutlery, etc.
- 324 A grained refrigerator by Harrods

#### *Outside*

- 326 A galvanised bin, a semi-circular pierced iron table, and an iron panstand

### FINIS

*Messrs. PHILLIPS, SON & NEALE, Limited, will be happy to make arrangements for the removal or delivery of purchases. Please leave instructions with the Clerk of the Sale or in the Office.*



