

Sales catalogue: Phillips, Son and Neale

Publication/Creation

October 31st 1933

Persistent URL

<https://wellcomecollection.org/works/fuku4c9n>

License and attribution

This work has been identified as being free of known restrictions under copyright law, including all related and neighbouring rights and is being made available under the Creative Commons, Public Domain Mark.

You can copy, modify, distribute and perform the work, even for commercial purposes, without asking permission.

**wellcome
collection**

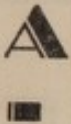
Wellcome Collection
183 Euston Road
London NW1 2BE UK
T +44 (0)20 7611 8722
E library@wellcomecollection.org
<https://wellcomecollection.org>

Mr. Wilkins 31st October 1933

*Wilkins
Crispin*

TELEPH
MAYFAIR

[Red scribble]



| P.S.N. | DATE | INITIALS |
|-----------|------------------|--------------------|
| SALE | <i>31. x. 33</i> | <i>Wilkins</i> |
| PURCHASE | | |
| CHECKED | <i>5. 11. 33</i> | <i>ku</i> |
| COLLECTED | <i>22/10/33</i> | <i>[Signature]</i> |
| RECEIVED | <i>22/10/33</i> | <i>[Signature]</i> |
| ACCESSED | | |
| PASSED | | |



Gentleman, removed from the pantechnicon,
S.W., etc. Also *Walthamstow / sal / 15 / 46*

**THE CONTENTS
OF THREE FLATS**

Removed from Circus Road, N.W.;
Kensington, W.; and Maida Vale, W.9.;
and other properties

WHICH WILL BE SOLD BY AUCTION

BY MESSRS.

PHILLIPS, SON & NEALE

LIMITED

BERTIE P. NEALE.

G. RUSSELL-HAY.

At their

GREAT ROOMS, 72, NEW BOND STREET, W.1

on Tuesday, October 31st, 1933

AT ONE O'CLOCK

May be viewed Saturday morning and Monday preceding the Sale

Waltham 21. 11. 18 6

clear

21 NOV 1933

Me
anno
WAR
ment
by at
in the
Sal
Val
All
PHIL
B

Telephones : Mayfair 2425/6.

CONDITIONS OF SALE

- FIRST—The highest bidder to be the buyer ; and if any dispute arise between two or more bidders, the lot so in dispute shall be immediately put up again and re-sold.
- SECOND—No person to advance less than 1s. ; above five pounds, 5s. ; and so on in proportion.
- THIRD—In the case of lots upon which there is a reserve, the Auctioneer shall have the right to bid on behalf of the seller.
- FOURTH—The purchasers to give in their names and places of abode and pay down 5s. in the pound, or more, in part of payment, or the whole of the purchase-money, *if required*, in default of which, the lot or lots so purchased to be immediately put up again and re-sold.
- FIFTH—The lots to be taken away and paid for, whether genuine and authentic or not, with all faults and errors of description, at the buyer's expense and risk, within *one day of the sale* ; Messrs. PHILLIPS, SON & NEALE, LIMITED, not being responsible for the correct description, genuineness or authenticity of, or any default or defect in, any lot ; and making no warranty whatever.
- SIXTH—To prevent inaccuracy in delivery, and inconvenience in the settlement of the purchases, no lot can on any account be removed during the time of sale ; and the remainder of the purchase-money must absolutely be paid on the delivery.
- SEVENTH—Upon failure of complying with the above conditions, the money deposited in part of payment shall be forfeited ; all lots uncleared within the time aforesaid shall be re-sold by public or private sale, and the deficiency (if any), and expenses attending such re-sale, shall be made good by the defaulter at this sale.

Messrs. PHILLIPS, SON & NEALE, Limited, will be happy to make arrangements for the removal or delivery of purchases. Please leave instructions with the Clerk of the Sale or in the Office.

Messrs. PHILLIPS, SON & NEALE, LIMITED, will not be responsible for any goods left, either by Buyer or Seller, more than one day from the date of Sale.

CATALOGUE

TUESDAY, 31st OCTOBER, 1933

AT ONE O'CLOCK

- 1 An upright oblong mirror in Georgian gilt and carved frame, and an 11in. ebonised miniature cabinet, fitted drawers
- 2 An old English mahogany and satinwood banded liqueur cabinet with fitted interior containing 8 original gilt glass bottles, 1 tumbler, and 1 wine
- 3 A 36in. antique inlaid mahogany table cabinet, fitted 4 drawers and 39 pigeon holes, enclosed by 2 doors
- 4 A gentleman's old English mahogany wardrobe with inlaid "chain" margins and dentil cornice, original handles, 48in. wide
- 5 A 32in. side table, similarly inlaid, with 2 drawers and marble top
- 6 A similar bedside cupboard, and another with oval panelled door
- 7 A 22in. antique walnut and parqueterie square work table, on carved S-scroll supports
- 8 A 30in. oak oblong table, on turned legs and stretcher rails
- 9 *An Empire cylinder-front writing table, in mahogany, with gilt mouldings and Vernis Martin decoration, fitted 4 miniature drawers, mirror and galleried canopy over, drawer under, 31in. wide*
- 10 An Empire side table in mahogany with gilt mounts, concave canted ends, 1 drawer, rouge marble galleried top and undertier, 36in. wide

Messrs. PHILLIPS, SON & NEALE, LIMITED, beg to announce that their LARGE AUCTION ROOMS and WAREHOUSES are open from 10 till 6 daily (by arrangement) for the reception of every class of property for sale by auction. Plate, Jewellery and Valuables are deposited in the Fire-proof Room. Large Vaults for Wine.

Sales conducted at Residences in Town or Country.

Valuations made for Probate or any other purpose.

All communications to be addressed :

PHILLIPS, SON & NEALE, LIMITED. Auctioneers. 72 New

B

| BUYER <i>M. Williams</i> | | Date <i>Oct 31/33</i> | |
|--|-------------------|-----------------------|-------------------|
| AUCTIONEERS <i>Phillips, Son & Neale</i> | | | |
| Lot | Amount £ s. d. | Lot | Amount £ s. d. |
| | | <i>41</i> | <i>4. 4. 0</i> |
| | | <i>60</i> | <i>6 16 6</i> |
| | | <i>103</i> | <i>1 18 0</i> |
| | | <i>184</i> | <i>4 0 0</i> |
| | | | <i>16. 18. 6</i> |



- 11 A French jardiniere table in walnut, ebony and marqueterie, mounted with gilt metal, 24in.
- 12 A circular jardiniere stand in mahogany or ormolu, marble galleried top, 16in.
- 13 A shaped jardiniere and liner, in rosewood and marqueterie, and an oblong gilt footstool
- 14 A French gilt 3-fold screen with crimson silk damask panels
- 15 A pair of antique Hepplewhite mahogany chairs with "wheat-sheaf" splats, and 2 others
- 16 An old English carved mahogany lampstand, on square step base
- 17 A 30in. antique mahogany oval Pembroke table, fitted 1 drawer
- 18 A nest of 4 mahogany and inlaid brass coffee tables
- 19 A Chippendale mahogany candlestick stand with adjustable bracket, on carved tripod
- 20 A Hepplewhite satinwood oval tripod table, and a small wool tapestry picture—Flowers
- 21 A Louis Seize carved and gilt drawing room suite, upholstered in floral silk brocade, comprising :— a 54in. winged settee, a pair of fauteuils (1 a.f.), and 2 occasional chairs
- 22 A pair of antique carved and enamelled chairs in the Louis style, and a French gilt footstool upholstered in silk
- 23 A Louis XVI carved and gilt elbow chair upholstered in tapestry, and a pair of carved French occasional chairs
- 24 A French 4-fold gilt screen with lattice mirror and floral silk tapestry panels
- 25 A carved and white enamelled French 2-fold dwarf screen, fitted with brackets and brocade panels
- 26 An antique carved walnut circular footstool upholstered in tapestry
- 27 A 3-division overmantel in Georgian gilt frame, and a walnut and rush-seated X-frame stool
- 28 A Chinese finely carved pearwood cabinet with gilt lacquer and applique panels of flowers, birds and insects, fitted numerous shelves, cupboards and recesses, 48in. wide
- 29 A pair of Chinese wood curved window seats, with sunk rouge marble tops
- 30 A pair of 10in. old Chinese bronze jardinieres, on wood bases, a pair of 12in. ditto incense burners, a pair of 8in. ditto jardinieres, and a pair of 8in. circular dishes
- 31 A pair of 23in. old Chinese lacquer octagonal caskets, on stands
- 32 An easy chair covered in Chinese silk embroidery

- 33 A 16in. Chinese lacquer octagonal casket, and a ditto tea caddy
- 34 A carved frame Japanese 4-fold screen with silk embroidered panels, and a 2-fold Meshribeyeh dwarf screen
- 35 A Chinese circular dish, 22in. diam., white, gilt and colours, decorated with a centre spray and arabesque border of exotic flowers, and 2—16in. circular dishes, decorated with figures and basket of flowers
- 36 A Sheraton mahogany serpentine sideboard with slight inlay, fitted 1 long and 2 short drawers, on 6 square moulded legs, 42in. wide, original castors (1 leg a.f.)
- 37 An antique mahogany circular dumb waiter in 3 tiers, and an antique oblong mahogany toilet mirror
- 38 A mahogany and satinwood banded bureau, fitted 3 drawers under, 36in. wide
- 39 A circular bevelled mirror in Georgian gilt frame with carved eagle and shell mounts
- 40 A barometer and thermometer in mahogany and inlaid banjo case
- 41 A small oblong mirror in carved and gilt Florentine frame of shell and foliated design and an antique silkwork casket
- 42 A 24in. antique English oak coffer with carved and inlaid panelled front
- 43 A pair of gilt etageres with mirror backs, a Meshribeyeh frame easy chair in saddlebag, and a pair of tapestry curtains and valances
- 44 A Hepplewhite mahogany elbow chair in the Louis style, carved shell knees, cabriole legs, upholstered seat, back and arm pads
- 45 A finely carved mahogany drawing room suite, upholstered in floral silk brocade, comprising:— a 6ft. settee, a pair of fauteuils, and 4 standard chairs
- 46 A white enamelled dwarf cabinet with Adam decoration, enclosed by 2 glazed doors with undertier, 29in. wide
- 47 An antique bevelled mirror in beaded wood frame
- 48 A plated and engraved tea and coffee set of square design, in 4 pieces
- 49 A pair of 13in. Oriental vases, powder blue, decorated with panels of figures of flowers, a pair of 12in. Delft plates, 2 Imari bowls, 2 small blue bowls, and a 10in. blue and white vase

14 8

7 2/3 Flowers

4/4/57

30 2/3 Russell

3/9/ -
Dunn

- 2/15/- Field
- 50 A 15in. antique japanned and decorated coffee urn, a 6in. carved sooshoo koro and cover, a pair of Empire ormolu candlesticks, a flint-lock pistol, 2 Oriental daggers in sheaths, and 2 other small articles
- 51 Four Toby jugs, a pair of Staffordshire hounds, 8 small groups and figures, a pair of jardinières, a pair of 10in. turquoise, and gilt vases 30/-
- 52 A pair of bronze 3-branch candelabra, fitted for electric light, a pair of 12in. Empire bronze figures, on square bases, an antique iron and brass square skeleton clock, and a Burmese bronze model of a Peacock 45/- Roberts
- 53 French School (1766)—Frigates and Sailing Vessels in a heavy sea, English School, V.C.—Lake Scenes, a pair—Landscape (water-colour) (3) 35/- N.S.
- 54 English School—The Donkey Race, T. B. Hardy (after)—Harbour Scene, F. Goodall (after)—Desert Scene, Unknown—Heads of Three Horses, and 1 other (5)

Announcement

PURCHASERS ARE RESPECTFULLY INFORMED THAT, FAILING THE CLEARANCE OF THEIR LOTS WITHIN ONE DAY OF THE SALE, MESSRS. PHILLIPS, SON AND NEALE, LIMITED, HAVE NO ALTERNATIVE BUT TO SEND THEM TO A WAREHOUSE AT PURCHASER'S RISK AND EXPENSE

- 55 A pair of coloured prints, after Morland—Poverty and Opulence, another pair—Game Shooting, in Hogarth frames, a coloured mezzotint—Lady Jane Gray, and 3 others (8)
- 56 Italian School—Girl Musician, 1 other painting, 8 pen and ink drawings, by R. Cleaver, etc., an engraving—Gadd's Hill, after Sir L. Fiedes, and 28 other pictures, various 19/- N.S.
- 57 A pair of old Biblical portraits on glass, a pair of oval coloured engravings, after Cipriani, a miniature in maple frame, and 7 others, after old masters
- 58 An oval girandole in chased gilt metal frame with numerous candle sconces, and a Persian rug (a.f.) 2/17/6 Dan
- 59 A red, blue and green figured and bordered Turkey carpet, ft. × ft. 3/15/- N.S.
- 60 A pair of 20in. antique bronze 2-handled vases of classical design 6/16/6 6.

- 61 Two Persian rugs
 62 Two others
 63 A small red ground and figured Persian carpet
 64 A French clock with striking action, in ormolu case, in the Empire style, flanked by figure of a Musician
 65 A small French drum-shaped clock in ormolu case, surmounted by figure of a cherub
 66 An antique grandfather clock, by Joseph Saer, Londini, in Dutch marqueterie case
 67 A mauve pile carpet, 18ft. × 12ft., and underfelt
 68 A figured and bordered Persian rug (a.f.), and 2 sheepskin rugs
 69 Two pairs of brown figured curtains and pelmets
 70 Three pairs of mauve figured curtains, and a portier curtain
 71 A 5ft. *finely carved mahogany cabinet of Chippendale design*, the upper part enclosed by 3 glazed tracery doors, the lower part with 2 cupboards and centre recess
 72 A 7ft. carved mahogany pedestal sideboard
 73 A pair of 2lin. Italian bronze ewers, and a pair of ditto candelabra
 73A An oak refectory table of Jacobean design, on bearded bulbous supports with stretcher rails
 74 A 3ft. 6in. mahogany chest of 4 long drawers
 75 A 6ft. mahogany and inlaid bedroom suite, comprising :— a wardrobe enclosed by 2 mirror doors, centre part fitted cupboard and 4 drawers under, a dressing table, fitted 3 drawers, a triple mirror over and a washstand with marble top and back
 76 A 4ft. mahogany and inlaid chest of 3 long and 3 small drawers, on bracket feet
 77 An antique 3ft. 6in. mahogany chest of 3 long and 2 small drawers
 78 An antique oak 3ft. gate-leg table, fitted drawer
 79 An antique 2-flap mahogany breakfast table, on tapered legs
 80 A mahogany chest of 2 long and 2 small drawers
 81 A 3ft. 6in. mahogany chest of 3 long and 2 small drawers
 82 An antique mahogany bow-front chest of 3 long and 2 small drawers
 83 An antique mahogany enclosed washstand with interior mirror
 84 A Queen Anne wardrobe in walnut, the upper part enclosed by panelled doors, 2 long and 2 short drawers under, 5ft. wide

- 85 A Flemish armoire or wardrobe in mahogany, with dentil triangle cornice, the upper part with cupboard and shelves enclosed by panelled doors
- 86 A Queen Anne walnut "tall-boy" chest of eight drawers with brass drop handles and escutcheons, 3ft. wide
- 87 A 3ft. 10in. mahogany "tall-boy" chest of eight short and two long drawers, with carved fret frieze
- 88 A pair of 3ft. 3in. mahogany corner cabinets, the upper parts carved in swags of garlands with lattice glazed doors and cupboards under
- 89 A Louis XVI Buhl centre table, fitted drawer, on cabriole legs and ormolu mounts
- 90 A ditto cabinet, fitted shelves enclosed by panelled doors and marble top
- 91 The companion cabinet
- 92 A set of 6 and 1 mahogany chairs with shield-shaped backs, seats covered in leather
- 93 A walnut oval tea table with carved edge, on cabriole legs
- 94 An old English mahogany chest of 3 long drawers
- 95 A 4ft. 6in. carved walnut bergere suite, comprising:— a settee with 4 loose cushions upholstered in cerise and gold floral silk and 2 easy chairs, each with 2 loose cushions
- 96 A papier maché tray decorated with flowers, and a needle-work picture in rosewood frame 3/3/- Robert
- 97 A pair of 24in. Chinese trumpet-mouth vases, decorated with flowers
- 98 A papier maché and decorated inkstand, a blotter, and a Boule 2-division inkstand 42/- "
- 99 A pair of old English blue gilt and floral vases 42/- "
- 100 An antique mahogany and inlaid "tall-boy" chest of 6 long and 2 small drawers 5/10/- Wash?
- 101 An old English shell model of a Bouquet of Flowers under glass shade, on stand 38/- Ross
- 102 An upright pianoforte, by Nathaniel Berry, London
- 103 A 5ft. figure of a woman supporting a jardiniere
- 104 A mahogany pedestal cupboard, 2 cane-seat chairs, and a towel ailer
- 105 A pair of Louis style elbow chairs upholstered in figured tapes- 40/- N.S.
try
- 106 A set of 4 carved mahogany Chippendale standard chairs with loose seats in stamped velvet 6/6/- "

38/-

4

- 107 A set of 6 and 2 arm carved mahogany Hepplewhite chairs with saddle seats in leather
- 108 A Persian design Wilton pile carpet, 14ft. 6in. × 11ft. 6in.
- 110 A 28in. French kingwood china cabinet with glass door and sides, ormolu mounts
- 111 A small mahogany cupboard and an inlaid mahogany jardiniere stand and liner
- 112 A 2ft. 6in. Chinese black and gold lacquer bureau, 3 drawers under
- 113 A pair of tub chairs with cane panels and loose squab seats, en suite
- 114 A 4ft. mahogany and inlaid sideboard, fitted drawer and 2 cupboards
- 115 A 3ft. 9in. ebonised dwarf cabinet, and a small mahogany Davenport 38/- Wash
- 116 A 34in. mahogany and inlaid table, lined leather, with cabinets over 60/- 4
- 117 A light ground and figured Axminster carpet with additional border, ft. × ft. 63/- 11
- 118 A 4ft. 2-pillow back settee covered in cretonne with loose cushions 66/- Braska
- 119 A winged easy chair covered in cretonne with loose green cover, and 1 other, with loose cushion N.S.
- 120 A 44in. antique mahogany side table, fitted 1 long and 2 short drawers "
- 121 A square-back easy chair with loose cushions in brown linen "
- 122 An antique French gilt arm chair, covered in rose floral brocade "
- 123 Another, on fluted legs "
- 124 A Boule shaped-top centre table, in ebony, brass and tortoise-shell, fitted 1 drawer 88/- N.S.
- 125 A red ground figured and bordered Turkey carpet, 16ft. 6in. × 11ft. 9in. 63/-
- 126 The oak dining room appointments, comprising:— a 4ft. 6in. dresser, the upper part fitted 3 shelves and 2 cupboards, the lower part fitted 2 drawers and cupboard, enclosed by 2 panel doors 9/9/- Brown
- 126A A 6ft. refectory table, on carved end standards and double stretcher rail supports, en suite 8'2/2p "
- 61 127 A set of 6 and 1 elbow ladder-back chairs with rush seats, en suite 8/8/- Welch
- 128 A 20in. carved oak log box, en suite 28/- N.S.

- 129 A 3ft. 6in. carved walnut dining room table, on cabriole legs and claw and ball feet
- 130 A 2ft. 6in. carved oak hall table, fitted drawer and undertier 30/- Wash
- 131 A 2ft. 6in. carved oak 2-flap table
- 132 A 4ft. oak dresser, upper part fitted 2 shelves and 2 drawers 3/12/- and cupboards under
- 133 A shaped carved oak mirror and a slip ditto 22/- Goodrich?
- 134 A 2ft. oak kitchen cabinet 3/7/6 Spence
- 135 An old English mahogany corner washstand, fitted 1 drawer, with blue jug and basin
- 136 An antique oak linen coffer, 30in. wide
- 137 An old oak grandfather Clock with brass dial, by Bayley, Burton
- 138 A fine Sheraton barometer
- 139 A set of 6 marqueterie chairs with velvet seats 6/- N.S.
- 140 An old wheel-back elbow chair 26/-
- 141 An old grandfather clock, in oak case
- 142 A lady's inlaid mahogany writing table, fitted 3 drawers and bookshelves over
- 143 Two oak stools, fitted 2 flaps
- 144 An inlaid mahogany miniature display cabinet
- 145 An antique oval gilt frame mirror
- 146 A Sheraton mahogany bedside cupboard with concave front, fitted 1 drawer and cupboard over
- 147 A fine Sheraton mahogany bureau bookcase, interior fitted pigeon holes and drawers, cupboards under, and top having glazed lattice panel doors
- 148 A 3ft. 9in. antique oak dressing chest, with slightly carved front and fitted 2 drawers under 6/5/- Grant
- 149 An old mahogany semi-circular card table, on club feet
- 150 An antique pierced brass fender
- 151 An antique oak side table, fitted one drawer, on turned legs 4/5/- "
- 152 An old oak box with carved front 25/- "
- 153 An old oak hanging corner cupboard 29/- "
- 154 An old oak gate-leg table, fitted one drawer
- 155 An old mahogany bow-front chest 2/15/- Wash
- 156 A 36in. old English mahogany side table, on square legs
- 157 A square-back settee with drop-end and 3 cushions covered in beige silk damask, and a pair of easy chairs with loose cushion seats 27/- Lawrence?
- 158 A 6ft. oak enclosed sideboard of Jacobean design, 2 drawers and 2 cupboards, low panelled back

- 159 A 3ft. 6in. oval gate-leg table, en suite, on carved bulbous legs Lee? 4/10/-
- 160 A set of 4 dining chairs, en suite, with upholstered seats and backs in brown hide 5/1/- Ross
- 161 A bevelled octagonal mirror in oak frame, and a 4ft. carved oak hall bench 3/12/- "
- 162 A 2ft. 6in. figured walnut bureau, with interior pigeon holes and drawers, 3 drawers under N.S.
- 163 An inlaid mahogany work table, and a mahogany frame oval mirror
- 164 Two pairs of gold curtains and 2 pelmets, and a mahogany toilet glass, fitted 2 drawers
- 165 A Columbia radio set, all mains, 200-250 D.C., and a Columbia loudspeaker, in mahogany cases
- 166 An H.M.V. cabinet gramophone, in mahogany case
- 167 A 6ft. deep-seated settee covered in red leather, with 2 seat cushions, 4 small cushions, and a pair of easy chairs, to match, all with loose floral cretonne covers 7 1/2 2/3 N.S.
- 168 A plated shaped tray with pierced border, plated egg and toast frame, a small cruet, and a preserve stand
- 169 A 20in. inlaid mahogany square table, and a 4-fold rose repp screen 40/- N.S. 9
- 170 An easy chair with loose cretonne cover 47/- Lee 3
- 171 A pair of water-colours, by H. C. Fox, R.B.A.—Rural Landscapes, another, by W. J. Carroll—The Flower Girl, gilt frames 80/- Camp
- 172 A plain black Wilton carpet (worn), a hearthrug, a brass coal vase and cover, a fireguard, and 3 implements
- 173 A plain crimson pile carpet, 14ft. × 11ft. 12 2p Wood
- 174 Two pairs of rose curtains and 2 pelmets, a 4ft. 6in. pierced brass fender, a ditto coal vase, a ditto guard, a trivet, and 3 implements
- 175 A 6ft. inlaid mahogany wardrobe enclosed by 1 mirror and 2 panel doors 7 1/2/- Grant
- 176 A 3ft. 9in. ditto dressing chest of 2 long and 4 short drawers, oval mirror over
- 177 A 3ft. 3in. ditto chest of 5 drawers
- 178 An inlaid mahogany bedside cupboard, 2 cane-seat chairs, and a mahogany table electrolier
- 179 A pair of 3ft. inlaid mahogany bedsteads, each with box spring mattress, hair overlay, 2 pillows, also 1 bolster 11/11/- Sanders
- 180 A 3ft. mahogany hanging wardrobe enclosed by 2 panelled doors, dentil cornice

- 181 A 4ft. pine 4-poster bed with cornice
- 182 A walnut stool, on cabriole legs with a loose seat covered in green lining, 30in. long
- 183 A brass skeleton clock, by Simmons, Manchester, with striking action, under glass shade
- 4/1. 6 (184) *Italian School—A pair of Panoramic Views of Vesuvius, by Day and Night, seen across the Bay of Naples, 68in. × 20in., oak frames*
- 185 A pair of 7½in. turquoise blue Dresden jardinières, decorated panel of flowers and skating scenes
- 186 A flight Barr & Barr coffee ground gilt-edged dessert service, comprising :— 4 dishes, 11 plates (a.f.)
- 187 A bleu de roi Dresden tea and coffee service, comprising :— teapot, coffee pot, sugar basin, 6 cups, and 6 saucers
- 188 A 9in. Crown Derby 2-handled ewer with panel decorated in a landscape (stem broken)
- 189 A 9in. Worcester 2-handled vase painted landscapes and buildings (chipped)
- 190 A pastel portrait of Mrs. Braddyll, after Sir Joshua Reynolds, in an ornamental gilt frame
- 191 A pair of carved mahogany and cane panelled Bergere chairs, upholstered in green silk damask, each with 2 loose cushions
- 192 A 4ft. old English mahogany and inlaid "kneehole" table, fitted 4 drawers
- 193 A pair of antique mahogany and marqueterie swing frame toilet mirrors
- 194 A carved mahogany window seat of Chippendale design, upholstered in mauve silk damask, loose damask cover
- 195 A 30in. inlaid mahogany dressing chest of 3 drawers, cupboard under, and undertier
- 196 A mahogany occasional table, and a mahogany frame oblong mirror
- 197 A Louis inlaid gueridon, fitted 2 drawers, marble gallery top, and an Empire mahogany pedestal cupboard with marble top
- 198 An antique satinwood oval swing toilet mirror, serpentine plateau, 3 drawers
- 199 A 3ft. mahogany pedestal writing table, 9 drawers, leather top, end flaps
- 200 An old English mahogany tripod table, and a small antique mirror
- 201 A 3ft. oak chest of drawers of Jacobean design

50/- Warden

- 202 A large Persian runner, bordered, 16ft. 6in. × 3ft. 6in.
 203 A floral design Persian rug, 6ft. × 4ft.
 204 A tall bronze china lampstand, on circular base
 205 An old Italian painting, on panel
 206 An oilpainting—The Grinders, on panel, attributed to
 D. Feniers
 207 Two large china vases
 208 A china group—Music Performer, two Worcester green vases,
 with cover, a silver smelling salts bottle, a gilt writing set,
 and 4 silk mats
 209 A grandfather easy chair with carved oak underframing and
 loose cushion covered in needlework tapestry
 210 The companion chair
 211 W. Cruikshank, paintings on ivory—Still Life, a pair
 212 An antique bureau, fitted drawers, etc.
 213 A large bordered Turkey carpet with floral design
 214 An old coffer, fitted with 4 drawers under
 215 An old china vase with cover, on stand
 216 A blue and gold banded dinner set of 72 pieces
 217 An amber glass service of 45 pieces
 218 A Worcester style china dessert service decorated in fruit,
 flowers, bees and buttercups
 218A An 18in. Chinese "famille noire" vase, on wood stand
 218B A 12in. Chinese "famille rose" palm pot, on carved blackwood
 stand
 219 An oilpainting, by KoeKoek, in gilt frame
 220 An oilpainting—Farm Yard Scene
 221 An old Persian carpet, 13ft. × 11ft.
 222 A Persian rug, figured and bordered
 223 Another
 224 Another
 225 A pair of Sheffield wine coolers
 226 A Sheffield wine cooler
 227 An antique silver cup and cover
 228 A pair of Georgian decanter stands
 229 A 2-handled cup and cover, and a toastrack
 230 A silver tea and coffee set
 230A A 3ft. 3in. mahogany bookcase with glazed upper part, 2
 drawers and a cupboard enclosed by 2 panelled doors
 under
 230B A mahogany sofa-table with banded top, on 2 standards and
 claws, 2 drawers

- 230c A Persian pattern rug, 6ft. 3in. × 4ft. 3in.
- 231 A 37in. carved oak hall cabinet, fitted shelf over and cupboard under
- 232 A pair of 14in. blue and white Chinese vases and covers, a pair of Celadon 2-handled vases, a Persian 2-handled vase, a pair of 14in. Chinese brown splashed vases, with blue and white panels, and a pair of 14in. Ginori globular vases and covers
- 233 A 3ft. panelled oak chest with rising top
- 234 A 19in. old English mahogany dressing case, fitted numerous divisions, and a 24in. inlaid mahogany oval Sutherland table
- 235 *A French cylinder-front bureau in kingwood and rosewood, 6 small drawers over, 1 drawer under, on carved cabriole legs, 3ft. 6in. wide*
- 236 A 36in. Louis XVI parqueterie writing table, fitted 3 drawers, ormolu mounts and mouldings
- 237 A 42in. carved mahogany china cabinet in the Chinese Chipendale style, with gallery top, 2 drawers and undertier
- 238 A pair of 3-tier etageres, en suite, with mirror backs and carved eagle surmounts, and a corner bracket, en suite
- 239 A 2ft. 9in. mahogany cabinet enclosed by 2 carved doors, with undertier
- 240 A 23in. rosewood and inlaid shaped-top table, with undertier, a 13½in. splashed ewer with fish mouth, and a 10¼in. yellow and red 2-handled vase with floral panel
- 241 A carved and inlaid mahogany bijouterie table
- 242 A mahogany frame 3-fold screen of French design with brocade panels and a carved mahogany elbow chair with brocade seat
- 243 A 36in. Canton vase, finely decorated in panels of flowers and figures, in colours
- 244 A pair of 5in. Dresden bowls, decorated and encrusted with flowers, a pair of 9in. Dresden sprinklers in the Oriental taste, a pair of 6½in. ditto bowls and covers, decorated with arbour scenes and ram's heads, and a ditto casket
- 245 A pair of 11in. Chinese bulb-shape vases, powder blue, decorated with panels of flowers, and a pair of sepia and gilt jardinières, decorated in mythological scenes
- 246 Three old Delft vases and covers, a pair of 15in. ribbed ovi-form Delft vases and covers, 8 ditto plates, and pieces of blue and white oriental china

- 247 A pair of 12in. Hispano Moresque circular plaques, a 14in. ditto, a 6in. ditto shallow bowl, 2 ditto saucers, a lustre 2-handled vase, an 11½in. blue and gold ditto plaque, and a ewer
- 248 A mother-o'-pearl card case, an ivory ditto, a tusk carving, a shagreen spectacle case, a vesta case, an oval brass casket, 2 ditto tinder boxes, and a box of mother-o'-pearl counters
- 249 A plated inkstand with 2 receivers, a pair of Sheffield candlesticks, a ditto snuffer tray, a silver trinket box, a ditto mounted scent bottle, and a ditto calendar frame
- 250 A set of 3 old English mugs decorated in flowers (a.f.), a Derby pattern teapot and bowl and cover, 6 decorated cups and saucers, a pair of Dresden egg-shape vases, and 1 other
- 251 A pair of old Chinese hexagonal garden seats, in colours
- 252 A pair of 18in. Persian plaques, a 15in. ditto bowl, 2 ditto pilgrim bottles, a pair of 19in. blue Italian plaques, in high relief, and 6 Delft, Majolica, and other plaques, various
- 253 A mahogany palm stand with pierced borders
- 254 A 4ft. settee with stuffed seat and back and loose cover
- 255 Two inlaid mahogany armchairs with stuffed seats, and a ditto revolving bookcase
- 256 A Chinese brass jar, a ditto teapot, and 2 other pieces
- 257 Five Chinese plain-colour vases, sang-de-boeuf, powder blue, etc.
- 258 A 28in. Chinese carved blackwood stand with inset marble top
- 259 A folding camp bedstead, mattress and coverlid, and a 3ft. mahogany chest of 3 long and 2 short drawers
- 260 Three nearly new spoon-back Lloyd Loom low-seated chairs, with seats in floral cretonne
- 261 Six blankets and six sheets
- 262 Six pairs of cretonne striped curtains, 3 short net curtains, blue bordered Chinese pattern rug, overmantel with oval mirror and 2 photos, oval oak 2-tier table, linen basket, hexagonal bevelled mirror and smoker's stand
- 263 A gilt frame dressing seat with arms and cane panel, and a double-size black silk eiderdown
- 264 A 3ft. oak wardrobe with mirror door, a dressing chest, en suite, and a 3ft. oak combination bedstead with mattress, bolster, printed quilt and eiderdown

- 265 A Sheraton oval toilet mirror in mahogany and satinwood, on a 17in. serpentine 3-drawer base with ivory bosses
- 266 A 3ft. 2in. antique dwarf oak chest, fitted 2 deep and 2 short drawers, open shelf under
- 267 Oilpaintings—Wouverman's School—A Hunting Scene, on panel ; Dutch School—The Smoker, and Reading the News
3
- 268 Ditto : H. M. Staakmaan—A Street in Cairo
- 269 Ditto : A. J. Woolmir—A Woodland Scene with pool and bathers
- 270 An oak canteen fitted trays, containing plated ware and cutlery in pieces, also other pieces, sundry table cloths and mats, pieces
- 271 A copper electric imitation coal fire and hod
- 272 A divan suite by Maple & Co., comprising :—a 6ft. Chesterfield settee and 2 easy chairs upholstered in black ribbed silk twill, with 4 loose seat cushions and extra cretonne covers
- 273 Two Bedford cord velvet curtains, brass photo frame, blue bordered pile carpet, ditto rug, 2 rolls of stair carpet, brass fender, 2 fire dogs and 3 implements, mirror medicine cupboard, bath stool, boot cupboard, copper curb, 4 cane-seat and Windsor chairs, brass kettle, Oriental rug, and 4 other articles
- 274 A blue and buff bordered Chinese pattern carpet, 10ft. by 9ft.
- 275 A 3ft. 9in. Queen Anne pattern suite, comprising :—wardrobe with 1 panel door, a kneehole dressing table with triple mirrors, and an upright chest of 5 drawers
- 276 A 4ft. 6in. oak panelled end bedstead, patent wire spring, top mattress, bolster, 2 pillows, and printed quilt
- 277 A patent folding baize lined card table and accessories, a 6ft. carved black oak china shelf, 18in. oak stool, and a 24in. carved oak dwarf table with 1 drawer
- 278 A rose ground bordered Wilton pile carpet, ft. × ft.
- 279 A 7¼-OCTAVE BABY GRAND PIANOFORTE BY CHALLEN, in a mahogany stained as rosewood case, on tapering twin legs with stretcher tails
- 280 A pair of mauve velvet curtains, a portiere ditto, a Louis XVI gilt open armchair, a gilt and black lacquer curb, a 2-tier brass smoker's stand, and another

- 281 Three inlaid rosewood and marqueterie occasional chairs, seats in black damask, and a 3-leaf screen, decorated in historical subjects
- 282 A collection of Stafford pottery, comprising :—thirteen toby jugs (various sizes), 2 handle "frog" tankard, 2 mask Wellington jugs, and 8 rustic groups and figures (24)
- 283 Two glass candlesticks, 3 blue and white plates, crinoline figure, a wall mirror in gilt scroll shaped frame, 3 tapestry pictures—Dutch Interiors, etc., and a painted Flemish tobacco box
- 284 A pair of miniatures "Port and Sherry" wine barrels, on stands, oak spirit tantalus with 3 bottles, and 3 plated labels, and a wine basket
- 285 Oilpainting—A. H. Tourrier—The Wolf and the Lamb
- 286 Two small ditto—Heads of women, another—Dutch Fisher Woman, and another—River Scene, carved frame, a blue and white ginger jar, and a pottery deep dish
- 287 An octagonal gilt frame mirror with tracery divisions, a 6ft. gilt electric fluted floor standard, with silk pagoda shade

The Appointments of a Dining Room, in carved oak, comprising :—

- 288 A 4ft. 6in. overmantel with 3 panels, fluted and carved columns
- 289 A 2ft. 5in. bureau bookcase, 2 glass doors, 2 drawers under
- 290 A 3ft. dresser with 2 shelves
- 291 A set of 6 chairs, 2 with arms
- 292 A high back carving chair, seat and back in brown leather, and a club fender in velvet
-
- 293 A 3ft. oval gate-leg table
- 294 An oak hall mirror fitted hat pegs, ditto umbrella stand, an oleograph—Watteau subject, half pint plated tankard, Chinese jar, and an engraved glass claret jug, plated mounts
- 295 A roll of 33in. Wilton pile corridor carpet in about 7 yards, and a length of 24in. ditto
- 296 A 4ft. carved black oak hall settle with rising seat and arms, mask heads
- 297 *Books*—Waverley Novels, Centenary Edition, 1871 25 vols.
- 298 Forster's Arabian Nights, 1810 (5), Novelist Library (9), Rienzi (3), Maror's Collection—Travel (8), Miscellaneous (14) 39 vols.

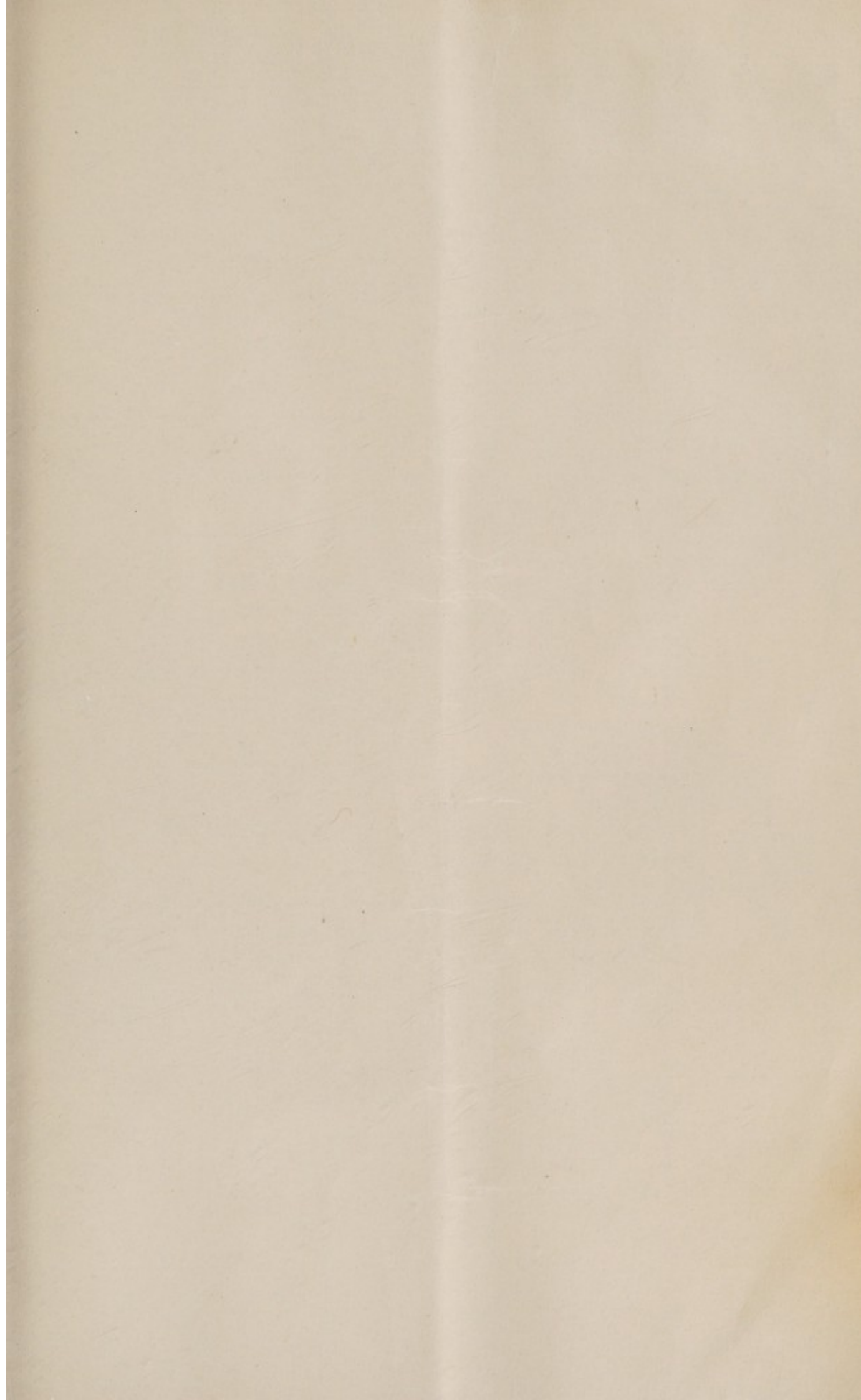
- 299 An "Easiwork" table, a blue and white dinner service, pieces, sundry kitchen utensils and crockery, pieces, ironing board, and a set of 5-tread steps
- 300 A Hoover patent electric vacuum carpet cleaner and the accessories, nearly new

FINIS

Announcements

of forthcoming Sales by Auction appear in
the "Daily Telegraph" every Monday, and
in "The Times" every Tuesday.

Messrs. PHILLIPS, SON & NEALE, Limited, will be happy to make arrangements for the removal or delivery of purchases. Please leave instructions with the Clerk of the Sale or in the Office.



SALES in PRIVATE HOUSES

Messrs. Phillips, Son & Neale have specialized for 130 years in holding Sales of the Contents of Residences on the premises.

Such Sales, ranging from a three weeks' Sale at Fonthill Abbey in 1834 to a fortnight's Sale at Milton Abbey in 1932 ; or from the Contents of a small Residence in Bruton Street (1807), then the residence of Beau Brummell, to innumerable smaller houses in the same vicinity this year, have been carried out almost weekly during the existence of this Firm. The Sales at Melchett Court and Beau Desert will be remembered by many, whereas the Sales for H.M. George III, at Weymouth, for H.M. George IV, at Buckingham Palace, for H.M. Queen Caroline at Brandenburgh House, or for the Countess of Blessington at the famous Gore House were all above 100 years ago.

It is undeniable that this Firm has held more Sales on the premises than any other Auctioneers in existence, and they therefore respectfully submit that their knowledge and experience of such Sales is unequalled.

Messrs. Phillips, Son & Neale will gladly send a representative to any part of the country to inspect and advise on such matters, and owners are invited to discuss with this Firm any property of any description which it is intended to sell.

PHILLIPS, SON & NEALE, LTD.

72, New Bond Street,

W.1.

