

Sales catalogue: Glendining

Publication/Creation

9 February 1931

Persistent URL

<https://wellcomecollection.org/works/r9fwzdyb>

License and attribution

This work has been identified as being free of known restrictions under copyright law, including all related and neighbouring rights and is being made available under the Creative Commons, Public Domain Mark.

You can copy, modify, distribute and perform the work, even for commercial purposes, without asking permission.



Wellcome Collection
183 Euston Road
London NW1 2BE UK
T +44 (0)20 7611 8722
E library@wellcomecollection.org
<https://wellcomecollection.org>

*76.42
Gerrard*

Mr Boume. 9th February 1931

Telegraphic Address:
"NULLIFIED, LONDON"

Telephone:
GERRARD 4424.

ANTIQUE and
MODERN
FURNITURE

FINE
ART PROPERTY.

JEWELLERY,
PLATE, CHINA.

MEDALS, COINS,
POSTAGE
STAMPS, ETC.

ORIENTAL
ART.

1931.

GLE	DATE	INITIALS
SALE	9. 11. 31	HCB
PURCHASE	11. 11. 31	KL
CH	13/2/31	G.E.H.
	13/2/31	J
	13/2/31	
PASSED		

Stamp: RECEIVED 13 FEB 1931

Chinese Porcelain, Japanese
Pottery, Snuff Bottles, Ivory
Carvings, Netsuke, Lacquer,
Bronzes, Prints, Sword
Furniture, Arms, English
Furniture, Varia, etc.

For Sale by Auction at our Galleries,
7, Argyll Street, Oxford Circus, London, W.1

DAY OF SALE:

Monday, Feb. 9th, 1931

At 1 p.m. precisely.

On View Friday, February 6th, Saturday Morning,
February 7th, and Morning of Sale

PLEASE NOTE PLACE & TIME OF SALE—1 p.m.

Healed Original

Telegraphic Address:
"NULLIFIED, LONDON."

Telephone:
GERRARD 4424.

ANTIQUE and
MODERN
FURNITURE.

FINE
ART PROPERTY.

JEWELLERY,
PLATE, CHINA.

MEDALS, COINS,
POSTAGE
STAMPS, ETC.

ORIENTAL
ART.

1931.

AND CO., LTD.

AUCTIONEERS,

7, Argyll Street,
Oxford Circus, W.1.

Adjoining Oxford Circus Station.

Catalogue

OF

Chinese Porcelain, Japanese
Pottery, Snuff Bottles, Ivory
Carvings, Netsuke, Lacquer,
Bronzes, Prints, Sword
Furniture, Arms, English
Furniture, Varia, etc.

For Sale by Auction at our Galleries,
7, Argyll Street, Oxford Circus, London, W.1

DAY OF SALE:

Monday, Feb. 9th, 1931

At 1 p.m. precisely.

On View Friday, February 6th, Saturday Morning,
February 7th, and Morning of Sale

PLEASE NOTE PLACE & TIME OF SALE—1 p.m.

Telephnee No.
GERRARD 4424.

Telegraphic Address
NULLIFIED, LONDON

Messrs. Glendining & Co., Ltd.

Auctioneers, Surveyors, Land & Estate Agents,

No. 7, ARGYLL STREET, OXFORD CIRCUS, W. 1.

(Adjoining Oxford Circus Tube Station).



Valuations for Probate,
Fire Insurance & Family
Division carefully made
by Experts.

Furniture Sales at
Private Residences
can be arranged.

Advances made pending sales.

FURNITURE, PICTURE and ART SALES
are held periodically at the Galleries.



No. 7, ARGYLL STREET, OXFORD CIRCUS, W. 1.

TERMS ON APPLICATION.

Date

1900

BUYER

SALE

Lot	Amount	Lot	Amount
1	100.00	1	100.00
2	200.00	2	200.00
3	300.00	3	300.00
4	400.00	4	400.00
5	500.00	5	500.00
6	600.00	6	600.00
7	700.00	7	700.00
8	800.00	8	800.00
9	900.00	9	900.00
10	1000.00	10	1000.00
11	1100.00	11	1100.00
12	1200.00	12	1200.00
13	1300.00	13	1300.00
14	1400.00	14	1400.00
15	1500.00	15	1500.00
16	1600.00	16	1600.00
17	1700.00	17	1700.00
18	1800.00	18	1800.00
19	1900.00	19	1900.00
20	2000.00	20	2000.00
21	2100.00	21	2100.00
22	2200.00	22	2200.00
23	2300.00	23	2300.00
24	2400.00	24	2400.00
25	2500.00	25	2500.00
26	2600.00	26	2600.00
27	2700.00	27	2700.00
28	2800.00	28	2800.00
29	2900.00	29	2900.00
30	3000.00	30	3000.00
31	3100.00	31	3100.00
32	3200.00	32	3200.00
33	3300.00	33	3300.00
34	3400.00	34	3400.00
35	3500.00	35	3500.00
36	3600.00	36	3600.00
37	3700.00	37	3700.00
38	3800.00	38	3800.00
39	3900.00	39	3900.00
40	4000.00	40	4000.00
41	4100.00	41	4100.00
42	4200.00	42	4200.00
43	4300.00	43	4300.00
44	4400.00	44	4400.00
45	4500.00	45	4500.00
46	4600.00	46	4600.00
47	4700.00	47	4700.00
48	4800.00	48	4800.00
49	4900.00	49	4900.00
50	5000.00	50	5000.00
51	5100.00	51	5100.00
52	5200.00	52	5200.00
53	5300.00	53	5300.00
54	5400.00	54	5400.00
55	5500.00	55	5500.00
56	5600.00	56	5600.00
57	5700.00	57	5700.00
58	5800.00	58	5800.00
59	5900.00	59	5900.00
60	6000.00	60	6000.00
61	6100.00	61	6100.00
62	6200.00	62	6200.00
63	6300.00	63	6300.00
64	6400.00	64	6400.00
65	6500.00	65	6500.00
66	6600.00	66	6600.00
67	6700.00	67	6700.00
68	6800.00	68	6800.00
69	6900.00	69	6900.00
70	7000.00	70	7000.00
71	7100.00	71	7100.00
72	7200.00	72	7200.00
73	7300.00	73	7300.00
74	7400.00	74	7400.00
75	7500.00	75	7500.00
76	7600.00	76	7600.00
77	7700.00	77	7700.00
78	7800.00	78	7800.00
79	7900.00	79	7900.00
80	8000.00	80	8000.00
81	8100.00	81	8100.00
82	8200.00	82	8200.00
83	8300.00	83	8300.00
84	8400.00	84	8400.00
85	8500.00	85	8500.00
86	8600.00	86	8600.00
87	8700.00	87	8700.00
88	8800.00	88	8800.00
89	8900.00	89	8900.00
90	9000.00	90	9000.00
91	9100.00	91	9100.00
92	9200.00	92	9200.00
93	9300.00	93	9300.00
94	9400.00	94	9400.00
95	9500.00	95	9500.00
96	9600.00	96	9600.00
97	9700.00	97	9700.00
98	9800.00	98	9800.00
99	9900.00	99	9900.00
100	10000.00	100	10000.00

BUYER

H. E. 4 Downe

Date

9th Feb 1931

AUCTIONEERS

Glendinning

Lot	Amount			Lot	Amount		
	£	s.	d.		£	s.	d.
1	2	5	✓	215	3	5	✓
16	1	10	✓	216	6	6	✓
19	1	14	✓	225	3	15	✓
20	3	5	✓	229	1	2	✓
33	5	5	✓	231	2	4	✓
56	1	18	✓	264	4	5	✓
154	3	5	✓	269	5	✓	✓
160	2	✓	✓	270	3	10	✓
161	2	12	6 ✓	271	1	4	✓
162	2	12	6 ✓	277	5	✓	✓
163	2	2	✓	279	1	14	✓
165	2	14	6 ✓	281	18	✓	✓
166	3	10	✓	282	2	✓	✓
167	4	5	✓	285	5	✓	✓
188	16	✓	✓	289	9	✓	✓
191	3	10	✓	293	62	✓	✓
204	2	4	6 ✓	300	4	5	✓
212	3	15	✓	301	1	18	✓
213	3	15	✓	302	1	16	✓
214	3	15	✓	303	1	12	✓
	75	✓			19	✓	
	9				12		

WA/Hmm/CM/82/8/11
Messrs. Glendining & Co., Limited,

7, ARGYLL STREET, OXFORD CIRCUS, W 1.

A CATALOGUE

OF

Chinese Porcelain, Japanese
Pottery, Snuff Bottles,
Ivory Carvings, Netsuke,
Lacquer, Bronzes, Prints,
Sword Furniture, Arms,
English Furniture, Varia, etc.

For Sale by Auction

AT OUR GALLERIES,

7, ARGYLL STREET, OXFORD CIRCUS, W.1,

ON

Monday, February 9th.,

AT 1 p.m. PRECISELY.

On View Friday, February 6th, Saturday Morning, February 7th, and
Morning of Sale.

PLEASE NOTE PLACE AND TIME OF SALE—1 P.M.

CONDITIONS OF SALE.

- FIRST.—The highest bidder to be the buyer; and if any dispute arise between two or more bidders, the lot so in dispute shall be immediately put up again and resold, provided the auctioneer cannot decide the said dispute.
- SECOND.—No person to advance less than 1s. on bids of over £1, 5% on previous offer.
- THIRD.—In the case of lots upon which there is a reserve, the auctioneer shall have the right to bid on behalf of the seller.
- FOURTH.—The purchasers to give in their names and places of abode, and to pay down 5s. in the pound, or more in part of payment, or the whole of the purchase-money, *if required*: in default of which the lot or lots so purchased to be immediately put up again and resold.
- FIFTH.—The lots to be taken away and paid for, whether genuine and authentic or not, with all faults and errors of description, at the buyer's expense and risk, within Two days from the sale; GLENDINING & CO., Ltd., not being responsible for the correct description, genuineness, or authenticity of, or any default or defect in, any lot, and making no warranty whatever.
- SIXTH.—To prevent inaccuracy in delivery, and inconvenience in the settlement of the purchases, no lot can on any account be removed during the time of sale, and the remainder of the purchase-money must absolutely be paid on the delivery.
- SEVENTH.—Upon failure of complying with the above conditions, the money deposited in part of payment shall be forfeited; all lots uncleared within the time aforesaid shall be resold by public or private sale, and the deficiency (if any) attending such resale shall be made good by the defaulter at this sale.
- EIGHTH.—If any owner has placed a reserve on any lot, the auctioneers reserve to themselves the right to publish the fact and price at which it is reserved.
- NINTH.—Should any china bear trade marks which are not genuine the auctioneers are to have the right to erase such marks before delivering to the buyer.

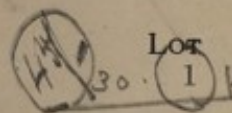
CATALOGUE.

MONDAY, FEB. 9th, 1931.

AT ONE o'clock PRECISELY.

Chinese Porcelain, etc.

Polychromes.



- 1 A pair of 13in. Tang mounted figures on camels and a pair of ditto camels
- 2 A 7in. green, yellow and cream Dog of Foh, an 8in. ditto camel, an 8½in. ditto kneeling horse
- 3 Two 8¾in. ditto vases; a 9in. ditto kilin; a 9in. ditto Dog of Foh
- 4 A 23in. famille verte vase, decorated, figures in a garden
- 5 A 5½in. peach teapot, Yung Ching; a smaller turquoise and aubergine ditto
- 6 Three three-colour pyramid groups of fruit on trays, 7½ins., 6½ins. and 6¼ins.
- 7 An old 25in. powder blue vase and cover with gilt floral decoration, and metal neck
- 8 A pair of 24in. cream crackle vases, figure and landscape decoration
- 9 An 8in. early Ming coloured vase, figures in a garden
- 10 A 15in. bark blue vase, decorated gilt dragons, feng bird, etc., and six bowls, decorated dragons

4
3 25/100
4 20/100
1 20/100
2 10/100
3 20/100
1 15/100
2 15/100
1 20/100
7 20/100
Lunar

Monochromes.

- 11 A 17in. turquoise blue vase, raised dragons
- 12 An 8¾in. ditto seated horse; an 11¾in. standing ditto; a 10in. ditto Dog of Foh

1
3 20/100
Master

Lot

- 13 An 8in. ditto kylin; small ditto, and a 10in. feng bird
 14 A 9in. ditto Dog of Foh; a 10in. ditto ewer, raised flowers
 15 A pair of 14in. green glaze mounted figures
 16 A 12½in. black glazed incense burner and cover
 17 A 9½in. celadon vase, ribbed and raised flowers; another 10½in. ditto with cover, raised tiger
 18 A pair of 12in. light tea glaze vases, raised brown dragons, stands
 19 A 10½in. grey pottery soul coffin, Wei type, figures in low relief
 20 A 2½in. turquoise figure of a horse, said to have been dug up from tombs in Kwantung Province

3 20/100 Maly
 2 14/100
 2 20/100 Maly
 1
 2 20/100 Maly
 2 20/100 Maly
 1
 1

Hardstone Carvings.

- 21 A fine colour graduated pink coral necklace, each bead carved with chrysanthemums

1 1/5 2.

Soapstone Carvings.

- 22 A 12in. standing Kwannon on a 2½in. base, and a 7½in. group of The Three Paragons of Longevity
 23 A 6½in. cream Buddha on lotus base; a 6in. standing figure of Kwanyin the Maternal
 24 A well carved 13in. group of four Dogs of Foh and a ball

2 20/100 Maly
 2 15/100 Sonner
 1 20/100 Maly

Snuff Bottles, etc.

- 25 Ivory, coloured and shaped as a boy with a scroll and fan
 26 Ditto, elephant with a pagoda shaped houdah
 27 Ditto, cone-shaped, carp in a stream
 28 Ditto, shaped as a boy holding a vase by its two handles
 29 Ditto, an elephant with a pagoda-shaped houdah
 30 Ditto, shaped as an Indian corn cob, and a spider
 31 Ditto, shaped as a reposing lady holding up a leg
 32 CORAL, deep pink colour, finely carved with an encircling dragon, waves and clouds

1 15/100 Le coque
 1 15/100 Johnson
 1 15/100 Shorn
 1 15/100 Wooranph
 1 15/100 Le coque
 1 15/100
 1 15/100 Shorn

Lot

- 33 ANOTHER, carved with a Dog of Foh and peonies
 34 DITTO, a vase carved with a dragon, beside which is a snarling tiger
 35 Ditto, bright pink, carved cranes, waterfall, clouds, etc.
 36 Another, carved phoenix and peonies
 37 Another, carved phoenix and flowers
 38 Agate, carved bird and clouds, brown stratum carved stag, moon and lotus
 39 Grey agate, black stratum, carved carp, castle, mounted figure, etc.
 40 Polychrome porcelain, raised figures; ditto, dragon and feng bird
 41 Ditto, the Eighteen Lohans; ditto, dragon and feng bird
 42 Cameo glass, decorated blue dog and hawk on opaque white; ditto, sage, tree, etc., in black on white
 43 Ditto, longevity emblems in red on clear glass; plain glass, figures, etc., painted on the interior
 44 Porcelain, blue animals on a peach bloom wave base
 45 Ditto, raised gilt figures on a mottled turquoise background; polychrome ditto, raised figures

1 10/10/11 1/2 Han
 1 1/6 1/2 Richard
 1 1/5 1/2 Leque
 1 1/10 1/2 ?
 1 1/12 1/2 Horn
 1 1/50 1/2
 1 1/11 1/2 Symon
 2 1/2 1/2 Leque
 2 1/2 1/2 "
 2 1/10 1/2 "
 2 1/14 1/2 1/2 py
 1 1/20 1/2 Hudson
 2 1/10 1/2 "

Cloisonne.

- 46 A very fine pair of 47 in. Japanese pink vases, decorated birds and flowers
 47 A pair of 20 in. well carved Chinese barrel-shaped stands with marble tops

1 1/2 1/2 Hunt
 2 1/6 1/2 Abraham

Bronzes, etc.

- 48 A 9 1/2 in. and an 8 in. bronze head of Buddha on 8 in. stands
 49 A 17 in. lotus jardiniere on a dragon support
 50 A heavy brass incense burner, and tray; a kettle; a jardiniere; a bronze incense burner and a cloisonne kettle; another piece
 51 A very fine Gandhara bust of Buddha, 11 ins. high, with letters of appreciation from Prof. A. Foucher of Paris University. In carved wood frame

2 1/15 1/2 Curator
 1 1/20 1/2 ?
 7 1/50 1/2 ?
 1 1/15 1/2 Gabor

Lot

- 52 An early 10 $\frac{1}{4}$ in. Indian shrine of Buddha; a 5 $\frac{1}{2}$ in. seated Blue Tara, and a 7in. vase, raised flowers

Embroideries, etc.

- 53 Two framed red cloth panels, embroidered flowers; another, silk embroidered lady in a bark boat, and a pair of framed sleeve bands
- 54 A pair of 4ft. 6in. framed oblong Chinese blue silk panels, embroidered dragons and waves; an upright ditto, decorated vases, flowers, etc.
- 55 A set of four 10ft. horizontal Siamese red cloth hangings with appliqué figures, etc.
- 56 A 4ft. 6in. oblong Indian dark plum coloured velvet runner, decorated crests and flowers in silver gilt wire
- 57 A large Indian Paisley shawl and three other Indian shawls
- 58 A Chinese white silk scarf, flowers in colours, 68in. by 28in.
- 59 A black ditto, flowers in colours, 70in. by 28in.
- 60 A heavy white silk ditto, flowers in white
- 61 A cream coloured ditto, flowers in colours, heavy
- 62 A black ditto, white embroidered flowers, heavy
- 63 A 54in. black ditto, white flowers, heavy
- 64 A cream floral embroidered blue silk kimono
- 65 A mauve ditto, flowers in colours
- 66 A turquoise blue ditto
- 67 A light blue bridge coat, printed flowers in colours
- 68 Another black ditto
- 69 A brown silk gown, printed decoration
- 70 A black silk kimono, printed flowers in colours, art silk lining
- 71 A golden yellow ditto, medallion decoration, art silk lining
- 72 A black silk wadded ditto, printed flowers in colours
- 73 A black printed crepe de chine opera coat, pine trees and house decoration

3

4

3

4

1

4

1

1

1

1

1

1

1

1

1

1

1

1

1

1

1

1

1

1

1

1

1

1

1

1

Lot

- | | | | |
|----|--|---|--------------|
| 74 | A putty-coloured printed silk coat, sakura and landscape decoration | 1 | 25/- White |
| 75 | A cream-coloured ditto, chrysanthemum decoration | 1 | 20/- ? |
| 76 | A turquoise blue printed silk opera coat, floral decoration | 1 | 44/- White |
| 77 | A black silk ditto, chrysanthemum decoration in colours | 1 | 24/- - |
| 78 | A roll of Japanese champagne coloured silk, 23ins. wide by 50 yards | 1 | 44/- Open |
| | Four similar lots. | | |
| 79 | A similar roll of nil green silk | 1 | 44/- Green |
| | Four similar lots. | | |
| 80 | A similar roll of sky-blue silk | 1 | 44/- |
| | Four similar lots. | | |
| 81 | A similar roll of light rose-colour silk | 1 | 44/- ? |
| | Four similar lots. | | |
| 82 | A similar roll of lilac silk | 1 | 44/- ? |
| | Four similar lots. | | |
| 83 | A similar roll of pink silk | 1 | 44/- Same as |
| | Four similar lots. | | |
| 84 | Three 27in. by 12 yard rolls of printed silk with floral design in colours | 3 | 44/- Same as |
| | Can be duplicated in similar design. | | |
| 85 | A similar lot, flowers on dark blue | 3 | 34/- Melby |
| | Can be duplicated in similar design. | | |
| 86 | A similar lot, various flowers on red grounds | 3 | 24/- " |
| | Can be duplicated in similar design. | | |
| 87 | A similar lot, flowers, carriage, pine tree, etc., on turquoise blue | 3 | 44/- " |
| | Can be duplicated in similar design. | | |
| 88 | A similar lot, various flowers in colours on black | 3 | 44/- " |
| | Can be duplicated in similar design. | | |

Japanese Porcelain, etc.

- | | | | |
|----|---|---|------------|
| 89 | A fine pair of 15in. Satsuma vases, decorated birds and cherry blossom, signed Kinkozan | 2 | 42/- White |
|----|---|---|------------|

Lot

- 90 A 23in. Imari plate, lacquered shishi, etc., nine illustrated Japanese books; fifty-six prints, various, and four paintings, three large silk pictures
- 91 14in. Satsuma koro, decorated Shoki and Shoji, and a pair of 10in. vases, decorated figures, birds and flowers
- 92 Six Japanese eggshell bowls, covers and saucers; nine ditto cups and saucers and seven covers, warrior decoration
- 93 Eight ditto cups, covers and saucers; phoenix and flowers; six others with only five covers, eight other pieces
- 94 An 8in. shell and octopus group, thirteen other pieces and oddments
- 95 A 22in. vase, well decorated with fighting figures

50/1 Muley
3 5/16 J. J. J.
43 20/1 Muley
30/1
10/1
1 10/1

Ivory Carvings, etc.

- 96 A card case, shibayama and gold lacquer, decorated figures cockerel and flowers
- 97 A fine 9in. carving of *Benten*, seated in a grotto with a dragon at her feet, signed *Ikko* (Kazumitsu)
- 98 A 38in. elephant tusk with small metal mount at the base
- 99 A 37in. ditto
- 100 A 36in. ditto
- 101 A 35½in. ditto
- 102 A 27in. ditto and a 26in. ditto
- 103 Two others, 21in. and 23in., and an exceptionally large pair of warthog tusks
- 104 A very finely carved 2¾in. group of a hermit crab, biting Sojobo's ear, and a frightened tengu
- 105 A large ebony work box, inlaid and overlaid with carved ivory designs, with fittings. Madras work

1 20/1 Long
1 20/1 Woodrui
1
1
1
1
2
4
1 10/1 Long
1 10/1

Netsuke.

Wood.

- 106 Tortoise on a finial tile; a sumitsubo (line marker)
- 107 Tortoise under lotus leaf; man grinding corn; hibachi, etc., signed *Konan*

2 10/1
3 21/1 Long

Ivory.

Lot

- 108 A long figure of a Dutchman with a dog *40/- Hudson*
- 109 Another, Dutchman with a trumpet and a kilin, signed *Toshimitsu* *1 40/- Hudson*
- 110 Small Dutchman with large trumpet, signed **Mitsutoshi* *1 30/-*
- 111 Small figure of a Dutchman with a trumpet, signed *Masatoshi* *1 20/-*
- 112 Jurojin (2); seated dancer; Daikoku *4 40/-*
- 113 Jurojin and Ebisu; sage and boys and four others, various *6 40/-*
- 114 An old figure of a grazing horse *1 10/-*
- 115 Hotei in his bag; Hotei and boy; Shojo, boy and ox; another *5 10/-*
- 116 Manju, carved peony; ditto, Akahito; kagamibuta, and two metal manju *5 10/-*
- 117 A well carved domestic group of a man and a boy, signed *Hideshige* *1 20/-*

Lacquer

- 118 A 6ft. four-fold coromandel screen, decorated figures, landscape, birds and flowers *1 80/-*
- 119 A similar screen *1 80/-*
- 120 A miniature cabinet of three drawers, inlaid with tortoiseshell plaques, decorated with gold lacquer, butterflies and grasses *1*
- 121 A nashiji kogo, takamakiye diaper; another, decorated as a drum; another, vine decoration; jukogo, crests and persimmon decoration *4*
- 122 Hirame kogo, decorated books; ditto, maple; roiro ditto, raised ox; jukogo, pine, etc., and a small ivory group *5*
- 123 Hirame kogo, gold takamakiye decoration of the hare and badger story (*rare subject*) *1*
- 124 A pair of 12½ in. Persian vases, decorated gods, etc., and a Japanese copper koro; and an 8½ in. Japanese cabinet of five drawers *4*
- 125 A marquetry jubako, diaper design, another, similar style, flowers and diaper *2*
- 126 A pair of small roiro boxes on a tray, decorated fan papers; a similar set in kinji, and a gold lacquer jukogo *3*

LOT

- | | | |
|-----|---|----|
| 127 | Two roiro trays, books and flowers; gold ditto, plum tree, and a hanging plaque | 4 |
| 128 | A tortoiseshell box, lacquered hawk, etc., roiro box, with decorated panels, and three small boxes | |
| 129 | A leaf-shaped tray; two inro; pipe case and box; crystal ball; white jade plaque, and four other pieces | 10 |
| 130 | A 12in. Chinese twelve-fold black lacquer table screen, finely inlaid with mother-o'-pearl figures and landscape, with inscriptions on the back | 1 |

Intro.

- | | | | | |
|-----|---|---|-----------|--------|
| 131 | Roiro, gold takamakiye and aogai decoration of a pheasant on an oak tree | 1 | 10/1/1901 | Edison |
| 132 | Kinji with raised yatsuhachi decoration, signed <i>Shunkosai Kunihiro</i> | 1 | 10/1/1901 | " |
| 133 | Tsugaru lacquer, inlaid figures and landscape in aogai | 1 | 10/1/1901 | " |
| 134 | Black dusted with gold, raised cranes in gold, silver, red and black, and gold togidashi reeds | 1 | 10/1/1901 | " |
| 135 | Kinji, raised Jo and Uba under pine tree signed <i>Kakosai</i> | 1 | 10/1/1901 | " |
| 136 | Wood, single case, shibayama inlay of fishes and leaves; gourd ditto, inlaid crest | 2 | 10/1/1901 | " |
| 137 | Kinji, raised oxen and togidashi stream | 1 | 10/1/1901 | " |
| 138 | Roiro, raised gold hawk, sparrows and pine tree, signed <i>Chikanao</i> | 1 | 10/1/1901 | " |
| 139 | Ditto, gold eagle and monkey; ditto, similar decoration | 2 | 10/1/1901 | " |
| 140 | Roiro, raised gold landscape decoration, with aogai | 1 | 10/1/1901 | " |
| 141 | Kinji, raised flowers of outumn, some flowers in aogai, signed <i>Kajikawa</i> | 1 | 10/1/1901 | " |
| 142 | Kinji: gold and silver togidashi rats, takamakiye eyes, signed <i>Shiomi Masanari</i> | 1 | 10/1/1901 | " |
| 143 | Kinji, gold takamakiye and kirikane rocks and peony plant, the flowers inlaid with mother-o'-pearl, and two shishi inlaid in ivory, and a pup in mother-o'-pearl, signed <i>Shibayama</i> , and <i>Kakasai Shozan</i> | 1 | 10/1/1901 | " |
| 144 | Brown, raised gold and brown figure of Hotei on a mule and a lily plant | 1 | 10/1/1901 | " |

- 145 Roiro, raised gold, red and black fowls, and gold togidashi bamboo, signed *Inagawa*
- 146 Red lacquer, decorated two black bears and gold rock, in relief; nashiji, decorated window and drying sheet
- 147 A wood pouch, carved frog; sentoku ditto, raised dragon; two other pieces
- 148 Roiro, raised red and green lacquer dragonflies and winter-cherries

- 149 Two Chinese hanging pictures, birds and flowers, another, boys playing
- 150 Two others, birds and flowers
- 151 Another, birds and flowers; ditto, figures; and an early Tibetan temple hanging
- 152 Two old Chinese hanging pictures, birds and flowers, signed *Zung Cheng*, Yuan dynasty; and another, a landscape
- 153 Lady beside a large lantern, signed *Utamaro*; lady on a verandah, signed *Yeisen*, both framed
- 154 A pair of Chinese old paintings, a river scene and a garden scene
- 155 A Chinese oblong oil painting, river scene
- 156 Another, house, garden and figure
- 157 Eighteen Chinese stone prints in black and white, figure subject
- 158 A book containing twenty-four landscape paintings on silk, in colours, signed *Yasukuni*
- 159 *Kakemono*, in colours on silk, *Kwanyu* and *Chohi*; ditto, tiger, signed *Tohin*; ditto, figure of lady; *makimono*, *Bugaku*, etc., dancers

Swords, Arms, etc.

- | | | |
|-----|--|---|
| 160 | A Persian shield; an Indian throwing disc, and a Persian dagger | 3 |
| 161 | A Mahratta dagger; disc throwing knife; two Indian knives, two Persian daggers | 6 |
| 162 | A gold damascened Persian helmet, two ditto armguards, a lacquer shield | 4 |

- Lot
4 163 A Japanese lacquer hat; various ditto, arrows and quiver; three ditto swords and a spear head
- 5/6 164 Two Persian flintlock guns, one with lacquered stock 2 3/4 Scott
- 30/ 5/ 165 Two Indian spears; two ditto swords; Burmese ditto; Chinese ditto; Mahratta dagger; two African paddles and a shield 10
- 30/ 5/ 166 Two old Indian flintlock pistols, with well chased silver mounts 2
- 45/ 4 167 A Gurkha knife with silver handle, and three other daggers, with various mounts 4

Japanese Sword Fittings.

- 168 Kozuka, iron, decorated bamboo; bird, etc.; shibuichi, stag and moon; shakudo, landscape 4 9/10
- 169 Ditto, shakudo nanako, inlaid in relief with a silver letter, inscribed " Henji " and signed *Mitsutada* (Illus. Nauntou) 1 3/4 John
- 170 Ditto, shakudo, flat inlay of a mandarin duck, in engraved stream, signed *Goto Mitsuyoshi* (ex. Nauntou) 1 3/4 "
- 171 Ditto, copper, finely chased and slightly inlaid with Yemma O, signed " *The dull old man of Shiho, Teikan* " 1 5/8 "
- 172 Ditto, copper nanako, inlaid flowers and grass with silver moon 1 1/6 2
- 173 Ditto, shibuichi, chased bird on tree and two small birds in sumiye honzogan, signed *Ito Masahiro* 2 1/4 John
- 174 Ditto, shakudo nanako, fowls, signed *Goto Mitsumori*; ditto, quails and grasses 2 1/4 "
- 175 Ditto, shibuichi, engraved tiger, signed *Sekijoken Motozane*; ditto Genso and Yohiki, signed *Somin* 2 2/8 "
- 176 Ditto, silver, various fishes; shishi; sentoku, bridge post and centipedes; ditto, tiger and cub and waves, signed *Masayoshi* 4 1/2 "

Varia.

- 177 A red and gold carved wood altar, 15 by 15 by 18ins. 1 1/4 Miley
- 178 A 22in. brown and gold Chinese mirror on carved stand 1 1/4 "
- 179 A 30in. gilt and red group of a diety seated on a chair 1 1/4 "
- 180 A 34in. red and gold altar with pewter altar vases 5 1/4 "
- 181 A 35in. standing gilt figure of Amida with nimbus 1 1/4 "

Lot

- 182 Six large gilt Chinese figures of deities
- 183 Six smaller ditto
- 184 Six smaller ditto
- 185 A 24in. black lacquer framed plaque, inlaid ivory cockerel; larger unframed ditto, birds and flowers
- 186 A pair of lacquer panels, decorated with Dharma and Taikobo
- 187 A 5ft. 6in. Chinese hardwood hat stand and two circular framed pictures
- 188 A 54in. hardwood square top pedestal stand and a 36in. five-fold coromandel screen
- 189 An 8ft. finely carved hardwood twelve-fold screen, with nicely embroidered silk panels on each fold, decorated figures, landscapes and poems
- 190 A 7ft. 6in. Chinese hardwood side table with carved panel under
- 191 A pair of 3ft. 2in. double-pedestal hardwood stands with square tops
- 192 A 20in. hardwood pedestal stand with inlaid marble top, a similar ditto with oblong top
- 193 A 24in. square hardwood table, 12ins. high
- 194 A 4ft. 3in. Chinese hardwood overmantel, with embroidered red panel decorated dragon, with shelf under
- 195 A 24in. black lacquer Chinese tea table, lacquered landscape
- 196 A banner fire screen, embroidered jardiniere
- 197 A 4ft. 6in. Chinese hardwood square-top pedestal
- 198 An 11 $\frac{3}{4}$ in. Chinese carved wood jardiniere
- 199 A 14in. dark red and gold lacquer seated boy, fitted for electric light
- 200 Three brass mounted Korean wooden boxes
- 201 A 12in. brass figure lamp, with silk shade
- 202 Four hardwood glazed trays with embroidered silk bases
- 203 A lacquer basket; ditto box; bird cage, nine other pieces
- 204 An Indian pulp carving of a bullock waggon, in glass shade; another shade containing leaf, etc., skeletons

6 1/2 Malsey
6 1/2 " "
6 1/2 " "
2 1/2 Ye gam
2 1/2 Malsey
3 1/2 Budden
2
1 1/2 Kibbiny
1 1/2 " "
2
2 1/2 Kibbiny
1 1/2 Spoon
1 1/2 Kibbiny
1 1/2 " "
1 1/2 Spoon
1 1/2 Spoon
1 1/2 Spoon
1 1/2 Spoon
1 1/2 Malsey
3 1/2 " "
2 1/2 " "
4 1/2 Spoon
1 1/2 Malsey
2

Lot

- 205 A Chinese lacquer work box, containing ivory fittings
- 206 A Chinese lacquer tea caddy; two Chinese bamboo carvings, shishi and boy; an oblong ivory mosaic box; ditto blotter, and a Japanese caddy
- 207 A lady's occasional chair, upholstered in Chinese silk embroidery
- 208 A 6ft. 6in. four-fold screen, with four silk panels, richly embroidered with birds and flowers
- 209 A 6ft. 3in. carved wood four-fold screen with panels inlaid brass tendrils, etc.
- 210 A 21in. angle hanging lacquered cupboard with lock and key
- 211 A 36in. marble top pedestal jardiniere stand, carved prunus
- 212 A Persian lacquered box containing scales and a silver mounted Burmese dah with carved ivory handle
- 213 An uncommon Uganda hide drum; a Mexican bolas; a South Sea pillow and an Australian shield
- 214 An Indian sword; a dried skin; elephant's tooth; five early blue glass bangles, etc.
- 215 A Malay kris; an uncommon Javanese dagger; an Indian dagger, and an Australian spear thrower
- 216 Two Chinese native copper groups representing a tree and a landscape, on stands, and a glass snuff bottle
- 217 A large linen bedspread with lace border, made up with linen squares with signature (worked on them) of various celebrities
- 218 Twenty-eight music rolls, various
- 219 Two old lamps converted for electric light, Indian brass vase and sundries
- 220 Sundry clay figures, etc. (box) and a set of kitchen scales and weights
- 221 Two bags of West Indian bead necklaces, etc.
- 222 A two valve wireless set and loud speaker
- 223 A carved spinning wheel and winder
- 224 Five pewter flagons and a jug with cover
- 225 Four pewter candlesticks, mug with lid, and three other pieces

1

6

1

1

1

1

1

2

4

4

3

1

28

box

2

2

2

6

8

1 box 43 ab

30/10 Melsby

30/10 "

1 box 10/10 Smith

1 box 10/10 "

1 box 10/10 Melsby

1 box 10/10 "

4

4

4

3

1 box 10/10 Melsby

28 box 10/10 Melsby

2 box 10/10 "

2 box 10/10 "

2 box 10/10 "

6 box 10/10 Calver

8

LOT

- 226 Thirty new Spalding tennis balls and a dozen slightly used
- 227 Various cooking utensils, etc.; two pictures and sundries, fire tile surround and fire irons
- 228 A framed miniature painting by Karl Gustav Klingstedt 1
- 229 Seven Oriental swords and a sleeve sword 8
- 230 An 18in. cloisonne vase on blackwood stand 1
- 231 Five pieces of Indian brass ware bottles, etc., writing case and sundries
- 232 A box containing Siamese and other wood carvings box
- 233 A fine old French ormolu and marble mantel clock by Balthazard of Paris, urn and figures surmount 1
- 234 An 11in. circular onyx vase, ormolu mounts, in all 13in. high 1
- 235 Two 8in. wax figures of a girl and a Queen 2
- 236 Four small wax figures, various 4
- 237 A fine horn cup, lined and with silver rim 1
- 238 A number of ivory and other Bezel centres, and an enamel plaque a box
- 239 A large quantity of coloured cut mounts for jewellers' rings, etc. a box

Old Glass, etc.

- 240 A pair of large old decanters, a set of three smaller ditto, a pair of jars with stoppers and a sugar basin 8
- 241 A pair of old wine decanters, a single ditto, and a claret jug with silver mounts 4
- 242 Six cut glass double tipped finger bowls, four cut glass specimen vases, and sundry wine glasses, etc. 50

Old China, etc.

- 243 Nine Oriental specimen cups and saucers, various 9
- 244 Various Chinese and Japanese cups and saucers, etc. tray
- 245 A graduated set of Chinese boxes 8

Lot		
246	Three old Spode plates, a bell figure and a milk jug	5
247	A silver mounted Doulton teapot and jug, and two Doulton Coronation jugs and a barrel match holder	5
248	A set of six marked <i>Spode</i> cups and saucers, floral decoration in pink and gold	6
249	A fish service of twelve plates and dish, decorated fish and flowers in colours	13
250	A Limoges service of 23 dinner plates, ten pudding plates, 12 cheese plates, and sauce boat, floral decoration	46
251	A set of ten brown glazed cups and saucers, a sugar basin and four bread and butter plates, marked <i>Wedgwood</i>	15
252	A white glaze centre piece, Cupid supports, four smaller ditto, and a pair of flower holders	7
253	Two small yellow circular jardinières, four souvenir plates, four white finger bowls, and four other pieces	14
254	A pair of 17in. blue and white Delft vases with covers	2 26/- Malsby
255	A pair of 19in. Japanese vases, red ground with panel decoration	2 48/- ?
256	Three coloured <i>Delft</i> beer mugs with pewter lids	3 20/- Malsby
257	A pair of 45in. slender Japanese vases, raised dragons and warriors in colours	2 5/- Malsby
258	Sundry commemorative mugs and other china	box 8/-
259	A pair of turquoise blue Turkish vases, two pilgrim bottles and sundry vases, etc.	8 28/- Malsby
260	Various pieces of a blue band dinner service; damask tablecloth and five other pieces of linen	12/- ?
261	Four jugs, Oriental design, sundry pieces of china and glass	14/- ?

Sheffield Plate. etc.

262	A very fine coffee urn with lamp, ivory handles, 14ins. high	1 22/-
263	An old circular Sheffield tea urn, with lamp	1 44/- ?
264	A niello cigarette case, and an engraved lady's cigarette case and match box	3 16/- Gray

Lot

- 265 A gold masonic pendant 1
 266 A Caucasian niello silver belt and purse 1
 267 A hand reduced silver maté cup with bombilla, from the Argentine, another without bombilla 2
 268 Two silver on iron damascened photo frames from Turkestan 2

13/ Cash
 24/ Hall
 12/ Mubey

Framed Old Prints, etc.

(By or attributed to the named artist.)

- 269 The Storming of Seringapatam (in colours), May 4th, 1799 1
 270 The Assault and Taking of Seringapatam, The Surrender of the two sons of Tippoo Sultan, and The Last Effort and Fall of Tippoo Sultan 3
 271 View of old London and five other prints 6
 272 Coaching scene, The Royal Family leaving for the Races, and a print entitled *At Last* 2
 273 A coloured print of the racehorse Jerry, with groom, and another of Peel with groom 2
 274 The Jockey's Prayer, two other prints, and a portrait of The Marquess of Hastings, in oils 4
 275 Six small prints, various 6
 276 The Happy Cottagers, in colours, by Barney, and portrait in oils of the racehorse *Bee's Wing* 3
 277 Eight framed photographs
 278 Nine small unframed sketches in colours, some signed by Sir Joshua Reynolds parcel

- 279 Storming the Batteries of Bahle-Serai, and five others 6
 280 Bonaparte on the quarterdeck of H.M.S. Northumberland and Stanford's Relief Map of the Isle of Wight 2
 281 The Roll Call and three others 4
 282 Indian Mutiny Defence of Arrah, and two others 3

5/ Chaloner
 10/ Joshua
 10/ " "
 5/ Mearns
 10/ Hall
 12/ Mubey
 10/ Leath

Framed Water Colour Drawings, etc.

By or attributed to the named Artists.

Lot

- 283 A pair of oval landscapes, river scenes, on glass
284 Small oval view of Gibraltar
(45) 5. 285 Two small views of Malta in one frame, and two others

2 42/- ?
1 5/- ?
3

Framed Oil Paintings.

By or attributed to the named Artists.

- 286 Musicians playing, and portrait of a lady
287 A small group of vegetables, and another
(49) 10. 288 A small forest scene, carved wood frame
(49) 10. 289 A portion of Embassy of Hyderbeck, Vizier of Oude to Calcutta, an elephant destroying his driver and women and children falling from the elephant's back
290 The Judgment of Solomon, 16in. by 26in. high, on panel
291 Roman soldiers arresting Christ, 31in. by 25in. high
292 The Judgment of Solomon on canvas, 42in. by 31in. high
(49) 40. 293 Four tiger hunting scenes, 22in. by 28in. high
294 A small pair of portraits, a man reading a letter, and a monk examining wine
295 Portrait of the racehorse *Sacripont*
296 Small fruit picture attributed to *Lance*, signed T.W. 1859
297 Interior of a Spanish antique dealer's shop

2 15/- ?
2 10/- ?
1 20/- Melny
1
1 10/- Chalow
1 18/- Melny
1 18/- ?
4
2 32/- Cash
1 8/- ?
1 20/- Melny
1 40/-

Books.

- 298 History of British Birds (2), and History of British Fishes (2), both by *Gouch*, coloured illustrations
299 History of British Moths (2), British Butterflies (1), both by *J. O. Westwood*
(45) 6. 300 A lot of sundry books in two bundles

4 16/- Melny
3 10/-
79

Lot

- 38/ 4' 301 The American Revolution (2), by Sir Geo. O. Trevelyan,
Bart., and other works 19
- 36/ 5' 302 Japan's Fight for Freedom (3), L'Egitto Antigo e Moderno
(2), and other works 37
- 36/ 4' 303 Living Animals of the World, and works by various authors 13
- 304 Lysistrata, coloured illustrations, and Life of Massenet,
illustrated 2
- 305 The Landseer Gallery, Foreign Tour of Brown, Jones and
Robinson, and 70 cartoons from Vanity Fair 3

Carpets, Rugs, etc.

- 306 An 8ft. by 4ft. 6in. Persian rug, red ground 1
- 307 Two *Khelim* rugs, 9ft. by 4ft. 6ins., and 6ft. 9in. by 4ft.,
red ground 2
- 308 A 12ft. by 5ft. *Khelim* rug, conventional design 1
- 309 A 7ft. by 4ft. 6in. Persian rug, floral decoration 1
- 310 A pair of 12ft. by 3ft. 6in. Persian rugs 2
- 311 A Persian rug, 9ft. by 3ft. 6in. 1
- 312 A 10ft. 9in. by 3ft. 1in. Persian runner 1
- 313 A fine 20ft. square Turkey carpet, red ground with floral
decoration and blue ground border 1
- 314 A 16ft. by 12ft. old Turkey carpet, red ground floral design,
border with blue ground 1
- 315 Six sheets; table cloth; and three other pieces 10
- 316 Sundry curtains, etc., a bundle 1
- 317 Four blankets 4

Furniture, etc.

- 318 An old carved mahogany Chippendale arm chair, loose seat
upholstered in red leather 1
- 319 An old carved mahogany dining chair, with arms, up-
holstered in leather 1

Lot

320	An old oak tallboy, fitted long and short drawers, 4ft. 9in. high	1
321	A set of six old Georgian chairs	6
322	An oak armchair, with loose seat	1
323	An old 3ft. mahogany French commode, oak lined, drop handles and decorated in colours	1
324	A 28in. lobed occasional table with falling sides leaving a square top of 18in., turned splay legs	1
325	A 4ft. mahogany chest of five long drawers, bow top and drop handles	1
326	A lady's chair, upholstered in tapestry	1
327	A set of six light oak dining chairs, upholstered in red plush	6
328	A high back carved oak chair, upholstered seat and panel in back	1
329	An 11in. hanging mirror with print at top, in all 47in. high, and a chair with leather seat and back	2
330	<i>An old English ebonized table clock with ormolu mounts, chimes on bell gong, has musical box in base, stands on ormolu mounted table. Clock at base 3ft. long and in all 3ft. 6in. high. Table 3ft. 3in. long and 30in. high. This clock has been thoroughly overhauled and is guaranteed in perfect going order</i>	
331	A very fine crystal glass candelabra with 15 arms, fitted with a large number of crystal drops	1
332	A 60in. inlaid overmantel with bevelled plates and a cornice	2
333	A 48in. circular table, carved pedestal	1
334	An 84in. carved oak sideboard with high back	1
335	A 22in. by 15in. bevelled mirror, a basket of sundries	2
336	A revolving office mahogany arm chair	1
337	A 2ft. 6in. combination bedstead, overlay, two pillows	
338	A 4ft. burr walnut bedstead, spring mattress, wool overlay, bolster and two pillows	—
339	A 2ft. 6in. kitchen table, four kitchen chairs	

Lot		
340	A wicker chair and a child's chair, oven, bread pan, etc.	—
341	Three rolls of lino and a roll of stair lino	4
342	Four others rolls	4
343	An "Hygena" kitchen cupboard	1
344	A set of four oak dining chairs, pegamoid loose seats	4
345	A pair of pegamoid arm chairs, with loose cushions and a 4ft. ditto settee	3
346	A three-piece leather covered suite of two arm chairs, and a 4ft. 3in. settee, loose cushions	3
347	A 3ft. 3in. octagonal inlaid walnut table	1
348	A 3ft. oak dressing table, with swing glass, and a ditto washstand, and a 3ft. 9in. hanging wardrobe, en suite	3
349	A walnut bedroom suite, comprising a 3ft. 6in. wardrobe, ditto dressing table with swing mirror, and a 3ft. washstand with three drawers	3
350	A 5ft. inlaid ebonised cabinet, rounded ends, centre cupboard with decorative panel	1

END OF SALE.



Periodical Sales.

POSTAGE STAMPS,

ANTIQUE CHINA, SILVER PLATE, &c.

OIL PAINTINGS AND WATER COLOURS,

COLOURED PRINTS, ENGRAVINGS, &c.

COINS, WAR MEDALS AND DECORATIONS.

OLD CHINESE AND JAPANESE CURIOS, &c.

Terms 12½ per cent. ; minimum charge on any lot, 2/6.

Entries can now be received.



THE ARGYLL GALLERY

NOTICE.

Auction Sales

Of Postage Stamps are held on alternate Tuesdays and
Wednesdays each Month throughout the Season.

NEXT SALE February 17th, 1931

Furniture, Plate, &c.

NEXT SALE Will be duly advertised.

Coins and Medals.

NEXT SALE February 19th & 20th & March 9th & 13th, 1931

Oriental Art.

NEXT SALE February 25th, 1931

Open daily for the reception of Fine Art Property,
Jewellery, Plate, China, Coins, Medals, Stamps,
Furniture, etc.

Particulars of these Sales will be found advertised every Saturday in the
"Times."

VALUATIONS MADE FOR PROBATE AND FIRE INSURANCE.

TERMS ON APPLICATION.

Messrs. Glendining & Co., Ltd.

CONDUCT AUCTION SALES OF

SILVER, JEWELLERY, ANTIQUE
FURNITURE, VIOLINS

War and Commemorative Medals - Coins
Postage Stamps - Fine Art - etc.

WEEKLY THROUGHOUT THE SEASON.

PRICED COIN AND MEDAL CATALOGUES, 2/- each, post free.
AND STAMPS, 2/- each, post free.

*CASH ADVANCES, IF REQUIRED,
ON LOTS SENT FOR
ABSOLUTE SALE.*

Lots to be included in these Sales
should be sent in as soon as possible.

PROMPT SETTLEMENTS.

GLENDINING & CO., Ltd.
7, ARGYLL STREET, OXFORD CIRCUS, W. 1

Forby and Son, The Triangle Printing Works, Bournemouth