

## **Sales catalogue: Puttick and Simpson**

### **Publication/Creation**

4th March 1920

### **Persistent URL**

<https://wellcomecollection.org/works/pg2wmtr2>

### **License and attribution**

This work has been identified as being free of known restrictions under copyright law, including all related and neighbouring rights and is being made available under the Creative Commons, Public Domain Mark.

You can copy, modify, distribute and perform the work, even for commercial purposes, without asking permission.



Wellcome Collection  
183 Euston Road  
London NW1 2BE UK  
T +44 (0)20 7611 8722  
E [library@wellcomecollection.org](mailto:library@wellcomecollection.org)  
<https://wellcomecollection.org>

*McNeill's Original*

**The Francis Bennett-Goldney  
Collection**

**ENGLISH-DELFT**

---

---

**THURSDAY, MARCH 4th, 1920**

---

---

**PUTTICK & SIMPSON  
LONDON**





Telephone: Gerrard 1561

Established 1794

Telegrams: "Puttickdom, Westrand, London"

W.A.H.M.M./am/Sa1/6/154

CATALOGUE  
OF  
**ENGLISH-DELFT**  
AND  
**Ancient Roman Pottery**

Exhibited at the London Museum,  
Royal Canterbury Museum,  
and  
Burlington Fine Arts Club

The property of the late Major F. BENNETT-GOLDNEY,  
M.P., F.S.A., of Abbott's Barton, Canterbury

---

Which will be Sold by Auction

*By Order of the Executors, with the Concurrence of the High  
Court of Justice (Chancery Division)*

BY

**Messrs. PUTTICK & SIMPSON**

At 47 LEICESTER SQUARE, LONDON, W.C.2

On THURSDAY, MARCH 4th, 1920

AT TEN MINUTES PAST ONE O'CLOCK PRECISELY

---

May be viewed the two days prior from 10 a.m. until 5 p.m.



## CONDITIONS OF SALE.

---

I. The highest Bidder to be the Buyer; and if any dispute arise between two or more Bidders, the Lot so in dispute shall be immediately put up again and re-sold.

II. The Auctioneer shall regulate the bidding as he may think advisable.

III. In the case of Lots upon which there is a reserve, the Auctioneer shall have the right to bid on behalf of the Seller.

IV. The Purchasers to give in their Names and Places of Abode, and to pay down 5s. in the Pound, or more, in part of payment, or the whole of the purchase money, *if required*; in default of which, the Lot or Lots so purchased to be immediately put up again and re-sold.

V. The Lots to be taken away and paid for, whether genuine and authentic or not, with all faults and errors of description, at the Buyer's expense and risk, within Two Days from the Sale; Messrs. PUTTICK & SIMPSON not being responsible for the correct description, genuineness, or authenticity of, or any fault or defect in, any Lot, and making no warranty whatever.

VI. To prevent inaccuracy in delivery, and inconvenience in the settlement of the Purchases, no Lot can on any account be removed during the time of Sale; and the remainder of the Purchase-Money must absolutely be paid on the delivery.

VII. Upon failure of complying with the above Conditions, the Money deposited in part of payment shall be forfeited; all Lots uncleared within the time aforesaid shall be re-sold by public or private Sale, and the deficiency (if any) attending such re-sale shall be made good by the defaulter at this Sale.

*Buyers who cannot attend the Sale, may have their Commissions faithfully executed by their obedient Servants,*

PUTTICK & SIMPSON.

Auction Rooms for the Sale of  
All Fine Art Property,  
LEICESTER SQUARE, LONDON, W.C.

---

Collections Catalogued, Arranged and Valued for the Probate  
and Legacy Duty or for Public or Private Sale.

---

ESTABLISHED 1794.

THURSDAY, MARCH 4th, 1920.

AT TEN MINUTES PAST ONE O'CLOCK PRECISELY.

**THE LOAN COLLECTION,**  
Exhibited at the Royal Canterbury Museum.

*Lots 1 to 81.*

**ROMAN AND GREEK POTTERY VASES**  
and other Antiquities, chiefly found in Gt. Britain.

- |                     |   |   |    |
|---------------------|---|---|----|
| 21/- ?              | 1 | A Roman vessel in grey unglazed pottery, ovoid body narrowing to the base, 10 $\frac{1}{4}$ in. high, three cinerary urns in the same ware, one with calcined remains, and a small vase with ovoid body                                   | 5  |
| 15/- <i>William</i> | 2 | Six Roman vessels in unglazed ware, of various types  | 6  |
| 21/- <i>William</i> | 3 | Four cinerary urns, Roman, one containing calcined remains  | 4  |
| 21/- <i>Aslin</i>   | 4 | Five unglazed vessels of early English pottery, one with scratched zigzag design, mostly perfect specimens  | 5  |
| 15/- <i>Aslin</i>   | 5 | Ten coarse earthenware bowls, unglazed, mostly in fine condition and interesting types  | 10 |
| 21/- <i>William</i> | 6 | Eight miscellaneous vessels, some in the well-known Upchurch ware, found at Canterbury and other places   | 8  |
| 21/- "              | 7 | Twelve others, found at Canterbury, Faversham and elsewhere, including specimens of Upchurch ware: mostly perfect   | 12 |
| 20/- <i>Laure</i>   | 8 | Five Samian ware vessels comprising a bowl, 7 $\frac{1}{2}$ in. diam., with frieze of animals (restored), another, 6 $\frac{3}{4}$ in. diam., with dog and rabbit in design (restored), a shallow bowl, plain, 9in. diam., and two others | 5  |
| 10/- <i>Laure</i>   | 9 | Five Samian ware saucers, plain; two fragments of ditto, one with potter's stamp, and a portion of a large Samian bowl, with panels depicting a lion and a bull hunt: the latter important and fine                                       | 8  |



- 307- *Laurence* — 10 Ten small Samian bowls, and two imperfect ditto, some bearing potter's stamps, and with raised designs, also a small unglazed bowl, Roman 13
- 21/- " — 11 A Samian ware patera, 11 $\frac{1}{4}$ in. diam., with potter's stamp, a ditto bowl, 11in. diam., with impressed design, and three other specimens. 5
- 4 $\frac{1}{2}$ g. *Fenton* — 12 AN IMPORTANT ROMAN VASE IN THE FAMOUS BLACK CAISTOR WARE, 11in. high, with spirited design in high relief representing a stag-hunt. Restored 1
- 357- *Fenton* — 13 A miscellaneous lot of antiquities, comprising a fine flint axe, found at Goodnestone in Aug. 1903, a leaden Roman spoon found in Forty Acres Field, Rochester, a copper ditto, a bronze pendant, with enamelled star in centre, a Roman nail, a string of Roman beads, found in Forty Acres Field, Rochester, etc., etc. 15
- 7 $\frac{1}{2}$ g. *Aston* — 14 A Roman cinerary urn in glass, excavated at Rochester, a fine perfect specimen, 9 $\frac{1}{4}$ in. high, also a small Roman vase 2
- 5g. *Fenton* — 15 A small Greek hydria, 7in. high, with red figure decoration of a Greek girl and an ephebe 1
- 9 $\frac{1}{2}$ g. " — 16 Another, larger, a youth with spear pursuing a maiden. The vase belongs to the fine period, and is in splendid condition 1
- 3g. " — 17 A gold penannular armilla, of twisted design, terminating in lions' heads. Fine 1
- 20/- *Aston* — 18 A Greek terra-cotta figure of a seated goddess, archaic type, excavated at Rochester, 8 $\frac{1}{2}$ in. high 1
- 1 $\frac{1}{2}$ g. " — 19 An Anglo-Norman long-pot, with incised bands, handle missing, an early Tudor (circa 1500) black glaze jug; a one-handled beaker in the same ware a brown-glazed vessel with indented sides, perhaps Roman, and two others. All interesting 6
- 30/- *Aston* — 20 Eight black-glazed Tudor vessels, of various forms, all of the 16th century. Rare 8
- 21/- " — 21 Four yellow-glazed pottery vessels, of the Elizabethan period, comprising three full-bodied jugs, and a two-handled water jar, with wide neck 4
- 10/6 *Laurence* — 22 Seven miscellaneous glazed pottery vessels, comprising two apothecary's jars in white glaze, a small jug, with slip decoration, etc., etc. 7
- 3g. *Aston* — 23 Three English pottery vessels in the tiger-ware glaze, comprising a Bellarmine-shaped vessel, inscribed JOHN PRICE, 1724, a long-pot with armorial bearings, and another. Also a brown-glazed stoneware wine vessel, inscribed WW. 1725 4
- 85/- " — 24 Three brown-glazed stoneware Bellarmine, two with raised work decoration, the third plain 3

- 10/6 Aston 24A A silver-mounted 18th century stoneware mug, with glass base 1
- 10g. " 24B A Nottingham cylidrinca tankard, inscribed "When all our toils are ore, I.F.B. 1788,"  $6\frac{1}{4}$  in. high, and a brown-glaze flask with star decoration and date, January 17th, 1797,  $5\frac{1}{2}$  in. diam.
- g. Andrange } 24C A brown-glaze loving cup, with inscription and initials F. M. B. 1820, 9 in. high.
- 24D A Whieldon cream glaze bowl, painted with an equestrian figure, and with initials W. G. 1743 on the interior, the exterior with standing figures, 11 in. diam.

### ENGLISH-DELFT.

- 557-Aston 25 A Lambeth-Delft pharmacy jug, inscribed O. HYPERIC in a cartouche composed of cupid scrolls and flowers in polychrome, and with initials and date I. P. 1723,  $6\frac{3}{4}$  in. high.
- 301- " 26 Another, Italian, painted with cupids in a landscape, MEL ROY SOL, and with armorials in scroll cartouche, initials G. T.,  $7\frac{3}{4}$  in. high.
- 5g. " 27 Three Lambeth pharmacy jugs, inscribed O. SAMBRIC, S. SIMONI, and S. CYDONIOR, in scroll cartouches, with cupids' masks and flowers in blue,  $7\frac{1}{2}$  in. high.
- 4g. " 28 Another, Lambeth-Delft, inscribed C. + R., with two hearts and date 1667, surrounded by flower branches in blue,  $7\frac{1}{2}$  in. high.
- 4g. " 29 Three Lambeth-Delft pharmacy jars, inscribed U. BASILIC, CER. MERCUR, and V. APOSTOLOR, in cartouches composed of cupids, birds and scrolls,  $7\frac{1}{2}$  and  $7\frac{3}{4}$  in. high.
- 4g. " 30 Three others, of the same type, inscribed THER. LOND., C. OXYACANTH, and E. MITHRIDAT,  $6\frac{3}{4}$  to  $7\frac{3}{4}$  in. high.
- 22g-? 31 Two others, inscribed C. RUBR, ROSAR, DIASCORD, F., and another, without inscription,  $6\frac{3}{4}$  to  $7\frac{3}{4}$  in. high.
32. Henref 32 Two Lambeth-Delft jugs, painted with leaves and flowers in blue, the necks ribbed,  $6\frac{3}{4}$  in. high, another, smaller, and a ditto, inscribed LONDON MUSTARD, 6 in. high.
- 22g-? 33 A pair of similar jugs, modelled with portraits of George III. in oval medallions, and incised with flowers in blue, 6 in. high, and a small jug, painted with a bird and flowers in blue.
- 2g. ? 34 A pair of Lambeth-Delft vases painted with pastoral scenes and figures in blue, lion's mask handles,  $9\frac{1}{2}$  in. high.



- 21/- *Aston* 35 An old English-Delft mug, painted with birds and flowers in the Chinese taste in blue, inscribed with initials I. D., said to be those of JOHN DYER, of Chichester,  $5\frac{1}{2}$ in. high.
- 25/- *Bermick* 36 A Staffordshire-Delft coffee-pot, painted with vases of flowers in blue in the Chinese taste, swan's head handle,  $6\frac{1}{4}$ in. high, and a jug, painted with a bird and flowers in blue, pewter cover,  $7\frac{1}{2}$ in. high.
- 16/- *Fauler* 37 A Delft cylindrical tankard, painted with a Prince of the Royal House, his hand resting on a crown, with sceptre and cushion on a table, on the other side of which a monk is praying, and with inscription, pewter cover,  $7\frac{1}{2}$ in. high, and another, painted with a saint in a cartouche in blue, 6in. high.
- 12/- *Aston* 38 A Delft cylindrical posset pot, with two handles and spout, painted with peacocks, other birds and flowers in the Chinese taste in blue, by DE PAAUW,  $5\frac{1}{2}$ in. diam.
- 4/- *Sutton* 39 A Lambeth-Delft pharmacy vase, inscribed A. FUMARLÆ, in a blue cartouche formed of peacocks, fruit, etc., 11in. high, and a vase, painted with Chinese willow pattern, with a border of flowers,  $9\frac{1}{2}$ in. high.
- 35/- *Cole* 40 A Lambeth-Delft bottle, painted with bowls of flowers in the Chinese taste in blue, the neck with initials T. M.,  $10\frac{3}{4}$ in. high, and another, nearly similar,  $9\frac{3}{4}$ in. high.
- 15/- *?* 41 An old French Fayence ewer, of Cellini design, painted with male and female busts, foliage, etc., in panels in blue, outlined with brown, the spout formed as a dolphin's mask, the handle as a female caryatid,  $11\frac{3}{4}$ in. high.
- 2 1/2/- *Aston* 42 A pair of Lambeth-Delft jugs, with twisted rope pattern handles,  $7\frac{1}{2}$ in. high, another, spirally fluted, 10in. high, and a plain posset pot and cover, with two handles and shaped spout.
- 7/- *Petheridge* 43 A Lambeth-Delft puzzle jug, inscribed in blue "Here Gentlemen come try your Skill," etc., painted with flowers, and with pierced neck, 7in. high.
- 3/- *Lacorne* 44 Another, painted with flowers in polychrome,  $6\frac{1}{4}$ in. high, two small pharmacy jars, inscribed P. EXTR. CATHOL and P. R. GIALAPPÆ in blue cartouches,  $4\frac{1}{4}$ in. high, and two square inkstands, painted with flowers in the Chinese taste,  $3\frac{3}{4}$ in. square.
- 2/- *?* 45 Two Bristol-Delft cylindrical tea caddies, painted with ships, and with figures in the Chinese taste in panels, the borders designed with masks and scrolls in the Renaissance manner in blue, the base marked M. 1751,  $3\frac{3}{4}$ in. high.
- 18/- *?* 46 A Lambeth-Delft cylindrical inkstand, painted with flowers in the Chinese taste in blue, inscribed SAMUEL GARDNER, LONDON, W. G. fecit 1756,  $3\frac{3}{4}$ in. diam.



- 2 g. 3 47 A pair of Dutch heart-shaped inkstands, painted with flowers in polychrome, 5in. wide, a figure of a cat, painted with flowers in blue, 5½in. high, and a staff top, inscribed VIVAT ORANJE, 2¾in. high.
- 4 g. 3 48 A Lambeth-Delft octagonal tea caddy, painted with a Merry Andrew and other figures in panels on diaper ground in blue, 3¾in. high, and a salt glaze square tea caddy, incised with flowers in blue, and inscribed GRACE MOORE, Mar. 8th, 1771.
- 3½ g. 2 49 A Delft posset-pot and cover, with one handle, painted with a landscape and figures in blue, the base dated 1762, and part of a wine bottle, inscribed WHTT, 4¼in. high.
- 10/6 9 50 Eight Lambeth-Delft small jars, found at Dean's Yard, Westminster, etc.
- 30/- 35/- 51 Twelve others, in different sizes, some with coloured glaze.
- 25.0.0 52 A Lambeth-Delft rectangular money box, with three tiers, painted with scriptural and other figure subjects, in brown and blue, 9in. high.
- 30/- 2/6 53 A Dutch cylindrical jardinière, painted with formal flowers in polychrome, 7¾in. diam., an octagonal dish, with similar decoration, 12½in. wide, a circular dish, painted with a crab, by J. L. HAMON, 1862, a Lambeth vase, with pierced top, and two ditto circular vessels.
- 25/- Ashm 54 Two Lambeth dishes, with deep centres and ribbed borders, 12¾in. and 12¼in. diam., and a dish of Bristol-Delft, painted with a group of flowers in blue in the Chinese taste, 12in. diam.
5. 8/6 Ashm 55 A Lambeth-Delft oblong plaque, painted with Joseph and Potiphar's wife in blue, 7½in. by 10½in.
- 21/- 3 56 A pair of Lambeth-Delft plates, painted with flower sprays in the Chinese taste in panels, divided by dark blue bands with trellis ornament, 9in. diam.
- 17/- 2 57 Five Sussex-Delft plates, the centres inscribed DAVID MANSUR, RYE, the borders with narrow bands of running ornament in brown, 9¼in. diam.
- 4 g. Ashm 58 A Lambeth circular dish, inscribed E. G. encircled by laurel branches in blue, 10¼in. diam., and a ditto plate, inscribed in blue with initials T. R. I. 1693, in a scroll cartouche ornamented with griffins, and surmounted by a crown, 9in. diam.
- 8½ g. 2/6 59 A Staffordshire plate of salt-glaze ware, inscribed in the centre T. S. H. 1700 encircled by laurel wreath in blue, 8¾in. diam., made by Aaron Wedgwood for Thomas and Susanna Horn.
- 3½ g. 2 60 A Lambeth plate, painted with a coat of arms and scroll mantling in blue, inscribed with date 1662, 8¼in. diam., and another, inscribed I. E. N. 1720, encircled by a laurel wreath in blue.



- 5g — 61 Two Lambeth plates, inscribed W. W. G. and N. E. A. 1696 and 1742 in blue cartouches formed as scrolls, griffins, masks, etc., and surmounted by crowns,  $8\frac{3}{4}$  in. diam.
- 12g. Cole 62 Five Lambeth plates, inscribed M. E. B. 1697, in blue cartouches composed of griffins' masks, etc., and surmounted by coronets, 10 in. diam.
- 7g. 3 63 A Lambeth circular dish, painted in the centre with a coat of arms, a deer, and *fleur de lys* in scroll mantling, inscribed with initials B. H. H. R. 1696, the deep border with flower sprays in blue,  $11\frac{1}{2}$  in. diam.
- 6½g. Etheridge 64 A Bristol octagonal dish, the centre painted with a seaport scene in panel, surrounded by others with flowers and fan ornaments in blue, on a ground of powdered manganese, 12 in. diam.
- 3½g. 8 65 A Lambeth tazza, entirely painted with a landscape and buildings, a dog in the foreground in blue with brown outline, inscribed in the centre M. A. B. S. 1740, on dome foot,  $11\frac{3}{4}$  in. diam.
- 1½g. 3 66 A Dutch circular dish, painted with a bird surrounded by flower sprays in polychrome, the fluted border with petal panels,  $13\frac{1}{2}$  in. diam.
- 6g. Etheridge 67 A DUTCH CIRCULAR DISH, painted with portraits of William III. and Mary under a drapery canopy, inscribed K.W. v B.T. EN. KIN., the border with lotus in the Chinese taste,  $13\frac{1}{2}$  in. diam.
- 7½g. Ashm 68 A STAFFORDSHIRE "BLUE DASH CHARGER," painted with a portrait of the Duke of Marlborough standing in a landscape in blue, yellow and green, inscribed D. M.,  $11\frac{1}{2}$  in. diam. See illustration.
- 21g. Lomas 69 ANOTHER, painted with portraits of William III. and Mary wearing their robes of State, in blue and yellow, and inscribed W. M. R., 13 in. diam. See illustration.
- 18g. Cole 70 ANOTHER, painted with an equestrian portrait of William III. in a landscape in polychrome, and inscribed W. R.,  $13\frac{1}{2}$  in. diam.
- 32g. Lomas 71 ANOTHER, painted with a figure of William III. wearing his robes of State standing in a landscape, and inscribed K. W.,  $13\frac{1}{2}$  in. diam. See illustration.
- 8½g. Etheridge 72 ANOTHER, painted with a portrait of Prince Eugene of Savoy wearing armour, and standing in a landscape, in blue, green and yellow, inscribed P. E., 13 in. diam.
- 7g. Dunn 73 ANOTHER, painted with an equestrian portrait, possibly of the Duke of Marlborough, in polychrome,  $13\frac{3}{4}$  in. diam.
- 5½g. Ashm 74 A Lambeth oval shaped dish, painted in blue with a landscape with buildings and carriage on a road, the border with foliage scrolls and drapery festoons,  $21\frac{1}{2}$  in. wide.
- 9½g. Cole 75 A LAMBETH DISH, with deep centre and ribbed border, inscribed in the centre with initials G. P. M. 1654 in a scroll cartouche in blue,  $13\frac{1}{2}$  in. dish.

49. Ashm 76 ANOTHER, larger, similarly inscribed R. M. R. 1670, in a cartouche composed of scrolls, cupid's mask and drapery, 17 $\frac{1}{4}$ in. diam.
149. Lamer 77 A BRISTOL PUNCH BOWL, the interior painted with portrait of Admiral Rodney, and with inscription "ADMIRAL RODNEY FOR EVER," the exterior with flower sprays in blue in the Chinese taste, 9in. diam.
39. E. H. 78 ANOTHER, the interior inscribed "One bowl more and then," surrounded by fan ornaments and flower sprays in the Chinese taste, *bianca sopra bianca*, the exterior with a Chinese river scene in polychrome, 9in. diam.
29. ? 79 Two Bristol bowls, painted with flowers and fencing in the Chinese taste in blue, and with roses and foliage festoons, 10 $\frac{1}{2}$ in. and 9in. diam.
9. ? 80 A Bristol punch bowl, painted with fish in blue, on a ground of powdered manganese, 10 $\frac{1}{4}$ in. diam.
629. ? 81 A BRISTOL LARGE PUNCH BOWL, the interior painted with a Chinese landscape in blue, surrounded by borders of flowers, scrolls and diaper pattern, inscribed "Success to the British Arms," the exterior with an extensive river scene, 17in. diam. See illustration.

119. Coll. 81 A *Dring jar. See illustration*

179. Lamer 81 B. *" "*

81 C *" "*

## THE LOAN COLLECTION,

Exhibited at the London Museum.

Lots 82 to 146.

349. Lamer 82 A Lambeth portrait plaque, "THE MOST ILLUSTRIOUS PRINCESS ANNA SOPHIA OF HANOVER," dated on the reverse 1704, 8 $\frac{1}{2}$ in. by 6 $\frac{1}{2}$ in.
829. ? 83 A Lambeth plaque, in the form of a shield, painted with the Arms of the Apothecaries Company, composed of St. George and the Dragon, with scroll mantling and two unicorns, inscribed "Opiferque per orbem dicor," 12 $\frac{1}{4}$ in. by 10 $\frac{1}{4}$ in.
829. Coll. 84 Another, with the same Arms differently designed, but similarly inscribed, 11in. by 9 $\frac{1}{2}$ in.
29. Lamer 85 A Lambeth slipper, tied with a bow in relief in blue, and with dotted decoration, initialed I. E. H. 1654, 6 $\frac{3}{4}$ in. long.
29. " 86 A Lambeth triple tyg, with interlaced handles, 3 $\frac{1}{4}$ in. high.
629. " 87 A Lambeth salt cellar in the form of an octagonal pedestal, of bluish green glaze, 4in. high.



- 10g. Aslon 88 A Wattisfield (Suffolk) square caddy, the sides with alternate panels of chequer and diamond patterns in pale yellow and brown,  $5\frac{3}{4}$ in. high.
- $1\frac{1}{2}$ g. ? 89 A Lambeth small tankard, with reeded borders, the plated cover engraved with a foliage wreath, and inscribed G. L. S. S. F., A. E. D. 1695, the billet formed as a falcon,  $4\frac{1}{4}$ in. high.
- $4\frac{1}{2}$ g. Sutton 90 Two Lambeth pharmacy jars, inscribed in blue SAL. CATHA and U. DE ALTHÆA in blue, in cartouches composed of masks, birds and foliage,  $7\frac{1}{2}$ in. and  $6\frac{3}{4}$ in. high.
- $4\frac{1}{2}$ g. " 91 Two ditto small pharmacy jars, inscribed T. D. ABSIN and P. ALEPHANG in blue, in similar cartouches,  $3\frac{1}{2}$ in. and 4in. high.
- 7g. " 92 Another, of cylindrical form, inscribed BENEDICT. LAX, in ribbon cartouche, and with initials and date, I. F. 1664,  $7\frac{3}{4}$ in. high. See illustration.
- 3g. 93 A Lambeth pharmacy bottle, inscribed Aq. BORAGINIS, in blue, in a cartouche composed of peacocks, basket, festoons of fruit, etc.,  $10\frac{1}{4}$ in. high.
- $8\frac{1}{2}$ g. Lyons 94 A Lambeth pharmacy jug, inscribed S. MYRTINUS, in ribbon cartouche surmounted by a female mask, and with initials M. B. 1668, in blue,  $8\frac{3}{4}$ in. high.
- $9\frac{1}{2}$ g. Sutton 95 A Lambeth large pharmacy jar, inscribed DIASCORD in a cartouche composed of a shell and foliage, surmounted by a head of a saint, and with initials M. K. 1717,  $13\frac{1}{4}$ in. high.
- 14g. " 96 A Lambeth large cylindrical jar, inscribed CURRANTS, in a cartouche composed of baskets of flowers, foliage and shell ornament in blue, 14in. high.
- 1g. ? 97 A Bristol flask, formed as Venus riding on a dolphin in the sea, coloured blue and yellow outlined with brown,  $7\frac{1}{2}$ in. high.
- 3g. ? 98 A Lambeth flask formed as a pineapple, with four open handles for cord attachment,  $9\frac{1}{2}$ in. high.
- $2\frac{1}{4}$ -Lancaster 99 A Fulham jug, the brown glaze border painted with flowers in medallions,  $6\frac{1}{2}$ in. high, and two early fragments of pottery in the form of a male mask, and the lower portion of a figure.
- 42g. Turner 100 A LAMBETH-DELFT SMALL VESSEL, with handle, painted with portrait of Charles II. wearing robes of State, Crown, and holding the Sceptre and Orb, in an arched panel supported by columns, in polychrome, and inscribed C. R.2. 1662, 3in. high.
- 10g. Haddon 50/- 101 A Lambeth bleeding cup, painted with initials D. A. R. 1711, in blue, surrounded by a foliage wreath, the handle of shell form,  $5\frac{1}{4}$ in. diam. 10g. Haddon
- 62g. Aslon 102 An Elizabethan jug, with cylindrical neck, and shaped handle, of mottled blue glaze, 4in. high.



- 1½g. Sutton 103 A tiger ware jug, with silver band round the neck, engraved with foxes and conventional foliage, and initialed N. A., *English, early XVIIth century, 5½in. high.*
- 104 Another, the cylindrical neck with deep silver mount, repoussé with arabesques and acanthus foliage, *English, XVIIth century, 7in. high.*
- 105 ANOTHER, of the Elizabethan period, splashed with several colours, the cylindrical neck with deep silver band, repoussé with a border of strap-work, formed as Tudor roses, linked by panels of rectangular form, the mount at the foot with punched and engraved borders, *7in. high.*
- 106 ANOTHER, of similar form, of splashed manganese, the silver border engraved with conventional foliage, and with plain dome cover, the billet formed as a female bust, *English, XVIIth century, 8in. high.*
- 64g. Turner 107 A Lambeth fable candlestick, of cylindrical form, with dome foot, painted with the Arms of Canterbury in blue, the foot inscribed W. S. 1698, *9½in. high.*
- g. Sutton 108 A Lambeth flagon, with plain silver dome cover, the billet in the form of a mask of Apollo, *8¼in. high.*
- g. Coles 109 A sack bottle, of powdered manganese, *6¼in. high.*
- g. — ? 110 A small jug of Lambeth ware, with ribbed neck, inscribed in blue "J. FAWSIT 57 Paddington Street Mary Le Bone," *5½in. high.*
- ½g. Turner 111 A small sack bottle, of Lambeth tin-enamel, *5¾in. high.*
- 2g. Turner 112 Another, of similar form, inscribed in blue CLARET 1640, *5¼in. high.*
- g. — 113 Another, similarly inscribed CLARET 1644, *5½in. high.*
- 4g. Sutton 114 Another, larger, also inscribed CLARET 1645, *6½in. high.*
- g. — 115 A Lambeth sack bottle, inscribed in blue SACK 1658, *5½in. high.* 1668
- 19g. Turner 116 Another, larger, similarly inscribed SACK 1647, *6½in. high.*
- 9g. Sutton 117 Another, inscribed with initials K. I. SACK 1642, *7in. high.*
- 24g. Hyam 118 Another, inscribed SACK 1650, *7¾in. high.*
- 7g. — ? 119 Another, similarly inscribed SACK 1651, *6¾in. high. See illustration.*
- 3.9 — ? 120 Another, with blistered white glaze, inscribed in blue SACK 1641, *6½in. high. See illustration.*
- 6g. Turner 121 A Lambeth sack bottle, inscribed WH. WINE 1556, *5½in. high.* 1656
- 72g. Hyam 122 Another, larger, inscribed WHITE WINE 1640, *6½in. high. See illustration.*
- 6g. Turner 123 Another, painted with the Crown of Charles I. inscribed on either side WHIT WINE 1642, *7¾in. high. See illustration.*
- 6g. — 124 Another, inscribed in blue CLARET 1650, *7¾in. high. See illustration.*



- 6 1/2 g. 125 A Lambeth bottle, inscribed "Boy" in blue, with four open handles for cord attachment, 8 1/2 in. high. See illustration.
- 29 g. H. D. 126 A Lambeth jug of globular form, painted in blue with portraits of William and Mary wearing their Crowns and Robes of State, inscribed W. M. R., 9 1/2 in. high. See illustration.
- 2 g. 3 127 A Lambeth puzzle jug, painted with a flower and foliage in yellow and blue, and with pierced neck, 6 1/4 in. high.
- 157 - Rostford 128 A plate of Bristol tin-enamel, painted with peonies, bamboo and rocks in the Chinese taste in blue, the reverse inscribed W. S. P. 1780, 9 1/4 in. diam.
- 6 g. - 129 A small plate of Lambeth-Delft, being one of a set inscribed in the centre "(3) Unto him that doth give 1740," the border with initials R. C. 1740, flower branches and fan shaped ornaments in blue on a ground of powdered manganese, 6 3/4 in. diam.
- 2 25 - 130 A Lambeth plate, painted with bands of zigzag ornaments in blue, and with initials H. R. B. 1728 in a medallion, 7 3/4 in. diam.
- 7 g. - 131 Another, the centre painted with figure of a cat holding a mouse, in blue, 10 1/4 in. diam. See illustration.
- 9 1/2 g. - 132 Another, similar.
- 4 g. 133 A Lambeth plate, with wide border, inscribed with initials in blue, I. E. P. 1687, contained in a cartouche formed as griffin caryatids, mask and scrolls surmounted by a coronet, 10 in. diam.
- 4 g. 134 Another, inscribed with the initials W. S. W. 1696 in a similar cartouche, 8 1/2 in. diam. See illustration.
- 4 g. 135 Another, inscribed with the initials T. A. P. 1700, in a similar cartouche, 9 in. diam. See illustration.
- 57 g. 136 A Lambeth tazza, the centre painted with two birds under a flower branch in blue, and with date 1669, the border with a band of other flower and foliage, on short stem and plain foot, 8 1/4 in. diam.
- 100 g. 137 THE MERRYMAN SERIES OF LAMBETH-DELFT PLATES, numbers 1, 2, 3 and 5, painted in yellow and brown, numbers 4 and 6 in blue, the cartouches formed as griffin caryatids, scrolls, masks and drapery, surmounted by coronets, octagonal 7 1/2 in. Similar to those illustrated in Burton's English Earthenware and Stoneware, and inscribed.

- 1 "What is a mery man.
- 2 Let him doe what hee kan
- 3 too entertaime his gelst.
- 4 with wyne and mery gests.
- 5 but if is wyfee dothe froune.
- 6 all meryment goos Downe."

Similar to a set exhibited at the British Museum.  
See illustration.

10g. Turner 138 A Lambeth basin, painted with a coat of arms in a cartouche composed of foliage scrolls, and with initials R. K. L. 1680, 16in. diam. See illustration.

7½g. 139 A LAMBETH LARGE CIRCULAR DISH, the centre painted with flowering branches, a vase of flowers and birds in the Chinese taste in blue, the deep border with other branches in compartments on a dark blue ground with foliage scrolls, the reverse painted with a fox and initials I. E. 1720, 21½in. diam.

8½g. Lawrence 140 ANOTHER, painted with a joust, surmounting a Tudor rose, in blue, the border with a linked design, 19¾in. diam. See illustration.

5g. - ? 141 ANOTHER, finely painted with the Adoration of the Magi in polychrome, 18½in. diam. See illustration.

6g. Turner 142 A LAMBETH OVAL DISH, in imitation of Palissy ware, the centre modelled and painted with Venus reclining, and with boys sporting, the border with masks and vases of flowers in relief divided by alternating sunk panels of circular and oval form, painted with Tudor roses and foliage in polychrome, 19¾in. wide.

9½g. - ? 143 A LAMBETH CIRCULAR DISH, the concave centre painted with the Emperor Alexander receiving tribute from Darius, in brilliant colours, the deep border with cupids, masks, griffins and arabesques of Cellini design on black ground, 20¾in. diam.

1½g. - ? 144 A Delft bowl, painted with baskets of flowers, foliage, and with vandyke border in the Imari taste, 12in. diam., and a circular dish, painted with flowers in the Chinese taste in blue, 13in. diam.

5g. Miller 144A Another, painted with cocks, emblems and baskets of flowers in the Chinese taste in polychrome, 12in. diam.



310g. Lerner

- 145 A LAMBETH CIRCULAR DISH, the centre painted in blue with an owl wearing a wig and cloak, sided by figures of a cat and monkey, the latter holding a hand glass, 15½ in. diam.

Inscribed:—

*"The Alomode . or . ye . Maidens . Mode . Admirid .  
& . Continue'd . By . ye . Ape . Owl . & . Mistris .  
Puss."* 1688

*"I heare ye clamors of ye Thoun  
Wherein they would run top knots down  
But yet alas, alas al in Vain  
For I this Mode will still Maintain"*

*"Top knots & night vailes I declaire  
For evermore I mean to ware  
This dress thers non ye can excell  
I see it doth be com Me well"*

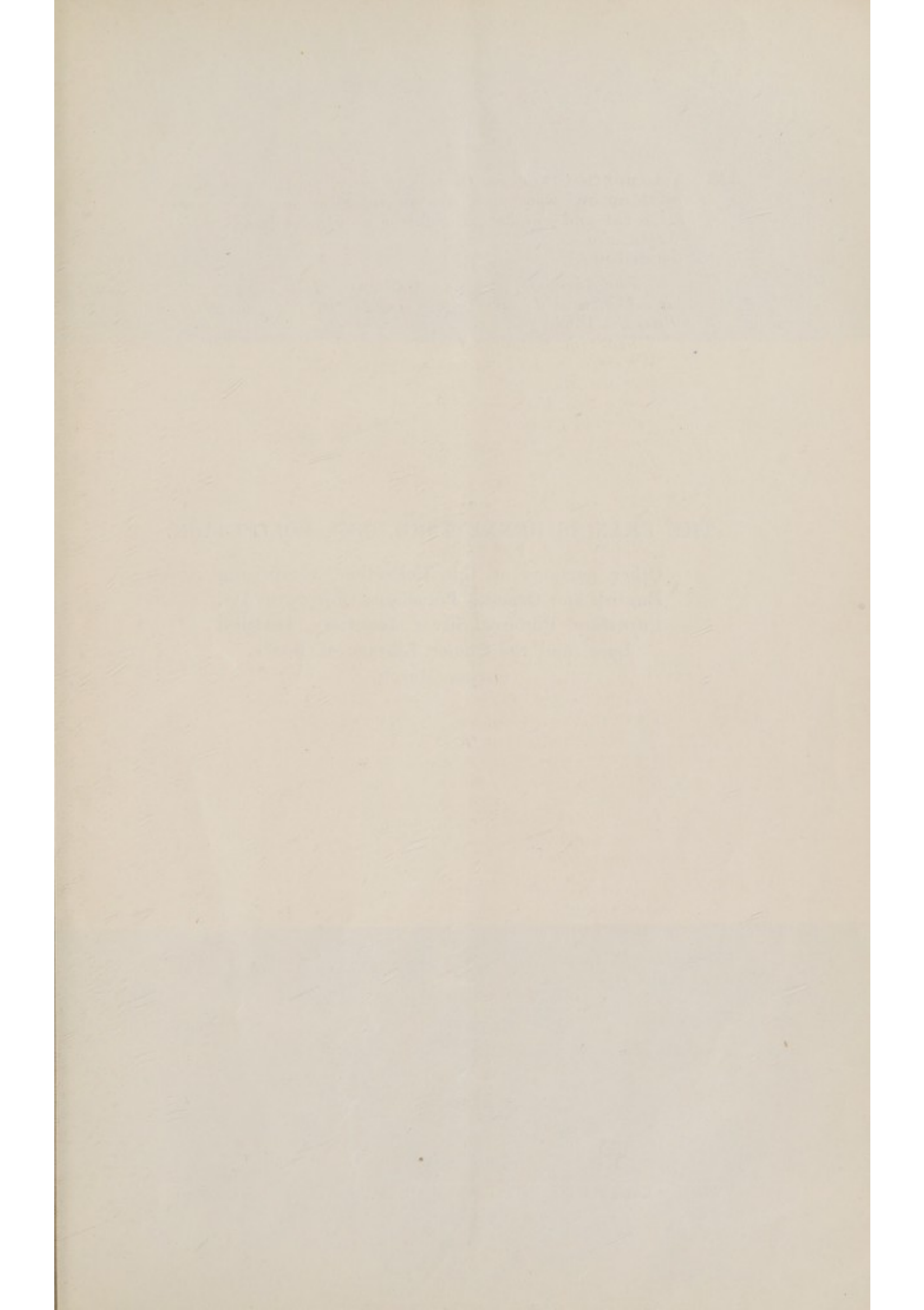
*"How, now you females of this age  
I would not have you In a Rage  
Although I doe present you heare  
With what you have esteemed deare  
Top knots & night Rails you adore  
But see by whom they now are wore"*

*"Ye Cat shee weares in perfect view  
A Cornet and a Top Knot too . . .  
Ye very owl that flyee by night  
In this your mode makes mouch delight  
Ye Reason this for In a storm  
This Rail will keep her shoulders warm"*

*"Ye very ape adores this Dress  
& Cryes It up, can he doe Less  
But females they first found this pride  
Pray tell me how can you Abide  
To weare this mode against Controul  
When used by ape, nay cat & owl"*

See illustration.

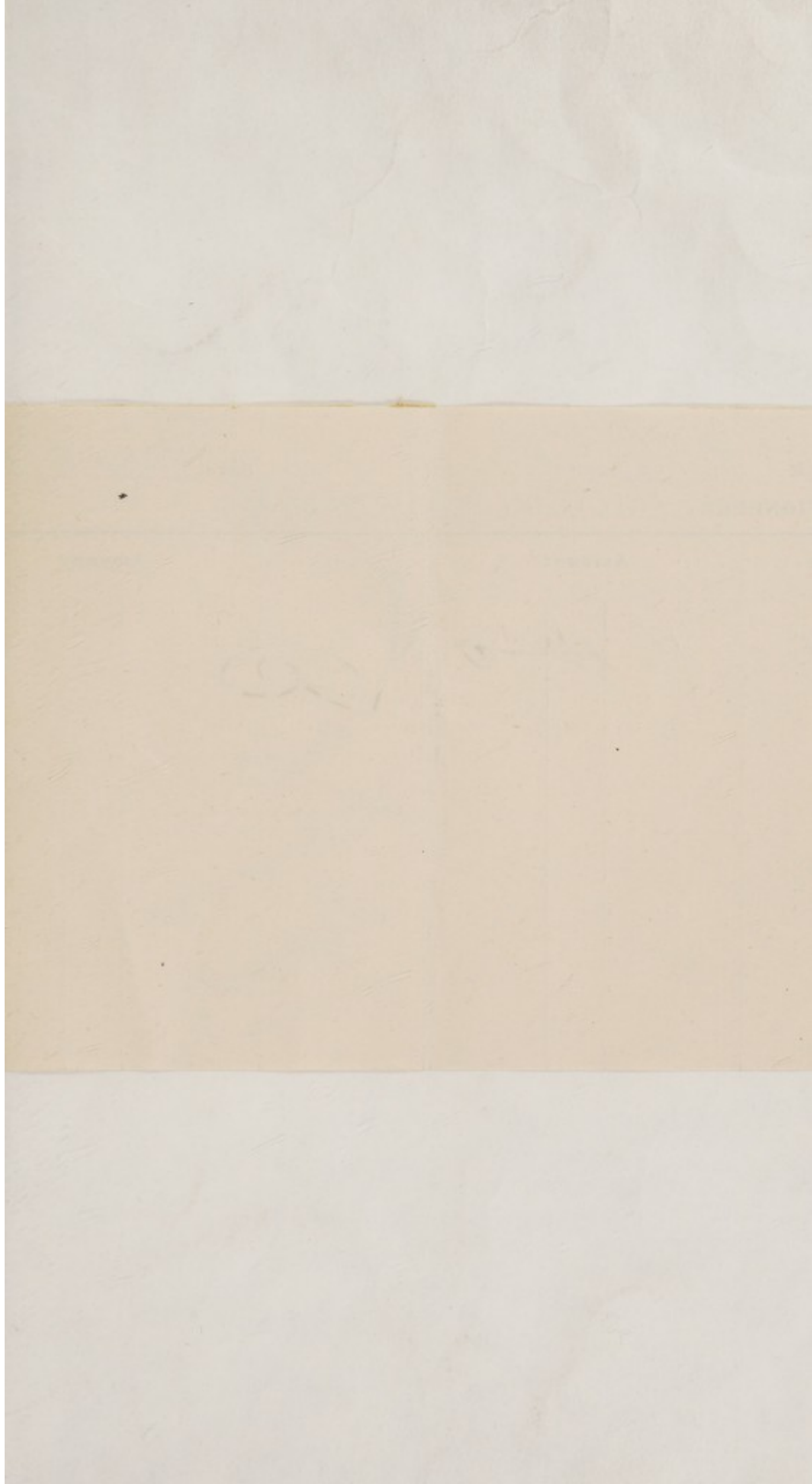
- 146 A PAIR OF SALT-GLAZE SEATED FIGURES OF DOGS, their collars inscribed I. H. M. P. M. 1724, 18¾ in. high.  
See illustration.





THE FRANCIS BENNETT-GOLDNEY COLLECTION.

Other portions of this Collection, comprising  
English and Oriental Porcelain, Objects of Art,  
Furniture, Pictures, Silver, Jewellery, Textiles,  
Lace, and the Choice Library of Books,  
during March.





BUYER

*J. W. Smeal*

Date

*Mar. 4/20.*

AUCTIONEERS

*Puttick & Simpson*

Lot	Amount			Lot	Amount		
	£	s.	d.		£	s.	d.
57.	1-	10	0	✓	<i>Paid £1-0-0 deposit.</i>		





