

## **Sales catalogue: Foster**

### **Publication/Creation**

8 May 1935

### **Persistent URL**

<https://wellcomecollection.org/works/xzz3g8c4>

### **License and attribution**

This work has been identified as being free of known restrictions under copyright law, including all related and neighbouring rights and is being made available under the Creative Commons, Public Domain Mark.

You can copy, modify, distribute and perform the work, even for commercial purposes, without asking permission.



Wellcome Collection  
183 Euston Road  
London NW1 2BE UK  
T +44 (0)20 7611 8722  
E [library@wellcomecollection.org](mailto:library@wellcomecollection.org)  
<https://wellcomecollection.org>

FOSTER

8th May 1935. Mr. Howard

WA/Hmm/CM/Sel 16/818

Telephone—WHITEHALL 6909

Telegraph—FOSTERDOM, LONDON

PALL MALL

A

Old Dutch

Mr

and Mat

OLD ENGLISH LA

ENGI

WHICH WI

MESSR

At the Galler

WEDNESDAY, MAY 8th, 1935

AT ONE O'CLOCK PRECISELY

May be viewed Tuesday prior.

Catalogues may be had of

MESSRS. FOSTER, 54, Pall Mall, S.W.1

KITCHEN & BARRATT LTD., London, N.W.10

WA/Hmm 63. £30-9-6

FOSTER	DATE	INITIALS
SALE	8.5.35.	HOWARD
PURCHASE		
CHECKED	13.5.35.	WJ
COLLECTED		
RECEIVED	5. VI. 35	HJ
ADMITTED		
PASSED	23 JUL 1935	and

## CONDITIONS OF SALE

---

FIRST.—The highest bidder to be the buyer; and if any dispute arise between two or more bidders, the lot in dispute shall be immediately put up again and re-sold, or not, as the auctioneer may decide, who is also to regulate the biddings and be the sole arbiter. The vendors reserve the right of bidding by themselves or agent, and of withdrawing any lot or lots.

SECOND.—The purchasers to give in their names and places of abode, and to pay down, *if required*, 5s. in the £, or more, in part of payment, or the whole of the purchase-money, in default of which the lot or lots so purchased to be immediately put up again and re-sold.

THIRD.—The lots are to be taken away and paid for, whether genuine and authentic or not, with all faults and errors of description, the day after the sale; MESSRS. FOSTER not being responsible for the correct description, genuineness or authenticity of any lot.

FOURTH.—To prevent inaccuracy in delivery and inconvenience in the settlement of the purchases no lot can be transferred, nor can any lot be removed during the time of sale; each buyer must pay for the whole of his purchases before any lot is removed.

FIFTH.—All lots uncleared within the time aforesaid may be re-sold by public or private sale, when or where the vendors think proper, without notice to the defaulter; and the deficiency (if any), and the expenses attending such re-sale, and any other loss the vendor may sustain, shall be made good by the defaulter, but this condition is without prejudice to the vendor enforcing the purchase, whether a deposit has been paid or not.

NOTE — *All lots remaining uncleared, by either Vendors or Purchasers, beyond three days from the day of sale will be subject to a charge of 2s. 6d. each per week for warehousing from the day of Sale.*



BUYER

AUCTIONEERS

*Forwards*

Date

*8/1/12*

Lot		Amount		Lot		Amount	

BUYER  
AUCTIONEERS

*Howard Foster*

Date *8/5/35*

Lot	Amount			Lot	Amount		
	£	s.	d.		£	s.	d.
10		9					
28	2	10					
29	1	10					
36	1						
36G	2						
36j	2						
36K	2						
524A	2						
524D	2	5					
524F	2	10					
524G	1						
194	5	15	6				
200	3						
233	2	10					
<hr/>							
<u>£ 30 9.6</u>							



# CATALOGUE

Wednesday, May 8th, 1935

AT ONE O'CLOCK PRECISELY

## ENGRAVINGS, ETC.

- 1 Seven modern etchings
- 2 Five—A pair—"Shoeing the Hack", and "The Stallion", coloured aquatints by Turner, and three others
- 3 Four—"Violante rode by Buckle", mezzotint, and three others
- 4 Fourteen—A pair—Views in the Crimea, in water-colours, by J. Adye, seven coloured prints, etc., and five miniatures *10/-*
- 5 Eight—Two facsimiles, after T. B. Hardy, and six others, various *3/- Synner.*
- 6 The S.S. Wilberforce, coloured, after J. Ward *2/- Davis*
- 7 A pair—The Fox Chase, coloured aquatints, by C. Hunt, after F. C. Turner *14/- Turner*
- 8 Two—The "Bentinck" off Aden, Duncan after Huggins, and H.M.S. "Rattler" and "Electo", coloured *26/- Davis*
- 9 Three—Mademoiselle Lundens, and two others, in colours *12/- ditto.*
- 10 Three portraits of Queen Victoria, coloured lithographs *9/- 75/-*
- 11 A large folio containing a parcel of miscellaneous engravings, etc. *7/- Myers.*
- 12 A parcel of historical engravings and portraits *10/-*
- 13 Lady Milner, W. Henderson after G. Romney, mezzotints (11) *5/- Davis*
- 14 Eleven—Sir H. Irving, Barlow after Millais (7), and Lord Aberdeen, Cousins after Lawrence (4), proofs
- 15 General Washington, proofs (17) *10/- Davis*
- 16 Figure Subjects, after T. Faed, and others, proofs (23)
- 17 The Waterloo Banquet, proofs (3), Peninsular and Waterloo Heroes (2), The Distinguished Men of Science, and six key plates *5/- Davis*
- 18 A folio containing a parcel of miscellaneous engravings, etc. *10/- Davis*
- 19 A similar lot *7/- Davis*
- 20 A similar lot *16/- Perry.*
- 21 A similar lot *16/- Myers*
- 22 A parcel of Houbraken portraits *10/- Myers*
- 23 A scrapbook of miscellaneous engravings, etc. *9/- Myers.*
- 24 A folio containing a parcel of miscellaneous engravings, etc. *7/- do.*
- 25 A similar lot *5/- Myers.*
- 26 Boydell's Shakespearian Figure Subjects. *3/- Myers* a parcel

- 27 A set of four—Naval Engagements, by Hulett, six others, various, *2/11 NS*  
and a frame
- (50/-) 4 (28) A pair—Views of Jerusalem, coloured
- (30/-) 65/- (29) Two—The Widow of an Eastern Chief, mezzotint, by J. R. Smith  
after Wright, and a water-colour sketch of an old North Midland  
Railway Engine
- 30 Three—A pair—Military Scenes, coloured lithographs, by W. Burgess, *30/- Davis*  
and one other
- 31 Three—An old View of Lyme Regis, coloured lithograph, and three *4/6*  
others, in two frames
- 32 Three—The Inundation of Pool Valley, Brighton 1850, and two *9/-*  
others, coloured
- 33 Four coloured Hunting Slips, in two frames, and one other
- 34 A set of four John Leech coloured cartoons *12/-*
- 35 A set of four coloured aquatints—Early Railway Rolling Stock *3/12/- Sabine*
- (20/-) 50/- (36) Two—An old scrapbook, and Batty's Rhine Scenery, 2 vols.
- 36B John Senex's Anatomy Plates, and Thornton's New Illustration  
of the Sexual System of Linnaeus *10/6 Perry*
- 36C Nineteen old Persian drawings *5/- Perry*
- 36D A scrapbook of water-colour drawings, etc., forty-three mezzo-  
tint portraits of Gentlemen, and a parcel of old coloured maps *9/- Perry*
- 36E Four—Salisbury Cathedral, and three others *1/- 5/-*
- 36F Three oleographs—Napoleon at Bassano, and two others *12/-*
- (2/-) 70/- (36G) Two albums of engravings and woodcuts of Native Figures and  
Customs of Africa, etc.
- 36H A folio of engravings and woodcuts, etc., of Native Figures and  
Customs *2/-*
- (2/-) 50/- (36J) Two albums of engravings of Native Figures of Africa, South Sea  
Islands, etc.
- (2/-) 60/- (36K) A folio of engravings of Native Figures and Customs of Africa, etc.
- 37 Twelve—Engravings, etc., a book, and two frames *10/- Myers*
- 38 Three—A pair—The Happy Father, and The Happy Cottagers,  
and Juvenile Navigators, coloured mezzotints *8/-*
- 39 Six Le Blond oval prints, stamped mounts *2/4/- Unit*
- 40 Eight—A small Rembrandt etching, five aquatints, and one other *7/-*
- 41 Ten engravings, etc., various *8/-*
- 42 Five—The Romps, coloured, after Bigg, and four others *9/- Cattle*
- 43 Two—Animal Affection, in colours, and a Baxter print *2/- Munro*
- 44 A View in the Society Islands, coloured aquatint, by and after Clevely *10/6 NS*



- 45 Views of Egypt and Palestine, *coloured lithographs, after D. Roberts* *5/- Cattle*  
*a parcel*
- 46 Views of Yorkshire (8), and Malmesbury Abbey (4), by F. Jukes
- 47 Joseph Sidney York, by V. Green, Lord Anson, by McArdel, and others (25) *8/- Mayer.*
- 48 Engravings after Stodart, Sherwin, Bartolozzi, etc. *a parcel*
- 49 "It might have been John", after Dendy Sadler, and other etchings *4/- Cattle*  
*a parcel*
- 49A The Cottager's Wife, *aquatint in colours, after Westall* *7/- Cattle*
- 49B Four—Oxford Sporting Scenes, by J. Ryman
- 50 Six—Native Scenes, *coloured* *5/- Oran.*
- 51 A painting of a Red Indian, *on leather* *6/- Roberts.*
- 52 A pair—Morning and Evening, by Ward after Morland, *stipples,* *18/-*  
*in colours*
- 53 A set of four—Coaching Scenes, *after Reville, coloured* *4/-*
- 54 Nine Views in France, *coloured* *9/- N.S.*
- 54A A scrapbook containing a quantity of prints relating to Native and Military Life, etc.
- 54B A similar scrapbook *passed*
- 54C Two coloured prints—Military Scenes
- 54D A coloured print of a New Zealand Native War Canoe Race, and one other *70/-*
- 54E Two coloured prints of scenes in the Zulu War, and one other print *21/- N.S.*
- 54F A coloured print of a Soudanese Marriage Dance, and two other coloured prints *10/- 75/-*
- 54G "Old England" 2 vols. *70/-*
- 54H "Attila", with jockey up, winner of the Derby, 1842, *lithograph*  
*in colours* *4/- Cattle*

## WATER-COLOUR DRAWINGS, Etc.

By or attributed to	LOT	Subject
F. E. JAMIESON . . . . .	55	A pair—Lake Scenes, <i>signed</i> <i>10/- Lucas.</i>
UNKNOWN . . . . .	56	Fifteen—Five—The Water Tower, Chester, four others, and ten unframed sketches
G. CLAUSEN, R.A. . . . .	57	A Farm Scene, <i>signed</i>
C. R. W. NEVINSON . . .	58	The Rue Valette
C. ROWBOTHAM . . . . .	59	An Italian Lake Scene, <i>signed and dated</i>
UNKNOWN . . . . .	60	Twelve—London Court Scenes, <i>in two frames</i>



<i>By or attributed to</i>	LOT	<i>Subject</i>
DUTCH SCHOOL . . . . .	61	A Banqueting Scene, <i>signed</i>
F. TUCKER, etc. . . . .	62	Five—A Landscape, and four others
H. EARP, SNR. . . . .	63	Three—Landscapes
C. H. WEIGALL, etc. . . .	64	Four—A pair—Landscapes, and two others
H. VILLIERS . . . . .	65	"Hebe"
B. FOSTER . . . . .	66	A Landscape
H. GRISET, etc. . . . .	67	Six—"Vive la France", and five others
T. M. RICHARDSON . . . .	68	The Castle of Chillon, <i>signed and dated</i>

*Lots 69 to 76 are the Property of a Gentleman*

A. BEARDSLEY . . . . .	69	A Figure Subject, <i>black and white</i>
A. J. OLLIVER, etc. . . . .	70	Two—A Lady and Horse in a landscape, and one other, <i>by H. Harding, 1825</i>
W. PAYNE, etc. . . . .	71	Three—Highclere Castle, <i>signed</i> , and two others
T. M. RICHARDSON, etc. . .	72	Two—Ben Lomond, and one other, <i>by J. M. Ince</i>
B. SICKERT . . . . .	73	A Nature Study
J. VARLEY . . . . .	74	Three—Landscapes
T. S. BOYES, etc. . . . .	74A	Three—A Continental Scene, and two others
PALMER, etc. . . . .	75	Three—A Distant View of Oxford, and two others
DE WINT, etc. . . . .	76	Four—Landscapes, etc.

*Other Property*

O. NORIE . . . . .	77	Queen's Westminster Volunteers
UNKNOWN . . . . .	78	Five—Napoleon, and other Italian Views, <i>en gouache</i>
UNKNOWN . . . . .	78A	Seven—Cattle in a landscape, <i>after Cuyp</i> , and six others
E. JONES . . . . .	79	Twelve—Sketches of Ships, Views in Ireland, etc.
C. N. PHILLPOTS . . . . .	80	The Baptistery of Santa Maria Novella—Florence, <i>signed</i>
METZA . . . . .	81	Two—Children fishing
DUTCH SCHOOL . . . . .	82	Two—Figure Subjects

## PICTURES, ETC.

<i>By or attributed to</i>	LOT	<i>Subject</i>
WITHERINGTON .....	84	A Landscape with figures
UNKNOWN .....	85	Flowers
UNKNOWN .....	86	A Figure Subject
WATSON .....	87	A Landscape with cattle
FRENCH SCHOOL .....	88	A Landscape
KORFF .....	89	A River Scene
M. W. LANGLOIS .....	90	A pair—"Sailing the Boat", and "The Young Fisherman", <i>signed</i>
G. MORLAND .....	91	A Landscape and figures, <i>panel</i>
J. D. KING .....	92	The Pass of Glencoe, <i>signed and dated 1840</i>
UNKNOWN .....	93	An Italian Landscape and figures
ENGLISH SCHOOL .....	93A	A Group of three children and dogs in a Landscape
ENGLISH SCHOOL .....	94	Four—A pair—Shooting, <i>panels</i> , and two others
UNKNOWN .....	95	Three—A Country Scene, <i>panel</i> , and two others
ENGLISH SCHOOL .....	96	A Coaching Scene by moonlight
ALKEN.....	97	A Coaching Scene, <i>panel</i>
A. SMYTH .....	98	A pair—London Bridge at night, <i>signed</i>
SIR F. GRANT, etc. ....	99	Two—A Portrait of the Artist, and one other
UNKNOWN .....	100	Four—Clipper Ships
REYNOLDS ( <i>after</i> ) .....	101	Angels' Heads
DUTCH SCHOOL .....	102	A Basket of Flowers, <i>panel</i>
G. H. LAPORTE.....	103	An Equestrian Portrait of Lord Cowley, <i>signed and dated 1820</i>
C. NAPIER .....	104	The Clipper Ship "John R. Worcester"
KNELL, etc. ....	105	Two—H.M.S. "Warrior" passing a wreck, <i>signed</i> , and the Brig Yacht "Mary"
ENGLISH SCHOOL .....	106	Three—Two—Hunting Scenes, and a Coursing Scene
UNKNOWN .....	107	Three—Mrs. Siddons in character, and two others
R. WILSON, etc. ....	108	Four—A Landscape and figures, and three others



<i>By or attributed to</i>	<i>LOT</i>	<i>Subject</i>
ENGLISH SCHOOL . . . . .	109	Four—Two—Hunting Scenes, and Two—Dogs
UNKNOWN . . . . .	110	A pair—The Old Mill, and a Landscape and figures
J. W. SMITH . . . . .	111	"The First Wages"
UNKNOWN . . . . .	112	A Coast Scene with figures and horses at a trough, <i>panel</i>
H. SPENCE . . . . .	113	A Landscape Sketch, <i>on panel</i>
H. SPEED . . . . .	114	Two—The Wetterhorn, and one other
A. MAUVE . . . . .	115	A Landscape
UNKNOWN . . . . .	116	Two—Flowers and a Sketch, <i>Constable</i>
UNKNOWN . . . . .	117	Two—A Street Scene, <i>ascribed to Whistler</i> , and a Landscape Sketch
G. ROYAL, etc. . . . .	118	Four—"Tide Bound", and three others
UNKNOWN . . . . .	119	Three—A Landscape and figures, <i>panel</i> , and two others
S. ROSA . . . . .	120	A Rocky Landscape
A. BARLAND, etc. . . . .	121	Two—A View in North Wales, and one other
O. T. CLARK . . . . .	122	A River Scene
J. HORLOR, etc. . . . .	123	Two—A Mountainous Landscape, and one other
UNKNOWN . . . . .	124	Two—A Portrait of a Rabbi, and a Landscape
H. GONEZ . . . . .	125	A pair—Landscapes with horses
UNKNOWN . . . . .	126	A View in the Highlands, with figures
SCOTT, etc. . . . .	127	Two—A River Scene with bridge and figures, and a View at Norwich
F. C. BUCKLEY . . . . .	128	Portrait of Queen Victoria in coronation robes
J. P. BEEDLES . . . . .	129	Two—Harbour Scene, and a Coast Scene, <i>E. Boudin</i>
A. A. GLENDENNING, etc. . . . .	130	Two—A Landscape and Cattle, and Eel Butts, <i>Maitland</i>
E. H. RIGG, etc. . . . .	131	Six—A pair—Landscapes, and four others
G. HODEL, etc. . . . .	132	Four—A Swiss Scene, <i>on panel</i> , and three others
NORWICH SCHOOL . . . . .	133	Three—Landscapes
GODET, etc. . . . .	134	Three—A Figure Subject, Flowers, <i>panel</i> , and one other
DUTCH SCHOOL . . . . .	135	Three—Still Life, and two others

<i>By or attributed to</i>	<i>LOT</i>	<i>Subject</i>
A. WARDLE, etc. ....	136	Two—A Figure Subject, and Portrait of a Lady in a black dress
C. KIRSHMAYER .....	137	A Venetian Flower girl, <i>panel</i>
HELY SMITH, R.B.A., etc. ....	138	Two—Figure Subjects
L. VERBOECKHOVEN ...	139	A Dutch Seascape
ENGLISH SCHOOL .....	140	Three—Landscapes, etc. <i>5/-</i>
UNKNOWN .....	141	Three—Oriental Subjects <i>15/-</i>
DUTCH SCHOOL .....	142	Tulips, etc.
H. MONTAGUE .....	143	A View in a Continental town <i>8/-</i>
DUTCH SCHOOL .....	144	The Mendicant <i>20/-</i>
FRENCH SCHOOL .....	145	The Distressed Lover, <i>pastel</i> <i>5/-</i>
VAN DYKE .....	146	A Portrait of a Lady <i>10/-</i>
GOETHA.....	147	An Italian Peasant <i>10/-</i>
A. CLAXTON .....	148	Three—Figures, etc. <i>20/-</i>
STOCKS .....	149	Figures in a Landscape <i>30/-</i> <i>Wille</i>
UNKNOWN .....	150	A Venetian Scene <i>2/-</i>
RUBENS ( <i>after</i> ) .....	151	A Figure Subject <i>2/-</i> <i>10/-</i>
J. NOEL .....	152	A Street Scene in Bruges <i>2/-</i> <i>Wille</i>
ENGLISH SCHOOL .....	153	A Landscape with cattle and figures <i>18/-</i>
P. DEAKIN .....	154	A View at Dorking, Surrey, <i>signed</i> <i>5/-</i>
A. FRASER .....	155	A Village Scene with a man in the stocks, <i>signed</i> <i>10/-</i>
UNKNOWN .....	156	A Landscape with figures <i>9/-</i>
ENGLISH SCHOOL .....	157	Two—A Marine View, and a Portrait of Canon Wilberforce <i>2/-</i> <i>Mend</i>
UNKNOWN .....	158	Three—Vessels at Sea, a Portrait of Hannah Eastland, and a Classical Landscape <i>10/-</i>
ENGLISH SCHOOL .....	159	A Portrait of a young Lady <i>8/-</i>
ENGLISH SCHOOL .....	160	A Scene in Cumberland <i>10/-</i>
FLEMISH SCHOOL .....	161	A Landscape with three leopards <i>28/-</i>
LAWRENCE .....	162	A Portrait of a Lady <i>4/-</i>
ENGLISH SCHOOL .....	163	Two—A Portrait of King, Manager of Bristol Theatre, and a Portrait of Oliver Goldsmith <i>3/-</i>
W. J. WITHERINGTON...	164	"The Swoon of Imogen", <i>exhibited at the Royal Academy, 1843</i> <i>12/-</i>
L. SERGEANT, etc. ....	165	Four—Bathing Tents, Carbis Bay, and three others <i>10/-</i>



<i>By or attributed to</i>	LOT	<i>Subject</i>
L. STARR.....	166	A Girl with basket of fruit, signed <i>5/-</i>
MAZINONI.....	167	An Italian Lake Scene, signed <i>15/-</i>
DUTCH SCHOOL.....	168	A Wooded Landscape, panel <i>10/-</i>
UNKNOWN.....	169	<del>Three</del> —A Wintry Landscape, panel, and <i>one two</i> others <i>10/-</i>
ITALIAN SCHOOL.....	170	The Descent from the Cross <i>12/-</i>
A. GRIMSHAW.....	171	"October Afterglow", signed and dated 1885 <i>20/-</i>
G. NATORP.....	172	Leda and the Swan <i>10/-</i>
UNKNOWN.....	173	The Bather <i>10/-</i>
UNKNOWN.....	174	A pair—Church Interiors, signed <i>10/-</i>
RUSSIAN SCHOOL.....	175	The Virgin and Child, panel <i>10/-</i>
SWEDISH SCHOOL.....	176	A Portrait of the Russian Empress, Anna Leopoldovna <i>10/-</i>
RUBENS.....	177	The Departure of Achilles <i>21/-</i>
HONTHORST.....	178	A Boy holding a torch, from the Earl of Pembroke's Collection <i>5 1/2 gu.</i>
UNKNOWN.....	179	A Portrait of Mme. Vigée le Brun <i>25/-</i>
RUBENS.....	179A	A Portrait of the Artist <i>25/-</i>
UNKNOWN.....	179B	Four—Two Portraits and two Academical Studies <i>3/- Pass.</i>
UNKNOWN.....	179C	Four—Figure Studies, etc.
FLEMISH SCHOOL.....	180	The Adoration, on copper <i>3/10/- do</i>
DUTCH SCHOOL.....	181	A Portrait of a Girl <i>10/-</i>
DUTCH SCHOOL.....	182	A Landscape with cattle and figures <i>10/- Pass</i>
REYNOLDS.....	183	A Child praying <i>10/-</i>
UNKNOWN.....	184	A pair—The Holy Family, and a Portrait <i>35/-</i>
UNKNOWN.....	185	Two—Heads <i>7/-</i>
VERNET, etc.....	186	Two—An Italian Landscape and figures, and a Battle Scene <i>5/-</i>
FRENCH SCHOOL.....	187	Two—Figure Subjects <i>NB.</i>
F. WEEKES, etc.....	188	Two—A Cavalier at a ford, and an Italian Lake Scene, panels <i>6/-</i>
JAN WYCK.....	189	Figures, horses and dogs in a Landscape <i>22/-</i>
UNKNOWN.....	190	An Eastern Port Scene with boats and numerous figures <i>20/-</i>
UNKNOWN.....	191	Fruit <i>25/-</i>
DUTCH SCHOOL.....	192	Two—Figure Subjects, panels <i>28/-</i>
UNKNOWN.....	193	A Figure Subject <i>28/-</i>
UNKNOWN.....	194	An Alchemist in his laboratory, panel, signed

*5 1/2 gu.*  
*6.*

<i>By or attributed to</i>	<i>LOT</i>	<i>Subject</i>
PANNINI .....	195	Roman Ruins with figures in the foreground <sup>3/3/-</sup>
R. WILSON .....	196	An Italian Landscape and river scene <sup>3/2/-</sup>
R. WILLOWBIGH .....	197	Horse and Groom, signed <sup>2/6/-</sup>
FRENCH SCHOOL .....	198	Fruit, Flowers and Peacock <sup>1/0/-</sup>
MIERIS .....	199	The Water Doctor <sup>5/10/- Harrison</sup>
NORWICH SCHOOL .....	199A	River Scene with man fishing <sup>1/0/-</sup>
UNKNOWN .....	199B	The Descent from the Cross <sup>1/1/5/-</sup>
DUTCH SCHOOL .....	199C	A Landscape with horsemen, panel <sup>3/5/-</sup>
HULK .....	199D	A pair—Marine Views <sup>1/0/6/-</sup>
NORWICH SCHOOL .....	199E	A pair—Landscapes <sup>2/2/-</sup>
R. SMIRK .....	199F	A scene from Romeo and Juliet <sup>1/1/-</sup>
DUTCH SCHOOL .....	200	The Alchemist in his Laboratory
ENGLISH SCHOOL .....	201	A Lake Scene with equestrian figures in the foreground <sup>2/5/-</sup>
DUTCH SCHOOL .....	202	A Vegetable Stall, panel <sup>1/0/-</sup>
BONINGTON .....	203	A Dutch Coast Scene <sup>1/5/-</sup>
UNKNOWN .....	204	A Man-o'-War and other vessels off the Coast <sup>2/1/0/-</sup>
ENGLISH SCHOOL .....	205	A Portrait of a Lady, oval <sup>1/0/- Barber</sup>
FLEMISH SCHOOL .....	206	A Woody Landscape <sup>1/0/-</sup>
POUSSIN .....	207	Children at play in a Landscape <sup>1/1/0/-</sup>
FRENCH SCHOOL .....	208	Lovers in a Landscape, oval <sup>1/0/-</sup>
WATTEAU .....	209	Figures in a Landscape <sup>2/-</sup>
DUJARDIN .....	210	A Dutch Cottage Interior <sup>6/- Cass</sup>
C. JONES .....	211	Three—Sheep Browsing, and two others
UNKNOWN .....	212	Four—Falstaff and three others <sup>6/-</sup>
UNKNOWN .....	213	Two—Interiors with figures <sup>1/0/-</sup>
H. KINASTON .....	214	A Landscape with figures <sup>1/2/6/- Normby</sup>
W. STONE .....	215	A Landscape with figures
UNKNOWN .....	216	A River Scene <sup>5/-</sup>
O. T. CLARK .....	217	A Landscape with figures <sup>24/- Hile</sup>
UNKNOWN .....	218	An old View of St. Paul's from the river <sup>1/0/0/-</sup>
J. WILSON .....	219	A pair—Coast Scenes with shipping <sup>2/2/-</sup>
UNKNOWN .....	220	Two—Coast Scenes <sup>1/8/-</sup>
NASMYTH .....	221	A Landscape <sup>3/0/- Hile</sup>
LANSINI .....	222	A Figure Subject <sup>2/-</sup>
HULK .....	223	A Dutch River Scene with boats, etc. <sup>3/5/- Hile</sup>
UNKNOWN .....	224	A Landscape and figures <sup>3/5/-</sup>



<i>By or attributed to</i>	<i>LOT</i>	<i>Subject</i>
KERN .....	225	A Figure Subject <i>2/57.</i>
COOKE .....	226	Two—River Scenes, boats, etc. <i>21/11/11</i>
UNKNOWN .....	227	A Figure Subject <i>2/57-</i>
BOUGH .....	228	A Landscape <i>21/11/11</i>
ENGLISH SCHOOL .....	230	A Portrait of a Lady <i>9/-</i>
DUTCH SCHOOL .....	231	A set of four—Landscapes, <i>panels 10/-</i>
UNKNOWN .....	232	A Portrait of a Man <i>9/-</i>
FLEMISH SCHOOL .....	233	The Procession of the Ark of the Covenant, <i>on copper</i>
UNKNOWN .....	234	The Virgin
M. PULLER.....	235	A Portrait of a Girl
UNKNOWN .....	236	Two—A Portrait of Shakespeare, <i>panel,</i> and one other Portrait
DUTCH SCHOOL .....	237	Figures at a well, <i>panel</i>
WILSON .....	238	A Landscape, <i>panel</i>
C. P. KNIGHT, etc. ....	239	Two—Dartmouth Harbour, <i>signed,</i> and a Battle Scene
UNKNOWN .....	240	A pair—Spanish-American Figure Sub- jects
UNKNOWN .....	241	Four—A Landscape with watermill, and three others
UNKNOWN .....	242	A Landscape
UNKNOWN .....	243	Five—A Coaching Scene, and four others
H. DUKE, etc.....	244	Two—A Spanish Girl, <i>after Murillo,</i> and one other
A. ELIAS, etc. ....	245	Five—Wallflowers, and four others
UNKNOWN .....	246	An Italian Landscape and figures
UNKNOWN .....	247	A Ravau Battle Scene
M. HUNT, etc.....	248	Three—A Harbour Scene, <i>signed and</i> <i>dated 1885,</i> and two others
MORLAND ( <i>after</i> ) .....	249	Two—The Corn Bin, and one other— Sheep
UNKNOWN .....	250	Two—Landscapes
UNKNOWN .....	251	A Portrait of Napoleon I
ENGLISH SCHOOL .....	252	Two—Two Children and Dog, and a Coast Scene, boats and figures
UNKNOWN .....	253	Five—A Vase of Chrysanthemums, and four others
UNKNOWN .....	254	A Figure Subject
ENGLISH SCHOOL .....	255	A Marine View with boats and figures
WILSON .....	256	A River Scene with figures

2/10/4

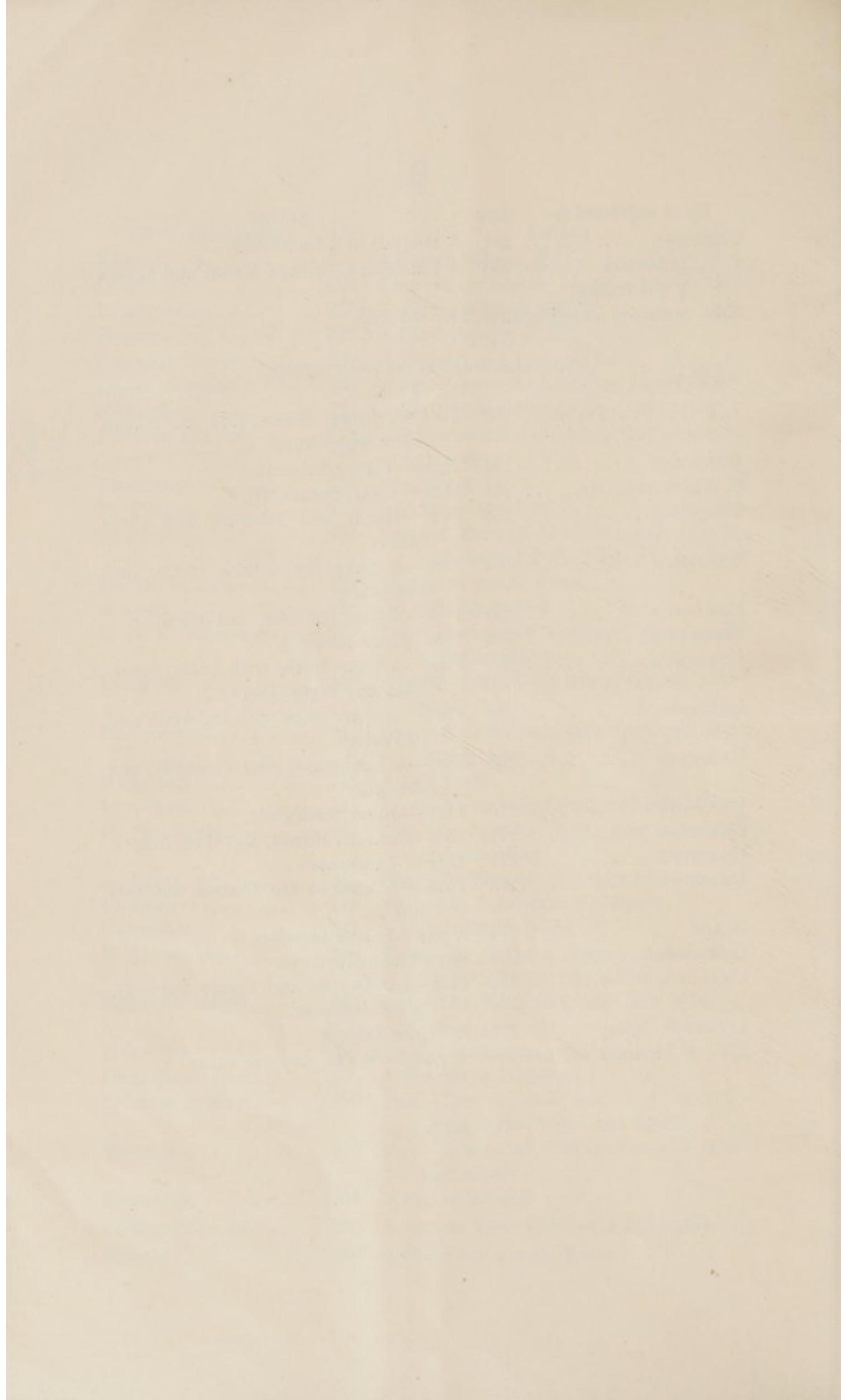
<i>By or attributed to</i>	LOT	<i>Subject</i>
UNKNOWN .....	257	A Portrait of a Gentleman
J. C. IBBETSON .....	258	A Landscape, cottage, horses and figures
259		A gilt frame
259A		A carved and gilt frame, 24in. by 20in.

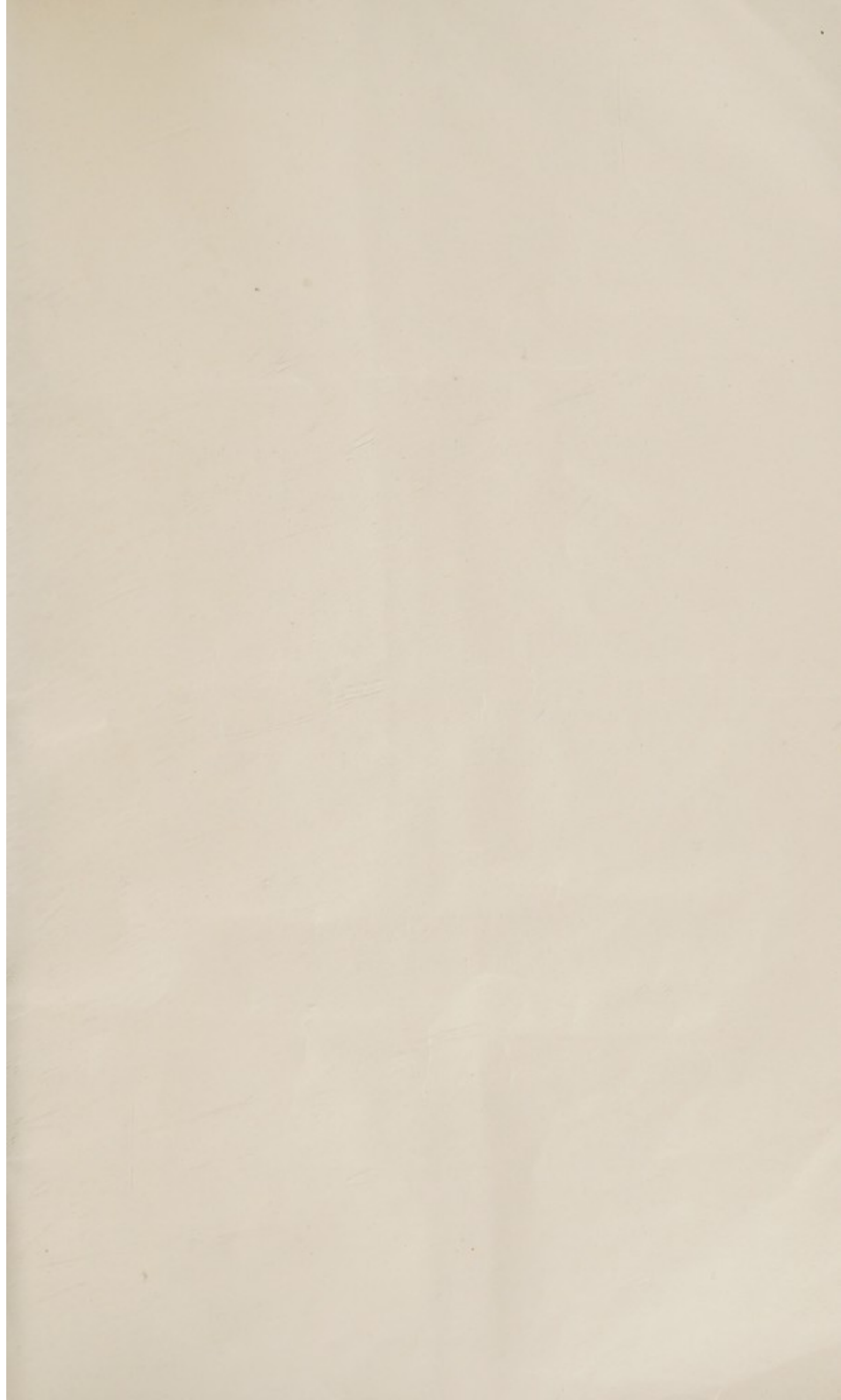
*The remaining lots are one Property*

J. F. DE FLEURY, etc. .	260	Two—A Street Scene, and an Italian View with church
UNKNOWN .....	261	Three—Figure Subjects
C. STANFIELD, etc. ....	262	Three—Coast Scenes, etc.
UNKNOWN .....	263	Four—Hagar and Ishmael, and three others
UNKNOWN .....	264	Two—A Lake Scene with cattle, and one other
UNKNOWN .....	265	Two—Milking the Cow, and one other
UNKNOWN .....	266	Two—Coast Scenes
UNKNOWN .....	267	Four—A Coast Scene with boats, fisher-folk, and three others
UNKNOWN .....	268	Three—A Landscape with waterfall, and two others
UNKNOWN .....	269	Two—A Landscape, <i>after Constable</i> , and one other
UNKNOWN .....	270	Three—River Scenes, etc.
UNKNOWN .....	271	Four—Arabian Horses, and three others
UNKNOWN .....	272	Three—Landscapes
UNKNOWN .....	273	Three—A View on the Thames, and two others
BLAKE .....	274	A pair—Larder Interiors
UNKNOWN .....	275	Swiss Landscapes, etc.
UNKNOWN .....	276	Five—Landscapes and Figure Subjects, <i>in water-colours</i>
LEIGHTON ( <i>after</i> ) .....	276A	A Figure Subject
277		A Japanese silk needlework panel—Storks, and one other

FINIS









Messrs. FOSTER

are pleased at any time to inspect and advise concerning the disposal of Works of Art free of charge in London and for a nominal fee in the country.

Insurance and Probate Valuations are undertaken at the Auctioneers' Institute scale charges, or an agreed fee. In the event of the property so valued being sold through the firm within twelve months, the charge will be remitted.



54 PALL MALL, S.W. 1  
Telephone: Whitehall 6909