

Sales catalogue: Foster

Publication/Creation

2 May 1935

Persistent URL

<https://wellcomecollection.org/works/agbwav6a>

License and attribution

This work has been identified as being free of known restrictions under copyright law, including all related and neighbouring rights and is being made available under the Creative Commons, Public Domain Mark.

You can copy, modify, distribute and perform the work, even for commercial purposes, without asking permission.



Wellcome Collection
183 Euston Road
London NW1 2BE UK
T +44 (0)20 7611 8722
E library@wellcomecollection.org
<https://wellcomecollection.org>

FOSTER . 2nd May 1935 in Stow

Original

WA/HMM/CM/82/6/817

Telephone : WHITEHALL 6909

Telegraph : FOSTERDOM, LONDON

PALL MALL

A CAT

Oriental, Continen

(C)

including : A SPODE DINNER SERVICE,
CESTER AND MINT

Georgian Silver, an

BRONZES, OLD PEWTER, IVORY CAR
CANDELABRA, HAVANNAH CIGARS, MIN

Decorative

including : A SEMI-GEARED PIANOLA P
A BOUDOIR GRAND PIANOFORTE by L
SATINWOOD BOOKCASES, HANGING CUPB

removed from 29 Broom Water, Teddington
Esq., removed from Lee Road, Blackheath,
the property of a Gentleman, a

WHICH WILL BE

MESSRS.

(Established 1810)

At the Galleries, 54, Pall Mall, S.W.1

On THURSDAY, 2nd MAY, 1935

AT ONE O'CLOCK PRECISELY

May be viewed Tuesday & Wednesday prior, and Catalogues had of
the Auctioneers, MESSRS. FOSTER, 54, Pall Mall, S.W.1.

Kitchen & Barratt Ltd., London, N.W.10

Wm in 63. £28.15.0
[WP] 19. 3.5.0
32.0.0

FOSTER	DATE	INITIALS
SALE	2.5.35	STOW
PURCHASE		
CHECKED	3.5.35	Wf
COLLECTED		28.2.36
RECEIVED	28.5.36	AS
ACKNOWLED		
PASSED		

CONDITIONS OF SALE

FIRST.—The highest bidder to be the buyer ; and if any dispute arise between two or more bidders, the lot in dispute shall be immediately put up again and re-sold, or not, as the auctioneer may decide, who is also to regulate the biddings and be the sole arbiter. The vendors reserve the right of bidding by themselves or agent, and of withdrawing any lot or lots.

SECOND.—The purchasers to give in their names and places of abode, and to pay down, *if required*, 5s. in the £, or more, in part of payment, or the whole of the purchase-money, in default of which the lot or lots so purchased to be immediately put up again and re-sold.

THIRD.—The lots are to be taken away and paid for, whether genuine and authentic or not, with all faults and errors of description, the day after the sale ; Messrs. FOSTER not being responsible for the correct description, genuineness, or authenticity of any lot.

FOURTH.—To prevent inaccuracy in delivery and inconvenience in the settlement of the purchases, no lot can be transferred, nor can any lot be removed during the time of sale. Each buyer must pay for the whole of his purchases before any lot is removed.

FIFTH.—All lots uncleared within the time aforesaid may be re-sold by public or private sale, when or where the vendors think proper, without notice to the defaulter ; and the deficiency (if any), and the expenses attending such re-sale, and any other loss the vendor may sustain, shall be made good by the defaulter, but this condition is without prejudice to the vendor enforcing the purchase, whether a deposit has been paid or not.

Note.—All lots remaining uncleared, by either Vendors or Purchasers, beyond three days from the day of sale will be subject to a charge of 2s. 6d. each per week for warehousing from the day of sale.

AUCTIONEERS
BUYER

BUYER

AUCTIONEERS

Date

2/3/35

Lot	Amount			Lot	Amount		
	£	s.	d.		£	s.	d.
83-	3	5	0				
188A	2	10	0				
188B	2	10	0				
188C	2						
188D	2	5	0				
188E	2						
188F	2						
188G	2	5	0				
188H	2	5	0				
215-	2	10	0				
276	2	5	0				
277	2	5	0				
278	2						
279	2						
2032							

CATALOGUE

Thursday, May 2nd, 1935

AT ONE O'CLOCK PRECISELY

BOOKS—SOLD NOT SUBJECT TO COLLATION

- 1 British Hunts and Huntsmen, *photographic plates, half crimson morocco gilt, folio* (3), and 5 others 8 vols.
- 2 The Smithsonian Institute (15), Annals of Spain, by *Stirling Maxwell* (4), and 2 others 21 vols.
- 3 The Autographic Mirror (2), Bolingbroke's Works (7), and 10 others 19 vols.
- 4 Fraser's Magazine (14), The Years Art (21), The Art Journal (4), and sundry magazines
- 5 Novels, etc. 35 vols.
- 6 The Waverley Novels, *Cadell*, 1844, *half red calf gilt, large octavo* 12 vols.
- 7 Dickens' Works, Blackwood, *coloured plates, octavo* 13 vols.
- 8 Smollett's Works, *half green calf gilt* (15), and Shakespeare, *calf gilt* (9) 24 vols.
- 9 The Comic History of England, by *A'Beckett*, *coloured plates*, 1864, Don Quixote, 1809 (2), Our Mutual Friend, by *Dickens*, 1865 (2), and The Innocents Abroad, by *Mark Twain* 6 vols.
- 10 London's Livery Companies Down Thames Street, and others vols.
- 11 Novels, etc. 50 vols.

MISCELLANIES

- 12 An enamelled clock face, decorated in cottage scenes, an agate marble box and cover, 7 other pieces, a china lamp receiver painted in cupids, gros-bleu and gilt, and 10 other pieces
- 13 Sundry blackwood stands, etc., in box
- 14 A black and gilt lacquered oblong stand, a lacquered screen stand, decorated in dragons, 2 blackwood double stands, and 12 other blackwood stands

- 15 A copper preserving bowl, 4 stewpans and covers, a mahogany folding writing desk, a mahogany footstool, on cabriole legs, and 4 other pieces
- 16 A clock in alabaster case, with gilt-metal boy surmount, a camera, sundry ivory chessmen, and a work box
- 17 Six cut-glass decanters, and 5 other pieces
- 18 A 13in. Japanese blue and white vase, decorated birds and flowers, another decorated in Lady, 10in. high, 2 others, and 7 other pieces of Oriental
- 19 *Coloured Glass.* Twelve wine glasses, a jug, 4 tumblers, a Chinese soapstone carving, a pair of Staffordshire ware jars and covers, a pot, and 8 other pieces
- 20 A blue and white circular salad bowl, a Delft blue and white jug, 2 cream ware baskets, and a pair of Coalport jardinières, purple, red and gilt
- 21 Part of a Staffordshire ware dessert service, purple, red and gilt, 7 pieces, a 5in. Worcester vase, decorated red and gilt, 2 Worcester spill vases, decorated flowers, blue and gilt, and 13 other pieces
- 22 A Singer sewing machine
- 23 A lacquered metal oblong tea tray, painted in Persian figure subject, 26in. wide
- 24 A Chinese carved and gilt lacquered wood figure of Kwan Yin, 31in. high
- 25 A pair of 18in. Japanese long-neck pear-shape bottles, enamelled in panels of Immortals and Mortals, coral red ground
- 26 A Chinese porcelain figure of Kwan Yin and Child, fitted for electric light, and a turquoise blue vase, with dragons in relief and pierced, glass liner, 12in. high
- 27 A Japanese ivory vase, overlaid with flowers, etc., in mother-o'-pearl, silver and enamelled mounts, and phoenix handles and cover, 6in. high
- 28 A nest of 7 horn beakers, silver mounted
- 29 A pair of Canton enamel peach form sweetmeat trays, a double porcelain box, painted in flowers and gilt, a 5½in. Oriental "famille rose" vase, and 4 other pieces
- 30 *Oriental.* A turquoise blue and mottled bulbous vase, 12½in. high, a stoneware figure of a kylin on drum, 10½in. high, and a circular mirror in red and gilt lacquered frame, on stand
- 31 An Italian alabaster model of a Rotunda, a German pottery vase, and a 2-handle drinking cup

- 32 A modern Worcester dessert service, painted in various flowers, pink and gilt borders, *comprising* :—12 and 4 tazza dishes
- 33 A 9in. Cloisonné enamel bulbous bottle, another, smaller, and another pair, 5in. *high*
- 34 A pair of Cloisonné enamel vases, decorated in storks, chrysanthemums, etc., light blue ground, 36in. *high*, carved blackwood stands
- 35 A barograph, in mahogany glazed case
- 36 A clock with enamelled numerals, in bronzed Rising Sun case, supported by bronzed figure of Neptune on sea horse, and circular base, 26in. *high*
- 37 A Chinese blackwood jardiniere stand, carved and pierced, on cabriole legs, top inset with marble plaque
- 38 A plaster coloured relievo plaque, a Swiss Mountain Scene, with figures and cattle, framed
- 39 *Oriental*. A Celadon vase, 6in. *high*, a blanc-de-chine beaker vase, and a mottled vase, 6in. *high*
- 40 A salmon pink satin table runner with frilled edge, 10ft. 8in. *long*, 24in. *deep*, and another, embroidered in gilt thread on white satin, 9ft. 4in. *long*, 1ft. 10in. *deep*
- 41 An ivory paper knife with silver fluted handle, 2 Staffordshire figures, and a papier maché snuffbox
- 42 A set of turned ivory chessmen, a lace fan on mother-o'-pearl sticks, and a fan decorated in figures, on mother-o'-pearl sticks
- 43 *White Lace*. Four stoles, 2 fichus, a veil, a collar, and 7 other pieces
- 44 *Black Lace*. Four stoles, 2 fichus, and 9 other pieces
- 45 *White Lace*. Six handkerchiefs, and sundry trimmings, etc.
- 46 A Bristol green glass cornucopia vase, a blue glass jug, and a terra cotta coffee pot
- 47 A pair of coloured composition candlesticks, on fox stems, a Salopian blue and white gravy boat, a Worcester blue and white bowl, and 7 other pieces
- 48 A green jade casket, silver mounts, and a Chinese painting—Peacock, rocks and fruits, etc., 18½in. *square*
- 49 A pair of Oriental vases, with galloping horses on a ground of green waves, 14in. *high*
- 50 A Chinese figure, Kwan Yin, 10in. *high*, and another of a Lohan, 7in. *high*
- 51 A pair of 12in. Chinese ho-ho birds, with turquoise glaze, and a small pair of cocks, with egg-and-spinach decoration

- 52 An ivory triptych, figures in relief, performing Shakespeare's "Hamlet", 12in. high
- 53 An ivory tankard and cover, carved with belt of figures in high relief, silver mounted
- 54 A Persian miniature painting—Garden Scene with youth, and another 2, in 1 frame—Mountainous Scenes with figures
- 55 Another 4—Garden Scenes and figures, in 2 frames
- 56 A papier maché circular snuffbox, the lid painted in girls and cupids
- 57 Two glass pictures—Lady Elizabeth Cromwell, and Miss Greenway
- 58 A silver-mounted leather blotter, a papeterie case decorated in views, a black and red lacquer carved circular box, and 8 other pieces
- 59 A Spanish brass lamp, on circular base
- 60 An old English woolwork chair-back, a settee seat, and 2 beadwork and needlework banner screens
- 61 A pair of Gera triple shell-shape sweetmeat dishes with shell in relief and decorated in blue, *marked G in blue*
- 62 A carved ivory bust of a Russian General, on wood plinth, 9½in. high
- 63 A pair of china bulbous jugs, decorated in panels of exotic birds, powder-blue and gilt, *in the Chelsea taste*
- 64 Three dress studs, and 4 tiepins
- 65 A Rhodian pottery circular dish, decorated in flowers, green, red and blue, 11½in. diam.
- 66 A pair of Satsuma vases, decorated in figures
- 67 A 2ft. 6in. altar candlestick, on tripod base with 3 claw feet, embossed with biblical characters, with reeded and fluted columns and shaped silk shade for same
- 68 A flowered brocade table cover, fringed
- 69 A set of 11 Dresden china cups and 9 saucers, painted in various fruits and flowers, basket pattern borders
- 70 A pair of Belgian bronze jardinières, on 4 legs, chased with foliage in relief, *signed Soodts*, 16in. high
- 71 A silver cigarette box, 7¼in. wide *all at*
- 72 A Sèvres porcelain vase, painted in flowers and festoons and ribbon ornament, on a dotted ground and gilt, 9in. high
- 73 An old English china dessert service, painted in fruits, on a turquoise blue ground, *comprising* :—12 plates and 5 tazza dishes

- 74 A French clock in ormolu case, with porcelain dial and inset with painted china plaques and surmounted by figure of a girl, 14in. wide, 13½in. high, glass shade and stand
- 75 A Wedgwood green ware dessert service, *comprising*:—26 plates, 2 oblong centre tazza dishes, and 10 side dishes, and 4 other green ware dessert dishes
- 76 Five cream ware oval baskets, decorated in blue and 7 stands, 7 pieces of Staffordshire dinner ware, painted in flowers and foliage, and a French faience oblong dish, decorated in blue
- 77 A set of 4 old English cut-glass decanters and stoppers, and a claret jug and stopper
- 78 A set of 3 old English cut-glass long-neck decanters and stoppers, a cut-glass claret jug, and a spirit decanter and stopper
- 78A A set of 6 double-lip cut-glass finger bowls
- 79 A Foley china Coronation (1902) tea and coffee service, decorated with armorial bearings (Edward VII and Alexandra), 58 *pieces*
- 80 A Japanese yellow satin bedspread, embroidered in storks, chrysanthemums and other flowers, a cream satin embroidered cushion cover, and another, embroidered in dragons on yellow satin
- 81 A violin and bow, in case
- 82 Six old English cut-glass tumblers
- 83 A pair of Bristol china ewer vases encrusted with flowers in gilt panels, 12in. high
- 84 A 12in. Oriental ginger jar and cover, enamelled in chrysanthemums and other flowers, in colours, wood stand
- 85 A set of 4 plated pillar candlesticks, another pair, on oval bases, and a breakfast dish with revolving cover
- 86 A child's toy dinner service, painted in flowers and gilt, 34 *pieces*
- 87 An old English Apothecary's scales and weights in mahogany case, and a set of early dental instruments, in case
- 88 A pair of old English duelling pistols in mahogany case
- 89 A Minton china dessert service, painted in lake and other views, pink border and gilt, *comprising*:—18 plates, and 5 tazza dishes
- 90 A porcelain trinket box with glass lid, another, octagonal shaped, a French green enamel patchbox, a tortoiseshell purse, a Berlin china pot pourri bowl and cover, and 8 glass bangles

- 91 A pair of 12in. gilt bronze candlesticks, on Therm figure supports and onyx bases, another pair on Cupid stems and onyx bases, 10½in. high, and an ormolu 4-light candelabrum, supported by bronze figure of a Boy, 18½in. high
- 92 *Bronzes.* A seated figure of a girl reading, another of a Youth, a group of deer, *by Baryè*, and 3 other pieces
- 93 A gentleman's wrist watch, in gilt case
- 94 An old English papier maché circular snuffbox, the lid painted in London Thames view, with bridge and figures
- 95 An old English blue and white dish, a Delft dish, a carved oak hanging box, and a paper rack
- 96 An old English copper bed warmer with wood handle, and a mahogany pail, brass banded and swing handle
- 97 An old English pierced brass trivet, a gun-metal mortar and pestle, an old Sheffield taperstick, a brass chamber candlestick, and 3 other pieces
- 98 A carved coco-nut box with lid, silver mounts and feet, a pewter quart measure, a tankard, a cream jug, and a ladle
- 99 A brass companion set, with 5 fire implements, on pillar and claw, and eagle surmount
- 100 Seven pieces of Spanish gilt leather
- 101 An Italian statuary marble head of an emperor, 6in. high, on ebonised stand, and a Greek marble fragment carved with 2 heads, on stand
- 102 Two illuminations, on parchment, and 2 miniatures—Saints, *ovals*
- 103 A portion of a Toledo lustred tile, 2 Persian tiles, blue decoration, and a frame of tiles
- 104 A timepiece in ormolu case, supported by figure of a bull on scroll base, and a brass powder flask
- 105 A Nymphenburg chocolate pot and cover, painted in sprigs of flowers, 2 Sèvres cups and saucers, and a Dresden china group—Youth and Girl
- 106 A pair of Japanese Kaga bowls, a Rhodian tile, and 3 other pieces
- 107 *Staffordshire Blue and White.* Two dishes, and 9 large and 8 small plates, *all alike*
- 108 A cut-glass spirit decanter, silver mount, a diamond cut decanter and stopper, and 5 others
- 109 A pair of opal gilt and painted lustre vases with prismatic drops, 12in. high

- 110 A Tonbridge work box, 2 old English samplers, a linen lace insertion panel, 2 silver thimbles, in case, a gem-set ring, and a brooch
- 111 Part of a Staffordshire blue and white tea service, 17 *pieces*, 3 chromolithographs, 2 drawings, and a brass box with turquoise panels
- 112 An Indian jade necklet, sundry beads, one other, and sundries
- 113 A Sèvres vase, painted in hunting scene and female head handles, a Ware rustic vase with figure of a marksman, and 11 other pieces
- 114 A Copeland ware toy dinner service, decorated in blue, 27 *pieces*
- 115 A Napoleonic prisoner of war bone set of dominoes, in case, a cribbage marker, a small silver box, an onyx oblong box, gilt mounts, and 1 other
- 116 An Italian majolica dish, decorated with sailing vessel and border of foliage in blue, 12in. *diam.*, an old porcelain figure of an owl, brown glazed, 4in. *high*, and 3 other pieces
- 117 A Spode vase, painted in roses, 5in. *high*, a pair of Davenport blue and white leaf-shape dishes, a Staffordshire figure, and 4 other pieces
- 118 A Grecian pottery amphora, decorated black and red, 25in. *high*, on iron stand
- 119 A French clock, in carved and gilt scroll case
- 120 An Italian carved and painted wood group—St. Jerome in Grotto, 18in. *by* 14in.
- 121 Two old English needlework pictures—Children in Landscapes
- 122 Two Persian glass paintings of ladies, mirror panel borders, in lacquered frames
- 123 A pair of carved wood moulds—Figure Subjects, and a pair of cut-glass lustre candlesticks, on circular bases
- 124 A Chinese soapstone figure with monkey features and rock background and base, 12in. *high*
- 125 An old English pear-wood stool, the support carved in figures of old men and masks, slate top, 15½in. *high*
- 126 A Chinese bronze gong with figures of Bodhavista and vases in high relief, part gilt, 20½in. *diam.*
- 127 *Oriental.* A 10in. eggshell cylindrical vase, enamelled in figures, a 4in. Imari bowl, and a 9in. dwarf figure of old man, decorated in colours

- 128 A Copeland plate, perforated border and painted in views, 2 old English straw-work panels—Bacchante Figure, and a Miniature of a Girl, *water-colours*
- 129 A Continental china figure of a seated monkey in female costume holding a scroll-shape bowl, *5½ in. high*
- 130 A Crown Derby mark cup, a Coalport miniature long-neck bottle, painted in flowers, blue and gilt, and 4 china cups
- 131 A Marconiphone wireless set with 8 valves, aerial, batteries, etc.
- 132 A pair of cut-glass decanters, 4 others, 10 stoppers, and 5 other pieces
- 133 *Oriental.* Four tea bowls and 2 saucers, enamelled in figures, another pair, a teapot and cover, gilt decoration, a set of 5 dishes, and 10 other pieces
- 134 An Italian bronze chariot with charioteer, on marble base, *13 in. wide*, and an electro copy of a Roman bas relief, *framed*
- 135 A Japanese bronze jardiniere, chased in birds and flowers, an old Worcester cup and saucer, a cream jug, transfer decoration, and 3 other pieces
- 136 Six old Staffordshire lustred cups and saucers and a bowl, a glass floral paperweight, and 5 other pieces
- 137 A Georgian silk shawl
- 138 A Japanese damascened card case, a porcelain bon-bon box, a plated tankard, 4 cups and other pieces
- 139 A pair of 11 in. majolica bulbous vases, decorated in arabesques, 3 Delft blue and white vases, and 2 other pieces
- 140 A French china jar and cover, decorated flowers and trellis pattern, a pair of blue basalt beaker vases, camei decoration, a Jacob Petit cup and saucer, and 5 other pieces
- 141 A small collection of old glass
- 142 Two old coloured and cut-glass lamp stands
- 143 Four Japanese porcelain cups, covers and stands, a Canton china cylinder, a set of 4 Staffordshire blue and white plates, and 6 other pieces
- 144 *Oriental.* A set of 6 plates, blue and white, another set of 5, a 10 in. vase, decorated in river scenes in blue and gilt, and an enamelled teapot
- 145 A pair of Chinese old gold satin upright panels, embroidered in phoenix birds, flowers and bamboo plants, *8 ft. 8 in. by 3 ft.*

- 146 A pair of cut-glass thistle-shape vases with diamond-cut belts, on circular bases, *8in. high*
- 147 Two old English mahogany tea caddies, another, rosewood, and 2 work boxes
- 148 A Moustiers faience jug, decorated in flowers, a Staffordshire copper lustre jug, and another, smaller
- 149 A miniature—Portrait of Napoleon, ormolu-mounted frame
- 150 A Chinese yellow satin table cover, embroidered in flowers and foliage in coloured silks, fringed, *6ft. square*
- 151 Another, *6ft. square*
- 152 An Oriental Celadon dessert service, enamelled in birds, flowers and foliage, *comprising* :—18 plates, 4 dishes and a tazza dish
- 153 An old English automatic figure metal money box, an old English masonic jug, and a Dresden pear-shape vase, decorated red and gilt, *11in. high*
- 154 A satinwood tea caddy with cut-glass sugar bowl, a cream enamelled box, and a shuttle-shape box
- 155 A pair of Bohemian lustre vases with prismatic drops
- 156 A niello silver snuffbox, decorated with buildings on lid
- 158 A silver communion set of cup, paten and flask, in case
- 159 Four gilt fob seals, and a pair of silver-mounted spectacles
- 160 An old English mirror in mahogany frame, with scroll surmount, carved with bird and gilt, *23in. by 18½in.*
- 161 A Newhall ewer and basin, decorated in Chinese figures, diapers and scrolls
- 162 Eighteen ruby wine glasses in 3 sizes
- 163 Twelve cocktail glasses, 12 green tumblers, engraved, and 12 wine glasses
- 164 Eighteen blue and white china miniature beakers and vases, a pair of blue and white crackle vases and covers, an Oriental basket enamelled in figures, and 9 other pieces
- 165 *Cut Glass.* A set of 4 candlesticks, a pair of jars and covers, and a pair of cream jugs
- 166 A china 3-light candelabrum with figure of a girl, a pair of china figures—Fisherfolk, and a china candlestick, floral stem
- 167 A pair of Colebrookdale pear-shape bottles and stoppers, encrusted in flowers, *16in. high*
- 168 A French clock in Jacob Petit porcelain case, surmounted by seated female figure, on oblong base encrusted in festoon of flowers and gilt, *17in. high*

- 169 A set of 3 old English jugs painted in colours, in sizes, a Canton china tray, gilt-metal mounts, a china jardiniere, 4in. high, and a 7½in. amber glass beaker vase
- 170 A backgammon board, an oak papeterie case, metal mounts, and a Japanese red lacquered cabinet, 7¼in. wide
- 171 A pair of Empire carved and gilt wall lights with 3 branches and surmounted by eagles, fitted for electric light, 26in. high
- 172 Two old English samplers
- 173 A pair of Empire ormolu candelabra with branches for 5 lights, on bronze winged female figure supports and square-shape marble plinths, 36in. high
- 174 An Empire clock in marble case with bronze standing figures of Cupid and Psyche at sides, on marble oblong base with ormolu frieze chased with figure subjects and mounts, 2ft. 9in. high, 1ft. 9in. wide
- 176 A Carolean horn oval box, the cover with relieve bust of Charles I
- 177 An old English mahogany folding writing desk, a straw-work work box, and a leather box with sundries
- 178 Plated. A double fruit tray, repoussé, a tazza bowl, repoussé, and 5 other pieces *37 meller*
- 179 A Tibetan brass bowl, embossed, a pewter tankard, a pepper pot, a Dutch lacquered urn, and 7 other pieces *452*
- 180 A set of Chinese carved ivory chessmen, in box *380*
- 181 A set of 12 cut-glass tumblers, and another set of 12 smaller, similar *452*
- 182 A pair of cut-glass tapersticks, on baluster columns and shaped circular bases *382*
- 183 A set of 12 cut-glass finger bowls *422-*
- 184 A cut-glass liqueur set, 9 pieces, and another, painted in roses, 8 pieces *380*
- 185 A pair of green cut-glass beaker-shape vases, 10in. high *252*
- 186 Three pairs of china figures, and a pair of china groups *402*
- 187 A pair of bottle-green decanters and stoppers, and a puce sugar basin and cream ewer *280*
- 188 A pair of cut-glass decanters and stoppers *482*
- (501) 702 (188A) Two albums of engravings of Native Figures and Customs of Africa, etc.
- (501) 702 (188B) Another two, relating to South Sea Islands, America, etc.
- (401) 4 (188C) A folio of lithographs and engravings of Native Figures and Customs of Africa, etc.

(457) 75/- (188D) Two albums of engravings of Native Figures of Africa, America, etc.

(407) 4/- (188E) Another two, relating to South Sea Islands, Africa, etc.

(407) 52/- (188F) A folio of engravings of Native Figures and Tortures of China, Africa, etc.

(457) 75/- (188G) Two albums of prints relating to Native Tribes of America, and Eastern Countries

(457) 70/- (188H) A folio of engravings relating to Africa, etc.

189 An Italian bronze equestrian group, on oblong marble plinth of architectural design with 6 pilasters, and bronze applied frieze and mounts, 2ft. 4in. high 480

190 A yellow brocade skirt, a black cloth jacket, embroidered in gilt thread, and an Indian silk tapestry jacket 25/-

191 Four alto relievo oval metal plaques—Battle Scene, The Crucifixion, etc., framed 40/-

192 Two stuffed exotic birds, glass shades and stands 15/-

193 A quantity of agate, lacquered and other beads and sundries, in box 25/-

194 A pair of china long-neck bulbous-shape vases, decorated in panels of flowers, 13in. high Richardson

195 A collection of old pewter 380

196 A Persian steel helmet, shield, and 4 other pieces 280 N.S.

197 A Sheffield plated vase-shape coffee pot on feet 48/-

198 A hobnail cut-glass salad bowl and a pair of servers, a jug, and 2 goblets, plated rims 380 Jacobs

199 An Empire mirror plateau

200 A decorated vase-shape coal scuttle on claw feet

201 A set of 4 old Flemish pewter plates, engraved in figures, 8in. diam. 35/- Raven

202 A set of 5 old pewter plates, 9in. diam. 50/- do

203 A pair of Dresden china candelabra with branches for 6 lights, on baluster columns and seated figures at base, and encrusted in flowers, 26in. high

204 A set of 6 Japanese Imari carp dishes, purple, red and gilt

205 A pair of Oriental tea bowls and saucers, a Chelsea arbour figure of a ram, 4 Staffordshire figures of sheep, and 3 other pieces

206 An ormolu fender, chased in scrolls and seated figures of children at ends, 4ft. wide, and a pair of fire dogs, chased with scrolls, torso with helmet, and animals, 14in. high, en suite

- 207 A walnut dressing case with Sheffield plated cut-glass fittings, an oak tantalus stand, and 2 brass water cans *53/- Desk*
- 208 Thirty-three Ware dinner and soup plates, decorated in flowers and borders in blue and gilt, and a set of 10 Ware dessert plates, decorated in strawberries *38/-*
- 209 Three Spode oblong meat dishes, decorated in the Chinese manner, *all alike* *25/-*
- 210 *Oriental.* A blue and white beaker vase, 18in. high, a Kaga saucer dish, decorated in river scene and girls, 13in. diam., a pair of octagonal plates, decorated in armorial bearings, and 7 others, various *35/-*
- 211 A china coffee service, Chinese decoration, 14 pieces, 3 Japanese bowls, covers and stands, and 6 other pieces *53/-*
- 212 A china tea service, pink borders and gilt, 31 pieces *38/- Pickard*
- 213 A pair of painted wood candlesticks, fitted for electric light, an amber cut-glass pillar candlestick, 2 tile stands, and 6 other pieces *48/-*
- 214 A plated cruet stand, a circular entrée dish and liner, 5 pairs of plated dessert knives and forks, a pair of opera glasses, in case, and 13 other pieces *32/-*
- (50/-) 4* (215) Woolmer's original cast for the bust of Tennyson, now at Trinity, Cambridge, 30in. high
- 216 Ten Oriental blue and white plates, a saucer dish, and an oblong dish *35/-*
- 217 A Sunderland copper lustre jug, decorated in sailing vessel, the Mason's Arms and rhyme, 9in. high *24/- Mitchell*
- 218 A Chinese porcelain circular dish, enamelled in trellis, flowers, etc., 17½in. diam.
- 219 A silver chain bag, a silver-mounted manicure set, in case, and 2 other pieces
- 220 A silver-mounted box, repoussé in scrolls, 6 silver ashtrays, a pair of candlesticks, and a circular mirror
- 221 Three pairs of Cloisonné enamel vases, and an old English flint-lock pistol, *by Barber, London*
- 222 A purple leather jewel case, a silver card case, a porcelain plaque, painted in female sleeping figure, and sundries
- 223 A black lacquered cabinet with 5 trays, enclosed by 2 doors, containing a collection of shells, etc.
- 224 A Dresden china centrepiece with figures of children in high relief, 4 dishes, 6 candelabra branches, a Sèvres cup and saucer, an Oriental blue and white bulbous drinking vessel, and a timepiece

- 225 A wheel barometer and thermometer, in mahogany case with painted porcelain plaques inset
- 226 Two Soong Celadon glazed rice bowls, $8\frac{1}{2}$ in. and $7\frac{1}{2}$ in. diam., an Oriental bowl, enamelled in colours, and a 6in. long-neck bottle
- 227 A pair of Oriental porcelain figures of rabbits, mottled sang-de-boeuf, $9\frac{1}{2}$ in. wide, wood stands
- 228 A pair of Berlin octagonal-shape dishes, the centres decorated in garden scenes and figures, pierced edges, 13in. wide
- 229 A spy glass, in case, an oak lid—Royal George sunk, 1782, 2 steel tobacco boxes, and 13 other pieces
- 230 A set of 3 old English brass fire implements, a brass door knocker, and a copper warming pan with wood handles
- 231 A pair of old Sheffield plated pillar candlesticks, a panel of wood from Big Tree Sequoia Gigantia, in case, 2 Bristol glass bottles, and 3 other pieces
- 232 A plated cruet stand with 5 cut-glass vase-shape bottles, silver mounts
- 233 A plated 3-hole pierced decanter stand with 3 pink and engraved glass bottles and stoppers
- 234 An old Russian silver-mounted ikon
- 235 A Sheraton mahogany and inlaid wheel barometer, mounted with 8-day clock, by *J. Somalvico, London*, 49in. high
- 236 A Japanese ivory carving—Man carrying basket, $10\frac{1}{2}$ in. high

SILVER—AT PER OUNCE.

		ozs. dwts.
237	An old English oval-shape cake basket, pierced and repoussé in husk festoons, swing handle.. ..	37—8
238	A George III oblong snuffbox, engraved, <i>Edinburgh mark</i> (4 ozs.).. ..	all at
239	A George III hot-water jug, chased	27—10
240	A George I tumbler cup, <i>London</i> , 1720	all at
241	A George III (1800) oval cake basket with swing handle, engraved, reeded edge, <i>Edinburgh marks</i>	28—10
242	A child's christening set of silver knife, fork and spoon, in case, and a silver knife and fork, ivory and gilt lacquered handles.. ..	all at
243	Shell and thread table plate, <i>comprising</i> :—6 large and 6 small forks, and 6 dessert spoons	43—9

ozs. dwts.

- 244 Two five-shilling pieces.
- 245 *Georgian Silver.* A gravy spoon, a pair of table-
spoons, feather edge, a set of 6 teaspoons, and a
sugar tongs 10—17
- 246 A Burmese silver bowl, repoussé in elephants, figures,
scrolls, etc. (23 ozs.) all at
- 247 A George IV (1825) silver fluted goblet, and a Vic-
torian oblong tray, repoussé 16— 0
- 248 A Japanese silver and enamelled cylinder, damascened
in iris (10 ozs. 16 dwts.) all at
- 249 A silver cigarette box, a card case, engraved, and a
Chinese mirror, chased in dragon pendant . . .

PLATED

- 250 An old Sheffield oblong teapot, on bun feet, and a plated part-
fluted hot-water jug
- 251 Twelve pairs of plated dessert knives and forks, carved mother-
o'-pearl handles, in rosewood case
- 252 A pair of old Sheffield circular standing salt cellars, gadroon,
and a plated coffee pot, part fluted, on stand and lamp
- 253 A pair of old Sheffield plated 3-light candelabra on circular
bases, chased, 21in. high
- 254 An old Sheffield coffee pot, scroll edge
- 255 A tea service, repoussé in scrolls, on paw feet, 3 pieces
- 256 A 2-handle oval tea tray, engraved, 30in. wide
- 257 A muffin dish and cover, and a coffee pot
- 258 A set of 4 old Sheffield dish covers
- 259 A plated 2-handle oval tea tray, engraved, 28in. wide, and
an oval entrée dish and cover
- 260 A 2-handle oval tea tray, 30in. wide, and a soup tureen and
cover, chased edge
- 261 A pair of Sheffield plated mustard pots, pierced, blue glass
liners
- 262 An old Sheffield oblong tea tray, chased edge (1 handle only)
- 262A Two plated breakfast cruets with glass receivers

MISCELLANIES

- 263 A Staffordshire china tea and coffee service, painted in moss
roses, 41 pieces
- 264 Two old English cut-glass decanters and stoppers, another
pair, smaller, and 3 other pieces

380
Budds
457

- 265 A pair of Jacobean cordial glasses on baluster stems *25/- Ross*
- 266 A 9in. old Staffordshire brown ware jug with figures and vine leaves in relief, a bronze bust of Schiller on marble plinth, *28/-*
9½in. high, and a plated snuffers and tray
- 267 Staffordshire toy tea ware, 19 pieces, a Spode fluted teapot, sugar basin and cream jug, with plated mounts, a Spode *30/-*
blue and white teapot and cover, and 13 other pieces
- 268 A pair of silhouette pictures—Lighthouse and Vessels, *45/-*
U.S.S. Constitution and Perseverance, framed
- 269 Another pair—On the Way to the Derby, and Returning *35/-*
from the Derby, framed *45/-*
- 270 An old English hanging ebonised and gilt corner cupboard with continued back and shelf, and door painted in shipping in colours *50/-*
- 271 A Rockingham vase and a beaker vase, decorated in flowers, marone ground, a Staffordshire jug, 7 other pieces, and a japanned trunk *48/-*
- 272 Four metal trays, a Japanese Celadon ground cylinder, and a set of steel fire implements *35/-*
- 273 Five cream ground flowered brocade chair backs, and 4 petit *50/-*
and gros-point chair seat covers *Wright*
- 274 Eleven pieces of green and yellow tapestry chair coverings *25/-*
- 275 A woven tapestry settee seat cover, an old English needlework chair seat, another chair seat and back worked in flowers and foliage, and 5 other pieces *48/-*
- 45/- 70/-* (276) A scrap book containing a quantity of prints of scenes in military and native life
- 45/- 70/-* (277) A similar lot
- 40/- 70/-* (278) A coloured print—Pilgrims en route to Mecca, and 2 others
- 40/- 70/-* (279) A coloured print—A Sister of Mercy, Afghan War, and 1 other
- 280 A miniature mahogany chest of 4 drawers, 14½in. by 13in.
- 281 An Italian hanging mirror with bevelled plate in appliqué bone frame carved in armorial bearings, dolphins and foliage, 2ft. 7in. high, 1ft. 8in. wide
- 282 A sword with curved quillons in sheath, 2 Masonic swords in leather sheaths, a German porcelain pipe with long wood stem, and a stick, carved
- 283 A collection of plaster intaglio impressions in 10 trays
- 284 *Oriental.* A cylindrical vase enamelled in utensils, 17½in. high, a 10in. blue and white vase, and 3 blue bowls

- 285 A Canton enamel jardiniere decorated in gilt on a blue ground, *4½ in. high*, and an enamelled circular jardiniere decorated in flowers and insects
- 286 A Vienna circular enamel box and cover, decorated in mythological figures
- 287 Another, oval, the interior and exterior decorated in mythological figures, the base in ruins
- 288 A Chinese porcelain oblong teapot and cover, enamelled in flowers, rocks, diaper, etc., "*famille verte*", and another, enamelled in flowers and foliage
- 289 *Old Peuter*. An 8in. plate, *London mark*, a snuffers tray, a pierced oval dish, a copper plated mug with steamer, and a French demi litre
- 290 A 3-fold gilt screen with panels painted in woodland scenes, cottages, figures, etc.

Lots 291 to 323 are the property of a Gentleman

- 291 A pair of porcelain figures of Youth and Girl on gilt scroll bases and encrusted in flowers, *14 in. high*
- 292 A porcelain equestrian group—Frederick the Great, in the white, *11 in. high*
- 292A A Dresden china cabaret, painted in sprigs of flowers, *8 pieces*
- 293 A pair of 7in. Colebrookdale vases, painted and encrusted in flowers, another, scroll shape, *7 in. high*, 2 Dresden china white and gilt tazza dessert dishes, and 2 plates
- 294 A 10in. blue Wedgwood oviform vase, with white camei belts, and another pair with covers, with white camei belts of classical figures, *8 in. high*
- 295 An enamelled shaped oval box, painted in flowers, the lid decorated in Port scene, and an oblong enamelled box, decorated in panels of landscapes, figures, cattle, etc., on a pink ground
- 296 A pair of 7½ in. china figures—Man with pots, and Man taking snuff, and a Dresden group of 3 children emblematic of Sport, *6 in. wide*
- 297 A pair of 9in. porcelain figures—Youth and Girl with fowls, and a Vienna china group—Lady and Man with spy-glass, *8 in. high*
- 298 Four pairs of china figures, *5 in.*, *6½ in.*, and *6 in. high*, and 1 other

- 299 A Dresden china group of 2 figures, a porcelain group—Courtier and Lady, 6in. high, another—Girl and birdcage, and another—Girl and swans
- 300 A porcelain group of 3 figures of Young Cupid and 2 children, 7in. high, and group—Girl with lamb, 8½in. high, and a group of 2 children, *in the Höchst taste*
- 301 An arbour group—Girl with bird, a Chelsea figure—Man playing pipes, and a pair of china groups—The Tailor and his wife
- 302 A pair of 6½in. china egg-shape vases and covers, on scroll feet, painted in figures, and a pair of 6½in. sugar castors, painted in river scenes, yellow ground
- 302A A French china cup and stand, painted in portrait of a lady, green ground and gilt
- 303 A Sèvres china large cup and saucer, decorated in portrait of a lady, gros-bleu and gilt
- 303A Three cups and saucers, blue ground and gilt, smaller
- 304 An oval Indian plaque, decorated with 9 miniature views, 4 ivory circular boxes, the lids with miniatures of ladies, and a set of 4 Chinese ivory napkin rings, carved
- 305 A pair of field glasses, *by Callaghan, Paris*, in case
- 306 A French miniature—Portrait of Louis XIV, another of a Lady, *ovals*, and 2 others of Officers, *circles*, in ormolu frames
- 307 Six French miniatures—Portraits of Ladies, in ormolu frames
- 308 A set of 6 Sèvres china plates, painted in portraits, in gilt scroll panels and borders in fleurs-de-lys, turquoise blue ground
- 309 A Sèvres china square-shape tray, pierced scroll gallery, on feet, and centre painted in figures, a Rouen miniature shaped oblong table, 3½in. high, and another, smaller
- 310 Two Chinese ivory card cases, incised in buildings, figures, etc., a paper knife, the handle carved in peonies, and a pair of tortoiseshell spill vases, engraved, in cases
- 311 A lady's companion set in tortoiseshell, veneered and mother-o'-pearl inlaid case, and a peacock feather fan, on tortoiseshell sticks
- 312 Two Chinese ivory card cases, incised in figures, buildings, etc., a paper knife, gilt lacquered in peonies and foliage, and a silver oval box with pin cushion lid

- 313 A carved jet necklace, brooch buckle and pair of ear-rings, in case, a lace parasol with ivory stick, and a cretonne and lace workbag
- 314 A tiepin with miniature of a dog, another, enamelled, a tortoise-shell miniature mandolin, a silver spectacle case, 2 tortoise-shell lorgnettes, and 3 other pieces
- 315 Two ivory backed brushes, a hand mirror, a powder box and cover, a blue basalt oval box and cover, and a cut-glass essence bottle, silver mounted
- 316 Three pairs of lace curtains
- 317 Three travelling rugs, a blue cloth carriage rug, 4 cretonne covers, and 5 other pieces
- 318 Four lace embroidered dressing table covers, 9 others, and 18 d'oyleys
- 319 A crochet lace jacket and collar, and an Indian embroidered shawl, tasselled
- 320 A Chinese white crepe shawl, embroidered in flowers, and deeply fringed
- 321 A quilted handkerchief satchel, 8 linen covers with insertion, and 9 other pieces
- 322 A photogravure—Youth and Girl in a garden, an engraving—A Bard, and 4 colour prints—Figure Subjects
- 323 The Holy Family (oils), and a Landscape and Huntsman

*Lots 324 to 347 removed from Lee Rd., Blackheath, are
the Property of a Lady*

- 324 A pair of Dutch brass vase-shape jardinières, with scroll handles, repoussé in panels of figure subjects, animals, etc., and foliated scrolls, 14in. high
- 325 A French bronze figure of a Girl seated, with guitar, by *Susre, Paris*, 21in. high
- 326 Another of a Bedouin playing musical instrument, by *A. Meyer*, 26in. high
- 4 327 A French bronze figure of a Roman General, with figure of Child at foot, 26in. high, on black slate and marble plinth *5 1/2 80*
Duck
- 328 A bronze figure of an old Man seated, holding a pig, on marble base, 14in. high
- 329 A bronze figure of a Man seated, holding a book, 12in. high
- 330 A bronze bust of a laughing Bacchanal, on green marble plinth, 15in. high

- 331 A bronze figure of a Girl, on circular base, 13in. *high*
- 332 A set of 3 Oriental china vases, and 2 covers, and 2 beakers, decorated in birds, flowers, etc., in low relief, in blue, on a yellow ground, 18in. *high*
- 333 A pair of French china oviform vases, and covers, painted in winged female figures, ormolu mounts, 21½in. *high*
- 334 A pair of plated vases, with scroll-shape handles, and chased with belt of classical figures in high relief, on square bases, 17in. *high*
- 335 A pair of plated 2-light candelabra on elephant ivory tusk column, carved with berries and foliage, in relief, on square step bases, gadroon edges, 18in. *high*
- 336 A plated coffee pot, a sugar basin and cream jug, a circular tray, and an old Sheffield decanter stand
- 337 *Plated.* An oblong cake basket, with swing handle, an engraved teapot, a hot water jug, repoussé, and a pierced bottle stand
- 338 A walnut and brass mounted table writing desk with folding top, 15in. *wide*, and an Italian walnut ebonised relieveo plaque—A Monk, 19in. *by* 12in.
- 339 *Bronzes.* A pair of 2-light candelabra with foliated branches supported by Asiatic figures on slate bases, 13in. *high*, and a pair of ewer vases, on slate bases, 15in. *high*
- 340 A gilt bronze bas-relief—Girl seated on pedestal reading a book, green marble back and base, 17in. *high*, 10½in. *wide*
- 341 A pair of Imari vases and covers, purple, red and gilt, 14in. *high*, and a pair of Doulton vases, incised in horses, 15in. *high*
- 342 A timepiece in bronze case, a bronze figure of a Girl, and another of a Youth carrying grape baskets
- 343 An 11in. brass circular dish, engraved, and mother-o'-pearl inlaid, a brass cylinder, a circular stand, and 2 brass hanging vases
- 344 A modern Worcester vase and cover, pink and yellow, an Italian stoneware water pot, and 4 other pieces
- 345 *Bronzes.* A Japanese bronze crab, with reticulated panels, a marble paperweight with bronze serpent mount, a pair of bulldogs, 3½in. *high*, and 4 other pieces
- 346 A Ware circular plaque, painted in bust of a Child, with mob cap, framed

- 347 A pair of Japanese black lacquered upright panels, decorated in river scenes, mountains, etc., and overlaid with figures in ivory, 4ft. by 1ft. 2in.

Lots 348 to 377 removed from 29 Broom Water, Teddington, are to be sold by direction of the Executors of S. A. Smith Esq., decd.

- 348 *Staffordshire.* A 15in. figure of Will Watch, another of a Highlander, and 3 other pieces
- 349 *Staffordshire.* A 7in. arbour group—Uncle Tom, a figure of a Lion, and 5 other pieces
- 350 Six *Staffordshire* figures
- 351 *Staffordshire.* Three arbour figures, a rustic vase, and 3 other pieces
- 352 A pair of china figures of Youth and Girl, *in the white*, 24in. high
- 353 A pair of 12in. Cloisonné enamel vases, blue ground, and another pair, black ground
- 354 A cut-glass claret jug, with plated mounts, a circular mirror in brass frame, on tripod, and a copper hanging lantern
- 355 A SPODE WARE DINNER SERVICE, *Oriental decoration*, 163 pieces, 12 Spode dessert plates, 2 square-shape dishes, and a strainer, *Oriental decoration with birds*, 178 pieces
- 356 A pair of Satsuma vases, decorated in asters and ho-ho birds, encrusted by dragons, 11½in. high, and a 7½in. blue mottled long-neck Oriental bottle
- 357 Part of an old English dessert service, purple, red and gilt, 8 pieces, a pair of pearlware dessert dishes, *Oriental decoration*, a pair of blue and white Nankin saucer dishes, 6 marks, and 3 other pieces
- 358 A *Staffordshire* Toby jug, 3 mugs, a cover, a 10in. blue and green ware vase, and 8 other pieces
- 359 *Engravings.* The Marquis of Stafford and Lady Leveson Gower, and 5 other portraits
- 360 *Engravings.* A pair of coloured prints—The Smugglers Alarmed, and the Smugglers Attacked, The Clipper Ships, Taeping and Ariel, and 4 others
- 361 A Baxter print—The Soldier's Farewell, 2 tinsel pictures, and 4 other engravings

DECORATIVE FURNITURE

- 362 A mahogany and satinwood inlaid bookcase, enclosed by 2
diaper panelled doors and cupboard under enclosed by 2
doors, on cabriole legs and club feet, cornice over, 3ft. 6in.
wide
- 363 A set of 6 carved walnut chairs, seats covered in saddlebag
- 364 A mahogany and inlaid satinwood bookcase enclosed by 2
glazed diaper panelled doors and cupboard under enclosed
by 2 doors, on cabriole legs and club feet, 3ft. 6in. *wide*
- 365 A pair of mahogany chairs with railed backs and arms, carved
in husks, on square shaped legs and stretchers, seats
covered in green morocco
- 366 A carved walnut hallstand with drawer and bevelled mirror
panel, 3ft. 2in. *wide*
- 367 A SEMI-GROUND PIANOLA PIANOFORTE IN MAHOGANY CASE;
by Weber
- 368 A mahogany and banded satinwood music cabinet enclosed by
2 panelled doors, on tapered legs and tray stretcher, 24in.
wide
- 369 One hundred and two pianola rolls, in cases
- 370 AN OAK DRESSER, with shelves and cupboards at ends, and
3 drawers under, apron front with 4 small drawers, on
cabriole legs and club feet, on oblong plateau base, 7ft.
wide
- 371 A carved walnut wardrobe with cupboards and recesses,
2 small drawers and 3 drawers under and hanging cupboard
at end, with bevelled mirror panelled door, 5ft. 2in. *wide*
- 372 A 3ft. mahogany dressing table with 3 drawers and swing
mirror over
- 373 A mahogany basket jardiniere on pillar and circular base
- 374 A mahogany chest of 3 long and 2 short drawers
- 375 A mahogany hanging wardrobe with bevelled mirror panelled
door and drawer under, 3ft. 2in. *wide*
- 376 A 3ft. mahogany dressing table with drawer and swing mirror
over, on square legs and tray stretcher
- 377 A 3ft. carved mahogany piano settee on 6 cabriole legs,
crimson velvet cover, hinged seat enclosing well

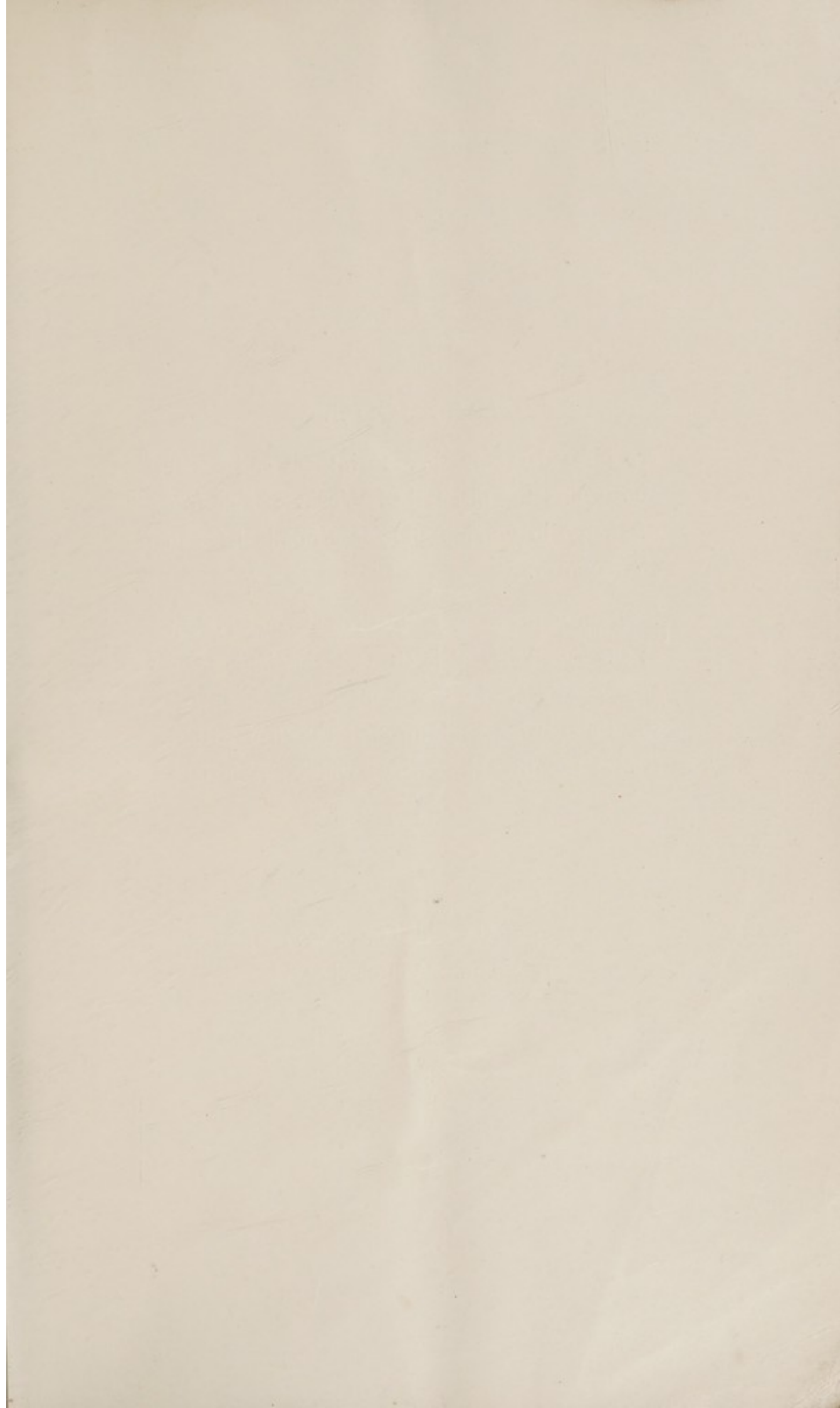
Other Property

- 378 A 4ft. 6in. circular marquetry table of walnut and kingwood, on square-shape plinth and scroll feet, carved in acanthus foliage
- 379 An oak cradle with carved sides and hood
- 380 An old English clock with steel and chased ormolu dial, *by John Hindmore, London*, in black and gilt lacquered upright case, decorated in the Chinese manner
- 381 A Japanese black and gilt lacquered metal cap-à-pie suit of armour, on wood pedestal
- 382 A stained-as-mahogany deal plate chest with 4 drawers, 23in. wide
- 383 A walnut circular-back chair with arms, with rail back and cane seat, and another with cane seat and back and shaped stretchers
- 383A An old English mahogany dwarf bow-front chest of 2 small and 2 long drawers
- 383B An oak table with drawer, on twisted legs and stretchers, 2ft. 6in. wide
- 384 An oak chest
- 385 A luggage stand
- 385A An old English oak linen chest with panelled front and sides, on feet, 3ft. 5in. wide
- 386 A Persian white marble circular-top table, inlaid Arabic inscription, on ebonised stand with feet, galleried tray stretcher, 23½in. diam.
- 387 A 27in. oak oblong table with drawer, on ball frame legs and stretchers, and a mahogany railed square-shape jardiniere, on tapered legs
- 388 An old English mahogany flap table, on club feet
- 389 A carved oak bureau with fall front enclosing drawers and pigeon-holes, and 4 drawers under, continued back, on bracket feet, 3ft. wide
- 390 An old English clock with steel and chased ormolu dial, *by Thos. Ollive Cranbrook*, in mahogany upright case, the hood with pilasters and key pattern frieze
- 391 A Victrola mahogany gramophone cabinet
- 396 A lacquer decorated coffee table on shaped supports

- 397 A mahogany and satinwood oval 2-tier tea table inlaid in foliated scrolls and trophies, 2-handle loose tray with glass bottom, on shaped supports, legs and stretchers, 2ft. 10in. wide
- 398 A wheel barometer and thermometer in mahogany case, inlaid in shells in satinwood, *by E. Cattania*
- 399 A boudoir grand pianoforte in case, *by Liehr*
- 400 A Regency lacquer cabinet, with open centre cupboard at end, fitted 2 panelled doors, marble top
- 401 A set of 4 (3 and 1) decorated green and gold chairs with cane seats
- 402 A pair of mahogany circular footstools on cabriole legs, bead-work tops
- 403 An old English mahogany 4-fold screen, with 6 telescopic panels, decorated in birds, flowers, etc.
- 404 An old English painted bookshelf, with open cupboard under, fluted pilaster supports
- 405 A decorated armchair, buff ground, interlaced splat, tapered legs and cane seat
- 406 A pair of Hepplewhite mahogany chairs with shield-shape backs and arms, the top rails carved in honeysuckle and railed splats, carved in husks, on tapered legs and toes
- 407 A Chippendale mahogany circular "pie-crust" table, on turned pillar and carved claw, 21½in. diam.
- 408 An old English mahogany circular table, on turned pillar and claw with club feet, 22in. diam.
- 409 A carved oak arched wall open cabinet with 2 shelves, 5ft. 3in. wide
- 410 A set of 4 old English mahogany chairs with loose seats, on turned legs
- 412 A red Boulle and brass inlaid bow-front corner cabinet, enclosed by glazed panelled door, ormolu mounts, 31in. wide
- 413 A bevelled mirror in carved oak frame, 3ft. 3in. by 2ft. 7in.
- 414 A mantel glass in mahogany reeded frame, with cornice over, 4ft. 3in. by 2ft. 4in.
- 415 A walnut oblong stool, on cabriole legs, seat covered in tapestry, 24in. wide
- 416 An oak dwarf gate-leg oval-top table, with fall-down flaps, 19in. wide

- 417 A 4-fold leather screen, painted in flowers and foliage on a gilt background, 1ft. 10in. wide, 6ft. 6in. high
- 418 An old English mahogany circular-top table, on turned pillar and claw, the shoulders carved in shells and husks and acanthus foliage feet, 32in. diam.
- 419 A Wilton Persian pattern carpet, crimson ground
- 420 An old English mahogany oblong table with drawer, oak lined, on turned legs and club feet, 30in. wide
- 421 An old English mahogany circular tray-top table, on turned pillar and claw, 19in. diam.
- 422 A mahogany shaped-top oblong show table with glazed top and sides, on cabriole legs and tray stretcher, ormolu mounts and gallery, 17in. wide
- 423 A hanging mirror, in gilt frame, husk and floral ornament and vase surmount, 2ft. 10in. by 1ft. 7in.
- 424 An old English clock, with enamelled dial, in mahogany upright case
- 425 A celestial globe, on mahogany stand and tripod
- 426 A Turkey carpet, blue, red and green, cut 15ft. 3in. by 13ft.

FINIS



Messrs. FOSTER

are pleased at any time to inspect and advise concerning the disposal of Works of Art free of charge in London and for a nominal fee in the country.

Insurance and Probate Valuations are undertaken at the Auctioneers' Institute scale charges, or an agreed fee. In the event of the property so valued being sold through the firm within twelve months, the charge will be remitted.



54 PALL MALL, S.W. 1.
Telephone: Whitehall 6909