

**Sales catalogue: Foster**

**Publication/Creation**

1 May 1930

**Persistent URL**

<https://wellcomecollection.org/works/yx9y4tb8>

**License and attribution**

This work has been identified as being free of known restrictions under copyright law, including all related and neighbouring rights and is being made available under the Creative Commons, Public Domain Mark.

You can copy, modify, distribute and perform the work, even for commercial purposes, without asking permission.



Wellcome Collection  
183 Euston Road  
London NW1 2BE UK  
T +44 (0)20 7611 8722  
E [library@wellcomecollection.org](mailto:library@wellcomecollection.org)  
<https://wellcomecollection.org>

*Mr Stan. 12 May 1930*

*Mr Stan*

By directi

THE

	DATE	INITIALS
SALE FOS	1. v. 30	ALD.
PURCHASE		
CHECKED	2. v. 30	Kh.
COLLECTED		
RECEIVED	9/v/30	J
ACCESSED	9/v/30	J
PASSED	10.5.30	<u>Luffen</u>

TELEPH  
*Easy*  
*Mr Stan*  
*Mr Stan*

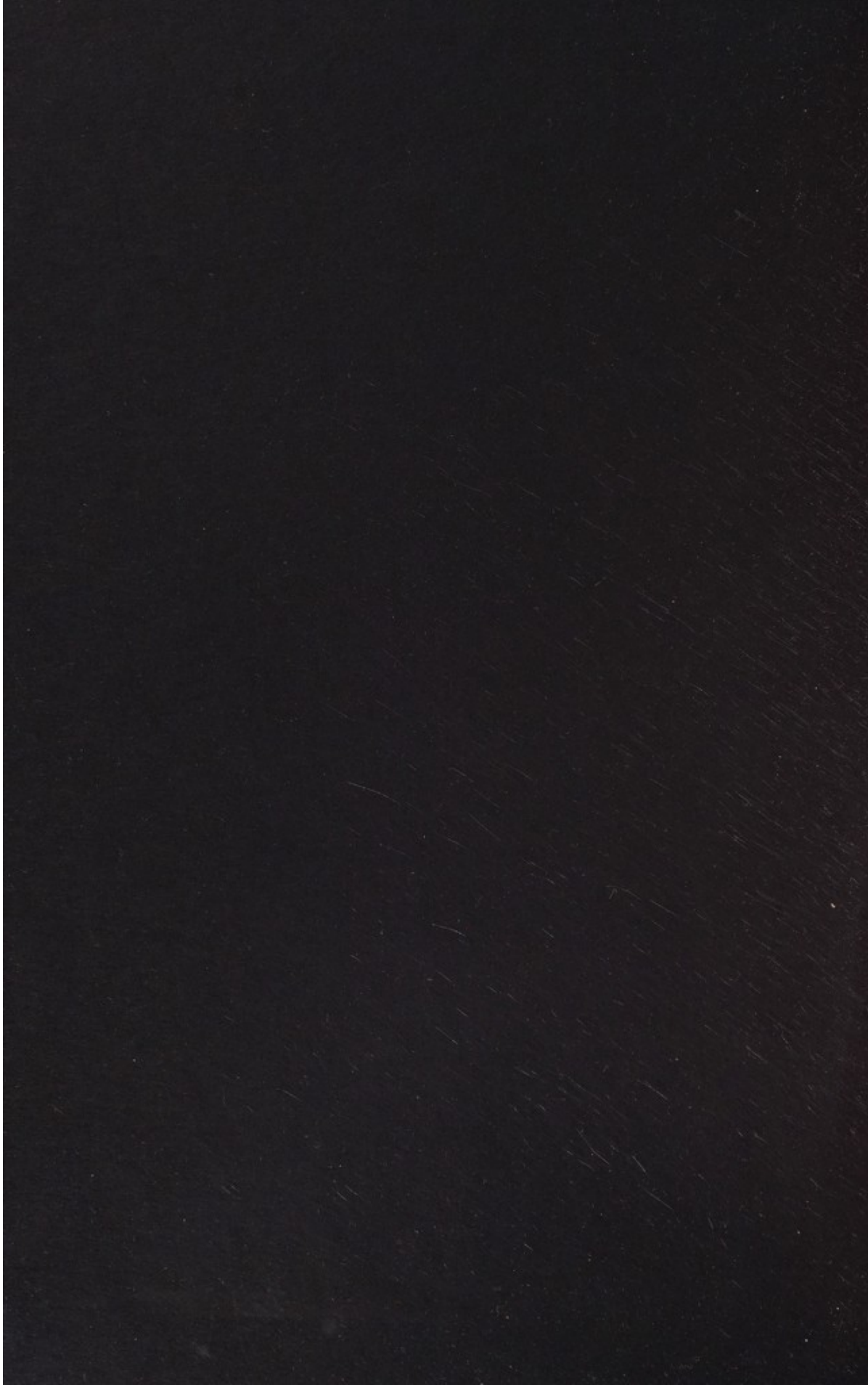
# BENIN BRONZES

Formed by the late G. W. NEVILLE, Esq.

WHICH WILL BE SOLD BY AUCTION  
 ON THURSDAY, MAY 1ST, 1930,  
 AT TWO O'CLOCK PRECISELY.

*Kh*  
*40*

Auctioneers:  
 MESSRS. FOSTER,  
 54, PALL MALL,  
 LONDON, S.W.1.



*In 15ans*

By direct

CHIEF  
CLERK  
OFFICE

A CATALOGUE  
OF  
THE HIGHLY IMPORTANT COLLECTION  
OF



**BENIN BRONZES**

Formed by the late G. W. NEVILLE, Esq.

WHICH WILL BE SOLD BY AUCTION  
ON THURSDAY, MAY 1ST, 1930,  
AT TWO O'CLOCK PRECISELY.

*Ken*  
40

*Auctioneers :*  
MESSRS. FOSTER,  
54, PALL MALL,  
LONDON, S.W.1.



BUYER

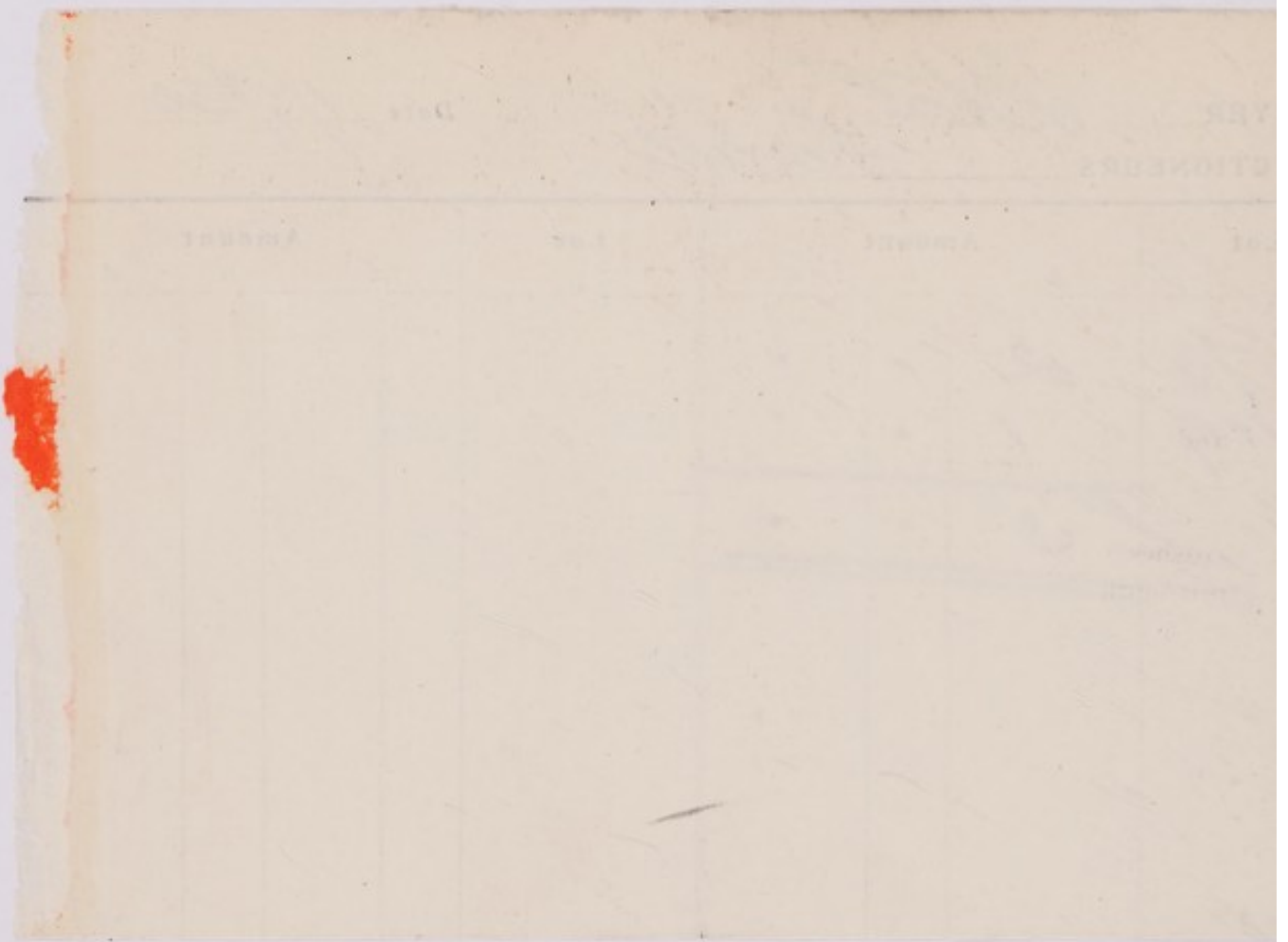
*Alton Yorkis*

Date

*1/5/30*

AUCTIONEERS

Lot	Amount			Lot	Amount		
	£	s.	d.		£	s.	d.
<i>73</i>	<i>2</i>	<i>.</i>	<i>.</i>				
<i>119</i>	<i>1</i>	<i>.</i>	<i>.</i>				
	<i>£ 3</i>	<i>.</i>	<i>.</i>				



WA/Hmm/cm/82/6/58

By direction of the Executors of the late G. W. Neville, Esq.

Telephone: REGENT 0909. Telegraph: FOSTERDOM, LONDON.  
PALL MALL.

A CATALOGUE  
OF THE HIGHLY IMPORTANT BRONZES, IVORY AND  
WOOD CARVINGS  
FROM  
THE WALLED CITY OF BENIN, WEST AFRICA.



6 MAY 1930

A. Latham, Esq.

TELEPHONE NO. REGENT 0909.

1930

in account with Messrs. FOSTER,

54, PALL MALL, LONDON, S.W.1

1/ May To Bought

	£	s.	d.	£	s.	d.
43	84	-	-			
56	88	4	-			
72A	2	10	-			
120	1	15	-			
	<u>£176</u>	9	-			



Redmond  
Cork  
J. K. Jones  
7/5/30





WA/Hmm/cm/52/6/58

*By direction of the Executors of the late G. W. Neville, Esq.*

Telephone: **REGENT 0909.**      Telegraph: **FOSTERDOM, LONDON.**  
**PALL MALL.**

---

---

**A CATALOGUE**  
**OF THE HIGHLY IMPORTANT BRONZES, IVORY AND**  
**WOOD CARVINGS**  
FROM  
**THE WALLED CITY OF BENIN, WEST AFRICA.**



*Forming the Collection of the late G. W. Neville,  
Weylea, Weybridge, a member of the Benin Punitive Expedition,  
who himself removed them after the capture of the City of Benin.*

WHICH WILL BE SOLD BY AUCTION, ON THE PREMISES AS ABOVE

---

---

**MESSRS. FOSTER**

(Established 1810.)

---

---

*At the Galleries, 54, Pall Mall, S.W. 1.*

**THURSDAY, MAY 1st, 1930.**

**AT TWO O'CLOCK PRECISELY.**

---

---

May be viewed two days prior and Catalogues by  
Auctioneers, Messrs. FOSTER, 54 Pall Mall.

SAMUEL STEPHEN, LTD., NEWS BUILDINGS, CRYSTAL PALACE, S.E.

## CONDITIONS OF SALE.

---

FIRST.--The highest bidder to be the buyer ; and if any dispute arise between two or more bidders, the lot in dispute shall be immediately put up again and re-sold, or not, as the auctioneer may decide, who is also to regulate the biddings and be the sole arbiter. The vendors reserve the right of bidding by themselves or agent, and of withdrawing any lot or lots.

SECOND.--The purchasers to give in their names and places of abode, and to pay down, *if required*, 5s. in the £, or more, in part of payment, or the whole of the purchase-money, in default of which the lot or lots so purchased to be immediately put up again and re-sold.

THIRD.--The lots are to be taken away and paid for, whether genuine and authentic or not, with all faults and errors of description, the day after the sale ; Messrs. FOSTER not being responsible for the correct description, genuineness, or authenticity of any lot.

FOURTH.--To prevent inaccuracy in delivery and inconvenience in the settlement of the purchase, no lot can be transferred, nor can any lot be removed during the time of sale. Each buyer must pay for the whole of his purchases before any lot is removed.

FIFTH.--All lots uncleared within the time aforesaid may be re-sold by public or private sale, when and where the vendors think proper without notice to the defaulter ; and the deficiency (if any), and the expenses attending such re-sale, and any other loss the vendor may sustain, shall be made good by the defaulter, but this condition is without prejudice to the vendor enforcing the purchase, whether a deposit has been paid or not.

NOTE.-- *All lots remaining uncleared, by either Vendors or Purchasers, beyond three days from the day of sale will be subject to a charge of 2s. 6d. each per week for warehousing from the day of sale*

BUYER

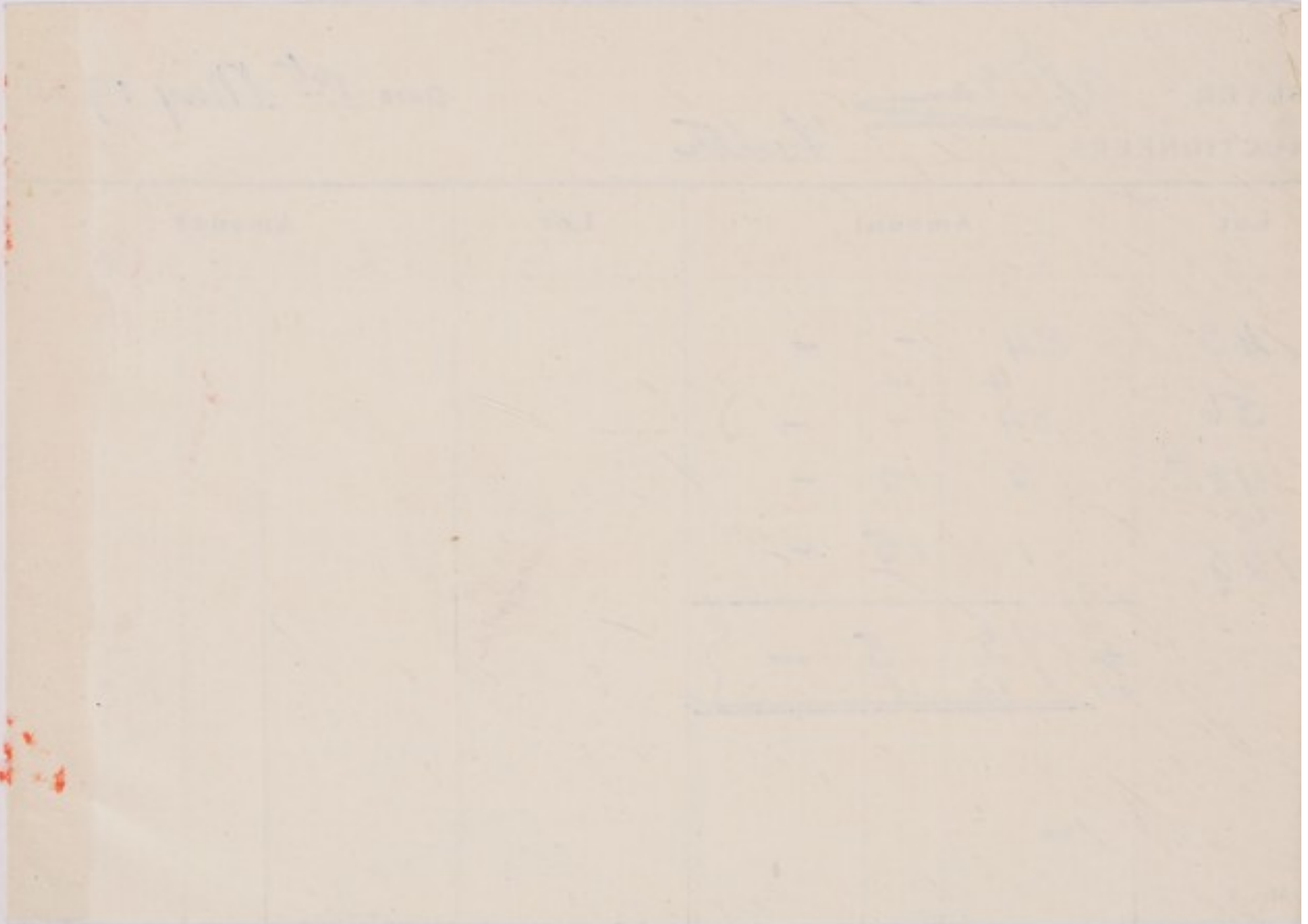
A. Dean

Date 1<sup>st</sup> May 1930

AUCTIONEERS

Foster

Lot	Amount			Lot	Amount		
	£	s.	d.		£	s.	d.
43	84	-	-				
56	84 <sup>4</sup>	4	-				
42 <sup>A</sup>	2	10	-				
120	1	15	-				
	<u>£142</u>	<u>4</u>	<u>5</u>				



## FOREWORD.

---

### Benin, "the City of Blood."

---

**B**ENIN, the walled city at the mouth of the Niger, West Africa, was discovered by the Portuguese at the end of the fourteenth century. The inhabitants would appear to have learned the art of brass work and casting in bronze from these Portuguese explorers.

In 1896 an expedition, consisting of some 250 men with presents and merchandise, endeavoured to penetrate to Benin City. Almost unarmed, neglecting all ordinary precautions, and with the express prohibition by the King of Benin to advance, they marched straight into an ambushade which had been prepared for them in the forest on each side of the road. Their revolvers were locked away in their boxes at the time, and the whole expedition was massacred with the exception of two, Captain Boisragon and Mr. Locke, who escaped, after the utmost hardship, to the British Settlements on the coast to tell the story of the disaster. Within five weeks after the massacre, a punitive expedition entered the City of Benin, and annexed it to the British Crown. The city was found in a terrible state of disorder and bloodshed; in the King's compound and the Ju-Ju houses were discovered numerous works of art in bronze, ivory, brass, etc., buried, in several instances, and covered with the blood of human sacrifice.

# CATALOGUE

---

THURSDAY, MAY 1ST, 1930.

---

AT TWO O'CLOCK PRECISELY.

---

## WEST AFRICAN NATIVE WOOD CARVINGS.

- 1 Three carved wood figures—A Houssa Corporal and two Europeans, 10in., 10½in. and 11in. high
- 2 Another of Queen Victoria, 11½in. high
- 3 Two grotesque figures of women, 13in. high
- 4 Two grotesque groups—Women and Children, 12½in. high
- 5 A grotesque group—Chief on horseback, surrounded by four attendants, 13in. high
- 6 An old carved wood figure of a cockerel supporting a sacrificial bowl, 9¾in. high
- 7 An old carved and painted wood chieftain's stool, supported by a figure of a native, 14in. high
- 8 An old carved and painted wood chieftain's stool, supported by a figure of a native chief on horseback, and four attendants at the corners, 18in. high
- 9 A carved and painted wood devil mask, with straight combed hair, 8in. high 2½ qd
- 10 A grotesque stained carved wood figure of a native woman, with bone necklace, holding a bowl, 22in. high 45/-  
Helly
- 11 A carved ebony figure of an elephant, 13in. high 11/-

- 12 Another, 12in. high 2/-
- 13 A CARVED WOOD DEVIL MASK, COVERED WITH HUMAN SKIN AND LACQUERED; IN THE FORM OF THREE HEADS, WELL FASHIONED, OF NEGROID TYPE, 18in. high 16/16/-
- 14 Three grotesque carved wood figures of kneeling women, 10½in. and 9in. high 39s
- 15 A 9½in. grotesque carved wood figure of a kneeling man and a mace, surmounted by a figure of a man, 13½in. high 4½ 29s
- 16 A wood bowl with hinged lid, supported by two figures of pigeons, 9½in. high, a 4½in. box and cover, carved with head of an animal, and another 36/-  
Kelly
- 17 A wood box and cover in form of an alligator, 23in. long, and a grotesque head, 12in. high 45/-
- 18 Two native wood double combs, 5 others, and a spoon 22/-
- 19 A walking stick, carved as a chain, and 4 other pieces of native carving 16/-  
Morin
- 20 Five native carved wood paddles 22/-
- 21 THE WAR DRUM OF BENIN CITY, CARVED IN PANELS OF GROTESQUE HEADS, AND SERRATED BANDS, ETC., THE TOP COVERED WITH LEOPARD'S HIDE AND PEGGED AT SIDES, 3ft. 8in. high, on carved wood stand with claw feet 619s.

## PART OF THE GOLD REGALIA OF KING PREMPEH.

- 22 A pendant, formed as two padlocks, and chased in scrolls 16/16/-
- 23 A circular medallion repousse in conventional design, 4in. diam. 8½ 29s

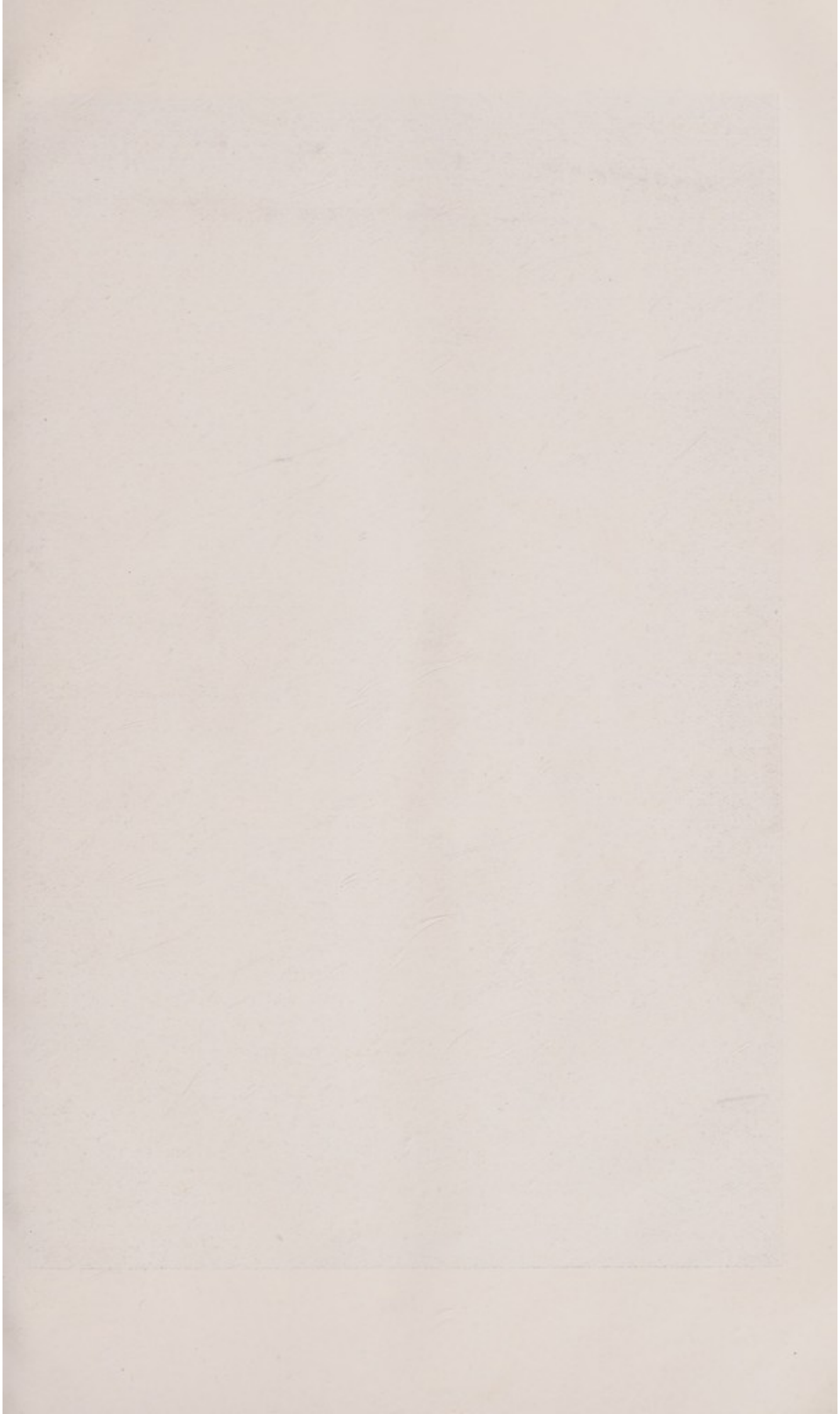


- |    |                                                     |          |
|----|-----------------------------------------------------|----------|
| 24 | An antique ring of twisted design                   | 3/5/-    |
| 25 | Another, incised                                    | 3/-/-    |
| 26 | A thumb guard repousse in scrolls, 2½ in. long      | 3/15/-   |
| 27 | A star-shaped medallion chased in rings, 2 in. wide | 8/-/-    |
| 28 | A pair of small cylindrical ornaments, and another  | 6/-/-    |
| 29 | Two tapered repousse ornaments, and 1 other         | 17½ grms |
| 30 | A pair of twisted gold earrings                     | 4/-/-    |

## BRONZES.

*The following eight lots were used as stands for the carved ivory tusks which were the Ju-Jus in Benin City.*

- 31 A CAST OF A HUMAN HEAD, with negroid features, three tribal marks over each eye, reticulated head-dress with rosettes, with choker representing coral (a badge of rank) and strands of coral and plaited hair at sides, 11½ in. high 100 grms
- 32 A CAST OF A HUMAN HEAD, with negroid features, three tribal marks over each eye, with reticulated head-dress with feathers at sides, deep coral choker, and curious branches curved in front of the eyes, projecting base with heads of oxen, reclining leopards, etc., in relief, 15½ in. high 100 grms
- 33 A CAST OF A HUMAN HEAD, with negroid features, and four tribal marks over each eye, the head-dress tapering and reticulated with pendant strands of coral and rosettes at sides, coral choker, and projecting base with guilloche design, 17½ in. high 220 grms





LOT 38

34 A CAST OF A HUMAN HEAD, with negroid features, three tribal marks over each eye, reticulated head-dress with rosettes and strands of coral at sides, with coral choker, the projecting base of guilloche pattern and heads of oxen, leopards, etc., in relief,  $11\frac{1}{2}$  in. high 100 gms

35 A SIMILAR CAST OF A HUMAN HEAD, with tattoo marks under the eyes, and projecting base with leopards, and heads of oxen in relief,  $13\frac{1}{4}$  in. high 120 gms.

36 A SIMILAR CAST OF A HUMAN HEAD, with three tribal marks over the eyes, and tattoo marks beneath, the projecting base with frogs, heads of oxen and leopards in relief,  $13\frac{1}{4}$  in. high 145 gms.

37 A SIMILAR CAST OF A HUMAN HEAD, with three tribal marks over the eyes, and coral choker and strands at sides,  $11\frac{1}{4}$  in. high 150 gms.

60, 38 | A VERY FINE CAST OF A HUMAN HEAD WITH NEGROID FEATURES, THREE TRIBAL MARKS OVER EACH EYE, WITH RETICULATED HEAD-DRESS WITH FEATHERS AT SIDES, DEEP CORAL CHOKER AND CURIOUS BRANCHES CURVED IN FRONT OF THE EYES; PROJECTING BASE WITH LEOPARDS, HUMAN HEADS AND ARMS, FROGS AND FISH IN RELIEF, 21 in. high 240 gms

(See Illustration).

40, 39 | A PLAQUE, CAST IN RELIEF WITH A SINGLE FIGURE OF AN EXECUTIONER, his hair in conventional bands with feather at side, and cross belt and skirt looped at the side, an amulet is suspended from his neck, and his left hand carries a wand of office, and his sword at his side; the background has six rosettes in relief and is engraved with quatrefoil design and stippled,  $13\frac{3}{4}$  in. wide, 20 in. high, in fine preservation 100 gms  
leary

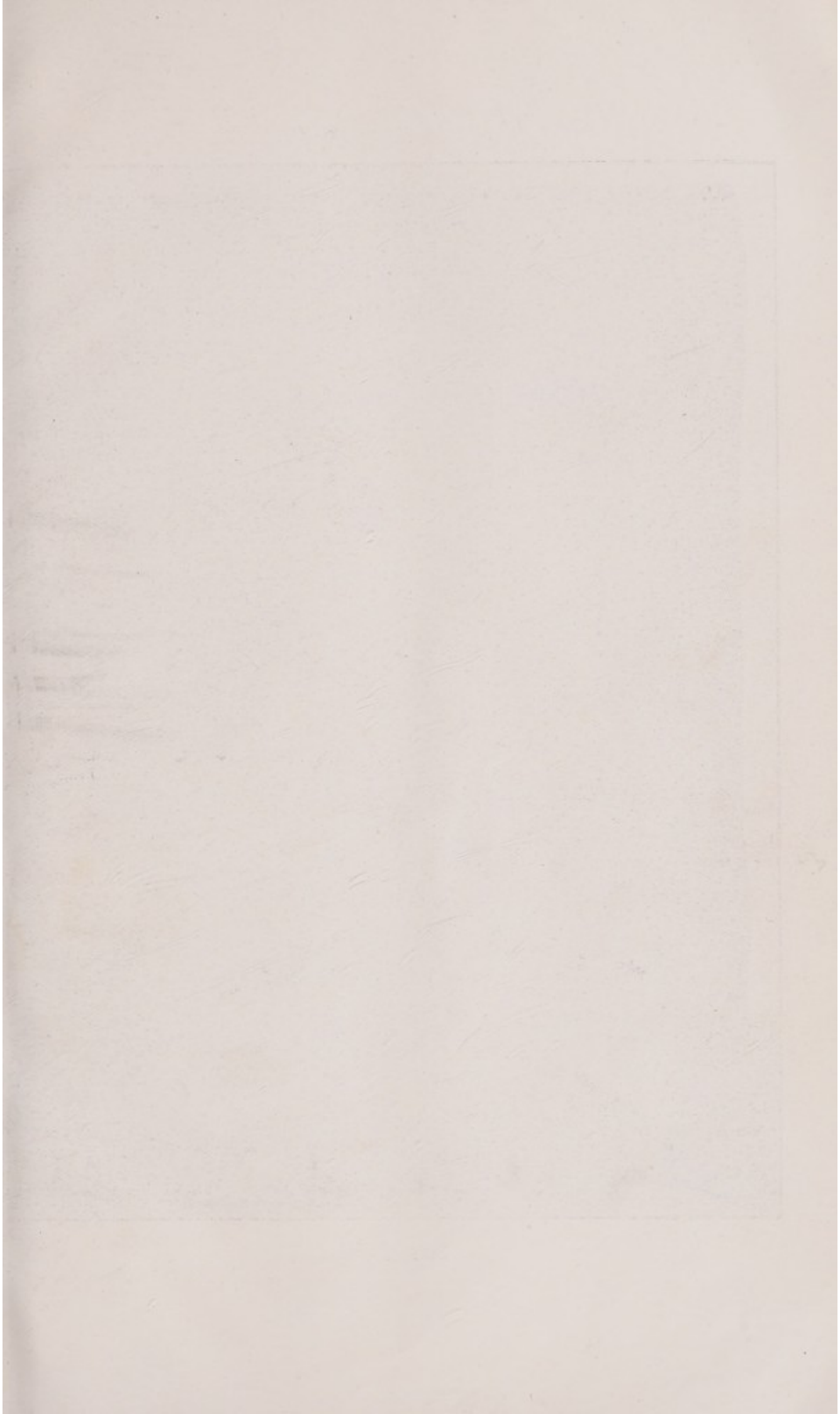
40. 40 | A PLAQUE, CAST IN RELIEF WITH TWO FIGURES OF BENIN WARRIORS, in full dress with coral head-dress and chokers, their right hands brandish broad bladed swords, and shields in their left hands; the background stippled and engraved with trefoil ornament, 13in. wide, 15½in. high 95 gms

40. 41 | A PLAQUE, CAST IN RELIEF WITH A SINGLE FIGURE OF A WITCH DOCTOR with curious tapered head-dress, and coral choker, attired in a long close-fitting robe, engraved to represent embroidery, his right hand holds a wand, and his left rests on his chest, stippled and engraved background, 7in. wide, 19in. high 40 gms

42 | A PLAQUE, CAST IN RELIEF WITH TWO FIGURES OF NAKED BOYS, their hair dressed in conventional bands, one tribal mark over each eye, coral chokers and bracelets; each carries on his shoulder a young leopard; the background stippled and engraved with quatrefoil ornament, and three rosettes in relief, 12in. wide, 18in. high 105 gms

80 gms 100. 43 | AN AEGIS, CAST IN RELIEF WITH THREE FIGURES OF WITCH DOCTORS, clasping hands, with curious tapered head-dresses, and coral chokers; the centre figure semi-human with legs formed as two cat-fish, and base with alligators, snake, etc., in relief and border of guilloche pattern, 16in. high, 13in. wide

44 | A PLAQUE, CAST IN RELIEF WITH A FIGURE OF A WARRIOR, with high helmet, somewhat in the form of a Grenadier cap, with a feather at the side, coral choker and necklace of leopards' teeth; his right hand wields a broad-bladed sword, and a looped skirt and girdle round the waist with two pouches at side with Maltese cross design, 7in. wide, 17in. high 55 gms  
carry





LOT 48

30. 45 | A PLAQUE, CAST IN RELIEF WITH TWO FIGURES OF A WARRIOR AND ATTENDANT, the warrior with peculiarly ornamented head-dress, coral choker and leopards' teeth necklace, his right hand bears a broad-bladed sword; he wears an ornamented skirt and a young leopard is hung at his side; the attendant holds a crescent shaped trophy before him, 12in. wide, 16½in. high, damaged 60 gms.
- 46 | A plaque, cast in a single figure with coral head-dress and choker, wearing a skirt looped at one side, and holding a wand in right hand; the background engraved and with horse's head in relief, 11in. wide, 16in. high, damaged 35 gms.
- 47 | A PLAQUE, CAST IN RELIEF WITH TWO FIGURES OF WARRIORS IN FULL DRESS with feathered head-dresses and trefoil leaf tops, wearing necklaces of leopards' teeth and bells hanging from their necks; one carries a cylindrical shaped vase on his shoulder, and the other holding the pommel of his sword, stippled background with incised quatrefoil ornament, 13in. wide, 18½in. high 155 gms.
100. 48 | A FINE PLAQUE, CAST IN RELIEF WITH THREE FIGURES OF PRINCES, THEIR HAIR DRESSED IN CONVENTIONAL BANDS, ONE WITH FEATHER AND CORAL CHOKER; THEY WEAR ORNAMENTED SKIRTS, LOOPED TO ONE SIDE WITH A GIRDLE WITH HANGING TASSELS, STIPPLED AND INCISED BACKGROUND, 14½in. wide, 19½in. high, in fine preservation 300 gms.  
(See Illustration).
- 49 | A plaque, cast in relief with a single figure of a witch doctor with tapered head-dress and coral choker, attired in a long close fitting robe, and holding a wand in each hand, 8in. wide, 18in. high, damaged 45 gms.
500. 50 | A VERY FINE PAIR OF MASSIVE BRONZE FIGURES OF LEOPARDS, INCISED IN CIRCLES ON A STIPPLED GROUND, 20in. high, in perfect preservation 450 gms.  
(See Illustration).



30. 51 A fragment of a plaque, cast in relief with a figure of an ibis holding a snake in its beak and an antelope's head, and two rosettes, *mounted on wood, 15in. wide, 21in. high* 105 gms
- 52 A fragment of a plaque, cast in relief with a figure of a witch doctor, with tapered head-dress and holding a ball in front of him, *13in. high, 6½in. wide* 24 gms  
Carrus
- 53 A fragment of a plaque, cast in relief in a figure of a warrior, with coral choker and necklace of leopards' teeth, and brandishing a broad bladed sword in his right hand, background incised and stippled and with crescent moon in relief, *12in. high, 11in. wide* 31 gms
- 54 A PLAQUE, CAST IN RELIEF WITH FOUR HEADS OF LEOPARDS, and two rosettes, the background engraved with quatrefoil decoration and stippled, *7in. wide, 17in. high* 66 gms
- 55 AN AEGIS, CAST IN RELIEF WITH TWO FIGURES, POSSIBLY EUROPEANS, with pot helmets and long straight combed hair, each holding a helmet before them and a dish between them, wearing pleated skirts and buttoned tunics, *13in. high, 10in. wide* 45 gms
- 56 A VERY FINE GROUP OF NINE FIGURES IN A PROCESSION, representing the chief with eight male and female attendants; the chief clasping the hands of two attendants, and wearing a high-tapered head-dress, and sheltered by two shields, upheld by attendants, on square-shaped base with guilloche design and horse and ox heads and human arms in relief, *10in. wide, 12in. deep and 13½in. high, in fine preservation* 85 gms  
84 gms  
60.
- 57 A MACE surmounted by a figure of an ibis with outstretched wings, and partly pierced handle, *15in. high* 10½ gms  
Rapp
- 58 A SMALL MASK, formed as a human face with pierced head-dress ornamented with rosettes, three tribal marks over each eye, and frilled collar, *7½in. high* 26 gms



LOT 50



- 59 A small mask, with three pointed head-dress and frilled collar, 7in. high 14 gms.
- 60 A small mask, with similar head-dress and spiral strands of hair at sides, and ornamented collar, 5½in. high 6½ gms.
- 61 A group of two leopards with dead antelope, and a figure of a man with pot helmet and holding a staff in his right hand, on square shaped base (which originally had six other figures, since broken off) with guilloche design and ox heads in relief, 9½in. wide, 11½in. deep. 34 gms.
60. 62 A CIRCULAR JU-JU STAND, surmounted by two figures of elephants with leopards and alligators and fish in relief, the sides with guilloche decoration, and heads of oxen, antelopes, birds, etc., in relief, 13in. diam. 130 gms.
- 63 A CURIOUS EQUESTRIAN GROUP, probably a Portugese missionary, bearded and wearing a broad-brimmed hat, carrying a whip in his right hand, on horseback, with plaited bridle in his left hand, 7¾in. high 13 gms.
40. 64 A heavy mace, formed with the figure of a warrior with leopards, holding a human headed snake in his right hand, the handle with snakes and alligators in relief, 19in. high 45 gms.
- 65 A sacrificial cup, with 2 horizontal bands of guilloche pattern, 7½in. high 30 gms.
- 66 A plain sacrificial cup and cover, the rim with band of ribbon design, 15in. high 18 gms.
- 67 A sacrificial bowl, engraved with band of guilloche pattern, 6¾in. high 16 gms.
20. 68 A SACRIFICIAL KNIFE, the blade pierced and engraved in rings, and the handle surmounted by a European head, wearing a crown surmounted by a Maltese Cross, 10½in. long 28 gms.

- 69 A pair of engraved stirrups, with leather thongs 2/10/-
- 70 A pair of 5in. figures of birds forming bottles and covers, incised 11/10/-
- 71 Another, 9in. high, and 3 vases 10/10/-
- 72 A 9in. bronze bowl, engraved, 2 others, and another with cover and swing handle
- 2/10/0 15. (72A) A miniature equestrian group—Warrior on horseback, with long-bladed sword, holding in his left hand the decapitated head of an enemy, 3in. high, attenuated and rudely cast ~~4~~
- 73 A curious miniature group—Leopard attacking a native, who holds a flint lock gun, 1 $\frac{3}{4}$ in. high 2/-/-  
Stone
- 74 Another 2—Man with chicken, and a bearer with load on his head, 2 $\frac{3}{4}$ in. and 2in. high 2/-/-  
Furber
- 75 Another 2—Man seated on a stool, and a kneeling figure of a woman, 1 $\frac{3}{4}$ in. and 2in. high 1/16/-
- 76 Another—A double figure, man and antelope, and 1 other 2/5/-  
Braithwaite
- 77 Another—An elephant, and 3 others 1/15/-
- 78 Another of a tortoise, and 3 models of chieftains' stools 1/5/-

## A COLLECTION OF GOLD DUST BOXES.

- 79 A small box and cover for collecting gold dust, with birds and snake and floral and zig-zag design in low relief, 3 $\frac{3}{4}$ in. wide 2/10/-
- 80 Another, with 16 figures of birds on the lid, 3 $\frac{3}{4}$ in. wide 1/1/-  
McKellar
- 81 Another, with 12 figures of birds on the lid, 3 $\frac{1}{4}$ in. wide 1/15/-  
Kelly

- 82 Another, with 10 figures of birds, and another with 6 figures of birds on the lids
- 83 Another, with figure of an alligator on the lid, and 2 others with birds
- 84 Another, with scroll design on the lid, 4in. wide, and 2 others, smaller
- 85 Another 4 2/14/6
- 86 Another 4 2/5/-
- 87 Another 4 2/5/-
- 88 Another 4 3/-/-
- 89 Another 4 2/-/-
- 90 Another 4 1/10/-
- 91 Another 4 1/10/-
- 92 Another 5 2/5/-
- 93 Another 2, semi-circular, and 4 others 32/- Kelly

2/5/-  
Kelly2/4/-  
Barry

2/5/-

## IVORIES.

The following Two Lots were apparently the Gods in the Ju-Ju houses.

30. 94 | A FINE OLD IVORY TUSK, THE WHOLE CARVED IN  
NUMEROUS FIGURES OF CHIEFS AND WARRIORS, ETC.,  
5ft. 7in. long

120 gms

95 ANOTHER, THE WHOLE CARVED IN NUMEROUS FIGURES  
OF WARRIORS, BOYS, FISH, BIRDS AND ANIMALS,  
5ft. 7in. long

120 gms

- 96 A TUSK, carved in 5 bands of interlaced strapwork, 6ft. 3in. long 20 qms
- 97 A Tusk, carved in 3 bands of interlaced strapwork, 3ft. 4in. long 8 qms
15. 98 A Tusk, spirally carved, with numerous figures in a procession, 3ft. 7in. long 28 qms
- 99 Another, similarly carved, 23in. long 10/10/-
- 100 An old brown ivory tusk, silver mounted as a walking stick 3/5/-
- 101 An old ivory tusk war horn with mouthpiece on convex side 1/5/-
- 102 Another 15/-
- 103 Another 10/-
- 104 Ten ivory tusks and fragments 10/-
- 105 An ivory war horn, incised in rings, 5ft. 3in. long 12/12/-

## CURIOS, ETC.

- 106 A carved wood box and cover in form of a leopard's head studded with brass, 7in. long 8/18/6
- 107 Two native short swords, in leather scabbards, a leather quiver, and a powder horn 6/-
- 108 A native bark shield, and a short sword 1/1/-
- 109 A case containing 14 Brazilian and Mexican silver coins, dating from 1696 to 1820, sent by Benhanzin, King of Dahomey, to G. W. Neville, 1892 5/5/-
- 110 An oxen horn and a bottle, both covered in native leather work 5/-  
Jones

- 111 A stuffed turtle, and a narwhal "sword" 1/10/- Fuller
- 112 A native bronze headed spear, 2 others, and a narrow wood shield 10/-
- 113 A pair of Japanese bronze bowls and 1 cover, with birds and flowers in low relief, 1in. high 55/-
- 114 A pair of antelope horns, 3 pairs of native leather slippers, a pouch, and a stick formed from an antelope horn } 35/-
- 115 A coconut cup and cover, bronze mounted to represent a head of a native, 9in. high, and 2 Soudanese brass dishes, 12in. diam. }
- 116 A pair of Soudanese brass deep dishes, engraved, 14in. diam., and 8 pieces of native straw-work 18/- Morris
- 117 A pair of Soudanese brass deep dishes, 18in. diam., and a dish, engraved in fish, etc., 18½in. diam. 1/1/- Morris
- 118 A Japanese gilt bronze circular plaque, overlaid in storks, paeonies, etc., 25in. diam. 1/15/-
- 119 Two human teeth necklaces and 6 native pottery vases and jugs 1/-/- Stone
- 120 Two curious bronze mounted sacrificial axes, and a leather quiver of arrows 15/- 30
- 121 A brass wine ewer and cover with curved spout, 12in. high, and 2 others 10/6
- 122 A brass jar, repousse in Egyptian figures, animals, etc., 10in. high 8/-
- 123 Two brass circular boxes and covers, repousse, and another smaller } 5/-
- 124 A brass pail with swing handle and cover, repousse, a large vase, and another, 9in. high } Richardson



- 125 A carved wood mace, carved in a double head of a native, 3/15/-  
and a native leather pouch, with disc ornament
- 126 A rosewood caddy and cover, and 13 other pieces, various 3/10/-
- 127 Two flint-lock guns and another 10/- Richardson
- 128 A carved mahogany specimen table. Not included
- 129 Tusk Sir Walter Cowan's  
Property: large, ivory, curved  
Benin. 140 gms.  
No name
130. Property Col. R. J. F. Taylor, Benin  
Capt. Bronze Head. 380 gms  
No name
- 131 As above, } Property Col Taylor  
smaller. } 200 gms  
No name

FINIS.

