

Sales catalogue: Robinson Fisher and Co

Publication/Creation

4th November 1920

Persistent URL

<https://wellcomecollection.org/works/p6chk2hf>

License and attribution

This work has been identified as being free of known restrictions under copyright law, including all related and neighbouring rights and is being made available under the Creative Commons, Public Domain Mark.

You can copy, modify, distribute and perform the work, even for commercial purposes, without asking permission.



Wellcome Collection
183 Euston Road
London NW1 2BE UK
T +44 (0)20 7611 8722
E library@wellcomecollection.org
<https://wellcomecollection.org>

Original
TELEPHONE—Gerrard 4725.

Original
Stow
4/11/20
Entered
(S) 4H
SALE No. 5,798.

WILLIS'S ROOMS.

KING STREET, ST. JAMES'S SQUARE, S.W. 1.

WAF/mm/cm/sal/18/328

A Catalogue of
A COLLECTION OF
Pictures & Drawings

The Property of Captain Templer and removed from The Manor House, Paignton, Devonshire; and from various other sources.

Which will be Sold by Auction by Messrs.

ROBINSON, FISHER & HARDING

F. A. HARDING, L. C. ROBINSON and R. H. HURLBATT,

AT THEIR GALLERIES, AS ABOVE,

On Thursday, November 4th, 1920,

AT ONE O'CLOCK PRECISELY.

May be viewed three days prior, and Catalogues had of the Auctioneers, at their Offices,

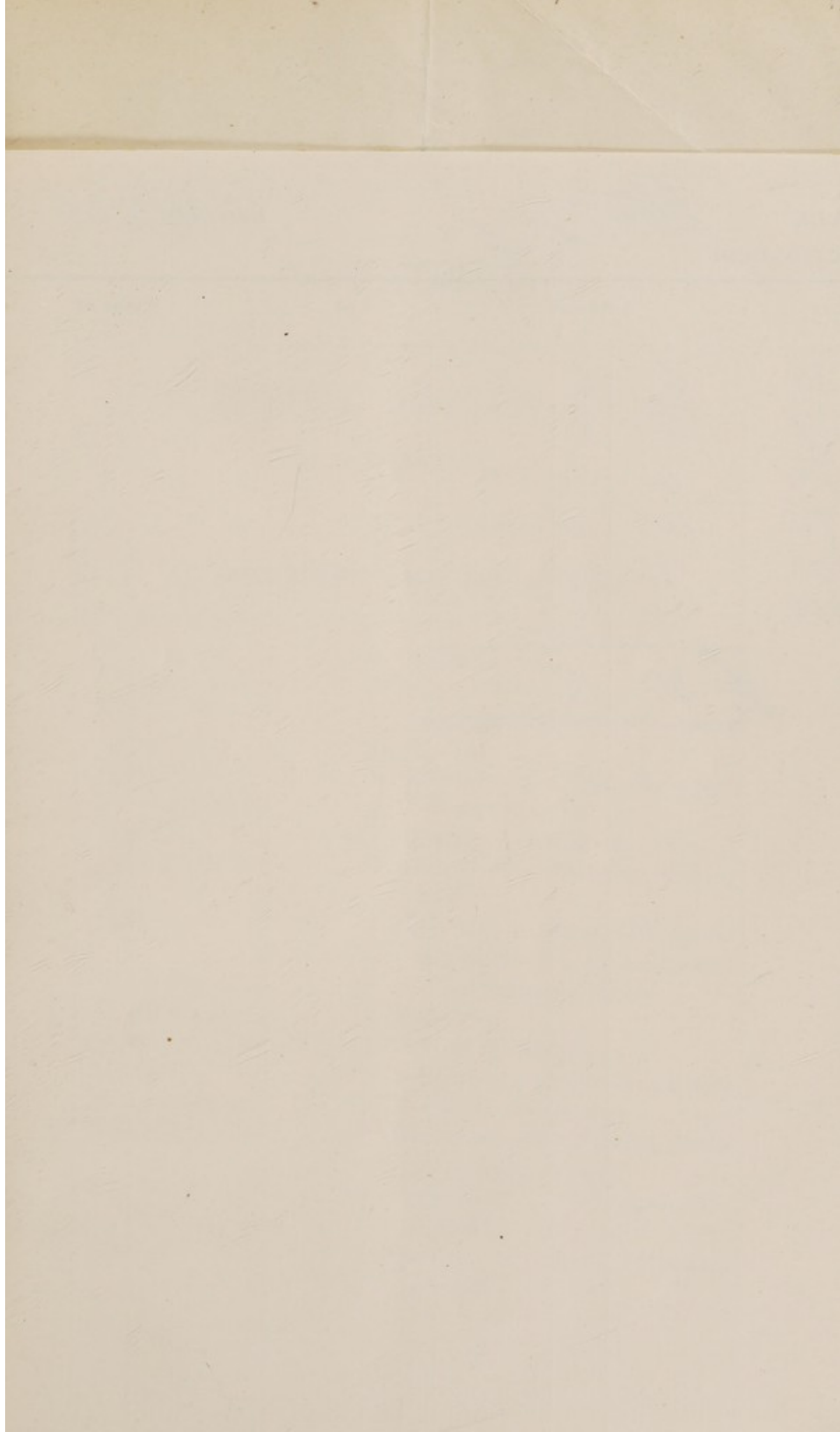
WILLIS'S ROOMS, KING STREET, ST. JAMES'S SQUARE, S.W. 1.

Doherty & Co., Printers, 6, Great Newport Street, W.C. 2. Telephone Gerrard 3639.

CONDITIONS OF SALE.

- I. The highest bidder to be the Buyer; and if any dispute arise between two or more bidders, the Lot so in dispute shall be immediately put up again and re-sold, subject to the discretion of the Auctioneer.
- II. No person to advance less than 1s.; above Five Pounds, 5s.; and so on in proportion.
- III. In the case of Lots upon which there is a reserve, the Auctioneer shall have the right to bid on behalf of the Seller, and right is reserved on behalf of all Vendors to bid by themselves or their Agents.
- IV. The Purchasers to give in their Names and Places of Abode, and to pay down 5s. in the Pound, or more, in part of payment, or the whole of the Purchase-Money, *if required*; in default of which, the Lot or Lots so purchased to be immediately put up again and re-sold.
- V. The Lots to be taken away and paid for, whether genuine and authentic or not, with all faults and errors of description, at the Buyer's expense and risk, the day after the Sale; neither Messrs. ROBINSON, FISHER & HARDING or the Sellers being responsible for the correct description, genuineness, or authenticity of, or any fault or defect in, any Lot; and making no warranty whatever.
- VI. To prevent inaccuracy in delivery, and inconvenience in the settlement of the Purchases, no Lot can on any account be removed during the time of Sale; and the remainder of the Purchase-Money must absolutely be paid on the delivery.
- VII. Upon failure of complying with the above Conditions, the Money deposited in part of payment shall be forfeited; all Lots uncleared within the time aforesaid shall be re-sold by public or private Sale, and the deficiency (if any) attending such re-sale shall be made good by the defaulter at this Sale.

NOTE.—MESSRS. ROBINSON, FISHER & HARDING will not be responsible for any Lot that may be left either by Vendors or Purchasers more than two days from the day of Sale, and any Lot left after that time will be subject to a charge for warehouse room of 1s. per Lot per day.



BUYER

Howe R & F

Date

4/11/20

AUCTIONEERS

Lot	Amount			Lot	Amount		
	£	s.	d.		£	s.	d.
38	6	6	.				
39	4	4	.				
74	4	10	.				
76	10	10	.				
102	2	.	.				
118	3	5	.				
<hr/>							
£ 30 15 .							
<hr/>							

CATALOGUE.

On THURSDAY, NOVEMBER 4th, 1920,

At ONE o'clock precisely.

PICTURES AND DRAWINGS.

<i>By or attributed to</i>	LOT	<i>Subject.</i>
CHANTRELLE . . .	1	A Garden Scene
OLIVER STOCKMAN . . .	2	Figure Subjects, a pair
ENGLISH SCHOOL . . .	3	Portrait of a Lady
UNKNOWN	4	Still Life
V. DE VILLE	5	Morning on the Cotswolds, a pair
ENGLISH SCHOOL . . .	6	Portrait of Lord Nelson
WISSING	7	Portrait of Sir William Benson
SPANISH SCHOOL . . .	8	Portrait of a Nobleman wearing Ruff
GUARDI	9	A Ruined Archway, with figures and buildings in the background
DUTCH SCHOOL	10	A Coast Scene with figures
DUTCH SCHOOL	11	Still Life
NASMYTH	12	A Wooded Landscape
BOUCHER	13	A Figure of a Lady holding a Rose
ITALIAN SCHOOL . . .	14	The Deposition, on slate
BENARES	15	Landscapes, with Figures, Portu- guese Scenes, a pair
VAN DYCK	16	Portrait of a Gentleman, un- framed
AMICONI	17	Portrait of Henry Worsley, $\frac{3}{4}$ -length

<i>By or attributed to</i>	<i>LOT</i>	<i>Subject.</i>
HARLOW . . .	18	Portrait of Lady Byron, in a white Dress, seated
WOOTON . . .	19	Prince Charles at Culloden
GAINSBOROUGH . . .	20	Portrait of a Divine
WOUVERMANS . . .	21	A Camp Scene, with Figures
J. WELLS CHAMPNEY . . .	22	A Girl and a Dove in a Landscape
PARMIGIANO . . .	23	Salomé Presenting the Head of John the Baptist to Herod and Herodias
ROSALBA . . .	24	Portrait of a Lady, oval
ITALIAN SCHOOL . . .	25	A Female Saint
W. F. BROWN . . .	26	On the Lagoons
FRENCH SCHOOL . . .	27	A Figure Subject, on panel
ENGLISH SCHOOL . . .	28	Portrait of a Lady, oval
DUTCH SCHOOL . . .	29	The Interior of a Cathedral, with Figures
FRENCH SCHOOL . . .	30	Portrait of a Girl
SCHALKEN . . .	31	A Man with a Lighted Ember
OSTADE . . .	32	An Interior, with two Men
RIBERA . . .	33	Portrait of an Old Man
G. MORLAND . . .	34	"Washing Day"
KNELLER . . .	35	Portrait of a Nobleman wearing Robes and Decorations
M. DAHL . . .	36	Portrait of Sir Robert Cartell, of Deptford
M. DAHL . . .	37	Portrait of Lady Cartell
680 8. W. WYCKE . . .	38	"The Chymist" same place
480 5. HOPKINS . . .	39	Portrait of Dr. Deluc left screen inner side
6. UNKNOWN . . .	40	Consultation of Physicians at Merton College left " 7/10/07
ROMNEY . . .	41	Portrait of a Lady in a pink Dress
VANDYCK . . .	42	A Pilgrim, with Staff and Wreath
VAN SOMER . . .	43	Portrait of a Gentleman in a Ruff, $\frac{3}{4}$ -length
GILLOT . . .	44	Figures Masquerading

<i>By or attributed to</i>	LOT	<i>Subject.</i>
SIR M. ARCHER SHEE	45	Portrait of Lord Abinger, $\frac{3}{4}$ -length
SIENESE SCHOOL . . .	46	The Madonna and Child, on panel
FLORENTINE SCHOOL . .	47	The Madonna and Child, gold background, on panel
OLD FRANCKS	48	An Historical Subject
	49	
DUTCH SCHOOL	50	A Landscape, with Trees, Figures, and Goats
LANCRET	51	The Piping Boy
DUTCH SCHOOL	52	Portraits of a Lady and Gentle- man, on panels, a pair
DUTCH SCHOOL	53	The Young Sculptor
C. HEDA	54	A Basket of Grapes on a Table
ITALIAN SCHOOL	55	The Martyrdom of St. Sebastian, on panel
FRENCH SCHOOL	56	A Landscape, with Stream and Mill

The Property of a Lady.

J. BINET	57	A Moorland Scene, with a Sheep Farm
L. NEUBERT	58	The Seashore
AUGUSTE BRASCH	59	A Market Woman
S. DAHL	60	An Interior, with Dogs on a Chair
ENGLISH SCHOOL	61	Old Portsmouth Harbour
A. ANDREWS	62	A River Scene, with Figures

Various Properties.

J. B. GREUZE	63	Portrait of a Lady <i>From the Ashbridge Hall Col- lection</i>
------------------------	----	---

<i>By or attributed to</i>	<i>LOT</i>	<i>Subject.</i>
VAN HUYSUM . . .	64	Still Life
KNELLER . . .	65	Portrait of a Gentleman, oval
LELY . . .	66	Portrait of Sir Isaac Newton
ROSALBA . . .	67	A Portrait of a Lady, pastel
VAN DYCK . . .	68	A Study for the Portrait of the Duc d'Epéron
		<i>From the Earl of Dartrey's Collection</i>
DUTCH SCHOOL . . .	69	Portrait of a Lady
BASSANO . . .	70	"Dives and Lazarus"
UNKNOWN . . .	71	Portrait of a Lady
ITALIAN SCHOOL . . .	72	A Broken Bridge, with Figures
A. STORCK . . .	73	A Harbour Scene, with Boats and Figures
6. JANSSENS . . .	74	Portrait of a Man in lace Collar
A. PALAMEDES . . .	75	Figures seated at a Table, on panel
25. G. DOW . . .	76	The Alchemist
G. TERBURG . . .	77	Portrait of a Lady, seated
C. HENDERSON . . .	78	Chester Royal Mail
C. HENDERSON . . .	79	Coaching
POLLARD . . .	80	Fox Hunting, a pair
WOLSTENHOLME . . .	81	The Meet
SARTORIUS . . .	82	The Kill
ECKHOUT . . .	83	Christ before Pilate
VAN DER DOES . . .	84	A Landscape, with Peasants and Sheep
KNELLER . . .	85	Portrait of Elizabeth, daughter of David Lambert, of Perrott
STONE . . .	86	Portrait of Archbishop Land, ¾-length
J. S. COPLEY . . .	87	Portrait of a Lady with a Child, seated
VAN OSTADE . . .	88	The Exterior of an Inn, with Figures, Waggons, and Horses, on panel

no 22

*on floor
of window
7 figures*

358

Figure of a woman

<i>By or attributed to</i>	<i>LOT</i>	<i>Subject.</i>
KNELLER . . .	89	Portrait of Sir William Wyndham
NETSCHER . . .	90	Portrait of a Lady, oval
ENGLISH SCHOOL . . .	91	Portrait of a Lady

The Property of a Lady.

DENNER . . .	92	A Man, seated at a Table, with Glasses in his Hand and Coins on a Table
DOBSON . . .	93	Portrait of a Gentleman with long white Hair
STEENWICK . . .	94	The Exterior of a Mansion, with Figures
C. ROTTMAN . . .	95	A Coast Scene

Various Properties.

ALKEN . . .	96	Coaching
POLLARD . . .	97	Fishing
GRIGNION . . .	98	Portrait of Captain Farmer
CONSTABLE . . .	99	Barnes Common
LADY DIANA BEAU-		
CLERC . . .	100	Cupid at Play
GIRTIN . . .	101	Eton College, water-colour
WESTALL . . .	102	Regent's Park, ditto
PESNE . . .	103	Portrait of Somerville, author of "The Chase"
BRECKLENKAMP . . .	104	The Exterior of a Cottage, with Peasants
COYPEL . . .	105	A Landscape, with numerous Figures
GAINSBOROUGH . . .	106	Portraits of three Children

<i>By or attributed to</i>	<i>LOT</i>	<i>Subject.</i>	
T. GIRTIN	107	A River Scene, with Bridge and Figures, water-colour	580
TURNER	108	A Village Scene, with Figures, ditto	4/-
GASPAR DE CRAYER	109	"Jesus Disputing with the Doctors"	2280
SNYDERS	110	Dogs Hunting Hares, in a landscape	1580
FLEMISH SCHOOL	111	A Prisoner in the Roman Forum, unframed	3/10/-
SIR A. VANDYK	112	Angels Mourning the Dead Christ	
		<i>From the collection of the Earl of Kinnoul at Dupplin Castle</i>	12 1/2 80
P. MOREELSE	113	The Holy Family	1480
FLEMISH SCHOOL	114	A Piéta	6/15/-
ITALIAN SCHOOL	114A	Christ Bound and Christ and His Disciples	32/-

**The Property of Captain TEMPLER, and removed
from the Manor House, Paignton, Devon.**

ROBERT	115	Ruins and Figures, ovals, 3	6/10/-
P. BRILL	116	A Landscape, with Château and Figures, on panel, and A Landscape with Figures, on copper, P. BREUGHEL, 2	880
JAN MIEL	117	A Gipsy Encampment, on panel	30/-
DUTCH SCHOOL	118	A Consultation of Physicians, on panel	10/-
VAN DE VELDE	119	A Naval Engagement, on copper	7 high 2 sh
SPANISH SCHOOL	120	St. Francis adoring the Crucifix, on panel	
VAN GOYEN	121	A Coast Scene, with Boats and Figures selling Fish, on panel	

<i>By or attributed to</i>	LOT	<i>Subject.</i>
VERNET . . .	122	A Coast Scene, with Shipping, and Figures
ENGLISH SCHOOL . . .	123	Views of Rome and Avignon, a pair
BREUGHEL . . .	124	A Rocky Landscape, with Buildings, Figures and Animals, on panel
NORTHCOTE . . .	125	Portrait of J. Paulby, Esq., in blue Coat and Wig
FRENCH SCHOOL . . .	126	An Allegorical Subject and A Landscape, on copper, UNKNOWN, 2
BLAKE . . .	127	Dead Hares, 2
DUTCH SCHOOL . . .	128	A Rocky Landscape, with Shepherd driving Cattle
GRIEFF . . .	129	Dead Game, a pair
WYNANTS . . .	130	A Landscape and River Scene, with Equestrian Figures on a Road
F. BEACH, 1793 . . .	131	Portrait of a Gentleman, in green Coat and white Cravat, powdered Hair, in a painted oval
DUTCH SCHOOL . . .	132	A Wooded Landscape, with Farmstead, Bridge, and Figures, on panel
D. SERRES . . .	133	A Naval Engagement
BREUGHEL . . .	134	A View in a Dutch Town, with Canal and numerous Figures, Carts, Horses, &c.
BASSANO . . .	135	The Encampment of the Patriarchs
PIETERS . . .	136	A Fleet at Sea
ARTOIS AND TENIERS .	137	A Wooded Landscape, with Robbers
BUTTERWORTH . . .	138	A Revenue Cutter at Teignmouth
ENGLISH SCHOOL . . .	139	The River Clift, Trestles

<i>By or attributed to</i>	<i>LOT</i>	<i>Subject.</i>
C.D.V.R. . . .	140	An Interior, with Figures and Still Life
VAN DER VELDE . .	141	Shipping
RUBENS	142	The Adoration of the Virgin attended by Saints
143		A carved gilt Frame
144		A ditto
145		A ditto
146		A ditto

Various Properties.

J. C. IBBETSON . .	147	A View of Masham, Yorkshire
W. ASHFORD, 1786 .	148	Powerscourt Waterfall
J. B. PYNE	149	Hebog Mountains
J. B. PYNE	150	A Welsh Bridge
T. WAINWRIGHT . .	151	A Landscape and Cattle
W. P. SHERLOCK . .	152	St. Albans Abbey
S. RICCI	153	Venus and Cupid
PANNINI	154	The Pyramid of Cestius
F. BOL	155	The Family of Darius before Alexander
EL. GRECO	156	St. Jerome in a Landscape
VAN DE VELDE . . .	157	Figures in a Landscape
W. HAVEL	158	Dungeon Ghyll
W. ANDERSON . . .	159	A Coast Scene
B. BARKER	160	A Landscape
RATHBONE AND MOR-		
LAND	161	A Landscape and Figures
NASMYTH	162	Loch Vennachair and Bevenue
W. H. CROME	163	A River Scene with Castle, Moon-light
DE HOOGE	164	An Interior and Figures

<i>By or attributed to</i>	LOT	<i>Subject.</i>
LANCRET	165	Figures in a Garden, unframed
166		Three large gilt Frames
167		Two ditto

FINIS.

6p
29 OCT 20
E. 15
LONDON S.M.I.

WILLIS'S ROOMS,
KING STREET, ST. JAMES'S SQUARE, S.W. 1.

MESSRS.

ROBINSON, FISHER & HARDING

HOLD

Sales by Auction every Week

OF

PICTURES and DRAWINGS,

OLD ENGLISH AND FRENCH FURNITURE,

MUSICAL INSTRUMENTS, DECORATIVE CHINA.

LACE, BRONZES, PLATE AND PLATED ARTICLES,

LIBRARIES OF BOOKS, WINES, CIGARS.

AND OTHER VALUABLE PROPERTY.

Arrangements can be made to receive and sell same at
early dates.

Messrs. ROBINSON, FISHER & HARDING will be pleased to attend by
appointment in the Country or elsewhere and advise as to best methods
of realisation.

PROBATE AND OTHER VALUATIONS.

15 PM
OCT 20
BON S.M.I.