

## **Sales catalogue: Bonham & Sons**

### **Publication/Creation**

19 March 1920

### **Persistent URL**

<https://wellcomecollection.org/works/gyuhszzy>

### **License and attribution**

This work has been identified as being free of known restrictions under copyright law, including all related and neighbouring rights and is being made available under the Creative Commons, Public Domain Mark.

You can copy, modify, distribute and perform the work, even for commercial purposes, without asking permission.



Wellcome Collection  
183 Euston Road  
London NW1 2BE UK  
T +44 (0)20 7611 8722  
E [library@wellcomecollection.org](mailto:library@wellcomecollection.org)  
<https://wellcomecollection.org>

TELEPHONE—MUSEUM 1150.

Sale No. 10,181.

**65, OXFORD STREET, W.**

OPPOSITE RATHBONE PLACE.

and 10, SOHO SQUARE, W.

ALFRED BONHAM.

CHARLES BONHAM.

**FRIDAY EVENING'S SALE.**

A CATALOGUE  
OF  
**PICTURES**

WATER-COLOR DRAWINGS,  
**CHROMOS & ENGRAVINGS**  
AND OTHER WORKS OF ART.

*Attributed to the most esteemed Artists of the Old and Modern Schools,*

TOGETHER WITH

**CARVED AND OTHER FRAMES, EASELS**  
AND ARTISTIC PROPERTY GENERALLY.

WHICH WILL BE SOLD BY AUCTION, BY MESSRS.

**W. & F. C. BONHAM & SONS**

AT THEIR LARGE GALLERY, 65, OXFORD STREET.

**On FRIDAY EVENING, MARCH 19th, 1920.**

At **FIVE** o'clock to the minute.

May be Viewed until Two o'clock of the day of Sale, and Catalogues had  
at the Galleries 65, OXFORD STREET.

NOTICE.—Messrs. W. & F. C. BONHAM & SONS beg to inform their Customers and the Public that their Sale on Thursdays of Household Furniture, &c., will commence at ELEVEN o'clock punctually. All property intended for Thursday's Periodical Sale must be sent in accompanied by a List not Later than MONDAY otherwise the Goods will not be Sold until the following week.

NOTE.—The Lists for the usual Friday Evening's Sale of Picture must be sent in not later than Six o'clock on TUESDAY Evening.



**NOTICE.**—Clients wishing to make enquiries of the Firm, are respectfully requested to **APPLY DIRECT TO THE OFFICE, and NOT to unauthorized persons who may solicit them on entering their premises.**

---

**CONDITIONS OF SALE.**

---

**FIRST.**—That the highest bidder shall be the purchaser; and if any dispute shall arise between two or more bidders, the lot or lots, shall, at the discretion of the Auctioneer, be put up again; the Auctioneer's decision to be final.

**SECOND.**—No person to advance less than one shilling in the pound at each bidding.

**THIRD.**—The purchasers to give in their names and places of abode, and pay down 25 PER CENT., if required, in part payment of the purchase-money; such deposit to be applicable to all or any of the lots purchased.

**FOURTH.**—In the case of lots upon which there is a reserve, the Auctioneer shall have the right to bid on behalf of the Seller.

**FIFTH.**—The lots to be paid for and taken away, whether genuine and authentic or not, with all faults and errors of every description, at the Buyer's expense, within one day after the sale, the Auctioneers not being responsible for the correct description, genuineness or authenticity of, or any fault or defect in any lot, and making no warranty or guarantee whatever.

**SIXTH.**—Upon failure of complying with the above conditions, the money deposited in part payment shall be forfeited. All lots uncleared within the time aforesaid, shall be re-sold by public or private sale, and the deficiency (if any) attending such re-sale shall be made good by the defaulter at this sale.

**SEVENTH.**—W. & F. C. BONHAM & SONS while taking every reasonable care to protect the respective lots after they are sold, do not hold themselves responsible for any loss or damage that may arise to any such lots after they fall off the hammer the purchaser taking all risks.

**N.B.**—Cheques will not be accepted in payment of Accounts

## NOTICES.

ALL GOODS SENT TO THESE ROOMS ARE CONSIDERED BY THE AUCTIONEERS AS SENT FOR UNRESERVED SALE, AND UNLESS WRITTEN INSTRUCTIONS TO THE CONTRARY ARE LEFT IN THE OFFICE BEFORE THE SALE COMMENCES SUCH PROPERTY WILL BE ABSOLUTELY SOLD WITHOUT ANY RESERVE.

NO VERBAL INSTRUCTIONS WILL IN ANY CASE BE ATTENDED TO AFTER ANY LOT OR LOTS HAVE BEEN OFFERED FOR SALE ONCE AND NOT SOLD, THE AUCTIONEERS REQUIRE THEM TO BE REMOVED, AND SHOULD ANY SUCH LOTS BE LEFT IN THEIR POSSESSION AFTER THE DAY OF SALE THEY WILL NOT IN ANY CASE BE ANSWERABLE FOR ANY DAMAGE, LOSS, OR DETERIORATION, IN ANY SHAPE WHATEVER, AND A CHARGE OF TWO SHILLINGS AND SIXPENCE FOR WAREHOUSE ROOM WILL BE MADE PER WEEK FOR EVERY LOT SO REMAINING, THE AUCTIONEERS RESERVING TO THEMSELVES THE RIGHT OF SELLING ALL OR ANY SUCH UNCLEARED LOTS AT THEIR CONVENIENCE, WITHOUT REGARD TO ANY INSTRUCTIONS THEY MAY HAVE PREVIOUSLY RECEIVED, WRITTEN OR OTHERWISE.

### PAYMENT FOR GOODS SOLD.

Cheques in settlement of accounts are forwarded on the Monday following the Sales, but Clients requiring small accounts paid in cash are requested to attend at the Offices on Saturday, between 11 & 1, or on Monday between 12 & 6.

**SPECIAL NOTICE.**—THE AUCTIONEERS DO NOT HOLD THEMSELVES LIABLE TO PAY FOR ANY LOT OR LOTS KNOCKED DOWN UNTIL THEY HAVE RECEIVED THE MONEY FOR SAME.

---

All Goods left UNCLEARED after this Sale will be  
RESOLD the following week.

---

## A CATALOGUE

FRIDAY EVENING, MARCH 19th, 1920,  
At FIVE o'clock to the Minute.

Attributed to or after,				Subjects
LOT.				
601	..	..	..	A framed painting
602	..	..	..	Four old paintings
603	..	..	..	Four unframed oil paintings
604	..	..	..	An oil painting of a Dog, and 4 Landscapes on panels
605	..	..	..	An oil painting—Sea View, and 4 water-color drawings
606	..	..	..	Four water-color drawings
607	D. EDIE	..	..	Two water-color drawings — Land- scapes, and 2 others;



Attributed to or after	Subjects.
608 ITALIAN SCHOOL	Clever water-color drawing—Interior signed
609 DUTCH SCHOOL	Fishing Boats off the Coast
610 .. .. .	River Scene with Castle, and 3 other paintings, various
611 .. .. .	Duke of Wellington in 2 pictures, and 2 others
612 .. .. .	Six water-color drawings, framed
613 .. .. .	An oval portrait of a Gentleman painting—Figure Subject, and an etching
614 C. FIELDING, &c.	Two water-color drawings—Seascapes framed
615 VERNON ..	A Scotch Lake Scene
616 DUTCH SCHOOL	Pair of panel paintings—Dutch River Views
617 POOLE, RA ..	An English Landscape with Figure at a Stream
618 DUTCH SCHOOL	A highly finished panel—Lady and Cavalier
619 N. POUSSIN ..	Landscape and Figures
620 ZUCCHERRO ..	Portrait of a Man in red coat, on panel
621 S. DAWSON ..	Selling the Pig
622 CRESWICK ..	A Welsh Landscape
623 DUTCH SCHOOL	Head of a Man
624 F. D. PASSMORE	An exhibited oil painting — An Interior and Figures
625 F. R. UNTERGERGER	An important oil painting—View at Amalfi
626 G. CATTERMOLLE, RWS	An original exhibited water-color drawing—Grace before Meat
627 W. SHAYER ..	A clever panel—Figures, &c. on the Sussex Coast, signed
628 B. LEADER ..	View at Grasmere, N.B., River, &c.
629 H. G. GLENDONI, RI	An important oil painting — A Happy Family
630 ITALIAN SCHOOL	A speculative work—The Holy Family in oak frame
631 TITIAN .. ..	Portrait of a Man in Red Coat

Attributed to or after.

Subjects.

- |     |                   |  |
|-----|-------------------|--|
| 632 | FRENCH SCHOOL     | A pastel drawing — Pemona and 3 others                             |
| 633 | .. .. .           | Eight water-color drawings in 6 frames                             |
| 634 | LELY .. ..        | Portrait of a Lady   |
| 635 | DUTCH SCHOOL      | On the Scheldt and 2 others  |
| 636 | SILAS .. ..       | The Wreck  |
| 637 | WRIGHT (of Derby) | The Oyster Girl  |
| 638 | UNKNOWN ..        | Portrait of a Boy  |
| 639 | .. .. .           | An old Italian Coast Scene with Boats and Figures                  |
| 640 | .. .. .           | A Landscape with River in Fore-ground                              |
| 641 | ENGLISH SCHOOL    | Portrait of a Lady   |
| 642 | .. .. .           | Two paintings with Figures in gilt frames                          |
| 643 | .. .. .           | Two paintings—Carisbroke Castle in gilt frames                     |
| 644 | C. STANFIELD, RA  | Eventime on the Norfolk Broads                                     |
| 645 | SCHOOL OF RUBENS  | Figure Subject <i>Lady &amp; Palace</i>                            |
| 646 | A. PARSONS ..     | A water-color drawing—Returning from Work                          |
| 647 | A. MILLOT ..      | The Love Letter  |
| 648 | CARACCI ..        | Portrait of a Lady   |
| 649 | .. . . .          | An old Landscape, on panel, in carved frame                        |
| 650 | .. .. .           | Old Interior with Figures  |
| 651 | FRENCH SCHOOL     | Garden Scene   |
| 652 | N. BERGHEM ..     | A speculative lined painting—Landscape with Horses and Figures     |
| 653 | S. BOUGH, RSA     | A Scotch Coast Scene, Boats, &c. signed                            |
| 654 | S. LUCAS, RA      | A very fine work—Welcoming the Young Prince                        |
| 655 | H. B. KOEK-KOEK   | A fine painting — Off the Dutch Coast, Shipping                    |
| 656 | E. CROFTS, RA     | An important oil painting — An Incident in the Franco-Prussian War |

7/6

BX

6A

b

C



Attributed to or after,			Subjects.
657	.. ..	..	An oil painting—View in India, and a Dog with Child
658	.. ..	..	Portrait of a Gentleman, and a ditto of a Lady
659	WARD ..	..	An oil painting—The Shepherd, and a pair of plaster plaques in black frames
660	.. ..	..	Landscape with Cattle, and a Ditto with Horse
661	H. J. LIVERES..		An original drawing — Belgium. A War Tragedy
662	H. K. FOSTER ..		Landscape in best gilt frame
663	A. E. JACKSON		An exhibited picture — Chrysanthemums and 2 Fruit Studies in oil
664	.. ..	..	An oil painting—Landscape in gilt frame
665	A. OSTADE ..		Interior with Boers on panel
666	P. WOUVERMANN		A Cavalry Skirmish
667	SOLEMACHER ..		A Dutch Market Place
668	C. PALENBERG ..		Classical Landscape with Figures
669	A. TOSSI ..		River Scene with Boat and Figure
670	C. H. MATTLEY		Two water-color drawings in oak frames
671	ENGLISH SCHOOL		A pastel drawing and 3 water-color drawings
672	KING .. ..	..	Two water-color drawings
673	T. FAED, RA ..		A very fine panel—A Scotch Interior with Figures, exhibited
674	T. S. COOPER, RA		An oil painting— Sheep on Moors signed
675	V. COLE, RA ..		An important oil painting—Bringing Home the Flock, near Dorking
676	D. ROBERTS, RA		A very fine painting — View on the Grand Canal, Venice, Boats, &c.
677	B. FOSTER, RWS		A highly finished water-color drawing — The Gardener's Cottage Figures, &c.
678	UNKNOWN ..		A Scotch Loch Scene and 1 other— Winter Landscape

	Attributed to or after.	Subjects.
679	UNKNOWN ..	Portrait of Dr. Dyne, a phys.
680	C. FIELDING, &c.	Three water-color drawings
681	D. COX, &c. ..	Two water-color drawings
682	.. ..	A Woody Landscape and Wild Duck Shooting
683	.. ..	Three oil paintings, 1 in gilt frame
684	.. ..	Two Landscapes
685	.. ..	A Landscape in gilt frame, Horse in a Landscape and a water-color drawing
686	T. B. HARDY, RWS	Water-color drawing—Coast Scene Boats, &c.
687	P. R. MORRIS, RA	Important oil painting—All Ready
688	A. VANDERVELDE	An oil painting—River View, Shipping, signed
689	VAN GOYEN ..	A fine panel—Dutch River, Boats and Figures
690	T. S. COOPER, RA	Clever oil painting—Cattle at a River signed
691	P. DE LASZLO ..	Very fine oil painting—Figure Subject
692	D. ROBERTS, RA	Ditto—On the Grand Canal, Venice Boats, &c.
693	.. ..	A full length Portrait of a Lady in swept frame
694	WOUVERMANN	Battle Scenes, a pair, in gilt frames
695	T. GOODRICH ..	An Indian Battle Scene
696	H. G. MASSEY	Clever water-color drawing—Interior with Figures
697	.. ..	Two clever oil Sketches
698	G. DOUW ..	A panel painting—The Musician
699	G. MORLAND, 1796	A ditto—The Cottage Door, signed
700	VAN GOYEN ..	A highly finished panel—A Dutch River Scene, signed
701	J. CONSTABLE, RA	A View near Bergholt, Essex
702	J. B. GREUZE .	A clever Head of a Girl
703	A. MILLOT ..	Girl with Bouquet of Flowers
704	J. W. CARMICHAEL	Vessels in a Rough Sea
705	W. SHAYER, RA	Beach Scene with Figures Unloading a Cart

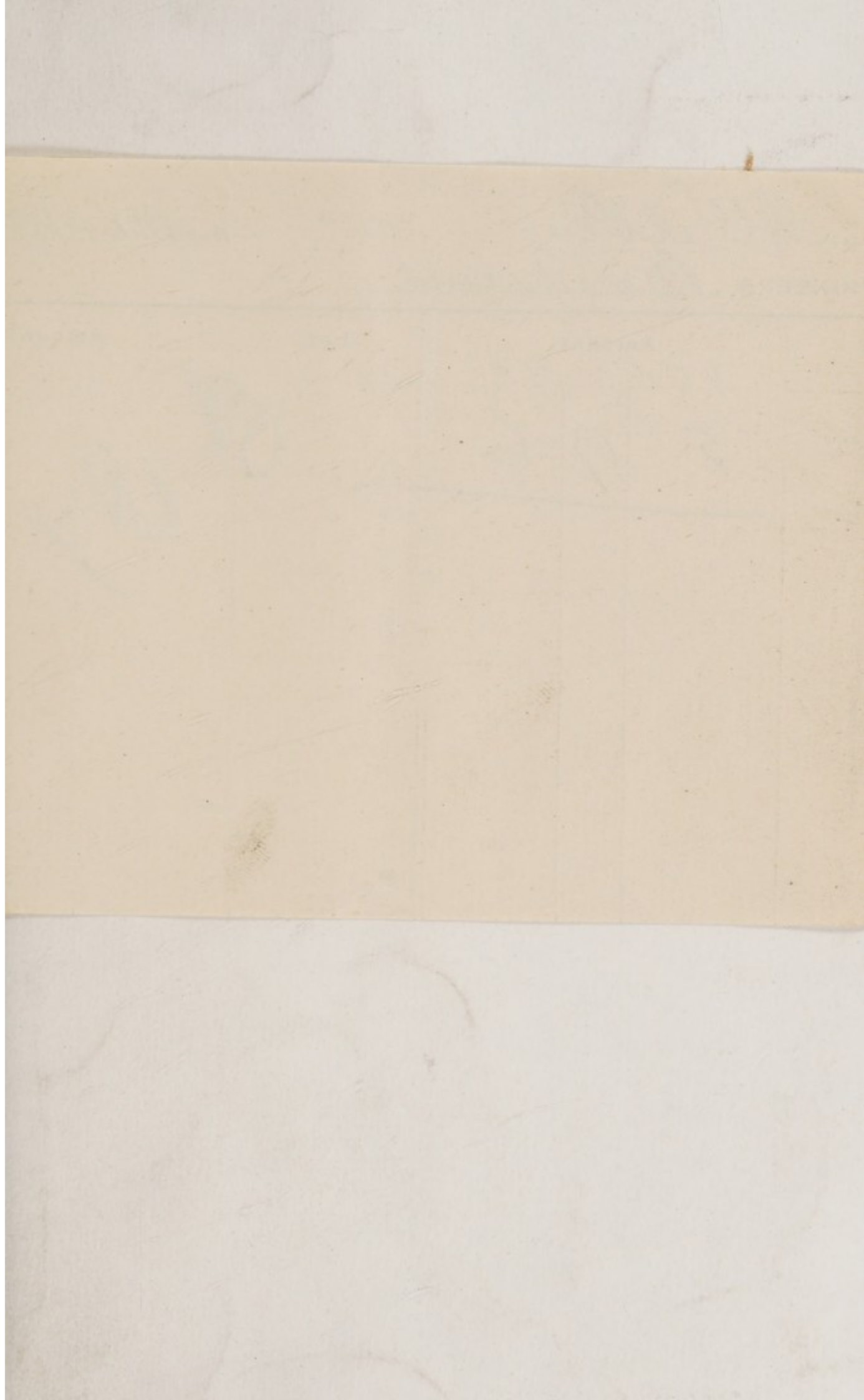


	Attributed to or after.	Subjects.
706	D. COX... ..	A water-color drawing — A Welsh Landscape with Watermill, Figures &c.
707	R. GILBERT, RBA	A water-color drawing—The Lawyer's Table
708	COOPER, RA ..	A gallery work—Group of Cattle in a Landscape
709	SIR H. HERKOMER, RA	A clever oil panel—Figure Subject signed
710	A. WATTEAU ..	A very fine oil painting — French Garden Scene with numerous Figures
711	T. S. COOPER, RA	A clever painting—Landscape, River and Cattle
712	B. LEADER ..	A clever oil painting — A View at Killarney
713	SIR ALMA TADEMA, RA	A fine oil painting—The Pet Bird signed
714	A. VERESTCHAGEN	A very fine panel—An Italian Refreshment Bar, Figures, &c.
715	OLD ENGLISH ..	Lady and Child, unframed
716	ANNIE MARK ..	Kittens and Gold Fish
717	.. .. .	Five oil paintings—Lake Scenes in gilt frames
718	H. FAISELLI, RA	Two paintings — St. George and Dromchino
719	GREUZE... ..	Boy with Apple and 3 others unframed
720	.. .. .	Hunting Party and 2 others, unframed paintings
721	UNKNOWN ..	Figure Subject on panel, Landscape with Windmill and 3 others unframed
722	MURILLO ..	Madonna and Child
723	ITALIAN SCHOOL	Scriptural Subject
724	T. CRESWICK, RA	An oil painting—View in Derbyshire
725	J. WEISS ..	A panel—Landscape and Figure
726	SIR J. REYNOLDS	A fine oil painting—St. John and the Lamb
727	H. G. GLENDONI, RWS	A painting—The Young Mother

Attributed to or after.	Subjects.
728 SIR A. EAST, RA	—An oil painting—View near Wargrave-on-Thames, signed
729 D. ROBERTS, RA	A fine example—Street Scene, Ypres
730 J. F. HERRING	A Day with the Hounds
731 P. R. MORRIS, ARA	A Pleasure Party on a Fishing Boat signed
732 G. MORLAND ..	Exterior of an Inn with Figure signed
733 J. CONSTABLE ..	An old Farm at Hampstead
734 DOMENICHINO ..	A Saint with Sheep, &c.
735 W. HUDSON ..	An English Landscape with Figures &c.
736 L. GARCIA ..	Clever water-color drawing—Flower Piece
737 R. ARNOLD ..	Sweet Seventeen
738 G. ARMFIELD ..	Terriers Ratting, a pair
739 T. EDESON ..	A Friend in Need
740 MULREADY ..	The Flute Player
741 E. T. DAVIES ..	An old water-color drawing—Beechy Head, and an old print—Hastings in 1809
742 .. ..	An oil painting—Dog and Pheasant 2 others, and 3 engravings
743 .. ..	Large unframed engraving, and 1 other in oak frame (glass a.f.)
744 .. ..	Six old varnished prints, and 2 others
745 WILKIE ..	A mezzotint, and a roll of prints
746 BARTOLOZZI ..	Pair of Historical Subjects
747 .. ..	Six water-color drawings, framed
748 .. ..	Set of 4 colored Sporting Prints
749 .. ..	Six small colored Sporting Prints and 2 ditto oil paintings
750 .. ..	Two old colored engravings—Portraits
751 .. ..	A miniature in old brass frame
752 .. ..	A quantity of engravings, &c.
753 .. ..	A number of small engravings in 2 folios
754 .. ..	Two old scrap books



- 755 .. .. Twenty colored pictures on panels  
 756 .. .. Ditto lot  
 757 .. .. Ditto lot  
 758 .. .. Twenty-four ditto  
 759 Carved and gilt fruit and flower pattern frame, 22 by 18  
 760 Carved and gilt oval panel frame, 30 by 25  
 761 Ditto running pattern, 30 by 25  
 762 Ditto, 35 by 25  
 763 Ditto Dutch running pattern frame, 32 by 26  
 764 Ditto swept in oak frame, 40 by 30  
 765 Ditto Florentine frame, 45 by 30  
 766 Ditto Empire frame, 39 by 26 and 1 other acanthus leaf  
      $37\frac{1}{2}$  by  $24\frac{1}{2}$   
 767 A gilt compo swept frame, 34 by  $25\frac{1}{2}$   
 768 A gilt compo fluted hollow, 43 by 34 and 1 other, 24 by  
     19  
 769 A gilt burnished compo French frame, 38 by  $24\frac{1}{2}$   
 770 A gilt compo Dutch leaf pattern frame,  $38\frac{1}{2}$  by 26 and 1  
     other,  $21\frac{1}{2}$  by  $16\frac{1}{2}$   
 771 Ditto swept frame, 37 by 27  
 772 Ditto oak and acorn frame with corners 39 by 29  
 773 Ditto Lawrence centre frame with corners, 38 by 29  
 774 Ditto leaf pattern frame, 41 by 33  
 775 Ditto Carlo frame, 19 by  $14\frac{1}{2}$  and a fluted hollow frame  
     19 by 14  
 776 Ditto Watt's pattern frame, 29 by  $11\frac{1}{2}$  and 3 others  
     various  
 777 Ditto double swept frame, 28 by 17 and 1 other, 25 by 19  
 778 Six frames, various  
 779 Pair of carved and gilt corner frames, 38 by 23  
 780 Ditto lot  
 781 Carved and gilt swept frame, 28 by  $22\frac{1}{2}$ , and a leaf hol-  
     low ditto, 32 by 27  
 782 Ditto leaf hollow frame, 29 by 24 and a corner pattern  
     ditto, 30 by 25  
 783 Ditto double leaf hollow frame, 58 by 45  
 784 Ditto French corner frame, 59 by 54





## AUCTIONEERS

Date Mar 19.

[illegible]

Attributed to or after.	Subjects.
785 Ditto Lawrence pattern frame, 63 by 57	
786 Ditto, 56 by 44	
787 Carved and gilt running pattern frame, 51 by 43, and a swept ditto, 40 by 27	
788 Gilt fluted frame, 52 by 36	
789 Ditto, 18 by 14	
790 Gold frame	
791 Ditto lot	
792 A Lawrence portrait frame, 36 by 28	
793 Three frames, various	
794 Two gilt frames, 26 by 20 and 21 by 17	
795 Quantity of frames and flats, various	
796 Ten gold frames, various	
797 Ditto lot	
798 Five ditto	
799 Ditto lot	
800 Ditto lot	
801 A gilt frame, 44 by 34	
802 A massive gilt frame, 51 by 34	
803 Ditto lot	
804 Ditto lot	
805 Ditto lot (a.f.)	
806 Two gilt frames	
807 Ditto lot	
808 Four gilt frames and 1 other	

FINIS.



679  
At the Rooms, 10, Soho Square, W.

On TUESDAY, the 23rd day of MARCH, 1920,

At TWELVE o'clock,

**HOUSEHOLD FURNITURE  
AND EFFECTS.**

---

At the Rooms, 65, Oxford Street, W.

On THURSDAY, the 25th day of MARCH, 1920,

At ELEVEN o'clock,

**HOUSEHOLD FURNITURE  
AND EFFECTS.**

---

At the Rooms, 65, Oxford Street, W.

On FRIDAY, the 26th day of MARCH, 1920,

At FIVE o'clock,

**Oil Paintings, Water-color Drawings,  
FRAMES, &c.**

---

Advertisements of above will appear in the Telegraph,  
Times, and other papers, prior to Sale.

---

**Valuations for Probate, Trade and Transfer**

**SURVEYS FOR DILAPIDATIONS,**

Compensation Claims arising from Public Bodies,  
Railway Companies, or Local Boards,

**THE DISPOSAL AND LETTING HOUSES, LAND AND ESTATE.**

---