

## **Sales catalogue: Bonham & Sons**

### **Publication/Creation**

2 January 1920

### **Persistent URL**

<https://wellcomecollection.org/works/y83bdmwd>

### **License and attribution**

This work has been identified as being free of known restrictions under copyright law, including all related and neighbouring rights and is being made available under the Creative Commons, Public Domain Mark.

You can copy, modify, distribute and perform the work, even for commercial purposes, without asking permission.



Wellcome Collection  
183 Euston Road  
London NW1 2BE UK  
T +44 (0)20 7611 8722  
E [library@wellcomecollection.org](mailto:library@wellcomecollection.org)  
<https://wellcomecollection.org>

CR White. WA/HMM/ CM/Sal/11  
TELEPHONE—MUSEUM 1150.

Sale No. 10,146. 120

**65, OXFORD STREET, W.**

OPPOSITE RATHBONE PLACE.

and 10, SOHO SQUARE, W.

ALFRED BONHAM.

CHARLES BONHAM.

**FRIDAY EVENING'S SALE.**

A CATALOGUE  
OF

**PICTURES**

WATER-COLOR DRAWINGS,  
**CHROMOS & ENGRAVINGS**

AND OTHER WORKS OF ART.

*Attributed to the most esteemed Artists of the Old and Modern Schools,*

TOGETHER WITH

**CARVED AND OTHER FRAMES, EASELS**  
AND ARTISTIC PROPERTY GENERALLY.

WHICH WILL BE SOLD BY AUCTION, BY MESSRS.

**W. & F. C. BONHAM & SONS**

AT THEIR LARGE GALLERY, 65, OXFORD STREET.

**On FRIDAY EVENING, JANUARY 2nd, 1920,**

At **FIVE** o'clock to the minute.

May be Viewed until Two o'clock of the day of Sale, and Catalogues had  
at the Galleries 65, OXFORD STREET.

**NOTICE.**—Messrs. W. & F. C. BONHAM & SONS beg to inform their Customers and the Public that their Sale on Thursdays of Household Furniture, &c., will commence at ELEVEN o'clock punctually. All property intended for Thursday's Periodical Sale must be sent in accompanied by a List not Later than MONDAY otherwise the Goods will not be Sold until the following week.

**NOTE.**—The Lists for the usual Friday Evening's Sale of Picture must be sent in not later than Six o'clock on TUESDAY Evening.



**NOTICE.**—Clients wishing to make enquiries of the Firm, are respectfully requested to **APPLY DIRECT TO THE OFFICE, and NOT to unauthorized persons who may solicit them on entering their premises.**

---

**CONDITIONS OF SALE.**

---

**FIRST.**—That the highest bidder shall be the purchaser; and if any dispute shall arise between two or more bidders, the lot or lots, shall, at the discretion of the Auctioneer, be put up again; the Auctioneer's decision to be final.

**SECOND.**—No person to advance less than one shilling in the pound at each bidding.

**THIRD.**—The purchasers to give in their names and places of abode, and pay down 25 PER CENT., if required, in part payment of the purchase-money; such deposit to be applicable to all or any of the lots purchased.

**FOURTH.**—In the case of lots upon which there is a reserve, the Auctioneer shall have the right to bid on behalf of the Seller.

**FIFTH.**—The lots to be paid for and taken away, whether genuine and authentic or not, with all faults and errors of every description, at the Buyer's expense, within one day after the sale, the Auctioneers not being responsible for the correct description, genuineness or authenticity of, or any fault or defect in any lot, and making no warranty or guarantee whatever.

**SIXTH.**—Upon failure of complying with the above conditions, the money deposited in part payment shall be forfeited. All lots uncleared within the time aforesaid, shall be re-sold by public or private sale, and the deficiency (if any) attending such re-sale shall be made good by the defaulter at this sale.

**SEVENTH.**—W. & F. C. BONHAM & SONS while taking every reasonable care to protect the respective lots after they are sold, do not hold themselves responsible for any loss or damage that may arise to any such lots after the fall of the hammer the purchaser taking all risks.

**N.B.**—Cheques will not be accepted in payment of Accounts.

## NOTICES.

ALL GOODS SENT TO THESE ROOMS ARE CONSIDERED BY THE AUCTIONEERS AS SENT FOR UNRESERVED SALE, AND UNLESS WRITTEN INSTRUCTIONS TO THE CONTRARY ARE LEFT IN THE OFFICE BEFORE THE SALE COMMENCES SUCH PROPERTY WILL BE ABSOLUTELY SOLD WITHOUT ANY RESERVE.

NO VERBAL INSTRUCTIONS WILL IN ANY CASE BE ATTENDED TO. AFTER ANY LOT OR LOTS HAVE BEEN OFFERED FOR SALE ONCE AND NOT SOLD, THE AUCTIONEERS REQUIRE THEM TO BE REMOVED, AND SHOULD ANY SUCH LOTS BE LEFT IN THEIR POSSESSION AFTER THE DAY OF SALE THEY WILL NOT IN ANY CASE BE ANSWERABLE FOR ANY DAMAGE, LOSS, OR DETERIORATION, IN ANY SHAPE WHATEVER, AND A CHARGE OF TWO SHILLINGS AND SIXPENCE FOR WAREHOUSE ROOM WILL BE MADE PER WEEK FOR EVERY LOT SO REMAINING, THE AUCTIONEERS RESERVING TO THEMSELVES THE RIGHT OF SELLING ALL OR ANY SUCH UNCLEARED LOTS AT THEIR CONVENIENCE, WITHOUT REGARD TO ANY INSTRUCTIONS THEY MAY HAVE PREVIOUSLY RECEIVED, WRITTEN OR OTHERWISE.

### PAYMENT FOR GOODS SOLD.

Cheques in settlement of accounts are forwarded on the Monday following the Sales, but Clients requiring small accounts paid in cash are requested to attend at the Offices on Saturday, between 11 & 1, or on Monday between 12 & 6.

**SPECIAL NOTICE.**—THE AUCTIONEERS DO NOT HOLD THEMSELVES LIABLE TO PAY FOR ANY LOT OR LOTS KNOCKED DOWN UNTIL THEY HAVE RECEIVED THE MONEY FOR SAME.

---

All Goods left UNCLEARED after this Sale will be  
RESOLD the following week.

---

## A CATALOGUE

FRIDAY EVENING, JANUARY 2nd, 1920,  
At FIVE o'clock to the Minute.

---

Attributed to or after.			Subjects
LOT.			
601	.. ..	Eighteen paintings	
602	.. ..	Three unframed paintings	
603	.. ..	Three framed ditto	
604	S. COOPER & VAN OSTADE	Landscape, Figures, &c. and a Dutch Interior	
605	MORLAND & J. F. HERRING	Figure Subject and Horses, &c.	
606	.. ..	Three small Portraits and Fruit Pieces	
607	TENIERS	Pair of Dutch panel paintings	



	Attributed to or after	Subjects.
608	SPANISH SCHOOL	Pair of panel paintings in gilt frames
609	DUTCH SCHOOL	Pair of speculative paintings
610	ETTY . . . . .	A Nude Figure Subject, and 1 other —Basket of Fruit
611	ROSSETTI . . . . .	The Sea Pearl
612	.. .. .	Three oil paintings—Christ and Mary Magdalene, The Crucifixion, and a small portrait of Nurse Nightingale in gilt frame
613	WRIGHT, of Derby	Rip Van Winkle
614	F. R. LEE, R A . . .	River Scene with Mill
615	W. P. FRITH . . .	An oil painting—After Work
616	H. DAVY . . .	Ditto—A Waveney Backwater
617	W. CHEESEMAM	Ditto—Shepperton-on-Thames
618	OLD MASTER . . .	Mother and Child, pastel
619	MORLAND . . .	Gipsies
620	B. BARKER . . .	Landscape and Cattle
621	T. M. RICHARDSON, RWS and	Two very clever water color drawings
	T. CRESWICK, RA	—Landscapes and Figures, signed
622	N. POUSSIN . . .	A speculative oil painting—Classical Landscape and Figures
623	B. W. LEADER, RA	An oil painting—View in Devonshire Sheep, &c.
624	E. GILT . . .	A Waterfall
625	W. C. STANFIELD	Two oil sketches, framed
626	EDWIN HAYES . . .	In Full Sail
627	DITTO . . . . .	Ramsgate Harbour
628	CARRACCI . . .	Magdalene in Contemplation
629	UNKNOWN . . .	Margaret Tudor of Scotland
630	DITTO . . . . .	An old Continental painting
631	NICOL . . . . .	Interior with Figures
632	BREANSKI . . .	Highland Lake Scene with Cattle
633	W. FIELD, RSA	Water-color drawing—Coast Scene
634	D. ROBERTS . . .	A Continental Harbour Scene
635	ITALIAN SCHOOL	The Madonna and Child surrounded by Saints



Attributed to or after.	Subjects.
636 UNKNOWN ..	Pair of Chinese paintings — Figure Subjects
637 S. PALMER, RI	A water-color drawing — Landscape with Sheep
638 PROFESSOR H. HERKOMER, RA	A clever water-color drawing — The Young Student
639 W. HUNT, RWS	An oil painting — Flowers, signed
640 B. FOSTER, RWS	A highly finished water-color drawing — Landscape and Figures
641 W. HUGHES, RI	A fine example oil painting — Fruit signed
642 .. ..	Oil painting — Interior with Figures
643 .. ..	Ditto — Portrait of a Lady
644 FRENCH SCHOOL	Portrait of a Lady, and 2 engravings — The Merry Companions, etc.
645 .. ..	Pair of oil paintings — Portraits of a Lady and Gentleman, unframed
646 H. D'EGVILLE	A water-color drawing — Richmond Park
647 DITTO .. ..	Ditto — Thames at Richmond
648 MOSCHELES ..	A water-color drawing — Italian Landscape
649 D. COX, RWS..	A clever water-color drawing — The Timber Wagon crossing the Stream signed
650 ITALIAN SCHOOL	An important oil painting — The Holy Family
651 D. ROBERTS, RA	A fine example oil painting — A Street Scene with Figures, Louvain
652 T. B. HARDY, RBA	A water-color drawing — The Coast at Scheveningden, Boats
653 W. WATSON, RSA	A fine oil painting — Highland Sheep on the Moors
654 T. CRESWICK, RA	The Ferry Boat
655 BREANSKI ..	Mountainous Landscape with Cattle at a Stream
656 J. PHILLIPS, RA	A Figure Subject
657 REMBRANDT SCHOOL	Interior of a Surgery with Doctors attending to a Wounded Man

17/-

16-

at A. M. M.



- 658 J. B. PYNE, RA A Continental Landscape with View  
of Town, signed
- 659 Y. SEBBITT .. A water-color drawing—The Old Mill  
House
- 660 ITALIAN SCHOOL An important panel painting—Figures  
&c., from the Belgium Galleries
- 661 J. W. CARMICHAEL A fine oil painting—Off the Dutch  
Coast, Boats and Figures
- 662 W. MIERIS .. A panel painting on copper—Figures  
at a Window, signed
- 663 D. ROBERTS, RA An important water-color drawing—  
An Eastern Landscape, Buildings  
Figures, &c
- 664 COLLINGWOOD A fine exhibited water-color draw-  
SMITH, RWS ing—At Lake Lucerne
- 665 .. .. Oil painting—Portrait of a Lady
- 666 DUTCH SCHOOL Ditto—Interior
- 667 COROT .. .. Ditto—Landscape
- 668 VARLEY .. Pair of Landscapes, Figures, &c.
- 669 W. HUNT .. Pair of Fruit Paintings, signed
- 670 M. NOWEY .. Pair of paintings on panels—Sheep  
&c., signed
- 671 J. F. HERRING An important painting — Farmyard  
Scene
- 672 F. WHEATLEY .. Fortune Teller
- 673 MORLAND .. A Winter Scene with Horses
- 674 .. .. Large water-color drawing of a  
Warrior in white enamelled frame
- 675 DAVID ROBERTS View in Venice, signed
- 676 G. ARMFIELD .. River Scene with Spaniels and Wild  
Duck
- 677 UNKNOWN .. Fruit and Vase on a table
- 678 R. P. BONINGTON Figure Subject
- 679 G. A. WILLIAMS The Banks of the Thames
- 680 VAN GOYEN .. Landscape and View of Antwerp with  
Figures and Boats
- 681 HAMILTON .. Pair of Landscapes, Figures, &c., un-  
framed
- 682 RAE BURN .. Portrait of a Lady



Attributed to or after.	Subjects.
683 MORONI	Full length portrait of a Nobleman 79½ by 45½
684 D. MACLISE	A Scene from Shakespeare
685 J. H. MOLE, RI	An Old Farmhouse
686 A. NORMAND	A Welsh Valley
687 DAVID COX	A Hampshire Cottage
688 BARKER, of Bath	The Poacher
689 H. RONNER, RI	An important oil painting—Out of her Element
690 SIR H. HERKOMER, R.A.	A water-color drawing—The Con- fession, signed
691 H. B. KOEK-KOEK	A fine example painting—Dutch Coast, Boats and Figures
692 VAN DER NEER	A fine old Dutch panel painting—A River Scene with Boats and Figures
693 J. F. HERRING	An important oil painting—Returning Home
694 J. WILSON	Two Vocalists, signed and dated, 1850
695 E. ELLIS	Landscape
696 G. VINCENT	Ditto
697 FRENCH	Portrait of a Lady
698 JANSEN	Ditto
699 C. TOWNE	Landscape
700 J. MACWHIRTER RA	A water-color drawing—A Scotch Landscape with Cattle and Figures
701 DUTCH SCHOOL	Night Scene with numerous Figures outside a Refreshment Booth
702 A. BRAUWER	A Dutch Musical Party
703 CRESWICK, RA	A Woody Landscape with Lake Scene and Figures
704	An oil painting—The Fortune Teller in carved gilt frame
705	Ditto the companion picture
706	Speculative Portrait of a Lady
707 McWHIRTER, RA	Forest Scene
708 J. W. CARMICHAEL	Pair of clever water-color drawings— Coast Scenes



	Attributed to or after.	Subjects.
709	MUNCKASCY ..	Landscape and Figures
710	W. W. CAFFYN, RBA	An oil painting — Lane with Sheep near Boxhil
711	D. ROBERTS, RA	A very fine painting — Interior of Cathedral, Paris, Figures, &c.
712	C. TOWNE, 1802	Pair of very fine example paintings— Landscapes with Cattle and Figures signed and dated
713	D. ROBERTS, RA	A water-color drawing—River Scene with Boats, Buildings, Figures, &c.
714	P. DE LASZLO ..	A very finely painted work — The Pursuit of Pleasure
715	J. F. HERRING	A Farmyard Scene
716	G. BREANSKI ..	Sheep
717	EUGENE BLOCK	Sailor and Lass
718	A. RAMSAY ..	Portrait of a Lady
719	LESLIE .. ..	Lake Scenes, a pair
720	HOARE (of Bath)	Portrait of a Lady
721	S. BOUGH.. ..	Holyhead and Harbour
722	UNKNOWN ..	Interior of Cathedral and 2 Figure Subjects
723	G. H. SWINSTEAD, RA	—An important exhibited oil painting — Trespassers will be Prosecuted
724	H. TENKATE ..	A very fine example painting — Sunday Morning, Holland, signed in fine frame
725	J. W. CARMICHAEL	A fine oil painting—Off the Coast Shipping, &c.
726	C. STANFIELD, RA	An important oil painting — Dutch Coast Scene, with Boats and Figures signed
727	SIR H. HERKOMER, RA	A water-color drawing — On the Convent Terrace, Figures, &c., signed
728	T. B. HARDY ..	A drawing—Rising Storm, Dogger- Bank
729	S. PROUT ..	Interior of a Cathedral
730	.. ..	Figure Subject, signed
731	W. HULK ..	Landscape with Cattle

Attributed to or after.	Subjects
732 BREUGHEL	An old Dutch Figure Subject
733 DE VOSS	Portrait of Author
734 T. B. HARDY	Landscape
735 WAINWRIGHT	Pair of Landscapes with Cattle
736 R. B. DAVIS	A painting—Hunting
737 DITTO	Ditto
738 W. SHAYER	An important oil painting—At the Village, Forge, Horses, Figures, &c.
739 C. S. LIDDERDALE	An important exhibited water-color drawing—The Squire's Daughter
740 J. B. GREUZE	Pair of very fine oil paintings—Figure Subjects
741 T. B. HARDY, RBA	A water-color drawing — French Coast Scene with Boats, &c.
742 E. VERBOECKHOVEN	Pair of clever paintings—Dutch Landscapes with Sheep
743 J. B. PYNE, RWS	A very fine panel painting—Landscape with Figure, &c. in handsome frame
744 P. NASMYTH	An oil painting—Landscape
745 BREUGHEL	A ditto—Landscape and Figures
746 .. ..	A ditto—Landscape and Sheep
747 T. S. COOPER	A ditto—Sheep
748 McCULLOCH	A Highland Landscape
749 T. S. COOPER	Sheep on a Road
750 UNKNOWN	Portrait of a Lady
751 S. J. CLARK	An oil painting—Farmyard
752 COOPER	Ditto—Cattle in a Stream
753 WAINWRIGHT	Ditto—Cattle
754 J. PETHE, RA	Ditto—Cavalier
755 E. CROFTS	Ditto—Betrayed
756 J. ISRAELS	Ditto—Interior
757 GEO. HASTINGS	A Beach Scene with Sunset, River View
758 W. SHAYER, RA	Coast Scene with Figure on the Beach
759 MEISSONIER	Interior of a Library with Gentleman seated at a table

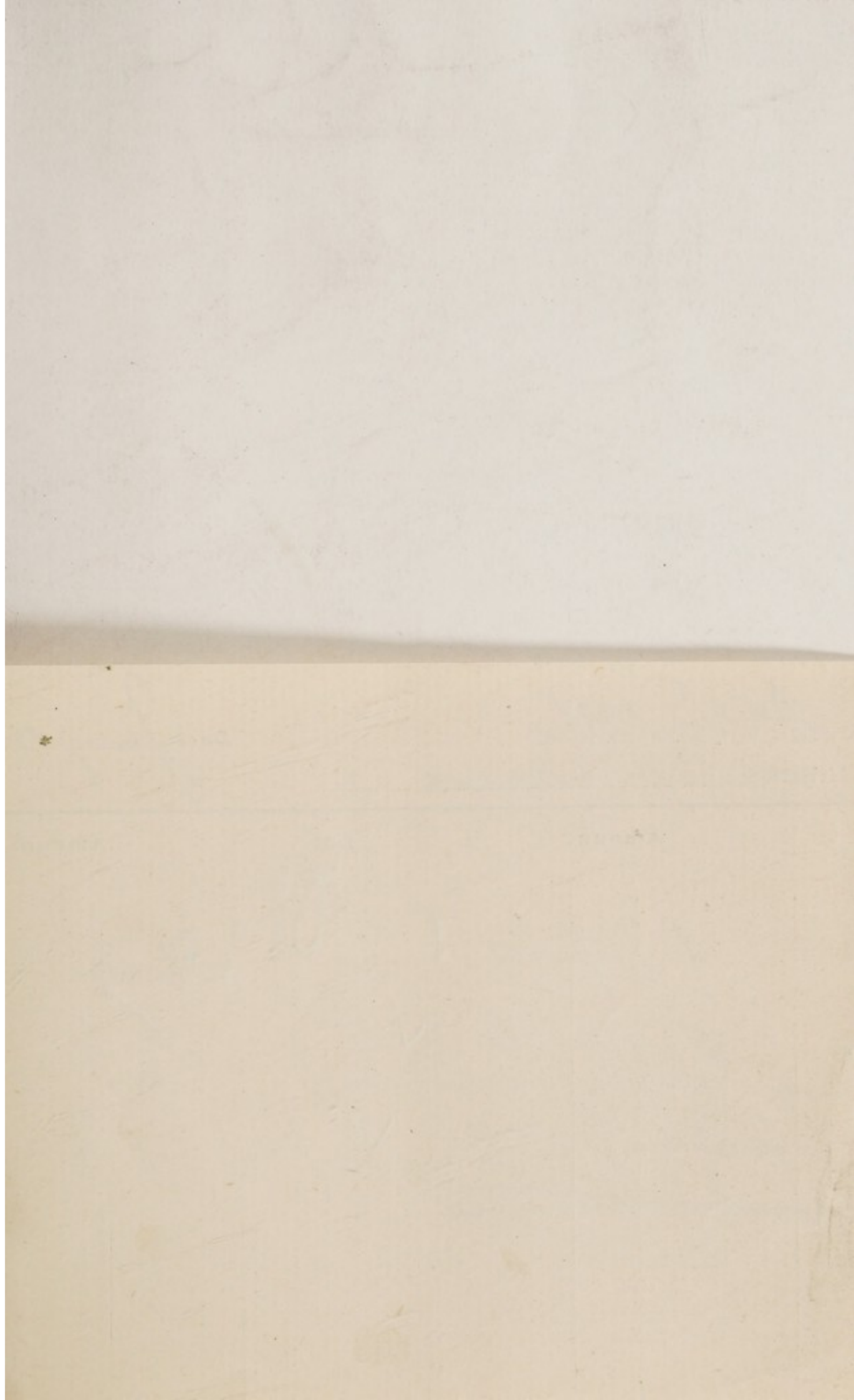


## Attributed to or after.

## Subjects.

- 760 D. ROBERTS, RA A Market Place in Normandy
- 761 DUTCH SCHOOL A Traveller attacked by Wild Beast
- 762 D. ROBERTS, RA An important oil painting—The Town Hall and Market Place, Bruges Belgium
- 763 D. COX, RWS.. A fine water-color drawing—Lane Scene, Figure and Sheep, Kent
- 764 THEO. WEBER.. A very fine oil painting—Coast Scene Boats and Figures
- 765 C. STANFIELD, RA Pair of fine circle paintings—Dutch Coast and Shipping in fancy frame
- 57101- 6. 766 DUTCH SCHOOL Figure Subject
- 767 HERRING .. Stable Scene
- 768 UNKNOWN .. River Scene with Mill
- 769 J. H. BODDINGTON Lake Scenes, a pair
- 770 R. WILSON, RA River Scene and Figures
- 771 B. FOSTER, RWS A highly finished water-color drawing—Blackberry Gatherers
- 772 VICAT COLE, RA A well finished water-color drawing—River Scene with Figures, Haslemere, Surrey
- 773 ACKRONA A Norwegian Landscape and Figure (of Stockholm) signed
- 774 .. .. Three water-color drawings in gilt frames
- 775 P. DELASZLO .. A clever sketch—Tired Out, signed
- 776 WHEATLEY .. Pair of Figure Subjects in colors
- 777 BEECHER .. Children Relieving a Beggar Boy
- 778 REYNOLDS .. A colored picture—Flower Girl
- 779 .. .. Two colored pictures—Marine View and a Figure Subject
- 780 S. SHELLEY .. Love Healed, printed in colors
- 781 .. .. Seven Old Sporting engravings
- 782 .. .. An old engraving—Haymakers, and 2 others—Views of Mount Edgecumb
- 783 SAMUEL COUSINS Twenty fine engravings, some signed
- 784 .. .. Two large pictures and 5 others
- 785 .. .. Nine drawing frames, glazed

at H. 1





BUYER Al Wilkes  
AUCTIONEERS Bonham

Date Jan 21

Lot	Amount			Lot	Amount		
	£	s.	d.		£	s.	d.
657	17	17	0	OK			
766	5	10	0	✓			
<hr/>							
	23	7	0	✓			
<hr/>							
<hr/>							

- 786 .. .. Two old colored engravings and 3 others
- 787 SCHOOL OF BOTTICELLI  
and UNKNOWN Three old pictures
- 788 LANDSEER .. Three proof engravings, and 1 other
- 789 .. .. Portfolio containing over 100 caricatures
- 790 .. .. Parcel containing a quantity of old London Views
- 791 .. .. Parcel of miscellaneous fancy prints Sporting and 2 American Views
- 792 .. .. Parcel containing 2 colored French Prints, and 6 engravings, various
- 793 KAUFFMAN .. A fine old engraving—Younger Pliny Reproved
- 794 GAINSBOROUGH A water-color drawing, and 1 other  
AND B. FOSTER drawing
- 795 R. FARQUHARSON Two water-color sketches, a French Portrait, and 2 others
- 796 SCHAVIONETTI .. Morning Lesson and Evening Prayer
- 65- 797 TENIERS .. An old engraving in black frame and a pair of finely colored Arundel lithographs in oak frames *Duplica*
- 798 .. .. Old needlework, framed
- 799 LANDSEER .. Dignity and Impudence
- 800 .. .. Mrs. Siddons as the Tragic Muse
- 801 .. .. Three oval Bartolozzi engravings—Fancy Subjects
- 802 .. .. Two oval colored engravings — Children Subjects and 1 other—Old Master drawing
- 803 .. .. Seven framed engravings
- 804 .. .. Roll of modern engravings

FINIS.



At the Rooms, 10, Soho Square, W.

On TUESDAY, the 6th day of JANUARY, 1920,

At TWELVE o'clock,

**HOUSEHOLD FURNITURE**  
AND EFFECTS.

---

At the Rooms, 65, Oxford Street, W.

On THURSDAY, the 8th day of JANUARY, 1920,

At ELEVEN o'clock,

**HOUSEHOLD FURNITURE**  
AND EFFECTS.

---

At the Rooms, 65, Oxford Street, W.

On FRIDAY, the 9th day of JANUARY, 1920,

At FIVE o'clock,

**Oil Paintings, Water-color Drawings,**  
FRAMES, &c.

---

Advertisements of above will appear in the Telegraph,  
Times, and other papers, prior to Sale.

---

**Valuations for Probate, Trade and Transfer**  
**SURVEYS FOR DILAPIDATIONS,**

Compensation Claims arising from Public Bodies,  
Railway Companies, or Local Boards,

**THE DISPOSAL AND LETTING HOUSES, LAND AND ESTATE.**

---