

## **Sales catalogue: Bonham & Sons**

### **Publication/Creation**

6 November 1919

### **Persistent URL**

<https://wellcomecollection.org/works/bvp8w3zz>

### **License and attribution**

This work has been identified as being free of known restrictions under copyright law, including all related and neighbouring rights and is being made available under the Creative Commons, Public Domain Mark.

You can copy, modify, distribute and perform the work, even for commercial purposes, without asking permission.



Wellcome Collection  
183 Euston Road  
London NW1 2BE UK  
T +44 (0)20 7611 8722  
E [library@wellcomecollection.org](mailto:library@wellcomecollection.org)  
<https://wellcomecollection.org>

WA/HMM/CM/Sal/11/101

Telephone—MUSEUM 1150.

Sale No. 10,122.

**65, OXFORD STREET.**

(OPPOSITE RATHBONE PLACE), AND

**10, SOHO SQUARE, W.**

ADJOINING.)

ALFRED BONHAM.

CHARLES BONHAM.

**A CATALOGUE**

OF A QUANTITY OF

**MODERN HOUSEHOLD**

**FURNITURE**

AND EFFECTS,

Removed from Alexandra Road and England's Lane, Hampstead, Holland Road, Kensington, Rustington, Sussex Brorfield Road, Brockley, Regent's Park, N.W., The Mall, Southgate, Mitcham Lane, from several Depositories, and from other sources.

*Which will be Sold by Auction, by*

**W. & F. C. BONHAM & SONS**

At their Spacious Rooms, 65, OXFORD STREET,

OPPOSITE RATHBONE PLACE

**On THURSDAY, 6th NOVEMBER, 1919,**

*AT ELEVEN O'CLOCK.*

Now on view and until time of Sale, and Catalogues forwarded Post Free on application to the Auctioneers' Offices,

65, OXFORD STREET.

**NOTICES.**

All Property intended for the Thursday's Periodical Sale must be sent in accompanied by a List not later than FIVE o'clock on MONDAY, otherwise the Goods will not be sold until the following week.

The List for the usual Friday Evening's Sale of Pictures must be sent in not later than SIX o'clock on TUESDAY Evening prior.

**SPECIAL NOTICE.**—W. & F. C. BONHAM & SONS beg to direct particular attention to their Weekly Tuesday's Sale in the Spacious Galleries at 10, SOHO SQUARE. Property intended for this Sale must be sent in not later than Mid-day Friday previous.



**NOTICE.**—Clients wishing to make enquiries of the Firm, are respectfully requested to **APPLY DIRECT TO THE OFFICE, and NOT to unauthorized persons** who may solicit them on entering their premises.

---

**CONDITIONS OF SALE.**

---

**FIRST.**—That the highest bidder shall be the purchaser; and if any dispute shall arise between two or more bidders, the lot or lots, shall, at the discretion of the Auctioneer, be put up again; the Auctioneer's decision to be final.

**SECOND.**—No person to advance less than one shilling in the pound at each bidding.

**THIRD.**—The purchasers to give in their names and places of abode, and pay down 25 PER CENT., if required, in part payment of the purchase-money; such deposit to be applicable to all or any of the lots purchased.

**FOURTH.**—In the case of lots upon which there is a reserve, the Auctioneer shall have the right to bid on behalf of the Seller.

**FIFTH.**—The lots to be paid for and taken away, whether genuine and authentic or not, with all faults and errors of every description, at the Buyer's expense, within one day after the sale, the Auctioneers not being responsible for the correct description, genuineness or authenticity of, or any fault or defect in any lot, and making no warranty or guarantee whatever.

**SIXTH.**—Upon failure of complying with the above conditions, the money deposited in part payment shall be forfeited. All lots uncleared within the time aforesaid, shall be re-sold by public or private sale, and the deficiency (if any) attending such re-sale shall be made good by the defaulter at this sale.

**SEVENTHLY.**—W. & F. C. BONHAM & SONS while taking every reasonable care to protect the respective lots after they are sold, do not hold themselves responsible for any loss or damage that may arise to any such lots after the fall of the hammer the purchaser taking all risks.

**N. B.**—Cheques will not be accepted in payment of Accounts



## NOTICES.

ALL GOODS SENT TO THESE ROOMS ARE CONSIDERED BY THE AUCTIONEERS AS SENT FOR UNRESERVED SALE, AND UNLESS WRITTEN INSTRUCTIONS TO THE CONTRARY ARE LEFT IN THE OFFICE BEFORE THE SALE COMMENCES SUCH PROPERTY WILL BE ABSOLUTELY SOLD WITHOUT ANY RESERVE.

NO VERBAL INSTRUCTIONS WILL IN ANY CASE BE ATTENDED TO. AFTER ANY LOT OR LOTS HAVE BEEN OFFERED FOR SALE ONCE AND NOT SOLD, THE AUCTIONEERS REQUIRE THEM TO BE REMOVED, AND SHOULD ANY SUCH LOTS BE LEFT IN THEIR POSSESSION AFTER THE DAY OF SALE THEY WILL NOT IN ANY CASE BE ANSWERABLE FOR ANY DAMAGE, LOSS, OR DETERIORATION, IN ANY SHAPE WHATEVER, AND A CHARGE OF TWO SHILLINGS AND SIXPENCE FOR WAREHOUSE ROOM WILL BE MADE PER WEEK FOR EVERY LOT SO REMAINING, THE AUCTIONEERS RESERVING TO THEMSELVES THE RIGHT OF SELLING ALL OR ANY SUCH UNCLEARED LOTS AT THEIR CONVENIENCE, WITHOUT REGARD TO ANY INSTRUCTIONS THEY MAY HAVE PREVIOUSLY RECEIVED, WRITTEN OR OTHERWISE.

### PAYMENT FOR GOODS SOLD.

Cheques in settlement of accounts are forwarded on the Monday following the Sales, but Clients requiring small accounts paid in cash are requested to attend at the Offices on Saturday, between 11 & 1, or on Monday between 12 & 6.

**SPECIAL NOTICE.**—THE AUCTIONEERS DO NOT HOLD THEMSELVES LIABLE TO PAY FOR ANY LOT OR LOTS KNOCKED DOWN UNTIL THEY HAVE RECEIVED THE MONEY FOR SAME.

---

All Goods left UNCLEARED after this Sale will be  
RESOLD the following week.

---

## A CATALOGUE

On THURSDAY, NOVEMBER 6th, 1919,

At ELEVEN o'clock.

LOT

### IN SIDE GALLERY.

- 1 Two deal tables, in lino, and 2 galvanized iron sanitary bins
- 2 Three enamelled slop pails, 2 jugs, 2 bowls, chamber, 2 colanders  
sponge tray, soap ditto, floor polisher, frying pan, saucepan  
slice, gas bar, 5 moulds, chopper, brush, 2 butter pats, pair of  
tongs, poker, tin case locked and a quantity of patty tins
- 3 Four large baking tins, 22 smaller ditto, 5 kettles, 4 frypans  
enamelled saucepan with 2 steamers and a stock pot with  
cover
- 4 Set of scales, 7 weights, 4 saucepans, enamelled stew pan, large  
fish kettle, 3 enamelled jugs, ditto pie dish, ditto egg poacher  
22 small cake tins, 3 moulds, 3 graters, coffee mill, mincer, flat  
iron, 3 pastry cutters, iron boiler, 18 napkin rings, strainer, 6  
spoons, meat stand, steel, saw, chopper, 2 brushes, rolling pin  
egg beater and a wire meat cover



- 5 Meat safe and a knife machine
- 6 Fourteen wicker bread baskets, 2 oak trays and 3 patent bread cutters
- 7 A deal 2-flap table, 2 deal boards, 2 trestles, clothes horse, 2 Windsor chairs, rail back ditto, barrel stand and a fibre door mat
- 8 Two moulds, 2 basins, pie raiser, 2 large meat dishes, 35 pieces of dinner and tea ware, various, 12 pieces of cutlery and 2 iron spoons
- 9 Ten knives with white handles, ditto with plated handle, 22 spoons, 16 forks and a pair of sugar tongs
- 9A Set of scales and weights, canister, pail, 2 brown pans, 1 other pestle and mortar, spice box, brush, bread plate, chopping board, steel, knife, 3 flower stands, syphon, scoop, tile, kettle and a wire vegetable rack
- 9B Brown oak cabinet refrigerator
- 10 Three rolls of linoleum
- 11 Two rolls of ditto
- 12 Two rolls of linoleum
- 13 Three rolls of ditto
- 14 Five rolls of ditto
- 15 Four rolls of linoleum
- 16 Roll of linoleum
- 16\* Three rolls of lino and a roll of pieces
- 17 A knife cleaning machine
- 18 Ditto lot
- 19 Ditto lot
- 20 Ditto lot
- 21 Eight galvanized iron pails and 3 folding chairs
- 22 Twenty-four hair broom heads
- 23 A Singer's sewing machine on stand
- 24 A Kent's knife cleaning machine
- 25 A steam radiator for an hall, by WRIGHT of Birmingham
- 26 A green canvas tent, ditto bath on stand, camp chair, india rubber bath, 2 lawn tennis nets and 4 uprights with iron sockets
- 27 Six croquet balls, 4 mallets, box with irons, 6 hockey sticks, 2 base ball bats, 6 iron rods with numbers and 3 weed sticks
- 28 Large lawn mower
- 29 Lawn mower with receiver
- 30 Ditto lot
- 31 Ditto lot (a.f.)
- 32 A croquet set in box, wicker table, wicker arm chair and a 4-fold screen



- 33 Two indiarubber garden hoses on reels, and 2 window flower boxes with embossed copper fronts
- 34 Two pairs of shears, 2 garden forks, tennis net with fittings indiarubber hose, 7 tennis bats, 4 ditto stretchers, sieve, 3 leather revolver cases, iron hanger, 2 wood stands, and pieces of scenery
- 35 Hand sewing machine, electric ironer, brass kettle with lamp on stand, 4 brass brackets, barometer in case, and an antique dagger
- 36 An electric radiator, ditto ironer, pair of boot trees, 80 books Oriental sword, 4 jewel cases, 2 printing frames, leather case and 4 other articles
- 37 An electric radiator, oil stove, bird's cage, patent carpet sweeper mirror, 2 pictures and a bamboo table
- 38 Nearly new meat masher, and a ditto grater
- 39 Tin coffee urn, and a water ditto
- 40 An Ewart's copper geyser (1 foot missing)
- 41 A wringing machine
- 42 Copper hot water geyser
- 43 Oil cooking stove with oven, &c.
- 44 White stone china lavatory basin with plug and tap, on ditto stand
- 45 A 5ft grained oak dresser with drawers, panel doors and shelves over
- 46 Six football nets with posts, and 10 lawn tennis nets with posts and iron fittings
- 47 Two tug-o'-war ropes
- 48 Two large canvas tents, 14 iron curtain rods, matting billiard surround, and 30 green curtains
- 49 Sixty-three pairs of men's boots
- 50 Fifteen pairs of boxing gloves, 2 footballs, 8 ditto outer covers and 12 inner tubes
- 51 A hamper containing 17 pieces of amber material, 2 flags 15 white pierrot suits, 2 pairs of ditto trousers, 2 black ditto 7 collarettes, 8 chair covers, tie, 2 pairs of trousers (a.f.), 8 jackets (a.f.), 7 pairs of shoes, and 3 hats
- 52 Sixty-nine football shirts and jerseys, 70 knickers, 20 socks, 3 cushions and a police helmet
- 53 A gentleman's Irish frieze motoring coat
- 54 A gentleman's evening suit, lined with satin, and a smoking jacket
- 55 Pair of corduroy riding breeches, 2 fancy woollen waistcoats, 2 white waistcoats, 2 black ditto, and a morning coat
- 56 Three dozen gentlemen's white shirts, black trunk, and a silk hat in box



- 57 Black travelling basket, pair of lady's gilt shoes, pair of black ditto, bag of pieces of material, feather pillow, bead necklace, silk shawl, silk cover, 2 muslin curtains, and 9 articles various
- 58 Lady's leather bound travelling trunk, tin ditto and a lady's travelling hat box
- 59 A solid leather suit case
- 60 Lady's coat, fur boa and a ditto muff
- 61 Mahogany hat and coat stand (a.f.), 4 sets of oak coat hooks, 4 fibre door mats and a copper curb fender
- 62 Three wicker arm chairs with loose cushions, and a square top card table
- 63 Four notice boards, letter box, plate rack, 5 paper racks, and 4 paper trays
- 64 Brass and glass coffee maker, 4 plated table forks, 3 dessert ditto, 6 dessert spoons, tea ditto, 3 egg ditto, jam scoop, 12 table mats, plated button hook, ditto shoe horn, brush and 2 frames
- 65 A butler's tray and stand, mahogany frame chair in leather cloth and a painted medicine cabinet
- 66 Mahogany towel airer, 2 birch chairs with cane seats and a dressing glass in birch frame
- 67 Four chairs, 2 folding-up camp stools and a large brown underfelt
- 68 A lac-japanned tray, paper basket, 2 hanging glasses, quantity of brass hooks and rings, plate basket, 2 hassocks, 4-fold Japanese screen, cauldron and a door scraper
- 69 Two china slop pails, 30 pieces of toilet ware, various, 3 enamelled plates, and a quantity of tin boxes
- 70 Three metal dish covers (1 a.f.), copper coffee pot, quantity of paper dessert plates, fan, color box, palette board, large door lock with key and brass hinges, and 2 lac trays
- 71 Thirty-five cricket bats (some a.f.), 42 ditto stumps, 27 leg pads, 5 pairs of gloves, 6 hand pads, 5 cricket balls, 9 others, 4 quoits, table tennis net, pair of shears, and a lawn tennis net with posts
- 72 Six music stands, bundle of unbound music, deal paper rack, electric standard lamp with shade, and an oak salad bowl with china liner
- 73 122 saucers, 6 cups, 17 egg ditto, dessert dish (a.f.), 2 breakfast cruets, sugar easter, 7 salt ditto, lemon dish, 2 tea pots, and 3 jugs
- 74 Six dishes, 7 tureens, 10 covers, 8 sauce boats, 9 basins, 3 jugs and 3 cheese dishes and covers



- 75 Part brass hanging lamp, 2 brass fittings, brass electric bracket  
brass letter box (a.f.), 2 cornice poles, 5 brass curtain rods  
trousers press (a.f.), deal press, china rack, mahogany flap  
roll of stair carpet, and a roll of felt
- 76 Three strainers, enamelled water can, baking tin, electric ironer  
fry pan, preserving pan, 2 cake tins (1 a.f.), 2 gridirons, metal  
dish cover, and an oval 2-handle tray
- 77 Twenty-seven glass dishes (1 a.f.), ditto cake stand, 4 bottles  
decanter, glass jug, and a celery vase
- 78 Eleven champagne glasses, 12 tumblers, 2 glass jugs, 7 wine  
glasses, 62 liqueur glasses, and a pickle jar
- 79 Twenty-seven plated table spoons, 21 ditto forks, 8 ditto dessert  
spoons, 15 ditto forks, 11 ditto tea spoons, 3 salt ditto, 9 table  
knives, 5 dessert ditto, pair of servers, 2 cork screws, gimlet  
tin opener, measure, and 2 plated flasks
- 80 Eleven pieces of flower pattern china toilet fittings
- 81 148 china dinner plates, 92 soup plates and 15 electric bulbs
- 82 Bordered Woodstock carpet
- 83 Three pieces of matting, velvet pile rug, fibre door mat, puff  
ottoman, 3 roller blinds, iron curb fender, set of coat hooks  
coal pail, pair of coal tongs, brush, shovel and a pair of dumb  
bells
- 84 A 3ft 6 white enamelled iron and brass French bedstead, wire  
spring mattress, and a hair overlay
- 85 A 4ft 6 hair overlay
- 86 A 4ft grained oak linen cupboard, the upper part with panel  
doors and drawer under
- 87 A japanned linen chest with 2 drawers under
- 88 Two mahogany bidets with pans, and a towel airer
- 89 Brass shaving stand with mirror
- 90 A 4ft 6 green enamelled iron and brass French bedstead, wire  
spring mattress, canvas platform, top overlay, feather bolster  
and 2 ditto pillows
- 91 Ditto lot, 4ft wide
- 92 A 4ft 6 grained oak store cupboard with panel doors
- 93 Mahogany bidet with liner
- 94 Folding iron chair bedstead with 3 cushions and a pair of brown  
window curtains
- 95 A 3ft iron French bedstead, roll-up wire spring mattress and a  
top overlay
- 96 Oak frame settee bedstead with wire spring attached, squab  
and 3 cushions
- 97 A 6ft 6 grained oak wardrobe with sliding trays, drawers and  
panel doors



- 98 Bamboo chest of 3 drawers, ditto boot cupboard and a ditto book rack
- 99 A 4ft iron French bedstead, wire spring mattress, top overlay bolster and 2 pillows
- 100 White enamelled dressing chest of drawers with swing glass over
- 101 Three red enamelled frame chairs with rush seats, a 3-tier lac japanned cake stand and a footstool in needlework
- 102 Bordered Woodstock carpet
- 103 Ditto lot
- 104 Ditto lot
- 105 Large roll of cocoanut matting
- 106 Ditto lot
- 107 Ditto lot
- 108 Large green felt carpet, and 2 grey underfelts
- 109 A 3ft iron French bedstead with a wire spring mattress attached and 2 overlays
- 110 A ditto bedstead, 2 overlays, feather bolster and a ditto pillow
- 111 A 4ft 6 double wire spring mattress
- 112 Six large white sheete
- 113 Ditto lot
- 114 Ditto lot
- 115 Three ditto
- 116 Four ditto with hemstitched borders
- 117 Ditto lot
- 118 Two large fancy bedspreads
- 119 Ditto lot
- 120 Four hemstitched sheets
- 121 Ditto lot
- 122 Ditto lot
- 123 Ditto lot
- 124 Ditto lot
- 125 Three large sheets of heliotrope, 2 smaller ditto, and a piece of ditto valance
- 126 Five blankets and a down quilt in satteen case
- 127 A large blanket, pair of cretonne curtains and 2 cushions in ditto
- 128 Two bed spreads, 2 red and black cretonne curtains, 2 black curtains, 3 blue ditto, and 6 table covers, various
- 129 Two pairs of cretonne window curtains, 2 lengths of valance and 2 mahogany cornice poles with rings
- 130 Seven pairs of sheets
- 131 Three large cretonne curtains, large bed valance, lined, superior quality

- 132 Two pairs of window curtains, 3 yards long
- 133 Ditto lot
- 134 Two pairs of sheets with hemstitched borders
- 135 Ditto lot
- 136 Ditto lot
- 137 Three bordered Witney blankets
- 138 Ditto lot
- 139 Ditto lot
- 140 Six pieces of green material, 2 lengths of crimson ditto and 2 embroidered piano covers
- 141 Four blankets
- 142 Ditto lot
- 143 Ditto lot
- 144 Ditto lot
- 145 A 2ft 6 iron combination bedstead with wire spring mattress attached, and a wool overlay
- 146 Ditto lot
- 147 Ditto lot
- 148 Ditto lot
- 149 Ditto lot
- 150 A 3ft iron French bedstead, roll-up wire spring mattress, and a wool overlay
- 151 Ditto lot
- 152 A 4ft iron and brass French bedstead, wire spring mattress hair overlay, feather bolster and 2 ditto pillows
- 153 A 4ft 4 walnut chest of 8 drawers
- 154 A 4ft 6 brass French bedstead, palliasse in 2 parts and a hair overlay
- 155 A feather bed in white case, bolster and 2 ditto pillows
- 156 A 3ft 6 brass French bedstead, wool overlay and a hair ditto
- 157 A feather bed in white case, bolster and a ditto pillow
- 158 A 4ft mahogany frame washstand with marble slab and a bidet with liner (the cover a.f.)
- 159 Feather bolster and 2 ditto pillows in white cases
- 160 Ditto lot
- 161 An Axminster carpet
- 162 A bordered Axminster carpet
- 163 A brass ash pan, 2 wire fireguards and a roll of matting
- 164 Two copper electric radiators
- 165 Steel and ormolu mounted curb fender, set of ditto fire implements and 2 pairs of brass coal tongs
- 166 Four crimson plush door mats, 3 skin ditto, roll of matting and a stool
- 167 Thirty seven massive brass stair rods



- 168 Two large Oriental rugs
- 169 Wicker lounge chair with draw-out leg rest
- 170 Large Axminster show room carpet
- 171 A smaller ditto
- 172 Ditto lot
- 173 Ditto lot
- 174 Roll of bordered Axminster stair carpet
- 175 Large settee (a.f.), spring stuffed in American cloth and loose cover
- 176 Rosewood frame high back chair, in needlework
- 177 An invalid's walnut frame couch with 2 loose hair stuffed squabs
- 178 A portable pianoforte in mahogany case, by METZLER & Co.
- 179 Carved frame suite in tapestry of a couch, 2 easy chairs, and 6 small chairs
- 180 Bordered Oriental carpet
- 181 Five lengths of velvet pile stair carpet
- 182 A 4ft walnut sideboard with drawers and panel doors under, no back
- 183 Walnut oval shape writing table with tray top, in cloth
- 184 An inlaid 2-tier tea table with brass galleries and ormolu mounts
- 185 A butler's walnut tray and stand, and a ditto coffee table on pillar and claws
- 186 An ebonized easel, 2 wicker work baskets, palm stand, and 2 butlers' trays and stands
- 187 Mahogany hall table with 2 drawers, box stand, and a small cabinet
- 188 Rosewood round table on pillar and claw with marble slab, and a chess top table on pillar and claws
- 189 Pedestal, covered in plush, smaller ditto, and a gilt and painted jardinier stand with marble top
- 190 Brass and iron circular table, and 2 wrought iron and copper floor lamps
- 191 Mahogany oval shape coffee table, and a square top ditto on pillar and claws
- 192 A solid mahogany table on turned legs
- 193 Green ground Axminster carpet
- 194 A bordered Wilton pile sofa carpet and an Oriental rug
- 195 A Wilton pile rug, 2 Axminster mats, 3 blue rugs and 3 green mats
- 196 Couch, spring stuffed in figured crimson velvet
- 197 Chimney glass in gilt frame
- 198 A ditto in black and gilt frame



- 199 A 4 fold screen in crimson felt, folding chair with cane seat and back and a box ottoman in needlework
- 200 Copper breakfast stand with 2 lamps, plated reading lamp with shade, Ellain's flat duplicator and a rifle
- 201 Plaster figure holding a tray
- 202 Two euphoniums and 1 leather case for same
- 203 A violincello with bow (a.f.), violin with bow in case (a.f.) and a clarionet
- 204 An old breast plate, ditto rifle, ditto sword in scabbard, sword fish and a pistol walking stick
- 204\* Ten rolls of music, O'Cedar mop, complete and a pair of high top boots with rubber soles, lined with lamb's wool
- 205 Large bundle of medical and other books
- 206 Quantity of books in case
- 207 Sixty-four vols of books, 2 outside signs and a 2-fold screen
- 208 Two colored prints in gilt frames and a pair of water-color drawings

## IN LARGE GALLERY

**Commencing at 2 p.m.**

- 209 Three large white Marcella quilts
- 210 Two smaller ditto
- 211 Large white embroidered bedspread
- 212 Two extra large best quality Witney blankets
- 213 Brass canopy with green silk hangings, large floral pattern cretonne curtain, and a pink brocade ditto
- 214 A 3ft 6 all brass French bedstead
- 215 Birch BED CHAMBER SUITE, of a 6ft wardrobe with dress hooks, sliding trays and drawers, panel doors and plate glass ditto, pedestal dressing table with drawers and swing glass over, pedestal washstand with marble top, pedestal chamber cupboard, towel airer, and 3 chairs
- 216 An ash pedestal dressing table with drawers and swing glass over
- 217 A gent's 4ft wardrobe with 4 drawers and sliding trays
- 218 Bordered pile carpet, 10ft 6 by 9ft
- 219 A brass curb fender, set of brasses and a pair of fire dogs
- 220 An iron curb fender with brass rail, set of brasses, brass coal purdonium with scoop and an iron curb fender
- 221 A 3ft white enamelled iron and brass French bedstead with wire spring attached and a wool overlay, nearly new
- 222 White enamelled bed chamber suite of a 4ft Beaconsfield wardrobe with drawers, plate glass and panel doors, dressing table with marble slab and glass over, in carved ivory frame, washstand with marble slab and tile back, chamber pedestal, and a set of bookshelves



- 223 A 4ft 6 white enamelled Beaconsfield wardrobe with bevelled plate glass door, panel doors and drawers under
- 224 Fine bordered Axminster carpet 16ft 6 by 12ft, fire place out
- 225 Nineteen yards of Wilton pile stair carpet, 36ins wide
- 226 Brass curb fender and a set of ditto fire implements
- 227 Brass and copper curb fender, pair of ditto fire dogs and a set of ditto fire implements
- 228 A 4ft brass French bedstead, box spring mattress, wool overlay, and a feather bolster
- 229 A satin-walnut bed chamber suite of a 5ft wardrobe with drawers, enclosed by plate glass doors, dressing chest of drawers with side and centre glasses over, washstand with marble slab and tile back, chamber pedestal, towel airer (a.f.) and 2 cane seat chairs
- 230 A Parisian walnut enclosed washstand with marble slab, plate glass panel and cupboard under
- 231 A walnut and brass shaving stand with mirror over
- 232 A 4ft walnut upright CABINET BEDSTEAD with wire spring forming wardrobe with plate glass panel
- 233 Satin-walnut bed chamber suite, of a 3ft wardrobe with bevelled plate glass door, dressing chest of drawers with swing glass over, and a washstand with marble top and tile back
- 234 A 3ft ditto frame washstand with marble top and tile back
- 235 Bordered Rose du Barri green Wilton pile carpet, 13ft 6 by 11ft 6
- 236 A 5ft BRASS ITALIAN BEDSTEAD with cretonne head board, wire spring attached, platform with valance, hair overlay and a feather bolster
- 237 Walnut and ash BED CHAMBER SUITE of a 6ft wardrobe with dress hooks, pair of bevelled plate glass doors, centre with panel doors and 5 drawers under, dressing chest of 7 drawers, swing glass over, cabinets at sides, washstand with marble top, tile back, mirror over, chamber cupboard, 4 chairs and a towel airer
- 238 A 3ft walnut and ash writing table with drawer, top lined with loather to match
- 239 Ditto medicine cupboard with panel doors to match
- 240 Burr walnut and walnut UPRIGHT CHEST OF 6 LONG DRAWERS
- 241 A 3ft all-brass FRENCH BEDSTEAD with square pillars and rails, patent wire spring mattress, hair overlay, bolster and a pillow
- 242 The companion



- 243 Well made mahogany and inlaid BED CHAMBER SUITE of a 6ft wardrobe with sliding trays and drawers, enclosed by pair of panel doors and bevelled plate glass ditto, pedestal dressing table with drawers and swing glass over, washstand with marble top and ditto back, 3 chairs, pedestal chamber cupboard, and a towel airer
- 244 A 6ft mahogany WARDROBE with dress hooks, sliding trays drawers, panel and plate glass doors
- 245 Mahogany chest of 5 drawers
- 246 A 3ft 6 all brass FRENCH BEDSTEAD with square pillars and rails, box spring mattress, and a hair top overlay
- 247 A 3ft 6 mahogany wardrobe with sliding trays, &c., enclosed by a plate glass door and drawer under
- 248 A Chippendale mahogany double chest of 6 long and 3 short drawers, fitted with secretaire
- 249 An antique mahogany commode tray top washstand, and a ditto boot and shoe horse
- 250 Ditto chest of 5 drawers
- 251 Ditto washstand, and 9 pieces of toilet fittings
- 252 Mahogany upright chest of 6 drawers
- 253 A 3ft mahogany and inlaid washstand with marble top
- 254 Mahogany pedestal chamber cupboard with marble top
- 255 A 5ft brass FRENCH BEDSTEAD with roll-up wire spring mattress, and 2 top overlays with extra white cases
- 256 Well made 3ft 6 mahogany wardrobe with dress hooks, plate glass door and 2 drawers under
- 257 Superior MAHOGANY CHEST OF 5 DRAWERS with columns at sides and a BOOKCASE over with shelves, drawers and panel doors
- 257\* Mahogany enclosed washstand with basin, &c., 2 drawers and panel doors under
- 258 Pair of wide and lofty blue silk rep window curtains with handsome flower pattern top border
- 259 Ditto lot
- 260 Ditto lot
- 261 Pair of wide and lofty green velvet bordered window curtains
- 262 Large ditto table cover with fringe border
- 263 Large green cloth table cover with needlework and ball fringe border
- 264 Pair of very wide lofty corded green velvet window curtains
- 265 Pair of smaller ditto
- 266 A wide and lofty blue velvet portiere curtain, and a pair of curtains, to match
- 267 Large crimson plush table cover with fringe border, and a damask table cover



- 268 An Agar carpet, 19ft by 14ft
- 269 Large Indian rug
- 270 A brass square rail club fender, top in leather
- 271 A carved walnut frame DINING ROOM SUITE in saddlebags of a couch, 2 easy chairs and 6 small chairs
- 272 A 7ft 6 walnut sideboard with drawers, &c., panel doors and back with plate glass panels
- 273 Walnut overmantel with shelves and plate glass panels
- 274 A centre settee in walnut frame in blue tapestry
- 275 Carved walnut frame chair in tapestry
- 276 A 6ft Jacobean style carved dark oak SIDEBBOARD with 2 drawers, panel doors and backboard over
- 277 Walnut frame settee, spring stuffed in crimson plush and extra cover
- 278 A stained walnut enclosed print case
- 279 Walnut wine cooler on pillar and claws
- 280 Revolving top music stool in tapestry on carved pillar and claws and a carved wood music canterbury (a.f.)
- 281 A 4ft 6 walnut bookcase with shelves, enclosed by glazed doors
- 282 Walnut tea table with 4 flaps, and a ditto 2-tier stand
- 283 Lady's gilt writing table with Vernis Martin panel
- 284 A 4ft walnut frame settee, and 2 ditto frame chairs, in tapestry
- 285 Three walnut frame occasional chairs, in stamped velvet
- 286 Walnut 2-tier book table, and a ditto 3-tier music rack
- 287 Walnut cabinet with shelf, enclosed by sliding glazed doors
- 288 Walnut picture easel
- 289 A crimson and light ground Turkey carpet, 15ft 7 by 12ft 3
- 290 Bordered Persian rug
- 291 A polished steel and ormolu mounted curb fender, set of fire implements and a pair of coal tongs
- 292 A ditto fender, set of fire implements and a pair of extra tongs
- 293 Walnut and brass mounted coal purdonium and scoop
- 294 Large size gong with beater on oak stand
- 295 An invalid's walnut frame chair with cane seat, forming a couch with 3 hair cushions
- 296 Two pairs of marone Italian cloth window curtains
- 296\* Two pairs of green ditto
- 297 Walnut round revolving music stool
- 298 A 6ft walnut SIDEBBOARD with drawers and panel doors backboard over with bevelled plate glass panels
- 299 Set of 6 walnut frame chairs, hair stuffed, in silk and extra loose covers
- 300 Superior made burr-walnut and inlaid centre table with shaped top on carved frame and claws



- 301 Circular walnut and marqueterie table on carved claws
- 302 Walnut music canterbury with drawer containing music
- 303 Set of 8 carved walnut frame chairs with oval stuffed backs and seats, in satin
- 304 An easy chair with loose cushion, in crimson silk
- 305 A superior quality Turkey carpet, green ground and colored border and centre, 17ft by 9ft
- 306 Set of 4ft 6 oak extending frame DINING TABLES with patent screw and 3 extra flaps
- 307 A 7ft pollard oak pedestal SIDEBOARD with drawers, panel doors, backboard over with plate glass panels
- 308 A 5ft pollard oak 3-tier dinner wagon with 2 drawers under
- 309 Ditto davenport with drawers and stationery case over
- 310 Set of 8 pollard oak frame dining room chairs, seats and backs in pegamoid (1 a.f.)
- 311 A 4ft 6 brown oak 3-tier dinner wagon
- 312 Set of oak office pigeon holes with tambour front
- 313 Large plate glass fire screen in oak frame
- 314 Fumed oak dining table with patent screw (no leaf)
- 315 A large bordered Oriental carpet
- 316 A brass fender, pair of ditto dogs, set of implements and a ditto fire screen
- 317 Forty-three brass angular shape stair rods
- 318 A 6ft superior made oak sideboard with drawers, &c. panel doors and back with plate glass panel and canopy top
- 319 Set of oak dining tables on spiral legs, patent screw and 7 extra leaves and a flap stand
- 320 Set of 8 and 2 elbow carved oak dining room chairs with spiral columns, stuffed backs and seats in morocco
- 321 A 4ft dark carved oak cabinet with shelves, columns at sides and glazed doors
- 322 Pair of ball frame easy chairs with 4 loose cushions in saddle bags
- 323 Rosewood frame easy chair with 2 cushions in Geneva velvet and a feather cushion
- 324 Ditto music stool in silk and plush
- 325 An oak upright chest for papers with revolving front
- 326 Set of 6 spindle rail back chairs with rush seats
- 327 Ditto lot
- 328 An oak overmantel with china cabinets and plate glass panel
- 329 A 6ft oak bookcase with shelves, glazed doors and 3 drawers under
- 330 Dark oak 2-flap gate leg table



- 331 A 4ft ditto dresser with 2 drawers, panel doors and shelves over
- 332 Set of 4 and 1 arm ditto frame chairs with rush seats
- 333 An oak and brass bound jardinier on stand, and 2 chairs with cane seats
- 334 An oak arm chair with adjustable back and loose cushion in velvet
- 335 An antique dark oak square top table on turned legs and stretcher below
- 336 A 3ft 6 brown American oak roll top desk with drawers and 1 key
- 337 An antique carved oak chair with stuffed back and seat in crimson velvet
- 338 A carved oak octagon shape table on pillar and block
- 339 A 7ft 6 oak settee in Oriental tapestry
- 340 An oak octagon shape table in leather
- 341 Pair of crimson chenille window curtains
- 342 A small round table and a 2-tier ditto
- 343 A 3ft 6 carved oak table with drawer
- 344 A 3ft 6 oak umbrella stand with liner
- 345 A 4ft oak roll-top desk with interior fittings, drawers and 2 keys
- 346 An oak frame library chair in leather
- 347 A Chesterfield settee, spring stuffed in green tapestry
- 348 A divan easy chair, spring stuffed in tapestry
- 349 A corner chair with loose seat and a fancy occasional chair
- 350 An oak box on stand
- 351 Oak reading stand, and a ditto music canterbury
- 352 Birch and inlaid 2-flap Sutherland table
- 353 Carved mahogany frame settee in pegamoid
- 354 Seven ditto frame chairs in pegamoid, various (1 a.f.)
- 355 Stained mahogany occasional table on shaped legs with stretcher below, and a walnut music canterbury
- 356 Mahogany 3-tier whatnot
- 357 A 17in old English mahogany octagonal wine cooler with brass bands on turned supports
- 358 A 2lin mahogany organ stool with open supports
- 359 A 2lin mahogany revolving bookcase with rail sides
- 360 An ormolu fire screen with stained glass panel, semi-circular brass ash pan, and an iron and copper mounted ditto
- 361 Set of 6 mahogany frame dining room chairs in leather (a.f.)
- 362 Ditto lot
- 363 Ditto frame easy chair in leather (a.f.)
- 364 A Chippendale occasional table with stretcher



- 365 A 3-plate chimney glass in gilt frame
- 366 Five carved rosewood frame chairs with loose seats in tapestry
- 367 An octagon shape table in blue plush and a footstool in reps
- 368 Mahogany frame easy chair in saddle bags
- 369 Four mahogany frame chairs in crimson damask, and a stool in ditto
- 370 Mahogany frame couch, spring stuffed in pegamoid
- 371 A carved rosewood frame easy chair in ditto
- 372 A small Chesterfield sofa, spring stuffed in saddlebags
- 373 Pair of ebonized frame easy chairs in ditto
- 374 A 3ft 4 mahogany octagon shape table with stretcher
- 375 An ebonized frame couch, spring stuffed in crimson velvet
- 376 Mahogany coal purdonium
- 377 A 5ft superior made mahogany BOOKCASE with shelves, enclosed by glazed doors, panel doors under, surmounted by a dome shape cornice
- 378 Mahogany hanging corner china cabinet with silk curtains and glazed doors
- 379 Pair of ebonized curious design frame chairs, in crimson velvet
- 380 Ditto frame easy chair, in reps
- 381 Iron dog grate, pair of large fire dogs, pair of small ditto, and 2 fire implements
- 382 Fine mounted wolf skin hearth rug
- 383 Large black fur hearth rug, cloth lined
- 384 Mahogany square top table on turned legs
- 385 Ditto 3-tier dinner wagon
- 386 A 4ft solid mahogany writing table with 4 drawers and leather top
- 387 A grandfather's mahogany winged arm chair, upholstered in tapestry
- 388 Four Sheraton style mahogany chairs, upholstered in leather
- 389 Four carved oak high back chairs, in tapestry
- 390 Four Chippendale style mahogany carved back chairs, in tapestry
- 391 A 3ft mahogany bookcase with glazed and panel doors
- 392 Square mahogany table, and a brass fender
- 393 Six mahogany frame chairs, in leather
- 394 Two Dutch marqueterie frame elbow chairs (1 a.f.) and a ditto frame standard chair in tapestry
- 395 The bottom part of a mahogany and inlaid bookcase with drawer and panel door under
- 396 Full size mahogany frame BILLIARD TABLE with massive slates by THURSTON, mahogany marking board, cue rack, 2 long cues, 9 short ditto, rest and an holland cover



- 397 A 5ft mahogany writing table with 6 drawers, oak lined on turned legs
- 398 A 4ft mahogany pedestal writing table with drawers, top lined with leather
- 399 A 30in iron safe with drawer, 2 keys, by GRIFFITHS and a deal stand for ditto
- 400 A new Oliver No. 9 TYPEWRITER, latest model, and a cover
- 401 An Oliver typewriter and cover
- 402 A Yost typewriter
- 403 Pair of leopard skin rugs with heads
- 404 A brown bear skin rug with head and lined with cloth
- 405 A well made pair of large DIVAN EASY CHAIRS, spring and hair stuffed in blue flower tapestry
- 406 A 7-octave UPRIGHT GRAND PIANOFORTE in ebonized case, by W. KIPPS
- 407 A 2ft 6 Chippendale style mahogany CHINA CABINET with shelves and glazed doors
- 408 A mirror in antique carved and gilt frame
- 409 A chimney glass in plain gilt frame
- 410 Lady's tulipwood and inlaid shaped top writing table with drawer and shaped legs
- 411 A 7-octave brilliant tone iron frame UPRIGHT GRAND PIANOFORTE, in mahogany case, by CRAMER
- 412 A bear skin rug
- 413 A fox's skin carriage rug, mounted on brown cloth
- 414 A 7-octave COTTAGE PIANOFORTE in rosewood case, by COLLARD & COLLARD
- 415 A 5ft 9 superior made ebonized and inlaid DRAWING ROOM CABINET with glazed doors, shelves and fluted columns over
- 416 A 4ft 3 ditto, to match
- 417 A 5ft 4 dwarf ditto with glazed doors
- 418 An ebonized frame couch, to match, spring and hair stuffed in reps
- 419 Pair of easy chairs in corduroy velvet
- 420 Pair of ditto in tapestry
- 421 An octagon shape table, to match, in leather, and a pair of footstools in corduroy
- 422 A 7-octave iron frame boudoir GRAND PIANOFORTE in rosewood case, by JOHN BROADWOOD & SONS
- 423 A 6ft ebonized and ormolu mounted and tortoiseshell CHINA CABINET with glazed and panel doors
- 423\* Mantel clock in black marble case with striking movement
- 424 A 3ft 6 French ebonized, amboyna-wood and ormolu mounted writing table with drawer, top lined with leather on shaped legs



- 425 An ebonized hanging china cabinet, lined with glazed door
- 426 An Indian finely carved hardwood circular table on claw feet with heads
- 427 An ebonized and gilt occasional table on end standards
- 428 A Louis XIV. ebonized and ormolu mounted serpentine front writing table on shaped legs, top lined with cloth
- 429 Pair of ebonized and gilt 2-tier pedestals
- 430 A square ebonized and inlaid centre table with drawer
- 431 Two ebonized corner brackets with bevelled plate glass panels
- 432 An ebonized music cabinet with glazed door and ormolu mount
- 433 A 3ft ebonized writing table with drawers and plate glass panel
- 434 An ebonized and gilt chair in leather and a walnut frame ditto in tapestry
- 435 A 5ft ebonized and burr-walnut CHINA CABINET with glazed and panel doors and ormolu mounts
- 436 A 7-octave UPRIGHT GRAND PIANOFORTE in burr-walnut and inlaid case, by GOLDSCHNIEDERS SCHONE
- 437 A 5ft 6 side settee, spring stuffed in crimson plush and tapestry
- 438 Ebonized frame easy chair, spring stuffed in blue velvet
- 439 The companion
- 440 A 7-octave powerful tone iron frame GRAND PIANOFORTE in rosewood case, by ERARD
- 441 A 4ft walnut CHINA CABINET with shelves and glazed doors
- 442 A 7-octave UPRIGHT GRAND PIANOFORTE in burr walnut case, by JOHN BROADWOOD & SONS
- 443 Walnut and gilt revolving top card table, lined with cloth
- 444 A circular gameboard with 6 puffs
- 445 A well upholstered 3 seat CHESTERFIELD SETTEE, spring and hair stuffed in pink silk damask and a pair of divan easy chairs
- 446 A 4-fold screen, lined with satin
- 447 A 7-octave UPRIGHT PIANOFORTE in figured walnut case by SPENSER & SONS
- 448 Well made carved mahogany Chippendale style frame OVER-MANTEL with bevelled plate glass panels, shelves for china and fretwork galleries
- 449 A bamboo and lac-japanned decorated 2-tier tea table, ditto tray and a ditto table
- 450 A large 3 plate console glass in white enamelled frame
- 451 Fine bevelled mirror in carved black and gilt frame
- 452 A 7-octave iron frame semi-grand pianoforte in rosewood case by JOHN BROADWOOD & SONS



- 453 Mahogany tea table with fall-down flaps
- 454 Mahogany Chippendale style urn table on pillar and claws (a.f.), and a mirror in oval mahogany and inlaid frame
- 455 Ebonized and ormolu mounted miniature nest of 5 drawers with panel door and key
- 456 A French mahogany and ormolu mounted 2-tier table with marble top (a.f.), and a brass gallery
- 457 A 7-octave COTTAGE PIANOFORTE in burr-walnut case, by JOHN BROADWOOD & SONS
- 458 A 65-note Cecilian piano player in rosewood case
- 459 A hornless gramophone machine in oak case with double spring Swiss motor and 10in turntable with sound box complete
- 460 A large mahogany dining room or library mantelpiece clock in black and green marble case
- 461 Very large blue and white china palm jardiniere with raised flowers, &c., cracked and an ebonized stand
- 462 A finely modelled metal figure of Negress, holding a tray, 43in high, and a white enamelled pedestal
- 463 A handsome embossed and gilt ewer on dish
- 464 Ditto lot
- 465 Large electro-plated salver with handle and a green bronze cover
- 466 An expensive mantelpiece clock in red marble case with bronze bust and mounts
- 467 Pair of bronzed cupids, fitted for electric light
- 468 Pair of Sevres china and ormolu 3-light candelabra
- 469 Pair of Burmese 2-light candelabra
- 470 Three brass ornaments with handles, ditto chestnut roaster and a ditto stand
- 471 Pair of fine green ground Sevres vases, decorated in flowers with ormolu mounts and lily lights
- 472 Pair of ruby glass and ormolu lily lights (1 a.f.)
- 473 Very fine old Satsuma vase and cover, decorated in figures, &c.
- 474 Pair of handsome Japanese Imari decorated vases and covers
- 475 A variegated glass jug, and 5 tumblers in a wicker basket
- 476 A 1½in. finely carved ivory figure of a female holding fan and sunshade, signed
- 477 A 7½in. ditto, male figure with basket of fruit, signed
- 478 A 6¾in. ditto, with basket, holding pipe, signed
- 479 A 7½in. ditto, Town Crier, signed
- 480 A 6½in. ditto with fish and poultry, signed
- 481 Pair of colored Oriental china bowls, brass electric reading lamp with shade, and 2 Oriental swords



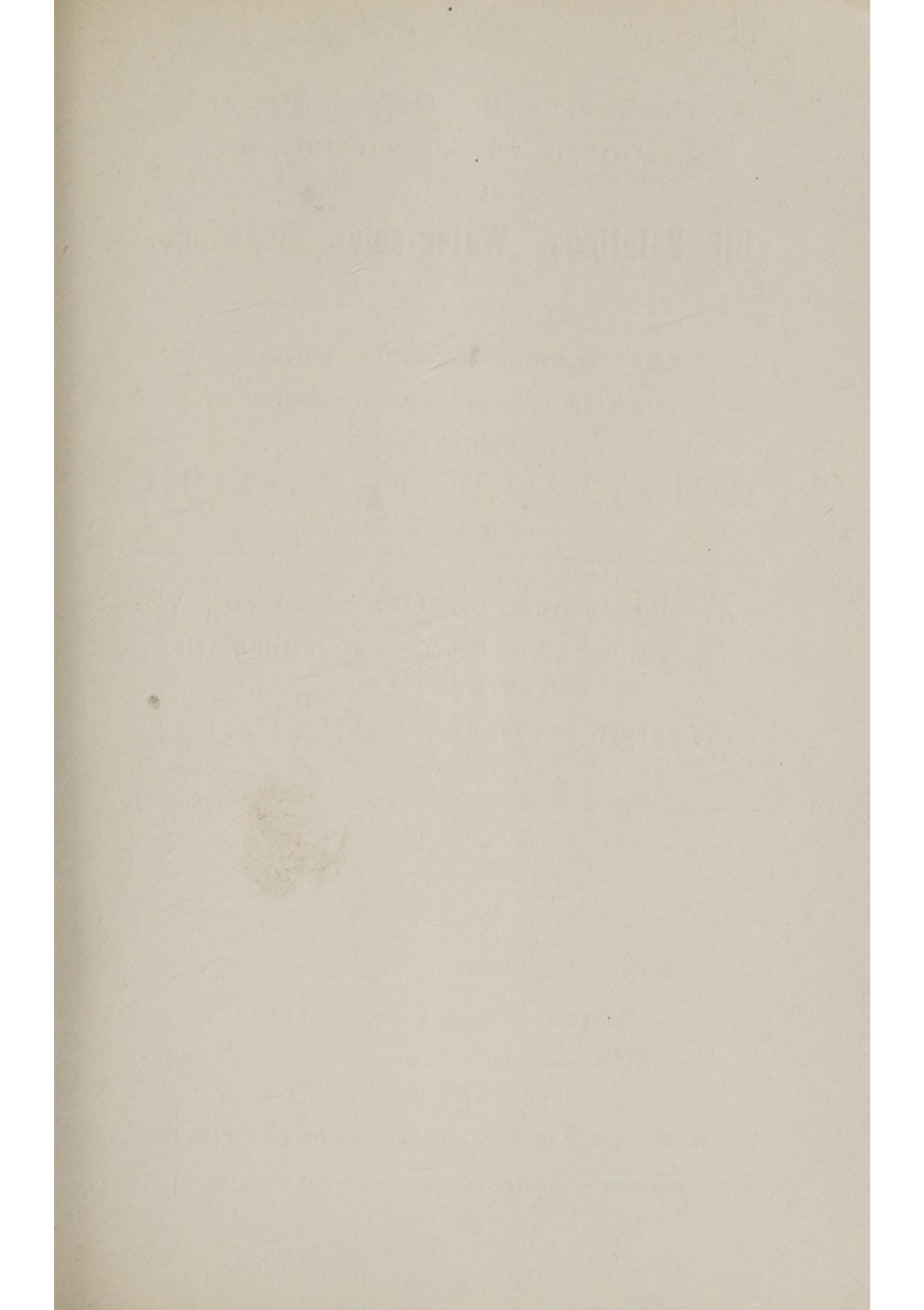
- 482 Four Dresden china compotiers, painted in birds and flowers
- 483 Pair of china candlesticks with raised flowers (1 a.f.), and a pair of china salt cellars
- 484 Ormolu and enamel frame mirror, hand ditto, pair of field glasses, 2 silver back brushes, 3 plated trays, 4 ash trays, box of bottles and oddments
- 485 A black Wedgwood bowl, Satsuma ware ditto, 4 vases, 2 small Oriental bottles, gilt ditto, 4 turquoise blue vases, and 1 other
- 486 Pair of Indian engraved brass bottles, smoking cap, Indian basket, brass inkstand, brass mounted tray, miniature of a Gentleman, plated cigar box, ebonized dish stand, magnifying glass, cat's head, and a small book
- 487 Two pink glass vases, 15 glass flower bowls and vases, 2 flower stands, ink ditto, 4 tumblers, 4 water bottles, and 4 wine glasses
- 488 Handsome china water tank on brass stand and a ditto basin
- 489 Blue enamelled china jardiner, ditto pilgrim shape vase, pair of ditto vases and a pair of ditto spill vases
- 490 A tall green art ware candlestick, green ground vase, large jardiner, art ware ditto on stand and 2 vases with covers
- 491 White and gilt china bowl with cupids and 7 blue and white Oriental vases
- 492 A china tea service with flower decorations—50 pieces
- 493 Two china plates, 8 articles of Dresden pattern china, cup and saucer, china dog, Delft table, ditto chair, 3 Oriental covers and 5 articles, various
- 494 Two engraved copper trays
- 495 Hanging clock in carved wood case and an ebonized coal vase
- 496 Biscuit bowl, coffee maker, cut glass claret jug with plated mount, and an electric lamp
- 497 Binoculars in leather case
- 498 Carriage clock in case
- 499 Thirty-six gramophone records
- 500 Fifteen new double faced gramophone records
- 501 Twelve ditto and a sound box
- 502 A nickel-plated hot breakfast dish with lamp attached
- 503 Plated tea and coffee service—4 pieces, and a 2-handle tray
- 504 Pair of silver plated candlesticks, pierced fish slice, and a pair of lobster crackers,
- 505 Silver plated hot water jug, ditto candlestick, and a ditto taper
- 506 Silver plated soup tureen and ladle
- 507 Two silver plated syphon stands
- 508 Silver plated cruet with bottles and a ditto sauce stand
- 509 Ditto tea pot, electric column stand and a string box



- 510 An electro-plated tea and coffee service, consisting of a coffee pot, tea ditto, sugar basin and a cream ewer
- 511 An electro-plated tea and coffee service, consisting of a coffee pot, tea ditto, sugar basin and a cream ewer
- 512 An oak and plated inkstand with cut glass bottle
- 513 Two solid silver hall-marked rose bowls, weighing about 35 ozs on plinths
- 514 A French silver cake tray
- 515 An 8-day carriage clock
- 516 Lady's massive fine gold bracelet, set with turquoise, weighing 31 dwt full
- 517 Three solid silver boxes and solid silver shoe horn, weighing about 10 ozs.
- 518 Twelve solid silver tea spoons, weighing 12 ozs
- 519 Massive gold bracelet, weighing 35 dwt. full
- 520 Three 18-carat diamond studs and pearl stud in case
- 521 A gentleman's single stone diamond ring
- 522 An oak case of 2 pairs of buckhorn handle carvers and a steel
- 523 Two lady's wrist watches with straps
- 524 Five silver watches
- 525 Six metal watches and a silver ditto
- 526 Four metal watches
- 527 W. R. BROOKS—A clever water-color drawing—The Wreck in gilt frame signed
- 528 RICHARDSON—Ditto—Landscape with Cattle, signed
- 529 Four colored pictures in frames, 8 smaller ditto, 6 frames, and a blotting pad
- 530 An engraving—English Merrymaking in Olden Times, ditto—Theatrical Subject, and a colored ditto—Queen Victoria in her Robes, framed
- 531 Oil painting of a Jockey and Horse, and a set of 4 Hunting Subjects
- 532 An antique Bible with engravings, History of the United States, 8 vols, 4 others and a blotter

FINIS







**At the Rooms, 65, Oxford Street, W.**

On FRIDAY, the 7th day of NOVEMBER, 1919,

At FIVE o'clock,

**Oil Paintings, Water-color Drawings,  
FRAMES, &c.**

---

**At the Rooms, 10, Soho Square, W**

On TUESDAY, the 11th day of NOVEMBER, 1919,

At TWELVE o'clock,

**HOUSEHOLD FURNITURE  
AND EFFECTS.**

---

**At the Rooms, 65, Oxford Street, W.**

On THURSDAY, the 13th day of NOVEMBER, 1919,

At ELEVEN o'clock,

**HOUSEHOLD FURNITURE  
AND EFFECTS.**

---

Advertisements of above will appear in the Telegraph, Times,  
and other papers, prior to Sale.

---

**Valuations for Probate, Trade and Transfer.**

**SURVEYS FOR DILAPIDATIONS,**

Compensation Claims arising from Public Bodies Railway  
Companies, or Local Boards,

**THE DISPOSAL AND LETTING HOUSES, LAND AND ESTATE.**

---

BARNARD & CRANNIS (P. B. CRANNIS), Printers 36 Frith Street, Soho, W. 1.