

Sales catalogue 455: Tregaskis

Publication/Creation

1899-1900

Persistent URL

<https://wellcomecollection.org/works/upqtufav>

License and attribution

This work has been identified as being free of known restrictions under copyright law, including all related and neighbouring rights and is being made available under the Creative Commons, Public Domain Mark.

You can copy, modify, distribute and perform the work, even for commercial purposes, without asking permission.



Wellcome Collection
183 Euston Road
London NW1 2BE UK
T +44 (0)20 7611 8722
E library@wellcomecollection.org
<https://wellcomecollection.org>

WA/HMM/AM/13a/122/40

No. 455.]

OLD BLUE AND WHITE CHINA.

[1899-1900.]

TELEGRAMS

"TREGASKIS-LONDON"



SUITABLE
FOR
PRESENTS.

TELEGRAMS

"TREGASKIS-LONDON"



Caxton Head Catalogue

of an INTERESTING COLLECTION of

ANTIQUITIES, CURIOSITIES,

Articles of Domestic Use of a Bygone Age,

BOXES and CASKETS, BRONZES,

Devotional and Ethnographical Objects,

IRON, IVORY CARVINGS, MINIATURES,

JAPANESE POTTERY, BRONZES AND LAC,

A VERY FINE MUSICAL BOX,

NAPOLEON SOUVENIRS, OLD DUTCH TILES,

CHINA and POTTERY,

An Interesting Collection of Tobacco Pipes, &c.;

Offered for Sale by

J. & M. L. TREGASKIS,

at their House at the Sign of the "CAXTON HEAD,"

232, HIGH HOLBORN, LONDON, W.C.

* * The articles mentioned in the Catalogues issued by J. & M. L. TREGASKIS are described in words as few as may be necessary to call attention to their more obvious merits; personal inspection alone can reveal their utmost worth. Visits from interested readers of the Catalogues will therefore be welcomed at the "CAXTON HEAD" where, besides the items set down in the Lists regularly published, large stores of Valuable Books, Book-bindings, Ancient Manuscripts, Curiosities and Antiques, await examination. J. & M. L. TREGASKIS will, when possible, forward selected items on approval if a visit to their house cannot be conveniently made, one week after the issue of their Catalogue, and they will spare no effort to assist intending purchasers to a satisfactory choice.

ANTIQUITIES.

MEXICAN ANTIQUITIES.

The following items were brought from Mexico and exhibited at the Anthropological Institute by OSBERT H. HOWARTH, C.E., F.R.G.S., as illustrating his paper on "The Asiatic Element of the Tribes of Southern Mexico," read at the meeting of the Institute, April 14th, 1896. They are all of types not commonly found, and present such ethnographic variations from the common and accepted types as to have led Mr. HOWARTH to the opinions suggested in the title of his address to the Institute.

2708 God of the Air and Birds, large terra-cotta figure, with curious circular hat, having an upright pole in the centre, seated, arms folded resting on knees. The nose forms the upper mandible and the lip the lower mandible of a bird with large tongue between. The figure was found broken, but has been restored. From Matamoros, State of Tamaulipas; 15½ in. high, **6 guineas**

The knees of this figure are blackened as if they had been subjected to fire torture, a common practice of later-day peasants, who still regard these figures as sacred, but who do not hesitate to punish them if their supplications remain unattended to.

2709 Mask, terra-cotta, a man's head with smaller head above it, probably the head of the man's patron deity; a votive offering; from the Zapoteca Indians, Tlaxcoahuaja, near Oaxaca; 4 in. by 3 in., **7/6**

2710 Mask, another votive offering, part (¾) of a figure of a man holding an emblem in right hand; from Tlaxcoahuaja; 4 in. by 2½ in., **7/6**

2711 Mask, another, head of a man with head of a deity (?) above it, a fragment with edges broken away; from Tlaxcoahuaja; 3½ in. by 2 in., **5/-**

2712 Pietograph, a very curious drawing in red and black on deer hide representing seven men approaching a pyramid, on top of which an idol is seated in a shrine adorned with masks; from an altar in the Temple Caves of Tepecuacules, near Cerro Bravos, State of Guerrero; 14 in. by 20 in., **2 guineas**

Three of the figures are dressed as Indians with feather headdresses, and these appear to be conducting the other four, who are of foreign type, and who bear above their heads Aztec hieroglyphs indicating their names. The scene is surrounded by a decorative border of flames and scrolls.

2713 Pietograph, drawing in red and black on deer hide, a square shrine and god, with five men standing beside it; from the altar in the Temple Caves of Tescuitlatlan, near Cerro Guzman, State of Jalisco; 14 in. by 23 in., **2 guineas**

The shrine to the left of the drawing is ornamented by snakes on each side and above the god, and on the top by a row of upright figures formed of human faces with high headdresses on bodies made of circles above ovals, and is guarded on the right by a ferocious creature with a vessel of flames above his head. In front stands a man with uplifted warning finger and two Indians who seem to be dissuading two strange chiefs from approaching; the latter have names above their heads in Aztec hieroglyphs. The whole is surrounded by an ornamental border.

2714 Pietograph, drawing in red and black on deer hide, a god seated on a great pedestal with water all around and four boats filled with

figures; from the Temple Caves of Tepechiapan, State of Tlaxcala; 11½ in. by 23½ in., **2 guineas**

On the right of the central figure of a deity two punt like boats filled by Indians and what appear to be foreign chiefs are approaching, while coming from the opposite direction are two more filled with Indians of hostile mien. An ornamental border in red encloses the scene.

2715 Pietograph, drawing in red and blue on deer hide, a figure of a god seated; and on the reverse side a later drawing showing decided European influences; from the altar in the Caves of Tlacuilocan, State of Tlaxcala, 11½ in. by 16½ in., **£1 15s**

In the later drawing one of the figures is making a present to a seated Indian chief, while two others appear to be playing musical instruments. The border round this scene strongly suggests Spanish influence.

2716 Sacrificial Box and cover, terra-cotta, oblong, the receptacle for the heart of a human victim offered to the Sun God, containing a clay "Calendar Stone" set in the lower side; from the Temple Caves of Tuxpan, State of Vera Cruz, Mexico; 6½ in. high, 11½ in. long, 7½ in. wide; **10 guineas**

The cover is a flat slab of baked clay with an inch wide raised ornamental border around the outer edges, enclosing the dismembered parts of a human body modelled in clay, and disposed over the whole surface. The box has a similar band of ornament round each of the sides, and within the panels thus formed are *graffito* figures coloured in parts, the head of the Sun God in one of the larger panels and a profile head with the emblem of speech issuing from the mouth on the other, both of very distinct Asiatic type; at the ends a radiated volute and a winged volute. Inside, on the four sides are curious figures in stamped relief, probably genii of the four points of the compass, and at the bottom a very rare example of a form of calendar stone

2717 Sacrificial Vase, stoneware, cylindrical, one side fashioned in form of a seated deity (Maya type) with square clamp over the nose, seated, hands on knees; (one arm and knee missing); from Mitla, State of Oaxaca, 7½ in. high, **£1 5s**

2618 Toltec Idol, terra-cotta, high semi-circular headdress of plumes standing, arms by sides; the lower part forming a whistle; from Tamaulipas; 6½ in. high, **£1 5s**

2719 Toltec Rattle, red terra-cotta, burnished, unusual form, spheroidal, with design in black; from Peñon, near Lake of Texcoca; 3 in. dia., **10/6**

2720 Toltec Stamp, terra-cotta, very large size, oblong, with concentric circles and a band of key pattern in relief; for stamping textiles; from Peñon, near Lake of Texcoca; (repaired) 5½ in. by 3½ in. **15/-**

ANTIQUITIES—Continued.

MISCELLANEOUS ANTIQUITIES.

2721 **Antique Shell Cameo**, head of Caesar, laureated, oval, set as a scarf brooch in gold, 1½ in. high, 35/-

2722 **Archaic Intaglio**, cabochon sard, a female head (chipped) 2/6 *Rogers Collection*

2723 **Babylonian Libatory Dish**, oblong, 10 in. long, 4½ in. wide, 2½ in. deep, 5 guineas *Blau Collection*

This dish appears to have been fashioned from a water-worn yellow pebble by grinding with stone and grit. It was probably used for religious ceremonies, and must be regarded as a very rare and interesting object.

2724 **Babylonian Seal**, hematite, seated figure of the moon god *Sin*, with priest and worshipper, and inscription, 30/- *Blau Collection*

2725 **Babylonian Seal**, hematite, seated figure of *Abzu*, the god of the primeval abyss, a priest and worshipper, and three lines of inscription, *The Son of Ur-Abzu*, 25/- *Blau Collection*

2726 **Babylonian Seal**, dark stone, seated figure of moon god *Sin*, and man presenting his wife, a goose and a scorpion behind the god, 18/6 *Blau Collection*

2727 **Babylonian Seal**, hematite, seated figure of moon god *Sin*, priest and worshipper, and lion and stag in combat, 12/6 *Blau Collection*

2728 **Babylonian Seal**, hematite, two men attacking a lion, 10/6 *Blau Collection*

2729 **Babylonian Seal**, jasper, Heabani (?) slaying a bull and Gisdubar (?) in conflict with lions, 21/- *Rogers Collection*

2730 **Babylonian Vase**, hematite, barrel shape, the sides deeply cut with seven horizontal flutings equally disposed between the rim and base, (small chip in rim); 3¼ in. high, 2½ in. dia., 6 guineas *Blau Collection*

An important and interesting object, and exceedingly rare.

2731 **Chaldean Tablet**, a stone fragment, inscribed in five vertical lines of Linear writing found at Warka; 2 in. by 1¼ in., 10/6 *Blau Collection*

2732 **Hemispherical Seal**, hematite, a bull, with a hump on its back, and the crescent moon, within a circle of dots, 25/- *Blau Collection*

2733 **Hemispherical Seal**, hematite, a scorpion, 10/6 *Blau Collection*

2734 **Hemispherical Seal**, hematite, two men side by side, rudely cut, 10/6 *Blau Collection*

2735 **Hemispherical Seal**, white opaque stone, an antlered stag reclining, 8/6 *Blau Collection*

2736 **Hemispherical Seal**, brown agate, stalk and leaves, surface worn, 5/- *Blau Collection*

2737 **Lentoid Seal**, hematite, two scorpions, Archaic work, 10/6 *Blau Collection*

2738 **Lentoid Seal**, white opaque stone, rudely cut animal, 7/6 *Blau Collection*

2739 **Lentoid Seal**, hematite, symmetrical device, 5/- *Blau Collection*

2740 **Mummified Ibis** (*Ibis Religiosa*), a fine perfect specimen, 18½ in. long, 25/- *Rogers Collection*

2741 **Mummified Ibis**, another, 17½ in. long, 15/- *Rogers Collection*

2742 **Mummified Hawk**, a good specimen, showing the head form very clearly, 15 in. long, 25/- *Rogers Collection*

2743 **Mummified Cat**, a fine perfect specimen shewing ornamental arrangement of folded wraps, 15 in. long, 22/6 *Rogers Collection*

2744 **Mummified Cat**, another perfect specimen, 12 in. long, 21/- *Rogers Collection*

2745 **Necklace and Pendants**, three pronged hair pin, another pin, three finger rings, two ear-rings, a fish hook and toy prochous, all bronze, and all apparently from a single intermit of central Italy; enclosed in gold tooled green morocco case, silk lined; case 13 in. by 10½ in., 5 guineas *Rogers Collection*

The necklace is composed of double linked chain with 14 triangular and ovate pendants linked at intervals, and a large centre one with finely worked mask. The three finger rings are of varied designs; a broad plain shank with engraved bezel, a narrow beaded ring, and one with ornamented bezel. A very interesting and complete collection of lady's ornaments.

2746 **Sassanian Bead Seal**, white chalcedony, a scorpion, 18/6 *Blau Collection*

2747 **Sassanian Bead Seal**, milky quartz slightly opalescent, a bull reclining and a star, 12/6

2748 **Sassanian Bead Seal**, red sard, a mask (surface chipped), the ring part of the bead fluted in ornamental device, 10/6 *Blau Collection*

2749 **Sassanian Bead Seal**, hematite, a symbol apparently composed of Pehlevi characters and the crescent moon, on the opposite side of the bead ring a lozenge, 10/6 *Blau Collection*

2750 **Sassanian Bead Seal**, sardonyx, a bird, 8/6 *Blau Collection*

2751 **Sassanian Bead Seal**, red sard, a leaf, 5/- *Blau Collection*

2752 **Sassanian Bead Seal**, white chalcedony, a leaf, 5/- *Blau Collection*

2753 **Sassanian Bead Seal**, pink cornelian, a leaf, 5/- *Blau Collection*

2754 **Sassanian Bead Seal**, white opaque stone, a leaf, 5/- *Blau Collection*

2755 **Scaraboid Seal**, pink chalcedony, a winged animal, very early work, 21/- *Blau Collection*

2756 **Scaraboid Seal**, white cornelian, a locust (?), very archaic style, 12/6 *Blau Collection*

2757 **Scaraboid Seal**, white amethyst, a fish, archaic cutting, 7/6 *Blau Collection*

ANTIQUITIES—Continued.

2758 **Scaraboid Seal**, hematite, a fish, archaic cutting, 7/6 *Blau Collection*

2759 **Scaraboid Seal**, black and white streaked stone, with uncertain device, 5/- *Blau Collection*

2760 **Small Cippus**, early Chaldean style, white stone, with busts carved in relief on the front and edges, and an inscription in five lines on the back. Very curious work; 2½ in. high, 1½ in. wide, 1 in. deep, 30/- *Blau Collection*

ARTICLES OF DOMESTIC USE OF A BYGONE AGE.

2761 **Baccarat Cordial Set**, four cut glass triangular shaped bottles, fitting together on a circular ebonised stand with gilt pierced brass gallery, each bottle with gilt metal cork mounts representing various fruits, and the whole held together by a gilt metal clip in form of a snake; stand 8 in. dia., total height 14½ in., 7 guineas

2762 **Battersea Enamel Candlestick**, circular, fluted domed base, white, with detached sprays of flowers in colours, in nice condition, 7½ in. high, £2 7s 6d

2763 **Candlesticks**, brass, shaft tapering downwards, square pyramidal bases, 9½ in. high, pair £1 5s.

2764 **Coffee Mill**, square oak box with drawer, the corners carved as pillars, and panels with rosettes, fitted at the top with a brass circular hopper and iron handle, 6 in. square, 12½ in. high, 1 guinea

2765 **Coffee Mill**, brass cylindrical tube in two sections, the upper being the hopper, iron handle, 1½ in. dia. 7½ in. high, 6/-

2766 **Coffee Pot**, brass, compressed spherical shape as a tea pot, with tall cylindrical strainer fitting into the rim, quaint shape, 10½ in. high, 15/-

2767 **Coffee Pot**, stout brass, plain cylindrical shape, straight tapering spout, domed lid, 7½ in. high, 8/6

2768 **Curious Puzzle Padlock**, brass, shaped as a lion with tail upcurled and fitting into the head, very curious key, 2½ in. high, 3½ in. long, 15/-

2769 **Empire Brass Boat**, two handles, oval, on oval brass and copper base, the handles finely decorated in relief, and relief borderings round sides and on base; 9½ in. high, 13½ in. wide, 5½ in. deep, 15/-

2770 **Empire Candelabra**, a pair, each for four lights, brass, on triangular plinths of brass and bronze, 33 in. high, 12 Guineas

The base is a plain brass triangular socle with a receding moulding, from which rises the bronze sides of the plinth, ornamented with a raised brass caducens flanked by scrolls on each face and capped by brass; the shaft is circular, tapering upwards, decorated with relief design and terminates in a circular tray bearing an upright candlestick and three curved branches.

2771 **Knife and Fork Case**, box wood, carved on both sides with figures in compartments, and dated 1599; engraved silver band round the rim with lion masks and rings; 8 in. long, 5 guineas

XVI. Cent

The whole surface of this case is filled with minute carving; on one side is represented The Creation of Eve, The Temptation in Eden, The Expulsion, and David with the head of Goliath; on the other, scenes from the history of Esther, Nathan, Susannah, Solomon, and Samson. Along the sides are two couplets of a Dutch proverb, which may be translated:—"He who gains a penny and saves it, may

live on it when he becomes old. Had I minded this in my younger days, I should not have to complain in my old age."

2772 **Georgian Silver Vinaigrette**, oblong box with rounded edges, nicely engraved on lid, wreaths enclosing a shield and monogram L.R.; inner lid pierced, engraved, and gilt; hall mark 1826-7; 1½ in. by ¾ in., 17/6

2773 **Horn Lantern**, cylindrical, conical top, sides and top pierced iron, horn let in the door, handle on top and another at back; 8½ in. high, 10/6

2774 **Letter Puzzle Padlock**, iron, the lock constructed so that it can only be opened by arranging 5 brass wheels containing letters in such a way that a secret word is formed in a line; 2½ in. high, 2½ in. broad, 8/6

2775 **Nutcracker**, wood, carved as an egg shaped bowl springing from a calyx, covered with foliated ornament, with wooden screw, 7 in. long, 10/6

2776 **Nutcracker**, old English, brass, 3½ in. long, 4/6

2777 **Old Dutch Box**, brass, oval, with domed lid and base, on three ball feet; on front side repoussé design, two amorini supporting a crown with star beneath; 3½ in. high by 5 in. by 3½ in., 6/-

2778 **Old Dutch Canister**, brass, cylindrical, with sloping shoulders, flat lid, 8½ in. high, 5/-

2779 **Old Dutch Kettle and Stand**, brass; kettle circular, ribbed body nice shape; hexagonal stand with incurved pierced sides and brass pierced platform; 13½ in. high, 25/-

2780 **Old English Basting Ladle**, plated brass, pear shaped bowl, iron stem, hooked at the end; 20 in. long, 10/6

2781 **Old English Flesh Fork**, iron, two curved prongs, shaped haft, long stem terminating in open work heart shaped ornament; 17 in. long, 12/6

2782 **Old English Flesh Fork**, iron, two pronged, shaped haft and hooked stem, engraved F.V.H. 1752; 18½ in. long, 12/6

2783 **Old English Toasting Fork**, iron, three prongs, shaped haft and end of stem and both engraved in diced style, hooked end; 20½ in. long, 12/6

2784 **Old English Toddy Ladle**, the bowl and socketed haft silver, with a Charles II. coin set in the centre, dated 1678; twisted whalebone handle; 14½ in. long, £1 15s

ARTICLES OF DOMESTIC USE OF A BYGONE AGE—(Continued).

2785 **Pewter Plates**, six, with Pewterer's marks: a shield of arms and name "S. DUNCUMBE," and "LONDON" on a ribband; 9½ in. dia., the six £1 10s *circa. 1720*

2786 **Pewter Shaving Box**, with cover, circular, fluted sides and cover, 1½ in. high, 3½ in. dia., 5/-

2787 **Police Rattle**, wood, single tongue and wheel, somewhat worn, 9 in. long, 7/6

2788 **Reading Desk**, for standing on table, carved wood gilt with open work scrolled sides of beautiful design (piece of scroll missing on the side towards the reader); 13½ in. high, 19½ in. wide, 13 in. deep, £2 12s 6d

2789 **Sailor's Charm**, Glass Rolling Pin, dark blue glass with flags, wreaths, &c., and inscription "A Present from Seaham," 14 in. long, 15/-

2790 **Snuffers**, white metal, with handles at the end of a long shaft, for snuffing candles, enclosed in glass; 9½ in. high, 6/-

2791 **Spice Box**, brass, oval, domed lid with repoussé radiated device; fitted with tinned liner in five compartments and nutmeg grater; on three ball feet; 3½ in. high by 6½ in. by 4½ in., 8/6

2792 **Stuart Embroidery**, Drop Bookcase, with two compartments, embroidered with silver

wire and purl in scrolled design with conventional floral ornaments of the Charles period on front, back and sides, and edged with silver thread in roped style; 6½ in. high, 3½ in. wide, 1 in. deep, £2 10s *Penna Collection*

2793 **Stocking Purse**, green silk, heavily decorated with burnished steel beads, long bugles at one end, a latticed fringe at the other, and two steel rings in centre; all in nice condition; 13½ in. long, 8/6

2794 **Tinder Box**, brass, circular, flat handle, the cover with candle socket, flint and steel inside; 2½ in. high, 4½ in. dia., 15/-

2795 **Tinder Box**, iron, circular, with flint, steel, and damper, the cover forming a candlestick; 4½ in. dia., 12/6

2795A **Old Dutch Log Bucket**, circular, body brass with landscape, figures and ornament in relief, an engraved copper rim, brass ring and lion mask handles, and three brass claw feet; 17½ in. high, 15½ in. dia.; £4 12s 6d

2795B **Old Dutch Peat Extinguisher**, copper with swing handle, spiked domed cover, and feet of brass, cylindrical body tapering upwards; 17½ in. high, 2 guineas

An old fireside necessary of Holland, highly suitable as a coal scuttle, and decidedly quaint in shape.

BOXES, CASKETS, &c.

2796 **Antique Gesso Casket**, quadrangular, with rounded lid, on six feet; 9 in. high by 10½ in. by 7½ in. 20 guineas.

The lid is filled with a curious representation of part of a procession, the back ground being leafage and two palm trees. An oriental, with turban, puffed sleeves, tunic and cracowes, or long pointed shoes, leads a caparisoned horse bearing some exalted person in long robes with bell-shaped sleeves, followed by a lady with hair erected in two high cones in a crespine. On the front side two figures in similar costume; at the back three panels of ornament; at each end a female figure. All in gesso in high relief covered with gilding, much of the ground in pointille, and with bordering and ornaments also impressed pointille. A very rare and interesting piece.

2797 **Agate Box**, kidney shaped, ormolu mount, 12/6

2798 **Agate Casket**, ormolu mounted, 1½ in. by 2½ in. by 1 in., standing on four feet, *very pretty*, 15/-

2799 **Agate Casket**, oblong, with bevelled lid, the panels of richly veined red agate set in chased ormolu mounts, on four feet; 1½ in. high by 2½ in. by 1½ in., 25/-

2800 **Amboyna Wood Box**, shaped as a wheelbarrow, the well covered with a lid; 1½ in. high, 4½ in. long, 17/6

2802 **Bead Mosaic Box**, quadrangular, brass, zinc lined; on lid a road and ruined archway in coloured beads, the sides also decorated in conventional design with coloured beads, 1½ in. by 3 in. by 1½ in., 12/6

2803 **Bolognese Casetta**, oblong, with projecting rim and deep flange to lid; the wood decorated with free style-impressed designs left open, the ground diapered with circlets; on the lid fabulous animals guarding a coat of arms, with spring lock and key, 16½ in. long, 6 in. wide, and 7½ in. high, £2 17s 6d *XVI. Cent.*

2804 **Bronze Box**, the lid set with an antique bronze representation of the festival of the Cerealia

in high relief, the bottom bearing a similar scene; ¾ in. by 4½ in. by 3 in., £2 7s 6d

2805 **Carved Ivory Box**, circular, domed cover, floral wreath round cover and sides in relief; containing four counters similarly carved and marked in the centre with one, two, three, and four of clubs; 1½ in. high, 1½ in. dia., 1 guinea

2806 **Circular Box**, lined with tortoiseshell, silver engraved rims and mounts; on the lid a moveable picture of a lady with a fan set in a silver frame, 1½ in. high, 3 in. dia., 4 guineas

2807 **Cylindrical Agate Box**, very pale stone, almost clear, mounted with silver, cut agate lid having a peculiar triangular marking at the apex, 3½ in. high, ½ in. dia., £1 10s

2808 **Cylindrical Case**, red velvet on leather, embroidered in silver on the outer case which fits over an inner one, forming cover, 4½ in. high, dia. (inside) 1½ in., 4/6

2810 **Dutch Tobacco Box**, brass, oblong, with shaped ends and domed lid; lid engraved with foliated scrolls and figures in circular panels, and in centre on an inlaid copper panel figures and landscape; 1½ in. high by 5½ in. by 2½ in., 25/-

BOXES, CASKETS, &c.—Continued.

2811 **Dutch Tobacco Box**, brass, oval, engraved, on the lid ploughing, harrowing, tending sheep, and milking cows; on under side other agricultural scenes; 1½ in. high by 7¾ in. by 3 in., £1 2s 6d

2812 **Dutch Tobacco Box**, brass, oblong, rounded ends, engraved, on lid Christ healing the Blind, and inscription; on under side an inscription within a foliated border; 1½ in. high by 6¾ in. by 2½ in., 1 guinea.

2813 **Dutch Tobacco Box**, brass, oblong, rounded ends, engraved, on lid The Crucifixion; on under side The Entombment, with inscriptions in small panels; 1½ in. high by 6¾ in. by 1½ in., 1 guinea.

2814 **Florentine Box**, octagonal, of thin wood with gesso design in colours and gold, the outlines and ground work impressed with dots, 1½ in. by 3½ in. by 5 in., £1 10s XVI. Cent.

2815 **Gold Tooled Leather Box** (old), for dessert service, red leather, elaborate pattern on both sides, brass spring lock, lined with red chamois leather; with twelve compartments for forks and spoons, 12¼ in. long, 11½ in. wide, 2¾ in. high, 1 guinea

2816 **Horn Snuff Box**, with scalloped silver rims to lid and at top and bottom of box, and silver plug inside lid, 1½ in. by 2¾ in. by 1½ in., 12/6

2817 **Inlaid Box**, square, boxwood, sliding lid with ivory and ebony inlaid border, and small diamond shaped panels inlaid with various devices; 1½ in. high by 3½ in. square, 15/-

2818 **Iron-bound Coffurette**, wood, arched lid, covered with velvet, over which are thin punched and pierced plates of iron, iron hasp, and handle on lid; 5¾ in. high, by 8 in. by 5 in., 8 guineas

2819 **Iron Coffurette**, flat lid, the edges of the lid and angles reinforced by extra plates of iron, with three bands forming hinges bearing raised quatrefoil bosses. Spring lock, with two bolts, partly covered with engraved plates of steel; original key, 4 in. high by 8½ in. by 4½ in., 4 guineas

2820 **Ivory Box**, circular, with repoussé brass device enamelled and gilt set in the lid beneath glass; subject, a woman giving a man drink from a jug, ½ in. high, 2 in. dia., 18/-

2821 **Leather Covered Box**, diced and gold tooled, by Soulby, of Ulveston, 9 in. by 15¾ in. by 6½ in. high, brass handle, lock and key, 10/6

2822 **Leather Covered Box**, wood, slightly arched lid, brass bound corners, covered in brown

morocco, and decorated all over with elaborate gold tooling in 17th century style of book cover ornament, *a la Derome*, handsome old box, well preserved, 8¾ in. high by 19¼ in. by 13 in., 10 guineas

2823 **Leather Covered Box**, wood, arched lid, bound with iron and studded with large brass bosses; the leather diced, with small rosettes between; iron handle and hasp, 7¼ in. high by 12¼ in. by 7¾ in., £1 15s

2824 **Leather Covered Box**, wood, arched lid, the edges studded with ornamental headed nails; inside lined with old water-colour printed paper; iron handle to lid; with lock and key, in nice condition; 3½ in. high by 6½ in. by 4¾ in., 22/6

2825 **Louis XVI. Cylindrical Box**, mother-of-pearl, inlaid silver-gilt, 3½ in. high, 1½ in. dia., 1 guinea

The sides divided by inlaid bands into seven compartments in which are small floral ornaments, silver-gilt and engraved.

2826 **Napoleon Box**, circular, black papier mache, with coloured print applique on lid, Napoleon standing before a number of warriors of various periods, and inscription "Songe de Bertrand; 3½ in. dia., 10/6

2827 **Needlecase**, Vernis Martin, cylindrical, with round ends, decorated with spaniel and pheasant on a green ground, on both body and lid; silver rims and horn lining; 4½ in. high, 18/-

2828 **Necessaire**, oblong red morocco case, slightly rounded lid, silver plate and catch, lined with crimson velvet; fitted with pincushion in form of a basket, silk winding tape measure, bodkin, tweezers, piercer, and thimble inscribed A PRESENT FROM LONDON, all in silver with filigree and raised designs; also scissors with silver handles and sheath, and penknife with silver handle in repoussé design. All in perfect condition. Case, 1½ in. high by 3½ by 5 in., 3 guineas

2829 **Ring Box**, oblong, slightly domed lid tortoiseshell with panels of mother o' pearl on lid, and sides, ivory rims, lined with silk plush; 2 in. high by 3 in. by 2 in., 12/6

2830 **Tobacco Box**, leather and wood, oval, a curious specimen of old Russian, from the celebrated *Bragg Collection*; 2½ in. high by 5 in. by 1½ in. 5/-

2831 **Tyrol Snuff Box**, oblong, rounded corners, bone engraved with mountaineer and chamois on the base, a chalet on the lid, and German inscription round the upper sides; 1 in. high by 2½ in. by 1½, 8/6

BRONZE.

2832 **Door Knocker**, bronze, the striker shaped as two dolphins with tails coiled upward to right and left, holding a female mask between their heads; the door plate a faun's head mask; ½ in. high, £1 5s

2833 **Italian Boar Hound Collar**, bronze, very finely pierced and engraved interlaced and floral design with shield of arms on the two opposite sides, spring catch lock, and rings for a leash; lined with pigskin; 3½ in. broad 6½ in. dia. 3 guineas XVI. Cent.

BRONZE—Continued.

2834 **Italian Bronze Medallion**, oval, Coronation of the Virgin, the crown held by The Eternal Father and Our Lord with Holy Spirit as a Dove above, surrounded by Cherubim in clouds, Very beautiful piece of work; 8½ in. by 7 in., **4 guineas**

2835 **Mortar**, the sides ornaateated with four oval medallions of lighter bronze, bearing heads of CHARLES I., 4½ in. high, 5½ in. dia., **£3 10s.** *Penna Collection*

2836 **Mortar**, early make, with band of raised scrolled ornament round the centre of side; 4½ in. high, 5½ in. dia., **£1 10s.** *Penna Collection*

2837 **St. Jerome**, Italian bronze statuette, seated on a rock with an open book, a skull at his feet, left hand upraised, as listening to angels; the rock work natural marble very similar in colour to the bronze; fine, expressive and artistic; 13 in. high, **12 guineas**

CHINA AND POTTERY.
CONTINENTAL.

2838 **Bellarmino Bottle**, old mottled stone ware, with crude head on the neck and impressed marks; 17 in. high, **£1 18s.**

2838 **Brussels Beer Mug**, raised bands in blue round rim and base, the remainder of the sides being filled with allegorical figures painted in blue on a white ground; impressed mark STEVENS, BRUSSEL; 9 in. high, very decorative, **1 guinea** *Spread Collection*

2840 **Copenhagen Plate**, vandyked rim with broad band of gilt raised ornament, in the centre a nicely painted root, stem and flower specimen of *Teucrium Scordium*; signed; 10 in. dia., **7/6**

2841 **Dresden Candlesticks**, White, a pair, 11 in. high, **3 guineas**

Six foiled base, spirally fluted, with raised oak leaves and acorns trailing downwards from the stem; shaped stem with tiny flowers in drooping bunches modelled in egg-shell china at each side; scrolled top. *Most handsome and delicate.*

2842 **Dresden Milk Jug**, Marcolini period, with cover, square handle, festooned lip, flowers, painted on sides, 5½ in. high (cracked), **7/6** *Sykes Collection*

2843 **Dresden Group**, White, *Kings Period*, 1770, 9½ in. high, oval base 6½ by 8 in., **3 guineas**

Cupid with his torch sitting on the neck of a large vase which leans against the stump of a tree, on which also rests a girl's hat encircled by raised roses; two amorini are apparently in the act of breaking the vase, pieces lying on the ground beside a rose.

2844 **Dresden Plate**, rim circular, shaped, with three sprays of flowers, another in centre, 9½ in. dia., **10/6**

2845 **Furstenburg Cup and Saucer**, decorated with letter G and wreath, both composed of delicately painted small flowers; signed, the two **22/6** *Circa 1790*

2846 **Furstenburg Leaf-shaped Dish**, white with gold veins, and two green leaves within the dish adjoining the stalk-shaped handle; mark pencilled in blue; 12 in. by 10½ in., two alike, each **8/6** *Circa 1790*

2847 **Gres de Flandres Jug**, very large size, masked lip decorated with large oval medallions, masks, coats of arms and other ornament in blue glazed relief, 20½ in. high, **2 guineas**

2848 **Gres de Flandres Mug**, Pilgrim bottle shape with hollow centre, decorated with appliqué Tudor rose and other ornaments, a man's head, mask on the neck, etc., with blue glaze in parts on grey ground; 13 in. high, **£2 17s 6d** *Spread Collection*

2849 **Gres Flamands**, fine old Stone ware Jug, globular body covered with small raised stars and a rich deep blue glaze; on the neck blue bands; pewter lid with shell-shaped lever, 9½ in. high, **2 guineas**

2850 **Hague Plates**, complete set of 12 white Dessert Plates; shaped rims with painted sprays of flowers and one larger in the centre; *each plate differently treated*; all signed with the Hague mark pencilled in blue; perfect; 9½ in. dia., the set **10 guineas** *Circa 1775*

2851 **Important Vase and Group**, Pottery, bronze coloured 22½ in. high, base 12 in. by 12 in., **5 guineas**

The base is of elegant design with strewed vine leaves, on which are two figures in fancy costume, dancing in front of a large vase. The vase is wreathed with vine leaves, a large bunch of grapes on each side, and the rim of the neck terminates with rococo scroll work. A fine and most imposing piece.

2852 **Italian Drug Jar**, *Caffaggiolo*, glazed earthenware decorated with vertical stripes of blue and yellow above, and below a horizontal band of blue outline squares with crossed lines in centre; glaze gone a little on one side; 5½ in. high, **2 guineas**

2853 **Italian Faience Bowl and Cover**, with flowers in rich dark blue and green in high relief and brown floral decoration, blue twisted handles at the sides and lid 13 in. dia., 10 in. high, **8 guineas** *Leighton Collection*

Magnificent glaze, on one side of the bowl a little imperfect. A most imposing piece.

2854 **Italian Faience Flower Basket**, circular, yellow basket pattern, arched over the top with open trellis work; 4½ in. high, **6/-** *Manning Collection*

2855 **Italian Faience Plate**, curious coloured pattern, pale yellow flowers interspersed with blue dots over the whole surface; on the rim at back **V.M.O.**, 12 in. dia., **8/6**

CHINA AND POTTERY—continued.

CONTINENTAL—Continued.

2856 **Italian Faience** Jug, old Norman shape, broad neck trifoliated rim, bright canary coloured glaze; 7in. high, 7/6

2857 **Italian Faience**, Saltcellar, square pedestal form, sides pierced in quatrefoils, decorated with deep blue on white ground; 3½in. high, 8/6

2858 **Italian Pottery. Armorial.** perforated circular dish, shaped rim, white glaze, with *Arms of the Medici Family*, one loop almost imperceptibly repaired; 8in. dia., RARE, £11s 6d

2859 **Majolica Bust** of Cleopatra, half draped, in yellow, green, and brown, after the Castelli style, 9½in. high, 2 guineas *Sykes Collection*

2860 **Majolica Dish**, Savona, modelled in compartments divided around the rim by half female figures in high relief, the smaller compartments filled with cherubs, Amorini and running animals; in the centre two Amorini sporting with a dolphin; all in pale blue on a paste covered with a bluish white glaze; 18½in. dia., 3 guineas *Early XVIII. Cent.*

2861 **Majolica Globular Vase**, old Sicilian, with short neck, 10½in. high, 3 guineas

The neck and body decorated with blue leafy scroll work, and centre circular panel with a brown border on a pale yellow ground enclosing half-length figure of a lady holding a basket of fruit, in blue on pale yellow.

2862 **Majolica Jar**, with curved waving vertical bands of alternate yellow and blue ornaments, leaving an oval centre compartment with castellated building and tree painted in brown; 9½in. high, £1 5s *Marquis Gio. Della Gran Torre Collection. Early XVIII. Cent.*

2863 **Majolica Plaque**, oblong, huntsmen and hounds back from the chase and a horse laden with a wild boar, etc. in a foreground of trees and beside a building, with buildings and hills in the distance; 7½in. high, 10½in. wide, in ebonized and gilt frame, 10½in. by 13½in. 3 guineas

2864 **Majolica Plaque**, oblong, two warriors on horseback galloping towards two others armed with spears, buildings and landscape in the distance; 7½in. high, 10½in. wide, in ebonized and gilt frame 11½in. by 14½in., 3 guineas

2865 **Majolica Plaque**, oblong, Husbandry, a man digging in the foreground, cattle and sheep, water and landscape; nicely painted but coarse in treatment; 8in. by 10½in., in ebonized and gilt frame, 10½in. by 13½in., £2 10s

2866 **Majolica Plaque**, square, Lot and his daughters drinking wine under a tree, in the distance a flaming town, 8½in. square, in ebonized and gold frame 11½in. square, £2 10s

2867 **Majolica Plate**, circular, three fold border of conventionalized peacock plumes in

yellow, brown, green, dark red and blue, extending to the well centre, wherein is a Giottoesque portrait of a lady on white ground, with a blue pyramid dotted semis; on the back, blue lines and signature P.F., 11½in. dia., in old circular ribbed frame, 17in. dia., £3 13s 6d

2868 **Majolica Plate**, circular, rim painted with cupids, flowers and architectonic scrolls, in the centre Orpheus and Eurydice, 7in. dia., in ebonized and gilt frame, 10½in. dia., £1 5s

2869 **Majolica Plate**, circular rim painted with cupids, flowers, etc., in the centre a classical female figure reclining by a basket of flowers, and another approaching; 6½in. dia., in ebonized and gilt frame, 9½in. dia., £1 5s

2870 **Majolica Plate**, circular, rim painted with cupids, flowers, etc., in the centre, Aphrodite riding on dolphins attended by Eros, and Nereides; 7in. dia., in ebonized and gilt frame, 9½in. dia., 1 guinea

2871 **Majolica Statuette**, Pesaro, Virgin and Child. The Virgin seated in a semicircular throne, holding a book on her left knee and the Infant Jesus with a nimbus and holding an orb, on her right knee; cherubs surrounding. Signed at the back A.D. 22 D. MARZ—1676.—C.D.F.—P.; 15½in. high, base 7in. by 9in., 8 guineas *XVII. Cent.*

2872 **Majolica Tazza**, fluted rim decorated in orange, large landscape occupying the whole centre, castellated buildings, ships in distance, and figures fishing in the foreground, very fine old piece; 3in. high, 10½in. dia., £2 10s *XVII. Cent.*

2873 **Majolica Wall Brackets**, a pair, shaped stands with rounded fronts, the under parts fawns' heads wreathed with vine leaves and grapes; 11½in. wide, 7½in. deep, 11½in. high, the pair 2 guineas

2874 **Mottled Stoneware Mug**, with narrow cylindrical neck, at the lower part of which is a crude semblance of a human head, caused by depression of the ware around the lines of figure; below, on the body, a small circular ornament; 9½in. high, £1 10s *XVII. Cent.*

2875 **Old Rouen Dish**, circular, fluted rim, fully decorated in red blue and green, on the rim a series of ovals with sprays between, a large spiked border interspersed with floral ornament running outwards enclosing a circular panel in centre filled with flowers and a bird perched amongst them. Cracked and repaired; if perfect worth 6 guineas; 16in. dia., 3 guineas

2876 **Stoneware Jug**, old German, globular body, short neck, with raised scrolled design of acorns and oak leaves, all over the sides, with birds under the spout; neck repaired; 7½in. high, 2 guineas *Griffith Collection*

2877 **Sevres Cup and Saucer**, gilt rims, double raised bands of blue, with gold bars and sprays of flowers; signed, and with decorator's mark; the two £1 15s

CHINA AND POTTERY—Continued.

DELFT.

2878 Coloured Delft Dish, circular, very full pattern in red, yellow, brown, green, and blue; in the centre a globular vase of conventional flowers enclosed by a crenellated blue border; on the rim a band of chevron and edging of semi-circular design with drop points; 12¼ in. dia. two alike: £1 10s each

2879 Coloured Delft Plate, circular, fully decorated in red, yellow, brown, green and blue, in centre a garden scene, Chinese style, with stag leaping a palisade; 9¼ in. dia., 10/6

2880 Coloured Delft Plate, circular, fully decorated in colours, sprays, trefoils, and annular ornament on rim, in centre large conventional flowers and palisade; 9 in. dia., 10/6

2881 Coloured Delft Plate, yellow band round rim, with conventional floral border; in centre half-length portraits of the Prince and Princess of Orange and letters FSW--PVOR (edge chipped); 14 in. dia., 15/-

2882 Delft Jug, shaped as a seated monkey, the head forming the cover, and a pink band passing round the neck forming the handle, 7½ in. high, 10/6

2883 Delft Pancake Plate, blue and white, circular, shallow, conventional sprays of flowers within circles and in centre compartment, 9 in. dia., 7/6

2884 Plate, circular, full decoration in deep blue, border covering the whole rim, in centre a vase with three balls, and large fan-shaped ornament resting on it, *signed*, 13½ in. dia., 16/6

2885 Plate, circular, full decoration in deep blue, border covering the whole rim, in centre a vase with three balls, and a large fan-shaped ornament resting on it, 12½ in. dia., *signed*, 13/6

2886 Plate, circular, full decoration in deep blue, border covering the whole rim, in centre a vase with fan-shaped ornament, 9 in. dia., *signed*, 7/6

2887 Plate, circular, deep blue, rim Chinese pattern, centre curved octagonal panel with conventional roses, 14½ in. dia., 18/-

2888 Square Bottle, with birds and scrolls in blue, 10½ in. high, 4 in. dia., fine old piece, 3 guineas *Leighton Collection*

2889 Vase, compressed globular body ribbed as a melon, set on an outspreading base, with neck tapering outwards and supporting a ball-shaped top, the whole decorated with flowers and birds in blue; brass collar round rim, 12¾ in. high, £1 7s 6d

Many other examples of Delft for sale; decorative plates, &c.

ENGLISH.

MARTIN WARE.

From the Collection of the late ALFRED BRYAN, Theatrical and Political Cartoonist.

"Martin Ware" represents the Renaissance of Art in Stoneware, the Grés Ceramique of France and the Grés de Flandres of Northern Europe, made more beautiful and endowed with the highest artistic feeling by the Art Potters, the Brothers Martin. Every piece is signed and dated, and no two pieces are ever made alike, except to express order.

2890 Clock Stand, with clock (not in going order), a terraced base with two winged lions seated at the outer sides supporting a circular frame enclosing the clock, all worked in relief in fine design, coloured in chrome and shaded blue and covered with a vitreous glaze, in moulded ebonized stand 13 in. high, 12 in. wide, 7 in. deep, *signed* "Martin, London, 1878," £1 10s

2891 Jug, ovate body, blue, with scratched satyr mask under the lip, touched in with white; *signed* "Martin Bros." 3 in. high, 5/-

2892 Pilgrim Bottle, circular centre with large open space in the middle, two loop handles on shoulders, on one side the decoration in blue between scratched outlines, terminal winged figures blowing horns on either side of a bull's head, on the other graceful arabesques, on neck and base scrolled leafage; *signed* "R. W. Martin, 3, 86," 13½ in. high, £1 5s

2893 Tobacco Jar, spheroidal, cream ground, flowers and birds in blue on the sides, cover with geometric device; *signed* "R. W. Martin, 15, 9, 82," 6 in. high, 15/-

2894 Vase, drop-shaped, two handles, a cool grey with raised design introducing conventional flowers in blue; *signed* "R. W. Martin, 1, 9, 82," 10½ in. high, £1 5s

2895 Vase, drop-shaped, two handles, another with decoration of the same character as the foregoing, but varying in detail; *signed* "R. W. Martin" (fault in firing) 10½ in. high, 1 guinea

2896 Vase, ovate body, short wide neck, design of liliu flowers and leaves in pale yellow and sage green; *signed* "R. W. Martin & Bros., 1883," 8 in. high, 1 guinea

2897 Vase, amphora shaped body on circular base, rim set close on shoulders, upper half a pale tinted granulated ground, lower half pointed trefoils in sage green with helianthus between in blue; *signed* "R. W. Martin, 4, 82," 6¾ in. high, 12/6

2898 Vase, cylindrical with slightly curved sides, broad neck, geometric design on the neck in blue, birds, flowers, and grasses on the body; *signed* "R. H. Martin, 13, 1, 82," 10 in. high, 15/-

CHINA AND POTTERY—Continued.

MARTIN WARE—Continued.

2899 **Vase**, beaker shape, scrolled, foliated ornament in shaded blue on a cool grey ground pricked in with dots; signed "R. H. Martin, 28, 11, 79," 8½in. high, 12/6

2900 **Vase**, cylindrical, scratched design of climbing plants filled in with brown on a pale buff ground; signed "Martin Bros., 12, 84," 8in. high, 12/6

2901 **Vase**, drop-shape, on circular base, aquatic plants in brown; signed "Martin Bros.," 5½in. high, 7/6

2902 **Vase** drop-shape, black body with foliated scroll design (piece out of neck); signed "Martin Bros.," 4½in. high, 5/-

2903 **Vase**, oviform body, long neck, curious antique-looking blue colour; signed "Martin," 5½in. high, 3/-

2904 **Vase**, wide necked, smoky-coloured body with white floral ornament; signed "Martin, 188"; 3in. high, 5/-

2905 **Vase**, pinched in sides, Japanese taste, two upright handles, decorated with dabs of colour; signed "Martin"; 2½in. high, 5/-

2906 **Vase**, square form, sloping shoulders, two handles, yellowish glaze; signed "Martin Bros.," 2½in. high, 4/-

2907 **Vase**, globular, straggling design of leaf and blossom; signed "Martin Bros., 187"; 1½in. high, 3/-

2908 **Vase**, globular, design of carp, eels, and other fish swimming, signed "Martin"; 1½in. high, 3/-

ENGLISH—(VARIOUS).

2909 **Black Glazed Cat**, seated on a cushion shaped base, relieved by lines of gold; 7½in. high, 5/-

2910 **Bow Figure**, a lady in Eastern costume, with high pointed hood over head and shoulders, seated beside rock work, and shells, holding a large spirally ribbed bowl; very slightly repaired), 5½in. high, £4 4s. A RARE MODEL.

2911 **Christ Blessing Children**, white biscuit china medallion, circular, 5½in. dia., 2/6 *Sykes Collection.*

2912 **Coalport Plate, Swansea Pattern**, with shaped rim and gold edge; three scroll border panels on rim and scrolled shield in centre in gold and colours, filled with painted flowers; the ground in sunk diamond-shaped spaces arranged diagonally, each filled with four blue dots; EXTREMELY HANDSOME, 10in. diameter, £112s 6d *Lord Sudely's Collection.*

2913 **Crown Derby Centre Dish**, pointed oval shape, with scalloped rim, decorated with festooned border looped up to each of the points, and roses in centre; 1780 mark in blue; 12in. long, 9½in. broad, 3½in. high, 4 guineas

2914 **Crown Derby Cup and Saucer**, raised band of lattice work round cup and saucer in green, with beautifully painted flowers in colours; 1780 mark in red, £1 10s

2915 **Crown Derby Plate**, circular, decorated centre and three sides clusters of flowers, 1780-98 mark, 8½in. dia., 8/6

2916 **Davenport Leaf-shaped Dish**, pale green, blue edging to rim and pink veins; 7in. by 5½in., 5/- *Manning Collection*

2917 **Doulton Vase**, globular, broad neck, band of relief ornament round shoulders and another round body; 3½in. high, 2/6

2918 **Harvest Mug**, old Staffordshire, ship on one side and verse within wreath on the other, 4in. high, 6/-

2919 **Jar and Cover**, globular, light unglazed ware covered with trickling dots of chocolate glaze forming pretty effect; 4½in. high, 2/6

2920 **Leeds Dish**, circular, upright shaped and moulded rim, pierced and raised designs, 1½in. high, 8½in. dia., 10/6

2921 **Leeds Flask**, globular, with flattened sides, decorated in colours, houses, trees, etc., 6½in. high, 7/6

2922 **Liverpool Plate**, circular, transfer sprays of flowers on rim and in centre figures of "Poor Jack" parting from his girl, ship in the distance, all in brown colour; impressed Liver mark; 10in. dia., 10/-

2923 **Liverpool Plate**, circular, black band round rim, and black transfer ship in full sail in centre; 10in. dia., 10/-

2924 **Lustre Goblet**, rich deep colour, with raised baskets of flowers in colours on a broad band of pale blue; 4½in. high, 5/-

2925 **Lustre Jug**, deep colour, band of raised dotted ornament round neck; 4in. high, 5/-

2926 **Lustre Jug**, pretty shape, pale blue band round body; 2½in. high, 4/-

2927 **Minton Plate**, circular, Rose du Barri rim, gold edging, hand painted flowers in centre, very decorative, 9in. dia., 3/-

2928 **Old Bow Figure**, A Shepherdess with flowers on pierced scroll base, *Anchor and Dagger mark*, RARE, 10½in. high (slightly repaired), 5 guineas

2929 **Old Chelsea Shaped Dish**, four leaves in green and pink, the stems forming pierced handles, part of one stem gone, 8in. dia., £1 15s

2930 **Old English Pottery**, plate, circular, shaped rim, design in red and brown, chimera and flowers alternately and in centre flowers; signed *Masons Ironstone China*; 10½in. dia., 7/6

2931 **Old English Pottery**, plate, circular, shaped rim decorated with flowers on a blue ground and darker blue and gold border, centre flowers in Chinese style in colours and gold; fine specimen, impressed mark, *Ironstone China*; 8½in. dia., 10/6

CHINA AND POTTERY—(Continued).

ENGLISH—Continued.

2932 **Old English Pottery**, plate, circular, shaped rim. decoration in brilliant colours and gold with rich blue, Chinese style; impressed mark, *Patent Ironstone China*; 7 $\frac{1}{2}$ in. dia., 7/6

2933 **Old Staffordshire**, finely modelled figure of an old man on crutches, entitled "OLD AGES," square base; 8 $\frac{1}{2}$ in. high, 25/-

2934 **Old Staffordshire Jug**, decorated with bright colours in old Chinese style, shaped handle with Janus headed figure; 6 $\frac{1}{2}$ in. high, 7/6

2935 **Old Staffordshire Jug**, blue rim and band round neck and base, on each side a shield of arms and emblems of the "Independent Order of Odd Fellows," with motto "Amor, Honor, Justitia," in dull red, pale blue and yellow (handle replaced); 5in. high, 15/-

2936 **Old Staffordshire Jug**, shaped rim, coloured transfer design on neck and shield of arms on sides supported by emblematic figures, with motto "Peace and Plenty the reward of Temperance," floral ornament inside neck; 7in. high, 15/-

2937 **Old Staffordshire Jug**, ewer shaped, covered with pale blue, leaving the design in white, foliated ornament inside and outside neck, and figures of music, art, and literature before a seated Minerva; 7 $\frac{1}{2}$ in. high, 10/6

2938 **Plate**, shaped rim, gold on blue border, enclosing a twisted ribbon border; in centre Vitruvian scroll ornament with vase of flowers and birds in colours; 9 $\frac{1}{2}$ in. dia., 1 guinea

2939 **Salt Glaze**, teapot and cover, raised shell, design upwards, the handle shaped as a dolphin, the oval spout with a raised spray of flowers, oval base, 6in. high, 4 guineas *Jas. Saunders Collection*

2940 **Salt Glaze**, two handled dish, the sides with raised semicircular looping and tile design, the handles, stalks with raised vine leaves trailing into the dish, 12 $\frac{1}{2}$ in. by 10in. 18/6 *Jas. Saunders Collection*

2941 **Salt Glaze**, plate, shaped rim with eight scrolled compartments each with diamond shaped piercing, the whole plate covered with elaborate raised design, 10in. dia., 15/- *Jas. Saunders Collection*

2942 **Salt Glaze**, dish, oval, quatrefoil shape with band of raised cruciform ornament on the rim, 8 $\frac{1}{2}$ in. by 9 $\frac{1}{2}$ in., 8/6 *Jas. Saunders Collection*

2943 **Staffordshire Figure**, old; man with corsair's cap, in a blue tunic, holding a lyre, standing beside a pillar, 7 $\frac{1}{2}$ in. high 4/6

2944 **Staffordshire Figure**, old; man with corsair's cap, blue sashed tunic, green striped tights and orange cloak, standing with one foot raised on rocks; 7 $\frac{1}{2}$ in. high, 5/6

2945 **Staffordshire Group**, a sportsman and dog standing beside a gnarled tree trunk, the man wearing blue tunic, orange cloak, short skirt and hessian boots, 14in. high, 7/6

2946 **Staffordshire Masked Jug**, shaped as a piece of tree trunk, the knots coloured pink, red, and green, with semis of leaves in red between, under the lip a faun's head wreathed, in colours, band of pink lustre round rim (slightly cracked and chipped), 5 $\frac{1}{2}$ in. high, £1 5s

2947 **Sunderland Jug**, blue lines round rim and base, on the neck a raised floral pattern in colours, on the side, birds and conventional flowers in colours; 4 $\frac{1}{2}$ in. high, 7/6

2948 **Sunderland Jug**, pink lustre bands round rim, neck and base, transfer may-blossom border on neck, on one side a view and verse, "Sailor's Farewell," on the other view of the Iron Bridge over the Wear, and in centre a verse "England, England, glorious name; Home of Freedom, star of fame," etc., all in colours (slightly cracked), 9in. high, 15/-

2949 **Sunderland Jug**, pink lustre, band and marble round neck, on one side view of the Bridge over the Wear, on the other a verse "Friendship, Love, and Truth," within floral border, in centre another verse "Swiftly see each moment flies." all printed in black (spout slightly injured) 9 $\frac{1}{2}$ in. high, 13/-

2950 **Wedgwood Etruscan Vase**, Crater shape, basaltes ware, decorated with figures in red and white, a fine specimen of the Josiah Wedgwood period, 11 $\frac{1}{2}$ in. high, 3 guineas

2951 **Wedgwood Jug**, drab coloured, smooth neck, granulated body with raised figures of children playing, plated copper lip, 6 $\frac{1}{2}$ in. high, 6/-

2952 **Wedgwood Plate**, circular, shaped rim, groups of exotic birds on rim, and in centre in black transfer, 9 $\frac{1}{2}$ in. dia., 7/6

2953 **Worcester Mug**, with painted figure of "A Don Cossack" on horseback, in colours, 4 $\frac{1}{2}$ in. high, £1 5s

2954 **Worcester Plate**, fluted rim with scalloped edge, blue border, in centre a basket of flowers in blue, 9in. dia., 7/6

2955 **Worcester Plate**, shaped rim with gilt gadroon edge, the rim pale buff, with lavish decoration in gold, red, and black; small gold ornament in centre, 10 $\frac{1}{2}$ in. dia., 8/6

2956 **Worcester Tea Pot**, with flower handle to cover, blue floral decoration, crescent mark, (cracked,) 6in. high, 10/6

JAPANESE.

2957 **Bizen Ware Vase** in form of a caparisoned elephant with four feet close together and back arched up, with centre projection forming the neck; on the sides an incised inscription; 4 $\frac{1}{2}$ in. high, 10/6

2958 **Bowl**, on the outside rocks and mountains rising out of the mist; inside a medley of diaper work, large striped leaves and butterflies, all in intense blue, 4 $\frac{1}{2}$ in. high, 10in. dia., 27/6 *Boyce Collection*

CHINA AND POTTERY—(Continued).

JAPANESE—Continued.

2959 **Brown Pottery Teapot**, sides and lid pierced halfway through, spray of plum blossom over spout, plaited cane handle 6½ in. high, 3/6

2960 **Idzumo Vase**, quadrangular, brown ware with green and yellowish-buff streaks down each side of the neck; on one side the raised sign for Long Life, on the other the sign for Happiness; 8½ in. high, £1 5s

2961 **Kinkozan Jar and Cover**, fine Awata ware covered with cloisonné enamel except in a shaped compartment on each side which is filled in with floral decoration in gold and enamel colours, signed "made by Kinkozan" in Japanese; 5 in. high, 1 guinea

2962 **Large Circular Plaque**, with cluster of peonies and plum blossom, birds and cages, etc., mainly in deep blue tinted slightly with claret, a bold piece of wall decoration, 19½ in. dia., 2 guineas *Dr. Medwin's Collection*

2963 **Olive Green Vase**, double gourd shape with two handles, 10½ in. high, on carved and pierced wood stand with five curved legs, total height 13½ in., 2 guineas *Ernest Hart Collection*

Very graceful in form and colour, with a band of raised ornament contracting the centre of the vase; impressed seal mark Kea-King period, 1796-1822.

2964 **Old Japanese Tea Jar** (*cha-ire*) one of the utensils for the *Cha-no-yu*, or Tea Ceremony, brown stoneware covered with a brown glaze; unusual example with two small handles and spout; ivory cover; 3½ in. high, 8/6

2965 **Old Japanese Tea Jars**, with *itoguri* marks on the base; ivory covers, several specimens 7/6 each

2966 **Old Japanese Tea Jars**, several other specimens with ivory covers, 6/- each

2967 **Old Satsuma Figure**, a Sennin seated beside a bowl, holding a whip, the thong of which passes round his neck, on rocks with waves washing against the base, the robes beautifully decorated with textile patterns in enamel colours and gold; 11½ in. high, £2 12s 6d *circa 1820*

2968 **Raku Dish**, quadrangular, on feet, with border of key pattern; in the centre a branch of peach blossom, all in brown colour beneath the glaze; 11½ in. by 19½ in., 18/6 *Ernest Hart Collection*

2969 **Raku Ware**, gourd-shaped bottle, 9½ in. high, £1 12s 6d *Ernest Hart Collection*

Light brown stoneware, decorated in the eccentric style, with a thick white glaze resembling an icy incrustation. Highly decorative.

2970 **Satsuma Bowl**, 2½ in. high, 5½ in. dia., 18/6

Outside, a pretty border of *Nishikide* decoration; inside a landscape, and three children playing with a toy *Shishi*, in gold and enamel colours

2971 **Satsuma Vases**, a pair, globular, short necks, light grey faience covered with an ivory glaze, delicately crackled, floral and brocade ornament on shoulders and on sides, birds and children in alternate panels, 6 in. high, the pair 1 guinea

2972 **Satsuma Vase**, two handles, bulbous body, hexagonal neck decorated in enamel colours, fir and plum blossom, emblematic of enduring friendship (handle repaired), 11½ in. high, 25/-

2973 **Splashed Vase**, 10½ in. high, 3 guineas

Unusual pattern. The body of the jar splashed with a minute dotting of red, without glaze; the ornament consisting of figures and landscape in *famille verte* glazed; the inside glazed and crackled.

2974 **Stoneware Dish**, circular, decorated in colours, with raised and depressed figures of three fish swimming amidst water plants. Very artistic; 12½ in. dia., 12/6

OLD NANKIN.

2975 **Bowl**, outside decoration, native scene of figures bidding adieu to a mandarin in a *riksha*; inside, border round rim, and boy flying kite at bottom; on base, *Yung Ching* mark, 1723; 3½ in. high, 7½ in. dia., 18/6

2976 **Bowl**, with out-curved rim; outside decoration, fir and fruit trees, etc.; inside, border round rim, and circular panel at bottom with a crane, etc.; on base, *Kang-he* mark, 1667; 3½ in. high, 7½ in. dia. £1 2s 6d

2977 **Cup and Saucer**, old Chinese, with rich colouring of deep blue and gold, leaving white compartments filled with figures in house and garden, 21/- *Griffith Collection*

2978 **Ginger Jar**, blue and white with figures in a procession and Plantain Trees, 8½ in. high, handsome pierced and carved ebonized stand and fine pierced cover, 6 guineas

2979 **Ginger Jar**, Hawthorn Pattern in very rich blue, with three compartments containing other decoration; carved and pierced wood cover; 9½ in. high, 5 guineas

2980 **Ginger Jar**, on the sides a mandarin beneath a spreading tree, and a boy bringing a containing a roll; carved and pierced wood cover, 10 in. high, £4 17s 6d

2981 **Ginger Jar**, floral decoration, honey-suckle, etc., and birds, china cover with domed top; similar decoration, A HANDSOME JAR, 9½ in. high, £4 10s

2982 **Ginger Jar**, Hawthorn pattern, with three shaped compartments, left white, and containing various emblems known as "Precious things"; carved and pierced cover, 9 in. high, 5 guineas

2983 **Long Eliza Bowl**, octagonal, blue and white decorated in compartments, some having the figure known as Long Eliza; very early example and FINE COLOUR, 3½ in. high, 7½ in. dia., 2 guineas

2984 **Long Sleeve Bottle**, decorated with landscape, rocks, men fishing, etc., in the richest blue, with wooden stand fastened to the bottle, 14 in. high, 3 guineas

CHINA AND POTTERY—Continued.

OLD NANKIN—Continued.

2985 Old Chinese Milkjug, ornamental border round neck *en grisaille*, two figures in front outlined in red shaded in black; 4½ in. high, 6/6

2986 Old Chinese Milkjug and cover, ornamental border round shoulders and cover, and figure of Juno on each side painted in black touched with gold; 5½ in. high, 7/6

2987 TALL VASE, cylindrical, rounded shoulders, tapering downwards, 17½ in. high, 19 guineas

Ming period

This beautiful vase is of the first quality in the whiteness of the china, and the brilliancy of the blue decoration. The sides are covered with a rocky landscape and water, with figures passing across a causeway towards a Buddhist shrine. On the neck are two sprays of conventional roses.

2988 VASE, drop-shaped, with plantain leaf border on neck, and floral design round body in deep blue, 10 in. high; on circular carved and pierced ebonized stand, total height 11½ in., 3 guineas

2989 BEAKER, cylindrical, 17½ in. high, 20 guineas

Ming period

First quality china, startlingly white, very rich blue decoration; on the body a landscape, a bullock in a stream, and man on rocks; on the neck a similar scene.

2990 BEAKER, cylindrical, 18½ in. high, 12 guineas

Ming period

Very fine quality, the body decorated with landscape and figures, and the neck with a similar scene, a man fishing, and other figures.

2991 BOWL AND COVER, 8 in. high, 8½ in. dia. £5 10s *Gaiffith Collection*

The sides and cover spirally fluted, forming eight compartments, filled alternately with fish scale, floral, key pattern, diced, and floral designs, with lotus flower handle to cover; all in very fine blue on a good white.

ORIENTAL ENAMELLED COLOURS.

2992 Beakers and Vases, complete set of five, two Beakers and three Vases with covers, rare old chocolate colour with enamelled decoration; beakers 9½ in. high, vases 11½ in. high, the set 15 guineas

Brilliantly white porcelain, the outside covered with a rich chocolate colour, except a narrow band round the upper and lower parts, and a long leaf-shaped panel with serrated edges at both back and front. The bands are divided into sections of alternate floral and diaper designs in enamel colours, while the leaf-shaped panels are filled with peonies, plum blossom, etc., all in brilliant enamels. Between these panels are gay butterflies, which are repeated on the covers. The low price asked is because they have been repaired, but so skilfully that it is scarcely perceptible.

2993 Ginger Jar, with four circular compartments containing the symbol for "Long Life," the spaces between filled with peonies and other flowers in varied coloured enamels; pierced and covered with wooden cover (slight crack), 10 in. high, £4 4s 6d

2994 Large Circular Dish, with border of trefoil-shaped ornament in blue, white, and pink,

the centre filled with lotus flowers, pods, and leaves tied with ribbon in various colours; outside, sprays of bamboo in red; very fine for wall decoration; 13½ in. dia. 25/-

2995 Large Dish, circular, decorated in six compartments radiating from a central circular panel, filled alternately with interior house scenes and figures, and flowers and birds, all in enamel colours and gold; 19 in. dia., 3 guineas

2996 Plate, circular, the rim decorated with three detached sprays of flowers; in the centre a tall bamboo, rock work and flowering peonies enclosed by a circular spiked border; 9½ in. dia. 8/6

2997 Plate, circular, narrow green border on rim, bouquet of peonies at one side of the centre, and two small sprays, all in enamel colours, 9 in. dia., 21/-

2998 Plate, circular, decorated with floral border, sprays of peonies, etc., in enamel colours, prevailing tone rose pink; 10 in. dia., 16/-

POLYCHROMATIC WARES.

2999 Beaker, cylindrical, 17½ in. high, 13 guineas

On the body a noble in court cap and red robes, on horseback, attended by men carrying a huge umbrella, in blue, green, red, and yellow, and blue flags. On the neck two nobles on horses with attendants. A very fine piece of old coloured china.

3000 Beaker, cylindrical, 16½ in. high, 11 guineas

On the body in front scene of a house with the introduction of guests, five figures most beautifully painted; at back flowering tree; on the neck two of the figures represented below, seated, taking tea from an attendant. At the junction of neck and body a zigzag border in pink and yellow, and above it another border in green, yellow, and white, in slight relief. A choice specimen.

3001 Bowl, bands of blue and gold round rim and base outside, with peonies and cocks between; inside, flowers at intervals round sides, red border round the bottom, and flowers in the centre, 2½ in. high, 5½ dia., beautiful piece, 25/-

3002 Ginger Jar, decorated with rocks and long floral sprays in red, gold, blue, green, pink, etc., peonies in lake enamel colour, coral bordering round rim; carved and pierced wood cover, 10 in. high, £3 10s.

3003 Ginger Jar, with palisade and flowers in varied colours, and peonies in lake enamel; carved and pierced wood cover (slight crack at back), 10 in. high, £3 5s.

CHINA AND POTTERY--Continued.

WHOLE COLOUR WARES.

3004 Cream Ware, Cup and Saucer, both shaped as an oval quatrefoil, with sprays of flowers in high relief round the sides, £1 15s *Griffith Collection*

3005 Old Chinese Figure, Ming Dynasty, a mandarin leaning upon the shoulders of a boy, faces unglazed, the robes covered with thick, treacly, coloured glazes; 9½ in. high, £1 10s *XVI. Cent.*

3006 Old Chinese Vase, "Bird's Nest" China, ovate body slightly curved neck, apple-green, covered with a peculiar trickling splash in a dark tone. Slight chip on the rim, but old and rare; 6½ in. high, 18/6

3007 Old Grey Crackle Vase, ovate body, broad neck, with very rich crimson and purple splashes running down four sides, raised bats for handles; a fine specimen 12 in. high, 6 guineas

3008 Sang de Bœuf Vase, bulbous shape, broad neck and out-curved rim, even colour, splashed on the upper side of the rim with faint grey blue, 15 in. high, 3 guineas

3009 Sang de Bœuf Vase, drop shaped with out-curved rim crackled white on the upper side, very decorative piece, 16½ in. high £2 7s 6d

3010 Splashed Vase, Sang de Bœuf and Blue, bulbous shape, with long neck and slightly outcurved rim, on finely carved and pierced wood stand with five feet; vase 14 in. high, total height 16 in., 3 guineas

3011 Splashed Vase, narrow neck with out-curved rim, widely expanded rounded shoulders and tapering body covered with a peculiar brown tint, splashed with a soft grey, warmed with a tone of sang de bœuf at the broadest part, 11½ in. high, on wood stand with three feet, total height 13½ in. 30/-

3012 Tea Green Vase, (23½ in. high, 6 guineas *Ernest Hart Collection*

Wan-leih period, 1573-1619

Unusually large in size and very fine in colour. The softness of the tea-green colour is contrasted around the neck (on which are two climbing lizards in relief) by a rich warm brown glaze very effective.

VARIOUS.

3013 Anatolian Ware Sprinkler, richly decorated in dark blue, 7 in. high, much repaired, 17/6 *Leighton Collection*

3014 Ancient Persian Vase (repaired), with shaped panels of flowers in buff and green on a blue scroll ground. 13 in. high, 34 in. around, GRAND OLD PIECE £6 10s *Leighton Collection*

3015 Rhodian Pottery, circular plate, border on rim, conventional floral ornament in centre in varied colours, 9½ in. dia., 2 guineas

3016 Rhodian Pottery, Mug, with spherical body and funnel-shaped neck, decorated with floral ornament in varied colours, 9½ in. high, 4 guineas

3017 Rhodian Pottery, Mug, with spherical body and funnel-shaped neck, decorated with floral ornament in varied colours, 9½ in. high, £3 12s 6d

3018 Rhodian Pottery, Saucer, 5 in. dia., with flowers of varied colours, slightly repaired, 1 Guinea *Leighton Collection*

3019 Rhodian Pottery, Saucer, similar, extensively repaired, 10/6 *Leighton Collection*

3020 Spill Jar, cylindrical, fluted, out-curved base sides painted in coral leaves and flowers with gold scrolls, pierced between the varied parts of the design, 5 in. high, 12/6

COSTUME.

3021 Black Forest Peasant Hat, for girl, white straw, trimmed with black straw and red wool puffs set in form of a cross, 5s

3022 Black Forest Peasant Cap, top, silver and overlaid gold, and black watered silk bow; back, gold thread and laid work; with edging of black lace 6/-

3023 Black Forest Peasant Cap, top, straw coloured ground with interwoven gold, pale

magenta silk ribbons and bow; back, similar with oval panel of floral work woven in colours 6s

3024 Black Forest Peasant Cap, black watered silk edged with flapping silk net; back, woven floral work in bright colours, 6s

3025 Black Forest Peasant Cap, black watered silk with long broad ribbons of the same material as streamers at the back and sides; in nice condition, 8/6

DEVOTIONAL OBJECTS.

3026 Adoration of the Shepherds, gilt bronze plaque, quadrangular, with figures in relief, inscribed PARM. INVENT., and date 1561; 7½ in. by 5½ in., 8 guineas

The scene is laid in front of a large triumphal arch of Roman character, through which may be seen a circular tower; in the foreground the Holy Infant in a sort of basket with the Blessed Virgin adoring, and grouped around, the Shepherds in Phrygian caps, one bearing a lamb, and St. Joseph holding an ass

3027 Christ at the Scourging Pillar, old Italian bone carving in three sections, probably from the sides of a Florentine casket, set in an ivory and wood frame, with ivory and wood inlaid border, 7½ in. by 6½ in., 5 guineas

3028 Christ Falling beneath the Cross, old silk tapestry picture in colours, oblong,

DEVOTIONAL OBJECTS—Continued.

6½in. by 8½in., in old carved wood gilt frame, with scrolled projections; 12in. by 13in., 4 guineas

3029 **Crucifix**, ivory Christ, 4in. high; ivory scroll above, and skull and cross-bones beneath, on ebony cross with square pedestal and graduated base; 10in. high, £2 10s

3030 **Italian Peasant Devotional Pendant**, for a child, pretty, neatly worked silvered chain with four large ball links, attached to square gilt pendant with filigree border containing coloured and gilt Infant Jesus, £2 10s

3031 **Italian Steel and Enamel Pendant**, St. Francis of Assisium receiving the sacred Stigmata, in prettily worked old steel frame, 1½in. by 1½in. high, £1 7s 6d

3032 **Processional Crucifix**, copper gilt, quatrefoil shaped ends bearing on the front side engraved half-length figures of the Almighty Father and St. Anthony at the summit and base, and Our Lady and St. John at left and right with large figure of our Lord 5½in. high; on

the reverse side an engraved figure of the Crucified and half-length figures of the four Evangelists. The lower part of the cross has been broken and rivetted together, the plate holding it covering the finish of the following inscription in contracted Latin: "Dominus Benedictus Plebanus Deripoli Rector Jusus Ecl." Very interesting specimen of Italian late 15 cent., or early 16 cent. art; 23in. high, 10 guineas

3033 **St. James**, gilt bronze bust with scallop shells on robe, fine old Italian figure, probably from some altar piece, 6½in. high, 5 guineas

XVI. Cent.

3034 **Virgin and Child**, old Russo-Greek painting on a wood panel, taken from the altar of a church near Sebastopol at the time of the Crimean War, 16in. by 13in.; in oak frame glazed, 20in. by 17in., 3 guineas *From the collection of the late James Fowler, Esq., F.S.A., Wakefield.*

ETHNOGRAPHICAL OBJECTS.

3035 **AUSTRALIA**, Emu Egg, very beautifully carved on one side, figures of Maoris and fine landscape, 1 guinea

3036 **AUSTRALIA**, Emu Egg, carved on one side with Coat-of-Arms of Australia surrounded by floral work, 12/6

3037 **AUSTRIAN TYROL**, Peasant's Belt, broad leather, studded with small silver nails in an artistic device, enclosing Austrian Eagle and inscription: "*Gelobt sei Jesus Christus in Ewigkeit. Amen. Johannes Lever, P.F., 1753*"; fastening with straps and brass buckles; 4½in. wide, 38in. long, 1 guinea

3038 **CHINA**, Musical Instrument, shaped somewhat like a mandoline, for four strings (one key missing), the head shaped and carved as a bat flying (back cracked); 36in. long, 10/6

3039 **Fossils**, a box containing 34 varieties of British specimens, nearly all named, 5/-

3040 **LINE ISLANDS**, Scourge, a long forked stick set with rows of shark's teeth on each side, used for malefactors (one branch of the fork repaired); 56in. long, 10/6

3041 **NEW GUINEA**, War Club, circular stone head, drilled, fixed on a staff, the end bound with knotted fibre; 29in. long, 12 6

3042 **NEW GUINEA**, War Drum, carved wood, hollow tube narrowing towards centre, covered at one end with lizard skin; one plain and one carved handle; 26½in. high, 12/6

3043 **NEW SOUTH WALES**, Nulla Nulla, a hard wood club with pointed knob 21½in. long, 6/-

3044 **NEW SOUTH WALES**, Woomera, a long oval throwing stick for propelling light lances; with lance; Woomera 24in. long, 8/6

3045 **Saw Fish Snout**, a good specimen, 28½in. long, 2/6

3046 **Saw Fish Snout**, another, end chipped, 26in. long, 2/-

3047 **SUSSEX**, 61 Birds' Eggs, representing the different varieties of birds native to the County of Sussex, all mounted on cards, named, and enclosed in two partitioned card-board boxes; the set 2 guineas

3048 **THIBET**, Lamaistic Prayer Box, and reliquary, square, with half oval projecting panels on each side filled with turquoises and amber, the box ornamented with dotted wire scrolls and ornaments composed of turquoises and amber; 2½in. square, 18/6

FLINT IMPLEMENTS.

Found by G. H. ALLEN, Esq. in the Cray Valley, Kent, except where marked otherwise.

Most are marked with name of place and date of find.

3049 **Adze**, triangular form, the broad end forming a chisel shaped cutting edge, one face flat, the butt naturally formed, with the original crust; apparently for hand use; 4½in. long, 7/6

3050 **Adze**, triangular shape, triangular section with high ridge, truncated butt; 4in. long, BOSTON ROAD, HANWELL, 6/-

3051 **Adze**, long narrow form, one face flat, rounded cutting edge, bleached flint; 5½in. long. HAYES, 1890, 6/-

3052 **Axe or Hammer**, naturally perforated, forming a sharp beak, boldly chipped with part of original crust; 3½in. long. OLD HILL, 1888, 6/-

3053 **Arrow Head**, pointed ridged flake with very straight facets, butt rounded and wedge shaped; 1½in. long, 2/6

FLINT IMPLEMENTS—Continued.

- 3054 **Arrow Head**, leaf shaped, convex on both faces, with a definite tang; $1\frac{1}{2}$ in. long, 2/-
- 3055 **Arrow Head**, ridged flake, triangular section, with single barb on the right side; $1\frac{1}{2}$ in. long, 1/6
- 3056 **Celt or Adze**, rounded cutting edge, obtuse pointed butt, dark flint, the exterior whitened almost into chalk; $4\frac{1}{2}$ in. long, 5/-
- 3057 **Celt or Chisel** ? long narrow form, almost square section, boldly chipped and partly polished, bleached flint; $4\frac{1}{2}$ in. long. TOWER FIELD, 6/-
- 3058 **Core**, large ochreous coloured block of flint, from which long flakes have been struck 3/-
- 3059 **Curious Cutting Implement**, a splinter of flint with a flat under face and triangular section, has been so ground at one end as to make a sharp edge very similar to that of a graver; or viewing it lengthwise flat face upward the implement appears as a miniature ship of war with powerful ram; 3 in. long. SNAG LANE, 10/6
- 3060 **Grubbing Tool**, large boldly chipped flint with crudely worked rounded edge, butt end shaped conveniently for the hand, showing original crust; 8 in. long. EYNESFORD, 1888, 7/6
- 3061 **Grubbing Tool**, another, with rounded chisel shaped edge; $6\frac{1}{2}$ in. long. HAYES, 1890, 7/6
- 3062 **Grubbing Tool**, another, parallel sides, rounded cutting edge, truncated butt; $5\frac{1}{2}$ in. long. CUDHAM VALLEY, 1889, 6/-
- 3063 **Grubbing Tool**, the butt end conveniently shaped for the hand, expanding body very convex, rounded deeply bevelled cutting edge; $4\frac{1}{2}$ in. long. EYNESFORD, 1888, 5/-
- 3064 **Lance Head**, long, shapely ridged flake, bleached flint; $2\frac{1}{2}$ in. long, 4/-
- 3065 **Lance Head**, symmetrical leaf shaped flake, with centre ridge truncated butt; $2\frac{1}{2}$ in. long. TOWER FIELD, 1890, 4/-
- 3066 **Lance Head**, elliptical ridged flake, truncated butt forming the nucleus of a tang; $1\frac{1}{2}$ in. long. TOWER FIELD, 4/-
- 3067 **Lance Head**, curved ridged flake, bleached flint; $2\frac{1}{2}$ in. long, 2/6
- 3068 **Lance Head**, curved ridged flake, broad truncated butt; 2 in. long, 2/6
- 3069 **Lance Head**, broad irregular shaped flake, very thin and flat; $1\frac{1}{2}$ in. long, 1/6
- 3070 **Lance Head**, long ridged flake, bleached flint; $2\frac{1}{2}$ in. long. TOWER FIELD, 1890, 2/-
- 3071 **Lance Head**, narrow ridged flake, broad butt; $1\frac{1}{2}$ in. long, 2/-
- 3072 **Lance Head**, narrow ridged flake, bleached flint; $2\frac{1}{2}$ in. long, 1/6
- 3073 **Hand Chisel**, a narrow exterior flake, part of original crust on one face, the edge ground with a short bevel on one face and a longer bevel on the other, edge worn; 2 in. long. TOWER FIELD, 2/6
- 3074 **Pick** (?), long narrow shape, with facets running from end to end; 4 in. long. OLD HILL, GREEN STREET GREEN, 6/-
- 3075 **Pick** (?), another, 4 in. long, 6/-
- 3076 **Pick** (?), another, 4 in. long. SNAG LANE, 1892, 5/-
- 3077 **Pick** (?), another, $3\frac{1}{2}$ in. long, 3/-
- 3078 **Pointed Implement**, roughly chipped, ochreous coloured, with natural hollow on one of the faces, wedge shaped butt (point broken); $6\frac{1}{2}$ in. long. GREEN STREET GREEN 1888, 10/6
- 3079 **Pointed Implement**, somewhat ovate in form, boldly chipped with large facets, thick butt, with part of natural crust; $4\frac{1}{2}$ in. long. HALSTED, 7/6
- 3080 **Pointed Implement**, ovate-lanceolate, slightly ochreous coloured; 4 in. long. OLD HILL, 1892, 6/-
- 3081 **Pointed Implement**, ovate, broad butt, natural hollows on both faces, one face bleached; 4 in. long. SNAG LANE, 1892, 6/-
- 3082 **Pointed Implement**, ovate, broad wedge shaped butt as if for hand use, ochreous coloured; 4 in. long. SNAG LANE, 1890, 5/-
- 3083 **Pointed Implement**, triangular, slightly curved sides, one face nearly flat, sharply truncated butt, pale ochreous colour; $3\frac{1}{2}$ in. long. OLD HILL, 1892, 6/-
- 3084 **Pointed Implement**, long narrow form, rounded point, fairly defined centre ridge on one face, sharply truncated butt; $4\frac{1}{2}$ in. long. ORPINGTON VILLAGE, 6/-
- 3085 **Pointed Implement**, slightly curved, boldly chipped with large facets towards point, the truncated end showing large portion of original crust and deep natural hole; 4 in. long. SNAG LANE, 5/-
- 3086 **Pointed Implement**, leaf shaped, slightly curved sides, one face flat, the other with large facets, part of original crust at butt; 4 in. long. WEST DRAYTON, 5/-
- 3087 **Pointed Implement**, leaf shaped, deep ochreous stains; $3\frac{1}{2}$ in. long. HANWELL, 5/-
- 3088 **Pointed Implement**, another, point broken; 4 in. long. SNAG LANE, 4/-
- 3089 **Pointed Implement**, another, point broken; 3 in. long. SNAG LANE, 4/-
- 3090 **Pointed Implement**, curved leaf shape, boldly chipped, wedge shaped round butt; 4 in. long. SNAG LANE, 6/-
- 3091 **Pointed Implement**, curved leaf shape, triangular section, broad wedge shaped butt; 3 in. long. OLD HILL, 4/-
- 3092 **Pointed Implement**, curved leaf shape, one face flat, the other convex, thin butt; $3\frac{1}{2}$ in. long. OLD HILL, 1891, 5/-
- 3093 **Pointed Implement**, oval, thin, boldly chipped, narrow truncated butt; 4 in. long. SNAG LANE, 1892, 5/-
- 3094 **Pointed Implement**, leaf shape, one face flat, narrow truncated butt; $2\frac{1}{2}$ in. long. OLD HILL, 1892, 4/-
- 3095 **Pointed Implement**, tongue shape, one face flat, truncated butt, bleached flint; $3\frac{1}{2}$ in. long. TOWER FIELD, 1890, 6/-
- 3096 **Pointed Implement**, tongue shape, one face flat, truncated butt, bleached flint; $3\frac{1}{2}$ in. long. OLD HILL, 1892, 5/-
- 3097 **Pointed Implement**, tongue shape, both faces convex, truncated butt; $2\frac{1}{2}$ in. long, 4/-
- 3098 **Scraper or Flesher**, oval, one side left thick as the back of a knife, with original crust, ochreous colour; $4\frac{1}{2}$ in. by $2\frac{1}{2}$ in. SNAG LANE, 5/-
- 3099 **Scraper**, formed like a horse's hoof; $3\frac{1}{2}$ in. by $3\frac{1}{2}$ in. OLD HILL, 1888, 5/-
- 3100 **Scraper**, kite shape, one face flat, the other with centre ridge, pointed butt; $2\frac{1}{2}$ in. long, 2/6
- 3101 **Scraper**, kite shape, the flat face showing part of original crust; $3\frac{1}{2}$ in. long. SNAG LANE, 5/-
- 3102 **Scraper**, kite shape, very thin and flat, truncated butt; $2\frac{1}{2}$ in. high. SNAG LANE, 4/-
- 3103 **Scraper**, duck-bill shape, parallel sides, $3\frac{1}{2}$ in. long. OLD HILL, 1891, 2/-
- 3104 **Scraper**, duck-bill shape, parallel sides; 3 in. long. SNAG LANE, 2/-
- 3105 **Scraper**, triangular, three nicely worked cutting edges, two of the corners truncated; $1\frac{1}{2}$ in. by $1\frac{1}{2}$ in., 2/6
- 3106 **Scraper**, fan shape, truncated butt, lustrous dark grey flint; $2\frac{1}{2}$ in. long, 4/-
- 3107 **Scraper**, fan shape, irregular at one side, truncated butt, bleached flint; 2 in. long, 2/6
- 3108 **Scraper**, discoidal, part of original crust showing on convex face; $1\frac{1}{2}$ in. dia., 1/6
- 3109 **Scraper**, horseshoe shape, bleached flint; $2\frac{1}{2}$ in. long, 2/6
- 3110 **Scraper**, horseshoe shape, bleached flint; $2\frac{1}{2}$ in. long, 2/6
- 3111 **Scraper**, horseshoe shape, small nicely chipped flint, $1\frac{1}{2}$ in. long, 1/6
- 3112 **Scraper**, crescent shape, thick butt, edges much worn; $1\frac{1}{2}$ in. by $2\frac{1}{2}$ in., 2/-
- 3113 **Scraper**, almost circular, the butt end chipped into a sort of handle; $1\frac{1}{2}$ in. long. TOWER FIELD, 2/-
- 3114 **Scraper**, scallop-shell shape, the butt forming a sort of tang; $1\frac{1}{2}$ in. long. TOWER FIELD, 1890, 1/6
- 3115 **Scraper**, shaped somewhat as the flat valve of an oyster shell, broad truncated butt; $2\frac{1}{2}$ in. long, 2/-
- 3116 **Scraper**, triangle shaped, the point being the natural crust, the broad end chipped with a chisel like edge; $2\frac{1}{2}$ in. long, 2/-
- 3117 **Scraper**, duck-bill shape, $2\frac{1}{2}$ in. long, 1/6
- 3118 **Small Adze**, peculiar form, rounded cutting edge, very similar to one illustrated in Evans, p. 85, but only rough chipped; $3\frac{1}{2}$ in. long. SNAG LANE, 1892, 5/-

FLINT IMPLEMENTS—Continued.

3119 **Small Hand Implement**, natural shaped stone, somewhat like a thumb bent with a curve behind it which is worked on the under face almost flat, and on the upper face in a bevel forming a chisel-like edge; 4in. long. **TOWER FIELD, 7/6**

3120 **Worked Flint, DRILL (?)** about half the length worked up towards a point, the butt end being a natural

stone with the appearance of two truncated legs and part of human body; 3½in. long. **SNAG LANE, 5/-**

3121 **Worked Flint**, long narrow, ridged flake, possibly a lance head or scraper: 3½in. long, **2/-**

3122 **Worked Flints**, a number, leaf shaped, pointed, ovate, etc., to which it is difficult to assign any definite use; 2 very interesting lot: each **2/-**

IRON.

3123 **Gothic Iron Knecker**, with two projecting axles for hanging in sockets, the upper part shaped as an open half circle with shield in centre, the lower a band of square section chamfered at the corners, bent to form the striker; 7in. high, **21/-**

3124 **Elizabethan Spear Head**, long tapering blade ridged in the centre, rounded at the haft end, socketed haft, 16in. long, **7/6**

3125 **Spurs**, a pair, iron, large seven pointed rowels set in scrolled frames terminating in pierced rosettes, the grips chiselled in chevron pattern; 9in. long, **1 guinea.**

3126 **Stirrups**, a pair, iron, oval pierced foot-rest, the front part arched over with bars, swivel loop for the strap; 6½in. high, **10/6**

IVORY CARVINGS.

3127 **Ivory Statuette**, man with hurdy-gurdy and rats, one on his shoulder and the other on the instrument; very pretty old carving 5½in. high, on hexagonal carved wood pedestal, total height 10in., **8 guineas**

3128 **Ivory Statuette**, an Italian peasant wearing slouched hat and feather, a goatskin cloak and sandals; an old carving, 5½in. high, on carved wood circular pedestal, total height 7½in., **£6 12s 6d**

3129 **Ivory Statuette**, Italian figure in cloak and silk tied knee breeches, with bagpipes, about to strike with a stick held over the left shoulder; an old carving 5½in. high, on carved wood pedestal, 7in. high, **£5 10s**

JAPANESE OBJECTS.

3130 **A Collection of Tsubas**, iron, showing various types and schools of design, 100, in ten trays fitting one into the other, forming a cabinet of polished wood 15in. high by 13in. by 9½in., **18 guineas**

Each tray contains 10 of various designs of a similar character, damascened in gold, or silver, or metal, chased in low or high relief, plainly pierced, or with hair piercing, or pierced and chased, or cut in intaglio, and the following masters are represented: Miochin Muneharu, Yasuchika, Shojusei Joshin, Tomohisa, Kunitaka, Umitada, Masachika, Shoami, Kinai, Matsasune, Masakatsu, Tadakatsu, Kunihide, Veiju, Shozui, Masamitsu, Tamashiro, Masanao, Rinshi, etc.

3131 **A Beetle**, russett iron, jointed in legs, wings, neck, head, and antennæ, a fine specimen; from head to tail 1½in. long, **1 guinea**

3132 **A Praying Mantis**, russet iron, exquisitely articulated, the two pairs of wings opening, each leg, the head, and the neck jointed, altogether a delicate piece of work; from head to tail 3½in. long, **£1 10s**

3133 **An Oni**, large carved wood figure standing with head thrown back looking upward, holding a branch of a tree with forked top in his right hand, inlaid eyes, robes carved and decorated with designs in red and black lac and gold outlines, signed, fine figure for an electric light; 30in. high, **£5 10s**

3134 **Bamboo Beaker**, very fine old carving representing on the front side the Sages of the Bamboo Grove, the forest splendidly undercut, showing the canes four deep (cracked at the back) 7in. high, 6½in. dia. **1 guinea**

3135 **Bronze Box**, Japanese, in form of Daruma, a Sennin who sat so long in meditation that he lost the use of his legs; 4½in. high, **8/6**

3136 **Bronze Group**, old, a warrior, sword in hand, with one foot planted on the back of a dragon whose coils rest partly on rock, the head by the edge of the sea and tail erect in the air; 15in. high, 15½wide, 10in. deep, **8 guineas**

3137 **Bronze Vase**, Japanese, bulbous shape with circular socket on each side of the neck, raised ornament on neck and round body. Used for a house game of dart throwing. 8in. high, **12/6**

3138 **Buddha** in youth, old bronze, a rare representation standing on rock work, with right hand extended holding a rice cake, left hand on upraised knee holding a bird, on wooden block, 7½in. high, **25/-** *Mayhew Collection*

JAPANESE OBJECTS—Continued.

3139 **Candlestick**, old Japanese, bronze, shaped as a Badger sitting on its haunches beating its distended stomach (the Jap. Will-o'-the-wisp) and upholding a pricket topped shaft; 6½ in. high, **1 guinea**

3140 **Candlestick**, old Japanese, bronze, base a reclining ox with two calves climbing on its back, ornamental shaft and pricket top; 6½ in. high, **15/-**

3141 **Koro**, old Japanese, bronze, ovate, three raised heart-shaped panels on sides tapering off into feet, each with nicely chased floral design in relief; pierced cover; 4½ in. high, **1 guinea**

3142 **Temple Candlestick**, old Japanese, bronze; the shaft shaped as a tall stalk of flowering chrysanthemums springing from rustic base, and terminating in a pricket top; 13¼ in. high, **£1 5s.**

3143 **Temple Candlestick**, old Japanese, bronze an ornamental shaft with pricket top, rises from the back of a Hare (who represents the hour of 6 A.M.) standing on a circular base; 12¼ in. high, **1 guinea**

3144 **Temple Candlestick**, old Japanese bronze, fluted domed circular base, lower half of the shaft ribbed and flanked by two curving chrysanthemum boughs, above, two dragons clinging to the sides, and higher up, shaped as an open work

branch of flowering chrysanthemums; plain circular cup and pricket at top; 21¼ in. high, **3 guineas**

3145 **Temple Candlestick**, old Japanese, bronze; bell shaped base ornamented with bosses, moulded shaft with four plantain leaves standing round the lower part, and pierced wing-like projections higher up; pricket top; 19¼ in. high, **£2 5s**

3146 **Temple Candlestick**, old Japanese, bronze, the shaft shaped as a double gourd standing on end, and composed of leaves, fruit, and tendrils of the gourd in open work; pricket top; 8 in. high, **17/6**

3147 **Short Sword**, carved ivory hilt, and scabbard, trees, figures, and elephant caparisoned with howdah on one side, and procession on the other; the *Kodzuka* handle carved with birds in trees; engraved blade; 15 in. long, in French morocco case, silk lined, 16½ in. by 3½ in., **4 guineas**

3148 **Vase Stands**, a set of five, square tops on four tall plain legs with cross bars at the bases, all alike, but in graduated sizes; 12 in., 10½ in., 9½ in., 8½ in., and 7 in. high. Very nicely finished in polished dark wood and invaluable for the artistic arrangement of flowers; a nice Christmas Present. The set, **£1 5s**

L A C.

3149 **Avanturine Lac Box**, oblong, slightly domed lid, rounded corners, rich gold powdering and decoration of fir trees and peaches on cover and sides; 2½ in. high by 5 in. by 4 in., **£1 15s**

3150 **Black Lac Ash Box**, square, upright tapering upwards, corners fluted, decorated with flowering plants and a Prince's crest in gold; gilt brass liner; 3½ in. high, **£1 5s**

3151 **Black Lac Firebox**, oblong, *en suite* with the foregoing; 3 in. high by 5 in. by 4 in., **£1 15s**

3152 **Card Case**, black lac, decorated on one side with three open fans with landscape and other patterns, on the other convolvuli growing up bamboo, birds and insects flying around, all in gold lac, 4½ in. by 3 in., **1 guinea**

3153 **Carved Lac Candlestick**, an old temple piece, very fine lustrous black lac imposed upon a polished wood base, and carved and cut away to show the yellow wood through the design of floral ornament and mythical creatures; 15½ in. high, **£1 5s**

3154 **Gouri Lac Inro**, carved in geometric design showing the layers of red and black, two compartments; 2½ in. high, **10/6**

3155 **Inro**, avanturine ground on black lac with chrysanthemum flowers and leaves in silver, gold, and brown, signed *Kakosai*; five compartments; 3½ in. high, **2 guineas**

3156 **Inro**, gold lac, Kajikawa school, landscape, fir trees, and hawthorn; finely shaded; five compartments; 3½ in. high, **£1 10s**

3157 **Inro**, gold lac, Kajikawa school, clouds, rocks and waves, with conifers and maple: five compartments; 3½ in. high, **£1 5s**

3158 **Inro**, black lac, an eagle chasing a crane across water with aquatic plants on one side, and another eagle on the other side, all in highly raised gold; three compartments; 2½ in. high, **£1 5s**

3159 **Inro**, red, black and gold lac, warriors and war galley, nice old 18th cent. piece; four compartments; 3½ in. high, **17/6**

3160 **Old Cashmere Lac Ewer**, red cover, handle shaped as a monster, decorated over the whole surface with figures, flowers and birds in rich colours on a cream ground; 12 in. high, **2 guineas**

3161 **Old Cashmere Lac Bowl** and cover, similar style of decoration to the foregoing; 4½ in. high, **10/6**

3162 **Old Cashmere Lac Dish**, saucer shape, same style of decoration as the foregoing; 5½ in. dia., **10/6**

3163 **Old Persian Lac Pen Case**, rounded top and ends, black with flowers in colours outlined with gold; 2 in. high, 11 in. long, 2½ in. wide, **35/-**

3164 **Old Persian Lac Pen Case**, decorated with raised floral design in subdued colours on a creamy white ground; 1½ in. high, 9½ in. long, 1½ in. wide, **1 guinea**

MINIATURES.

3165 **Ernest Augustus**, Elector of Hanover, father of George I. of England, finely painted portrait, the bust in armour, the left shoulder covered with an ermine robe; oval, in turned wood frame, 3½in. by 3½in., **6 guineas** *Beck Collection*

3166 **George I.**, fine miniature in oils, by Geo. Hunt. bust, oval, 1½in high, in gilt metal frame, **50/-** *Beck Collection*

3167 **Countess of Dudley**, miniature on ivory (modern), oval in gilt metal pendant frame, 2½in. by 2in., in stand up morocco case, with folding doors, 4½in. by 3½in., **1 guinea**

3168 **Miniature**, on ivory, a young lady in low necked dress with very high waist and short sleeves, very finely painted; oval, 3½in high by 3½in., in original red morocco case; **5 guineas**

3169 **Miniature**, on ivory, fine portrait of a young and handsome man in high collar and cravat with waistcoat flaps showing outside coat; signed J. T. Mitchell 1806" 3½in. by 2½in., in original red morocco square case; **4 guineas**

3170 **Roger Kemble**, fine miniature on ivory, painted by Ozias Humphrey, oval, 2½in high., in charming gilt wood frame, 4½in high, **5 guineas** *Beck Collection*

On back is written "Presented to me by Mrs. Blakiston as a memento of her husband, who died Feb. 1st, 1871. Rev. R. Blackiston."

3171 **Rose Hudson**, painted by her husband, Samuel Drummond, R.A., contained in a locket of fine gold, 1½in. high; a most lovely miniature, **8 guineas** *Beck Collection*

MUSICAL BOX.

3172 **Musical Box**, by Nicole Freres, Geneva, full compass, 23in. barrel, playing 12 selections from the works of Gounod, Auber, Mozart, Flotow, Rossini, Donizetti, Bellini, Ardit, and Offenbach in finely inlaid French walnut case with centre panels on lid and front side; brass handles, glass lid inside, lock and key, in perfect working order; 10in high, 41½in. wide, 15½in. deep, **15 guineas**

NAPOLEON SOUVENIRS.

3173 **Napoleon I.**, fine cliche of the medal by Andrieu, laureated head, circular, 5½in. dia., in square frame with gilt moulding and plush mount, 11½in. square, **10/6**

3174 **Napoleon and Marie Louise**, fine cliche of the medal by Andrieu, circular, 5½in. dia., in square frame, to match the foregoing, **10/6**

3175 **Napoleon Crossing the Alps**, large plaque with moulded and fluted frame work in form of a framed picture, Berlin ironwork; 13½in. by 1½in., **18/6**

3176 **Napoleon Medals**, a series of 10 beautifully executed Bronzed Cliches of Medals, by Andrieu, representing Siege of the Bastille; arrival of the King in Paris October 6th; Bonaparte first Consul; Passage of Mount St. Bernard; Napoleon Emperor; Napoleon Emperor and King; Josephine Empress; Marie Louise Empress; and two very large ones: Napoleon, and Napoleon with Marie Louise: all glazed and fitted into two trays lined with pale blue velvet, in box bound in purple morocco, gilt back and sides, as a book, **£3 10s**

These medallions are considered to be among the most beautiful ever executed in any country.

RELICS.

3177 **King's Bench Prison**, a relic, consisting of a zinc cubical box with slit for money, which held the coins of the realm placed in the foundation stone; bought from the contractor who pulled down the prison; 7in. high, **10/6**

3178 **Royal Relic**, large fine lawn Pocket Handkerchief (26in. by 28in.), narrow beautifully sewn border, marked G. R. 1827, surmounted by Royal Crown in red, fine preservation, **1 guinea**

Bequeathed to its late owner by the Rev. Dr. James Stainer Clarke, Canon of Windsor and Chaplain to the King.

DUTCH TILES.

J. & M. L. TREGASKIS, having purchased a large number of old Dutch Tiles are now offering them for sale at exceptionally moderate prices. The following descriptions will indicate the style of decoration of each class of tile selected, but must not be taken as the description of every tile in that class, all being hand painted and varying greatly, yet maintaining a common plan of ornament. Size 5½in square.

3179 **Figures**, small subjects in centre, one or more figures of peasants, and small corner ornaments, blue and white, **10d** per tile About 400 in stock

3180 **Scriptural, Classical or Pastoral** scenes, within a small circle, and small corner ornaments, blue and white, **11d** per tile About 400 in stock.

DUTCH TILES—(Continued).

3181 **Floral**, in the centre a vase with tall upright stalk flanked on each side by two curved stalks of conventional flowers; small corner ornaments, blue and white, 10d per tile. About 600 in stock

3182 **Scriptural, Classical or Pastoral** scenes disposed horizontally across the tiles, with small corner ornaments, blue and white; a very fine lot. 1/- per tile. About 500 in stock

3183 **Scriptural** scenes, within a circle occupying nearly the whole surface with corner ornament; chocolate and white, 1/- per tile. About 20 in stock

3184 **Figures or Animals** within a broad quatrefoil occupying the full size of the tile, the corners filled in with broad line ornament, blue and white, 1/2 per tile. About 300 in stock

3185 **Large Figures**, in old time costumes, bearing implements of war, music, etc., occupying nearly the full height of the tile; with fleur de lys in the corners, blue and white, 1/3 per tile. About 25 in stock

3186 **Ships**, a series of vessels in full sail, small ornament in the corners; a very fine and rare lot, blue and white, 1/6 per tile. About 20 in stock

3187 **Coloured Tiles** of the Spanish Period. A diamond shaped panel in yellow enclosing a vase filled with conventional flowers in yellow, green, blue and red; the corners filled with blue ornament. Others with circular panels enclosing birds or figures. Others with floral ornament equally disposed over the whole surface, 1/6 per tile. About 20 various in stock. Fine and rare.

3188 **Marine Monsters**, a series of very quaint inhabitants of the sea, mermaids, etc., 1/- per tile, 200 in stock

XVII. CENTURY SPANISH TILES.

The fine and rare collection of Seventeenth Century Tiles here described are all of the same style of decoration; the groundwork of the tiles being white, with slightly depressed design and sharp outline enclosing each colour used, fine chromatic glaze, giving great brilliancy and effect to the colours beneath.

In each case the size given is that of the decoration, irrespective of margin; height first.

3189 **Twenty-three**, each two forming the pattern. Design, a diamond shaped panel formed by bands of yellow with raised diagonal ornament, containing green quatrefoil with a circular centre in green and black, and green and yellow; each tile 9½ in. by 5½ in., £4 10s

3190 **Twenty-two**, forming continuous bands of ornament, each tile having two horizontal lines of raised blue ornament in form of a Moorish arch, and its reverse alternately, 9½ in. by 4½ in., £1 15s

3191 **Twelve**, each two forming a pattern. Design: scrolled corners: panel formed by a flamed radiated circle in yellow and green, with yellow shield bearing a raised inscription around it, SAGIS WARES TU DOMINE COR MIR CARITATE TUA, with dark coloured heart pierced by an arrow and dagger in centre, beneath a hat and maniple in blue, 9 in. by 5 in., £3 3s

3192 **Eight**, each two forming a pattern. Design: green corner pieces with yellow and green lines across; octagonal panel in yellow bands with pale blue quatrefoils at intervals raised on the yellow ground, an inner line of black; radiated leaf device in alternate yellow and green, with pale blue centre in panel; 9 in. by 5½ in., £1 12s 6d

3193 **Eight**, each two forming pattern. Design: green and blue scroll in corners: panel shaped as a square and diamond overlaid, of blue, yellow, and dark green lines, with upright ornament in centre, in pale blue and yellowish brown; 8½ in. by 5 in., £1 15s

3194 **Six**, each two forming pattern. Design: pale blue bands top and bottom: panel formed by broad circular band of pale blue with raised yellow scroll, four point centre of blue and yellow with three-leaved device in green and yellow to fill in; 10½ in. by 5 in., £1 7s 6d

3195 **Two**, same in every particular as No. 3214, 10/6

3196 **Four**, each two forming pattern. Design: brown lines across corners enclosing floral ornament; yellow flamed border round circular bands of brown and blue with white interspersed raised ornaments on the blue, yellow, and green, floral device in centre; 9½ in. by 5½ in., £1 1s

3197 **Two**, same design as preceding, but slightly varying in the disposition of the colours, 10/6

3198 **Two**, forming one design; circular bands of brown with gothic intertwined leaf and stalk device running between; centre, interlaced square and diamond in white strap work on blue ground, with some of the spaces filled in with brown and yellow; 9½ in. by 5½ in., 10/6

3199 **Four**, similar design as preceding, but slightly varying in the disposition of the colours, 1 guinea

3200 **Four**, forming one pattern. Design: straight band of brown at top and bottom, curved, bracket-wise, at the sides, enclosing a very pretty moresque design in pale blue, yellow, and green. Size of the four, 9½ in. high by 20½ in. wide, 1 guinea

3201 **Eight**, each two forming pattern. Design green: leaf in corners; panel formed by broad circular band of pale blue with black outlines, and raised yellow scrolls flowing within it, green floral device in four divisions in centre, relieved by red; 10 in. by 5½ in., £1 15s

3202 **Four**, each two forming a pattern. Design: blue and brown lines across, corners enclosing leaf ornament; yellow flamed border round circular band of yellow with white raised design and outer and inner lines of blue, green radiated leaf centre, 9½ in. by 5 in., 1 guinea

3203 **Four**, each two forming pattern. Design: broad octagonal flame of blue, yellow, green, and white, with radiated leaf centre, alternate blue and green with yellow between each, 10 in. by 5 in., 17/6

3204 **Twelve** small square tiles, forming three sets of four, making the same pattern as No. 3192; size of each set, 10½ in. square, 12/6

3205 **Ten** small square Tiles, each having a double zigzag border pattern running horizontally, blue and yellow, showing white cubes, 5½ in. square, 15/-

3206 **Five Full Tiles** and 18 halves, making 14 Tiles, each forming a complete pattern, an oblong diamond panel in brown and sienna lines, the centre filled in with ornament in green, brown, and pale blue; 10 in. by 5 in., £1 10s

3207 **Four**, square Tiles for bordering, each having a double angular block ornament showing sides of yellow, green, and blue; 4½ in. sq., 7/6

3208 **Eight** small Tiles forming two sets, with crossed branching pattern of leafy stems in blue, yellow, brown, and green; 5½ in. by 5 in., 8/6

3209 **Four** small square Tiles each complete in itself; bands of blue and yellow across corners forming diamond panel with cruciform floral ornament in green and yellow in centre; 4½ in. sq., 8/6

3210 **One**, with large fluted vase of flowers in blue and green, cut at the back wedge shape, 7½ in. sq., 7/6

3211 **One**, with central branching stem in deep blue, surrounded by fruit shaped offshoots in yellow and green, 8 in. by 7½ in., 7/6

3212 **Thirty-six** Border Tiles, horizontal pattern. Blue tiger tooth shaped ornament point downwards, with yellow device in between, 2½ in. high by 5½ in. wide, 2 guineas

3213 **Sixteen**, horizontal border Tiles, with guilloche ornament, alternate blue and yellow bands, with centre black stem running through; 2½ in. by 4½ in., 1 guinea

XVII. CENTURY SPANISH TILES—(Continued).

The following three items would make up splendidly for the jambs and frieze of a fireplace, or if not high enough, might be added to by two of the Tiles already described.

3214 **Eight Tiles**, forming four squares. Design: green foliated ornament in corners; shaped quatrefoil panel in bands of blue and yellow, with straggling foliated ornament from centre to corners; 4½in. by 9½in.

3215 **Eight Tiles**, forming four squares. Design: green and yellow foliated ornament in corners; quatrefoil panel in centre. The set of 25, 8 guineas

brown and yellow hues, with green, brown and blue floral centre, 4½in. by 9in.

3216 **Nine Tiles** for frieze, forming interlaced quatrefoils of yellow bands with green leaves between; centre ground colour pale blue, with alternate Tudor roses and fleur-de-lys slightly raised in yellow, 10½in. by 5in.; total width, 3ft. 9½in.

TILES (Various).

3217 **Dutch Tiles**, period of the Spanish occupation of Holland, orange, blue, and white, 16 tiles, each 5½in. square and ½in. thick, making a pattern 11½in. by 46in., the set, 3 guineas

The ground work is orange, the design is of interlaced strap work forming a quatrefoil centre in each set of four, thus making three central sets of complete design, and two half sets, one at each end.

3218 **Mediæval English Tile**, yellowish ground, with design of a wheel inlaid with red clay, glazed, from St. Alban's, 4in. square, in ebonized frame, 7½in. square, 1 guinea *Westendarp Collection* XII. Cent.

3219 **Mediæval English Tiles**, two Encaustic tiles, with the same pattern in colours, from Gloucester, tiles 5½in. square, in ebonised wood frames, 8½in. square; each 18.6 *Westendarp Collection* XV. Cent.

3220 **Tiles**, two sets, each of nine old blue and white Dutch tiles, forming a pair of columns filled with vine and grape ornament, with a peacock, parrot, and amorini between. The base of one bears a landscape, the other a female figure seated beside an urn, in ebonised wood frames 49in. high by 10½in. wide. The pair 6 guineas

TOBACCO PIPES.

At first the plainest and most unassuming of man's ministers, the pipe was gradually elevated to the rank of soothing fellowship, and therefore must needs be fair to the eye and grateful to the touch. Hence was the skill of the craftsman brought to bear upon the task of endowing with graceful outline and rich ornament the mute companion of the student and the statesman. We find accordingly that potters and miniature painters, carvers of wood and ivory, not to mention other artificers, have in turn exercised their talents in beautifying the instrument which has brought bliss, contentment, and even inspiration to the man of contemplative moods; of their handiwork it is the purpose of this modest collection to exhibit such worthy specimens as may appeal to art lovers of many schools.

3221 **Very large white Berlin China**, bowl with hubble bubble reservoir, silver mounts—front of bowl painted with miniatures of the Emperor Alexander I. of Russia, King Frederick William of Prussia, and the Emperor Francis Joseph of Austria, in commemoration of the war against Napoleon; the egg-shaped base is richly decorated with heraldic grouping, and graceful gilt scrolls; a very remarkable and attractive piece, measuring 13 inches from rim to base, 4 guineas *circa 1813*

3222 **Massive Wood Bowl** and long stem, metal lid modelled to represent helmet of a French sapeur-pompier, brass mounts: about 12in. of the length of the stem is covered with very minute and beautiful bead work, which adds considerably to the curious attractions of this giant pipe, £2 5s

3223 **Vienna China Bowl**, representing a Hungarian Haiduck, large and massive, brilliant flesh tints, very handsome, silver lid and steel mounts, £1 15s

3224 **Zurich China Bowl**, painted with brilliant and very descriptive miniature of the battle of Sempach, quite a multitude of figures in the very thick of the fight, a beautiful bit of detailed work, finished with deep gilt bands, metal fittings £2 10s *circa 1800*

3225 **Exceedingly Handsome Blue and White Berlin China**, urn shaped bowl, lid of same material, silver mounts and ornaments, bowl with fluted base, over which is a broad white band, with view of wreathed maidens disporting themselves in the sea, stem in blue enamel, modelled after a posthorn, 5 guineas *circa 1814*

This pipe was presented by Frederick William III. of Prussia to Postmaster (General) von Naylor. The bowl is a thing of real beauty both in shape and colour, while the miniature painting which adorns it is very fine. Remarkable for size as well as elegance, it can be comfortably grasped only by a large hand.

3226 **A Replica of No. 3223**, with slightly lighter colouring and varied mount, very massive and shapely, £1 15s

3227 **German China Bowl**, painted with full-length portrait of Gustavus Adolphus in military costume, handsome silver lid, with cluster of fruit in relief on top, and pierced sides, 2 guineas *late 18th Cent.*

3228 **Carved Wood Pipe**, large deep bowl with projecting parts, all most curiously carved with human and animal faces blending one in another; from the celebrated Bragg collection; 12in. high, 8½in. wide from bowl to nozzle for stem, 2 guineas

TOBACCO PIPES—Continued.

- 3229 **French Clay Bowl**, partly glazed and coloured, of grotesque model, an expressive face, long beard, and feet of a quadruped, quite a curiosity, 12/6 *circa 1840*
- 3230 **Spanish Glass Pipe**, very light and delicate, ribbed spiral bent stem, spiral raised thread round bowl, and bent glass projecting ornament, £1 10s *circa 1780*
- 3231 **Venetian Glass Bowl**, clear, with combed and twisted opaque white *latissimo*, curious shape, £1 2s 6d *late 18th Cent.*
- 3232 **Glass Bowl**, elegant shape, pillared base, ribbed tube, clay lining to bowl, pointed metal lid, £1 5s *circa 1800*
- 3233 **Furstenberg China Pipe**, bowl and stem both screwing into a horn-shaped China base, profusely decorated with bright flower-garlands and posies, broken by broad blue bands picked out with black, an exceedingly brilliant piece 2 guineas *late 18th Cent.*
- 3234 **Zurich China Bowl**, figure of a man carrying a *hut* or basket on his back, standing on a curved ground forming the tube, bright colours red, green, blue, etc., very quaint £1 5s *circa 1790*
- 3235 **Furstenberg China Bowl**, representing a terrier seated on a clenched hand with hinged head forming cover, small and curious, £1 2s 6d *circa 1790*
- 3236 **Berlin China Bowl**, hexagonal, panels painted alternate landscapes and figures, rest of bowl deep chocolate, with moulded gilt base, £1 2s 6d *circa 1830*
- 3237 **Sevres Biscuit Bowl**, very elaborately worked, with deeply pierced and very graceful acanthus foliage, lace-like vandyked rim; a perfect gem of its kind, and very rare, 2 guineas *circa 1780*
- 3238 **Sevres Porcelain Bowl**, white, powdered with red and gilt stars, base richly ornamented with raised foliage gilt, gilt rims, very handsome, £2 7s 6d *circa 1780*
- 3239 **Dresden China Bowl**, white, raised basket work ground with small flowers, painted in compartments, silver lid and mounts, elegant shape, 2½ in. high, £1 5s *18th Cent.*
- 3240 **Anspach China Bowl**, white, fluted with blue stripes, surmounted by wreaths of forget-me-nots, in relief, metal fittings, pierced china lid, florally treated, very pretty, 2½ in. high, £1 10s *18th Cent.*
- 3241 **German China Bowl**, ingeniously painted with rebuses, etc., billiard cues, boot-jack, syringe, snail, and other miscellaneous objects and a pretty hill-side scene, dogs, etc., metal mounts, very interesting (cracked) 6½ in. high, 1 guinea *circa 1840*
- 3242 **German China Bowl**, with finely painted sepia portrait of Schiller, silver lid, with Cupid, the doves of Venus and a Dog in repoussé, very neat, £1 10s *circa 1840*
- 3243 **German China Bowl**, white, painted with caricature of a general with eye-glass inspecting a garden, clear colour and graceful form, 1 guinea *circa 1840*
- 3244 **German China Bowl**, long and slender, white, painted with butterfly, beetle, flies, lady-bird, etc., 1 guinea *circa 1840*
- 3245 **German China Bowl**, painted with charmingly executed caricature of a cavalry officer, 1 guinea *circa 1840*
- 3246 **Frankenthal China Bowl**, brilliantly painted to represent a turbaned female head, very bright colours, £1 5s *late 18th Cent.*
- 3247 **Furstenberg China Bowl**, lady's head in fancy headdress, brightly painted (piece of tube missing), very pretty, 18/6 *late 18th Cent.*
- 3248 **Berlin China Bowl**, large, cylindrical, finely painted with clusters of corn flowers, roses, forget-me-nots, etc., gilded rims, very bright and pretty, 4½ in. high, £1 5s *circa 1800*
- 3249 **Thuringia China Bowl**, almost cylindrical, broad painted belt in the centre, with pretty little landscape and water scene, 1 guinea *circa 1780*
- 3250 **French China Bowl**, slender octagonal shape, painted coloured patterns, metal mounts and lid, £1 10s *circa 1830*
- 3251 **French China Bowl**, covered with an oriental grey splash, very delicate, with gilt rim, etc., very distingué and shapely, 1 guinea
- 3252 **English Carved Wood Bowl**, with a figure of Justice flanked by those of Mars and Venus, all in very high relief, supported on brackets formed by grotesque heads, interstices filled in with light scrolls, 3 guineas *late 18th Cent.*
- 3253 **Natural Wood Pipe**, in form of a grotesque Bear, the similitude slightly heightened by carving, head forming cover with eyes pierced for the emission of smoke, natural knotted stem, an exceedingly curious object, 2 guineas *18th Cent.*
- 3254 **Carved Wood Large Cylindrical Bowl**, with arms of Dettingen quartered with those of Prince Fugger, base supported by a remarkably fine set of dragon's claws, metal cover and mounts, a rich piece, £2 10s *18th Cent.*
- 3255 **Dutch Carved Bowl**, in highly polished red wood, a lion with mouth, eyes and ears pierced for the emission of smoke, a thoroughly virile piece of work, 2 guineas
- 3256 **Dutch Pipe**, dog carved in dark wood, head forming lid, horn and metal accessories to a partly flexible stem, £1 10s
- 3257 **Carved Wood Large Cylindrical Bowl**, metal cover, splendid specimen of a Master's work, an animated picture of knights in fierce combat in very high relief, splendidly undercut, and parts pierced. Between and behind these two principal figures are seen others similarly engaged, a device very rich in effect, 10 guineas *Tournoi, early 18th Cent.*

TOBACCO PIPES—Various.

3258 **German Carved Wood Bowl**, very life-like hunting scene, stag, boars, etc., with hounds in full pursuit, the small space afforded by the bowl's surface is crammed with incident, gilt metal cover with repoussé cherub on top; a really curious and most desirable piece, £2 10s

18th Cent.

3259 **Carved Wood Bowl**, metal mounts, French work, the main design consisting of a serpent, whose huge mouth holds the tube for the stem, while the bowl is supported on his coils; between bowl and tube room is found for a beautifully fashioned eagle, and the fancy of the artist shows itself in animal life on the surface of the bowl. The shining russett of the wood serves well to display his fruitful industry, 2 guineas

3260 **French Carved Wood Bowl**, head of a stag; between the antlers appears a charming little woodland scene with a hound for central figure, the neatest possible bit of carving, quite unique; metal cover and mounts, 3 guineas

3261 **French Carved Wood Bowl**, elaborate heraldic device, covering front and sides of bowl, a fine example, £2 7s 6d

18th Cent.

3262 **Old Dutch Colonial Pipe**, carved wood, no mouthpiece; curious doll-like female figure, whose short skirts serve as a bowl for the pipe; quaintness itself, £1 15s

circa 1750

3263 **Oriental Silver Bowl** and cover, prettily embossed, pierced cover, 15/-

about 1780

3264 **Oriental Pipe**, brass bowl and iron stem; slightly chased, very curious, 12/6

3265 **Oriental Bowl**, wood inlaid with mother-o'-pearl, bronze mounts and cover in form of a tope; very pretty, £1 5s

3266 **Japanese Carved Wood Bowl**, figure of a man; a curiosity, 12/6

3267 **French China Bowl**, painted in geometrical patterns, 18/6

about 1830

3268 **Arabian Bowl**, massive terra-cotta, deeply cut with flowing foliated design covering surface of bowl, beautifully finished, very precious; 4½ in. long, 12/6

3269 **Moorish Bowl**, terra-cotta, foliage surmounted by a corona, stem finished with similar design, a very charming bit of colour and clever workmanship; 5½ in. long, 10/6

3270 **Jacobite Clay Pipe**, a small early English pipe, presented to Mr. H. Stacy Marks, R.A., by Charles Keen, 5/-

3271 **Jacobite Clay Pipe**, another, found in 1890 at 17, Hamilton terrace, London, W., 4/-

3272 **French Carved Wood Bowl**, a female head, with mediæval coif and coronet, extremely graceful; the ears are furnished with pendants, and the neck encircled with a double necklace, £1 5s

3273 **English Carved Wood Pipe**, representing a masculine hand clasping a large globe which forms the bowl. The rim is surrounded by a chased foliated collar in silver, and a band of the same work marks the junction with the very handsome horn stem; an interesting piece, 2 guineas

3274 **Cigar Holder**, wood, horn mouthpiece, in shape of a ninepin, 8/6

3275 **French Carved Wood Bowl**, representing in humorous fashion the making of assignation by a couple, in whom, despite their advanced age, love still lives; the portly dame, from the height of her saddle (she rides an ass), chucks her elderly swain under the chin, while under a neighbouring tree sits an old man, evidently making a mental note of the tryst; cottage and tree complete the picture, which, encircling the bowl, is crowned by a wreath of upright leaves, serving with a finial to form the lid; a fishy monster holds in his mouth the tube of the pipe, and the final touch of unity and strength is imparted to the design by a crouching cock, beautifully carved indeed, 4 guineas

3276 **French Carved Wood Bowl**, three faces looking from three of the sides with four china eyes between them, surmounted by band of carved ornament; metal mounts and cover shaped as a three-cornered hat, 12/6

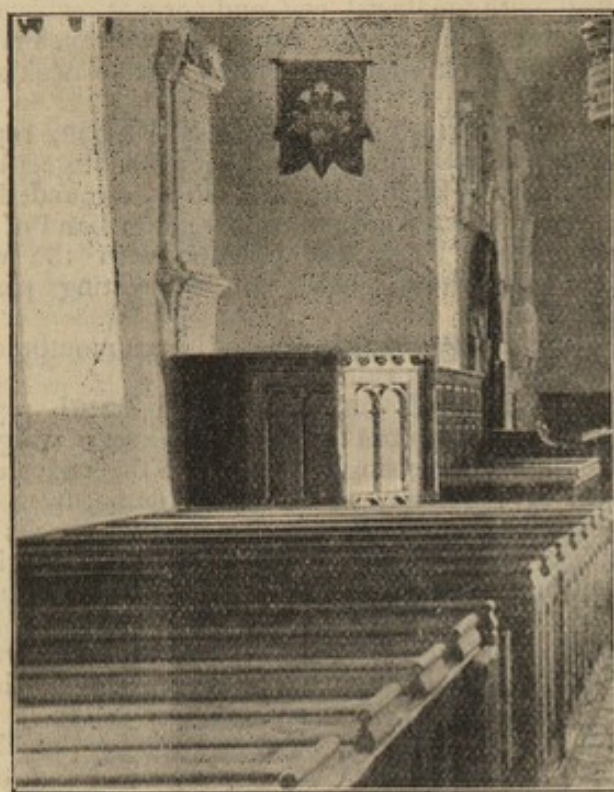
3277 **Black China Bowl**, with skull and cross bones in white, and the motto of the Trappist Monks, "Memento Mori"; brass cover and mounts; horn stem ribbed, fluted and faceted, 10/6

3278 **Chinese Smoker's Pipe Case and Satchel** of blue stuff, embroidered with gold and coloured silks, the satchel bearing a large engraved silver frame, enclosing the name of the whilom owner cut in brass, the whole suspended by five white metal chains passing through a brass clasp, to a white metal double gourd shaped netsuke, for hanging to the waist sash, fine and curious piece, £1 10s

CARVED WOOD.

J. & M. L. TREGASKIS have a very fine and large collection of Old Wood Carving, drawn from various English and Continental sources. Among the examples will be found items lending themselves to easy inclusion in any artistic scheme of decoration, ecclesiastical or domestic. Others, perhaps, are more suitable as models for the Craft-School or for museum purposes; while others, again, may suggest designs for chests, wardrobes or presses, or may even be worked into new frames and themselves form part of such designs. Fruit, flowers, foliage, figures human and grotesque, are among the very diverse decorative material submitted to free or conventional treatment.

WILLIAM PENN OF PENNSYLVANIA.



PULPIT
AND
PULPIT CLOTH,
AND THE
ANCESTRAL PEW
OF THE
Penn Family.

Removed from

PENN CHURCH, BUCKS,
TO THE
"CAXTON HEAD," LONDON, W.C.

8 page descriptive and illustrated Catalogue now ready. Price One Shilling.

"Caxton Head" Catalogue of a Collection of
1302 Works of Art:

COMPRISING

DRAWINGS IN WATER-COLOURS, CRAYONS AND PEN-AND-INK,
OIL PAINTINGS,

Engravings, Etchings, Caricatures, Portraits,
AND
Studies and Drawings by the Old Masters.

Now ready. 40 pages, post free.