

## **Sales catalogue: Glendining**

### **Publication/Creation**

8-12 March 1926

### **Persistent URL**

<https://wellcomecollection.org/works/ucavt78q>

### **License and attribution**

This work has been identified as being free of known restrictions under copyright law, including all related and neighbouring rights and is being made available under the Creative Commons, Public Domain Mark.

You can copy, modify, distribute and perform the work, even for commercial purposes, without asking permission.



Wellcome Collection  
183 Euston Road  
London NW1 2BE UK  
T +44 (0)20 7611 8722  
E [library@wellcomecollection.org](mailto:library@wellcomecollection.org)  
<https://wellcomecollection.org>

Telegraphic Address :  
"NULLIFIED, LONDON."

Telephone :  
GERRARD 4424.

ANTIQUE and  
MODERN  
FURNITURE.

FINE  
ART PROPERTY.

JEWELLERY,  
PLATE, CHINA.

MEDALS, COINS,  
POSTAGE  
STAMPS, ETC.

ORIENTAL  
ART.

1926.

MESSRS.

**Glendining**

AND CO., LTD.

AUCTIONEERS,

7, Argyll Street,  
Oxford Circus, W.1.

Adjoining Oxford Circus Station.

## Catalogue

OF THE

Late Colonel J. Bellhouse Gaskell Collection

INCLUDING

Chinese and Japanese Por-  
celain, Chinese Cloisonne,  
Japanese Ivory Carvings,  
Hardstone Carvings, Chinese  
and Japanese Lacquer, Snuff  
Bottles, Netsuke, etc.

Sold by Order of the Executors.

### DAYS OF SALE :

1st Day, Mon., March 8th, Lots 1 to 230  
2nd Day, Tues., March 9th, Lots 231 to 474  
3rd Day, Wed., March 10th, Lots 475 to 733  
4th Day, Thurs., March 11th, Lots 734 to 985  
5th Day, Fri., March 12th, Lots 986 to 1235

At 1.30 p.m. each day precisely.

On View Thurs., March 4th; Fri., March 5th; Sat.,  
March 6th until 12.30 p.m.; and Mornings of Sale until  
12 noon.



Telephone No.  
GERRARD 4424.

Telegraphic Address:  
NULLIFIED, LONDON.

## Messrs. Glendining & Co., Ltd.

Auctioneers, Surveyors, Land & Estate Agents,

No. 7, ARGYLL STREET, OXFORD CIRCUS, W. 1.

*(Adjoining Oxford Circus Tube Station).*

Valuations for Probate,  
Fire Insurance & Family  
Division carefully made  
by Experts.

Furniture Sales at  
Private Residences  
can be arranged.

***Advances made pending sales.***

FURNITURE, PICTURE and ART SALES  
are held periodically at the Galleries.

No. 7, ARGYLL STREET, OXFORD CIRCUS, W. 1

TERMS ON APPLICATION.



Messrs. Glendining & Co., Limited,  
7, ARGYLL STREET, OXFORD CIRCUS, W 1.

---

*A CATALOGUE*

*OF THE*

Late Colonel J. Bellhouse Gaskell Collection

*INCLUDING*

Chinese & Japanese Porcelain,  
Chinese Cloisonne, Japanese  
Ivory Carvings, Hardstone  
Carvings, Chinese & Japanese  
Lacquer, Snuff Bottles,  
Metsuke, etc.

*SOLD BY ORDER OF THE EXECUTORS.*

---

For Sale by Auction

AT OUR GALLERIES,

7, ARGYLL STREET, OXFORD CIRCUS, W. 1,

ON

MONDAY, TUESDAY, WEDNESDAY, THURSDAY & FRIDAY,

**March 8th, 9th, 10th, 11th & 12th, 1926**

AT 1.30 P.M. PRECISELY EACH DAY.

---

On View Thursday, March 4th; Friday, March 5th; Saturday, March 6th  
until 12.30 p.m.; and Mornings of Sale until **12 noon.**

PLEASE NOTE PLACE AND TIME OF SALE—1.30 P.M.



## CONDITIONS OF SALE.

---

- FIRST.—The highest bidder to be the buyer; and if any dispute arise between two or more bidders, the lot so in dispute shall be immediately put up again and resold, provided the auctioneer cannot decide the said dispute.
- SECOND.—No person to advance less than a 1s. on bids of over £1, 5% on previous offer.
- THIRD.—In the case of lots upon which there is a reserve, the auctioneer shall have the right to bid on behalf of the seller.
- FOURTH.—The purchasers to give in their names and places of abode, and to pay down 5s. in the pound, or more in part of payment, or the whole of the purchase-money, *if required*: in default of which the lot or lots so purchased to be immediately put up again and resold.
- FIFTH.—The lots to be taken away and paid for, whether genuine and authentic or not, with all faults and errors of description, at the buyer's expense and risk, within TWO days from the sale; GLENDINING & CO., Ltd., not being responsible for the correct description, genuineness, or authenticity of, or any default or defect in, any lot, and making no warranty whatever.
- SIXTH.—To prevent inaccuracy in delivery, and inconvenience in the settlement of the purchases, no lot can on any account be removed during the time of sale, and the remainder of the purchase-money must absolutely be paid on the delivery.
- SEVENTH.—Upon failure of complying with the above conditions, the money deposited in part of payment shall be forfeited; all lots uncleared within the time aforesaid shall be resold by public or private sale, and the deficiency (if any) attending such resale shall be made good by the defaulter at this sale.
- EIGHTH.—If any owner has placed a reserve on any lot, the auctioneers reserve to themselves the right to publish the fact and price at which it is reserved.
- NINTH.—Should any china bear trade marks which are not genuine the auctioneers are to have the right to erase such marks before delivering to the buyer.





Glendinning

9/3/26

STY. MU. 3

# CATALOGUE.

---

## FIRST DAY'S SALE.

---

MONDAY, MARCH 8th, 1926,

AT 1.30 P.M. PRECISELY.

---

Lt. Col. J. B. Gaskell Collection.

---

### Old Oriental China.

#### Blue and White.

LOT

- |   |  |    |
|---|--|----|
| 1 | A 10in. bulbous vase with short neck, figure decoration  | 1  |
| 2 | Six small cups, five saucers, two plates, and two small vases, various decorations   | 15 |
| 3 | A 21in. circular dish, decorated peonies, diaper border  | 1  |
| 4 | Four flat-shaped saucers; and a small slender vase, <i>Kien Lung</i>   | 5  |
| 5 | The lower half of a beaker, 9in. high, with under-glaze decoration of peonies, and with circular panels of dragons, <i>Khang Hsi</i> | 1  |
| 6 | A somewhat similar piece, diaper background with shaped panels of figures, <i>Khang Hsi</i>  | 1  |
| 7 | A 10in. similar vase, decorated rocks and firs, <i>Khang Hsi</i>   | 1  |
| 8 | An 11in. similar vase, figures and palms, <i>Khang Hsi</i>   | 1  |
| 9 | A 19½in. circular deep dish, decorated utensils and flowers, <i>Ming</i>   | 1  |



## LOT

10	A 12in. pear-shaped wide-mouth vase, prunus, <i>Khang Hsi</i>	1
11	An 8in. ginger jar, prunus on ice crackle ground, <i>double ring mark</i>	1
12	A similar jar with utensils in lobed panels	1
13	A 9in. circular squat-shaped vase, cover with brass knob, drilled for attaching handles, decorated peonies	1
14	A 13½in. deep dish, mounted warriors in panels, <i>six figure mark in circles</i> ; and a 14in. ditto, conventional leaf, both A.F.	2
15	A 6in. cylindrical vase and cover, flowers in panels, and a 5½in. bulbous vase with long neck, both <i>Khang Hsi</i>	2
16	A 9½in. bulbous bottle, figure decoration (A.F.), a 6in. pear-shaped vase, peonies, and a small cylindrical bottle	3
17	A 7in. cylindrical wide-mouth vase, figures in garden, <i>Yung Ching</i> ; a 7½in. bottle, decorated circles design, <i>Khang Hsi</i> , <i>six figure mark</i>	2
18	Three miniature vases, large lisen, two with jade mark	3
19	A pair of small gourd vases, figures and flowers, and a small pair jars with covers (A.F.)	4
20	A small teapot, decorated flowers in panels; another with utensils, <i>Khang Hsi</i>	2
21	A 17½in. cylindrical vase with wide mouth, figures and palms, <i>Ming</i>	1
22	A 17½in. similar vase, palms, peonies, etc., <i>Ming</i>	1
23	A 17in. beaker, figures in garden, <i>stone mark in circles</i>	1
24	A 18in. beaker with trumpet mouth, figures in panels, <i>double ring mark</i>	1
25	A 19in. beaker, figures in garden (A.F.), <i>leaf mark in circles</i>	1
26	A 19½in. similar vase, <i>six figure mark in circles</i>	1
27	A pair of 18in. vases with trumpet-shaped neck, diaper background with figures in shaped panels, <i>double ring mark</i> (Plate I.)	2
28	A 10in. sugar jar, decorated feng birds and peonies, <i>double ring mark</i>	1

## Lot

- |    |   |    |
|----|---|----|
| 29 | A 20in. slender vase and cover, flowers and rocks, etc., in panels, <i>Khang Hsi flower mark</i>  | 1  |
| 30 | A pair of 12in. square tea caddies with tops, ladies and flowers in panels, one piece with <i>jade mark</i> and the other with curious figure mark (Plate I.)               | 2  |
| 31 | A pair of 9in. ginger jars, prunus and ice crackle ground with panels of kylins, <i>Khang Hsi</i> (Plate I.)  | 2  |
| 32 | A 13in. sugar jar and cover, prunus decoration, <i>double ring mark, Khang Hsi</i>  | 2  |
| 33 | A pair of 11in. long neck bottles, utensils and flowers in panels, fine colour, <i>Khang Hsi</i> (Plate I.)   | 2  |
| 34 | A pair of 10½in. long neck bottles, utensils, figures, etc., in panels, <i>Khang Hsi</i> (Plate I.)   | 2  |
| 35 | An 8½in. ginger jar, kylins on clouds, <i>double ring mark, Khang Hsi</i>   | 1  |
| 36 | A 9in. ginger jar, figures and palms, <i>Khang Hsi</i>  | 1  |
| 37 | An 11½in. sugar jar, ladies at play, <i>double ring mark, Khang Hsi</i>   | 1  |
| 38 | A 6in. ginger jar, figures and palms, etc., <i>double ring mark, Khang Hsi</i>  | 1  |
| 39 | A pair of 19in. vases with wide high necks, marine view from house and garden   | 2  |
| 40 | A 13in. pear-shaped vase, ice glaze ground with prunus, <i>Khang Hsi</i>  | 1  |
| 41 | An 11in. bulbous vase, flowers and floral pennants, <i>stone mark, Khang Hsi</i>  | 1  |
| 42 | A 14in. bulbous vase, ice glaze ground with prunus, <i>double ring mark, Khang Hsi</i>  | 1  |
| 43 | A 13½in. sugar jar and cover, feng birds and peonies, <i>Ming</i>   | 1  |
| 44 | A 13in. pear-shaped vase, prunus decoration and with a rim of Jui heads around neck, <i>Khang Hsi</i>   | 1  |
| 45 | An 8½in. ribbed bowl, interior decoration basket of flowers, exterior flowers in panels, <i>flower mark</i>   | 1  |
| 46 | Six cups (one A.F.), figures and flowers in panels, <i>jade mark</i> ; four cups, scalloped border, figure decoration, <i>seal mark in two rings</i> ; all <i>Khang Hsi</i> | 10 |



## LOT

- |    |   |    |
|----|---|----|
| 47 | Five small cups and saucers, various decorations and marks  | 5  |
| 48 | A pair of 5½in. shallow bowls, children at play, <i>six figure mark in two circles</i> ; and four smaller bowls with <i>seal mark</i> | 6  |
| 49 | An 8¼in. fluted bowl, figures and flowers, <i>six figure Khang Hsi mark</i>   | 1  |
| 50 | A pair of 11in. slender vases and tops, animals in irregularly shaped panels and surround of peonies                                  | 2  |
| 51 | A 9in. powder blue bottle-shaped vase, utensils, flowers and landscape in shaped panels, lip slightly faulty (see Photo 5)            | 1  |
| 52 | A pair of 7in. wine vessels, heart-shaped panels of flowers, diaper background, fine colour   | 2  |
| 53 | A set of five (two beakers and three vases) 9½in. vases, figures, etc., in shaped panels  | 5  |
| 54 | A set of five (two beakers and three vases) 10in. vases, landscape and flowers in panels, <i>Khang Hsi</i>                            | 5  |
| 55 | A pair of 9½in. pear-shaped vases, floral design in panels with diaper surround, <i>Khang Hsi</i>                                     | 2  |
| 56 | A pair of 10in. beakers en suite with previous lot  | 2  |
| 57 | A 6in. bowl, landscape decoration, <i>stone mark in rings, Khang Hsi</i> ; and two cups and two saucers                               | 5  |
| 58 | Two miniature teapots, two small plates, six cups and two saucers   | 12 |
| 59 | Three miniature vases, large lisen decoration, and two small beakers (one faulty)   | 5  |
| 60 | A miniature teapot, <i>leaf mark</i> , two cups and four saucers, various designs   | 7  |
| 61 | A 10½in. plate, large lisen decoration, <i>Khang Hsi six figure mark in rings</i>   | 1  |
| 62 | A 10in. plate, ladies and children in garden, <i>mark peonies in circular form, Khang Hsi</i>   | 1  |
| 63 | A pair of 8¼in. fluted lotus saucers, dragons and flowers, <i>stone mark, Khang Hsi</i>   | 2  |
| 64 | A 14in. plate, centre decorated ladies and children under garden arch, and two smaller plates and a pair with basket decoration       | 5  |
| 65 | Two 8in. plates, ladies in garden, <i>six figure mark in rings, Khang Hsi</i>   | 2  |

## LOT

66	A set of three 8in. plates, ladies in garden, <i>double fish mark, Khang Hsi</i>	3
67	Three 8½in. plates, various designs and marks	3
68	A 10½in. dish, floral decoration; and two 7½in. saucers with <i>six figure Khang Hsi mark in circles</i>	3
69	A 13in. dish, peony decoration, <i>six figure Ming mark in circles</i>	1
70	A 13½in. deep dish, ladies in garden, <i>six figure mark in circles, Khang Hsi</i>	1

## Polychromes.

71	A pair of 8in. chamber candlesticks, octagonal bases, floral design in colours	2
72	A pair of 11in. circular oblate food boxes, floral design in colours, <i>seal mark</i>	2
73	A 13in. sugar jar, dragon and clouds in colours, <i>Ming</i>	1
74	A pair of 11in. <i>Ming</i> boys	
75	An old pair of 14in. three-colour Dogs of Foh	2
76	A 9½in. short neck robin's egg vase with wide mouth, <i>seal mark</i>	1
77	A pair of 9in. bottles, floral design with raised dragons, <i>Kien Lung</i>	2
78	A 10½in. <i>famille verte</i> vase, slender neck with trumpet lip, lady and children in garden	1
79	A 7in. three-colour <i>Ming</i> ginger jar, peonies in panels	1
80	A pair of old 8in. peacocks on rocks	2
81	A pair of old 6½in. three-colour Dogs of Foh	2
82	Two 6in. three-colour ginger jars, peonies, etc., <i>Ming</i>	2
83	A pair of 8in. octagonal jardinières with handles, flowers in colours and gilt	2
84	A seated figure of Putai holding ornaments and dressed in coat of many colours	1
85	A square 9in. vase, decorated with agricultural and other views, <i>Kien Lung</i> ; and three small vases	4
86	A 9in. figure of a priest and a 10½in. figure of a dancer	2



## LOT

- |     |  |    |
|-----|--|----|
| 87  | A 6in. dull powder blue ribbed ginger jar, with under-glaze decoration, feng birds, etc., in circular panels, <i>Cheng Wa mark</i>   | 1  |
| 88  | A 6½in. similar ginger jar   | 1  |
| 89  | A pair of 14in. dishes, panel decoration; ladies in garden, in rouge de fer, blue and gold   | 2  |
| 90  | An 11in. seated figure of a woman, with moving head and hands  | 1  |
| 91  | A pair of 7in. <i>famille rose</i> hookah bowls, one A.F.  | 2  |
| 92  | A pair of 9½in. dishes, utensils and flowers, <i>Kien Lung</i>   | 2  |
| 93  | A pair of 9in. Imari plates and a pair of armorial plates  | 4  |
| 93  | A set of five 9in. famille rose deep plates, figures and flowers   | 5  |
| 94  | A set of four saucers, decorated figures and trees in blue, outside rim in turquoise blue, two small bowls, and six small saucers with dragons in green on coffee coloured ground  | 12 |
| 95  | A 5½in. tiger ware bowl and a small green lotus leaf dish with standing figure in centre   | 2  |
| 96  | A set of six small cups, dragons in rouge de fer; four small cups, powder blue with gilt decoration; six small cups, figure decorations; and seven others and three saucers  | 27 |
| 97  | A set of five fluted cups, prunus flowers in rouge de fer and gold and decorated blue bands, <i>leaf mark</i>  | 5  |
| 98  | A pair of cups and saucers, blue diaper ground with famille verte panels, <i>double ring mark</i>  | 2  |
| 99  | Two small bowls, famille verte decoration, dragons, etc., <i>six figure mark in rings</i>  | 2  |
| 100 | A small seated figure of Kwan Ti and two figures on horses   | 3  |
| 101 | Small octagonal famille rose teapot, lotus flowers in panels   | 1  |
| 102 | <b>A very remarkable Pottery Incense Burner of the Ming Period</b> , shaped as a reposing Dog of Foh. This piece was originally in the possession of the Marquis Maeda, Governor of the Province of Kaga; the Japanese certificate states that on the return of the second Korean Expedition of 1597-1598, this incense-burner was handed over to the Shogun Taiko Hideyoshi by Kato Kiyomasa, with the remainder of the loot secured by his troops. The Taiko presented it to Maeda Toshiiye, together with a stone |    |

## LOT

lantern affecting the shape of a five-storied pagoda, and both were kept by the Maeda family during the Tokugawa period, i.e., until 1868, when, all the nobles having handed over to the Emperor their landed estates, the collection of the Maeda family was dispersed, with the exception of the stone lantern, which still remains standing in the public park of Kanazawa (Kaga), once the garden of the Maeda residence. This incense burner was bought by a dilettante in Kanazawa; the certificate is signed *Shiba no Choken*. The piece shows a beautiful green glaze where the Chinese gold lacquer with which it was once entirely covered, has been rubbed (Illus. Glendining Catalogue, May 23/24, 1912)

		1
102A	A pair of 24in. famille verte seated figures of Guardians	2
102B	A small famille rose teapot, cockerels and flowers and raised vine base	1
103	A small famille rose teapot, raised floral decoration	1
104	Another small famille rose teapot, raised lotus decoration	1
104A	Three 16in. octagonal dishes, famille rose decoration	3
104B	A 15in. circular dish, figures, etc., famille verte	1
104C	A 15in. circular dish, Imari decoration	1

### Self Colours.

105	A 15in. long amber shishi-shaped tile	1
106	A pair of 10in. turquoise bottles	2
107	A small green vase and a blue ditto	2
108	A pair of 10in. old mazarine blue ginger jars with covers	2

### Japanese Porcelain.

109	Twenty-five small sake cups, various designs and factories	25
110	A 6in. bulbous silvered vase, decorated various ladies, signed <i>Kinkozan</i>	1
111	A 9in. dark blue vase, gold phoenix brocade, panels containing painted and lacquered figures, signed <i>Kinkozan</i>	1
112	Twenty-five sake cups, various designs and factories	25



Lot		
113	Chaire (tea caddy), thin grey glaze, slightly crackled, decorated chrysanthemums in colours, <i>Banko ware</i> (R.C. 30)	1
114	Ditto, thick vitreous yellow and green glaze, forming blue tears, <i>Oribe ware</i> (R.C. 27)	1
115	Ditto, trilobate, thin flesh colour glaze, decorated in panel with the Noji no Tamagawa design, signed <i>Do</i> , attributed to 1st Dohachi of Kyoto (R.C. 26)	1
116	Ditto, having dark brown glaze on shoulders, flowing on to cream crackled glaze, <i>old Satsuma</i>	1
117	Twenty-five small sake cups, various designs and factories	25
118	A 5in. shallow cream bowl, with grey chrysanthemoid design, <i>Mishima (Yatsuhiro) ware</i> (R.C. 59)	1
119	A 7¼in. bulbous vase, decorated diapers, and with a daimyo procession, landscape, etc., <i>seal Matsuki Hozan</i>	1
120	An old Kaga teapot, pine and plum blossom design	1
121	A 4in. four-sided cream vase and cover, gold and black landscape, signed <i>Ninsei</i> ; Soma tea bowl	2
122	A 7in. octagonal Satsuma vase and cover, four sides perforated net diaper, the others decorated birds, flowers, figures, etc., signed <i>Kioto Riozan, seal Ho</i>	1
123	A similar 7¼in. basket vase, same technique, the vase being diaper, the handle reaching to the base and decorated picnic scene, signed <i>Seal of Rio(zan), Ho</i>	1
124	An old 11¼ Imari three-sided blue and white vase, decorated sages, finely inlaid and chased metal neck	1
125	A 7½in. chrysanthemoid Satsuma bowl, conventional designs on each petal, signed <i>Masanobu of Satsuma</i>	1
126	Small Satsuma bucket, figures; ditto tea bowl, decorated winter landscape; ditto kogo, figures and landscape	3
127	A 10in. heavy black glaze vase, sages in colours	1
128	A 7½in. Kinkozan vase, figures; Kutani tobacco box; 7in. Awata vase, flowers; 5in. old Satsuma vase, kiku	4
129	Twenty-five small sake cups, various designs and factories	25
130	Sixteen ditto cups and seven other pieces, various	23

## LOT

- 131 An old 10in. squat circular box and cover, decorated numerous figures, trees, etc., signed *Kutani* 1
- 132 An 8in. blue and white vase, boy on ox; two Kutani plates; two 6in. Kyoto boys; ditto, plate, dragon 6

## Hardstones

- 133 An 8½in. malachite figure of Hsi Wang Mu 1
- 134 A 4¾in. x 4½in. wide double vase in dark green jade, pine peach and fungus carving 1
- 135 A 6in. white jade group of Shou Lao with peach, boy and stag 1
- 136 A 3½in. green jade tripod incense-burner, carved dragons, dragon head and loose ring handles, dog on cover 1
- 137 A 2in. x 3in. amethyst quartz Dog of Foh 1
- 138 A fine pair of 5½in. compound amber vases and covers, carved deer, monkeys, fruit trees, etc., loose ring handles 2
- 139 A pair of 7in. wide-lipped green jade beakers, palm leaf carving, with rosettes in relief (Plate III.) 2
- 140 A 4¼in. malachite figure of a seated lohan with fly-whisk 1
- 141 An 1¾in. x 3½in. opaque yellow-brown amber water vessel, carved fungus and flowers 1
- 142 A 4¼in x 7¾in. white jade triangular-shaped ornament, finely carved with a temple in mountains, deer and trees on reverse 1
- 143 A 4¾in. grey agate incense-burner, Dog of Foh and loose ring handles, Dog of Foh cover 1
- 144 An old 5½in. dark green jade vase and cover, loose ring handles on vase and on cover, the former carved conventional lotus 1
- 145 A 4¼in. Dog of Foh seal in crystal; another slightly smaller 2
- 146 An old 7in. dark green jade fish vase, dragon fish jumping from waves (Plate III.) 1
- 147 A 4½in. malachite seated figure of Chu Tan Yu 1
- 148 A 6in. greenish white jade vase, shaped as magnolia flower, chrysanthemum and peach bloom at the sides (Plate III.) 1



## LOT

149	A 3½in. turquoise figure of How Sien-song	1
150	A 3in. x 4¾in. white jade ornament, duck with lotus plant held in its bill	1
151	A pair of 8½in. greenish jade pricket candlesticks, chrysanthemoid carving (Plate III.)	1
152	A 6in x 8¼in. lacquered plaque, decorated wolf on a chariot driving two cockerels, inlaid in pagodite, lapis lazuli and carnelian	1
153	A 3¾in. turquoise matrix tripod incense-burner, loose ring handles, kilin cover	1
154	A 6in. x 8in. agate figure of a Dog of Foh (Plate II.)	1
155	A 4in. malachite group of How Sien-song	1
156	A 2¼in. circular green jade box and cover, carved phoenix and dragon	1
157	A 1½in. x 2¾in. light green jade figure of a horse about to graze	1
158	A similar figure to the last	1
159	A 3 in. clear crystal sphere on carved wood stand	1
160	A 7in. x 7½in. light grey and brown jade duck (Plate II.)	1
161	A pair of 4¾in. compound amber figures, sage with stag	2
162	Small white jade figure, seated man; ditto, three boys	2
163	A 5¾in. dark green jade vase and cover, carved dragons, loose ring handles	1
164	A 5in. light green jade ditto, tao tieh carving	1
165	An old 3½in. x 8½in. dark green jade group of a cat with a dove in its mouth (Plate II.)	1
166	A pair of 1¾in. flower-shaped agate bowls, lotus handles	2
167	A 7in. x 8¾in. lapis lazuli plaque, carved Shou Lao, and two other sages playing chess in the mountains. Stand	1
168	A pair of 5¼in. x 9in. white jade plaques, well carved with sages in mountains, houses, etc., in well carved wood stands	2
169	A 5in. incense-burner in green jade, carved conventional flowers and rosettes in relief, chrysanthemum and loose ring handles (Plate II.)	1

## LOT

170	A 5in. white jade vase, carved dragon in high relief	1
171	A 3½in. sage-green jade seated sage with goose	1
172	A 3in. x 2in. agate box and cover, dendritic inlay, carved crabs; small labradite bowl	2
173	An old peach-shaped jade pendant, carved bat	1
174	An agate ditto, carved sages; aquamarine ditto, seal shape	2
175	A mother-o'-pearl mandarin necklace; small wood ditto	2
176	Two carved white jade hair ornaments; ditto, circular stand; malachite paper weight	4
177	A small ornament, shaped as peach tree, in coral, rose quartz, green jade and agate, in case	1
178	A small white jade plaque, shaped as a goat; 2½in. agate figure, How Sien-song	2

## Chinese Cloisonne, Etc.

179	A pair of 18in. bronze vases, rope decoration, forming twelve panels, these are filled with cloisonne diaper designs	2
180	A 22in. cylindrical wine ewer, decorated dragons in four en- circling panels, dragon handle, <i>Kien Lung</i>	1
181	A pair of 7in. Canton teapots, flowers on lilac ground, <i>Kien Lung</i>	2
182	A similar pair, birds and flowers in white panels on blue surround (one A.F.), <i>Kien Lung</i>	2
183	A similar pair, landscapes on white panels, floral surround on yellow, <i>Kien Lung</i>	2
184	A pair of 4in. x 6in. Canton jardinières, flowers on yellow ground	2
185	A pair of Canton cups and saucers, Dutch decoration, lady and mounted men, landscape, etc., <i>Kien Lung</i>	4
186	Four 4½in. circular chrysanthemoid trays, flowers on yellow, <i>Kien Lung</i>	4
187	Two square ditto, foxes, grapes and flowers on lilac; pair, kilins, etc., on mauve, <i>Kien Lung</i>	4
188	A pair of 6in. white Canton saucers, decorated flower vases, incense-burners, etc., <i>Kien Lung</i>	2



## LOT

- |     |   |   |
|-----|---|---|
| 189 | A 6in. hexagonal Canton vase, floral panels on white; two cups, flowers on yellow   | 3 |
| 190 | Two Canton bowls and covers, flowers on yellow  | 2 |
| 191 | A 12½in. deep dish, decorated three lohans; 17in. dish, pomegranate and grape design  | 2 |
| 192 | An 18in. jui, decorated conventional lotus and key pattern, the three plaques being brass, finely chased with dragons. Pair of 1½in. circular stands, bats and lotus (ex. Prince Kung-pu-wei of Pekin Collection). <i>Khang Hsi</i> | 3 |
| 193 | A 5in. circular cloisonne clock (works by Japy), ormolu mount, hanging in an ormolu and cloisonne gateway, with two Dogs of Foh at base   | 1 |
| 194 | A pair of 6in. pricket candlesticks, conventional design of light blue, and a squat taper (joss stick) holder, <i>Khang Hsi</i>   | 3 |
| 195 | A pair of 15in. white cranes, the wings in various colours  | 2 |
| 196 | A 9in. x 16in. long peacock incense-burner, <i>Khang Hsi</i> (Plate IV.)  | 1 |
| 197 | A 7½in. mandarin duck incense-burner, light blue and green, on a 2in. oval base, conventional lotus, <i>Khang Hsi</i> (Plate V.)  | 1 |
| 198 | A fine old 9in. x 9in. Persian brass horse, chased skull collar, etc. (Plate V.)  | 1 |
| 199 | A pair of 5¼in. quail incense-burners, white with blue, black, yellow and green on wings, <i>Kien Lung</i>  | 2 |
| 200 | A pair of old 6in. circular boxes and covers, raised cloisonne flowers, inlaid jade plaque  | 2 |
| 201 | A pair of 13¼in. wide-lipped beaker-shaped vases, conventional lotus on turquoise blue, <i>Kien Lung</i>  | 2 |
| 202 | A fine pair of 12in. x 15½in. kilin incense-burners, dark blue and turquoise scales, red flamiform appendages, <i>Khang Hsi</i> (Plate IV.)   | 2 |
| 203 | A pair of 7in. red storks; 5½in. ditto quail, wings in various coloured cloisonne   | 3 |
| 204 | A pair of 5¼in. white pigeons, wings in turquoise, red, mauve, green and yellow, <i>Qien Lung</i>   | 2 |
| 205 | A pair of 17in. ewers, decorated longevity character, bats, and conventional flowers on turquoise blue, <i>Khang Hsi</i> (Plate V.)   | 2 |

## LOT

- |     |  |   |
|-----|--|---|
| 206 | A pair of 12½in. pilgrim-shaped vases, decorated conventional lotus and chrysanthemum on deep turquoise blue, <i>Khang Hsi</i> | 2 |
| 207 | A pair of 40in. gourd-shaped vases and covers, decorated gourd plant   | 2 |

## Chinese Glass, Etc.

- |     |   |   |
|-----|---|---|
| 208 | An 8in. yellow cameo vase, flowers in colours, <i>Kien Lung mark</i>                            | 1 |
| 209 | A 4½in. squat yellow tripod incense-burner, sage and landscape in relief, <i>Kien Lung mark</i> | 1 |
| 210 | A pair of 5½in. hexagonal fluted yellow vases, <i>Kien Lung mark</i>                            | 2 |
| 211 | A 6½in. reddish soapstone Dog of Foh, seal ornament   | 1 |
| 212 | An old 5in. soapstone seated fisherman with basket  | 1 |
| 213 | An old 4½in. ditto group of Shou Lao on his stag  | 1 |

## Chinese Furniture, Etc.

- |     |   |   |
|-----|---|---|
| 214 | A pair of 23½in. circular top pedestals, carved leaves, etc., red marble tops                       | 2 |
| 215 | A pair of 17in. square top ditto, carved gourds, red marble tops                                    | 2 |
| 216 | A 32in. ditto with under-shelf, carved dragons, etc., eight-lobed top with red marble inlaid        | 1 |
| 217 | A 19in. ditto, under-shelf, carved plum blossom, red marble and four-lobed top                      | 1 |
| 218 | A 21in. barrel-shaped ditto, carved plum blossom, red marble top                                    | 1 |
| 219 | A 30in. circular top ditto, under-shelf, red marble top   | 1 |
| 220 | A pair of 10½in. circular top ditto, red marble top   | 2 |
| 221 | A 32in. ditto, carved flowers and masks, under-shelf, 20in. lobed top, inlaid red marble            | 1 |
| 222 | A 4ft. ditto, carved elephant heads, vines and claw feet, under-shelf, lobed top, inlaid red marble | 1 |
| 223 | A 25½in. square top table, with under-shelf, inlaid figures and landscape in ivory                  | 1 |



LOT		
224	An 11in. square top ditto, inlaid war scene	1
225	A 12in. circular top ditto, inlaid sages, etc.	1
226	A 33in. Indian brass table, top engraved various kings, queens, etc.	1
227	A 28in. x 21in. x 17in. cloisonne seat, decorated birds, flowers, dragons and diapers	1
228	<b>A very fine Solid Mahogany Cabinet,</b> 7ft. 3in. wide by 6ft. 6in. high, the top half in three divisions with double doors enclosing display shelves for netsuke, etc., the three bottom divisions fitted forty drawers for tsuba, etc., eighteen drawers 1 $\frac{1}{4}$ in. deep, and fourteen other deeper drawers, four small pull-out shelves. <i>A fine collector's cabinet</i>	1
229	Two 3ft. 10in. x 3ft. 3in. high mahogany wall cases, glazed doors, with shelves	2
230	A 14 $\frac{1}{2}$ in. brown lacquer stand, decorated landscape	1

END OF FIRST DAY'S SALE.

## SECOND DAY'S SALE.

TUESDAY, MARCH 9th, 1926,

AT 1.30 P.M. PRECISELY.

### Japanese Ivory Carvings.

LOT		
231'	A 14½in. long group of a peasant pulling a sleigh containing bales of vegetables, with child pushing in the rear and baby seated on bale, signed <i>Masao</i>	1
232	A pair of 10½in. tusks, carved in deep relief and undercut with numerous legendry and mythological figures, trees, etc., signed <i>Hakumin</i>	2
233	A 6in. group of a mask seller with large umbrella and a boy, signed <i>Ogawa Seishu</i>	1
234	An exceptionally fine 11in. group of the Hagoromo Angel and kneeling peasant and boy (Plate VI.)	1
235	An 8in. carving of Kwanyu, partly coloured	1
236	A 6½in. group of Shoki and two crouching oni, signed <i>Muneharu</i>	1
237	A 4¾in. circular group of three warriors fighting	1
238	A well executed model of an articulated crab	1
239	A 16in. slender figure of a Chinese lady with flower basket and fly-whisk, partly coloured	1
240	A 7in. group of Benten looking into a mirror, and boy holding a basket of peaches, signed <i>Toshimitsu</i> . A fine piece	1
241	A 9¼in. tusk, deeply carved and coloured with a lady and numerous attendants	1 16/-/-
242	A very fine 9½in. carving of a sage with staff, holding a chrysanthemum branch, and boy trying to reach same, signed <i>Kawai Keimin</i>	1 58/-/-



LOT			
243	Another fine 9½ in. carving of Gama Sennin and basket containing finger citrons, signed <i>Ryusui</i>	1	75/-
244	A 3 in. ball, exterior carved waves, rocks, and minogame; the interior finely carved landscape, and elephants, etc. (R.C. 32)	1	137/-
245	A 4¾ in. figure of a painter resting on portion of a screen, signed <i>Riokai</i>	1	61/-
246	An 8¾ in. silver and ivory vase and cover, base and top silver filigree, and cloisonne floral inlay; phoenix handles; the ivory sides decorated in shibayama birds and flowers	1	12/10/-
247	Two finely modelled and coloured oranges	2	3/10/-
248	An exceptionally fine 11½ in. figure of a lady and a small boy holding a book, signed <i>Nobuyuki no Miojin, Hanayuki</i>	1	42/-
249	A 6 in. coloured model of a banana	1	38/-
250	A 3 in. x 5 in. group of a seated peasant holding flute and reading book, signed <i>Ikkosai Seishu</i>	1	61/-
251	An exceedingly fine 8½ in. group of a mother holding aloof a doll and boy at her feet, signed <i>Shingyoku</i> (Plate VII.)	1	65/-
252	A 2¾ in. box and cover, inlaid bee, carved bamboo	1	31/-
253	Two ivory sake cups with lacquered figures of warriors, signed <i>Shojusai</i>	2	5/10/-
254	An old 4 in. wood carving of a workman asleep by his tool chest, signed <i>Ikkosai Kwansei</i>	1	2/15/-
255	A very fine 9½ in. group of a hunter with bow and arrow about to kill a wounded eagle with a dagger, signed <i>Meigyoku</i> (Illus. Tomkinson Cat.)	1	50/-
256	A 4½ in. x 5 in. old Chinese group of Putai and How Sien-song, partly coloured	1	9/-
257	A 3 in. x 4 in. group of peasants washing linen and pounding same in mortar, signed <i>Mitsumune</i>	1	
258	A small well-carved figure of an eagle perched on wooden tree trunk	1	5/-
259	A 2½ in. x 3½ in. model of a skull	1	3/6mo
260	A 4 in. squat group of a seated sage, whose hat and book is blown away by the wind, signed <i>Shinzan</i>	1	5/10/-
261	A 3¾ in. x 3¾ in. group of Tadamori capturing the oil thief	1	5/-



## LOT

262	A 6½in. group of numerous oni climbing up an ishidoro (stone lantern)	1	11/-
263	A well modelled and coloured apple	1	35/-
264	A 4in. group of two skeletons, one dancing the other playing a samisen	1	30/-
265	A 4in. copy of a tobacco pouch, finely lacquered with three fans	1	31/-
266	A 2½in. x 4½in. carved wood figure of Daruma stretching, signed <i>Tatsumin</i>	1	31/-
267	A 3¾in. carved wood seated Rakan, signed <i>Masayuki</i>	1	
268	A finely carved 2¾in. group of Shoki putting the lid on a barrel full of oni, signed <i>Gyokushin</i> (Plate VII.)	1	9/10/-
269	A well modelled group of two radishes with their leaves	1	2/5/-
270	A small coloured group of two tomatoes; and a single ditto, signed <i>Hozan</i>	2	35/-
271	An 8¾in. old coloured figure of a Chinese lady holding a jui	1	21/-
272	A finely carved 9in. group of Ashinaga and Tenaga, Ashinaga with snake in fishing net, signed <i>Komin</i>	1	12/10/-
273	A curious 4¼in. group of mounted warriors	1	3/12/6
8. 274	A 2in. x 3in. group of five blind men fighting	1	9/-
275	A 4½in. group of Handaka Sonja, signed <i>Muchu</i>	1	6/15/-
276	A 3½in. x 3in. group of a kneeling man with vegetable basket, frightened by a frog, signed <i>Munesada</i>	1	5/-
277	An 8¼in. (long) old Chinese carving of a reposing lady with fan	1	19/-
278	A 5in. group of an umpire intervening between two quarter-stick combatants, signed <i>Joso</i>	1	19/-
279	An 8½in. Chinese figure of a lady, partly coloured, the robe inlaid soapstone	1	15/-
280	A 6in. group of two ball jugglers performing, signed <i>Ogawa Shizunao</i>	1	7/-
281	A 3in. circular Chinese box, perforated and carved in high relief with fifteen sages and flowers	1	4/10/-
282	A finely carved 3in. group of a gardener and three children assisting him, signed <i>Gyokushin</i> (Plate VII.)	1	10/-



## LOT

- 283 A 12½ in. group of a man making a fishing net, which is suspended on an oar, signed *Tadayoshi*
- 284 A fine 12 in. model of a skeleton (Plate VI.)
- 285 A curious 4 in. group of various warriors
- 286 A 4½ in. group of three monkeys, one being stung by a large bee, signed *Munekazu*
- 287 A 5½ in. coloured model of a banana
- 288 A 3 in. x 3½ in. group of man with horse washing daikon in a stream; another man working a treadmill, signed *Seiko*
- 289 A 9½ in. x 8 in. model of a house, in which one sees the occupants in various occupations. On wood stand
- 290 An old 8 in. solid group of Jurojin and two cranes, signed *Shinkosai Masatoshi*
- 291 A 3¼ in. group, Daikoku and Ebisu as dancers
- 292 A finely carved 3½ in. group of a rakan with water pouring from his bowl, seated on a rock (Plate VII.)
- 293 A 3¾ in. group of a sage seated on an elephant, signed *Munenobu*
- 294 A 4¼ in. group of Benten and Tokimasa with bow and arrow, signed *Norishige*
- 295 A 2¾ in. x 3 in. skull, with moveable lower jaw, signed *Asahi Gyokuzan*
- 296 A 5¼ in. group of Fukurokujiu with vase of peonies
- 297 A 3¼ in. group, some onis lifting up the bell of Miidera, others on the bell, signed *Gyokushu*
- 298 A 2 in. ball, carved all over with mice, signed *Masamitsu*
- 299 A 4¾ in. standing figure of *Kwanyu*
- 300 A 3½ in. group of Gama Sennin attacked by large frogs
- 301 A 2¼ in. x 2¾ in. group of Yorimasa and his attendant Ino Hayata killing the Nuye, signed *Tadamitsu* (Plate VII.)
- 302 An old 7½ in. x 5 in. Chinese finger-citron shaped tray, carved plum blossom, slightly coloured
- 303 A 3 in. long figure of a toad in bone
- 304 A 2 in. x 3¼ in. Chinese vanity case, perforated diaper and carved flowers

1 87/-

1

1 3/10/-

1 87/-

1 30/-

1 6/-

1 11/15/-

1 9/-

1 2/15/-

1 8/-

1 87/-

1 6/-

1 5/-

1 6/-

1 8/-

1 79/-

1 4/5/-

1 6/-

1 7/-

1 3/15/-

1 2/5/-

1 55/-

at 54 A Wigmore St.

19/10/-

30.



## LOT

- |     |  |   |        |
|-----|--|---|--------|
| 305 | A 3½in. figure of Gama Sennin, frog on his shoulder  | 1 | 3/5/-  |
| 306 | A 2in. x 5in. group of numerous fishes   | 1 | 3/5/-  |
| 307 | A 3½in. x 3¼in. comic group of the Shichifukujin in a stream, signed <i>Kosensai Nagamitsu</i>   | 1 | 10/5/- |
| 308 | A 2¾in. x 3in. group, man showing tengu in bowl to an old man and two ladies, signed (on gold plaque) <i>Ono Shomin</i>  | 1 | 6/-    |
| 309 | A 2¼in. x 3½in. group, two seated dancers, <i>Shishimai</i> and another  | 1 | 5/-    |
| 310 | A 4¼in. brown coloured figure of <i>Jurojin</i>  | 1 | 2/5/-  |
| 311 | A 3¼in. group of three men cleaning a huge statue of a nio, signed <i>Kosen</i>  | 1 | 5/-    |
| 312 | A 2¾in. group of <i>Yoshitsune</i> fighting with four tengu  | 1 | 4/10/- |
| 313 | An old 2¼in. figure of <i>Jurojin</i> , seated on (wooden) rocks   | 1 | 6/-    |
| 314 | A 2in. x 3in. group of men working a threshing machine, signed <i>Muneoki</i>  | 1 | 3/5/-  |
| 315 | A 4½in. group, peasant carrying two baskets on a pole, the rear one overweighted by a boy, signed <i>Ikkosai Seikaku</i>   | 1 | 5/-    |
| 316 | A 2½in. group, numerous blind men on and around an elephant, signed <i>Shominsai Chikamasa</i>   | 1 | 8/10/- |
| 317 | A 6in. brush pot, deeply carved and coloured, ladies in garden and female orchestra  | 1 | 9/10/- |
| 318 | A well carved 3½in. group of <i>Sojobo</i> and <i>Tengu</i> instructing <i>Yoshitsune</i> , signed <i>Kwanshinsai Masanobu</i>   | 1 |        |
| 319 | A 4in. group of four people of various occupations   | 1 | 5/-    |
| 320 | A 6½in. group of <i>Ashinaga</i> carrying <i>Tenaga</i>  | 1 | 4/10/- |
| 321 | A 4½in. nude reposing Chinese lady, two children and pup   | 1 | 3/5/-  |
| 322 | A 6in. brush pot, deeply carved and coloured with various sages  | 1 | 10/-   |
| 323 | A small coloured model of an apple cut in half   | 1 |        |
| 324 | A 3½in. ornament, carved snake, frog, tortoise, etc., inlaid bee, etc.; gourd vase, 4¼in., ivory top, carved <i>Jurojin</i>  | 2 | 3/6/-  |
| 325 | An exceptionally fine group, 17¼in. high by 17in. long, a hunter carrying a gun, standing on a decayed tree trunk, on which is a vine and rabbit, signed <i>Seishu</i> | 1 | 12/1/- |



## LOT

- |     |  |    |        |
|-----|--|----|--------|
| 326 | A 22in. carved and coloured figure of a Chinese lady holding peonies and a vase  | 1  | 85/-   |
| 327 | A portion of a set of Chinese chessmen, thirteen pieces in all   | 13 | 6/10/- |
| 328 | A 3 $\frac{3}{4}$ in. sphere, pierced and carved figures, trees, etc., containing nine concentric spheres, pierced diapers   | 1  | 5/-    |
| 329 | A 19 $\frac{1}{2}$ in. figure of a Chinese lady with basket of peonies, coloured   | 1  | 80/-   |
| 330 | A paper weight, etched landscape; mirror with pierced and carved ivory back; two brush cases; and two chopstick cases  | 6  | 90/-   |
| 331 | An old 4 $\frac{3}{4}$ in. Chinese lady (slightly A.F.); paper knife, openwork scroll handle with Buddhist figure inside; Chinese book   | 3  | 26/-   |
| 332 | A 4in. sphere pierced and carved figures and landscapes, containing at least sixteen concentric spheres, pierced diapers, hanger a dancing boy, pendant a flower vase. In glass case | 1  | 13/-   |

### A Small Collection of Animals

- |     |   |   |        |
|-----|---|---|--------|
| 334 | A 3 $\frac{1}{2}$ in. long figure of a porcupine, signed <i>Kwanjia</i>   | 1 | 3/-    |
| 335 | A 6in. long running fox, signed <i>Kwangyoku</i>                          | 1 | 38/-   |
| 336 | A 6 $\frac{1}{2}$ in. long pointer with hare, signed <i>Kwangyoku</i>     | 1 | 2/5/-  |
| 337 | A 2 $\frac{3}{4}$ in. figure of a ram; small ditto (A.F.)                 | 2 | 22/-   |
| 338 | A 3in. long figure of a badger, signed <i>Hirokazu</i>                    | 1 | 20/-   |
| 339 | A 4 $\frac{1}{2}$ in. bison, signed <i>Kwanji</i>                         | 1 | 2/15/- |
| 340 | A 5 $\frac{1}{4}$ in. figure of a sea lion, signed <i>Kwanji</i>          | 1 | 3/-    |
| 341 | A 5 $\frac{1}{4}$ in. figure of an Indian bullock, signed <i>Kwanji</i>   | 1 | 3/-    |
| 342 | A 4 $\frac{1}{2}$ in. long figure of a hippopotamus, signed <i>Kwanji</i> | 1 | 2/15/- |
| 343 | A pair of 3in. figures of rams  | 2 | 3/5/-  |
| 344 | A 3 $\frac{1}{4}$ in. kingfisher on a coloured bone lotus pod             | 1 | 32/-   |
| 345 | A 3 $\frac{1}{4}$ in. hare licking its paw, signed <i>Kofu</i>            | 1 | 4/10/- |
| 346 | A 6in. long squirrel with grapes, signed <i>Hirokazu</i>                  | 1 | 4/-    |
| 347 | A 3in. long-eared owl on a wooden tree stump                              | 1 | 3/15/- |
| 348 | A 4in. x 6in. figure of a stag, signed <i>Hirokazu</i>                    | 1 | 2/15/- |



## LOT

349	A 2½in. x 5in. figure of rhinoceros, signed <i>Itasaka Gyokuyen</i>	1 4/5/-
350	A 3in. x 8¾in. lion on wood stand, signed <i>Gyokuyen</i>	1 4/-
351	A 6¼in. x 4¼in. figure of a stag	1 3/10/-
352	A 2in. x 4¼in. figure of a wolf, signed <i>Kwanri</i>	1 2/-
353	A 7in. figure of a shark, signed <i>Kwanji</i>	1 30/-
354	A 2½in. x 4½in. seated figure of a dog	1 4/-
355	A 3in. x 5½in. figure of a zebra, signed <i>Kazutomo</i>	1 30/-
356	A 3¼in. x 6¾in. group, pigeons on a hoe, signed <i>Minkoku</i>	1 50/-
357	A group of three 3½in. sparrows on wooden tree trunk	1 8/10/-
358	A 5¼in. figure of an ostrich	1 3/10/-
359	A 2¼in. x 3½in. seated monkey, signed <i>Hirokazu</i>	1 30/-
360	A 2¼in. x 6in. figure of an otter, signed <i>Hirokazu</i>	1 2/15/-
361	A 5in. flat group, minogame; 3in. goldfish, signed <i>Kwanji</i>	2 2/-
362	Three small figures, rat, badger, and a kangaroo	3 30/-
363	A 5¼in. (long) figure of a polecat, signed <i>Kwanji</i>	1 30/-
364	A 2½in. x 3¾in. figure of a camel	1 30/-
365	A 4½in. x 8in. figure of a toucan, signed <i>Hirokazu</i>	1 5/-
366	A 7in. group, squirrel descending a tree, signed <i>Kwanshu</i>	1 4/-
12. 367	A 7in. figure of a giraffe, signed <i>Hirokazu</i>	1 2/-
368	A 3½in. long cat, signed <i>Kwangyoku</i> ; and a frog, signed <i>Hirokazu</i>	2
369	A 7in. long figure of a bat, signed <i>Gyokuichi</i>	1
370	A 2½in. x 3¼in. figure of a wolf with bird	1
371	A 6½in. figure of an ostrich, signed <i>Kwanji</i>	1
374	A 4¼in. seated figure of an ostrich, signed <i>Kwanji</i>	1
375	A 7¾in. (long) figure of a long-eared bat, signed <i>Kwanji</i>	1
376	A 2¼in x 8in. figure of an anteater, signed <i>Hirokazu</i>	1
377	A 3½in. x 5½in. figure of an elephant, signed <i>Gyokuo</i>	1
378	A 4in. figure of a monkey, signed <i>Hirokazu</i>	1



## LOT

- |     |  |   |
|-----|--|---|
| 379 | A 2in. x 9 $\frac{1}{4}$ in. group, snake with captured cockerel, signed <i>Ryumei</i> | 1 |
| 380 | A 4 $\frac{3}{4}$ in. cockatoo on decayed tree branch (wood)                           | 1 |
| 381 | A 4 $\frac{1}{4}$ in. x 4 $\frac{1}{2}$ in. figure of a camel, signed <i>Tamakazu</i>  | 1 |
| 382 | A 2 $\frac{1}{2}$ in. x 9in. tiger, signed <i>Gyokuyen</i> , on wood stand             | 1 |
| 383 | A 17in. figure of a crocodile  | 1 |

### Old Chinese Lacquer.

- |     |   |   |
|-----|---|---|
| 384 | A 22in. x 14 $\frac{1}{2}$ in. x 6 $\frac{1}{2}$ in. red lacquer cabinet, carved dragons and waves, with four doors and three drawers, <i>Kien Lung</i> | 1 |
| 385 | An old 11in. five lobed red lacquer box, with panel carved sage in landscape, with a wave surround  | 1 |
| 386 | A pair of 8in. five-lobed three-tiered boxes, carved sages, river, houses, etc., floral patterns on the sides, <i>Kien Lung</i>                         | 2 |
| 387 | A pair of 8 $\frac{1}{2}$ in. red lacquer gourd-shaped vases, well carved, with gourd vine  | 2 |
| 388 | A pair of old 5ins. high by 7 $\frac{1}{2}$ ins. wide, five-lobed red lacquer vases, carved fish, bats, lotus, etc., on diaper base                     | 2 |
| 389 | A 7in. red lacquer gourd-shaped vase, carved landscapes in medallions   | 1 |
| 390 | A 3in. circular red lacquer box, lid carved sages, base carved flowers, on diaper base, <i>Kien Lung</i>  | 1 |
| 391 | A pair of 5in. black lacquer bowls, gold figure design  | 2 |
| 392 | An 11 $\frac{3}{4}$ in. x 7in. x 6 $\frac{1}{4}$ in. red lacquer cabinet, carved sages in garden, house, flowers, etc.                                  | 1 |
| 393 | Two 8in. gilt and coloured figures of two Deva kings  | 2 |
| 394 | A 16in. red lacquer figure of a Chinese noble, <i>Kien Lung</i>   | 1 |
| 395 | A 17 $\frac{1}{2}$ in. ditto figure of a Chinese Emperor, <i>Kien Lung</i>  | 1 |
| 396 | A 6 $\frac{3}{4}$ in. circular box, carved dragons and waves, <i>Kien Lung</i>  | 1 |
| 397 | A 7in. octagonal red lacquer box, carved sage in mountains, waves on sides  | 1 |



- LOT
- 398 An 11½in. red lacquer vase, carved floral panels, diaper base 1
- 399 A double-shaped box, an 8¾in. green lacquer square, carved characters on yellowish base, and a 10in. circular portion, carved character "ju," and jewel bowl, and sages and landscapes on sides, in red lacquer on green and yellowish base. *A fine piece* 1
- 399a A very fine old coromandel cabinet, 3ft. 3ins. by 32½ins. high, the exterior decorated various female figures, kilin, trees, etc.; the interior carved numerous flowers, vases, etc., containing eight drawers. Mounted on a 33in. gilt-carved stand.

## Japanese Lacquer.

- 400 A black lacquer paper box, carved with the Chorio and Kosekiko story 1
- 401 A mirror-black natsume, decorated various coloured flowers in the Mitsuda style, signed *Tetsuzo* 1
- 402 A 3½in. oblong box, a fine example of mokume, showing reds (3); yellows (2); greens (3); (Plate IX.) 1
- 403 An old hirame on black writing box, exterior takamakiye landscape, river, etc., interior Kosekiko and Chorio story on nashiji (R.C., 16) 1
- 404 Fine nashiji writing box, gold takamakiye flowers of autumn on banks of stream, with undulating waves; interior, moonlight sea-shore view, rough waves, with silver shading (R.C., 25) 1
- 405 Black lacquer writing box, decorated stream with gold hiramakiye waves, the banks inlaid pewter, with Sumiyoshi Myojin and boatmen in boat, in mother-o'-pearl, pewter, etc.; the whole of the interior and base with a similar design; Korin style (illus., R.C. 21, plate LXIV.) 1
- 406 A black lacquer writing box, decorated in high relief with a gold and silver shishi, holding a pottery peony in its mouth, and signed *Ritsuo*, interior swallows in lacquer and pottery, mother-o'-pearl plant, etc. 1
- 407 A black lacquer writing box, with gold togidashi diaper, and takamakiye emblems of Longevity; interior mura hirame on black, takamakiye pine and wistaria, stream, etc.; fitting en suite 1



## LOT

- 408 A 7 $\frac{1}{4}$ in. x 4 $\frac{1}{2}$ in. x 4 $\frac{1}{2}$ in. mura hirame on black lacquer box, red, gold and silver togidashi chrysanthemum design, similar design on inner tray 1
- 409 A complete set of implements of the incense game (Jisshu Kobako). The box, 7 $\frac{3}{4}$ in. x 6 $\frac{1}{4}$ in. x 9 $\frac{1}{2}$ in., nashiji with takamakiye landscape, river, bridge, etc., on top and sides, similar design on the other boxes; also contains the scoring board. Also small painted book relating to the Genji game (illus., Plate LXXV., No. 79), (ex. Gurney Coll.); Plate VIII. 1
- 410 Natural wood writing box, carved pine tree and snow, with gold takamakiye eagle on a branch, signed *Shoto*; interior fine hirame on black, gold and silver togidashi mountains, takamakiye sparrows and pine, and silver lacquer snow (ex. Hodgson); (R.C., 24) 1
- 411 Writing box, a unique specimen of guri lacquer; about fifty layers of light and dark indian red, carved as conventionalised clematis blossoms on eddying water, signed *Unkicki*; the stone signed *Tenkaichi Bungo* 1
- 412 Writing box, mura nashiji on black, inlaid in relief with a bugaku helmet in shakudo on gold Kaga inlay, signed inside *Iwama Masayoshi*, interior of lid, a takamakiye sho and case (ex., Lawrence) 1
- 413 A very fine box, 7 $\frac{3}{4}$ in. x 4in. x 6 $\frac{1}{2}$ ins., decorated with books in gold lacquer bearing togidashi decorations, on diapers of gold and aogai on black, interior tray with togidashi fan decorated with the Rokkasen, on net of silver charged with plum blossoms, signed *Yamada Yosan* and *Koma Kwansai* (illus. Hodgson Coll., May, 1912) 1
- 414 A 3 $\frac{3}{4}$ in. x 9in. brown writing box lid decorated silver hake-mono, bearing sumiye kakemono of Kikujido, signed *Sesshu* 1
- 415 A black lacquer small cabinet (kamidai); takamakiye and foil cranes and reeds 1
- 416 A pair of 7 $\frac{1}{4}$ in. brush pots, lacquered and inlaid fowls, bird and cherry blossom on tortoise shell 1
- 417 Two emu eggs, lacquered in relief, dragon and clouds, and lotus and fish 2



## LOT

- |     |   |   |
|-----|---|---|
| 418 | A 3in. box inlaid with cock on gate in Somada style (probably French)   | 1 |
| 419 | A 21½in. model of a koto, and a plain hardwood fan case, inlaid ivory characters  | 2 |
| 420 | An 8½in. x 5½in. mokume tray, two reds, black, green and yellow, carved peony and teapot  | 1 |
| 421 | A 5in. globular kinji vase with silver cover, two silver-rimmed panels, with crab, and various flowers in Shibayana technique, cloisonne bee handles, monkey on cover   | 1 |
| 422 | A nashiji box, with takamakiye leaves, containing the cards of the "Hundred Poets" game   | 1 |
| 423 | Gold poudre on black, kogo, gold takamakiye temple, rocks and pine trees; all the interior and base, gold hiramakiye kiku on hirame (Plate IX.)   | 1 |
| 424 | A 10½in. solid lacquer flower vase in red, black, yellow, blue and green mokume (illus. in colour, R.C., 193)   | 1 |
| 425 | Kogo, gold poudrés on black, gold takamakiye castle, pine tree mountains, waterfall, etc., all the interior and base gold togidashi flowers of autumn on hirame on black (R.C., 116); plate IX.   | 1 |
| 426 | Natural gourd box and cover, lacquered gourd plant  | 1 |
| 427 | A 4in. hexagonal kogo, Zokoku lacquer, carved phoenix and clouds on diaper base, with border of bats, insects, etc., inside very delicate togidashi of convolvulus, wild mauve, herbs, etc. <i>A most uncommon piece.</i> (Ex. Gilbertson); plate IX. | 1 |
| 428 | Large natural wood box, with gold lacquer panel, Fudo inlaid ivory, in the waterfall  | 1 |
| 429 | A gold fundame oblong kogo, gold takamakiye bridge, the planks in gold foil, trees, clouds, etc.; interior and base gold flowers of autumn on gold hirame on black (Plate IX.)  | 1 |
| 430 | A 4½in. circular, guri lacquer box, red, green and yellow layers (R.C., 190)  | 1 |
| 431 | A wakaza-nuri fubako, imitating mokume, plum blossom in red, gold and silver  | 1 |



## LOT

- |     |   |   |
|-----|---|---|
| 432 | A small mirror black oblong box, decorated gold takamakiye lespedeze, the flowers in silver lacquer, gold poudré clouds and silver togodashi moon; inner tray with similar decoration (Plate IX.) | 1 |
| 433 | Small wood grained box, with panel of a stream in aogai, plum tree, etc., containing two small boxes  | 1 |
| 434 | A small mirror black cabinet gold takamakiye birds and flowers, interior of door and faces of three drawers, togidashi flowers, etc. (ex. Pelton)   | 1 |
| 435 | A long black lacquer fukabo, gold takamakiye floral medallions  | 1 |
| 436 | Black lacquer flute case, gold togidashi flowers, dragon-fly, etc., decoration, with flute  | 1 |
| 437 | Two black lacquer sake cup stands, ditto box, gold decoration, and two ash holders  | 5 |
| 438 | Two mandarin duck-shaped kogo, gold and silver lacquer  | 2 |
| 439 | Brown lacquer ditto, silver lacquer and aogai; kinji stag ditto, signed <i>Korin</i>  | 2 |
| 440 | A black lacquer mirror case, gold takamakiye peonies; small Okame kogo  | 2 |

## Books, Etc.

- |     |  |   |
|-----|--|---|
| 441 | "A Japanese Collection," 2 vols., being the collection of M. Tomkinson                         | 2 |
| 442 | "The W. L. Behrens Collection," <i>de luxe</i> copy in three fascicules                        | 3 |
| 443 | "Legend in Japanese Art," by H. L. Joly  | 1 |
| 444 | "Japanese Names and how to read them," by Koop and Inada                                       | 1 |
| 445 | "G. H. Naunton Sword Fittings Collection"; "The Seymour Trower Collection," both by H. L. Joly | 2 |
| 446 | "Japanese Art and Handicraft," by Joly and Tomita; R.C. Exhibition                             | 1 |
| 447 | "Japanese Sword Mounts in the Hawkshaw Collection," by H. L. Joly                              | 1 |



## LOT

448	"Legend in Japanese Art," by H. L. Joly	1
449	"Arms and Armour of Old Japan"; four other catalogues	5
450	"The Trevor Lawrence Collection"; unbound ditto; "Japanese Lacquer," J. Orange	3
451	"Keinen Kachyo Gafu," birds and flowers, coloured, 4 vols.	1
452	A number of covers containing manuscript catalogues, etc. (? Bowes)	1
453	"Selected Masterpieces of Koyetsu, Korin and Kenzan," Publ., Shimbi Shoin, Ltd.	1
454	Various old Glendining Oriental catalogues, and others	—
455	A book of Chinese paintings on rice paper	1
456	Twenty-seven volumes of "The Japanese Magazine"	27
457	A complete set of the "Japan Society Transactions" to 1924, and the "Nihongi Supplement"; nine odd volumes	—

### Rhinoceros Horn Cups, Etc.

458	A 5½in. cup, carved seascape, castle, etc.; stand	1
459	A 3in. ditto, carved mythical animal and plum blossom	1
460	A 2¾in. ditto, carved people in boat on a lotus pond	1
461	A 7in. lotus cup, horn shaped, the cup carved lotus and pomegranate, the stems forming the support; stand	1
462	A 2¾in. sacrificial cup, conventional tao-tieh carving	1
463	A 2¼in. cup, carved flowers and leaf	1
464	A 4in. sacrificial cup, tao-tieh carving, dragon handle	1
465	A 3in. ditto, conventional mask carving, <i>with two handles</i>	1
466	A 5in. long squat cup, leaf shape, carved persimmon	1
467	A 6in. cup, carved river view, trees, etc. (a.f.)	1
468	A 6¼in. cup, the base carved phoenix, its wings encircling the bowl, dragon handle; stand	1
469	A 4in. cup, carved plum blossom	1



## LOT

- |     |  |   |
|-----|--|---|
| 470 | A pair of 14½in. tusks, the tops carved cups, the supports in openwork carving of song-chu-mei on one, and sages and plum blossom on the other; stands | 2 |
| 471 | A 4½in. tumbler, deeply carved squirrels and grape vine  | 1 |
| 472 | A 3in. vase, carved plum blossom   | 1 |
| 473 | An 11½in. long double, boat-shaped cup with long spout, carved sages and waves   | 1 |
| 474 | A large 4½in. cup, carved pine trees, on stand   | 1 |

*END OF SECOND DAY'S SALE*

## THIRD DAY'S SALE.

WEDNESDAY, MARCH 10th, 1926,

AT 1.30 P.M. PRECISELY.

### Snuff Bottles.

#### Hardstones.

LOT		
475	A good colour light green jade bottle	1
476	Aquamarine, carved in high relief figures birds and pine trees	1
477	Turquoise, carved phoenix and chrysanthemum	1
478	Agate, the whole carved as mushrooms, brown strata carved plum blossoms and peanuts	1
479	Dark green jade (boiled spinach jade), carved sages and trees	1
480	Amber, mottled, tortoise shell type, carved mask handles	1
481	Green moss agate, plain; agate with dendritic leaf	2
482	Agate, dark brown strata, sage playing instrument in boat, and boys	1
483	Lapis lazuli, human head mask handles	1
484	Tourmaline (rubellite), carved plum blossom, with a greenish white thick layer, carved grasshopper on flower	1
485	A very fine specimen of tourmaline, the bottle olive green carved as finger citron, with exceedingly fine colour thick rubellite strata, carved Putai and children; a magnificent specimen (Plate X.)	1
486	A rare conglomerate, black siliceous matrix filled with pebbles; a fine petrological specimen (ex. G-Smith)	1
487	Fossil hexactinelled coral, the calices filled with black limestone imitating a mass of flowers	1



## LOT

488	Blood stone, carved lotus, with two gold fish carved in the red; mask handles	1
489	Agate, black strata carved boys playing various games	1
490	Agate, plain, pebble shape; aventurine, melon shape	2
491	A large brown moss agate bottle; a good specimen	1
492	Agate, cloudy, carved leaf on which is a grasshopper carved in the black strata	1
493	A well marked grey chalcedony bottle; carnelian, carved dragon	2
494	Agate, well carved with a sage and a kylin	1
495	Crystal, carved plant; ditto, characters; smoky ditto, pine and plum trees	3
496	Agate, cloudy, with a light green strata, carved grasshopper	1
497	Brown agate, with black strata carved birds, pine and lotus; ribbed chalcedony bottle	2
498	Brown moss agate, a good specimen; well marked agate bottle	2
499	Hairy quartz, carved with a chrysanthemum	1
500	White jade, carved plum blossom and bamboo, and poem; another, carved persimmons	2
501	Smoky crystal, interior painted figures	1
502	Another, interior painted gold fish, etc., strata carved lotus	1
503	Agate, mask handles, black markings; another, interior painted figures, etc.	2
504	Smoky crystal, the interior painted with Emperor and attendants	1
505	Two clear crystal bottles, interior painted figures	2
506	Another, well painted interior gold fish, etc.; agate, similar decoration	2
507	A brown and whitish agate bottle, carved and shaped as a frog	2
508	Smoky crystal, carved pine tree and landscape; another, two sages	2



## LOT

509	Turquoise (chrysocolla?), heavy green mineral, carved all over in high relief, with hunters in mountains, and wild beasts, etc. (ex. G-Smith), Plate X	1
510	White jade, carved with a ceremonial hanging; another, rice pattern	2
511	Agate, carved rice pattern; crystal, carved crabs, etc.	2
512	Yellow brown opaque amber, carved with ladies, children, pine tree, etc.; Plate XII.	1
513	A very fine colour green jade bottle, plain	1
514	A carnelian bottle of good colour, carved with birds on plum tree	1
515	Tourmaline (pink rubellite), with transparent pale green thick strata, carved two boys; Plate XI.	1
516	A fine colour pink coral gourd shaped bottle, carved gourd plant and insects	1
517	A fine specimen of grey jade, with light strata, carved three sages	1
518	A well marked turquoise matrix bottle (Plate XI.)	1
519	Malachite, good colour, carved birds, pine, and maple trees	1
520	A green jade bottle, carved as a figure holding a large leaf of brown jade; (illus., Gordon Smith sale, Oct., 1920).	1
521	Lapis lazuli, with silver mounts, inlaid various stones (Plate X.)	1
522	A fine specimen of brown opaque amber, well carved phoenix and peonies	1
523	A large specimen of turquoise, deeply carved and undercut, birds on peony trees	1
524	A nice amethyst bottle, carved sages under pine tree, and two mounted figures (Plate X.)	1
525	Cloudy agate with brownish strata, carved boys playing with bat, and lotus, etc.	1
526	Green jade, finely carved in high relief with peony flowers (ex. Gordon Smith)	1



LOT		
527	White jade with large black strata, carved sage and temple entrance (Plate X.)	1
528	An opaque yellow amber bottle, carved Emblems of Longevity	1
529	A good colour blue agate bottle, carved in high relief phoenix and peonies	1
530	Opaque brown amber, melon shaped, carved leaves and butterfly (Plate X.)	1
531	Dark green jade, carved chrysanthemum and poem	1
532	A good colour pink tourmaline bottle, carved dragon	1
533	Brown amber, with putty coloured portions, the whole carved squirrels on grape vine (Plate X.)	1
534	Cloudy agate, carved standard bearer on horseback, in brown strata	1
535	Opaque yellow amber, carved dragon and phoenix	1
536	Turquoise, carved in high relief and undercut, cat, squirrel and grape-vine (Plate XI.)	1
537	A fine specimen of green moss agate	1
538	A brown agate bottle with black strata, carved with sage, lady and animal	1
539	<i>A fine colour pink coral bottle, carved carp, lotus, cat, peony, etc. (Plate XI.)</i>	1
540	A light green jade bottle, carved man in boat, and man fishing	1
541	A good colour amethyst bottle, carved pine tree in high relief	1
542	Green jade, melon shape, carved butterfly and leaves (Plate XI.)	1
543	Malachite, carved with crab and millet, etc.	1
544	Pink tourmaline (rubellite), carved Wu Ti with Garuda bird and Taikobo fishing (illus. Gordon Smith)	1
545	Aquamarine, carved in high relief with a crane under a pine tree (Plate XI.)	1
546	A smoky crystal bottle, in crystal form, base carved eagle and crane; pearl stopper (ex. Gordon Smith)	1



## LOT

547	Transparent yellow amber, carved with lady in boat and house, chrysanthemums, etc.	
548	Jade, one side white, the other very dark green jade, the latter carved garuda bird and tiger (ex G.-Smith) (Plate XI.)	1
549	Cloudy agate, carved dragon; a large piece	1
550	Grey jade with lighter portion carved as a female fairy standing on two birds followed by a man on a bird; reverse, engraved and gilt poem (illus. Gordon Smith, (plate IV.)	1
551	Silver, with applique kingfisher feather, floral decoration (Plate XI.)	1
552	Cloudy agate with black dendritic formation, carved as an eagle	1
553	Sardonyx, a fine red colour with white veining	1
554	Moss agate, of various hues, carved iris	1
555	A plain lapis lazuli bottle of good colour	1
556	A light green jade bottle, carved rice pattern	1
557	A good colour light green jade bottle, carved emblems of longevity	1
558	Malachite, carved birds on flowering tree	1
559	Transparent yellow-brown amber, carved with Shou Lau and attendant under pine tree	1
560	A prettily marked plain light green jade bottle	1
561	Aquamarine, carved phoenix and peonies	1
562	Turquoise, melon shaped, carved leaves, tendrils and butterflies	1
563	A fine colour plain green jade bottle	1
564	A plain brown amber bottle, mask handles, tortoiseshell colouring	1
565	Aquamarine, carved birds on plum tree	1
566	A fine specimen of chalcedony with various markings	1
567	An opaque amber pebble-shaped bottle	1



LOT		
568	A fine large specimen of hornbill, the red portion carved as dragon handles	1
569	Carnelian, fine colour, carved deer and fungus	1
570	Amber, dark brown specimen, carved frogs and lotus, ducks, etc.	1
571	A cinnamon coloured jade gourd-shaped bottle, carved gourd plant	1
572	A plain opaque dark yellow amber bottle	1
573	Amethyst, good colour, carved squirrel and grape vine	1
574	Dark brown amber, interior painted figures, etc.	1
575	A blue-green moss agate bottle, with various markings	1
576	Small malachite bottle, carved stag, bat and peach tree	1
577	Tourmaline (rubellite), a pair of gourd shaped bottles, carved gourds	2
578	Amethyst, carved as a bunch of grapes	1
579	A fine pink coral bottle, carved with a melon plant	1
580	A light brown amber bottle with very dark brown marking	1
581	Lapis lazuli, a good colour plain bottle	1
582	Tourmaline (pink rubellite), the sides carved dragon	1
583	Amber, dark brown, carved to represent a pebble	1
584	A plain light green jade bottle	1
585	A white jade bottle, carved as a finger citron	1
586	Turquoise, carved with the emblems of Longevity, in relief	1
587	Amber, carved with a sage on horseback, attendant and plum blossom	1
588	Amethyst, good colour, carved as a strawberry	1
589	Light and dark brown amber, carved with mask handles	1
590	A light green jade bottle, carved stag and plum blossom	1
591	Malachite, carved stag, pine tree, crane, etc.	1
592	Light brown transparent amber, carved Dogs of Foh playing	1
593	Dark smoky crystal with white strata, carved goats, pine tree, etc.	1



## LOT

594	White jade peach-shaped bottle, with nice green marking	1
595	A good colour plain turquoise matrix bottle	1
596	A cloudy agate, brownish strata, carved with sage under plum tree, and attendant	1
597	A plain opaque brown amber bottle	1

**Red Lacquer.**

598	Carved with sage and two attendants visiting another sage in a house	1
599	Fuchow red lacquer, decorated peony, etc.	1
600	Carved conventional lotus design on green diaper base	1
601	Carved all over with a melon plant on green base	1
602	Carved boys carrying jardiniere, sage, etc., in mountains	1
603	Carved Baifuku and crane, scroll cloud surround	1
604	Sage in boat under palm tree, another in house writing	1
605	Carved all over with a bean plant	1
606	Carved with the emblems of the Eight Immortals, lotus, etc.	1
607	Carved with Kwanyin seated on a leaf on waves	1
608	Carved with the story of the Three Laughters, diaper base	1
609	Carved with boys playing blind man's buff, etc.	1
610	Carved with man climbing over fence to visit ladies	1
611	Carved with boys playing various games	1

**Cloisonné.**

612	Two vase-shaped bottles, conventional lotus and swastika, etc., on light blue	2
613	A white bottle with landscape in colours	1
614	White, Dutch female figures in colours; another, Chinese ladies and boys	2
615	Canton ditto, flowers on yellow ground, Kien Lung	1
616	Purse-shaped ditto, flowers on violet ground	1



LOT		
617	White ditto, with mythological persons in colours	1
618	Dutch figures of ladies and children in colours on black	1
619	A finely worked piece, containing European figures in medallions, with floral surround	1
620	Conventional flowers on yellow; sages, etc., on light blue	2
621	Flowers and butterflies on dark blue (two); kingfisher, lotus, etc., on turquoise	3
622	Twin bottle, curtain; white medallions on dark blue; sages on dark blue	3

### Glass.

623	Cameo, green and pink figures, etc., on white; red squirrel and vine on white; green dragon on red and yellow	3
624	Realgar imitations, red carp on yellow; ditto, sages, dog of Foh, etc.	2
625	Cameo, blue plum tree on white; red figures, crane, etc., on frosted; red incense burners on opaque turquoise	3
626	Ditto, light green fisherman, bridge, etc., on brown; red gold fish on plain glass; green crabs on putty colour	3
627	Ditto, white plum blossom on blue; green leaves and grasshoppers on yellow; green strawberry; herons and lotus in colours on opaque white	4
628	Ditto, red dragons on opaque white; red plum tree, tiger, etc., various flowers in colours on frosted white	3
629	Ditto, red gourds on opaque white; and a pair of pomegranate-shaped ruby bottles	3
630	Plain glass interiors painted figures (2); tigers and flowers; blue ditto, painted Court scene	4
631	Four similar bottles, interior painted figures	4
632	Two ditto, landscapes; a plain ditto, carved Spanish dollars; imitating realgar, red, yellow and green colouring	4
633	Imitating realgar, red and yellow colours; plain Indian red bottle; agate imitation, lighter portion carved eagle	3



## LOT

- 634 Red cameo, sages, etc., on frosted; plain ruby, mask handles; opaque white, gold conventional applique; turquoise dragon on red 4
- 635 Imitating realgar, red and yellow carved bats and characters; another, red, yellow, and green 2
- 636 Opaque white, decorated flower vase; ditto, quails and millet; ditto, birds and flowers; another, pine cone shaped 4

### Porcelain.

- 637 Polychromes, dragons and clouds; phoenix and flowers; ditto, two grasshoppers 3
- 638 Ditto, large gourd-shaped bottle, decorated gourd vine and bats; another, gourd-shaped, lotus decoration 2
- 639 Ditto, perforated, boys in high relief on turquoise; rouge de fer warrior; dragon and waves 3
- 640 Ditto, decorated in relief, sages in boat, etc.; ditto, noble visiting ladies; ditto, dragon and waves; ditto, flower vases 4
- 641 Ditto, the Eighteen Lohans; carp bottle; lotus leaf and butterflies; Shoulao; Dutch decoration of double faces 5
- 642 Ditto, decorated in high relief with the Eight Immortals; ditto, the Eighteen Lohans; ditto, stags and rocks 3
- 643 Ditto, and undercut, phoenix and dragons (2); Dogs of Foh; and the Eighteen Lohans 4
- 644 Ditto, decorated in high relief, sages in boat, etc.; ditto, dragon and phoenix; ditto, sages on waves 3
- 645 Ditto, shaped as a sage; ditto, boy with cash; ditto, seated boy; ditto, Dog of Foh with ball 4
- 646 Ditto, reposing lady; squirrel and vine; Dog of Foh and pup; sage with gourd 4
- 647 Ditto, squirrel and vine (2); ditto, Shishi; ditto, boy and basket (2) 5
- 648 Ditto, figures and house in high relief; ditto, Eighteen Lohans; ditto, dragon and tiger; ditto, dragon and phoenix 4



## LOT

649	Ditto, emperor on elephant; and warriors on Dogs of Foh; figures in boat; dogs of Foh	3
650	Ditto and undercut, Dogs of Foh; phœnix and dragon; bats and clouds	3
651	Ditto, emblems of Longevity; kylin, phœnix, etc.; dragons and waves; dragons	4
652	Ditto, emblems of Longevity; dragons (2); bats and clouds; dragon, in blue and rouge de fer	5
653	Ditto, a pair, sages and flowers; lotus leaf; lady and sage; two others	6
654	Blanc de chine; the Eighteen Lohans in high relief (2); red, in relief and undercut emblems of the Eight Immortals	3
655	Blue ditto, dragon and phœnix; red ditto, emblems; blanc de chine, raised dragon; ditto, lotus	4
656	Blanc de chine, lotus leaf; ditto, leaf-shaped, diapers; polychrome, longevity emblems; chrysanthemums	4
657	Celadon, raised flowers, etc., blue, bats and waves; blanc de chine, the Eight Trigrams; plain robin's egg bottle	4
658	Blue and white, dragon and clouds; kylins and phœnix; leaf-shaped, decorated landscape; camel shaped	4
659	Two red glaze bottles, herons and lotus pond in relief; ditto, emblems	2

## J Bories.

*Coloured, carved in deep relief, and undercut, unless otherwise stated.*

660	Ladies in boat under trees, in house and garden, <i>Kien Lung</i> seal	1
661	Carved and shaped as a seated lady holding a peony	1
662	Lady in garden, flowers, etc., and lady at window	1
663	Well-carved peacocks and peonies, and ladies in garden	1
664	Plain brown ivory, carved as a sage with peach	1
665	Carved as a lady seated on a chair holding a flute	1
666	Ladies in house by lotus pond, and ladies playing chess, etc.	1



## LOT

667	Sage riding on a Dog of Foh, and another sage with horse, attendant, etc.	1
668	Plain ivory, well carved with a noble seated in a house, and the arrival of mounted visitors (Plate XII.)	1
669	Decorated numerous gold fish in waves, trees, etc.	1
670	Carved and shaped as a Chinese lady with fan	1
671	Finely carved and undercut, with numerous squirrels clam- bering over grape vine (Plate XII.)	1
672	Sage in boat, and two other sages under trees	1
673	Well carved, with the Seven Sages of the Bamboo Grove	1
674	Plain brownish ivory, carved and undercut with two Chinese ladies with peonies, palms, etc. (Plate XII.)	1
675	Decorated with jays on a flowering tree, chrysanthemums, etc.	1
676	Etched with ladies and sage in garden, on red lacquer base	1
677	Similar decoration, peonies and rocks, and butterflies, same technique	1
678	Mounted warrior, and sage in mountains, etched on black lacquer base	1
679	Carved and undercut, and coloured, numerous goldfish in waves, trees, etc.	1
680	Carved and shaped as a boy holding a peach	1
681	Etched various flowers on red lacquer base, with etched floral surround on black lacquer	1
682	Plain white ivory, carved in relief with various sages on clouds, rocks, and one in a boat (illus., Gordon Smith)	1
683	Decorated conventional lotus design, in plain ivory, with a black lacquer surround (Plate XII.)	1
684	Coloured, carved and finely undercut with the Seven Sages of the Bamboo Grove	1
685	Ditto, six sages under palm trees, chrysanthemums, etc.	1
686	Shaped as a seated boy holding a bunch of peaches	1
687	Ditto, two sages about to visit a noble seated in his house	1



## LOT

688	A plain old ivory figure shaped as a Chinaman holding his pigtail	1
689	Carved, with numerous sages in the mountains, trees and clouds	1
690	Carved and shaped as a lady with a water pipe (Plate X.)	1
691	Ladies playing with numerous children outside a house and under trees, etc.	1
692	Carved and shaped as a standing Goddess, with fan	1
693	Plain ivory, carved and shaped as the Two Merry Genii (Plate X)	1
694	Etched, two Goddesses in garden, peonies, etc., on red lacquer base	1
695	Etched, Goddess under a magnolia tree, chrysanthemum, peonies, etc.	1
696	Carved, coloured and undercut, two ladies and numerous children playing	1
697	Decorated with numerous ladies playing instruments, etc., and singing, houses, trees, etc.	1
698	Carved and shaped as the Two Merry Genii, with large lotus leaf	1
699	Ditto, ladies in boats on lotus pond, weeping willow, etc.	1
700	Carved in high relief and undercut, carp amongst lotus plants	1
701	Carved and shaped as Kwanyin the Maternal	1
702	A similar piece of an old man with scroll, and sword on his back	1
703	Sage and attendant on a bridge, another sage and attendant, trees, houses, etc.	1
704	Mounted warrior with standard bearer, attached by men on Dogs of Foh	1
705	Mounted warrior and attendants bidding good-bye to a sage, bridge, river, etc.	1
706	Four horses underneath weeping willow trees	1
707	Two sages and a Goddess under palms in the moonlight	1

## LOT

708	Decorated with six sages standing on their various emblems on waves	1
709	Carved and shaped as a Chinese lady with a basket of peaches	1
710	Carved and shaped as the Two Merry Genii, with a scroll	1
711	Carved with six Buddhist sages standing on their emblems on waves	1
712	Carved with ladies playing with numerous children under palm trees	1
713	Carved and shaped as a boy holding a peach branch	1
714	Plain ivory, well carved with a temple scene, and the legend of the Fox Priest	1
715	Plain ivory, finely carved with ladies amongst palms and peonies, and another lady at window arranging flowers; a fine piece	1
716	Plain ivory, balaster shape, with Kwanyin seated in lotus petal on the sea, followed by two boys on lotus leaves (illus. Gordon Smith, 280)	1
717	Plain cylindrical ivory, carved with a sage on a mule, and attendant carrying flower vase	1
718	Deeply carved, coloured and undercut, with ladies playing instruments and dancing outside a house	1
719	Ditto, ladies playing with numerous boys on a verandah, palm trees, etc.	1
720	Carved and shaped as a standing sage with fan	1
721	Carved and shaped as a standing Chinese female deity, with robe with long flowing sleeves	1
722	Carved with seven horses grazing under weeping willow tree	1
723	Carved and shaped as a lady holding a boy and a bunch of chrysanthemums	1
724	Seated emperor under willow tree, and attendant; artist and attendants on reverse	1
725	Carved and shaped as a reposing lady with fan	1
726	Carved with sage and lady in phoenix and dragon-headed boats on lotus pond	1



## LOT

- |     |  |   |
|-----|--|---|
| 727 | Carved and shaped as a standing lady with a basket of peaches                    | 1 |
| 728 | Two ladies and attendants in a garden with various flowers and trees             | 1 |
| 729 | Carved and shaped as a lady seated on a garden seat holding a peony              | 1 |
| 730 | Sages visiting another sage, who is seated on his verandah; flowers, trees, etc. | 1 |
| 731 | Carved and shaped as a standing lady holding a lotus-shaped sacrificial vessel   | 1 |
| 732 | Etched with numerous ladies and attendants in a garden, on red lacquer base      | 1 |
| 733 | Plain ivory, carved in high relief with the Eighteen Lohans, attributes, etc.    | 1 |

*END OF THIRD DAY'S SALE.*

## FOURTH DAY'S SALE.

THURSDAY, MARCH 11th, 1926,

AT 1.30 P.M. PRECISELY.

### Netsuke.

#### Wood.

#### Lot

- |     |   |   |
|-----|---|---|
| 734 | A small figure of a caparisoned horse on a stand  | 1 |
| 735 | A long figure of a sennin, with ivory gourd and lacquered loin cloth  | 1 |
| 736 | A nice old figure of a scowling hunter with bow and arrow   | 1 |
| 737 | A nicely carved figure of a juggler balancing ball on his forehead, signed <i>Sanraku</i>   | 1 |
| 738 | An old carving of a cat on a dried fish   | 1 |
| 739 | A wood and ivory figure of an itinerant singer beating his gourd  | 1 |
| 740 | An old figure of Shoki with oni on his hat  | 1 |
| 741 | A figure of a coolie carrying a traveller on his shoulders  | 1 |
| 742 | Ivory frogs playing with a mokugyo on a skull, and a copper snake, signed <i>Shuzan</i>   | 1 |
| 743 | Figure of an acrobat balancing himself on his hands on a small drum   | 1 |
| 744 | A small junk with a man lying on its roof, inside a finely carved ivory group of various passengers, singing, etc., signed <i>Gyokushin</i> | 1 |
| 745 | A well carved figure of an enraged warrior pulling his hair, signed <i>Sanraku</i>  | 1 |
| 746 | An old ebony figure of Okame and child, signed <i>Minkoku</i>   | 1 |
| 747 | A yamabushi blowing a conch horn and seated inside a large conch shell  | 1 |



## LOT

748	Shoki seated on a pedestal, oni hiding underneath, signed <i>Bunryusai</i> ; manju, carved Chinnan and dragon, signed <i>Sadakata</i>	2
749	Hare and ball; snarling tiger, signed <i>Hoichi</i>	2
750	An old figure of an oni tying his obi at the back	1
751	An old seated cockerel, coral comb lobes, etc., signed <i>Ikko</i> (Plate XIII.)	1
752	Ono-no-Komachi carrying basket; Shoki tying up back of oni	2
753	Long-necked ghost appearing over the back of a scarecrow	1
754	Oni resting on Shoki's back, signed <i>Shigenobu</i> ; Daikoku with captured thief	2
755	Small figure of a Hagoromo dancer, signed <i>Gyokusai</i> (Plate XIII.)	1
756	Small figure of a tortoise; coiled snake with captured frog,	
757	A quaint figure of a shishi with a circular stone	1
758	A well carved figure of Raiden beating his drum	1
759	A minutely carved figure of Chinnan encircled by his dragon (Plate XIII.)	1
760	A curious old figure of a badger with pail, signed <i>Hogen Shugetsu</i>	1
761	A nice old figure of a coiled dragon	1
762	An old figure of Shoki holding in his hand an ivory oni, signed <i>Masataka</i> (Plate XIII.)	1
763	A curious old figure of the Oil Thief	1
764	Seated Nio making a sandal, signed <i>Yoshihisa</i> ; stretching Daruma with ivory face	2
765	Seated tiger, signed <i>Tomokuni</i> ; two puppies playing; badger, signed <i>Minko</i>	3
766	A fine old figure of a sennin with lotus leaf hat, holding a cockerel (Plate XIII.)	1
767	An old figure of Shoki with captured oni, signed <i>Kazuhide</i> ; three blind men astraddle a tree trunk	2
768	Kanzan dancing with brush; seated figure of a Sennin	2
769	Monkey playing with an octopus; and oni with namazu fish	2



## LOT

770	A nice old figure of a large sennin beating a drum, with small foreigner at his feet blowing a trumpet, signed <i>Kutsuto</i>	1
771	An old seapine figure of a sennin holding his long beard	1
772	A reposing cow; wolf with human skull	2
773	A seapine figure of a coral diver; ditto, frog, nasubi and pimento	2
774	Mounted Daimyo and four attendants; boy with ox, signed <i>Issei</i> ; Daruma stretching, signed <i>Toyomasa</i>	3
775	A fine long figure of a Dutchman holding a cockerel (Plate XIII.)	1
776	Benten and Takenouchi and waves; two nio reposing, signed <i>Gyokan</i>	2
777	Seated old man pulling out whiskers with pincers; blind man lifting stone, signed <i>Shumin</i>	2
778	An old figure of a foreigner with long trumpet and child on his back (Plate XIII.)	1
779	Men sharpening chopper, signed <i>Bizan</i> ; acrobat; group of fruits, signed <i>Akinobu</i> ; Jurojin	4
780	Toad, signed <i>Yoshitada</i> ; two puppies playing, signed <i>Ittan</i> ; rat on Daikoku's mallet, signed <i>Sukenao</i>	3
781	A well-carved group of cockerel, hen and chicks, signed <i>Masanao</i>	1
782	A fine group of two wrestlers in the Kawazu throw, signed <i>Ichimin</i>	1
783	An old figure of a foreigner in well-carved cloak, with monkey on his shoulder, signed <i>Riuhan</i> (Plate XIII.)	1
784	A nice figure of Gama Sennin with frog on his shoulder	1
785	Sotoba Komachi; seated sage reading book; man with bag of oni, signed <i>Keisai</i>	3
786	A finely carved figure of a warrior with band of cloth in his mouth, signed <i>Sanko</i> , <i>Kokeisai</i>	1
787	A very finely carved figure of Chinnan, completely entwined by a dragon	1
788	An old figure of a foreign hunter with bow and quiver of arrows (Plate XIII.)	1
789	Okame in curious dancing pose	1



LOT		
790	A well-carved group of Ashinaga and Tenaga, with octopus	1
791	An old figure of a sage carrying child in blouse portion of his robe, signed <i>Miwa</i>	1
792	A long curious figure of a temple drummer	1
793	A curious figure of a reposing crane on bed of flowers	1
794	A well-carved pyramid of tortoises, signed <i>Tadakazu</i>	1
795	Puppy, octopus and bowl; snarling tiger, signed <i>Tomomitsu</i> ; curious dog	3
796	Caparisoned horse; fisherman with basket of fish, signed <i>Masatoshi</i>	2
797	Kapper caught in clam shell, signed <i>Jugyoku</i> ; horse and groom fording a stream, signed <i>Issai</i>	2
798	A long figure of a namazu fish	1
799	A figure of a Sambaso dancer with bells, etc., signed <i>Higo no Daijo</i> ; monkey Sambaso dancer	2
800	Peasant dancer, ivory mask; Sambaso dancer, ivory mask; Bugaku dancer, signed <i>Komin</i> ; Benten, signed <i>Sadanobu</i>	4
801	Flat oblong piece, carved with the ghosts of Oiwa and her lover, Kohei, as they appeared to Tamiya Iyemon, who, having thus thrown them into the river, wrote to Amado, saw them rise later from the mud where he was fishing by Naito Koseki (made specially in 1910) (both sides illustrated Plate VIII., Behrens Coll., Dec., 1913)	1
802	Okame pelting oni with beans; Gama Sennin and his frog	2
803	A minutely carved small oni beating drum, signed <i>Ryogyoku</i>	1
804	Gama Sennin and frog (A.F.); the Disappointed Ratcatcher, signed <i>Sokei</i> ; curious figure of a seated oni	3
805	A curious old figure of a standing human-headed dragon	1
806	A powerful group of two wrestlers, signed <i>Shigetaku</i>	1
807	A curious old figure of a seated sennin with basket, with hideous face	1
808	A curious old figure of a sennin with shishi jumping up on to him	1
809	A nice old figure of a sennin, probably Tekkai	1



## LOT

- |     |   |   |
|-----|---|---|
| 810 | A mythological creature, partly dragon, partly horse, with devil's head   | 1 |
| 811 | A nicely carved figure of a lady with basket, signed <i>Yoshitaka</i>   | 1 |
| 812 | A figure of a temple drummer, signed <i>Miwa</i>  | 1 |
| 813 | A well-carved peach with minutely carved ivory figure of Momotaro inside, signed <i>Gyokuso</i>                                 | 1 |
| 814 | A minutely carved figure of Hotei asleep on his bag; head, hands and feet inlaid ivory, signed <i>Yoshihide</i>                 | 1 |
| 815 | An old figure of a hunter with bow and arrow on a horse   | 1 |
| 816 | A curious figure of a skeleton, standing up and holding a tombstone   | 1 |
| 817 | An old figure of a foreigner with trumpet and baby on his back  | 1 |
| 818 | A nice old figure of a sarumawashi  | 1 |
| 819 | A fine ebony figure of a coral diver, with huge coral branch on his back, signed <i>Jugyoku</i>                                 | 1 |
| 820 | A curious figure of a monkey-faced shishi   | 1 |
| 821 | An ebony figure of a fox dancer, with ivory fox mask  | 1 |
| 822 | A well-carved figure of two wrestlers in the Kawazu throw   | 1 |
| 823 | A quaint figure of a seated oni pulling a rope  | 1 |
| 824 | Shoki with net of captured oni on his back  | 1 |
| 825 | A long figure of shinaga holding a shell  | 1 |
| 826 | A snarling tiger, signed <i>Masanori</i>  | 1 |
| 827 | A wooden boat on which is an ebony oni tying in a branch of coral with silver rope, signed <i>Issai</i>                         | 1 |
| 828 | A well-carved figure of Gama Sennin riding on a frog, holding another on his shoulder, signed <i>Itsuo</i>                      | 1 |
| 829 | A small group of two horses and three monkeys, signed <i>Minko</i>  | 1 |
| 830 | A curious group of an olden-time warrior on horseback   | 1 |
| 831 | A fine long figure of Ashinaga with basket, signed <i>Sessai</i>  | 1 |
| 832 | A long figure of Jurojin with extremely elongated forehead, on the top of which are two men cleaning same, signed <i>Sessai</i> | 1 |
| 833 | A nice old figure of a sage stretching, probably Tekkai   | 1 |



## LOT

834	An old figure of a sennin with crutch	1
835	Ashinaga and Tenaga, the latter reaching for an octopus	1
836	A figure of a temple servant repairing his broken geta, signed <i>Keimin</i>	1
837	Ashinaga and Tenaga, the latter reaching for a clam shell	1

## Lacquer.

838	A fine red lacquer manju, etched and carved with Kinko on a carp	1
839	A silver lacquer fox dancer, ivory mask; black lacquer boy on hobby horse, ivory details	2
840	A large old lacquered piece, Shoki and oni, Shuzan style	1
841	A fine shark-skin lacquer plaice	1
842	A tsuishu lacquer gourd-shaped netsuke, carved various sages, boys, etc.	1
843	A Shuzan style figure of Okame, with ivory face and hands, signed <i>Shuzan</i>	1
844	A fine tsuishu lacquer figure of Jurojin (R.C., 77)	1
845	A tsuishu lacquer figure of a Shojo dancer, signed <i>Toyoyeshi</i>	1
846	A Shuzan style figure of a priest with fungus-shaped jui	1
847	A small gold lacquer figure of a Shojo dancer, coral face, ivory hands and feet	1
848	A gold lacquer and wood figure of Jurojin reading make-mono, ivory face	1
849	A red mokume figure of a conventional dove	1
850	A fine tsuishu lacquer peach, carved Jurojin on crane, attendant, etc.	1
851	A ditto boy with drum; ditto, seated boy	2
852	A ditto mask of Hannya, signed <i>Soso</i>	1
853	A Shuzan style figure of a Dutchman, with cockerel, signed <i>Kozan</i>	1
854	A similar figure of an old sage with sword	1
855	A ditto figure of Takenouchi with a peach	1

## LOT

856	A curious old red-brown and gilt dragon-headed fish	1
857	A fine red tsuishu lacquer mask of a devil, signed <i>Minko</i>	1
858	A fine lacquered figure of a boy, in various colours	1
859	A wooden figure of Raiden; ditto Futen; boy with red lacquer details	2
860	A helmet in various lacquers; a conventional sparrow, lacquered wheel-shaped medallions, signed <i>Kwansai</i>	2
861	Two lacquered dancers, various colours, with ivory details	1
862	A solid lacquer hanju of about forty layers, various colours, the disc portion tsuishu, carved with a nio, with red and green background; seal, <i>Fumaru</i>	1

## J Bory.

863	A very finely executed landscape of houses, trees, etc., signed <i>Kagetoshi</i>	1
864	A small group of a monkey wrestling with an octopus	1
865	An old figure of a boy holding up a goat on his shoulder	1
866	A nice old figure of Shoki with huge hat, bow and arrow (Plate XIV.)	1
867	Oni carrying large bag filled with other onis, signed <i>Yasuchika</i>	1
868	A minutely-carved figure of a standing monkey eating persimmons	1
869	A minutely-carved shishi with an aventurine ball, signed <i>Ono Ryumin</i>	1
870	A group of a warrior throwing an ox, signed <i>Hogyoku</i>	1
871	An old figure of a rat with a candle	1
872	A long figure of a Chinese lady with peaches and basket (Plate XIV.)	1
873	An old figure of a horse grazing	1
874	An old figure of Chinnan and his dragon (Plate XIV.)	1
875	A large group depicting a festival procession	1
876	An old figure of a ghost with hideous mask (Plate XIV.)	1



LOT		
877	Figure of a horse grazing	1
878	A figure of a reposing dog, and puppy playing with sandal on string	1
879	An old figure of a Dutchman, carrying a rabbit on his stick (Plate XIII.)	1
880	A finely-carved figure of Gama Sennin, signed <i>Tomokazu</i>	1
881	A minutely-carved Kiyohime dancer, signed <i>Jugyoku</i>	1
882	A curious old figure of a seated karashishi (Plate XIV.)	1
883	A well-carved nio cleaning a bell, signed <i>Tomomasa</i>	1
884	A mythological elephant under a flowering tree, signed <i>Kwaigyokusai Masatsugu</i>	1
885	A well-carved group of two sages, four boys and a cow, under a pine tree, signed <i>Ryushin</i>	1
886	An old figure of a sage holding a peach, with foreigner seated on his head (Plate XIV.)	1
887	A fine old figure of a foreign hunter with bow and quiver of arrows (Plate XIV.)	1
888	A neatly-carved cat with red collar, and bell	1
889	Kadori with large knife, on the back of a namazu fish	1
890	A duck with silver lacquer wing, and aogai flower petals	1
891	A curiously shaped dragon-headed bird (Plate XIV.)	1
892	A group of a lady wrestling with an octopus, signed <i>Ikkosai</i>	1
893	A well-carved figure of Daikoku on bale, rats, etc., signed <i>Seiju</i>	1
894	A long figure of Ashinaga as a temple drummer (Plate XIV.)	1
895	An old figure of a sage with sickle, and boy on his back	1
896	A fine old mask of Hannya, signed <i>Deme Juman</i>	1
897	A curious mythological being, part horse, part dragon, with human head (Plate XV.)	1
898	An old figure of a traveller with sword	1
899	A well-carved group of Ashinaga and Tenaga, with octopus	1
900	An old figure of a dancing lady with peach branch (Plate XV.)	1



## Lot

901	A well-carved sambaso dancer, ebony Jo mask, signed	1
902	An old figure of Moso, with bamboo shoots and patches of snow on his clothes (Plate XV.)	1
903	An old figure of a sennin holding a jui round his neck	1
904	A wood, ivory, and shibayama inlay figure of Jurojin, signed <i>Hirotada</i>	1
905	A curious old figure of Jurojin (Plate XV.)	1
906	Standing sage with a peach, entwined by a mermaid	1
907	The arm of the Rachomon, with holding an oni in its hand	1
908	A foreigner with walking stick and monkey on his shoulder (Plate XV.)	1
909	A well-carved karashishi, signed <i>Hidemasa</i>	1
910	Figure of a seated kilin, looking upwards	1
911	Chokwaro riding on his horse (Plate XV.)	1
912	Standing Daruma stretching himself, seal <i>Gyokuzan</i>	1
913	A well-carved two-headed mythological dove, signed <i>Riusai</i>	1
914	A bird cage containing a bird in colours and aogai	1
915	An old figure of a Tennin with peach (Plate XV.)	1
916	Chokwaro with his horse on his shoulder, signed <i>Ikebori</i>	1
917	Old man in geta, with a besom	1
918	Carpenter at work on a plank, his coat lacquered, signed <i>Gyokuzan</i>	1
919	Figure of a Dutchman holding a stork (Plate XV.)	1
920	Standing figure of Daruma, stretching and tearing his clothes, signed <i>Mitsukazu</i>	1
921	Standing fisherman holding a big carp on his shoulder	1
922	A pedlar carrying his pack on his back and ringing a gong (Plate XV.)	1
923	A standing wrestler exhibiting his championship apron	1
924,	A screen-shaped netsuke, carved and pierced Tekkai Sennin	1



## LOT

925	A small carving of Jurojin, with red sash to his gourd, signed <i>Homin</i>	1
926	A curious old figure of a teacher with fan (Plate XV.)	1
927	Shubaishi seated on an ox	1
928	A figure of a Dutchman with a cane and monkey on his shoulder (Plate XV.)	1
929	Shoki seated, with an oni on his knee	1
930	Old figure of a fisherman with an octopus over his head (Plate XV.)	1
931	A well-carved and undercut basket of flowers, signed <i>Masat- sugu</i>	1
932	A fisherman carrying a flaming torch and a cormorant	1
933	Kikujido seated, holding a brush and chrysanthemums	1
934	Squatting figure of a fisherman with a carp, seal <i>Masakiyo</i> (Plate XVI.)	1
935	Man tying his obi	1
936	Jiraiya killing the huge snake, signed <i>Hakushu</i>	1
937	Small group of a woman drawing rice through threshing rake, boy and fowls, signed <i>Shinsai</i> (Plate XVI.)	1
938	The peasant finding the peach in which is Momotaro	1
939	A figure of the chief of "The Forty-Seven Ronin," signed <i>Shigemitsu</i> (Plate XVI.)	1
940	A finely inlaid horse, shibayama technique, signed <i>Kazuyuki</i>	1
941	Two boys playing on a bag, under which is Hotei, signed <i>Hakuunsai</i>	1
942	A very finely carved group of the animals of the Zodiac, signed <i>Kwaigyokusai</i> (Plate XVI.)	1
943	A nicely lacquered figure of Shojo dancer, signed <i>Tomoyuki</i>	1
944	Oni hiding under a pedestal on which is Shoki's hat	1
945	A small figure of a dancer beating a drum (Plate XVI.)	1
946	A monkey showman carrying his monkey	1

LOT		
947	A seated kilin looking upwards	1
948	Okame depicted as Josan-no-Miya, XVI.)	1
949	Theatrical scene, armourer forging a sword, with Inari aiding him, signed <i>Shigemitsu</i> (Plate XVI.)	1
950	A magnolia bud on which is a gold lacquer wasp	1
951	A well-carved figure of Hotei, dressed in a green robe, signed <i>Shomei</i> (Plate XVI.)	1
952	A figure of an oni resting against a tree stump	1
953	A nice figure of a wrestler on parade, seal <i>Masakiyo</i> (Plate XVI.)	1
954	Two monkeys, each with one long arm, and a peach	1
955	A finely-carved figure, Hotei and boy, signed <i>Ikkosai</i> (Plate XVI.)	1
956	A long figure of a peasant with sheath of mushrooms	1
957	Sage in a boat, using a dragon kakemono as a sail, coloured, signed <i>Gyokuzan</i> (Plate XVI.)	1
958	Octopus-headed Rinjin attendant with the lucky ball	1
959	A wood, ivory and coloured seated Jurojin and crane, signed <i>Hideyuki</i> (Plate XVI.)	1
960	A fine long figure of a sennin with staff (slightly a.f.), signed <i>Riukin Sokei</i>	1
961	Komachi, as an old woman reposing on a rock	1
962	Oni peeping over a screen, watching Shoki sharpening his sword, signed <i>Yasusada</i> (Plate XVI.)	1
963	Kinko riding on a carp, reading a makimono, signed <i>Masat- sugu</i>	1
964	A finely lacquered (gold) ivory figure of a Ran-rio dancer, signed <i>Shugyoku</i> (Plate XVI.)	1
965	An ebony and ivory Colombo diver lying on a coral rock, pulling out from under it a bone octopus	1
966	A well-carved group of five boys fighting, various toys, etc., signed <i>Ono Riunio</i> (Plate XVI.)	1



LOT		
967	A figure of a Dutchman with bow and arrow, signed <i>Okakoto</i>	1
968	A well-carved small group of the Rokkasen, signed <i>Hakun-sai</i> (Plate XVI.)	1
969	Daruma stretching himself and bursting through his clothes, signed <i>Gyokuzan</i>	1
970	Standing Shoki holding an oni by his ears, signed <i>Kiriusai</i> (Plate XVII.)	1
971	A fine group of two interwoven snakes	1
972	A figure of Miura-no-Osuke in court dress (Plate XVII.)	1
973	Ashinaga and Tenaga with a fish, signed <i>Minkoku</i>	1
974	An old figure of Kwanya with halberd, signed <i>Riukie</i> (Plate XVII.)	1
975	A group of numerous shishimai dancers, musicians, etc., signed <i>Tomochika</i>	1
976	A figure of a Dutchman holding a boy in his arms (Plate XVII.)	1
977	An old figure of a caparisoned horse	1
978	A long figure of a Dutchman, coral button to his coat, carrying a hare on his pistol (Plate XVII.)	1
979	A group of Kwanyu and Cohi, signed <i>Tomochika</i>	1
980	An old figure of Gama Sennin with two frogs (Plate XVII.)	1
981	A double mask, Okame and a tengu, signed <i>Masahiro</i>	1
982	A long old figure of Kwanyu carrying his halberd (Plate XVII.)	1
983	The octopus-headed attendant of Riujin with the lucky jewel, signed <i>Takahiro</i>	1
984	A long figure of a foreigner with fan and scarf (Plate XVII.)	1
985	Shishi and ball, signed <i>Shigemasa</i> ; group of puppies, signed <i>Miozan</i> ; tortoise on rock, signed <i>Ikko</i>	3

END OF FOURTH DAY'S SALE.

# FIFTH DAY'S SALE.

FRIDAY, MARCH 12th, 1926,

AT 1.30 P.M. PRECISELY.

## Jōryū.

LOT		
986	An old group of Sotoba Komachi (Plate XVIII.)	1
987	A group of an elephant, tiger and shishi, signed <i>Ikkosai</i>	1
988	A small group of Kidomaru under the ox skin (Plate XVIII.)	1
989	A finely lacquered and coloured Shojo dancer, signed <i>Issai</i>	1
990	An old long figure of Kwanyu with halberd (Plate XVIII.)	1
991	A nicely carved group of a shishi and pup	1
992	A small group depicting the Tama-no-Maye story, signed <i>Nagayuki</i>	1
993	A nicely carved seated figure of a sage (Plate XVIII.)	1
994	A figure of a smiling man with large hat	1
995	A square, carved and pierced with numerous tigers, with a fine inscription on top, signed <i>Genosai</i> , aged 72, dated <i>Meiji II.</i>	1
996	Shoki with captured oni, another oni on his hat looking through a crack (Plate XVIII.)	1
997	A kappa being nipped by a crab, and his finger caught in a clam shell	1
998	An old figure of a reposing foreigner with fan (Plate XVIII.)	1
999	A group depicting Momotaro and his animal warriors attacking the ogres	1



## LOT

1000	A small group of a boy with coral and ivory toy Daruma, signed <i>Jugyoku</i>	1
1001	A long old figure of a sage with chrysanthemum, and boy on his shoulder (Plate XVIII.)	1
1002	A finely carved landscape, depicting various Yamabushi in the mountains, signed <i>Kwaigyokusai</i>	1
1003	An old figure of a sage with a scroll (Plate XVIII.)	1
1004	A group of a nio, a noble, and a beggar, signed <i>Ikkosai</i>	1
1005	An old figure of a hunter with bow and arrow (Plate XVIII.)	1
1006	A small group of two boys playing chess, signed <i>Nagamitsu</i>	1
1007	An old figure of a beggar with disfigured face (Plate XVIII.)	1
1008	Oni carrying Shoki on his shoulder, signed <i>Tsunekatsu</i>	1
1009	A long figure of Gama Sennin and his frog (Plate XVIII.)	1
1010	Benten on dragon, and Tokimasa, signed <i>Shounsai</i>	1
1011	An old figure of a boy with fan	1
1012	Jurojin, stag and boy, signed <i>Joriu</i> ; the Disappointed Rat Catcher, signed <i>Masakazu</i>	2
1013	A nicely carved figure of a squatting hare, signed <i>Ranichi</i>	1
1014	Chokwaro and his horse emerging from his gourd, signed <i>Gyokusai</i>	1
1015	An old figure of a dog with ball, inlaid spots	1
1016	Asahina and Soga-no-Goro episode	1
1017	Moso tying two bamboo shoots to his axe, signed <i>Shin</i>	1
1018	A seated kylin looking upwards	1
1019	A mounted figure of a warrior	1
1020	Momotaro and his animal attendants in boat, signed <i>Tomochika</i>	1
1021	A well-carved seated monkey with shishimai mask, signed <i>Seimin</i>	1
1022	A seated cow and calf, signed <i>Tomotada</i>	1
1023	Boy crawling on the ground, with saucer on his head, signed <i>Gasho</i>	1

## LOT

1024	A champion wrestler in the introduction pose	1
1025	Shishi climbing on to a large and coloured lacquer bowl	1
1026	Seated figure of a stonemason; the Disappointed Rat Catcher, signed <i>Okakoto</i>	2
1027	Well-carved group of two monkeys fighting with an octopus, signed <i>Issai</i>	1
1028	An ebony and ivory figure of a boy with a mirror, Shibayama inlay	1
1029	Seated figure of an oni painting a fan, signed <i>Hokwan</i>	1
1030	A nicely carved group of three rats, signed <i>Yoshinaga</i>	1
1031	A group of Watanabe carrying the witch, signed <i>Masaharu</i>	1
1032	A shishi emerging from a hole in the rocks	1
1033	A horse and a bucket, depicting the story of the Strong Woman, Iga no Tsubone, signed <i>Anraku</i>	1
1034	A small landscape, signed <i>Masaaki</i> ; and two puppies playing, signed <i>Narimitsu</i>	1
1035	Monkey with chestnut, youngster with persimmon, signed <i>Seimin</i>	1
1036	Seated sage holding large peony, out of which peers another sage	1
1037	A small figure of a seated man sharpening a saw	1
1038	Seated oni with drum, signed <i>Mitsushige</i> ; Gama Sennin; two grooms with horse, signed <i>Shugetsu</i>	3
1039	A small seated suisei, signed <i>Ransui</i>	1
1040	A small group depicting the Tama-no-Maye story, signed <i>Tomochika</i>	1
1041	Three birds seated on a jakago	1
1042	A small group of the animals of the Zodiac, signed <i>Ikko</i>	1
1043	An old figure of a sage with chrysanthemum and bundle of faggots	1
1044	Various pilgrims around the shrine of Amida,, signed <i>Kiusai</i>	1
1045	A small coloured and inlaid figure of Okame, signed <i>Gyokuzan</i>	1
1046	An old bone figure of Gama Sennin and two frogs	1



LOT		
1047	A small group of K-vanyu and Chohi, signed <i>Tomochika</i>	1
1048	An ebony Colombo diver with branch of coral under the waves, signed <i>Minkoku</i>	1
1049	A well-carved group depicting Kikujido, signed <i>Kagetoshi</i>	1
1050	A small figure of a seated hare with persimmon	1
1051	Hotei painting a face on his stomach, and boy	1
1052	Standing figure of a horse grazing	1
1053	Two oni wrestling with Shoki as umpire, signed <i>Tomomasa</i>	1
1054	Numerous Korean boys on and around an elephant, signed <i>Chikuyosai</i>	1
1055	Cooper at work on portion of a tub, signed <i>Rantei</i>	1
1056	Hunter and warrior with captured fox	1
1057	Eagle with captured fox, signed <i>Masachika</i>	1
1058	A boy asleep on a seated cow (R.C. 76)	1
1059	An old figure of Gama Sennin and two frogs	1
1060	A man carrying a huge gourd on his shoulder	1
1061	Kinko Sennin on a carp	1
1062	Daikoku and Ebisu as dancers; and old figure of a female Awabi dancer; both slightly A.F.	2
1063	A crouching figure of a tiger, signed <i>Masanao</i>	1
1064	A long figure of a Dutchman carrying a monkey and holding his beard	1
1065	A quaint figure of an oni with large club, signed <i>Masanobu</i>	1
1066	Ono-no-Tofu with umbrella, riding on a frog's back, signed <i>Otomitsu</i>	1
1067	Jurojin, boy and stag, signed <i>Kikugawa</i>	1
1068	Sennin seated on a rock; Sotoba Komachi	2
1069	A nicely carved figure of a man with a gourd, signed <i>Unshu</i>	1
1070	Small group of Jurojin and Okame, signed <i>Homin</i>	1
1071	A clam shell partly opened, interior carved figures, houses and waterfall, signed <i>Yoshitomo</i>	1

## LOT

1072	Miura-no-Osuke, Urashima, and Takenouchi on the back of a minogame	1
1073	A small coloured and inlaid figure of a boy bowing to the ground, signed <i>Tomoyuki</i>	1
1074	A small group of Handaka Sonja and his dragon, signed <i>Minkoku</i>	1
1075	Small figure of Benten and a hare; unusual subject	1
1076	Figure of a boy having hit his toe against a pail in a stream, signed <i>Tamakazu</i>	1
1077	An old figure of Chinnan and his dragon	1
1078	A shell, out of which appears an octopus	1
1079	Jurojin with kakemono and minogame, signed <i>Harushige</i>	1
1080	Boy carrying a shishimai dancer on his shoulder	1
1081	Seated ox with straw mat on his back, signed <i>Kagetoshi</i>	1
1082	The story of Yasumasa and his would-be murderer	1
1083	An old figure of Tekkai Sennin	1
1084	A small figure of Raiden, cleaning a mokugyo, signed <i>Tomomasa</i>	1
1085	A well-carved peach, depicting a chariot and figures of Gods, etc., in the clouds, signed <i>Kwaigyokusai Masatsugu</i>	1
1086	A nicely carved cock on a drum	1
1087	A clam shell, the interior finely carved with figures and landscape, bridge, etc., signed <i>Kwaigyoku</i>	1
1088	A small figure of a pup with collar and bell	1
1089	A small figure of a diver with perforated ball, signed <i>Gyoku</i>	1
1090	Cow boy asleep beside a seated cow, signed <i>Tomosada</i>	1
1091	A coral diver with huge branch of coral	1
1092	A heart-shaped box, carved hare and tokusa, opening and showing finely carved fowls, signed <i>Kwaigyokusai Masatsugu</i>	1
1093	A small well-carved group of boy flautist on cow, signed <i>Ryuko</i>	1
1094	A pine cone opening and depicting sages behind a pine tree, cranes, etc., signed <i>Kwaigyokusai</i>	1



## LOT

1095	A nicely carved boy flautist on a seated cow, signed <i>Kwaigyokusai</i> , seal <i>Masatsugu</i>	1
1096	A perforated ball, carved with the animals of the Zodiac, signed <i>Kwaigyokusai Masatsugu</i>	1
1097	Three blind men fighting, signed <i>Ikkosai</i> ; a small quail; pouch, fruit, etc., signed <i>Gyokuteisai</i>	3
1098	An old figure of a standing lady holding a peach	1
1099	An old figure of a shell diver with an eel	1
1100	Passengers and horse in ferry boat, signed <i>Ono Shomin</i> ; three blind men and clam shell, signed <i>Masayuki</i> ; two boys neck wrestling, signed <i>Toriu</i>	3
1101	Jurojin, boy and stag, signed <i>Kikugawa</i>	1
1102	An egg-shaped box, exterior finely carved Daimyo procession, opening and showing a horse race in progress, signed <i>Kagetoshi</i>	1
1103	An octopus on a large rock of coral	1
1104	Small seated boy tying on his hat	1
1105	A carving of a palace, and numerous small figures, signed <i>Kagetoshi</i>	1
1106	Jurojin seated beside a jar, signed <i>Horiu</i> ; two ladies stirring food in brazier, signed <i>Ikkosai</i>	2
1107	Chokwaro's horse and gourd, signed <i>Ranko</i> ; three quails, signed <i>Masamine</i>	2
1108	Urashima; Daruma with two Daruma toys, signed <i>Tomochika</i> ; Kwanyu mounted, signed <i>Nagatsune</i>	3
1109	Hamaguri shell partly opened, interior finely carved fisherman, net, house, etc., signed <i>Kwaigyoku</i>	1
1110	Hamaguri shell opening, the interior finely carved house and people, signed <i>Kagetoshi</i>	1
1111	A small figure of Shakamuni with silver lacquered robe, signed <i>Yasuaki</i>	1
1112	Two manju etched on both sides with very minute poems	2
1113	Large ditto, finely carved and undercut with the Forty-Seven Ronin, attacking the castle, etc., signed <i>Somin</i> (R.C. 80)	1
1114	Manju, carved with Sojobo and Yoshitsune, signed <i>Mitsutama</i>	1

## LOT

1115	Two others, inlaid hare and chrysanthemums, and hobby horse and cherry blossom, both signed <i>Shibayama</i>	2
1116	Two others, carved Shimbutsu killing the carp, signed <i>Ryokoku</i> ; two Tennin in clouds, signed <i>Masatsugu</i>	2
1117	An old carving of a mermaid in waves holding a carp	1
1118	A well-carved group of three tortoises, signed <i>Mitsuhiro</i>	1
1119	Eguchi on elephant, and Monju on shishi, signed <i>Shinsai</i>	1
1120	An old figure of a rat; frog on mushroom, signed <i>Seiraku</i>	2
1121	An old figure of Hotei, his bag on his head	1
1122	Ebisu climbing on to the back of a fugu fish, signed <i>Masatomo</i>	1
1123	Small group of two rats, signed <i>Mitsuaki</i> ; two puppies	2
1124	The Shichifukujin in a boat, signed <i>Yoho</i> ; small boy with fishpond	2
1125	Small figure of an elephant with Shibayama trappings, signed <i>Isshin</i>	1
1126	Small figure of a Jo dancer, ebony mask, signed <i>Mitsuhiro</i> ; Jiso playing to Yemma O, signed <i>Harutomo</i>	1
1127	A nice figure of a Sambaso dancer, signed <i>Chikuunsai</i> ; Hotei, signed <i>Rantei</i>	2
1128	A roasted chestnut, partly open; wood and ivory figure of boy with dog	2

## Wood.

1129	An old figure of a Samurai; another of a blind man groping amongst shrubs	2
1130	Dog-headed karashishi, and an elephant-headed ditto	2
1131	Monkey on tiger; monkey and mermaid; oni and nio, signed <i>Yoshinaga</i>	3
1132	Ashinaga and Tenaga seated; Hankwai carrying a door, signed <i>Masakazu</i>	2
1133	Raiden pulling clouds out of his pouch; Raiden seated on clouds, signed <i>Yoshiyuki</i>	2
1134	Snarling wolf with hare, signed <i>Okatomo</i> ; monkey scratching	
1135	A curious figure of a ghost, signed <i>Sanshu</i> ; one-eyed priest ghost	2



LOT		
1136	Curious figure of a shishi; another curious figure, shishi with ball	2
1137	A wood and ivory carving of Kiyohime, signed <i>Yeishu</i>	1
1138	An old figure of Kwanyu holding his beard	1
1139	Finely carved figure of Chinnan and his dragon, signed <i>Toyokazu</i>	1
1140	Raijin sleeping on the clouds, signed <i>Hoku</i> ; woman with egg basket, man testing eggs, signed <i>Shohaku</i>	2
1141	Large carving of a shishi with ball, signed <i>Yusai</i> ; another, similar subject	2
1142	Sage holding his head; peasant with toothache	2
1143	Okame, ivory face; wall-eyed man lifting stone, signed <i>Gyokkei</i> ; seated goat	3
1144	Temple watchman with dilapidated umbrella; Tekkai Sennin with gourd, signed <i>Toyomitsu</i>	2
1145	An old figure of a Sennin and child	1
1146	Reposing oni and rat; Hotei with puppet doll	2
1147	A curious old figure of a sleeping mermaid with the jewel	1
1148	A well-carved figure of a goddess holding a basket	1
1149	Benten and a nio hand wrestling on a sandal, signed <i>Chikuto</i> ; Shojo dancer, ivory mask, signed <i>Isshosai</i>	2
1150	A seapine figure of a man seated on a mat, signed <i>Unzan</i>	1
1151	Crouching oni picking beans off himself	1
1152	A very fine yellow amber oni mask, signed <i>Shoju</i>	1
1153	Shishi and pup; monkey and youngster, signed <i>Mitsuhiro</i> ; tengu in egg, signed <i>Shuzan</i>	3
1154	An old figure of Tekkai Sennin leaning on a crutch	1
1155	A boxwood carving of Gama Sennin; woman pounding rice, and child, signed <i>Kikutsune</i>	2
1156	Shoki with oni on his hat; snarling tiger and monkey, signed <i>Masayoshi</i>	1
1157	A small finely carved group of ten rats, signed <i>Shoo</i>	1
1158	A nice carving of Ono-no-Komachi, signed <i>Masakazu</i>	1

## LOT

- |      |   |   |
|------|---|---|
| 1159 | A very curious shaped shishi  | 1 |
| 1160 | Yamabushi blowing a conch whilst seated in a large conch shell, signed <i>Shigemitsu</i>                        | 1 |
| 1161 | Okame dancer, ivory mask, signed <i>Hidetomo</i> ; dancer with ivory mask; two other dancers with ivory details | 3 |

## Japanese Wood Carvings.

- |      |   |    |
|------|---|----|
| 1162 | A small kogo, carved as tortoise pyramid, signed <i>Tadakazu</i>  | 1  |
| 1163 | Bamboo pouch, inlaid pottery and lacquered plant; small tray and eleven ivory chestnuts   | 13 |
| 1164 | A finely carved 5½in. pyramid of tortoises, signed <i>Tadakazu</i>  | 1  |
| 1165 | A 4½in. figure of Hotei holding a tama  | 1  |
| 1166 | A 5in. spill vase, carved Chinese landscape in high relief  | 1  |
| 1167 | A curious old libation cup, shaped as a shishi  | 1  |
| 1168 | A 10½in. long group, dragon-headed fish attacking five monkeys on a raft, signed <i>Hogaku</i>  | 1  |
| 1169 | An 8in. x 10in. wide group of two hares, signed <i>Hidari Take</i> ; an old piece   | 1  |
| 1170 | A 6½in. oval box, the two portions finely carved with masks of Okame and oni, the latter with ivory details and bone horns, signed <i>Toshinobu</i> | 1  |
| 1171 | A 3ft. 8in. articulated snake   | 1  |
| 1172 | A doctor's sword, carved Hannya mask, eyes inlaid, signed <i>Hirakawa Kazunori</i> , aged 55 (ex. Trower)   | 1  |

## Bronzes, Etc.

- |      |   |    |
|------|---|----|
| 1173 | Three small carved boxes, three small brush cases; shibuichi hairpin and paper weight                                     | 8  |
| 1174 | A perforated octagonal box; peach-shaped writing box; squat jardiniere; Thibetan charm case                               | 4  |
| 1175 | A fine 6in. long water pot, shaped as a Dog of Foh, flat gold and silver wire inlay, said to be by <i>Keen Wang, Ming</i> | 1  |
| 1176 | Thirteen small seals, with animal tops  | 13 |



## LOT

1177	A small tortoise; ditto warrior; man reading; cockerel, etc.	6
1178	Small Dog of Foh incense-burner; 7½in. pottery ditto, imitating bronze	2
1179	A 6½in. Japanese oni; and a curious 3½in. box with archaic inscriptions	2
1180	Seven brass libation cups, eight other pieces, various	15

## Chinese Paintings on Glass, Etc.

1181	A 35in. x 27in. framed picture, finely painted with ladies outside a house	1
1182	A pair to the above	1
1183	A 34½in. x 22½in. framed picture, similar decoration	1
1184	A pair to the above	1
1185	An 18in. circular framed ditto, ladies outside a house, landscape, etc., mounted on a stand, in all 42in. high	1
1186	A pair to the above	1
1187	A fine 26in. x 18in. screen, carved and coloured ivory, lacquer, etc., mythological people and landscape. In nicely carved blackwood frame and support	1
1188	A 26in. x 28in. framed blue satin panel, embroidered with rice-field, etc., scenes	1
1189	A 13½in. x 17in. <i>Persian tile</i> , decorated mounted hunters, deer, etc., on blue ground. In wood frame	1
1190	A fine 31in. x 21in. <i>Owari blue and white porcelain plaque</i> , decorated nobleman and lady and girls drawing water (Illus. in colours, Bowes "Ceramic Art"). Framed	1
1191	A 3ft. 6in. x 19in. embroidered Persian panel with base of gold (metal) sequins, decorated with a mosque, inscription, etc., in gold thread and coloured beads. Framed	1
1192	A similar piece, only smaller	1
1193	Another, similar technique, a human-headed winged quadruped	1

## Japanese Prints, Paintings, Etc.

### LOT

1194	"The Hundred Poet" series, ladies in boat gathering lotus leaves, poem by Bunya Yasuhide, signed <i>Hokusai</i> . Framed	1
1195	A framed triptych, by <i>Kunisada</i> ; two others by <i>Kunisada</i> , framed; "Hundred Views of Yedo" series, Kiba, Fukugawa, signed <i>Hiroshige</i> , framed	3
1196	A parcel of coloured photos of Japan, by Ponting, and three pencil drawings by <i>W. T. Wood</i> , etc.	
1197	A book of coloured paintings on silk depicting peasant life, flowers, fish, etc.	1
1198	A parcel of twenty-three Japanese water colour drawings, landscapes, figures, etc., by modern artists	23
1199	A similar lot of twenty	20
1200	A similar lot	20
1200	A similar lot	20
1202	A similar lot	20
1203	A similar lot	20
1204	A similar lot	20
1205	A similar lot	20
1206	Ditto, seascape and two figures, framed	3
1207	A large framed ditto, peasant's hut, signed <i>Yamamoto</i>	1
1208	Seven prints by <i>Hiroshige</i> and thirty-three others, various	40
1209	Fifty-two Japanese prints by various artists	52
1210	A fine Chinese scroll ( <i>Chuan</i> ), "The Social Gathering at the West Garden," drawn in gold on blue silk, dated 1785. Inscription by Kuo Shang Hsin gives Li Po Shih as the artist	1
1211	Silk kakemono, figures in house and garden; another, flowers, embroidered pheasant, etc.	2



## Maria.

### LOT

- |      |   |   |
|------|---|---|
| 1212 | <i>White shibuichi</i> , rolling incense-burner, spherical shape, entirely in openwork, charged with circular floral rosaces of kiri, iris, etc., picked with enamels (R.C. 48)   | 1 |
| 1213 | A $4\frac{1}{4}$ in. <i>white shibuichi koro</i> , four-lobed, chased in relief and inlaid cloisonne decoration of goddess and clouds   | 1 |
| 1214 | A 5in. squat <i>white shibuichi bowl</i> , dragon in high relief  | 1 |
| 1215 | A $2\frac{3}{4}$ in. ditto box and cover, chased all over with chrysanthemums, gold centres, cover surmounted by a cockerel, signed <i>Setsuho Hidetomo</i>   | 1 |
| 1216 | A $4\frac{1}{4}$ in. <i>flat circular soapstone shrine</i> , carved with sixteen Boddhisattvas in four rows, these surrounded by innumerable lesser personages in minute carving. This was dedicated to the ancestors of Prince Kung Ching Wang Pu Wei (Manchu). In chased brass case | 1 |
| 1217 | A sandalwood shrine, finely carved with Amida and two attendants on centre panel, and Eguchi no Kimi and Monju Bosatsu on interior of door panels   | 1 |
| 1218 | An ivory pocket shrine, interior finely carved with Kujaku Mio O  | 1 |
| 1219 | A black lacquer shrine containing standing Amida and nine other deity attendants  | 1 |
| 1220 | <b>A unique 31in. Komai, Damascene Pagoda</b> of five stories, four of which contain small drawers, there being in all twenty-five drawers, the piece finely decorated all over with various flowers, signed <i>Komai</i> . In a mahogany showcase                                    | 1 |
| 1221 | A $5\frac{1}{2}$ in. ditto cabinet, decorated landscapes, Miyajima, Katada, etc., fowls and flowers, nine drawers in all, signed <i>Komai</i>   | 1 |
| 1222 | A $2\frac{1}{2}$ in. circular squat drum-shaped kogo, phoenix and Genjimon decoration, signed <i>Komai</i>  | 1 |
| 1223 | A set of six vases, showing the method of manufacture of cloisonne  | 1 |
| 1224 | A <i>fine collection of twenty-one kozuka blades</i> , being finely engraved and chased with poems, figures, etc., by various artists. Mounted in plain scabbards   | 1 |

LOT		
1225	Seventy-three metal ojime, various decorations	73
1226	Another lot of thirty-nine ojime	39
1227	Two aventurine pendants; a lump of aventurine; shell carved with lady	4
1228	A 14½in. Japanese clock, grandfather clock shape, with lead weights	1
1229	A small oblong Japanese clock, brass mounts	1
1230	An opium pipe; back scratcher; and a Japanese dagger, without scabbard	3
1231	A white shibuichi grasshopper on a small horn; a white shibuichi praying mantis	2
1232	A small articulated iron crayfish	1
1233	A ditto figure of a grasshopper	1
1234	A ditto figure of a praying mantis	1
1235	An old white Canton condiment set, figures and landscape, in box	1

### Chinese Rugs.

1236	A large rug, blue and light yellow design on putty coloured base	1
1237	Small rug, yellow, green and blue design on brick	1
1238	Ditto, blue design on putty colour, red and blue border	1
1239	Ditto, light blue and yellow on crimson	1
1240	Ditto, yellow and red design, blue	1
1241	Two small squares, coloured designs on blue and light brick red	2

END OF SALE.





# Periodical Sales.

POSTAGE STAMPS,

ANTIQUE CHINA, SILVER PLATE, &c.

OIL PAINTINGS AND WATER COLOURS,

COLOURED PRINTS, ENGRAVINGS, &c.

COINS, WAR MEDALS AND DECORATIONS.

OLD CHINESE AND JAPANESE CURIOS, &c.

---

Terms : 12½ per cent. ; minimum charge on any lot, 2/6.

---

Entries can now be received.











34



27



33



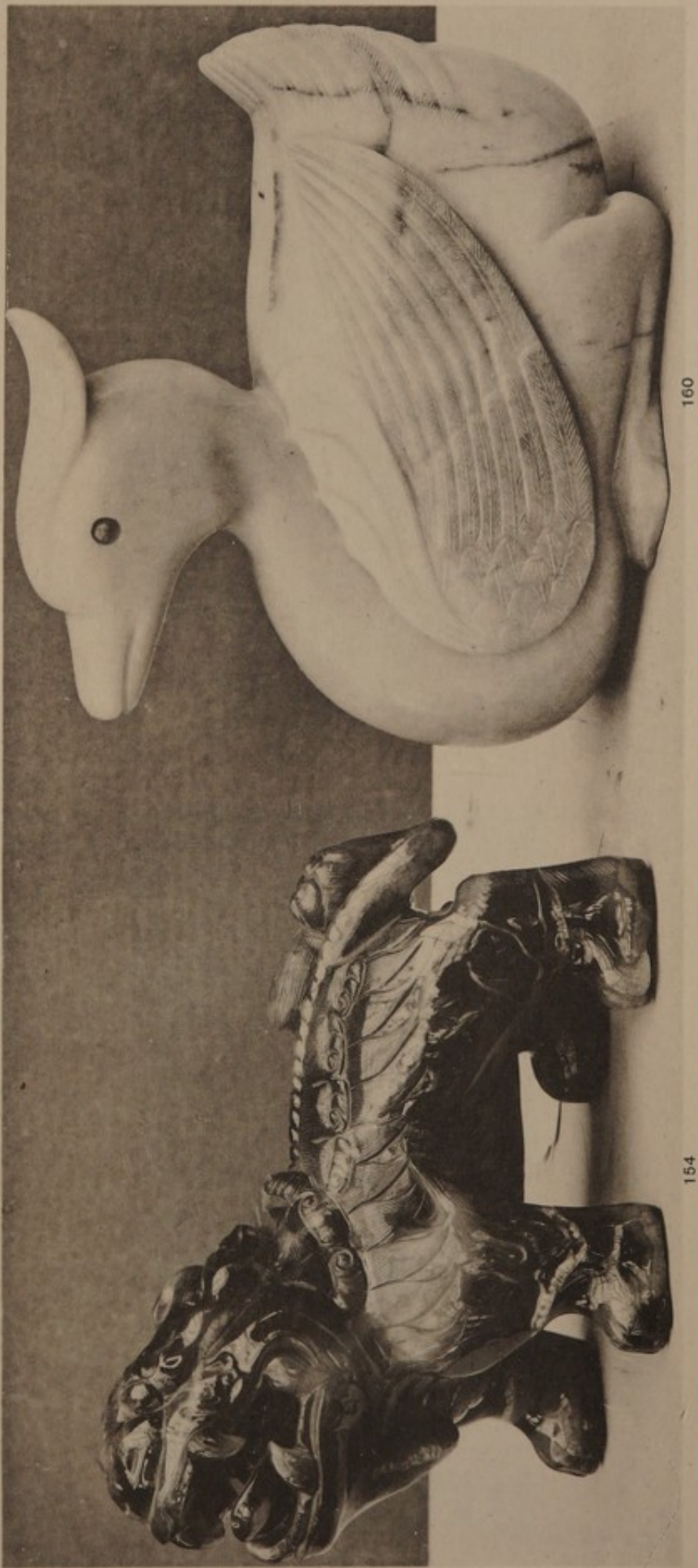
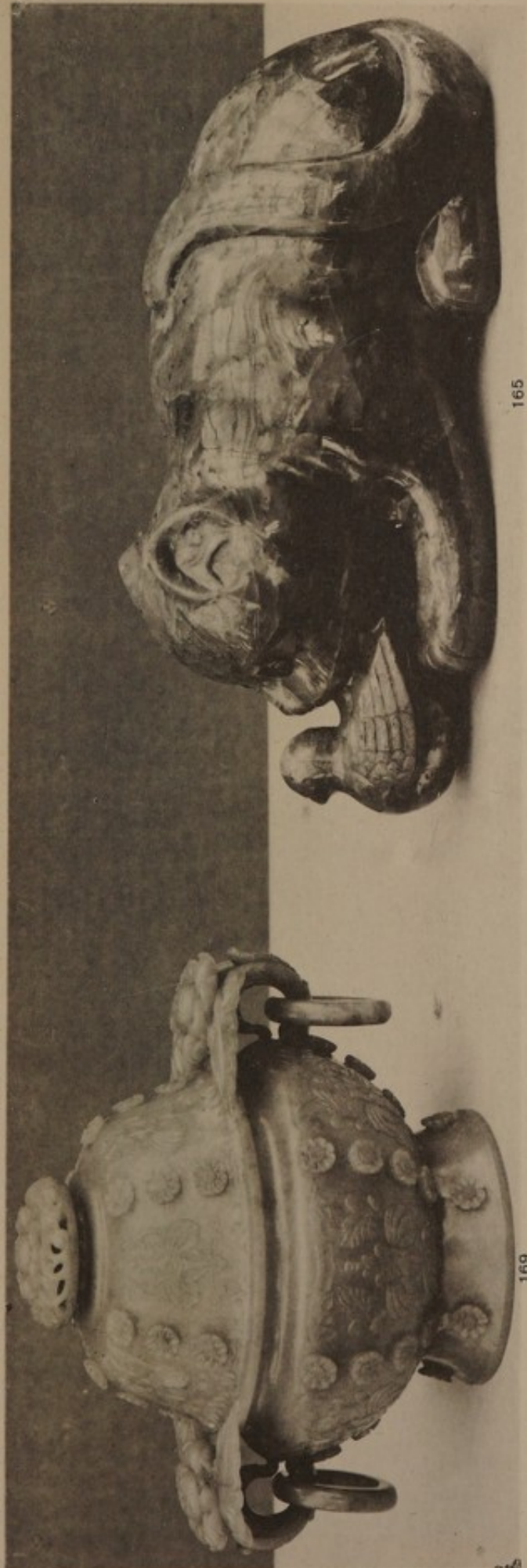
30



31













148



146



151



139







196



202







205



197



198







234

284







251



301



268

292



282





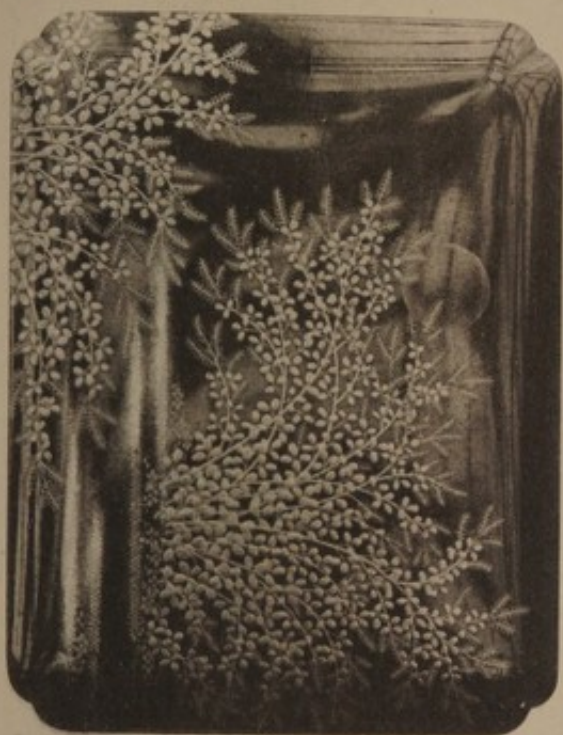


409





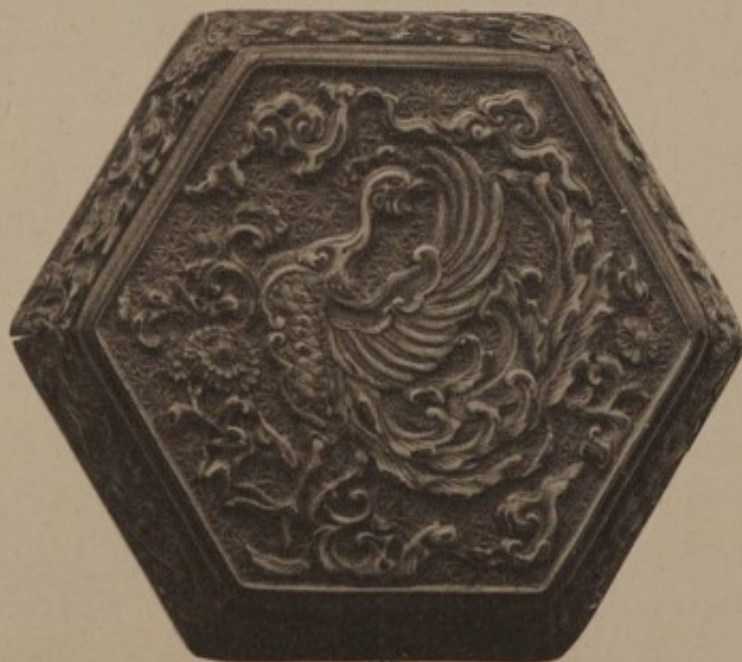




432



423



427



402



425



429







690



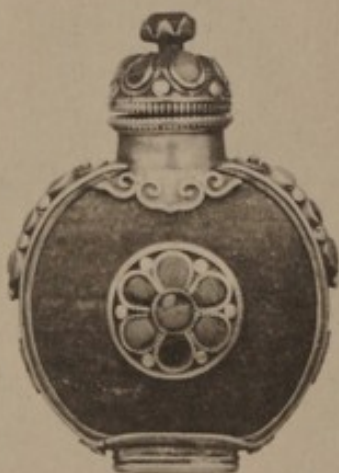
533



693



509



521



530



485



527



524







518



515



551



545



542



539



536



688



548







668



512



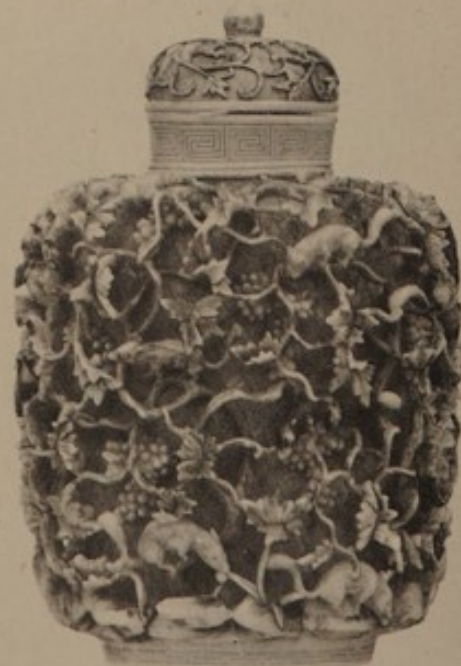
679



683



674



671







788



783



778



775



770



766



762



759



751



755













930



928



926



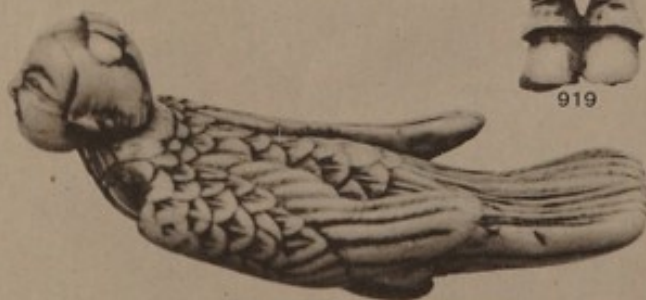
922



919



911



915



897



900



902



905



908







968



966



964



962



957



959



955



953



951



948



949



942



945



934



937



939







978



980



982



984



976



974



972



970





# THE ARGYLL GALLERY

---

## NOTICE.

---

### Auction Sales

Of Postage Stamps are held on alternate Tuesdays and  
Wednesdays each Month throughout the Season.

NEXT SALE     ...     ...     ...     March 16th & 17th.

---

Engravings, Pictures, Plate, Jewellery, &c.

NEXT SALE     ...     ...     Date will be duly advertised.

---

Coins and Medals.

NEXT SALE     ...     ...     Date will be duly advertised.

---

Oriental Art.

NEXT SALE     ...     ...     Date will be duly advertised.

---

Open daily for the reception of Fine Art Property,  
Jewellery, Plate, China, Coins, Medals, Stamps,  
Furniture, etc.

---

Particulars of these Sales will be found advertised every Saturday in the  
"Times" and "Daily Telegraph."

---

**VALUATIONS MADE FOR PROBATE AND FIRE INSURANCE.**

TERMS ON APPLICATION.



# Messrs. Glendining & Co., Ltd.

CONDUCT AUCTION SALES OF  
SILVER, JEWELLERY, ANTIQUE  
FURNITURE, VIOLINS

---

War and Commemorative Medals - Coins  
Postage Stamps - Fine Art - etc.

---

WEEKLY THROUGHOUT THE SEASON.

PRICED COIN AND MEDAL CATALOGUES, 2/- each, post free.  
AND STAMPS, 2/- each, post free.

*CASH ADVANCES, IF REQUIRED,  
ON LOTS SENT FOR  
ABSOLUTE SALE.*

Lots to be included in these Sales  
should be sent in as soon as possible.

*PROMPT SETTLEMENTS.*

---

**GLENDINING & CO., Ltd.**  
7, ARGYLL STREET, OXFORD CIRCUS, W. 1

---

*Purdy & Son, The Triangle Printing Works, Bournemouth.*