

Sales catalogue: Glendining

Publication/Creation

29-30 June 1922

Persistent URL

<https://wellcomecollection.org/works/kqepmxff>

License and attribution

This work has been identified as being free of known restrictions under copyright law, including all related and neighbouring rights and is being made available under the Creative Commons, Public Domain Mark.

You can copy, modify, distribute and perform the work, even for commercial purposes, without asking permission.



Wellcome Collection
183 Euston Road
London NW1 2BE UK
T +44 (0)20 7611 8722
E library@wellcomecollection.org
<https://wellcomecollection.org>



Telegraphic Address :
"NULLIFIED, LONDON."

Telephone :
GERRARD 4424.

MUSICAL
INSTRUMENTS.

FINE
ART PROPERTY.

JEWELLERY,
PLATE, CHINA.

MEDALS, COINS,
POSTAGE
STAMPS, ETC.

1922.



MESSRS.

Glendining

AND CO., LTD.

AUCTIONEERS,

7, Argyll Street,
Oxford Circus, W.1.

Adjoining Oxford Circus Station.

Catalogue

OF A FINE COLLECTION OF

Inro, Netsuke and Lacquer,

the Property of
Brig.-Gen. G. V. Clark, C.M.G., D.S.O.

and

CHINESE BUCKLES,

the Property of a Lady.

Days of Sale :

First Day : Thursday, June 29th, Lots 1 to 38

Second Day : Friday, June 30th, Lots 39 to 266

At 3.30 p.m. on 29th.

1.30 p.m. on 30th.

Telephone
No. GERRARD 4424.

Telegraphic Address
"NULLIFIED, LONDON"

Messrs. Glendining & Co., Ltd.

Auctioneers, Surveyors, Land & Estate Agents,

No. 7, ARGYLL STREET, OXFORD CIRCUS, W. 1.

(Adjoining Oxford Circus Tube Station).

SALES BY AUCTION of PROPERTIES, GROUND RENTS,
REVERSIONS held at the MART, E.C.

BUSINESS PREMISES, HOUSES, FLATS, &c.; To be Let
or Sold.

VALUATIONS FOR PROBATE AND MORTGAGE PURPOSES.
SPECIAL BRANCH for RAILWAY, SCHOOL BOARD
and other COMPENSATION CLAIMS.

SANITARY SURVEYS AND PLANS PREPARED.

FURNITURE SALES held in Town or Country, and at their
spacious Galleries at No. 7, ARGYLL STREET, W.

SURVEYS OF DILAPIDATIONS.

PROPERTIES SURVEYED and REPORTED ON in Town
and Country.

REGISTER OF PROPERTIES, SHOPS, FLATS, &c., in which
particulars are inserted free of charge.

**PARTICULARS OF FREEHOLD AND LEASEHOLD GROUND
RENTS FOR SALE, MORTGAGES, etc.,** should be sent to
Messrs. GLENDINING & CO., LTD., who have always
Clients waiting to invest in these classes of security.

Particulars of Properties, Shops, etc., sent Free on Application.

FURNITURE, PICTURE and ART SALES are held periodically
at the Galleries.

No. 7, ARGYLL STREET, OXFORD CIRCUS, W. 1

TERMS ON APPLICATION.

Messrs. Glendining & Co., Limited,

7, ARGYLL STREET, OXFORD CIRCUS, W. 1.

CATALOGUE

OF A

Fine Collection of

Inro, Netsuke and Lacquer

THE PROPERTY OF

Brig.-Gen. G. V. Clark, C.M.G., D.S.O.

and

Chinese Buckles,

the Property of a Lady.

For Sale by Auction

AT OUR GALLERIES,

7, ARGYLL STREET, OXFORD CIRCUS, W. 1,

ON

THURSDAY AND FRIDAY,

JUNE 29th and 30th, 1922,

AT 3.30 P.M. on 29th ; 1.30 P.M. on 30th.

On View Thursday, Friday and Saturday, (till 1 p.m.), June 22nd, 23rd
and 24th, and Mornings of Sale (until 12 noon).

PLEASE NOTE PLACE AND TIMES OF SALE.

CONDITIONS OF SALE.

- FIRST.—The highest bidder to be the buyer; and if any dispute arise between two or more bidders, the lot so in dispute shall be immediately put up again and resold, provided the auctioneer cannot decide the said dispute.
- SECOND.—No person to advance less than a 1s.; above five pounds, 5s.; and so on in proportion.
- THIRD.—In the case of lots upon which there is a reserve, the auctioneer shall have the right to bid on behalf of the seller.
- FOURTH.—The purchasers to give in their names and places of abode, and to pay down 5s. in the pound, or more in part of payment, or the whole of the purchase-money, *if required*: in default of which the lot or lots so purchased to be immediately put up again and resold.
- FIFTH.—Each lot is guaranteed genuine, but should any lot prove to be a forgery, or reprint, or wrongly described in the catalogue, the purchaser is at liberty to take or reject it, provided always that notice of such rejection be made and the lot returned within seven days from date of sale. This guarantee does not apply to collections of stamps or to mixed lots.
- SIXTH.—To prevent inaccuracy in delivery, and inconvenience in the settlement of the purchases, no lot can on any account be removed during the time of sale, and the remainder of the purchase-money must absolutely be paid on the delivery.
- SEVENTH.—Upon failure of complying with the above conditions, the money deposited in part of payment shall be forfeited; all lots uncleared within the time aforesaid shall be resold by public or private sale, and the deficiency (if any) attending such resale shall be made good by the defaulter at this sale.
- EIGHTH.—If any owner has placed a reserve on any lot, the auctioneers reserve to themselves the right to publish the fact and price at which it is reserved.
- NINTH.—Should any china bear trade marks which are not genuine the auctioneers are to have the right to erase such marks before delivering to the buyer.



CATALOGUE.

FIRST DAY'S SALE.

THURSDAY, JUNE 29th, 1922,

AT 3.30 P.M. PRECISELY.

The General Goland Clark Collection.

Juro.

LOT

- 1 Four cases, roiro, gold, bronze, black and red takamakiye and aogai decoration of Yorimasa and the Nuye, signed *Kajikawa*
- 2 Four cases, tsuishu, carved sages and landscape
- 3 Three cases, kinji, with gold, black and red togidashi decoration of two bullock carts, two boys, and two men fighting, signed *Shiomi Masakage* (Plate II., No. 16)
- 4 Three cases, roiro, gold, silver and red azaleas in togidashi, signed *Toyo*
- 5 Three cases, silver hirame on black, gold, silver and brown decoration of three sparrows in high relief, signed *Jokasai*
- 6 Four cases, rogin lacquer on roiro, with sumiye herbs of autumn, and mist and moon in gold fundame, signed *Kwansai* (Plate II. No. 18)
- 7 Four cases, red lacquer, decorated with a gold and silver hare in high relief, signed *Koma Kiuhaku*

1 9/10/-
1 2/10/-
1 12/-
1 7/-
1 3/-
1 12/-
1 4/10/-

LOT

- | | | | |
|-------|--|---|---------|
| 8 | Four cases, roiro, with the flowers of autumn in gold takamakiye, foil and aogai, nashiji interior (<i>Plate II., No. 21</i>) | 1 | 5/-/- |
| 9 | Four cases, gold poudre on roiro, decorated gold and silver togidashi river scene, house, etc., signed <i>Koma Yasutada</i> | 1 | 8/-/- |
| 10 | Four cases, mirror black and silver hirame, decorated gold hiramakiye cherry tree, pigeon in relief in mother-o'-pearl, another in relief on reverse in green, gold, silver and red takamakiye, signed <i>Yoyusai</i> | 1 | 5/-/- |
| 11 | Four cases, kinji, decorated in sumiye, green and red togidashi, with water fowls, iris, reeds, and water plants, signed <i>Fujiwara Shigekazu after Hoitsu Kishin (Plate II., No. 17)</i> | 1 | 16/-/- |
| 12 | Four cases, hirame and roiro, decorated gold takamakiye priest's pack and vine creeper, some leaves in aogai | 1 | 8/-/- |
| 13 | Three cases, roiro, gold and black takamakiye decoration of Benkei and Yoshitsune on the Gojo Bridge in the moonlight, signed <i>Toyo</i> | 1 | 8/10/- |
| 5. 14 | Five cases, mirror black, with tsuishu and gold Nio at temple entrance in high relief; reverse, gold togidashi temple, signed <i>Jitokusai Giokusan (Plate II., No. 19)</i> | 1 | 12/10/- |
| 15 | Three cases, roiro, black and gold takamakiye decoration of Rosei dreaming, his face seen through thin aogai fan, his dream represented in matt black on roiro, signed <i>Koma Yasumasa</i> | 1 | |
| 16 | Five cases, roiro, rogin togidashi cock with red comb; reverse, green and gold bamboo and spider, signed <i>Toyo</i> | 1 | |
| 17 | Four cases, Somada lacquer, painter under pine tree, having written character "kotobuki," throws same into the air (<i>Plate II., No. 22</i>) | 1 | |
| 18 | Three cases, kinji, decorated in gold, black, red and silver togidashi with the Rokkasen, signed <i>Kwansai</i> | 1 | |
| 19 | Four cases, hirame on brown, gold hiramakiye, house, archer and attendant. An old piece (<i>Plate II., No. 20</i>) | 1 | |
| 20 | Four cases, Jidai, nashiji base, decorated fans in gold takamakiye and aogai (17th century); four cases, ditto, gold takamakiye river and bridge, inlaid silver and shakudo (metals), Chorio and Kosekiko (17th century) | 2 | |

LOT

- | | | |
|----|---|---|
| 21 | Five cases, roiro, decorated Kwanyu, Komei, Chohi and others in gold hiramakiye and aogai and curtain in various coloured lacquers | 1 |
| 22 | Four cases, gold canvas pattern base, decorated cherry tree, flowers inlaid gold (metal), and three medallions representing first, third and ninth months, signed <i>Kajikawa</i> | 1 |
| 23 | Three cases, dark brown, gold and silver togidashi and aogai decoration of Toba and snow-capped bamboo, rinzu and hirame on risers, signed <i>Jokasai</i> | 1 |
| 24 | Four cases, roiro, decorated gold, copper, silver and tsuishu lacquers in relief with Shoki pursuing oni (early 18th century) | 1 |
| 25 | Two cases, large drum-shaped intro, carved dragons in relief, one with enamel tama, the other with porcelain seal, ivory manju, carved scholar, signed <i>Hojitsu</i> | 1 |
| 26 | Four cases, black on red, with impressed kiku flowers, the leaves in gold hiramakiye and aogai, nashiji interior, goat netsuke, signed <i>Tadamitsu</i> | 1 |
| 27 | Four cases, nashiji, gold takamakiye peacock on plum tree, eyes in tail feathers inlaid aogai | 1 |
| 28 | Three cases, dark brown, gold takamakiye and aogai decoration of Riko, signed <i>Jokasai</i> | 1 |
| 29 | Two cases, roiro, Shibayama inlay of peonies and kiku, diaper on sides in Somada style, manju inlaid fish, signed <i>Unzan</i> ; three cases, roiro, flowers, thistles, and butterfly inlaid aogai and porcelain and gold lacquer | 2 |
| 30 | Four cases, mura nashiji and mirror black, decorated two girls at well in gold, silver and red in relief, two cotton reels and war stars, signed <i>Kajikawa</i> | 1 |
| 31 | Three cases, black, butterflies and reeds in gold takamakiye and aogai, signed <i>Masatoshi</i> ; four cases, gold poudre and hirame on black, decorated tiger and waterfall in gold and silver takamakiye, signed <i>Jitokusai Giokusan</i> , kinji manju signed <i>Tachibana Giokusan</i> | 2 |
| 32 | Three cases, black, stag, maple and lantern in gold takamakiye, pewter and aogai; four cases, black, three warriors fighting under plum tree in gold, black and red in relief | 2 |

LOT

- | | | |
|----|---|---|
| 33 | Three cases, gold, Korin style decoration of Kikujido; three cases, similar technique, gentian, ferns and grasses | 2 |
| 34 | Three cases, shibuichi (metal), engraved and gold honzogan, peonies, signed <i>Goto Mitsuyoshi</i> ; ditto, manju, farmer with lantern, signed <i>Chikanobu</i> ; ojime, signed <i>Kazumori</i> | 1 |
| 35 | Three cases, red-brown lacquer, decorated cranes in negoro lacquer, aogai and pewter, signed <i>Toyo</i> | 1 |
| 36 | Four cases, hirame on black, gold and silver takamakiye decoration, signed <i>Inagawa</i> | 1 |
| 37 | Four cases, roiro, decorated tray of fruits in gold takamakiye and aogai, signed <i>Kwanshosai</i> ; four cases, roiro, two hares inlaid aogai and gold hiramakiye reeds | 2 |
| 38 | Four cases, old rubber gold lacquer with pewter coloured plum and cranes in relief, signed <i>Hokio Korin</i> ; three cases, roiro, Korean warrior and attendant, bamboo and poem in gold takamakiye, pewter and aogai, with seal | 2 |

SECOND DAY'S SALE,

FRIDAY, JUNE 30th, 1922,

AT 1.30 P.M. PRECISELY.

Netzuke.

Wood.

LOT

- 57- 39 Long figure of Ashinaga and Tenaga
- 40 Long figure of Gama Sennin; and a Ran Rio dancer
- 41 A long old figure of Ashinaga and Tenaga
- 42 A lacquered figure of a sage with dragon emerging from his bowl, Shuzan style
- 43 Ebony, Sarumawashi with monkey on his back; ditto, Colombo coral diver grasping piece of coral
- 44 A large figure of Raiden (Illus. Joly's Legends) (ex Behrens Coll.)
- 45 Korean hunter with goose
- 60- 46 Kwakkio's wife and baby; the Monkey Priest *RS*
- 47 Seated figure of a sage, head and hands ivory; standing figure of a dancer, head, hands and feet ivory
- 957- 48 Ubume with child, rare subject; Chokwaro holding his gourd, which is movable
- 14/15/- 49 Toba, holding book, riding on a donkey
- 901- 50 Gama Sennin with a frog on his head; a shishi doctor biting his thumb *16166*

1 *2/-*

2 *6/- Garstein*

1 *2/4/-*

1 *3/-*

2 *3/10/-*

1 *11/-*

1 *3/15/-*

2 *3/10/- Garstein*

2 *3/-*

2 *5/4/- Bensley*

1 *4/10/-*

2

High St.

16167

LOT

- 51 Raijin seated on a drum and beating same; Gama Sennin standing on his frog, signed Bungioku; Jurojin with child climbing up his head 3 5/15/-
- 52 Seated figure of a Daruma with inlaid hossu, signed Toyomasa; Jurojin as a dancer, with ivory Benten mask on his head, signed Hojitsu 2 10/4/-
- 53 Capture of the Oil Thief; Yamauba with Kintoki and bear; seated figure of a Chinese sage with long beard, making a sandal 3 3/5/-
- 54 Masks, Obeshime, signed Deme Sukemitsu; Oni; Okame, signed Giokusho; Jo 4 3/1/-
- 55 The birth of a Tengu, signed Shumin (Plate I., No. 5) 1 24/-
- 56 Masks, Obeshime, signed Deme Juman; Hannya, signed Shumin; Okame, signed Shuzan; Uba, signed Deme 4 2/1/-
- 75/- 57 Figure of a female sage, probably Seiobo (Plate I., No. 4) 1 4/4/- *garste*
- 58 Old figure of a dancer with foot on a dragon, partly lacquered 1 38/-
- 59 Group of a coiled snake swallowing a frog, signed Masanao (Plate I., No. 3) 1 6/8/-
- 60 Group of two shishi, signed Toyokazu; figure of a recumbent cow, signed Tsugukuni 2 4/5/-
- 61 Shishimai dancer with movable mask; Tanukibozu, signed Isshusai; basket containing charcoal, signed Riukei 3 4/1/-
- 62 Figure of a Nio, signed Gettsusho (Plate I., No. 7) 1 38/-
- 63 Wolf with tama; coiled snake; two puppies playing 3 5/1/-
- 64 Two wandering dancers resting on mask box containing Tengu mask, signed Kokushosai; Jizo wrestling with oni on lotus leaf, signed Rakumin 2 4/5/-
- 65 Group of horse and foal, signed Shumin (Plate I., No. 2) 1 5/4/-
- 66 A 4in. figure of a Gama Sennin and frog; a smaller figure of same subject; signed Toyomasa 2 3/10/66/-
- 67 Two horn dragon-headed kilin, signed Ichimin Geto (Plate I., No. 6) 1 6/5/-

High St

LOT

- 68 Figure of Shoki with kilin; a figure of Seiobo, ivory head, hands, etc. 2 2/15/-
- 69 Shaped as a Hotei's bag, opening showing Hotei playing go with boy; Nio and Asahina playing udeoshi on go board, signed *Minko* 2 5/10/-
- 70 Figure of a Sennin running his staff through a dragon (Plate I., No. 1) 1 2/15/-
- 71 Two skeletons seated; seal netsuke; skeleton clinging to a tombstone; Ino Hayata killing the Nuyé, signed *Masatoyo* 3 X
- 72 Figure of a sage carrying gourd on his shoulder; ditto, sage consoling oni 2 3/10/-
- 73 Jurojin and Daikoku wrestling, signed *Kojo*; Shoki seated and two onis, signed *Kojo* 2 7/10/-
- 74 The San Sukumi, signed *Akiharu*; two puppies playing, signed *Riusen*; rat on bean, signed *Ittei*; cicada on bamboo 4 5/10/-
- 75 Boy making grimace, with Okame mask at back, signed *Hojitsu*; the dragon doctor, signed *Miwa*; Gentoku mounted 3 5/-/-
- 76 Woman opening a hozuki, fruit inlaid coral, Raijin resting, signed *Kasen*; mask carver, signed *Masayuki* 3 5/-/-
- 77 Sambaso dancer; Shishimai dancer, signed *Miwa*; Shishimai dancers, one man with Okame mask, signed *Miwa* 3 3/5/-
- 78 Oni temple servant with gong; chrysanthemum flower; two blind shampooers fighting, signed *Doraku* 3 3/-/-
- 79 Priest carrying badger tea kettle, signed *Kokuzan*; two conventional worm-eaten bamboo shoots containing Moso; man asleep on banana leaves; fisherman fighting with octopus, signed *Jugioku* aged 78 4 7/15/-
- 80 Kikujido, signed *Rampo*; Gama Sennin seated and frog, signed *Yasumoto*; mask carver with Hiottoku mask 3 3/5/-
- 81 Man making millstone, signed *Masayuki*; Daikoku tying up a thief, signed *Minko*; man capturing badger tea kettle 3 3/5/-
- 82 Dancer with bell and large mask, signed *Miwa*; group of seven masks; Shishimai dancer seated on drum, signed *Riukei*; group of three masks, signed *Joso* 4 3/15/-

5 gms

5.

High 36

16148

16169

LOT

- 83 Faggot carrier resting; Tobosaku, signed *Deme*; acrobat on drum and boy drummer, signed *Miwa*

3.

5/10/-

Lacquer.

- 84 Manzai dancer asleep; boy; man lifting horse's leg, signed *Higo*; boy with fan

4

4/10/-

- 85 Negoro lacquer figure of a Nio (Plate I., No. 8)

1

4/10/-

- 86 Five figures of dancers, three signed *Shuzan*; one signed *Sanekazu*

5

3/1/-

- 87 Daikoku and Ebisu as Manzai dancers; Saigyo Hoshi, signed *Hogen Shuzan*; Okame dancer with ivory mask

3

3/10/-

- 88 Wood, storyteller reading book, signed *Rakumin*; boy with tortoise, signed *Hojitsu*; seated noble, ivory hands and face, signed *Shuka*; Okame, ivory hands, feet, and face

4

2/17/6

Ivory.

- 89 A 4½ in. figure of a Sennin carrying persimmon branch

1

Beasley

- 90 A 4½ in. figure of a sage carrying peach in which is a figure of a deity

1

6/10/-

- 91 A rare form of a kilin-headed hoho bird, in circular form

1

3/10/-

- 92 A 4 in. figure of Jurojin with staff and gourd

1

2/10/-

- 93 A 3½ in. figure of Chokwaro, gourd and horse (Plate I., No. 12)

1

6/10/-

- 94 A 3½ in. figure of Ono-no-Komachi in tattered clothes

1

3/1/-

- 95 An old 3½ in. figure of a sennin with sphere

1

5/1/- Beasley

- 96 A 4 in. figure of a Sennin with long beard

1

16170

- 97 A 4 in. figure of a Komuso

1

3/1/-

- 98 A 4 in. figure of Kwanyu holding his beard

1

3/2/-

- 99 A 2¾ in. figure of Ono-no-Komachi, holding on her hat

1

4/1/-

- 100 A 3½ in. figure of Jurojin, crane, and boy

1

5/1/-

- 101 A 3¾ in. figure of Riujin, octopus headgear, carrying tama

1

8/10/-

Gunsberg

LOT

- 102 A 3in. figure of a Sennin holding a perforated sphere (*Plate I., No. 8*) 1 3/-/-
- 103 A 3in. figure of a Korean hunter with bow and arrow 1 3/15/-
- 104 A 2½in. figure of Hotei carrying child on his back 1 3/-/-
- 105 A 8½in. figure of a Chinese boy with staff, makimono, and fan, signed *Masakazu* 1 3/10/-
- 106 A 2½in. seated figure of Ono-no-Komachi, with basket and large hat on her back 1 2/-/-
- 90/- 107 A 4in. figure of a Dutchman with cock; and a 2½in. figure of Kwakkio 2 13/-/-
- 108 A 3¾in. figure of a sage with fishing net; a 4in. figure of a Dutchman with monkey 2 5/10/-
- 3/5/- 109 A 3¾in. figure of Sennin with dragon emerging from his bowl; a 3¼in. figure of a Gama Sennin and frog 2 16/7/-
- High St. 110 A 2½in. figure of a Kitsune dancer and child; a ditto figure of a Korean with fan 2 2/4/-
- 111 A 4in. figure of Ashinaga with carp; a 3in. figure of a sage scratching his ear 2 4/-/-
- 112 Sage reposing, reading a book; Korean hunter with horn, and child on his back 2 3/5/-
- 113 A 3¾in. figure of a hunter with bow, arrow, and quiver; a 3in. figure of Tobosaku 2 30/-
- 114 A 3in. figure of a Sennin carrying a shishi (*Plate I., No. 14*) 1 3/10/-
- 115 Group of tiger and cub, signed *Hakuryu* 1 4/-/-
- 116 Boar asleep on herbs; goat 2 5/-/-
- 117 Squirrel and grapes, signed *Shunkosai*; horse, in Nara style; two rabbits, signed *Tomochika* 3 4/-/-
- 118 Jurojin and Hotei wrestling, Daikoku as umpire, signed *Tomochika*; Shoki on shishi, signed *Mitsusaku* (A.F.); sage asleep, resting on stand 3 3/10/-
- 119 Shoki performing Oniyaria ceremony, and oni, signed *Tomochika*; sage with sphere, signed *Hidemasa* 2 2/4/-

LOT		
120	Horse resting; dog scratching its ear, signed <i>Shoraku</i>	2 4/15/-
121	Seated figure of a kilin looking upwards	1 3/1/-
122	Dutchman carrying child on his back; man dancing; old woman carrying bag and staff	3 4/1/-
123	Small figure of Hotei carrying gourd and bag, signed <i>Meikeisai Hojitsu</i> (Plate I., No. 9)	1 8/15/-
124	Awabi shell diver, reposing on large awabi shell; woman suckling her child	2 2/10/-
125	A small group of three rats and chestnuts, signed <i>Kwaigyoku</i> (Plate I., No. 10)	1 6/10/-
126	Seated dancer yawning; travelling female musician and child, <i>Minkoku</i> ; Daikoku dancer	3 2/10/-
127	Man with lantern, boy, and three puppies, signed <i>Seimin</i> ; finely modelled persimmon, signed <i>Mitsuhiro</i>	2 4/15/-
128	An old figure of Ono-no-Komachi (Plate I., No. 15)	1 2 gno
129	Figure of a seated rakan with Jui and gourd; standing figure of Shino 16172	2
130	Old group of wolf and skull, eyes inlaid; tiger on bamboo stem	2 4/5/-
131	Figure of Roshi riding on an ox	3
132	Hunter killing a boar, signed <i>Masanao</i> ; Kanshin episode; Roshi standing beside a recumbent ox	3
133	Peasant with rat bait accompanied by Tanuki Bozu; Kwakkio with the golden teapot	2
134	Temple servant with gong and large hat; Shishimai drummer, signed <i>Masakazu</i>	2
135	Small group, oni and Yemma-O singink, Jizo playing samisen, signed <i>Giokukosai</i> ; badger with dipper beside hibachi, etc., signed <i>Shigemasa</i>	2
136	Figure of a stag, signed <i>Tomotada</i> (Plate I., No. 11)	1
137	Peasant with sake kettle, asleep; Rinnaisai feeding crane and boy with trumpet	2

2/5/1

High str

LOT

- 138 Small group of Jurojin, Okame, and boy returning from Ichino-Tani, signed *Chounsai*; mother washing clothes, boy and puppy, signed *Kiyomitsu* 2
- 139 A 5in. slender figure of a lady with fan; a 6½in. ditto figure, Kappa on a bean; a 4¾in. cuttlefish 3
- 140 Kanzan and Jittoku with makimono and besom, signed *Tomokazu*; Shojo and chrysanthemum 2
- 141 Kikujido carrying chrysanthemum; a peasant with pipe and spade 2
- 142 Figure of puppet showman with doll and fox skin; Sarumawashi pulling down peach tree, aided by his monkey 2
- 143 Sambaso monkey, coral face, wood and amber hat, signed *Tenmin*; rat on straw brush, signed *Tomotada*; small figure of a crab, signed *Kohosai* 3
- 144 A 2¾in. figure of Kiyohime encircling the bell of Dojoji 1
- 145 Lady with fan returning from the bath; two boys playing, signed *Riomin* 2
- 146 Kappa offering Benten a tama, signed *Giokutei*; Sotoba Komachi, signed *Ran*; Kwanyu seated, resting on table and fanning himself, signed *Masatsugu* 3
- 147 Group of three Manzai dancers, signed *Homin*; Sambaso dancer; Manzai dancer, signed *Masamitsu* 3
- 148 The three paragons of longevity seated, signed *Riusai*; two blind shampooers helping along two other drunken ones, signed *Tomochika*; Oni temple servant with umbrella and gong, resting, signed *Jugioku* 3
- 149 Semi-circular figure of a dragon; small group of Kwanyu, Chohi, and attendant offering sake, signed *Sogiokusai*; temple servant with lantern and large hat 3
- 150 Group of nine masks, signed *Homin*; Daikoku with bag, dancing 2
- 151 Two boys playing in fishpond, signed *Homin*; hamaguri shell, interior carved pine trees and landscape; skull, signed *Narimitsu* 3
- 152 An old figure of a recumbent deer; ditto, cat licking its paw 2

LOT

- 153 Group of three monkeys imitating the Three Wise Monkeys, signed *Masatomo*; monkey on vine; three monkeys on each others shoulders 3
- 154 Group of five frogs on lotus leaf, signed *Seimin*; ivory shishi on gold lacquer base; small group of numerous fishes, signed *Giokuhosai* 3

Lacquer.

- 155 Suzuri-bako, kinji, decorated with gold, takamakiye rocks and reeds, red, gold, and silver mandarin ducks, sumiye and gold stream, and gold togidashi reeds in the distance; interior, hirame on black, decorated with a gold takamakiye rocks and pine trees (*Plate XXX., No. 23*) (ex Seymour Trower Coll.) 1
- 156 Suzuri-bako, nashiji, gold takamakiye monkeys, rocks and pine tree, some of the leaves aogai, with pewter monkey hanging from latter trying to catch reflection of moon; interior mura-nashiji with gold decoration in relief, pine and maple trees, river and mountain; and maple leaves in gold takamakiye and aogai 1
- 157 Suzuri-bako, early 17th century, nashiji on black, decorated with gold, pewter and aogai Ranrio dancer, drum and curtain; interior decorated fans in same technique 1
- 158 Suzuri-bako, fine nashiji, decorated with a gold takamakiye river view, houses, and two cranes in flight; interior, similar subjects on similar ground (*Plate XXX., No. 24*) 1
- 159 Suzuri-bako, mirror black lacquer, decorated gold takamakiye birds, fence, rocks, etc., also a silver fence; interior, nashiji on red-brown lacquer, decorated gold takamakiye tokusa, and silver foil crescent moon 1
- 160 Small mirror black suzuri-bako, decorated in gold, silver and red takamakiye with Genso and Yokihi partaking of tea in a canopied stand in the palace grounds; bordered with raden hirame and gold and silver togidashi floral decoration; interior, ko-hirame on black with gold togidashi spiders' webs and flowers of autumn, signed *Harui Komin* (*Plate IV., No. 28*) 1

LOT

- 161 Small suzuri-bako, gold poudre on mirror black, decorated in gold takamakiye and nashiji with the emblems of Tanabata; interior, rich nashiji with brown band decorated flowers of autumn in gold and silver hiramakiye, some of the flowers inlaid aogai 1
- 162 Suzuri-bako, mirror black, decorated with Narihira in gold takamakiye on horseback, the horse in togidashi, admiring silver lacquer Fujiyama; interior, hirame on black, decorated with numerous chidori in gold takamakiye and pewter 1
- 163 Kodansu, nashiji, decorated with various shades of gold, black, silver and nashiji togidashi, with lotus plants and stream; interior containing five drawers, decorated hirame on black with gold togidashi lotus leaves; interior of door bearing gold, silver, and black togidashi decoration of Kwannon riding on waves on a lotus leaf, with long inscription in gold 1
- 164 Chabako, nashiji, decorated with diaper pattern in gold, red, brown, and green lacquers and gold foil, in relief; haiotoshi and jukogo to match; inner tray, nashiji with gold takamakiye decoration of Kikujido beside a stream. Haiotoshi and tray (*Plate IV., No. 25*) 1
- 165 Large natural wood suzuri-bako, decorated with a tsuishu lacquer stand in high relief inlaid with somada lacquer diaper design; interior, large hirame on black, decorated in silver, greenish-gold, and red kakemono, inlaid white pottery medallion with brown decoration, signed *Ritsuo*, *Kwan* seal 1
- 166 Mizusashi, mura nashiji on brown, gold hiramakiye crests and floral medallions 1
- 167 Kobako, old, nashiji, decorated gold takamakiye kiku and crests, rubbed showing black foundation 1
- 168 Kobako, old, shaped as a four-fold screen, one panel closed, the other two panels, gold lacquer with decoration in relief of flowers, moon, boys and pine tree 1
- 169 Kobako, old, dropping lid, black lacquer dotted with gold, gold takamakiye decorated shells and pine trees 1
- 170 Octagonal old kobako, black with large hirame, gold takamakiye decoration of Kikujido; inner tray, kiku; interior nashiji, 17th century (*Plate IV., No. 27*) 1

LOT

- 171 Mirror box, nashiji, decorated in relief with pine tree, magnolia, fence and river; nashiji interior. *A fine old piece* 1
- 172 Natsume, roiro, decorated with two Bugaku dancers on stage, Bugaku drum, curtain, maple trees and helmet, in gold takamakiye, coloured pottery, and aogai 1
- 173 Box in two partitions, shaped as two intercepting boxes; one box kinji, decorated in relief with cock and hen on rocks and peonies, in gold takamakiye, silver and red; the sides of the box fundame stream with four ducks in gold and silver takamakiye and togidashi, and rocks; the other box, inlaid all over with aogai diapers on black and green lacquer; inner tray, kinji, with silver heron in relief flying over water flowers, giobu border; bottom compartment contains four small boxes with inlaid aogai diapers on black; interior of box, rich nashiji 1
- 174 Kobako, pewter okiguchi, hirame on black, decorated boats in pewter, carrying faggots; in mother-o'-pearl; interior, rich giobu and gold kiku (ex Mene Coll.) 1
- 175 Kobako, kinji, decorated in slight relief in gold, silver and red, with dianthus flowering plants; interior, rich nashiji 17th century) (ex Trevor Lawrence Coll.) (*Plate IV., No. 26*) 1
- 176 Kobako, pewter okiguchi, hirame on black, gold, takamakiye chidori, pine, rocks and stream (early 18th century) 1
- 177 Chabako, nashiji on black, lid decorated in relief with a sarumawashi with performing monkey, in gold and silver; inner tray, Hotei in similar technique. Old piece 1
- 178 Chabako, shaped as two intercepting lozenges, nashiji, decorated gold takamakiye crest and karakusa and ditto diaper with pewter border; inner tray karakusa border and kiku crests. An old piece 1
- 179 Fubako, hirame on black, decorated in gold, takamakiye and aogai, long-tailed birds, rocks, floral crests and karakusa 1
- 180 Chabako, old black lacquer, gold hiramakiye reeds and dragon-flies, inlaid aogai; kobako, circular, black lacquer, gold hiramakiye reeds, and inlaid pottery stag 2
- 181 Kogo, hirame on black, gold takamakiye hoho bird and clouds; ditto, hirame on black, decorated peasants in ricefields, in slight relief; ditto, hirame on black, dianthus flowers in gold togidashi. All with pewter okiguchi 3

LOT

- 182 Kobako, mirror black, decorated with six cranes and grasses, in gold hiramakiye, pewter and aogai; circular kogo in kamakura lacquer, carved in high relief with shishi and peonies 2
- 183 Jukogo, fine old nashiji, with gold hiramakiye decoration of the Ujigawa Crossing, Noshi shape 1
- 184 Square kogo, hirame on black, decorated flowers of autumn in gold togidashi; ditto, old nashiji, kiri crests in pewter and gold takamakiye; interior, similar crests in gold togidashi (ex Coll. Count Tanaka Osaka) 2
- 185 Sake cups, set of three, red-brown, gold and silver decoration in slight relief; decorated land and seascapes, signed *Shinkinsai*, *Shorinsai*, and *Yasuyuki* 3
- 186 Ditto, set of three, decorated caparisoned horses in gold takamakiye, foil, and pewter, inscribed "After Hogen Genchin," "After Hogen Tansaku," the largest "After Okio " 3
- 187 Tsuishu lacquer pipe case, minutely carved with the Sixteen Rakans 1
- 188 Two ivory haircombs, delicately inlaid butterfly and peony in coloured mother-o'-pearl and tortoiseshell; three small carved statues of Kwannon and Fudo (2) 5
- 189 Tanto, straight yakiba, mirror black lacquer scabbard, silver mounts, chased chrysanthemums and stream, signed *Takayuki*, the blade signed *Tadakuni* 1

Other Properties.

- 190 A fine sage ju, mirror black lacquer, decorated all over in gold takamakiye with rice fields, naruko, sparrows, and rice sheaves drying on poles, containing a dozen trays, two sake bottles on stands and five partitioned jubako 1

The Property of a Lady.

Hasps.

- 191 Six white jade hasps, dragon heads; two with dragons in high relief, another carved conventional design 6

LOT

- | | | |
|-----|---|----|
| 192 | Six plain white jade ditto, with dragon heads | 6 |
| 193 | Two dark green jade ditto; another, dragon in high relief; a brown jade ditto; and a light green ditto with apricot strata | 5 |
| 194 | A grey and black jade ditto, carved dragon and leaf, in high relief; a light brown stone ditto, carved dragon in high relief; an agate ditto, similar decoration; and a plain crystal ditto | 4 |
| 195 | A white opaque glass ditto; an agate ditto; a light green jade ditto; and a mother-o'-pearl ditto, carved dragon in relief | 4 |
| 196 | Six porcelain ditto, with various decorations and in various colours | 6 |
| 197 | Twelve brass, bronze, and iron ditto, some very old; and a small vase, made up of coral beads | 13 |
| 198 | Green jade, dragon head; light green jade, carved and pierced dragon in relief, and carved dragon head; light grey jade, carved and pierced dragon in high relief, carved dragon head | 3 |
| 199 | Light brown jade, carved and pierced dragon in relief, dragon head; mutton fat and blue-grey jade, bearing similar decoration, kylin head | 2 |

Chinese Buckles.

- | | | |
|-----|--|---|
| 200 | Two pierced white jade buckles, butterflies and characters and kiku; another, carved peony plant; another, plain | 4 |
| 201 | A plain light green jade ditto, dragon head; an apricot jade ditto; carved and shaped as butterfly; plain red quartz ditto; plain white jade, apricot tint; and a blue agate, ditto, engraved mushroom | 5 |
| 202 | An agate ditto with jasper markings; another with black markings; another, engraved pine and bamboo; and a plain double ditto | 4 |
| 203 | Mutton fat jade ditto, carved dragon in relief; plain amethyst quartz ditto, in white jade case; onyx ditto in similar case; a white and grey jade ditto; and a rose quartz ditto | 5 |

LOT

- | | | |
|-----|--|---|
| 204 | Two plain opaque white glass ditto; a crystal ditto; another, mounted on opaque glass case; opaque white with green splash; another, opaque white with dragons in blue in relief; another, red dragons on turquoise base | 7 |
| 205 | Mutton fat jade, carved iris and mushroom; shaped as butterfly; carved chrysanthemum; carved conventional design; carved river view and boat | 5 |
| 206 | White jade ditto, pierced and carved dragons; pierced and carved bat and peach; carved bats and "Jui" in grey strata; and plain double interlocking ditto | 4 |
| 207 | Two rose quartz ditto, mounted in opaque white glass cases; and another quartz ditto, mounted in light green jade case | 3 |
| 208 | Three ivory ditto, carved in relief, dragon and waves, chrysanthemums, and conventional design | 3 |
| 209 | Nine porcelain ditto in various colours, bearing various designs | 9 |
| 210 | White jade, carved dragons on dark grey base | 1 |
| 211 | Light green jade with yellow-brown strata, bearing similar decoration | 1 |
| 212 | White jade, carved in high relief, persimmon and bat; light green jade, one end carved and pierced dragon, the other carved as a gong; white jade, pierced and carved four circular crests | 3 |
| 213 | Dark green jade with curved sides; ditto, similar piece, only smaller; brownish grey jade, carved conventional flowers in slight relief | 3 |
| 214 | White jade interlocking buckle, carved dragons and clouds in slight relief; white jade with Jui head ends, centre engraved hat and brush; white jade, single, carved dog of Foh in slight relief; light green jade with touch of blue, carved peach in slight relief | 4 |

Ormolu Mounts

Inlaid various Stones and Coloured Glass.

- | | | |
|-----|---|---|
| 215 | Four white jade buckles, carved shishi; two boys and bird; carved and pierced duck and lotus; ditto floral design | 4 |
|-----|---|---|

LOT		
216	Rose quartz centre, two green jade side pieces; turquoise porcelain centre, two quartz side pieces	2
217	White jade centre, pierced and carved dragon, red glass side pieces; rose quartz centre, blue glass side pieces, and various other coloured glass stones, inlaid; two amber coloured side pieces, jade centre piece, mounted on light blue glass	4
218	Agate centrepiece, decorated leaves, glass side pieces; and three other pieces	4
219	Five ditto, inlaid with coloured quartz and coloured glass	5
220	Inlaid amber, sulphur, and dark blue glass; lapis-lazuli, jade and other stones; coloured quartz; two turquoise porcelain plaques	4
221	Five ditto, with inlays imitating jade, rose quartz and crystal quartz	5
222	Mother-o'-pearl centrepiece, lapis side pieces; and four other pieces of coloured glass, stones, and porcelain	5
223	Coral centre, turquoise side pieces; green jade side pieces, quartz centre; and two others	4
224	White jade, carved boy and lotus; and four others of coloured stone and coloured glass	5
225	Six ditto, with coloured stones and coloured glass centres and side pieces; one mounted in white jade	6
226	A similar lot of six	6
227	Jasper centre, jade coloured side pieces, on white jade mount; and four other pieces	5
228	Two buckles with moss agate centrepieces, coloured side pieces on white jade base; and another piece	3
229	Rose quartz centrepiece; ditto side pieces; a pair, pink stone stone centrepieces and white jade side pieces; and two other pieces	5
230	Six buckles, inlaid jade, quartz, etc.	6
231	Two agate buckles; another, moss agate; and another, inlaid cinnabar coloured china	4

LOT

- | | | |
|-----|---|---|
| 232 | Four buckles, inlaid white jade mounts, carved boy and lotus, dragon, butterflies, and vine, and plain ditto | 4 |
| 233 | Buckle, inlaid moss agate; another, red quartz; another, white jade; and three other pieces | 6 |
| 234 | Ditto, inlaid, a pair of mother-o'-pearl plaques, carved birds and monkey; ditto, inlaid, two white jade plaques; another, inlaid single jade plaque; inlaid rose quartz stone on cloisonne enamelled base | 4 |
| 235 | Three single buckles, inlaid porcelain plaques; and four others, inlaid stones | 7 |
| 236 | Filigree mount, inlaid conventional mother-o'-pearl design; another, similar; another, inlaid turquoise stones; and another | 4 |
| 237 | Two buckles, inlaid green glass, one ornamented dragon; two with jade plaques; and another | 5 |
| 238 | Inlaid white jade plaque, carved and pierced butterflies and melon plant; ditto, engraved pine tree, mushroom, etc.; chased mount, inlaid, white jade plaque, pierced and carved elephant; ditto, crane and lotus | 4 |
| 239 | Inlaid with a mutton fat jade plaque, carved conventional design; ditto, similar plaque, carved hare and ferns; inlaid mutton fat jade plaque, carved dragon in relief; ditto, white jade delicately carved and pierced with conventional floral design | 4 |
| 240 | Chased mount, inlaid six pieces of turquoise with a red stone centre; ditto, inlaid light blue stone; ditto, inlaid light blue stone | 3 |
| 241 | Inlaid, two pieces of grey jade, carved conventional design; ditto, two plaques of grey jade; inlaid, two purple coloured quartz plaques with green jade centre; ditto, inlaid, two plain jade plaques | 4 |
| 242 | Inlaid, white jade plaque, carved and undercut hawk chasing crane; ditto, transparent stone, inlaid white porcelain fruit in relief; ditto, inlaid, two small white jade plaques, carved gourd, and one larger ditto, carved gourds and bat | 3 |
| 243 | Inlaid, two small green jade plaques, leaf-shaped, centre plaque in mother-o'-pearl, surrounded by small pieces of coral; ditto, inlaid, two pieces of quartz; a pair, inlaid with an onyx plaque with loose ring handles; ditto, inlaid two jade plaques, carved to represent cash | 5 |

Various.

LOT

- | | | |
|------|---|---|
| 244 | Three buckles, inlaid coloured stones and glass on white jade mounts; another, on white glass mount; a mother-o'-pearl plaque, carved dragon; and another glass ditto | 6 |
| 245 | Two wood hasps, carved and pierced dragons in relief; four wooden buckles; and an ormolu mount hasp, inlaid stones and coloured glass | 7 |
| 246 | Nine cloisonne buckles, decorated flowers and emblems in colours, on various coloured bases | 9 |
| 247 | Canton enamel buckle; a brass ditto, chased birds and plum tree; a silver ditto, chased conventional design, with border of stones; a black metal ditto, with silver wire dragon; and another piece | 5 |
| 248 | Two hasp buckles, ormolu mounts, inlaid coloured floral decoration in cloisonne on blue ground; and a Canton buckle, decorated dragon in colours on blue ground | 3 |
| 248A | <i>Ormolu</i> mount, inlaid blue and white porcelain plaque, Kien Lung; a mother-o'-pearl buckle, carved dragons in relief, ormolu mount; two embroidered buckles; and another, coloured glass | 5 |

Brass Buckles.


- | | | |
|-----|--|---|
| 249 | Chased and pierced dragons in high relief; ditto, dragons and waves; chased in relief with flowers and tendrils; another, similar decoration | 4 |
| 250 | Chased in relief, a pair, dragons; another, similar, the dragons being movable; inlaid, two copper coins; another, inlaid, three copper coins | 5 |
| 251 | Pierced and chased dragons in relief; ditto, similar decoration; pierced and chased, fine diaper with pin points in relief; ditto, dragons in relief; carved bats and longevity emblems in slight relief | 5 |
| 252 | Four buckles, shaped to imitate Chinese money; another, pierced conventional design; another, chased dragon; another, bats and characters; another, plum blossom | 8 |
| 253 | Pierced and undercut peony design; two ditto, emblems; another, with loose kilins; and four others | 8 |

LOT		
254	Two buckles, pierced emblems; another, cash; another, pierced diaper; and two others	6
255	Six buckles, pierced and chased various designs; and another, chased conventional design	7
256	Three buckles, chased dragons in relief; another chased kilin; and five other pieces	9
257	Two white metal buckles, chased conventional floral design in high relief; two brass buckles, chased conventional design; and another, chased kilins in relief	5

Snuff Bottles.

258	A chocolate coloured glass bottle, bulbous shape, imitating stone; another similar bottle, same technique	2
259	An amber bottle, carved stag, crane, and pine tree in relief; a Pekin lacquer bottle, carved sages and landscape	2
260	A small aquamarine bottle, minutely carved dragon, clouds, and waves; a crystal quartz bottle carved squirrel and nasubi	2
261	A hexagonal grey jade bottle, and a pebble-shaped ditto bottle, with red-brown markings; two agate bottles, one with mask handles	4
262	A seal wax red porcelain bottle, carved dragons (A.F.); another, decorated children in colours; a Canton enamel bottle, white ground, decorated sage and mountain landscape; a white metal bottle with black ground, decorated conventional chrysanthemums and scroll work	4
263	A white jade, engraved dragons, turquoise stopper; an opaque white gourd-shaped bottle, bats in red and relief; and an ivory bottle, similar shape, engraved landscape and figures; a glass bottle neatly painted on the interior with bear, eagle, and stork and pine-tree	4
264	A blue and white porcelain bottle, animals and landscape; ditto, Chinese ladies; a green crackle bottle shaped as two tobacco leaves; another, apricot glaze	4
265	A pair of 20in. by 16in. wall cabinets, suitable for small ivories	2
266	A pair of 25in. by 18in. ditto cabinets; and another, smaller	3
267	A pair of 19in. by 36in. roiro lacquer panels, inlaid ivory and aogai figures of ladies and attendants. Seal signatures	2

END OF SALE.



Periodical Sales.

POSTAGE STAMPS,

ANTIQUÉ CHINA, SILVER PLATE, &c.

COLOURED PRINTS, ENGRAVINGS, &c.

COINS, WAR MEDALS, AND DECORATIONS.

VIOLINS, VIOLONCELLOS, BOWS, &c.

Terms: 12½ per cent.; minimum charge on any lot, 2/6.

Entries can now be received.


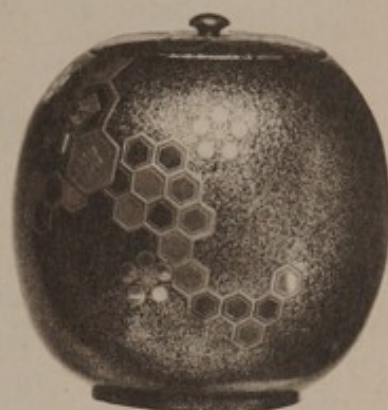


PLATE IV.



25



25



26



28

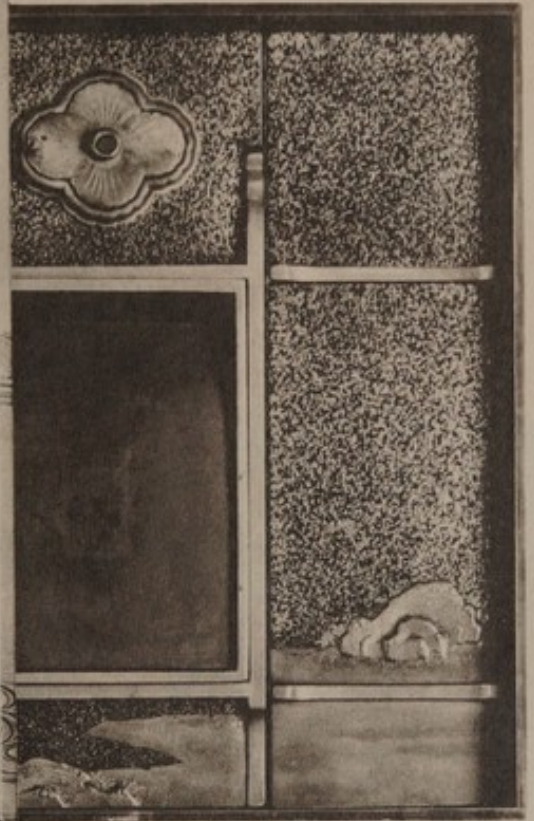


27

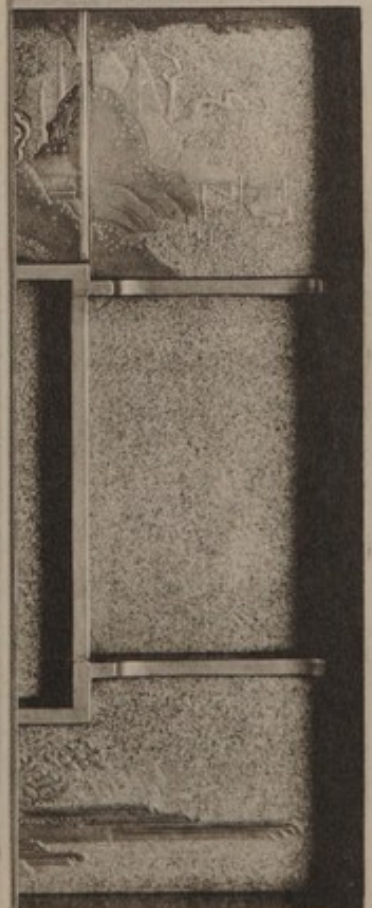
1871

D97

PLATE III.



23



24

PLATE II.



16



19



18



17



22



21



20

PLATE I.



1



2



3



5



6



4



8



7



10



9



12



11



13

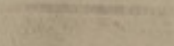
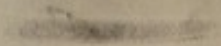


14



15

PLATE I



THE ARGYLL GALLERY

— NOTICE. —

WEEKLY SALES

OF

COINS, WAR MEDALS AND DECORATIONS,
FINE ART AND BRIC-A-BRAC, AND
JAPANESE AND OTHER ORIENTAL
FINE ART PROPERTY, AND
: MUSICAL INSTRUMENTS. :

Auction Sales

Of Postage Stamps are held on alternate Tuesdays and
Wednesdays each Month throughout the Season.

NEXT SALE July 10th.

Engravings, Pictures, Plate, Jewellery, &c.

NEXT SALE Will be duly advertised.

Coins and Medals.

NEXT SALE Will be duly advertised.

Oriental Art.

NEXT SALE Will be duly advertised.

Open daily for the reception of Fine Art Property,
Jewellery, Plate, China, Coins, Medals, Stamps, &c.

Particulars of these Sales will be found advertised every Saturday in the
"Times" and "Daily Telegraph."

VALUATIONS MADE FOR PROBATE AND FIRE INSURANCE.

TERMS ON APPLICATION.

Messrs. Glendining & Co., Ltd.

CONDUCT AUCTION SALES OF
SILVER, JEWELLERY, ANTIQUE
FURNITURE, VIOLINS

War and Commemorative Medals - Coins
Postage Stamps - Fine Art + etc.

WEEKLY THROUGHOUT THE SEASON.

PRICED COIN AND MEDAL CATALOGUES, 2/- each, post free.
FINE ART AND STAMPS, 2/- each, post free.

*CASH ADVANCES, IF REQUIRED,
ON LOTS SENT FOR
ABSOLUTE SALE.*

Lots to be included in these Sales
should be sent in as soon as possible.

PROMPT SETTLEMENTS.

GLENDINING & CO., Ltd.
7, ARGYLL STREET, OXFORD CIRCUS, W. 1

PARRY & SON, Philatelic and General Printers, Tringale Printing Works, Bournemouth.