

## **Sales catalogue: Foster**

### **Publication/Creation**

21 January 1925

### **Persistent URL**

<https://wellcomecollection.org/works/bxfqq93b>

### **License and attribution**

This work has been identified as being free of known restrictions under copyright law, including all related and neighbouring rights and is being made available under the Creative Commons, Public Domain Mark.

You can copy, modify, distribute and perform the work, even for commercial purposes, without asking permission.



Wellcome Collection  
183 Euston Road  
London NW1 2BE UK  
T +44 (0)20 7611 8722  
E [library@wellcomecollection.org](mailto:library@wellcomecollection.org)  
<https://wellcomecollection.org>

WA/Hmm/cm/82/6/499  
J. B. 40  
Original  
Telephone—REGENT 909

Telegraph—FOSTERDOM, LONDON.

PALL MALL.

*A Catalogue*

OF

**Old Dutch & Italian Pictures**

OLD ENGLISH LANDSCAPES & PORTRAITS

Modern Pictures and Water Colour Drawings.

**ENGRAVINGS, ETC.**

*From various sources.*

WHICH WILL BE SOLD BY AUCTION

BY

**MESSRS. FOSTER**

*(Established 1810)*

**At the Gallery, 54, Pall Mall, S.W.1.**

**On WEDNESDAY, 21st JAN., 1925**

**AT ONE O'CLOCK PRECISELY.**

May be viewed two days prior, when Catalogues may be had of  
MESSRS. FOSTER, 54 Pall Mall, S.W.1.

## CONDITIONS OF SALE.

---

FIRST.—The highest bidder to be the buyer ; and if any dispute arise between two or more bidders, the lot in dispute shall be immediately put up again and re-sold, or not, as the auctioneer may decide, who is also to regulate the biddings and be the sole arbiter. The vendors reserve the right of bidding by themselves or agent, and of withdrawing any lot or lots.

SECOND.—The purchasers to give in their names and places of abode, and to pay down, *if required*, 5s. in the £, or more, in part of payment, or the whole of the purchase-money, in default of which the lot or lots so purchased to be immediately put up again and re-sold.

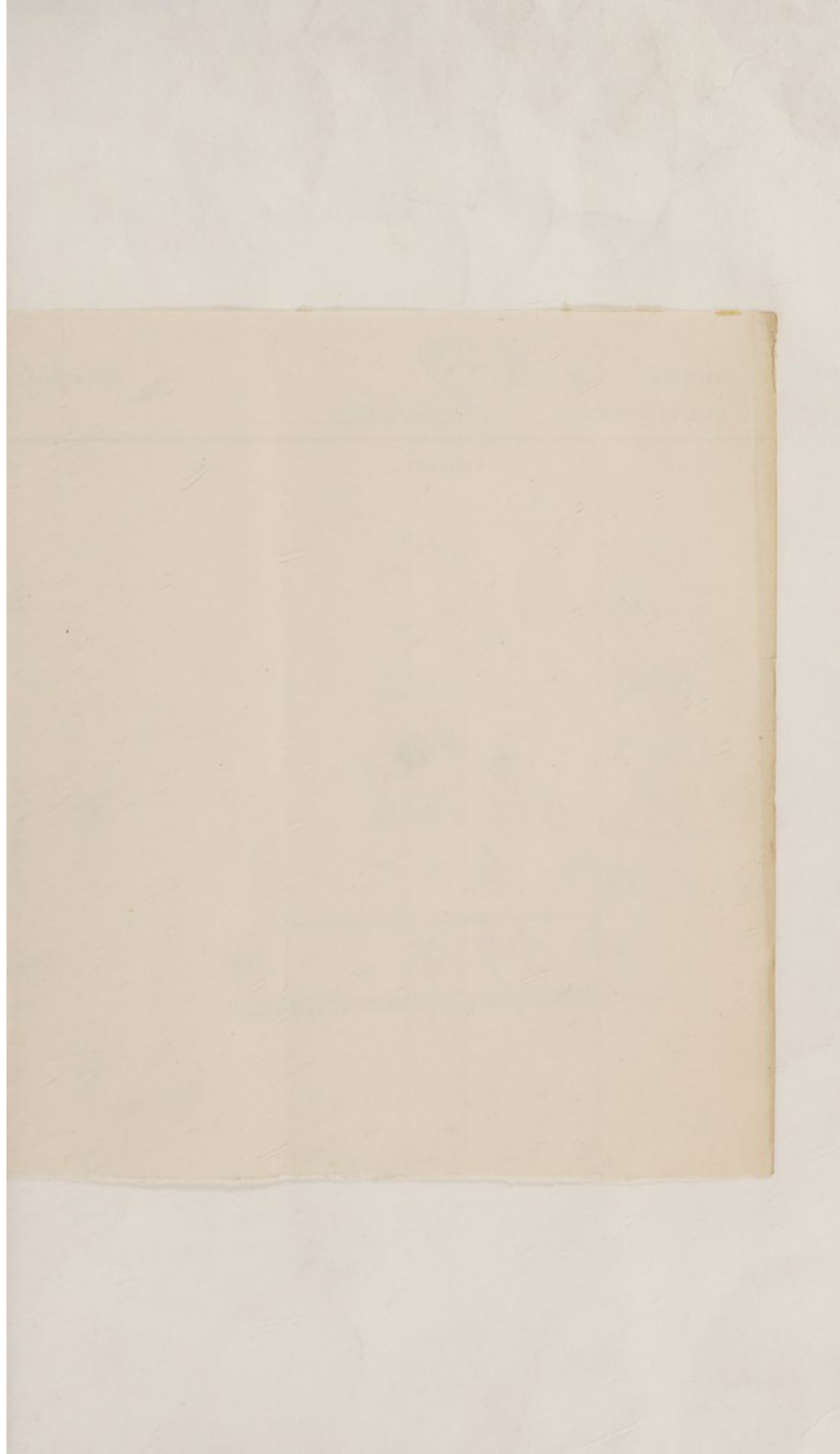
THIRD.—The lots are to be taken away and paid for, whether genuine and authentic or not, with all faults and errors of description, the day after the sale ; Messrs. FOSTER not being responsible for the correct description, genuineness, or authenticity of any lot.

FOURTH.—To prevent inaccuracy in delivery and inconvenience in the settlement of the purchases, no lot can be transferred, nor can any lot be removed during the time of sale ; each buyer must pay for the whole of his purchases before any lot is removed.

FIFTH.—All lots uncleared within the time aforesaid may be re-sold by public or private sale, when or where the vendors think proper, without notice to the defaulter ; and the deficiency (if any), and the expenses attending such re-sale, and any other loss the vendor may sustain, shall be made good by the defaulter, but this condition is without prejudice to the vendor enforcing the purchase, whether a deposit has been paid or not.

NOTE. — *All lots remaining uncleared, by either Vendors or Purchasers, beyond three days from the day of sale will be subject to a charge of 2s. 6d. each per week for warehousing from the day of sale.*





BUYER

W. E. P.

Date

21/1/25

AUCTIONEERS

Foslers

Lot	Amount			Lot	Amount		
	£	s.	d.		£	s.	d.
37	1	15	..				
59	2	..	..				
+ 199	6	16	6				
207	4	10	..				
224	6	16	6				
+ 129 <sup>rs</sup>	6	..	..				
<u>£ 27 18 ..</u>							

# A CATALOGUE.

---

On WEDNESDAY, the 21st day of JANUARY, 1925.

AT ONE O'CLOCK PRECISELY.

## ENGRAVINGS, Etc.

### LOT

- 1 Sixteen—A Landscape, *by W. Woollett, after Smith of Chichester*, and fifteen others, various
- 2 Two—A Ship in Dry Dock, and a Steam Yacht, *coloured lithographs*
- 3 A pair—The Battles of the Nile and Camperdown, *J. Fittler, after De Louthembourg*
- 4 Two—The Great Exhibition, *lithograph*, and a coloured Morland Figure Subject, *woven*
- 5 Four—A View of Constantinople, Holyrood Castle, and two other *coloured lithographs*
- 6 A Portrait of a Lady, *remarque proof etching by A. Mathey*
- 7 A pair—The Surrender and Massacre of Fort Talneir, *by J. Hudson, coloured aquatints*
- 8 Two—Damon and Phoebe, and Lear and Cordelia, *stipple, circles*
- 9 Doncaster Races, *Smart and Hunt, after Pollard, coloured*
- 10 Six—A pair, *aquatint Views of Farnley*, and four other *topographical views*
- 11 Four—A mythological Figure Subject, *wash drawing, ascribed to Rotenhamer*, two others, and a pencil sketch—Westminster
- 12 A large parcel of miscellaneous engravings, etchings, etc., after the old Italian masters and others
- 13 Eight—The Judgment of Paris, *R. Earlom, after Giordano, mezzotint*, Blackfriars Bridge in 1766, and six others



## LOT

- 14 A parcel of landscapes, topographical engravings and etchings.  
 15 The Works of William Hogarth, *plates, folio* 1 vol.  
 16 The Blind Beggar of Bethnal Green, *coloured mezzotint*  
 17 The Action between the Success and the Catelina, *coloured aquatint, by Mercier, after Wilson*  
 18 The Cat's Paw, *engraver's proof, after Sir E. Landseer*  
 19 The Duke of Beaufort's Coach, *Hunt, after Shayer, coloured*  
 20 The Kill, *coloured, after Alken*  
 21 Salisbury Cathedral, *Lucas, after Constable, proof mezzotint*  
 22 Six—A Picture of Health, *artist's proof mezzotint, by S. Cousins, after Millais, and five others*  
 23 A Historical Scene, *coloured*  
 24 A pair of old coloured lithograph Views of Philadelphia, *by B. F. Smith jun., after J. W. Hill and Smith*  
 25 A parcel containing thirty-four coloured Portraits of Ladies, Japanese coloured prints, etc.  
 26 Three—"Despised and Rejected," *after S. Goetze, and a pair, Dutch Landscapes and figures, by J. Browne*  
 27 Two—A Figure Subject, *after F. Morgan, and one other*  
 28 Three—A pair, The Marriage and Coronation of Queen Victoria, *after Sir G. Hayter, and one other*  
 29 The Plan of Attack of the Battle of Trafalgar  
 30 A parcel of old coloured caricatures, etc.  
 31 Lady Charlotte Duncombe, *Wilkin, after Hoppner* 3/-  
 32 A parcel of miscellaneous engravings, etchings, etc. 22/-  
 33 Five—A Figure Subject, *after Dendy Sadler, and four others* 14/-  
 34 Three—A Historical Figure Subject, *in colours, by Bartolozzi, after Rigaud, and two others*  
 36 Four—Portraits of Doctors of Medicine 50/- not sold  
 37 Two—A Portrait of Dr. Hunter, Anatomist, and one other anatomist 50/-  
 38 A pair—The Towns of Linlithgow and Peebles, *coloured aquatints, after Clark* 60/-  
 39 Another pair—Dunkeld and Dundee 60/-

## WATER COLOUR DRAWINGS, Etc.

<i>By or attributed to</i>	LOT	<i>Subject</i>
H. S. TUKE, etc. ....	40	Three—The Corsair and two others 8/-
ENGLISH SCHOOL ....	41	Captain Marriot 8/-
D. ROBERTS ....	42	A Cathedral Interior 12/-
UNKNOWN ....	43	A Portrait of a Lady, <i>pastel</i> 21/-

<i>By or attributed to</i>	LOT	<i>Subject</i>
DE WINT .....	44	A Mountain Pass 5/-
MORLAND .....	45	Two—Feeding Pigs, and one other, 21/- pencil tinted
ALKEN .....	46	Three—Sporting Scenes 10/-
UNKNOWN .....	47	A Portrait of a Lady 10/-
J. S. YAMIMOTO .....	48	A Game of Draughts 10/-
UNKNOWN .....	49	Nine—Queen Victoria at the Opera, 35/- and eight others
UNKNOWN .....	50	Two—H.M. Sloop Speedy at Gibraltar, 1/- and a Portrait of a Lady
H. POPE .....	51	Kenilworth Castle 32/-
KNOX .....	52	A Winter Scene 10/-

## PICTURES, Etc.

FRENCH SCHOOL .....	53	The Birth of Venus 42/-
SPANISH SCHOOL .....	54	A Portrait Group 25/-
DUTCH SCHOOL .....	55	A Landscape and cattle, panel 22/-
F. W. WATTS .....	56	A Cottage and figures in a landscape 10/-
A. SHEERBOOM .....	57	A Canal Scene 100/-
DUTCH SCHOOL .....	58	A Landscape and castle 20/-
G. CHAMBERS .....	59	A Harbour Scene 40/-
C. TOWNE .....	60	Horse and Groom, huntsmen in dis- 25/- tance
UNKNOWN .....	61	Head of a Saint 21/-
UNKNOWN .....	62	A Figure Subject 21/-
DE HAAS .....	63	A Dutch Landscape and cattle 70/-
WEISS .....	64	A Landscape 20/-
BUNDY .....	65	An Interior with figures 10/-
ITALIAN SCHOOL .....	66	The Madonna and Child 30/-
DIRK HALS .....	67	Head of a Man, copper 30/-
DUTCH SCHOOL .....	68	The Dentist 10/-
O. CONNOR .....	69	A River View, panel 60/-
SIENNESE SCHOOL .....	70	The Lord's Supper, panel 55/-
RUYSDAEL .....	71	A Rocky Landscape, panel 11/-
PANNINI .....	72	Ruins and figures 4/-
SINTZENICH .....	73	The Highlander's Departure 21/-
DUTCH SCHOOL .....	74	Two—A Portrait of a Man, and a 5/- Jester
ENGLISH SCHOOL .....	75	Mary Queen of Scots 32/-



<i>By or attributed to</i>	<i>LOT</i>	<i>Subject</i>
ENGLISH SCHOOL .....	76	A Portrait of a Lady in blue dress and brown cloak 12/-
HUGGINS .....	77	A Ship on Fire in a Dockyard 10/6
ENGLISH SCHOOL .....	78	Two—Portraits of Ladies 12/-
JAN VAN BASSEN .....	79	Interior of a Cathedral with numerous figures 80/-
RAEBURN .....	80	A Portrait of a Lady seated 18/-
R. WILSON .....	81	A Classical Landscape and figures 7/-
POOLE .....	82	A Study of a Girl 19/6
CROME, etc. ....	83	Two—A Moonlight Scene, and a Landscape and figures, panels 20/-
SHELDON WILLIAMS .....	84	A Hunting Morn 24/6
G. DE BREANSKI .....	85	Three—A pair, Lake Scenes, and a Marine View 7/-
A. DE BREANSKI .....	86	Three Landscapes 8/-
DUTCH SCHOOL .....	88	Two—A Portrait, and Still Life 18/-
UNKNOWN .....	89	A Revolution 50/-
UNKNOWN .....	90	A Hunting Scene
A. CUYP .....	91	Figures and Horses in a Landscape, panel
UNKNOWN .....	92	Two Figure Subjects
A. FRASER .....	93	A Cottage Interior
UNKNOWN .....	94	The Adoration
UNKNOWN .....	95	Two—A Watermill and a Figure Subject
J. WEBB .....	96	A Coast Scene, panel
G. ROWLANDSON .....	97	"Full Cry"
DUTCH SCHOOL .....	98	A Landscape and figures, panel
G. HENDRY .....	99	Love at First Sight
LEEMPUTTEN .....	99A	Two—Poultry, panels
STANLEY WILSON .....	99B	Head of a Lion
RATHBONE .....	99C	A pair—Landscapes

*Lots 100 to 109 are the Property of a Gentleman.*

E. G. FULLER .....	100	Broken Water, St. Ives
R. CHALMERS .....	101	Fishing Boats off the Coast
J. W. OAKES, R.A. ....	102	At Betchworth
DUTCH SCHOOL .....	103	An Interior with figures, panel
UNKNOWN .....	104	A Mediterranean Port Scene with boats and figures

<i>By or attributed to</i>	<i>LOT</i>	<i>Subject</i>	
P. VANNUCI .....	105	The Miraculous Draught of Fishes	25/
R. K. GREVILLE, H.R.S.A. ....	106	An English Lake Scene, <i>signed and dated 1847</i>	63/
UNKNOWN .....	107	Two—A Coast Scene, boats and figures, sunset, and one other	20/
PETHER, etc. ....	108	Two—A River Scene, moonlight, and a Peasant Boy, Horse and Dog	40/
UNKNOWN .....	109	A Farm Scene	25/

*Other Property.*

BAXTER .....	110	The Gleaners	30/
EARLY FLEMISH .....	111	The Offerings of the Wise Men, <i>panel</i>	60/
DUTCH SCHOOL .....	112	Vessels off the Coast	35/
A. OODCHOUX .....	113	A Swiss Landscape, <i>signed and dated 1877</i>	45/
DUTCH SCHOOL .....	114	A Family Group	16/
COROT .....	115	A Woodland Scene	35/
UNKNOWN .....	116	A Figure Subject	24/6
J. W. COLE .....	117	Huntsman and Hounds	12/
REINAGLE .....	118	The Kill	10/
J. WARING .....	119	A View near Lucerne	20/
VAN DER NEER .....	120	A River Scene, Moonlight, <i>panel</i>	21/
DUTCH SCHOOL .....	121	The Tric-Trac Players	60/
ENGLISH SCHOOL .....	122	Huntsman and Hounds	15/
DE HEEM .....	123	Still Life—Fish, etc., <i>panel</i>	11/-
DUTCH SCHOOL .....	124	An Interior with figures	20/
UNKNOWN .....	125	Two—An Incident in the Boxer Rebellion, and Elias and the Raven	5/
UNKNOWN .....	126	Three—A Grecian Abbe and two others	5/
GARNIER, etc. ....	127	Two Figure Subjects	16/-
A. MORRIS, etc. ....	128	Three—Sheep in a Wintry Landscape, and two others	12/
DUTCH SCHOOL .....	128A	A Landscape with stream, animals, etc.	24/6
UNKNOWN .....	128B	The Druggist's Shop <i>at W S</i>	80/
DUTCH SCHOOL .....	128C	A Harbour Scene with shipping, <i>panel</i>	80/
ITALIAN SCHOOL .....	128D	A Ruined Temple	50/-
DUTCH SCHOOL .....	128E	An Interior with figures	42/



<i>By or attributed to</i>	LOT	<i>Subject</i>	
UNKNOWN .....	129	A pair—Portraits of a Lady and Gentleman, <i>on glass</i>	20/-
UNKNOWN .....	130	The Crown of Thorns	2/-
UNKNOWN .....	131	Two—Children at a Well, and a Portrait of an Officer	1/-
SPANISH SCHOOL .....	<del>132</del>	The Dead Christ and the Virgin Mary	
UNKNOWN .....	133	Two—Balshazzar's Feast, and one other	5/-
BROUWER .....	134	Boers Quarrelling	9/-
CONSTABLE .....	135	A View on Hampstead Heath	16/-
UNKNOWN .....	136	A Coast Scene, Sunset	20/-
COX .....	137	A View in Wales	24/-
UNKNOWN .....	138	Three Landscapes	22/-
OSTADE .....	139	An Interior with figures, <i>panel</i>	80/-
J. W. WILSON .....	140	The Uninvited Confidant, <i>panel</i>	25/-
A. PREDA .....	141	An Italian Lake Scene	10/-
FRENCH SCHOOL .....	142	A Portrait of a Lady standing in a landscape	1/-
UNKNOWN .....	143	Two Landscapes	32/-
HERRING, etc., .....	145	Three—A Horse in a Landscape, and a pair, miniature Landscapes and figures	14/-
POTTER .....	146	Cattle, <i>panel</i>	6/-
DUTCH SCHOOL .....	147	A Harbour Scene with shipping	90/-
FLEMISH SCHOOL .....	148	An Allegorical Figure Subject	16/-
SHAYER .....	149	Figures and Cattle outside a Barn	32/-
DUTCH SCHOOL .....	150	Boers Merrymaking outside an Inn	51/-
UNKNOWN .....	151	The Resurrection of Our Lord	20/-
UNKNOWN .....	152	A Rocky Landscape with waterfall and figures	
UNKNOWN .....	153	Two Figure Subjects	60/-
UNKNOWN .....	154	Lady Hamilton	10/-
ENGLISH SCHOOL .....	155	A pair—Oxen	10/-
UNKNOWN .....	156	Dead Game	5/-
DUTCH SCHOOL .....	<del>157</del>	A Woodland Scene with stream and figure fishing	
RUYSDAEL .....	158	A Landscape with cottage and figures, <i>panel</i>	26/-
REMBRANDT ( <i>School of</i> ) .....	159	Head of a Woman, <i>panel</i>	5/-
VAN STRY .....	160	A River Scene, cattle and figures	14/-
A. VICKERS .....	161	St. Catherine's Chapel, Guildford	21/-



<i>By or attributed to</i>	LOT	<i>Subject</i>
A. MORRIS .....	162	A pair— Sheep and Cattle 65/-
SHAYER .....	163	A pair—Farm Scenes with figures 84/-
HERRING .....	164	A Farm Scene, <i>panel</i> 84/-
UNKNOWN .....	165	A Continental Port Scene, Sunset, <i>signed</i> 30/-
GOODALL .....	166	Head of an Arab 45/-
UNKNOWN .....	167	The Ducal Palace, Venice, <i>panel</i> 55/-
C. RAPETTI .....	168	A Venetian Scene 95/-
WITHERINGTON .....	169	The Intruder, <i>panel</i> 60/-
HERRING .....	170	Horses' Heads 25/-
COOPER .....	171	Sheep in a Landscape 45/-
UNKNOWN .....	172	Terriers Ratting 55/-
BODDINGTON .....	173	A River Scene with eel traps 50/-
DUTCH SCHOOL .....	174	A Coast Scene with boats and figures 60/-
WESTALL .....	175	The Strawberry Girl 84/-
ENGLISH SCHOOL .....	176	A Portrait of an Officer, <i>pastel</i> 22/-
UNKNOWN .....	177	An Interior of a Church with figures 26/-
DUTCH SCHOOL .....	178	Fruit on a Table 45/-
ITALIAN SCHOOL .....	179	Two Religious Subjects 10/-
DUTCH SCHOOL .....	180	Vessels in the Scheldt, <i>panel</i> 45/-
P. BUSSEY .....	181	The Seizure of the Earl of March 22/-
LUDOVICI .....	182	St. Valerie sur Somme, <i>panel</i> 16/-
DUTCH SCHOOL .....	183	A Figure Subject, <i>panel</i> 22/-
UNKNOWN .....	184	The Scourging of Christ 55/-
UNKNOWN .....	185	Four—Portraits of Scott, Burns, and two others 5/-
J. HORNUNG .....	186	Le Tourneur de Village, <i>panel</i> 5/-
A. E. PROCTOR, etc. ....	187	Two—A Landscape and one other 5/-
UNKNOWN .....	188	Seven—A set of six, The Franklin Expedition, <i>water colours</i> , and an engraving of the Officers 90/-
UNKNOWN .....	189	Three—The Voyage of H.M.S. Discovery (two), and a photograph of the Officers 10/-

<i>By or attributed to</i>	<i>LOT</i>	<i>Subject</i>
ENGLISH SCHOOL .....	190	A pair—Portraits of a Lady and Gentleman
UNKNOWN .....	191	A Lake Scene with ruined castle
F. OLIVA .....	192	A pair—Ideal Female Figures
HOBBEEMA .....	193	A Landscape with mill and figures
A. BARLAND .....	194	A pair—Landscapes
UNKNOWN .....	195	Two—Landscapes and cattle
UNKNOWN .....	196	Two—A Portrait of Mary Queen of Scots, <i>panel</i> , and a Portrait of a Gentleman, <i>water colours</i>
UNKNOWN .....	197	Five Figure Subjects, etc.
UNKNOWN .....	198	A Landscape
UNKNOWN .....	199	The Dentist
UNKNOWN .....	200	Three—Peasants and Goats, and two Portraits
UNKNOWN .....	201	Four Landscapes
UNKNOWN .....	202	Two—A Marine View, and a Landscape, <i>panels</i>
UNKNOWN .....	203	Two—Fish, <i>panel</i> , and The Dog Kennel
UNKNOWN .....	204	Two—Vessels in Harbour, and a Landscape with ruins and figures
J. MATHEWS .....	205	A Portrait of a Horse
UNKNOWN .....	206	Two—A Landscape with stream and figures fishing, and one other
ENGLISH SCHOOL .....	207	A Portrait of Sir William Macdonald, Physician appointed to Queen Victoria, 1846
CONSTABLE .....	208	A Landscape with figures and sheep
LAURENCE .....	209	A Portrait of a Boy in a Landscape
UNKNOWN .....	210	A Landscape
FLEMISH SCHOOL .....	211	A Group of Men in Armour and Cardinals round a Dying Youth
ITALIAN SCHOOL .....	212	The Madonna and Child, <i>panel</i>
UNKNOWN .....	213	Three—Two Landscapes and a Saint

6/12/93

9.

90/

10.

18/

20/ 40/ 25/

35/

26/

24/

24/

at W.S.

20/

5/

11/

12/

19/

13/

at W.S.

40/

22/6

10 1/2 50

12/

18/



<i>By or attributed to</i>	<i>2</i>	<i>LOT</i>	<i>Subject</i>
E. C. BARNES .....	214	A pair—Figure Subjects	34/-
KNELLER .....	215	A Portrait of a Lady in a blue dress	46/-
UNKNOWN .....	216	Two Portraits	10/6
UNKNOWN .....	217	Interior with men in armour	40/-
UNKNOWN .....	218	A Mythological Subject	30/-
FRENCH SCHOOL.....	219	A Landscape with seated figure	50/-
ITALIAN SCHOOL.....	220	The Holy Family, panel	44/6
STUART .....	221	A Portrait of an Officer	30/-
LAWRENCE ( <i>School of</i> ) ....	222	A Portrait of a Young Man	14/-
DUTCH SCHOOL .....	223	A Burgomaster's Wife	65/-
10. DUTCH SCHOOL .....	224	A Chemist in his Laboratory	at 11 Sh
ENGLISH SCHOOL .....	225	A Portrait of a Lady	

FINIS



*[Faint, illegible handwritten text, likely bleed-through from the reverse side of the page. The text is scattered across the page with some faint lines and markings.]*